

# V&V Reference Report

## L2 ASCDS Version : 7.6.7.1

Observation 6386 - L2 Version 002  
Chandra X-Ray Center

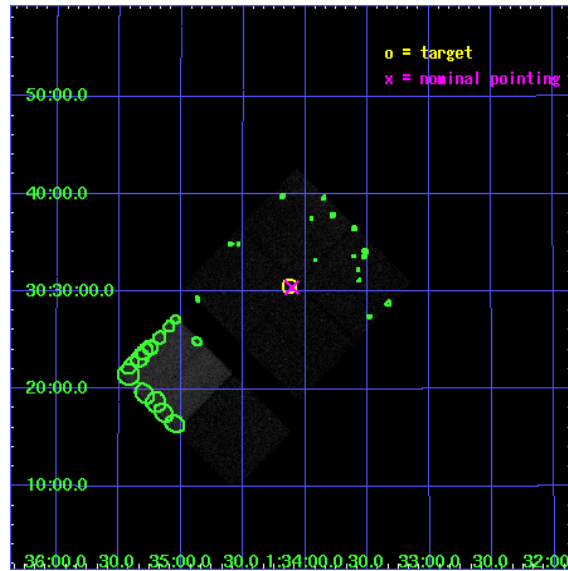
L2 Processing Date : Apr 4 2006

## Contents

<b>1</b>	<b>Front</b>	<b>2</b>
<b>2</b>	<b>OBI</b>	<b>3</b>
2.1	OBI . . . . .	3
2.1.1	Images . . . . .	3
2.1.2	Bias . . . . .	3
2.1.3	Parameters . . . . .	4
2.1.4	Events . . . . .	4
2.2	Compared Parameters . . . . .	5
2.3	Aspect . . . . .	6
2.4	Star Slots . . . . .	9
2.4.1	Slot 3 . . . . .	9
2.4.2	Slot 4 . . . . .	10
2.4.3	Slot 5 . . . . .	11
2.4.4	Slot 6 . . . . .	12
2.4.5	Slot 7 . . . . .	13
2.5	FID Slots . . . . .	14
2.5.1	Slot 0 . . . . .	14
2.5.2	Slot 1 . . . . .	15
2.5.3	Slot 2 . . . . .	16
<b>3</b>	<b>Point Sources</b>	<b>17</b>
<b>A</b>	<b>Summary</b>	<b>18</b>
A.1	Status . . . . .	18
A.2	Comments . . . . .	18

# 1 Front

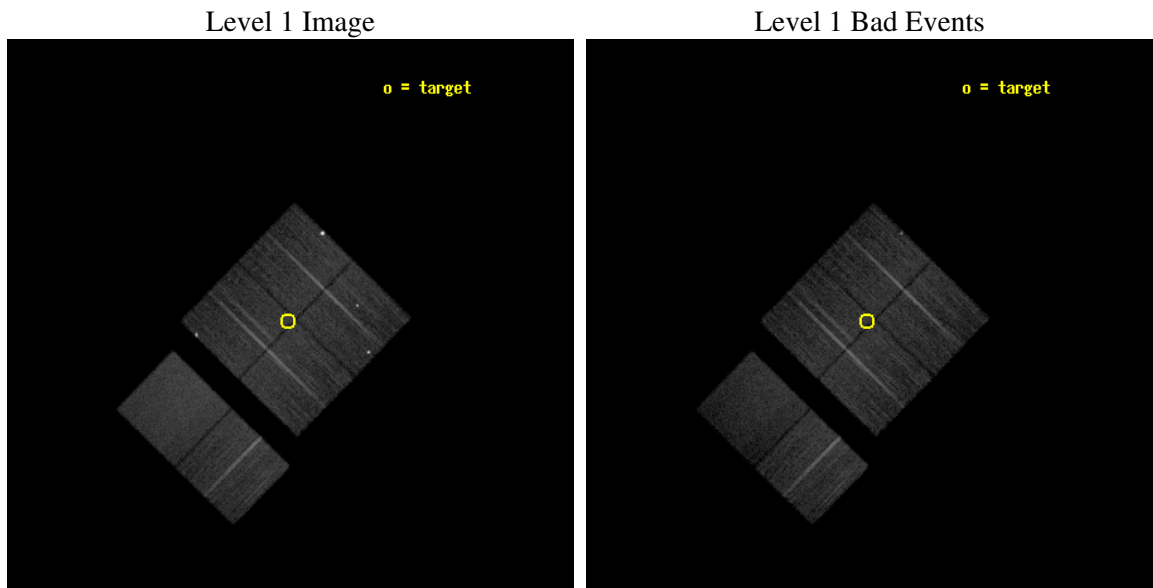
seq_num	600488
obs_id	6386
title	The Chandra ACIS Survey of M33 (ChASeM33): A Deep Survey of the Nearest Face-on Spiral Galaxy
observer	Dr Manami Sasaki
object	M33 Field 6
dtcycle	0
cycle	P
ra_targ	23.532083
dec_targ	30.509111
ra_nom	23.527037595323
dec_nom	30.507414850581
roll_nom	224.21124095413
revision	2
ontime	15049.599943936
livetime	14859.032847665
ontime0	15046.358953625
ontime1	15049.599943936
ontime2	15046.358953655
ontime3	15049.599943936
ontime6	15049.599943936
ontime7	15049.599943936
l2events	101212



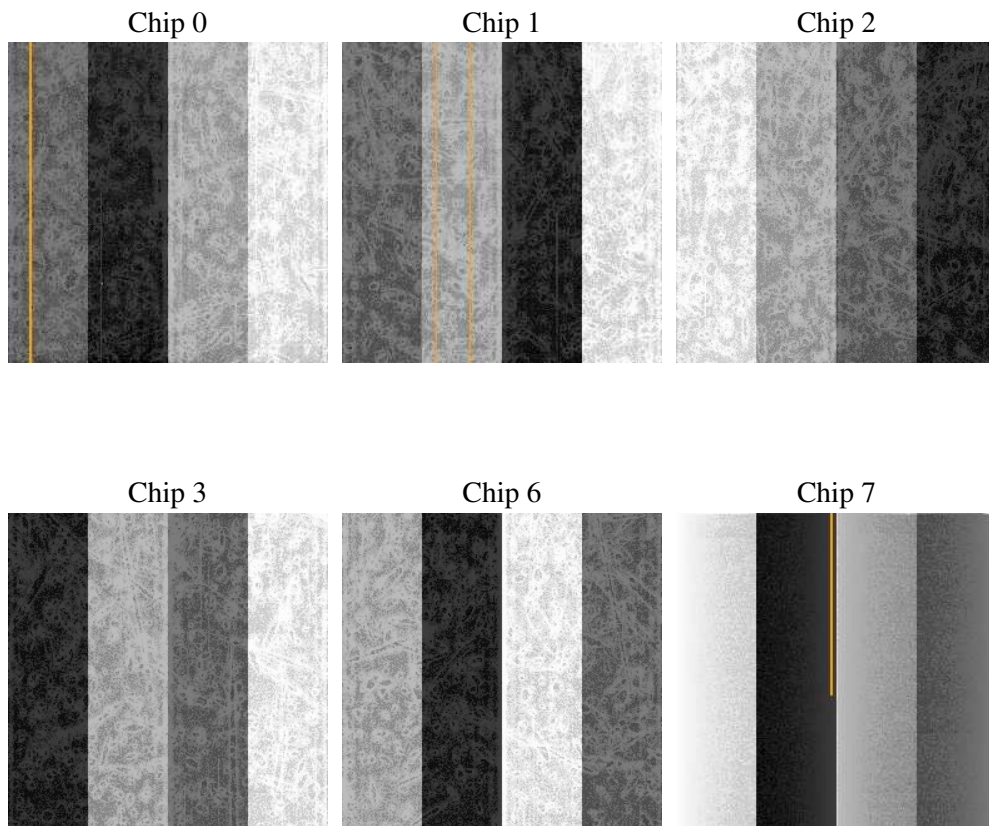
## 2 OBI

### 2.1 OBI

#### 2.1.1 Images



#### 2.1.2 Bias



### 2.1.3 Parameters

obi_num	0
ascdsver	7.6.7.1
caldsver	3.2.1
date	2006-04-04T12:21:24
revision	2

sched_exp_time	15000.000000
ontime	15054.499754399
ontime0	15051.258754194
ontime1	15054.499744505
ontime2	15051.258764118
ontime3	15054.499754399
ontime6	15054.499754399
ontime7	15054.499754399
l1events	605027

### 2.1.4 Events

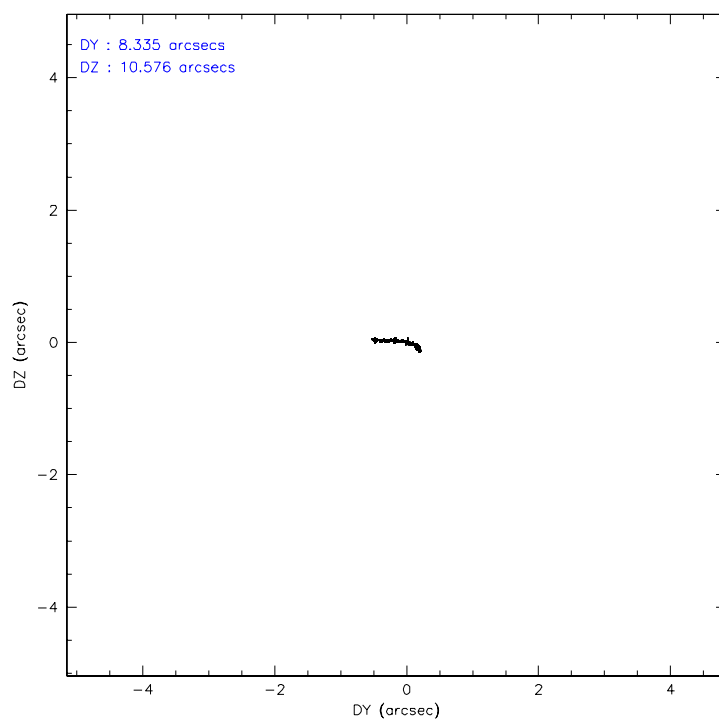
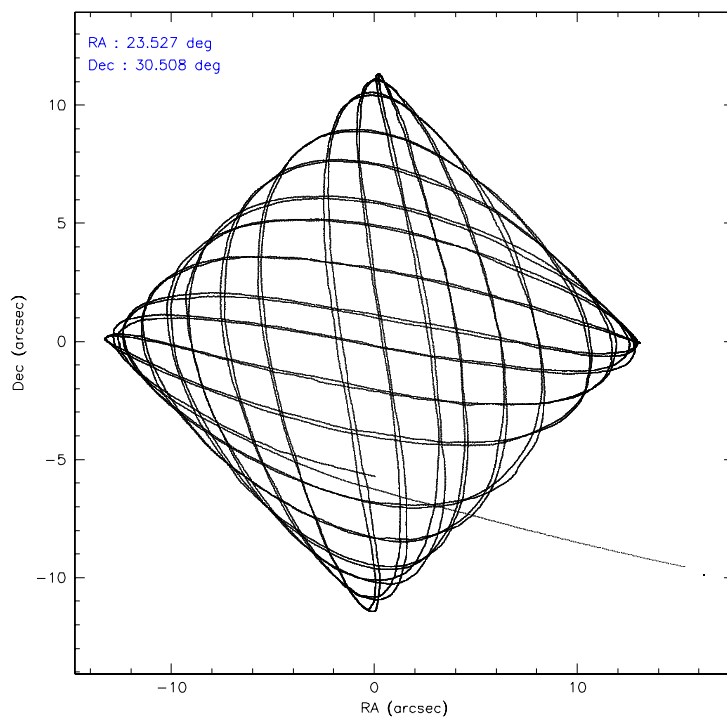
	ccd 0	ccd 1	ccd 2	ccd 3	ccd 6	ccd 7
level 1 events	95864	106157	101935	95165	98466	107440
rejected events	81487	81104	92773	83909	88657	63458
rejected %	85%	76%	91%	88%	90%	59%

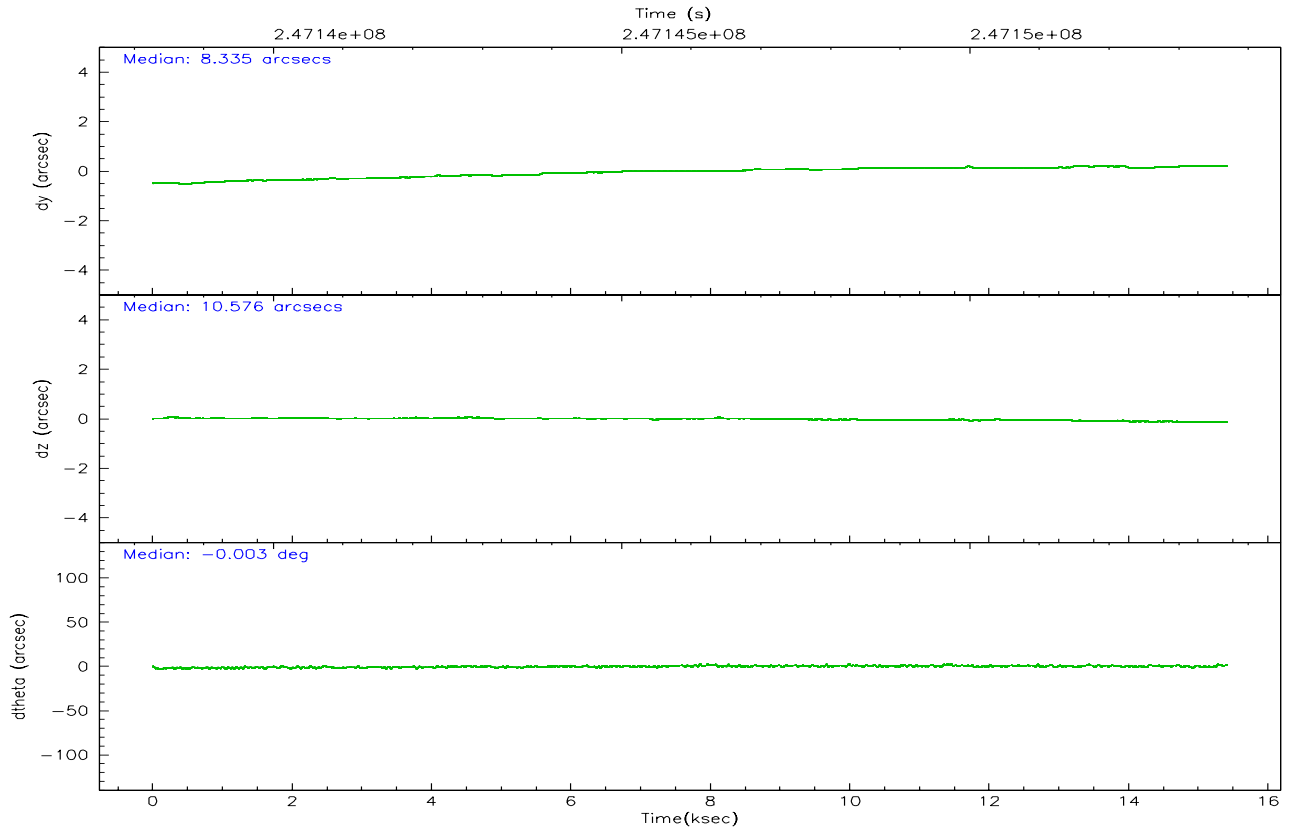
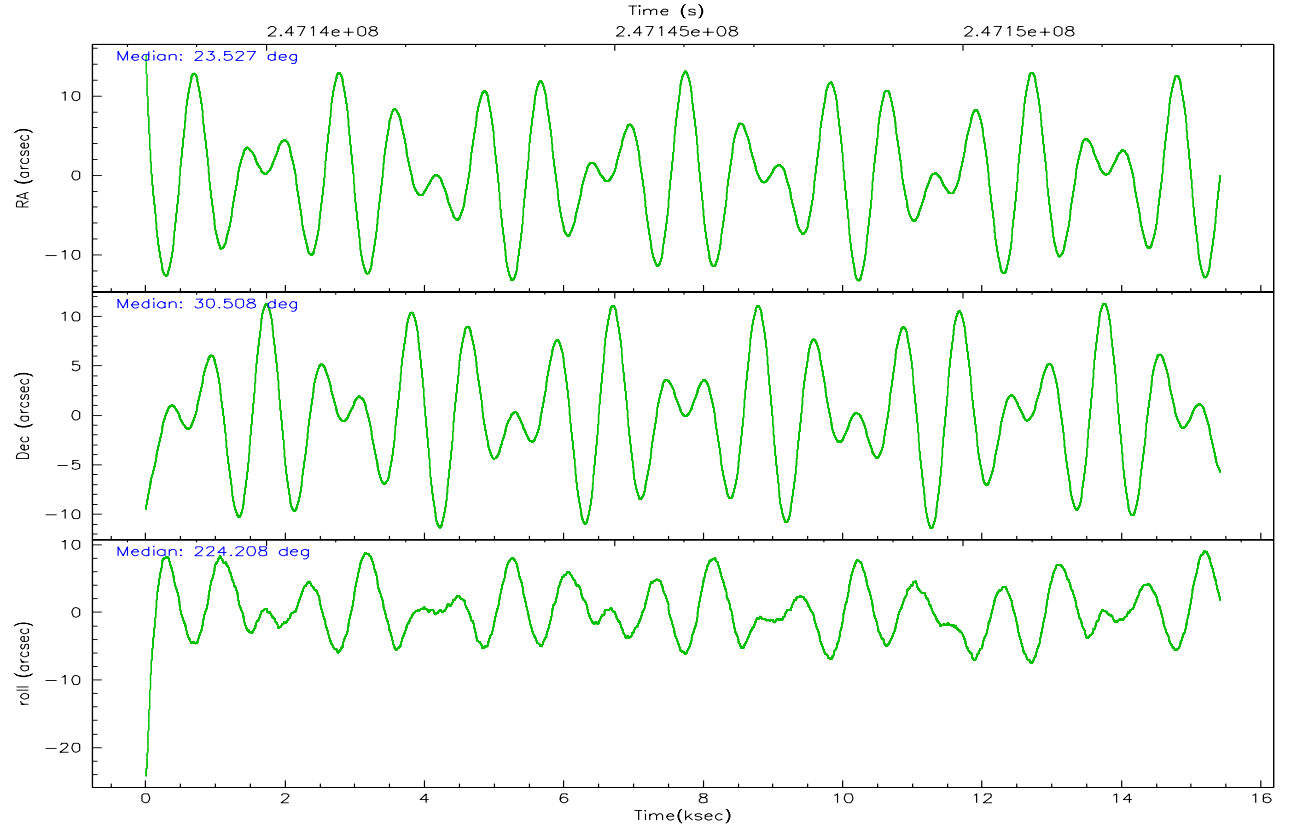
	ccd 0	ccd 1	ccd 2	ccd 3	ccd 6	ccd 7
grade 0 events	7296	15120	3289	4975	3332	2222
	7%	14%	3%	5%	3%	2%
grade 1 events	72	253	63	77	49	57
	0%	0%	0%	0%	0%	0%
grade 2 events	2640	4003	2223	2164	2198	10827
	2%	3%	2%	2%	2%	10%
grade 3 events	1271	1695	948	1089	1032	2337
	1%	1%	0%	1%	1%	2%
grade 4 events	1191	1611	1051	1173	1084	2300
	1%	1%	1%	1%	1%	2%
grade 5 events	3390	3793	3129	3910	4006	8092
	3%	3%	3%	4%	4%	7%
grade 6 events	1983	2634	1652	1858	2166	26304
	2%	2%	1%	1%	2%	24%
grade 7 events	78021	77048	89580	79919	84599	55301
	81%	72%	87%	83%	85%	51%

## 2.2 Compared Parameters

Parameter	Planned	Actual	Parameter	Planned	Actual
Instrument	ACIS	ACIS	Obspar format version number	6	6
Detector	ACIS-012367	ACIS-012367	Obspar file type	PREDICTED	ACTUAL
Grating	NONE	NONE	Obspar update status	NONE	UPDATED
Data mode	VFAINT	VFAINT	On-chip summing requested	N	N
Observation mode	POINTING	POINTING	Subarray requested	NONE	NONE
Pointing RA	23.535589	23.52703759532289	Alternating exposures requested	N	N
Pointing Dec	30.533805	30.50741485058071	Primary exposure time	0.000000	3.2
Pointing Roll	223.998215	224.2112409541294			
SIM focus pos (mm)	-0.782348	-0.7809083437167272			
SIM defocus (mm)	0	0.001439871863259334			
SIM translation stage pos (mm)	-233.592463	-233.5874344608287			
SIM translation stage offset (mm)	0	-0.005018542100998502			
Observation start time	247138690.184000	247137513.23241			
Observation start date	2005-10-31T09:37:06	2005-10-31T09:18:33			
Observation end time	247153690.184000	247154394.47069			
Observation end date	2005-10-31T13:47:06	2005-10-31T13:59:54			
Read mode	TIMED	TIMED			

## 2.3 Aspect





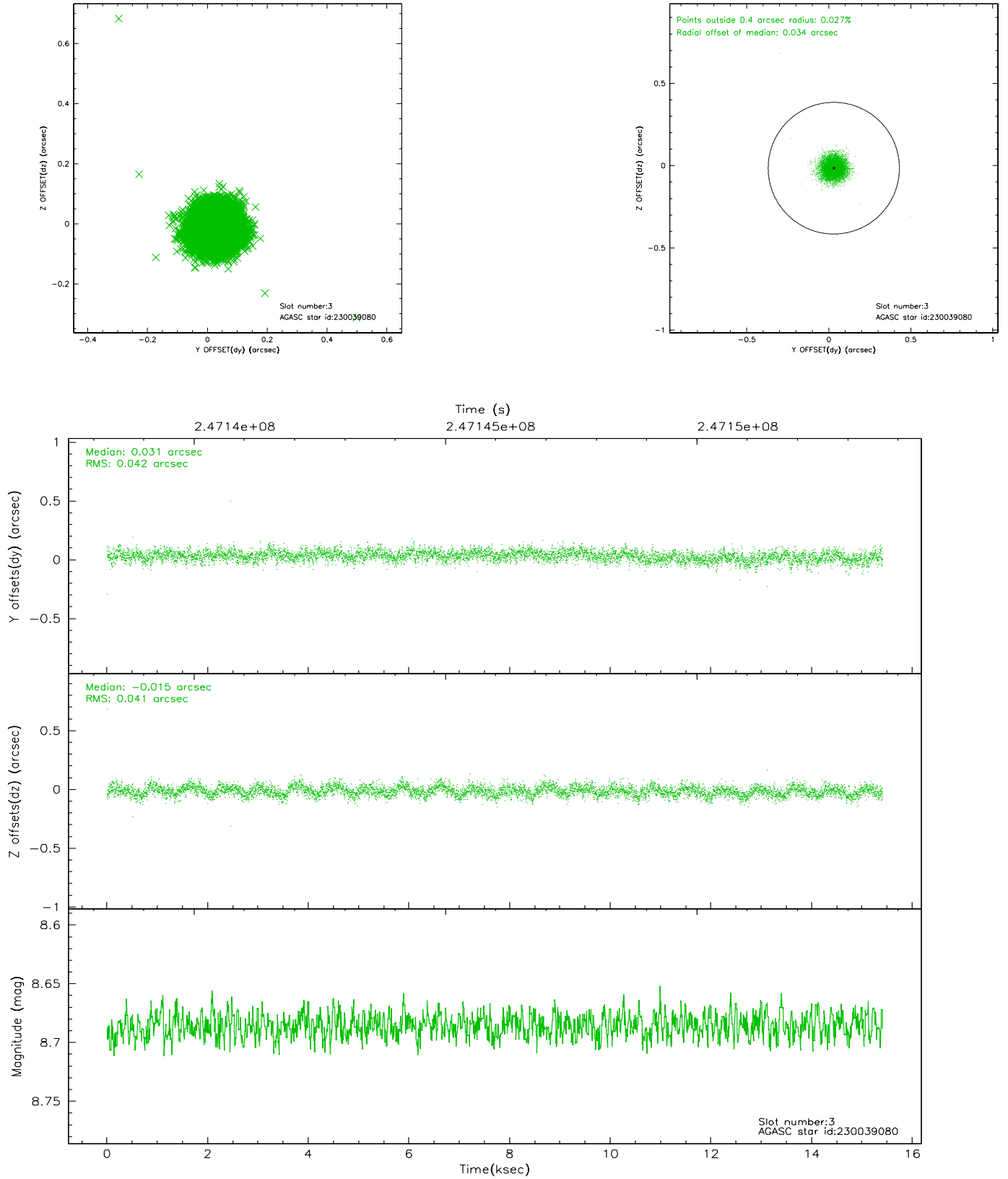
### Slot Statistics

slot	status	id	mag	n_pts	med_dy	med_dz	dr1	dr2	ra	dec	mean_y	mean_z
0	FID	ACIS-I-1	7.24	3759	-0.009	0.036	0.012	0.018	0.000000	0.000000	931.37	-833.99
1	FID	ACIS-I-2	7.14	3758	-0.078	-0.028	0.011	0.019	0.000000	0.000000	-762.62	-840.68
2	FID	ACIS-I-6	7.25	3759	-0.005	0.060	0.012	0.022	0.000000	0.000000	396.83	1707.69
3	GUIDE	230039080	8.69	7519	0.031	-0.015	0.061	0.098	23.320866	29.887774	2097.33	1207.57
4	GUIDE	300553080	9.07	7515	0.005	0.199	0.079	0.128	23.777101	30.773227	-1136.24	-101.04
5	GUIDE	300559160	9.40	7497	0.030	-0.083	0.092	0.151	24.161026	30.632205	-1643.53	1087.29
6	GUIDE	300559832	7.87	7517	-0.011	-0.115	0.056	0.091	24.407732	30.552794	-1999.98	1821.78
7	GUIDE	300559960	7.88	7518	-0.055	0.019	0.061	0.097	22.944463	30.624765	1086.26	-1509.95

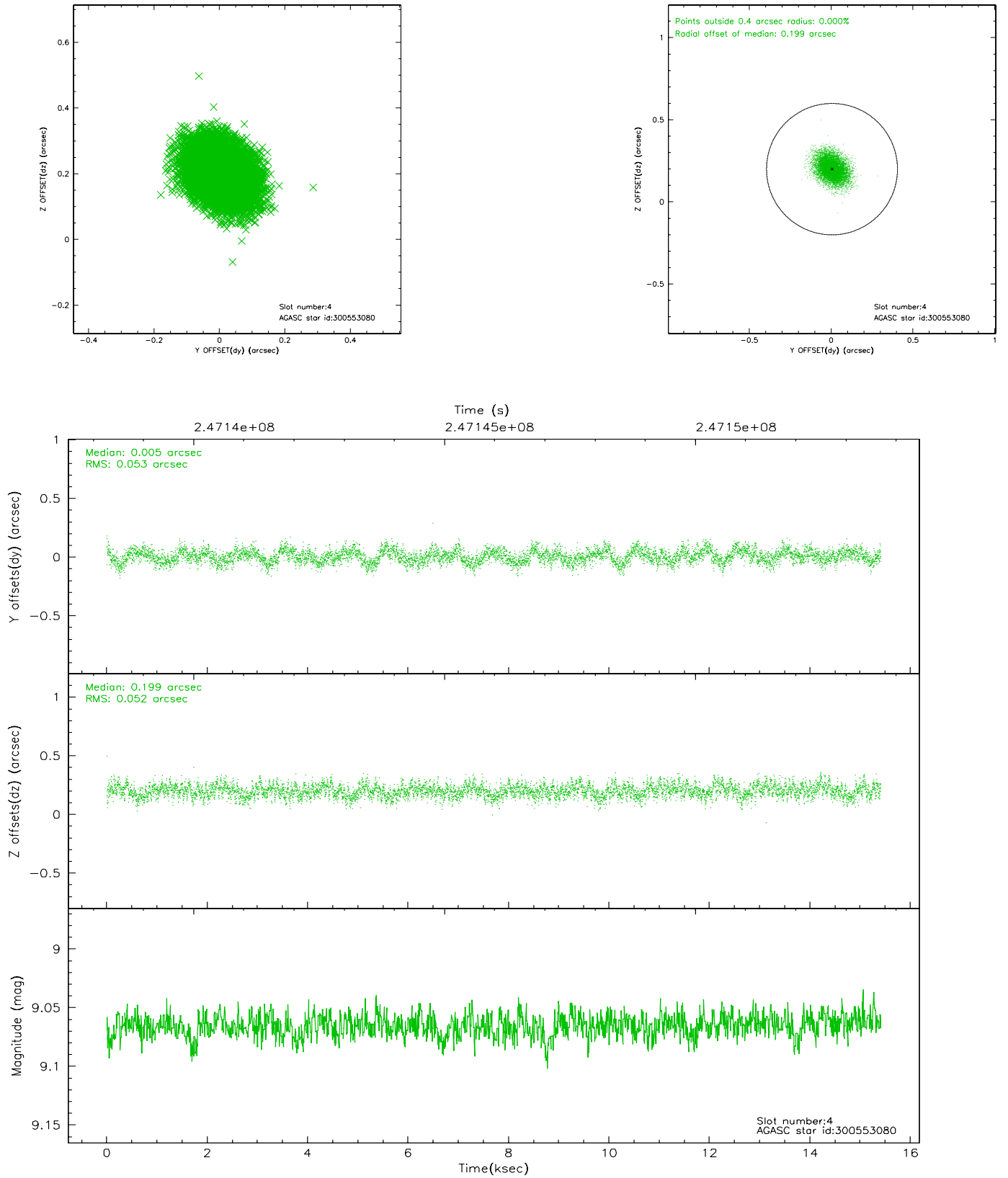


## 2.4 Star Slots

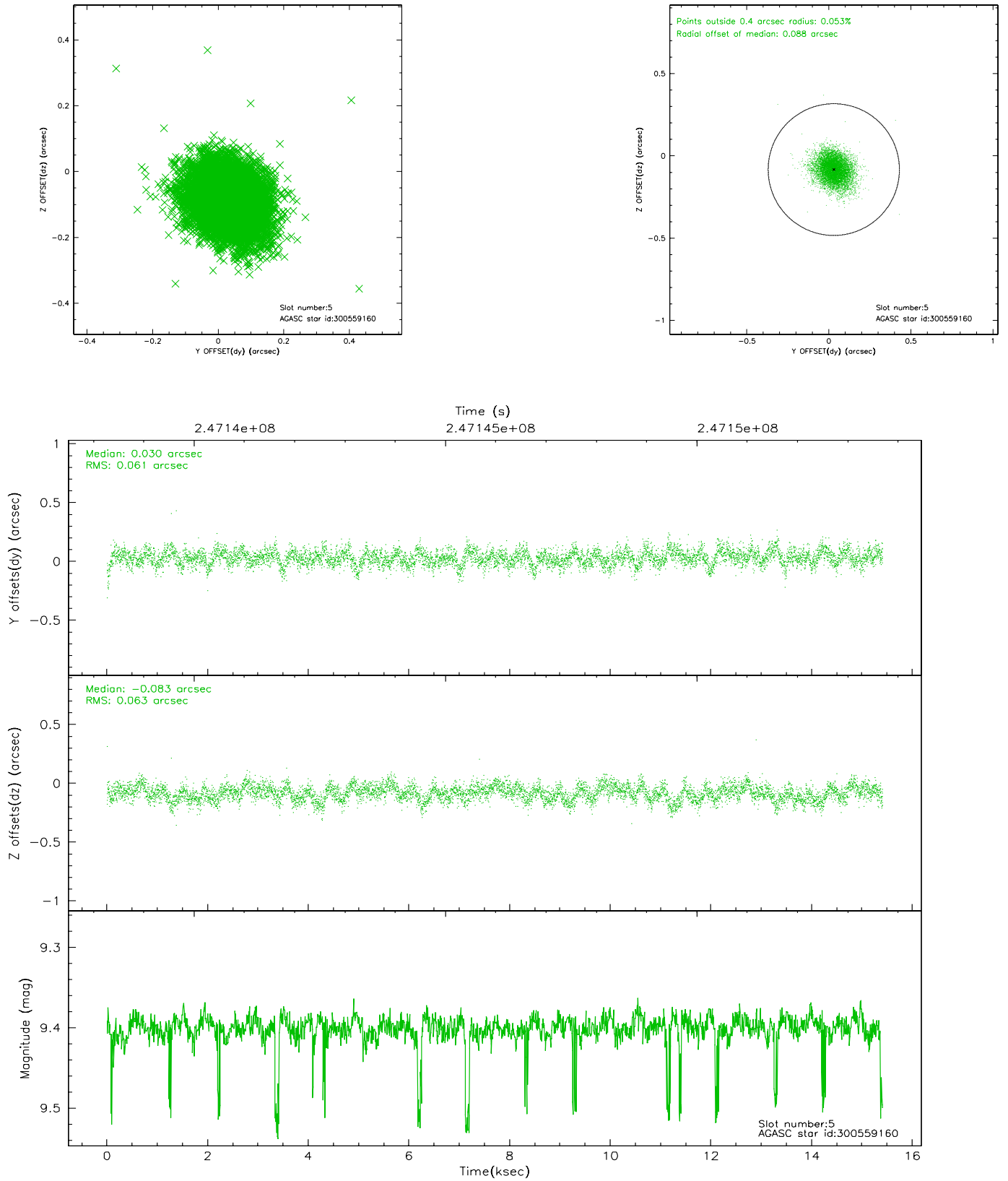
### 2.4.1 Slot 3



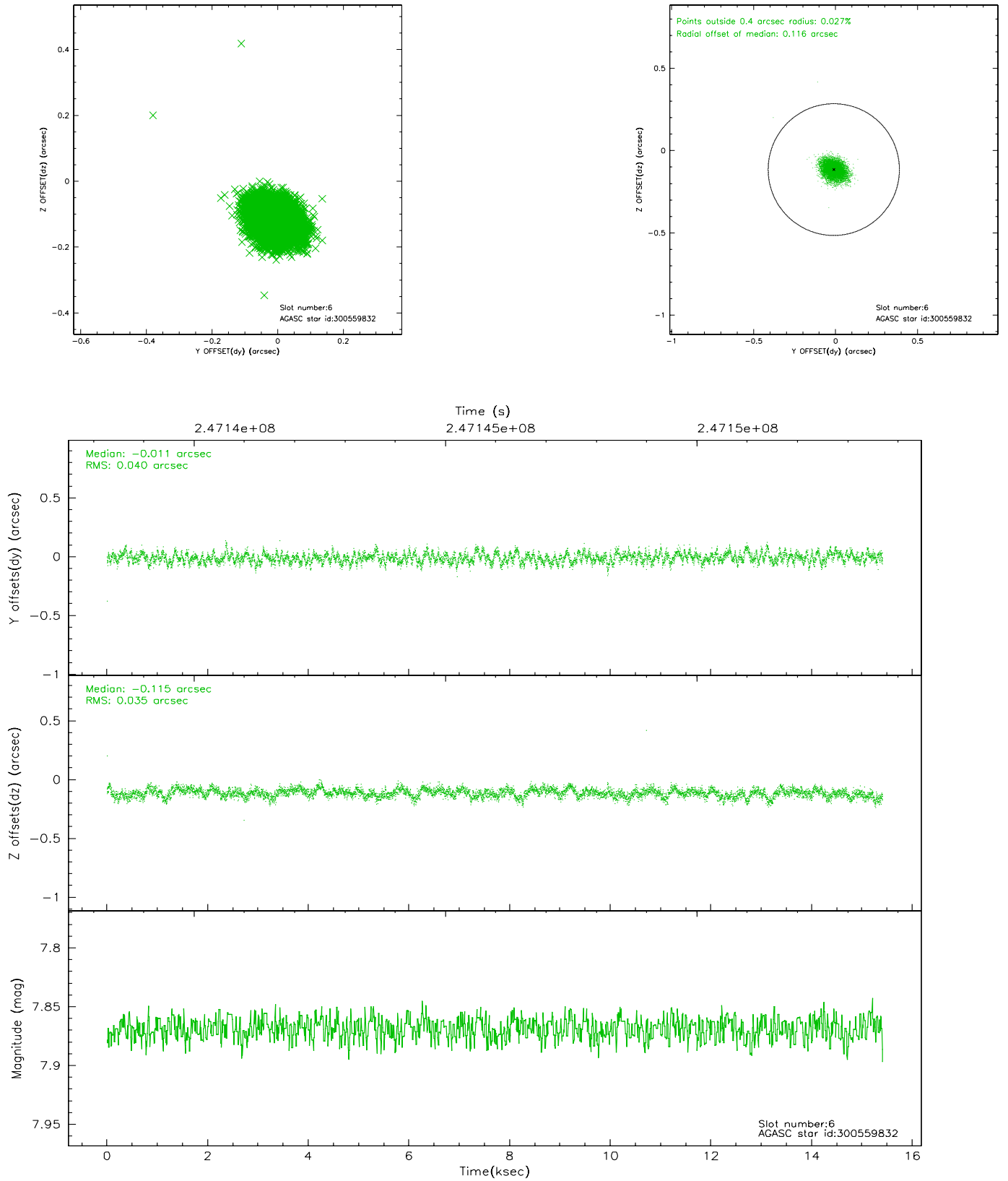
## 2.4.2 Slot 4



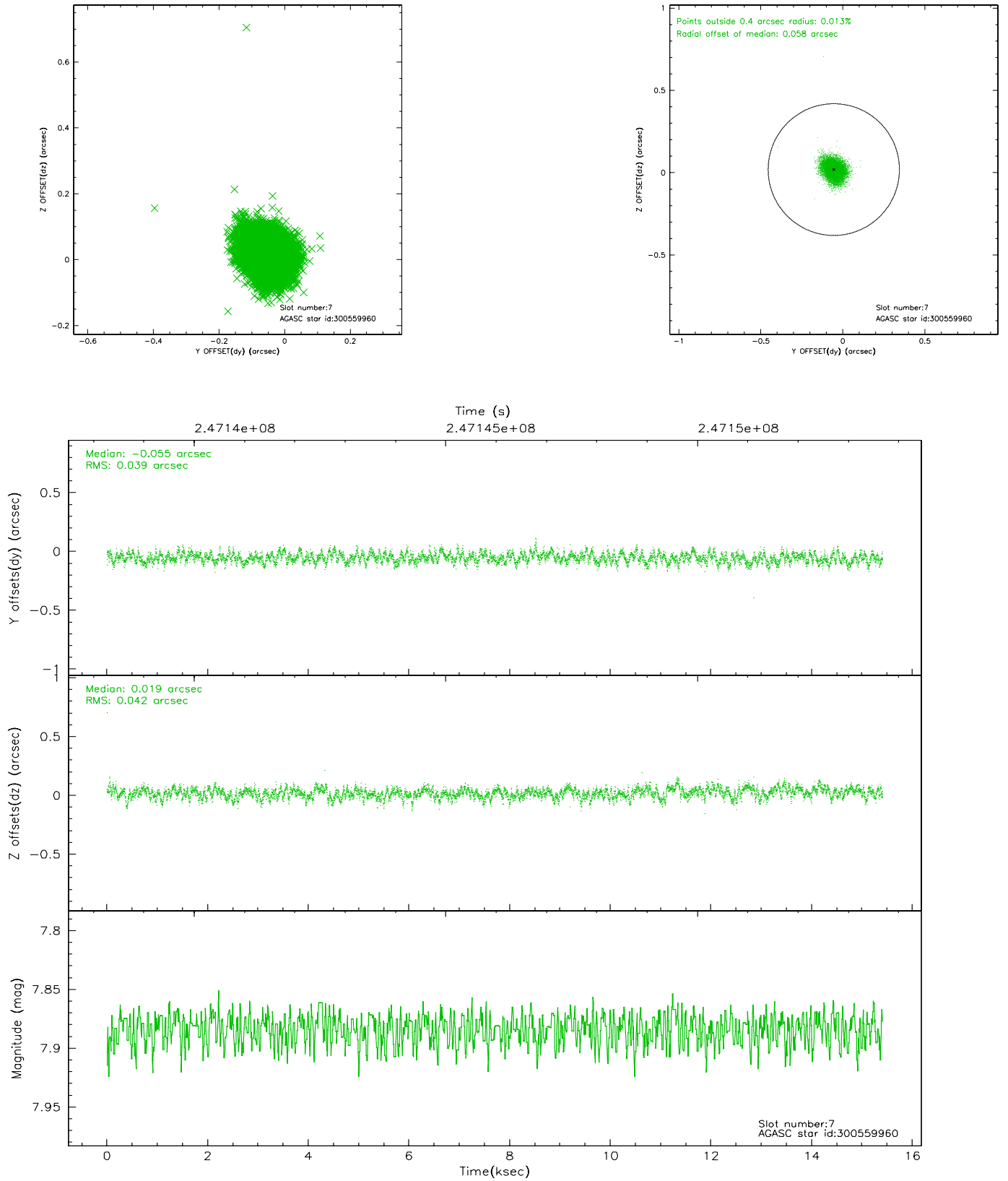
### 2.4.3 Slot 5



## 2.4.4 Slot 6

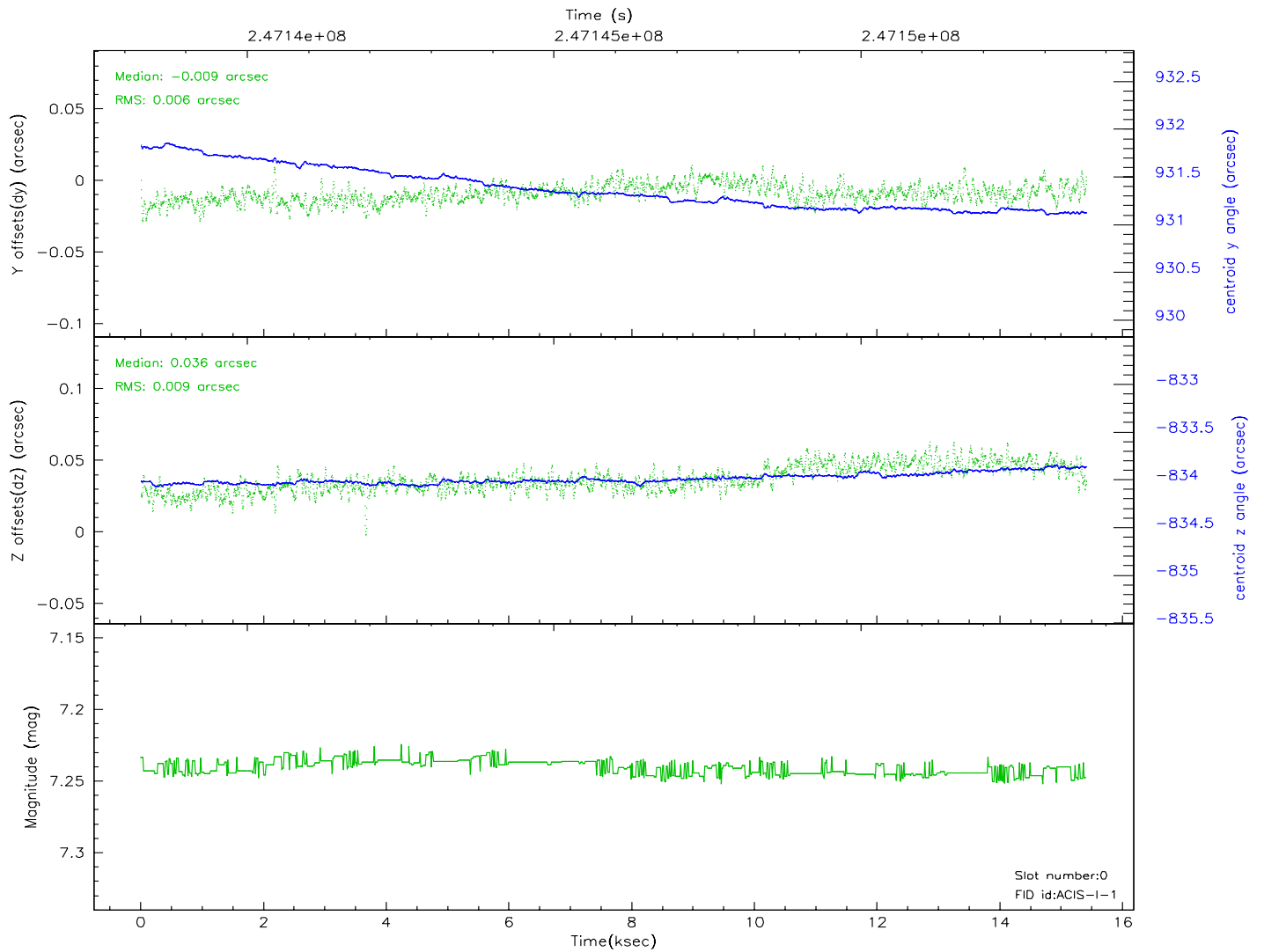
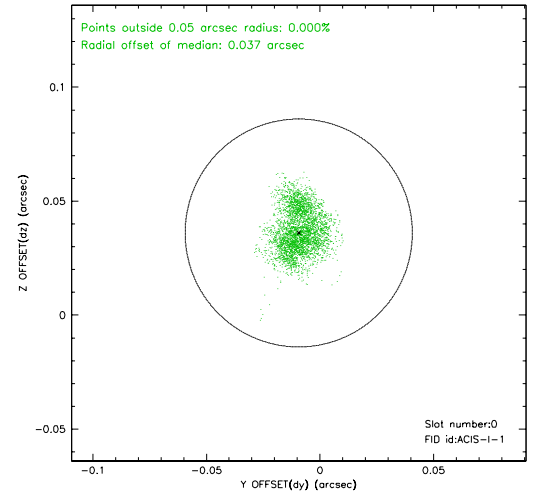
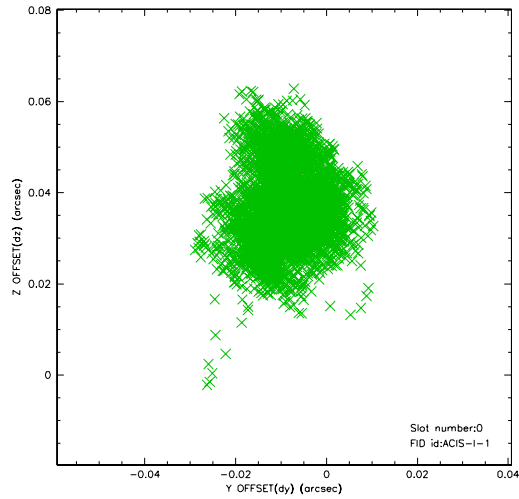


## 2.4.5 Slot 7

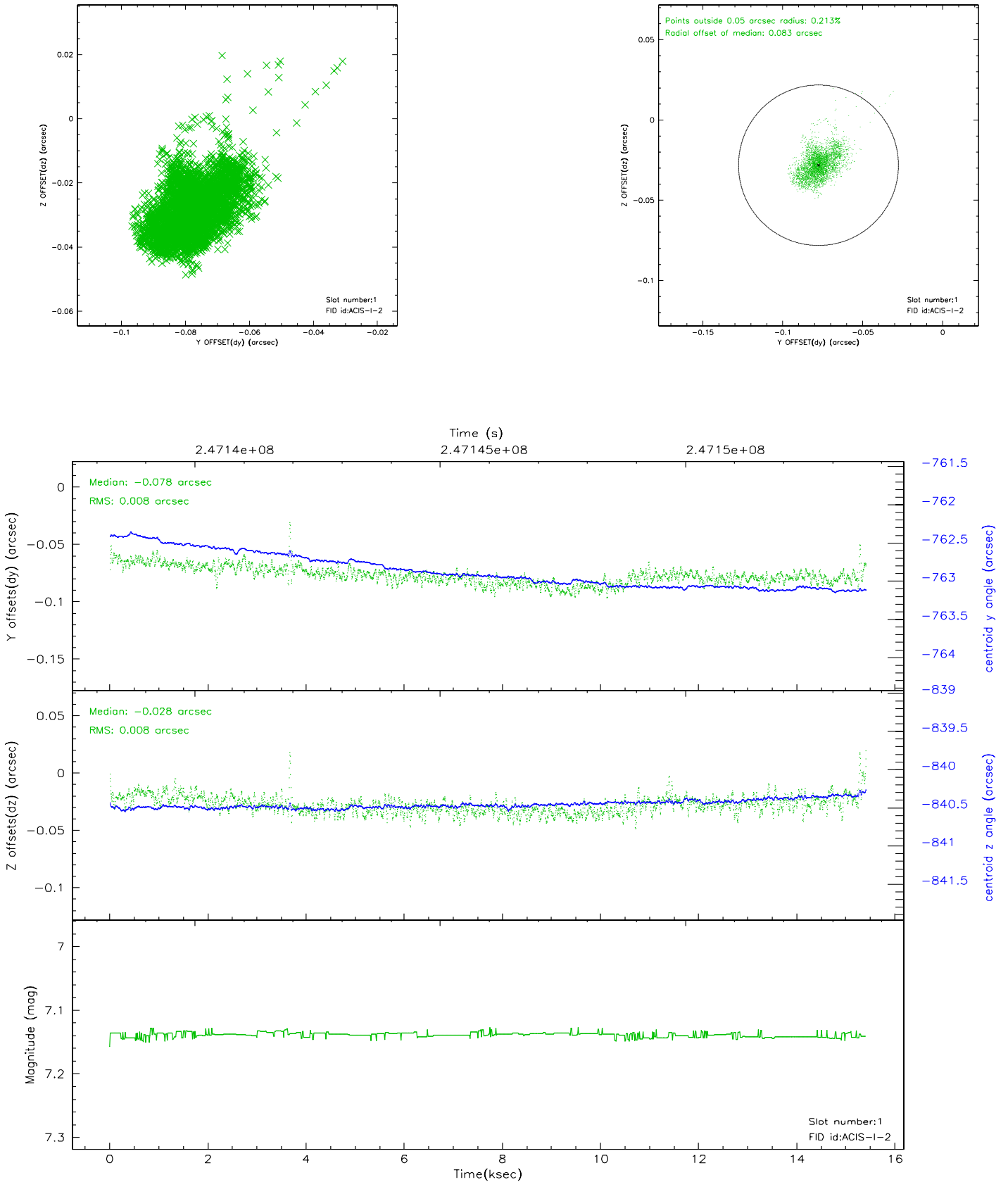


## 2.5 FID Slots

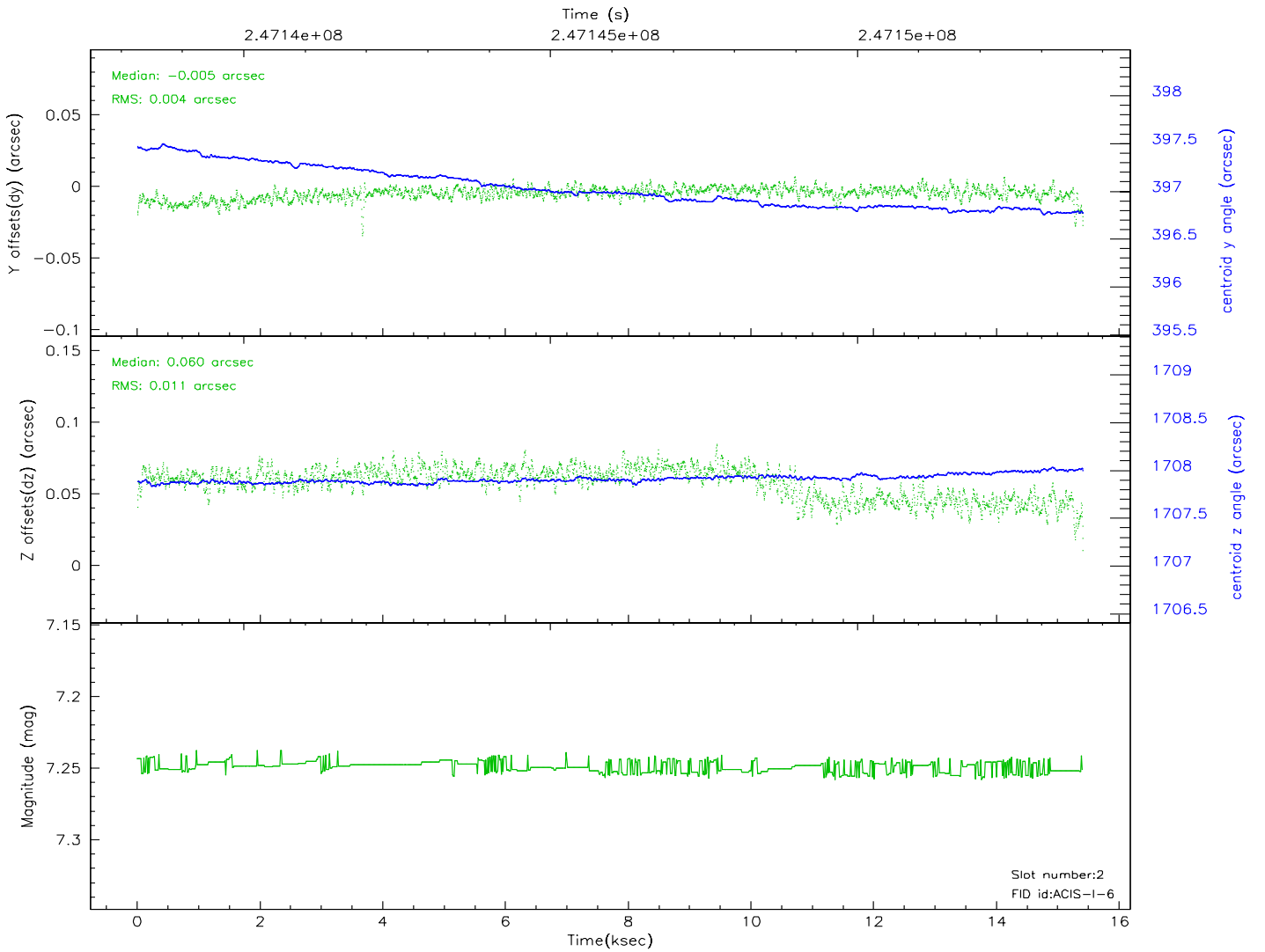
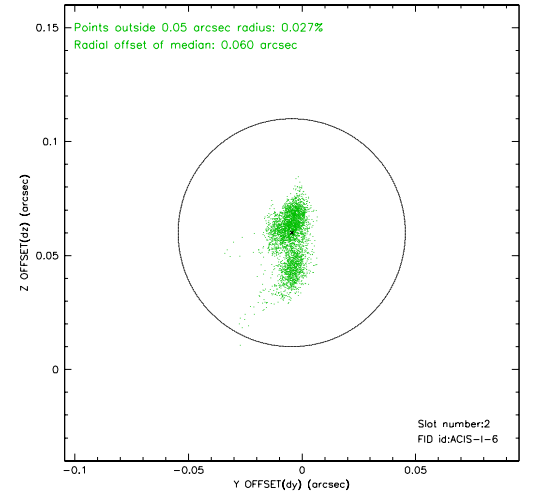
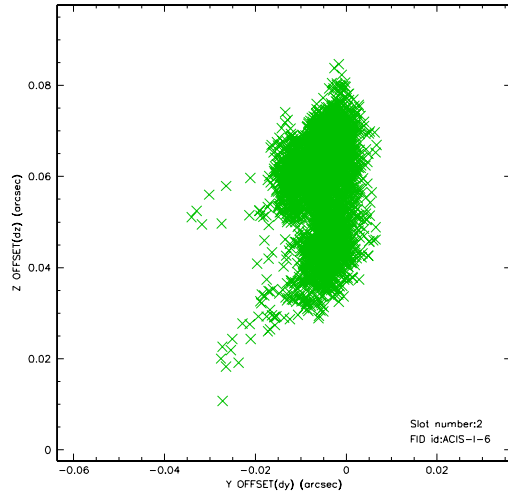
### 2.5.1 Slot 0



## 2.5.2 Slot 1

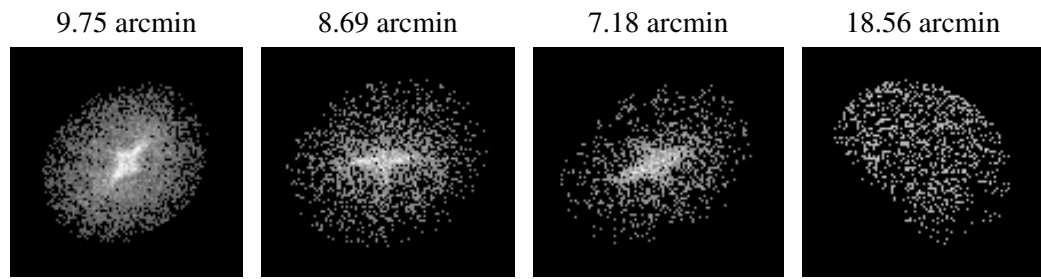


### 2.5.3 Slot 2





### 3 Point Sources



## A Summary

### A.1 Status

V&V Scientist	Beth Sundheim
V&V Date (YYYY-MM-DD)	2006.04.04
V&V Edition	1
V&V Disposition and Status	OK
V&V Charge Time	15.04959

### A.2 Comments