

V&V Reference Report

L2 ASCDS Version : 7.6.7.1

Observation 6384 - L2 Version 002
Chandra X-Ray Center

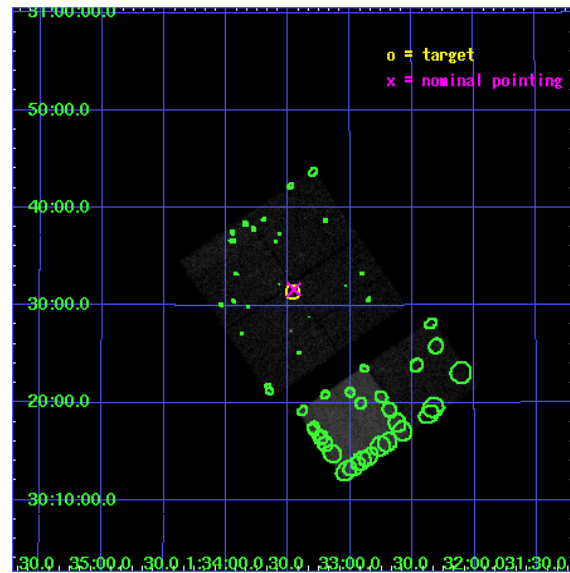
L2 Processing Date : Mar 31 2006

Contents

1	Front	2
2	OBI	3
2.1	OBI	3
2.1.1	Images	3
2.1.2	Bias	3
2.1.3	Parameters	4
2.1.4	Events	4
2.2	Compared Parameters	5
2.3	Aspect	6
2.4	Star Slots	9
2.4.1	Slot 3	9
2.4.2	Slot 4	10
2.4.3	Slot 5	11
2.4.4	Slot 6	12
2.4.5	Slot 7	13
2.5	FID Slots	14
2.5.1	Slot 0	14
2.5.2	Slot 1	15
2.5.3	Slot 2	16
3	Point Sources	17
A	Summary	18
A.1	Status	18
A.2	Comments	18

1 Front

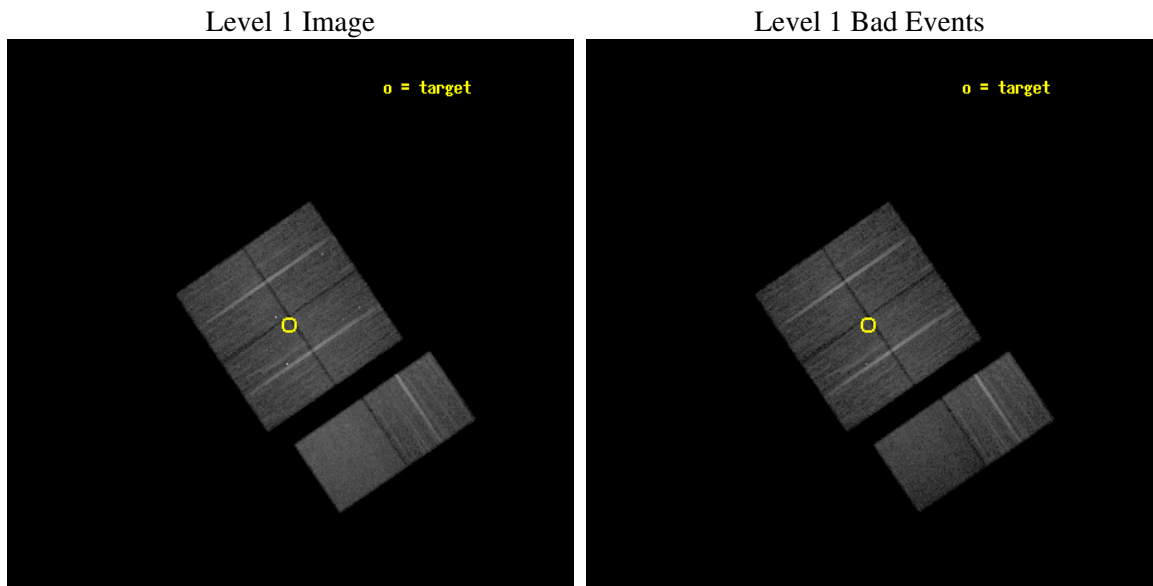
seq_num	600486
obs_id	6384
title	The Chandra ACIS Survey of M33 (ChASeM33): A Deep Survey of the Nearest Face-on Spiral Galaxy
observer	Dr Manami Sasaki
object	M33 Field 5
dtcycle	0
cycle	P
ra_targ	23.36625
dec_targ	30.523694
ra_nom	23.363373599279
dec_nom	30.527569336138
roll_nom	145.71015503785
revision	2
ontime	22451.199916363
livetime	22166.909304532
ontime0	22451.199916363
ontime1	22451.199916363
ontime2	22451.199916363
ontime3	22451.199916363
ontime6	22451.199916363
ontime7	22451.199916363
l2events	128213



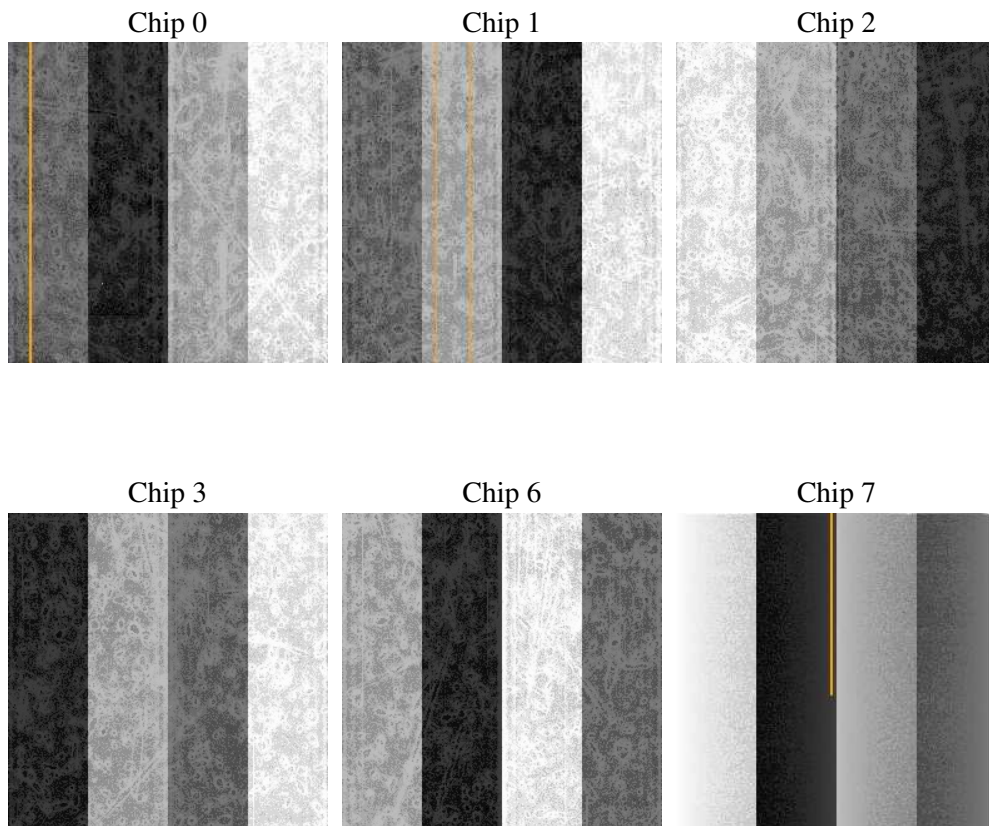
2 OBI

2.1 OBI

2.1.1 Images



2.1.2 Bias



2.1.3 Parameters

obi_num	0
ascdsver	7.6.7.1
caldsver	3.2.1
date	2006-03-31T15:48:43
revision	2

sched_exp_time	22400.000000
ontime	22456.987463564
ontime0	22456.987463564
ontime1	22456.987463564
ontime2	22456.987463564
ontime3	22456.987463564
ontime6	22456.987463564
ontime7	22456.987483472
l1events	825943

2.1.4 Events

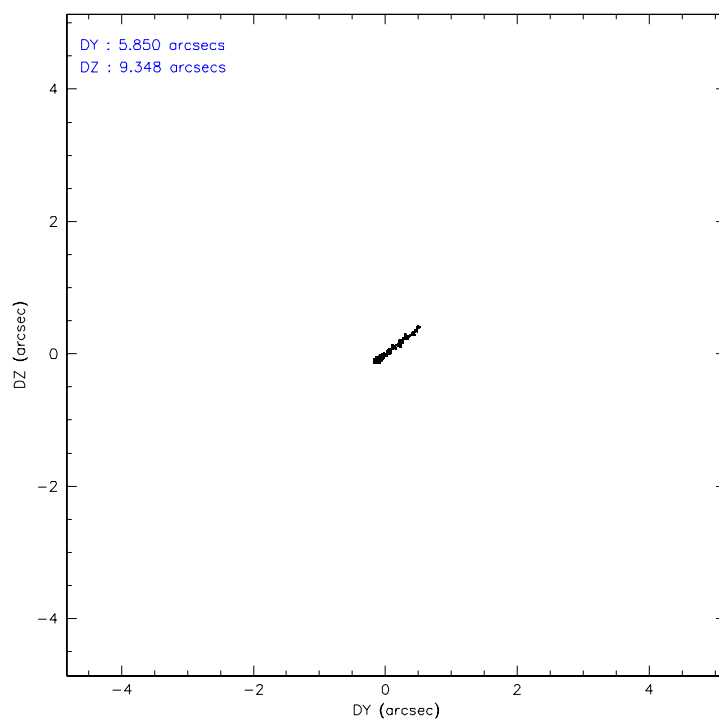
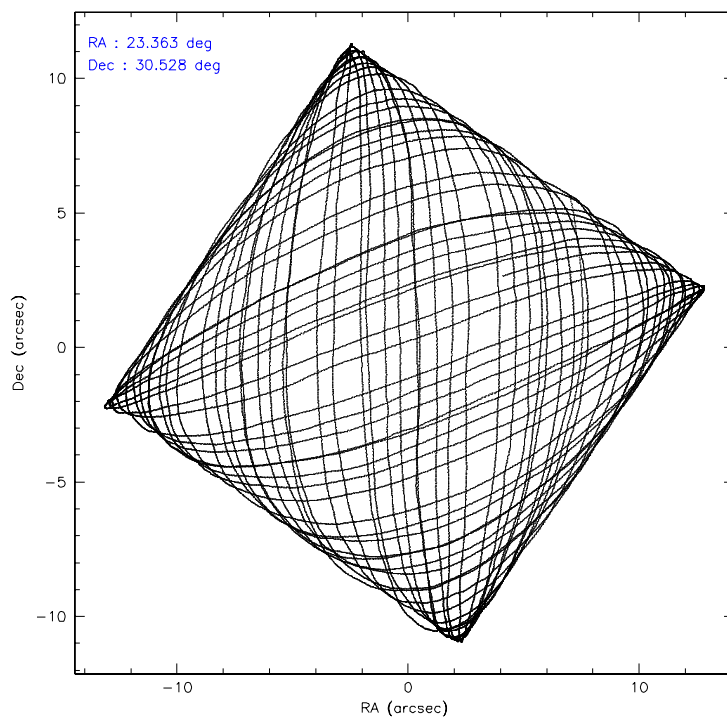
	ccd 0	ccd 1	ccd 2	ccd 3	ccd 6	ccd 7
level 1 events	127340	129525	137846	135586	141727	153919
rejected events	113008	111699	124267	117749	127314	90427
rejected %	88%	86%	90%	86%	89%	58%

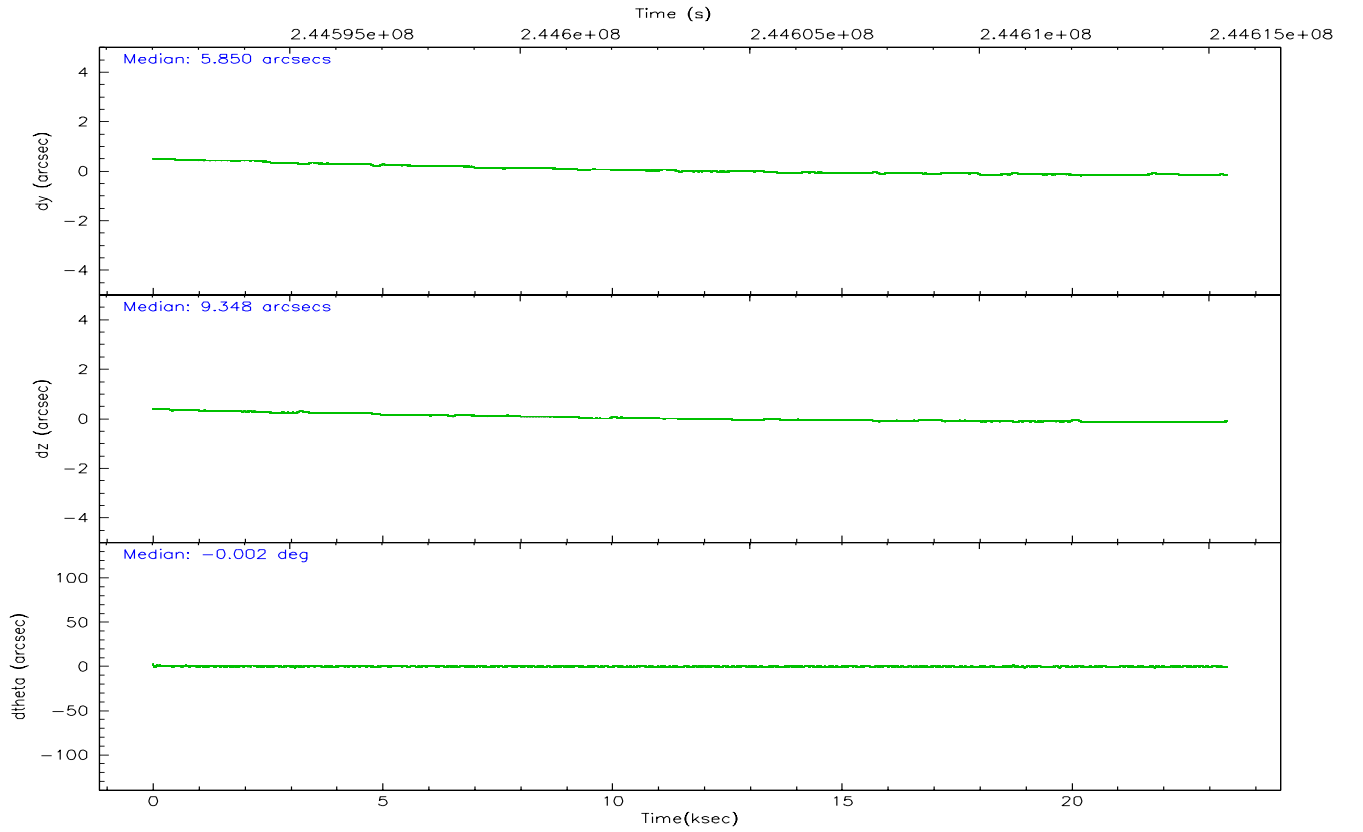
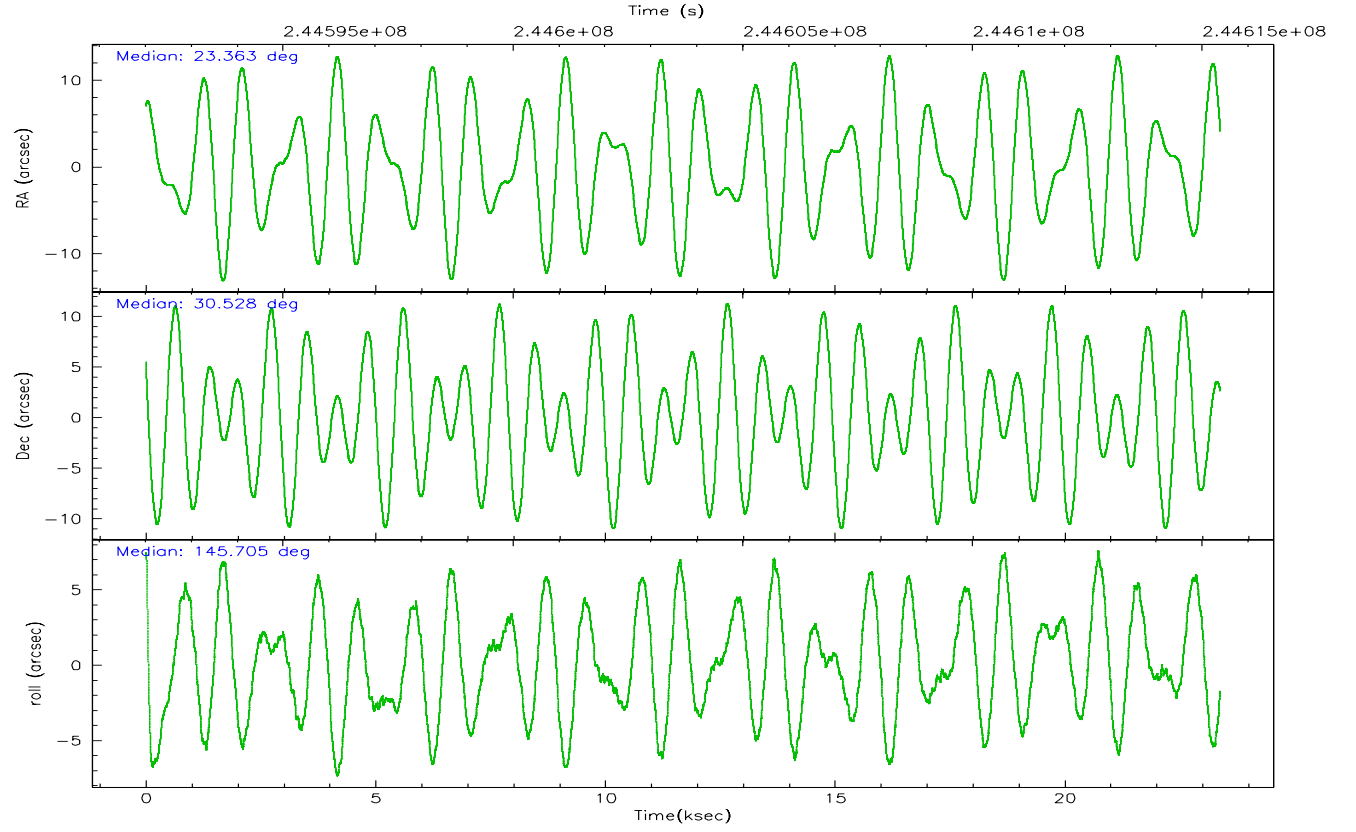
	ccd 0	ccd 1	ccd 2	ccd 3	ccd 6	ccd 7
grade 0 events	5500	7641	5151	8458	4939	3270
	4%	5%	3%	6%	3%	2%
grade 1 events	62	106	72	241	73	75
	0%	0%	0%	0%	0%	0%
grade 2 events	3269	3652	3133	3272	3149	15591
	2%	2%	2%	2%	2%	10%
grade 3 events	1609	1732	1455	1656	1547	3534
	1%	1%	1%	1%	1%	2%
grade 4 events	1432	1761	1416	1625	1547	3418
	1%	1%	1%	1%	1%	2%
grade 5 events	4725	5253	4351	5506	5766	11644
	3%	4%	3%	4%	4%	7%
grade 6 events	2526	3044	2427	2829	3238	37694
	1%	2%	1%	2%	2%	24%
grade 7 events	108217	106336	119841	111999	121468	78693
	84%	82%	86%	82%	85%	51%

2.2 Compared Parameters

Parameter	Planned	Actual	Parameter	Planned	Actual
Instrument	ACIS	ACIS	Obspar format version number	6	6
Detector	ACIS-012367	ACIS-012367	Obspar file type	PREDICTED	ACTUAL
Grating	NONE	NONE	Obspar update status	NONE	UPDATED
Data mode	VFAINT	VFAINT	On-chip summing requested	N	N
Observation mode	POINTING	POINTING	Subarray requested	NONE	NONE
Pointing RA	23.395045	23.36337359927897	Alternating exposures requested	N	N
Pointing Dec	30.525656	30.52756933613827	Primary exposure time	0.000000	3.2
Pointing Roll	145.485377	145.7101550378489			
SIM focus pos (mm)	-0.782348	-0.7809083437167272			
SIM defocus (mm)	0	0.001439871863259334			
SIM translation stage pos (mm)	-233.592463	-233.5874344608287			
SIM translation stage offset (mm)	0	-0.005018542100998502			
Observation start time	244592995.184000	244591587.87765			
Observation start date	2005-10-01T22:28:51	2005-10-01T22:06:27			
Observation end time	244615395.184000	244616046.42878			
Observation end date	2005-10-02T04:42:11	2005-10-02T04:54:06			
Read mode	TIMED	TIMED			

2.3 Aspect



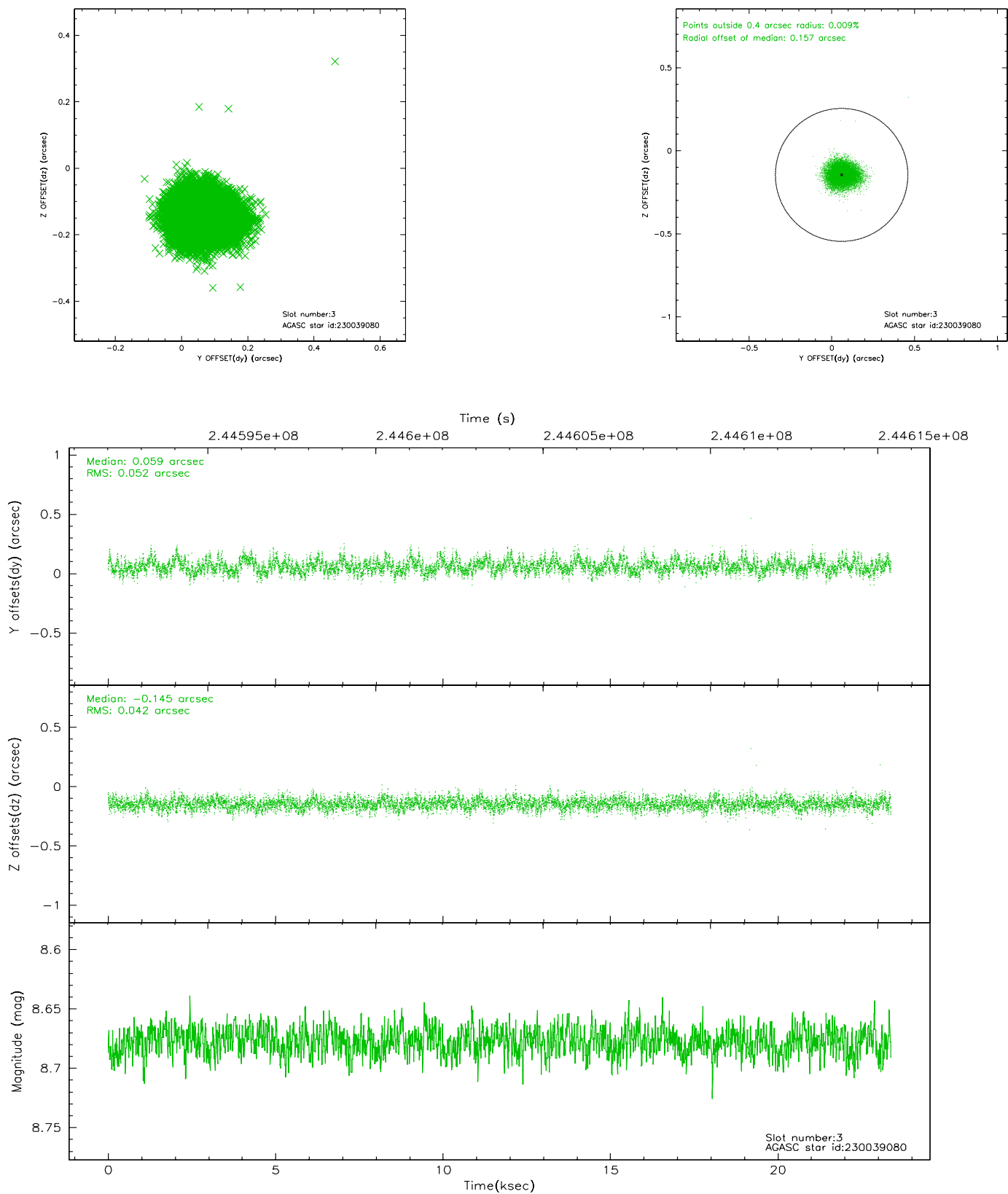


Slot Statistics

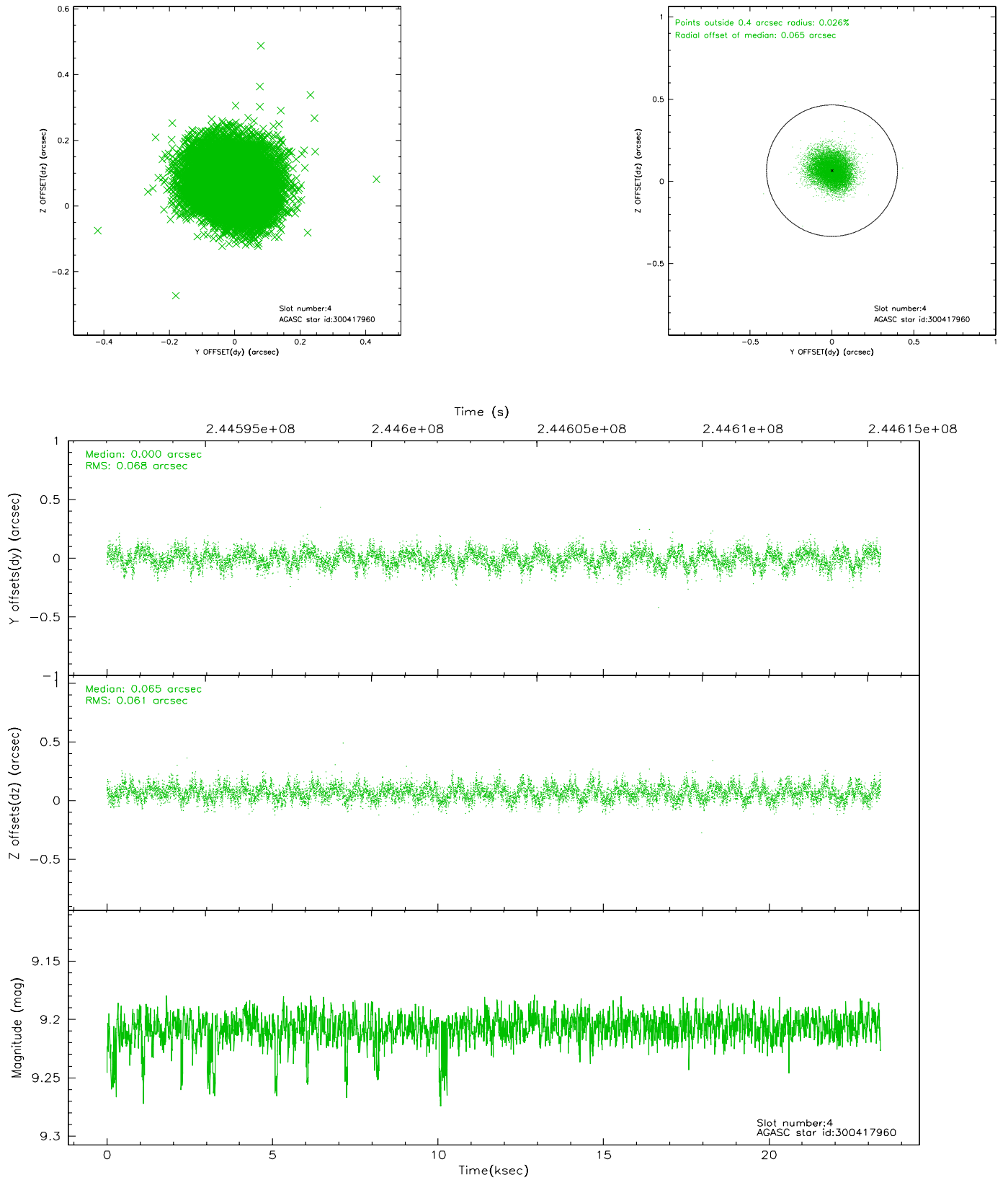
slot	status	id	mag	n_pts	med_dy	med_dz	dr1	dr2	ra	dec	mean_y	mean_z
0	FID	ACIS-I-1	7.25	5704	-0.015	0.055	0.008	0.015	0.000000	0.000000	933.78	-832.79
1	FID	ACIS-I-5	7.23	5703	-0.126	0.022	0.006	0.011	0.000000	0.000000	-1814.37	1064.58
2	FID	ACIS-I-6	7.26	5702	0.050	-0.007	0.010	0.017	0.000000	0.000000	399.23	1709.22
3	GUIDE	230039080	8.68	11408	0.059	-0.145	0.071	0.114	23.320866	29.887774	-1110.31	2023.24
4	GUIDE	300417960	9.21	11398	0.000	0.065	0.098	0.155	22.346894	30.364196	2361.91	2311.92
5	GUIDE	300553080	9.05	11405	-0.015	0.086	0.073	0.119	23.777101	30.773227	-467.05	-1405.25
6	GUIDE	300559160	9.40	11394	0.060	0.094	0.094	0.150	24.161026	30.632205	-1732.80	-1667.20
7	GUIDE	300559960	7.87	11407	-0.109	-0.101	0.056	0.090	22.944463	30.624765	1353.37	494.57

2.4 Star Slots

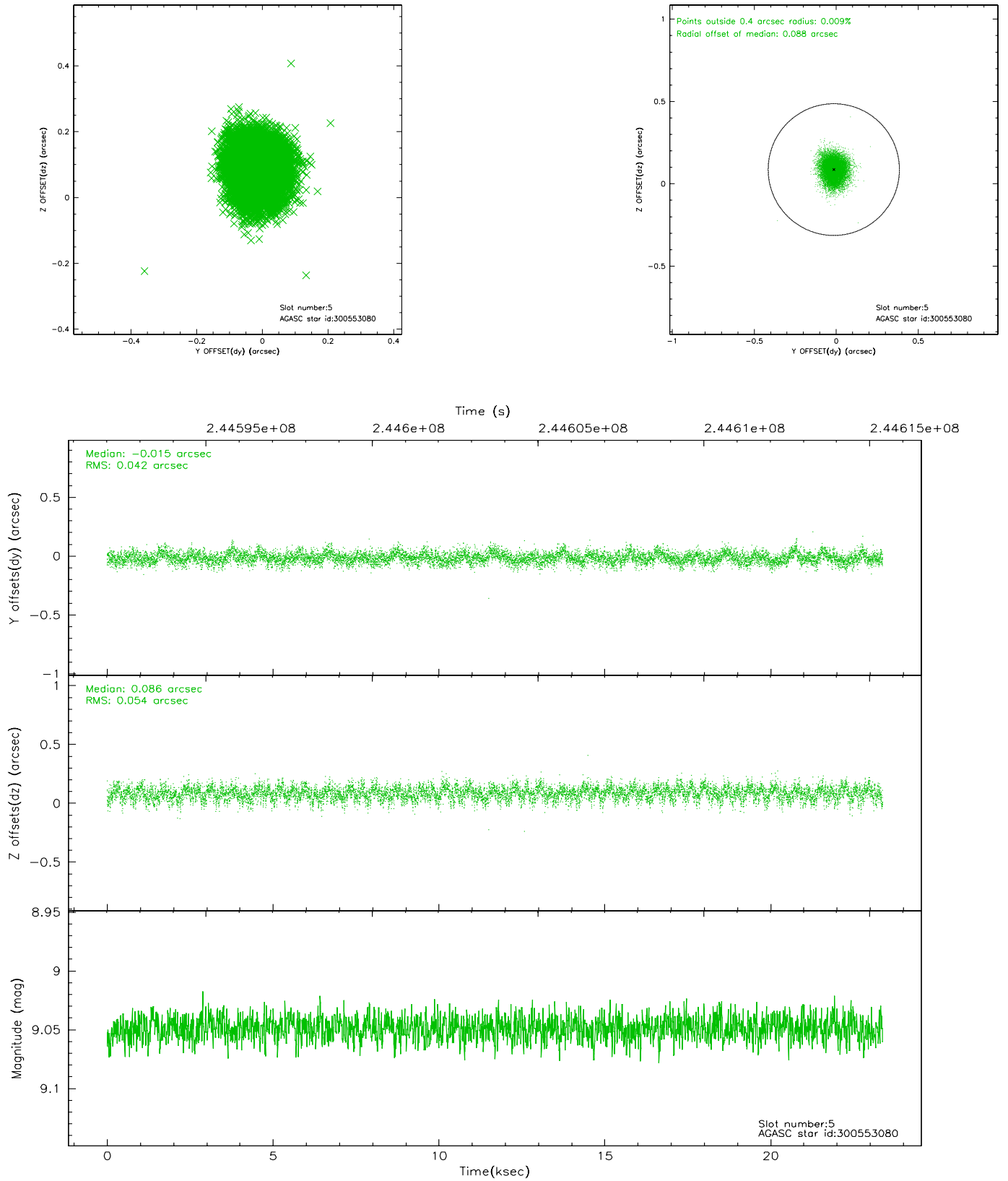
2.4.1 Slot 3



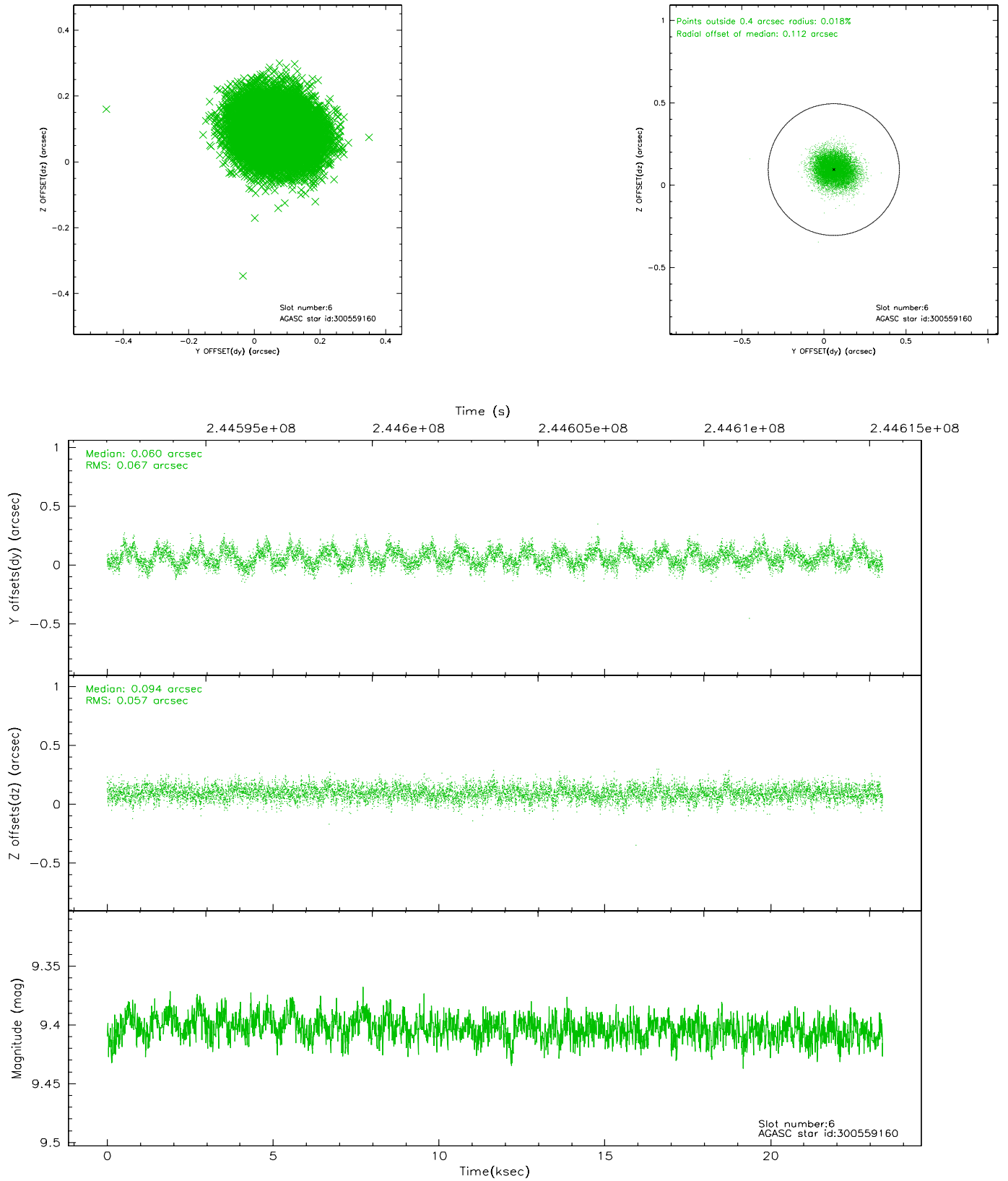
2.4.2 Slot 4



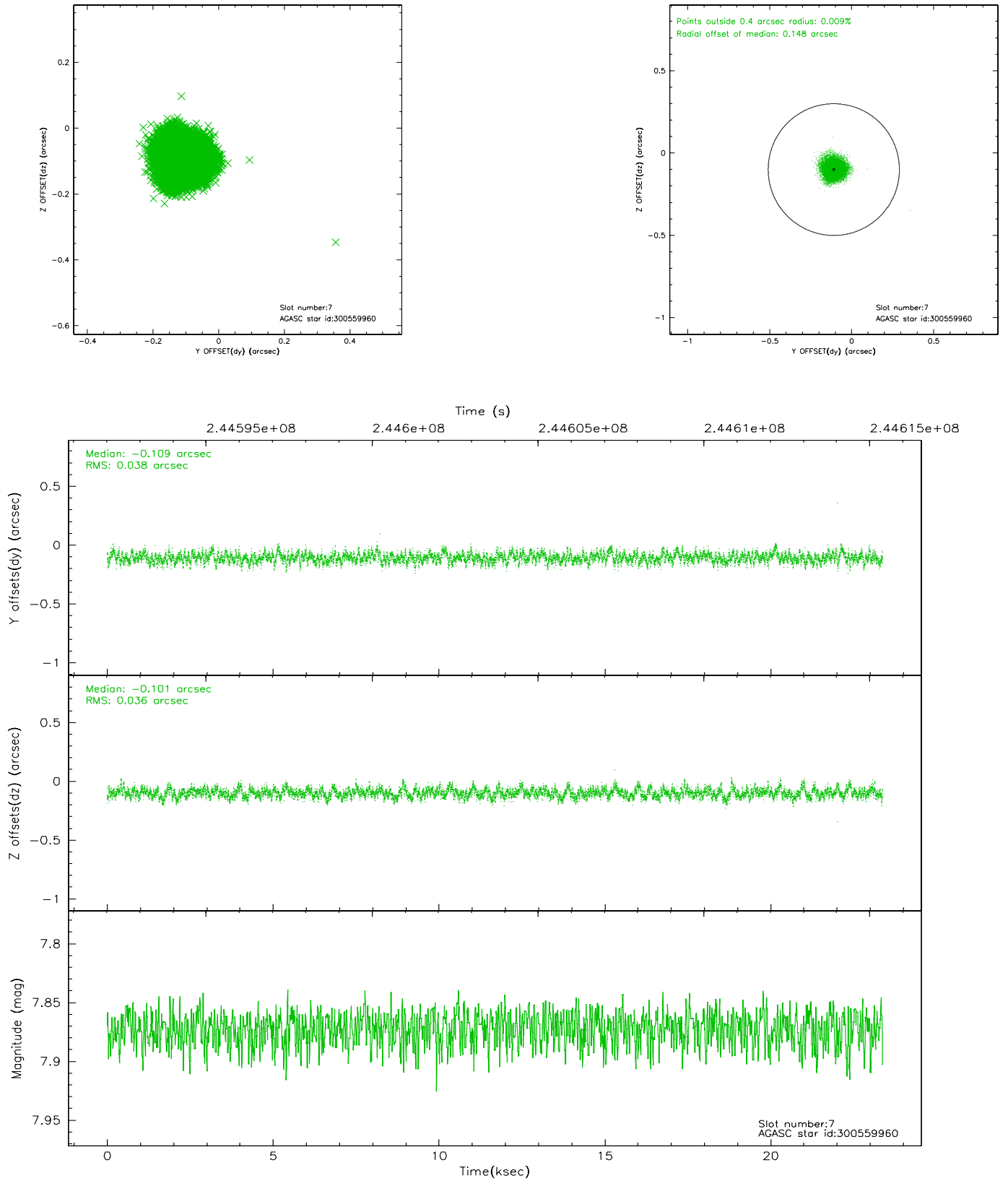
2.4.3 Slot 5



2.4.4 Slot 6

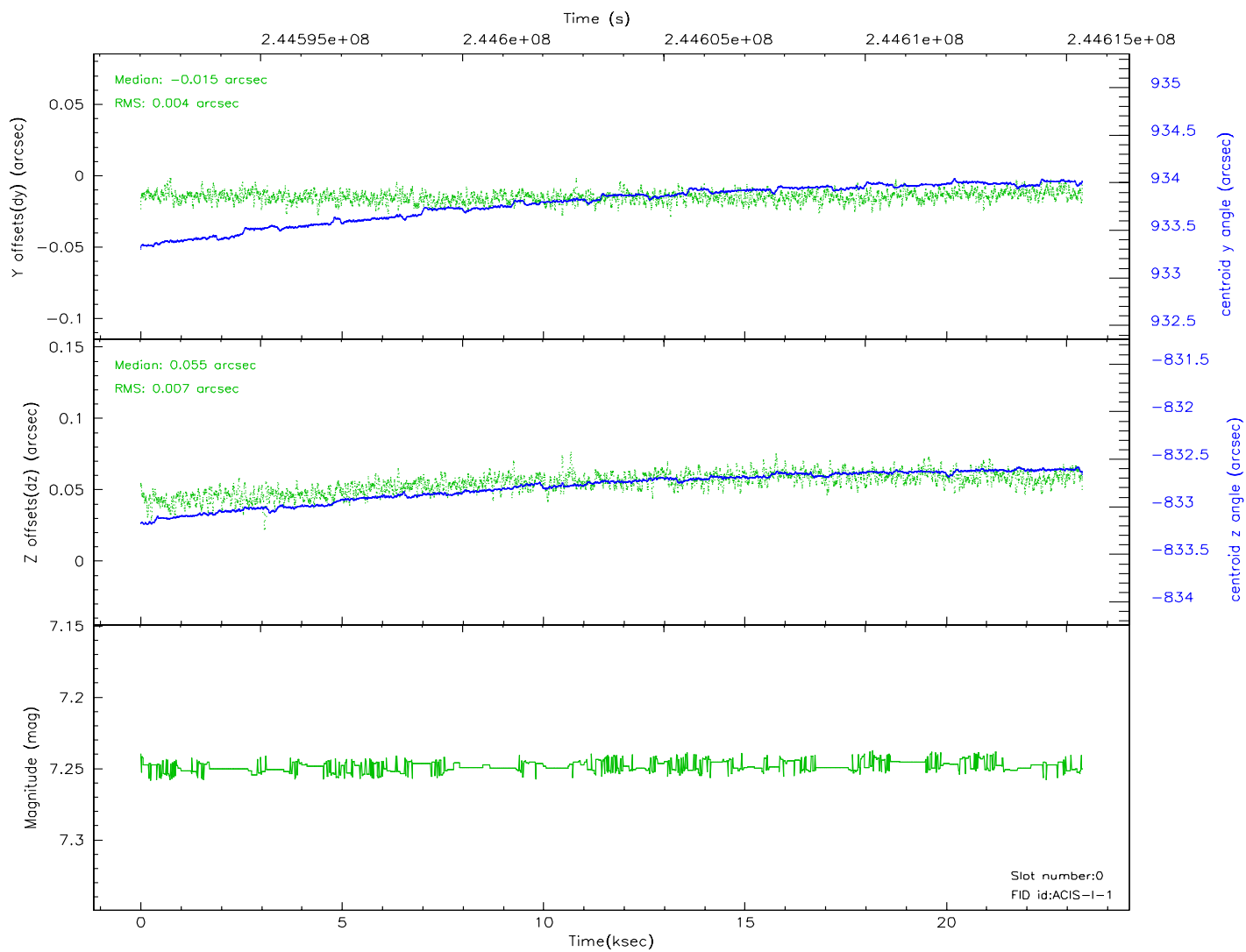
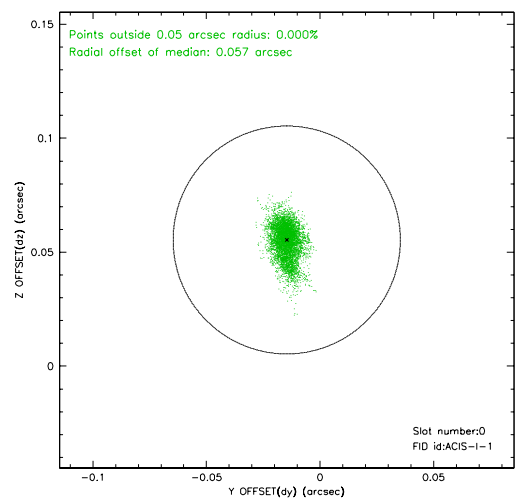
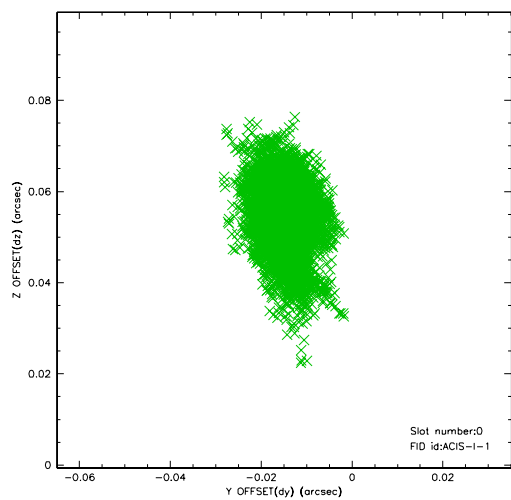


2.4.5 Slot 7

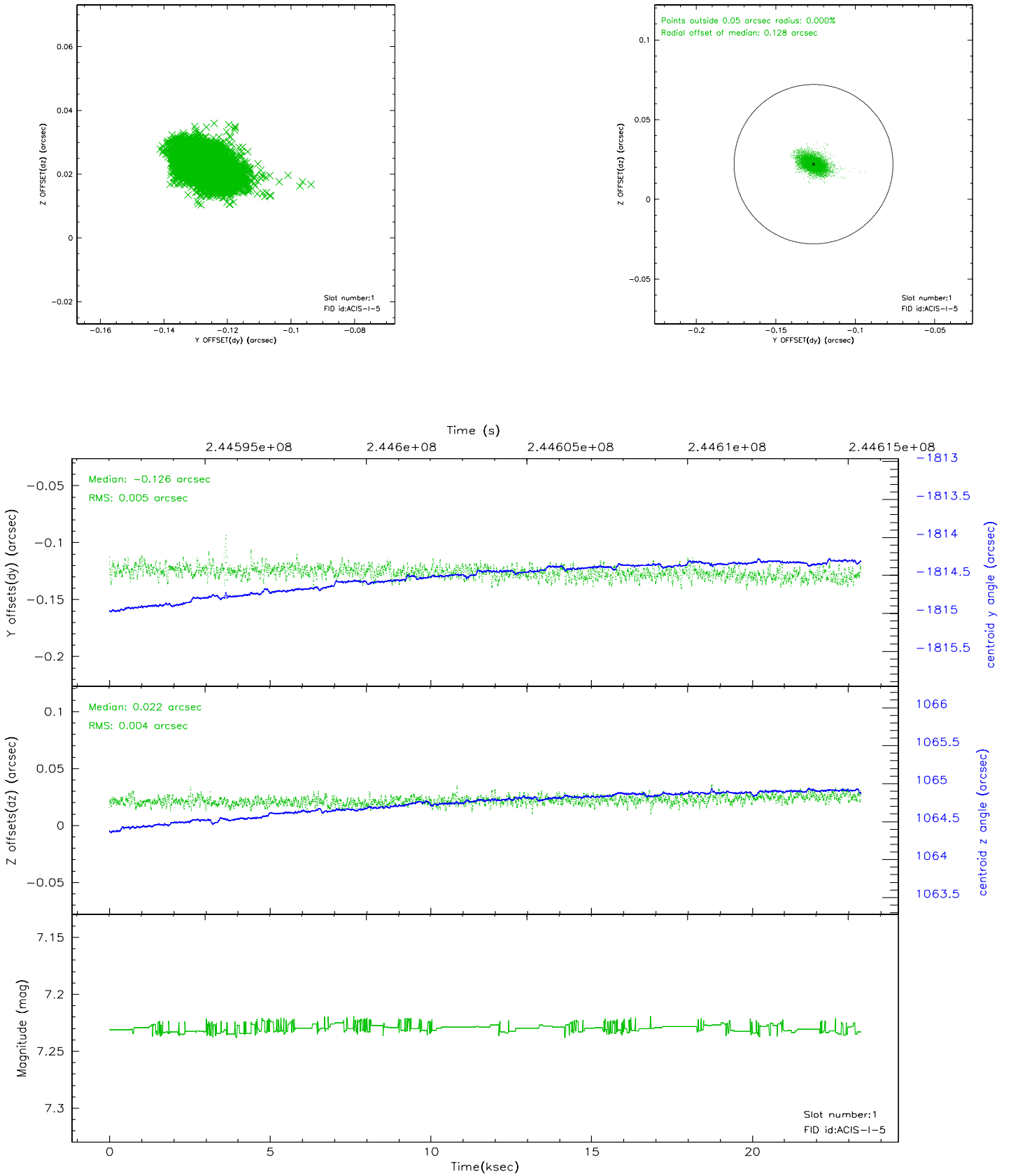


2.5 FID Slots

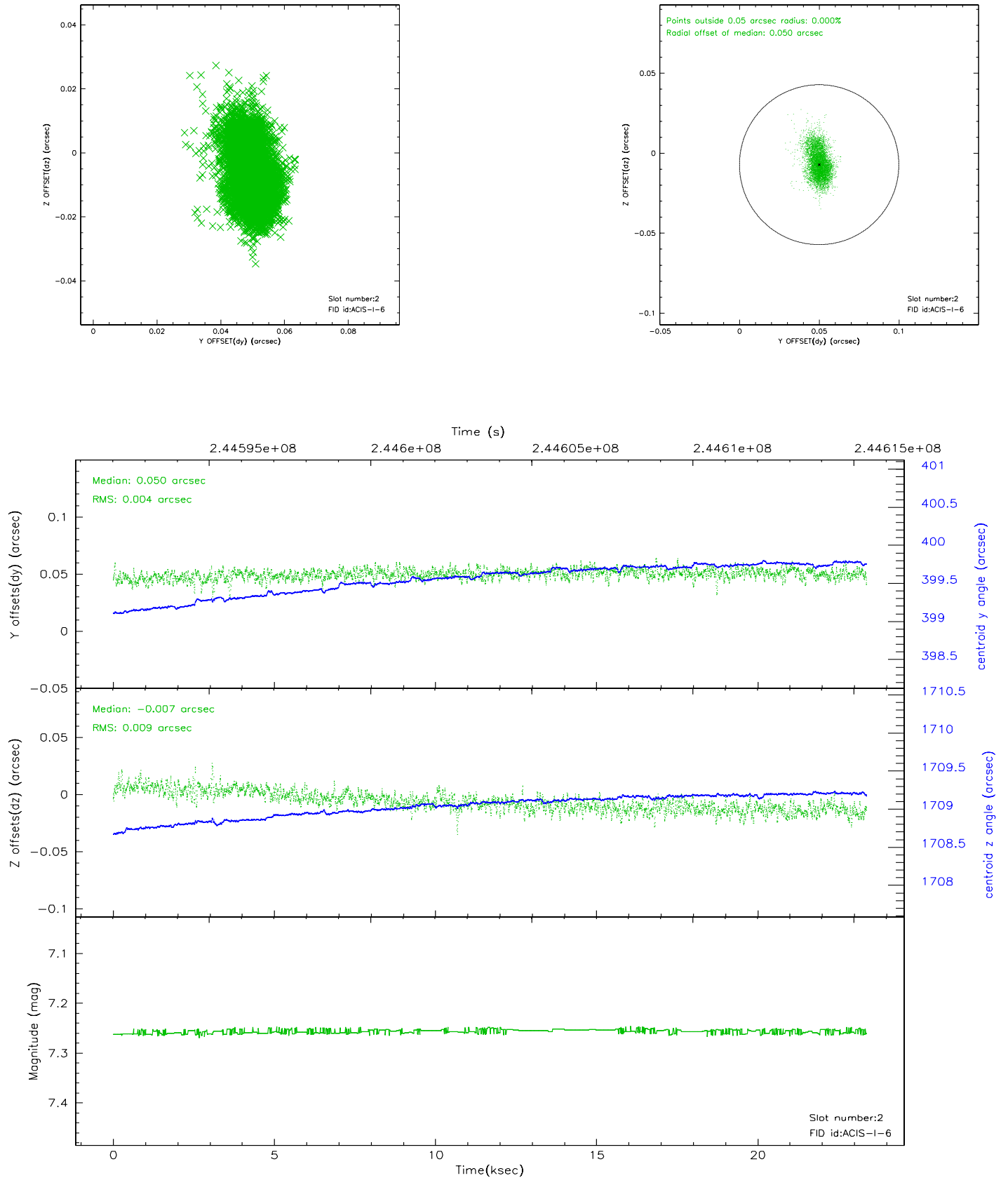
2.5.1 Slot 0



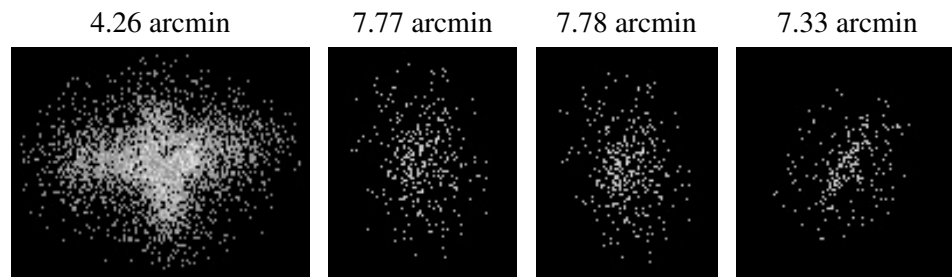
2.5.2 Slot 1



2.5.3 Slot 2



3 Point Sources



A Summary

A.1 Status

V&V Scientist	Beth Sundheim
V&V Date (YYYY-MM-DD)	2006.03.31
V&V Edition	1
V&V Disposition and Status	OK
V&V Charge Time	22.45119

A.2 Comments

Focsl plane temperature is elevated throughout observation.