

# V&V Reference Report

## L2 ASCDS Version : 8.4.3.1

Observation 8457 - L2 Version 2  
Chandra X-Ray Center

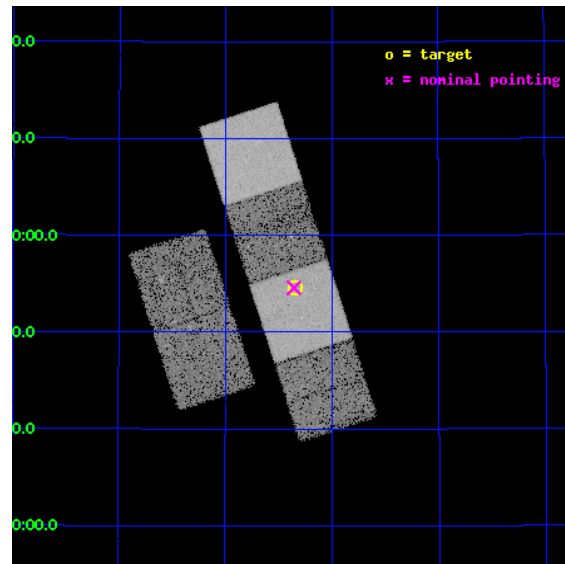
L2 Processing Date : Apr 12 2012

## Contents

<b>1</b>	<b>Front</b>	<b>2</b>
<b>2</b>	<b>OBI</b>	<b>3</b>
2.1	OBI . . . . .	3
2.1.1	Images . . . . .	3
2.1.2	Bias . . . . .	3
2.1.3	Parameters . . . . .	4
2.1.4	Events . . . . .	4
2.2	Compared Parameters . . . . .	5
2.3	Aspect . . . . .	6
2.4	Star Slots . . . . .	9
2.4.1	Slot 3 . . . . .	9
2.4.2	Slot 4 . . . . .	10
2.4.3	Slot 5 . . . . .	11
2.4.4	Slot 6 . . . . .	12
2.4.5	Slot 7 . . . . .	13
2.5	FID Slots . . . . .	14
2.5.1	Slot 0 . . . . .	14
2.5.2	Slot 1 . . . . .	15
2.5.3	Slot 2 . . . . .	16
<b>A</b>	<b>Summary</b>	<b>17</b>
A.1	Status . . . . .	17
A.2	Comments . . . . .	17

# 1 Front

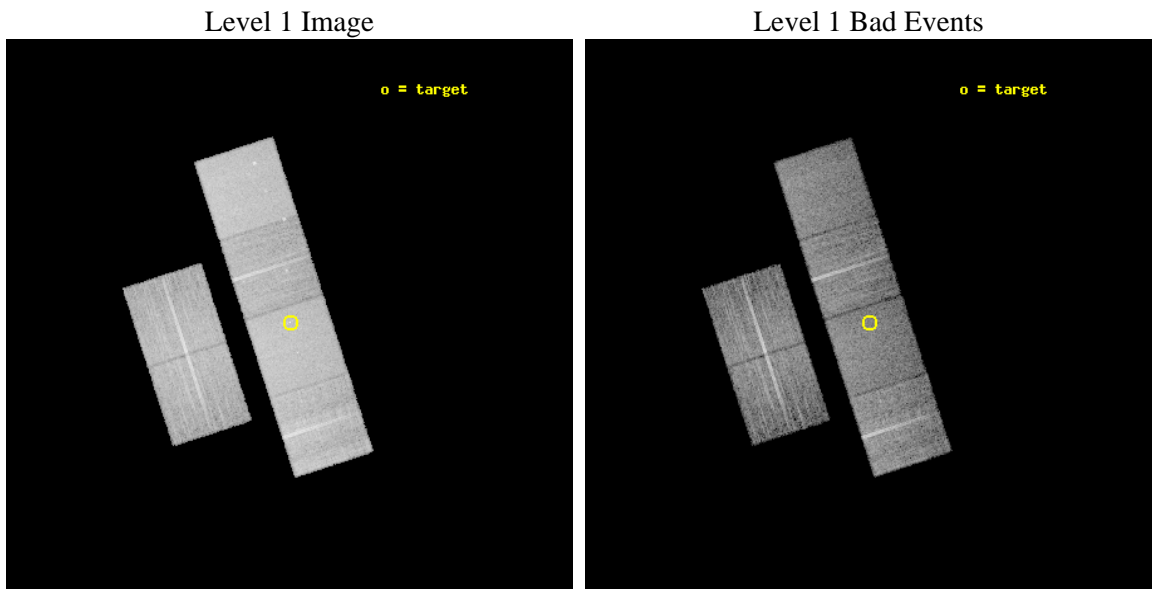
seq_num	500815	Sequence number
obs_id	8457	Observation id
title	X-Ray Emission from the Type Ib SN 2006jc	Proposal title
observer	Dr Stefan Immler	Principal investigator
object	SN 2006jc	Source name
dtcycle	0	&#160
cycle	P	events from which exps? Prim/Second/Both
ra_targ	139.336667	Observer's specified target RA [deg]
dec_targ	41.909083	Observer's specified target Dec [deg]
ra_nom	139.3392647245	Nominal RA [deg]
dec_nom	41.909753301148	Nominal Dec [deg]
roll_nom	72.049394184454	Nominal Roll [deg]
revision	2	Processing version of data
ontime	9961.5999629498	Sum of GTIs [s]
livetime	9835.4601860635	Livetime [s]
ontime2	9961.5999629498	Sum of GTIs [s]
ontime3	9961.5999629498	Sum of GTIs [s]
ontime5	9961.5999629498	Sum of GTIs [s]
ontime6	9961.5999629498	Sum of GTIs [s]
ontime7	9961.5999629498	Sum of GTIs [s]
ontime8	9961.5999629498	Sum of GTIs [s]
l2events	150130	Number of level 2 events



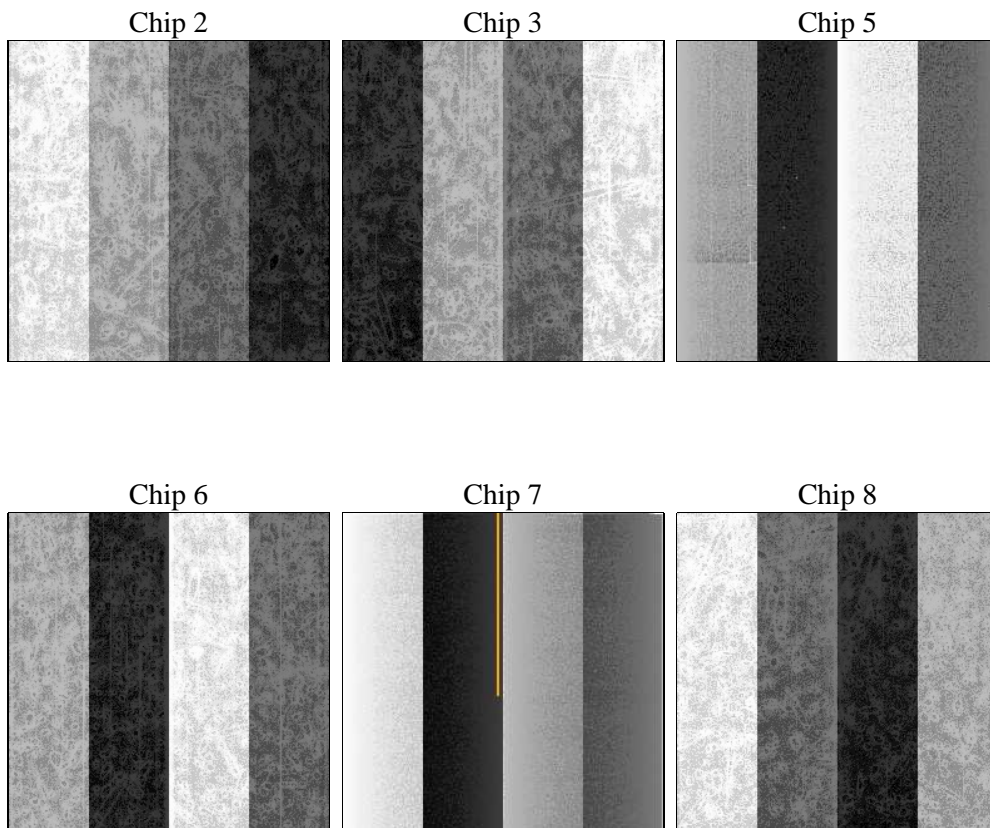
## 2 OBI

### 2.1 OBI

#### 2.1.1 Images



#### 2.1.2 Bias



### 2.1.3 Parameters

obi_num	0	Obi number	sched_exp_time	10000.000000	[s] Scheduled observation exposure time
ascdsver	8.4.3.1	Processing system revision	ontime	9961.5999629498	Sum of GTIs [s]
caldsver	4.4.9	&#160	ontime2	9961.5999629498	Sum of GTIs [s]
date	2012-04-12T23:23:57	Date and time of file creation	ontime3	9961.5999629498	Sum of GTIs [s]
revision	2	Processing version of data	ontime5	9961.5999629498	Sum of GTIs [s]
			ontime6	9961.5999629498	Sum of GTIs [s]
			ontime7	9961.5999629498	Sum of GTIs [s]
			ontime8	9961.5999629498	Sum of GTIs [s]
			l1events	657518	Number of level 1 events

### 2.1.4 Events

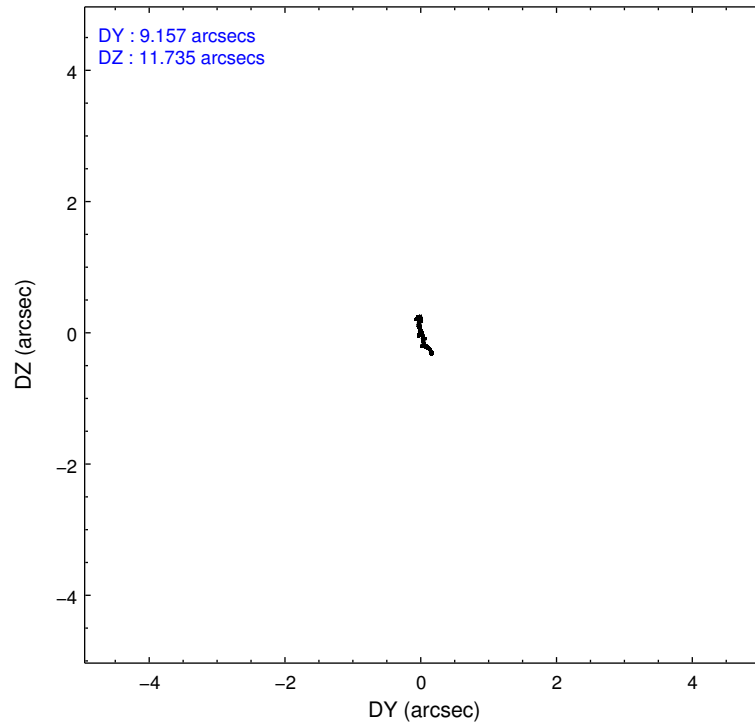
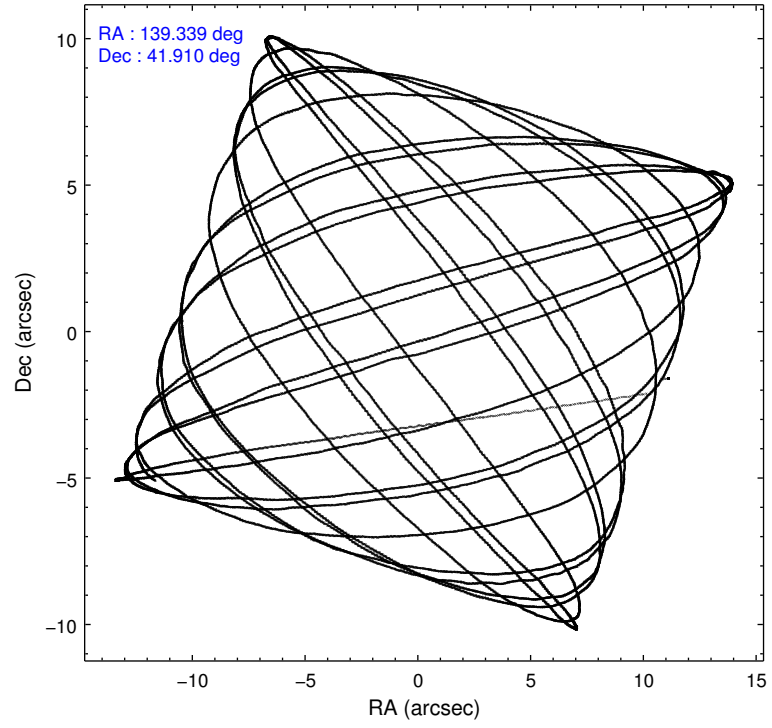
	ccd 2	ccd 3	ccd 5	ccd 6	ccd 7	ccd 8		ccd 2	ccd 3	ccd 5	ccd 6	ccd 7	ccd 8
level 1 events	96185	89156	136706	92229	125544	117698	grade 0 events	4796	4663	4442	4494	4588	8466
rejected events	85332	78437	74805	81099	73116	91284		4%	5%	3%	4%	3%	7%
rejected %	88%	87%	54%	87%	58%	77%	grade 1 events	64	70	213	52	111	95
								0%	0%	0%	0%	0%	0%
							grade 2 events	2294	2095	18809	2397	10703	5949
								2%	2%	13%	2%	8%	5%
							grade 3 events	997	1009	2440	994	4506	2753
								1%	1%	1%	1%	3%	2%
							grade 4 events	1031	1041	2282	1018	4475	2614
								1%	1%	1%	1%	3%	2%
							grade 5 events	3477	4098	9775	4260	11873	5752
								3%	4%	7%	4%	9%	4%
							grade 6 events	1736	1913	33943	2231	28174	6659
								1%	2%	24%	2%	22%	5%
							grade 7 events	81790	74267	64802	76783	61114	85410
								85%	83%	47%	83%	48%	72%

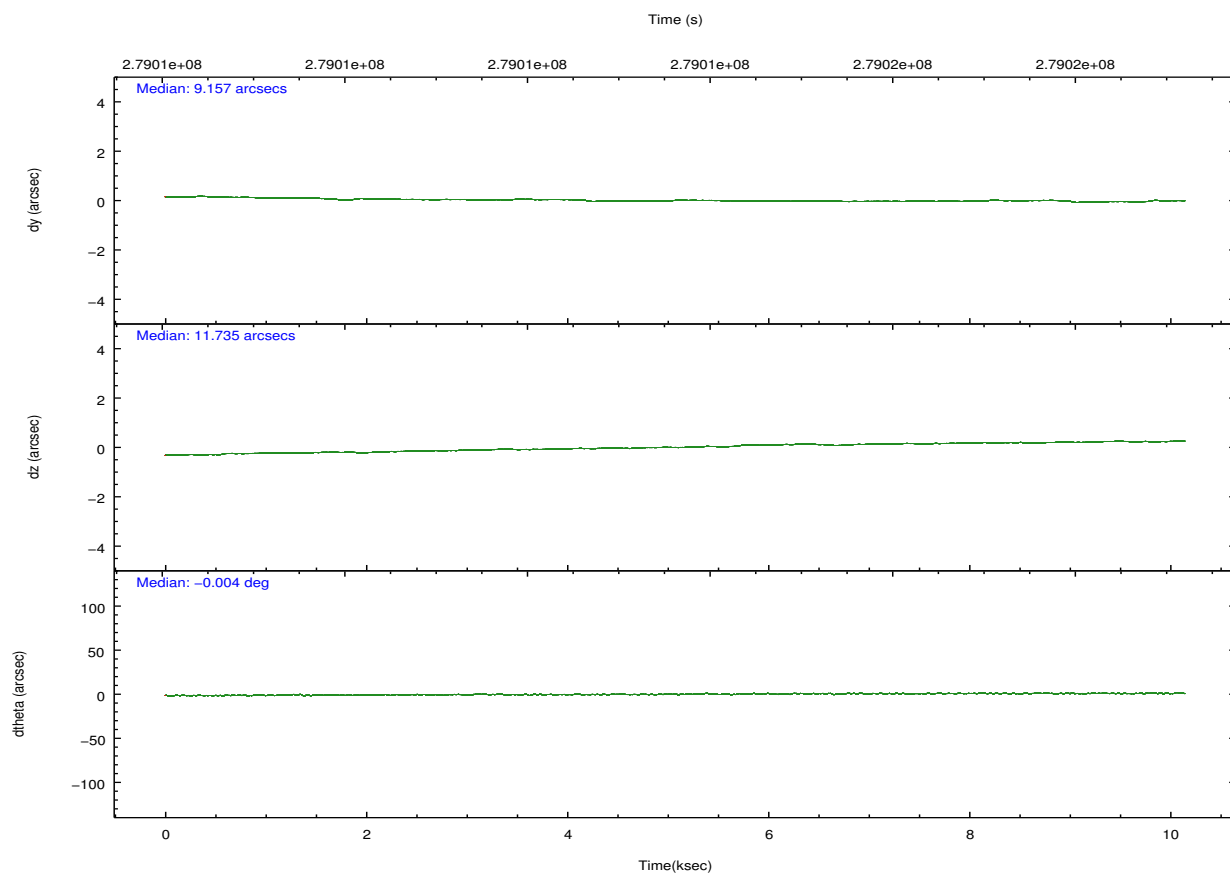
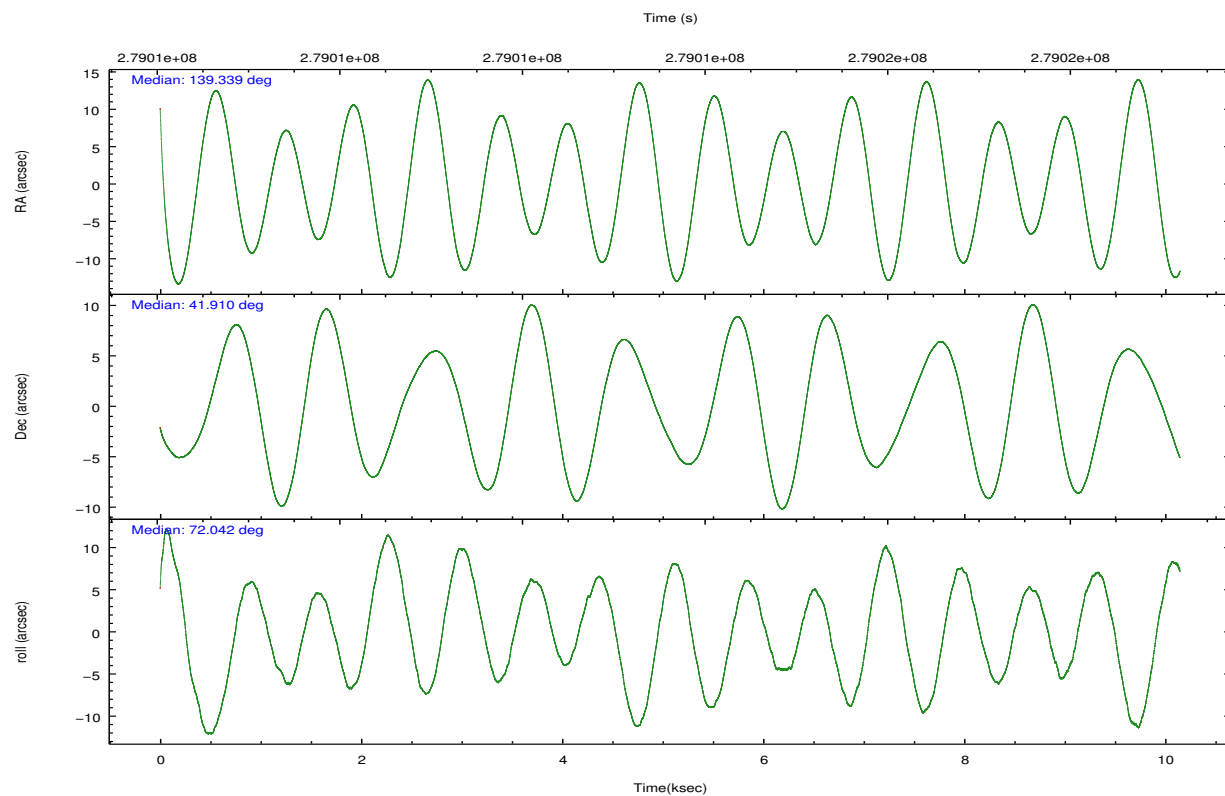


## 2.2 Compared Parameters

Parameter	Planned	Actual	Parameter	Planned	Actual
Instrument	ACIS	ACIS	Obspar format version number	7	7
Detector	ACIS-235678	ACIS-235678	Obspar file type	PREDICTED	ACTUAL
Grating	NONE	NONE	Obspar update status	NONE	UPDATED
Data mode	FAINT	FAINT	Number of optional ACIS chips dropped	0	0
Observation mode	POINTING	POINTING	On-chip summing requested	N	N
[deg] Pointing RA	139.347440	139.3392647245021	Subarray requested	NONE	NONE
[deg] Pointing Dec	41.883197	41.90975330114813	Alternating exposures requested	N	N
[deg] Pointing Roll	71.887306	72.04939418445373	[s] Primary exposure time	0.000000	3.2
[mm] SIM focus pos	-0.684267	-0.6828225247311905			
[mm] SIM defocus	0	0.001444936568705701			
[mm] SIM translation stage pos	-190.132523	-190.1400660498719			
[mm] SIM translation stage offset	0	0.00754346686406393			
[s] Observation start time (MET)	279008684.184000	279007719.79423			
Observation start date	2006-11-04T06:23:39	2006-11-04T06:08:39			
[s] Observation end time (MET)	279018684.184000	279019446.30729			
Observation end date	2006-11-04T09:10:19	2006-11-04T09:24:06			
Read mode	TIMED	TIMED			

## 2.3 Aspect



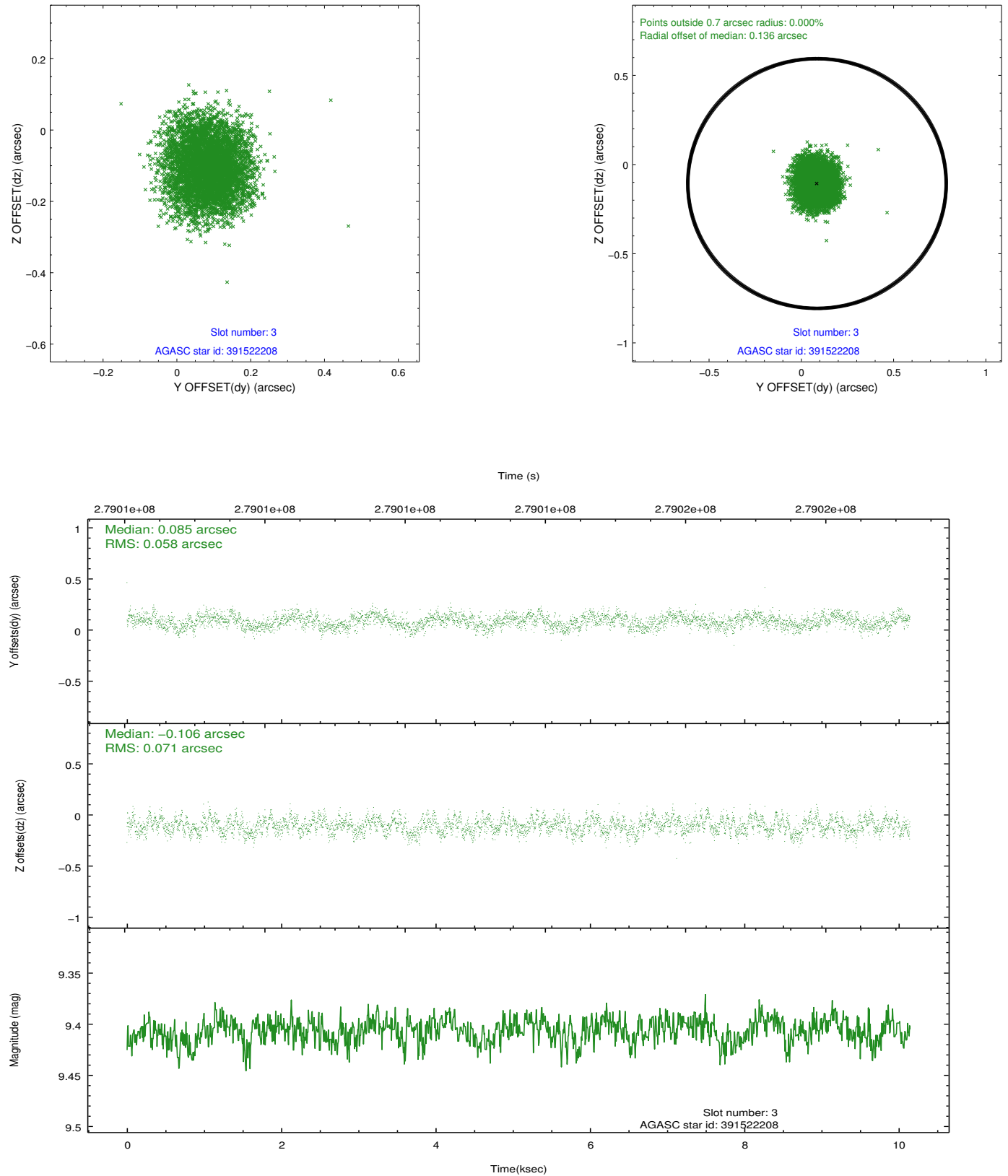


### Slot Statistics

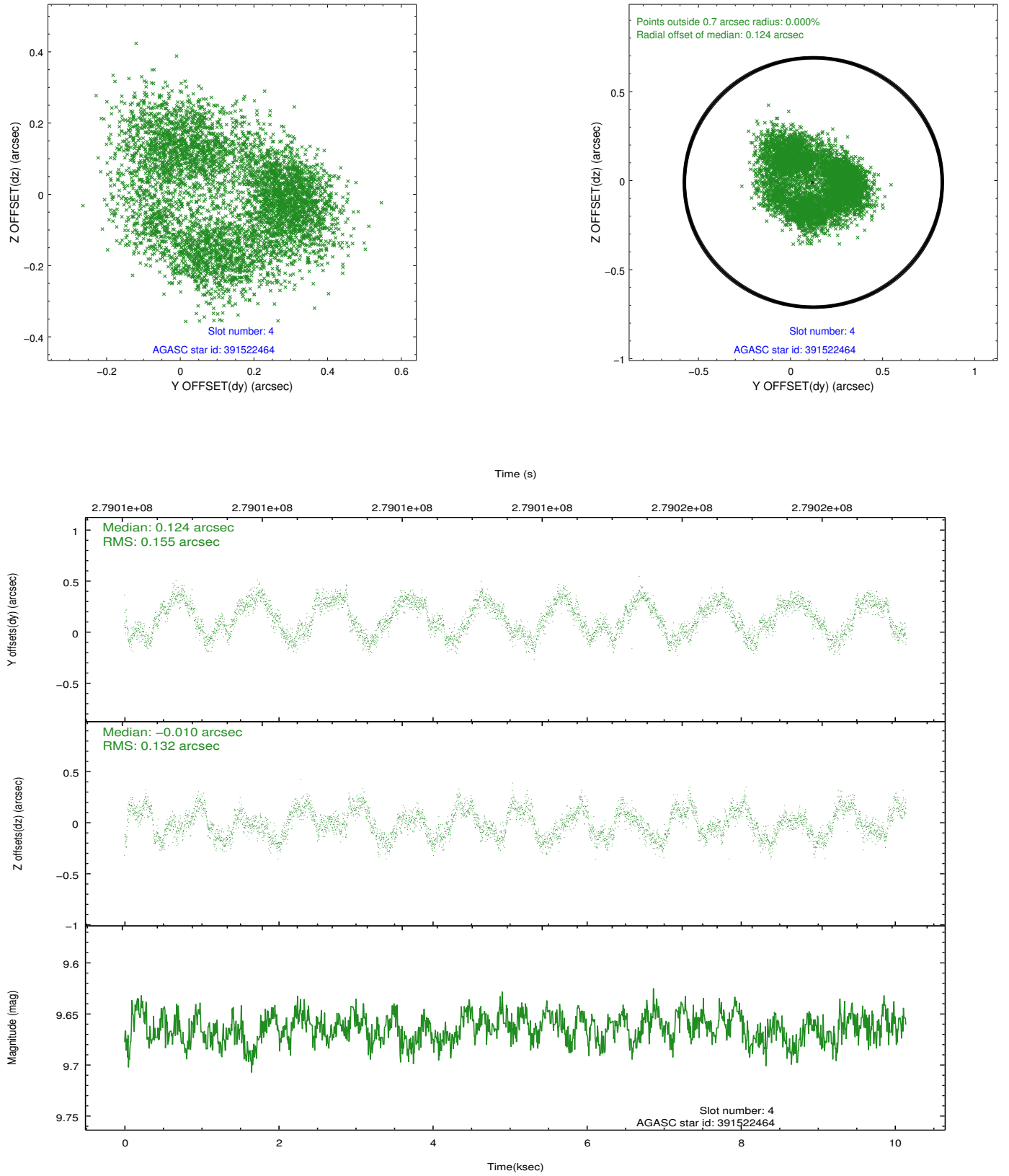
slot	status	id	mag	n_pts	med_dy	med_dz	dr1	dr2	ra	dec	mean_y	mean_z
0	FID	ACIS-S-2	7.11	2475	-0.033	-0.036	0.009	0.014	0.000000	0.000000	-762.01	-1733.07
1	FID	ACIS-S-4	7.21	2475	0.163	0.026	0.006	0.010	0.000000	0.000000	2151.22	174.95
2	FID	ACIS-S-5	7.23	2475	-0.161	0.019	0.008	0.014	0.000000	0.000000	-1814.32	169.19
3	GUIDE	391522208	9.41	4945	0.085	-0.106	0.099	0.154	138.687550	41.907554	-459.74	1709.50
4	GUIDE	391522464	9.66	4939	0.124	-0.010	0.221	0.308	138.966017	41.666181	-1059.16	732.74
5	GUIDE	391525560	8.26	4949	-0.001	0.074	0.098	0.144	139.749089	41.698861	-292.52	-1231.52
6	GUIDE	391905880	8.39	4947	-0.198	-0.221	0.081	0.128	138.774143	42.573728	1894.79	2218.65
7	GUIDE	391525768	9.28	4943	-0.018	0.258	0.086	0.139	139.553312	42.045291	727.00	-340.76

## 2.4 Star Slots

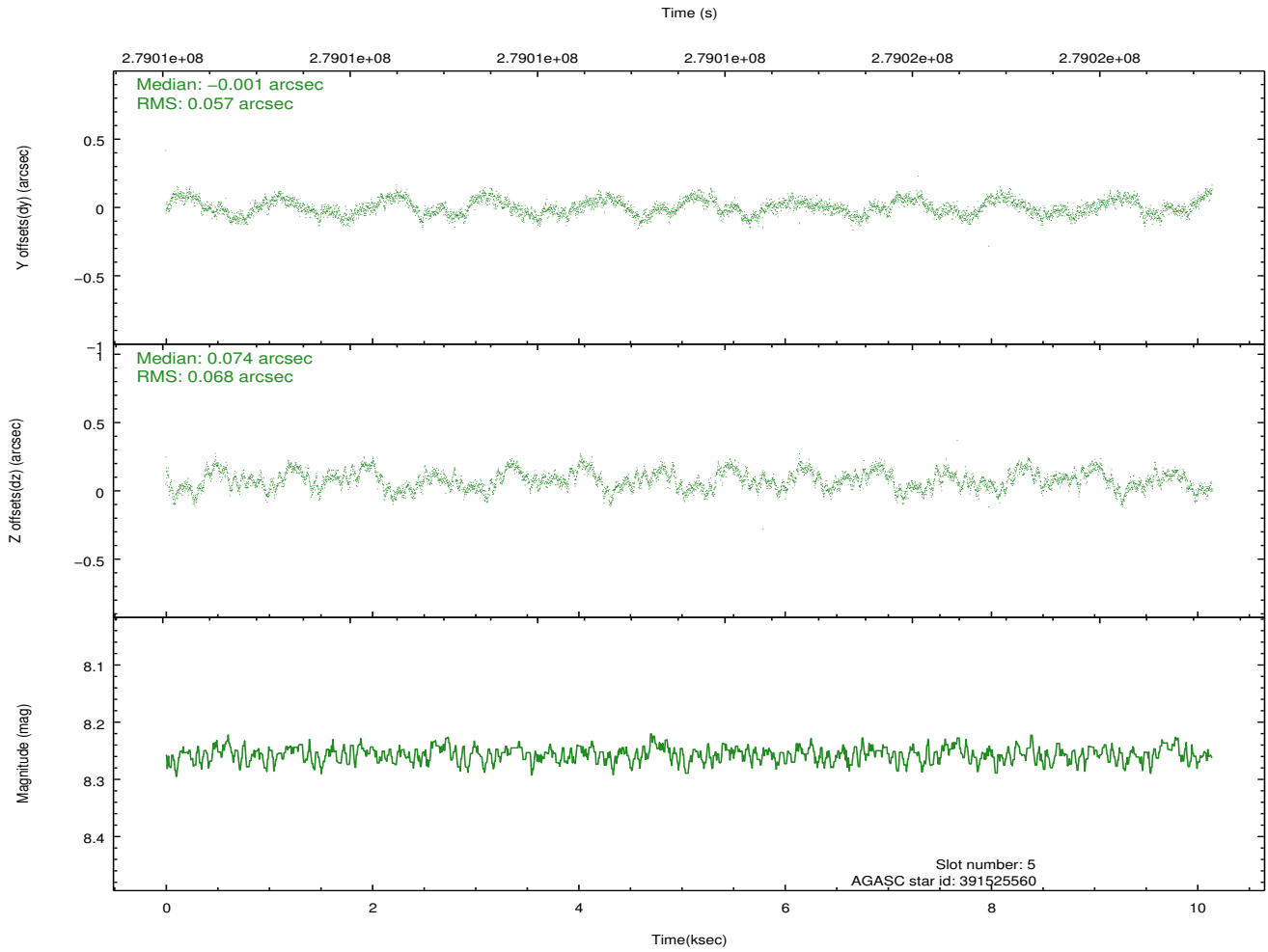
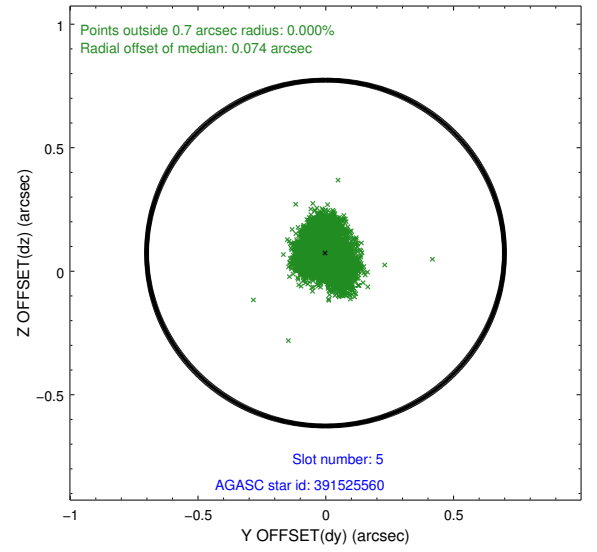
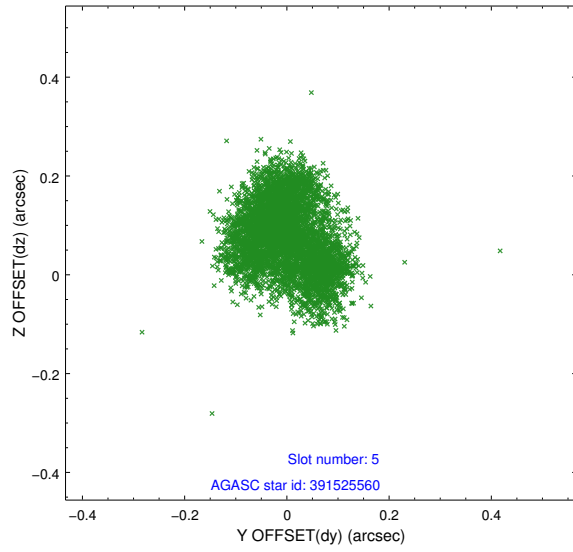
### 2.4.1 Slot 3



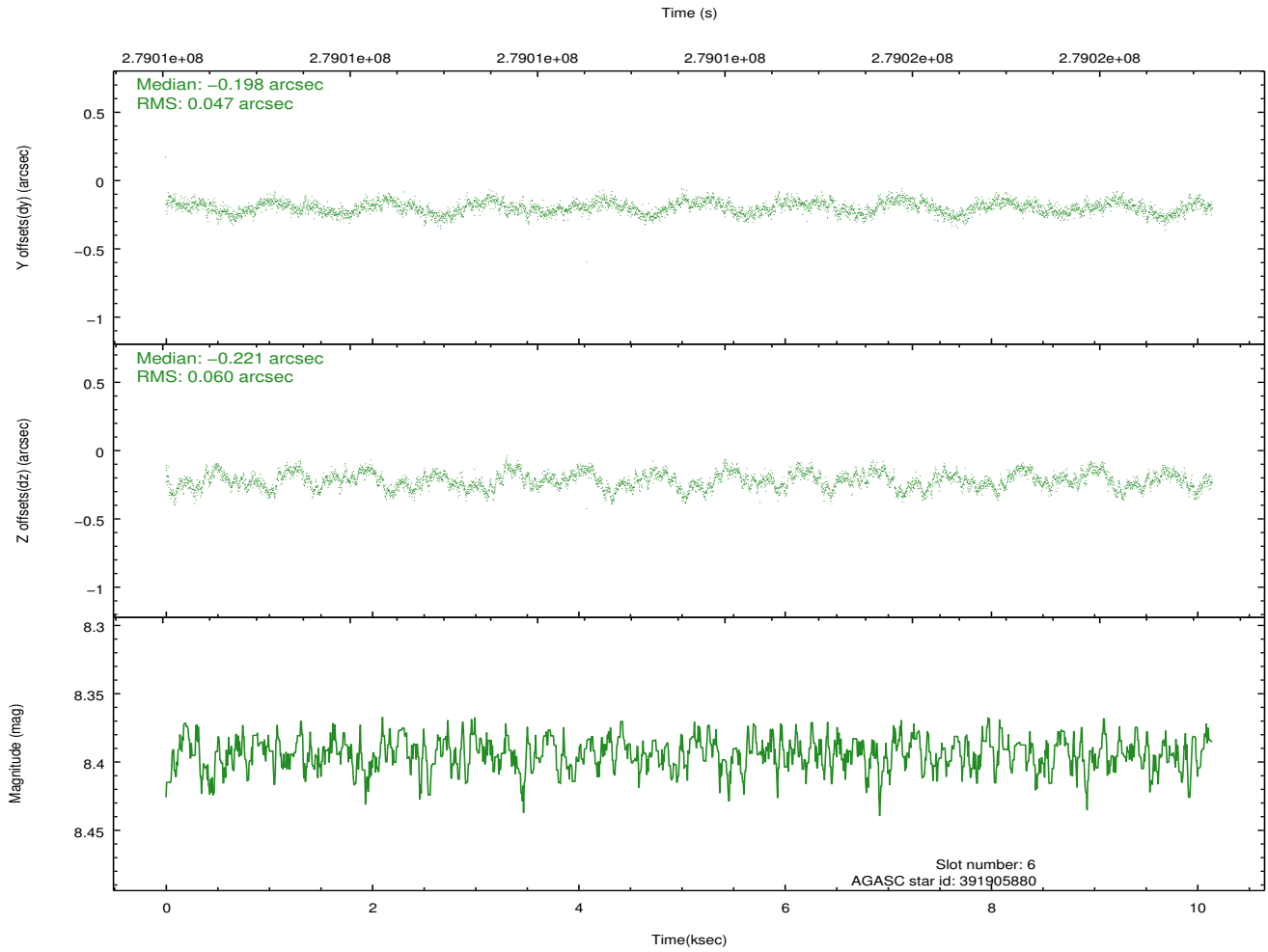
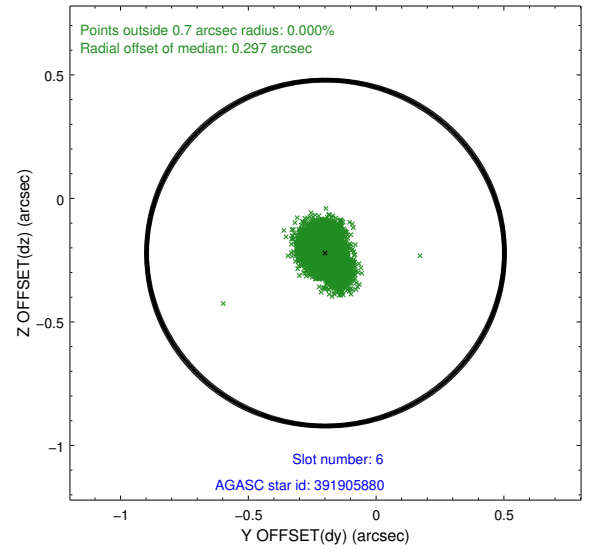
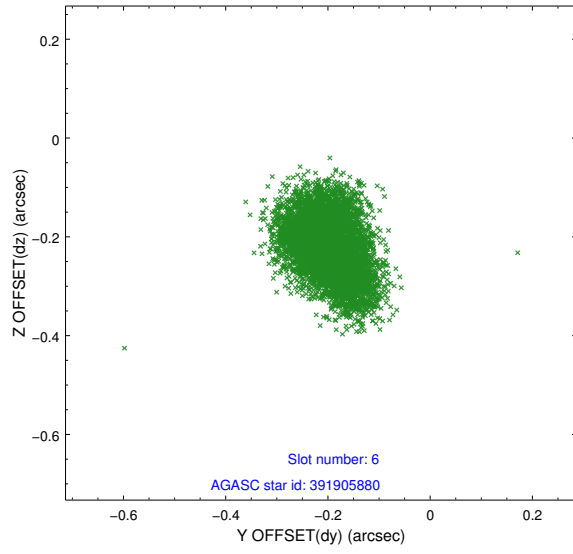
## 2.4.2 Slot 4



### 2.4.3 Slot 5

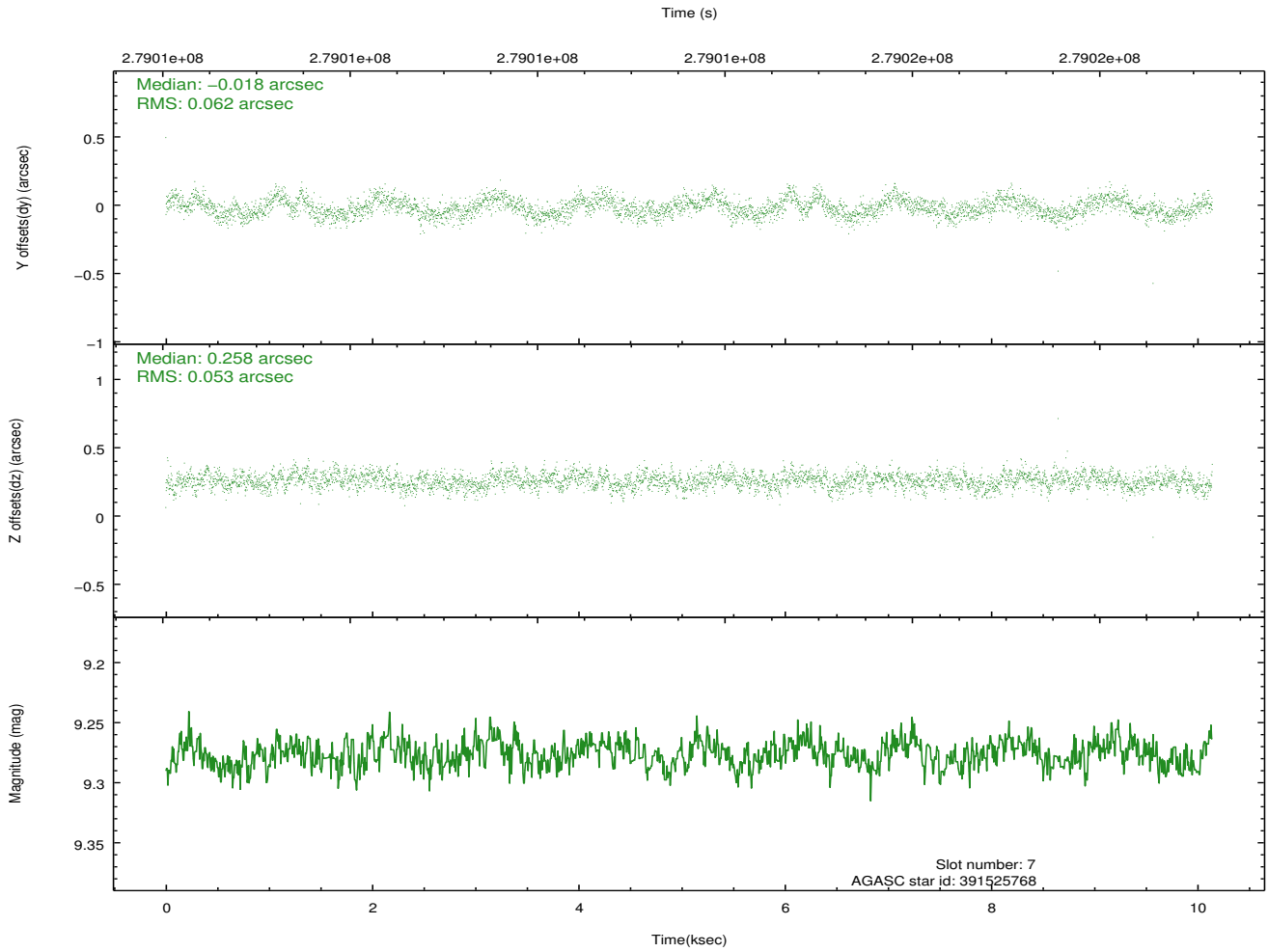
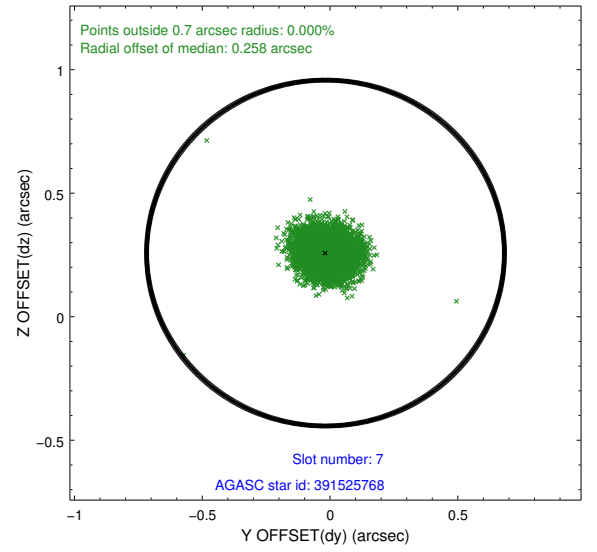
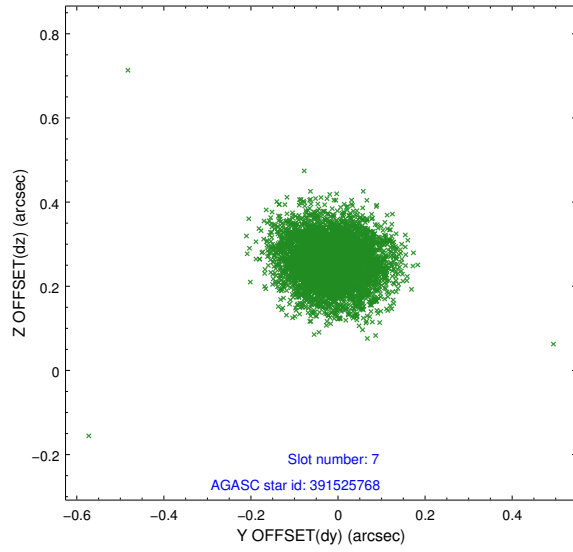


## 2.4.4 Slot 6



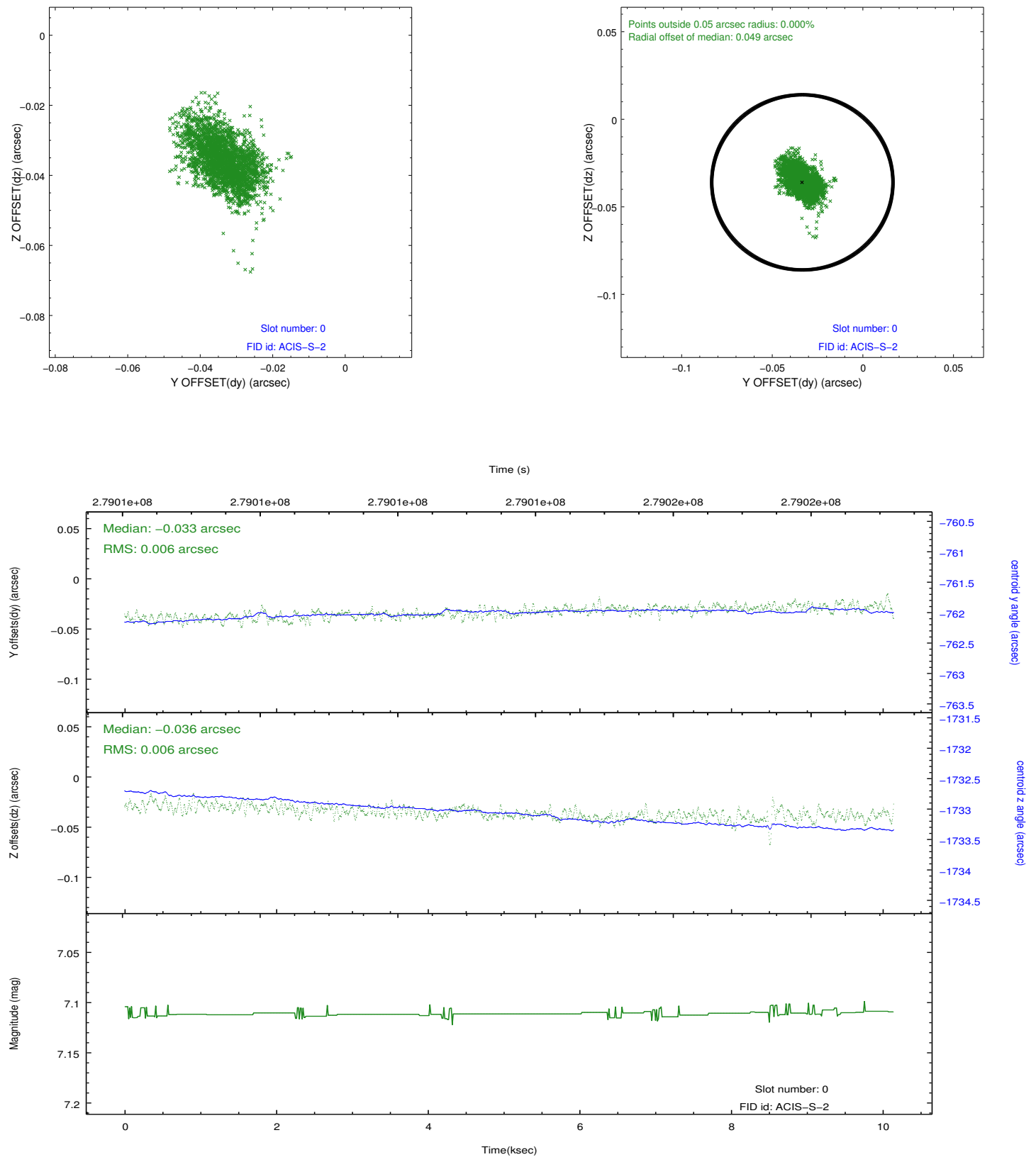


## 2.4.5 Slot 7

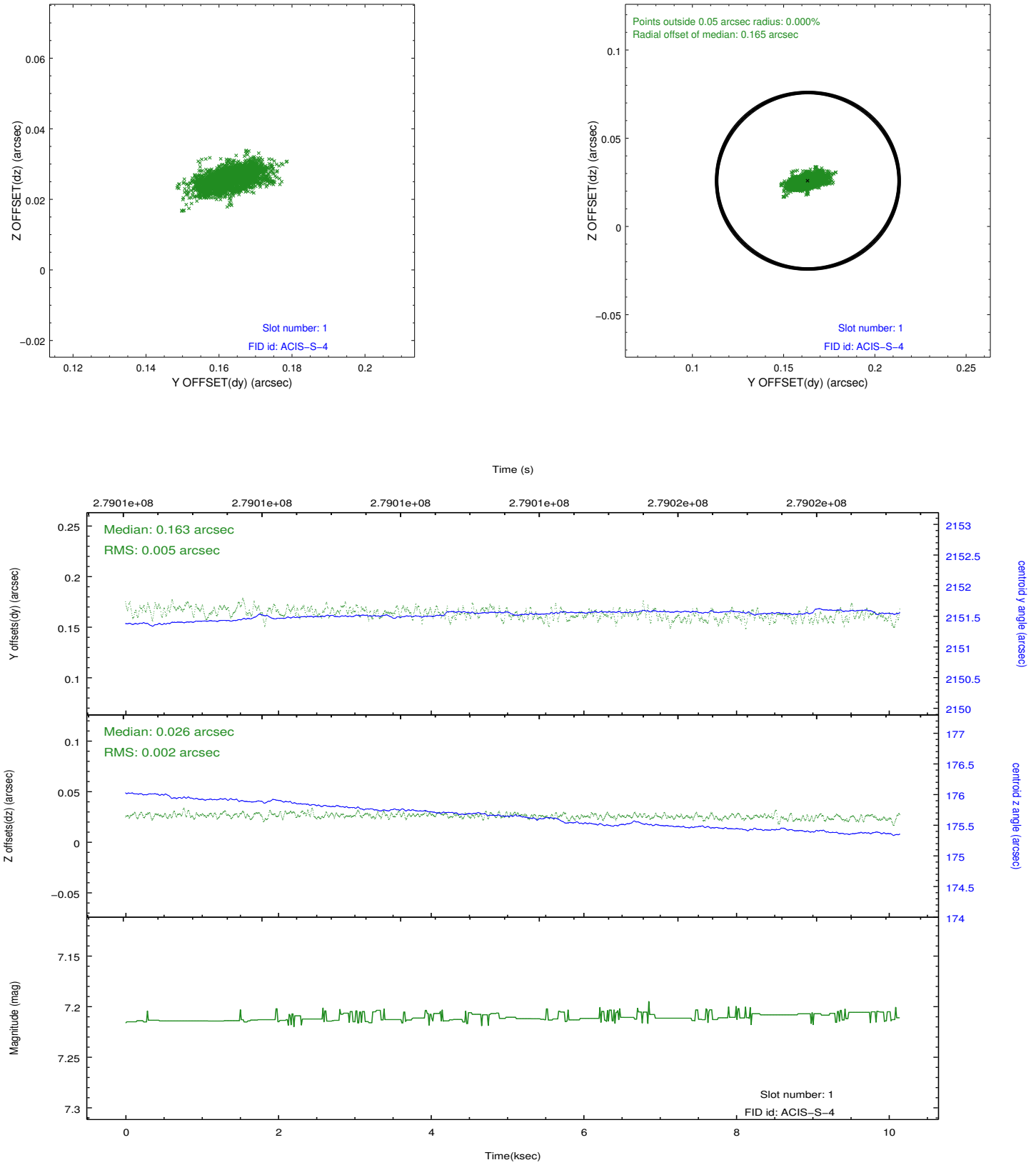


## 2.5 FID Slots

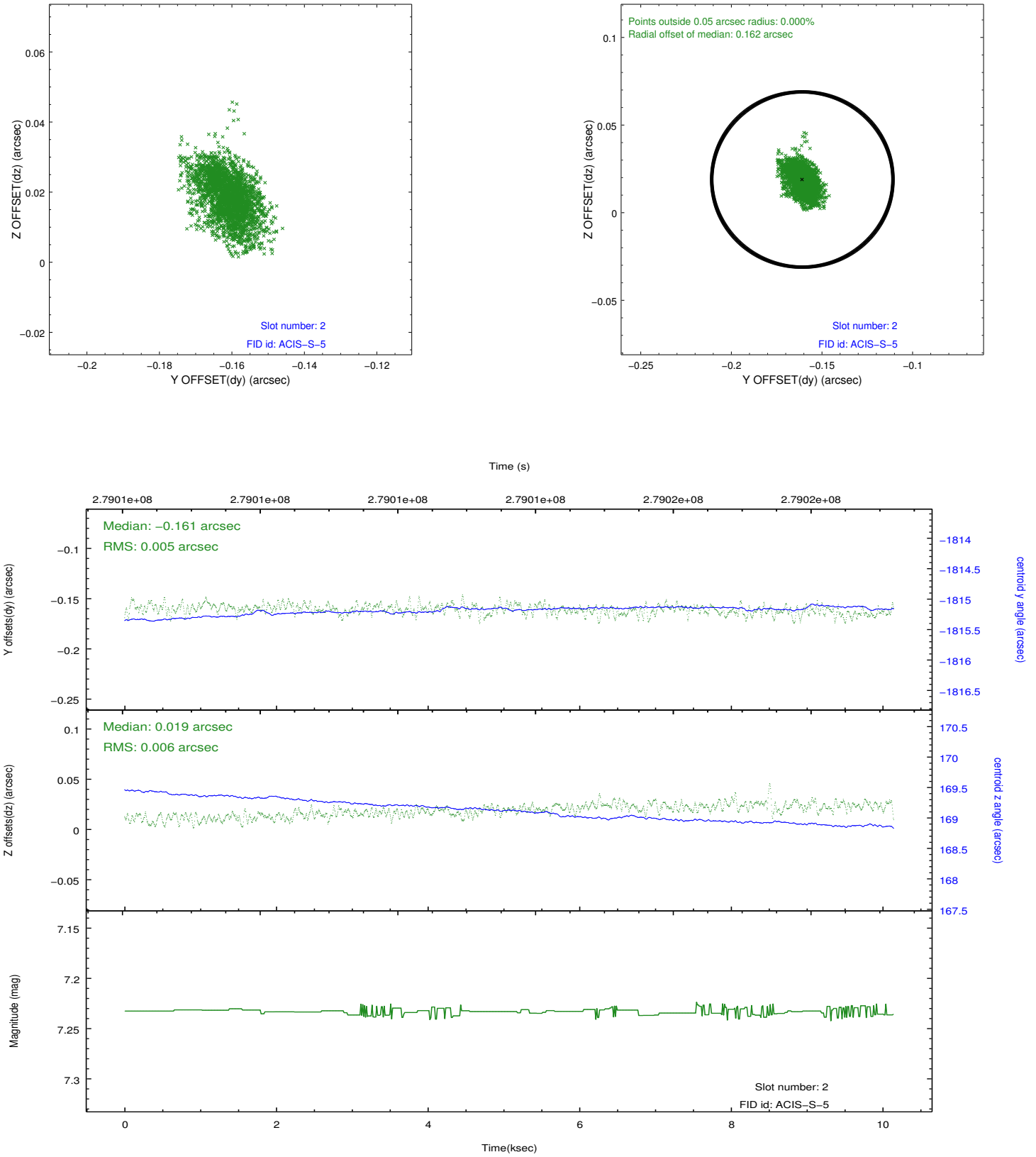
### 2.5.1 Slot 0



## 2.5.2 Slot 1



### 2.5.3 Slot 2



## A Summary

### A.1 Status

V&V Scientist	Beth Sundheim
V&V Date (YYYY-MM-DD)	2012.04.13
V&V Edition	1
V&V Disposition and Status	OK
V&V Charge Time	9.96159996

### A.2 Comments