

V&V Reference Report

L2 ASCDS Version : 8.4.3.1

Observation 7347 - L2 Version 2
Chandra X-Ray Center

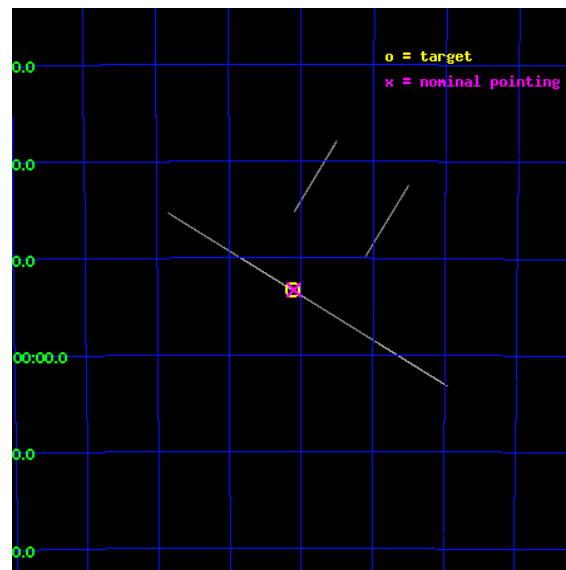
L2 Processing Date : Apr 6 2012

Contents

1	Front	2
2	OBI	3
2.1	OBI	3
2.1.1	Images	3
2.1.2	Bias	3
2.1.3	Parameters	4
2.1.4	Events	4
2.2	Compared Parameters	5
2.3	Aspect	6
2.4	Star Slots	9
2.4.1	Slot 3	9
2.4.2	Slot 4	10
2.4.3	Slot 5	11
2.4.4	Slot 6	12
2.4.5	Slot 7	13
2.5	FID Slots	14
2.5.1	Slot 0	14
2.5.2	Slot 1	15
2.5.3	Slot 2	16
A	Summary	17
A.1	Status	17
A.2	Comments	17

1 Front

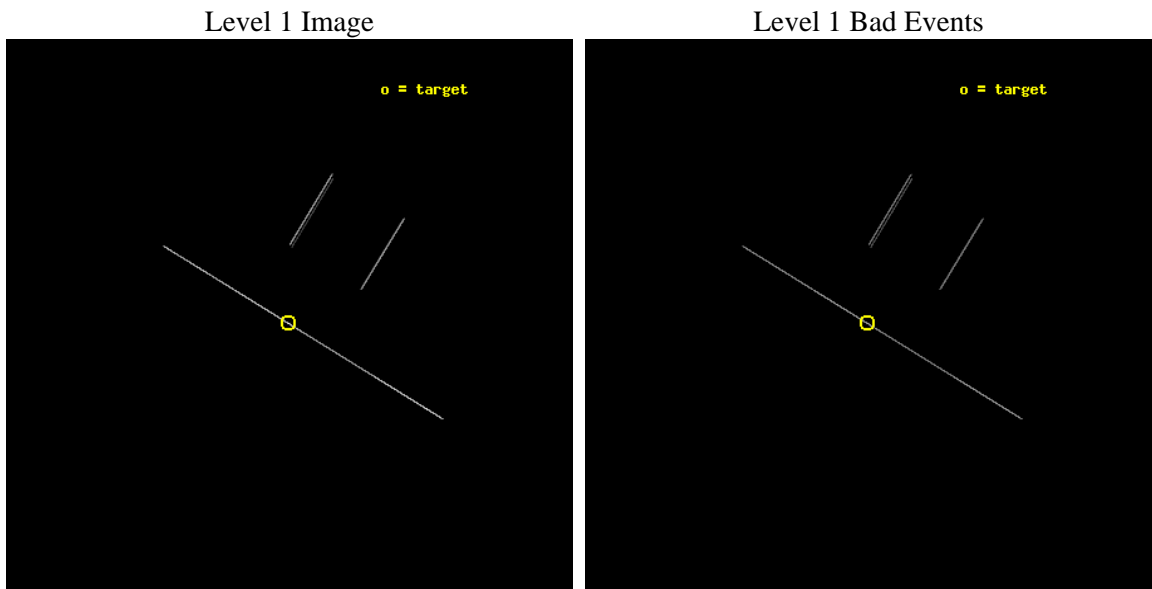
seq_num	500695	Sequence number
obs_id	7347	Observation id
title	THE X-RAY SPECTRAL AND OPTICAL/IR FLUX VARIABILITY IN MAGNETARS	Pr
observer	Professor Victoria Kaspi	Principal investigator
object	1E 1048.1-5937	Source name
ra_targ	162.529583	Observer's specified target RA [deg]
dec_targ	-59.889278	Observer's specified target Dec [deg]
ra_nom	162.52572600583	Nominal RA [deg]
dec_nom	-59.888523393034	Nominal Dec [deg]
roll_nom	211.44149446495	Nominal Roll [deg]
revision	2	Processing version of data
ontime	22176.25	Sum of GTIs [s]
livetime	22089.624023438	Livetime [s]
ontime2	22176.25	Sum of GTIs [s]
ontime3	22176.25	Sum of GTIs [s]
ontime5	22176.25	Sum of GTIs [s]
ontime6	22176.25	Sum of GTIs [s]
ontime7	22176.25	Sum of GTIs [s]
ontime8	22176.25	Sum of GTIs [s]
l2events	385368	Number of level 2 events



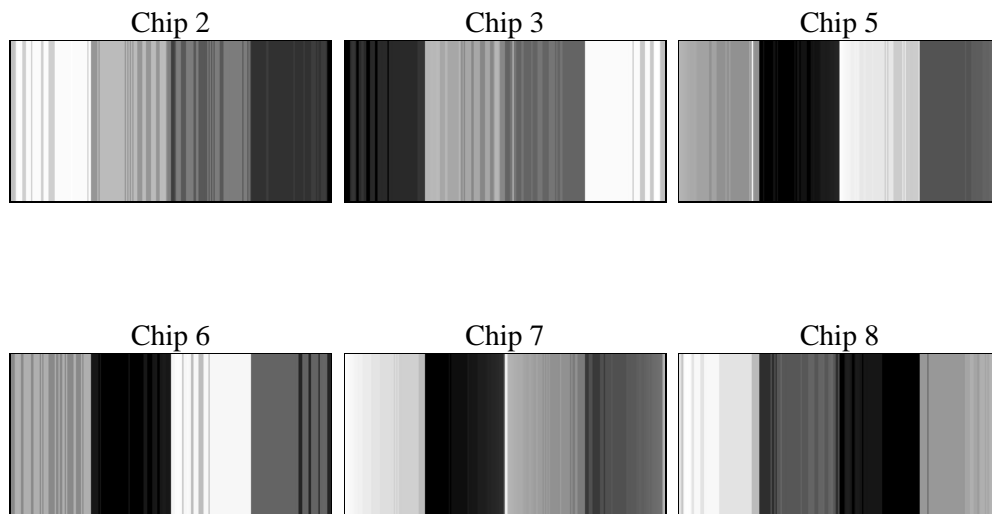
2 OBI

2.1 OBI

2.1.1 Images



2.1.2 Bias



2.1.3 Parameters

obi_num	1	Obi number	sched_exp_time	22000.000000	[s] Scheduled observation exposure time
ascdsver	8.4.3.1	Processing system revision	ontime	22176.25	Sum of GTIs [s]
caldsver	4.4.9	 	ontime2	22176.25	Sum of GTIs [s]
date	2012-04-06T03:28:08	Date and time of file creation	ontime3	22176.25	Sum of GTIs [s]
revision	2	Processing version of data	ontime5	22176.25	Sum of GTIs [s]
			ontime6	22176.25	Sum of GTIs [s]
			ontime7	22176.25	Sum of GTIs [s]
			ontime8	22176.25	Sum of GTIs [s]
			l1events	569103	Number of level 1 events

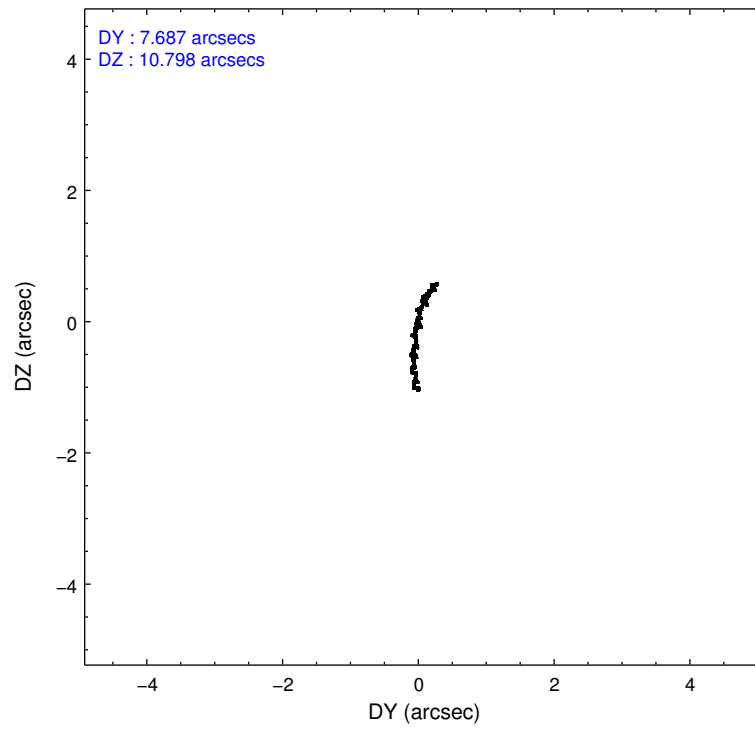
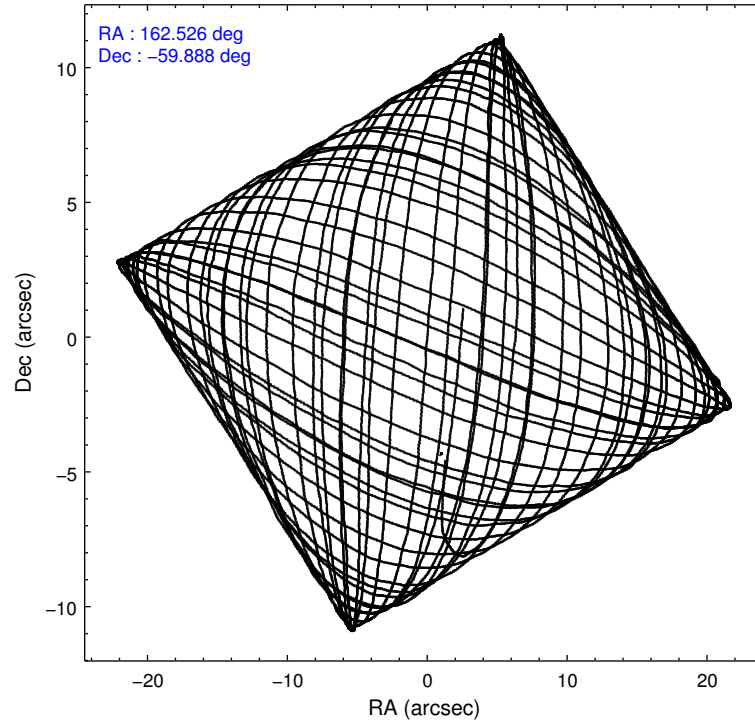
2.1.4 Events

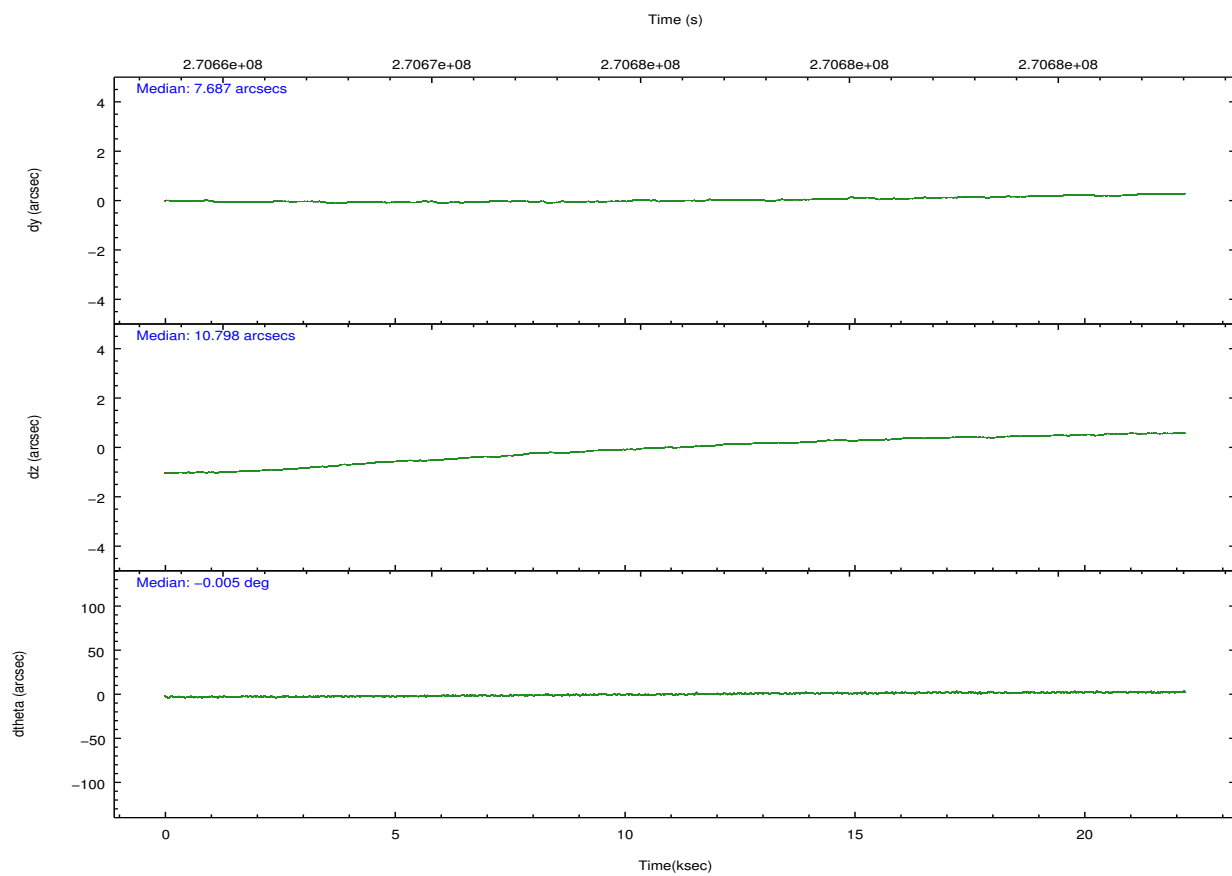
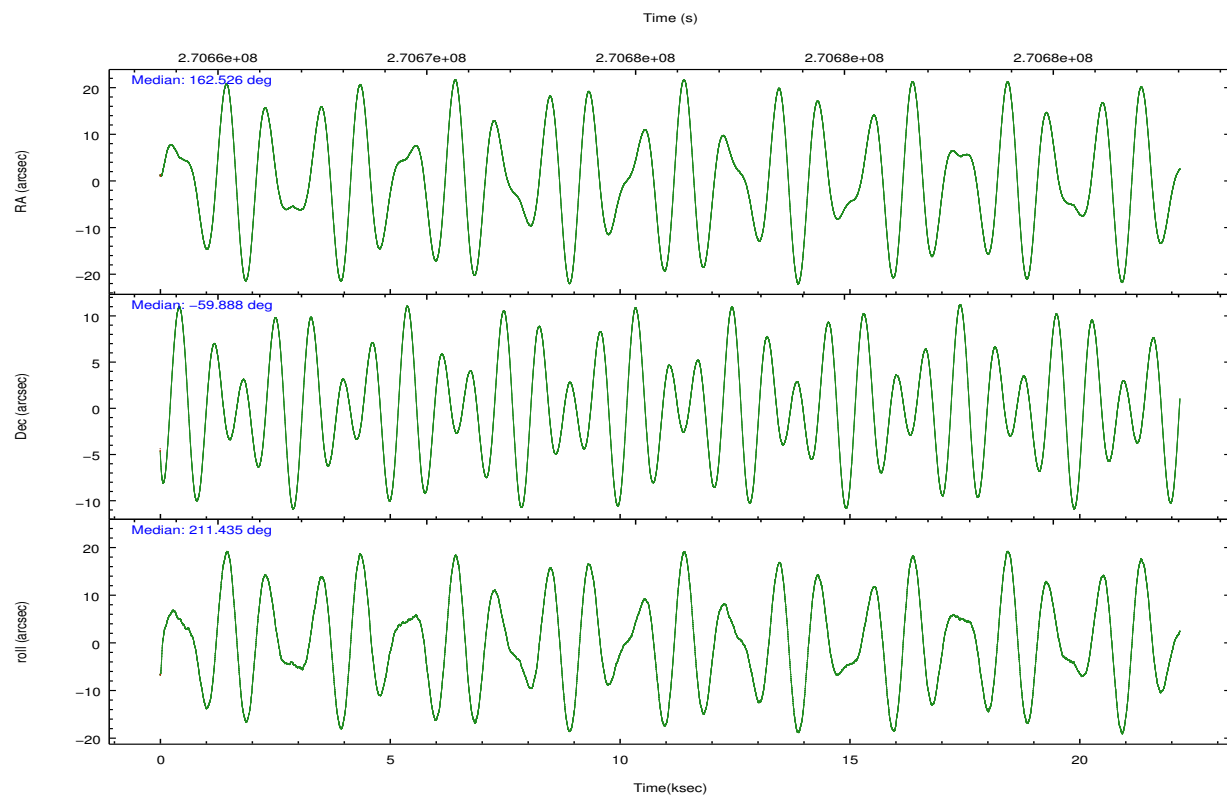
	ccd 2	ccd 3	ccd 5	ccd 6	ccd 7	ccd 8		ccd 2	ccd 3	ccd 5	ccd 6	ccd 7	ccd 8
level 1 events	42090	46013	182770	46730	156537	94963	grade 0 events	5315	5437	20421	4691	14106	16619
rejected events	9058	10313	28029	10804	26794	16048		12%	11%	11%	10%	9%	17%
rejected %	21%	22%	15%	23%	17%	16%	grade 1 events	172	185	343	190	379	358
								0%	0%	0%	0%	0%	0%
							grade 2 events	13148	13978	50592	14306	34610	25482
								31%	30%	27%	30%	22%	26%
							grade 3 events	4458	5200	4115	4779	9609	9385
								10%	11%	2%	10%	6%	9%
							grade 4 events	4512	4488	4017	4636	9543	9220
								10%	9%	2%	9%	6%	9%
							grade 5 events	7549	8678	19224	9191	21835	12700
								17%	18%	10%	19%	13%	13%
							grade 6 events	6936	8047	84058	8937	66455	21199
								16%	17%	45%	19%	42%	22%
							grade 7 events	0	0	0	0	0	0
								0%	0%	0%	0%	0%	0%

2.2 Compared Parameters

Parameter	Planned	Actual	Parameter	Planned	Actual
Instrument	ACIS	ACIS	Obspar format version number	7	7
Detector	ACIS-235678	ACIS-235678	Obspar file type	PREDICTED	ACTUAL
Grating	NONE	NONE	Obspar update status	NONE	UPDATED
Data mode	CC33_FAINT	CC33_FAINT	Number of optional ACIS chips dropped	0	0
Observation mode	POINTING	POINTING	On-chip summing requested	N	N
[deg] Pointing RA	162.551004	162.5257260058279	Subarray requested	NONE	NONE
[deg] Pointing Dec	-59.864412	-59.88852339303436	Alternating exposures requested	N	N
[deg] Pointing Roll	211.306737	211.4414944649516	[s] Primary exposure time	0.000000	0
[mm] SIM focus pos	-0.684267	-0.6828225247311905			
[mm] SIM defocus	0	0.001444936568705701			
[mm] SIM translation stage pos	-190.132523	-190.1425803651734			
[mm] SIM translation stage offset	0	0.01005778216563158			
[s] Observation start time (MET)	270664913.184000	270663830.9267			
Observation start date	2006-07-30T16:40:48	2006-07-30T16:23:50			
[s] Observation end time (MET)	270686913.184000	270687906.64033			
Observation end date	2006-07-30T22:47:28	2006-07-30T23:05:06			
Read mode	CONTINUOUS	CONTINUOUS			

2.3 Aspect



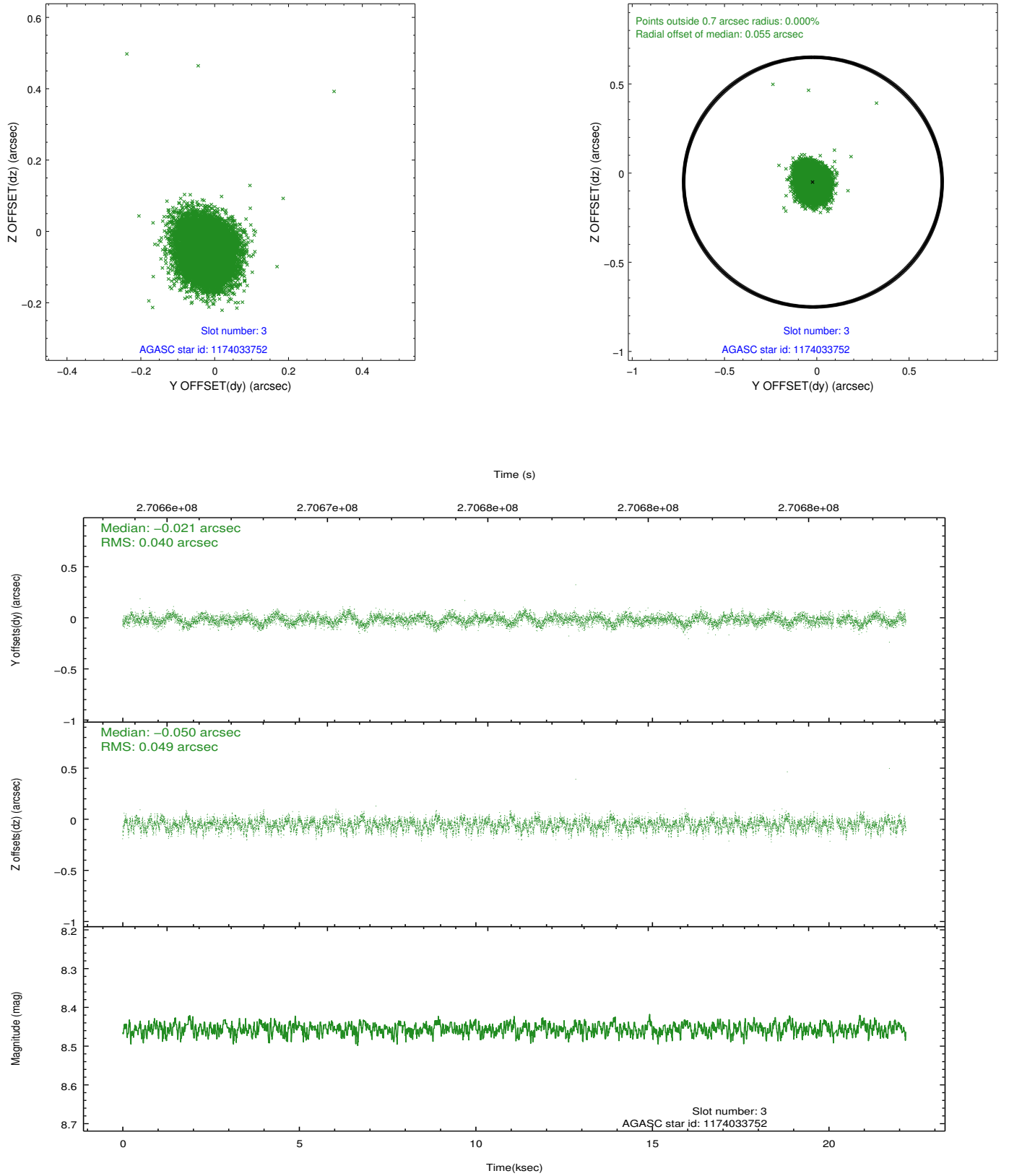


Slot Statistics

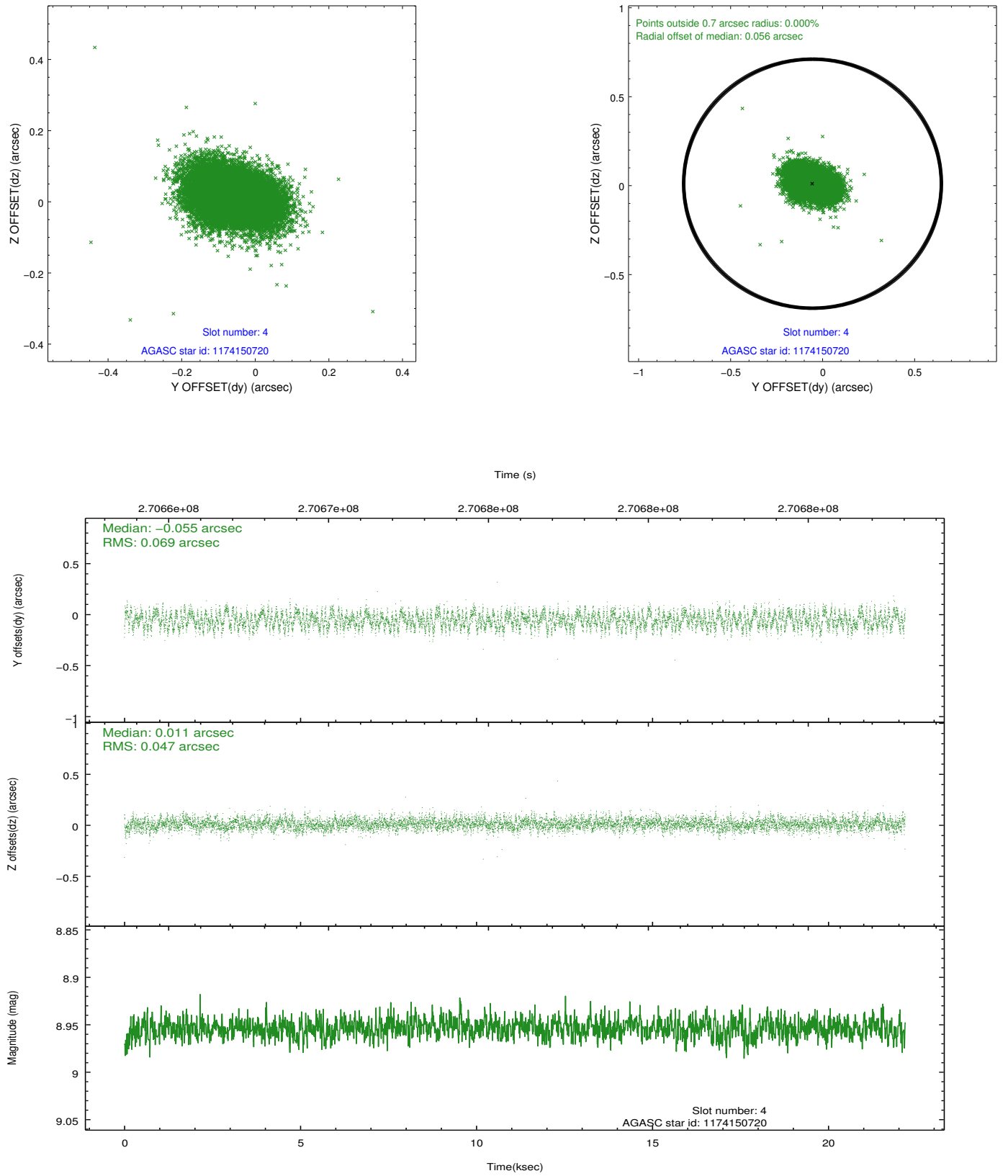
slot	status	id	mag	n_pts	med_dy	med_dz	dr1	dr2	ra	dec	mean_y	mean_z
0	FID	ACIS-S-1	7.19	5411	0.089	-0.055	0.019	0.026	0.000000	0.000000	935.62	-1727.60
1	FID	ACIS-S-2	7.11	5411	-0.028	0.015	0.021	0.037	0.000000	0.000000	-760.31	-1732.24
2	FID	ACIS-S-5	7.23	5410	-0.084	0.050	0.016	0.025	0.000000	0.000000	-1813.77	169.91
3	GUIDE	1174033752	8.46	10776	-0.021	-0.050	0.067	0.106	162.418977	-60.164599	763.78	800.81
4	GUIDE	1174150720	8.95	10821	-0.055	0.011	0.089	0.142	164.104813	-60.030464	-2059.63	1990.65
5	GUIDE	1130632200	7.56	10819	-0.001	-0.039	0.069	0.130	161.433843	-59.407820	903.88	-2452.81
6	GUIDE	1130642000	7.96	10821	0.057	0.075	0.062	0.100	162.836255	-59.743891	-666.60	-100.97
7	GUIDE	1174020728	8.14	10749	0.008	0.006	0.051	0.082	162.364714	-60.294672	1089.08	1151.36

2.4 Star Slots

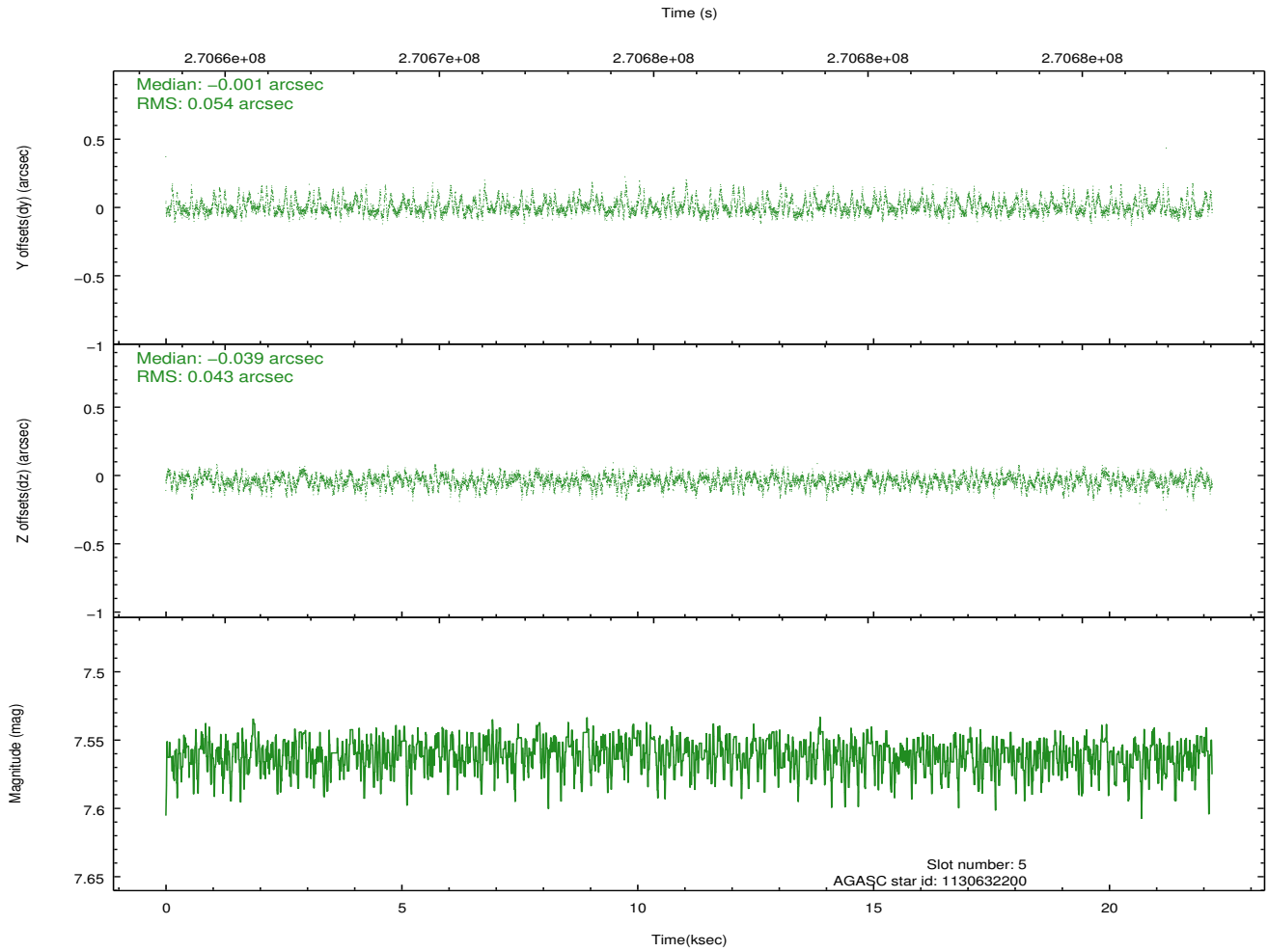
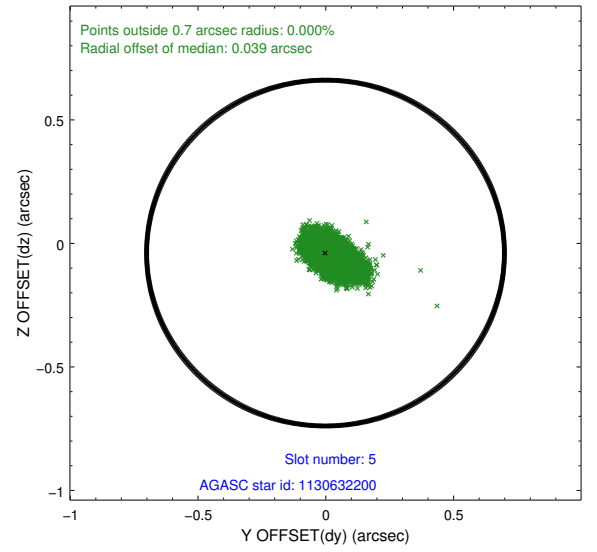
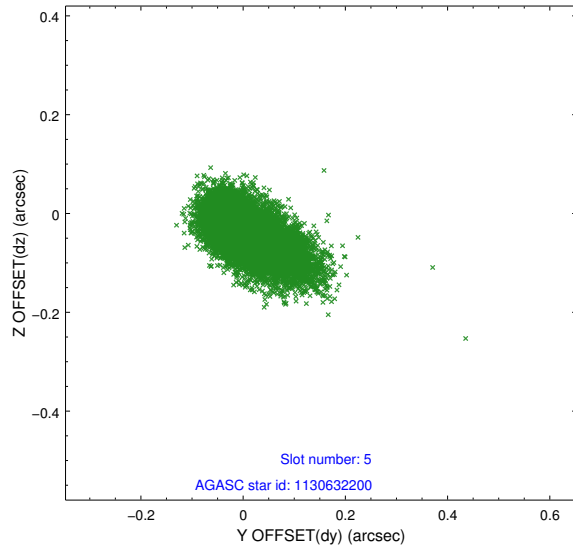
2.4.1 Slot 3



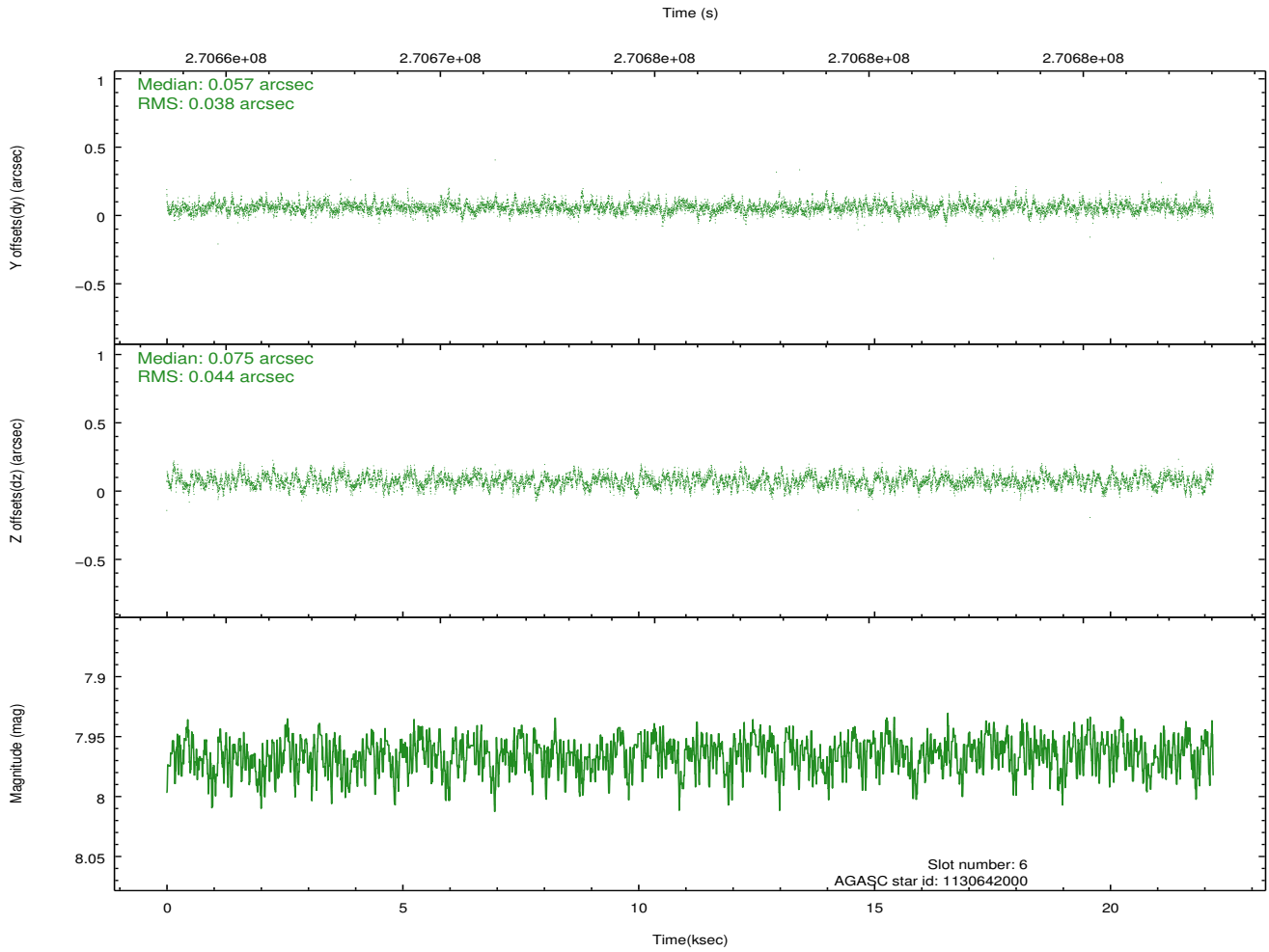
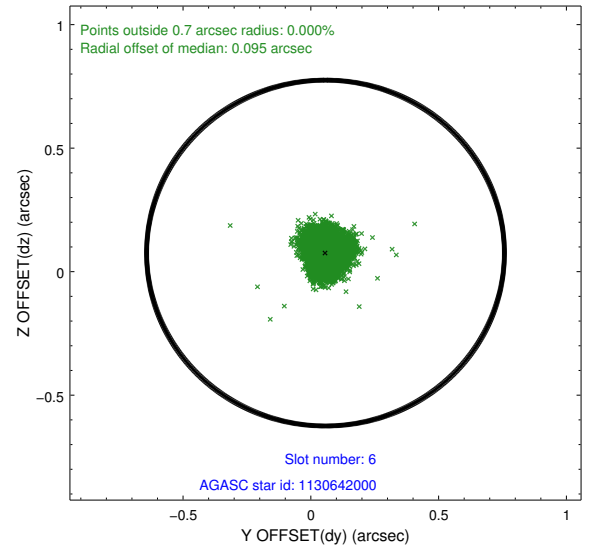
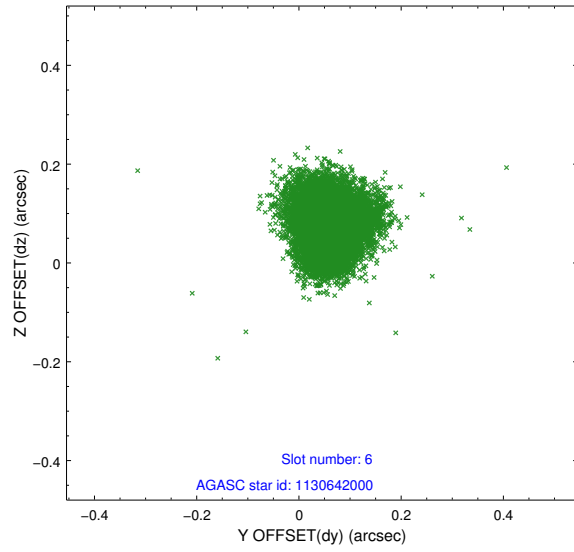
2.4.2 Slot 4



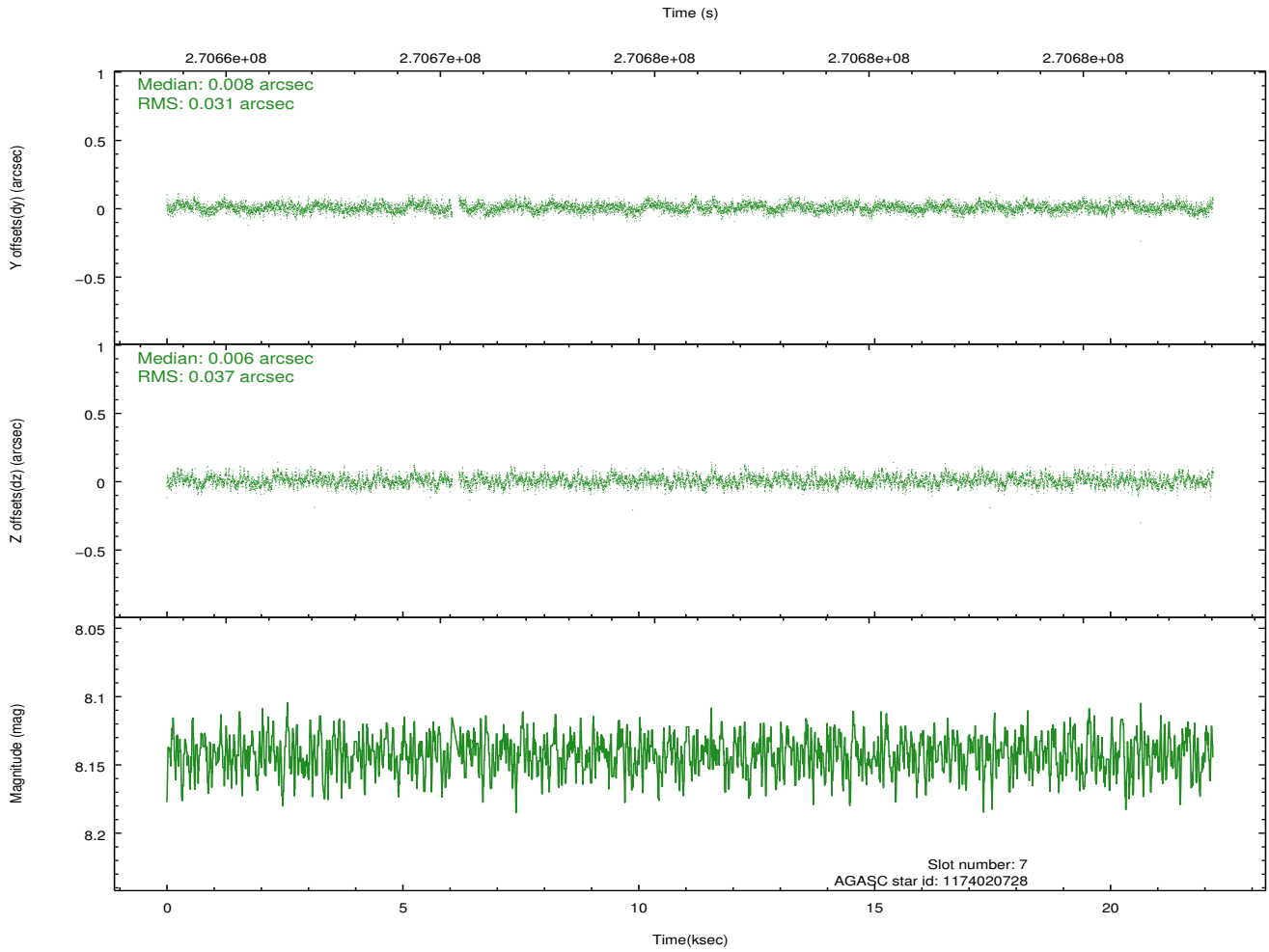
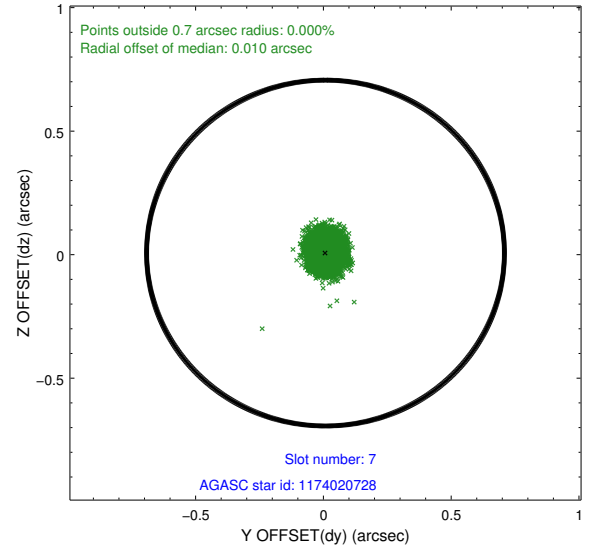
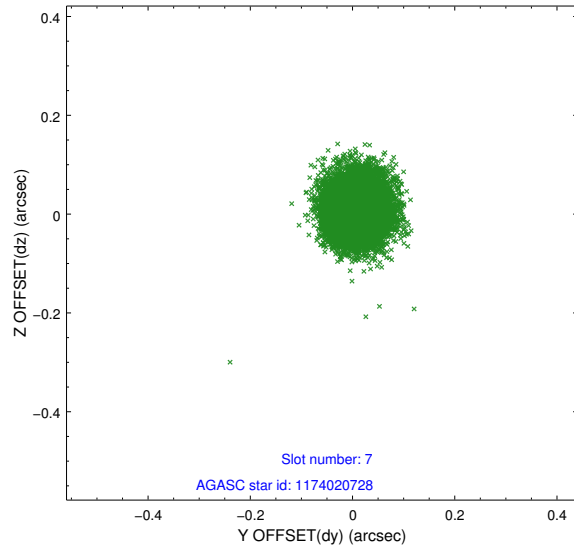
2.4.3 Slot 5



2.4.4 Slot 6

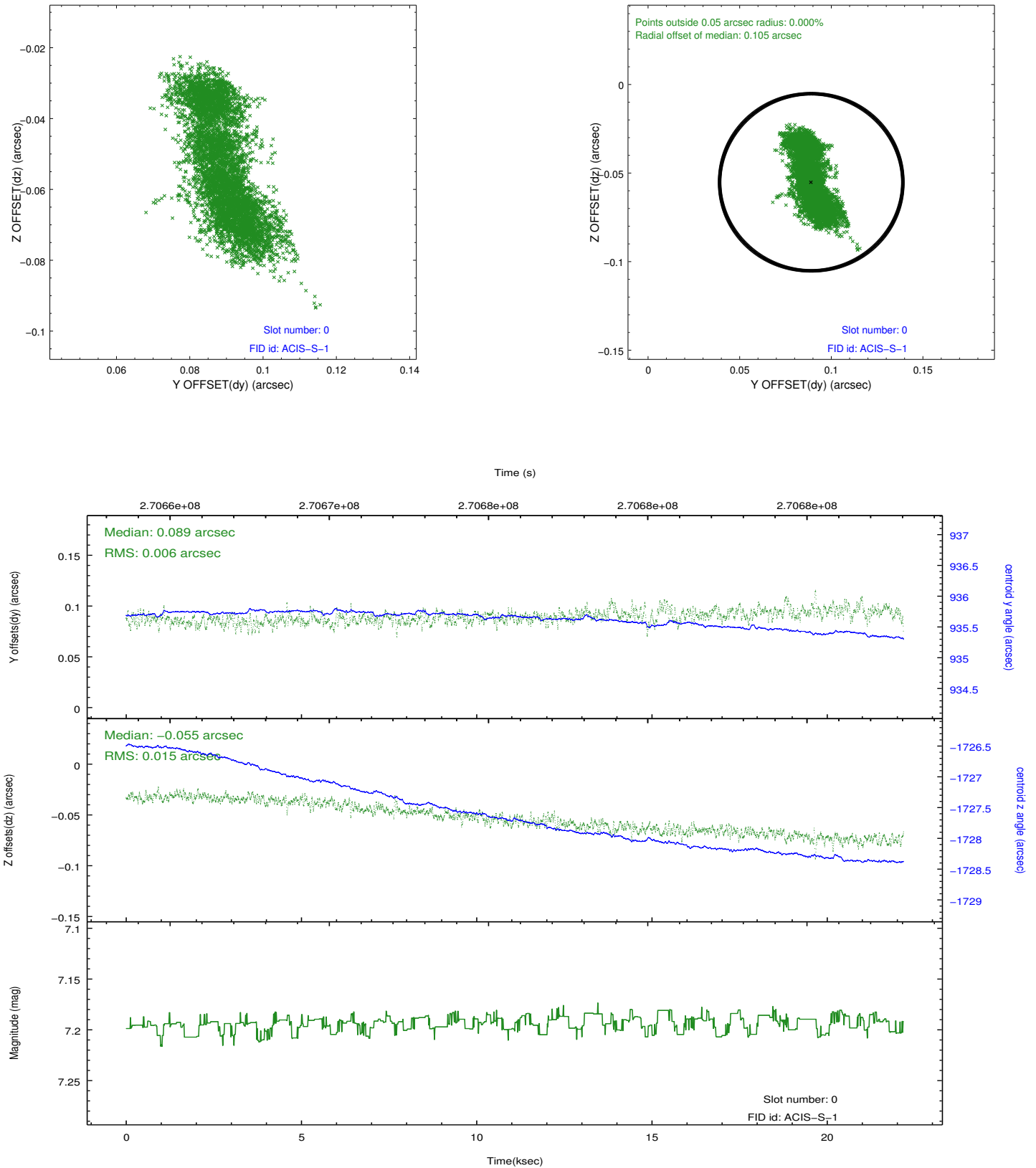


2.4.5 Slot 7

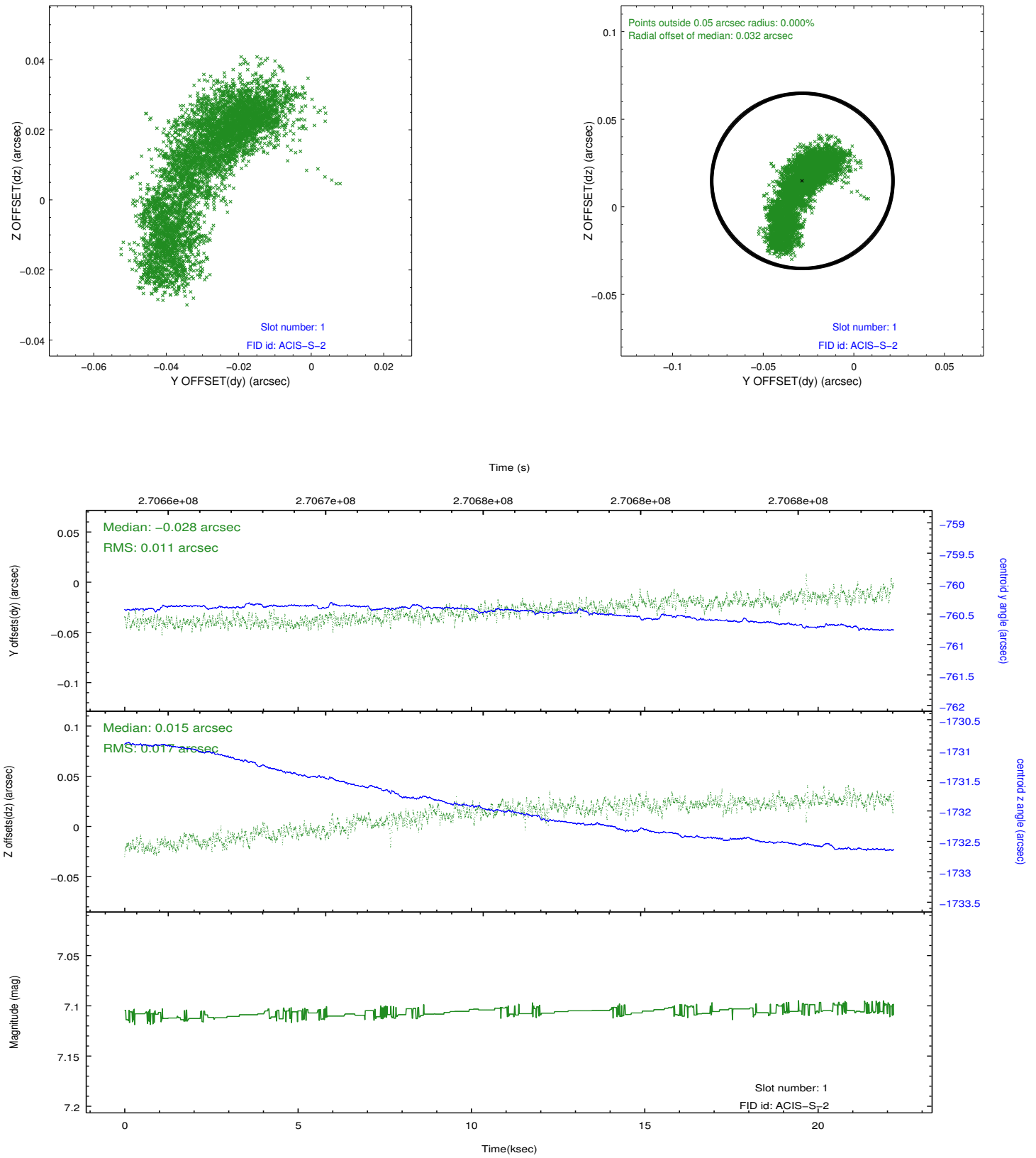


2.5 FID Slots

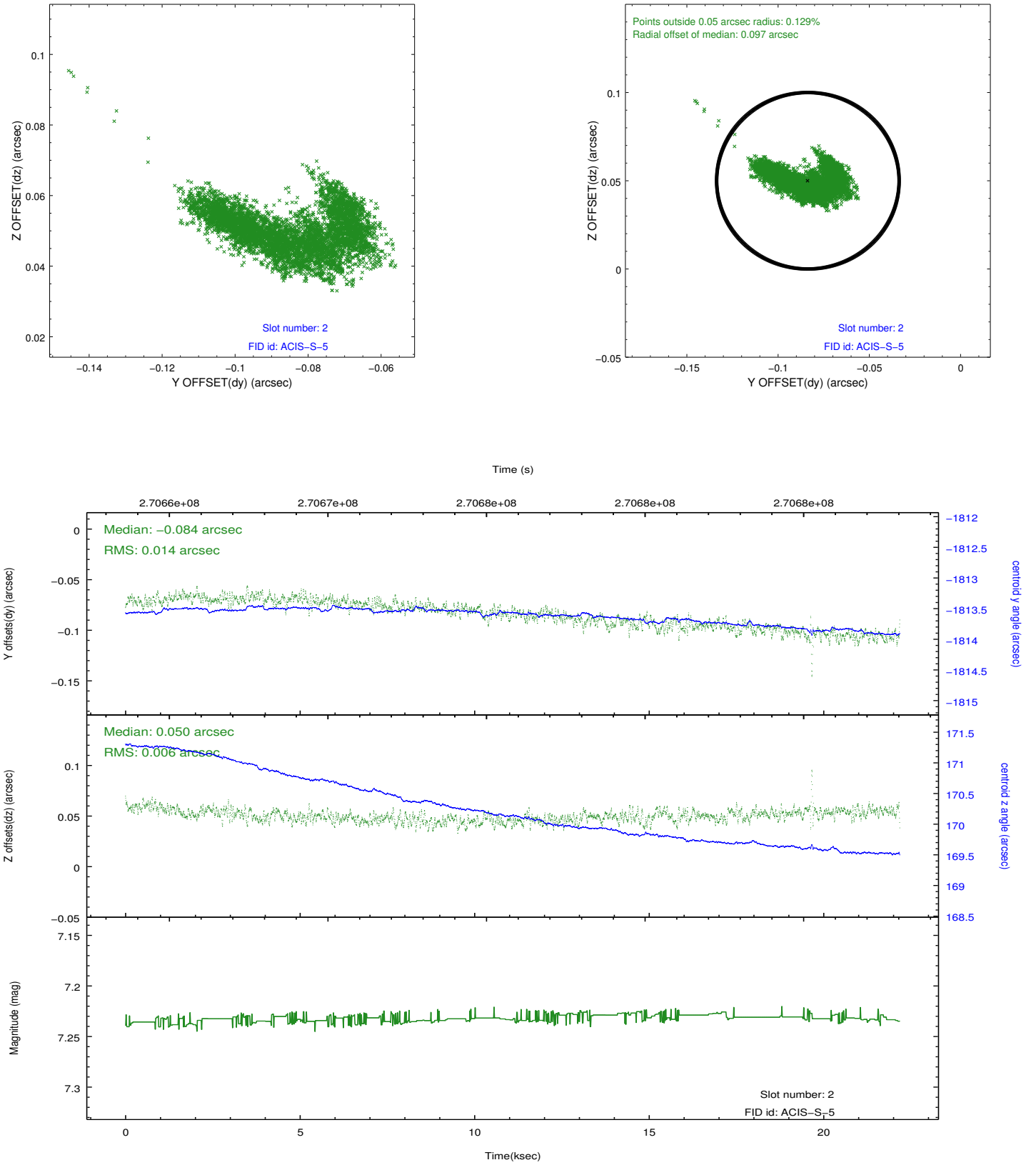
2.5.1 Slot 0



2.5.2 Slot 1



2.5.3 Slot 2



A Summary

A.1 Status

V&V Scientist	Joy Nichols
V&V Date (YYYY-MM-DD)	2012.04.06
V&V Edition	1
V&V Disposition and Status	OK
V&V Charge Time	22.17625

A.2 Comments