

V&V Reference Report

L2 ASCDS Version : 8.4.3

Observation 7257 - L2 Version 2
Chandra X-Ray Center

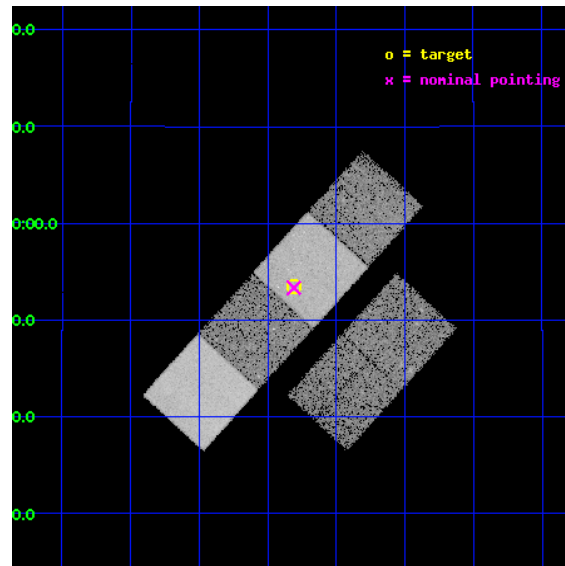
L2 Processing Date : Mar 21 2012

Contents

1	Front	2
2	OBI	3
2.1	OBI	3
2.1.1	Images	3
2.1.2	Bias	3
2.1.3	Parameters	4
2.1.4	Events	4
2.2	Compared Parameters	5
2.3	Aspect	6
2.4	Star Slots	9
2.4.1	Slot 3	9
2.4.2	Slot 4	10
2.4.3	Slot 5	11
2.4.4	Slot 6	12
2.4.5	Slot 7	13
2.5	FID Slots	14
2.5.1	Slot 0	14
2.5.2	Slot 1	15
2.5.3	Slot 2	16
A	Summary	17
A.1	Status	17
A.2	Comments	17

1 Front

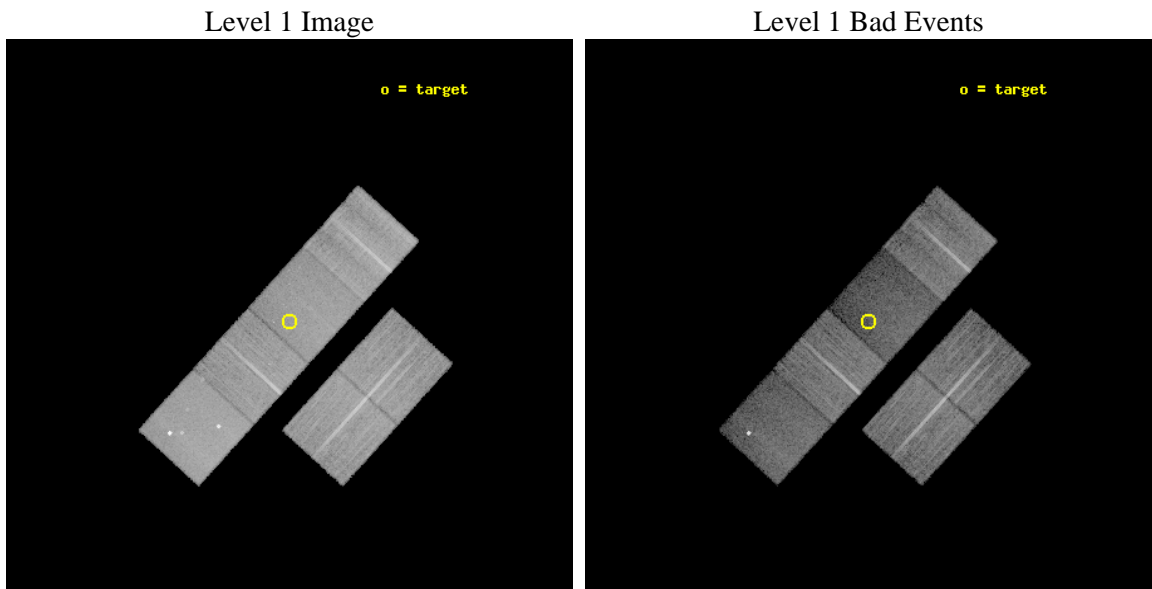
seq_num	500687	Sequence number
obs_id	7257	Observation id
title	A Day in the Life of a Short Gamma-Ray Burst	Proposal title
observer	Prof. David Burrows	Principal investigator
object	GRB 051221	Source name
dtcycle	0	
cycle	P	events from which exps? Prim/Second/Both
ra_targ	328.702917	Observer's specified target RA [deg]
dec_targ	16.891167	Observer's specified target Dec [deg]
ra_nom	328.7025180937	Nominal RA [deg]
dec_nom	16.889108136962	Nominal Dec [deg]
roll_nom	312.24952893889	Nominal Roll [deg]
revision	2	Processing version of data
ontime	18163.199932337	Sum of GTIs [s]
livetime	17933.206558228	Livetime [s]
ontime2	18163.199932337	Sum of GTIs [s]
ontime3	18163.199932337	Sum of GTIs [s]
ontime5	18163.199932337	Sum of GTIs [s]
ontime6	18163.199932337	Sum of GTIs [s]
ontime7	18163.199932337	Sum of GTIs [s]
ontime8	18163.199932337	Sum of GTIs [s]
l2events	159975	Number of level 2 events



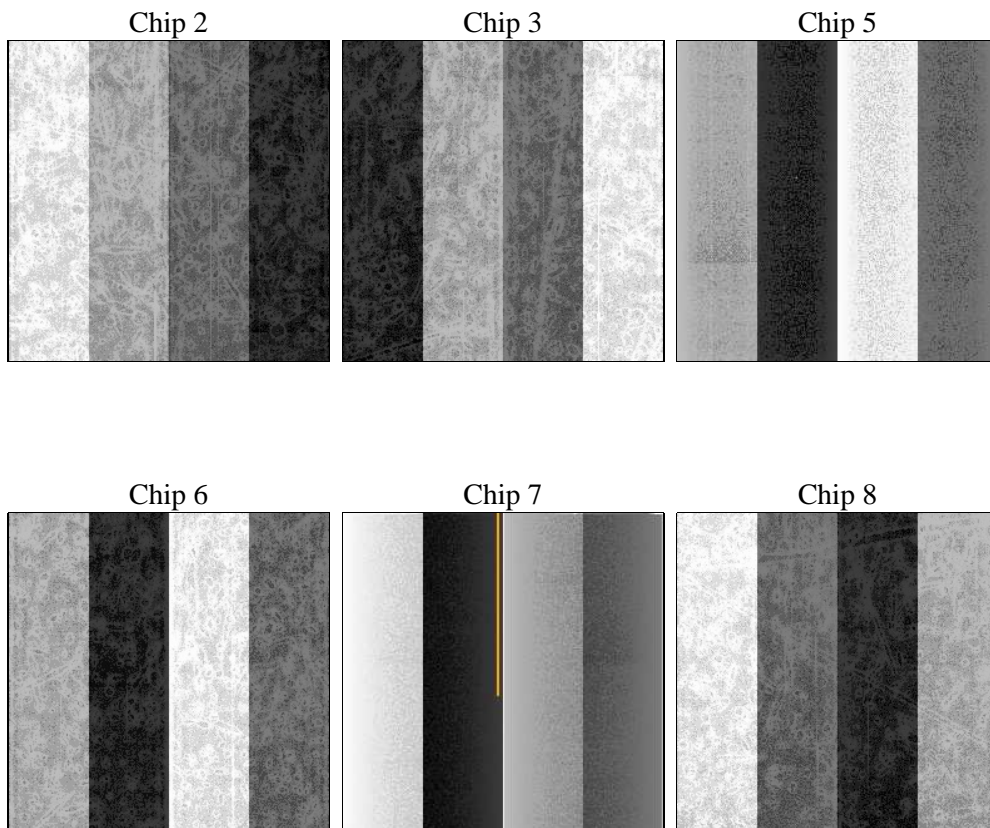
2 OBI

2.1 OBI

2.1.1 Images



2.1.2 Bias



2.1.3 Parameters

obi_num	0	Obi number	sched_exp_time	18000.000000	[s] Scheduled observation exposure time
ascdsver	8.4.3	Processing system revision	ontime	18163.199932337	Sum of GTIs [s]
caldsver	4.4.8	 	ontime2	18163.199932337	Sum of GTIs [s]
date	2012-03-22T00:55:06	Date and time of file creation	ontime3	18163.199932337	Sum of GTIs [s]
revision	2	Processing version of data	ontime5	18163.199932337	Sum of GTIs [s]
			ontime6	18163.199932337	Sum of GTIs [s]
			ontime7	18163.199932337	Sum of GTIs [s]
			ontime8	18163.199932337	Sum of GTIs [s]
			l1events	766934	Number of level 1 events

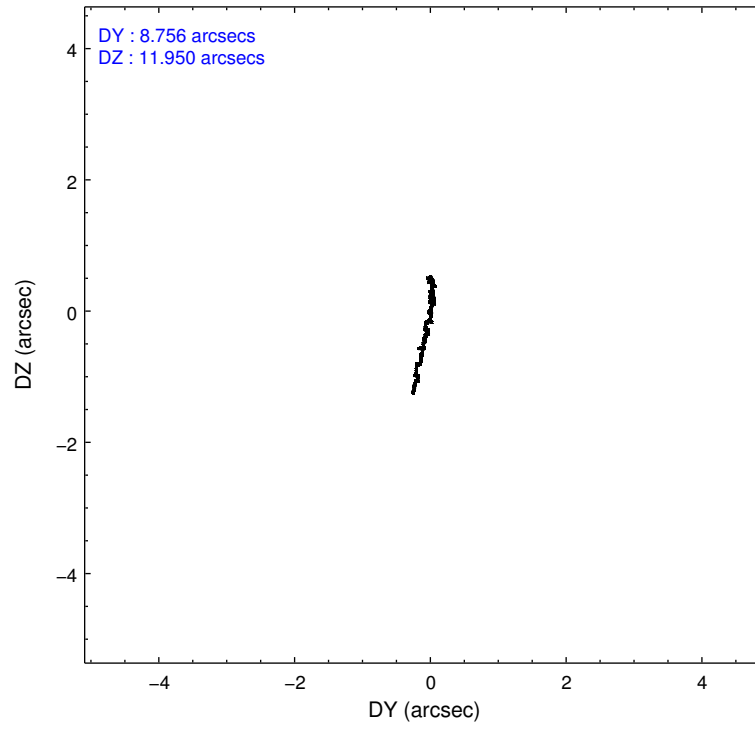
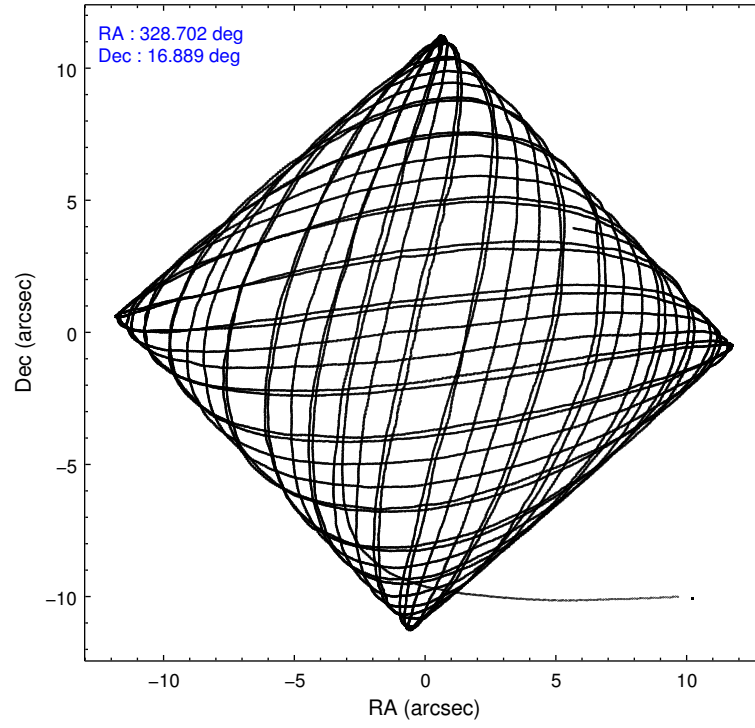
2.1.4 Events

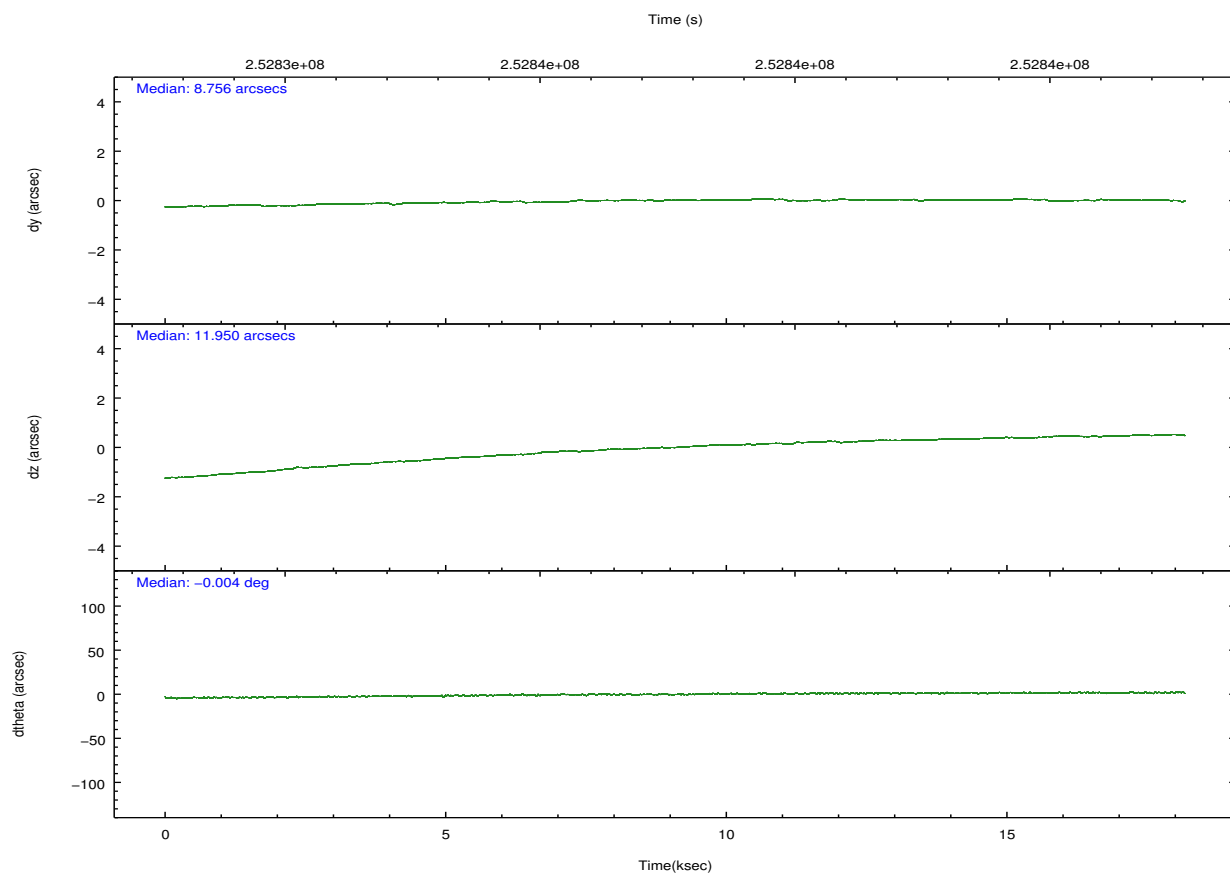
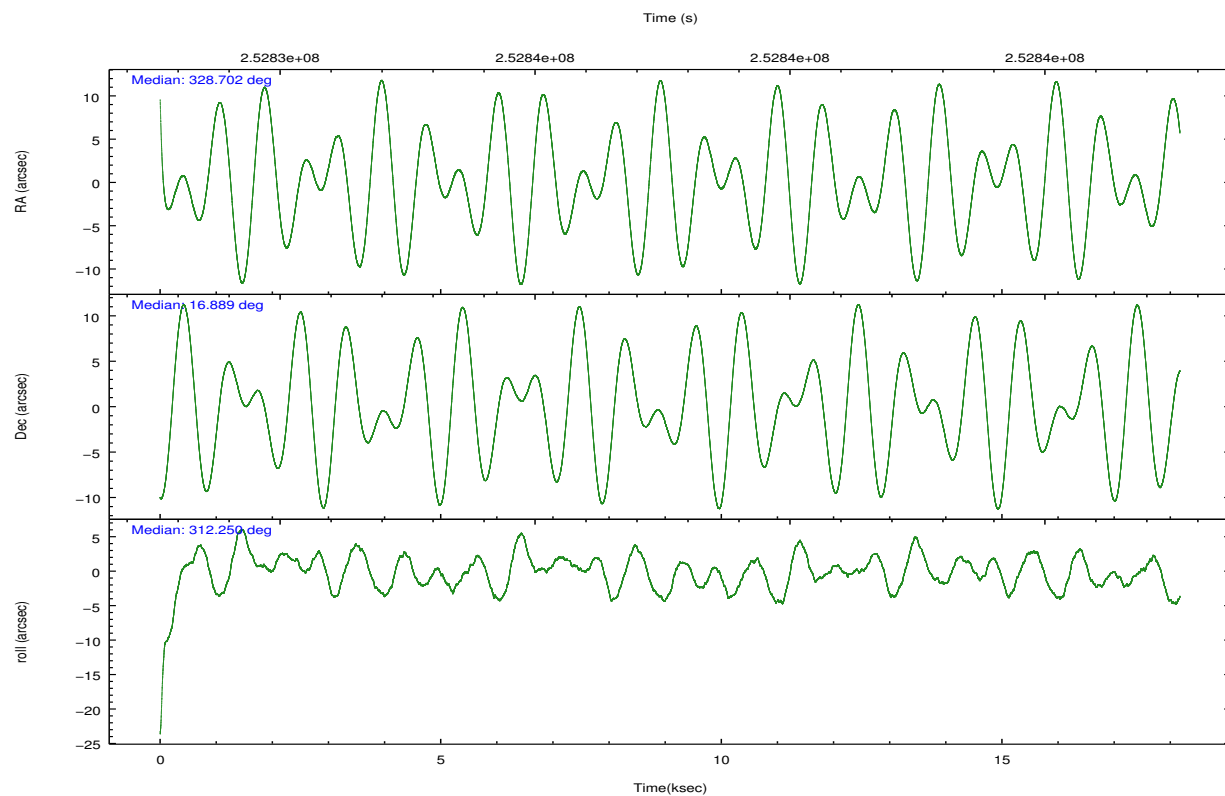
	ccd 2	ccd 3	ccd 5	ccd 6	ccd 7	ccd 8		ccd 2	ccd 3	ccd 5	ccd 6	ccd 7	ccd 8
level 1 events	128773	113919	150203	119326	111575	143138	grade 0 events	4155	4429	9418	4710	5505	9438
rejected events	117810	103245	73830	107310	58073	110255		3%	3%	6%	3%	4%	6%
rejected %	91%	90%	49%	89%	52%	77%	grade 1 events	66	59	198	60	127	109
								0%	0%	0%	0%	0%	0%
							grade 2 events	2645	2245	24369	2622	11720	7928
								2%	1%	16%	2%	10%	5%
							grade 3 events	1248	1202	3454	1367	5322	3856
								0%	1%	2%	1%	4%	2%
							grade 4 events	1251	1161	3369	1287	5482	3658
								0%	1%	2%	1%	4%	2%
							grade 5 events	3041	3883	12098	4035	12039	6066
								2%	3%	8%	3%	10%	4%
							grade 6 events	1989	1993	38292	2407	27085	9092
								1%	1%	25%	2%	24%	6%
							grade 7 events	114378	98947	59005	102838	44295	102991
								88%	86%	39%	86%	39%	71%

2.2 Compared Parameters

Parameter	Planned	Actual	Parameter	Planned	Actual
Instrument	ACIS	ACIS	Obspar format version number	7	7
Detector	ACIS-235678	ACIS-235678	Obspar file type	PREDICTED	ACTUAL
Grating	NONE	NONE	Obspar update status	NONE	UPDATED
Data mode	VFAINT	VFAINT	Number of optional ACIS chips dropped	0	0
Observation mode	POINTING	POINTING	On-chip summing requested	N	N
[deg] Pointing RA	328.675275	328.7025180937001	Subarray requested	NONE	NONE
[deg] Pointing Dec	16.897066	16.88910813696161	Alternating exposures requested	N	N
[deg] Pointing Roll	312.100826	312.2495289388905	[s] Primary exposure time	0.000000	3.2
[mm] SIM focus pos	-0.684267	-0.6828225247311905			
[mm] SIM defocus	0	0.001444936568705701			
[mm] SIM translation stage pos	-190.132523	-190.1400660498719			
[mm] SIM translation stage offset	0	0.00754346686406393			
[s] Observation start time (MET)	252828733.184000	252827394.07043			
Observation start date	2006-01-05T06:11:08	2006-01-05T05:49:54			
[s] Observation end time (MET)	252846733.184000	252847812.58388			
Observation end date	2006-01-05T11:11:08	2006-01-05T11:30:12			
Read mode	TIMED	TIMED			

2.3 Aspect



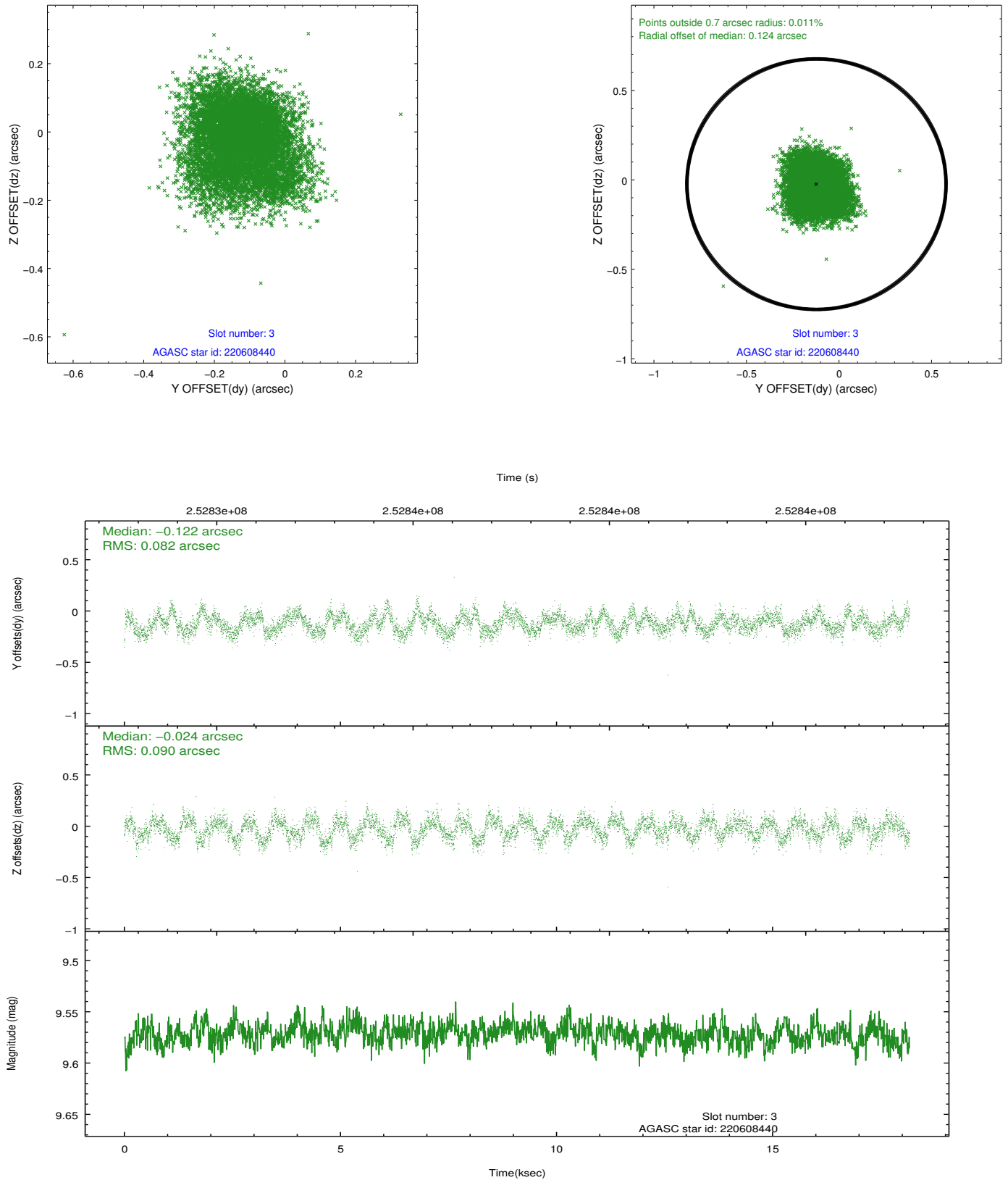


Slot Statistics

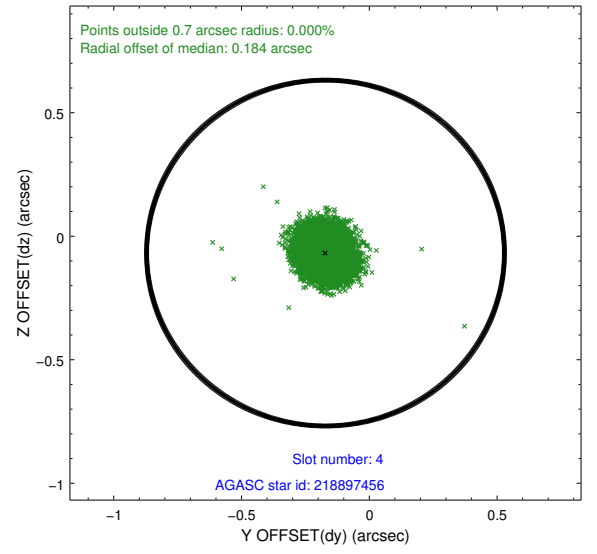
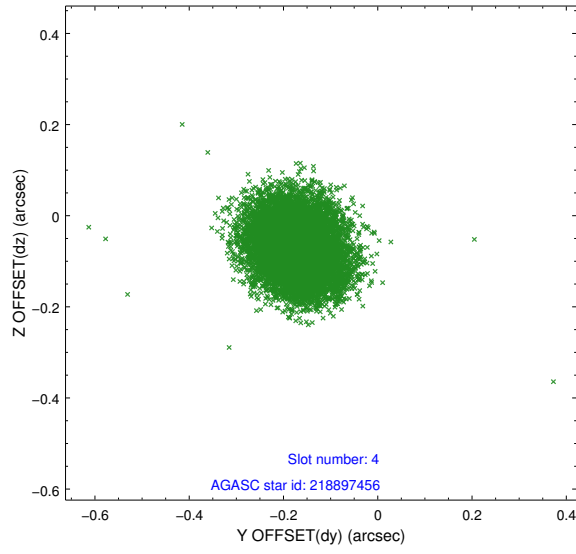
slot	status	id	mag	n_pts	med_dy	med_dz	dr1	dr2	ra	dec	mean_y	mean_z
0	FID	ACIS-S-2	7.11	4433	-0.012	-0.022	0.016	0.027	0.000000	0.000000	-761.52	-1733.14
1	FID	ACIS-S-4	7.20	4431	0.115	0.013	0.008	0.016	0.000000	0.000000	2151.78	175.15
2	FID	ACIS-S-5	7.23	4433	-0.133	0.019	0.015	0.025	0.000000	0.000000	-1814.20	169.07
3	GUIDE	220608440	9.57	8855	-0.122	-0.024	0.130	0.204	328.040690	17.032344	-1828.16	-1291.85
4	GUIDE	218897456	8.86	8858	-0.171	-0.068	0.081	0.129	327.959264	17.146658	-2321.26	-1222.35
5	GUIDE	220071528	8.64	8862	0.108	-0.094	0.070	0.114	328.933551	16.712940	1088.66	216.50
6	GUIDE	220070480	9.56	8856	0.111	0.030	0.117	0.185	329.218530	16.608789	2025.23	696.56
7	GUIDE	220070000	9.62	8852	0.075	0.168	0.108	0.176	329.283110	16.602011	2192.43	846.48

2.4 Star Slots

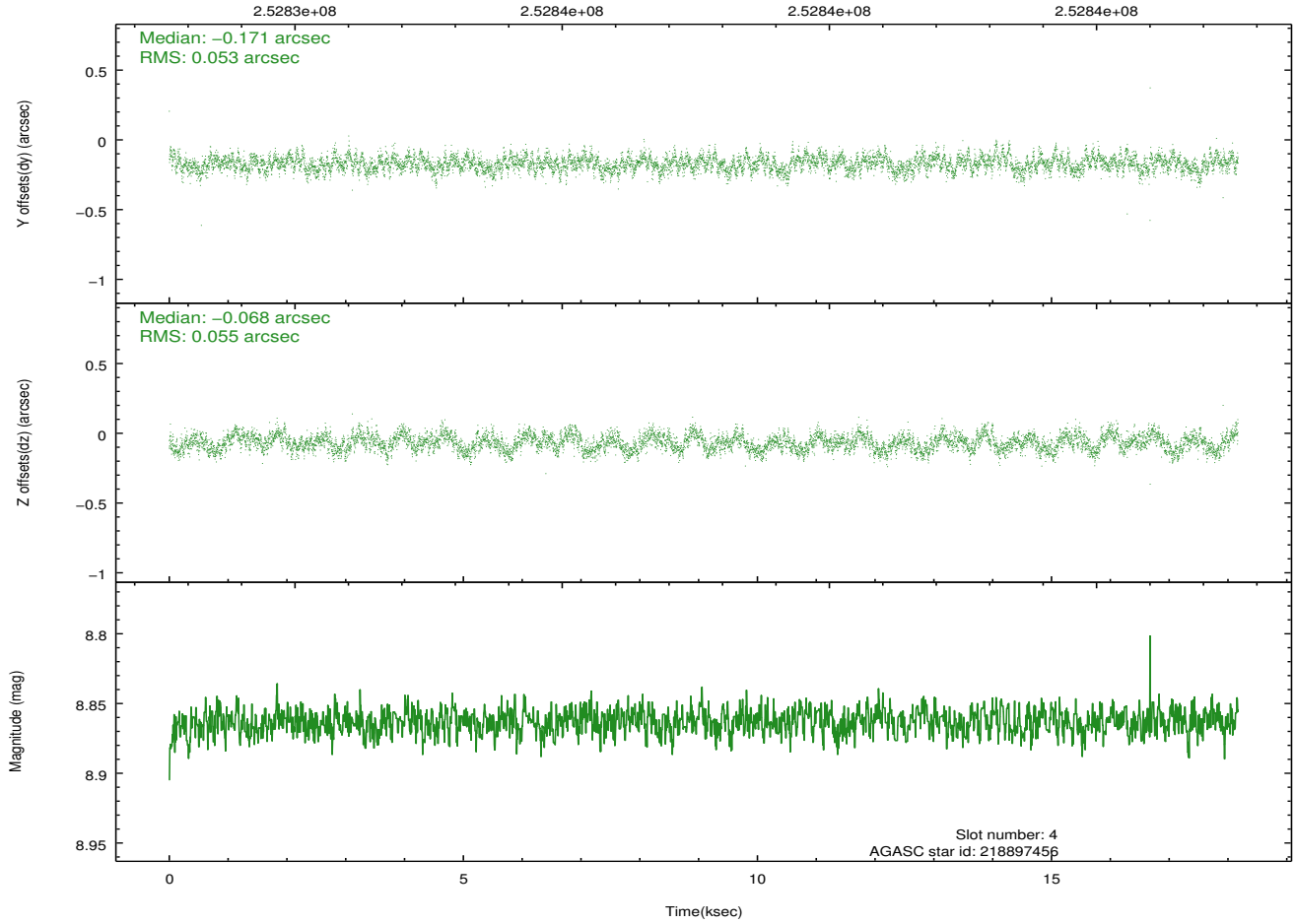
2.4.1 Slot 3



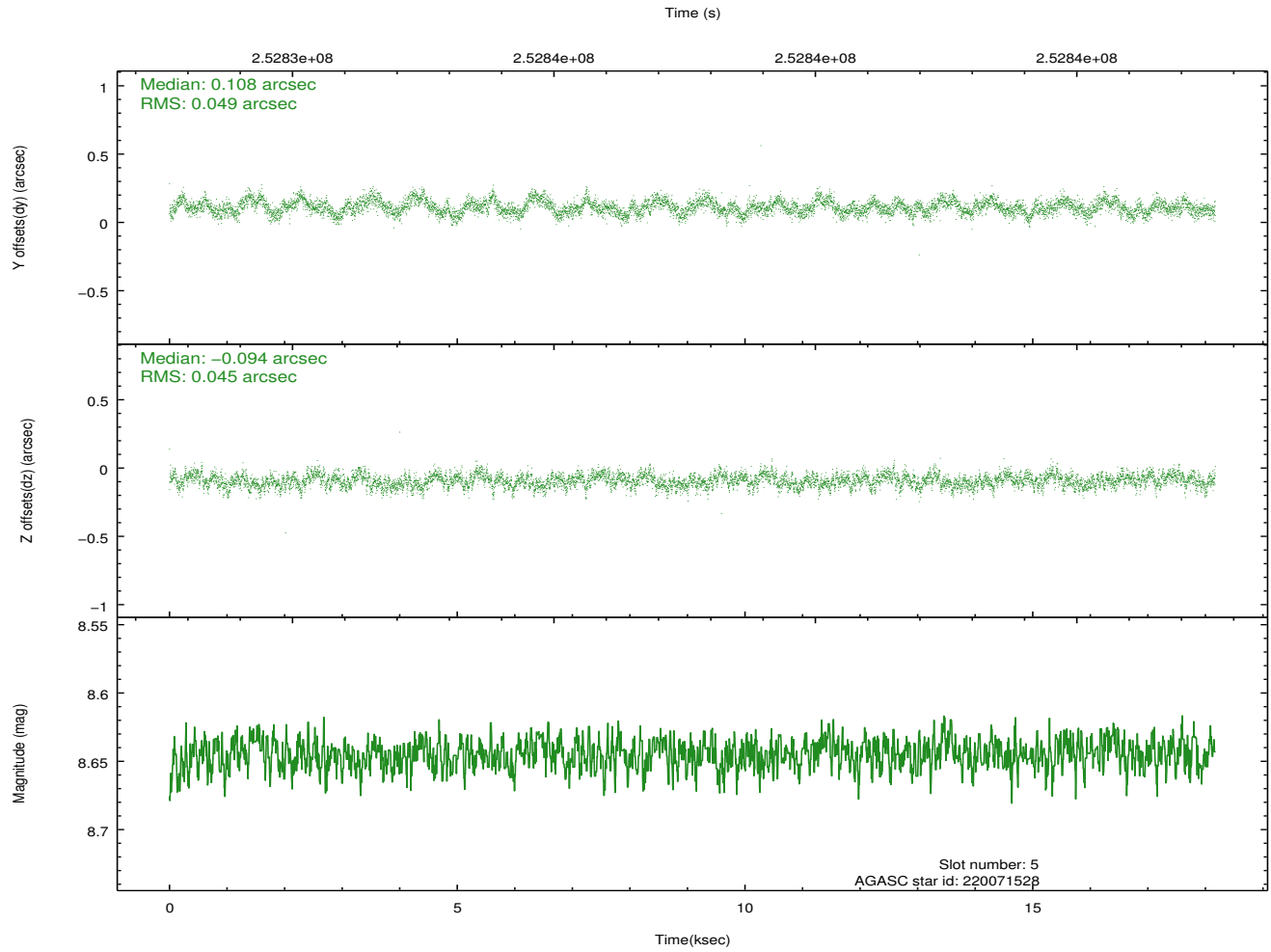
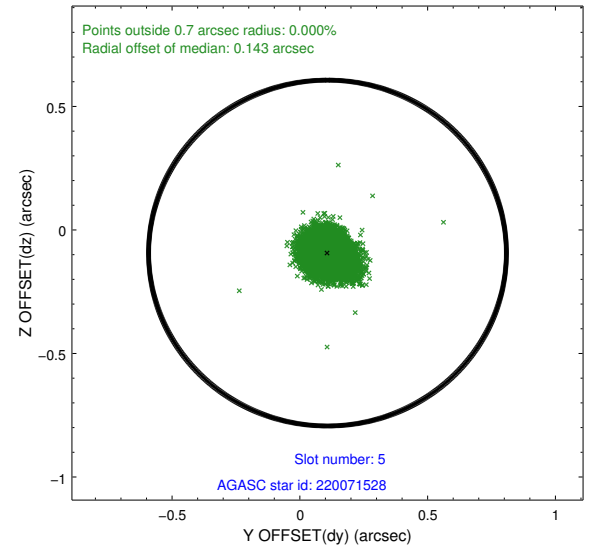
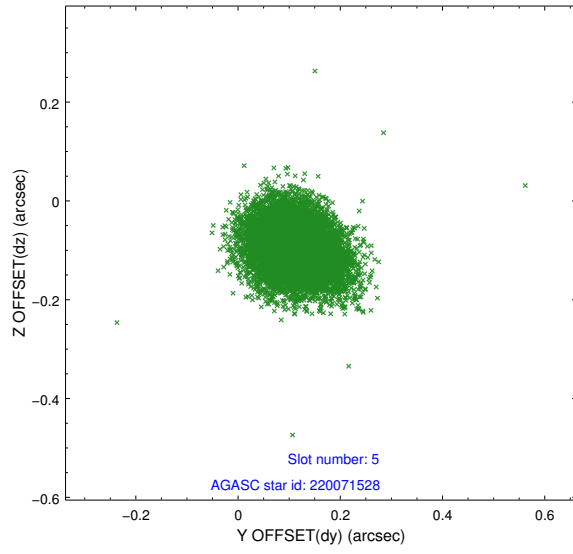
2.4.2 Slot 4



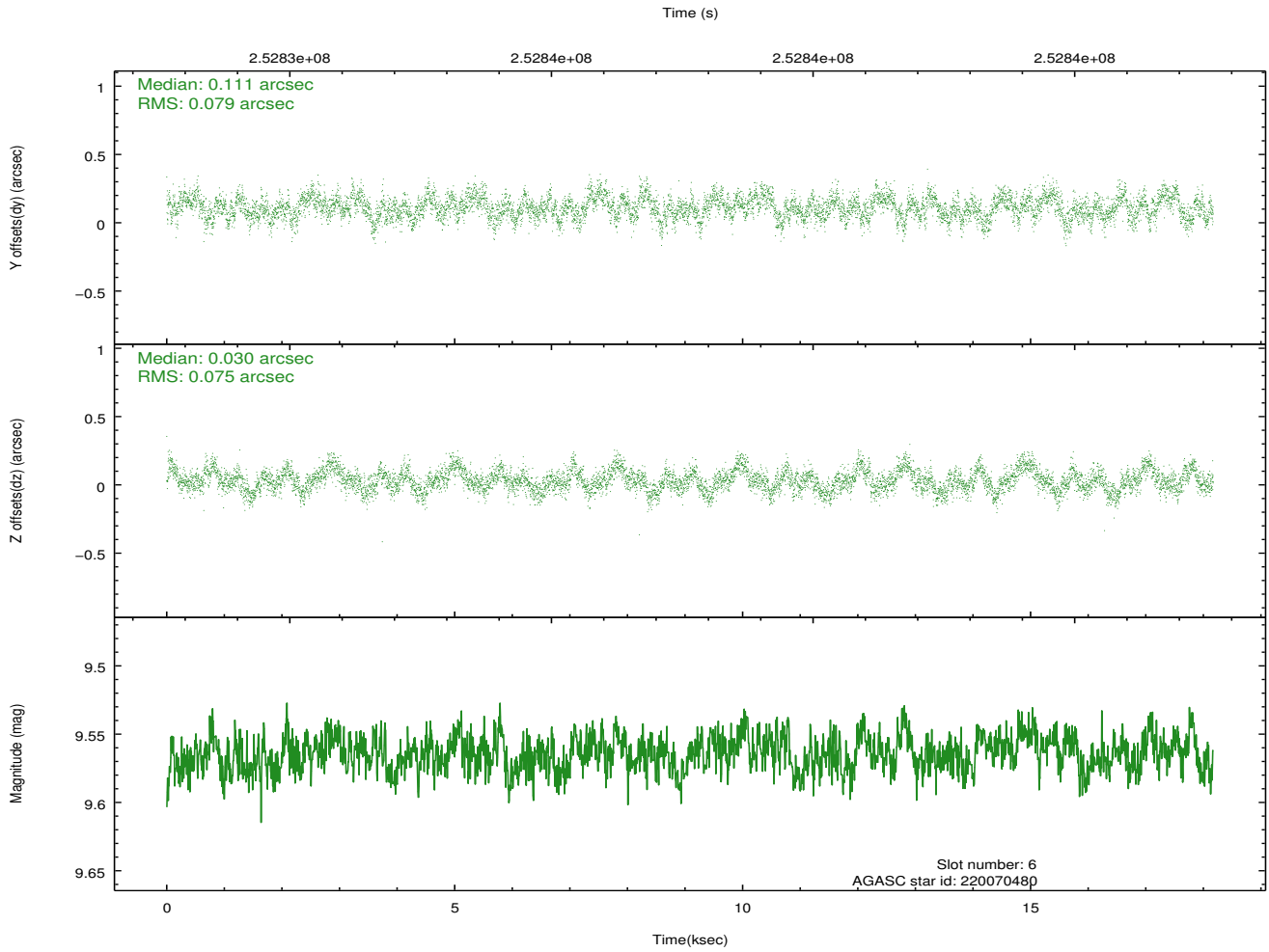
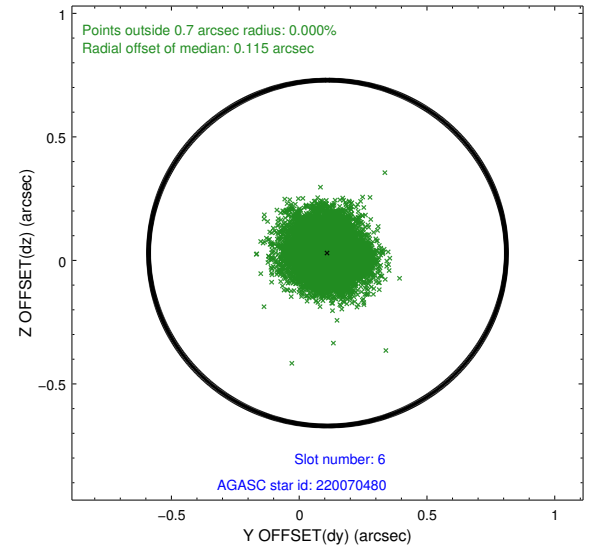
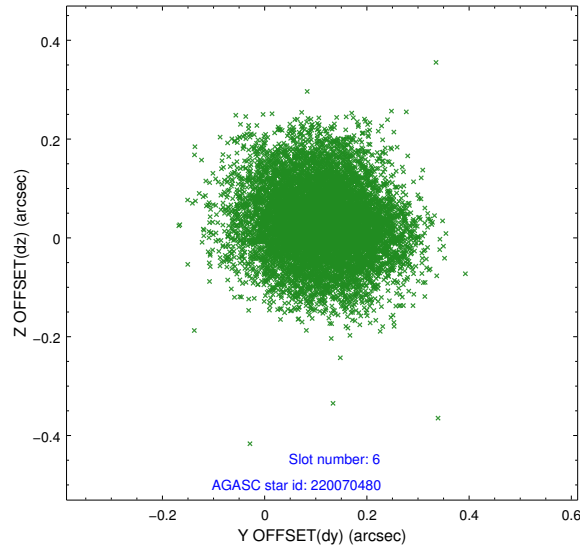
Time (s)



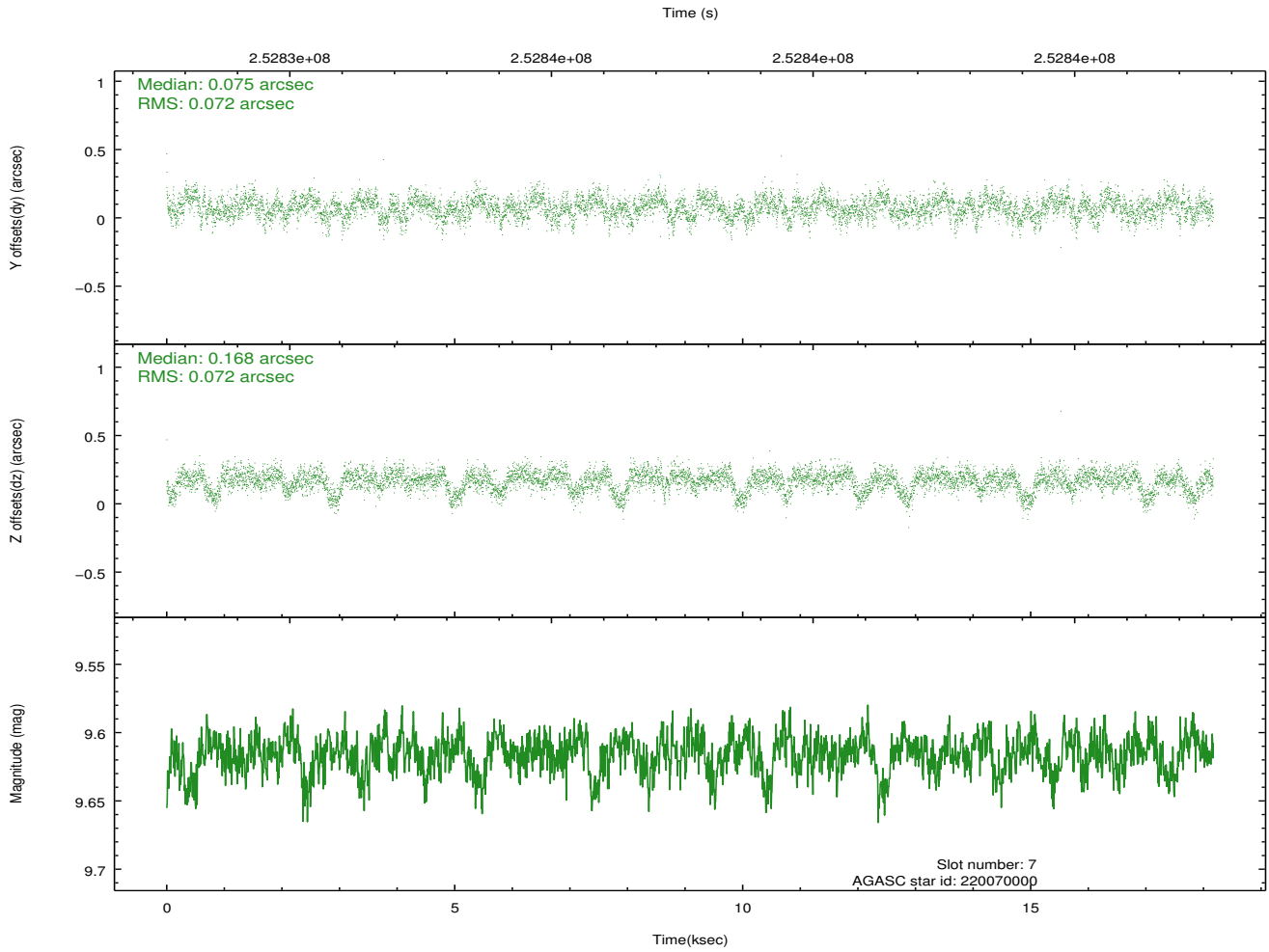
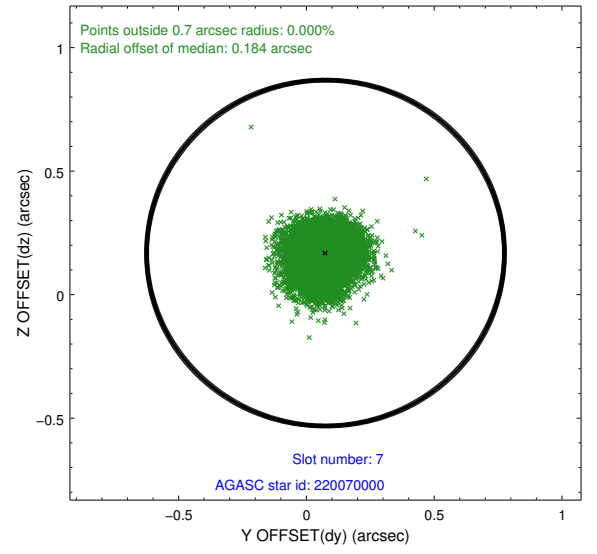
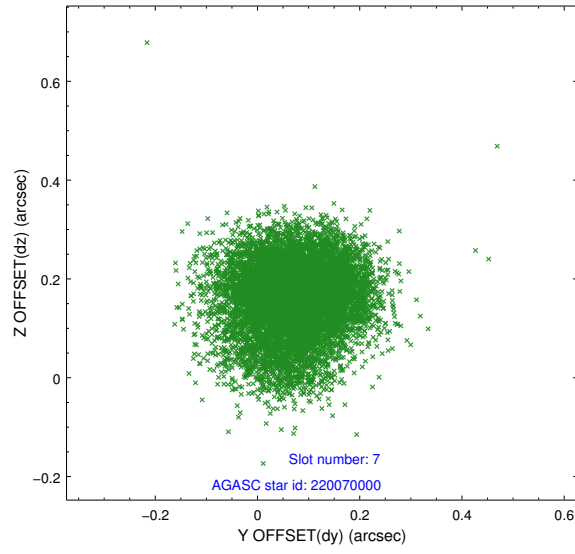
2.4.3 Slot 5



2.4.4 Slot 6

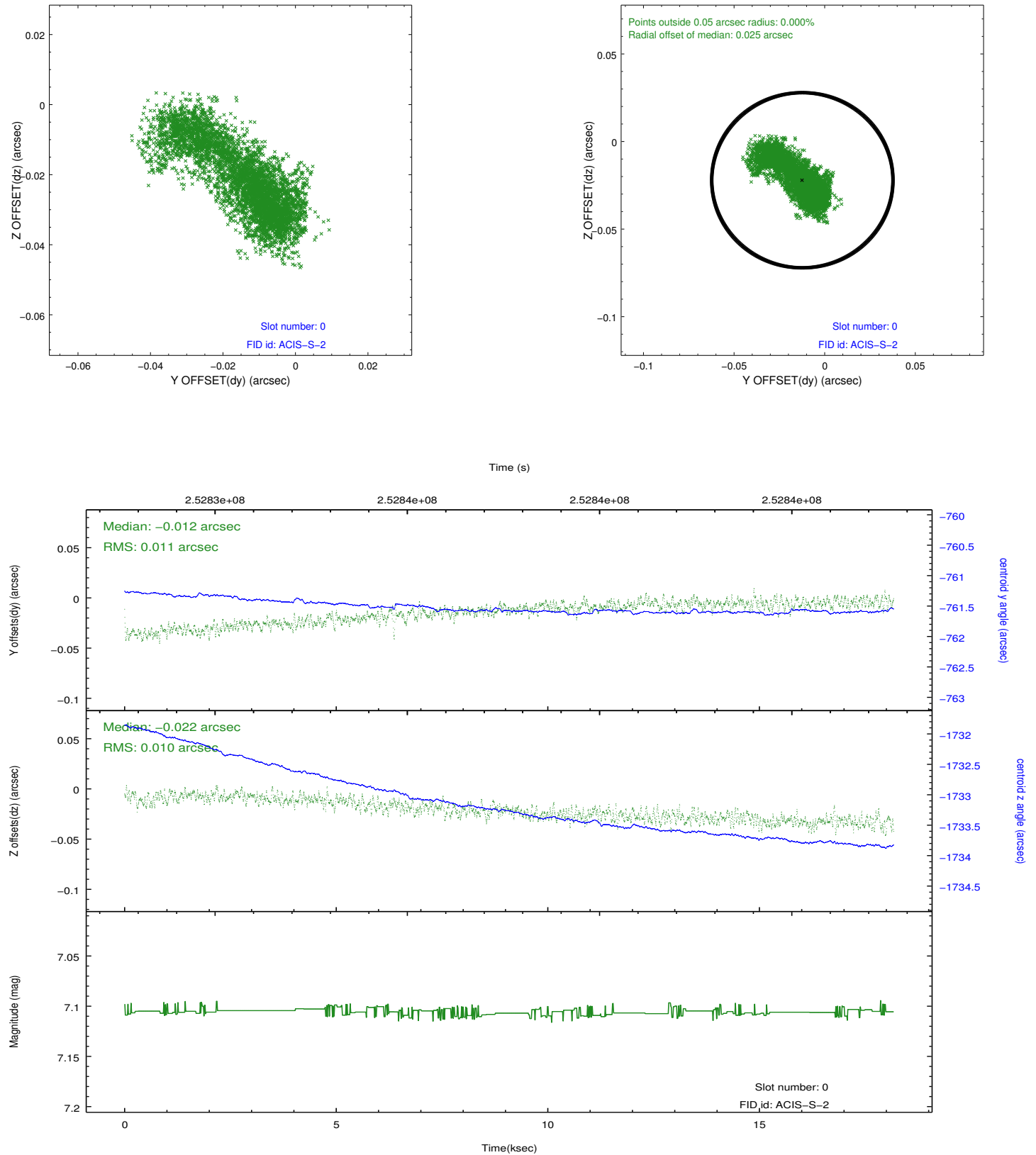


2.4.5 Slot 7

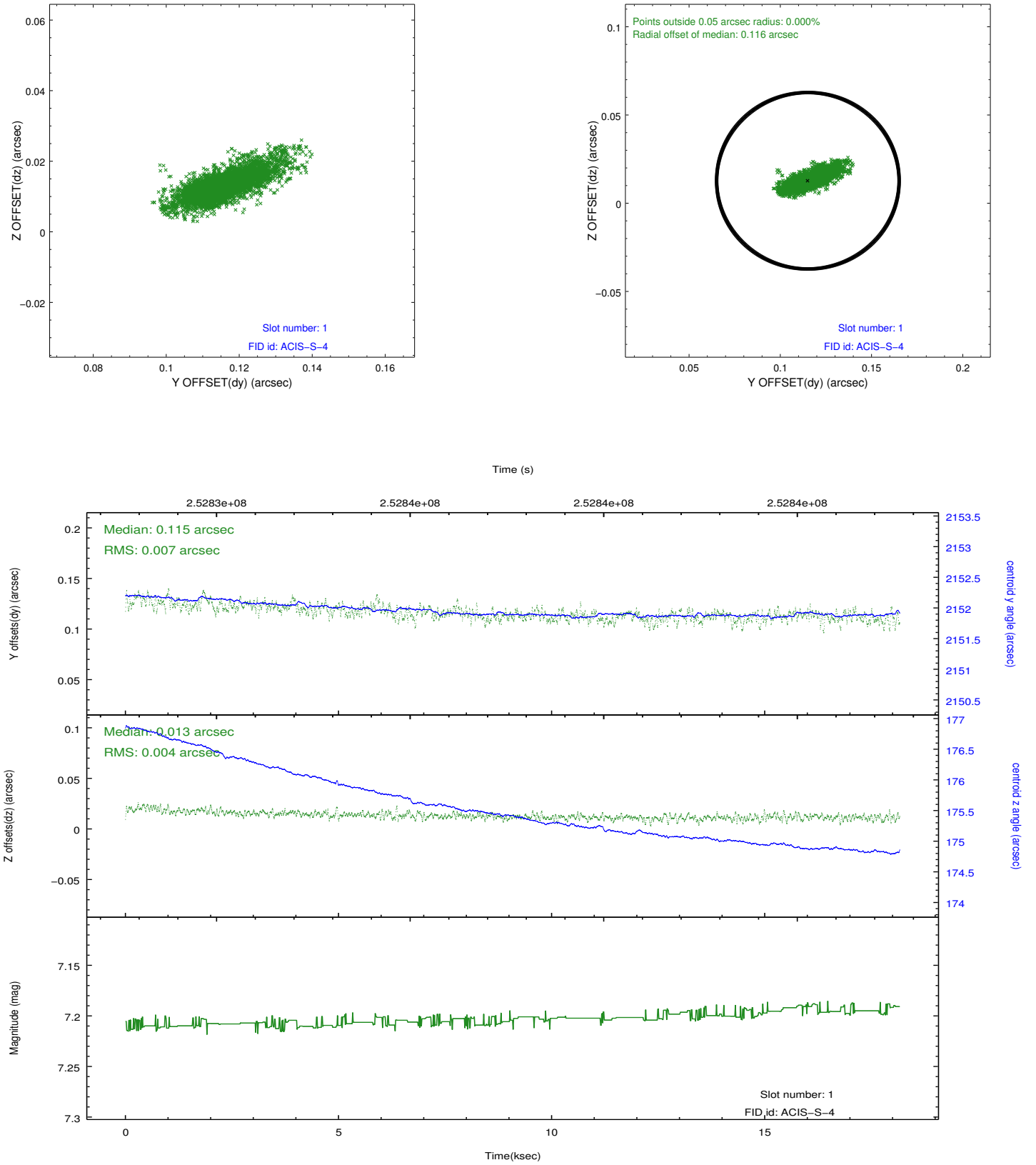


2.5 FID Slots

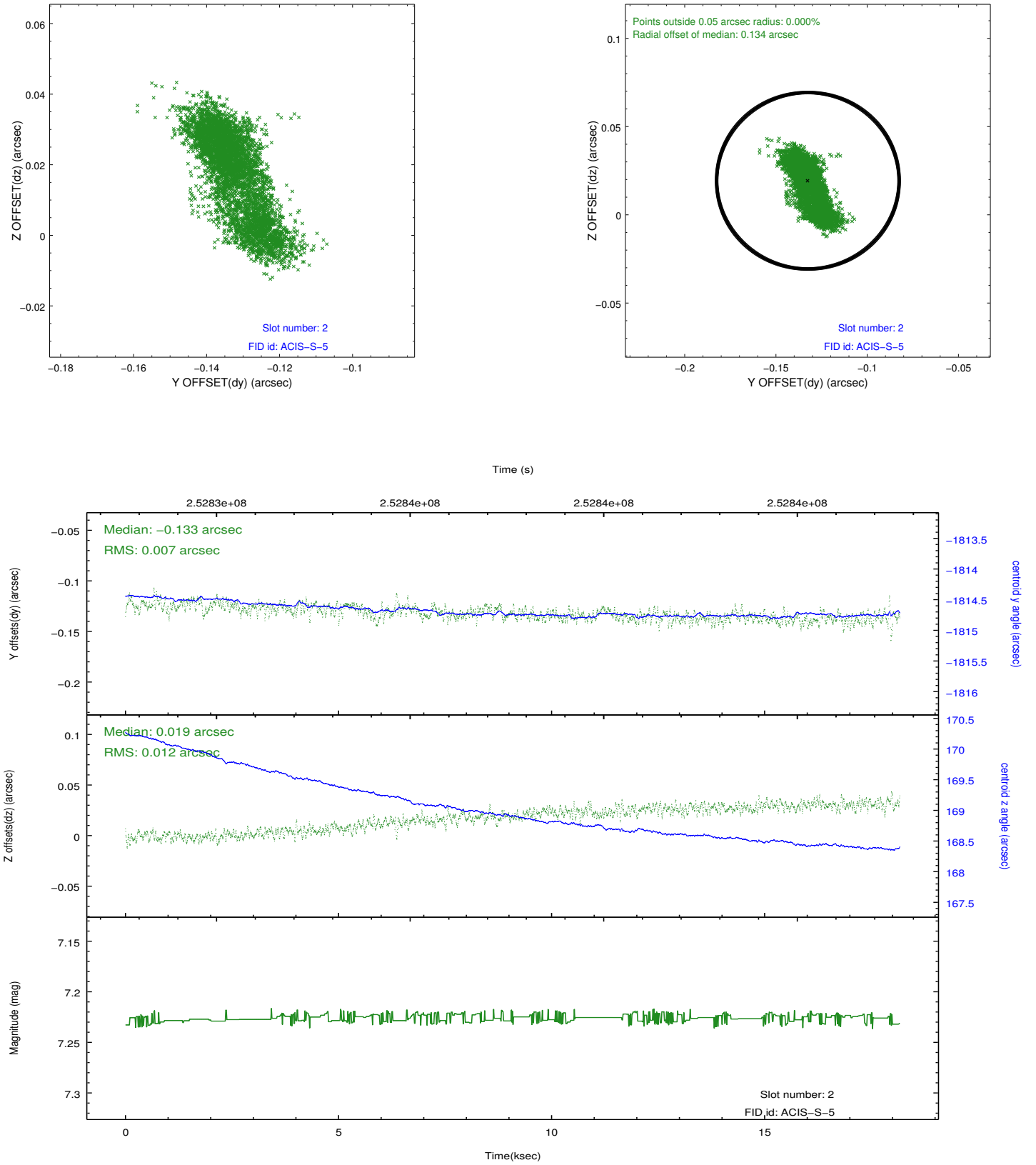
2.5.1 Slot 0



2.5.2 Slot 1



2.5.3 Slot 2



A Summary

A.1 Status

V&V Scientist	Jen Lauer
V&V Date (YYYY-MM-DD)	2012.03.22
V&V Edition	1
V&V Disposition and Status	OK
V&V Charge Time	18.16319

A.2 Comments