

V&V Reference Report

L2 ASCDS Version : 8.4.4

Observation 6689 - L2 Version 3
Chandra X-Ray Center

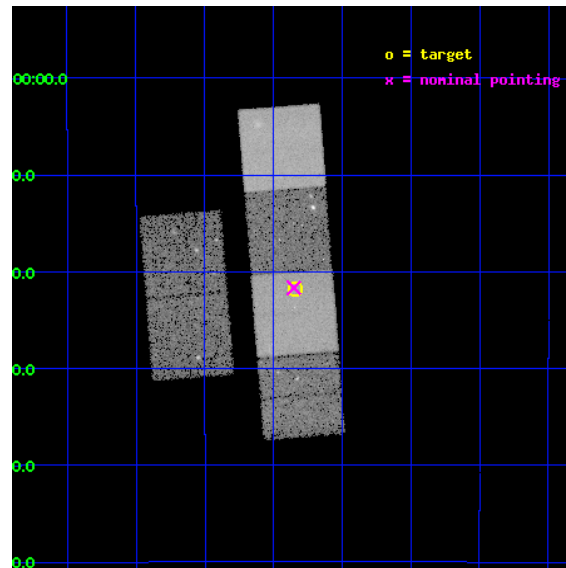
L2 Processing Date : Apr 20 2012

Contents

1	Front	2
2	OBI	3
2.1	OBI	3
2.1.1	Images	3
2.1.2	Bias	3
2.1.3	Parameters	4
2.1.4	Events	4
2.2	Compared Parameters	5
2.3	Aspect	6
2.4	Star Slots	9
2.4.1	Slot 3	9
2.4.2	Slot 4	10
2.4.3	Slot 5	11
2.4.4	Slot 6	12
2.4.5	Slot 7	13
2.5	FID Slots	14
2.5.1	Slot 0	14
2.5.2	Slot 1	15
2.5.3	Slot 2	16
A	Summary	17
A.1	Status	17
A.2	Comments	17

1 Front

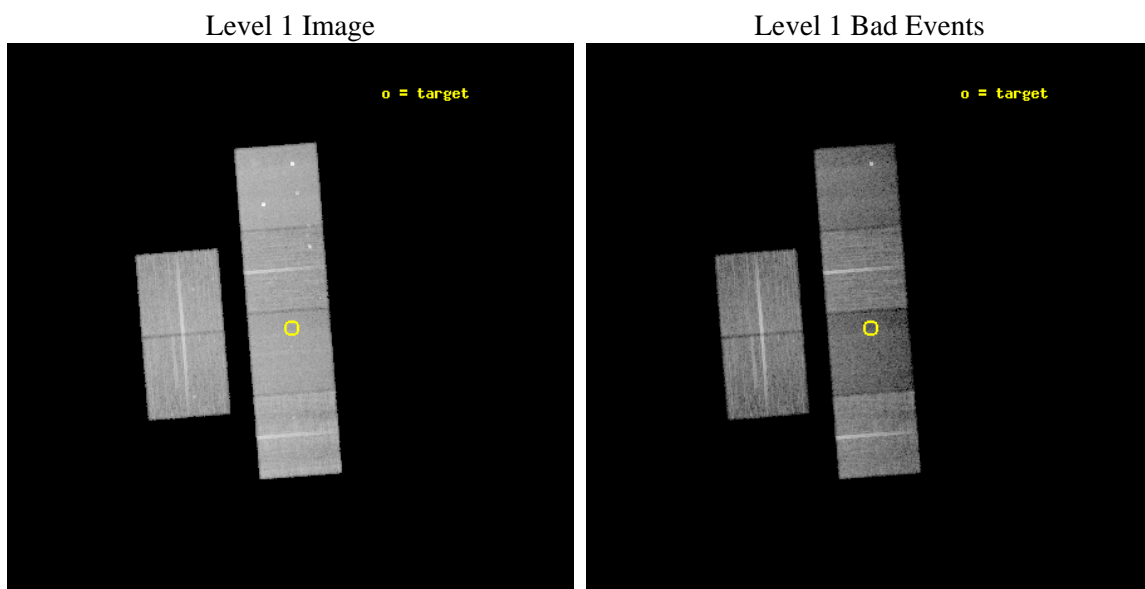
seq_num	500640	Sequence number
obs_id	6689	Observation id
title	After CAS A: A Search for the Youngest Supernova Remnants in the Galaxy	Proposal title
observer	Prof. David Helfand	Principal investigator
object	G14.4-0.0	Source name
dtcycle	0	
cycle	P	events from which exps? Prim/Second/Both
ra_targ	274.21125	Observer's specified target RA [deg]
dec_targ	-16.3625	Observer's specified target Dec [deg]
ra_nom	274.21305644039	Nominal RA [deg]
dec_nom	-16.36131817549	Nominal Dec [deg]
roll_nom	85.475341527502	Nominal Roll [deg]
revision	3	Processing version of data
ontime	16044.799940288	Sum of GTIs [s]
livetime	15841.631022425	Livetime [s]
ontime2	16038.318019748	Sum of GTIs [s]
ontime3	16041.558950126	Sum of GTIs [s]
ontime5	16044.799940288	Sum of GTIs [s]
ontime6	16044.799940288	Sum of GTIs [s]
ontime7	16044.799940288	Sum of GTIs [s]
ontime8	16044.799940288	Sum of GTIs [s]
l2events	183371	Number of level 2 events



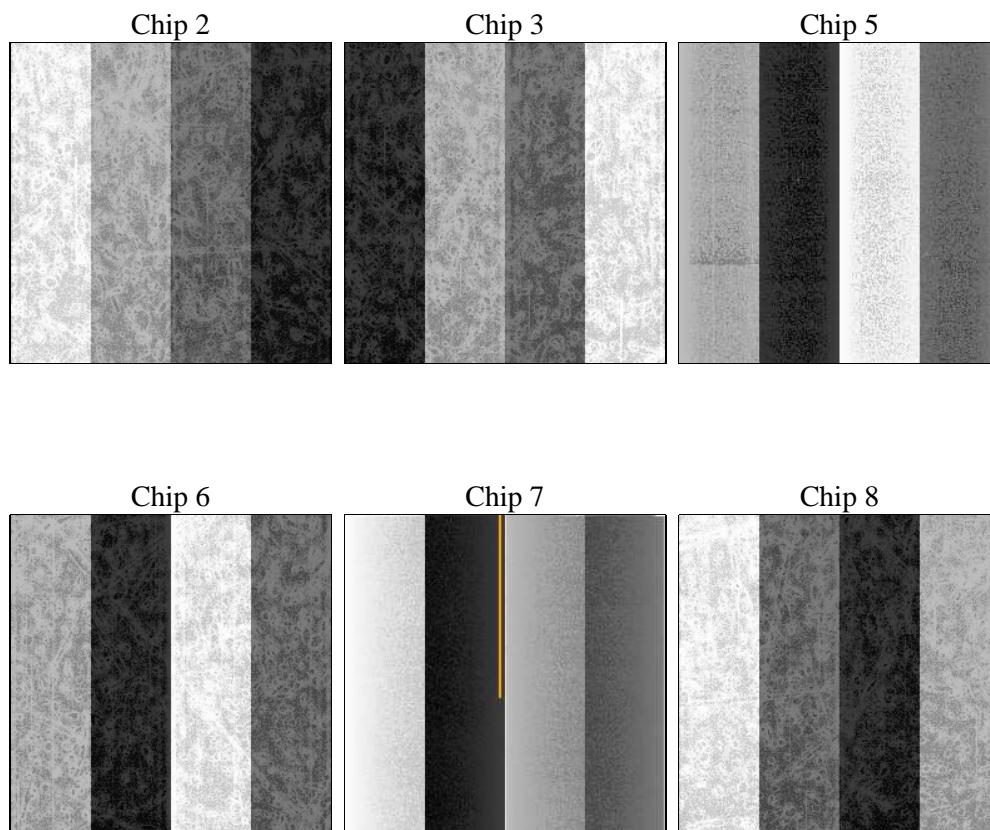
2 OBI

2.1 OBI

2.1.1 Images



2.1.2 Bias



2.1.3 Parameters

obi_num	1	Obi number	sched_exp_time	16000.000000	[s] Scheduled observation exposure time
ascdsver	8.4.4	Processing system revision	ontime	16044.799940288	Sum of GTIs [s]
caldsver	4.4.9	 	ontime2	16038.318019748	Sum of GTIs [s]
date	2012-04-20T03:30:14	Date and time of file creation	ontime3	16041.558950126	Sum of GTIs [s]
revision	3	Processing version of data	ontime5	16044.799940288	Sum of GTIs [s]
			ontime6	16044.799940288	Sum of GTIs [s]
			ontime7	16044.799940288	Sum of GTIs [s]
			ontime8	16044.799940288	Sum of GTIs [s]
			l1events	775412	Number of level 1 events

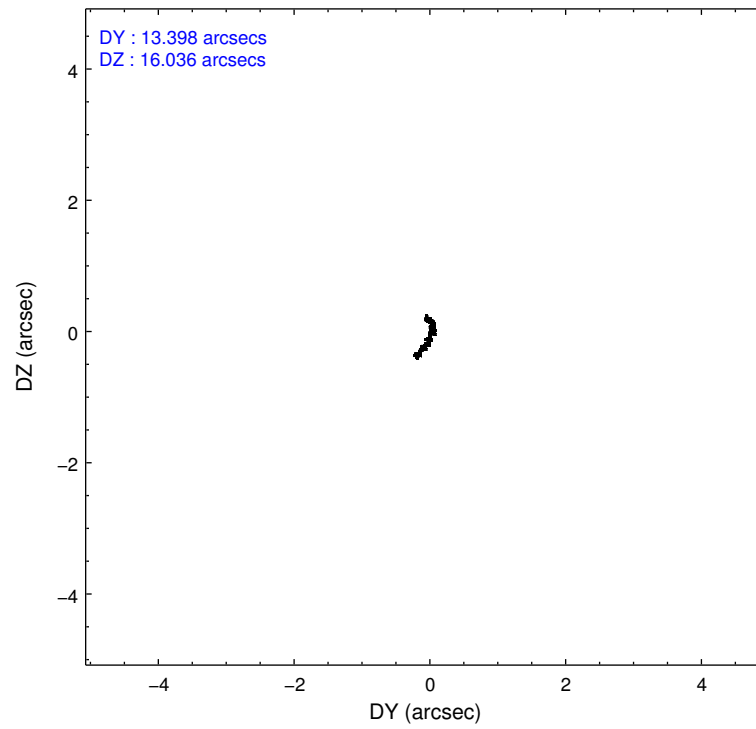
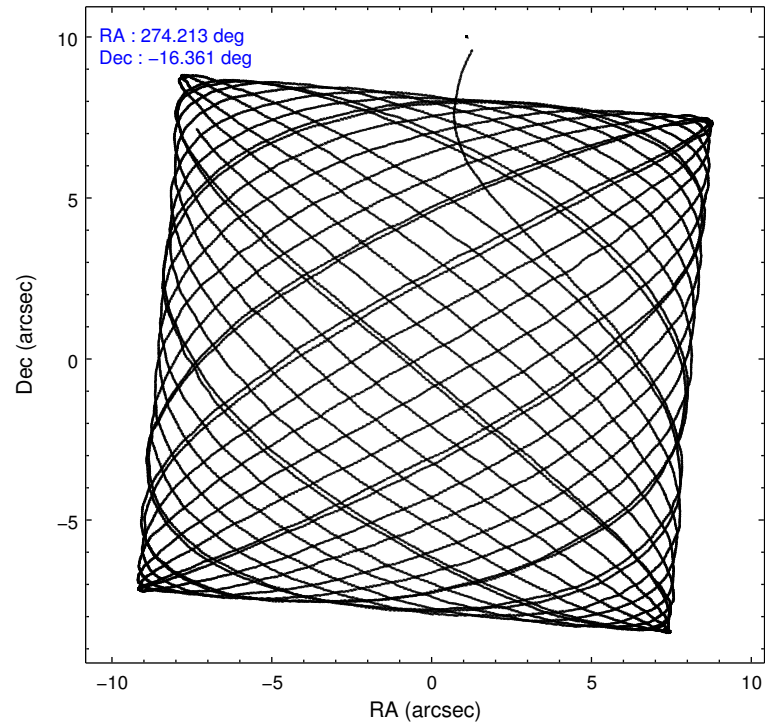
2.1.4 Events

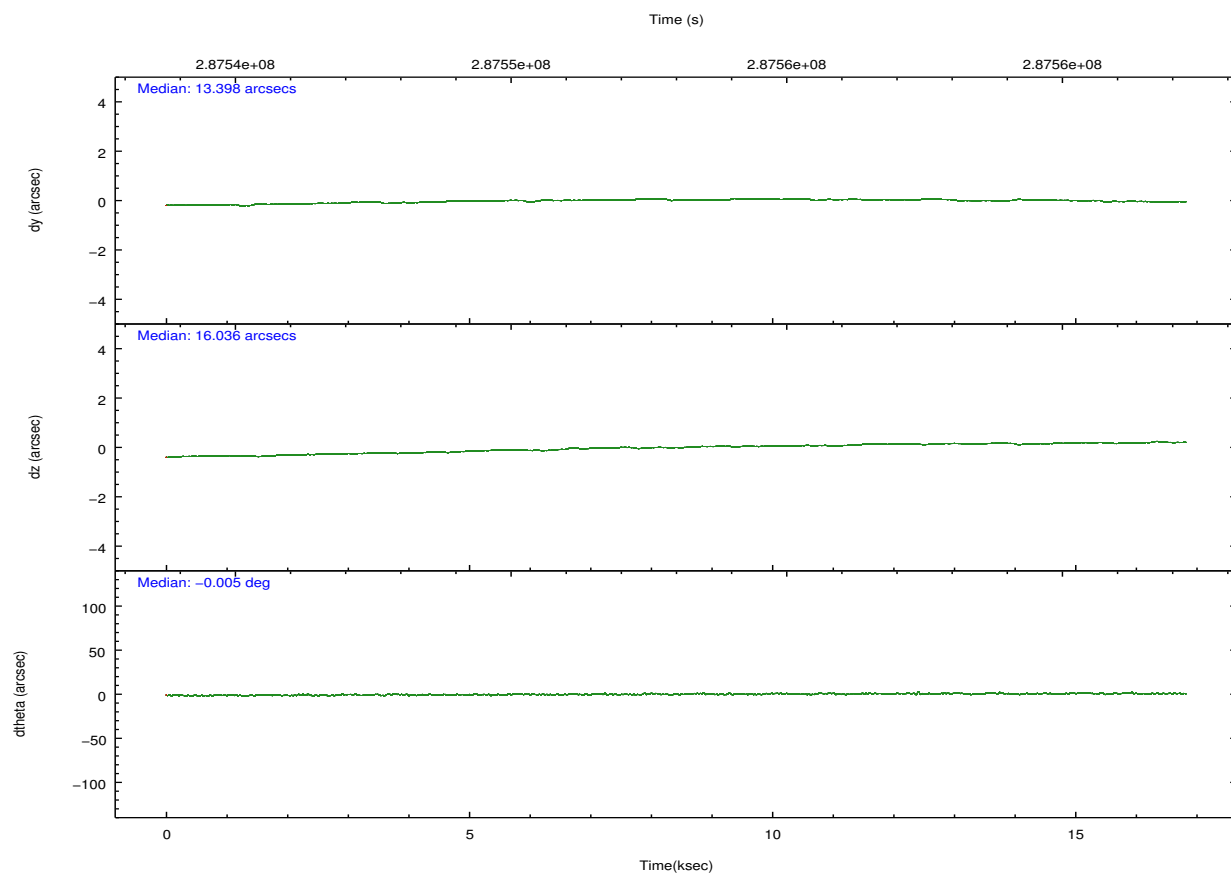
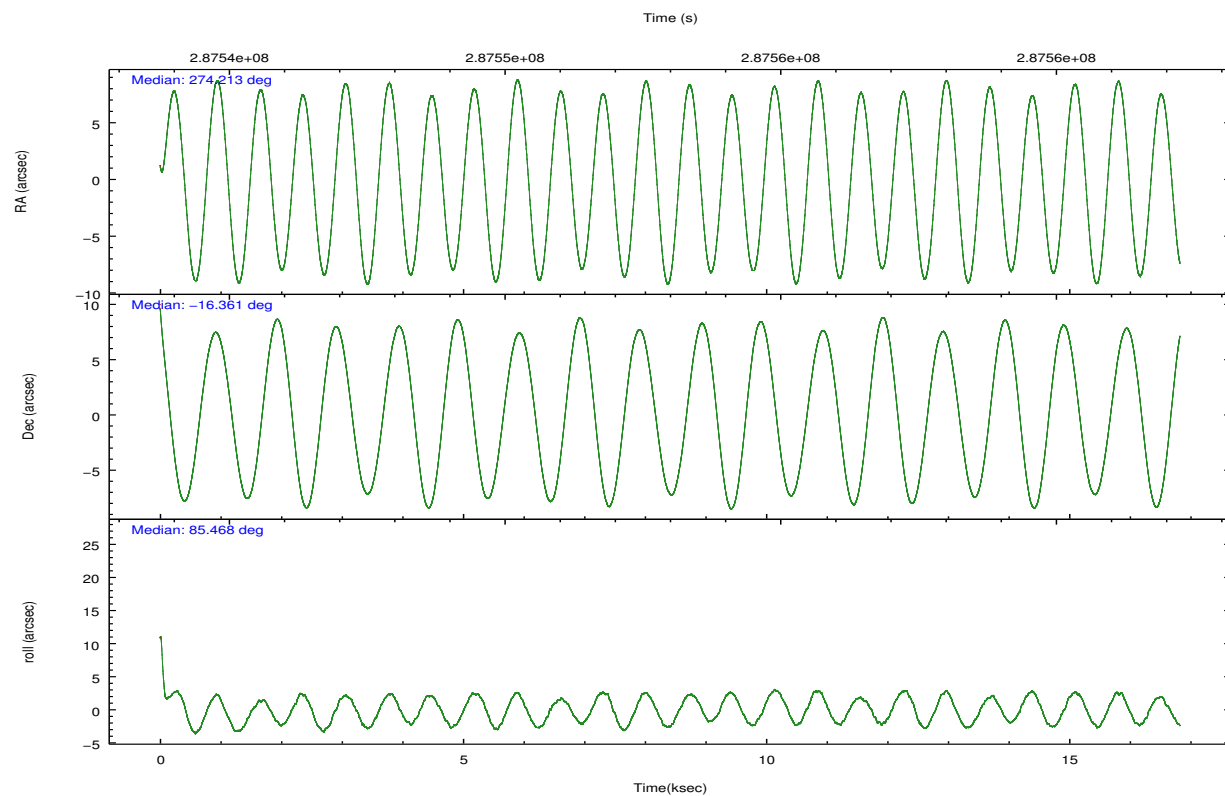
	ccd 2	ccd 3	ccd 5	ccd 6	ccd 7	ccd 8		ccd 2	ccd 3	ccd 5	ccd 6	ccd 7	ccd 8
level 1 events	124325	113634	151610	122380	115333	148130	grade 0 events	5367	5060	10770	7806	7465	13999
rejected events	111582	101707	68634	105864	54847	107637		4%	4%	7%	6%	6%	9%
rejected %	89%	89%	45%	86%	47%	72%	grade 1 events	79	65	319	78	143	138
								0%	0%	0%	0%	0%	0%
							grade 2 events	2856	2401	26057	3182	13066	8834
								2%	2%	17%	2%	11%	5%
							grade 3 events	1212	1259	3776	1480	5940	4315
								0%	1%	2%	1%	5%	2%
							grade 4 events	1322	1181	3525	1464	5699	3783
								1%	1%	2%	1%	4%	2%
							grade 5 events	3315	3805	11884	3947	11724	5828
								2%	3%	7%	3%	10%	3%
							grade 6 events	1989	2027	38863	2587	28335	9563
								1%	1%	25%	2%	24%	6%
							grade 7 events	108185	97836	56416	101836	42961	101670
								87%	86%	37%	83%	37%	68%

2.2 Compared Parameters

Parameter	Planned	Actual	Parameter	Planned	Actual
Instrument	ACIS	ACIS	Obspar format version number	7	7
Detector	ACIS-235678	ACIS-235678	Obspar file type	PREDICTED	ACTUAL
Grating	NONE	NONE	Obspar update status	NONE	UPDATED
Data mode	VFAINT	VFAINT	CCD I0 on	N	N
Observation mode	POINTING	POINTING	CCD I1 on	N	N
[deg] Pointing RA	274.225650	274.2130564403924	CCD I2 on	Y	Y
[deg] Pointing Dec	-16.385815	-16.36131817548984	CCD I3 on	Y	Y
[deg] Pointing Roll	85.322265	85.47534152750188	CCD S0 on	N	N
[mm] SIM focus pos	-0.684267	-0.6828225247311905	CCD S1 on	O1	Y
[mm] SIM defocus	0	0.001444936568705701	CCD S2 on	Y	Y
[mm] SIM translation stage pos	-190.132523	-190.1400660498719	CCD S3 on	Y	Y
[mm] SIM translation stage offset	0	0.00754346686406393	CCD S4 on	Y	Y
[s] Observation start time (MET)	287545394.184000	287544070.36077	CCD S5 on	N	N
Observation start date	2007-02-11T01:42:09	2007-02-11T01:21:10	Number of optional ACIS chips dropped	0	0
[s] Observation end time (MET)	287561394.184000	287561815.67411	On-chip summing requested	N	N
Observation end date	2007-02-11T06:08:49	2007-02-11T06:16:55	Subarray requested	NONE	NONE
Read mode	TIMED	TIMED	Alternating exposures requested	N	N
			[s] Primary exposure time	0.000000	3.2

2.3 Aspect



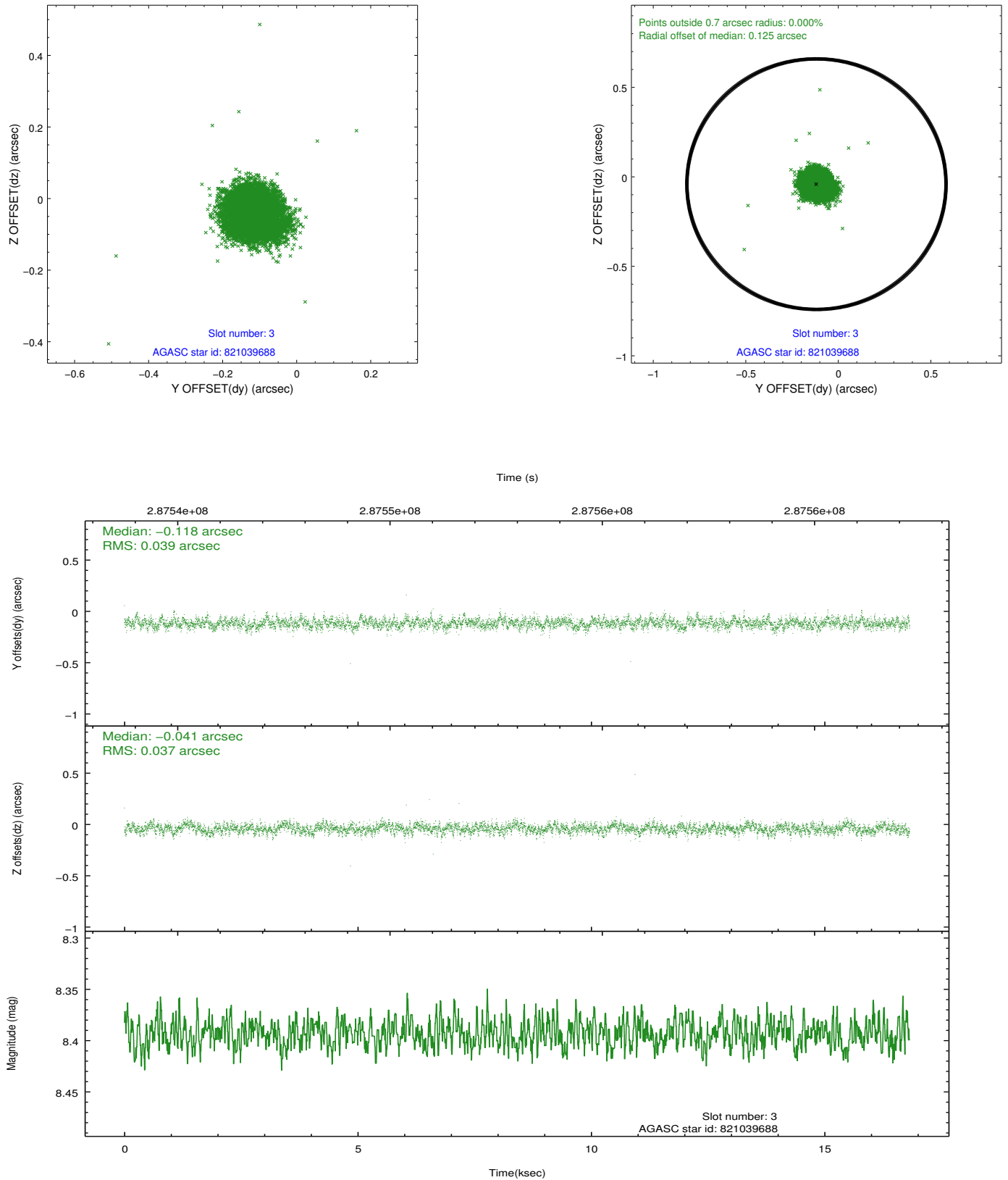


Slot Statistics

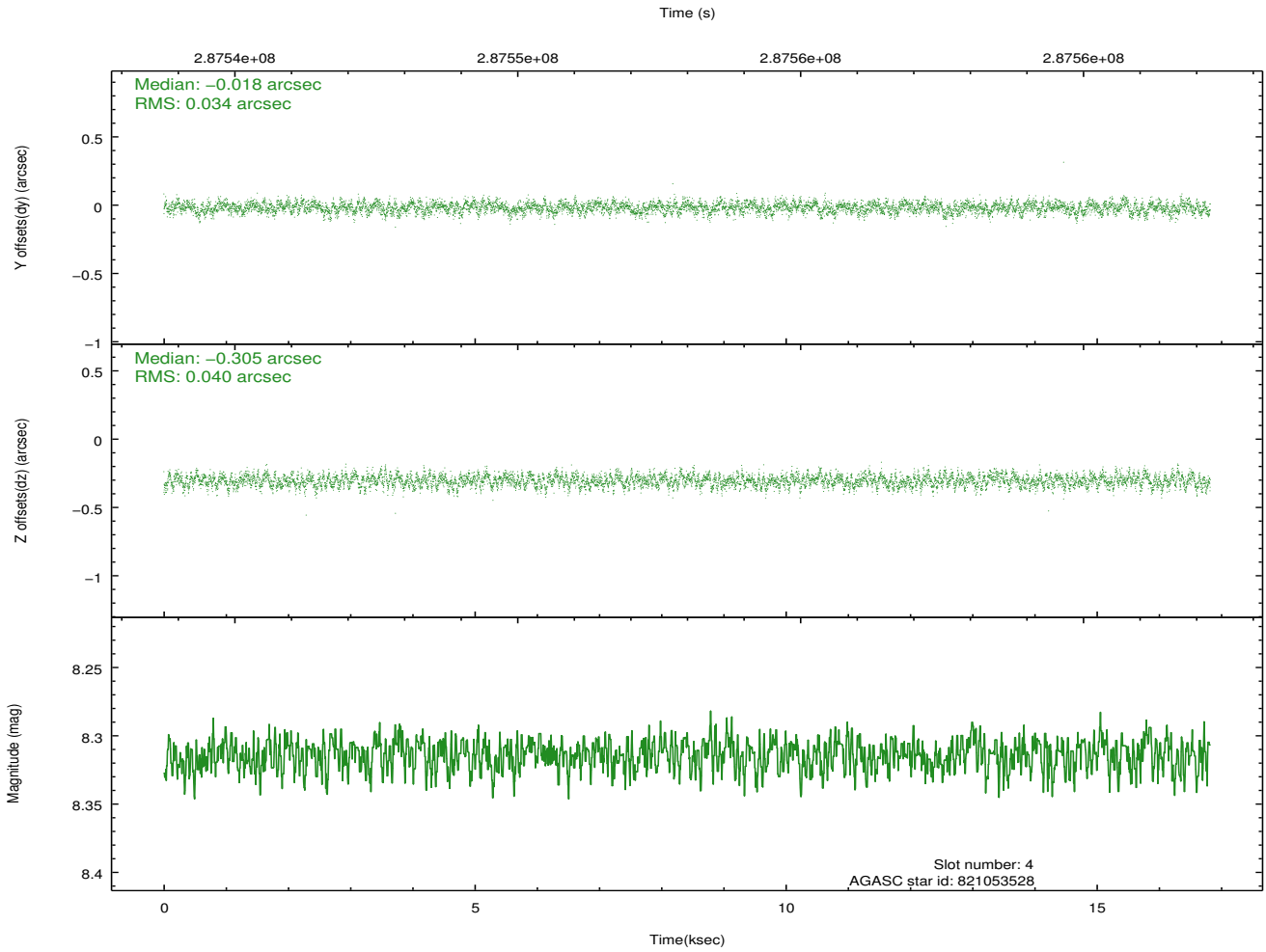
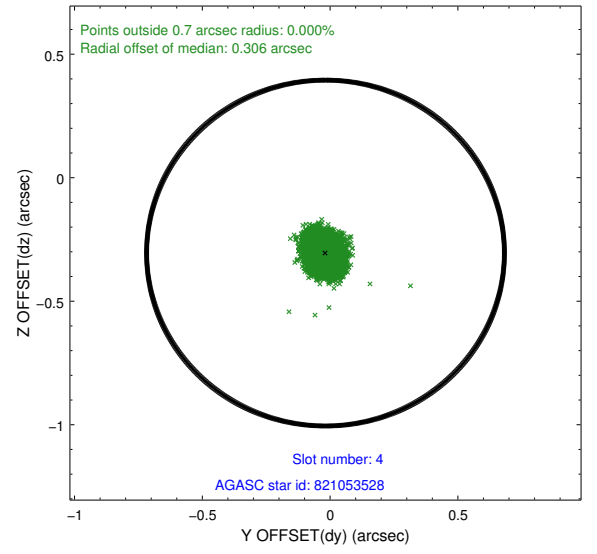
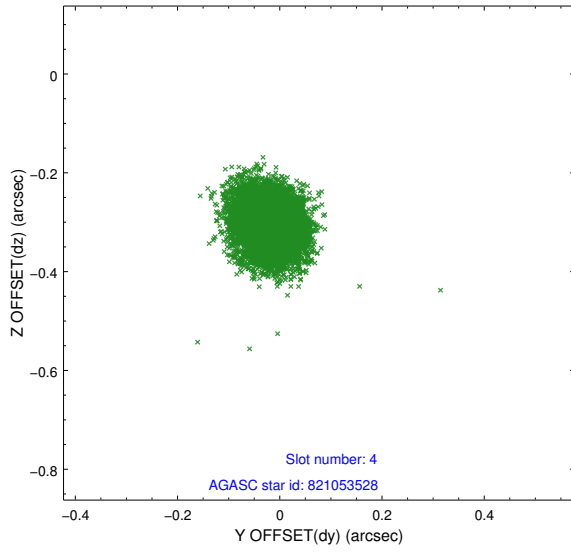
slot	status	id	mag	n_pts	med_dy	med_dz	dr1	dr2	ra	dec	mean_y	mean_z
0	FID	ACIS-S-1	7.19	4104	0.102	-0.110	0.010	0.019	0.000000	0.000000	929.84	-1733.14
1	FID	ACIS-S-5	7.23	4104	-0.159	0.057	0.009	0.015	0.000000	0.000000	-1819.28	164.32
2	FID	ACIS-S-6	7.33	4104	0.037	0.066	0.009	0.016	0.000000	0.000000	395.06	808.57
3	GUIDE	821039688	8.39	8203	-0.118	-0.041	0.056	0.091	273.919750	-15.893728	1678.37	1200.45
4	GUIDE	821053528	8.31	8204	-0.018	-0.305	0.056	0.090	273.625019	-16.498449	-576.28	2033.13
5	GUIDE	821181816	8.41	8204	0.001	0.365	0.079	0.125	274.847938	-16.750455	-1136.27	-2244.68
6	GUIDE	821186736	7.94	8203	0.050	0.115	0.052	0.086	274.765126	-16.656680	-822.23	-1934.18
7	GUIDE	821035568	7.89	8203	0.084	-0.136	0.063	0.101	273.834124	-16.831485	-1710.38	1213.36

2.4 Star Slots

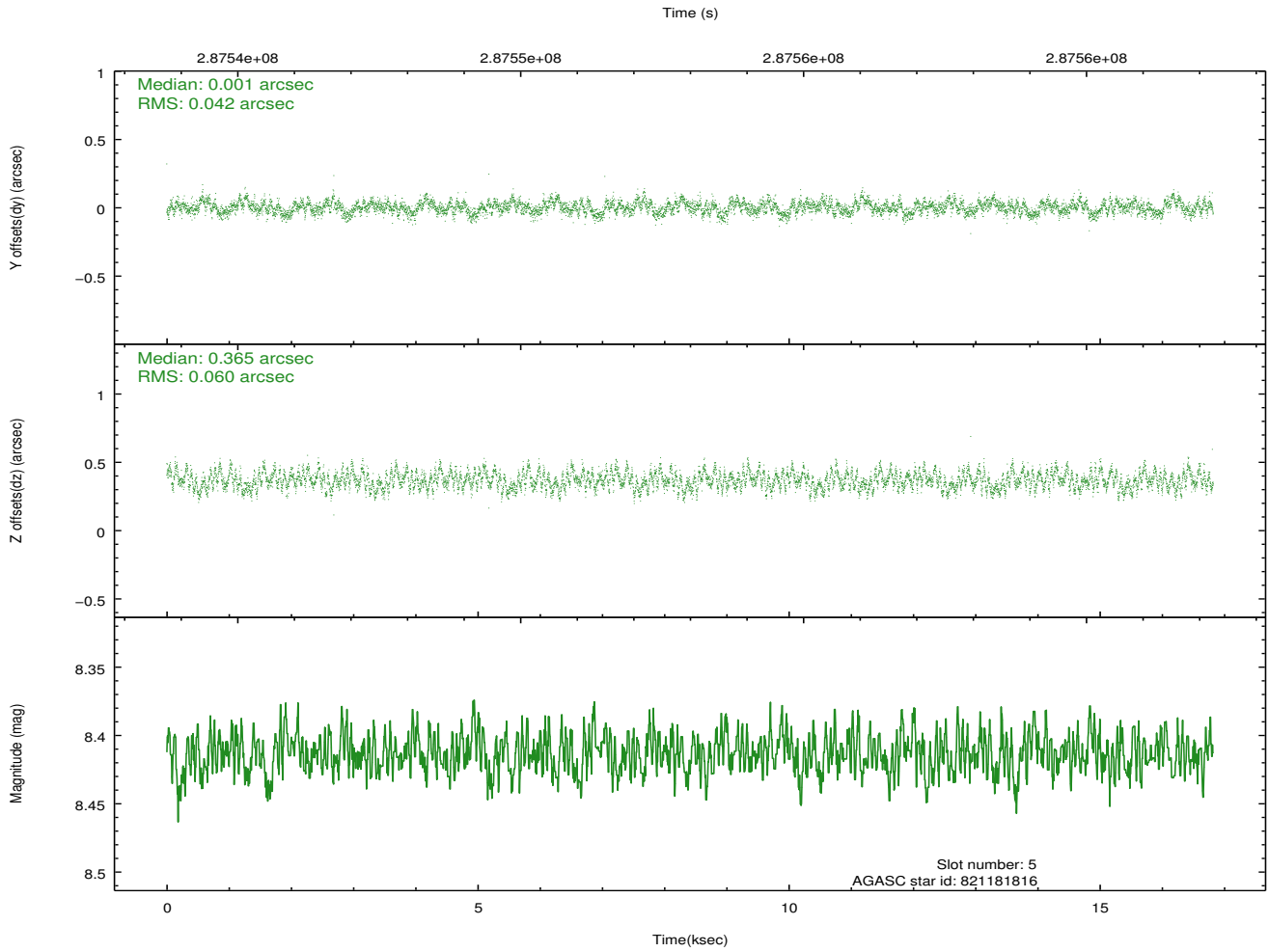
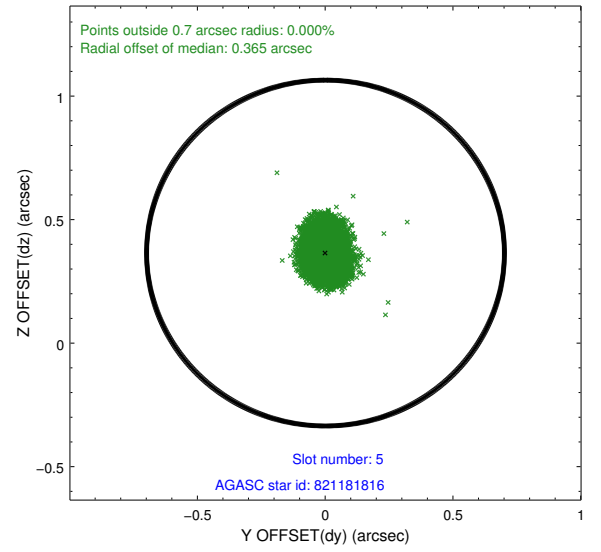
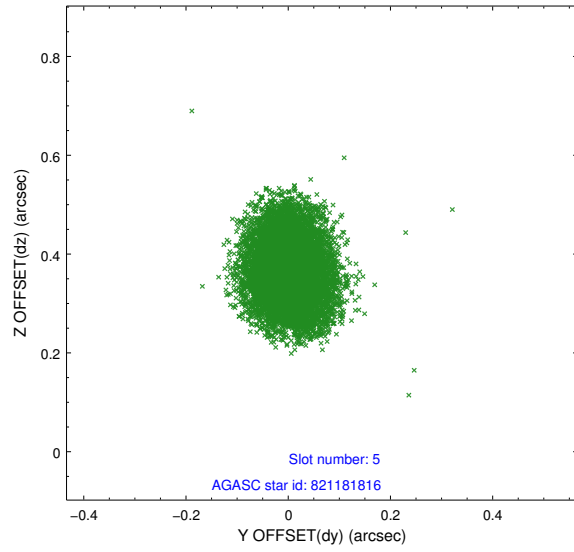
2.4.1 Slot 3



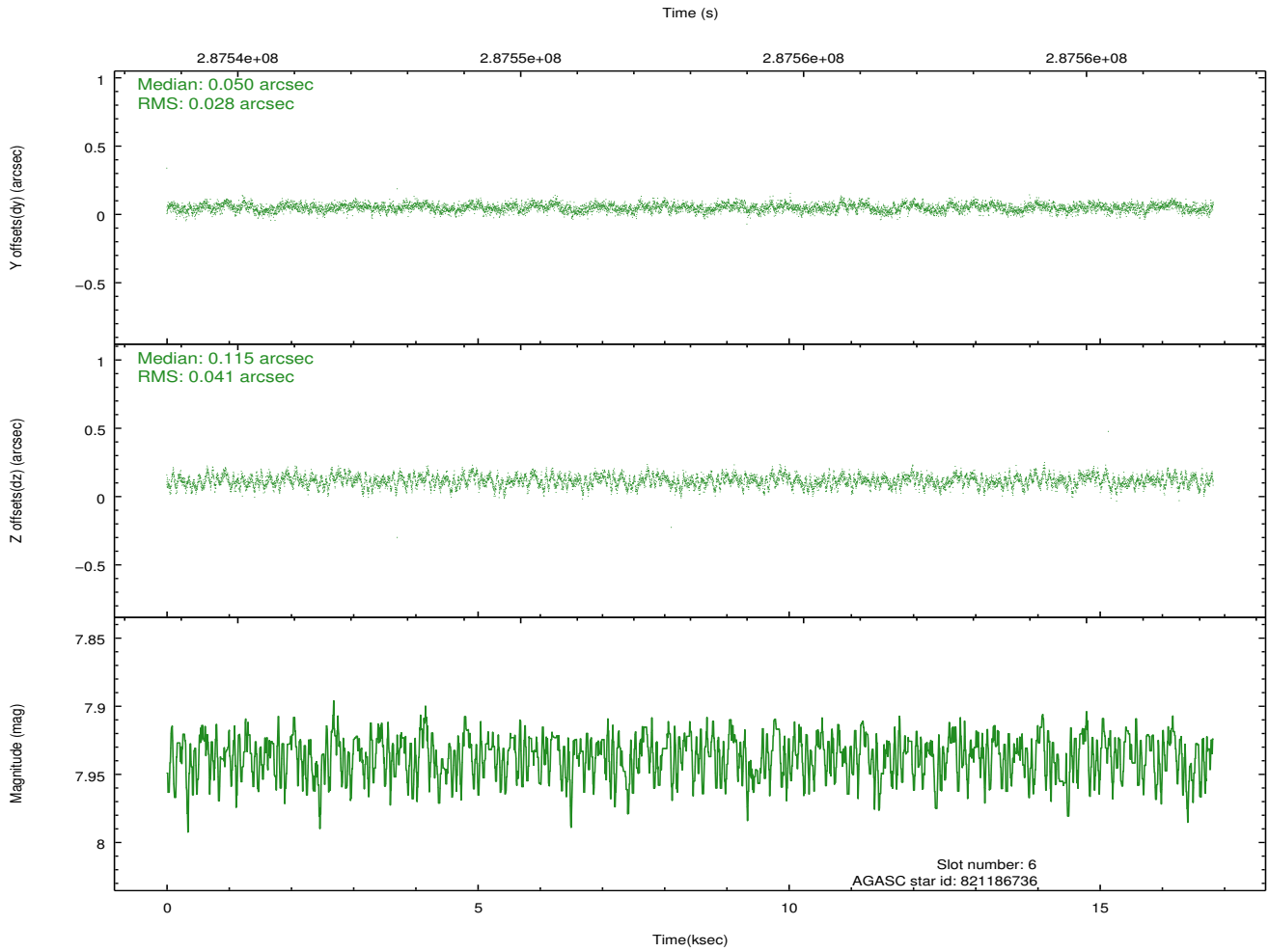
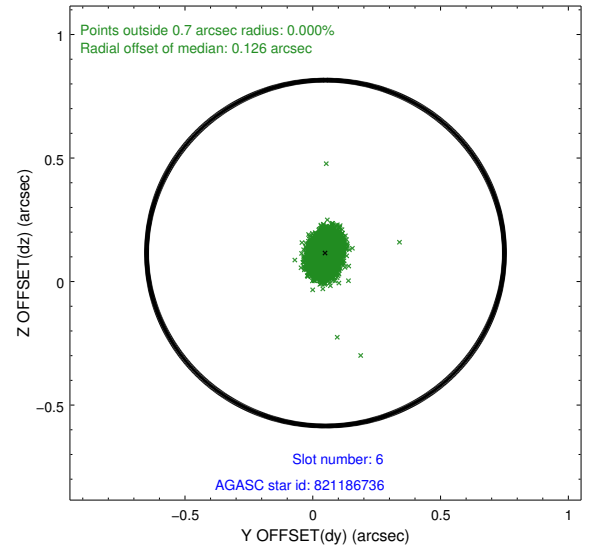
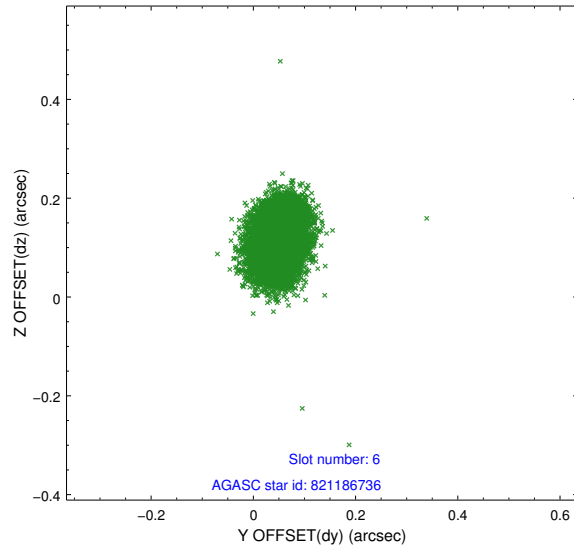
2.4.2 Slot 4



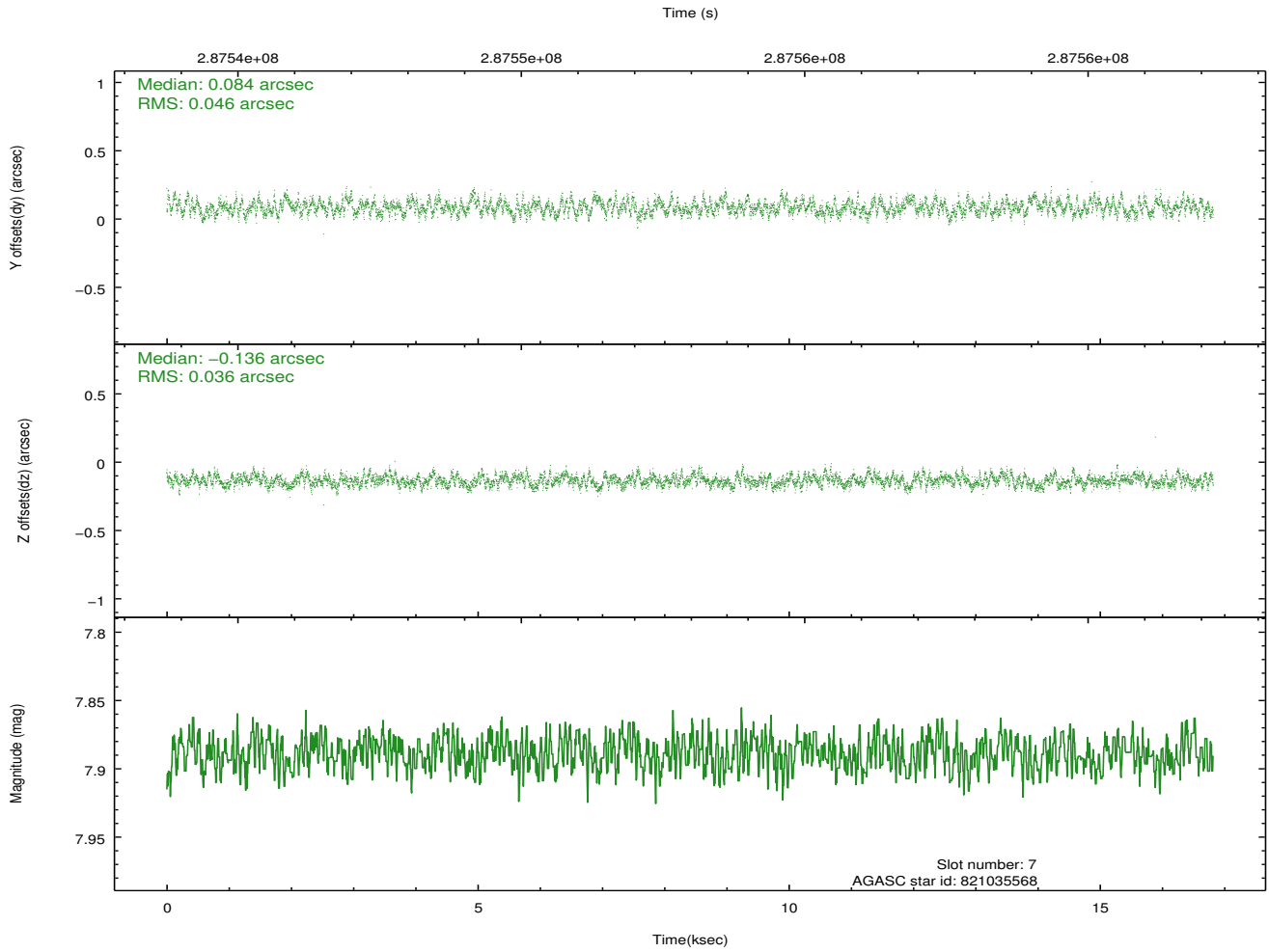
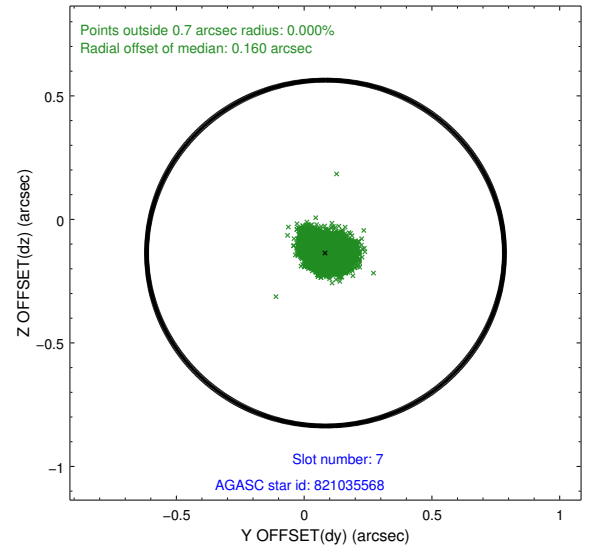
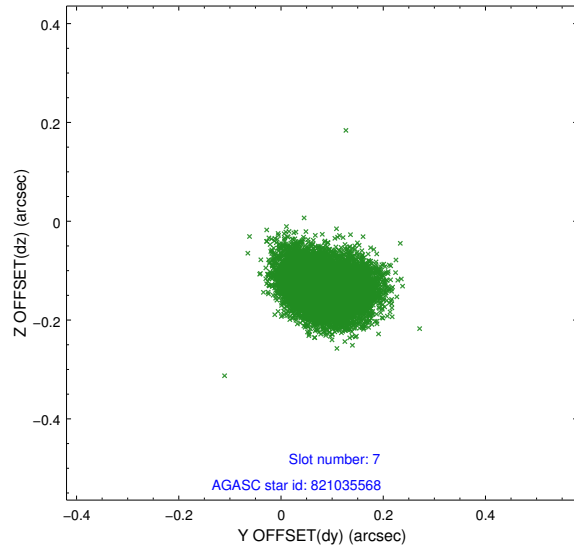
2.4.3 Slot 5



2.4.4 Slot 6

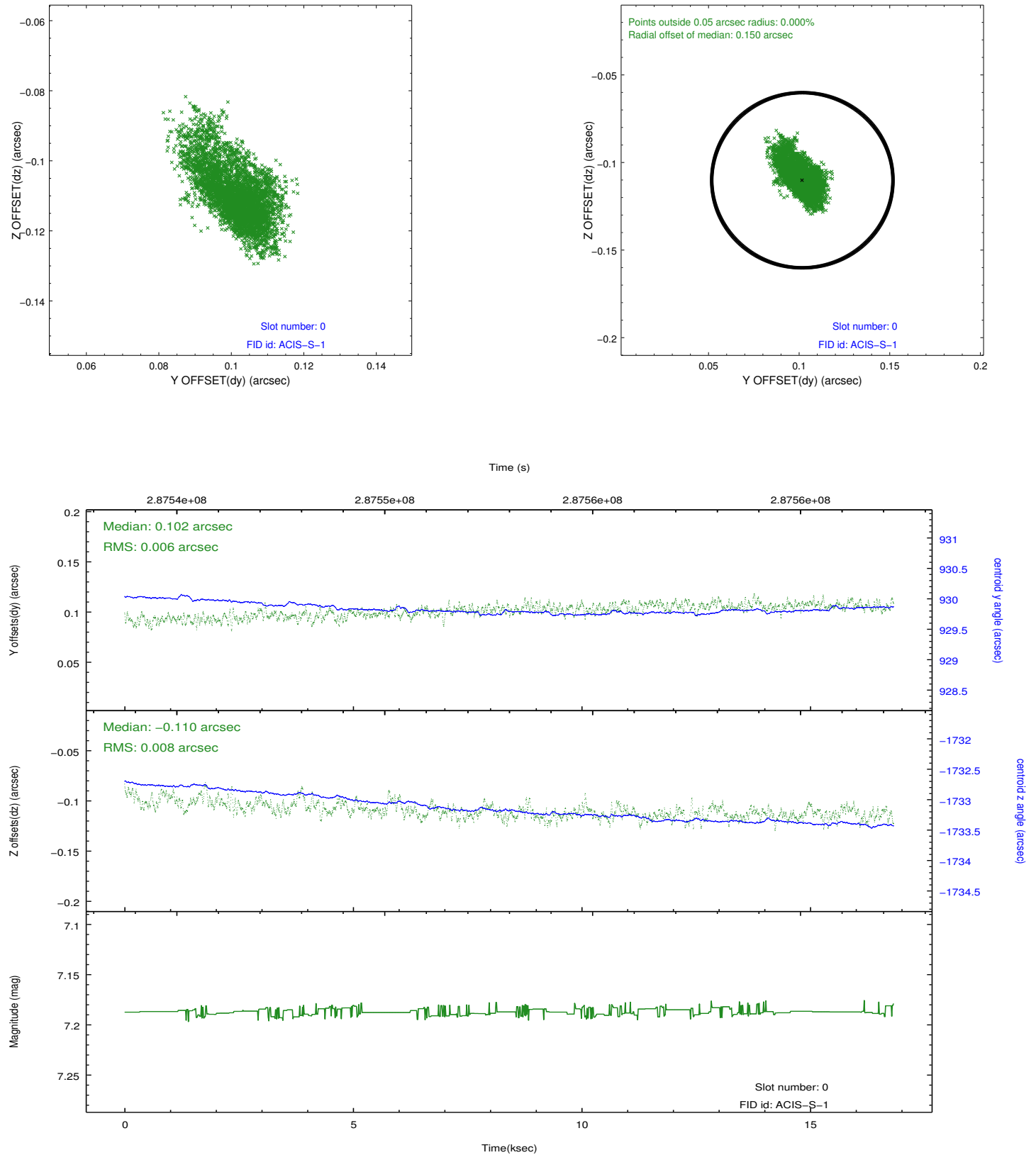


2.4.5 Slot 7

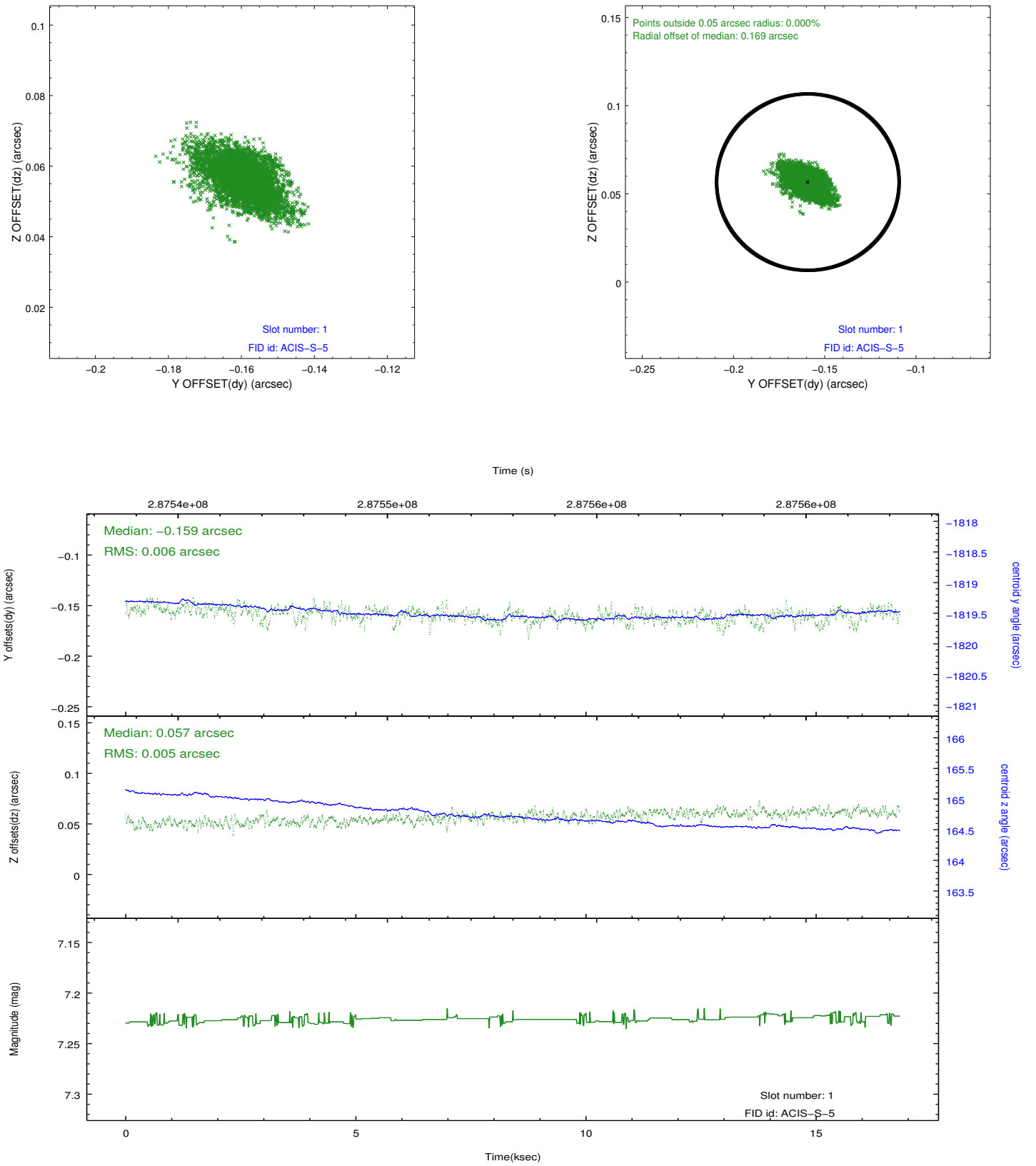


2.5 FID Slots

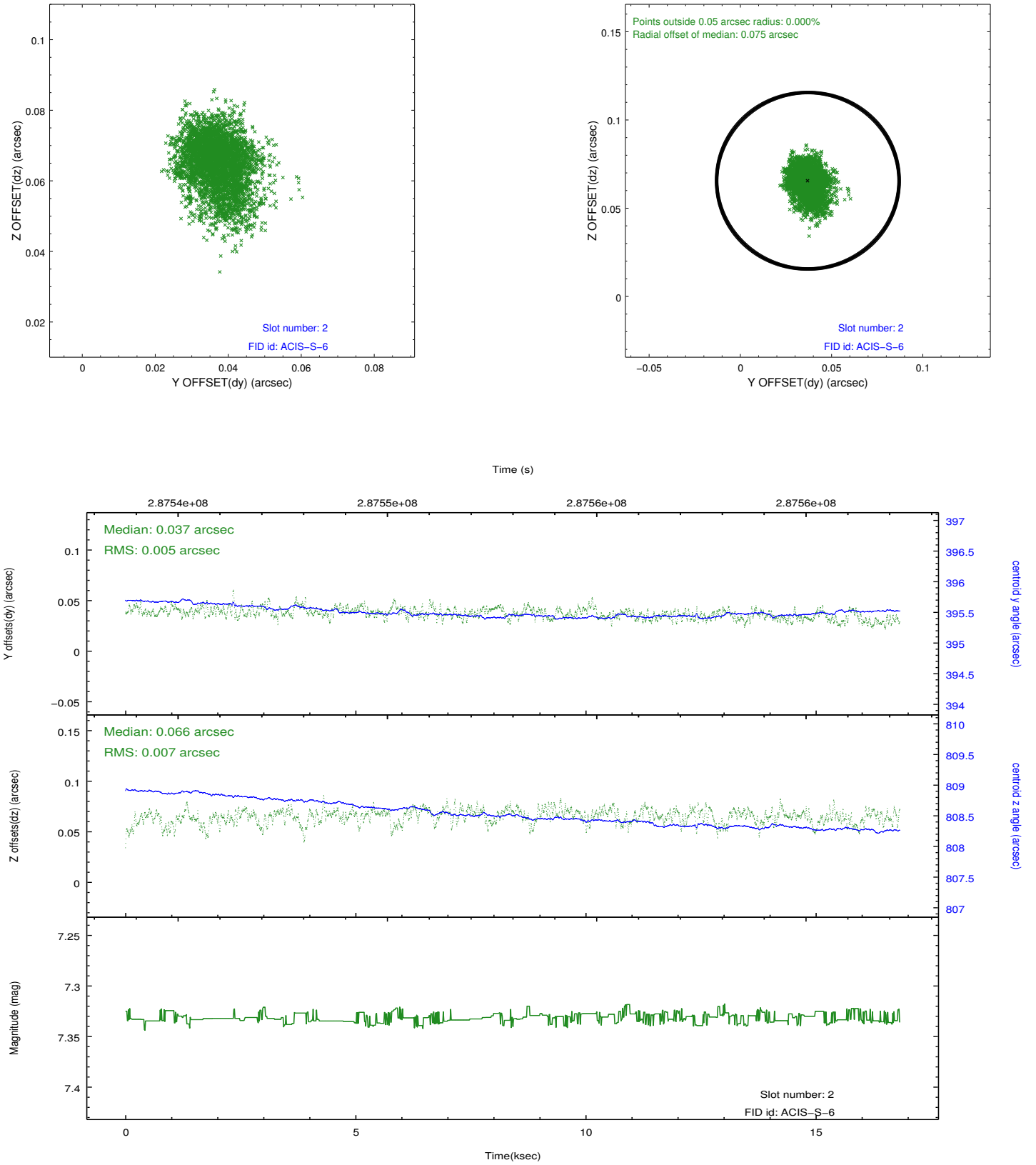
2.5.1 Slot 0



2.5.2 Slot 1



2.5.3 Slot 2



A Summary

A.1 Status

V&V Scientist	Beth Sundheim
V&V Date (YYYY-MM-DD)	2012.04.22
V&V Edition	1
V&V Disposition and Status	OK
V&V Charge Time	16.0447999

A.2 Comments