

V&V Reference Report

L2 ASCDS Version : 8.4.3.1

Observation 6578 - L2 Version 2
Chandra X-Ray Center

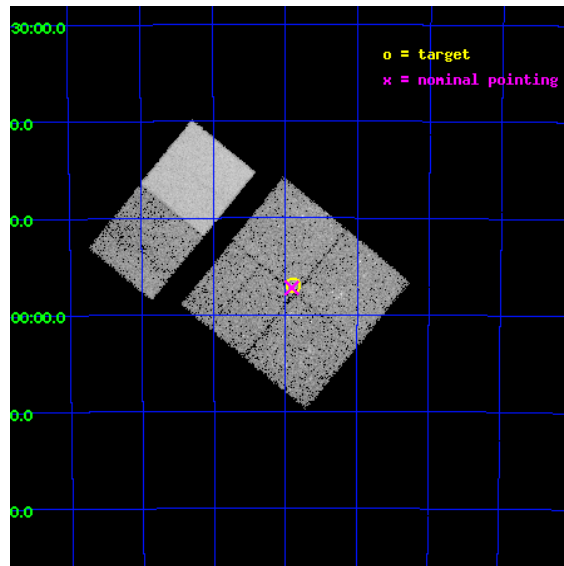
L2 Processing Date : Mar 30 2012

Contents

1	Front	2
2	OBI	3
2.1	OBI	3
2.1.1	Images	3
2.1.2	Bias	3
2.1.3	Parameters	4
2.1.4	Events	4
2.2	Compared Parameters	5
2.3	Aspect	6
2.4	Star Slots	9
2.4.1	Slot 3	9
2.4.2	Slot 4	10
2.4.3	Slot 5	11
2.4.4	Slot 6	12
2.4.5	Slot 7	13
2.5	FID Slots	14
2.5.1	Slot 0	14
2.5.2	Slot 1	15
2.5.3	Slot 2	16
A	Summary	17
A.1	Status	17
A.2	Comments	17

1 Front

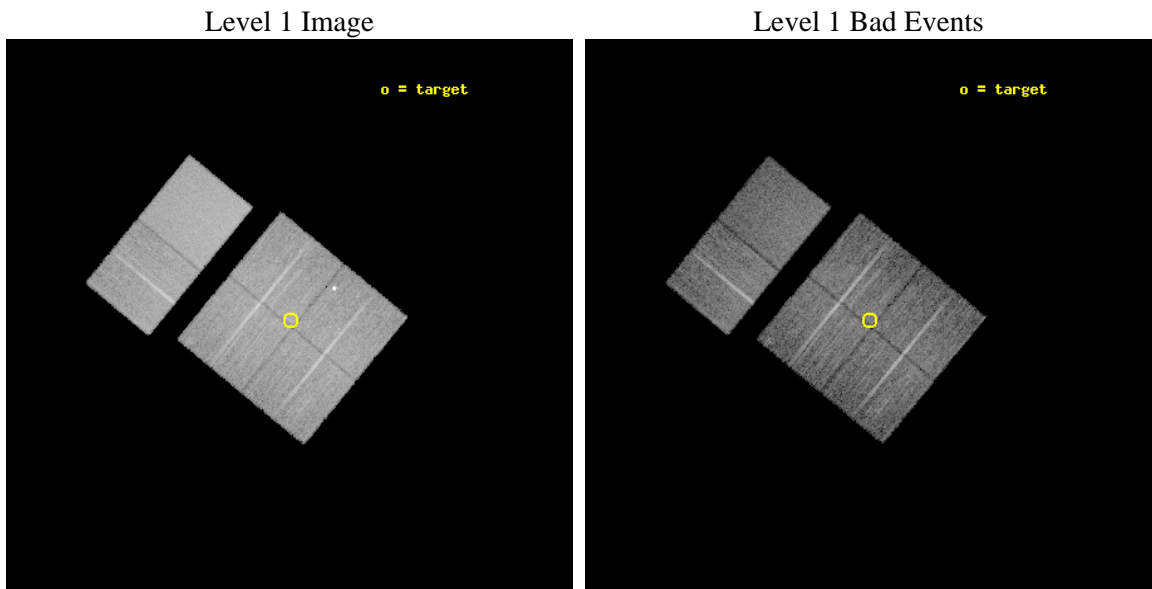
seq_num	400483	Sequence number
obs_id	6578	Observation id
title	X-ray Emission from Candidate Massive Star Clusters	Proposal title
observer	Professor Gordon Garmire	Principal investigator
object	DB2001 CL-123	Source name
dtcycle	0	
cycle	P	events from which exps? Prim/Second/Both
ra_targ	161.475	Observer's specified target RA [deg]
dec_targ	-59.949444	Observer's specified target Dec [deg]
ra_nom	161.47750115316	Nominal RA [deg]
dec_nom	-59.953874128726	Nominal Dec [deg]
roll_nom	309.36006404717	Nominal Roll [deg]
revision	2	Processing version of data
ontime	9954.9314237833	Sum of GTIs [s]
livetime	9828.8760879553	Livetime [s]
ontime0	9954.8083038032	Sum of GTIs [s]
ontime1	9954.8493437767	Sum of GTIs [s]
ontime2	9954.89038378	Sum of GTIs [s]
ontime3	9954.9314237833	Sum of GTIs [s]
ontime6	9955.0135037899	Sum of GTIs [s]
ontime7	9954.9724637866	Sum of GTIs [s]
l2events	120113	Number of level 2 events



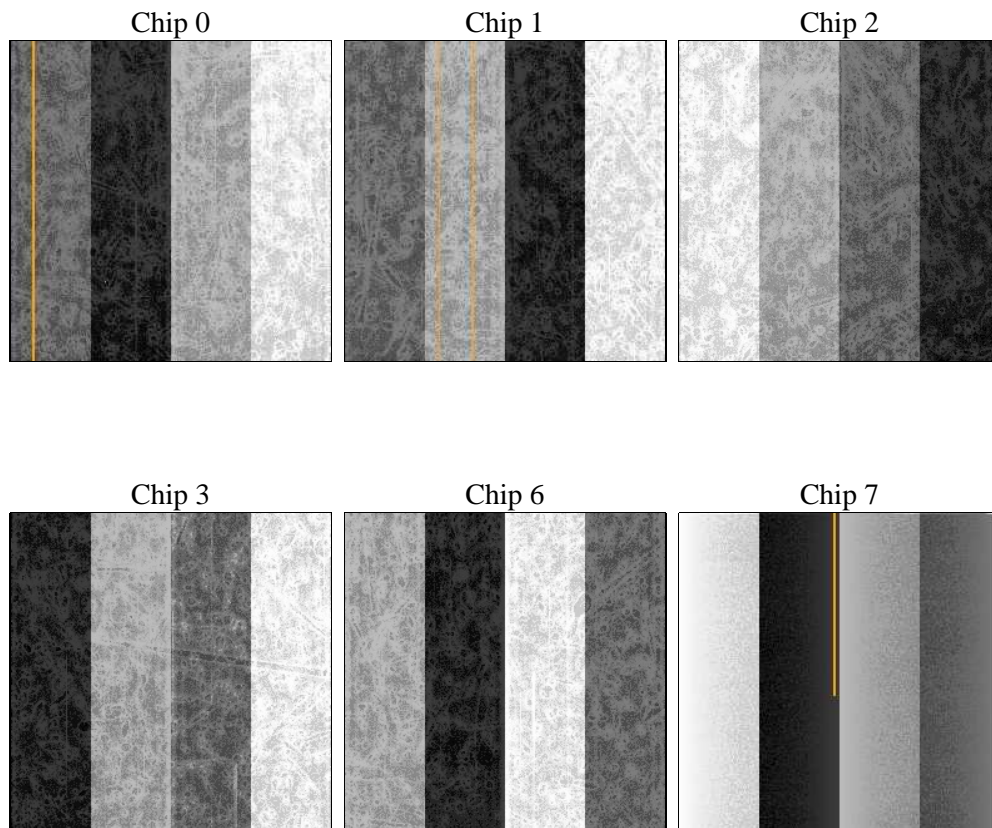
2 OBI

2.1 OBI

2.1.1 Images



2.1.2 Bias



2.1.3 Parameters

obi_num	0	Obi number	sched_exp_time	10000.000000	[s] Scheduled observation exposure time
ascdsver	8.4.3	Processing system revision	ontime	9954.9314237833	Sum of GTIs [s]
caldsver	4.4.8	 	ontime0	9954.8083038032	Sum of GTIs [s]
date	2012-03-30T05:06:43	Date and time of file creation	ontime1	9954.8493437767	Sum of GTIs [s]
revision	2	Processing version of data	ontime2	9954.89038378	Sum of GTIs [s]
			ontime3	9954.9314237833	Sum of GTIs [s]
			ontime6	9955.0135037899	Sum of GTIs [s]
			ontime7	9954.9724637866	Sum of GTIs [s]
			l1events	567921	Number of level 1 events

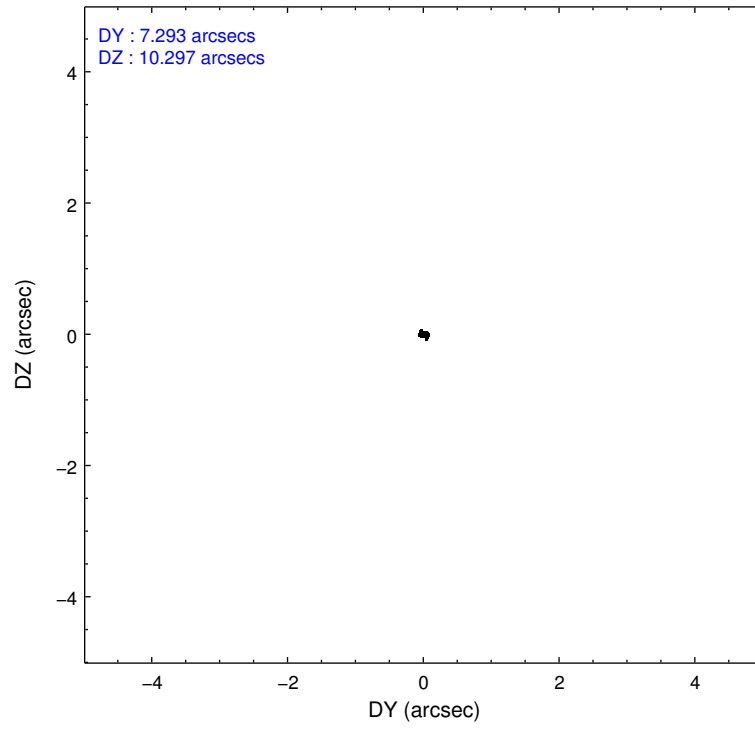
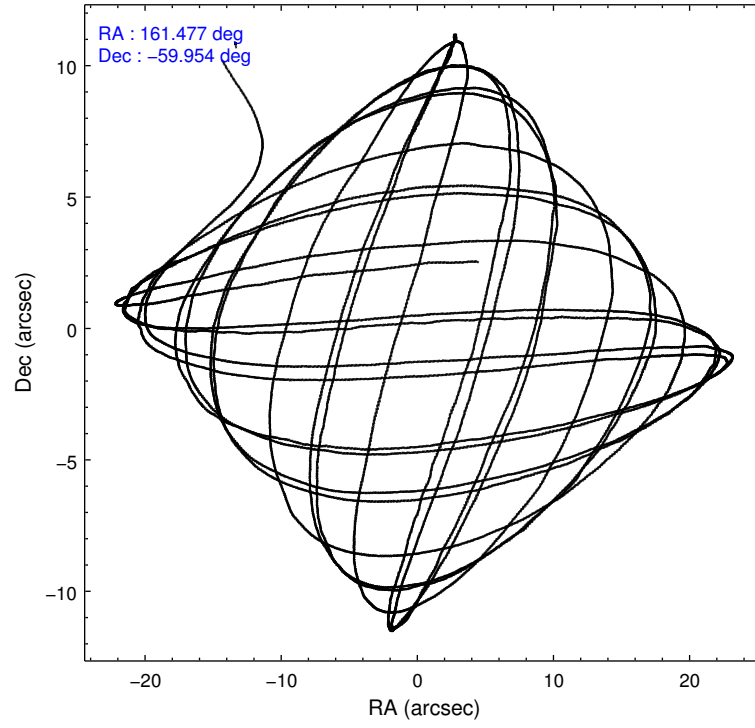
2.1.4 Events

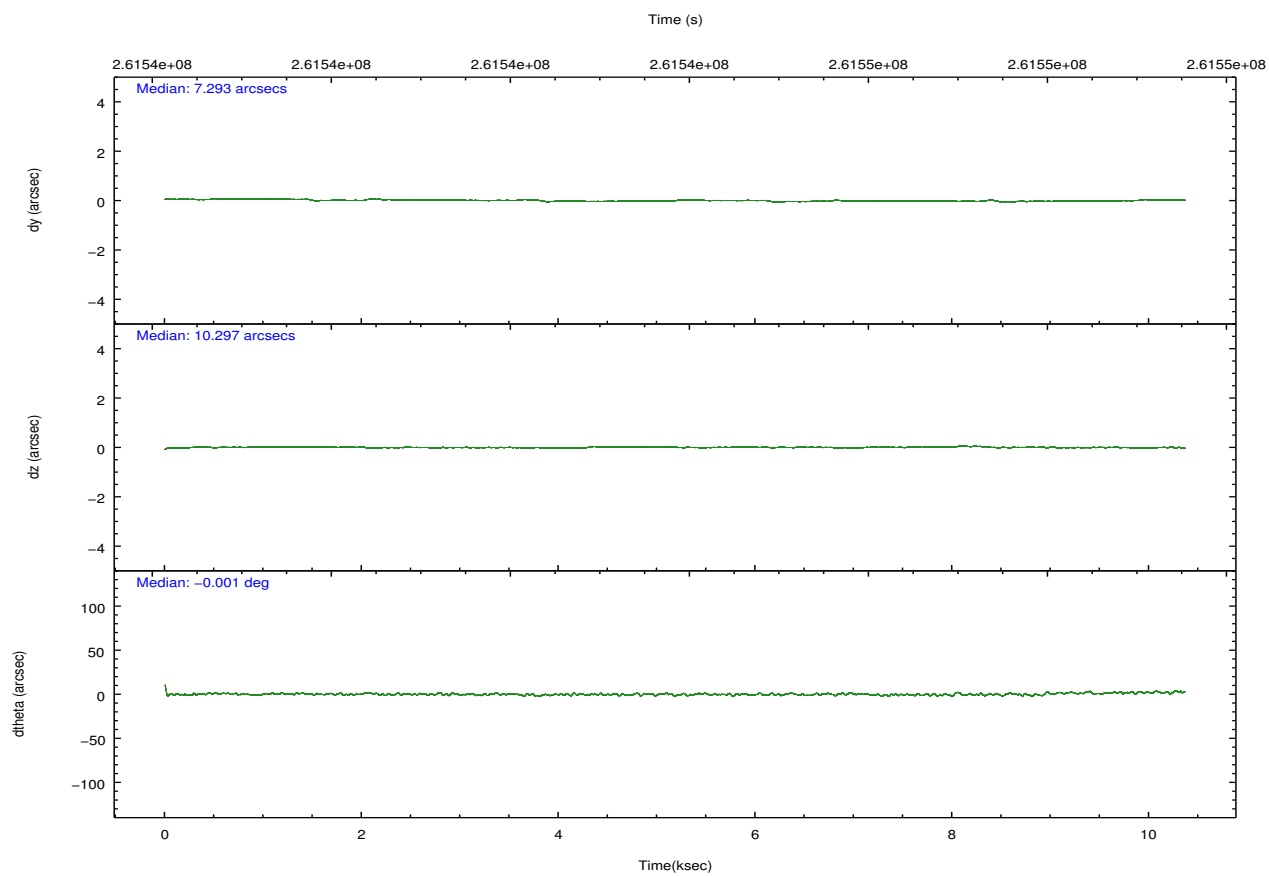
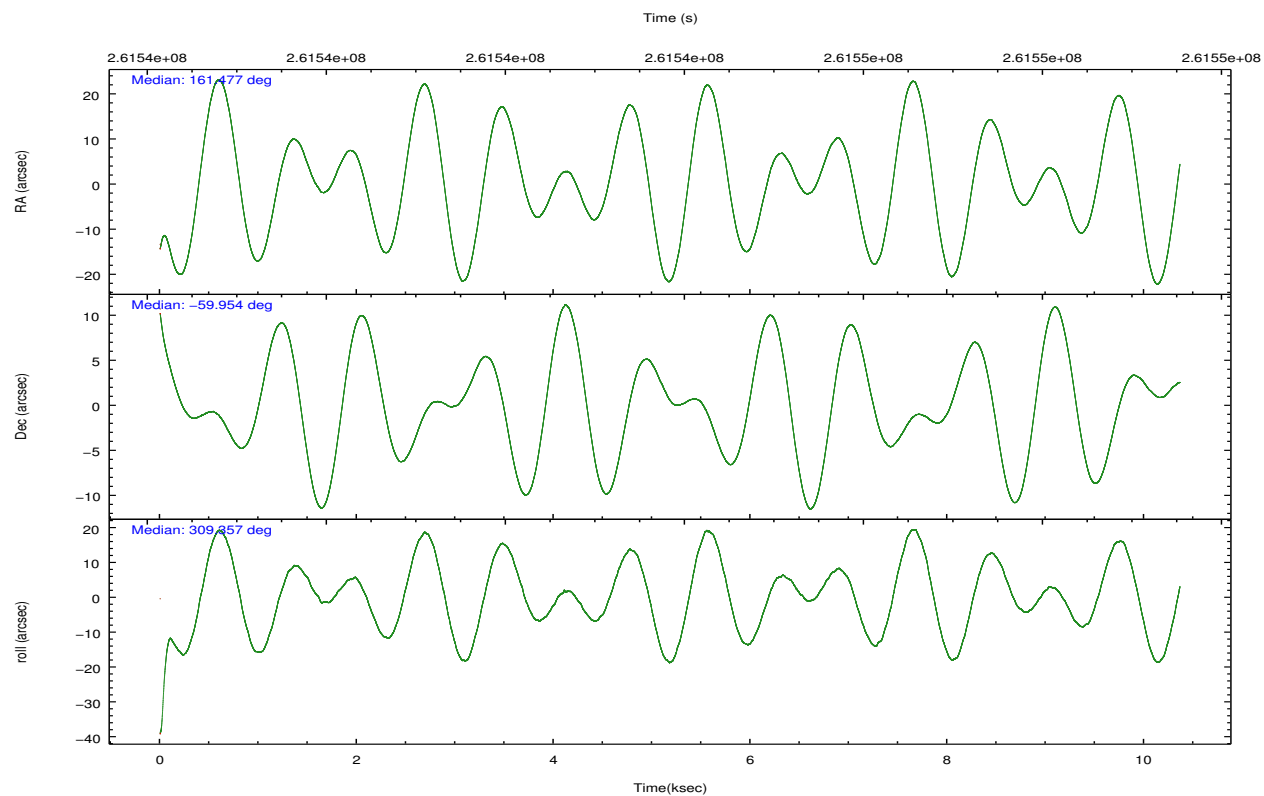
	ccd 0	ccd 1	ccd 2	ccd 3	ccd 6	ccd 7		ccd 0	ccd 1	ccd 2	ccd 3	ccd 6	ccd 7
level 1 events	81153	89123	89119	89972	93714	124840	grade 0 events	7445	9536	7754	9880	6409	6579
rejected events	67424	69198	75320	73543	80631	69158		9%	10%	8%	10%	6%	5%
rejected %	83%	77%	84%	81%	86%	55%	grade 1 events	73	69	71	82	52	124
								0%	0%	0%	0%	0%	0%
							grade 2 events	2462	5868	2398	2460	2412	11805
								3%	6%	2%	2%	2%	9%
							grade 3 events	1043	1162	960	1107	1045	5036
								1%	1%	1%	1%	1%	4%
							grade 4 events	1008	1135	1000	1120	1024	5095
								1%	1%	1%	1%	1%	4%
							grade 5 events	3549	3637	3230	4034	4033	11470
								4%	4%	3%	4%	4%	9%
							grade 6 events	1774	2230	1694	1866	2201	27190
								2%	2%	1%	2%	2%	21%
							grade 7 events	63799	65486	72012	69423	76538	57541
								78%	73%	80%	77%	81%	46%

2.2 Compared Parameters

Parameter	Planned	Actual	Parameter	Planned	Actual
Instrument	ACIS	ACIS	Obspar format version number	7	7
Detector	ACIS-012367	ACIS-012367	Obspar file type	PREDICTED	ACTUAL
Grating	NONE	NONE	Obspar update status	NONE	UPDATED
Data mode	FAINT	FAINT	Number of optional ACIS chips dropped	0	0
Observation mode	POINTING	POINTING	On-chip summing requested	N	N
[deg] Pointing RA	161.426369	161.4775011531636	Subarray requested	NONE	NONE
[deg] Pointing Dec	-59.944338	-59.95387412872635	Alternating exposures requested	N	N
[deg] Pointing Roll	309.107148	309.360064047169	[s] Primary exposure time	0.000000	3.2
[mm] SIM focus pos	-0.782348	-0.7809083437167272			
[mm] SIM defocus	0	0.001439871863259334			
[mm] SIM translation stage pos	-233.592463	-233.5874344608287			
[mm] SIM translation stage offset	0	-0.005018542100998502			
[s] Observation start time (MET)	261539027.184000	261537976.70016			
Observation start date	2006-04-16T01:42:42	2006-04-16T01:26:16			
[s] Observation end time (MET)	261549027.184000	261550333.07574			
Observation end date	2006-04-16T04:29:22	2006-04-16T04:52:13			
Read mode	TIMED	TIMED			

2.3 Aspect



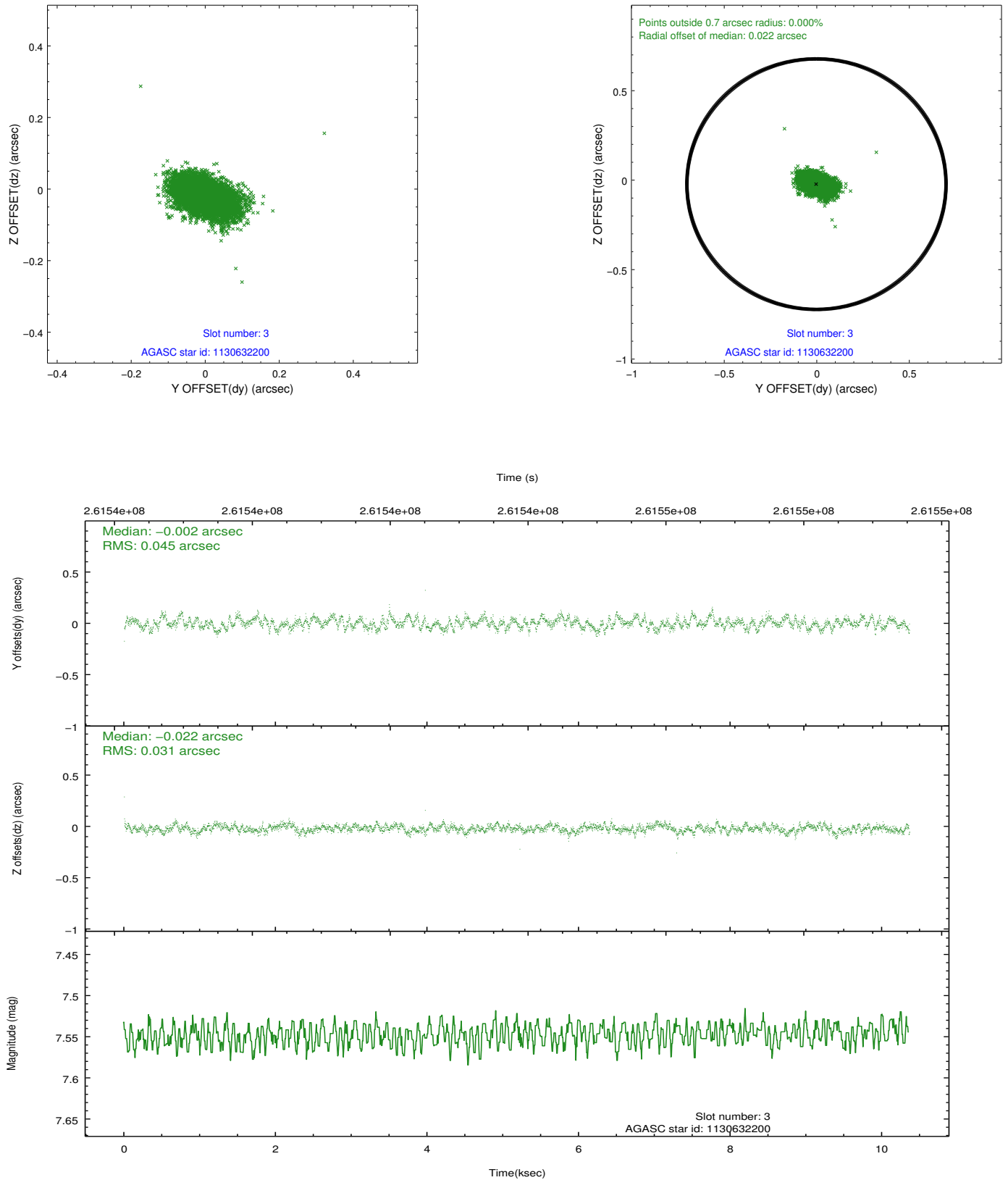


Slot Statistics

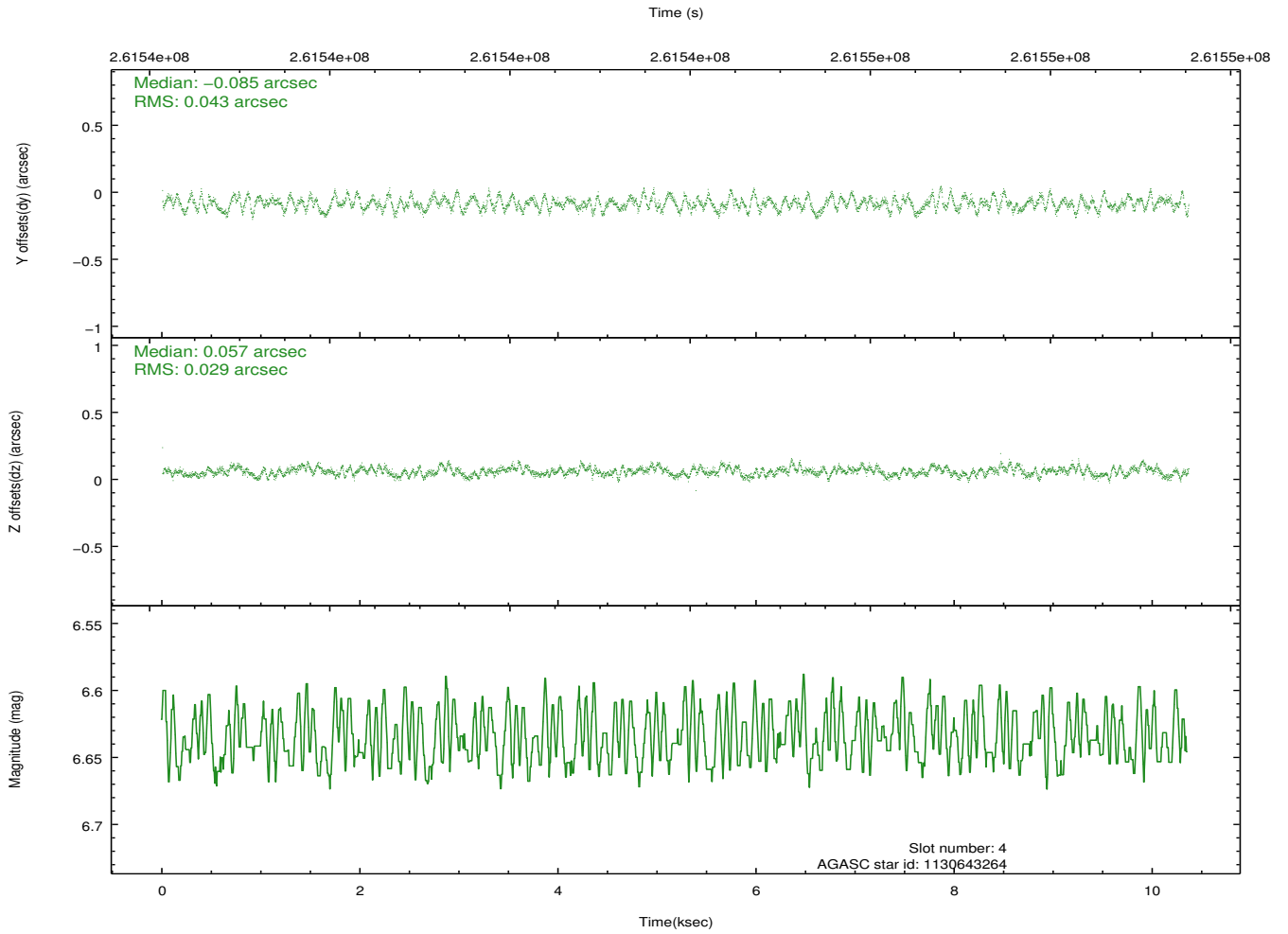
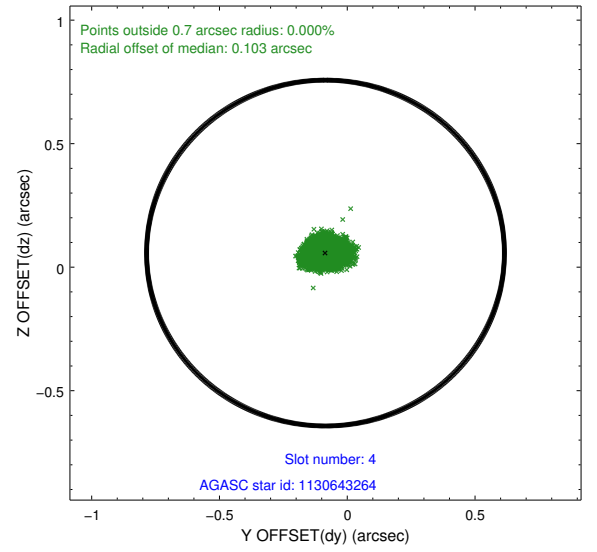
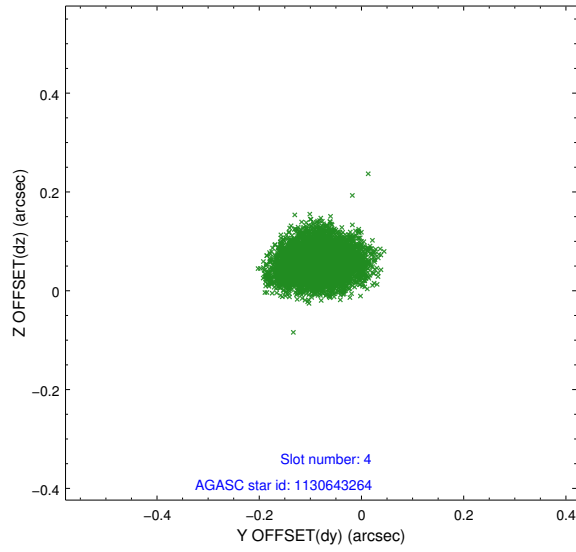
slot	status	id	mag	n_pts	med_dy	med_dz	dr1	dr2	ra	dec	mean_y	mean_z
0	FID	ACIS-I-1	7.25	2528	-0.059	0.057	0.009	0.015	0.000000	0.000000	932.31	-833.73
1	FID	ACIS-I-2	7.15	2528	-0.136	-0.079	0.008	0.013	0.000000	0.000000	-761.58	-840.53
2	FID	ACIS-I-4	7.18	2528	0.097	0.090	0.007	0.013	0.000000	0.000000	2152.15	1065.83
3	GUIDE	1130632200	7.55	5056	-0.002	-0.022	0.057	0.097	161.433843	-59.407820	-1489.81	1229.03
4	GUIDE	1130643264	6.64	5055	-0.085	0.057	0.057	0.088	160.322990	-59.676912	-1998.98	-959.03
5	GUIDE	1174020728	8.16	5055	0.006	-0.072	0.062	0.095	162.364714	-60.294672	2043.70	495.90
6	GUIDE	1174025248	8.80	5052	0.081	0.094	0.086	0.135	161.784801	-60.573378	2159.38	-937.12
7	GUIDE	1130640672	8.29	5053	-0.008	-0.063	0.107	0.162	162.096044	-59.540805	-350.90	1860.66

2.4 Star Slots

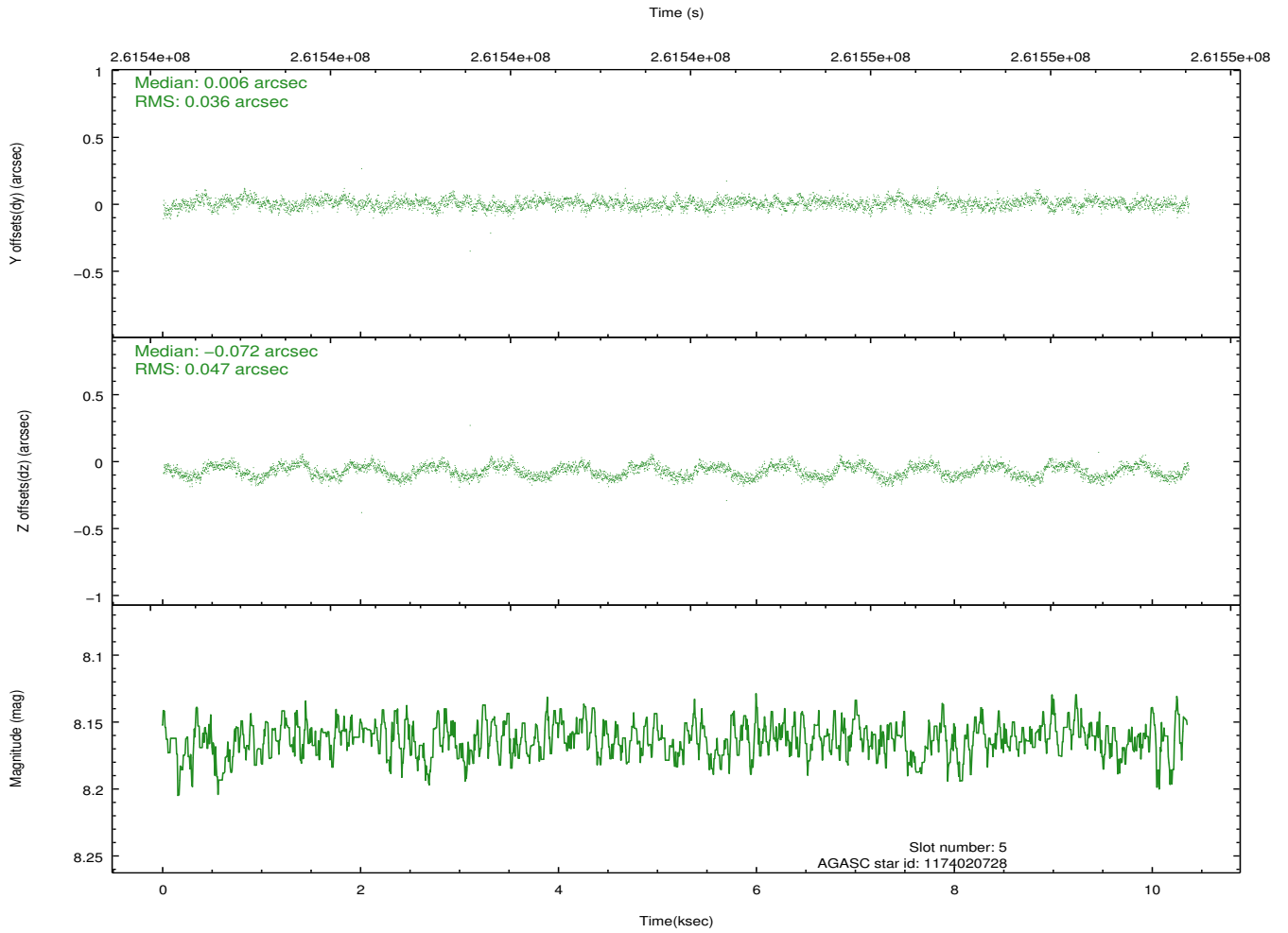
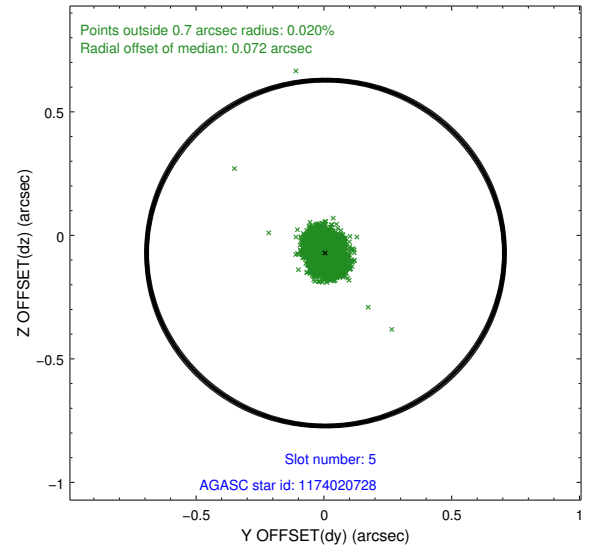
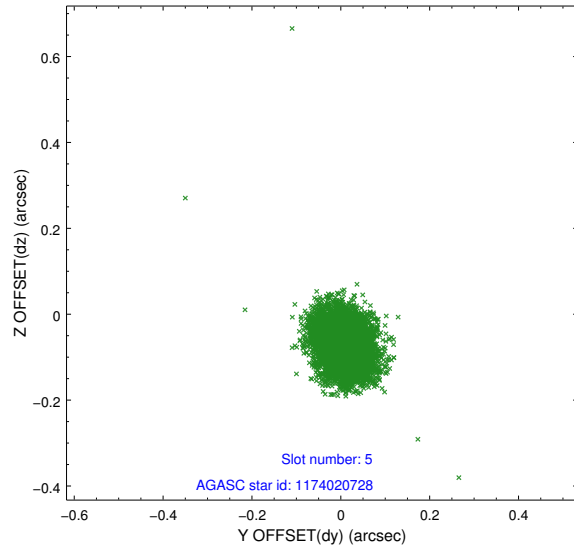
2.4.1 Slot 3



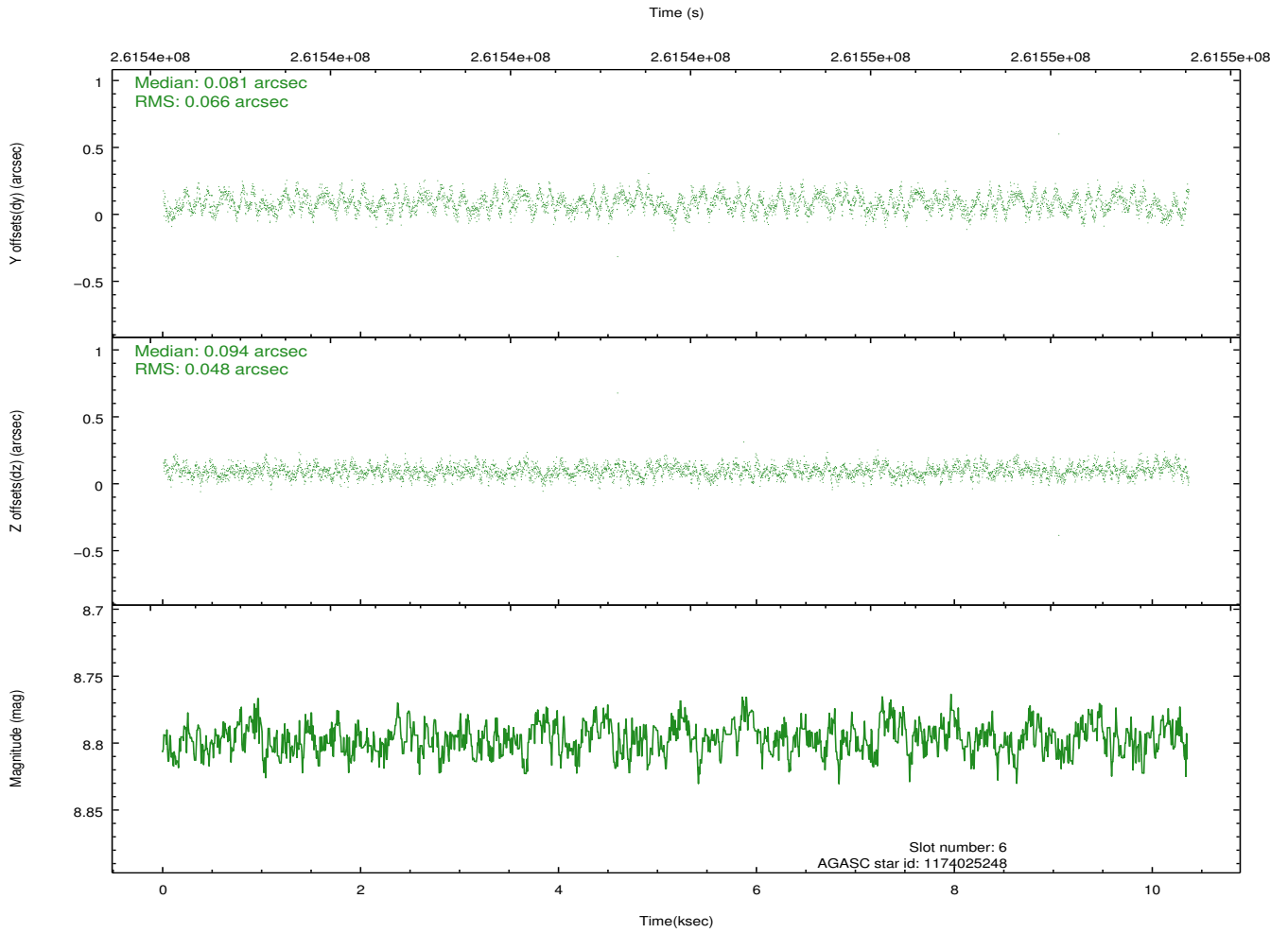
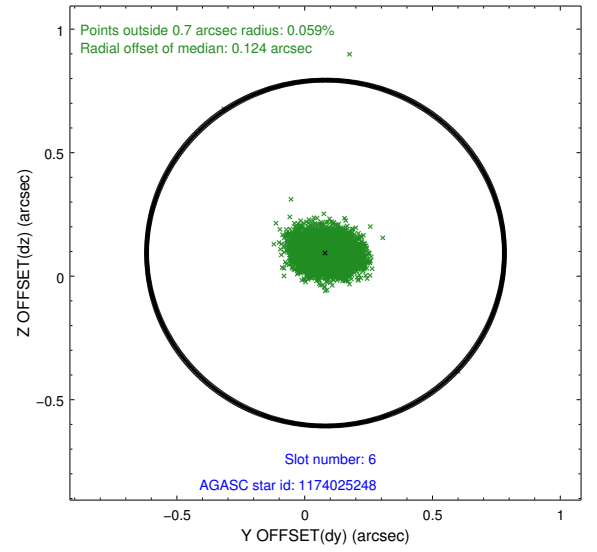
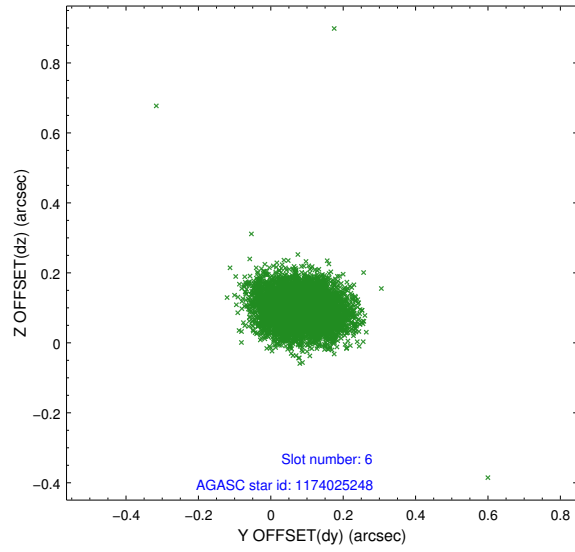
2.4.2 Slot 4



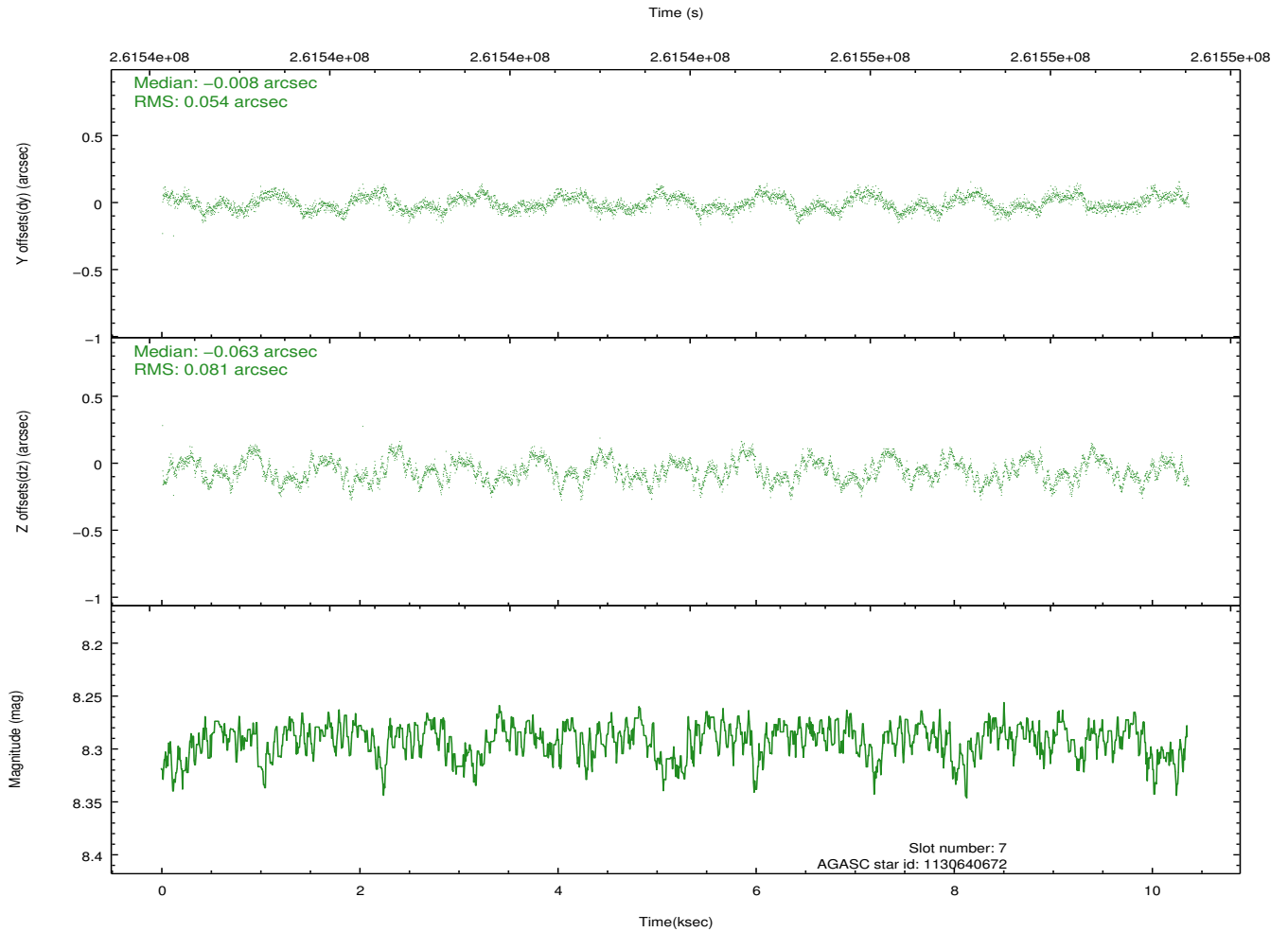
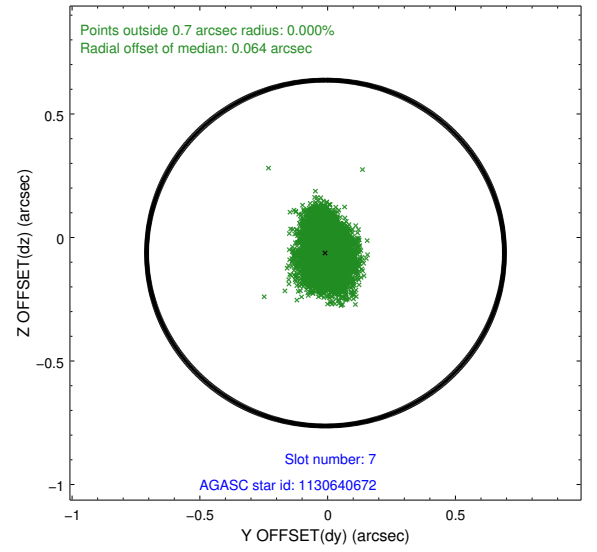
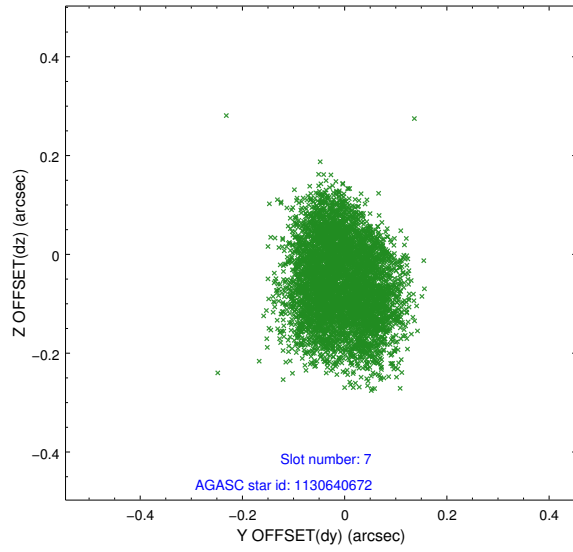
2.4.3 Slot 5



2.4.4 Slot 6

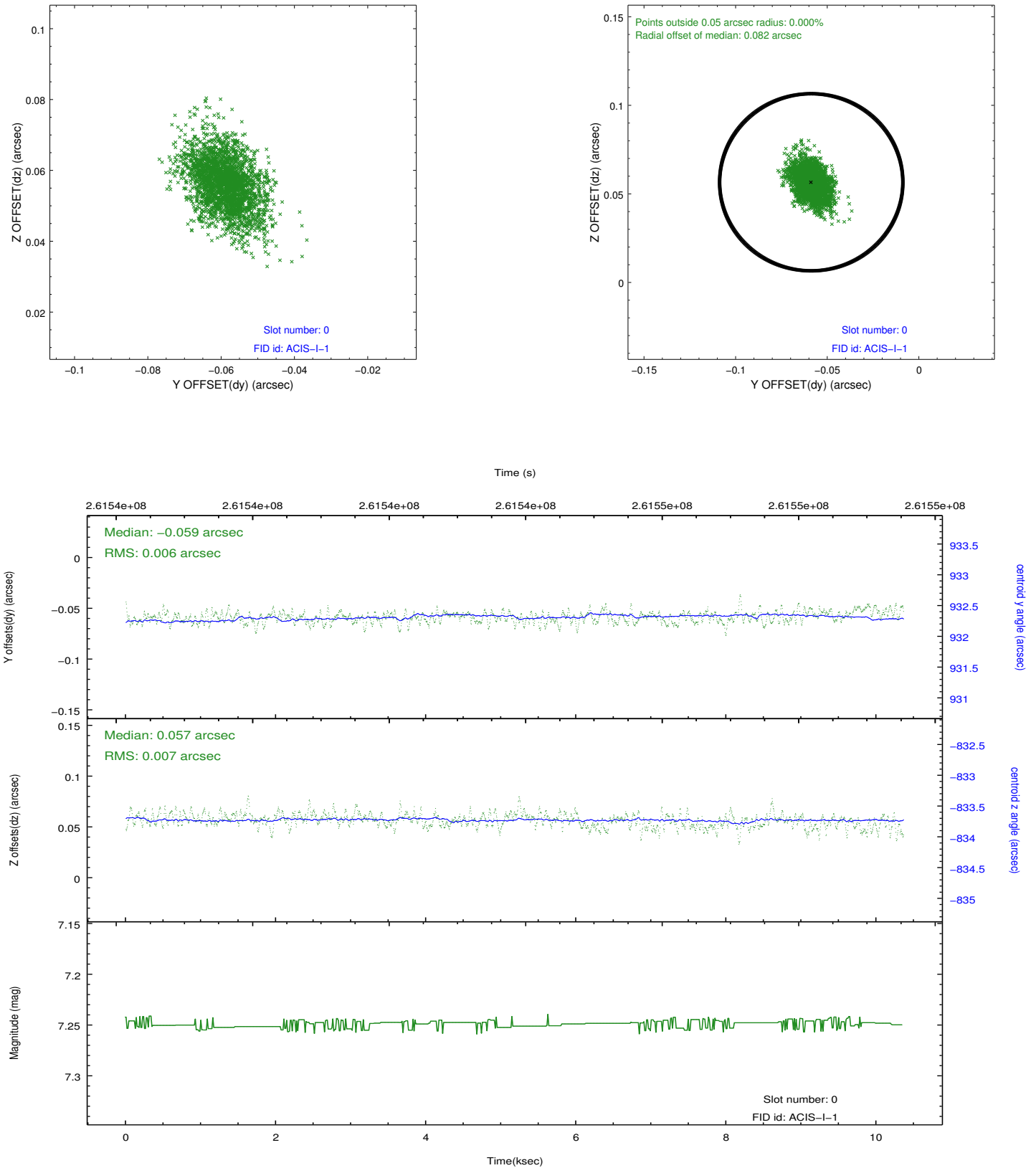


2.4.5 Slot 7

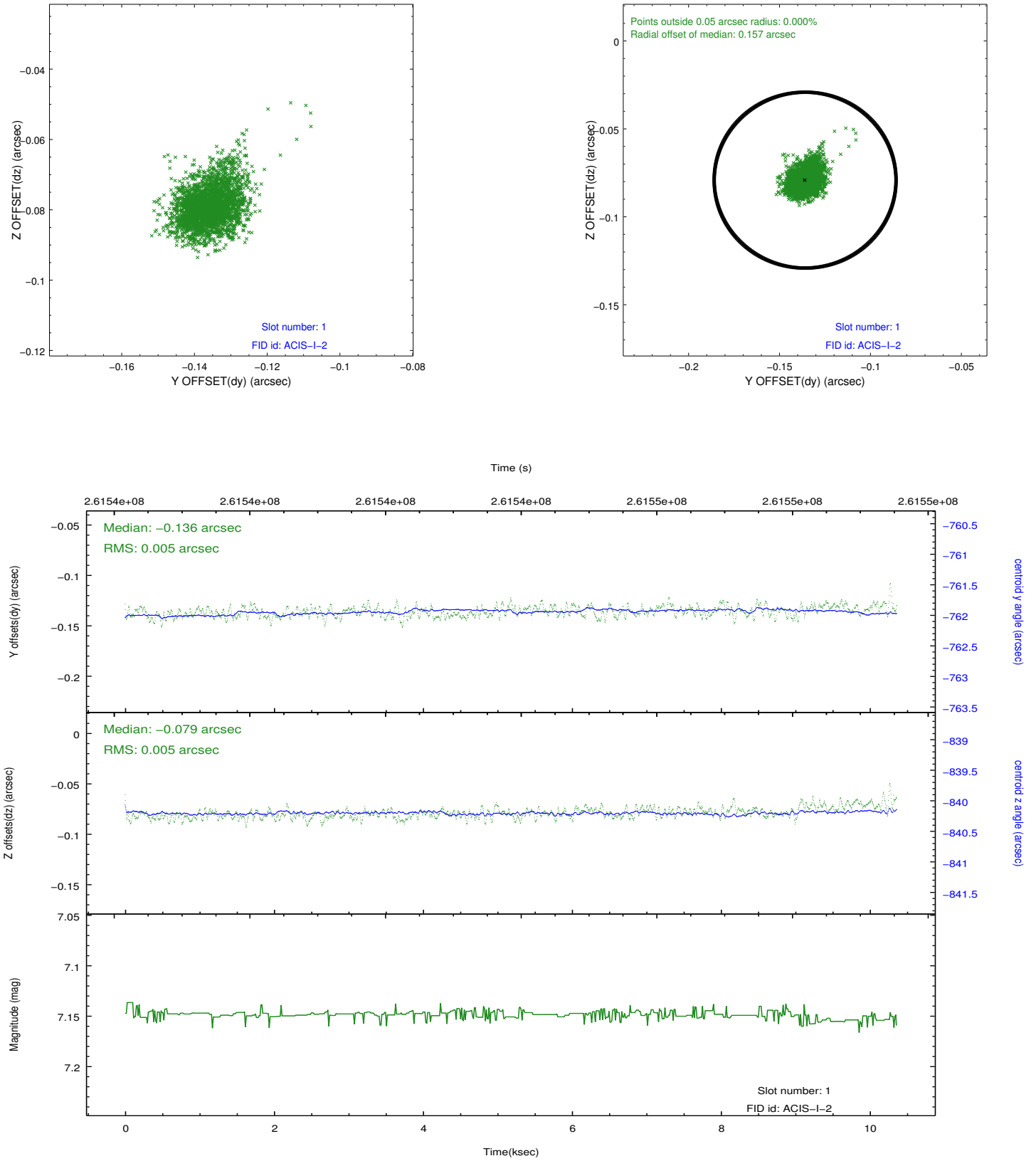


2.5 FID Slots

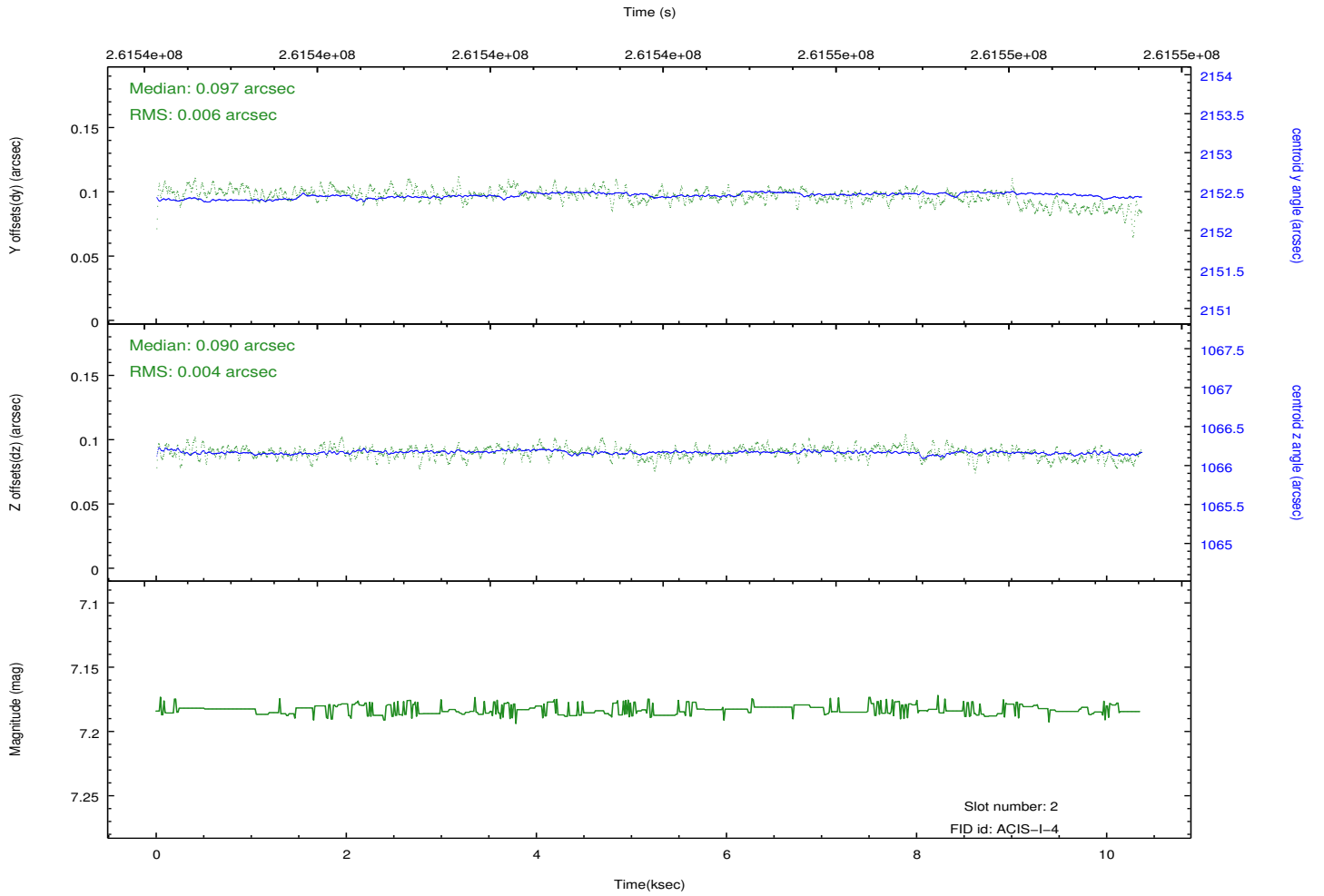
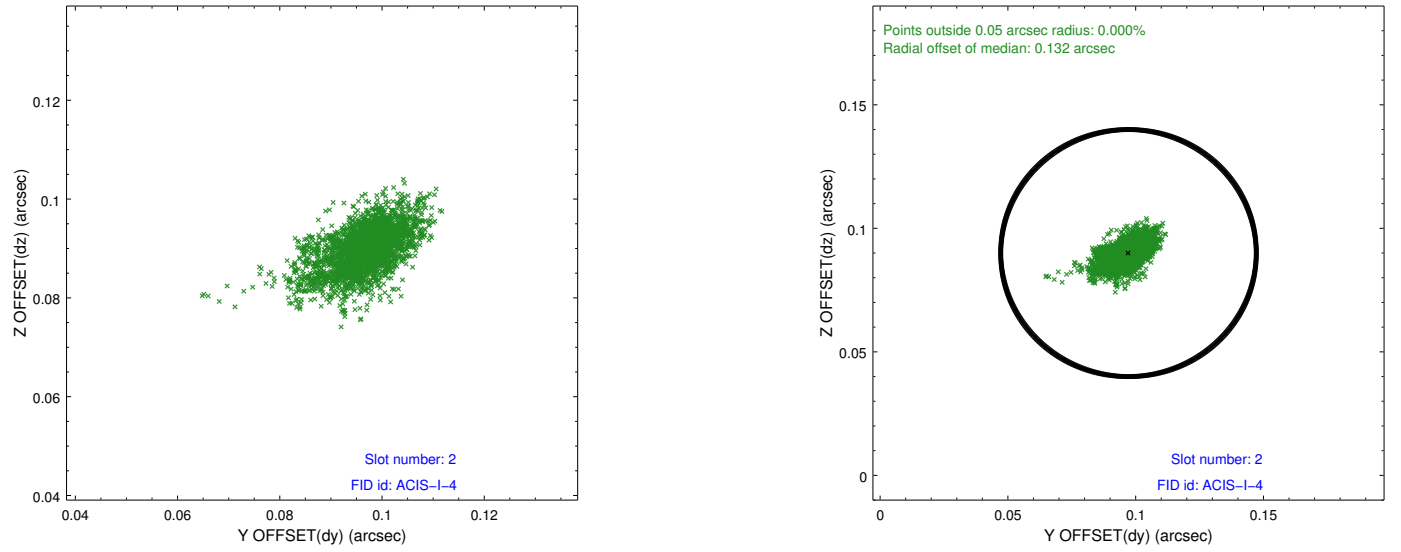
2.5.1 Slot 0



2.5.2 Slot 1



2.5.3 Slot 2



A Summary

A.1 Status

V&V Scientist	Jen Lauer
V&V Date (YYYY-MM-DD)	2012.03.30
V&V Edition	1
V&V Disposition and Status	OK
V&V Charge Time	9.95519996

A.2 Comments