

V&V Reference Report

L2 ASCDS Version : 8.4.3

Observation 6577 - L2 Version 2
Chandra X-Ray Center

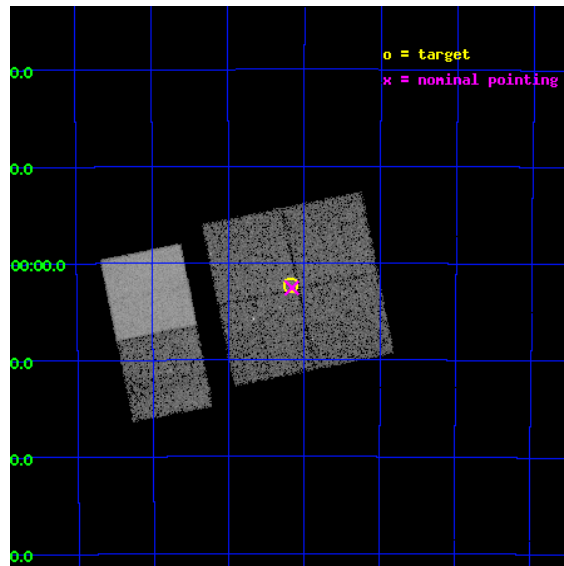
L2 Processing Date : Apr 2 2012

Contents

1	Front	2
2	OBI	3
2.1	OBI	3
2.1.1	Images	3
2.1.2	Bias	3
2.1.3	Parameters	4
2.1.4	Events	4
2.2	Compared Parameters	5
2.3	Aspect	6
2.4	Star Slots	9
2.4.1	Slot 3	9
2.4.2	Slot 4	10
2.4.3	Slot 5	11
2.4.4	Slot 6	12
2.4.5	Slot 7	13
2.5	FID Slots	14
2.5.1	Slot 0	14
2.5.2	Slot 1	15
2.5.3	Slot 2	16
A	Summary	17
A.1	Status	17
A.2	Comments	17

1 Front

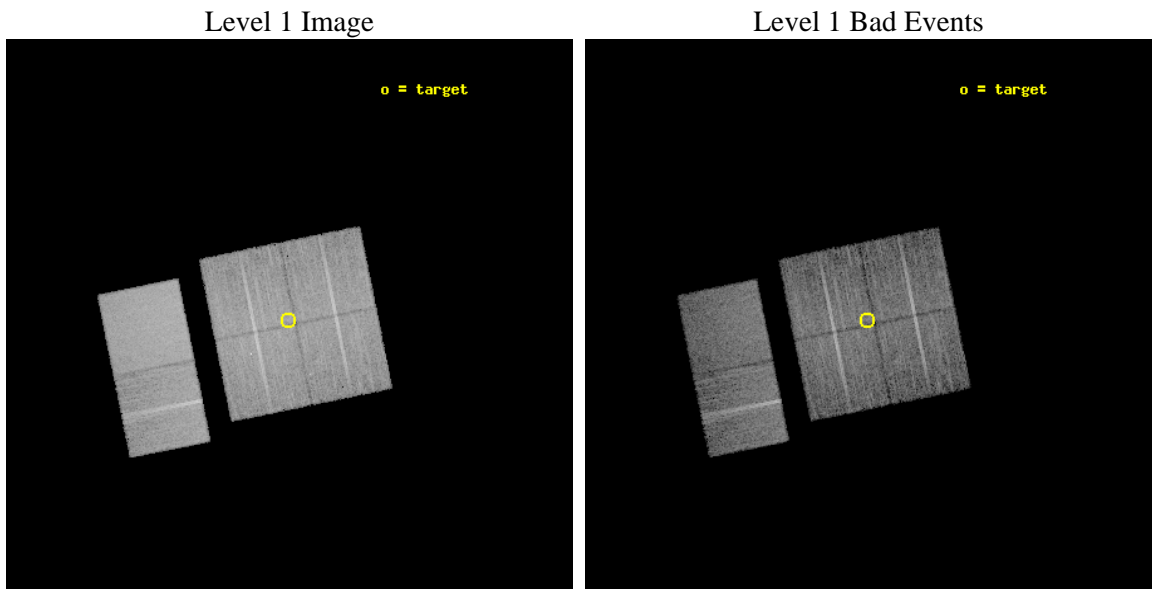
seq_num	400482	Sequence number
obs_id	6577	Observation id
title	X-ray Emission from Candidate Massive Star Clusters	Proposal title
observer	Professor Gordon Garmire	Principal investigator
object	G284.0-0.9	Source name
dtcycle	0	
cycle	P	events from which exps? Prim/Second/Both
ra_targ	154.795833	Observer's specified target RA [deg]
dec_targ	-58.039167	Observer's specified target Dec [deg]
ra_nom	154.7909211922	Nominal RA [deg]
dec_nom	-58.042981830904	Nominal Dec [deg]
roll_nom	258.53675039173	Nominal Roll [deg]
revision	2	Processing version of data
ontime	9755.3781083524	Sum of GTIs [s]
livetime	9631.849636761	Livetime [s]
ontime0	9755.2549883723	Sum of GTIs [s]
ontime1	9755.2960283458	Sum of GTIs [s]
ontime2	9755.3370683491	Sum of GTIs [s]
ontime3	9755.3781083524	Sum of GTIs [s]
ontime6	9755.460188359	Sum of GTIs [s]
ontime7	9755.4191284478	Sum of GTIs [s]
l2events	98320	Number of level 2 events



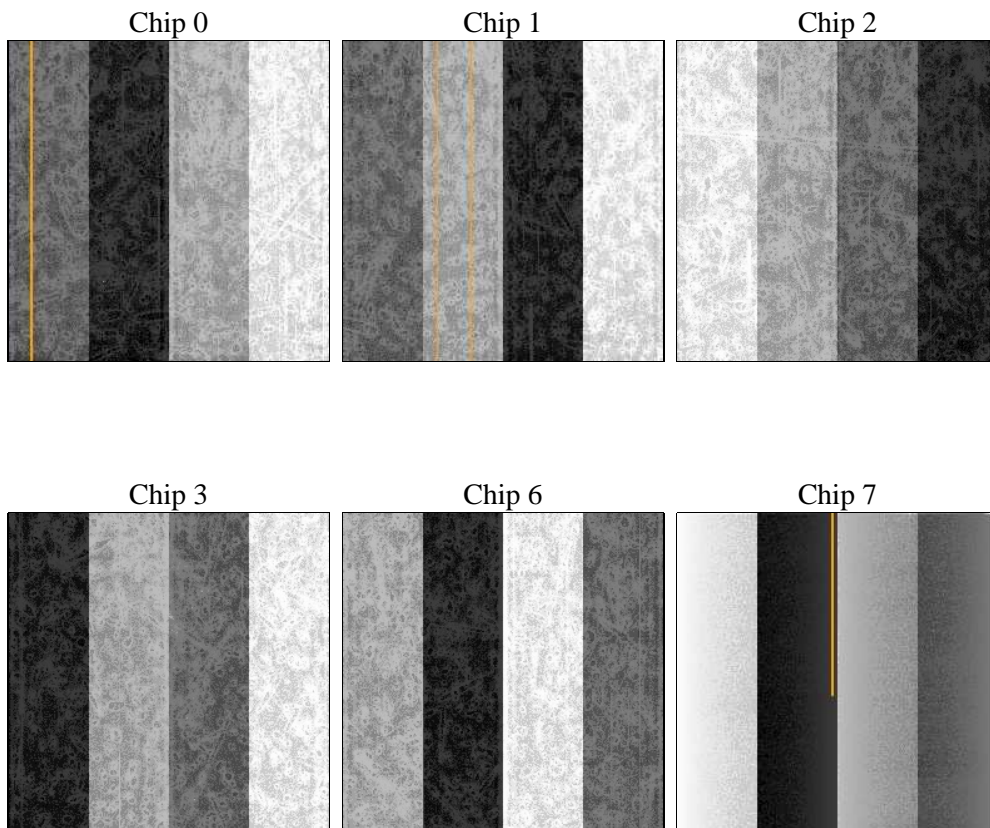
2 OBI

2.1 OBI

2.1.1 Images



2.1.2 Bias



2.1.3 Parameters

obi_num	0	Obi number	sched_exp_time	10000.000000	[s] Scheduled observation exposure time
ascdsver	8.4.3	Processing system revision	ontime	9755.3781083524	Sum of GTIs [s]
caldbver	4.4.9	 	ontime0	9755.2549883723	Sum of GTIs [s]
date	2012-04-02T03:57:39	Date and time of file creation	ontime1	9755.2960283458	Sum of GTIs [s]
revision	2	Processing version of data	ontime2	9755.3370683491	Sum of GTIs [s]
			ontime3	9755.3781083524	Sum of GTIs [s]
			ontime6	9755.460188359	Sum of GTIs [s]
			ontime7	9755.4191284478	Sum of GTIs [s]
			l1events	553750	Number of level 1 events

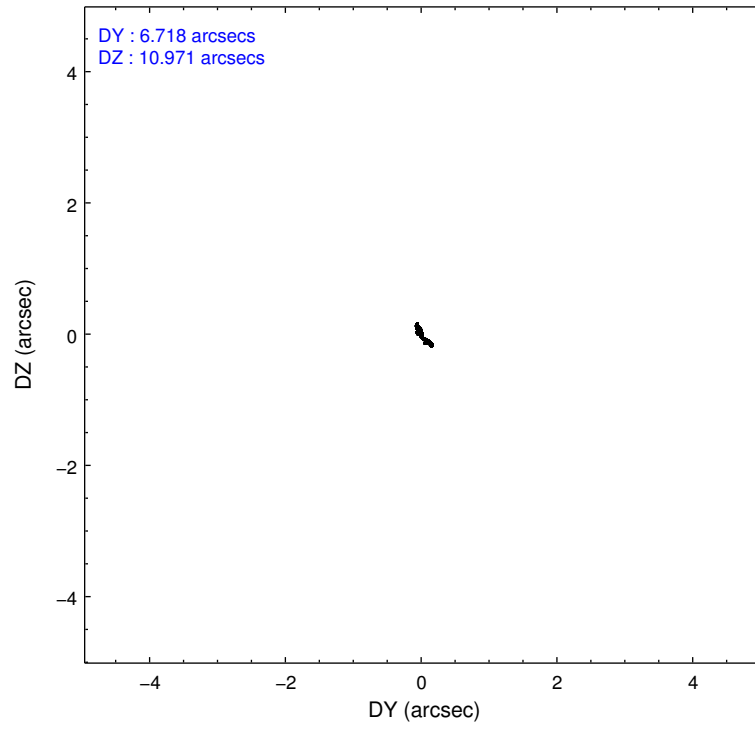
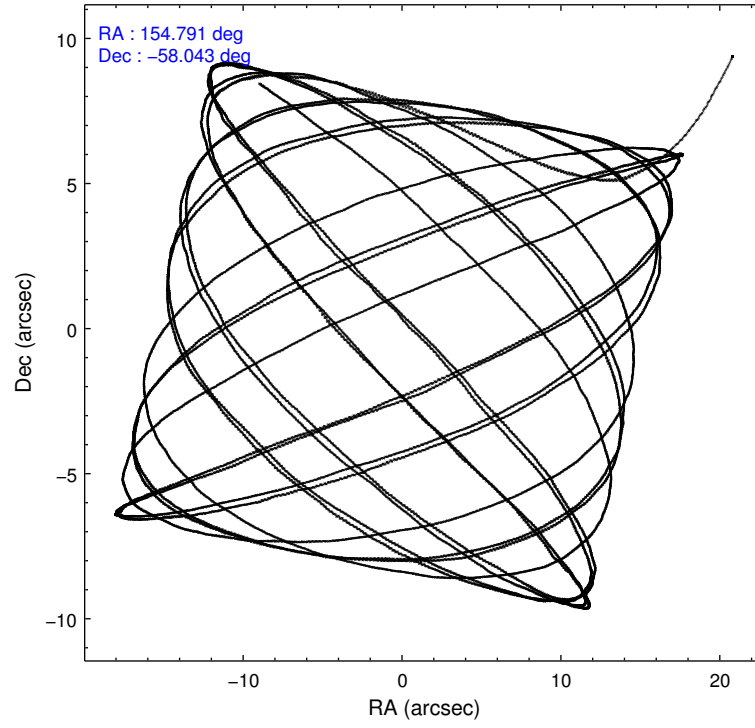
2.1.4 Events

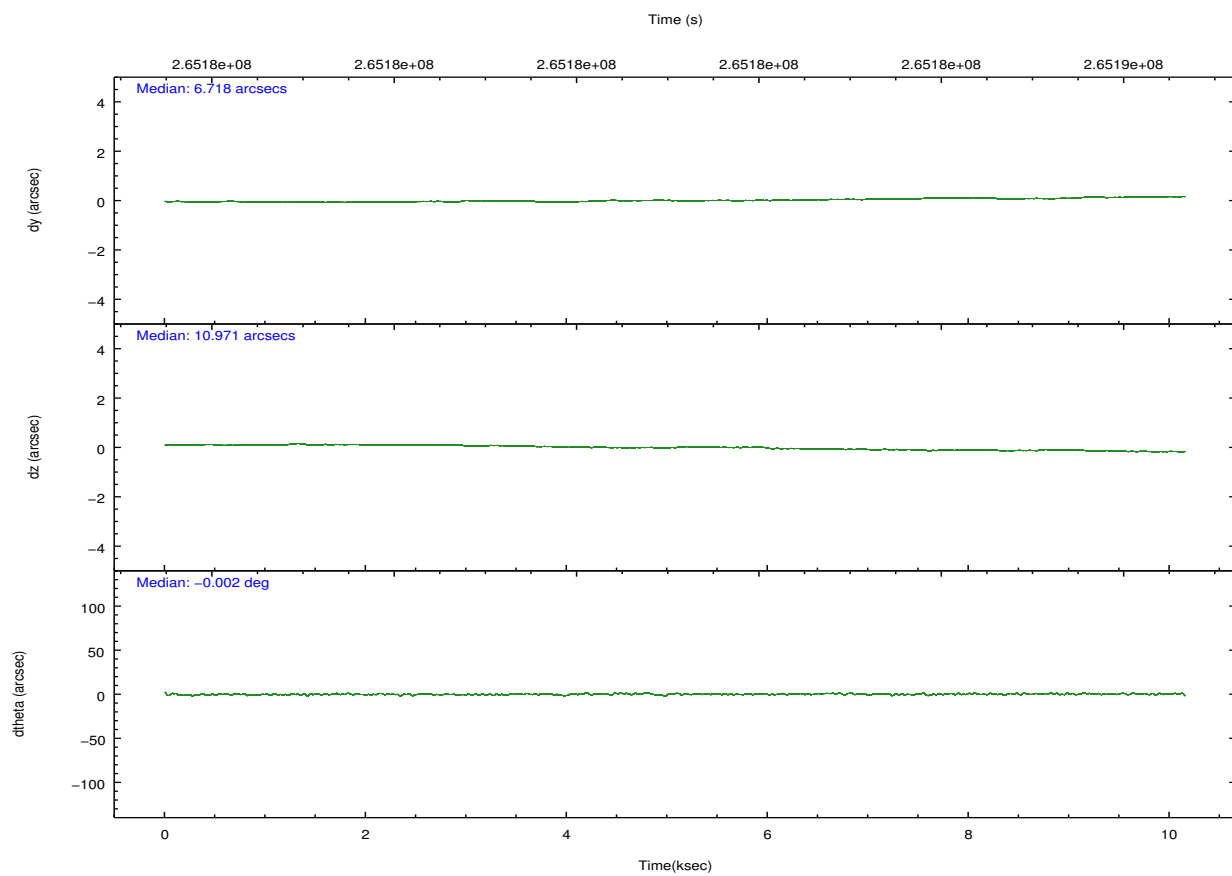
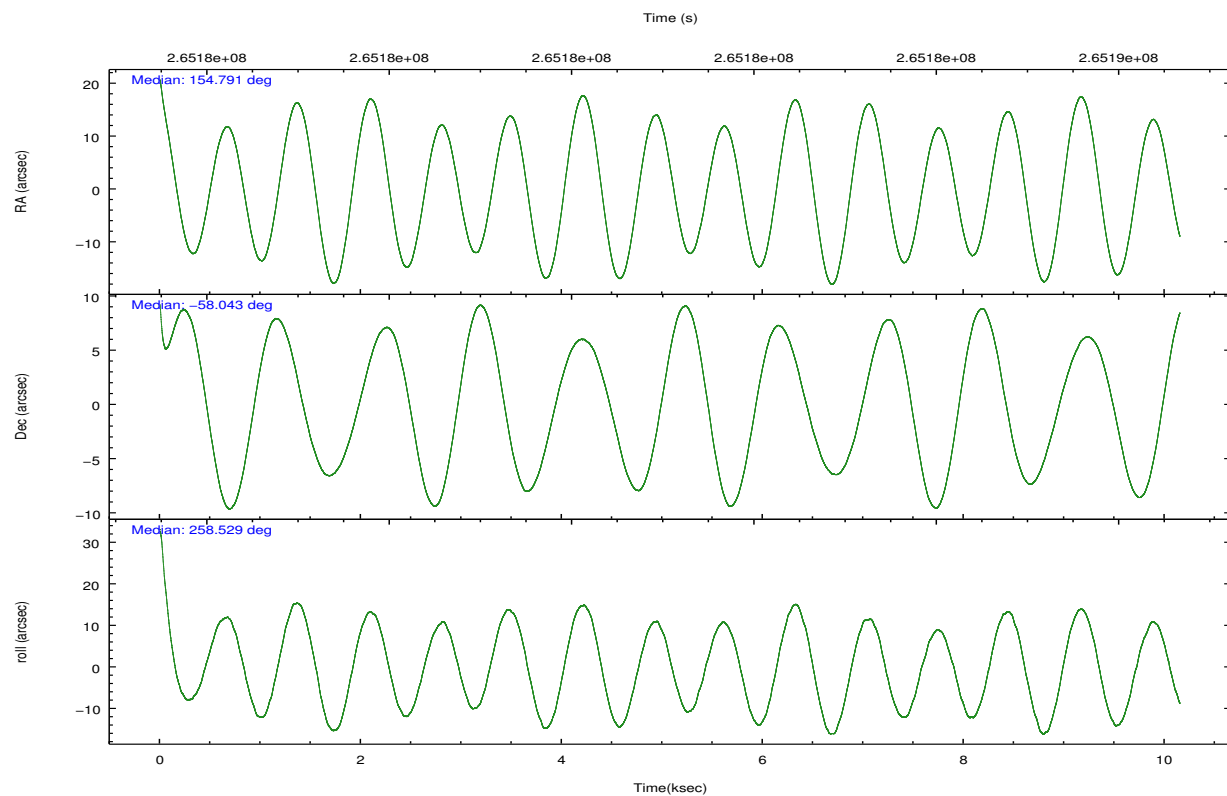
	ccd 0	ccd 1	ccd 2	ccd 3	ccd 6	ccd 7		ccd 0	ccd 1	ccd 2	ccd 3	ccd 6	ccd 7
level 1 events	81380	82974	88310	88839	91057	121190	grade 0 events	4919	4896	5762	5107	4468	4527
rejected events	70332	71203	76612	77755	80115	70558		6%	5%	6%	5%	4%	3%
rejected %	86%	85%	86%	87%	87%	58%	grade 1 events	53	46	59	73	53	130
								0%	0%	0%	0%	0%	0%
							grade 2 events	2326	2513	2270	2132	2279	10293
								2%	3%	2%	2%	2%	8%
							grade 3 events	1022	1085	933	1018	1040	4436
								1%	1%	1%	1%	1%	3%
							grade 4 events	941	1080	1020	974	981	4299
								1%	1%	1%	1%	1%	3%
							grade 5 events	3519	3776	3411	4083	4238	11475
								4%	4%	3%	4%	4%	9%
							grade 6 events	1843	2197	1714	1858	2174	27103
								2%	2%	1%	2%	2%	22%
							grade 7 events	66757	67381	73141	73594	75824	58927
								82%	81%	82%	82%	83%	48%

2.2 Compared Parameters

Parameter	Planned	Actual	Parameter	Planned	Actual
Instrument	ACIS	ACIS	Obspar format version number	7	7
Detector	ACIS-012367	ACIS-012367	Obspar file type	PREDICTED	ACTUAL
Grating	NONE	NONE	Obspar update status	NONE	UPDATED
Data mode	FAINT	FAINT	Number of optional ACIS chips dropped	0	0
Observation mode	POINTING	POINTING	On-chip summing requested	N	N
[deg] Pointing RA	154.774239	154.7909211922049	Subarray requested	NONE	NONE
[deg] Pointing Dec	-58.017060	-58.04298183090413	Alternating exposures requested	N	N
[deg] Pointing Roll	258.313891	258.5367503917344	[s] Primary exposure time	0.000000	3.2
[mm] SIM focus pos	-0.782348	-0.7809083437167272			
[mm] SIM defocus	0	0.001439871863259334			
[mm] SIM translation stage pos	-233.592463	-233.5874344608287			
[mm] SIM translation stage offset	0	-0.005018542100998502			
[s] Observation start time (MET)	265176159.184000	265175074.56982			
Observation start date	2006-05-28T04:01:34	2006-05-28T03:44:34			
[s] Observation end time (MET)	265186159.184000	265187000.95788			
Observation end date	2006-05-28T06:48:14	2006-05-28T07:03:20			
Read mode	TIMED	TIMED			

2.3 Aspect



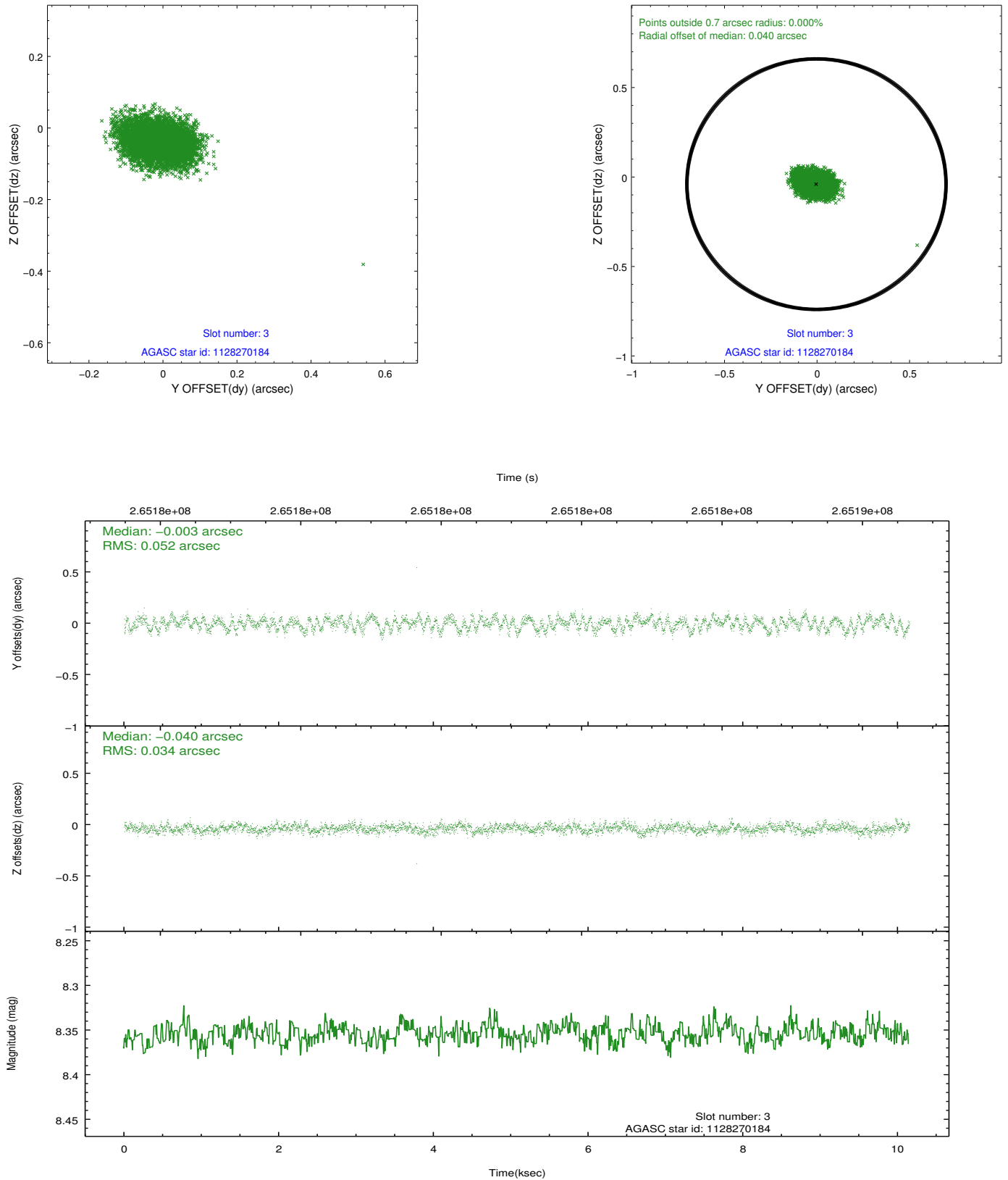


Slot Statistics

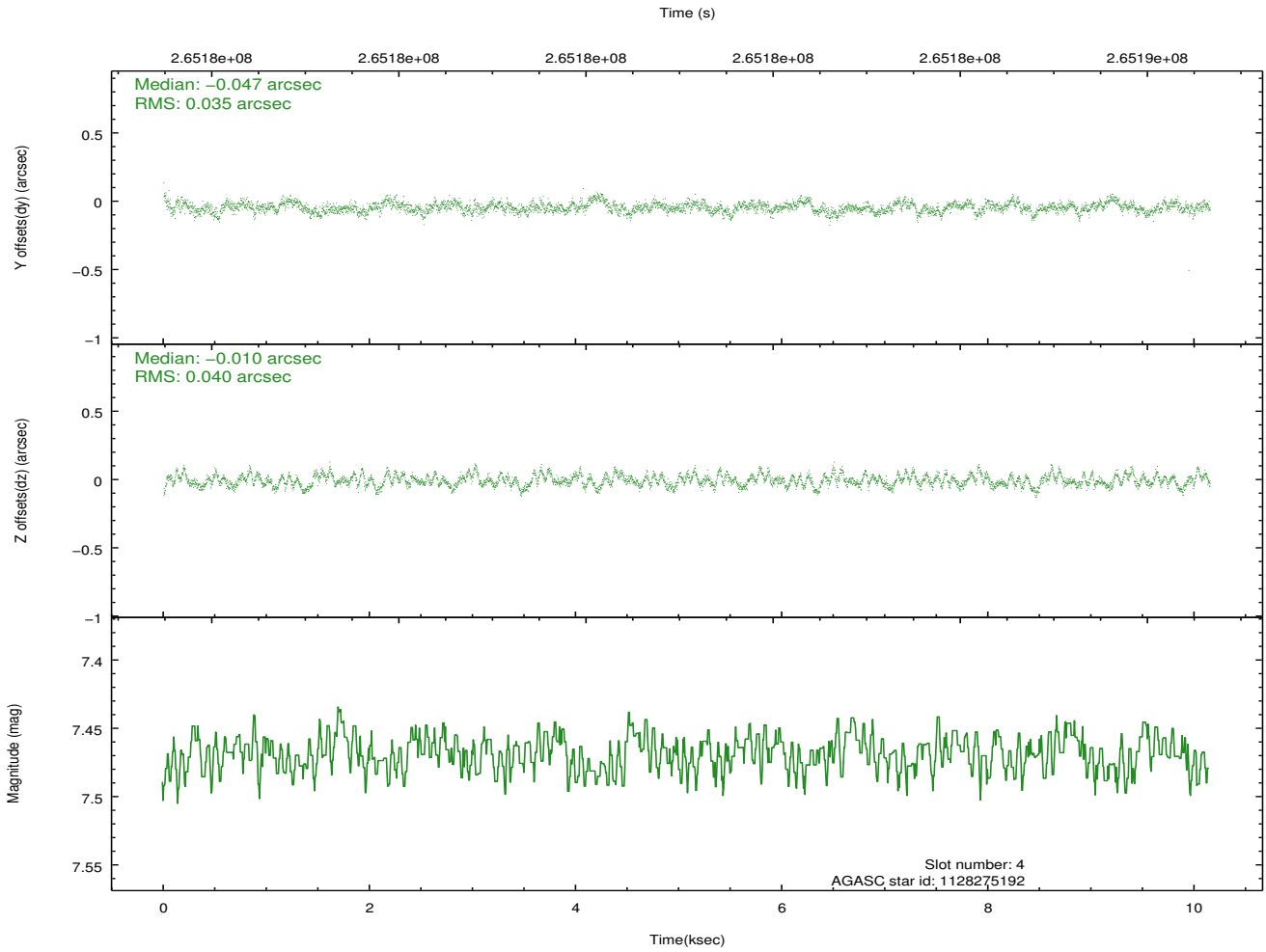
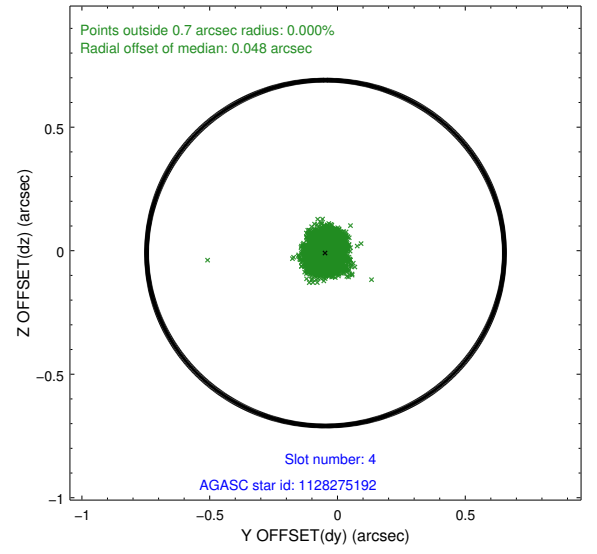
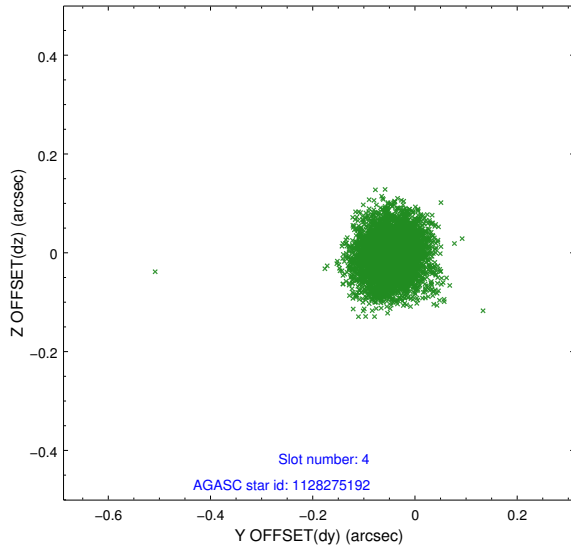
slot	status	id	mag	n_pts	med_dy	med_dz	dr1	dr2	ra	dec	mean_y	mean_z
0	FID	ACIS-I-2	7.14	2477	-0.069	-0.098	0.010	0.017	0.000000	0.000000	-761.29	-840.92
1	FID	ACIS-I-4	7.18	2476	0.120	0.071	0.007	0.013	0.000000	0.000000	2152.73	1065.15
2	FID	ACIS-I-5	7.23	2477	-0.152	0.096	0.010	0.016	0.000000	0.000000	-1814.53	1063.63
3	GUIDE	1128270184	8.35	4952	-0.003	-0.040	0.066	0.107	155.662399	-57.622731	-1725.89	1391.17
4	GUIDE	1128275192	7.47	4951	-0.047	-0.010	0.056	0.092	155.146895	-57.766309	-1027.19	518.44
5	GUIDE	1128805016	8.08	4951	-0.138	0.037	0.060	0.099	153.672116	-58.552929	2325.16	-1632.43
6	GUIDE	1128798008	8.57	4945	0.090	0.003	0.086	0.135	153.338718	-58.362994	1798.05	-2396.40
7	GUIDE	1128798720	8.75	4950	0.100	0.008	0.076	0.127	155.682449	-58.527622	1465.89	2045.70

2.4 Star Slots

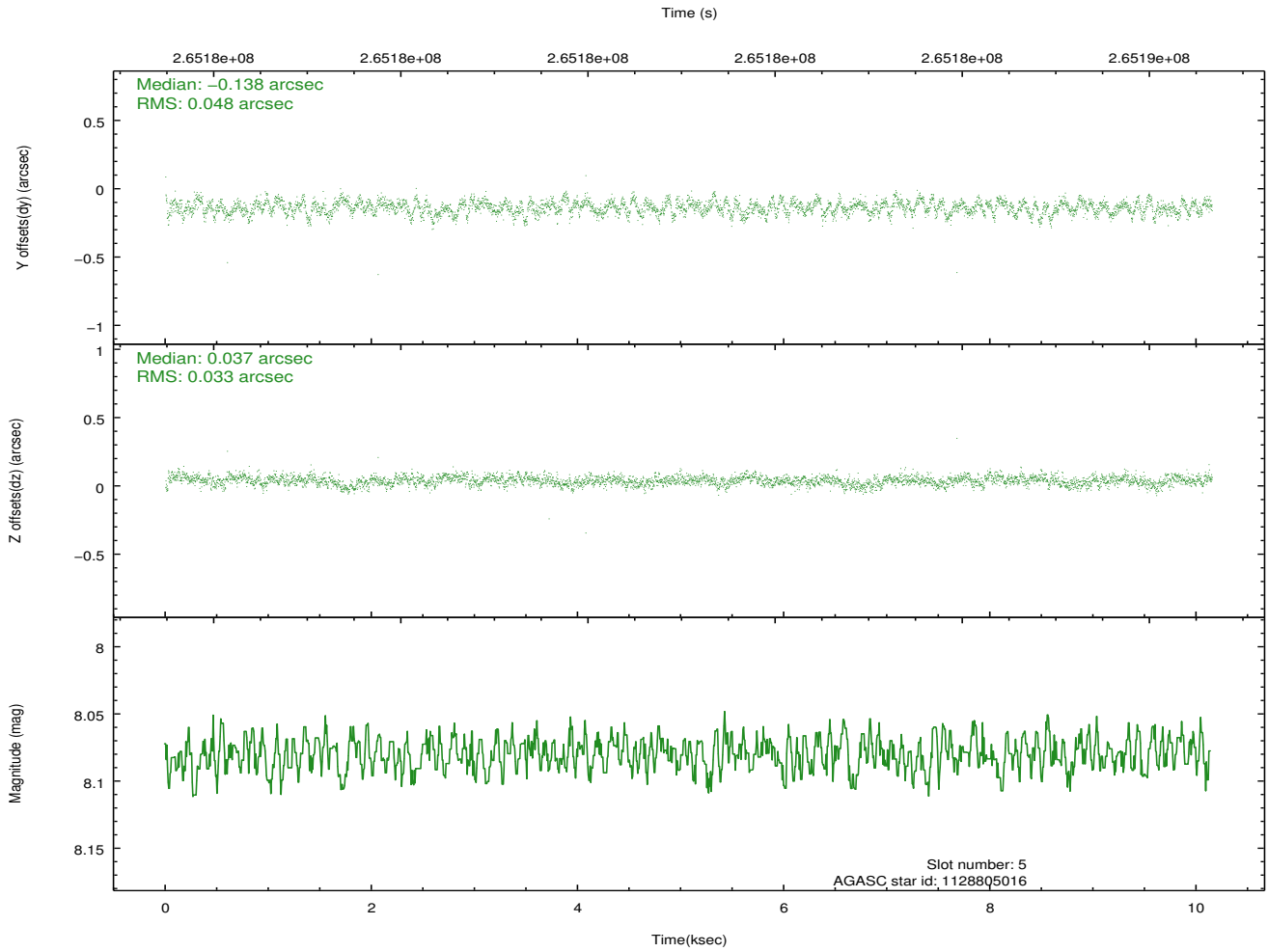
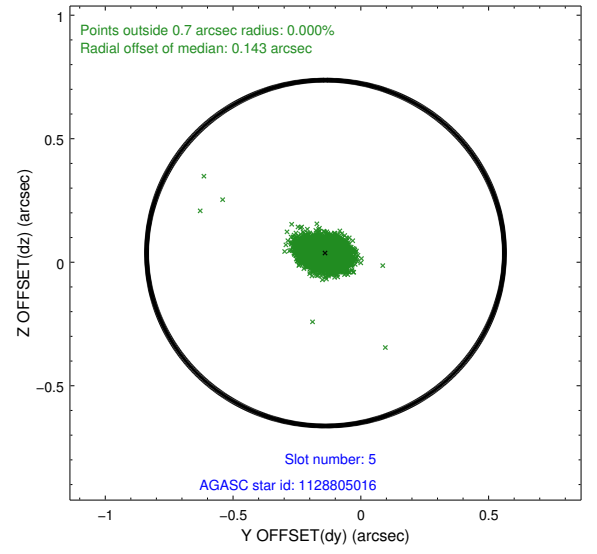
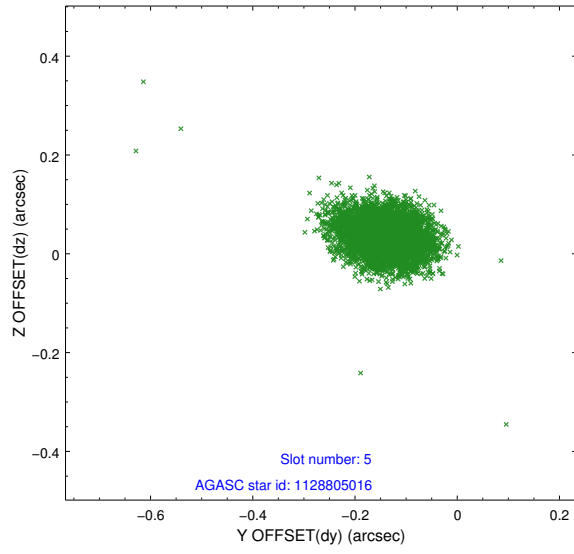
2.4.1 Slot 3



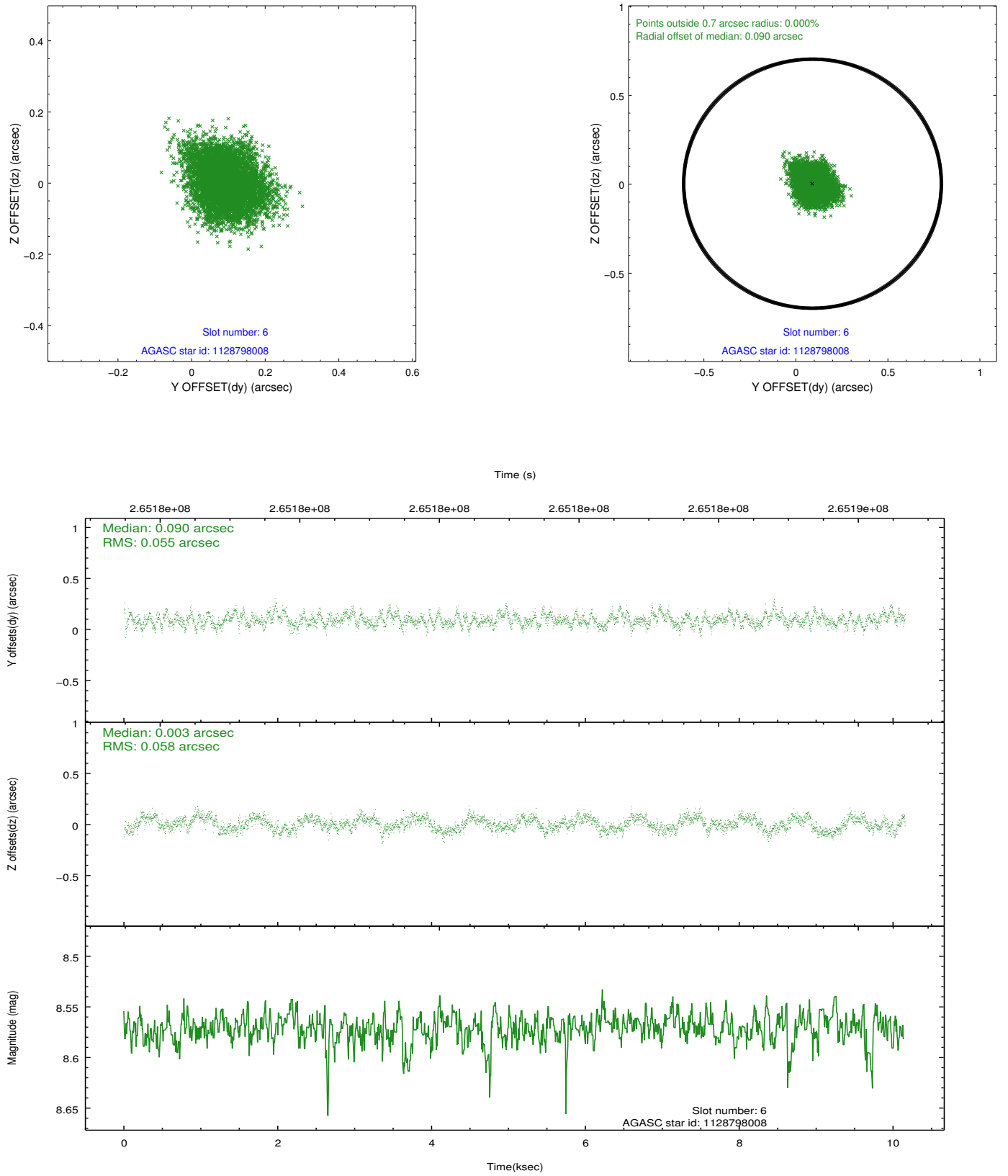
2.4.2 Slot 4



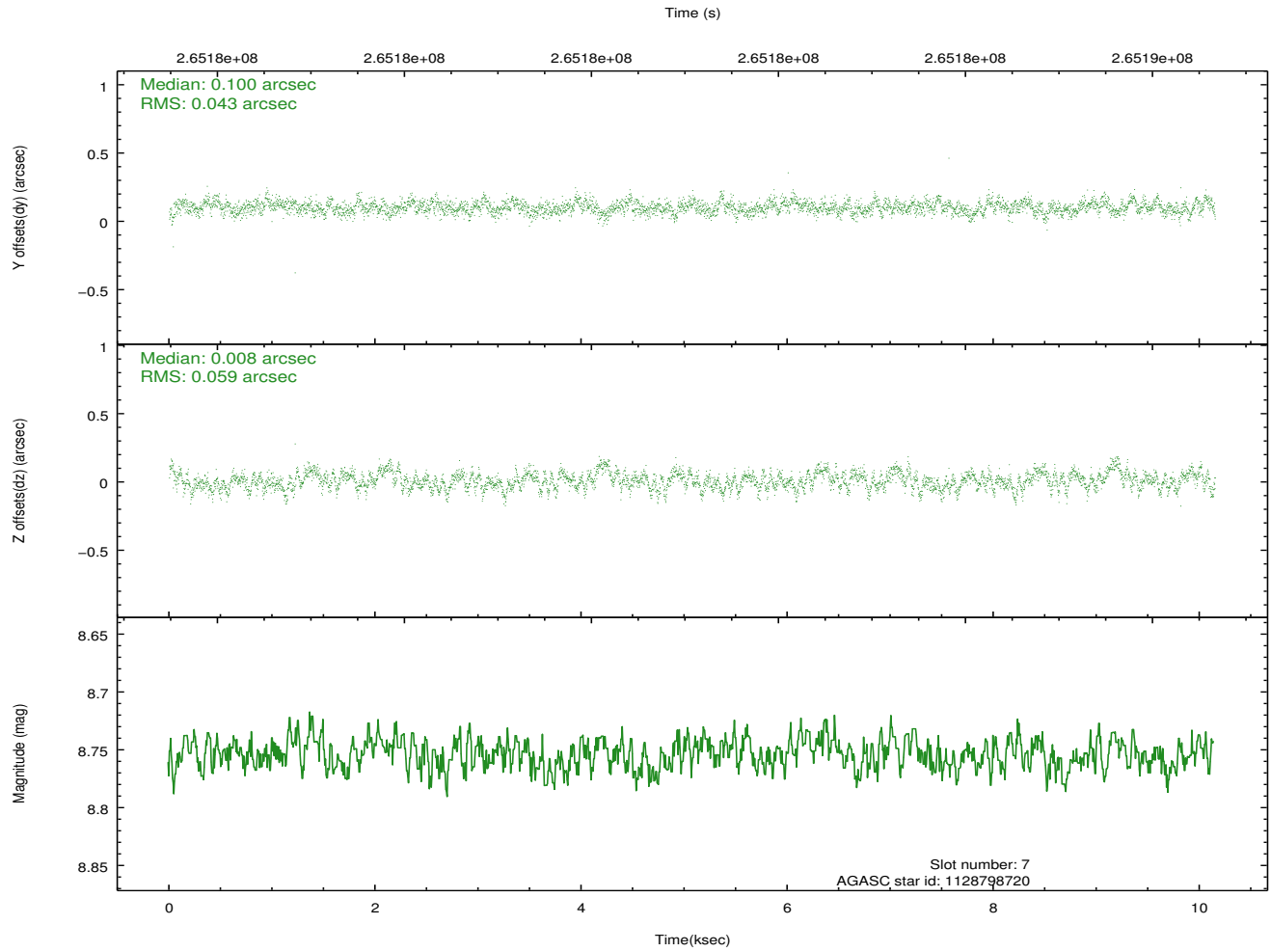
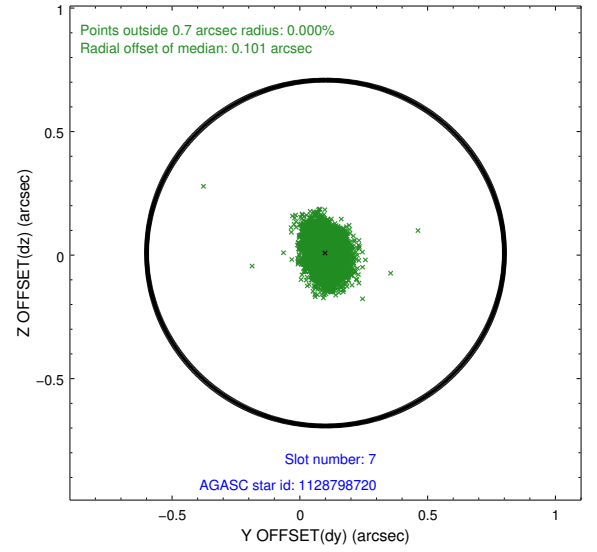
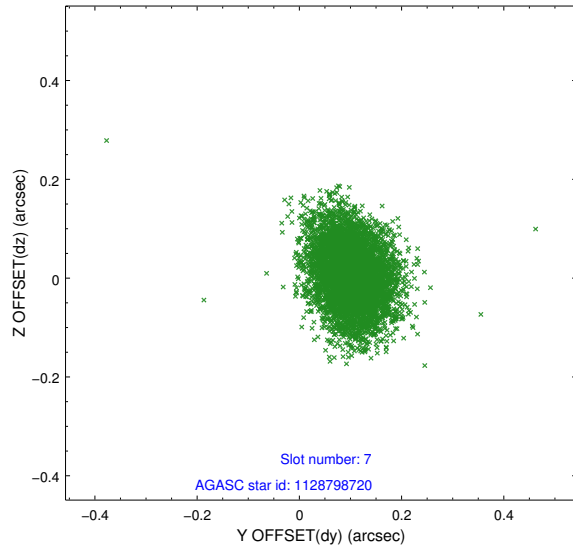
2.4.3 Slot 5



2.4.4 Slot 6

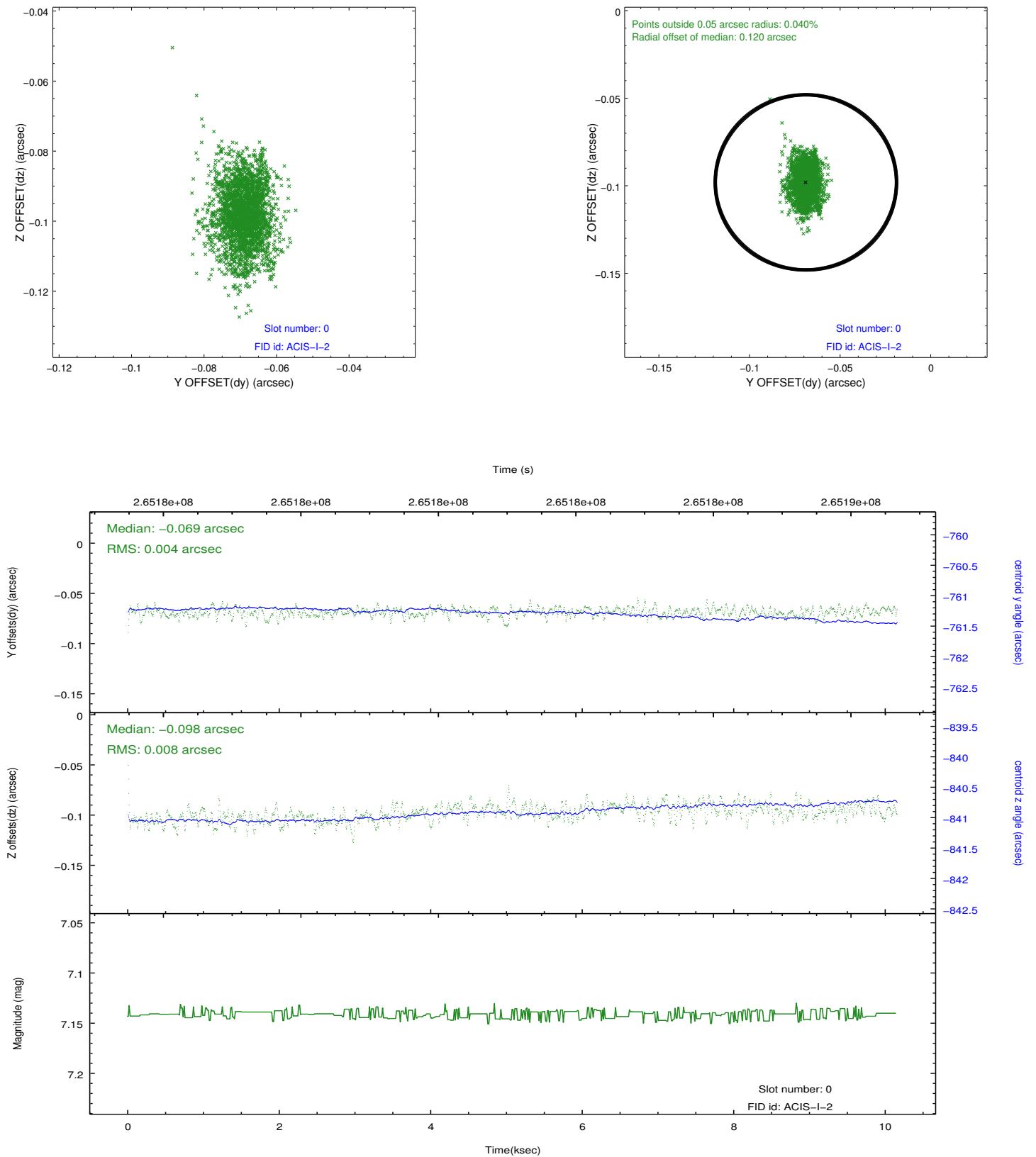


2.4.5 Slot 7

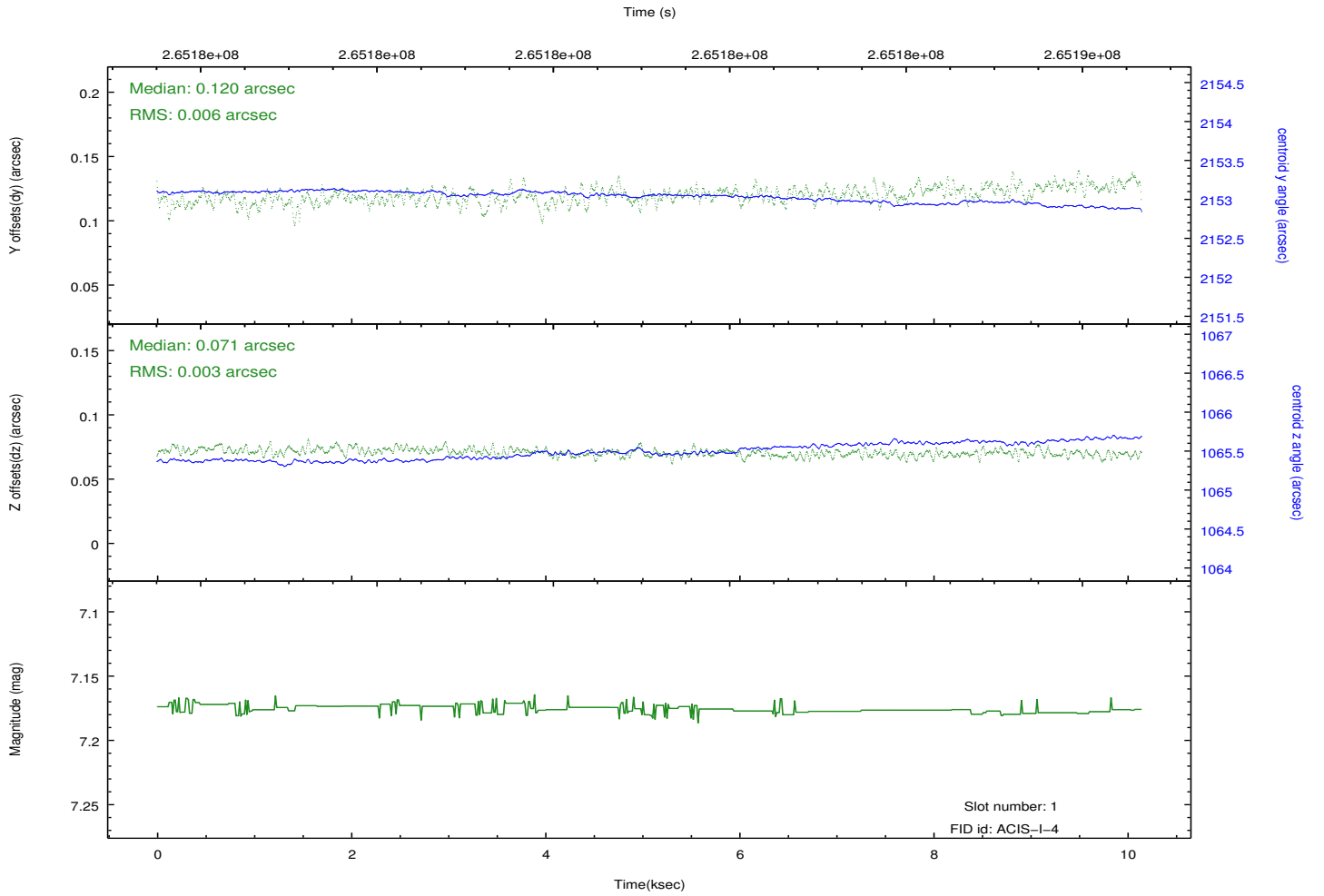
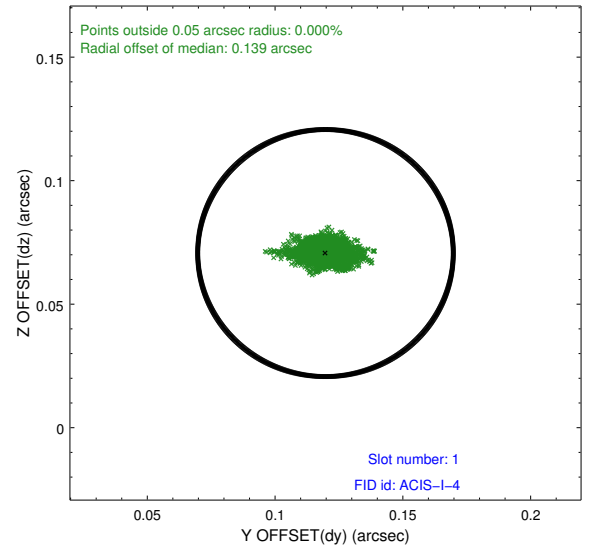
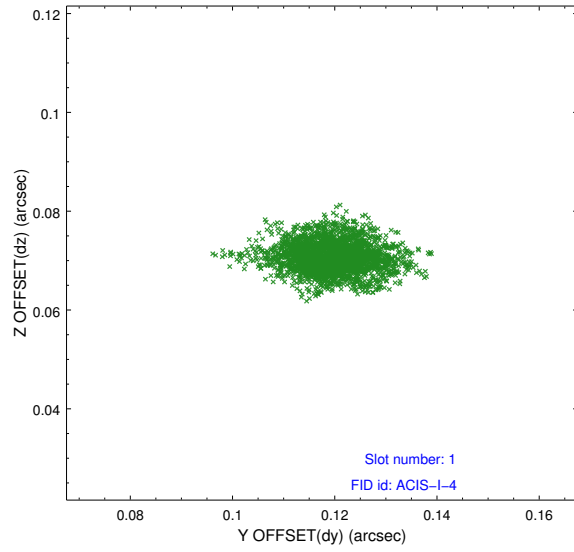


2.5 FID Slots

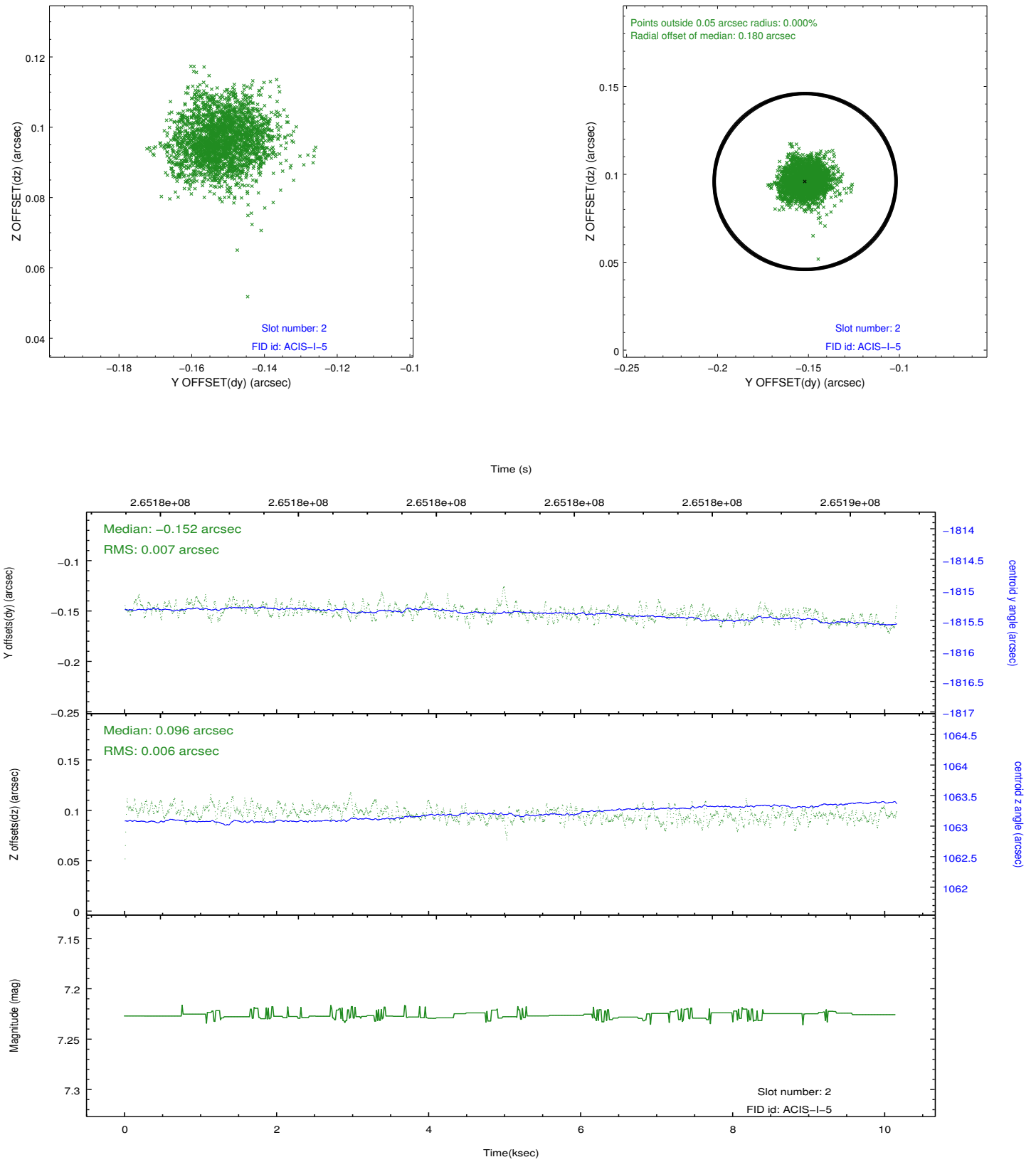
2.5.1 Slot 0



2.5.2 Slot 1



2.5.3 Slot 2



A Summary

A.1 Status

V&V Scientist	Jen Lauer
V&V Date (YYYY-MM-DD)	2012.04.03
V&V Edition	1
V&V Disposition and Status	OK
V&V Charge Time	9.75679996

A.2 Comments