

V&V Reference Report

L2 ASCDS Version : 8.4.3.1

Observation 6398 - L2 Version 2
Chandra X-Ray Center

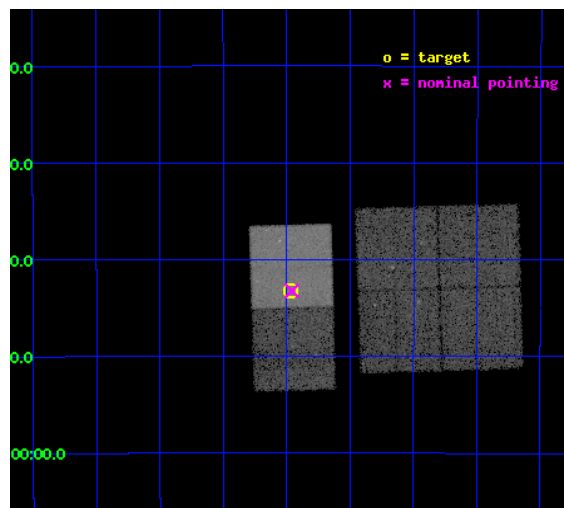
L2 Processing Date : Apr 4 2012

Contents

1	Front	2
2	OBI	3
2.1	OBI	3
2.1.1	Images	3
2.1.2	Bias	3
2.1.3	Parameters	4
2.1.4	Events	4
2.2	Compared Parameters	5
2.3	Aspect	6
2.4	Star Slots	9
2.4.1	Slot 3	9
2.4.2	Slot 4	10
2.4.3	Slot 5	11
2.4.4	Slot 6	12
2.4.5	Slot 7	13
2.5	FID Slots	14
2.5.1	Slot 0	14
2.5.2	Slot 1	15
2.5.3	Slot 2	16
A	Summary	17
A.1	Status	17
A.2	Comments	17

1 Front

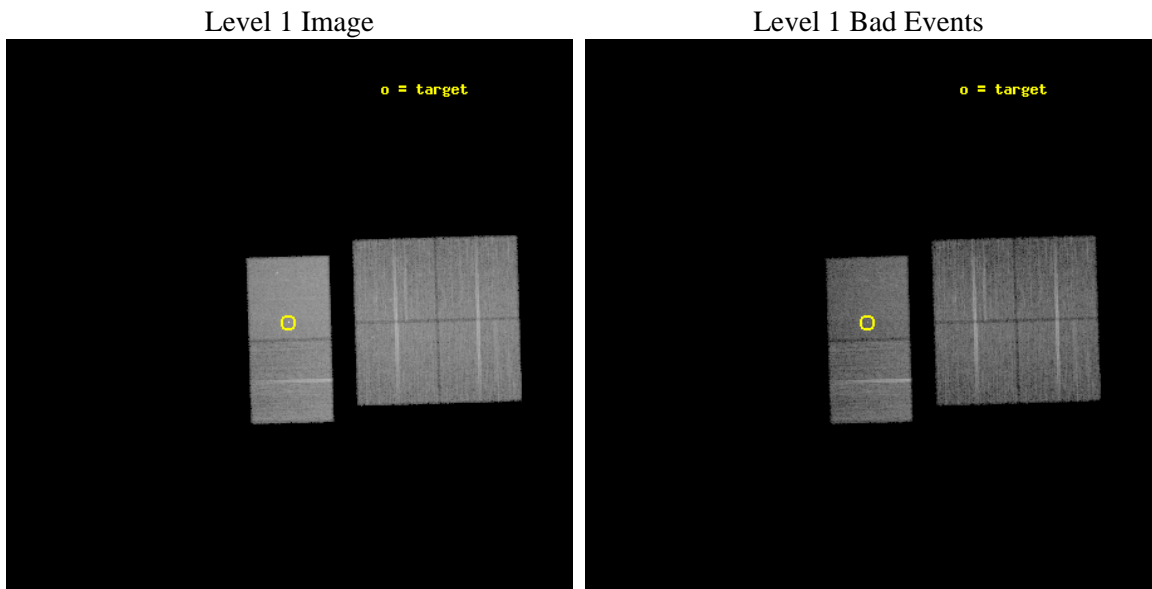
seq_num	200375	Sequence number
obs_id	6398	Observation id
title	On the origin of X-ray emission from Herbig Ae/Be stars	Proposal t
observer	Dr Beate Stelzer	Principal investigator
object	Hen 3-1141	Source name
dtcycle	0	
cycle	P	events from which exps? Prim/Second/Both
ra_targ	241.741667	Observer's specified target RA [deg]
dec_targ	-27.719389	Observer's specified target Dec [deg]
ra_nom	241.73975412831	Nominal RA [deg]
dec_nom	-27.720605749279	Nominal Dec [deg]
roll_nom	268.33253639235	Nominal Roll [deg]
revision	2	Processing version of data
ontime	12953.599951744	Sum of GTIs [s]
livetime	12789.573669434	Livetime [s]
ontime0	12953.599951744	Sum of GTIs [s]
ontime1	12953.599951744	Sum of GTIs [s]
ontime2	12953.599951744	Sum of GTIs [s]
ontime3	12953.599951744	Sum of GTIs [s]
ontime6	12953.599951744	Sum of GTIs [s]
ontime7	12953.599951744	Sum of GTIs [s]
l2events	132054	Number of level 2 events



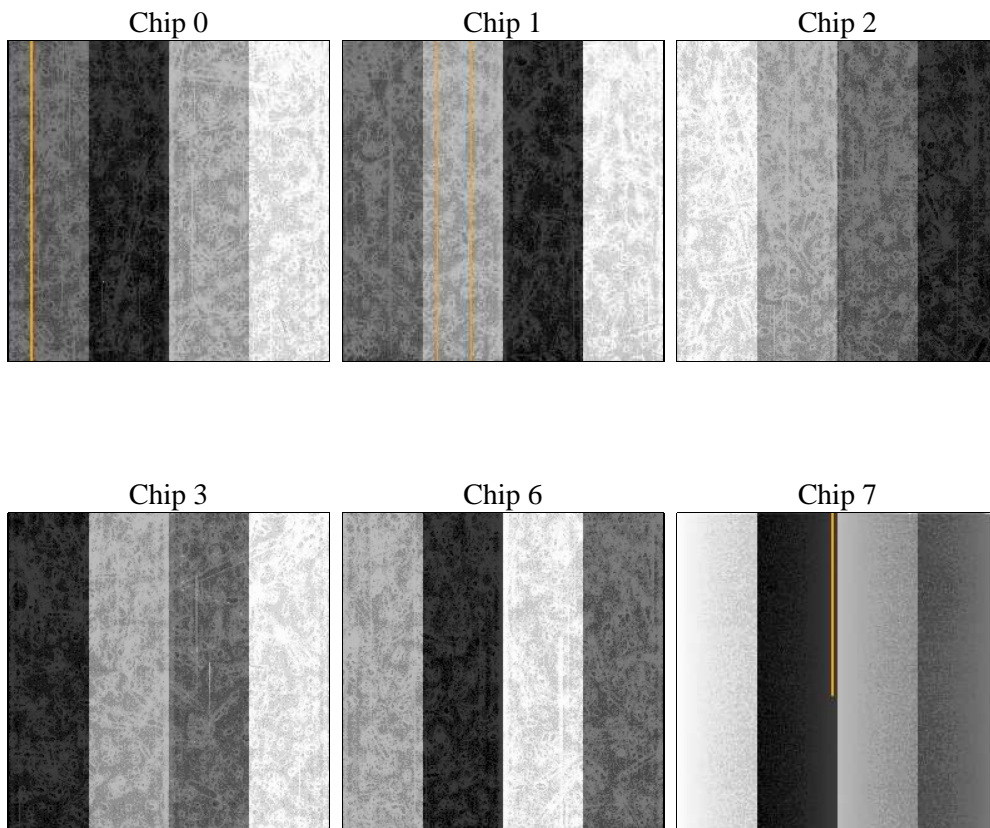
2 OBI

2.1 OBI

2.1.1 Images



2.1.2 Bias



2.1.3 Parameters

obi_num	1	Obi number	sched_exp_time	13000.000000	[s] Scheduled observation exposure time
ascdsver	8.4.3.1	Processing system revision	ontime	12953.599951744	Sum of GTIs [s]
caldsver	4.4.9	 	ontime0	12953.599951744	Sum of GTIs [s]
date	2012-04-04T19:55:08	Date and time of file creation	ontime1	12953.599951744	Sum of GTIs [s]
revision	2	Processing version of data	ontime2	12953.599951744	Sum of GTIs [s]
			ontime3	12953.599951744	Sum of GTIs [s]
			ontime6	12953.599951744	Sum of GTIs [s]
			ontime7	12953.599951744	Sum of GTIs [s]
			l1events	751073	Number of level 1 events

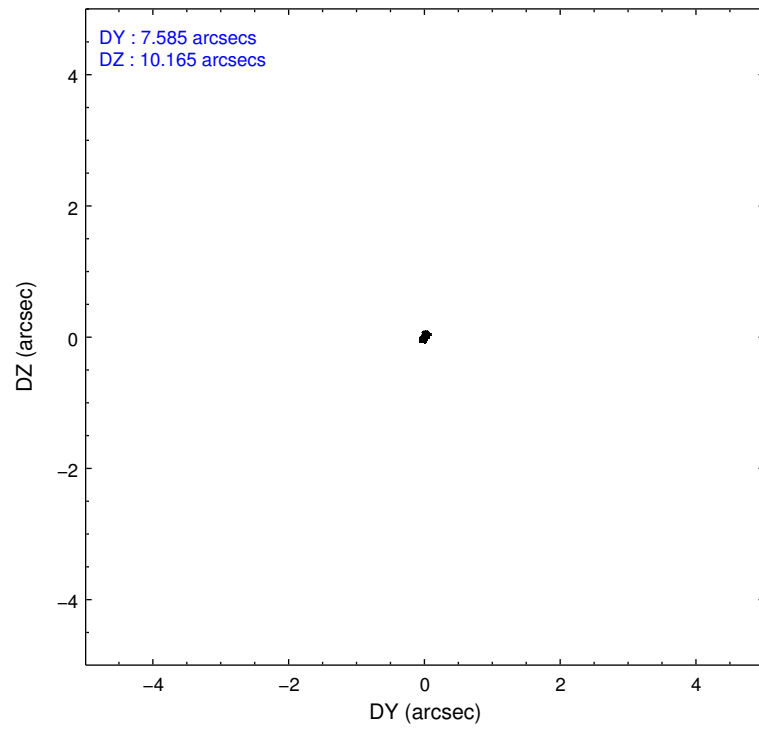
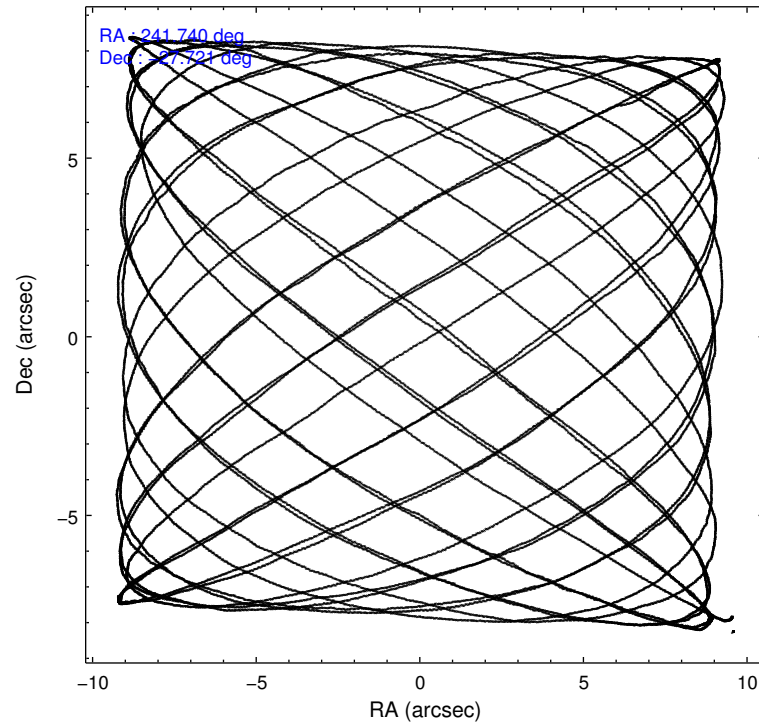
2.1.4 Events

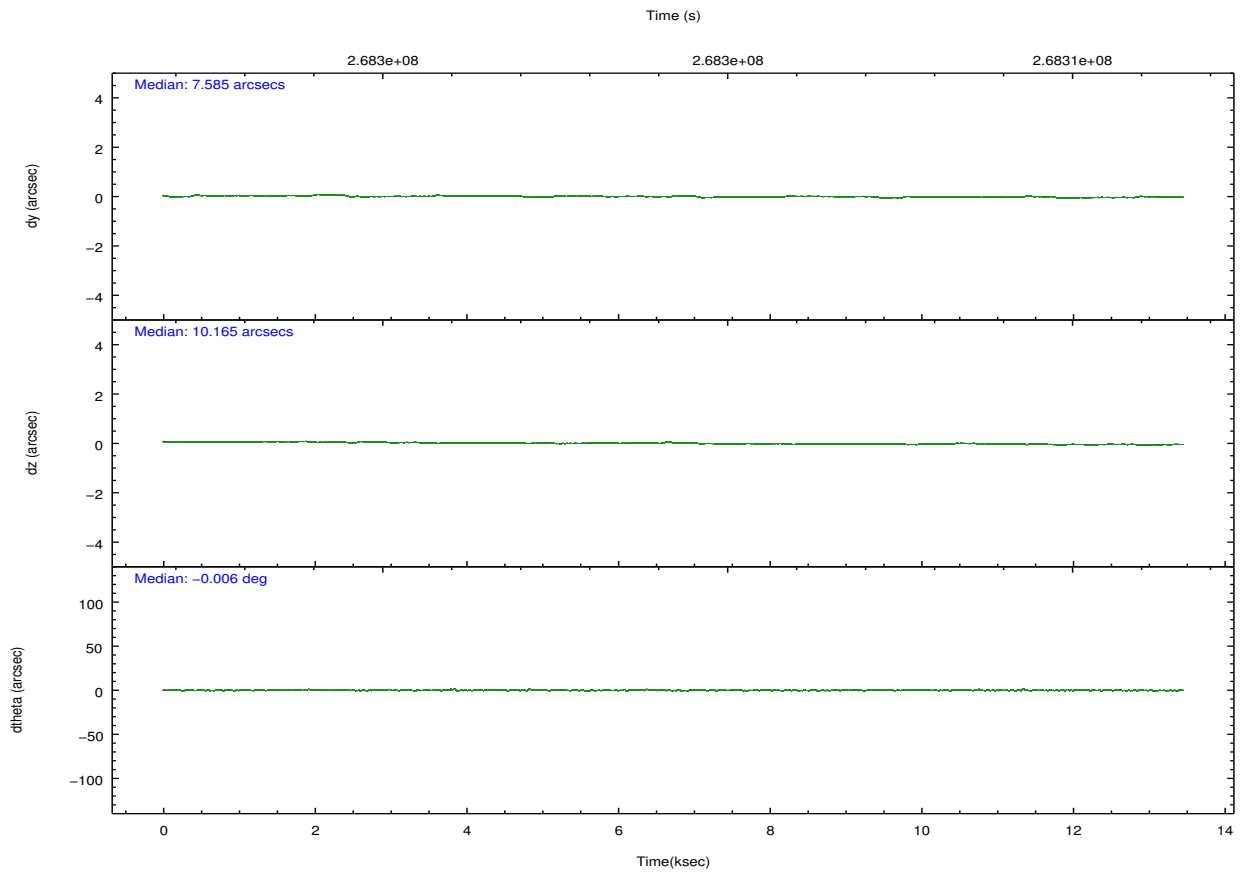
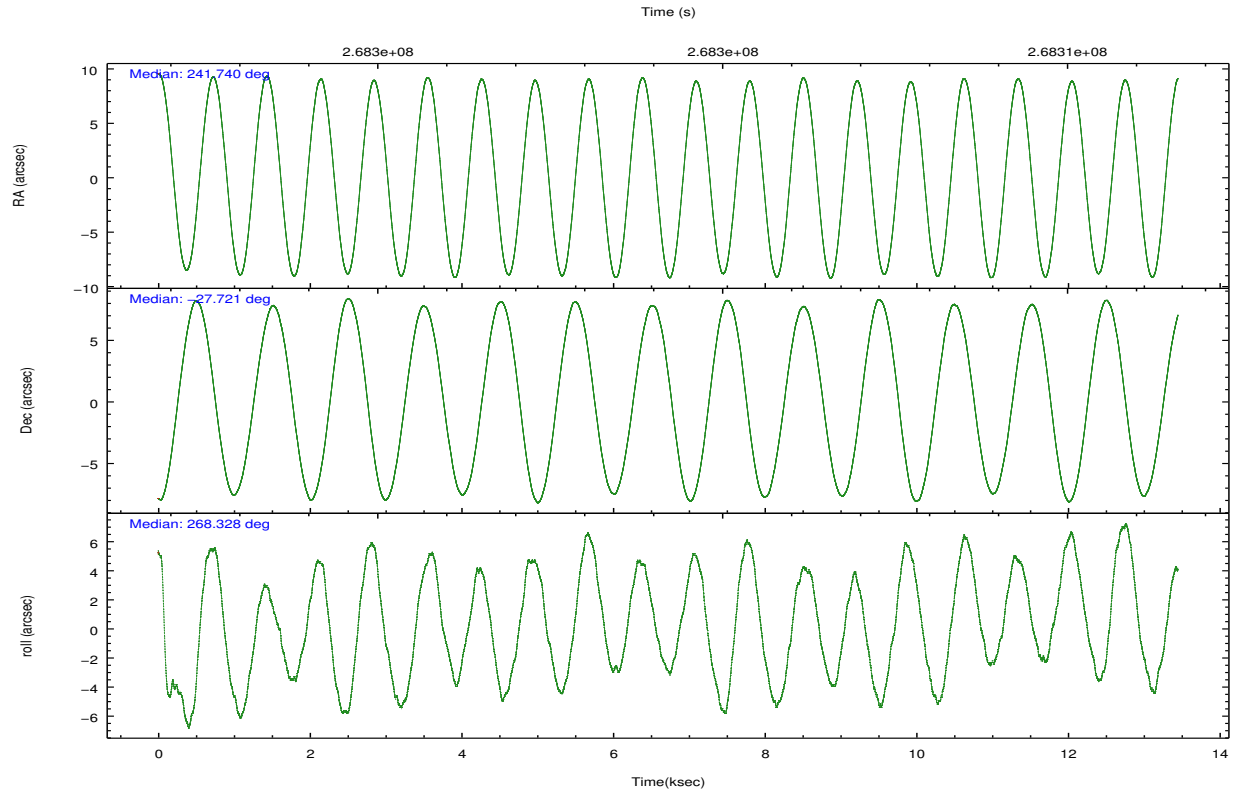
	ccd 0	ccd 1	ccd 2	ccd 3	ccd 6	ccd 7		ccd 0	ccd 1	ccd 2	ccd 3	ccd 6	ccd 7
level 1 events	115910	108949	118161	117388	124782	165883	grade 0 events	6497	5858	6382	6440	5924	7000
rejected events	101073	93864	104038	103181	110013	95258		5%	5%	5%	5%	4%	4%
rejected %	87%	86%	88%	87%	88%	57%	grade 1 events	91	54	72	79	71	168
								0%	0%	0%	0%	0%	0%
							grade 2 events	3199	3454	2880	2728	3146	14473
								2%	3%	2%	2%	2%	8%
							grade 3 events	1371	1451	1307	1311	1356	6202
								1%	1%	1%	1%	1%	3%
							grade 4 events	1287	1411	1311	1317	1361	5967
								1%	1%	1%	1%	1%	3%
							grade 5 events	4830	4870	4491	5480	5542	15098
								4%	4%	3%	4%	4%	9%
							grade 6 events	2488	2911	2246	2413	2986	37003
								2%	2%	1%	2%	2%	22%
							grade 7 events	96147	88940	99472	97620	104396	79972
								82%	81%	84%	83%	83%	48%

2.2 Compared Parameters

Parameter	Planned	Actual	Parameter	Planned	Actual
Instrument	ACIS	ACIS	Obspar format version number	7	7
Detector	ACIS-012367	ACIS-012367	Obspar file type	PREDICTED	ACTUAL
Grating	NONE	NONE	Obspar update status	NONE	UPDATED
Data mode	FAINT	FAINT	Number of optional ACIS chips dropped	0	0
Observation mode	POINTING	POINTING	On-chip summing requested	N	N
[deg] Pointing RA	241.724782	241.739754128307	Subarray requested	NONE	NONE
[deg] Pointing Dec	-27.696788	-27.72060574927853	Alternating exposures requested	N	N
[deg] Pointing Roll	268.168947	268.3325363923505	[s] Primary exposure time	0.000000	3.2
[mm] SIM focus pos	-0.684267	-0.6828225247311905			
[mm] SIM defocus	0	0.001444936568705701			
[mm] SIM translation stage pos	-190.132523	-190.1400660498719			
[mm] SIM translation stage offset	0	0.00754346686406393			
[s] Observation start time (MET)	268297931.184000	268296782.94081			
Observation start date	2006-07-03T07:11:06	2006-07-03T06:53:02			
[s] Observation end time (MET)	268310931.184000	268311856.59152			
Observation end date	2006-07-03T10:47:46	2006-07-03T11:04:16			
Read mode	TIMED	TIMED			

2.3 Aspect



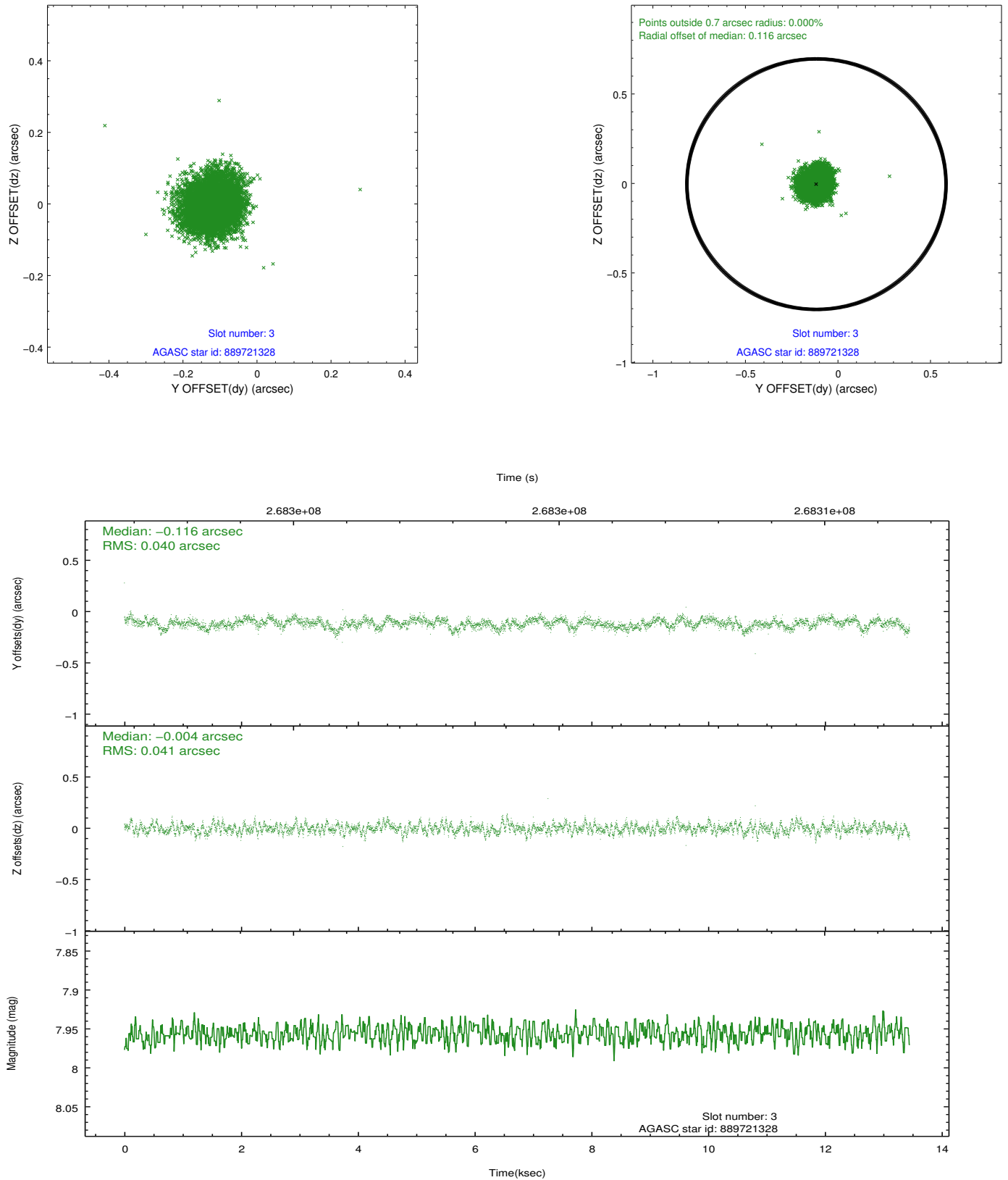


Slot Statistics

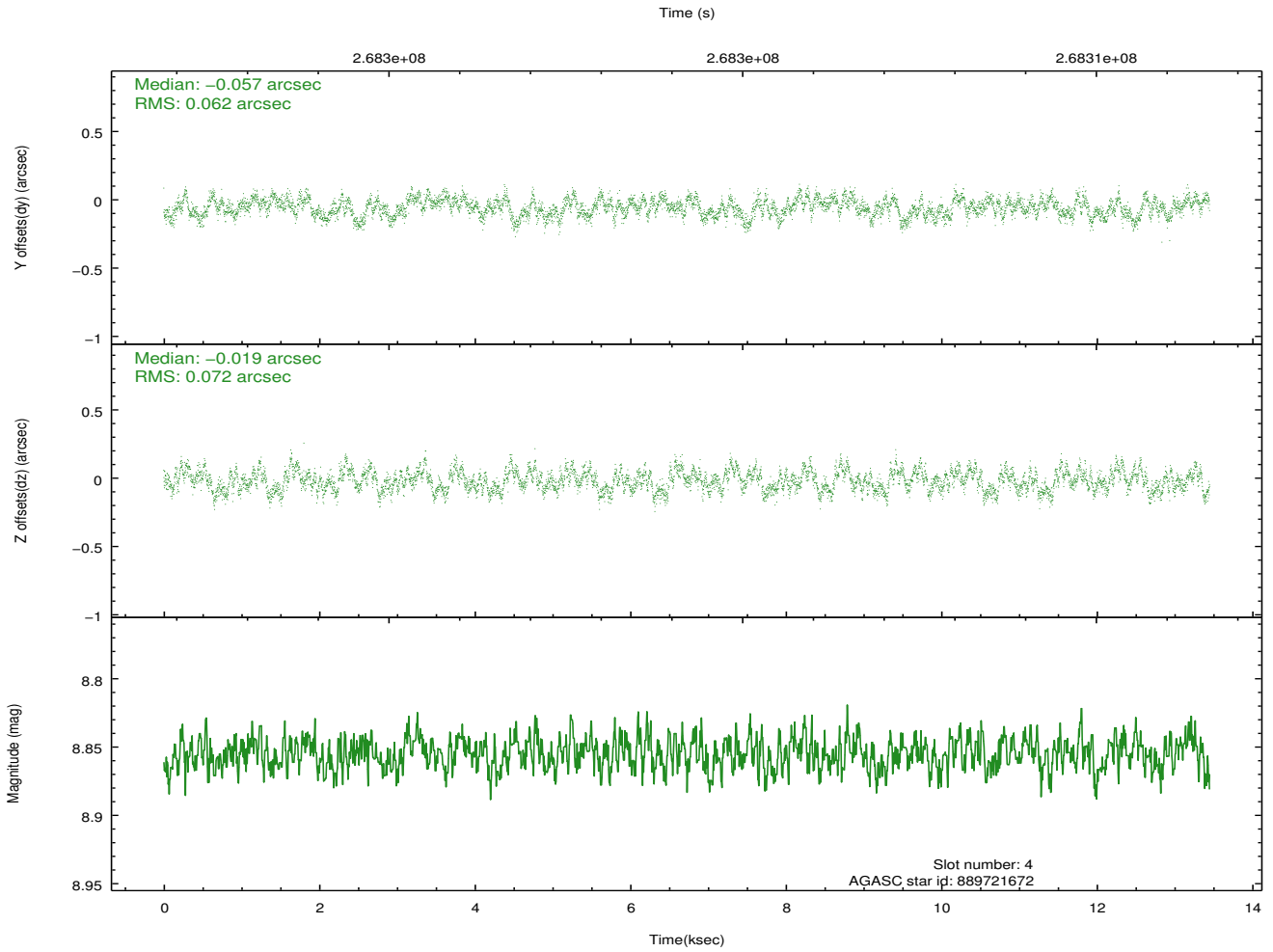
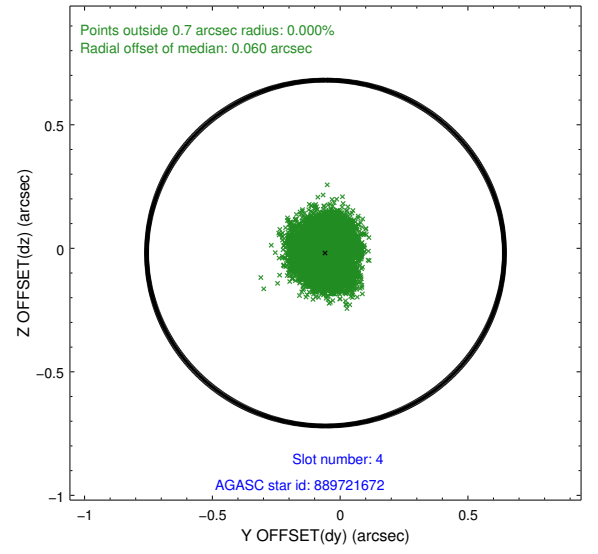
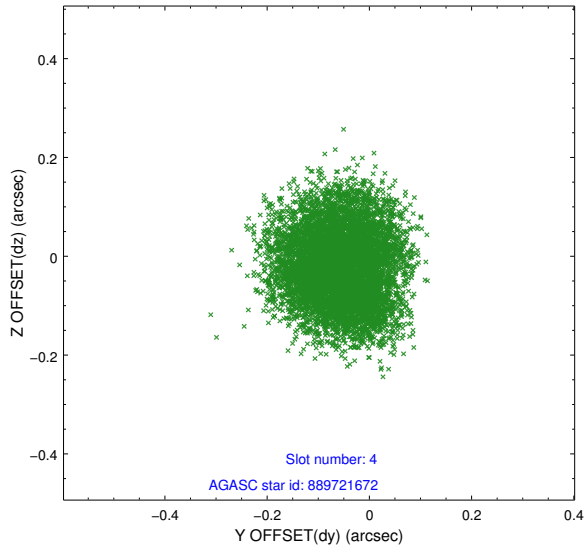
slot	status	id	mag	n_pts	med_dy	med_dz	dr1	dr2	ra	dec	mean_y	mean_z
0	FID	ACIS-S-1	7.19	3280	0.015	-0.048	0.007	0.012	0.000000	0.000000	935.71	-1727.09
1	FID	ACIS-S-4	7.22	3281	0.093	0.031	0.006	0.010	0.000000	0.000000	2153.37	176.80
2	FID	ACIS-S-5	7.23	3281	-0.134	0.030	0.006	0.011	0.000000	0.000000	-1812.88	170.74
3	GUIDE	889721328	7.96	6561	-0.116	-0.004	0.062	0.100	241.537095	-27.824046	477.65	-582.49
4	GUIDE	889721672	8.86	6560	-0.057	-0.019	0.105	0.157	242.288743	-27.923297	761.96	1819.19
5	GUIDE	889721680	9.45	6532	0.081	0.025	0.101	0.162	241.405374	-27.181151	-1820.81	-1081.45
6	GUIDE	890241360	9.42	6553	0.054	-0.047	0.098	0.156	242.258532	-28.184283	1703.60	1749.06
7	GUIDE	890249208	9.05	6556	0.043	0.045	0.078	0.127	241.569298	-28.362376	2411.56	-415.17

2.4 Star Slots

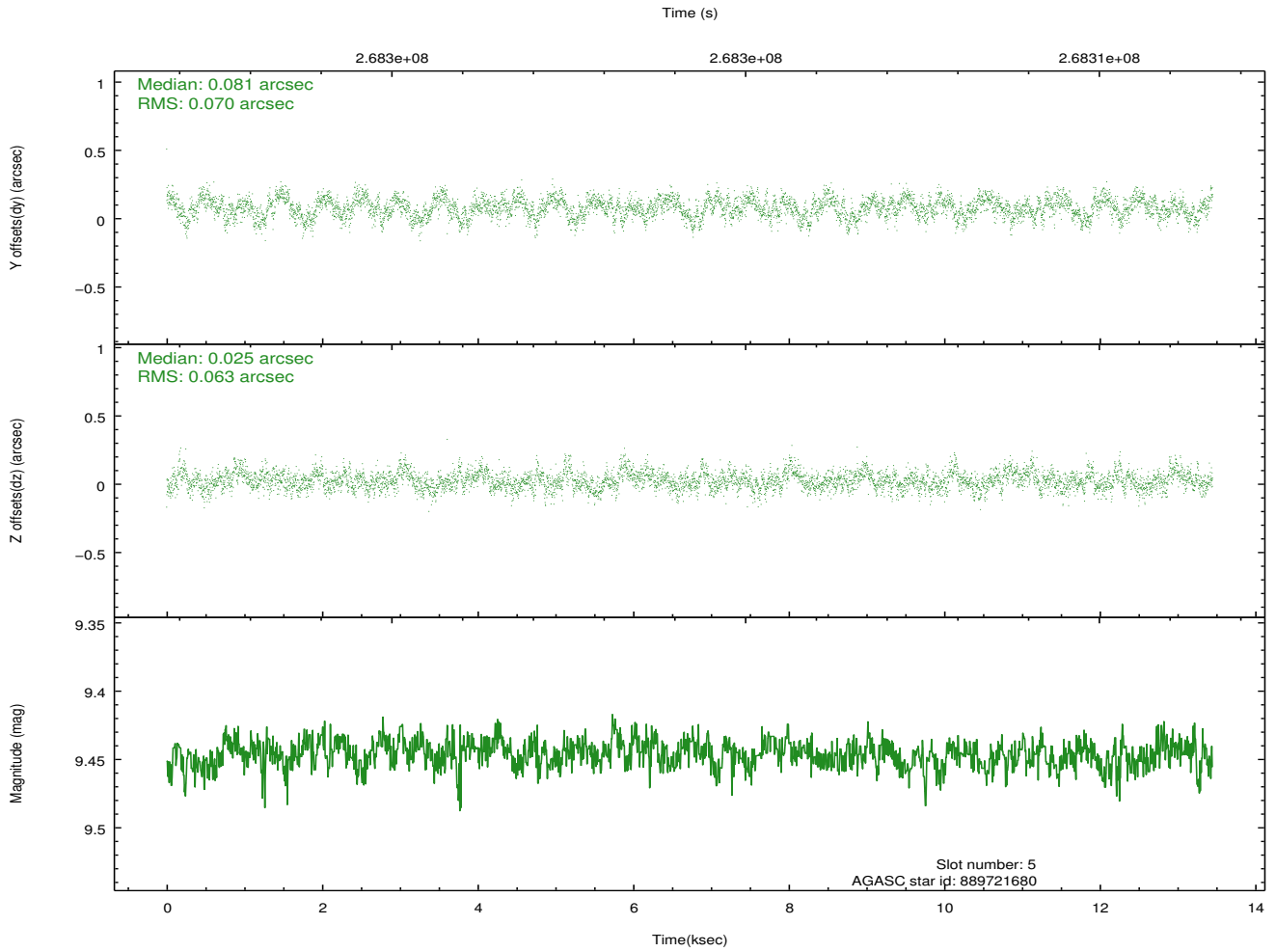
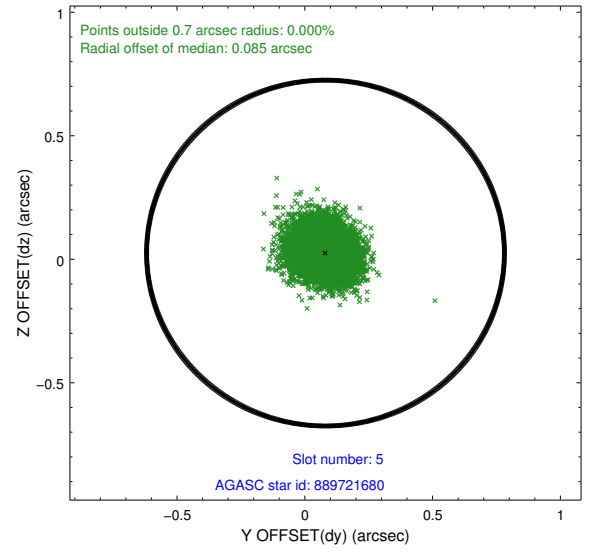
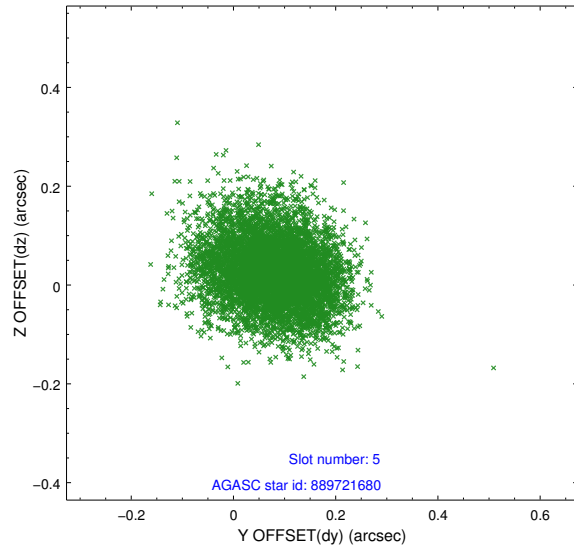
2.4.1 Slot 3



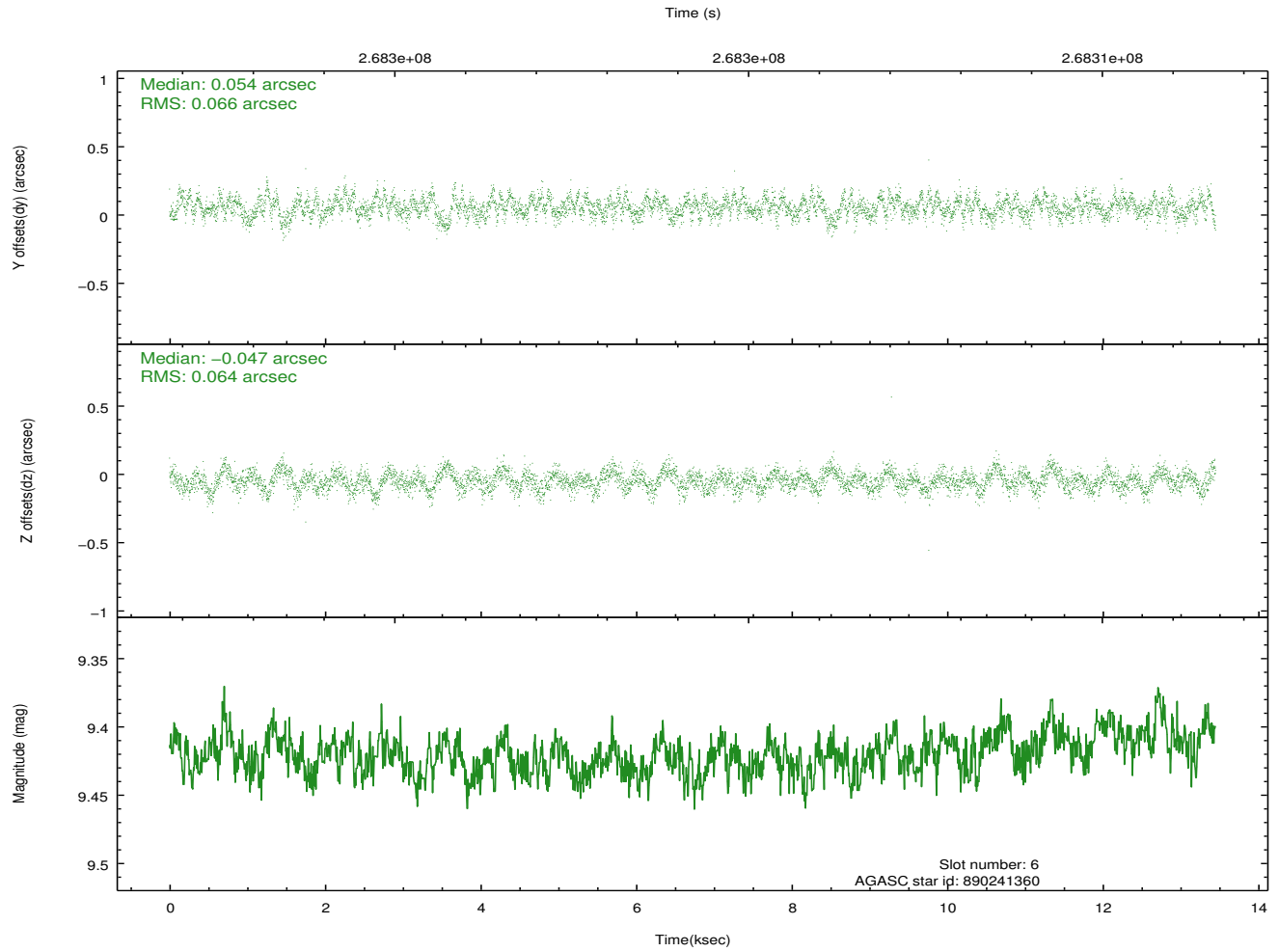
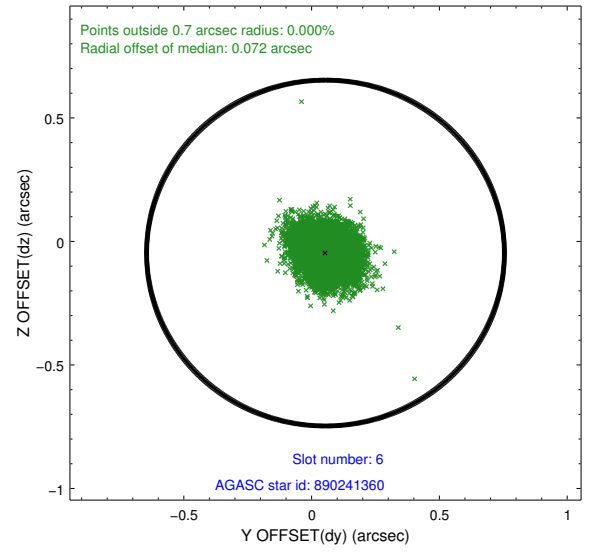
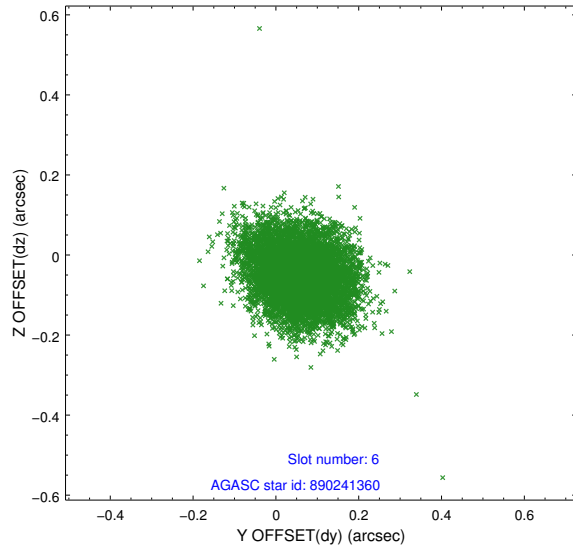
2.4.2 Slot 4



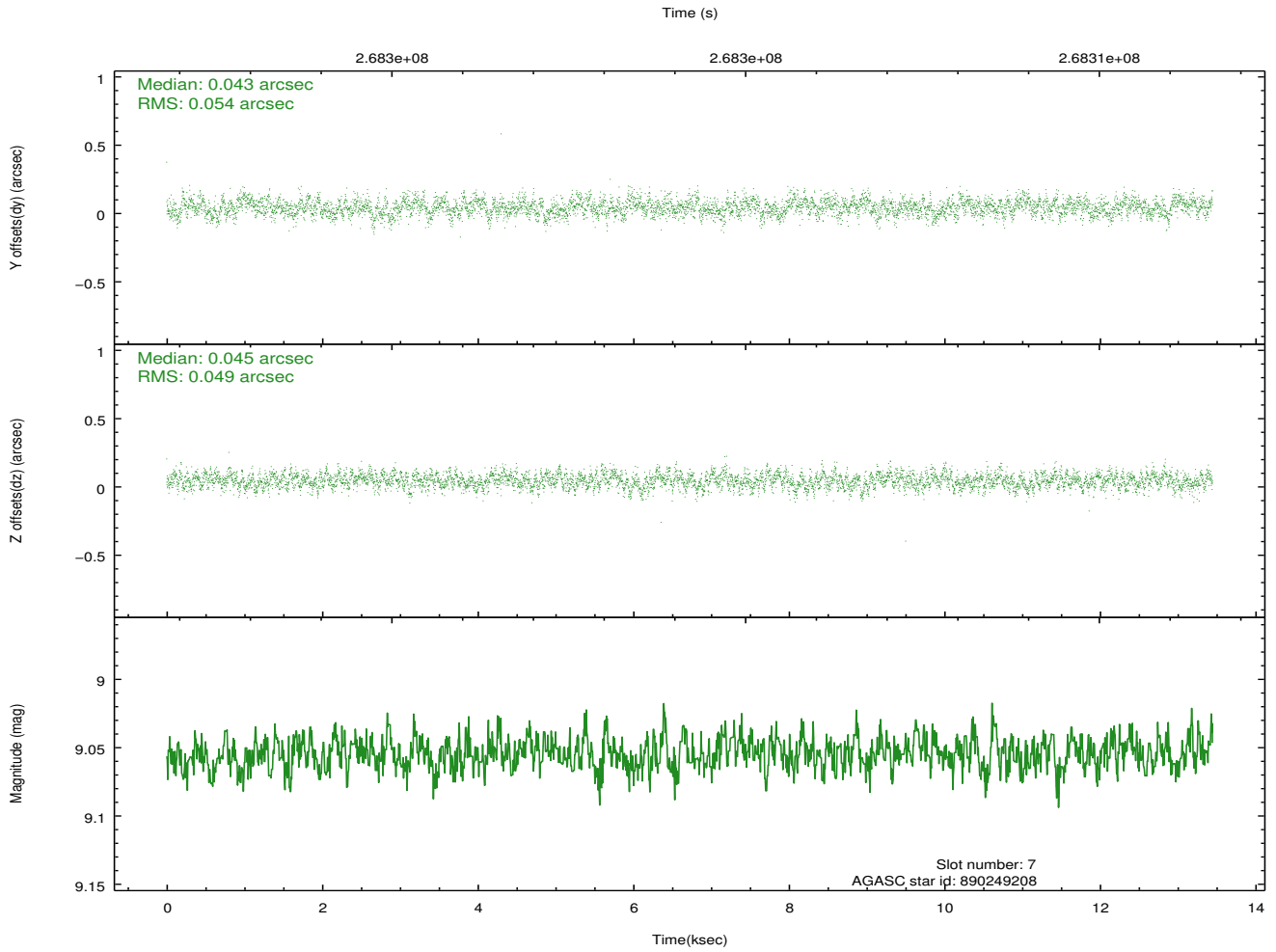
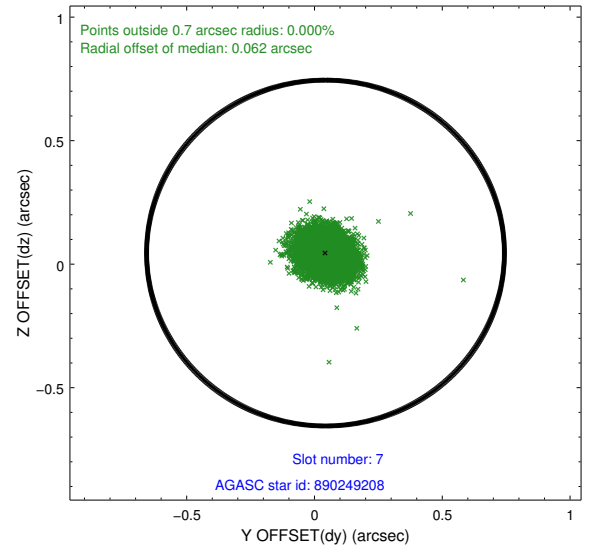
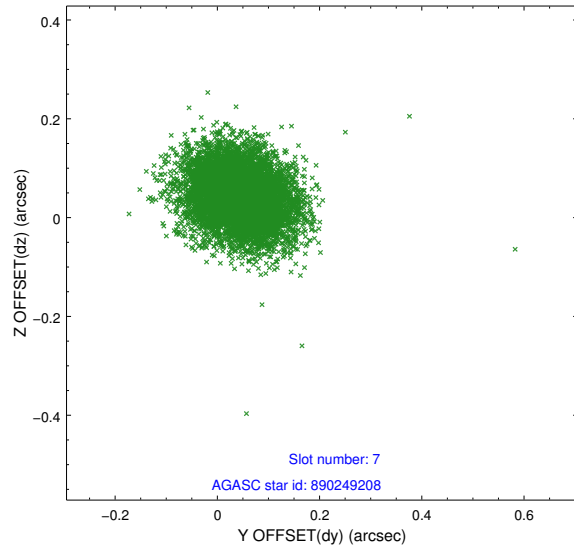
2.4.3 Slot 5



2.4.4 Slot 6

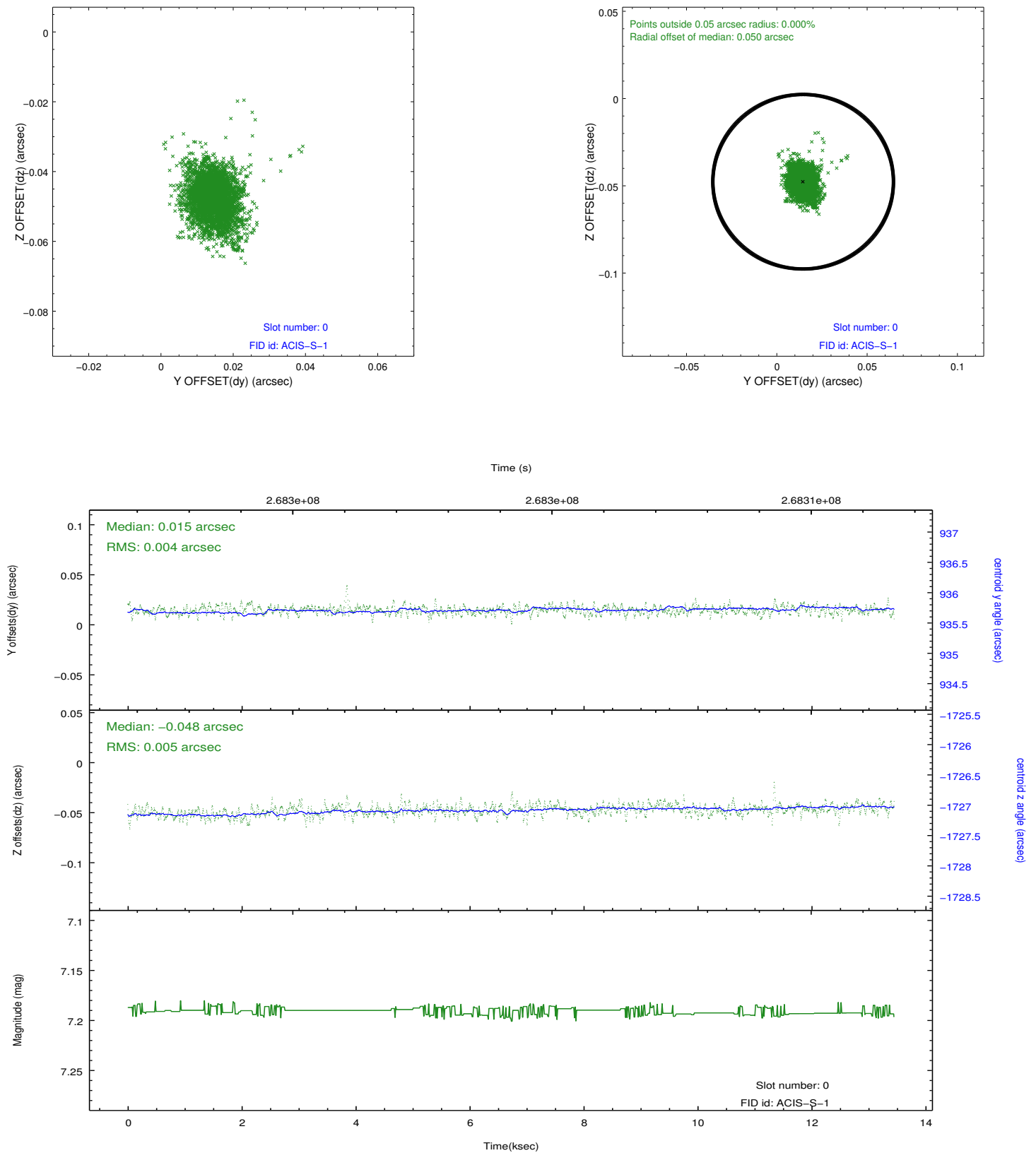


2.4.5 Slot 7

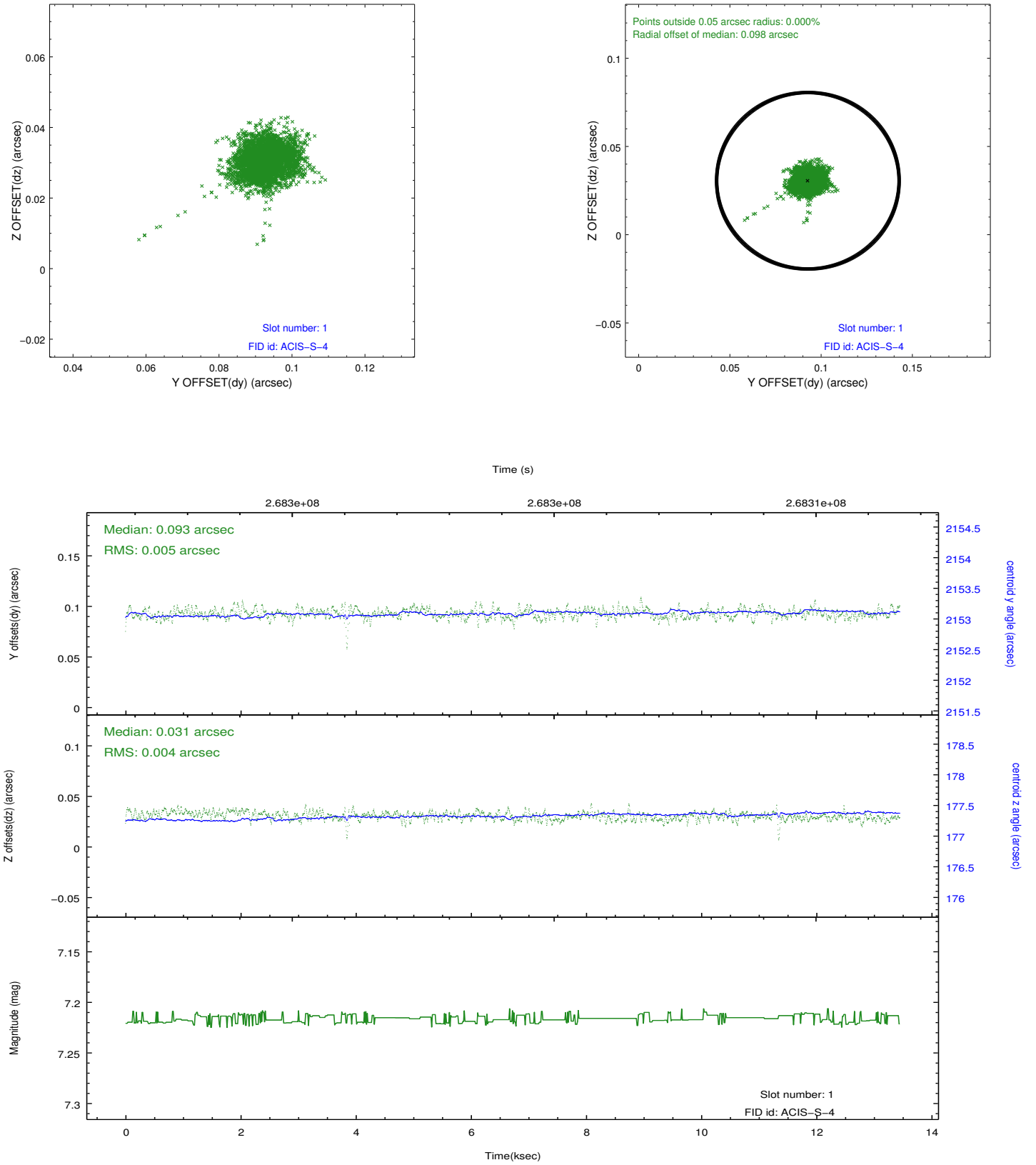


2.5 FID Slots

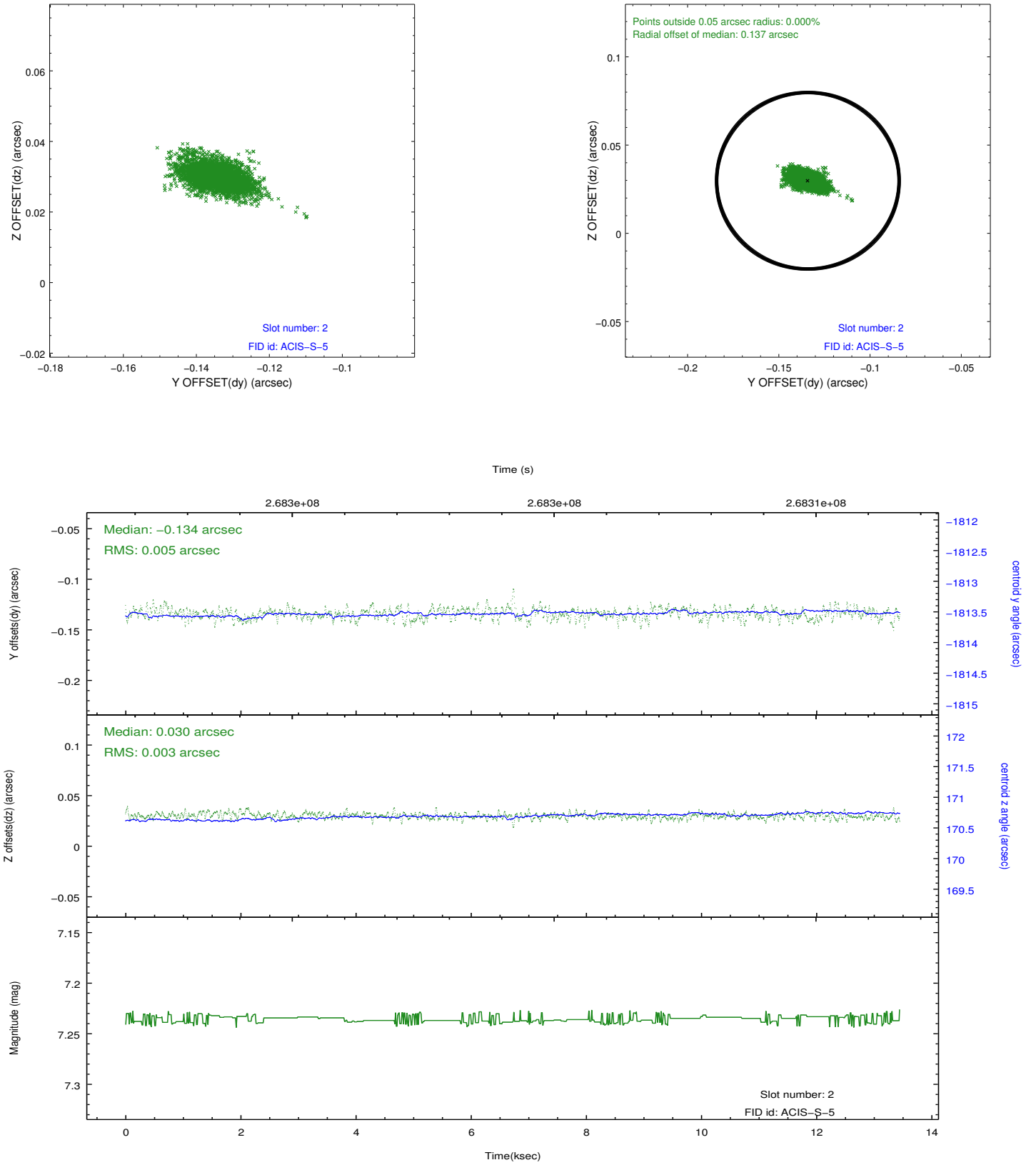
2.5.1 Slot 0



2.5.2 Slot 1



2.5.3 Slot 2



A Summary

A.1 Status

V&V Scientist	Jen Lauer
V&V Date (YYYY-MM-DD)	2012.04.05
V&V Edition	1
V&V Disposition and Status	OK
V&V Charge Time	12.9535999

A.2 Comments