

V&V Reference Report

L2 ASCDS Version : 8.4.3

Observation 7332 - L2 Version 2
Chandra X-Ray Center

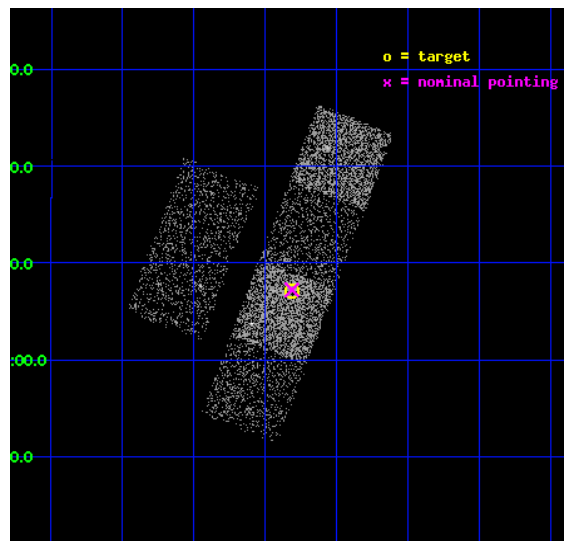
L2 Processing Date : Apr 2 2012

Contents

1	Front	2
2	OBI	3
2.1	OBI	3
2.1.1	Images	3
2.1.2	Bias	3
2.1.3	Parameters	4
2.1.4	Events	4
2.2	Compared Parameters	5
2.3	Aspect	6
2.4	Star Slots	9
2.4.1	Slot 3	9
2.4.2	Slot 4	10
2.4.3	Slot 5	11
2.4.4	Slot 6	12
2.4.5	Slot 7	13
2.5	FID Slots	14
2.5.1	Slot 0	14
2.5.2	Slot 1	15
2.5.3	Slot 2	16
A	Summary	17
A.1	Status	17
A.2	Comments	17

1 Front

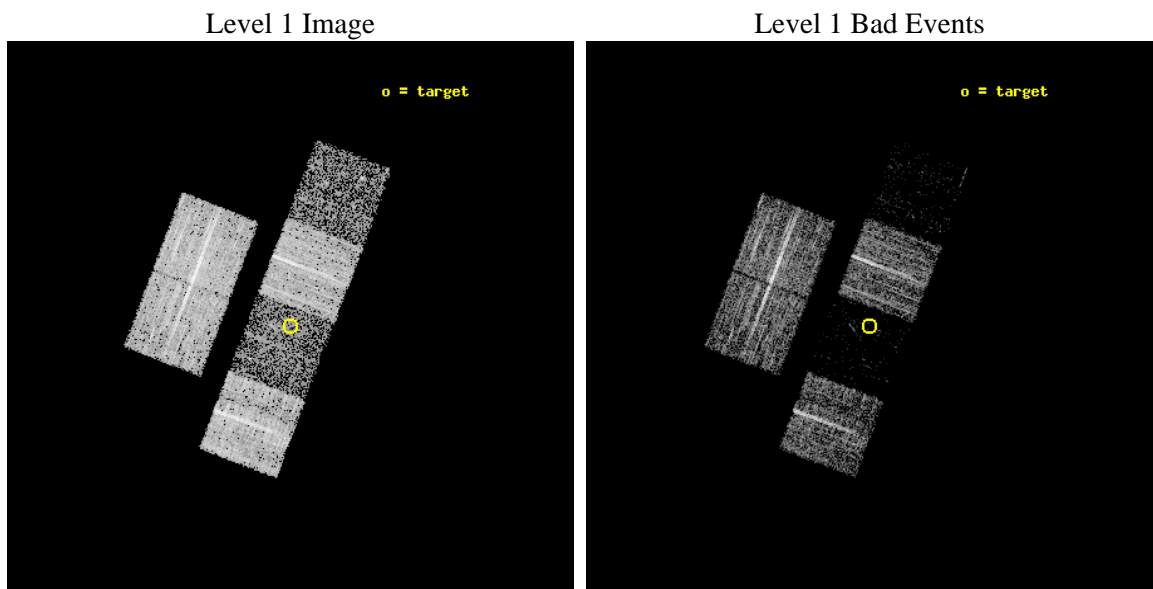
seq_num	100065	Sequence number
obs_id	7332	Observation id
title	An Extremely Close Encounter with the Disintegrating Comet 73P/SW3	
observer	Dr. Scott Wolk	Principal investigator
object	73P/Schwassmann-Wachmann 3-B	Source name
dtcycle	0	
cycle	P	events from which exps? Prim/Second/Both
ra_targ	359.702341	Observer's specified target RA [deg]
dec_targ	5.11874	Observer's specified target Dec [deg]
ra_nom	359.70345664758	Nominal RA [deg]
dec_nom	5.1204134637456	Nominal Dec [deg]
roll_nom	110.91601900704	Nominal Roll [deg]
revision	2	Processing version of data
ontime	4185.5999844074	Sum of GTIs [s]
livetime	4132.5993971391	Livetime [s]
ontime2	4185.5999844074	Sum of GTIs [s]
ontime3	4185.5999844074	Sum of GTIs [s]
ontime5	4185.5999844074	Sum of GTIs [s]
ontime6	4185.5999844074	Sum of GTIs [s]
ontime7	4185.5999844074	Sum of GTIs [s]
ontime8	4185.5999844074	Sum of GTIs [s]
l2events	10339	Number of level 2 events



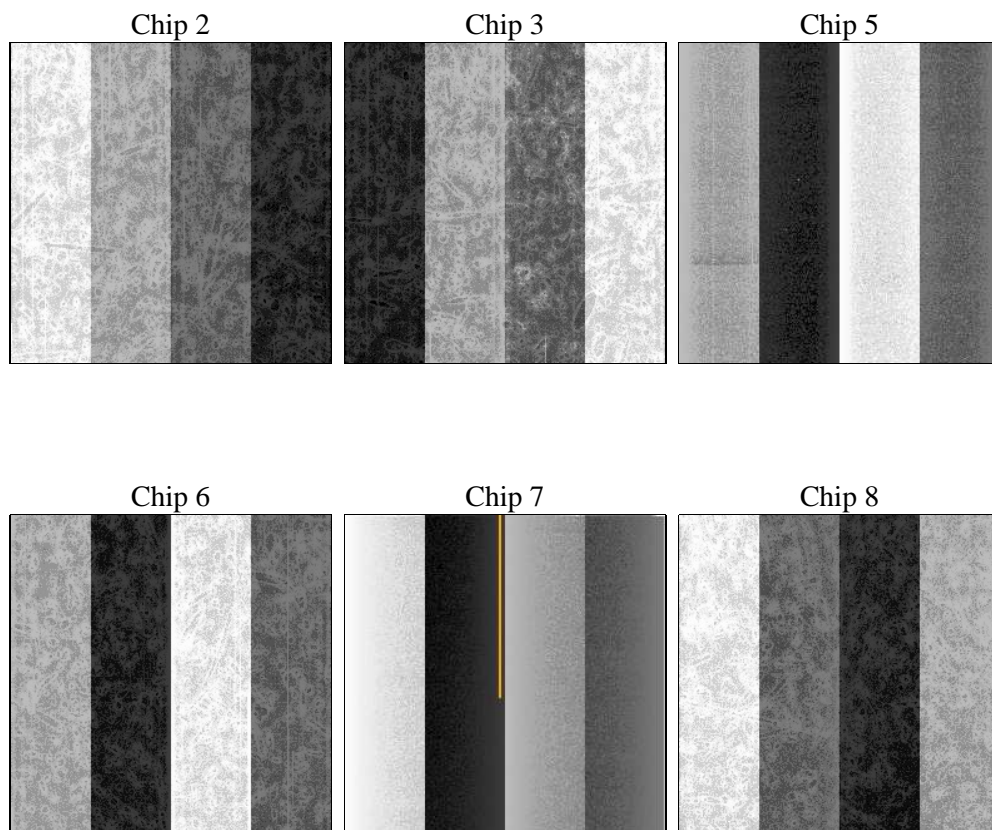
2 OBI

2.1 OBI

2.1.1 Images



2.1.2 Bias



2.1.3 Parameters

obi_num	0	Obi number	sched_exp_time	4000.000000	[s] Scheduled observation exposure time
ascdsver	8.4.3	Processing system revision	ontime	4185.5999844074	Sum of GTIs [s]
caldsver	4.4.9	 	ontime2	4185.5999844074	Sum of GTIs [s]
date	2012-04-02T03:14:26	Date and time of file creation	ontime3	4185.5999844074	Sum of GTIs [s]
revision	2	Processing version of data	ontime5	4185.5999844074	Sum of GTIs [s]
			ontime6	4185.5999844074	Sum of GTIs [s]
			ontime7	4185.5999844074	Sum of GTIs [s]
			ontime8	4185.5999844074	Sum of GTIs [s]
			l1events	117659	Number of level 1 events

2.1.4 Events

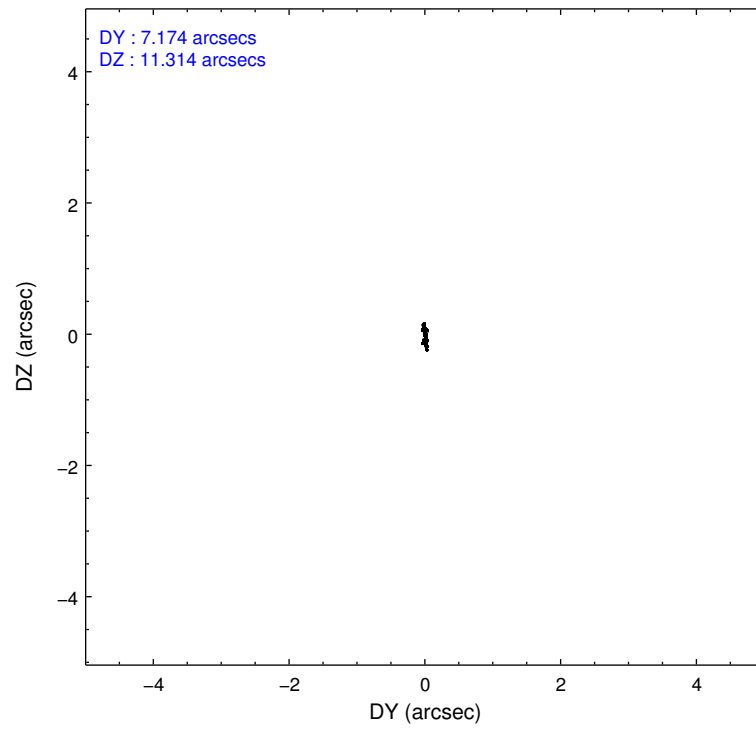
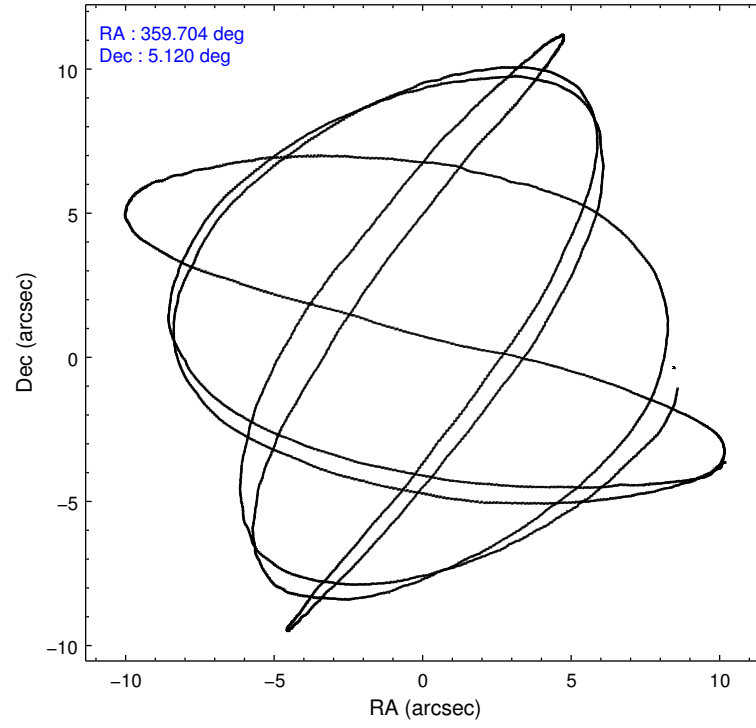
	ccd 2	ccd 3	ccd 5	ccd 6	ccd 7	ccd 8
level 1 events	30124	24325	5185	25381	5149	27495
rejected events	28838	23244	1744	24028	1219	21083
rejected %	95%	95%	33%	94%	23%	76%

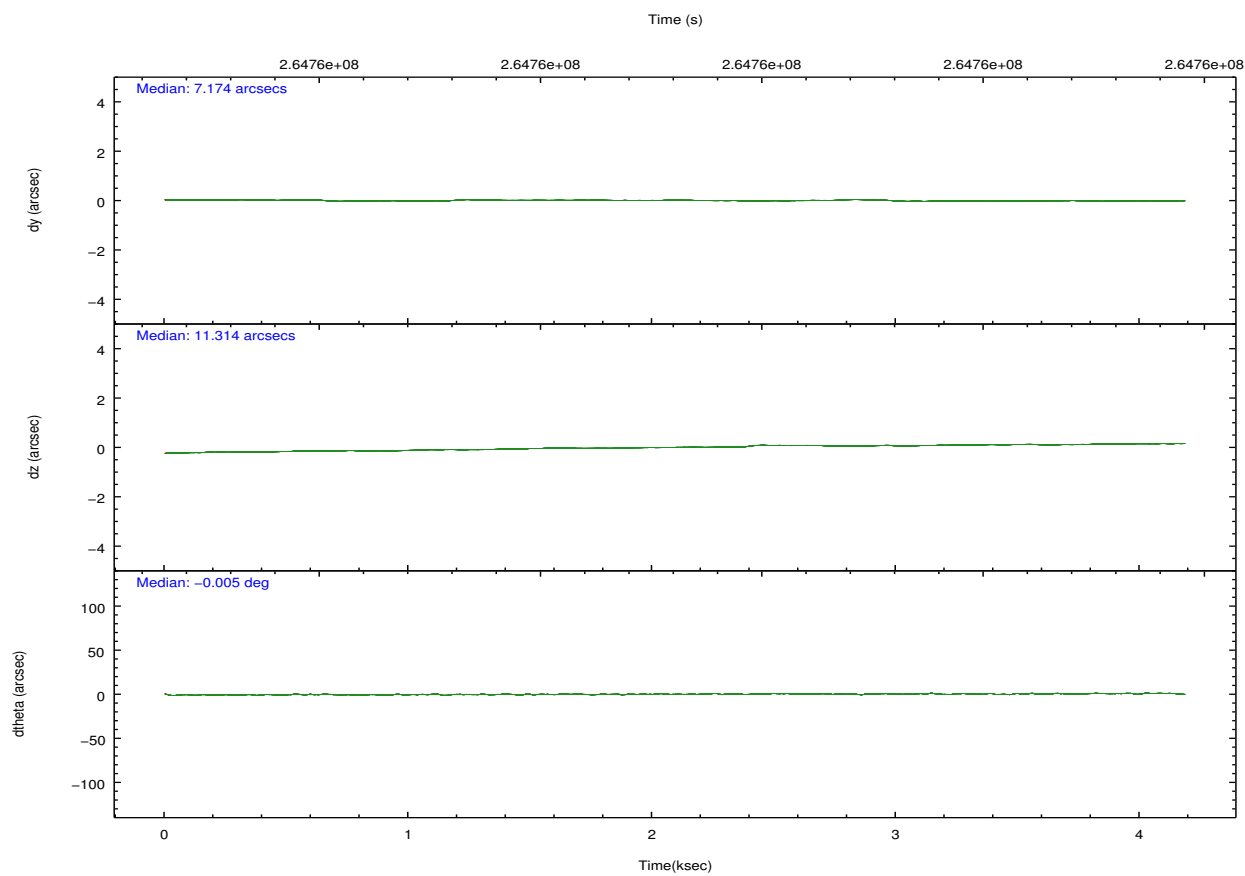
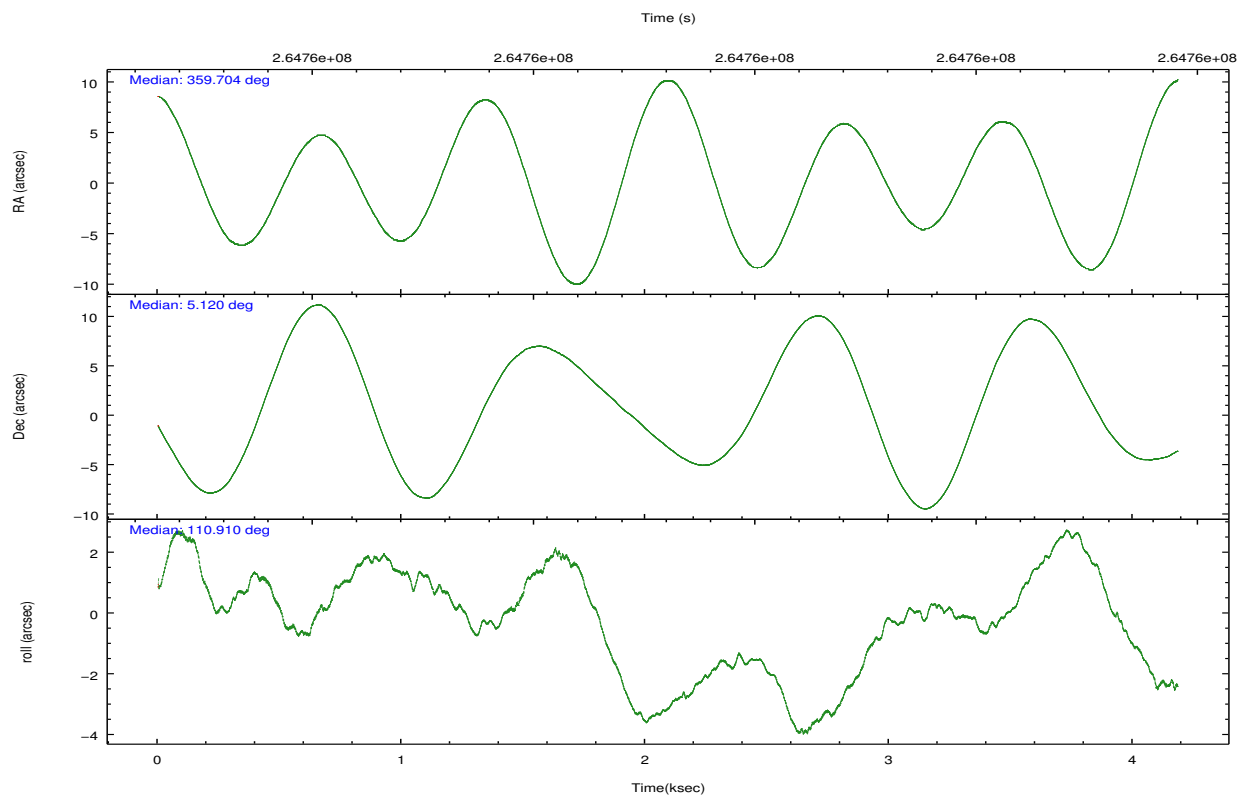
	ccd 2	ccd 3	ccd 5	ccd 6	ccd 7	ccd 8
grade 0 events	586	552	1015	718	1459	1854
	1%	2%	19%	2%	28%	6%
grade 1 events	11	9	36	6	20	17
	0%	0%	0%	0%	0%	0%
grade 2 events	301	170	1336	291	1146	1678
	0%	0%	25%	1%	22%	6%
grade 3 events	167	170	365	189	496	683
	0%	0%	7%	0%	9%	2%
grade 4 events	186	142	412	151	451	676
	0%	0%	7%	0%	8%	2%
grade 5 events	56	39	293	41	159	174
	0%	0%	5%	0%	3%	0%
grade 6 events	142	126	595	106	662	2057
	0%	0%	11%	0%	12%	7%
grade 7 events	28675	23117	1133	23879	756	20356
	95%	95%	21%	94%	14%	74%

2.2 Compared Parameters

Parameter	Planned	Actual	Parameter	Planned	Actual
Instrument	ACIS	ACIS	Obspar format version number	7	7
Detector	ACIS-235678	ACIS-235678	Obspar file type	PREDICTED	ACTUAL
Grating	NONE	NONE	Obspar update status	NONE	UPDATED
Data mode	VFAINT	VFAINT	Number of optional ACIS chips dropped	0	0
Observation mode	POINTING	POINTING	On-chip summing requested	N	N
[deg] Pointing RA	359.724918	359.7034566475823	Subarray requested	NONE	NONE
[deg] Pointing Dec	5.103619	5.120413463745621	Alternating exposures requested	N	N
[deg] Pointing Roll	110.757487	110.9160190070362	[s] Primary exposure time	0.000000	3.2
[mm] SIM focus pos	-0.684267	-0.6828225247311905			
[mm] SIM defocus	0	0.001444936568705701			
[mm] SIM translation stage pos	-190.132523	-190.1400660498719			
[mm] SIM translation stage offset	0	0.00754346686406393			
[s] Observation start time (MET)	264758702.184000	264758325.95036			
Observation start date	2006-05-23T08:03:57	2006-05-23T07:58:45			
[s] Observation end time (MET)	264762702.184000	264762835.95057			
Observation end date	2006-05-23T09:10:37	2006-05-23T09:13:55			
Read mode	TIMED	TIMED			

2.3 Aspect



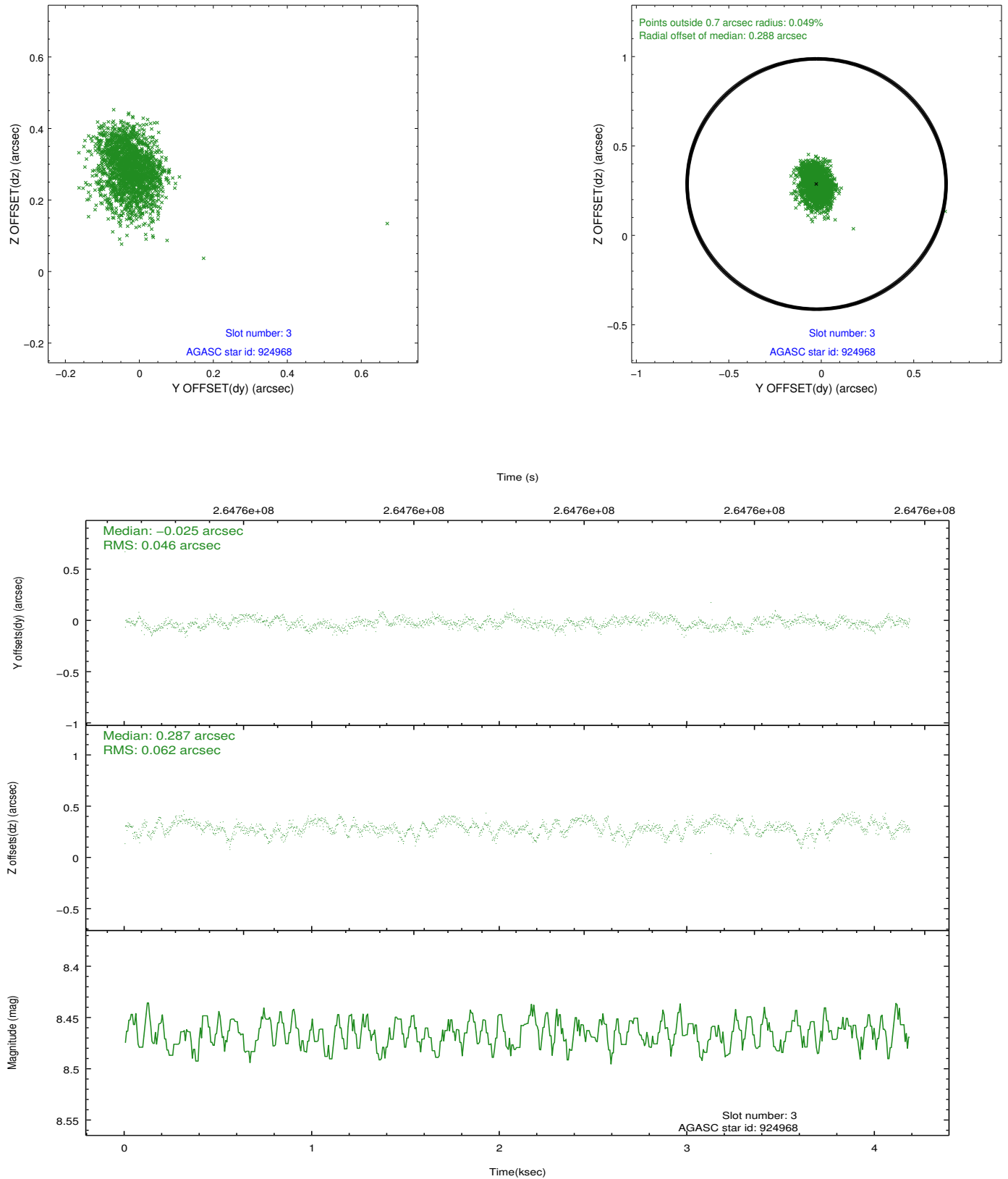


Slot Statistics

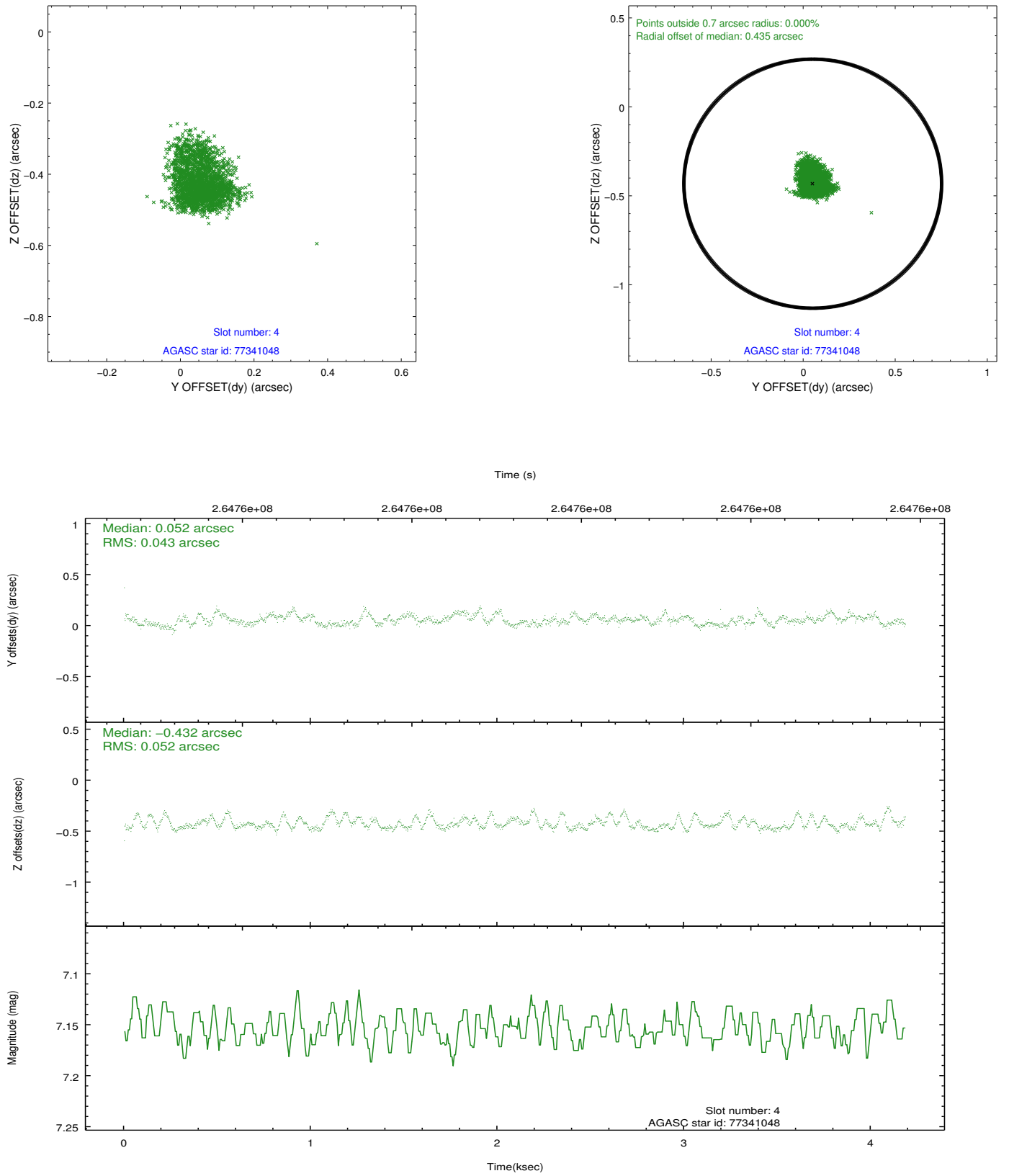
slot	status	id	mag	n_pts	med_dy	med_dz	dr1	dr2	ra	dec	mean_y	mean_z
0	FID	ACIS-S-2	7.10	1021	-0.038	-0.011	0.007	0.012	0.000000	0.000000	-759.94	-1732.61
1	FID	ACIS-S-4	7.21	1020	0.084	0.022	0.006	0.010	0.000000	0.000000	2152.75	174.41
2	FID	ACIS-S-5	7.23	1021	-0.077	-0.001	0.007	0.012	0.000000	0.000000	-1810.94	169.70
3	GUIDE	924968	8.47	2042	-0.025	0.287	0.081	0.130	0.398850	5.054942	-1018.48	-2197.99
4	GUIDE	77341048	7.15	2042	0.052	-0.432	0.072	0.117	359.197162	4.725123	-602.60	2251.42
5	GUIDE	77341432	9.27	2041	0.140	0.020	0.091	0.157	359.793064	4.723435	-1366.25	257.37
6	GUIDE	77737864	9.37	2042	-0.099	0.194	0.104	0.163	359.593574	5.648848	2001.98	-254.95
7	GUIDE	77738096	8.78	2041	-0.074	-0.082	0.070	0.108	359.448323	5.404347	1365.21	543.28

2.4 Star Slots

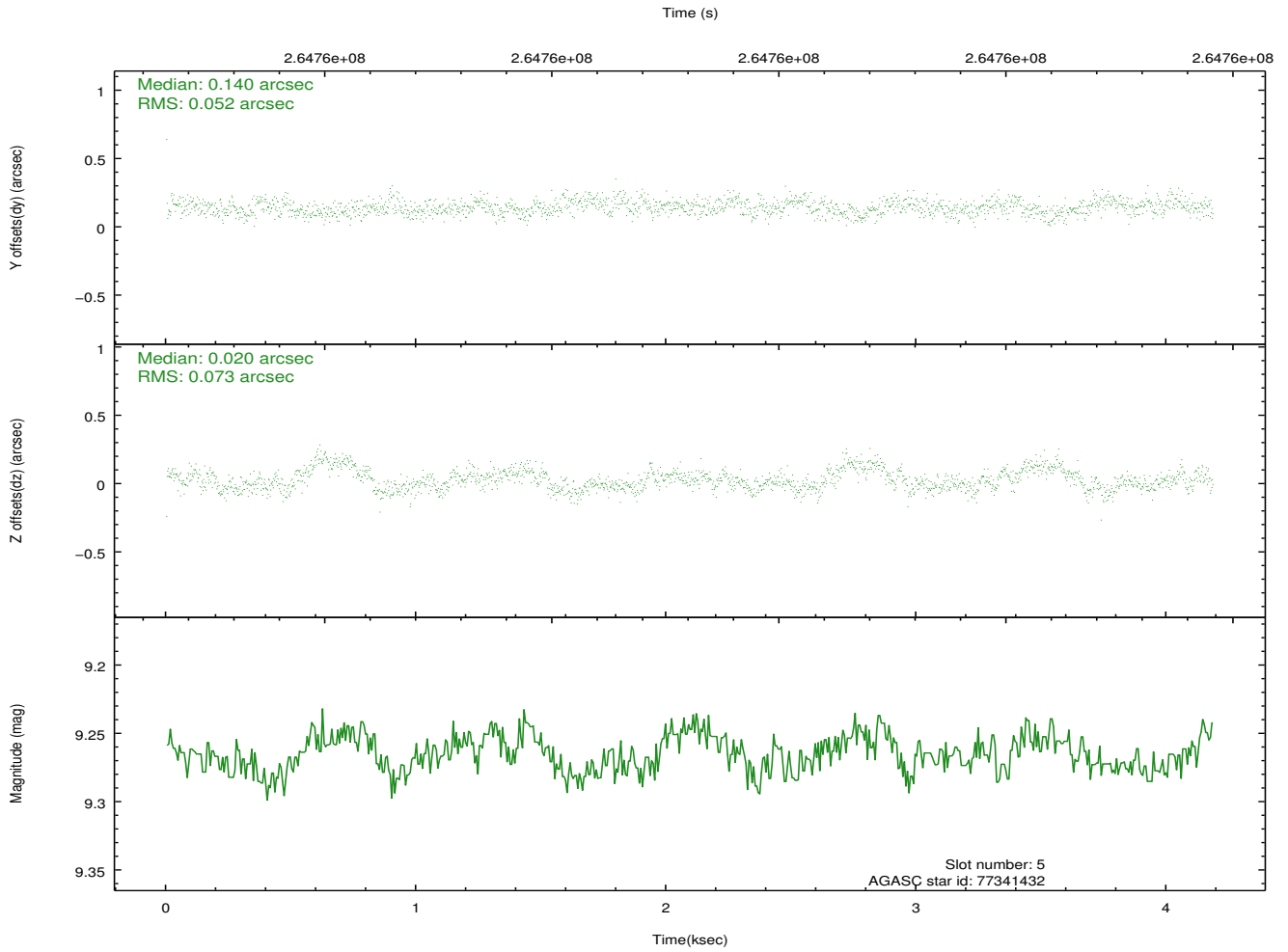
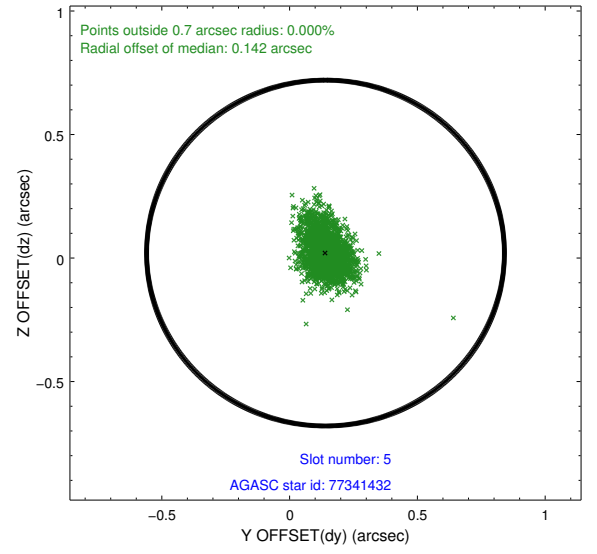
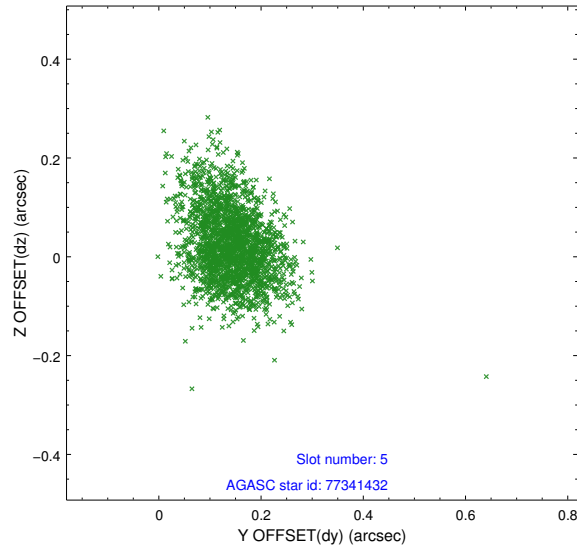
2.4.1 Slot 3



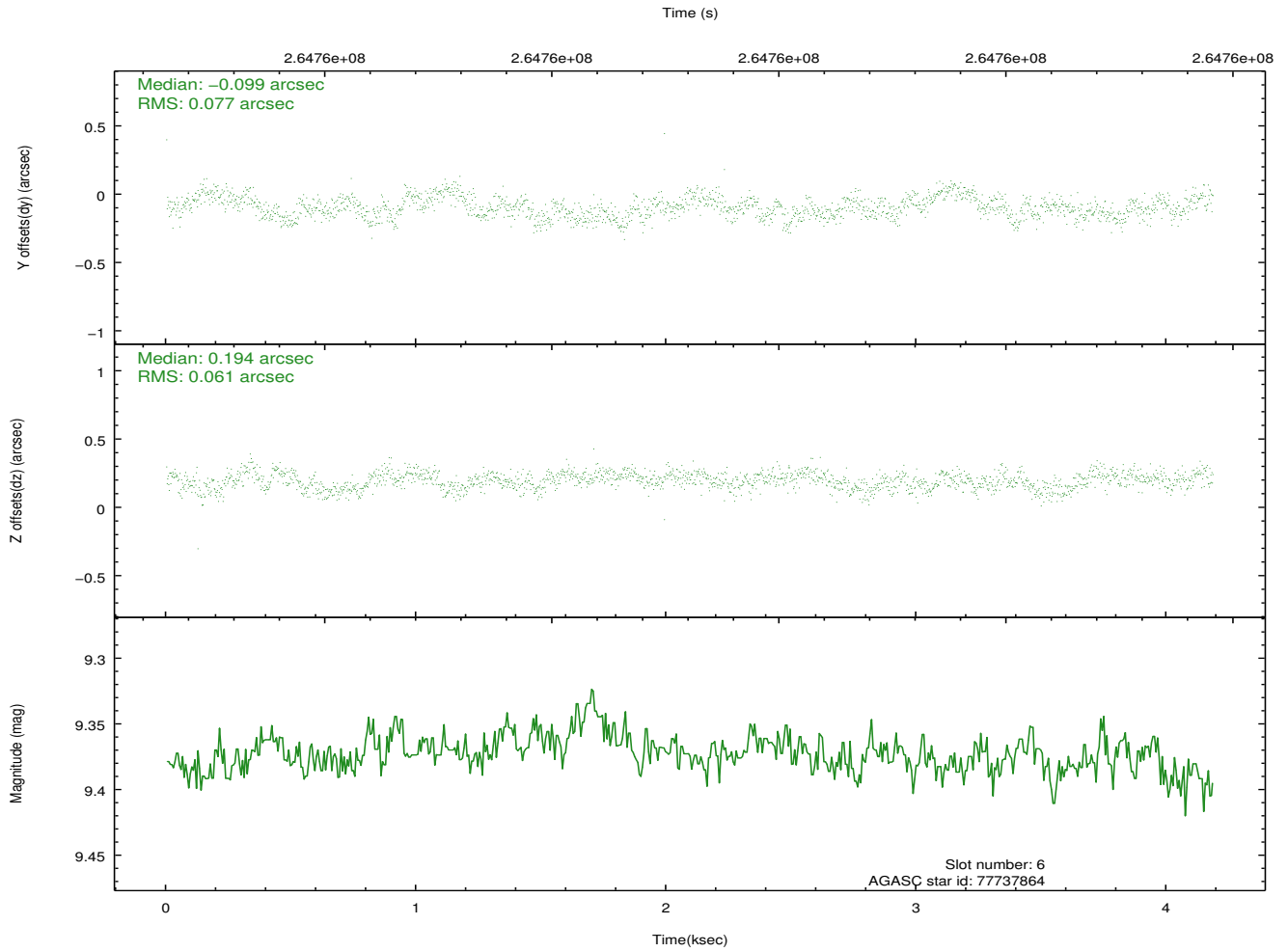
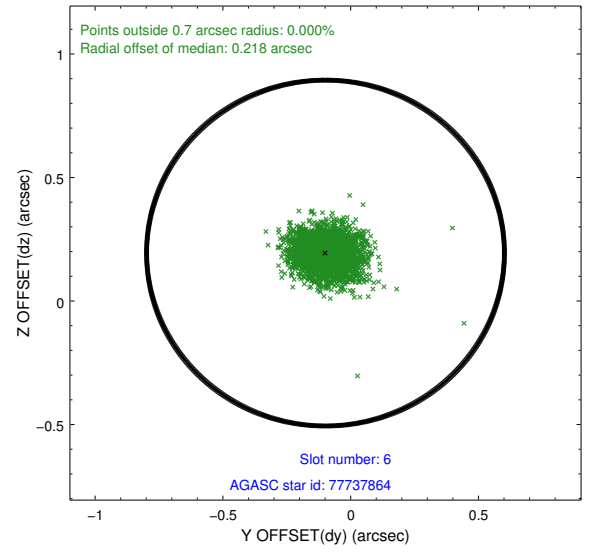
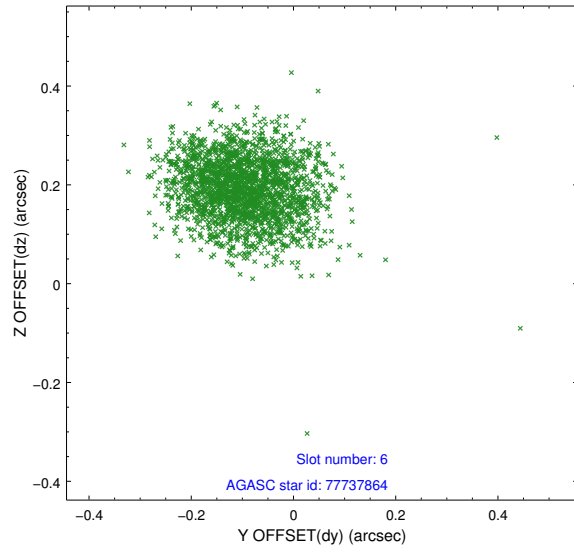
2.4.2 Slot 4



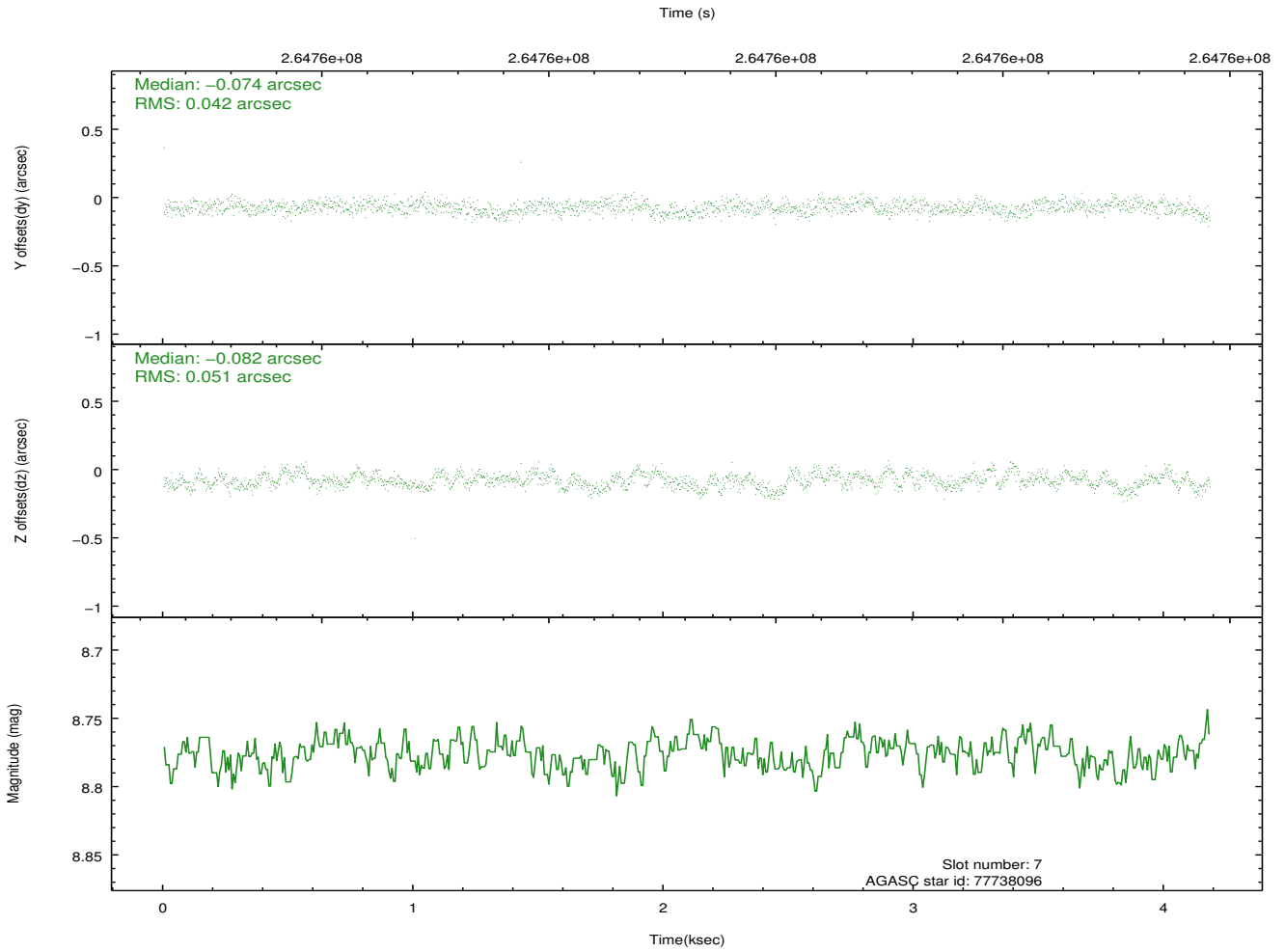
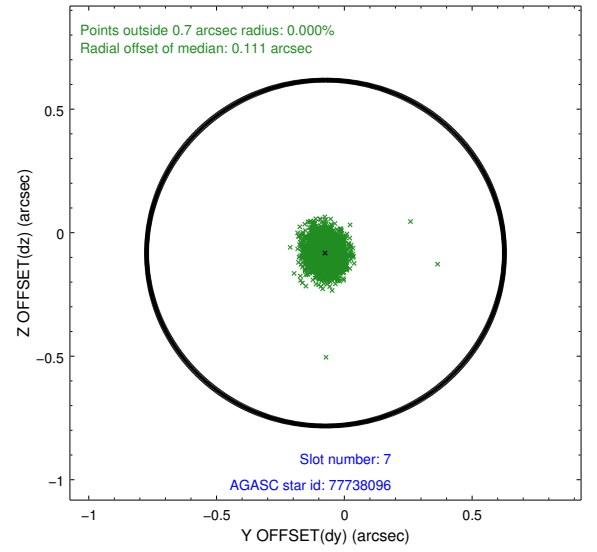
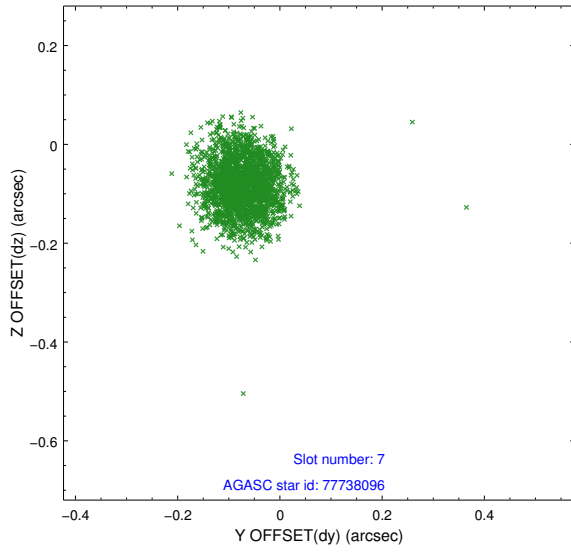
2.4.3 Slot 5



2.4.4 Slot 6

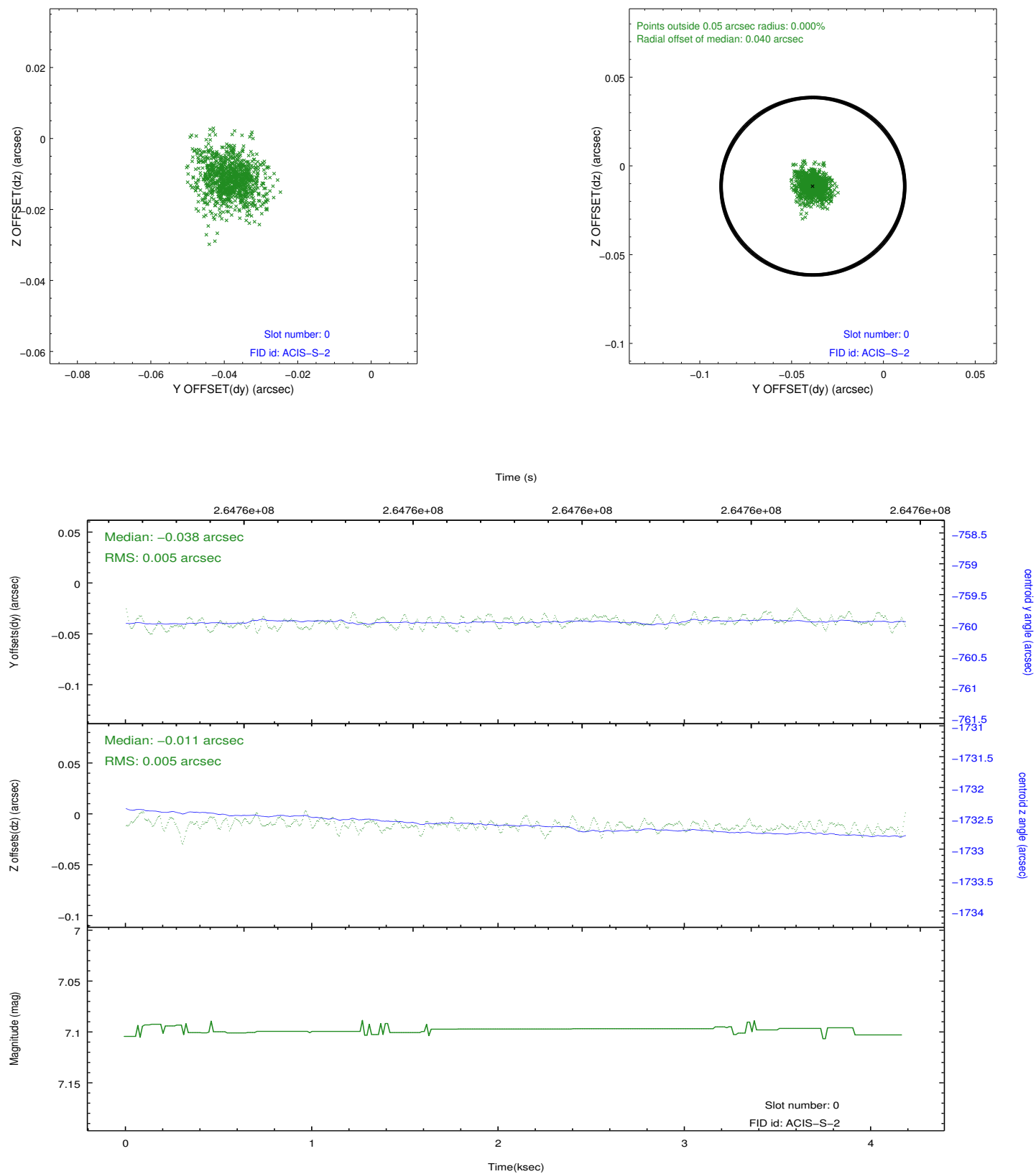


2.4.5 Slot 7

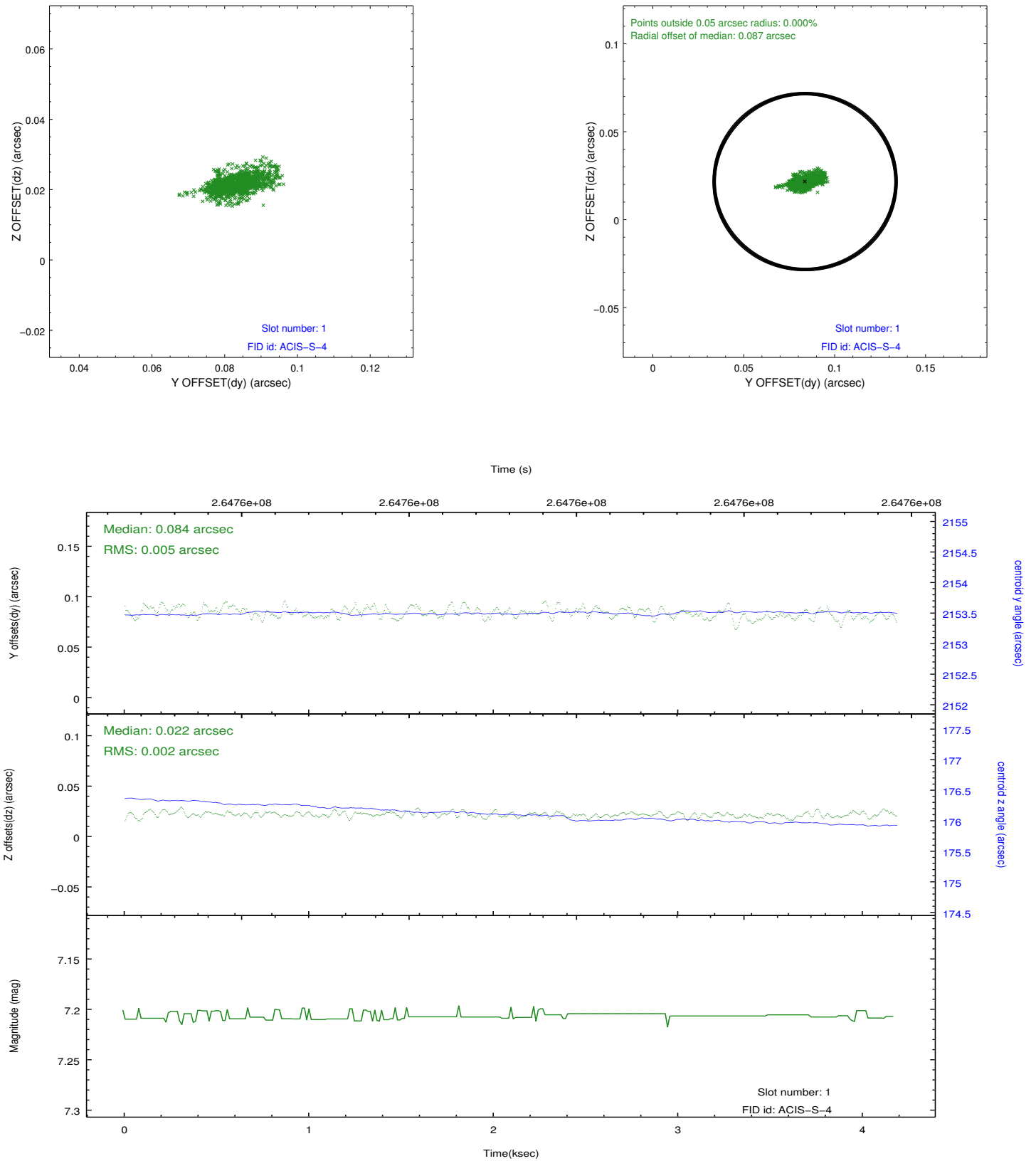


2.5 FID Slots

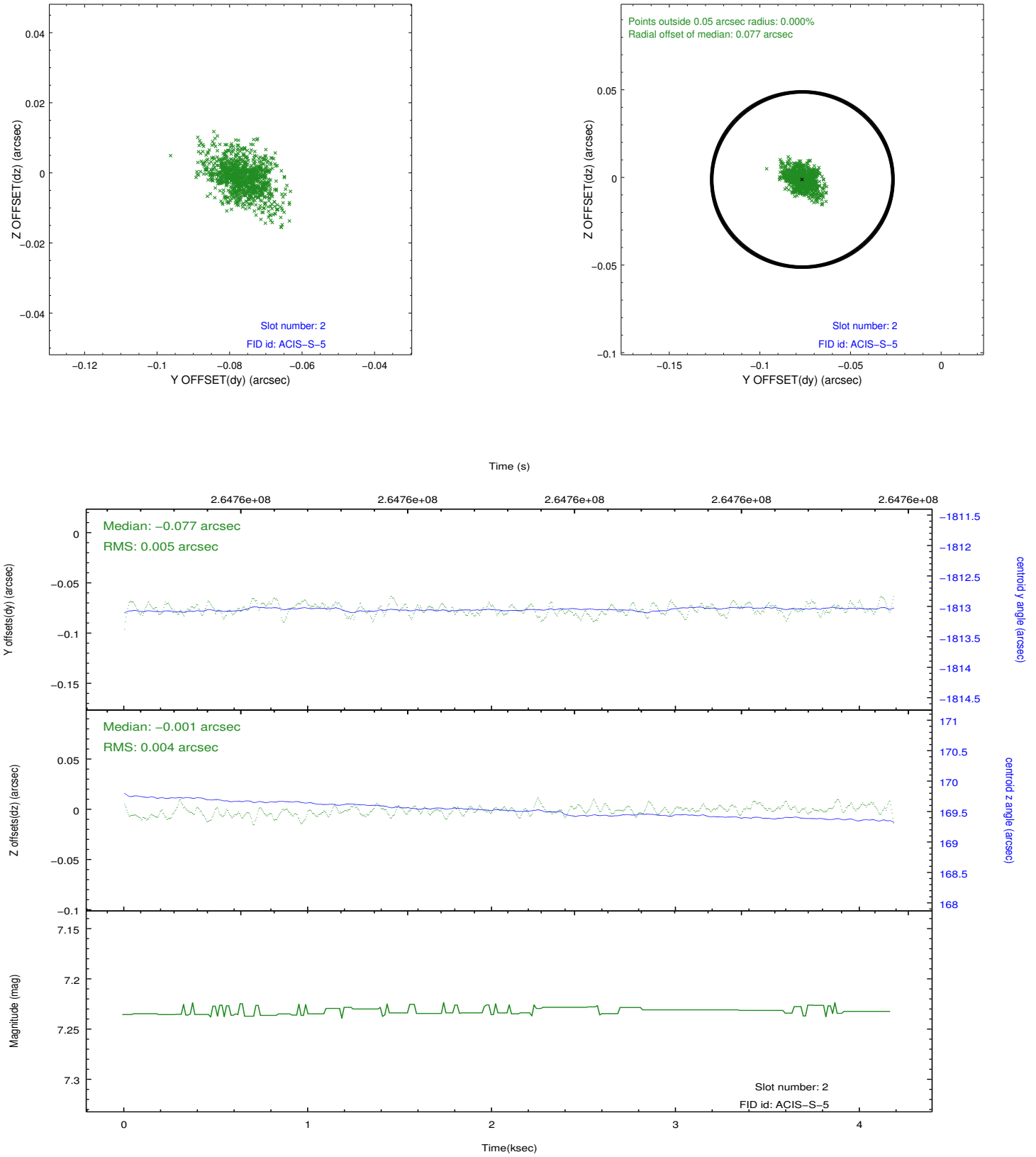
2.5.1 Slot 0



2.5.2 Slot 1



2.5.3 Slot 2



A Summary

A.1 Status

V&V Scientist	Jen Lauer
V&V Date (YYYY-MM-DD)	2012.04.03
V&V Edition	1
V&V Disposition and Status	OK
V&V Charge Time	4.18559998

A.2 Comments