

# V&V Reference Report

## L2 ASCDS Version : 7.6.7.1

Observation 5891 - L2 Version 002  
Chandra X-Ray Center

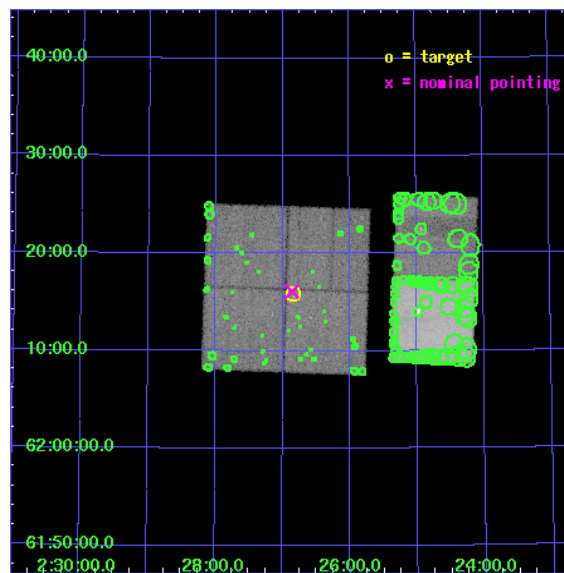
L2 Processing Date : Mar 14 2006

## Contents

<b>1</b>	<b>Front</b>	<b>2</b>
<b>2</b>	<b>OBI</b>	<b>3</b>
2.1	OBI . . . . .	3
2.1.1	Images . . . . .	3
2.1.2	Bias . . . . .	3
2.1.3	Parameters . . . . .	4
2.1.4	Events . . . . .	4
2.2	Compared Parameters . . . . .	5
2.3	Aspect . . . . .	6
2.4	Star Slots . . . . .	9
2.4.1	Slot 3 . . . . .	9
2.4.2	Slot 4 . . . . .	10
2.4.3	Slot 5 . . . . .	11
2.4.4	Slot 6 . . . . .	12
2.4.5	Slot 7 . . . . .	13
2.5	FID Slots . . . . .	14
2.5.1	Slot 0 . . . . .	14
2.5.2	Slot 1 . . . . .	15
2.5.3	Slot 2 . . . . .	16
<b>3</b>	<b>Point Sources</b>	<b>17</b>
<b>A</b>	<b>Summary</b>	<b>18</b>
A.1	Status . . . . .	18
A.2	Comments . . . . .	18

# 1 Front

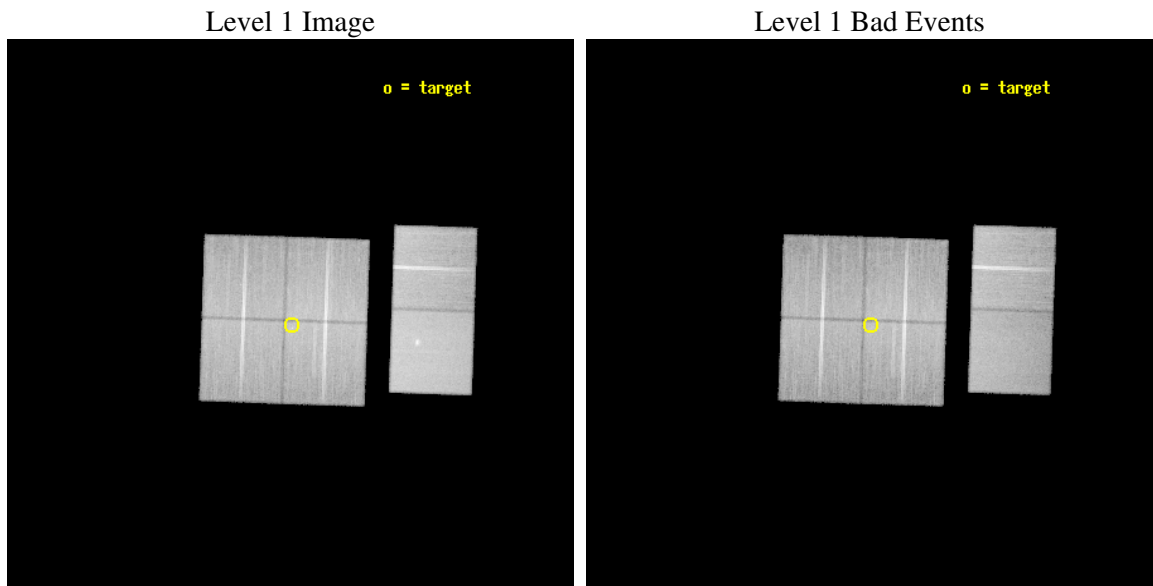
seq_num	900391
obs_id	5891
title	Massive Star Life, Death, and Rebirth in the Perseus Arm
observer	Dr. Leisa Townsley
object	W3 North
dtcycle	0
cycle	P
ra_targ	36.711667
dec_targ	62.264444
ra_nom	36.715268562759
dec_nom	62.268757070645
roll_nom	91.926565919513
revision	2
ontime	47155.158864051
livetime	46558.051849087
ontime0	47155.158854038
ontime1	47158.399824321
ontime2	47151.917883754
ontime3	47155.158864051
ontime6	47158.399824321
ontime7	47158.399824321
l2events	417465



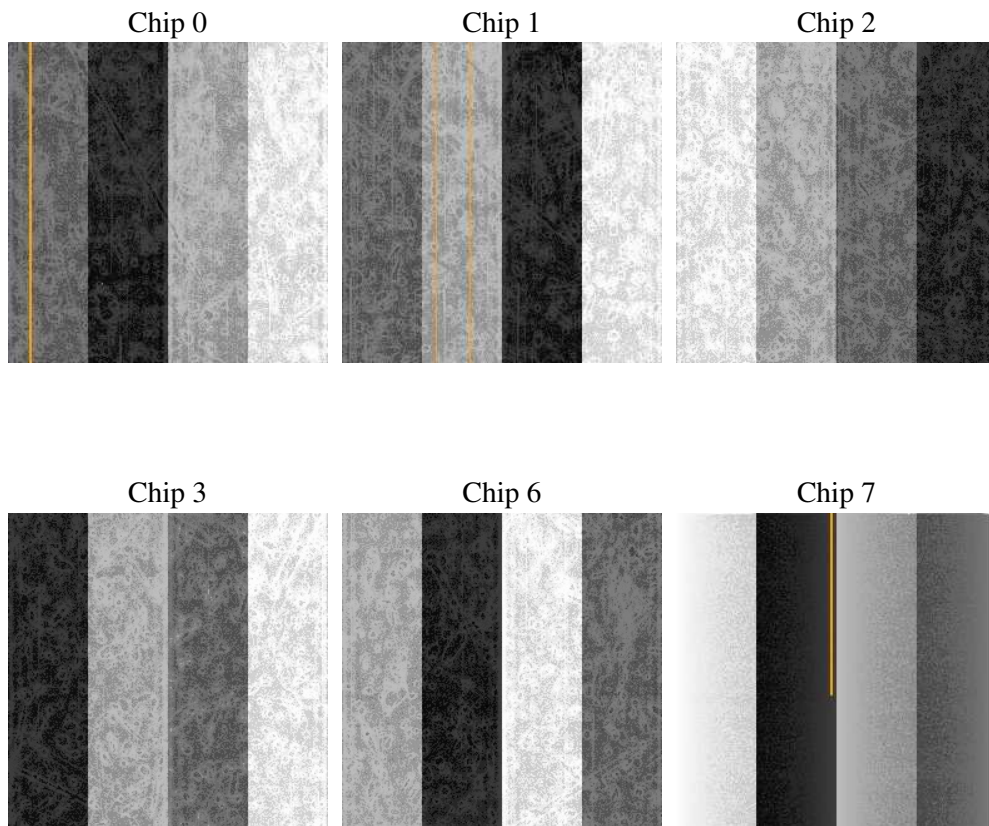
## 2 OBI

### 2.1 OBI

#### 2.1.1 Images



#### 2.1.2 Bias



### 2.1.3 Parameters

obi_num	1
ascdsver	7.6.7.1
caldsver	3.2.1
date	2006-03-14T20:29:17
revision	2

sched_exp_time	47032.045000
ontime	47376.974179119
ontime0	47376.974199057
ontime1	47380.21516934
ontime2	47373.733228773
ontime3	47376.974179119
ontime6	47380.21516934
ontime7	47380.21516934
l1events	2158166

### 2.1.4 Events

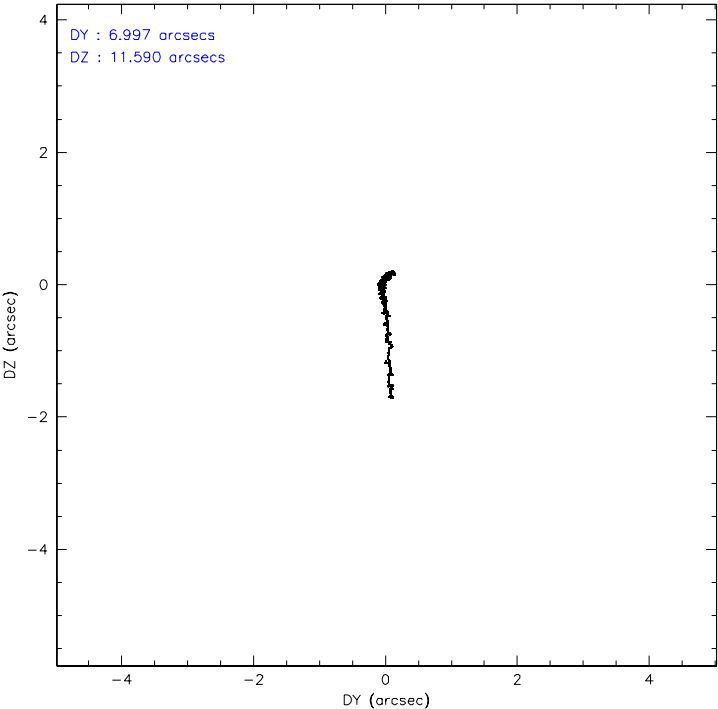
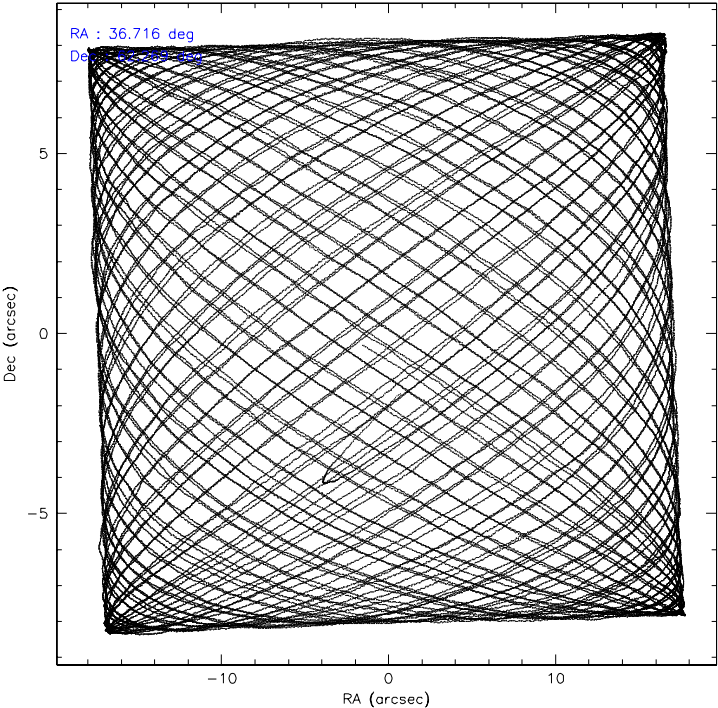
	ccd 0	ccd 1	ccd 2	ccd 3	ccd 6	ccd 7
level 1 events	315199	323709	349471	342757	366523	460507
rejected events	261585	269205	295102	290382	312873	269326
rejected %	82%	83%	84%	84%	85%	58%

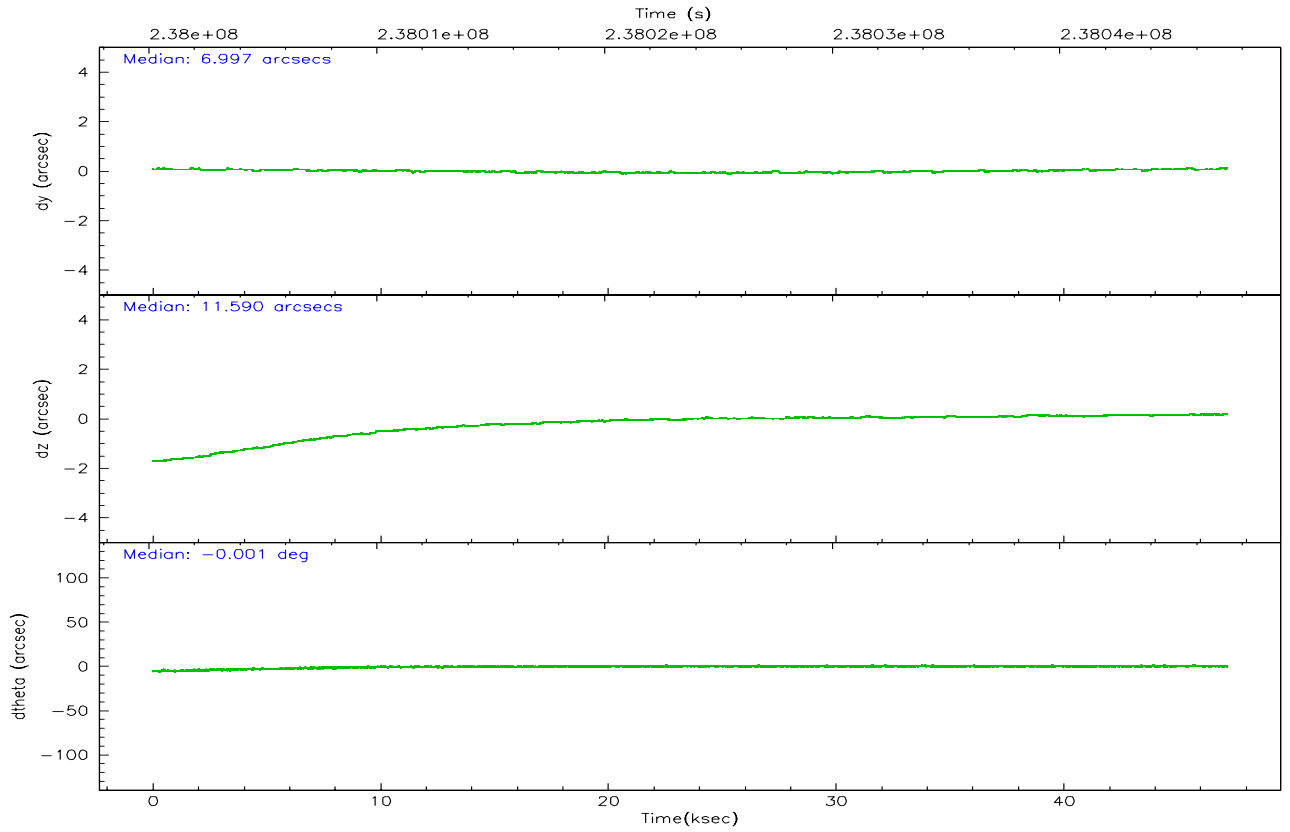
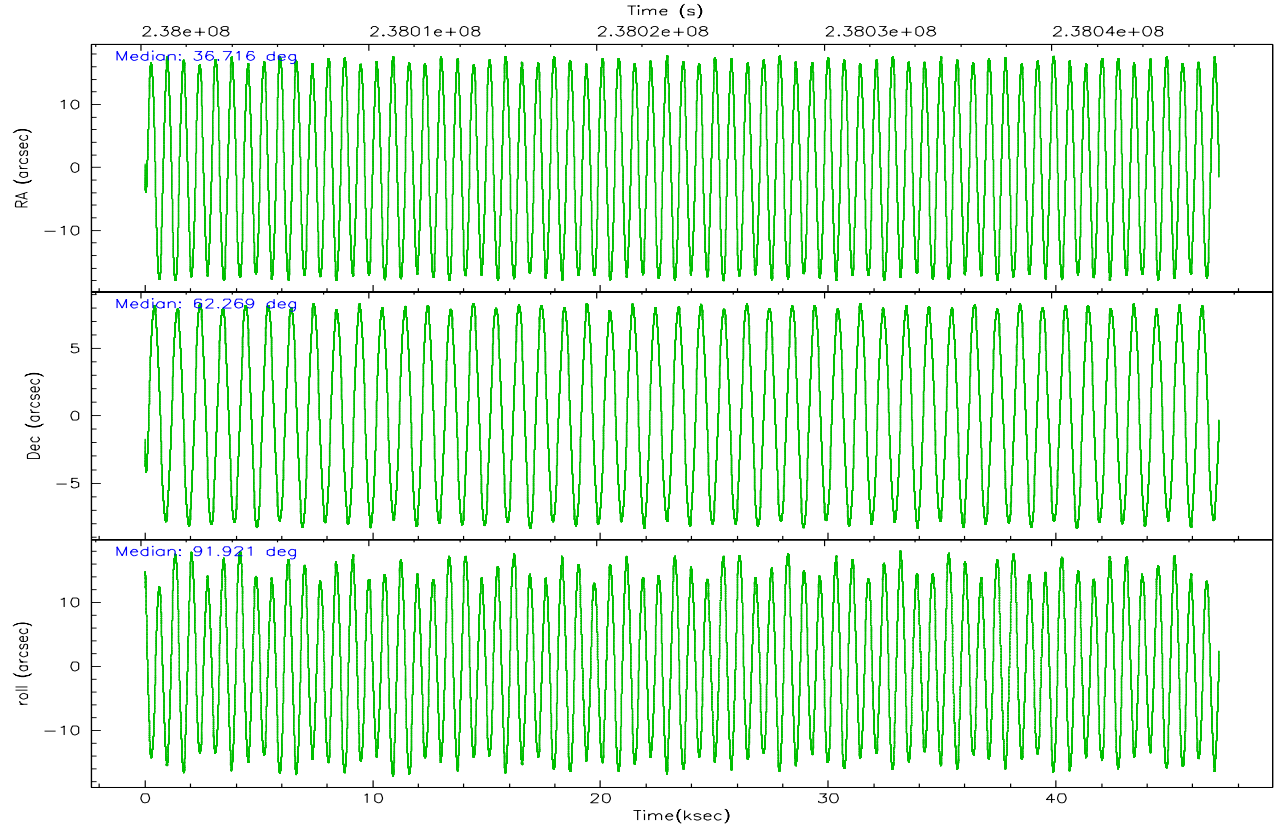
	ccd 0	ccd 1	ccd 2	ccd 3	ccd 6	ccd 7
grade 0 events	24732	22753	26212	24873	23185	11450
	7%	7%	7%	7%	6%	2%
grade 1 events	228	169	240	238	186	325
	0%	0%	0%	0%	0%	0%
grade 2 events	12261	13035	11672	10686	12389	49791
	3%	4%	3%	3%	3%	10%
grade 3 events	3991	4429	3803	4093	4109	9789
	1%	1%	1%	1%	1%	2%
grade 4 events	3954	4231	4400	4034	4048	9448
	1%	1%	1%	1%	1%	2%
grade 5 events	12994	13551	12462	14455	15222	28603
	4%	4%	3%	4%	4%	6%
grade 6 events	8919	10324	8542	8911	10177	111572
	2%	3%	2%	2%	2%	24%
grade 7 events	248120	255217	282140	275467	297207	239529
	78%	78%	80%	80%	81%	52%

## 2.2 Compared Parameters

Parameter	Planned	Actual	Parameter	Planned	Actual
Instrument	ACIS	ACIS	Obspar format version number	6	6
Detector	ACIS-012367	ACIS-012367	Obspar file type	PREDICTED	ACTUAL
Grating	NONE	NONE	Obspar update status	NONE	UPDATED
Data mode	VFAINT	VFAINT	On-chip summing requested	N	N
Observation mode	POINTING	POINTING	Subarray requested	NONE	NONE
Pointing RA	36.746534	36.71526856275903	Alternating exposures requested	N	N
Pointing Dec	62.245585	62.26875707064517	Primary exposure time	0.000000	3.2
Pointing Roll	91.690212	91.92656591951292			
SIM focus pos (mm)	-0.782348	-0.7809083437167272			
SIM defocus (mm)	0	0.001439871863259334			
SIM translation stage pos (mm)	-233.592463	-233.5874344608287			
SIM translation stage offset (mm)	0	-0.005018542100998502			
Observation start time	238000310.184000	237999158.11265			
Observation start date	2005-07-17T15:10:46	2005-07-17T14:52:38			
Observation end time	238047342.184000	238047566.81487			
Observation end date	2005-07-18T04:14:38	2005-07-18T04:19:26			
Read mode	TIMED	TIMED			

2.3 Aspect



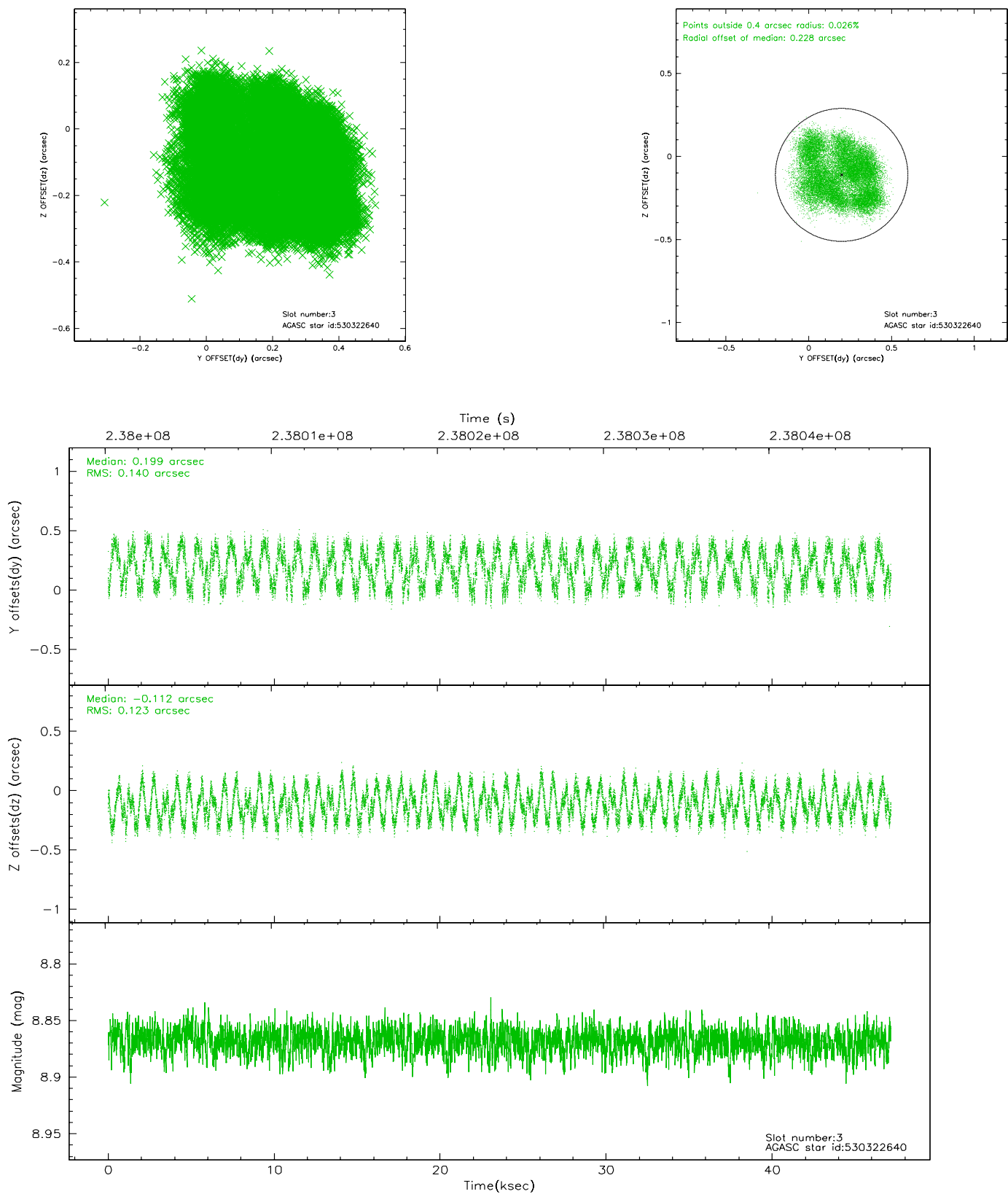


### Slot Statistics

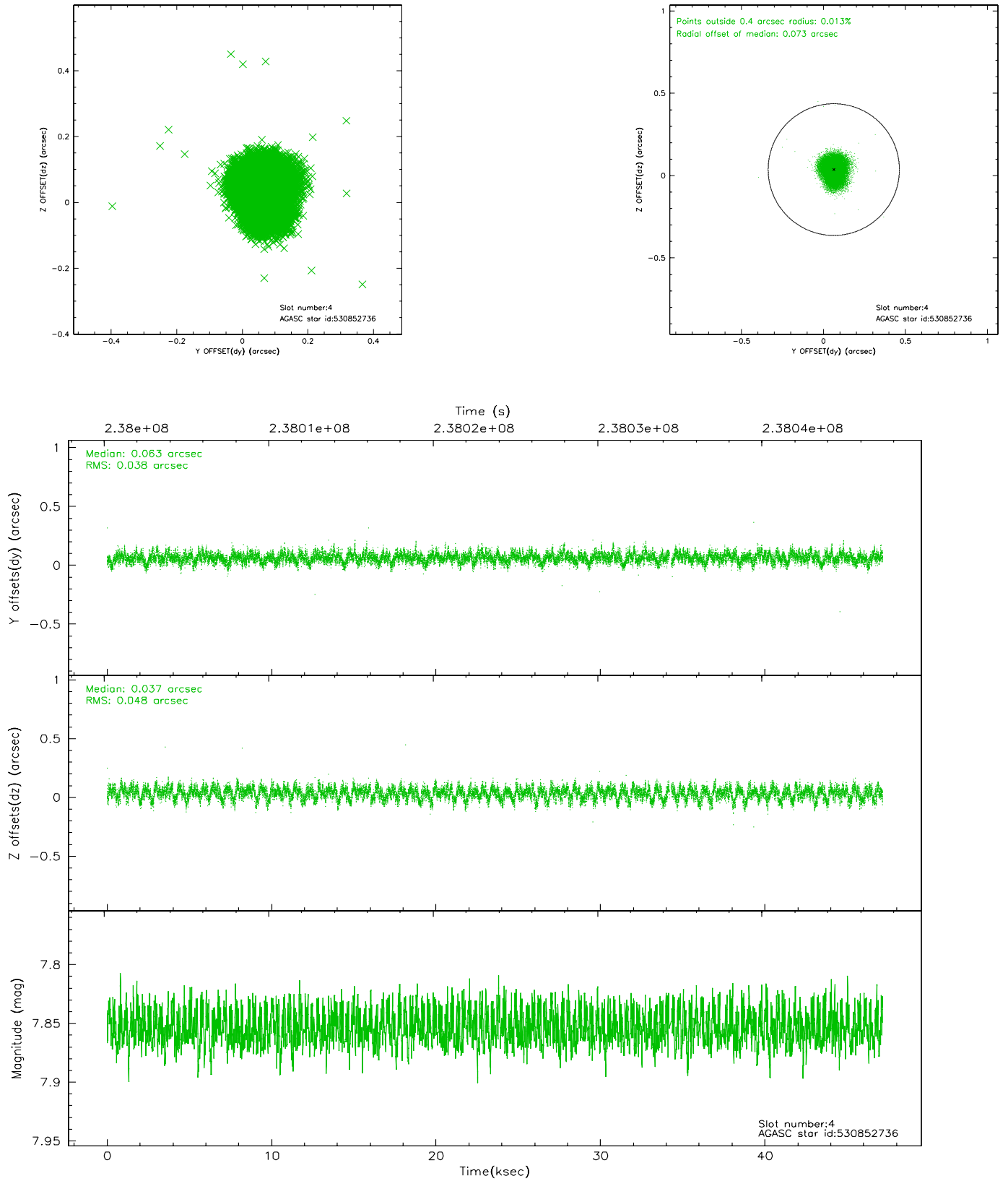
slot	status	id	mag	n_pts	med_dy	med_dz	dr1	dr2	ra	dec	mean_y	mean_z
0	FID	ACIS-I-1	7.24	11502	0.029	-0.002	0.010	0.059	0.000000	0.000000	932.68	-834.86
1	FID	ACIS-I-5	7.23	11503	-0.145	0.052	0.010	0.038	0.000000	0.000000	-1815.56	1062.73
2	FID	ACIS-I-6	7.25	11500	0.027	0.020	0.010	0.023	0.000000	0.000000	398.30	1707.15
3	GUIDE	530322640	8.87	23001	0.199	-0.112	0.208	0.284	35.878914	61.773652	-1644.75	1526.34
4	GUIDE	530852736	7.85	22943	0.063	0.037	0.066	0.106	37.086329	62.219010	-110.48	-567.63
5	GUIDE	530862896	8.90	23002	0.001	-0.155	0.091	0.144	35.753276	62.216485	-42.96	1668.83
6	GUIDE	530330080	8.81	22998	0.006	0.080	0.096	0.150	37.987862	61.612207	-2321.21	-2056.71
7	GUIDE	530850752	7.41	23006	-0.266	0.150	0.080	0.125	36.960051	62.890600	2310.95	-418.22

## 2.4 Star Slots

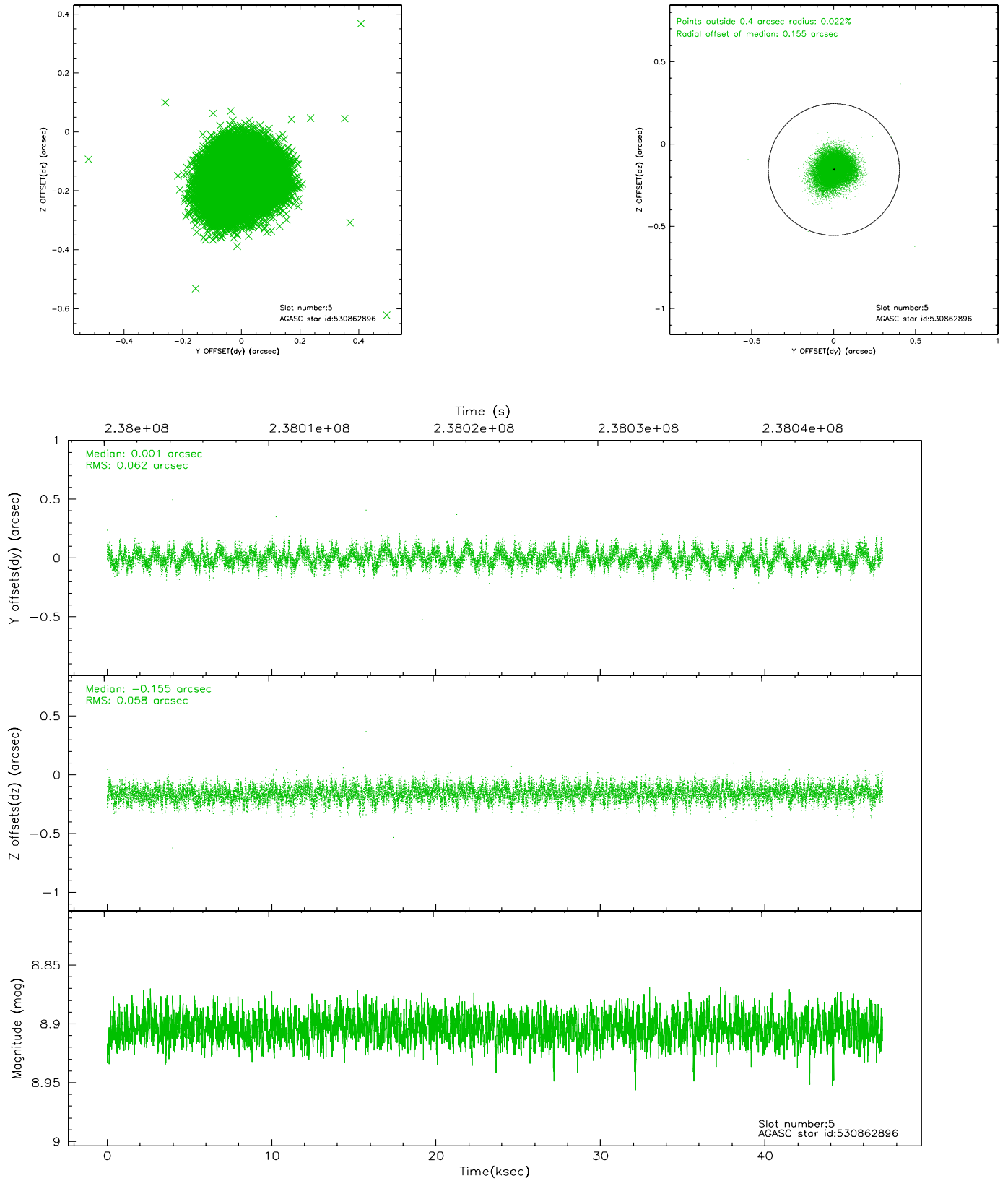
### 2.4.1 Slot 3



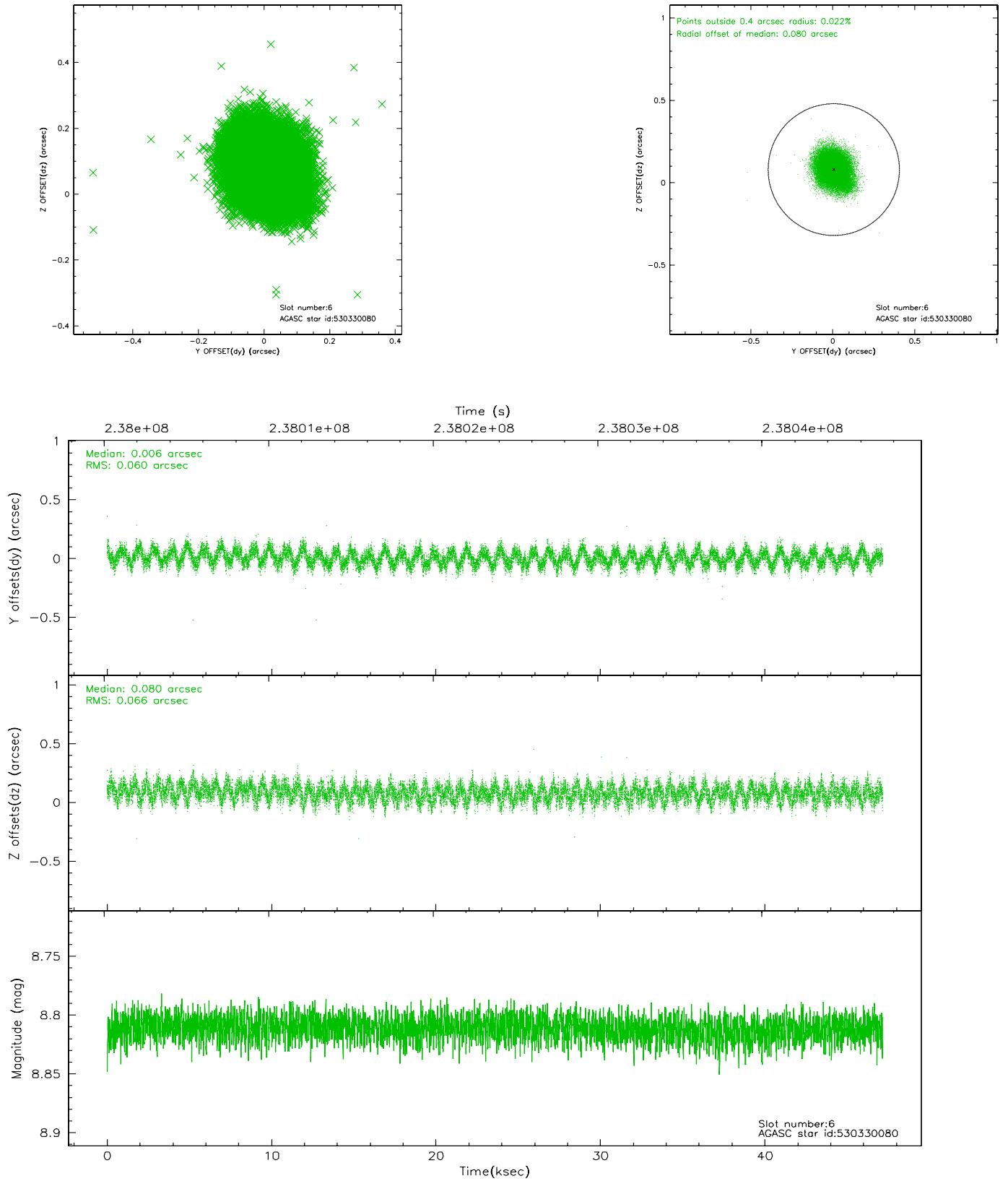
## 2.4.2 Slot 4



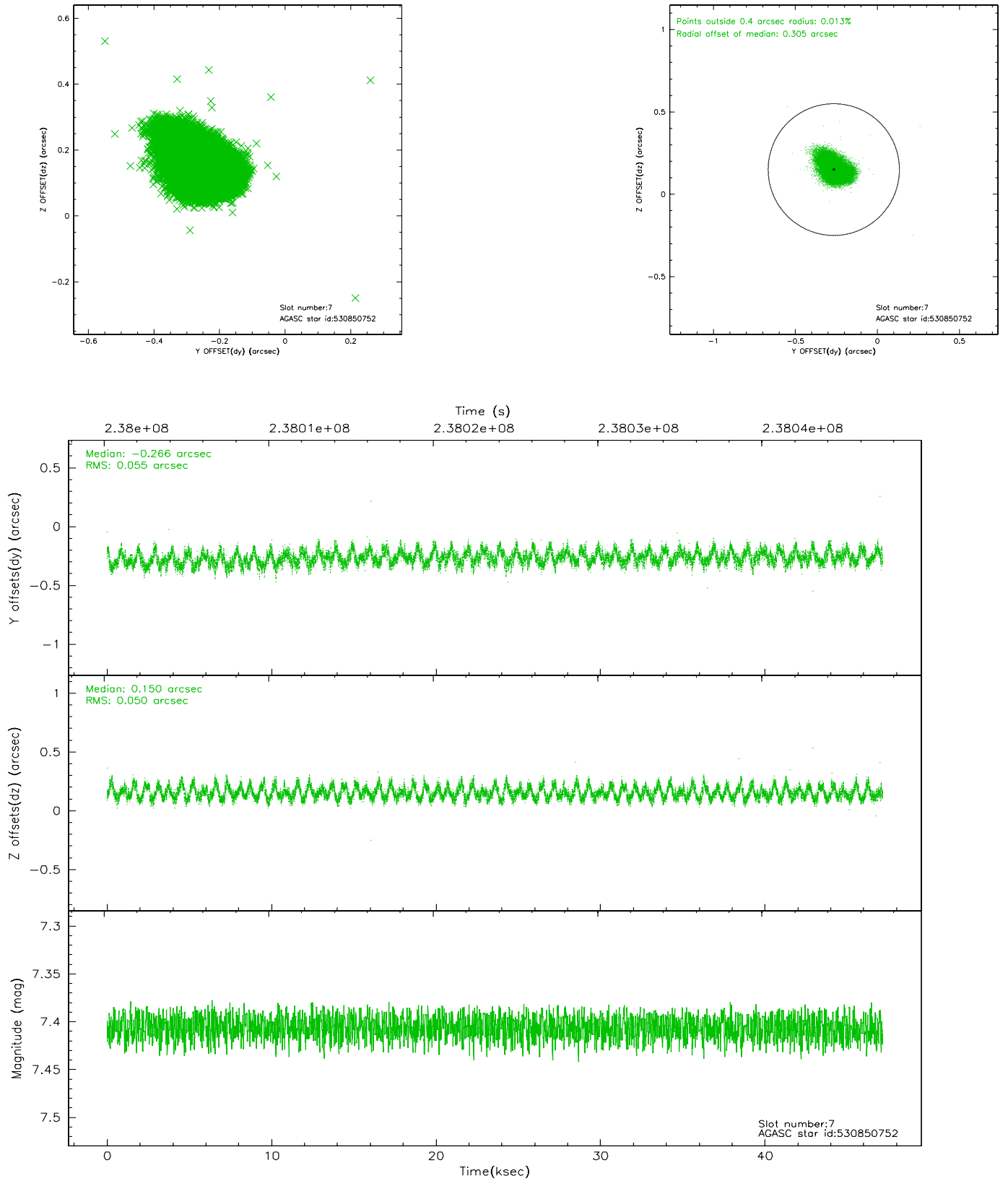
### 2.4.3 Slot 5



## 2.4.4 Slot 6

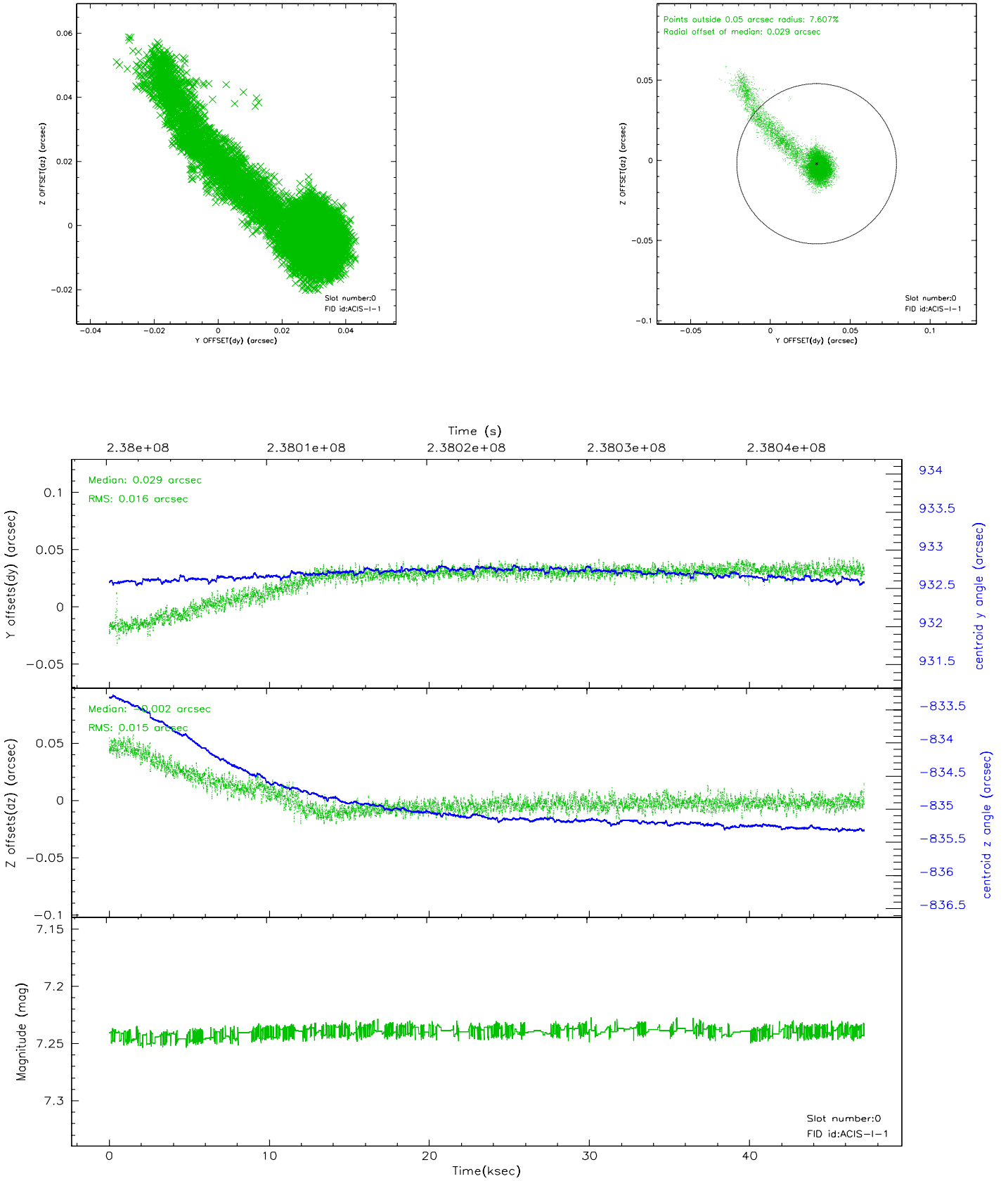


## 2.4.5 Slot 7

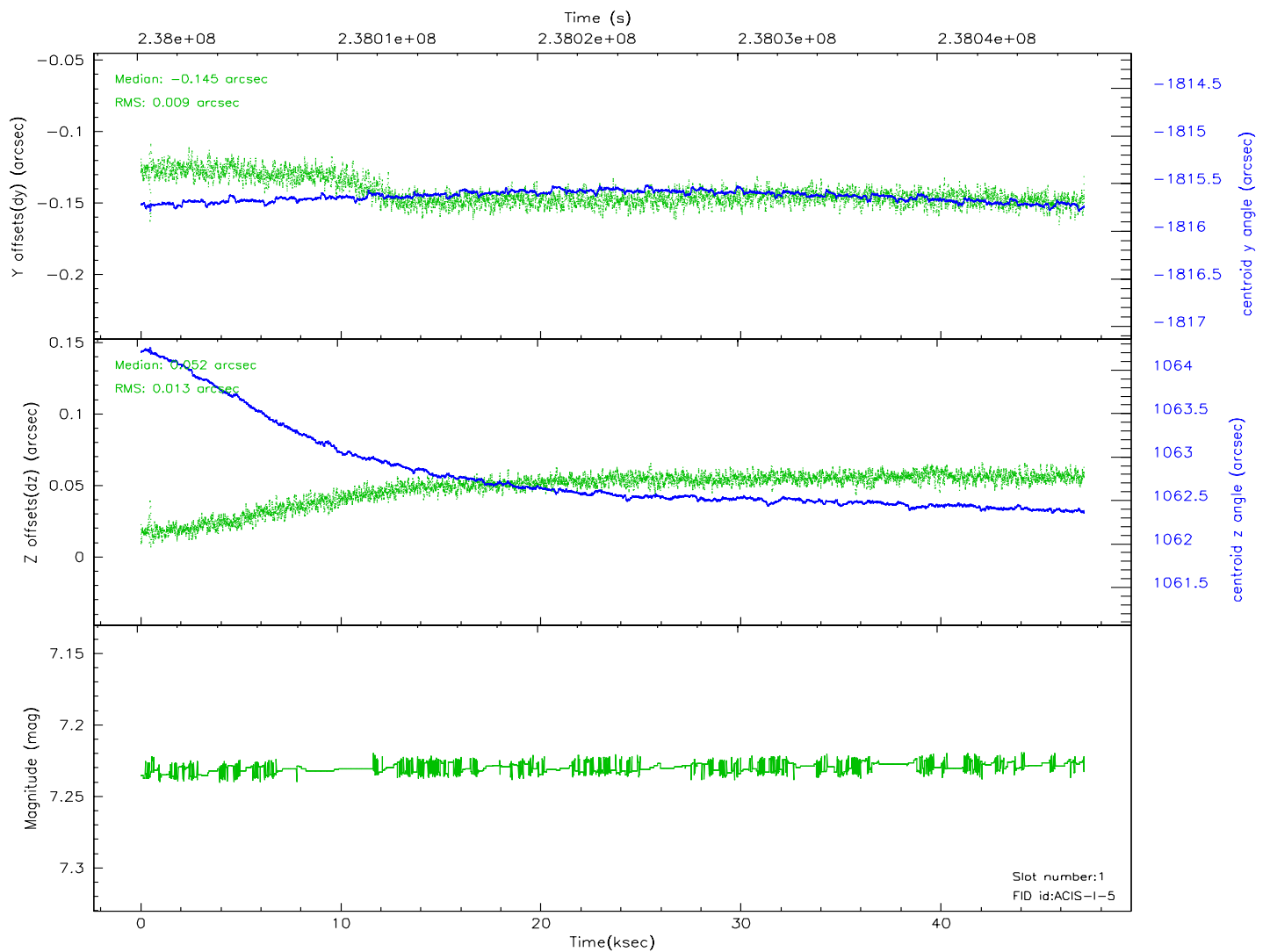
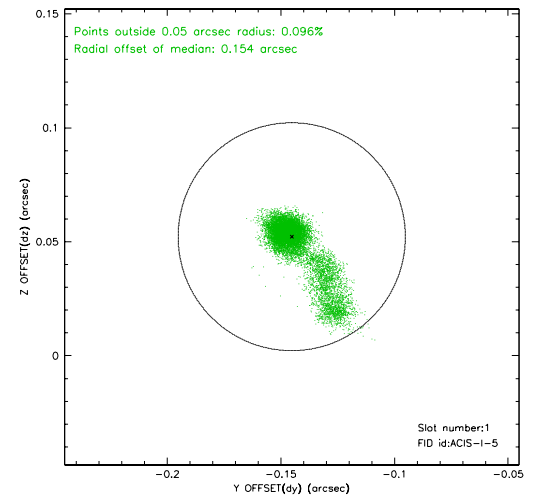
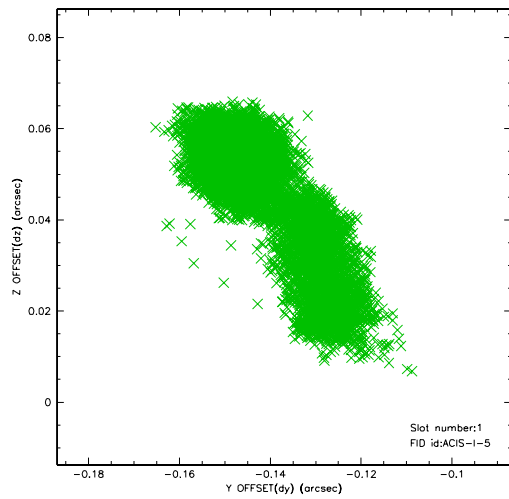


## 2.5 FID Slots

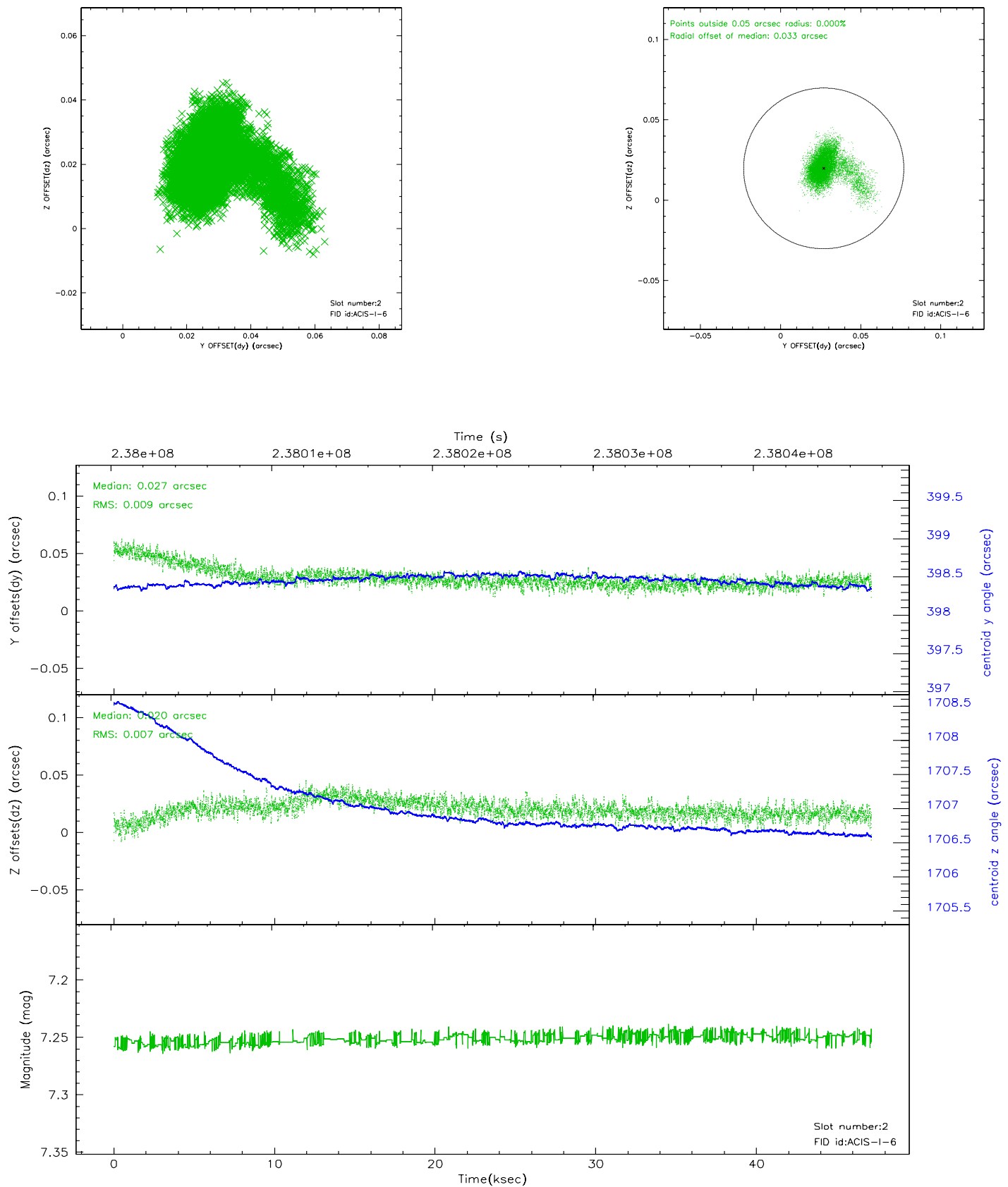
### 2.5.1 Slot 0



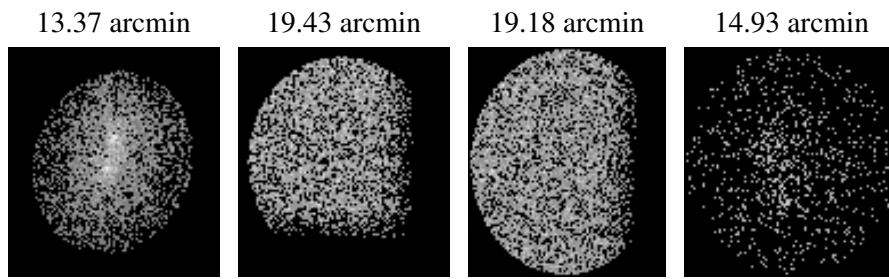
## 2.5.2 Slot 1



### 2.5.3 Slot 2



### 3 Point Sources



## A Summary

### A.1 Status

V&V Scientist	Jen Lauer
V&V Date (YYYY-MM-DD)	2006.03.15
V&V Edition	1
V&V Disposition and Status	OK
V&V Charge Time	47.15515

### A.2 Comments