

# V&V Reference Report

## L2 ASCDS Version : 7.6.7

Observation 5887 - L2 Version 003  
Chandra X-Ray Center

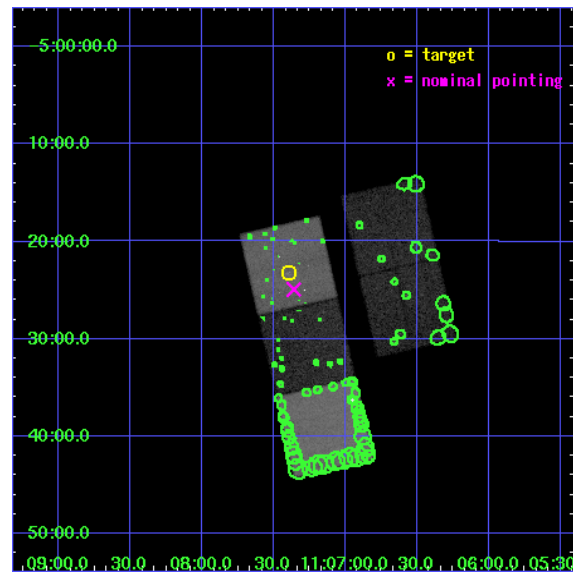
L2 Processing Date : Mar 20 2006

## Contents

<b>1</b>	<b>Front</b>	<b>2</b>
<b>2</b>	<b>OBI</b>	<b>3</b>
2.1	OBI . . . . .	3
2.1.1	Images . . . . .	3
2.1.2	Bias . . . . .	3
2.1.3	Parameters . . . . .	4
2.1.4	Events . . . . .	4
2.2	Compared Parameters . . . . .	5
2.3	Aspect . . . . .	6
2.4	Star Slots . . . . .	9
2.4.1	Slot 3 . . . . .	9
2.4.2	Slot 5 . . . . .	10
2.4.3	Slot 6 . . . . .	11
2.4.4	Slot 7 . . . . .	12
2.5	FID Slots . . . . .	13
2.5.1	Slot 0 . . . . .	13
2.5.2	Slot 1 . . . . .	14
2.5.3	Slot 2 . . . . .	15
<b>3</b>	<b>Point Sources</b>	<b>16</b>
<b>A</b>	<b>Summary</b>	<b>17</b>
A.1	Status . . . . .	17
A.2	Comments . . . . .	17

# 1 Front

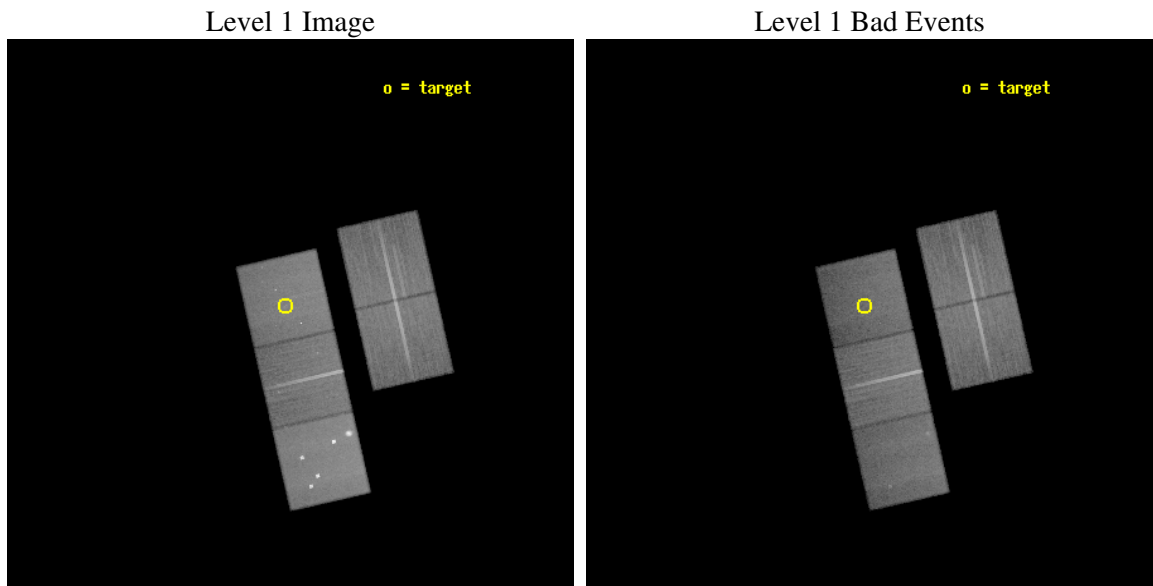
seq_num	900387
obs_id	5887
title	X-ray Emission from Optically-Selected, High-Redshift Galaxy Clusters from the RCS Survey
observer	Prof. Gordon Garmire
object	RCS1107.3-0523
dtcycle	0
cycle	P
ra_targ	166.848167
dec_targ	-5.387639
ra_nom	166.83997629732
dec_nom	-5.4155338957996
roll_nom	257.15585355943
revision	3
ontime	45182.499913126
livetime	44592.157288889
ontime2	45179.358922869
ontime3	45176.217922658
ontime5	45182.499913126
ontime6	45182.499913126
ontime7	45182.499913126
l2events	388695



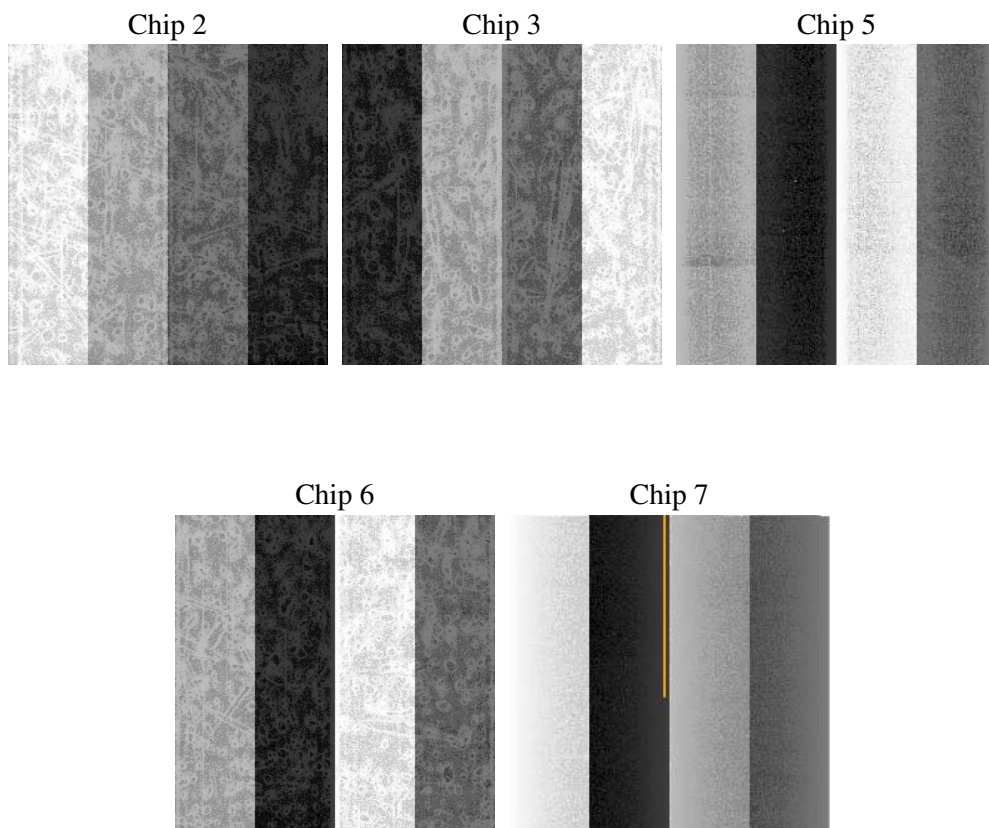
## 2 OBI

### 2.1 OBI

#### 2.1.1 Images



#### 2.1.2 Bias



### 2.1.3 Parameters

obi_num	0
ascdsver	7.6.7.1
caldbver	3.2.1
date	2006-03-20T20:42:45
revision	3

sched_exp_time	45000.000000
ontime	45459.843905687
ontime2	45456.70291543
ontime3	45453.561915219
ontime5	45459.843905687
ontime6	45459.843905687
ontime7	45459.843905687
l1events	1620997

### 2.1.4 Events

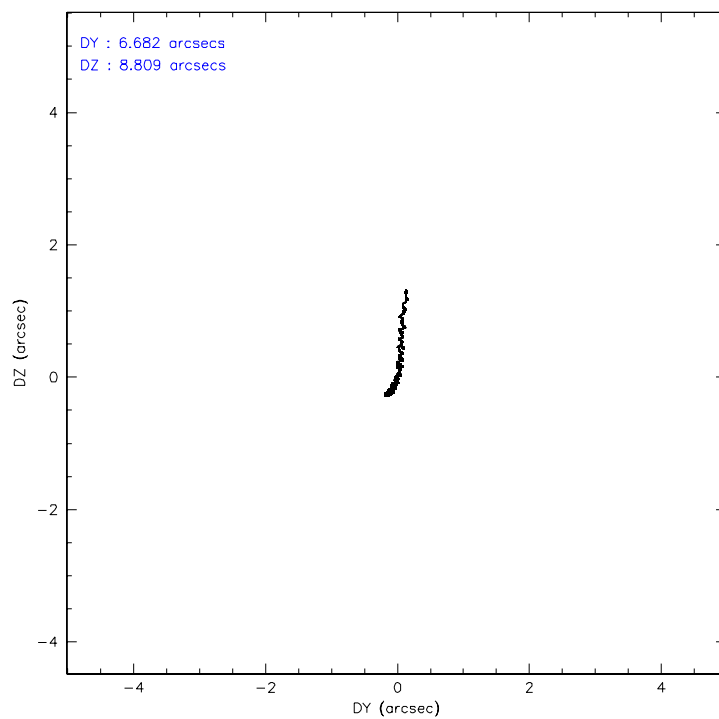
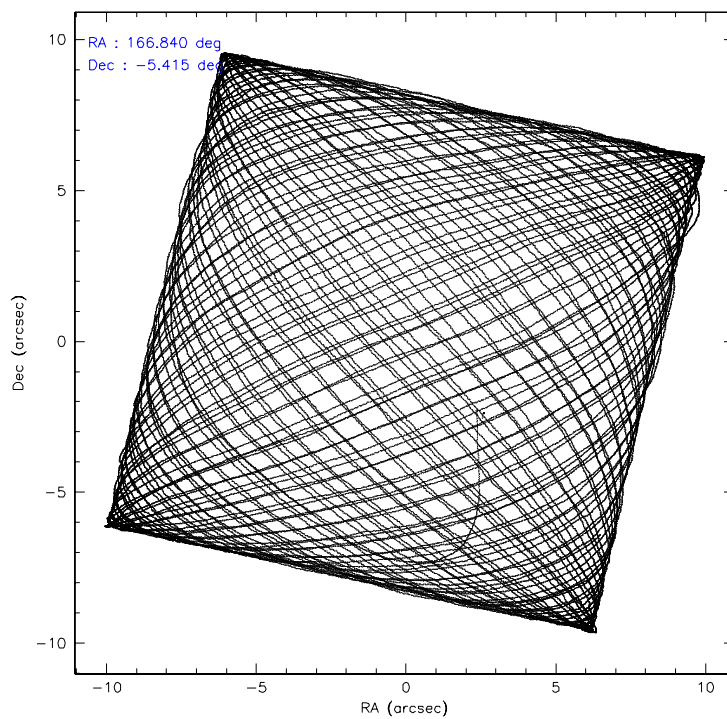
	ccd 2	ccd 3	ccd 5	ccd 6	ccd 7
level 1 events	290716	285765	428198	291964	324354
rejected events	263272	259999	206988	261671	188266
rejected %	90%	90%	48%	89%	58%

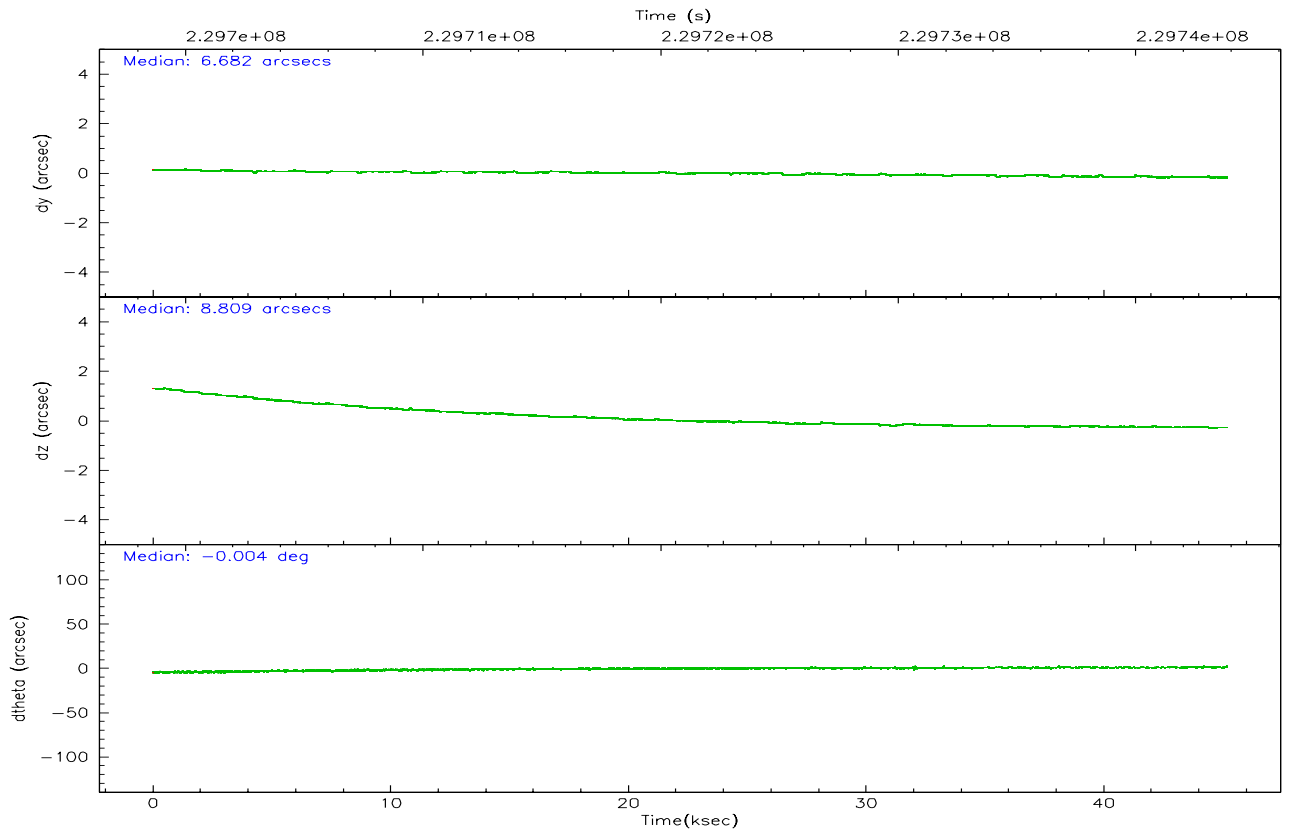
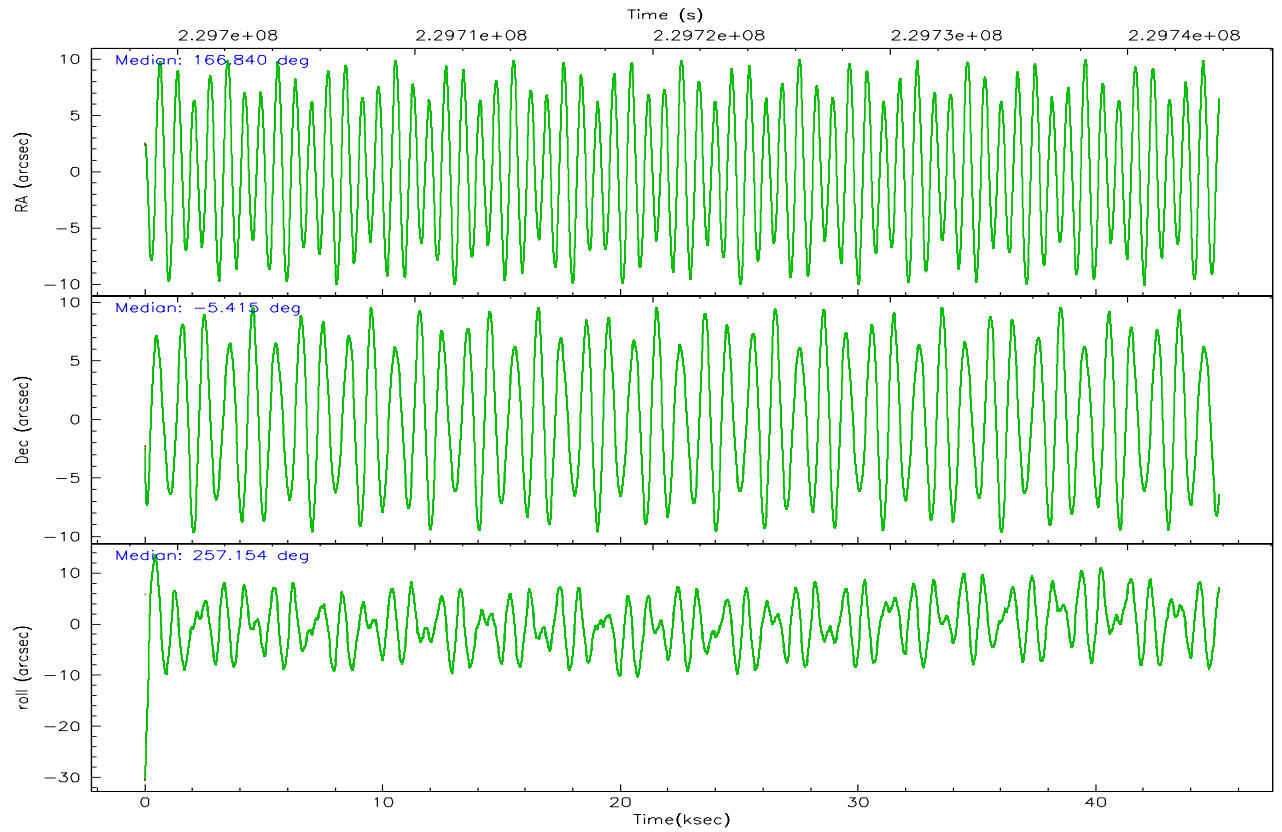
	ccd 2	ccd 3	ccd 5	ccd 6	ccd 7
grade 0 events	9733	8874	40598	10742	8666
	3%	3%	9%	3%	2%
grade 1 events	131	125	469	140	171
	0%	0%	0%	0%	0%
grade 2 events	6538	5649	63835	6445	34116
	2%	1%	14%	2%	10%
grade 3 events	3060	3094	5279	3348	7725
	1%	1%	1%	1%	2%
grade 4 events	3155	3107	5117	3439	7771
	1%	1%	1%	1%	2%
grade 5 events	9391	11286	21018	11712	23961
	3%	3%	4%	4%	7%
grade 6 events	5090	5203	107717	6502	78597
	1%	1%	25%	2%	24%
grade 7 events	253618	248427	184165	249636	163347
	87%	86%	43%	85%	50%

## 2.2 Compared Parameters

Parameter	Planned	Actual	Parameter	Planned	Actual
Instrument	ACIS	ACIS	Obspar format version number	6	6
Detector	ACIS-23567	ACIS-23567	Obspar file type	PREDICTED	ACTUAL
Grating	NONE	NONE	Obspar update status	NONE	UPDATED
Data mode	VFAINT	VFAINT	On-chip summing requested	N	N
Observation mode	POINTING	POINTING	Subarray requested	NONE	NONE
Pointing RA	166.831554	166.8399762973164	Alternating exposures requested	N	N
Pointing Dec	-5.389638	-5.415533895799635	Primary exposure time	0.000000	3.1
Pointing Roll	256.998436	257.1558535594304			
SIM focus pos (mm)	-0.684267	-0.6828225247311905			
SIM defocus (mm)	0	0.001444936568705701			
SIM translation stage pos (mm)	-190.132523	-190.1400660498719			
SIM translation stage offset (mm)	0	0.00754346686406393			
Observation start time	229698835.184000	229697698.62157			
Observation start date	2005-04-12T13:12:51	2005-04-12T12:54:58			
Observation end time	229743835.184000	229745340.11123			
Observation end date	2005-04-13T01:42:51	2005-04-13T02:09:00			
Read mode	TIMED	TIMED			

## 2.3 Aspect



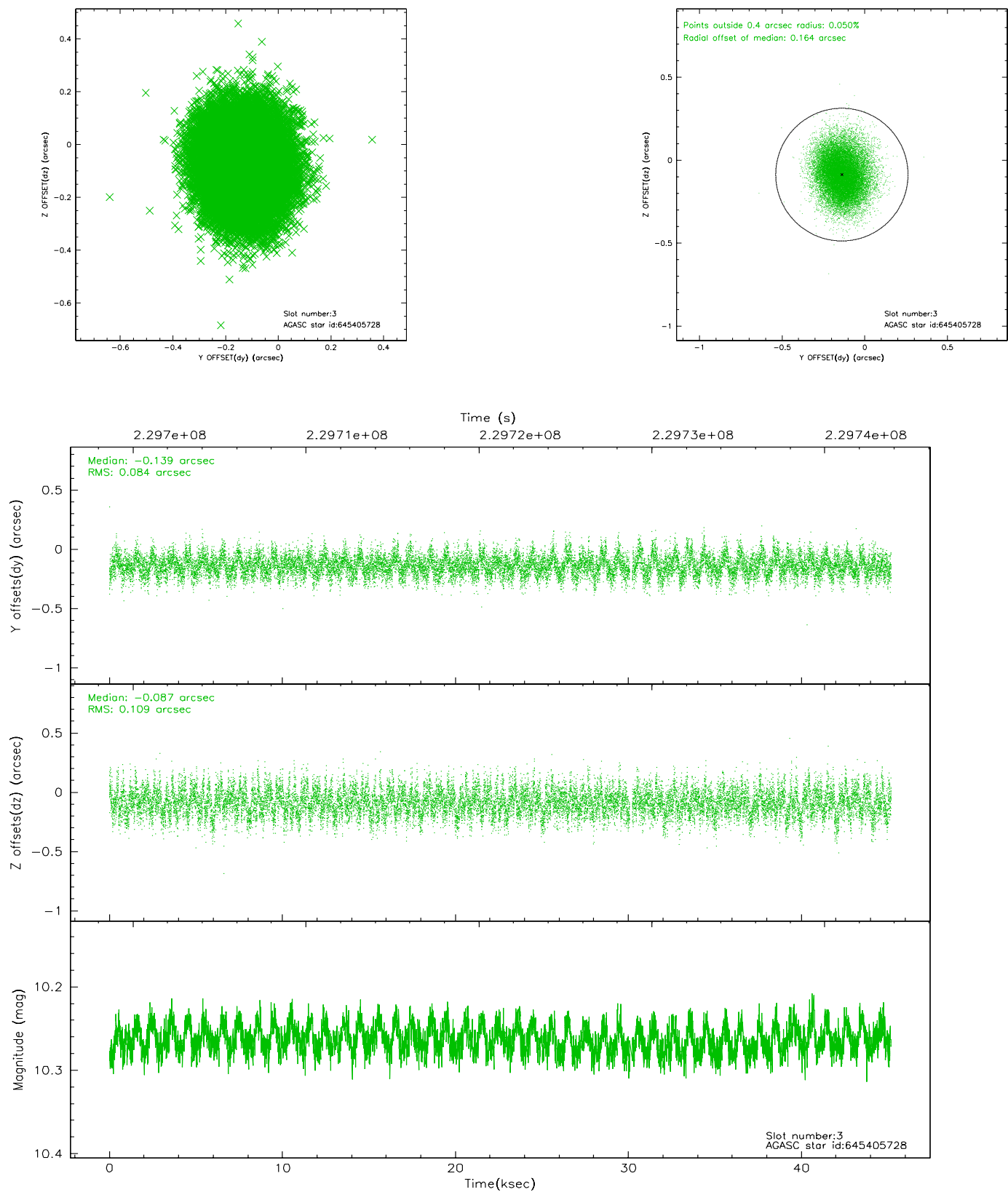


### Slot Statistics

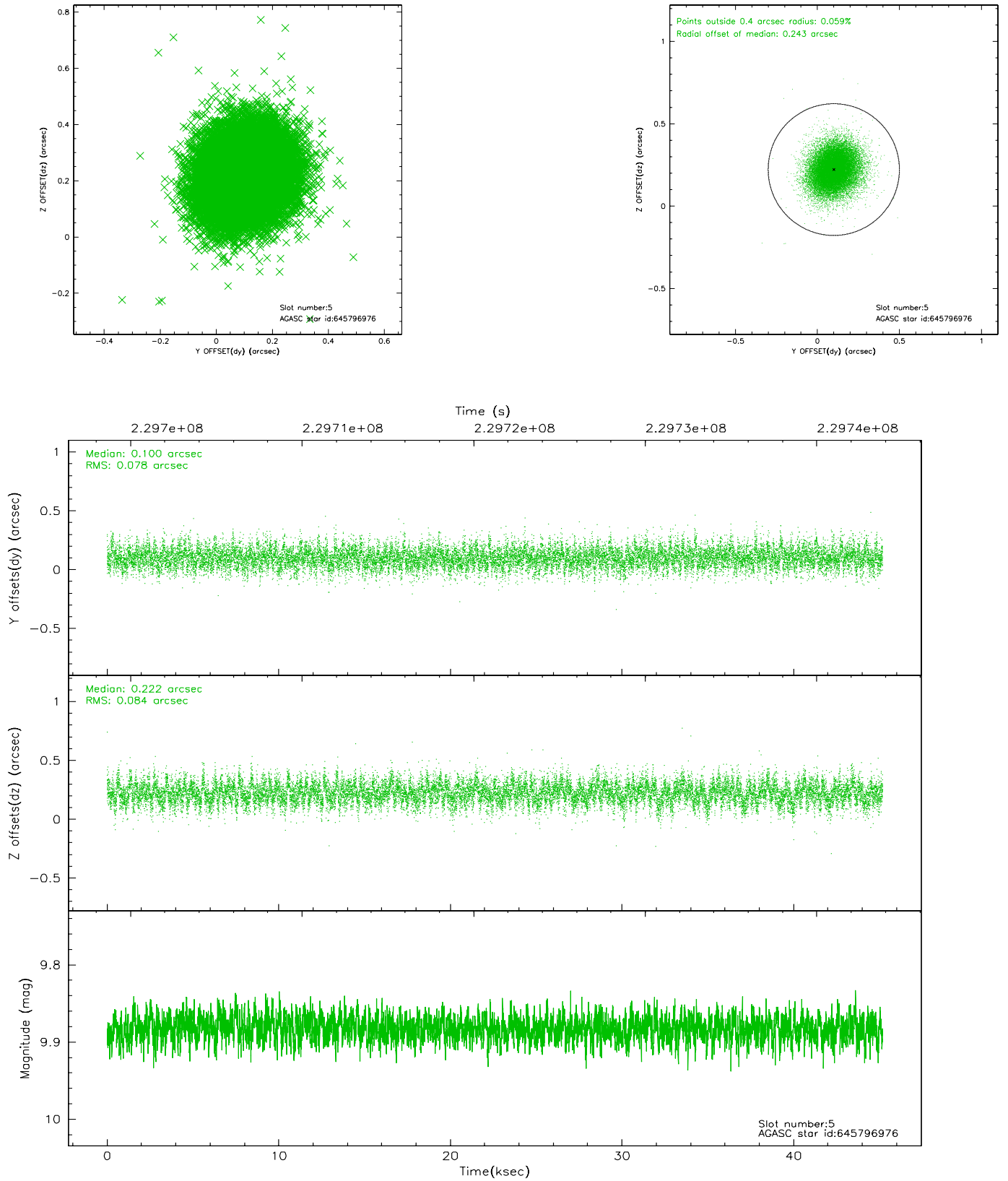
slot	status	id	mag	n_pts	med_dy	med_dz	dr1	dr2	ra	dec	mean_y	mean_z
0	FID	ACIS-S-2	7.10	11023	-0.029	-0.024	0.010	0.026	0.000000	0.000000	-759.43	-1730.22
1	FID	ACIS-S-4	7.21	11023	0.043	0.020	0.005	0.009	0.000000	0.000000	2153.91	178.32
2	FID	ACIS-S-5	7.23	11020	-0.045	0.013	0.010	0.027	0.000000	0.000000	-1812.30	171.96
3	GUIDE	645405728	10.26	21931	-0.139	-0.087	0.146	0.238	166.379932	-4.876775	-1433.29	-1993.17
4	OMITTED		0.00	0	0.000	0.000	0.000	0.000	0.000000	0.000000	0.00	0.00
5	GUIDE	645796976	9.88	22022	0.100	0.222	0.121	0.200	167.205232	-6.141738	2338.70	1913.43
6	GUIDE	645798808	9.62	22024	-0.070	-0.079	0.112	0.177	166.261457	-5.333958	266.05	-2035.57
7	GUIDE	645801536	10.44	22011	0.110	-0.074	0.167	0.315	166.481888	-5.828422	1821.97	-864.49

## 2.4 Star Slots

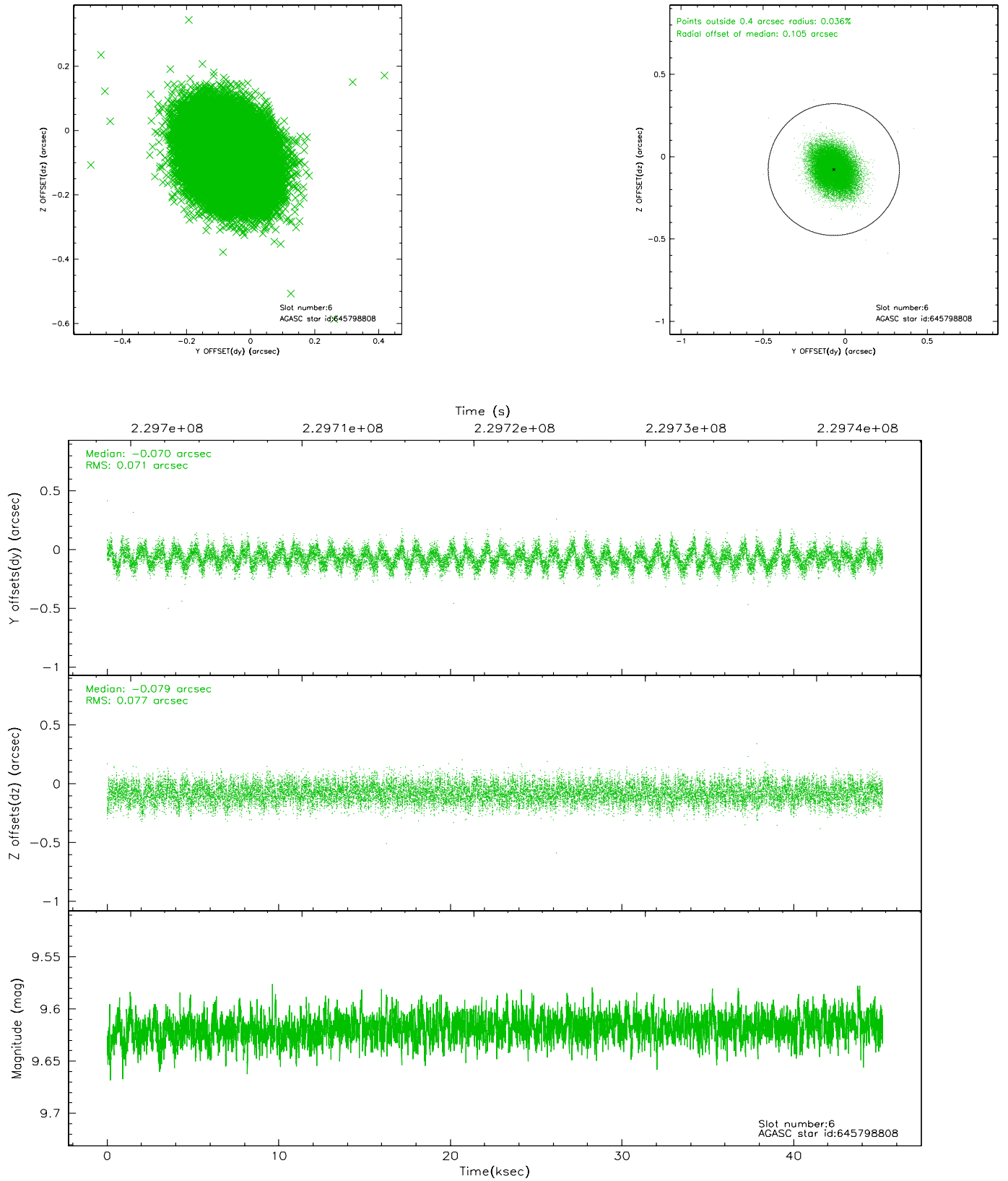
### 2.4.1 Slot 3



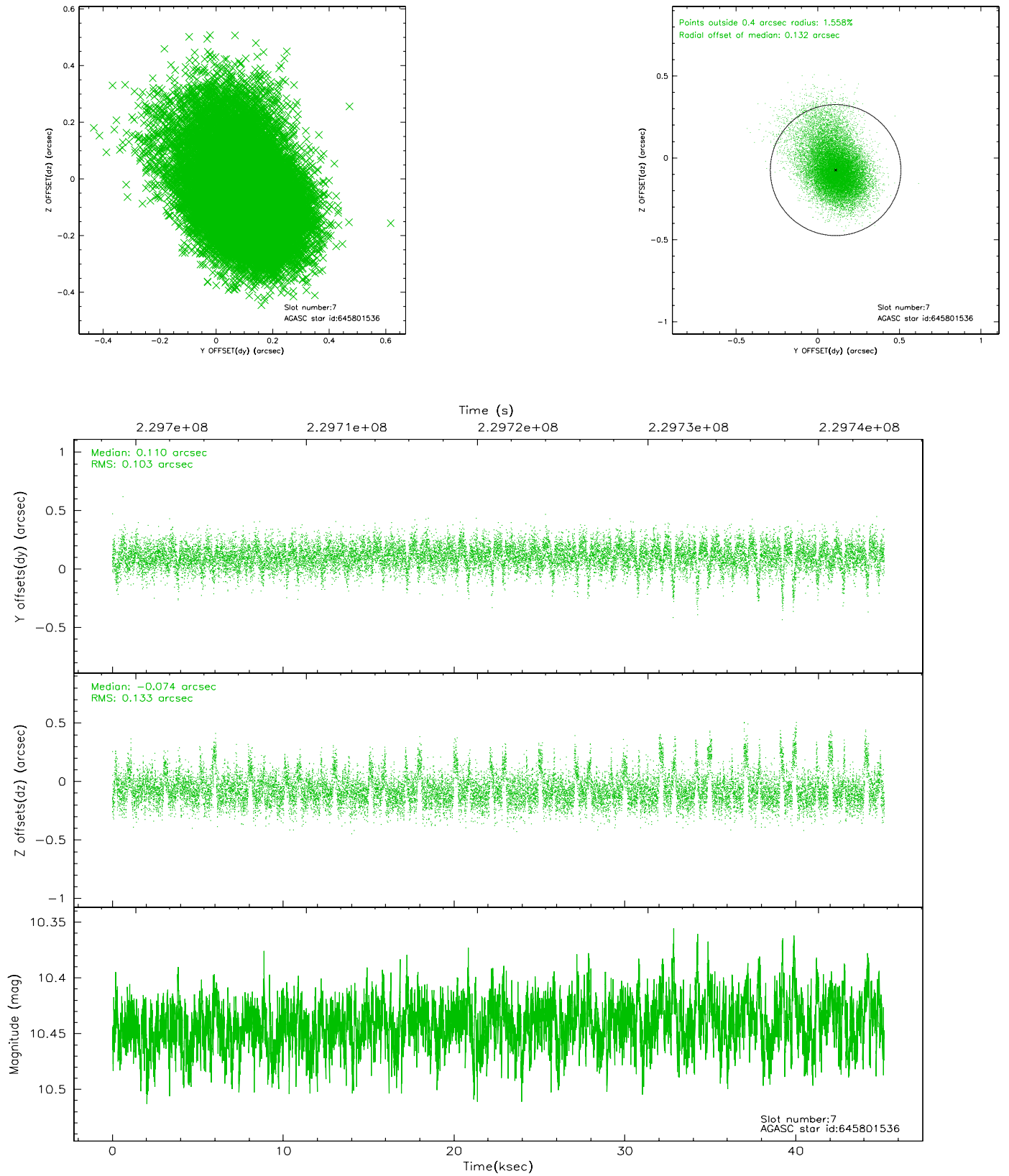
## 2.4.2 Slot 5



### 2.4.3 Slot 6

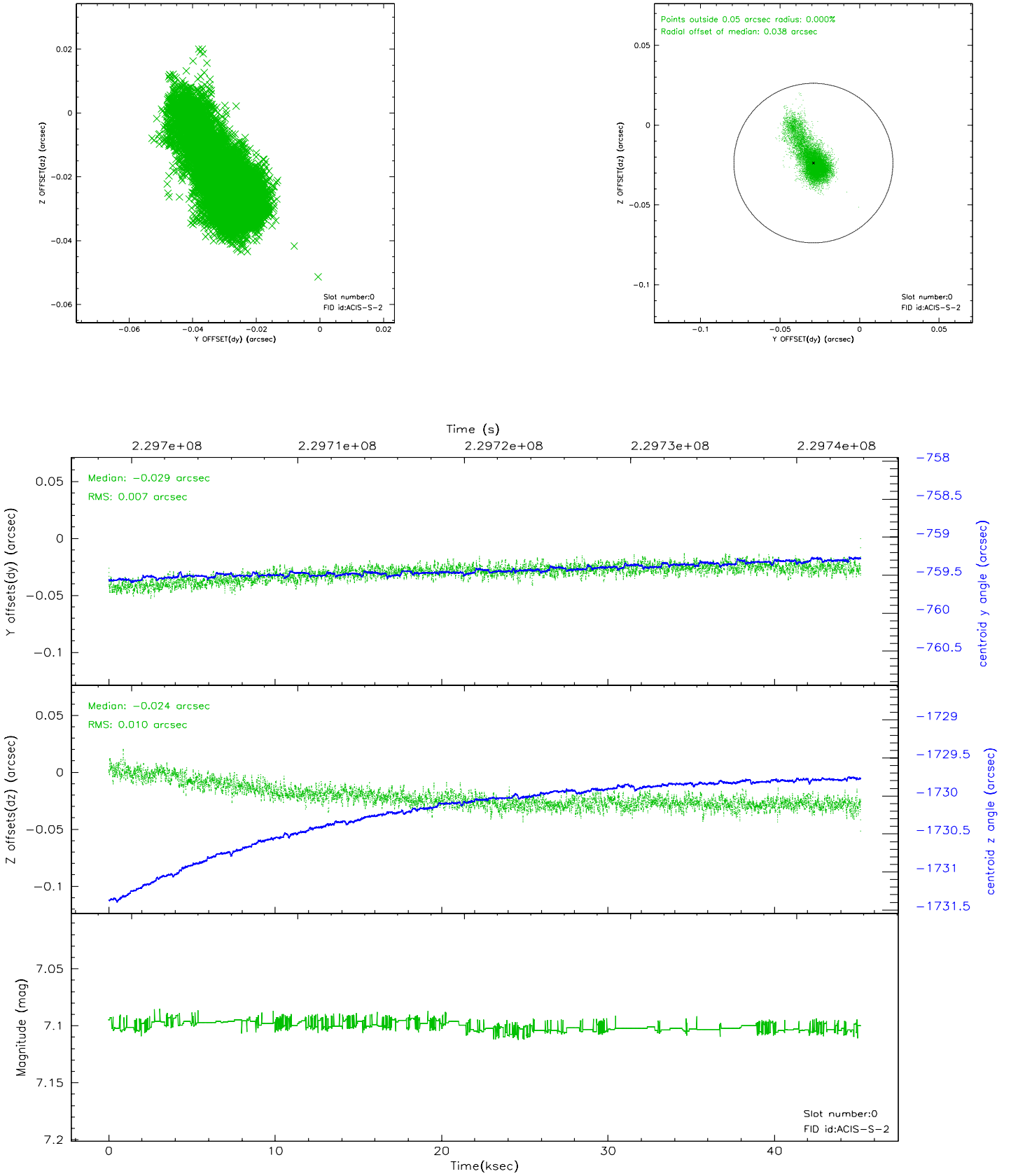


## 2.4.4 Slot 7

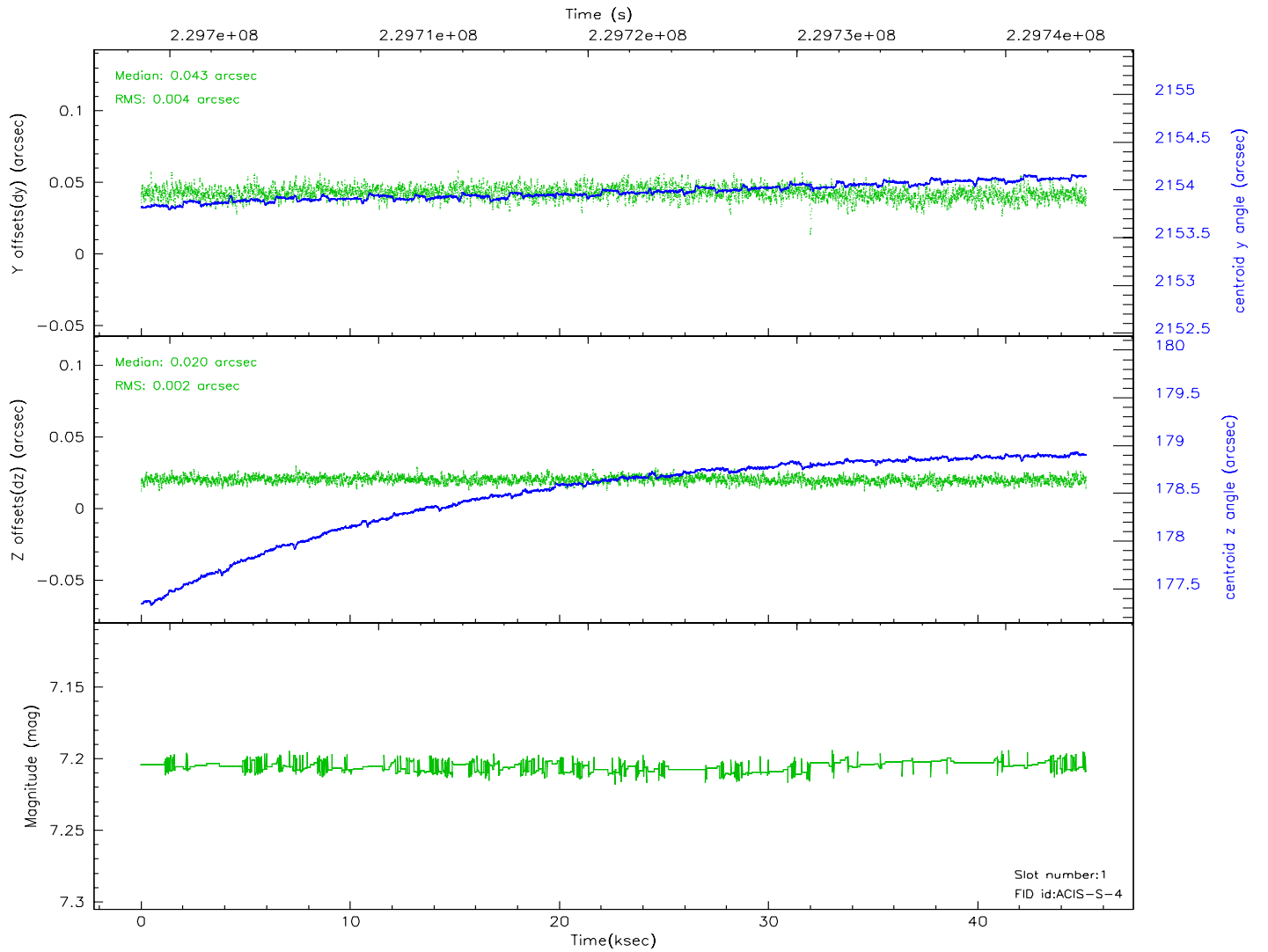
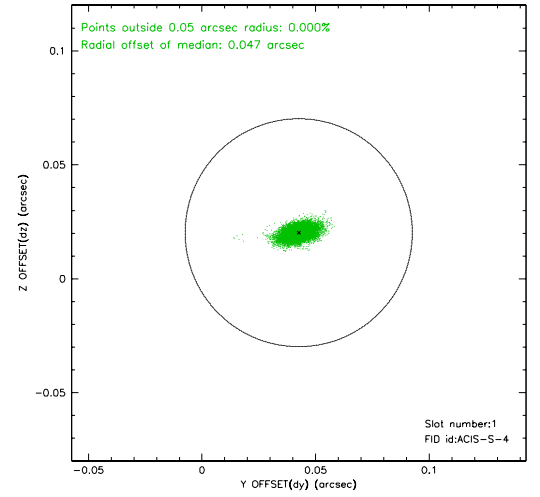
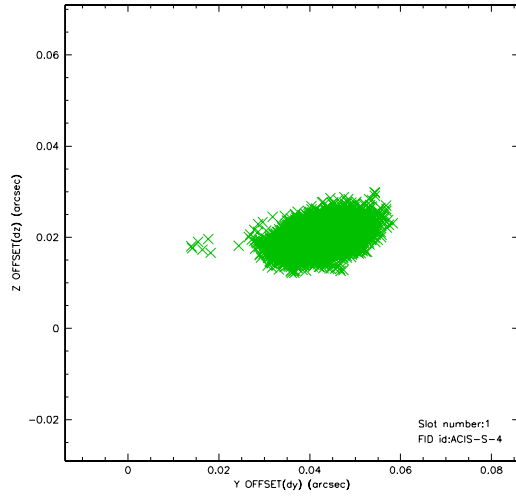


## 2.5 FID Slots

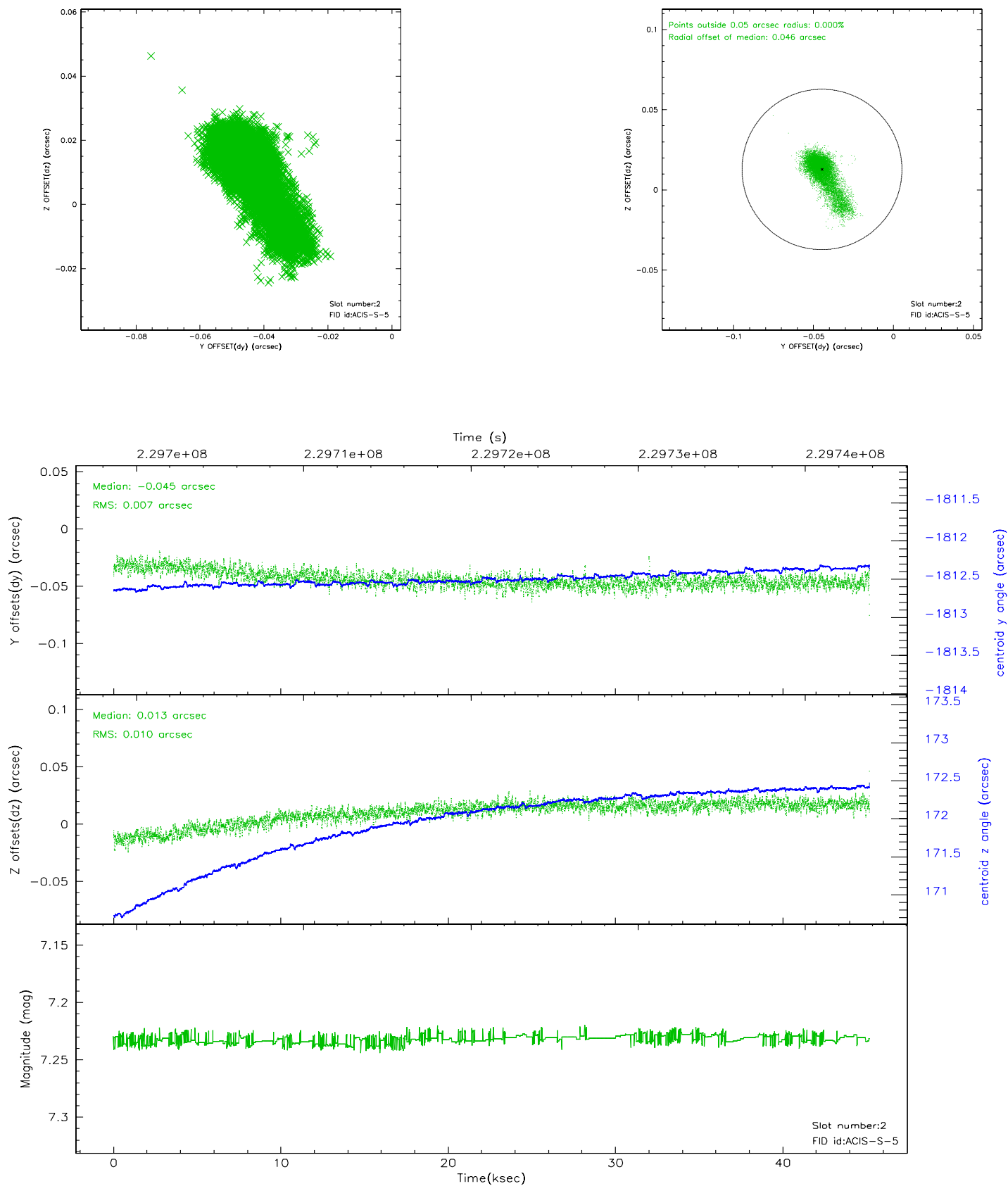
### 2.5.1 Slot 0



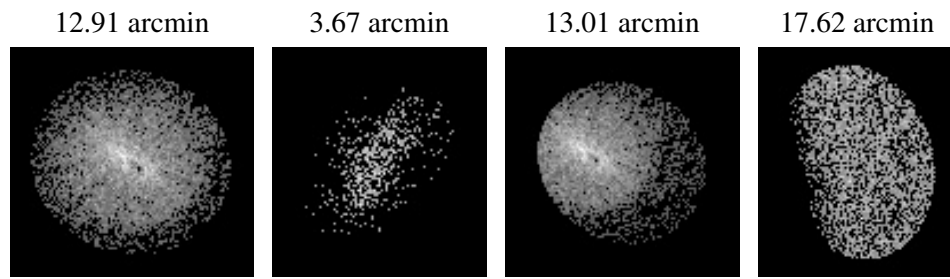
## 2.5.2 Slot 1



### 2.5.3 Slot 2



### 3 Point Sources



## A Summary

### A.1 Status

V&V Scientist	Jen Lauer
V&V Date (YYYY-MM-DD)	2006.03.23
V&V Edition	1
V&V Disposition and Status	OK
V&V Charge Time	45.18249

### A.2 Comments