

# V&V Reference Report

## L2 ASCDS Version : 7.6.7.1

Observation 5885 - L2 Version 002  
Chandra X-Ray Center

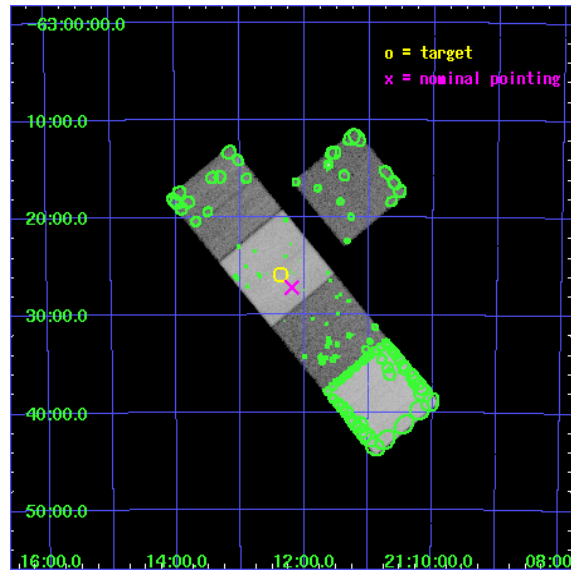
L2 Processing Date : Apr 7 2006

## Contents

<b>1</b>	<b>Front</b>	<b>2</b>
<b>2</b>	<b>OBI</b>	<b>3</b>
2.1	OBI . . . . .	3
2.1.1	Images . . . . .	3
2.1.2	Bias . . . . .	3
2.1.3	Parameters . . . . .	4
2.1.4	Events . . . . .	4
2.2	Compared Parameters . . . . .	5
2.3	Aspect . . . . .	6
2.4	Star Slots . . . . .	9
2.4.1	Slot 3 . . . . .	9
2.4.2	Slot 4 . . . . .	10
2.4.3	Slot 5 . . . . .	11
2.4.4	Slot 6 . . . . .	12
2.4.5	Slot 7 . . . . .	13
2.5	FID Slots . . . . .	14
2.5.1	Slot 0 . . . . .	14
2.5.2	Slot 1 . . . . .	15
2.5.3	Slot 2 . . . . .	16
<b>3</b>	<b>Point Sources</b>	<b>17</b>
<b>A</b>	<b>Summary</b>	<b>18</b>
A.1	Status . . . . .	18
A.2	Comments . . . . .	18

# 1 Front

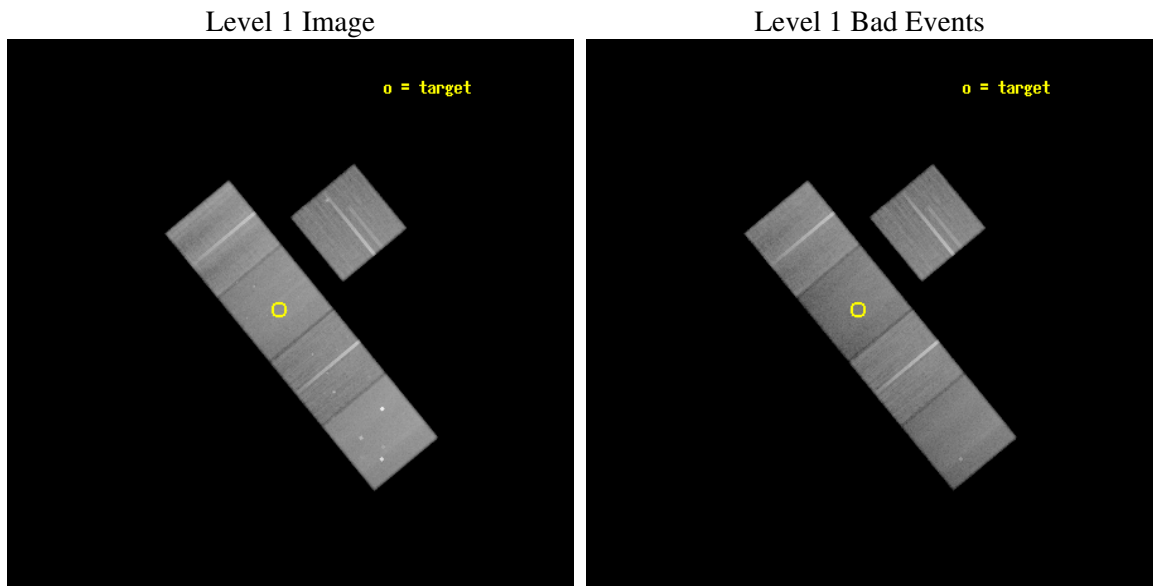
seq_num	900385
obs_id	5885
title	X-ray Emission from Optically-Selected, High-Redshift Galaxy Clusters from the RCS Survey
observer	Professor Gordon Garmire
object	RCS2112.3-6326
dtcycle	0
cycle	P
ra_targ	318.093333
dec_targ	-63.432028
ra_nom	318.04908092782
dec_nom	-63.453297229575
roll_nom	230.49547530201
revision	2
ontime	71653.39986223
livetime	70717.195442564
ontime3	71647.117941737
ontime5	71653.39986223
ontime6	71643.976941615
ontime7	71653.39986223
ontime8	71643.976951569
l2events	612228



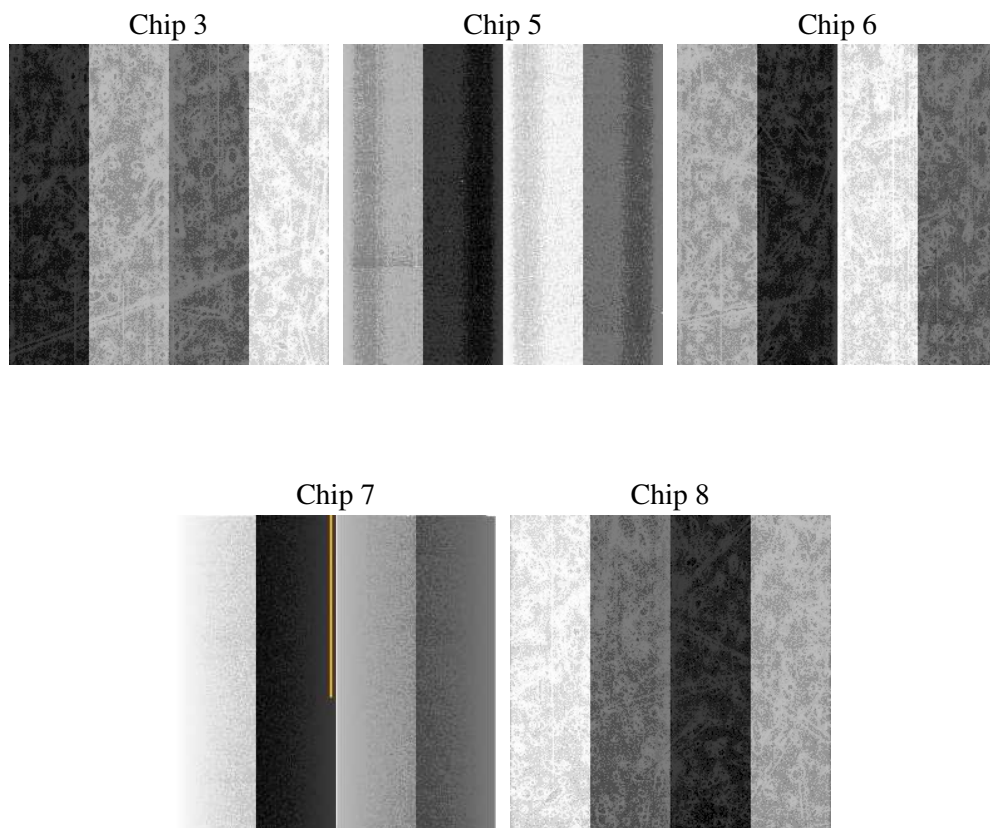
## 2 OBI

### 2.1 OBI

#### 2.1.1 Images



#### 2.1.2 Bias



### 2.1.3 Parameters

obi_num	0
ascdsver	7.6.7.1
caldbver	3.2.1
date	2006-04-07T18:16:57
revision	2

sched_exp_time	71500.000000
ontime	72076.553378344
ontime3	72070.271457851
ontime5	72076.553378344
ontime6	72067.130427837
ontime7	72076.553378344
ontime8	72063.989467531
l1events	2618175

### 2.1.4 Events

	ccd 3	ccd 5	ccd 6	ccd 7	ccd 8
level 1 events	449704	620386	467652	504979	575454
rejected events	406955	318597	418140	292895	442822
rejected %	90%	51%	89%	58%	76%

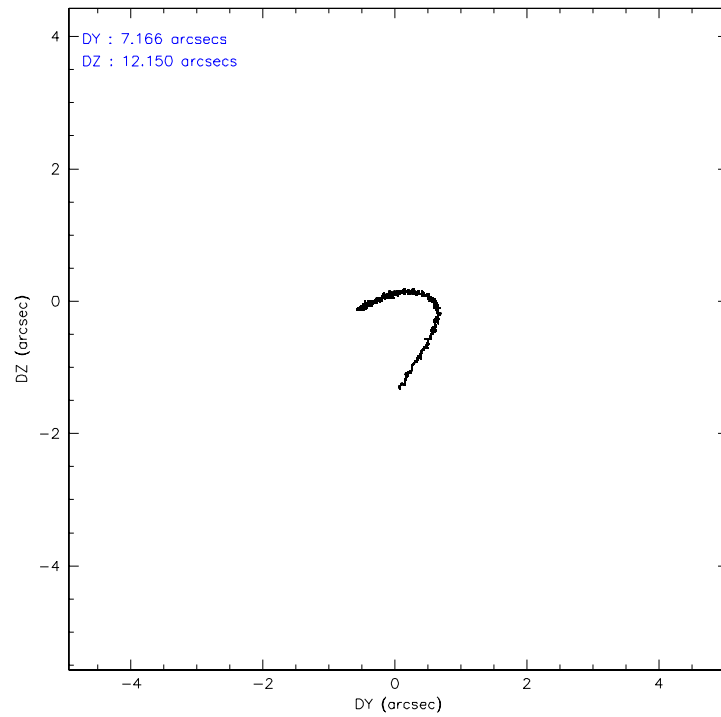
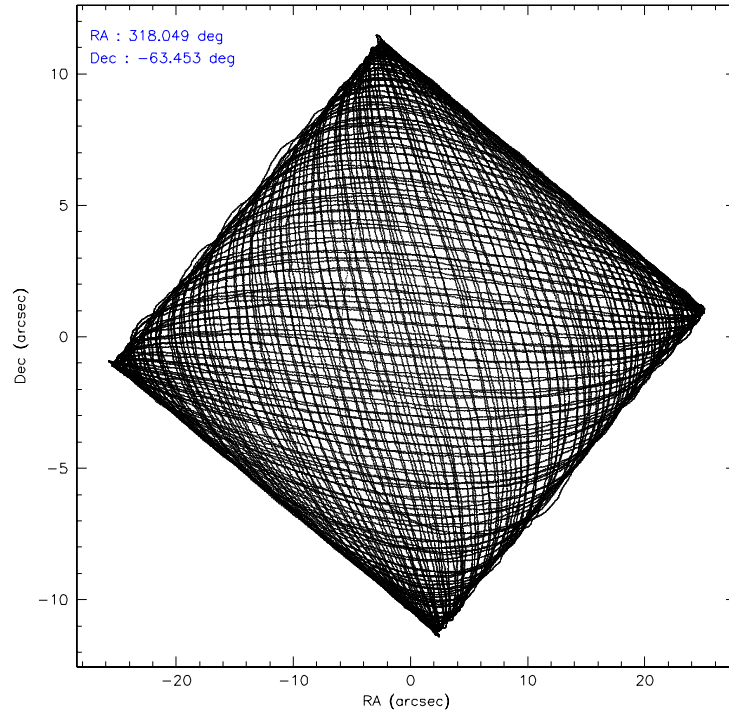
	ccd 3	ccd 5	ccd 6	ccd 7	ccd 8
grade 0 events	15858	33360	18900	14218	40331
	3%	5%	4%	2%	7%
grade 1 events	233	1038	232	285	409
	0%	0%	0%	0%	0%
grade 2 events	9056	90375	10252	52525	29405
	2%	14%	2%	10%	5%
grade 3 events	4845	7941	5343	12243	14400
	1%	1%	1%	2%	2%
grade 4 events	4794	7646	5283	12425	13452
	1%	1%	1%	2%	2%
grade 5 events	17426	33187	18196	38161	25456
	3%	5%	3%	7%	4%
grade 6 events	8449	164367	10049	121904	35944
	1%	26%	2%	24%	6%
grade 7 events	389043	282472	399397	253218	416057
	86%	45%	85%	50%	72%

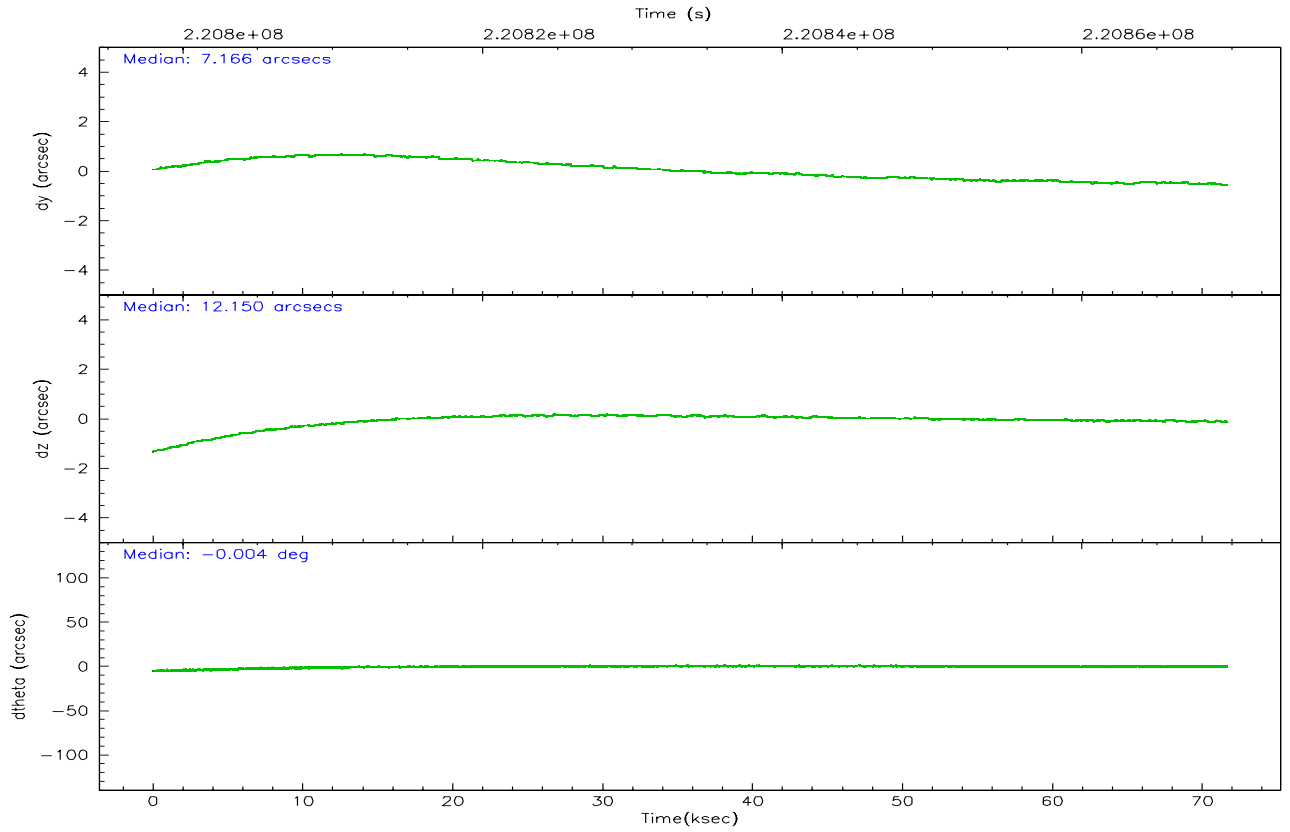
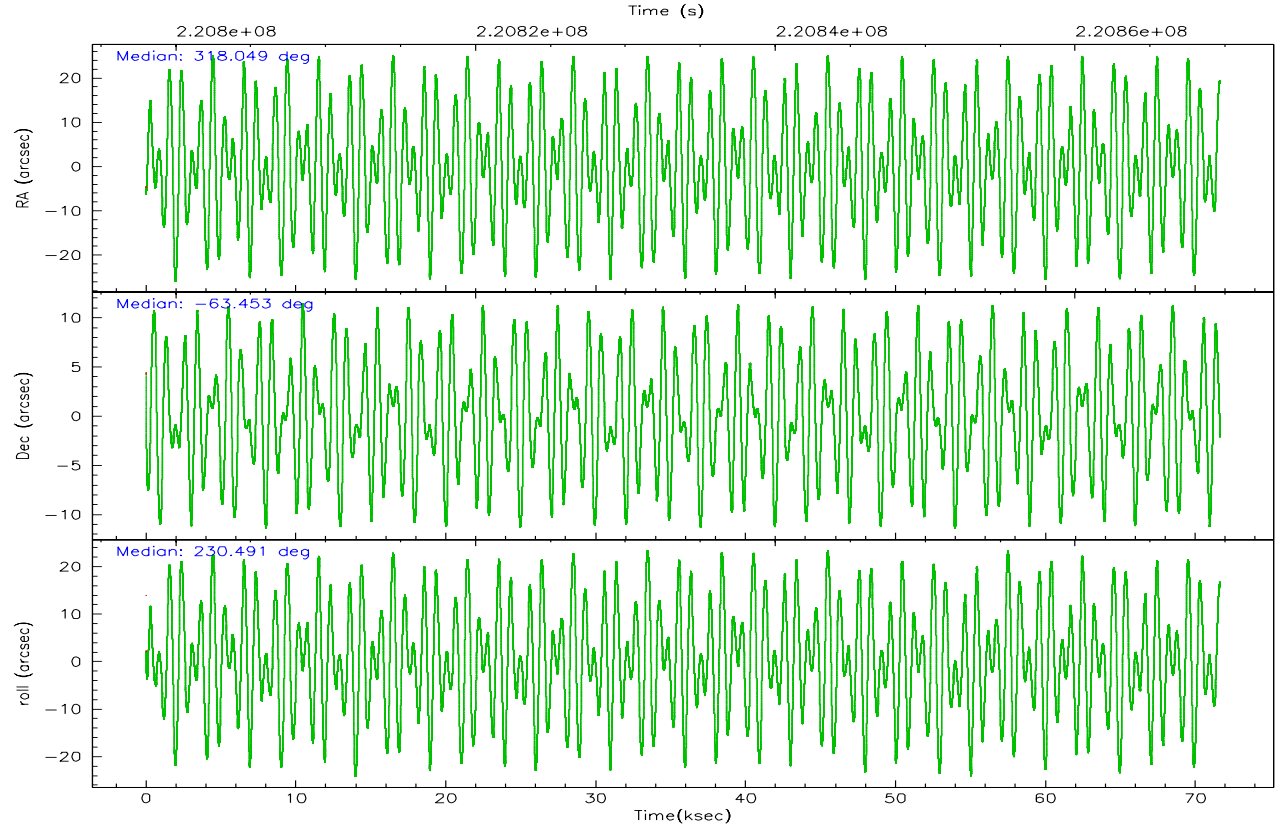


## 2.2 Compared Parameters

Parameter	Planned	Actual	Parameter	Planned	Actual
Instrument	ACIS	ACIS	Obspar format version number	6	6
Detector	ACIS-35678	ACIS-35678	Obspar file type	PREDICTED	ACTUAL
Grating	NONE	NONE	Obspar update status	NONE	UPDATED
Data mode	VFAINT	VFAINT	On-chip summing requested	N	N
Observation mode	POINTING	POINTING	Subarray requested	NONE	NONE
Pointing RA	318.058283	318.0490809278243	Alternating exposures requested	N	N
Pointing Dec	-63.426395	-63.45329722957521	Primary exposure time	0.000000	3.1
Pointing Roll	230.347072	230.4954753020135			
SIM focus pos (mm)	-0.684267	-0.6828225247311905			
SIM defocus (mm)	0	0.001444936568705701			
SIM translation stage pos (mm)	-190.132523	-190.1400660498719			
SIM translation stage offset (mm)	0	0.00754346686406393			
Observation start time	220798183.184000	220796987.20624			
Observation start date	2004-12-30T12:48:39	2004-12-30T12:29:47			
Observation end time	220869683.184000	220870395.65955			
Observation end date	2004-12-31T08:40:19	2004-12-31T08:53:15			
Read mode	TIMED	TIMED			

## 2.3 Aspect



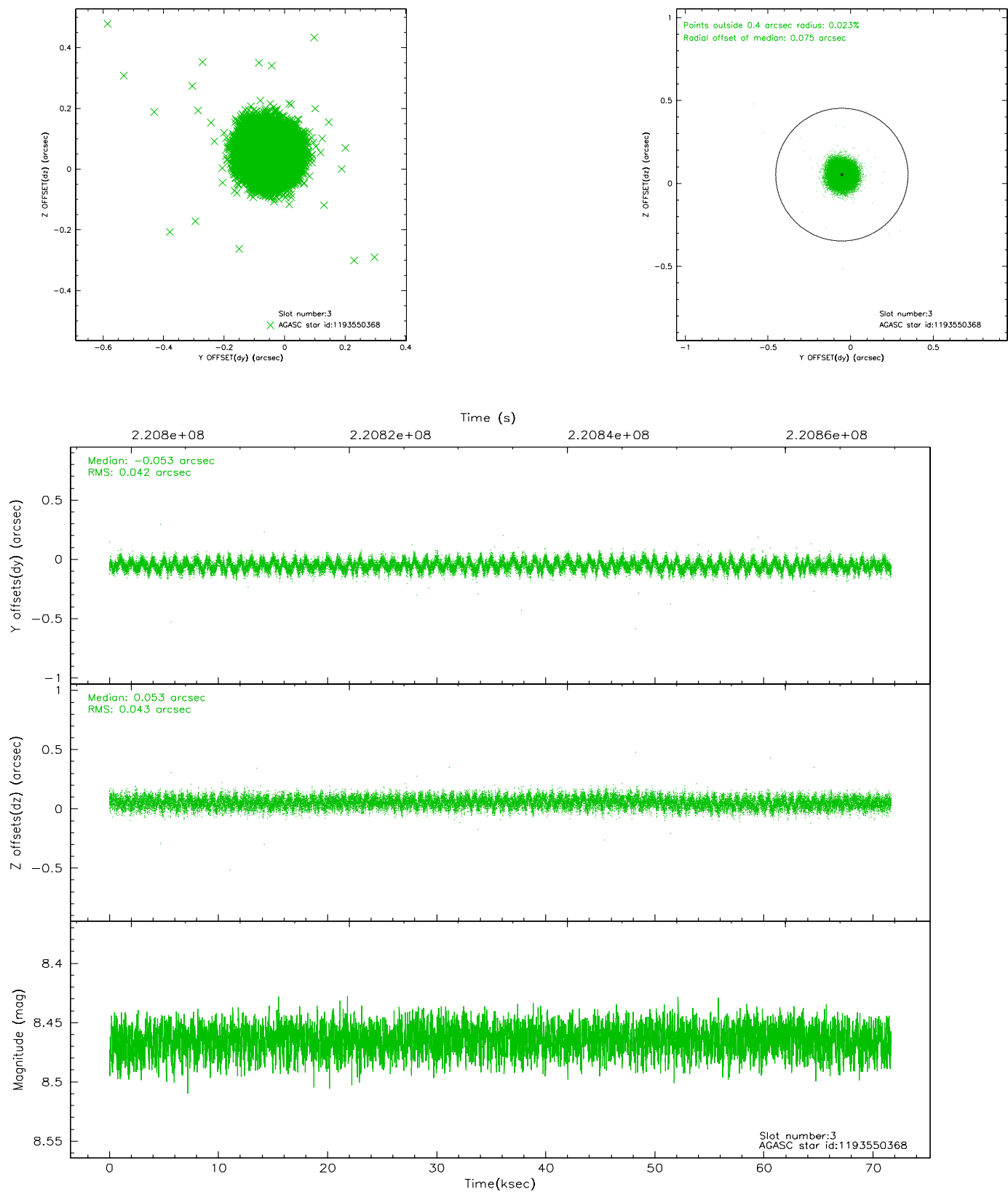


### Slot Statistics

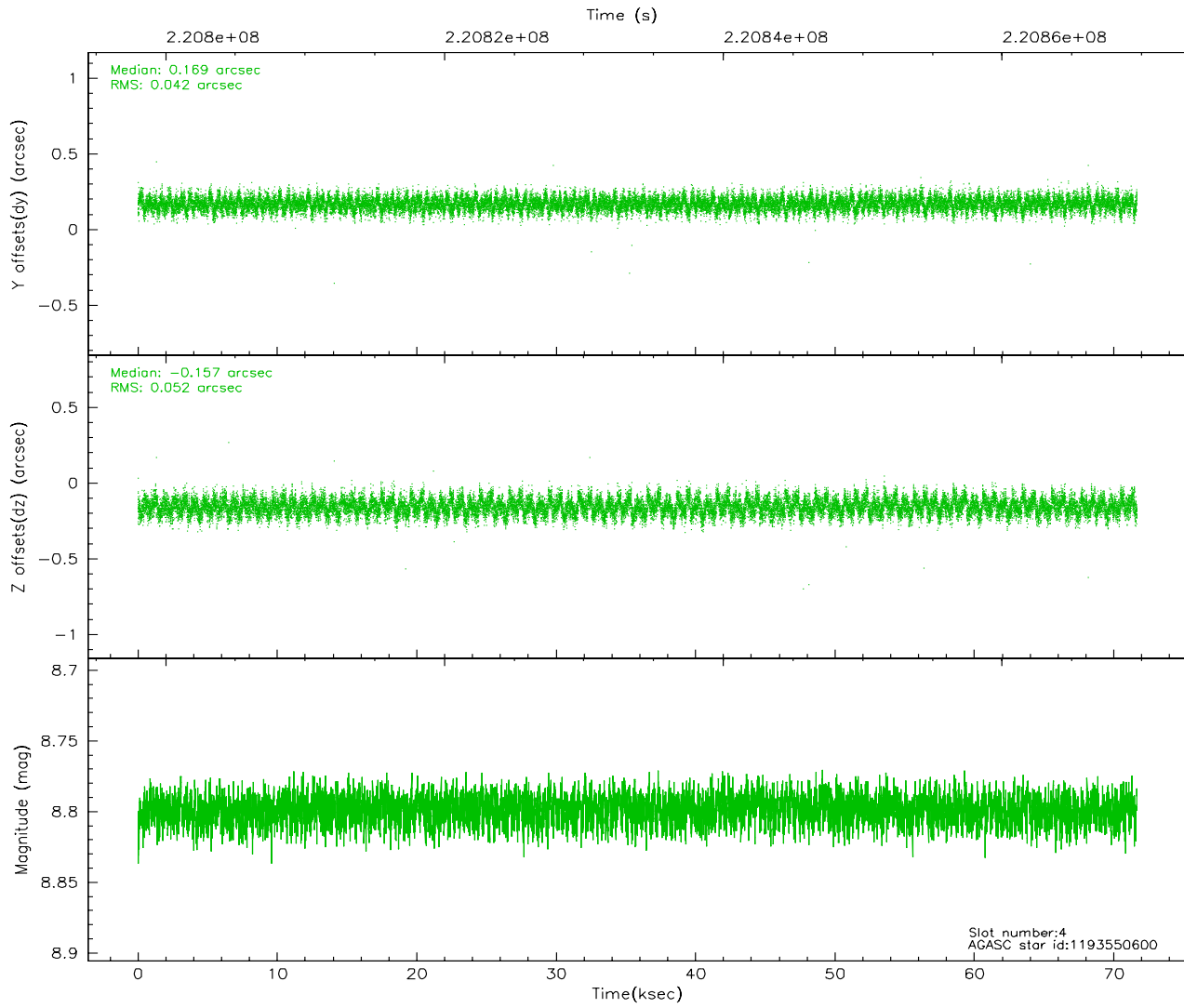
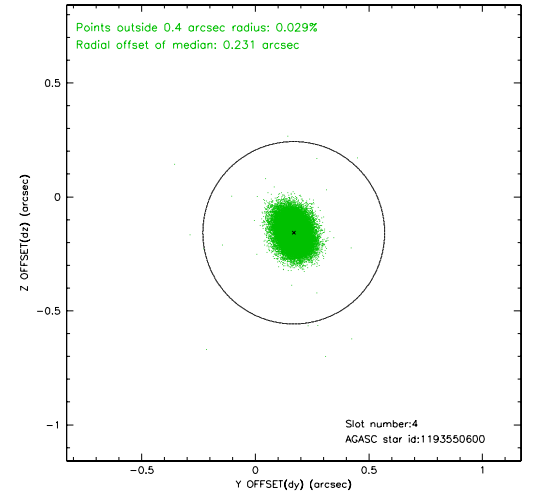
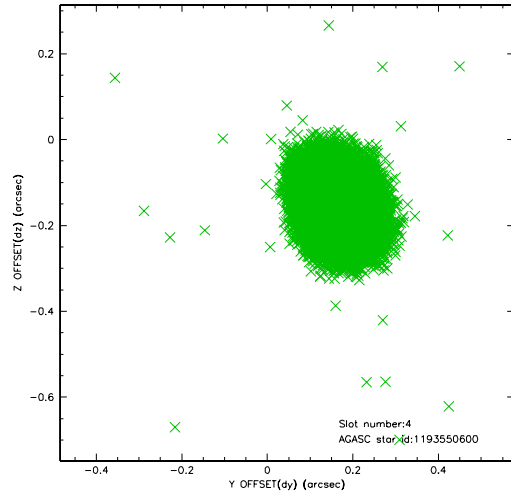
slot	status	id	mag	n_pts	med_dy	med_dz	dr1	dr2	ra	dec	mean_y	mean_z
0	FID	ACIS-S-2	7.10	17477	-0.010	-0.006	0.014	0.023	0.000000	0.000000	-759.98	-1733.37
1	FID	ACIS-S-4	7.20	17479	0.028	0.006	0.016	0.025	0.000000	0.000000	2153.36	175.19
2	FID	ACIS-S-5	7.23	17476	-0.041	0.009	0.017	0.027	0.000000	0.000000	-1812.93	168.79
3	GUIDE	1193550368	8.46	34949	-0.053	0.053	0.064	0.101	317.223863	-63.103269	-21.22	-1782.57
4	GUIDE	1193550600	8.80	34938	0.169	-0.157	0.071	0.115	317.766295	-63.684901	1015.24	235.94
5	GUIDE	1193550640	9.33	34930	0.001	0.029	0.077	0.126	317.782084	-63.005493	-877.39	-1313.66
6	GUIDE	1194067992	8.16	34949	-0.129	0.168	0.060	0.096	318.220361	-64.120775	1762.44	1791.91
7	GUIDE	1194072440	7.28	34954	0.010	-0.094	0.058	0.094	317.530972	-64.025456	2194.22	738.71

## 2.4 Star Slots

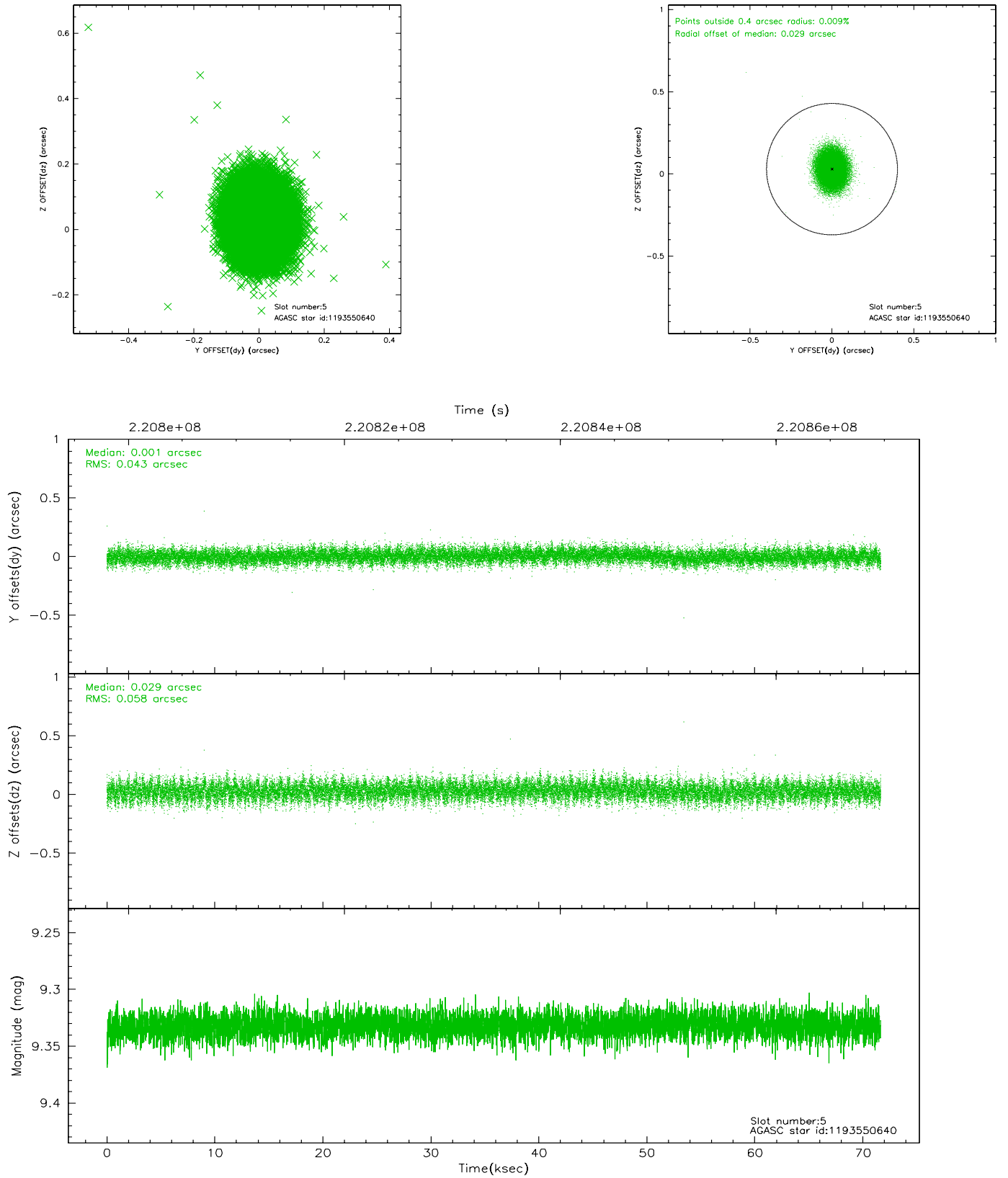
### 2.4.1 Slot 3



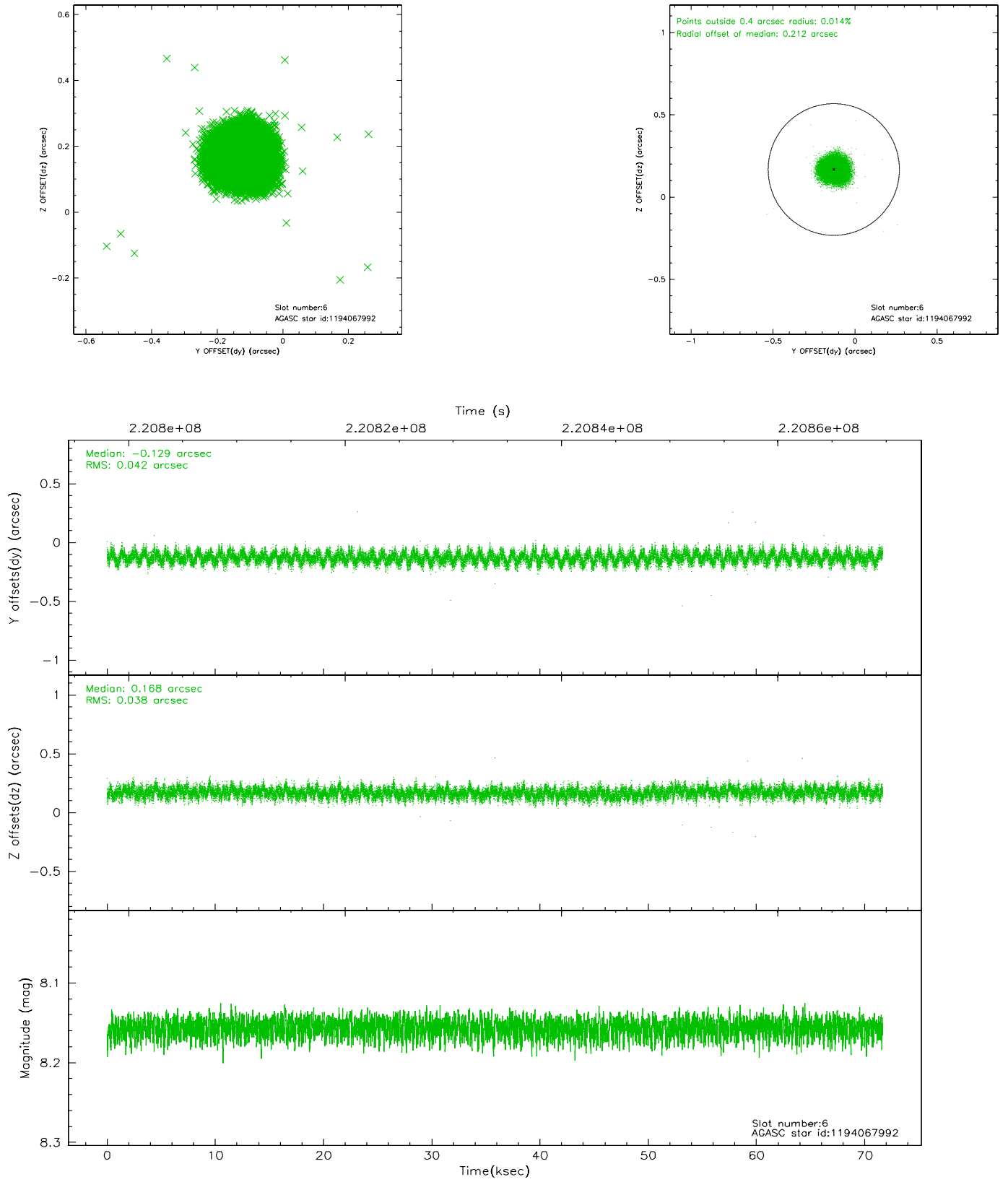
## 2.4.2 Slot 4



### 2.4.3 Slot 5

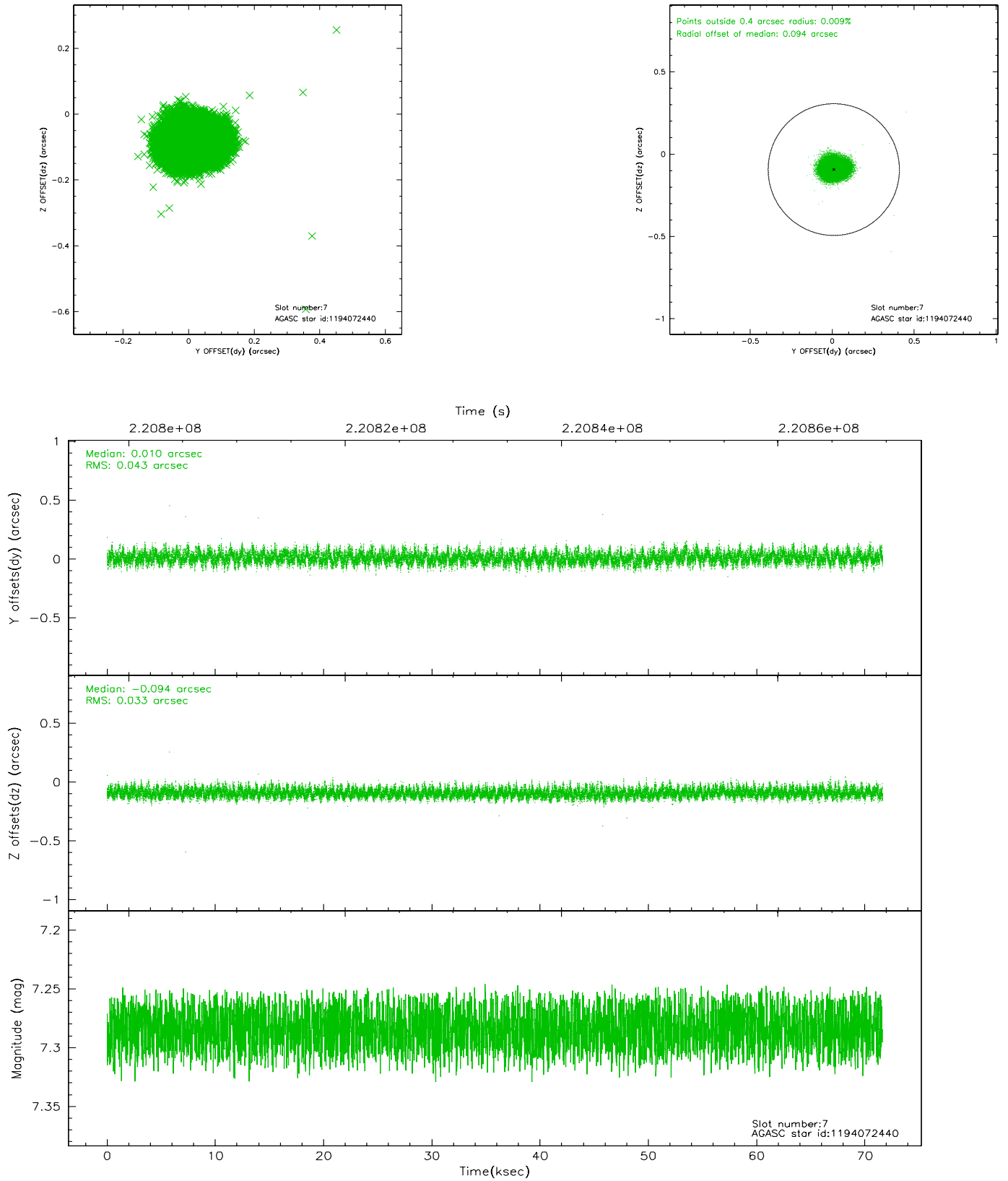


## 2.4.4 Slot 6



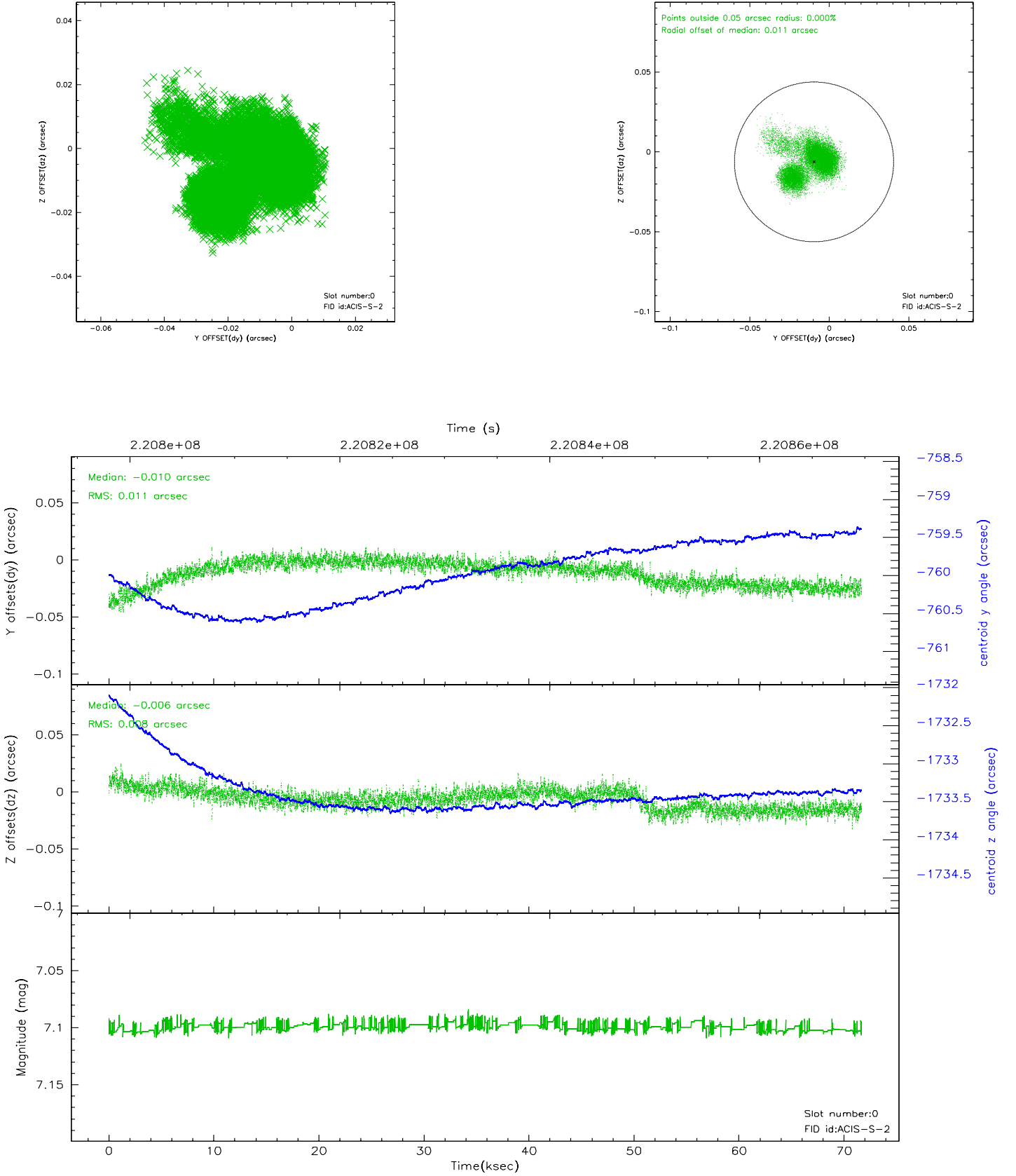


## 2.4.5 Slot 7

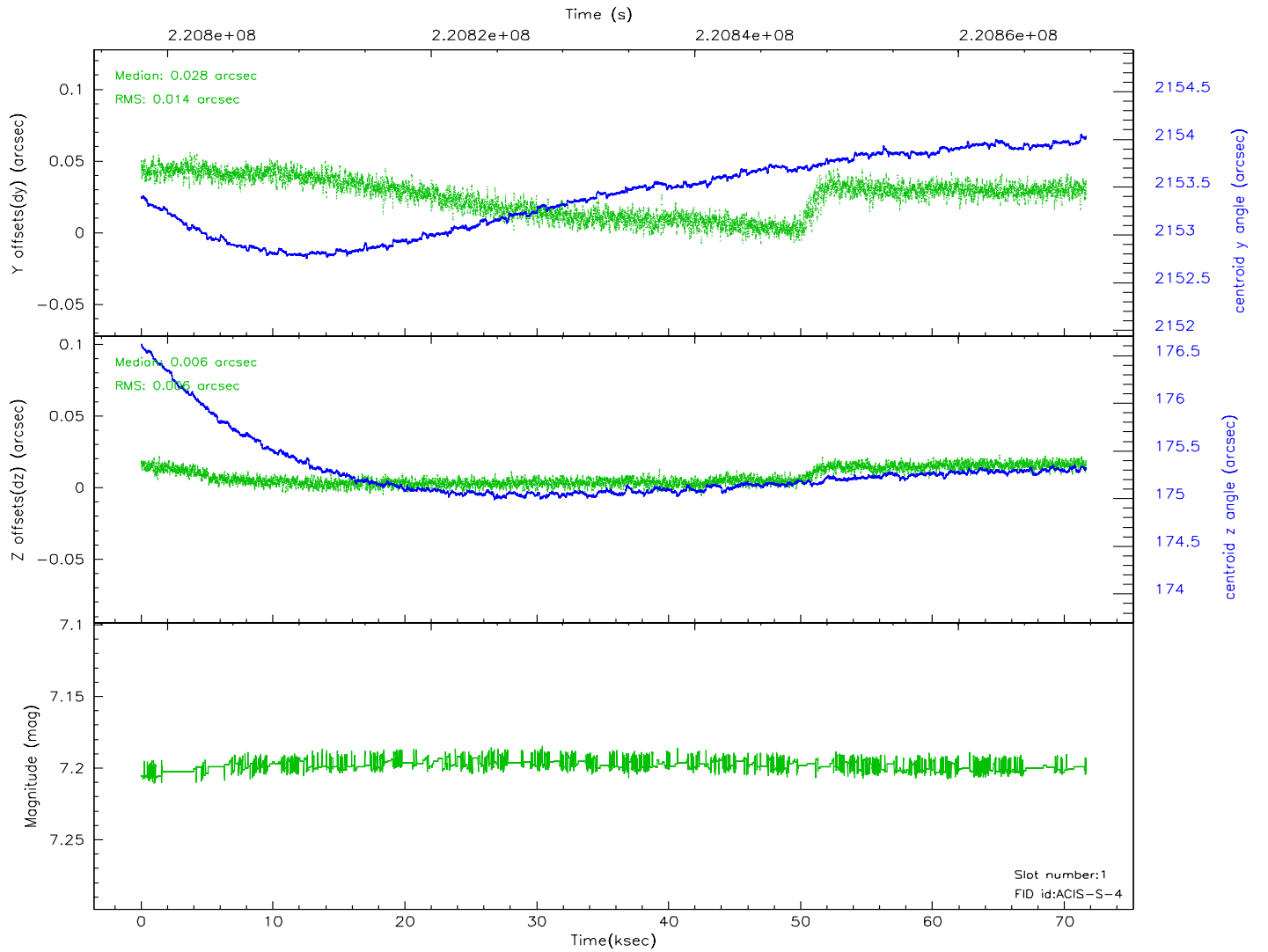
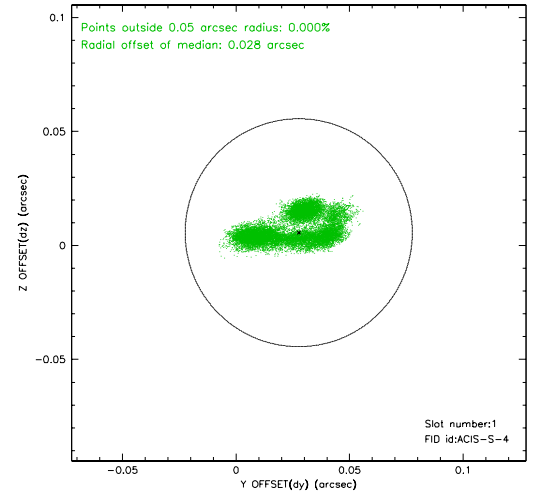
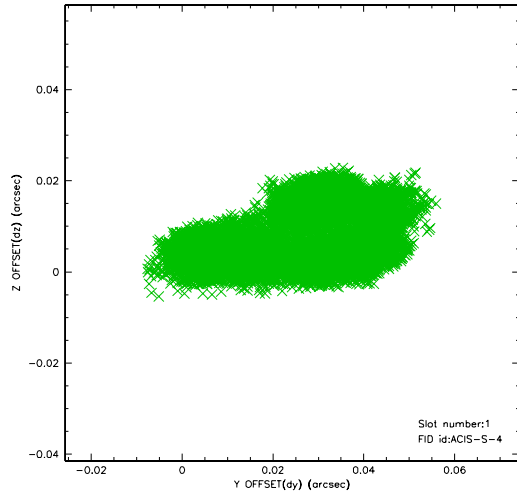


## 2.5 FID Slots

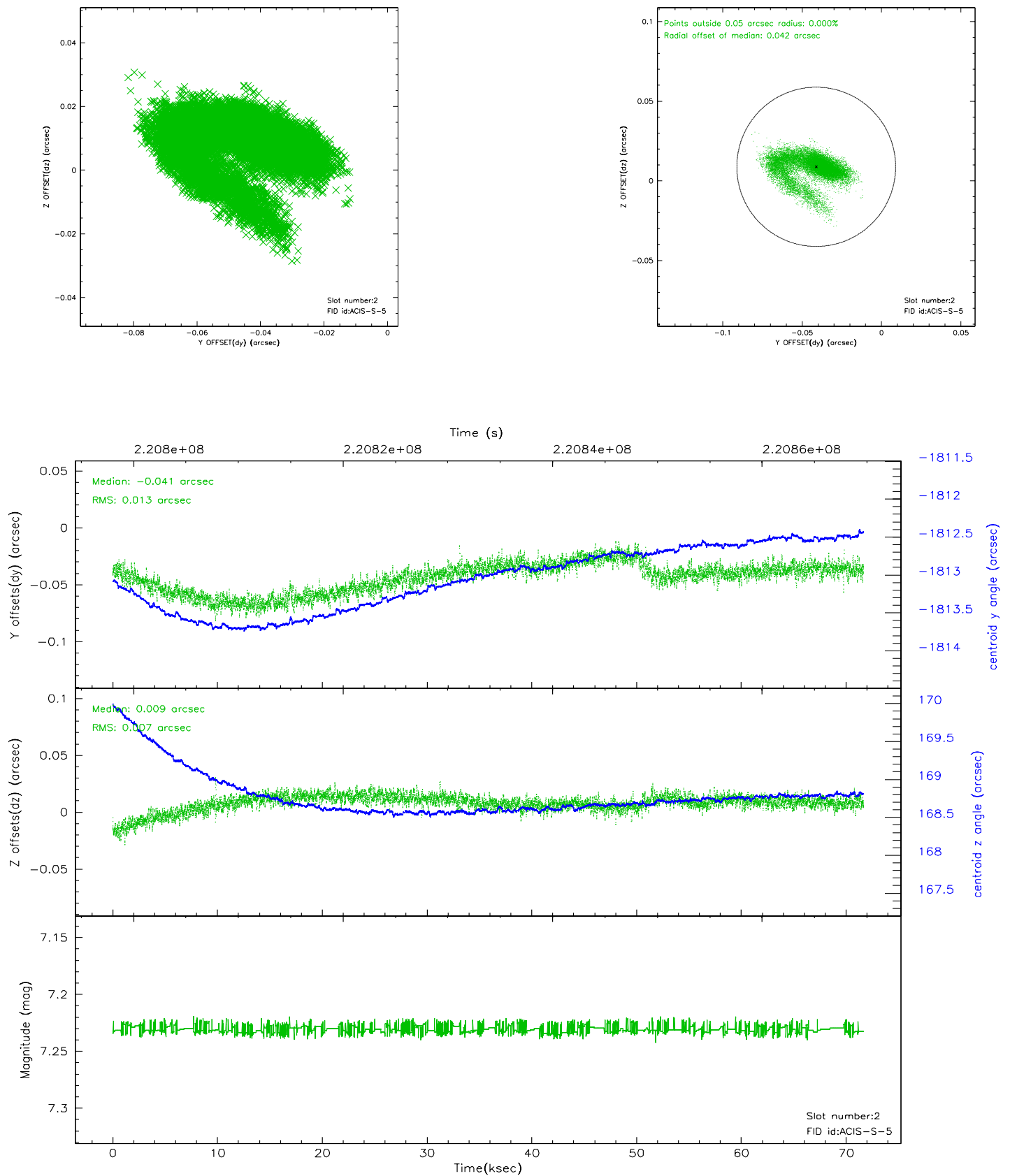
### 2.5.1 Slot 0



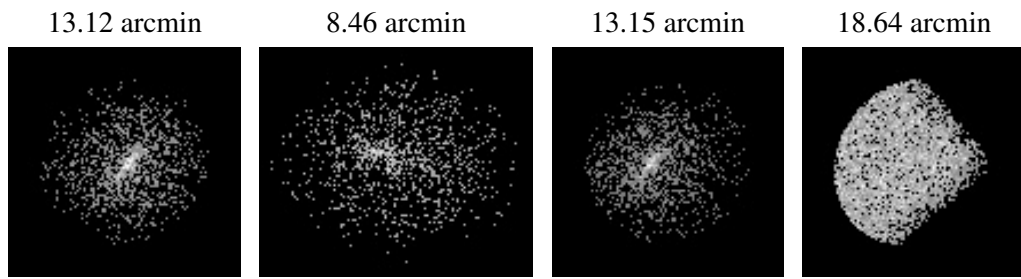
## 2.5.2 Slot 1



### 2.5.3 Slot 2



### 3 Point Sources



## A Summary

### A.1 Status

V&V Scientist	Jen Lauer
V&V Date (YYYY-MM-DD)	2006.04.10
V&V Edition	1
V&V Disposition and Status	OK
V&V Charge Time	71.65339

### A.2 Comments