

# V&V Reference Report

## L2 ASCDS Version : 8.4.3

Observation 5879 - L2 Version 2  
Chandra X-Ray Center

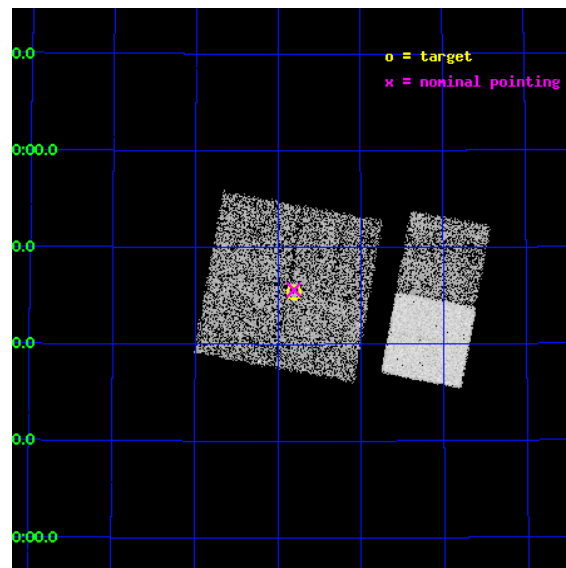
L2 Processing Date : Mar 27 2012

## Contents

<b>1</b>	<b>Front</b>	<b>2</b>
<b>2</b>	<b>OBI</b>	<b>3</b>
2.1	OBI . . . . .	3
2.1.1	Images . . . . .	3
2.1.2	Bias . . . . .	3
2.1.3	Parameters . . . . .	4
2.1.4	Events . . . . .	4
2.2	Compared Parameters . . . . .	5
2.3	Aspect . . . . .	6
2.4	Star Slots . . . . .	9
2.4.1	Slot 3 . . . . .	9
2.4.2	Slot 4 . . . . .	10
2.4.3	Slot 5 . . . . .	11
2.4.4	Slot 6 . . . . .	12
2.4.5	Slot 7 . . . . .	13
2.5	FID Slots . . . . .	14
2.5.1	Slot 0 . . . . .	14
2.5.2	Slot 1 . . . . .	15
2.5.3	Slot 2 . . . . .	16
<b>A</b>	<b>Summary</b>	<b>17</b>
A.1	Status . . . . .	17
A.2	Comments . . . . .	17

# 1 Front

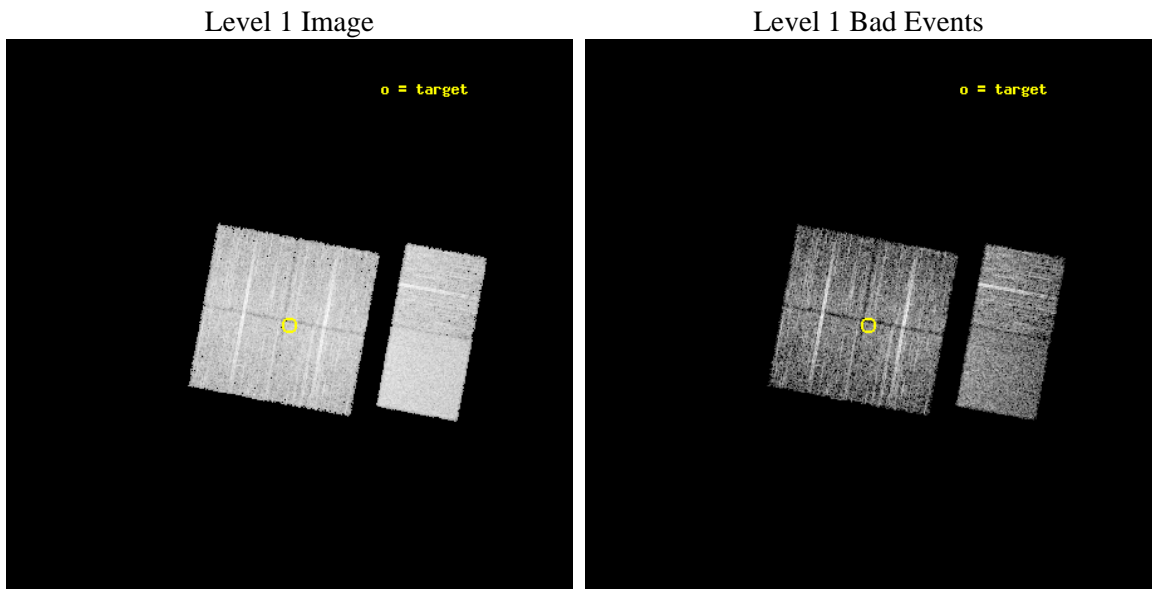
seq_num	900379	Sequence number
obs_id	5879	Observation id
title	The Spectral Energy Distributions of AGN: A Shallow Survey of the ELAIS-N1 Field	Proposal title
observer	Prof Kirpal Nandra	Principal investigator
object	N1_25	Source name
dtcycle	0	&#160
cycle	P	events from which exps? Prim/Second/Both
ra_targ	242.950417	Observer's specified target RA [deg]
dec_targ	54.756194	Observer's specified target Dec [deg]
ra_nom	242.95203280502	Nominal RA [deg]
dec_nom	54.760640412531	Nominal Dec [deg]
roll_nom	100.45703900098	Nominal Roll [deg]
revision	2	Processing version of data
ontime	4850.3470126688	Sum of GTIs [s]
livetime	4788.9289982661	Livetime [s]
ontime0	4853.4648729861	Sum of GTIs [s]
ontime1	4853.5059129596	Sum of GTIs [s]
ontime2	4853.5469529629	Sum of GTIs [s]
ontime3	4850.3470126688	Sum of GTIs [s]
ontime6	4853.6700729728	Sum of GTIs [s]
ontime7	4853.6290329695	Sum of GTIs [s]
l2events	44866	Number of level 2 events



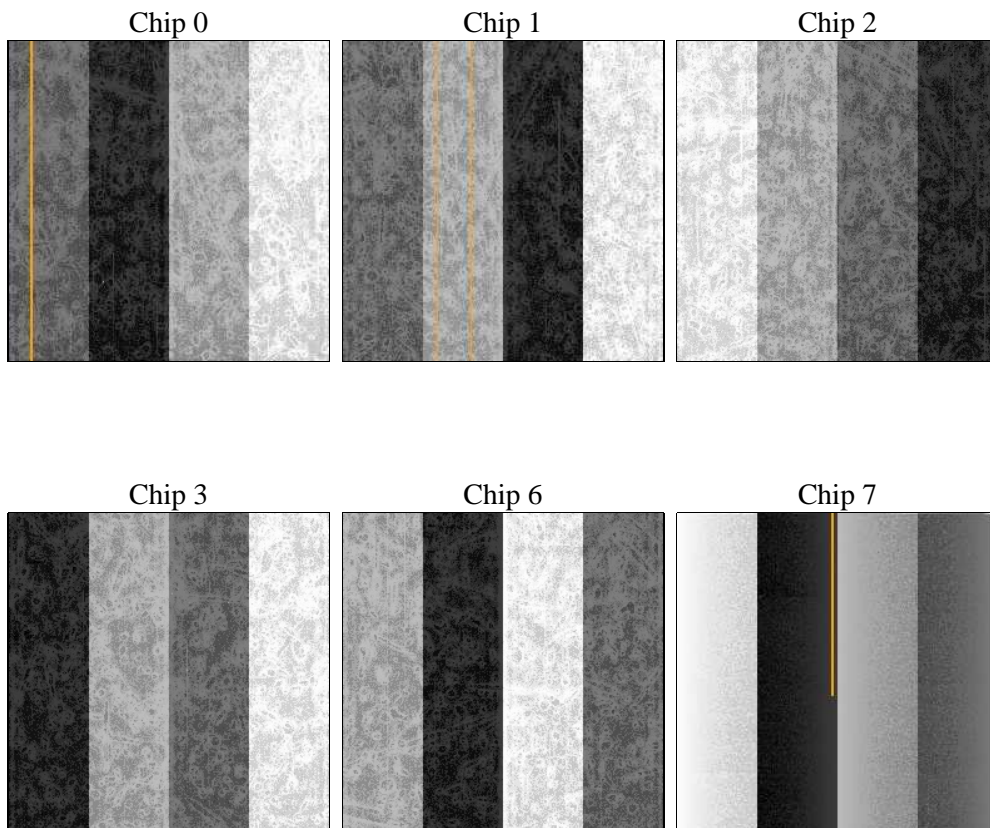
## 2 OBI

### 2.1 OBI

#### 2.1.1 Images



#### 2.1.2 Bias



### 2.1.3 Parameters

obi_num	0	Obi number	sched_exp_time	4900.000000	[s] Scheduled observation exposure time
ascdsver	8.4.3	Processing system revision	ontime	4850.3470126688	Sum of GTIs [s]
caldsver	4.4.8	&#160	ontime0	4853.4648729861	Sum of GTIs [s]
date	2012-03-27T05:14:23	Date and time of file creation	ontime1	4853.5059129596	Sum of GTIs [s]
revision	2	Processing version of data	ontime2	4853.5469529629	Sum of GTIs [s]
			ontime3	4850.3470126688	Sum of GTIs [s]
			ontime6	4853.6700729728	Sum of GTIs [s]
			ontime7	4853.6290329695	Sum of GTIs [s]
			l1events	262632	Number of level 1 events

### 2.1.4 Events

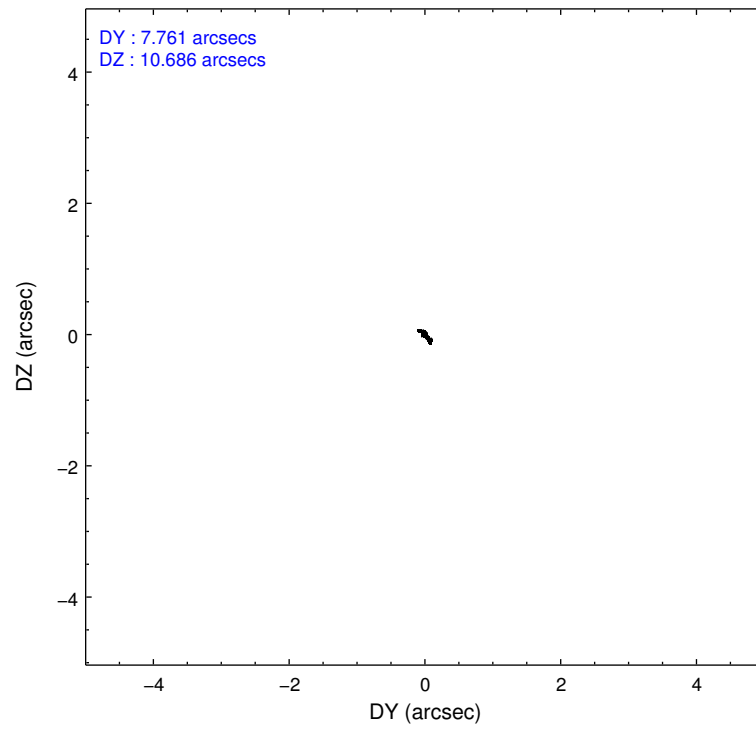
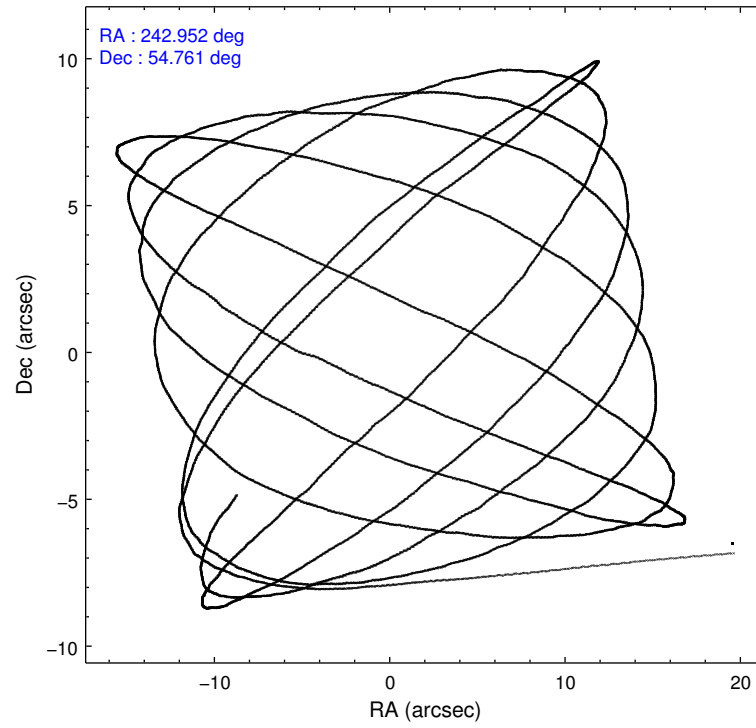
	ccd 0	ccd 1	ccd 2	ccd 3	ccd 6	ccd 7		ccd 0	ccd 1	ccd 2	ccd 3	ccd 6	ccd 7
level 1 events	39400	39048	41434	41298	44302	57150	grade 0 events	2192	2052	2132	2198	1915	2121
rejected events	34213	33779	36600	36202	39234	33653		5%	5%	5%	5%	4%	3%
rejected %	86%	86%	88%	87%	88%	58%	grade 1 events	17	20	28	32	28	63
								0%	0%	0%	0%	0%	0%
							grade 2 events	1119	1162	1010	964	1125	4750
								2%	2%	2%	2%	2%	8%
							grade 3 events	553	550	437	488	489	2003
								1%	1%	1%	1%	1%	3%
							grade 4 events	480	476	441	523	481	2023
								1%	1%	1%	1%	1%	3%
							grade 5 events	1634	1772	1570	1872	1957	5454
								4%	4%	3%	4%	4%	9%
							grade 6 events	851	1041	817	928	1058	12608
								2%	2%	1%	2%	2%	22%
							grade 7 events	32554	31975	34999	34293	37249	28128
								82%	81%	84%	83%	84%	49%

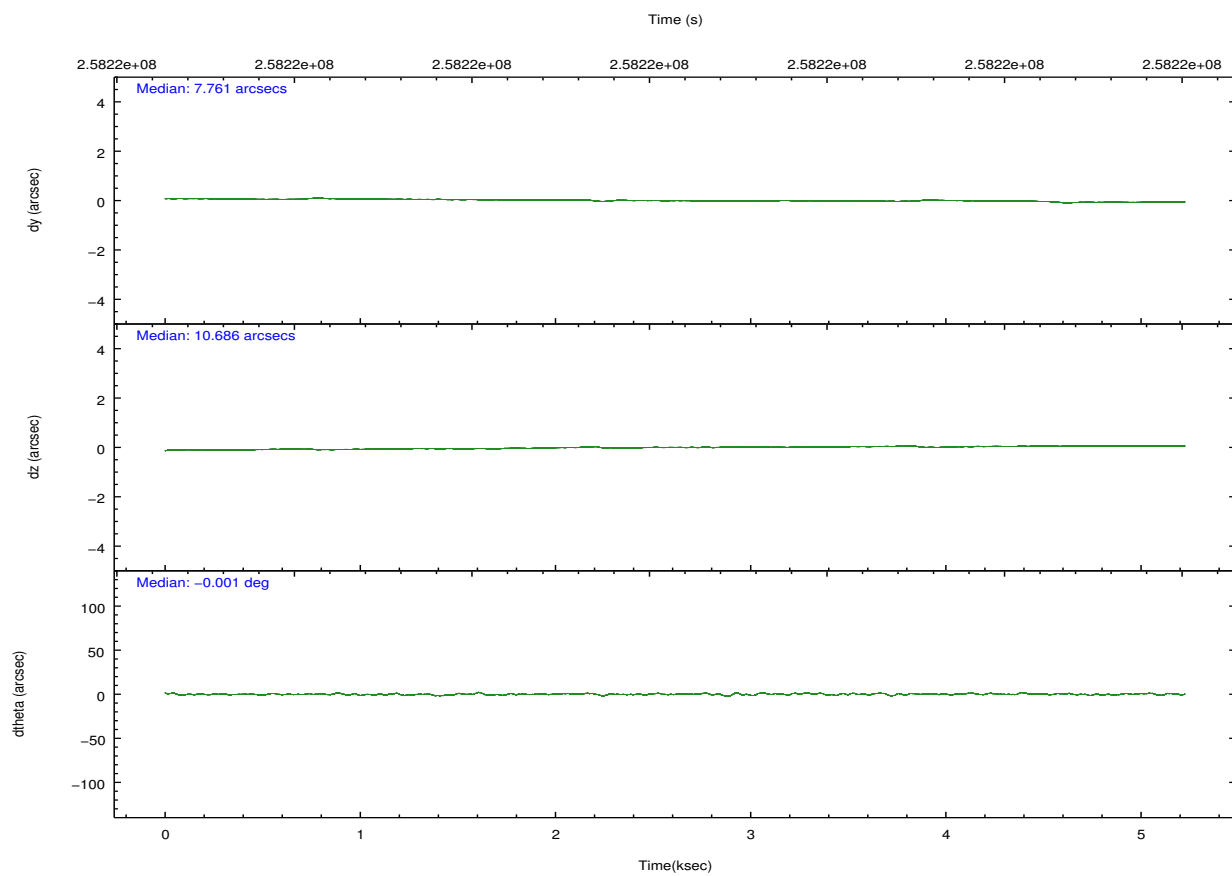
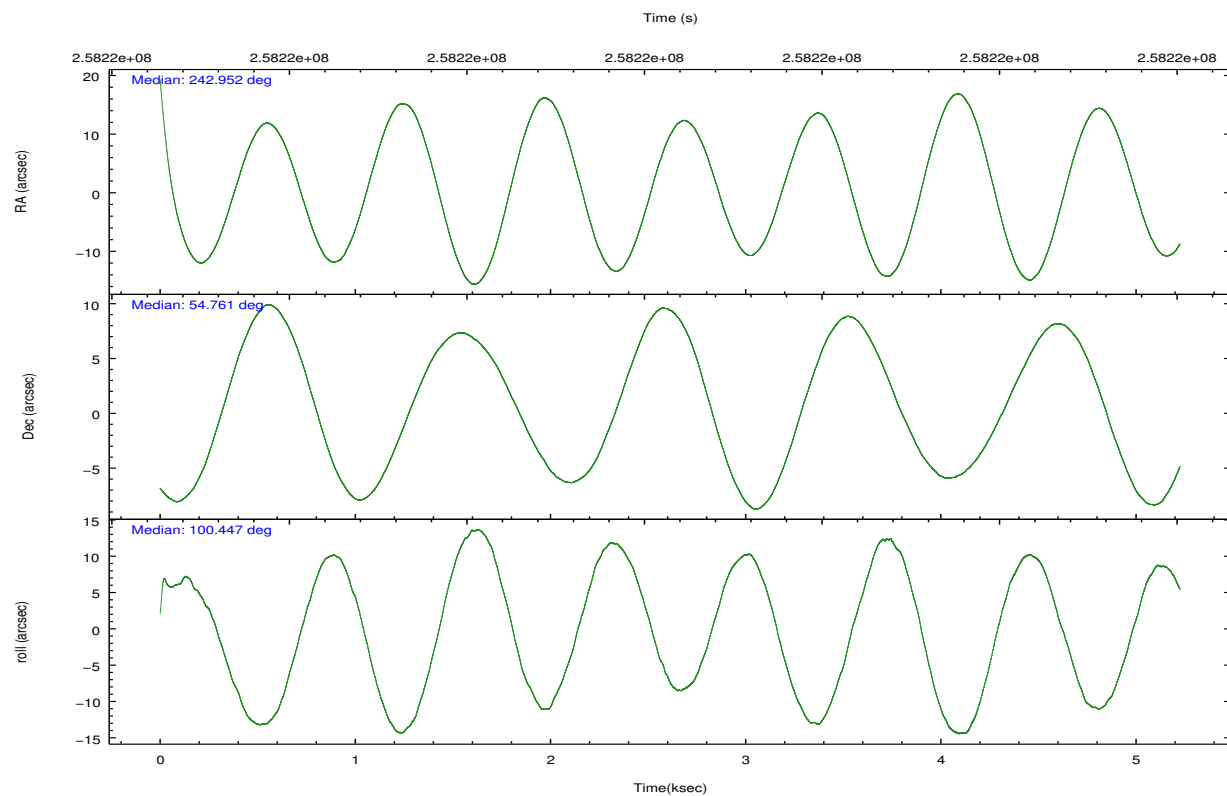


## 2.2 Compared Parameters

Parameter	Planned	Actual	Parameter	Planned	Actual
Instrument	ACIS	ACIS	Obspar format version number	7	7
Detector	ACIS-012367	ACIS-012367	Obspar file type	PREDICTED	ACTUAL
Grating	NONE	NONE	Obspar update status	NONE	UPDATED
Data mode	VFAINT	VFAINT	Number of optional ACIS chips dropped	0	0
Observation mode	POINTING	POINTING	On-chip summing requested	N	N
[deg] Pointing RA	242.983080	242.9520328050196	Subarray requested	NONE	NONE
[deg] Pointing Dec	54.739964	54.76064041253069	Alternating exposures requested	N	N
[deg] Pointing Roll	100.222953	100.4570390009831	[s] Primary exposure time	0.000000	3.2
[mm] SIM focus pos	-0.782348	-0.7809083437167272			
[mm] SIM defocus	0	0.001439871863259334			
[mm] SIM translation stage pos	-233.592463	-233.5874344608287			
[mm] SIM translation stage offset	0	-0.005018542100998502			
[s] Observation start time (MET)	258218853.184000	258217821.65812			
Observation start date	2006-03-08T15:26:28	2006-03-08T15:10:21			
[s] Observation end time (MET)	258223753.184000	258223887.6084			
Observation end date	2006-03-08T16:48:08	2006-03-08T16:51:27			
Read mode	TIMED	TIMED			

## 2.3 Aspect



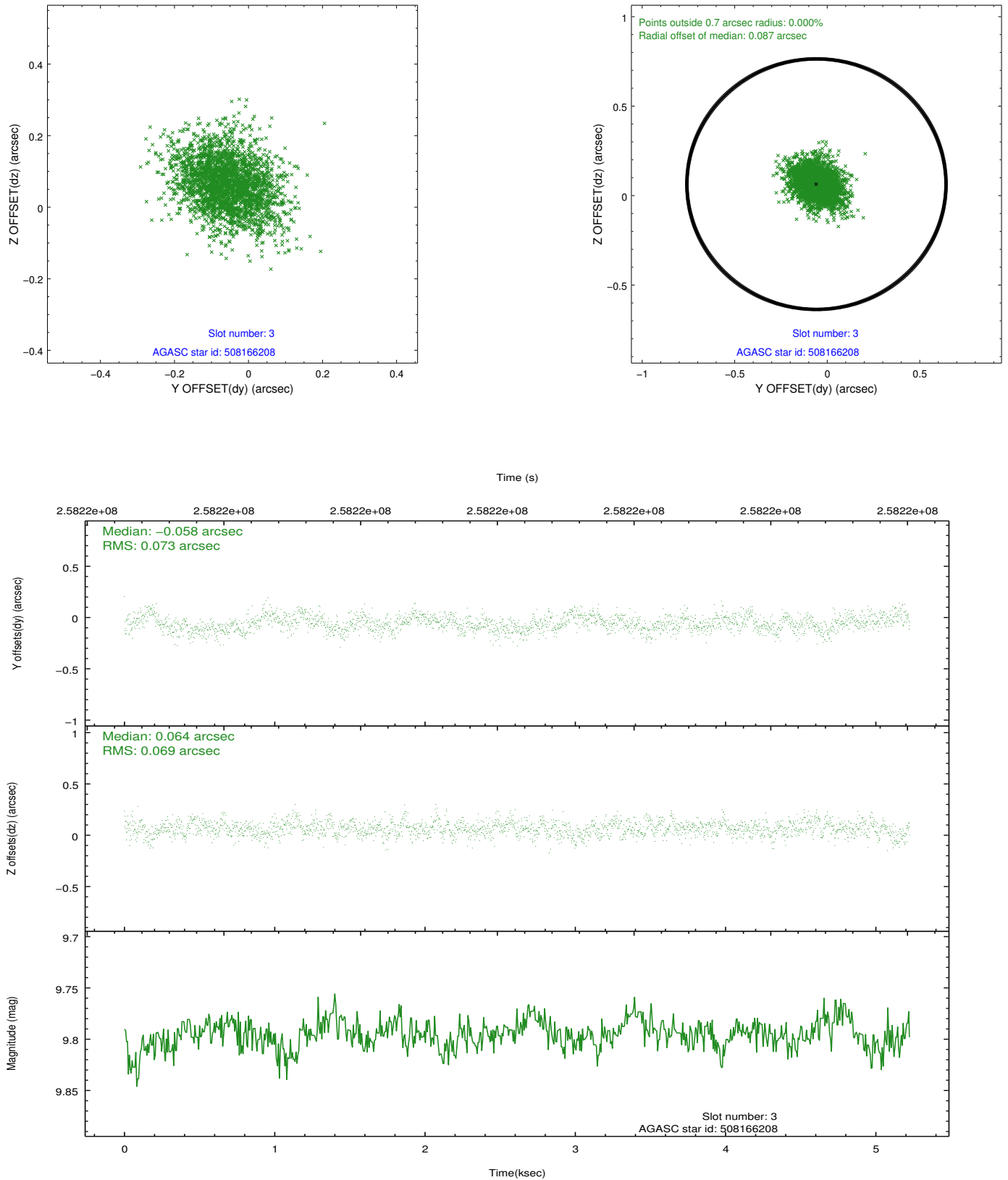


### Slot Statistics

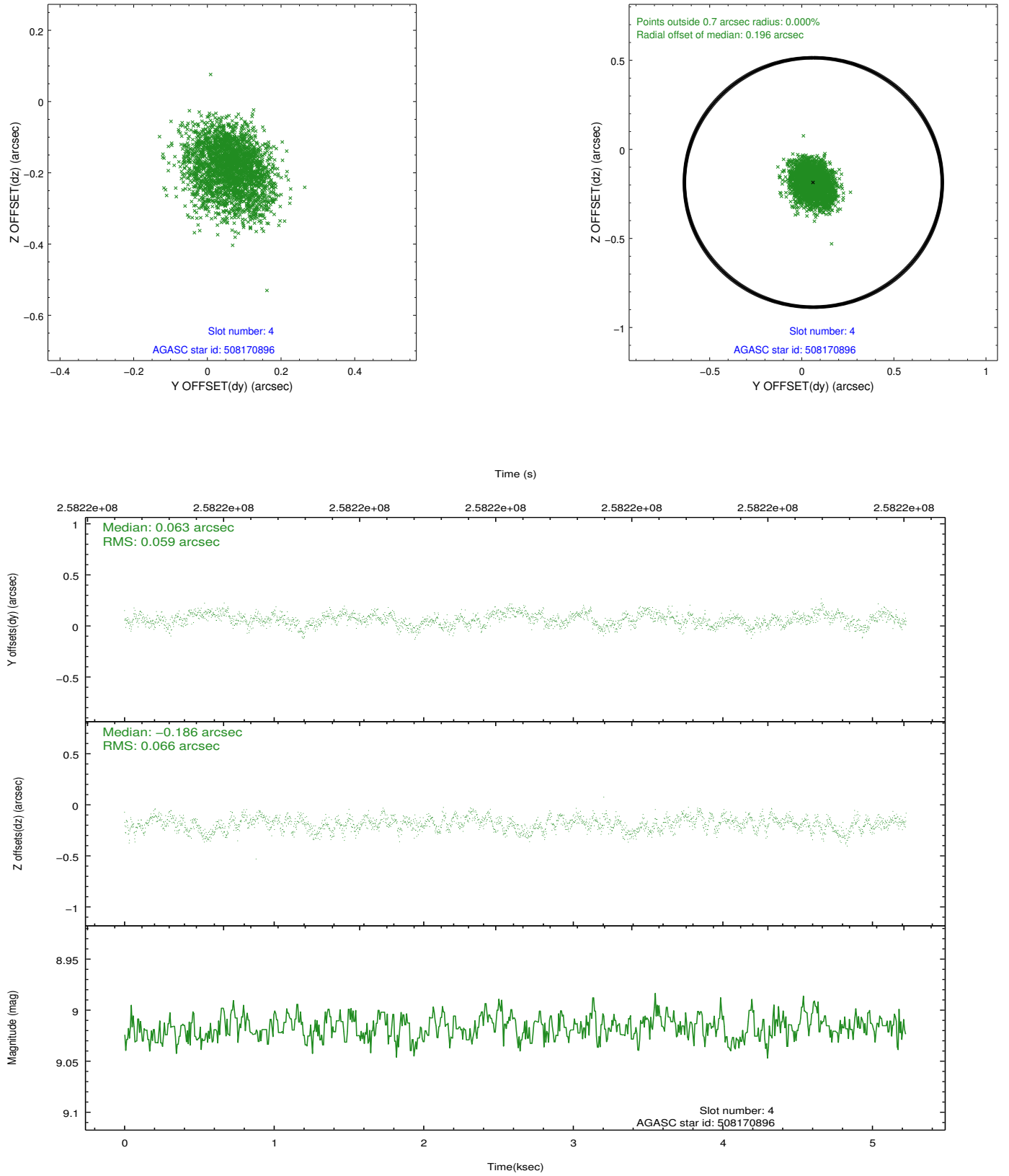
slot	status	id	mag	n_pts	med_dy	med_dz	dr1	dr2	ra	dec	mean_y	mean_z
0	FID	ACIS-I-2	7.14	1274	-0.082	-0.096	0.010	0.020	0.000000	0.000000	-762.37	-840.61
1	FID	ACIS-I-4	7.17	1275	0.189	0.077	0.007	0.016	0.000000	0.000000	2151.45	1065.12
2	FID	ACIS-I-5	7.22	1275	-0.207	0.088	0.010	0.017	0.000000	0.000000	-1814.81	1064.34
3	GUIDE	508166208	9.79	2543	-0.058	0.064	0.104	0.177	243.617118	54.978511	619.04	-1442.48
4	GUIDE	508170896	9.02	2548	0.063	-0.186	0.095	0.151	242.052968	54.527984	-393.08	2044.54
5	GUIDE	508172800	7.90	2550	-0.110	0.017	0.051	0.083	242.573753	54.657892	-136.97	891.66
6	GUIDE	508183040	9.47	2548	0.080	0.054	0.110	0.174	243.957509	54.419234	-1483.79	-1806.13
7	GUIDE	508184632	9.98	2543	0.026	0.053	0.132	0.214	244.060656	54.215714	-2242.89	-1901.07

## 2.4 Star Slots

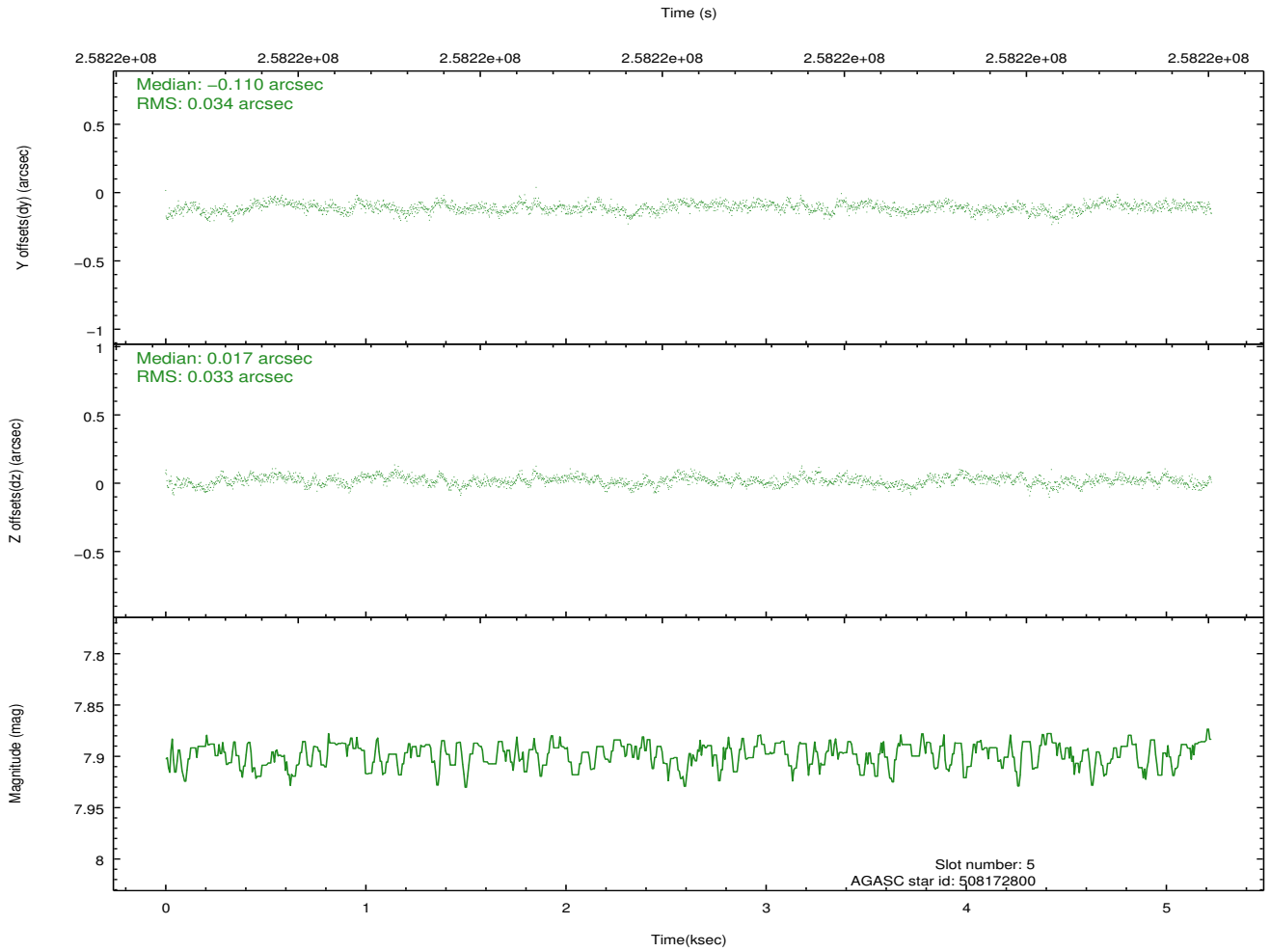
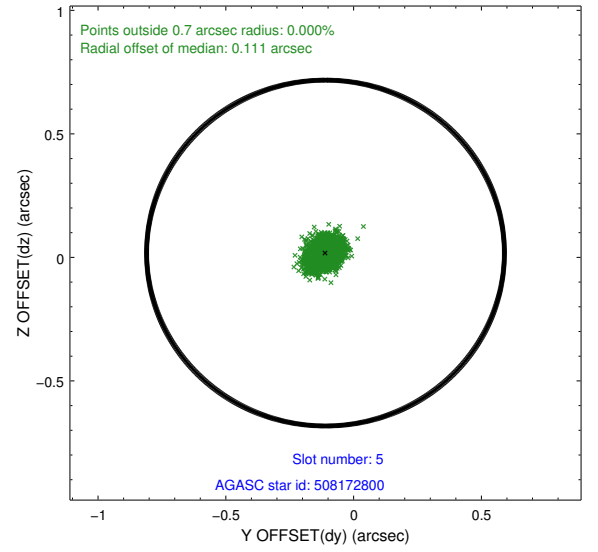
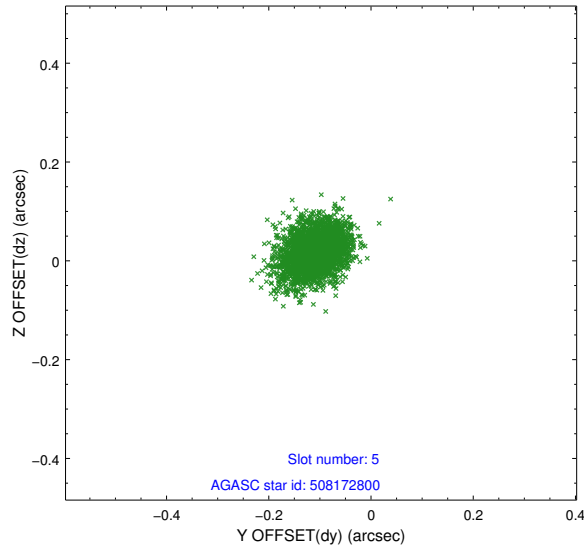
### 2.4.1 Slot 3



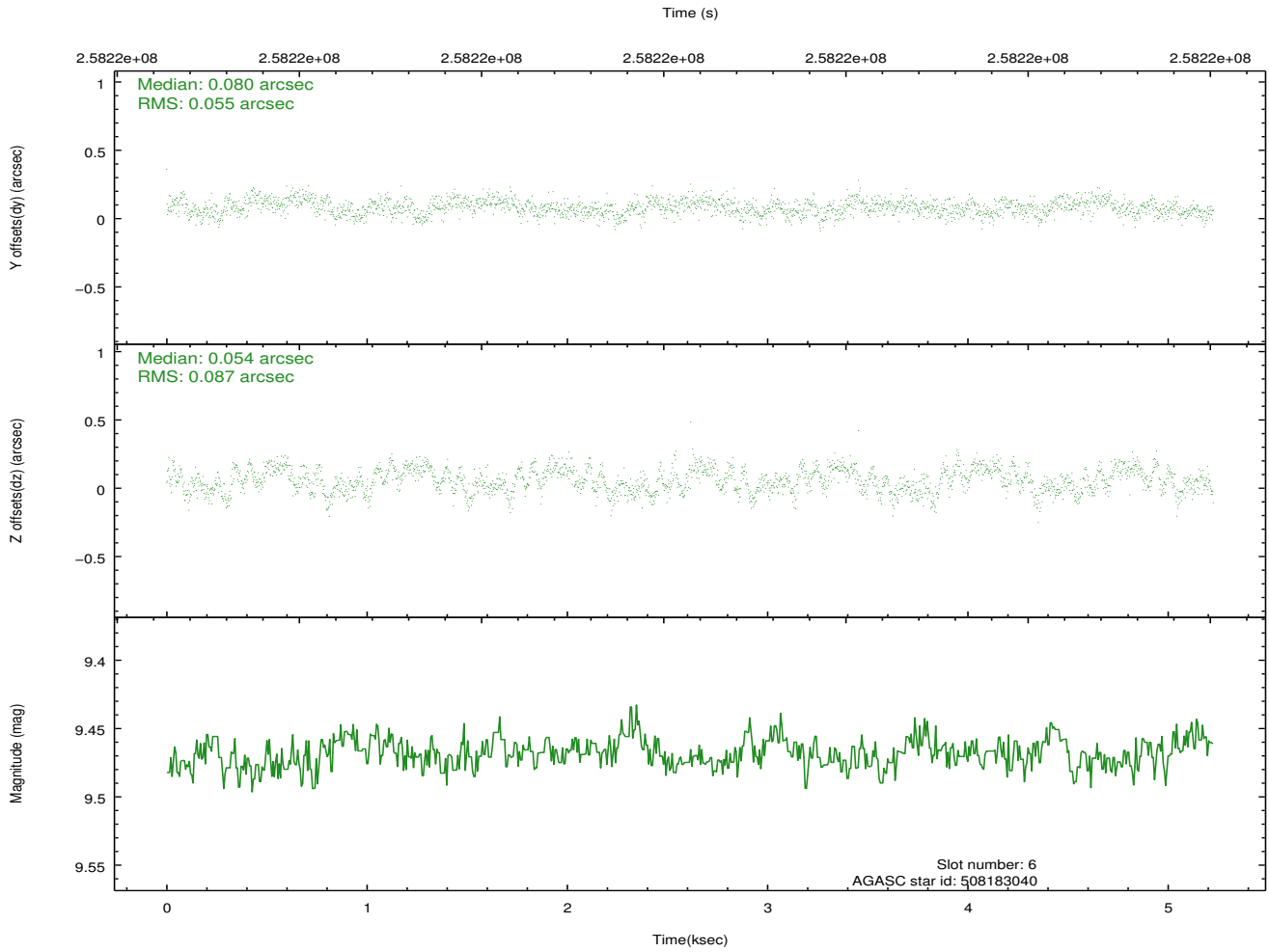
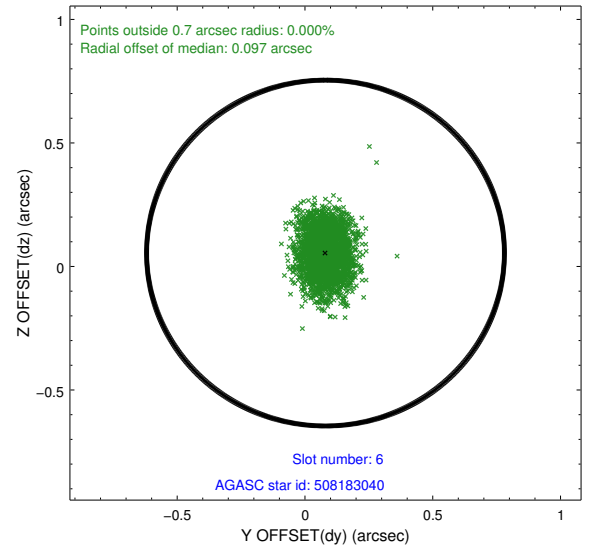
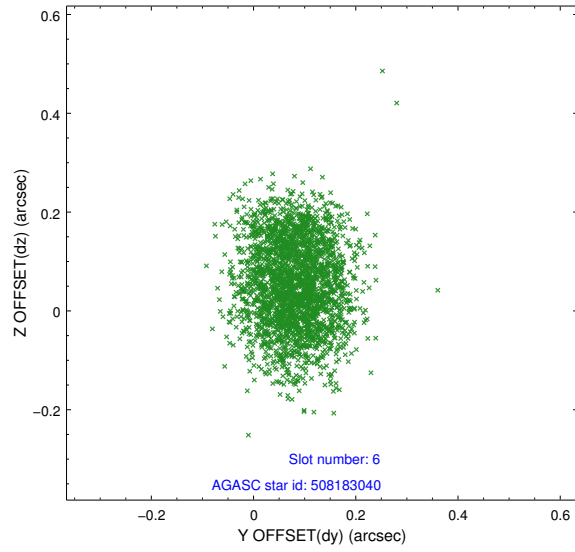
## 2.4.2 Slot 4



### 2.4.3 Slot 5

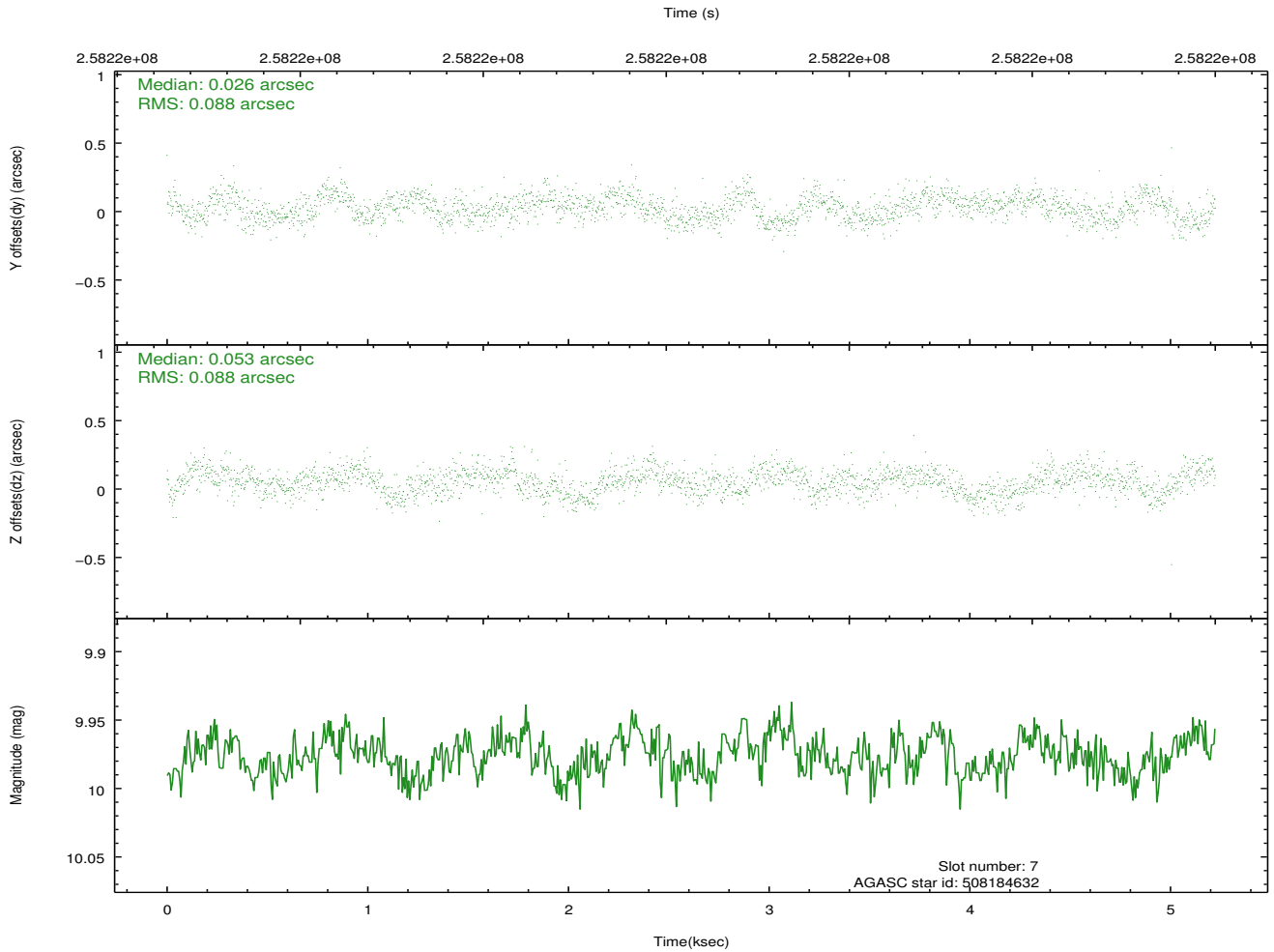
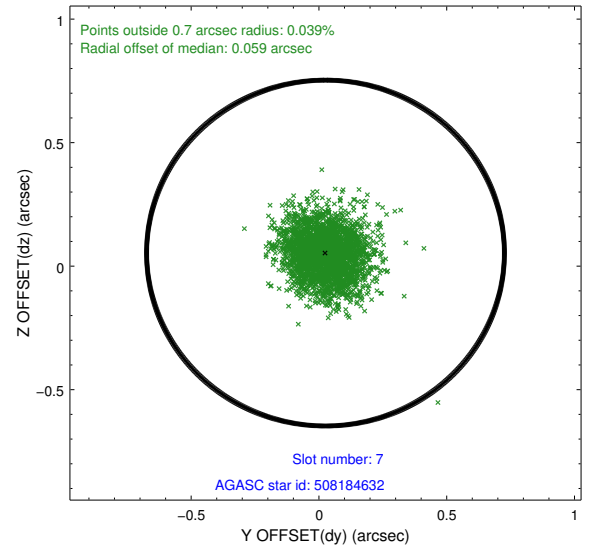
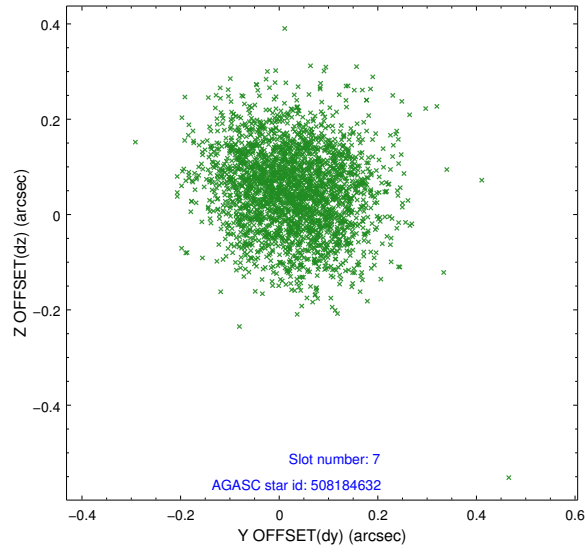


## 2.4.4 Slot 6



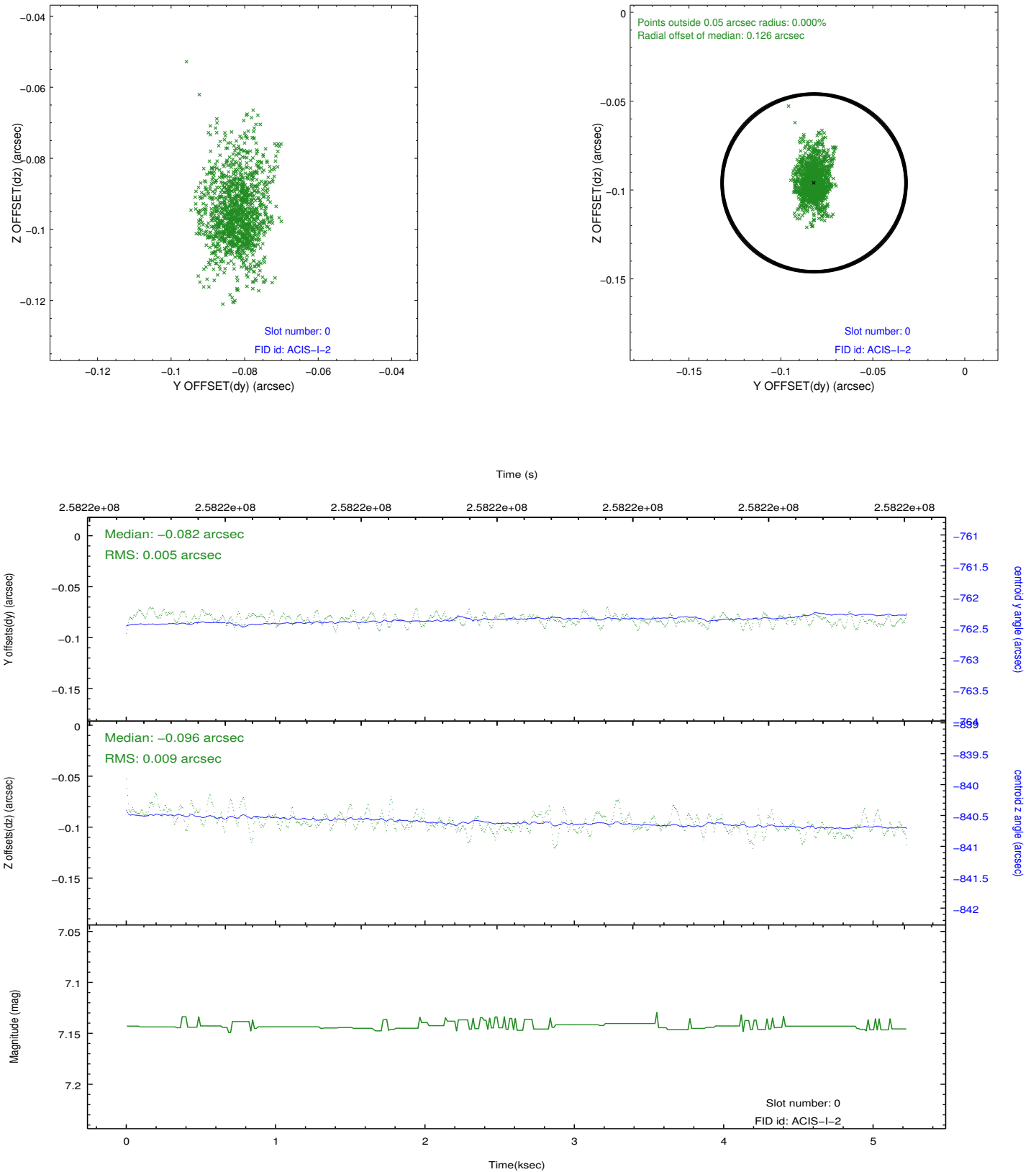


## 2.4.5 Slot 7

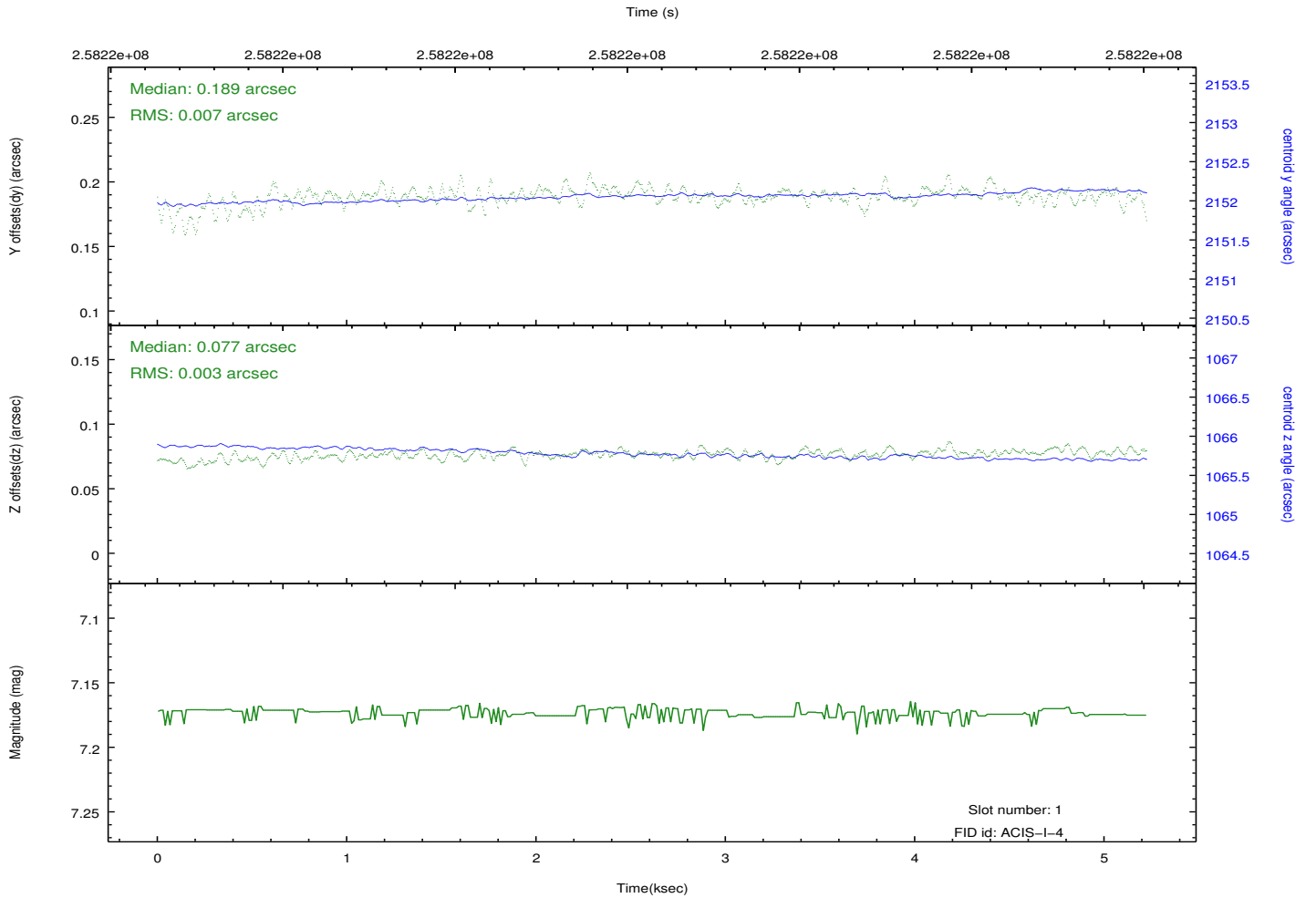
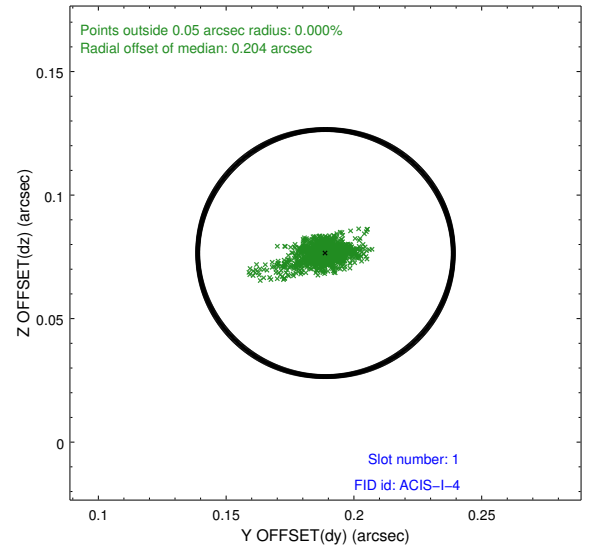
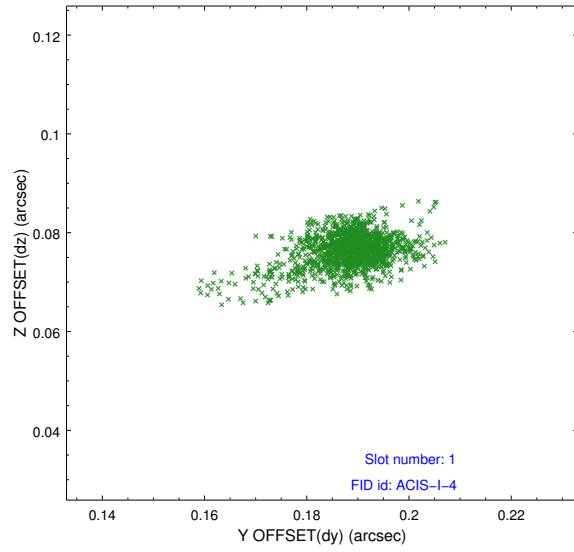


## 2.5 FID Slots

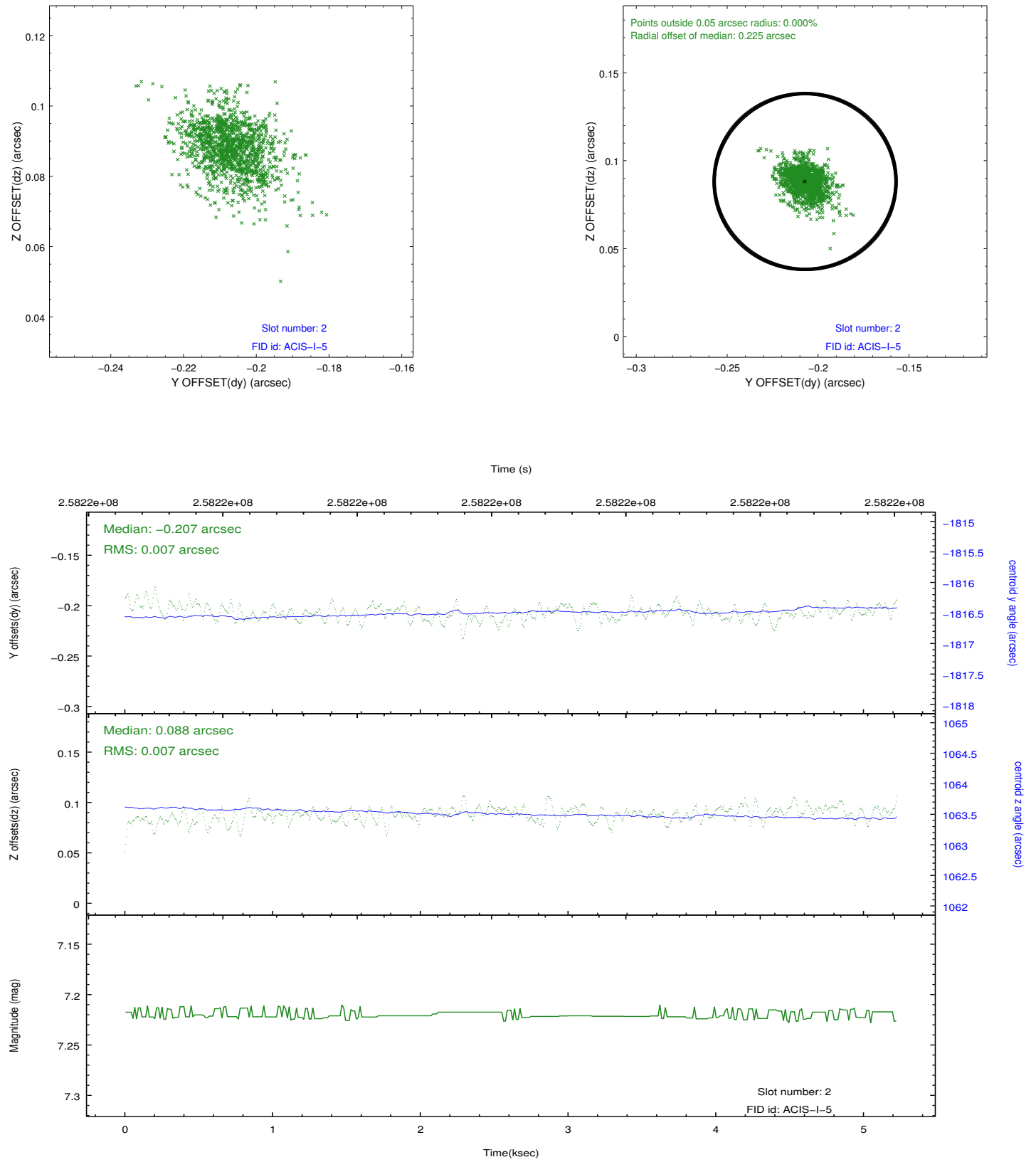
### 2.5.1 Slot 0



## 2.5.2 Slot 1



### 2.5.3 Slot 2



# A Summary

## A.1 Status

V&V Scientist	Beth Sundheim
V&V Date (YYYY-MM-DD)	2012.03.28
V&V Edition	1
V&V Disposition and Status	OK
V&V Charge Time	4.851159

## A.2 Comments

Joint proposal with NOAO.