

V&V Reference Report

L2 ASCDS Version : 8.4.3

Observation 5877 - L2 Version 2
Chandra X-Ray Center

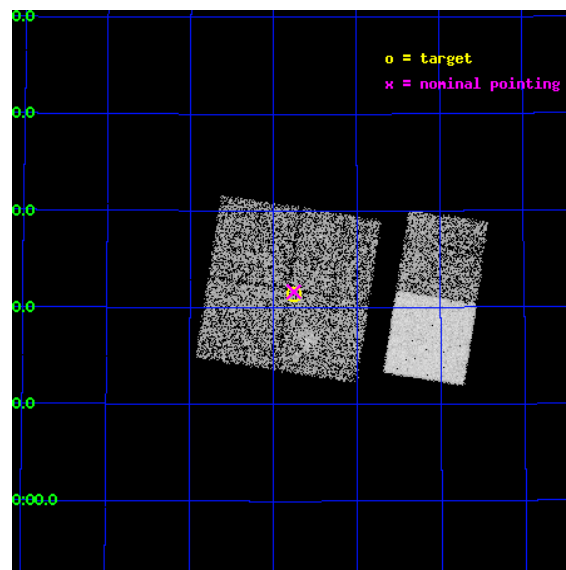
L2 Processing Date : Mar 27 2012

Contents

1	Front	2
2	OBI	3
2.1	OBI	3
2.1.1	Images	3
2.1.2	Bias	3
2.1.3	Parameters	4
2.1.4	Events	4
2.2	Compared Parameters	5
2.3	Aspect	6
2.4	Star Slots	9
2.4.1	Slot 3	9
2.4.2	Slot 4	10
2.4.3	Slot 5	11
2.4.4	Slot 6	12
2.4.5	Slot 7	13
2.5	FID Slots	14
2.5.1	Slot 0	14
2.5.2	Slot 1	15
2.5.3	Slot 2	16
A	Summary	17
A.1	Status	17
A.2	Comments	17

1 Front

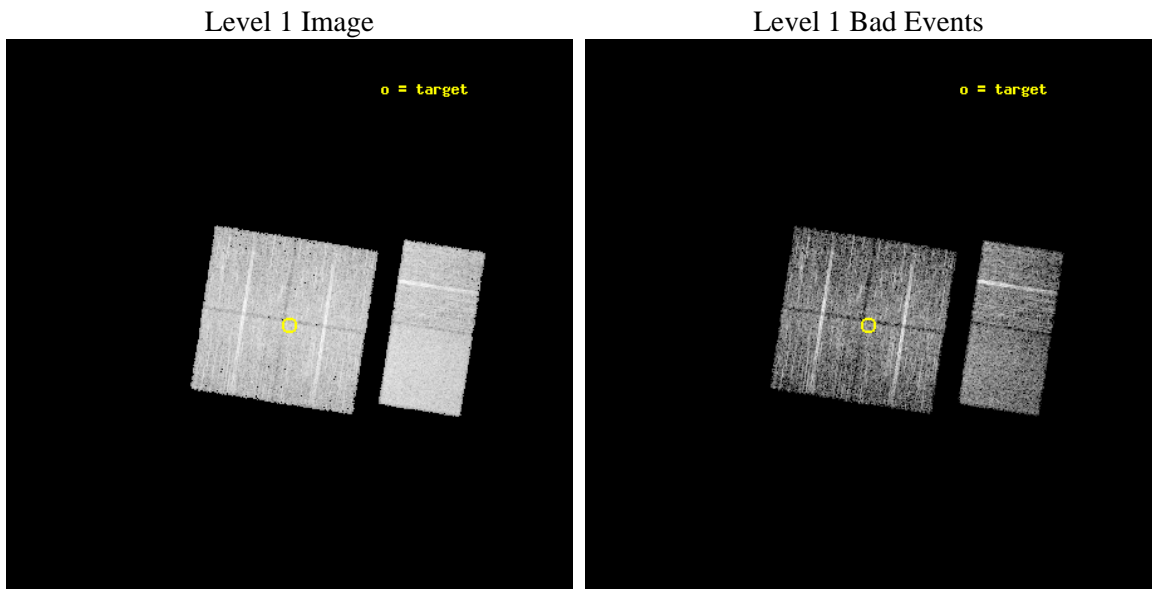
seq_num	900377	Sequence number
obs_id	5877	Observation id
title	The Spectral Energy Distributions of AGN: A Shallow Survey of the ELAIS-N1 Field	Proposal title
observer	Prof Kirpal Nandra	Principal investigator
object	N1_23	Source name
dtcycle	0	
cycle	P	events from which exps? Prim/Second/Both
ra_targ	242.937083	Observer's specified target RA [deg]
dec_targ	54.356194	Observer's specified target Dec [deg]
ra_nom	242.93904026271	Nominal RA [deg]
dec_nom	54.360782581384	Nominal Dec [deg]
roll_nom	98.882730376215	Nominal Roll [deg]
revision	2	Processing version of data
ontime	5129.5999808908	Sum of GTIs [s]
livetime	5064.6458972584	Livetime [s]
ontime0	5129.5999808908	Sum of GTIs [s]
ontime1	5129.5999808908	Sum of GTIs [s]
ontime2	5129.5999808908	Sum of GTIs [s]
ontime3	5129.5999808908	Sum of GTIs [s]
ontime6	5126.3590005636	Sum of GTIs [s]
ontime7	5129.5999808908	Sum of GTIs [s]
l2events	47297	Number of level 2 events



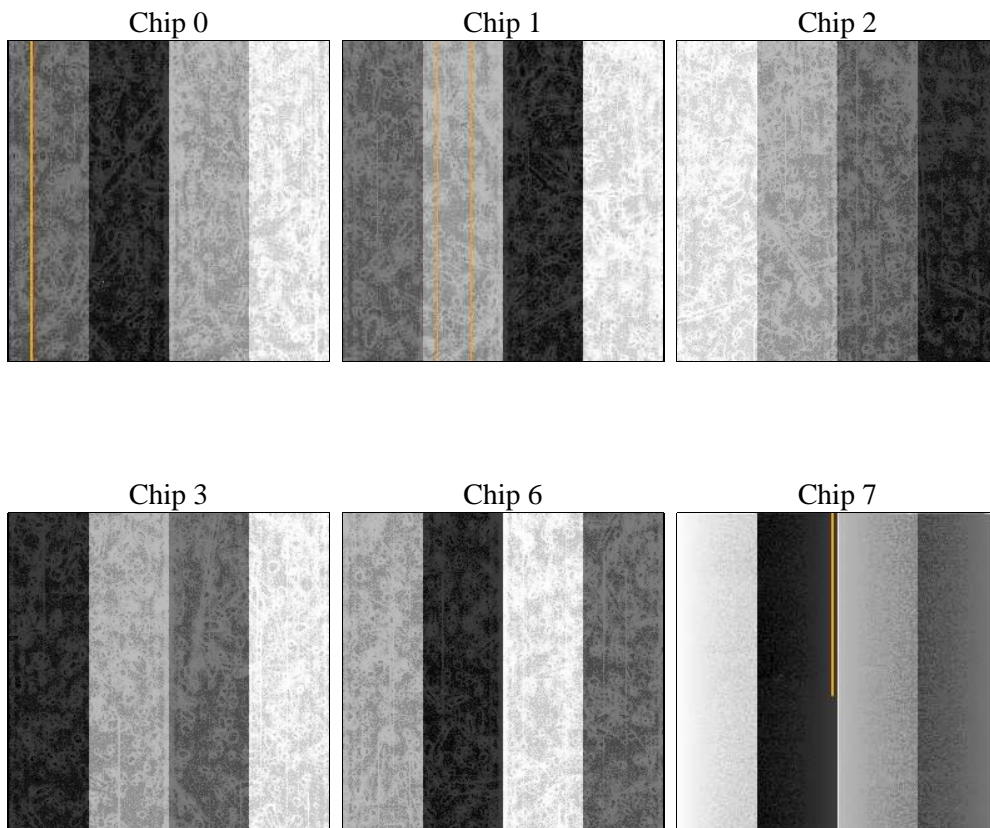
2 OBI

2.1 OBI

2.1.1 Images



2.1.2 Bias



2.1.3 Parameters

obi_num	0	Obi number	sched_exp_time	5000.000000	[s] Scheduled observation exposure time
ascdsver	8.4.3	Processing system revision	ontime	5129.5999808908	Sum of GTIs [s]
caldsver	4.4.8	 	ontime0	5129.5999808908	Sum of GTIs [s]
date	2012-03-27T03:53:46	Date and time of file creation	ontime1	5129.5999808908	Sum of GTIs [s]
revision	2	Processing version of data	ontime2	5129.5999808908	Sum of GTIs [s]
			ontime3	5129.5999808908	Sum of GTIs [s]
			ontime6	5126.3590005636	Sum of GTIs [s]
			ontime7	5129.5999808908	Sum of GTIs [s]
			l1events	344744	Number of level 1 events

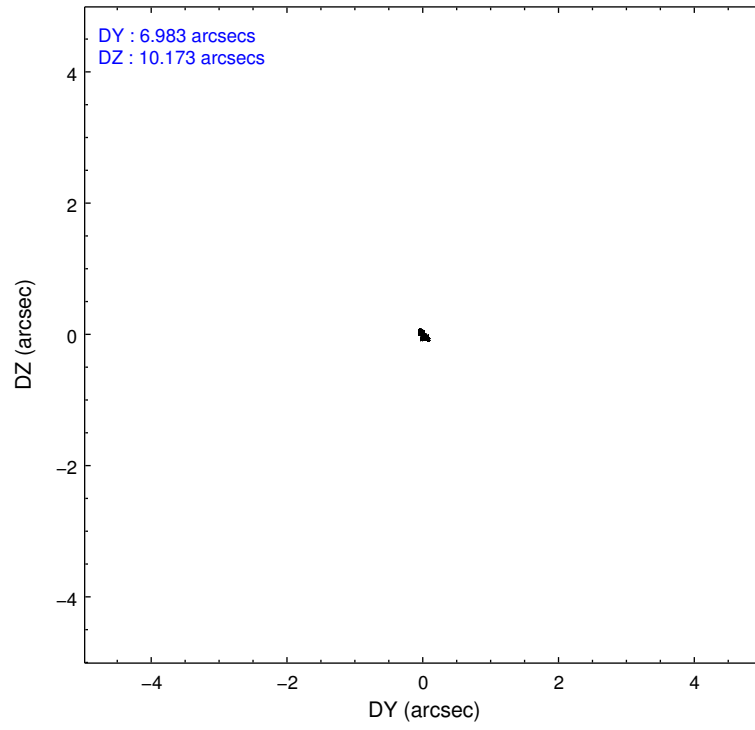
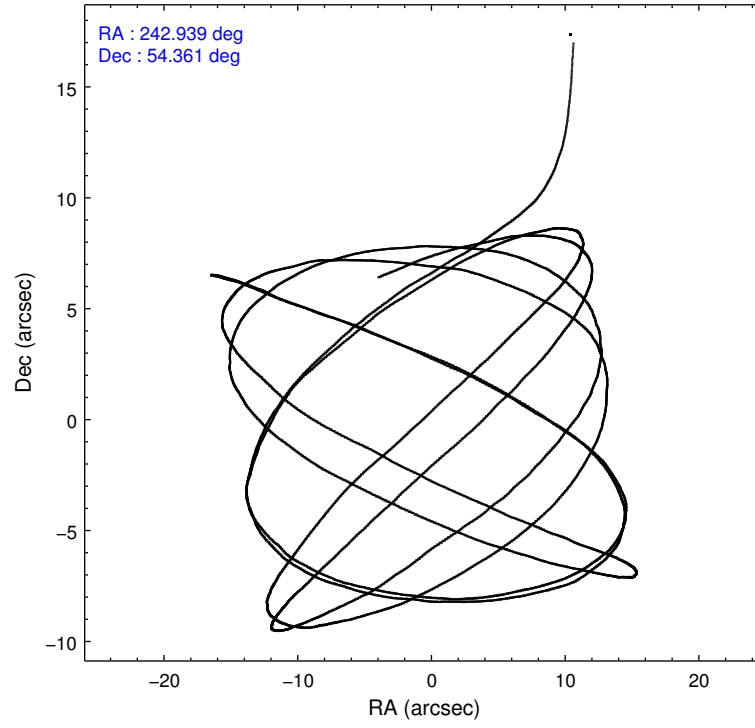
2.1.4 Events

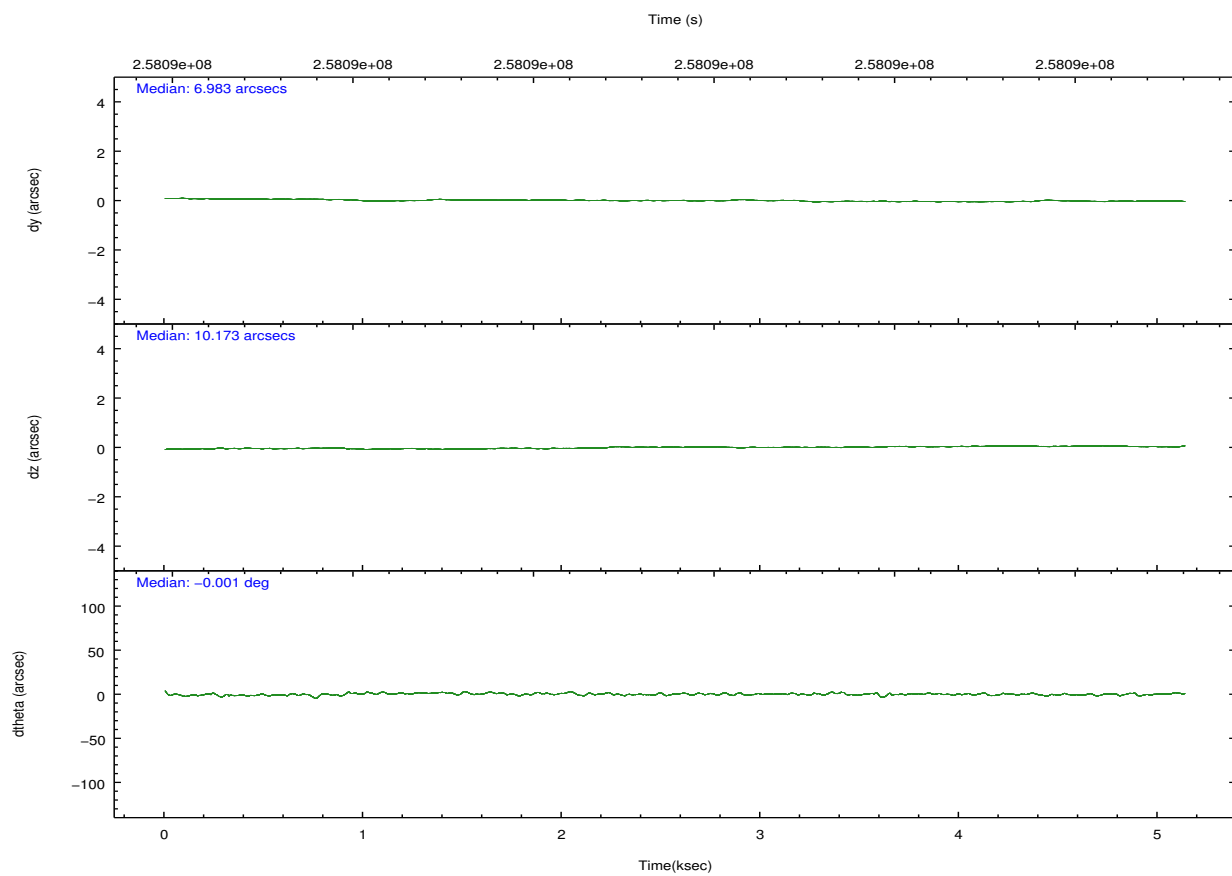
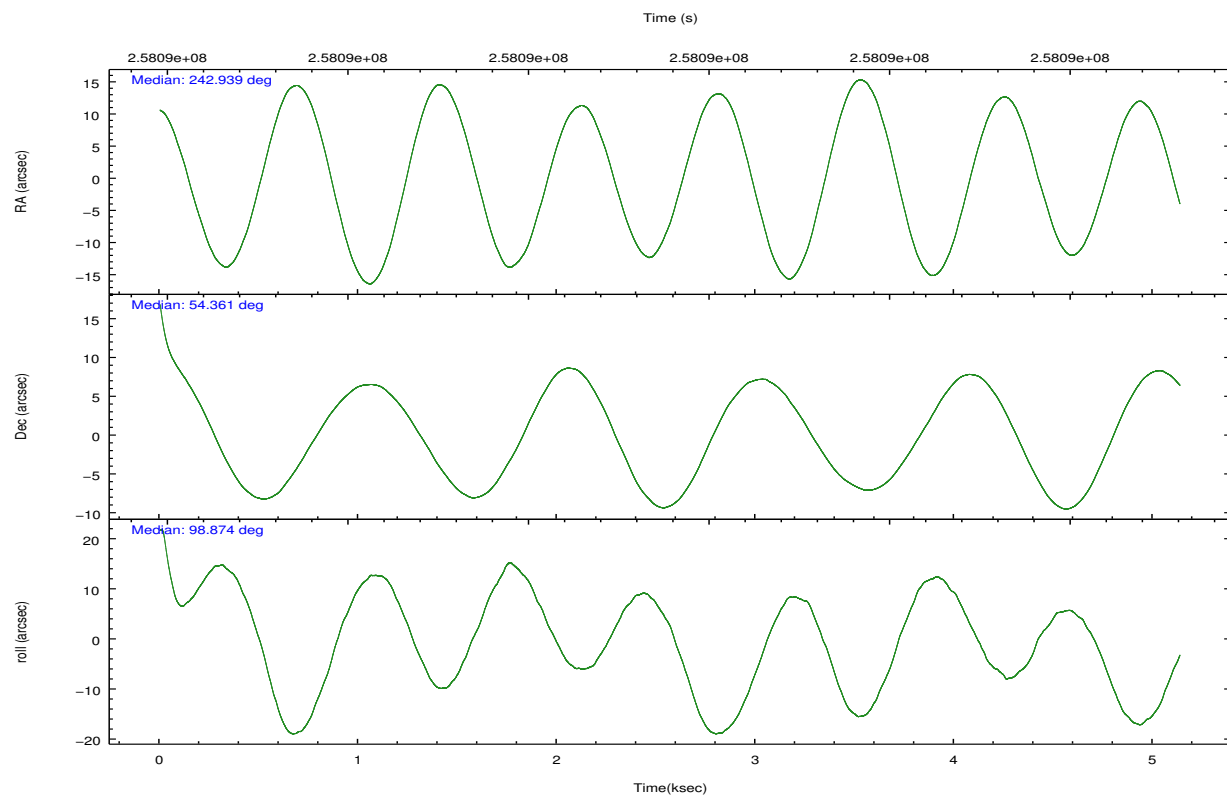
	ccd 0	ccd 1	ccd 2	ccd 3	ccd 6	ccd 7		ccd 0	ccd 1	ccd 2	ccd 3	ccd 6	ccd 7
level 1 events	50867	51325	55626	55082	56539	75305	grade 0 events	2799	2729	2924	3043	2442	2621
rejected events	45613	45708	50328	49592	51511	50425		5%	5%	5%	5%	4%	3%
rejected %	89%	89%	90%	90%	91%	66%	grade 1 events	24	43	35	41	33	99
								0%	0%	0%	0%	0%	0%
							grade 2 events	1432	1501	1272	1289	1279	6193
								2%	2%	2%	2%	2%	8%
							grade 3 events	624	707	612	613	661	2553
								1%	1%	1%	1%	1%	3%
							grade 4 events	579	683	623	641	570	2584
								1%	1%	1%	1%	1%	3%
							grade 5 events	2094	2324	2197	2607	2555	7075
								4%	4%	3%	4%	4%	9%
							grade 6 events	1063	1399	1100	1192	1339	16920
								2%	2%	1%	2%	2%	22%
							grade 7 events	42252	41939	46863	45656	47660	37260
								83%	81%	84%	82%	84%	49%

2.2 Compared Parameters

Parameter	Planned	Actual	Parameter	Planned	Actual
Instrument	ACIS	ACIS	Obspar format version number	7	7
Detector	ACIS-012367	ACIS-012367	Obspar file type	PREDICTED	ACTUAL
Grating	NONE	NONE	Obspar update status	NONE	UPDATED
Data mode	VFAINT	VFAINT	Number of optional ACIS chips dropped	0	0
Observation mode	POINTING	POINTING	On-chip summing requested	N	N
[deg] Pointing RA	242.968650	242.9390402627109	Subarray requested	NONE	NONE
[deg] Pointing Dec	54.339435	54.36078258138379	Alternating exposures requested	N	N
[deg] Pointing Roll	98.649917	98.88273037621491	[s] Primary exposure time	0.000000	3.2
[mm] SIM focus pos	-0.782348	-0.7809083437167272			
[mm] SIM defocus	0	0.001439871863259334			
[mm] SIM translation stage pos	-233.592463	-233.5874344608287			
[mm] SIM translation stage offset	0	-0.005018542100998502			
[s] Observation start time (MET)	258089357.184000	258087680.47707			
Observation start date	2006-03-07T03:28:12	2006-03-07T03:01:20			
[s] Observation end time (MET)	258094357.184000	258095005.12741			
Observation end date	2006-03-07T04:51:32	2006-03-07T05:03:25			
Read mode	TIMED	TIMED			

2.3 Aspect



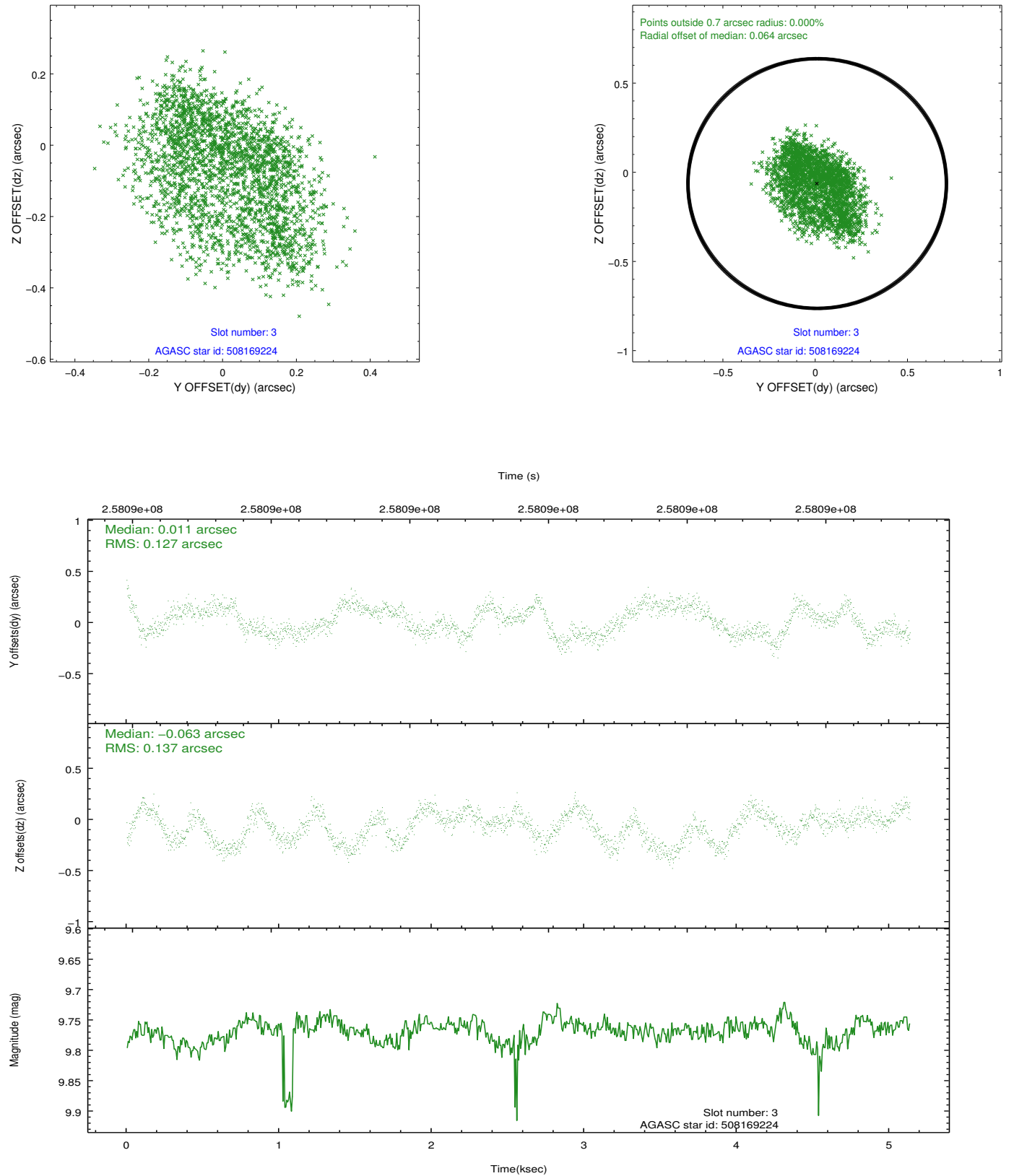


Slot Statistics

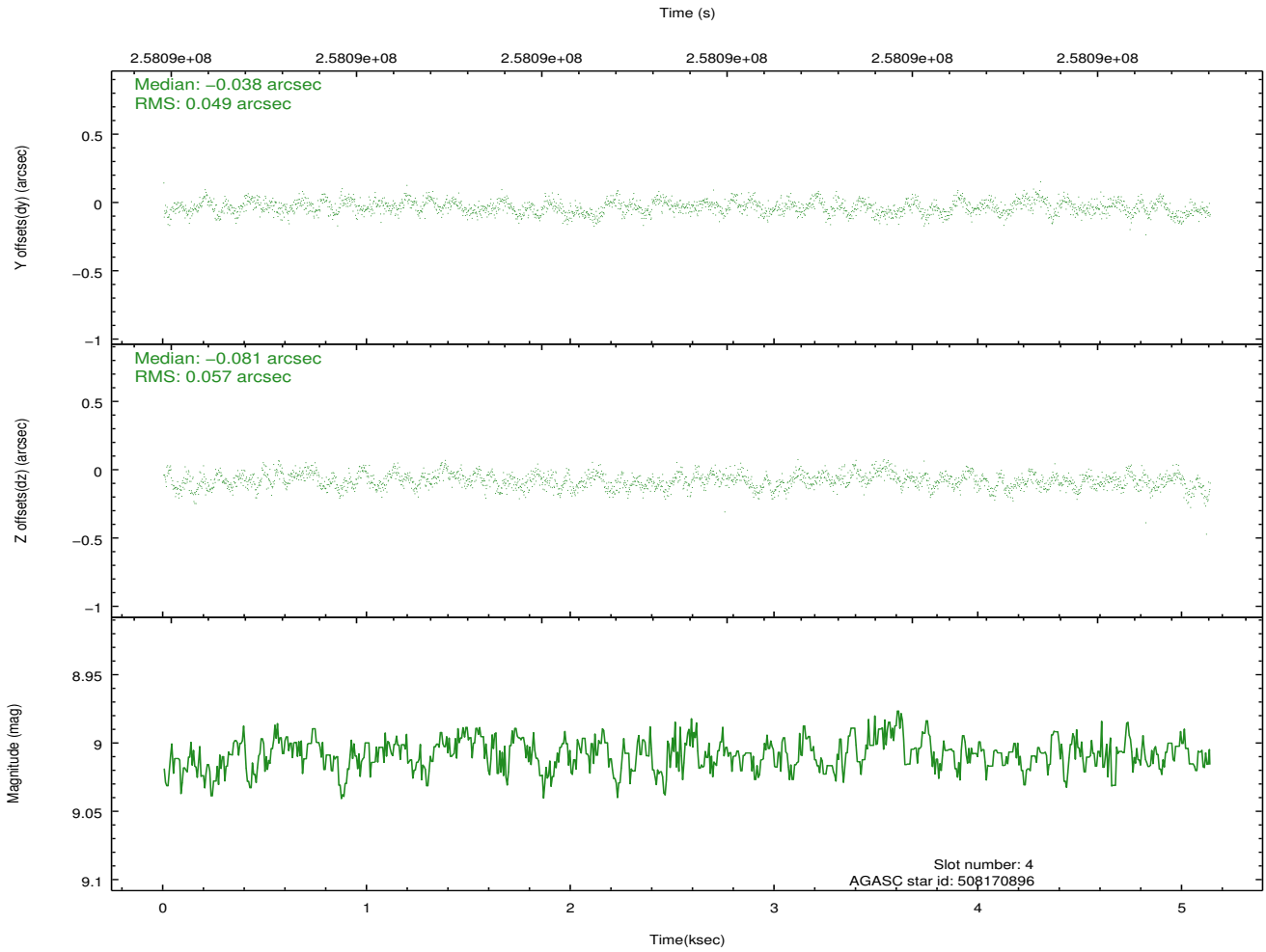
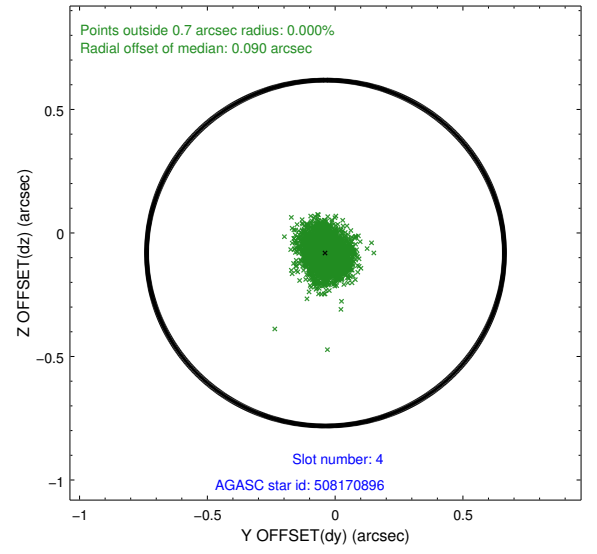
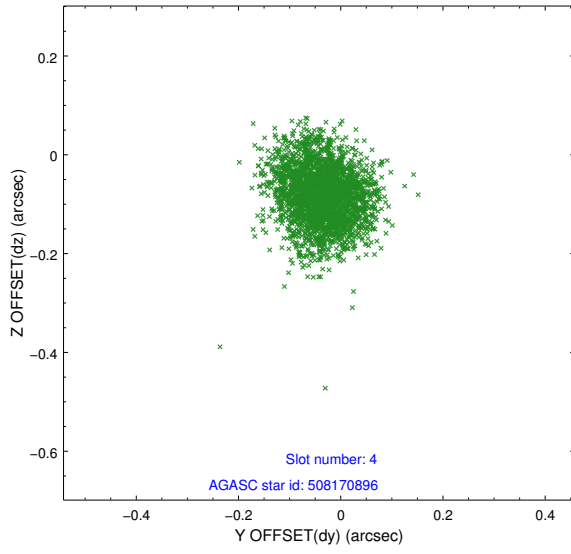
slot	status	id	mag	n_pts	med_dy	med_dz	dr1	dr2	ra	dec	mean_y	mean_z
0	FID	ACIS-I-1	7.25	1253	-0.053	0.049	0.010	0.019	0.000000	0.000000	932.63	-833.60
1	FID	ACIS-I-2	7.15	1253	-0.120	-0.061	0.010	0.017	0.000000	0.000000	-760.87	-840.72
2	FID	ACIS-I-4	7.18	1253	0.074	0.079	0.008	0.016	0.000000	0.000000	2152.14	1065.61
3	GUIDE	508169224	9.77	2494	0.011	-0.063	0.202	0.303	242.580277	53.826359	-1699.89	1093.40
4	GUIDE	508170896	9.01	2503	-0.038	-0.081	0.080	0.125	242.052968	54.527984	970.07	1788.08
5	GUIDE	508172800	7.90	2506	-0.121	-0.078	0.048	0.082	242.573753	54.657892	1259.52	641.45
6	GUIDE	508183040	9.45	2494	0.038	0.060	0.155	0.242	243.957509	54.419234	-12.30	-2092.35
7	GUIDE	508184416	9.45	2505	0.104	0.167	0.090	0.146	244.083277	53.802679	-2247.95	-2055.61

2.4 Star Slots

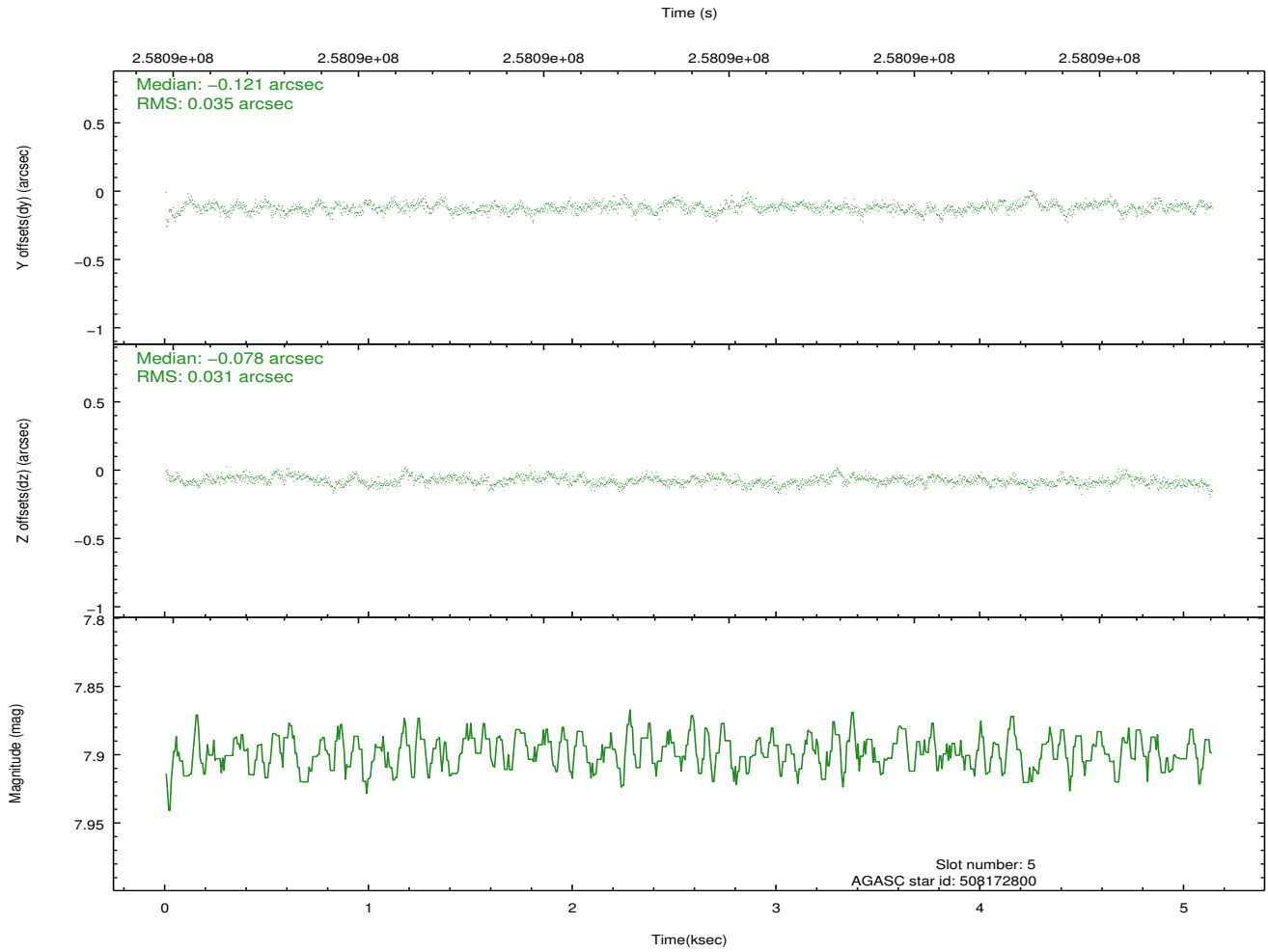
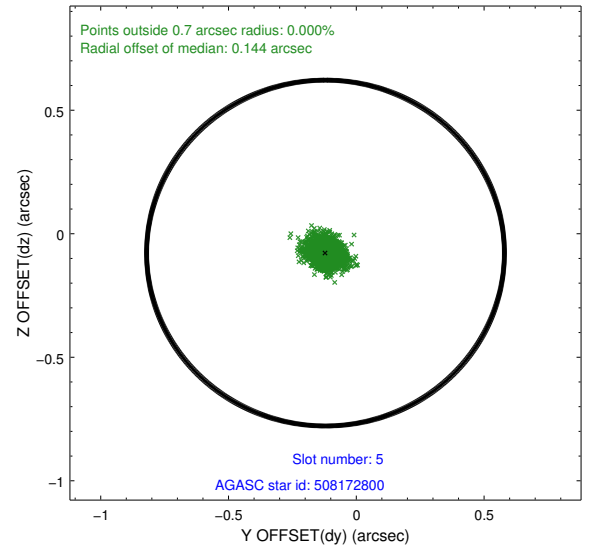
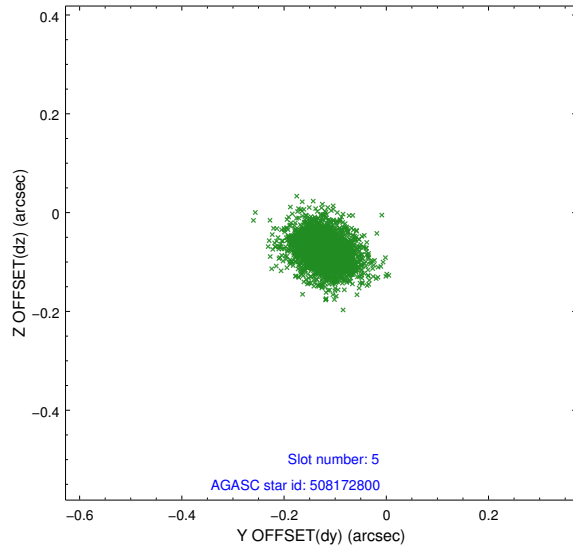
2.4.1 Slot 3



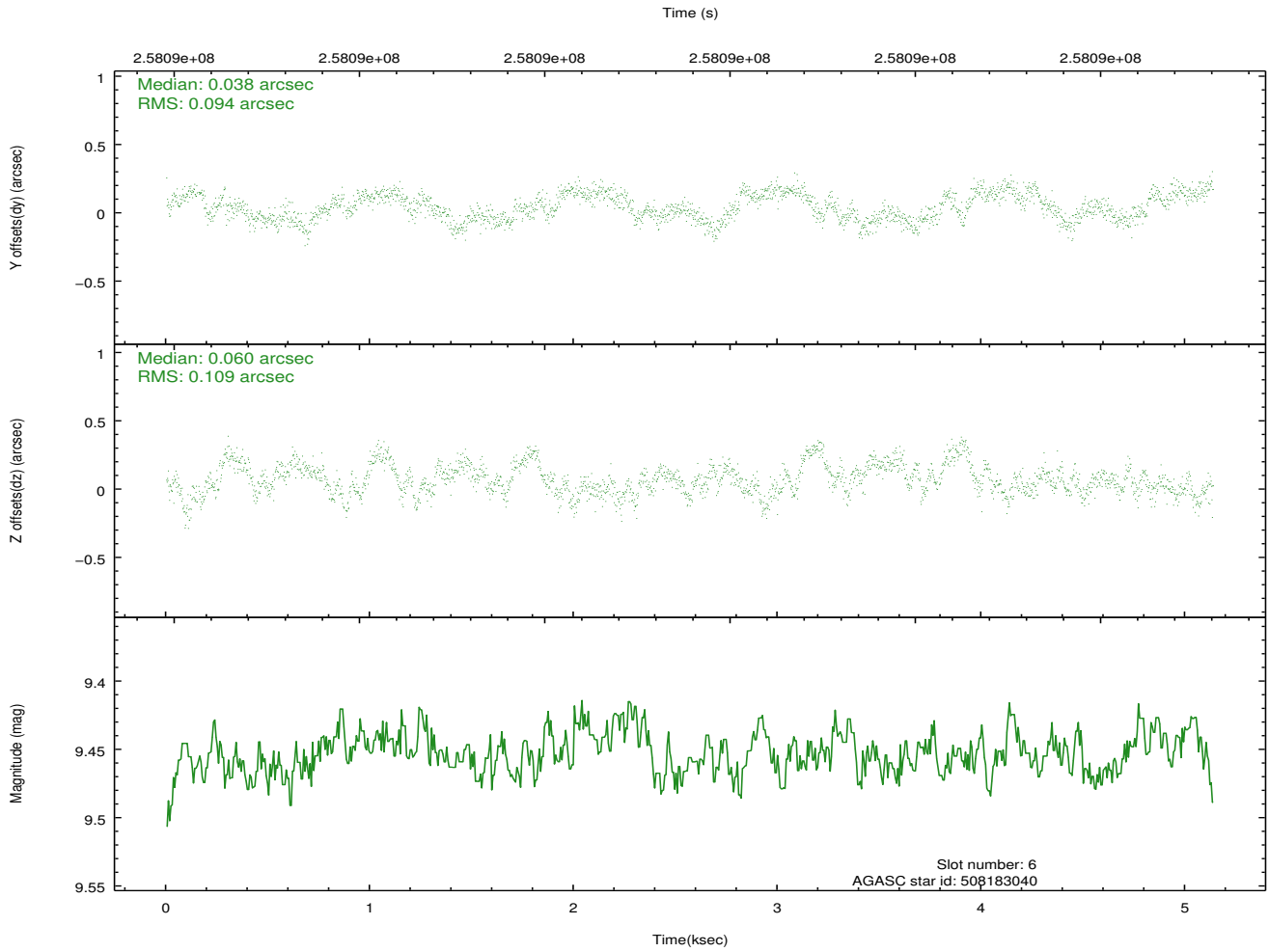
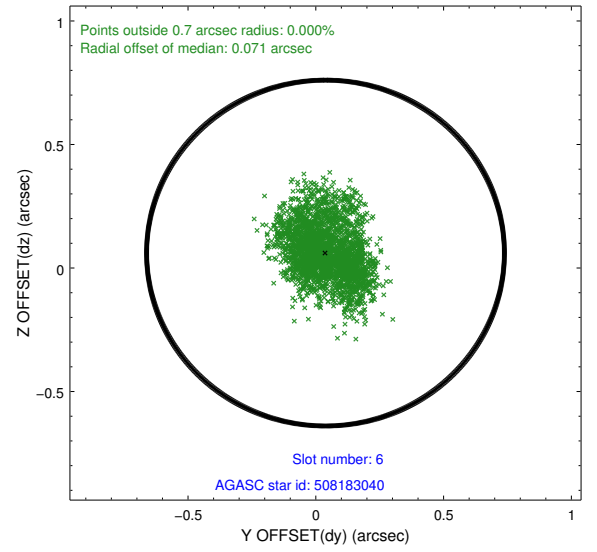
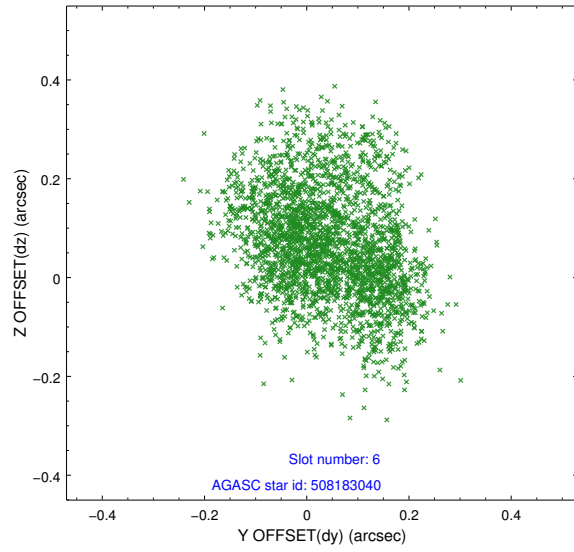
2.4.2 Slot 4



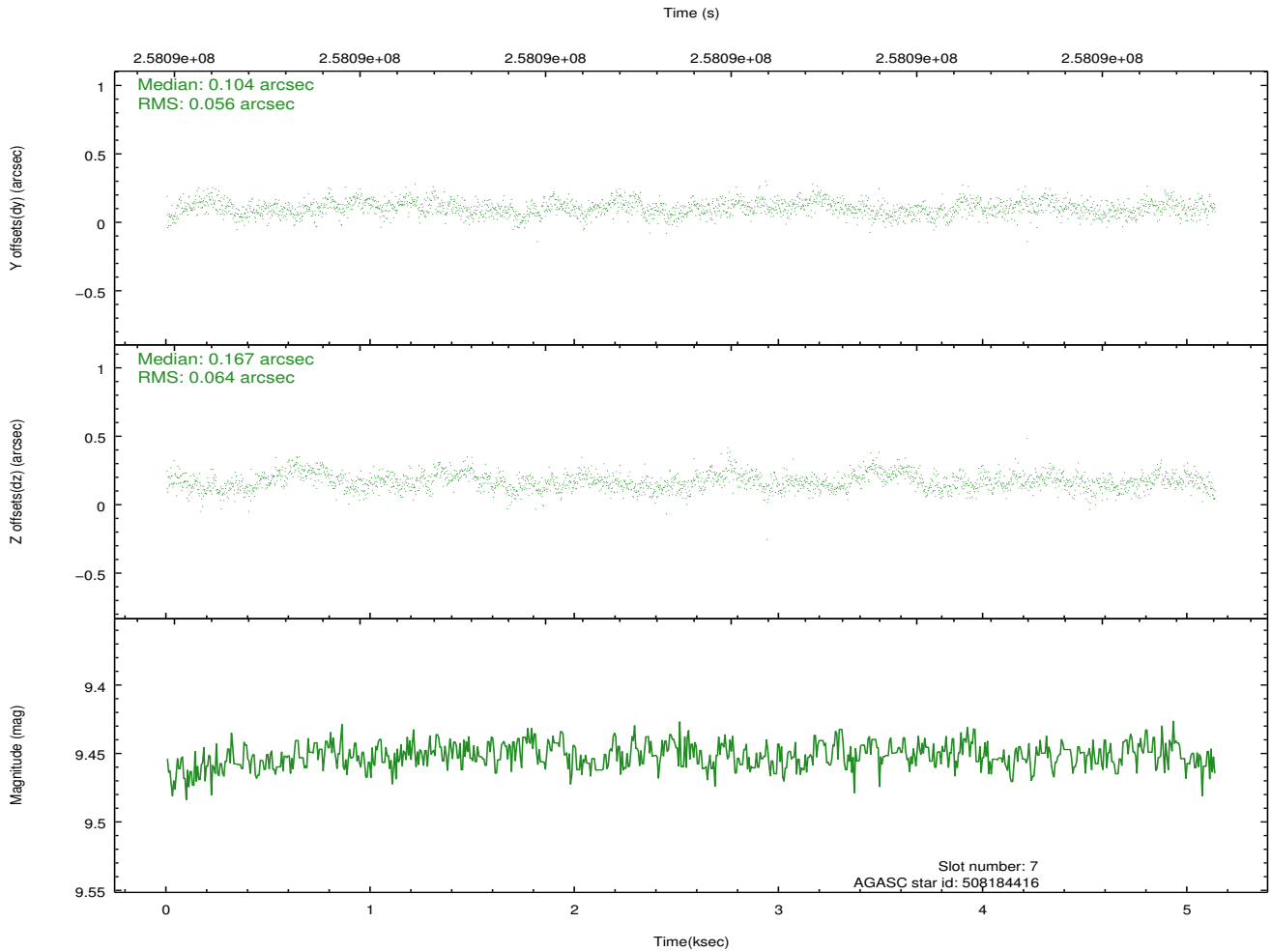
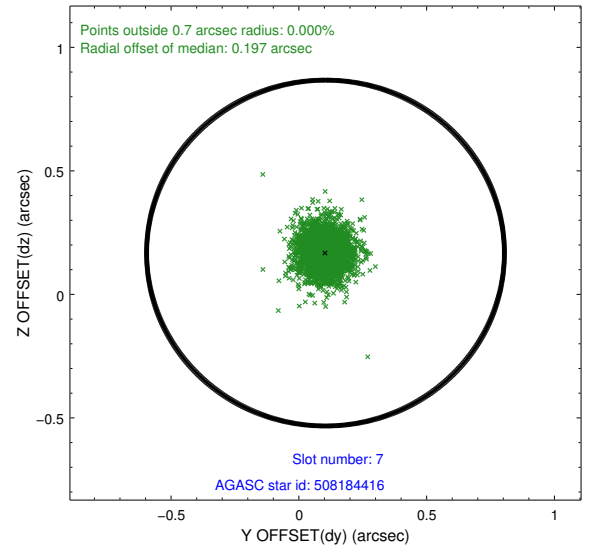
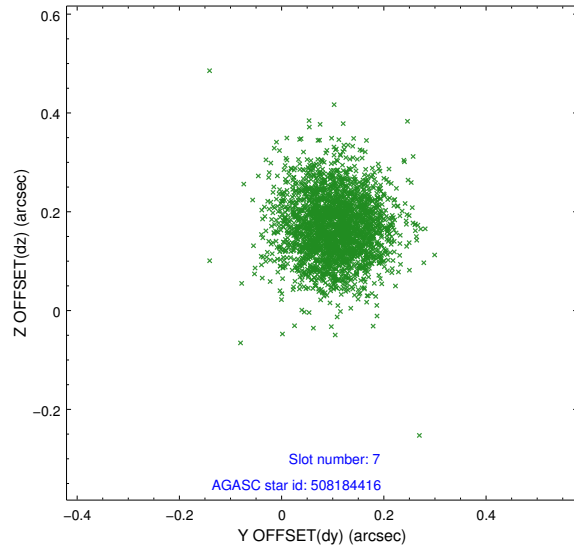
2.4.3 Slot 5



2.4.4 Slot 6

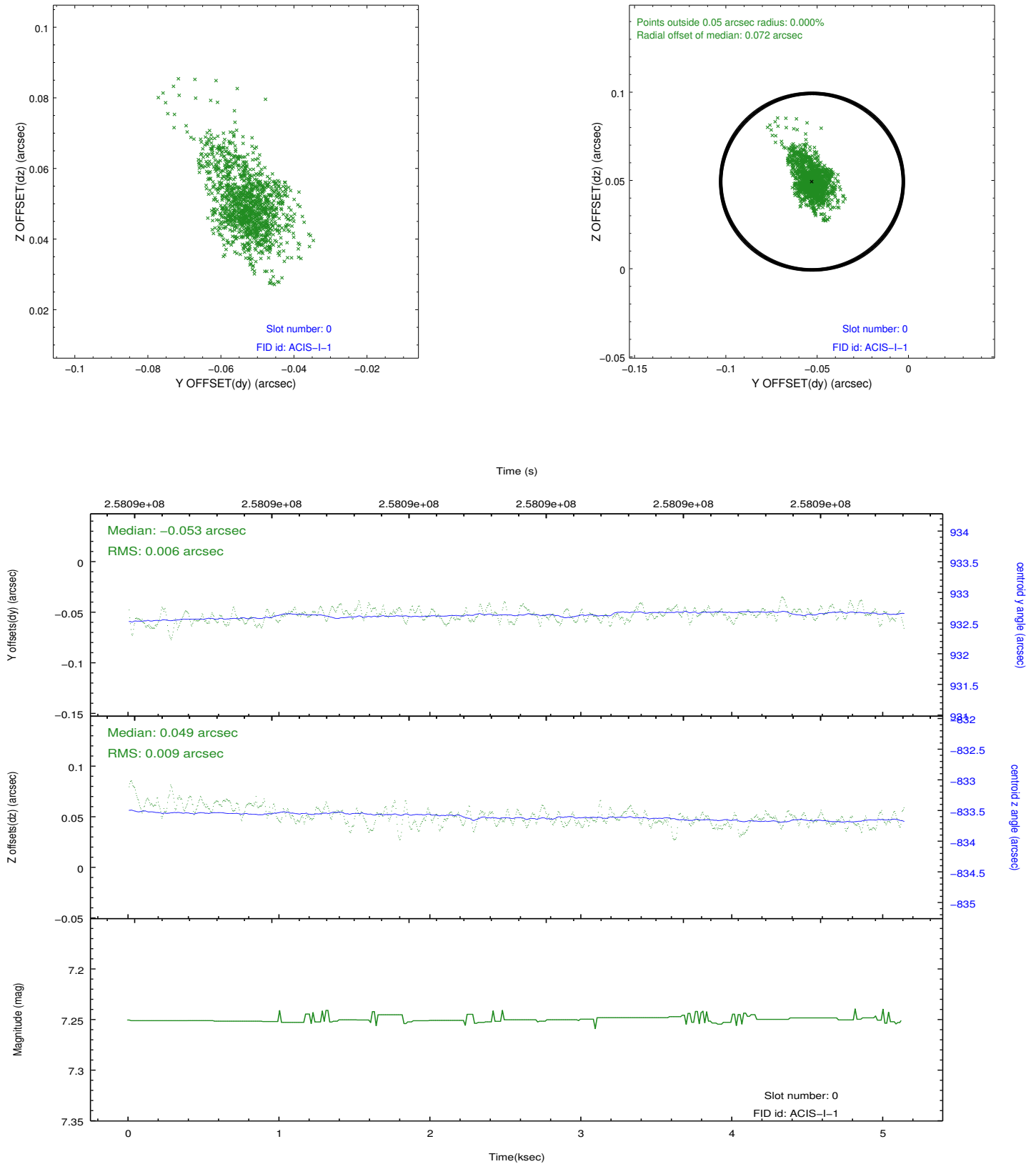


2.4.5 Slot 7

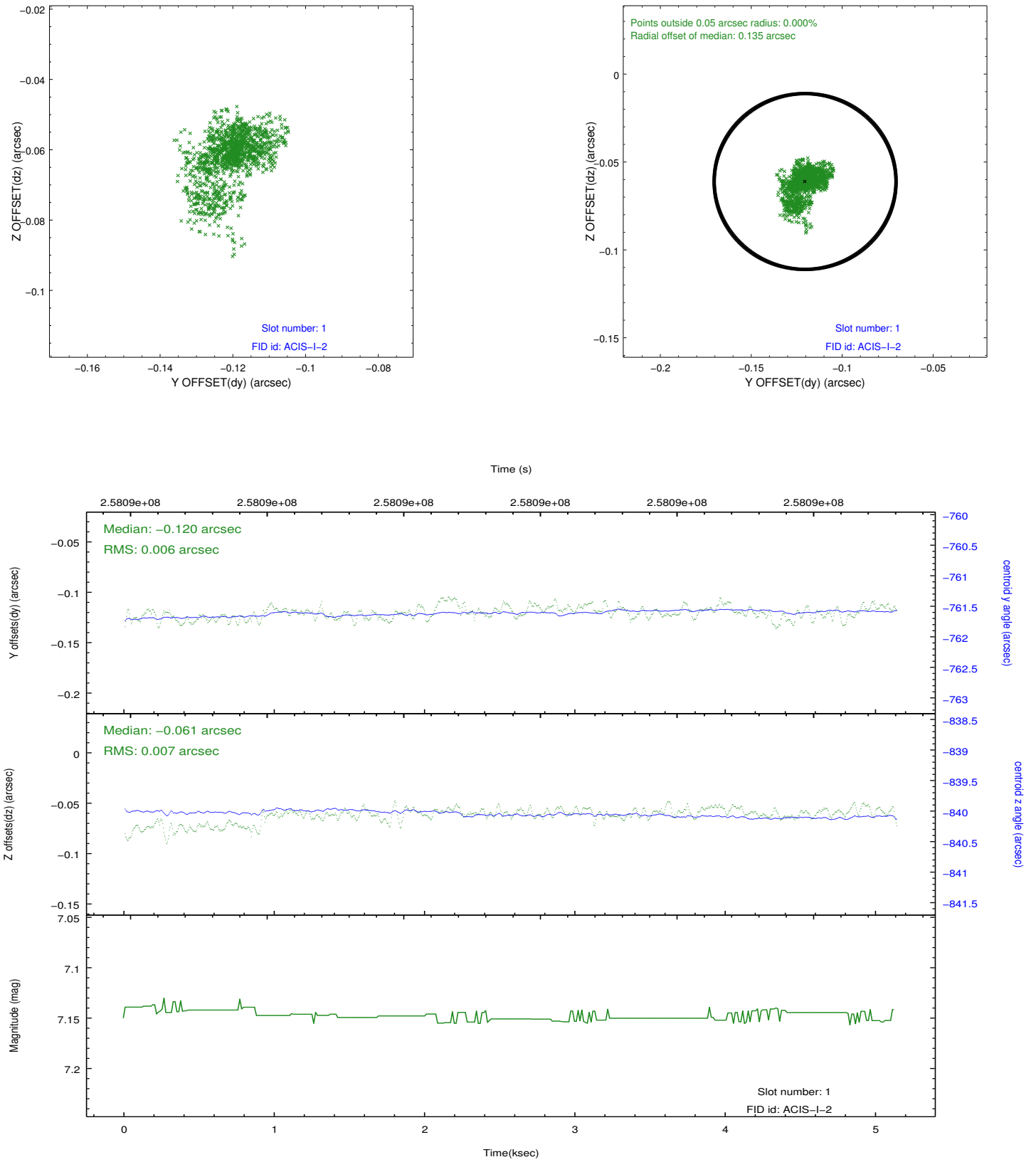


2.5 FID Slots

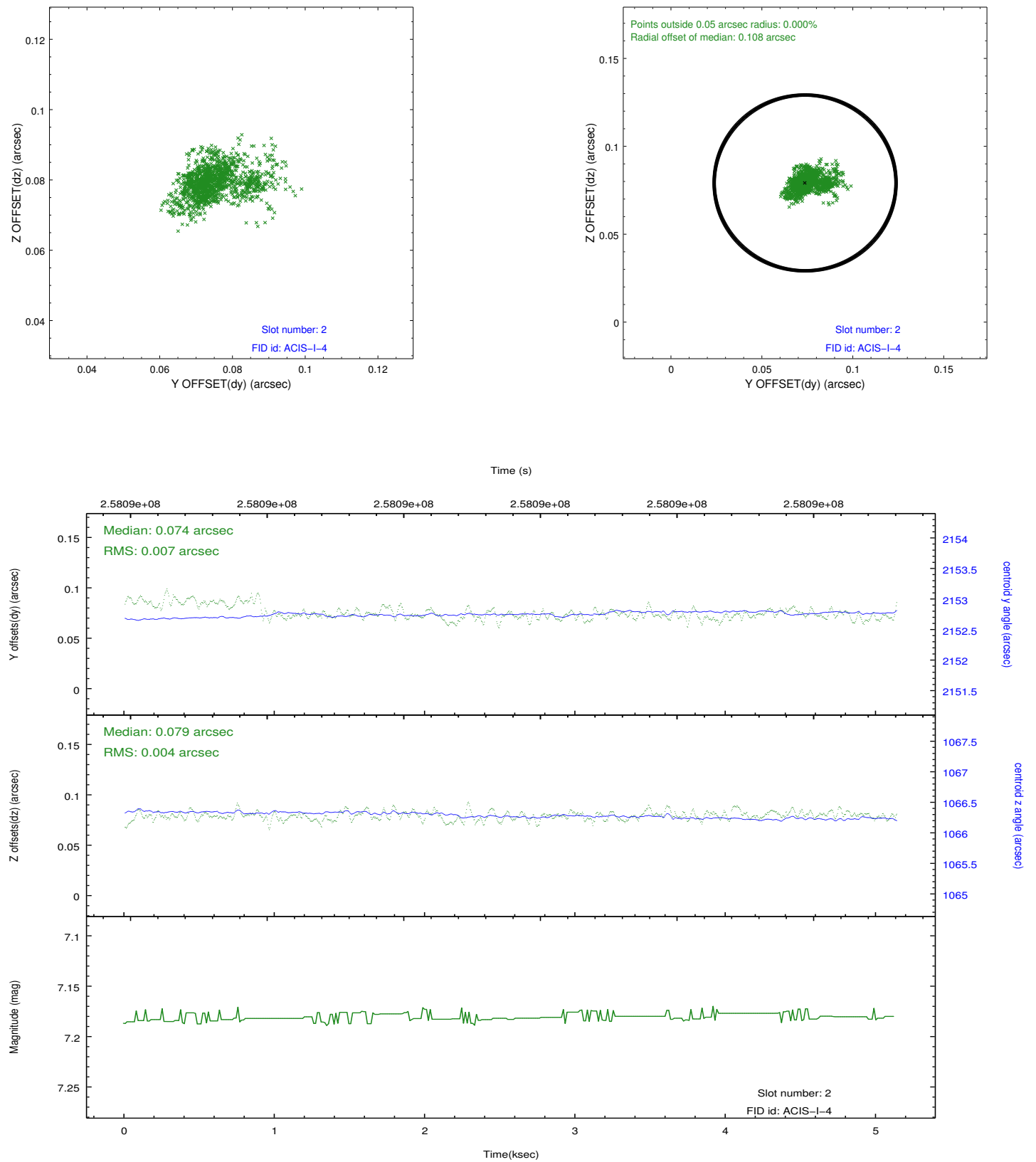
2.5.1 Slot 0



2.5.2 Slot 1



2.5.3 Slot 2



A Summary

A.1 Status

V&V Scientist	Jen Lauer
V&V Date (YYYY-MM-DD)	2012.03.28
V&V Edition	1
V&V Disposition and Status	OK
V&V Charge Time	5.12959998

A.2 Comments

Joint Proposal: NOAO