

V&V Reference Report

L2 ASCDS Version : 8.4.3

Observation 5863 - L2 Version 2
Chandra X-Ray Center

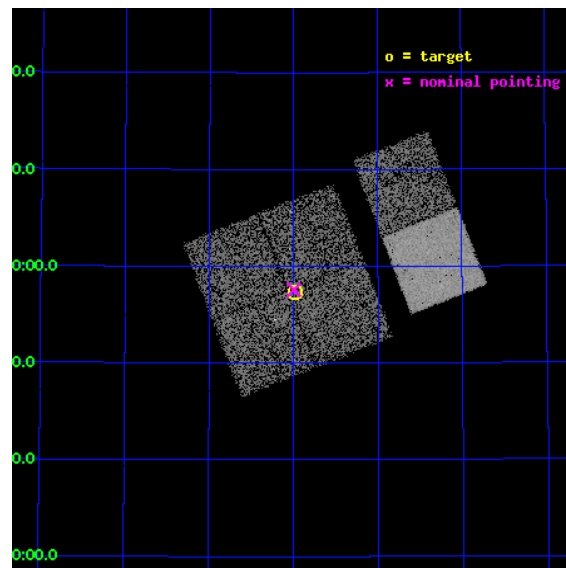
L2 Processing Date : Mar 24 2012

Contents

1	Front	2
2	OBI	3
2.1	OBI	3
2.1.1	Images	3
2.1.2	Bias	3
2.1.3	Parameters	4
2.1.4	Events	4
2.2	Compared Parameters	5
2.3	Aspect	6
2.4	Star Slots	9
2.4.1	Slot 3	9
2.4.2	Slot 4	10
2.4.3	Slot 5	11
2.4.4	Slot 6	12
2.4.5	Slot 7	13
2.5	FID Slots	14
2.5.1	Slot 0	14
2.5.2	Slot 1	15
2.5.3	Slot 2	16
A	Summary	17
A.1	Status	17
A.2	Comments	17

1 Front

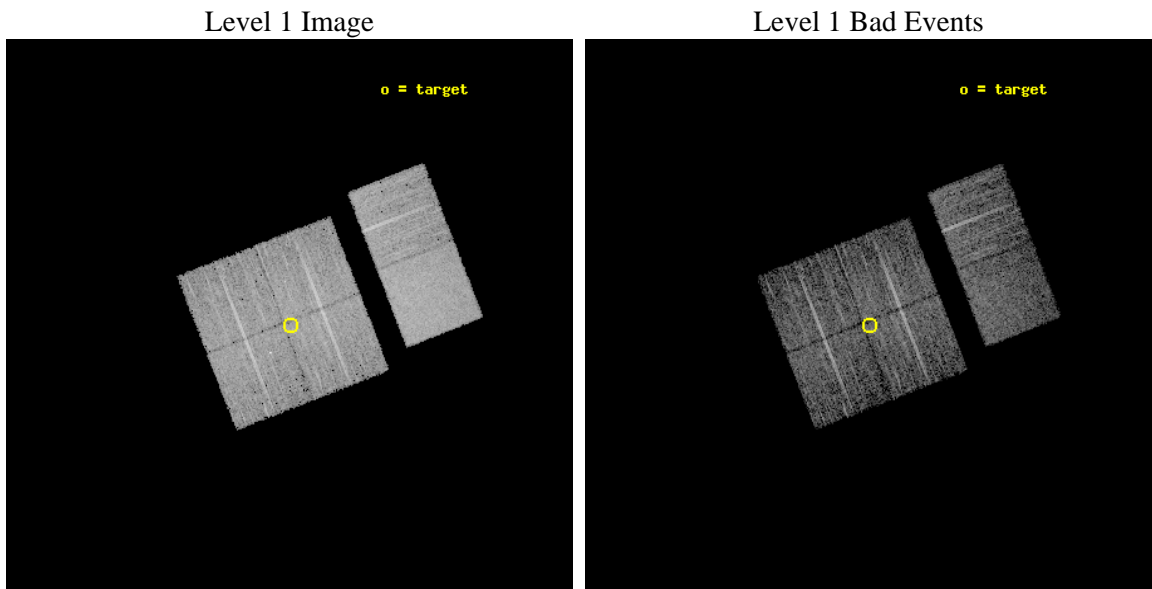
seq_num	900363	Sequence number
obs_id	5863	Observation id
title	The Spectral Energy Distributions of AGN: A Shallow Survey of the ELAIS-N1 Field	Proposal title
observer	Prof Kirpal Nandra	Principal investigator
object	N1_09	Source name
dtcycle	0	
cycle	P	events from which exps? Prim/Second/Both
ra_targ	242.24375	Observer's specified target RA [deg]
dec_targ	53.956194	Observer's specified target Dec [deg]
ra_nom	242.24916717636	Nominal RA [deg]
dec_nom	53.959497360141	Nominal Dec [deg]
roll_nom	68.709746242973	Nominal Roll [deg]
revision	2	Processing version of data
ontime	4950.3589813709	Sum of GTIs [s]
livetime	4887.6745552005	Livetime [s]
ontime0	4953.5999815464	Sum of GTIs [s]
ontime1	4953.5999815464	Sum of GTIs [s]
ontime2	4953.5999815464	Sum of GTIs [s]
ontime3	4950.3589813709	Sum of GTIs [s]
ontime6	4953.5999815464	Sum of GTIs [s]
ontime7	4953.5999815464	Sum of GTIs [s]
l2events	44848	Number of level 2 events



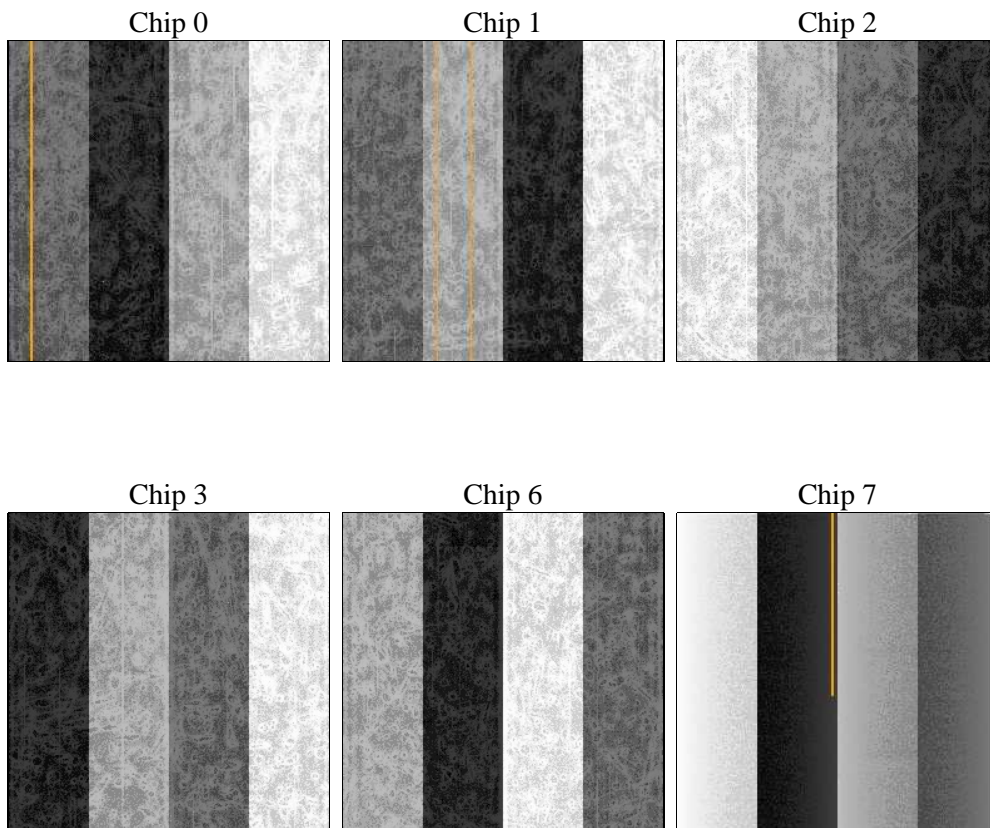
2 OBI

2.1 OBI

2.1.1 Images



2.1.2 Bias



2.1.3 Parameters

obi_num	0	Obi number	sched_exp_time	5000.000000	[s] Scheduled observation exposure time
ascdsver	8.4.3	Processing system revision	ontime	4950.3589813709	Sum of GTIs [s]
caldsver	4.4.8	 	ontime0	4953.5999815464	Sum of GTIs [s]
date	2012-03-24T23:28:01	Date and time of file creation	ontime1	4953.5999815464	Sum of GTIs [s]
revision	2	Processing version of data	ontime2	4953.5999815464	Sum of GTIs [s]
			ontime3	4950.3589813709	Sum of GTIs [s]
			ontime6	4953.5999815464	Sum of GTIs [s]
			ontime7	4953.5999815464	Sum of GTIs [s]
			l1events	261100	Number of level 1 events

2.1.4 Events

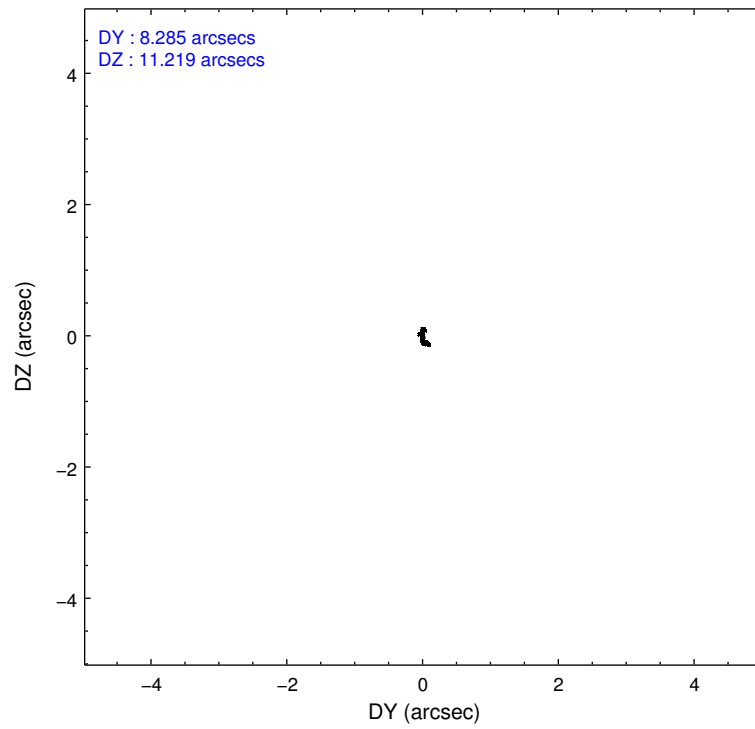
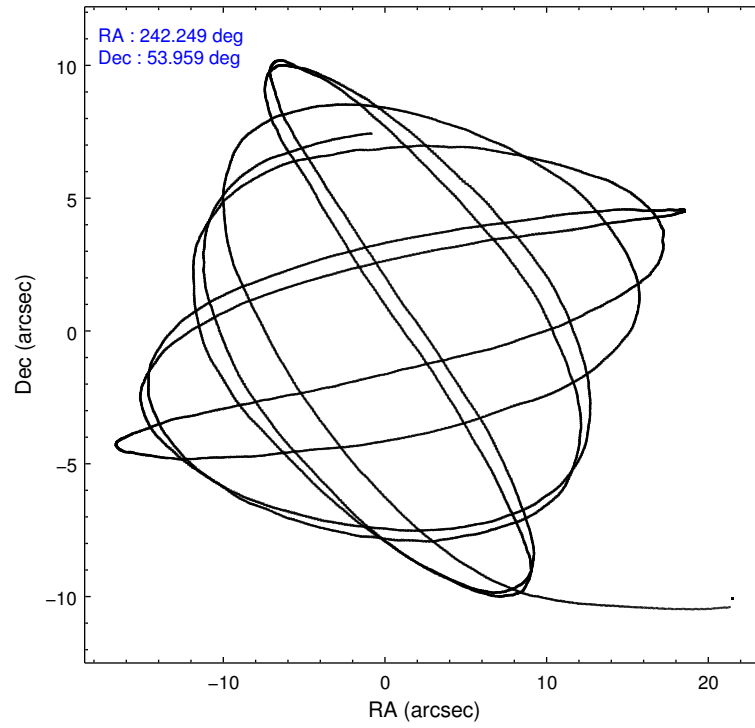
	ccd 0	ccd 1	ccd 2	ccd 3	ccd 6	ccd 7		ccd 0	ccd 1	ccd 2	ccd 3	ccd 6	ccd 7
level 1 events	39011	38336	42119	41211	43691	56732	grade 0 events	2196	2374	2255	2041	1951	2091
rejected events	33944	32709	37171	36472	38672	33270		5%	6%	5%	4%	4%	3%
rejected %	87%	85%	88%	88%	88%	58%	grade 1 events	26	25	26	26	23	56
								0%	0%	0%	0%	0%	0%
							grade 2 events	1038	1292	958	952	1133	4768
								2%	3%	2%	2%	2%	8%
							grade 3 events	446	494	474	446	514	2058
								1%	1%	1%	1%	1%	3%
							grade 4 events	470	494	460	440	452	1986
								1%	1%	1%	1%	1%	3%
							grade 5 events	1654	1877	1598	1970	1909	5350
								4%	4%	3%	4%	4%	9%
							grade 6 events	920	975	803	863	970	12575
								2%	2%	1%	2%	2%	22%
							grade 7 events	32261	30805	35545	34473	36739	27848
								82%	80%	84%	83%	84%	49%

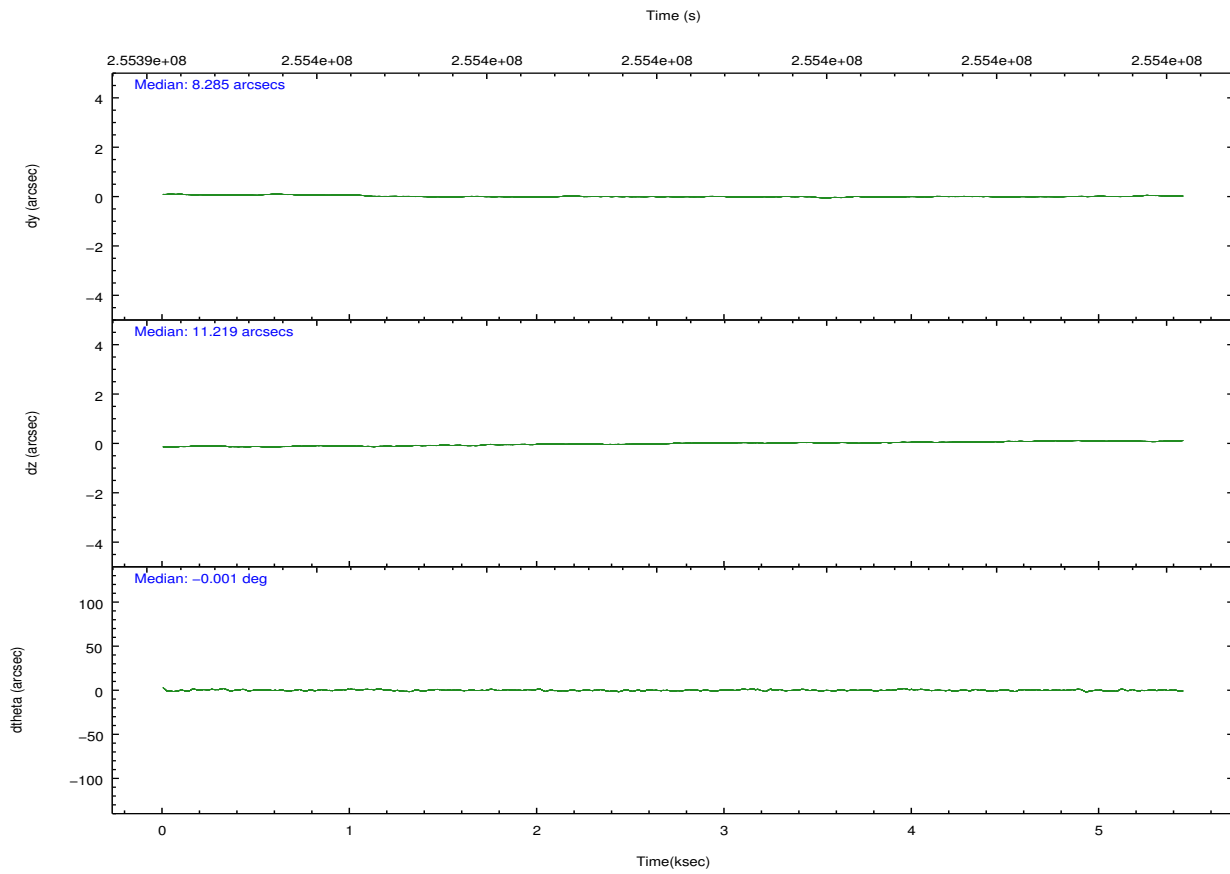
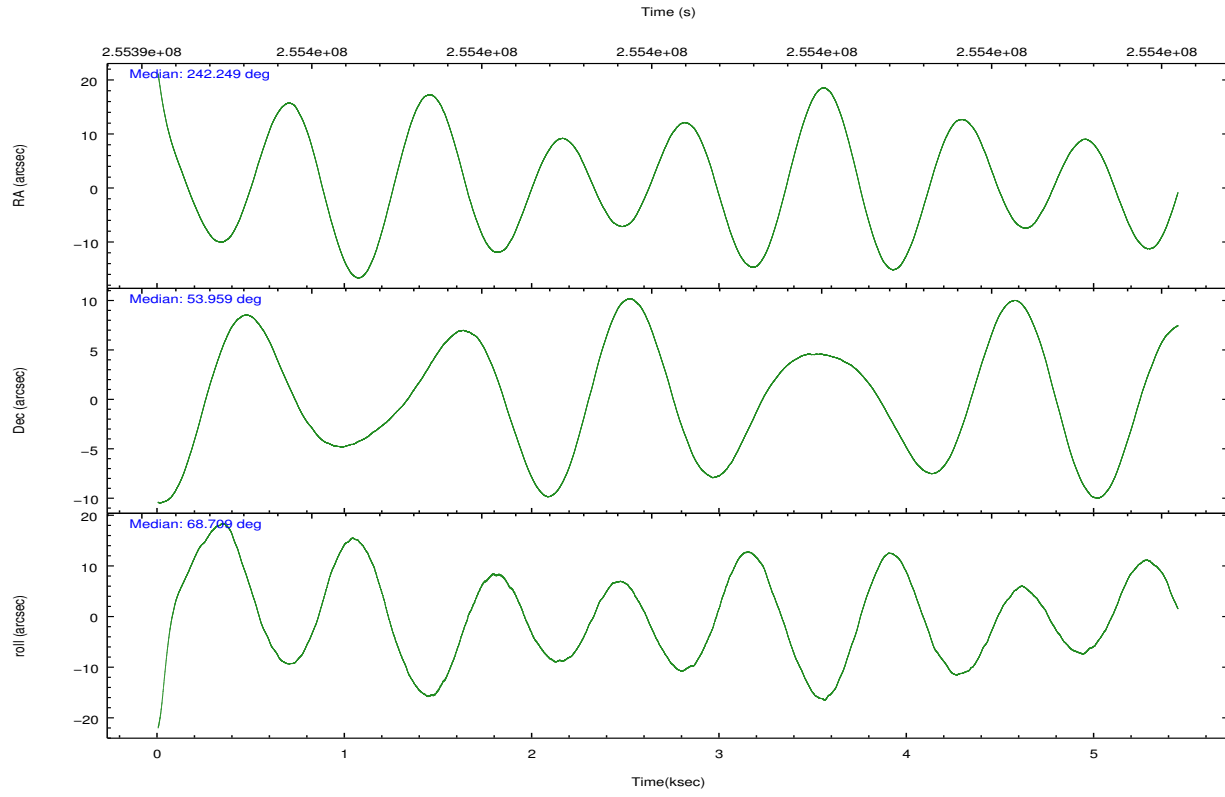
2.2 Compared Parameters

Parameter	Planned	Actual
Instrument	ACIS	ACIS
Detector	ACIS-012367	ACIS-012367
Grating	NONE	NONE
Data mode	VFAINT	VFAINT
Observation mode	POINTING	POINTING
[deg] Pointing RA	242.256483	242.2491671763627
[deg] Pointing Dec	53.932458	53.95949736014068
[deg] Pointing Roll	68.495180	68.70974624297301
[mm] SIM focus pos	-0.782348	-0.7809083437167272
[mm] SIM defocus	0	0.001439871863259334
[mm] SIM translation stage pos	-233.592463	-233.5874344608287
[mm] SIM translation stage offset	0	-0.005018542100998502
[s] Observation start time (MET)	255394819.184000	255393670.8019
Observation start date	2006-02-03T22:59:14	2006-02-03T22:41:10
[s] Observation end time (MET)	255399819.184000	255399953.0272
Observation end date	2006-02-04T00:22:34	2006-02-04T00:25:53
Read mode	TIMED	TIMED

Parameter	Planned	Actual
Obspar format version number	7	7
Obspar file type	PREDICTED	ACTUAL
Obspar update status	NONE	UPDATED
Number of optional ACIS chips dropped	0	0
On-chip summing requested	N	N
Subarray requested	NONE	NONE
Alternating exposures requested	N	N
[s] Primary exposure time	0.000000	3.2

2.3 Aspect



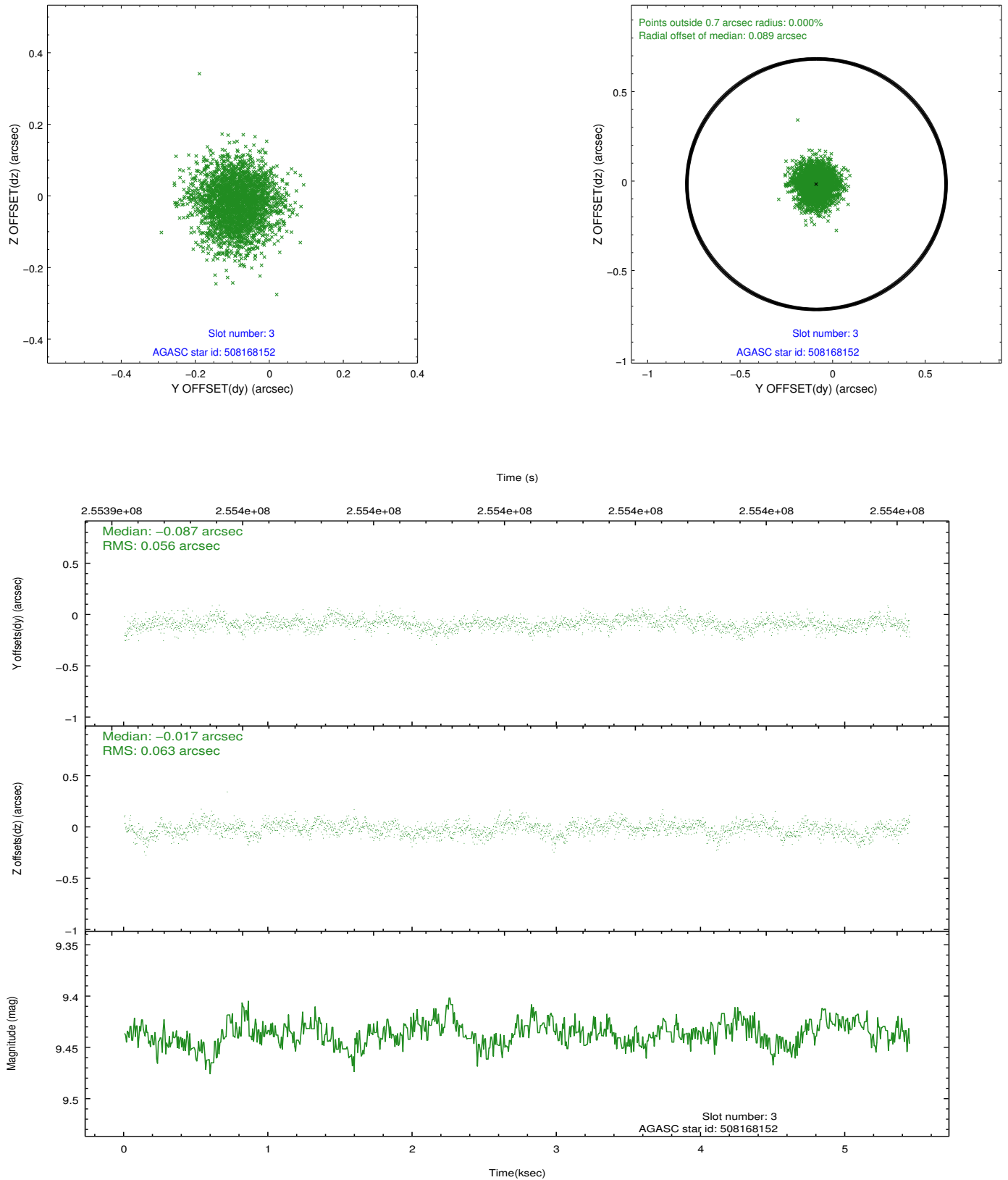


Slot Statistics

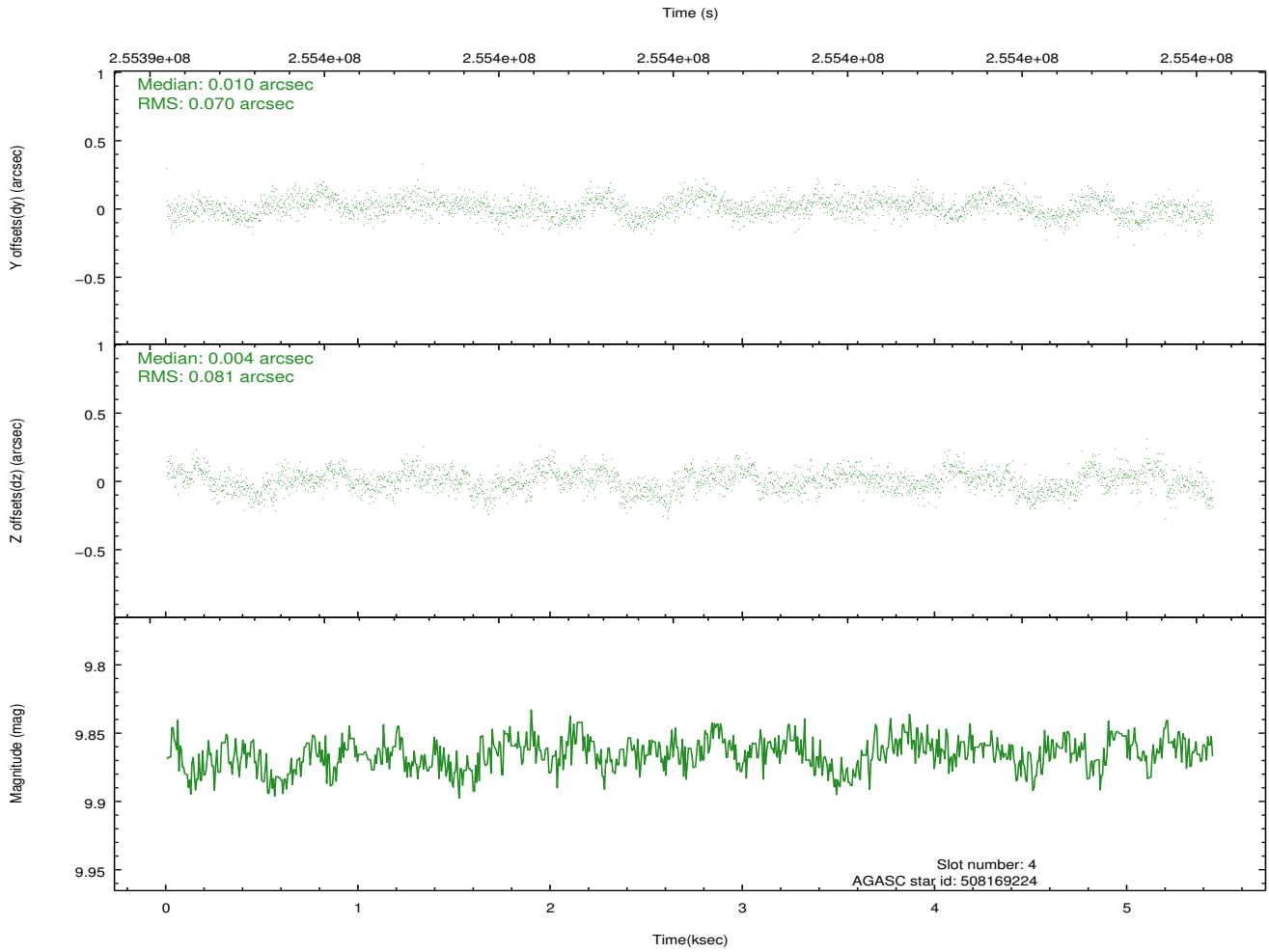
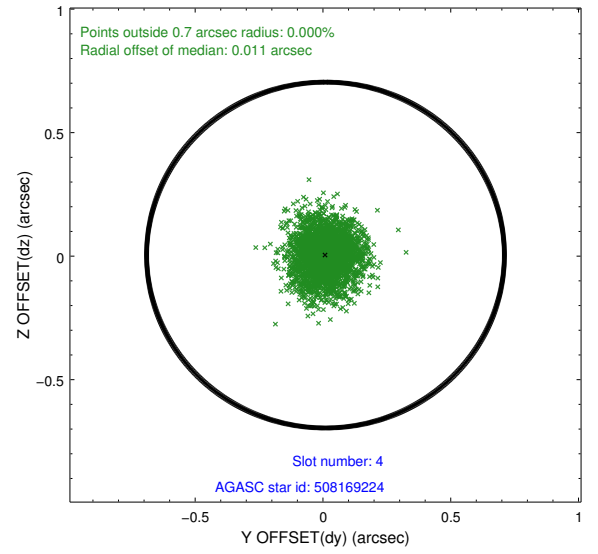
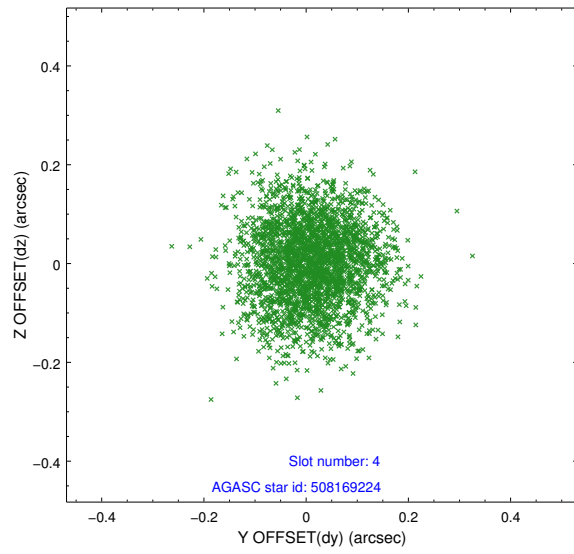
slot	status	id	mag	n_pts	med_dy	med_dz	dr1	dr2	ra	dec	mean_y	mean_z
0	FID	ACIS-I-1	7.25	1328	-0.006	-0.055	0.011	0.022	0.000000	0.000000	931.33	-834.77
1	FID	ACIS-I-4	7.18	1328	0.156	0.065	0.009	0.017	0.000000	0.000000	2152.18	1064.58
2	FID	ACIS-I-5	7.22	1328	-0.249	0.061	0.008	0.013	0.000000	0.000000	-1815.46	1063.75
3	GUIDE	508168152	9.44	2654	-0.087	-0.017	0.088	0.145	241.888534	54.357327	1141.92	1279.43
4	GUIDE	508169224	9.87	2653	0.010	0.004	0.114	0.184	242.580277	53.826359	-100.86	-779.18
5	GUIDE	508170896	9.00	2656	-0.131	-0.073	0.069	0.117	242.052968	54.527984	1839.56	1181.31
6	GUIDE	508181792	8.45	2655	0.080	-0.071	0.054	0.088	241.580704	53.515038	-1921.23	797.17
7	GUIDE	508173256	9.49	2653	0.129	0.156	0.083	0.139	242.416178	53.212147	-2285.82	-1269.91

2.4 Star Slots

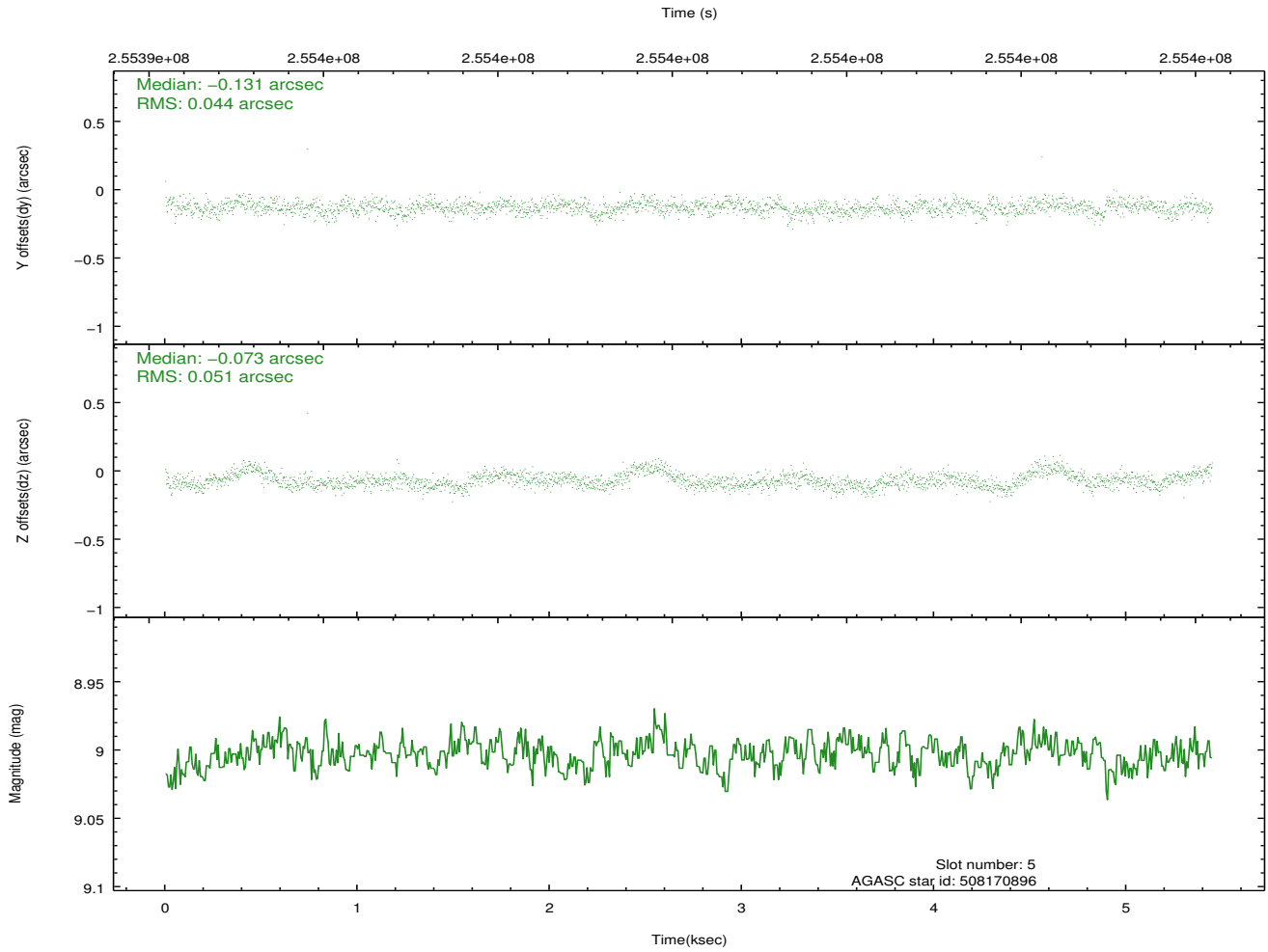
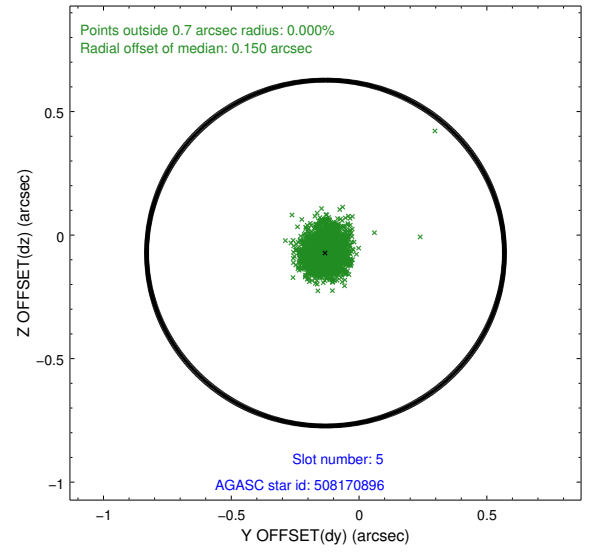
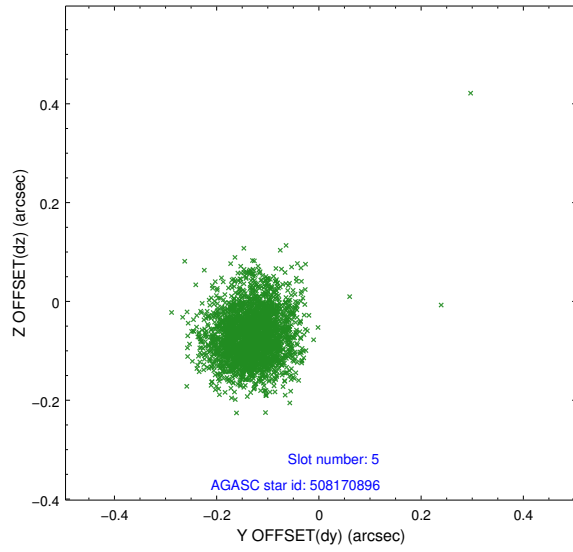
2.4.1 Slot 3



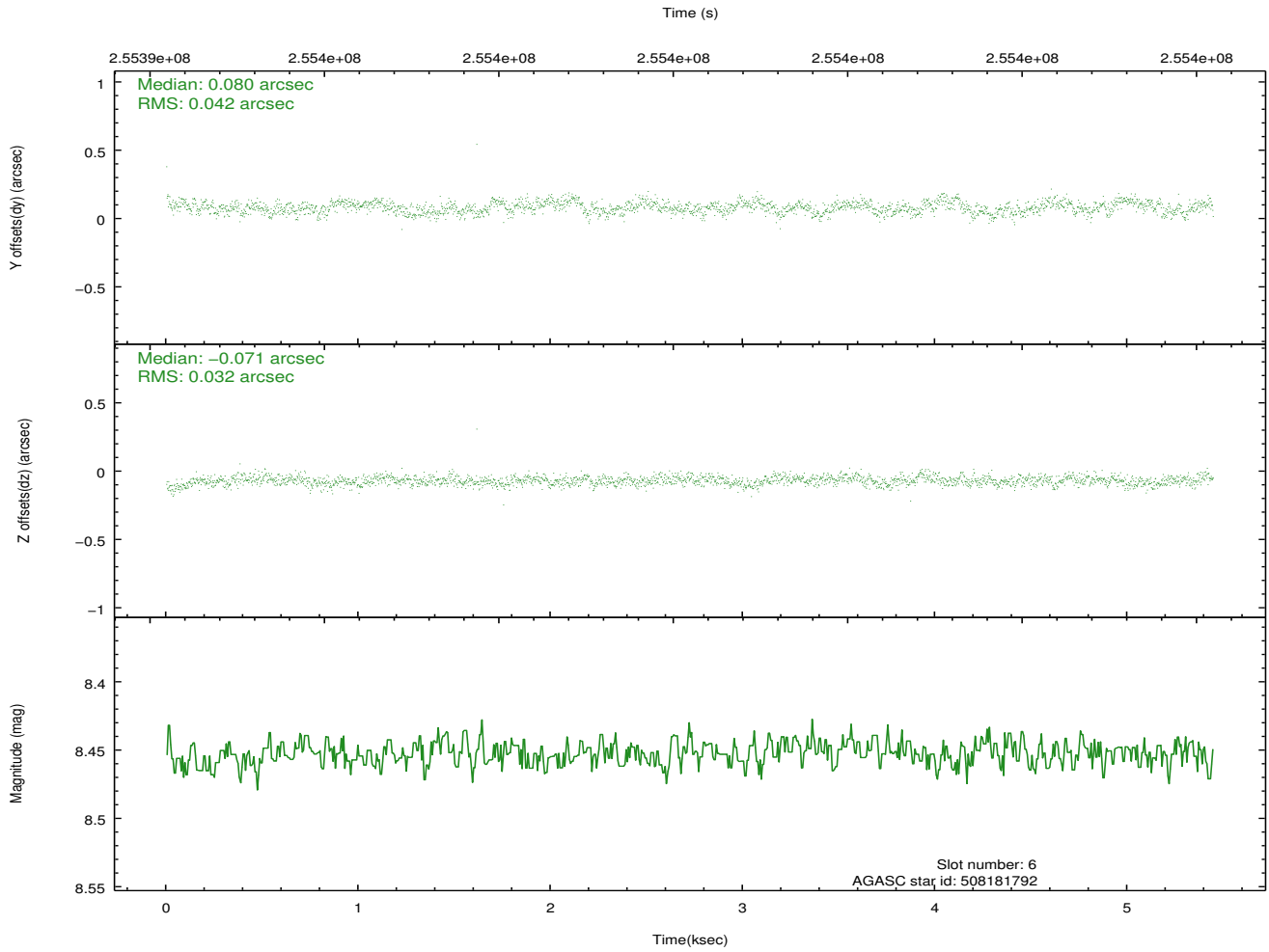
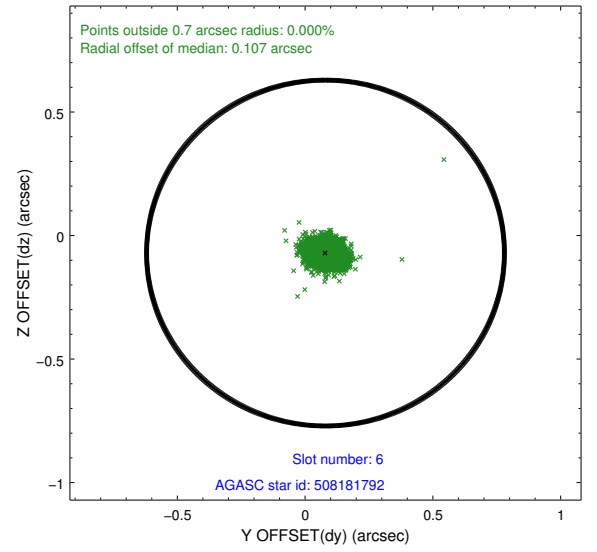
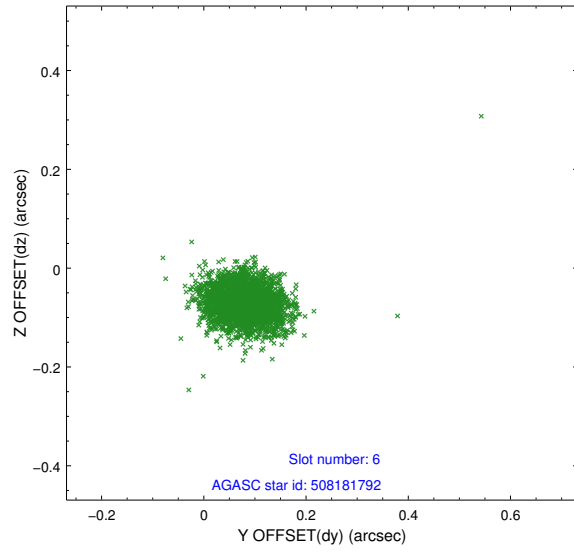
2.4.2 Slot 4



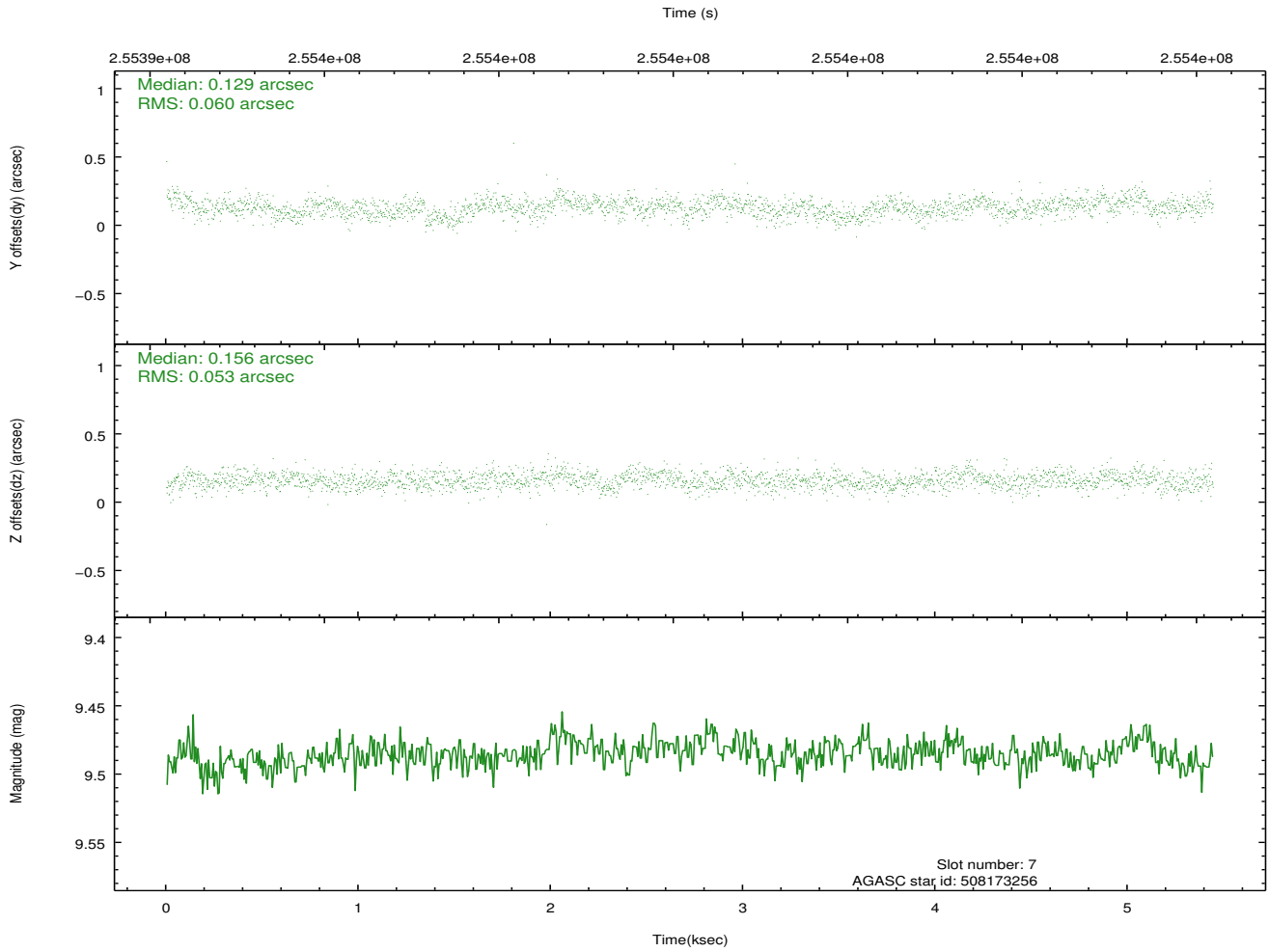
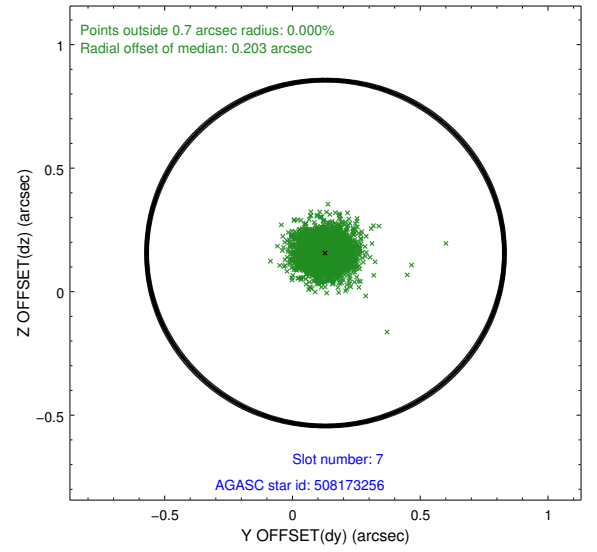
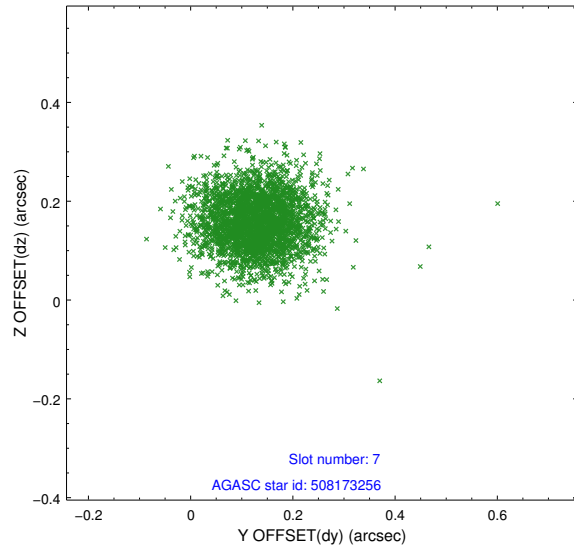
2.4.3 Slot 5



2.4.4 Slot 6

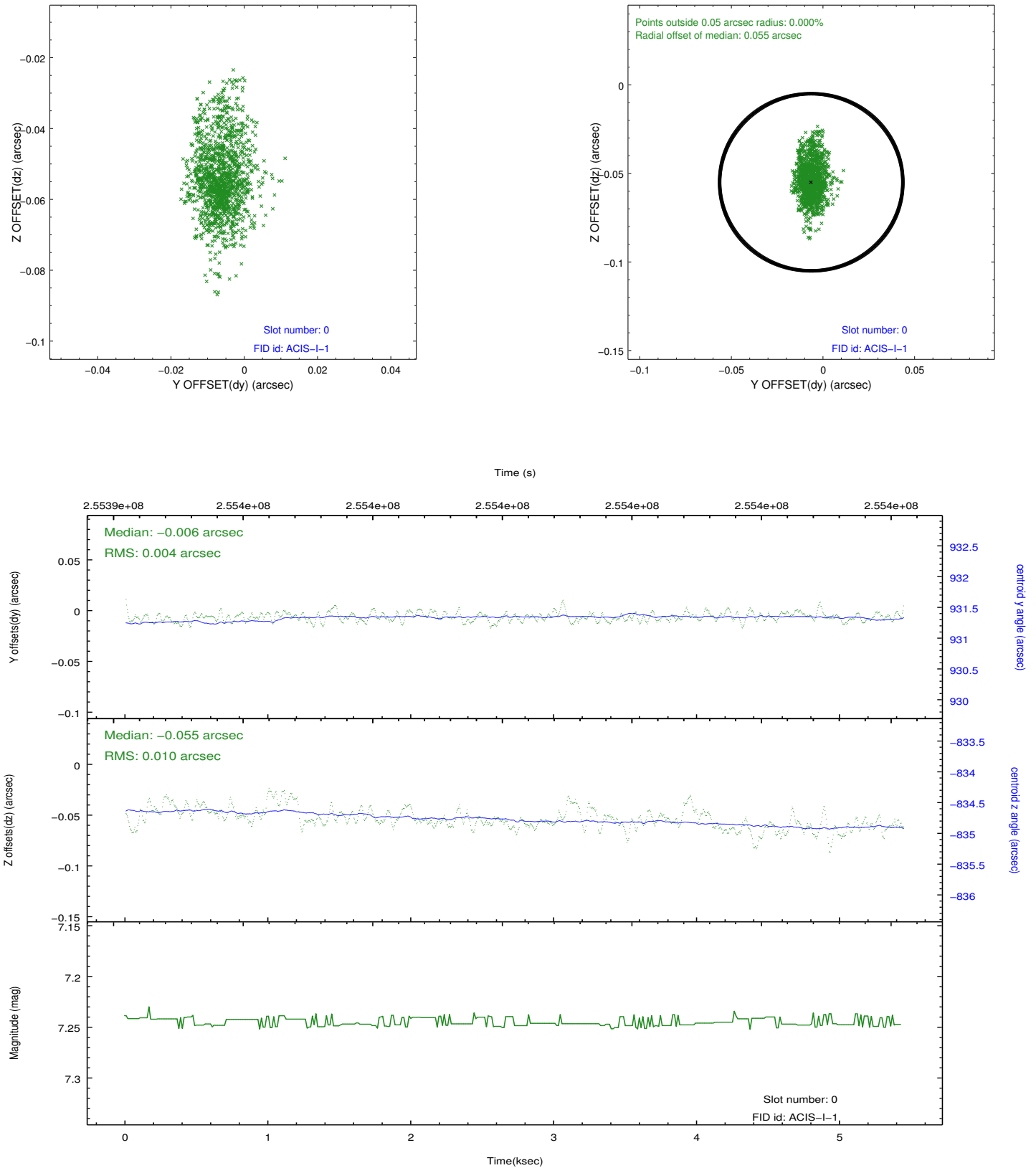


2.4.5 Slot 7

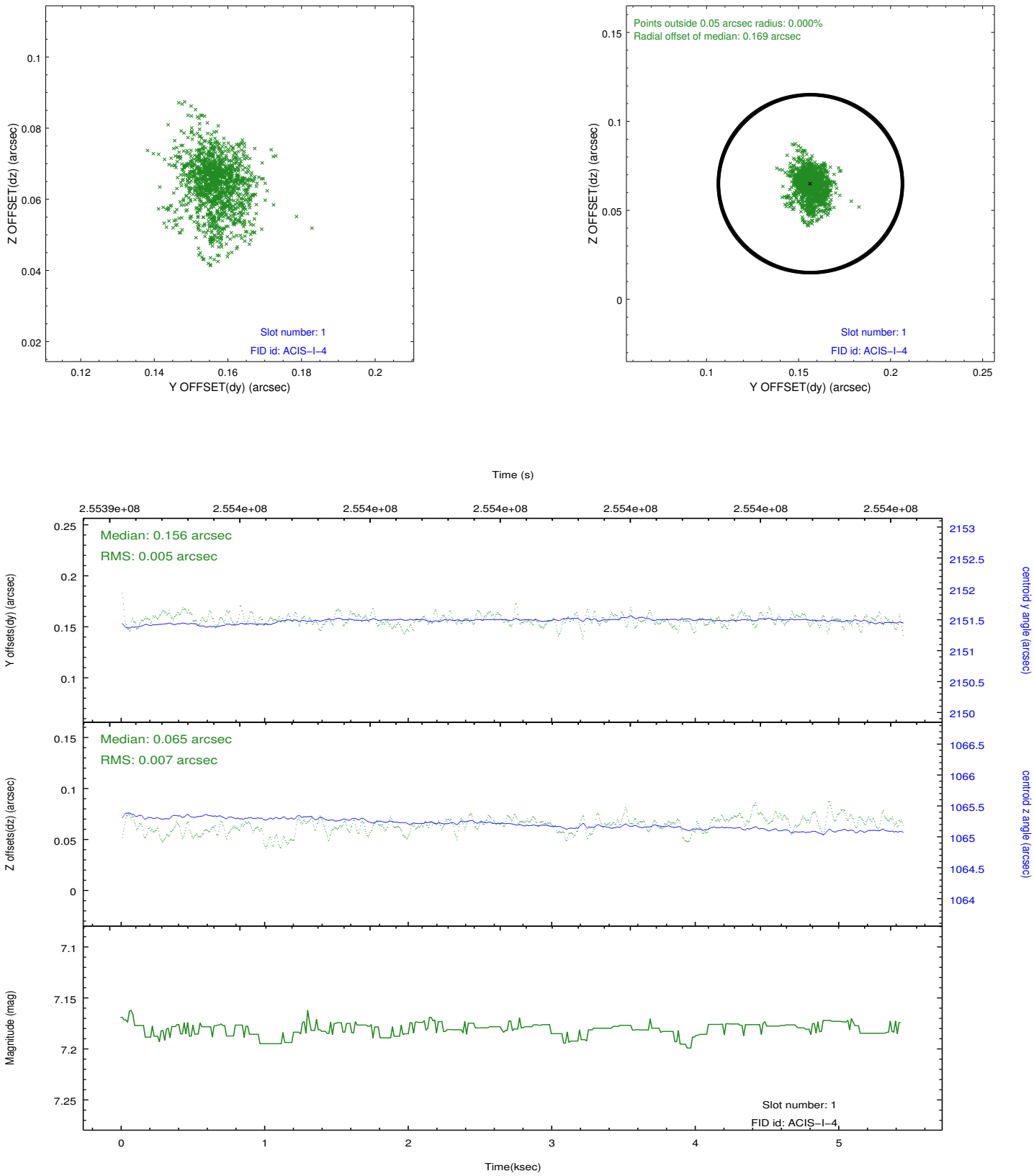


2.5 FID Slots

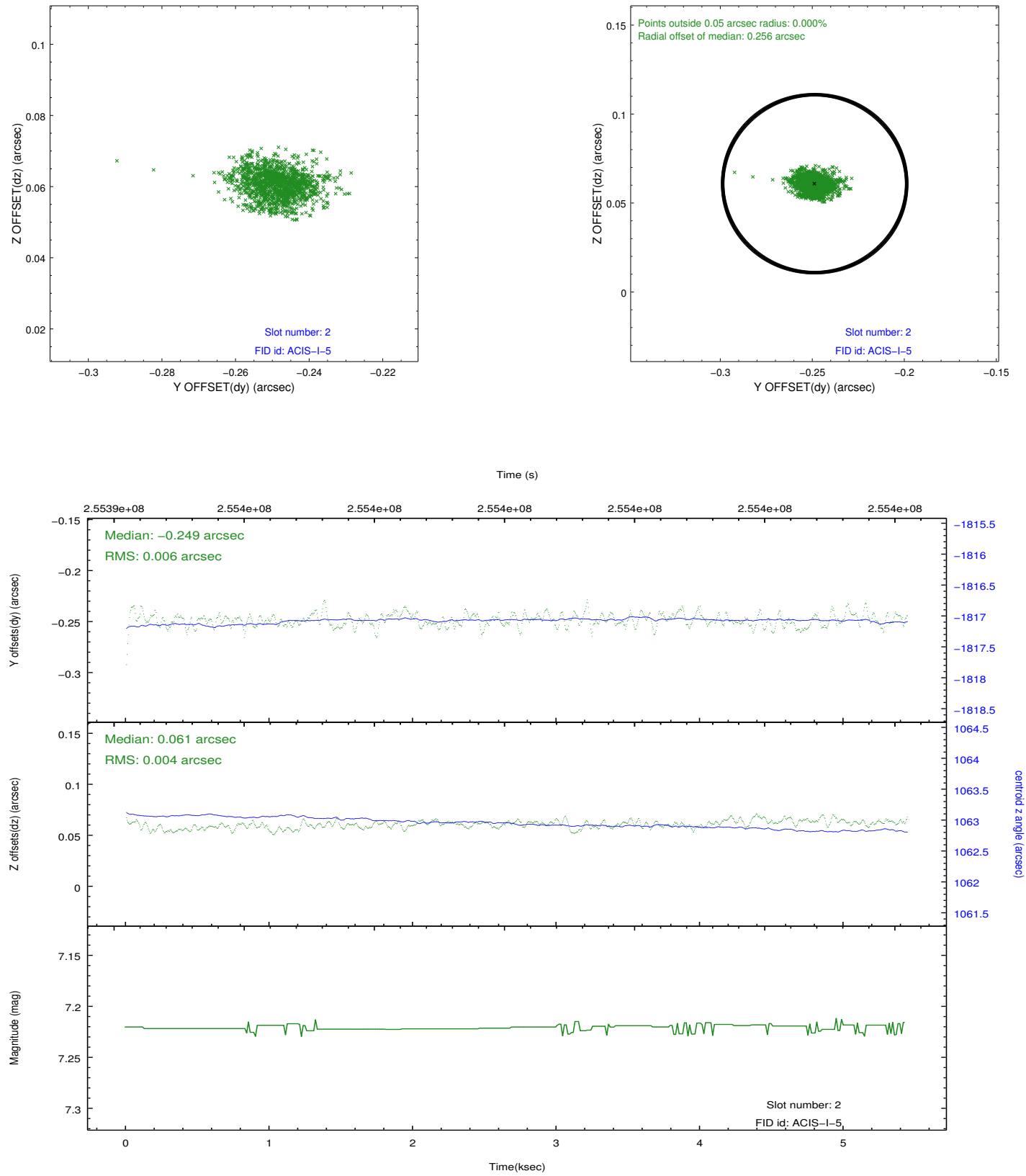
2.5.1 Slot 0



2.5.2 Slot 1



2.5.3 Slot 2



A Summary

A.1 Status

V&V Scientist	Jen Lauer
V&V Date (YYYY-MM-DD)	2012.03.26
V&V Edition	1
V&V Disposition and Status	OK
V&V Charge Time	4.95035898

A.2 Comments