

# V&V Reference Report

## L2 ASCDS Version : 7.6.7.1

Observation 7183 - L2 Version 002  
Chandra X-Ray Center

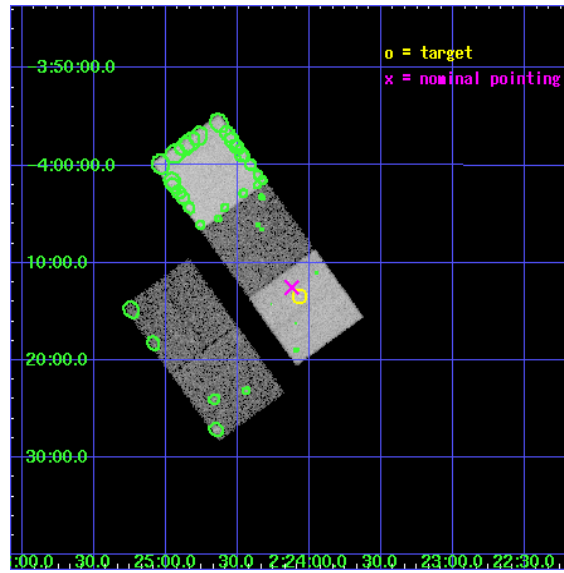
L2 Processing Date : Mar 31 2006

## Contents

<b>1</b>	<b>Front</b>	<b>2</b>
<b>2</b>	<b>OBI</b>	<b>3</b>
2.1	OBI . . . . .	3
2.1.1	Images . . . . .	3
2.1.2	Bias . . . . .	3
2.1.3	Parameters . . . . .	4
2.1.4	Events . . . . .	4
2.2	Compared Parameters . . . . .	5
2.3	Aspect . . . . .	6
2.4	Star Slots . . . . .	9
2.4.1	Slot 3 . . . . .	9
2.4.2	Slot 4 . . . . .	10
2.4.3	Slot 5 . . . . .	11
2.4.4	Slot 6 . . . . .	12
2.4.5	Slot 7 . . . . .	13
2.5	FID Slots . . . . .	14
2.5.1	Slot 0 . . . . .	14
2.5.2	Slot 1 . . . . .	15
2.5.3	Slot 2 . . . . .	16
<b>3</b>	<b>Point Sources</b>	<b>17</b>
<b>A</b>	<b>Summary</b>	<b>18</b>
A.1	Status . . . . .	18
A.2	Comments . . . . .	18

# 1 Front

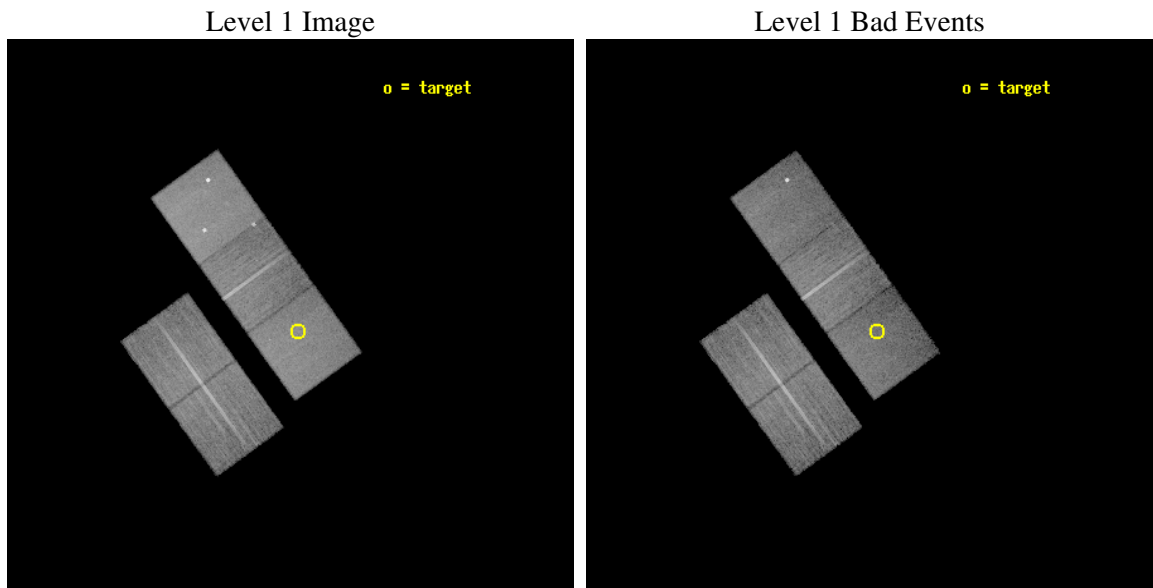
seq_num	800500
obs_id	7183
title	A detailed study of a $z>1$ galaxy cluster
observer	Dr Laurence Jones
object	XLSSJ022404.0-041328
dtcycle	0
cycle	P
ra_targ	36.017083
dec_targ	-4.224694
ra_nom	36.030597937857
dec_nom	-4.208932009306
roll_nom	54.157612759557
revision	2
ontime	20122.099961311
livetime	19859.189911642
ontime2	20118.958951116
ontime3	20118.958971053
ontime5	20122.099961311
ontime6	20115.818000793
ontime7	20122.099961311
l2events	168928



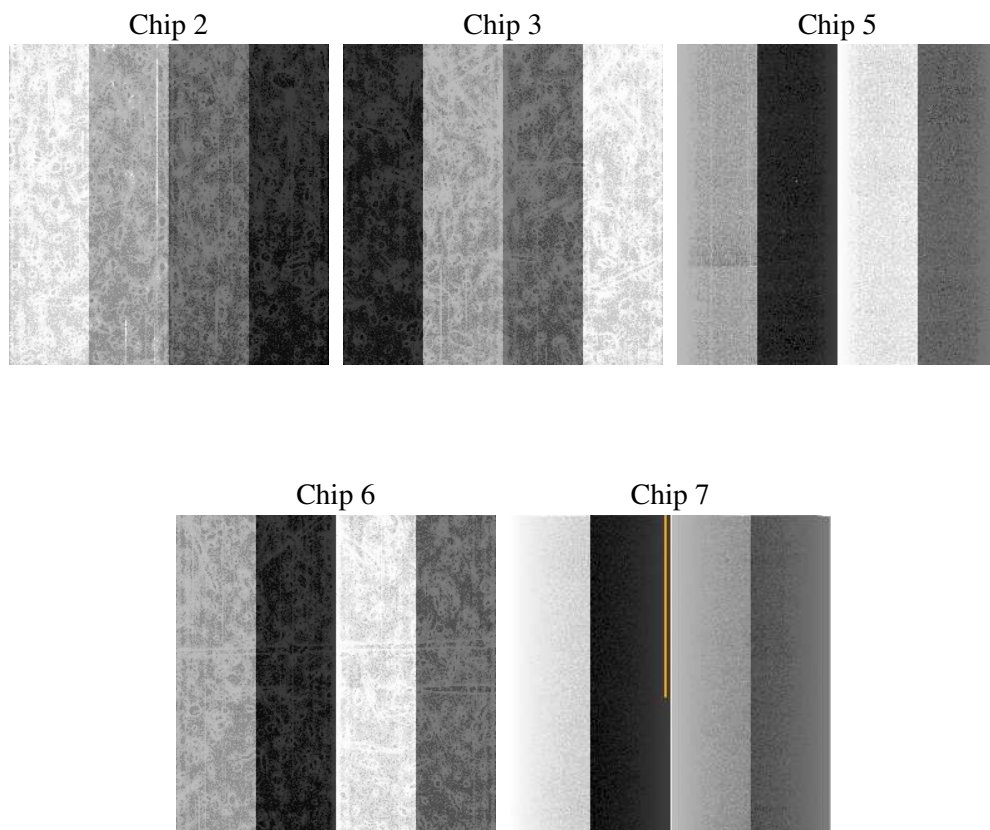
## 2 OBI

### 2.1 OBI

#### 2.1.1 Images



#### 2.1.2 Bias



### 2.1.3 Parameters

obi_num	0
ascdsver	7.6.7.1
caldsver	3.2.1
date	2006-04-01T02:12:39
revision	2

sched_exp_time	19940.000000
ontime	21079.332371056
ontime2	21076.191350937
ontime3	21076.191380799
ontime5	21079.332371056
ontime6	21073.050410539
ontime7	21079.332371056
l1events	747196

### 2.1.4 Events

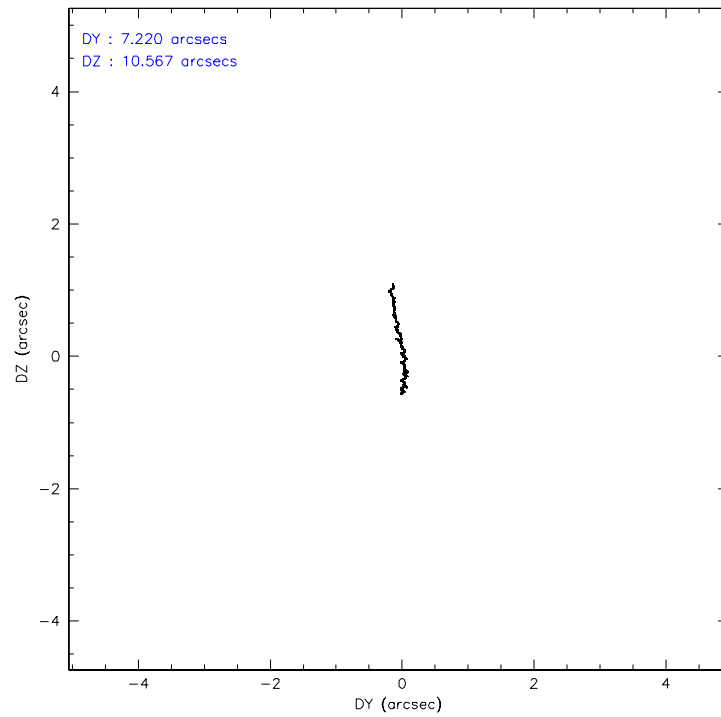
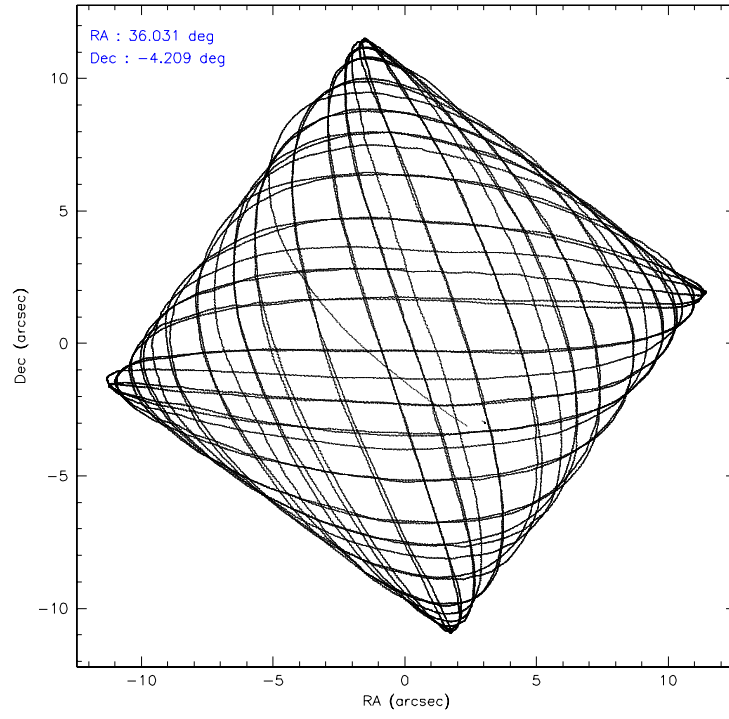
	ccd 2	ccd 3	ccd 5	ccd 6	ccd 7
level 1 events	138762	130115	189871	137706	150742
rejected events	126324	118060	104622	124524	90852
rejected %	91%	90%	55%	90%	60%

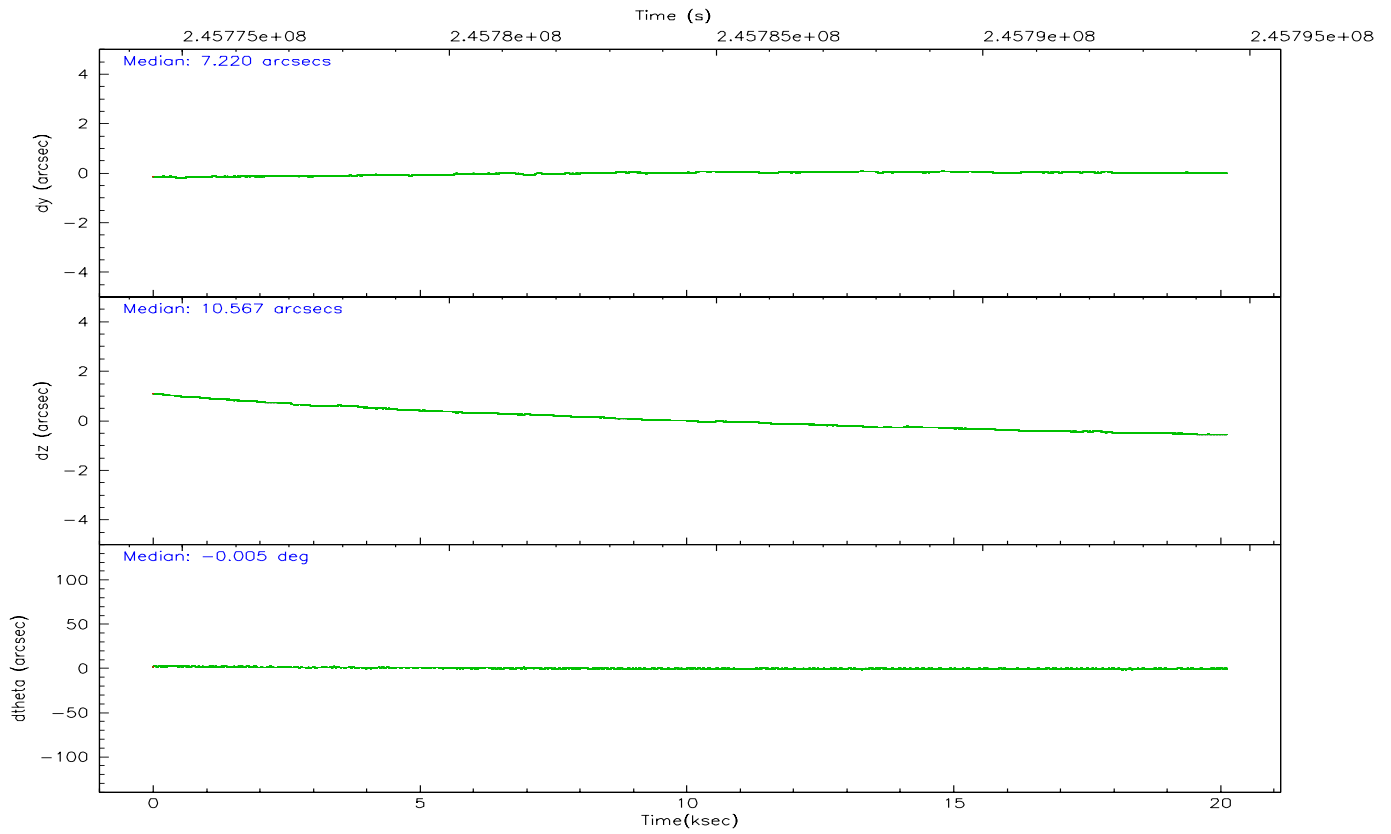
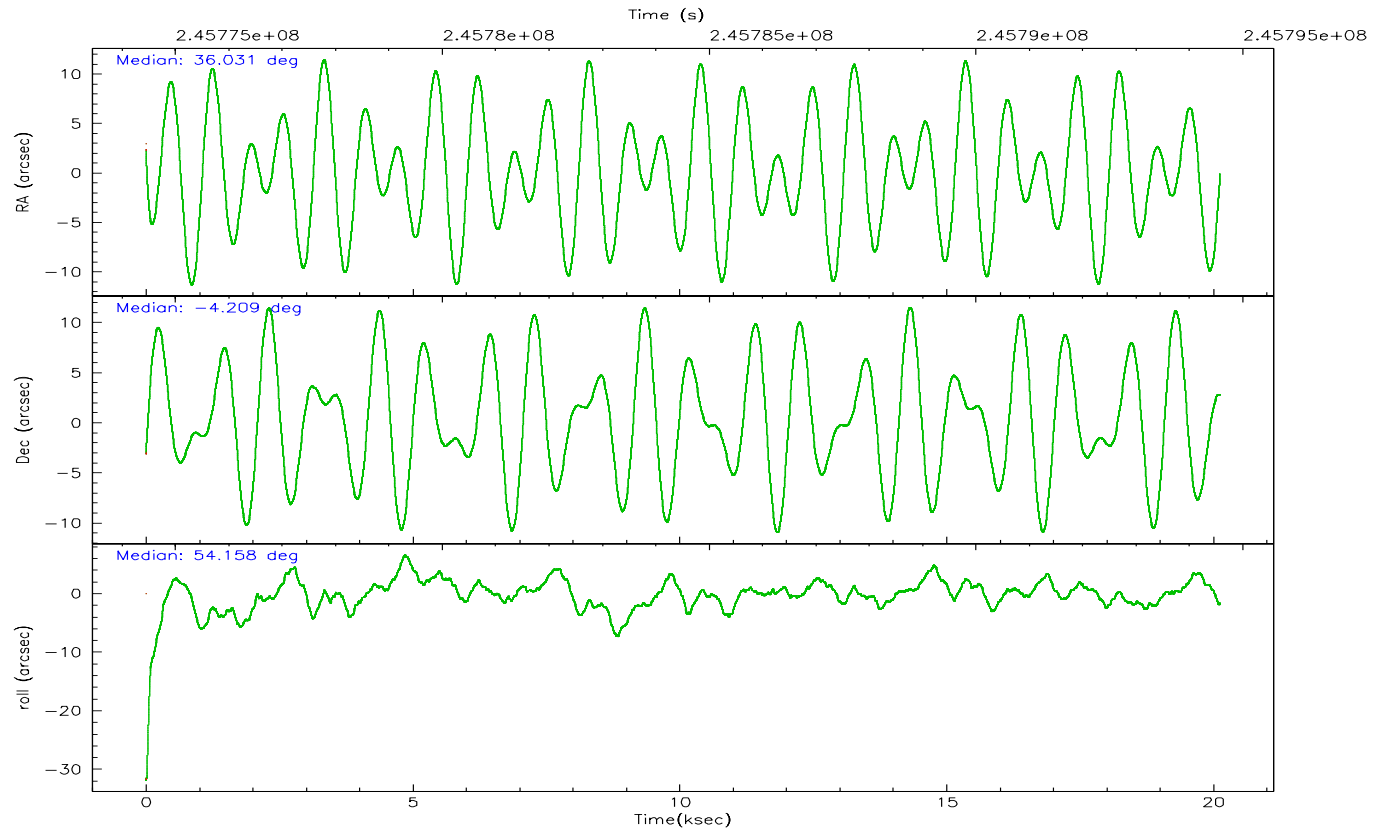
	ccd 2	ccd 3	ccd 5	ccd 6	ccd 7
grade 0 events	4633	4593	6346	4789	3470
	3%	3%	3%	3%	2%
grade 1 events	72	61	161	58	84
	0%	0%	0%	0%	0%
grade 2 events	2969	2723	28445	3036	15384
	2%	2%	14%	2%	10%
grade 3 events	1508	1453	2470	1542	3554
	1%	1%	1%	1%	2%
grade 4 events	1500	1408	2078	1463	3472
	1%	1%	1%	1%	2%
grade 5 events	4241	5362	11653	5629	11402
	3%	4%	6%	4%	7%
grade 6 events	2369	2450	50100	2999	36844
	1%	1%	26%	2%	24%
grade 7 events	121470	112065	88618	118190	76532
	87%	86%	46%	85%	50%

## 2.2 Compared Parameters

Parameter	Planned	Actual	Parameter	Planned	Actual
Instrument	ACIS	ACIS	Obspar format version number	6	6
Detector	ACIS-23567	ACIS-23567	Obspar file type	PREDICTED	ACTUAL
Grating	NONE	NONE	Obspar update status	NONE	UPDATED
Data mode	VFAINT	VFAINT	On-chip summing requested	N	N
Observation mode	POINTING	POINTING	Subarray requested	NONE	NONE
Pointing RA	36.028223	36.03059793785713	Alternating exposures requested	N	N
Pointing Dec	-4.236056	-4.208932009305977	Primary exposure time	0.000000	3.1
Pointing Roll	54.000825	54.15761275955705			
SIM focus pos (mm)	-0.684267	-0.6828225247311905			
SIM defocus (mm)	0	0.001444936568705701			
SIM translation stage pos (mm)	-190.132523	-190.1425803651734			
SIM translation stage offset (mm)	0	0.01005778216563158			
Observation start time	245774631.184000	245773154.11954			
Observation start date	2005-10-15T14:42:47	2005-10-15T14:19:14			
Observation end time	245794571.184000	245795808.67058			
Observation end date	2005-10-15T20:15:07	2005-10-15T20:36:48			
Read mode	TIMED	TIMED			

## 2.3 Aspect





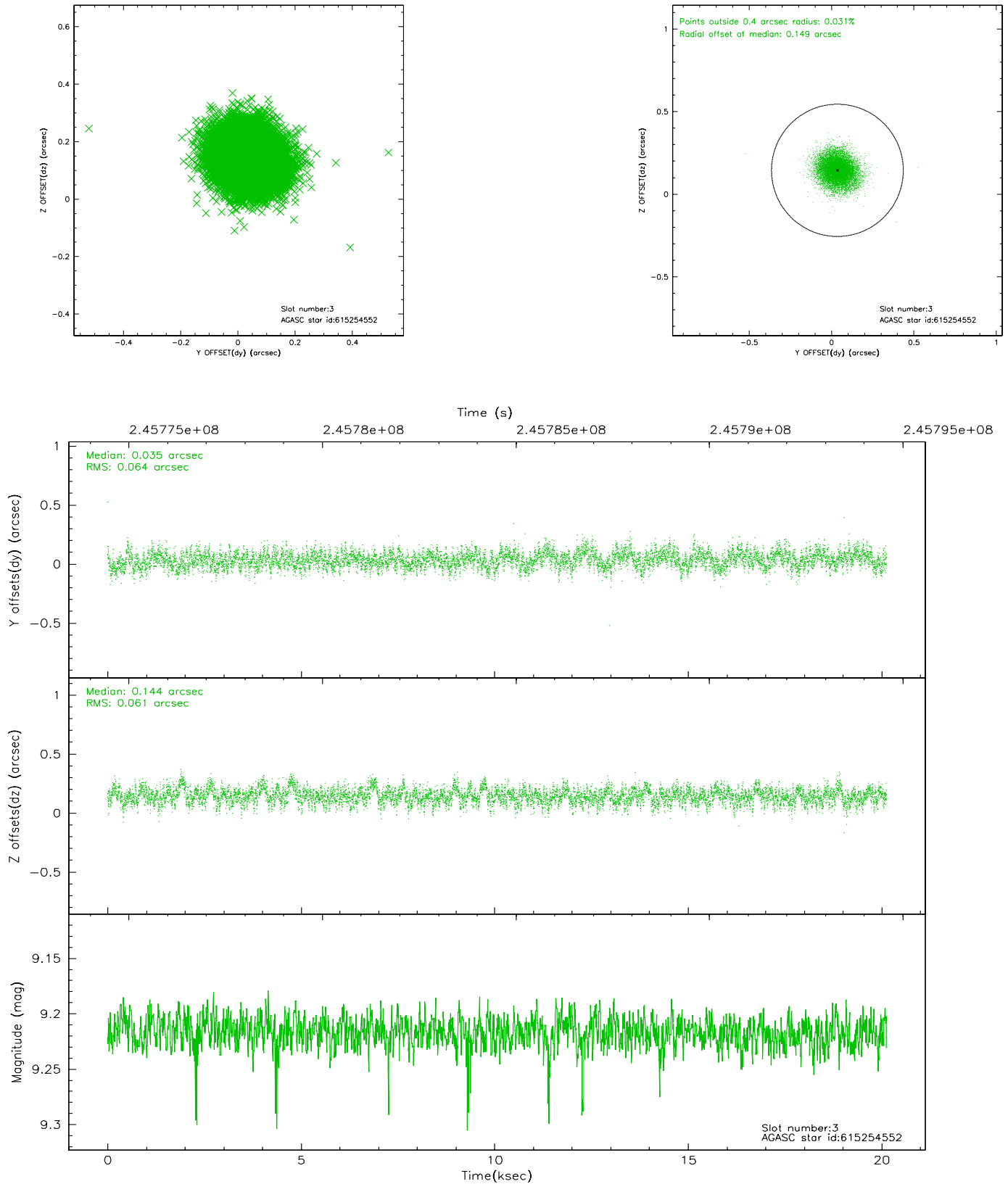
### Slot Statistics

slot	status	id	mag	n_pts	med_dy	med_dz	dr1	dr2	ra	dec	mean_y	mean_z
0	FID	ACIS-S-2	7.10	4909	-0.045	-0.026	0.011	0.022	0.000000	0.000000	-759.98	-1731.89
1	FID	ACIS-S-4	7.21	4908	0.045	0.021	0.010	0.017	0.000000	0.000000	2153.28	176.49
2	FID	ACIS-S-6	7.36	4909	-0.028	0.012	0.008	0.012	0.000000	0.000000	402.22	814.06
3	GUIDE	615254552	9.22	9810	0.035	0.144	0.095	0.150	36.600600	-3.877551	2251.98	-904.89
4	GUIDE	615256360	7.78	9817	-0.127	-0.185	0.077	0.124	36.286608	-3.875886	1594.69	10.76
5	GUIDE	615256944	9.80	9794	0.217	0.027	0.116	0.227	35.497386	-4.510719	-1919.85	959.79
6	GUIDE	615260160	9.70	9810	0.008	0.045	0.138	0.219	35.737387	-3.921265	302.20	1510.79
7	GUIDE	615260392	7.62	9817	-0.139	-0.037	0.059	0.096	35.914136	-3.376682	2261.90	2150.41

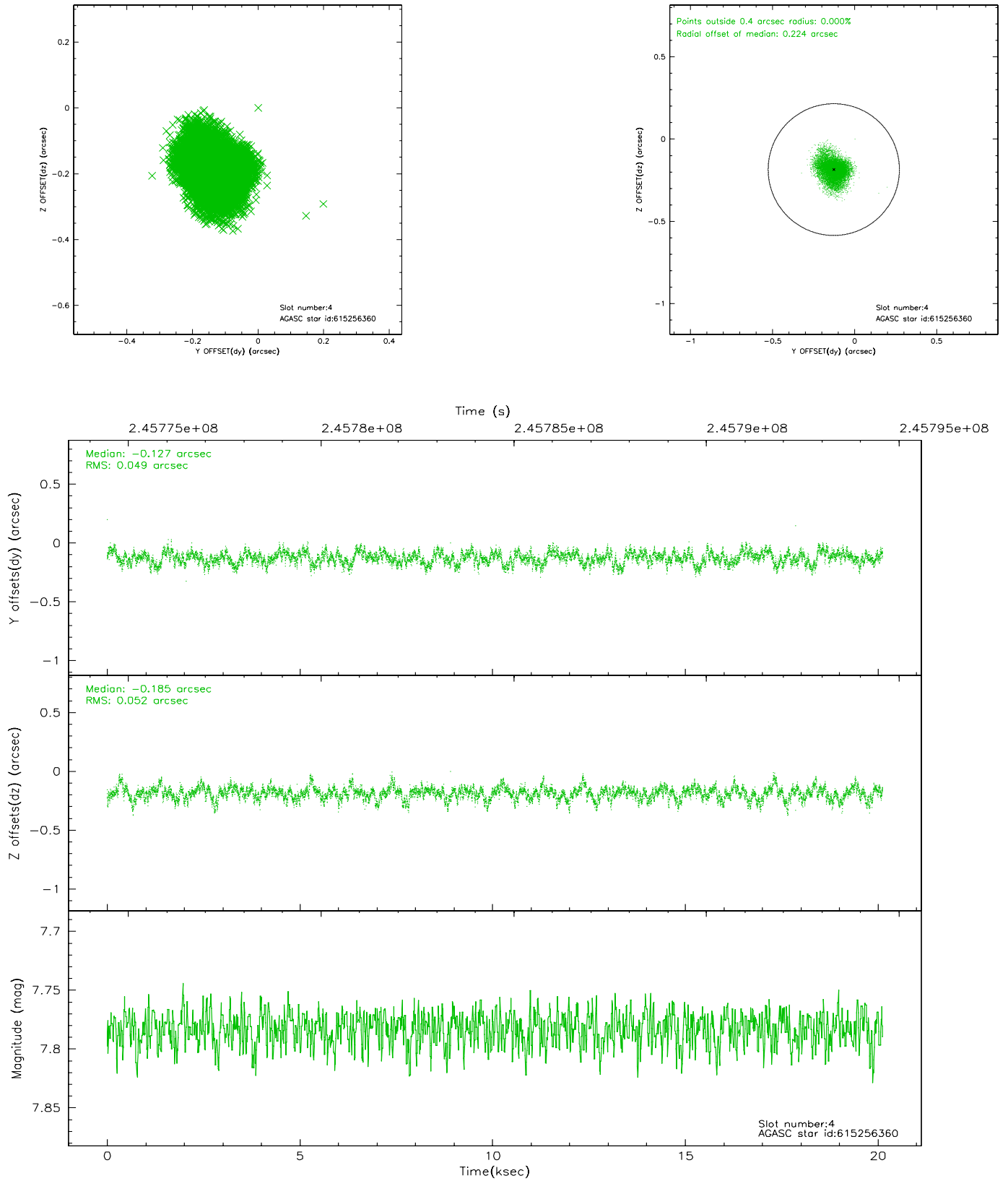


## 2.4 Star Slots

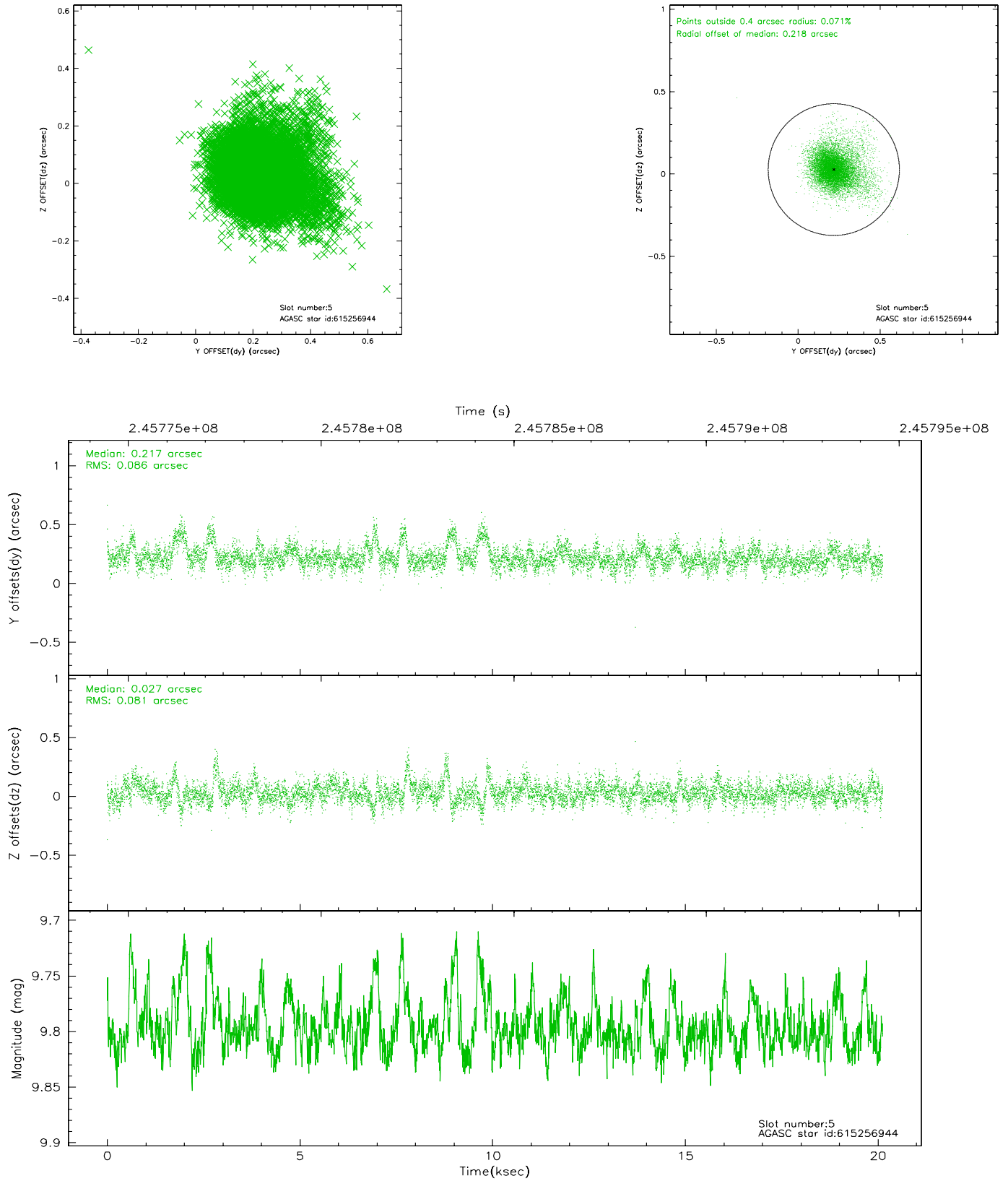
### 2.4.1 Slot 3



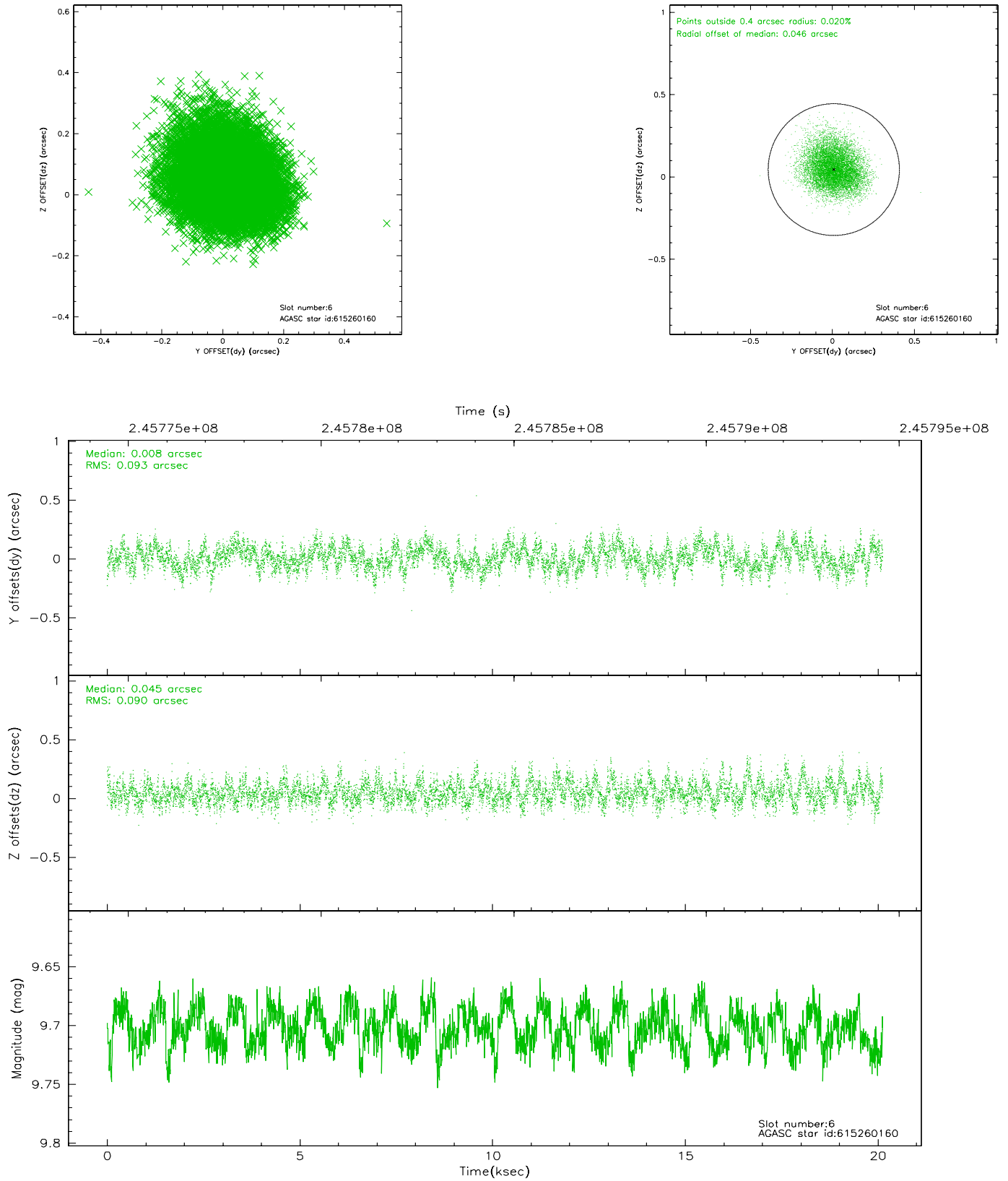
## 2.4.2 Slot 4



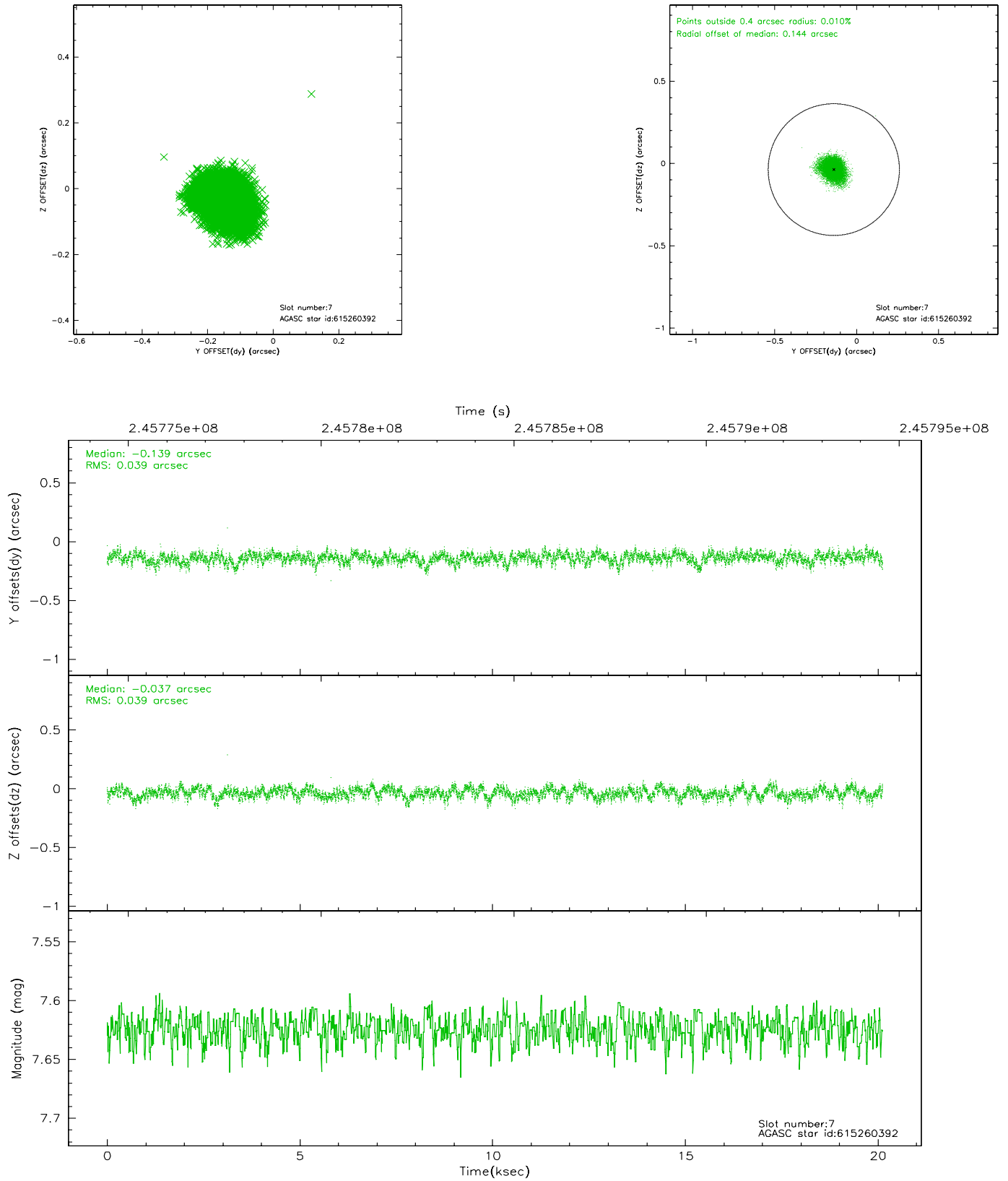
### 2.4.3 Slot 5



## 2.4.4 Slot 6

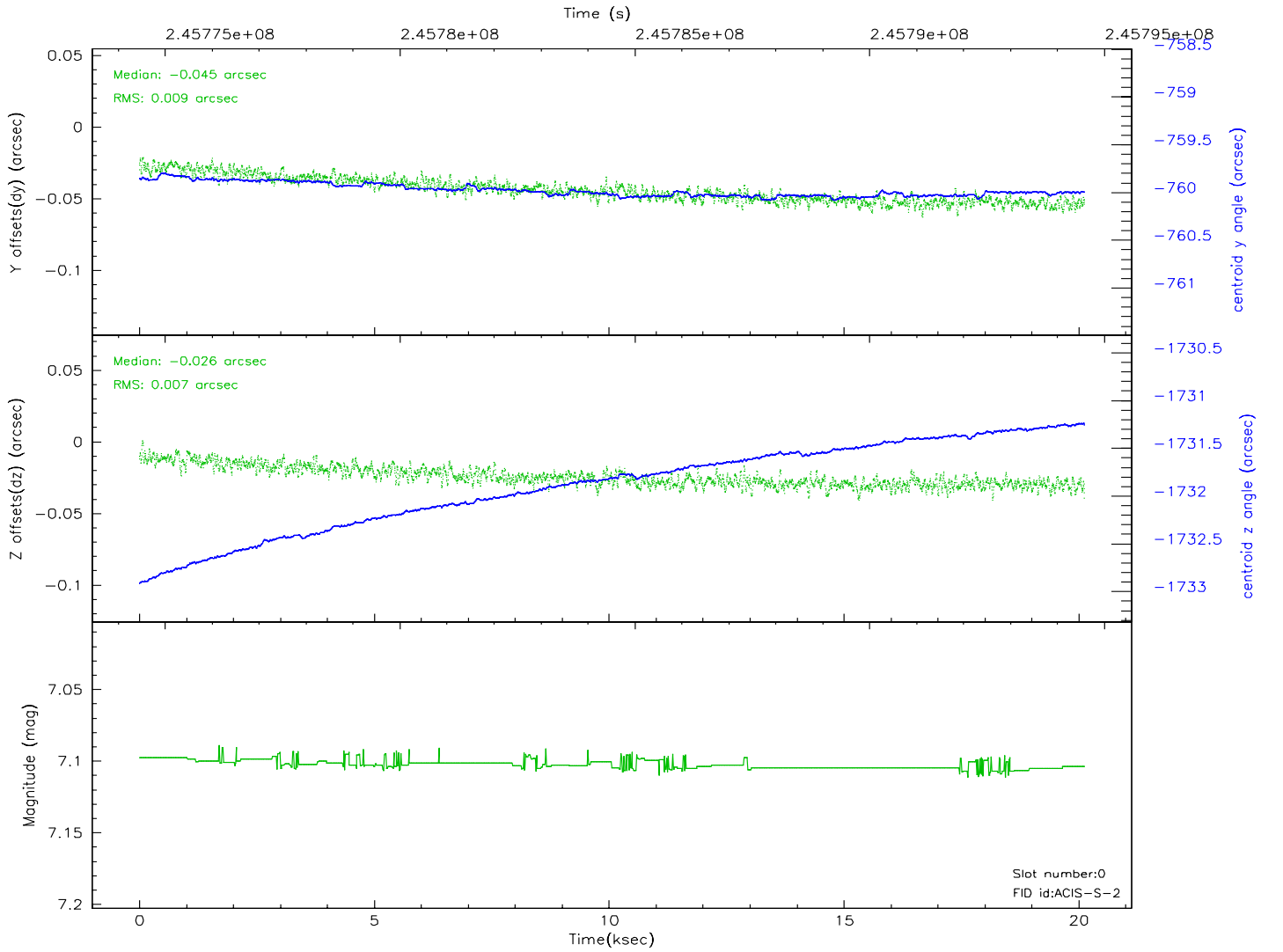
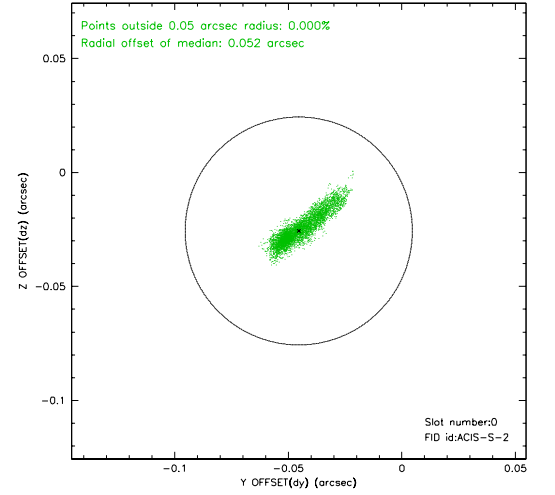
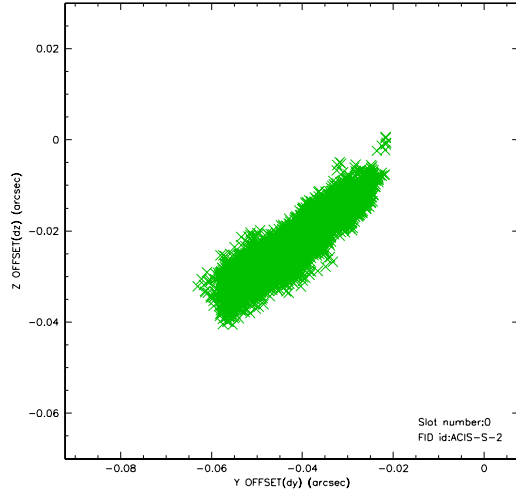


## 2.4.5 Slot 7

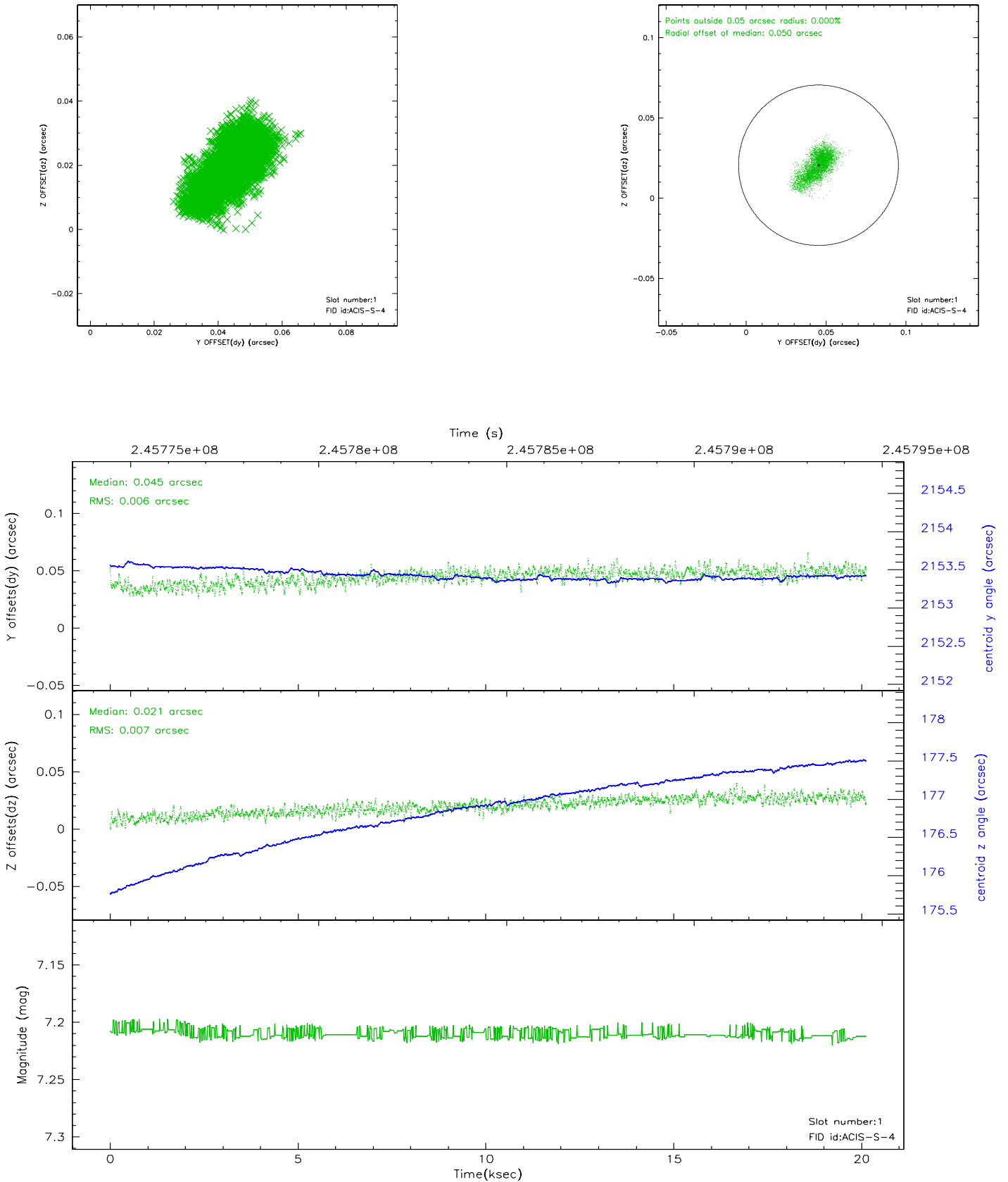


## 2.5 FID Slots

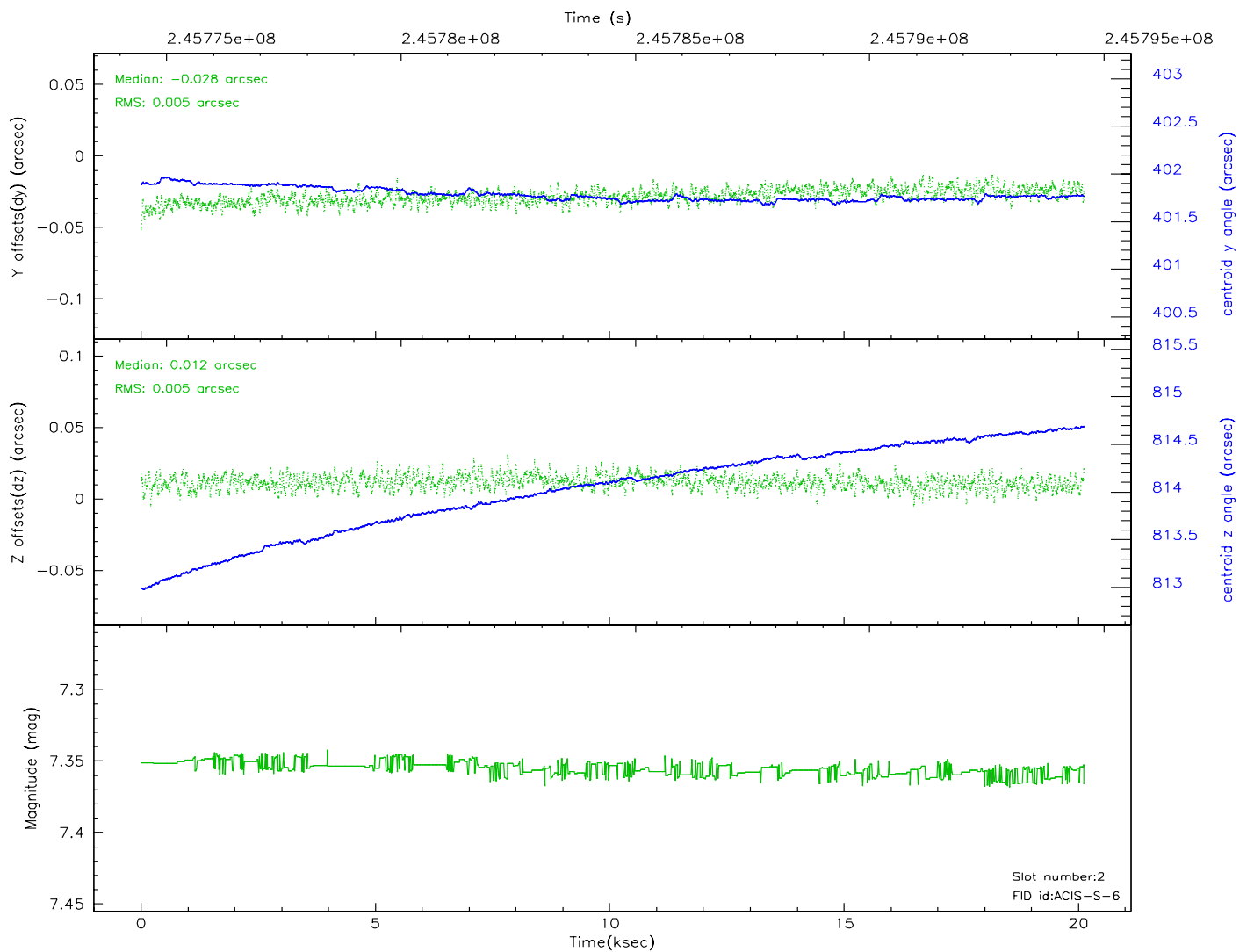
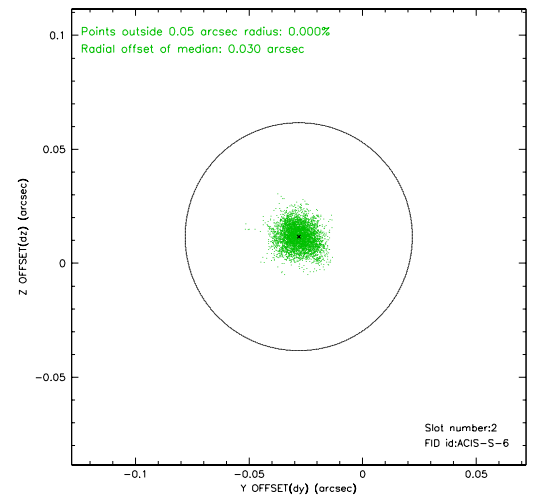
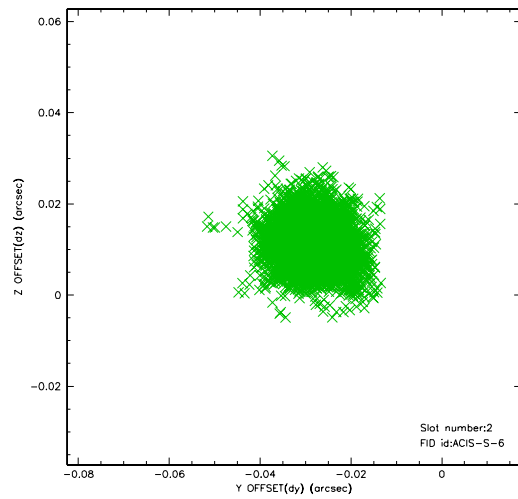
### 2.5.1 Slot 0



## 2.5.2 Slot 1

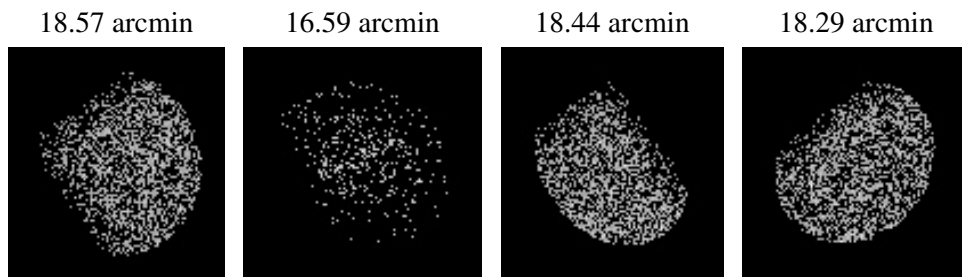


### 2.5.3 Slot 2





### 3 Point Sources



## A Summary

### A.1 Status

V&V Scientist	Beth Sundheim
V&V Date (YYYY-MM-DD)	2006.04.03
V&V Edition	1
V&V Disposition and Status	OK
V&V Charge Time	20.12209

### A.2 Comments