

V&V Reference Report

L2 ASCDS Version : 7.6.7.1

Observation 7182 - L2 Version 002
Chandra X-Ray Center

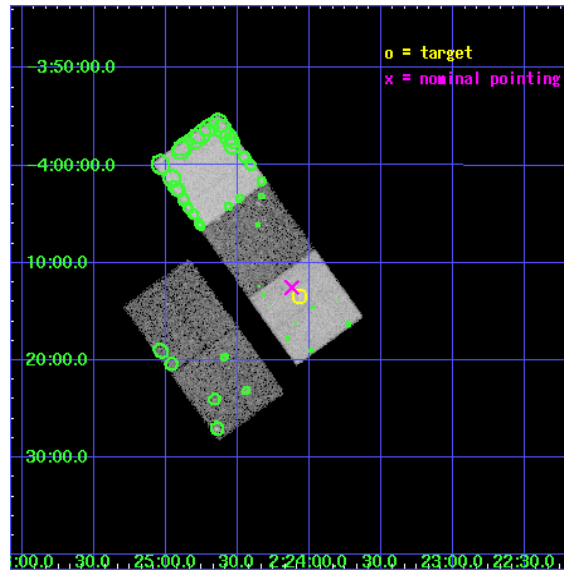
L2 Processing Date : Mar 31 2006

Contents

1	Front	2
2	OBI	3
2.1	OBI	3
2.1.1	Images	3
2.1.2	Bias	3
2.1.3	Parameters	4
2.1.4	Events	4
2.2	Compared Parameters	5
2.3	Aspect	6
2.4	Star Slots	9
2.4.1	Slot 3	9
2.4.2	Slot 4	10
2.4.3	Slot 5	11
2.4.4	Slot 6	12
2.4.5	Slot 7	13
2.5	FID Slots	14
2.5.1	Slot 0	14
2.5.2	Slot 1	15
2.5.3	Slot 2	16
3	Point Sources	17
A	Summary	18
A.1	Status	18
A.2	Comments	18

1 Front

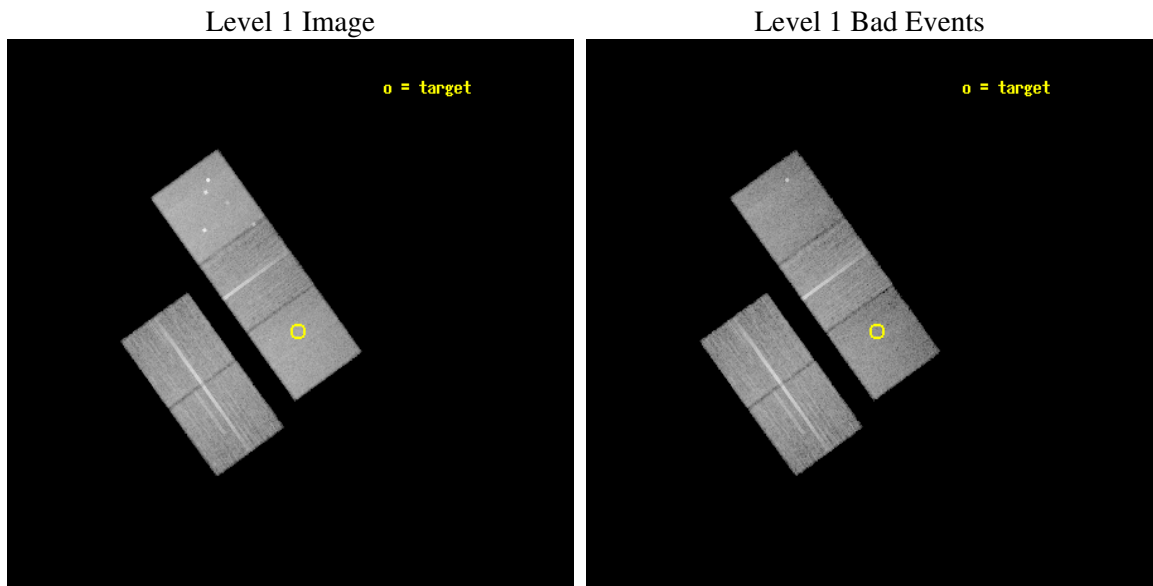
seq_num	800500
obs_id	7182
title	A detailed study of a $z>1$ galaxy cluster
observer	Dr Laurence Jones
object	XLSSJ022404.0-041328
dtcycle	0
cycle	P
ra_targ	36.017083
dec_targ	-4.224694
ra_nom	36.030606206766
dec_nom	-4.2089343667023
roll_nom	54.157594016442
revision	2
ontime	23175.59995544
livetime	22872.793680393
ontime2	23169.31796506
ontime3	23175.59995544
ontime5	23175.59995544
ontime6	23172.45898518
ontime7	23175.59995544
l2events	187175



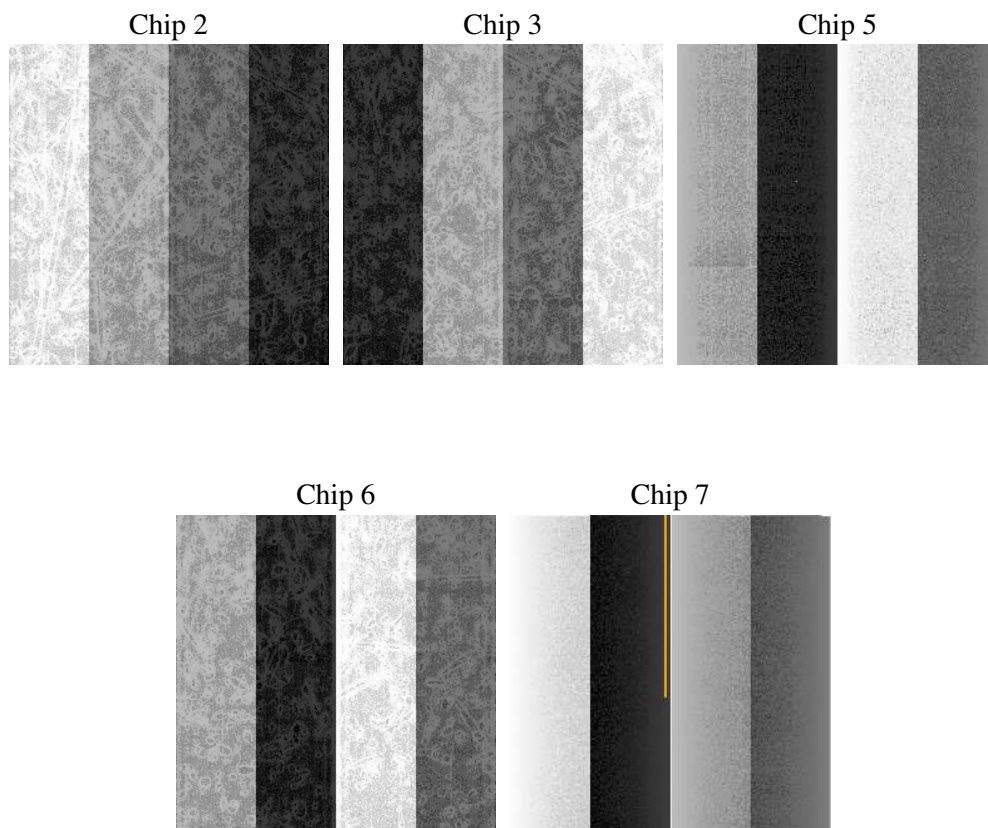
2 OBI

2.1 OBI

2.1.1 Images



2.1.2 Bias



2.1.3 Parameters

obi_num	0
ascdsver	7.6.7.1
caldbver	3.2.1
date	2006-04-01T01:26:46
revision	2

sched_exp_time	23000.000000
ontime	24057.003447801
ontime2	24050.721457422
ontime3	24057.003447801
ontime5	24057.003447801
ontime6	24053.862477541
ontime7	24057.003447801
l1events	819024

2.1.4 Events

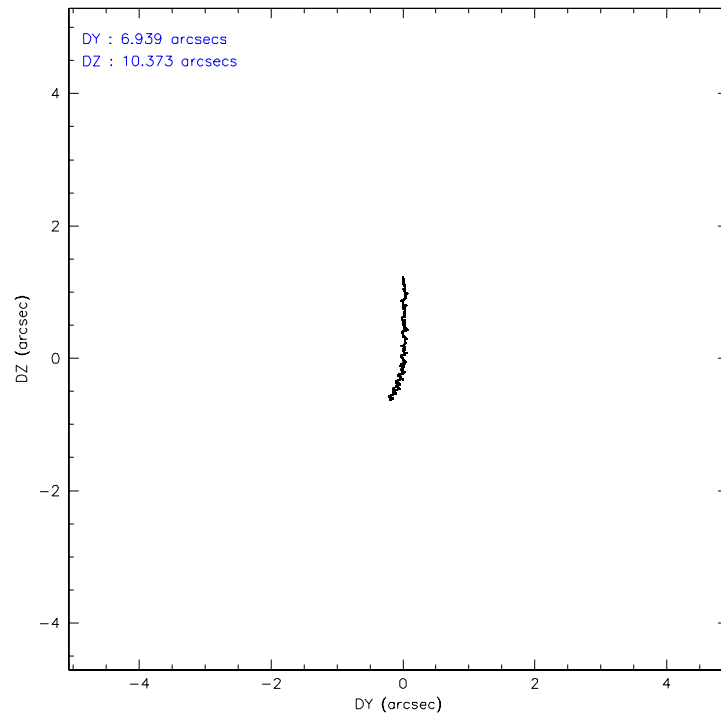
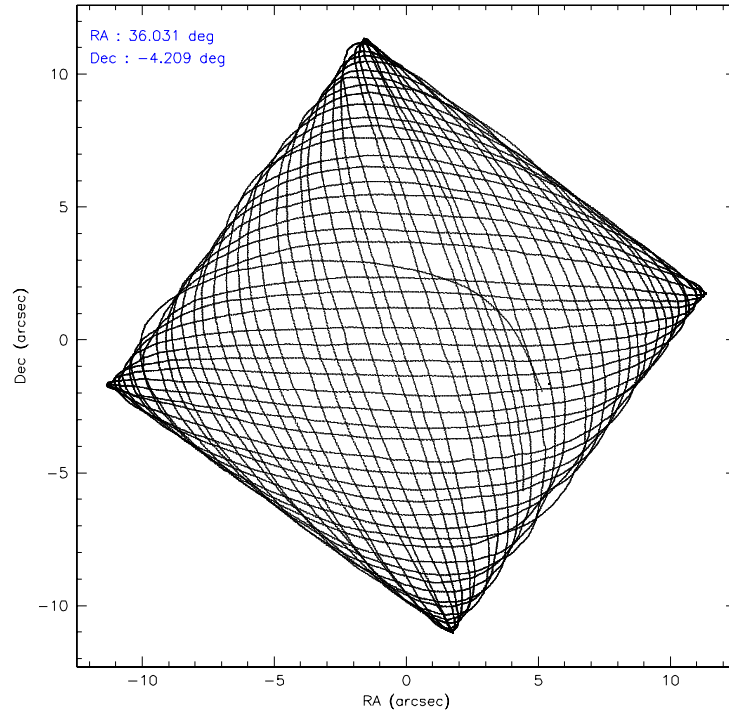
	ccd 2	ccd 3	ccd 5	ccd 6	ccd 7
level 1 events	151293	146296	205717	148932	166786
rejected events	137462	132912	111960	133975	100372
rejected %	90%	90%	54%	89%	60%

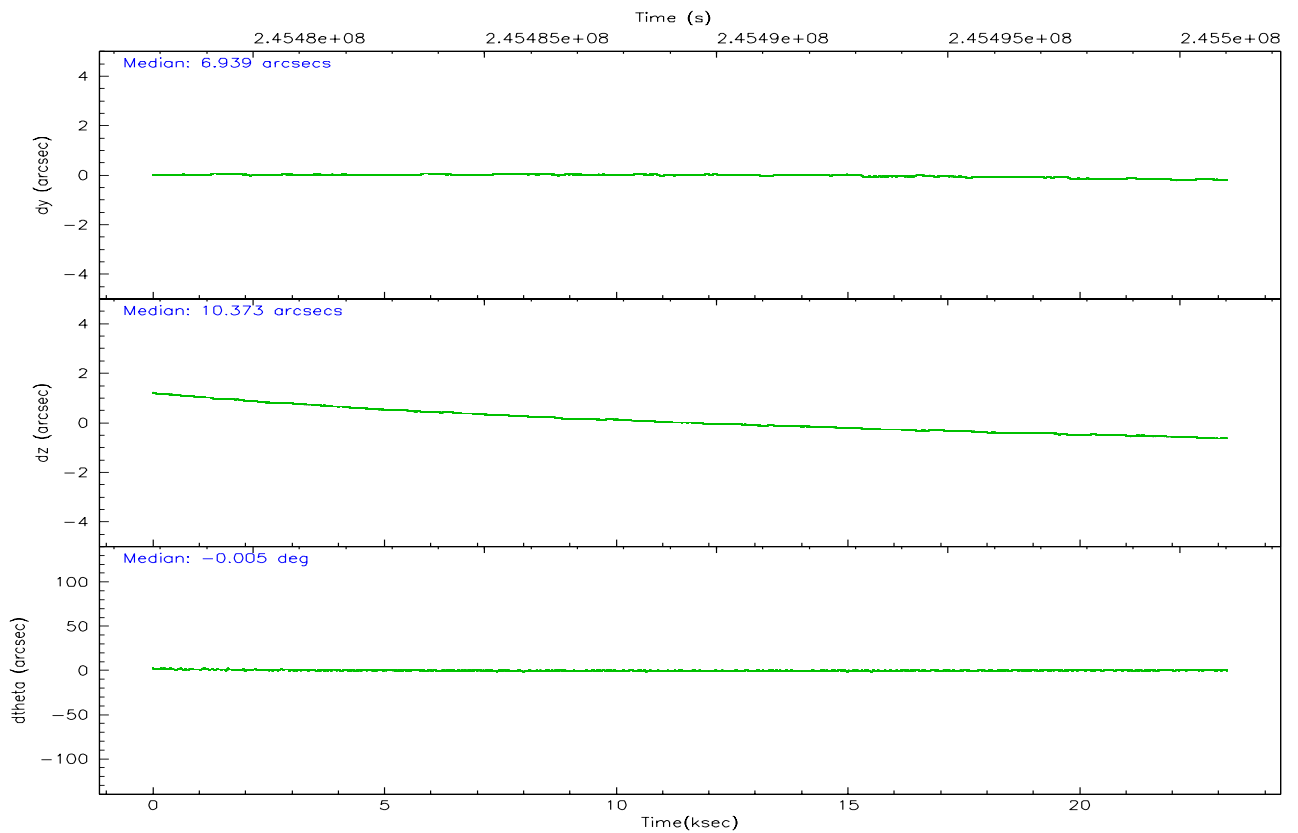
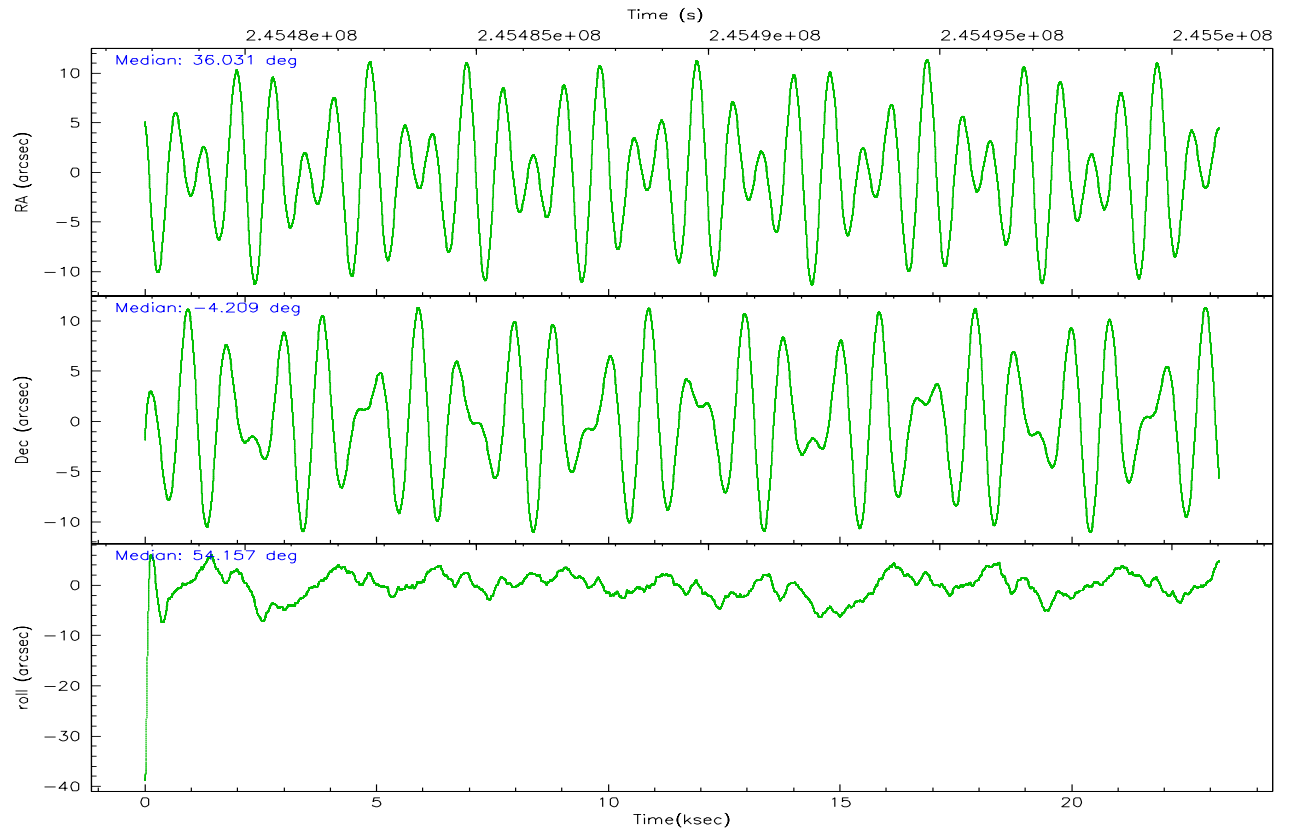
	ccd 2	ccd 3	ccd 5	ccd 6	ccd 7
grade 0 events	5146	4896	6893	5355	3816
	3%	3%	3%	3%	2%
grade 1 events	70	74	73	57	87
	0%	0%	0%	0%	0%
grade 2 events	3399	2975	30726	3350	17186
	2%	2%	14%	2%	10%
grade 3 events	1633	1677	2433	1673	3800
	1%	1%	1%	1%	2%
grade 4 events	1604	1649	2265	1773	3690
	1%	1%	1%	1%	2%
grade 5 events	4764	5875	11163	6141	12087
	3%	4%	5%	4%	7%
grade 6 events	2570	2716	55198	3343	40426
	1%	1%	26%	2%	24%
grade 7 events	132107	126434	96966	127240	85694
	87%	86%	47%	85%	51%

2.2 Compared Parameters

Parameter	Planned	Actual	Parameter	Planned	Actual
Instrument	ACIS	ACIS	Obspar format version number	6	6
Detector	ACIS-23567	ACIS-23567	Obspar file type	PREDICTED	ACTUAL
Grating	NONE	NONE	Obspar update status	NONE	UPDATED
Data mode	VFAINT	VFAINT	On-chip summing requested	N	N
Observation mode	POINTING	POINTING	Subarray requested	NONE	NONE
Pointing RA	36.028223	36.03060620676631	Alternating exposures requested	N	N
Pointing Dec	-4.236056	-4.208934366702262	Primary exposure time	0.000000	3.1
Pointing Roll	54.000825	54.15759401644209			
SIM focus pos (mm)	-0.684267	-0.6828225247311905			
SIM defocus (mm)	0	0.001444936568705701			
SIM translation stage pos (mm)	-190.132523	-190.1425803651734			
SIM translation stage offset (mm)	0	0.01005778216563158			
Observation start time	245478024.184000	245476588.29338			
Observation start date	2005-10-12T04:19:20	2005-10-12T03:56:28			
Observation end time	245501024.184000	245502221.49456			
Observation end date	2005-10-12T10:42:40	2005-10-12T11:03:41			
Read mode	TIMED	TIMED			

2.3 Aspect



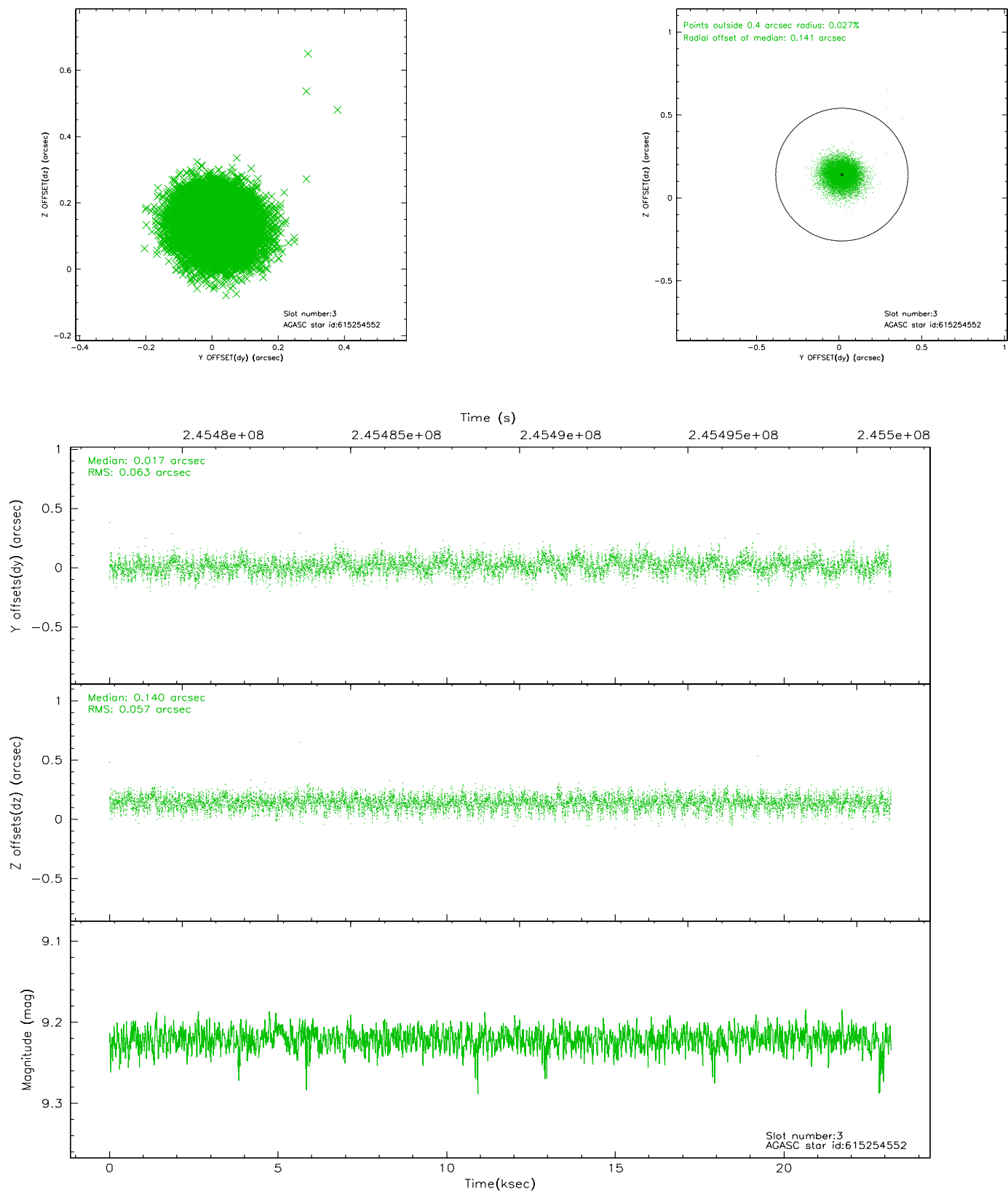


Slot Statistics

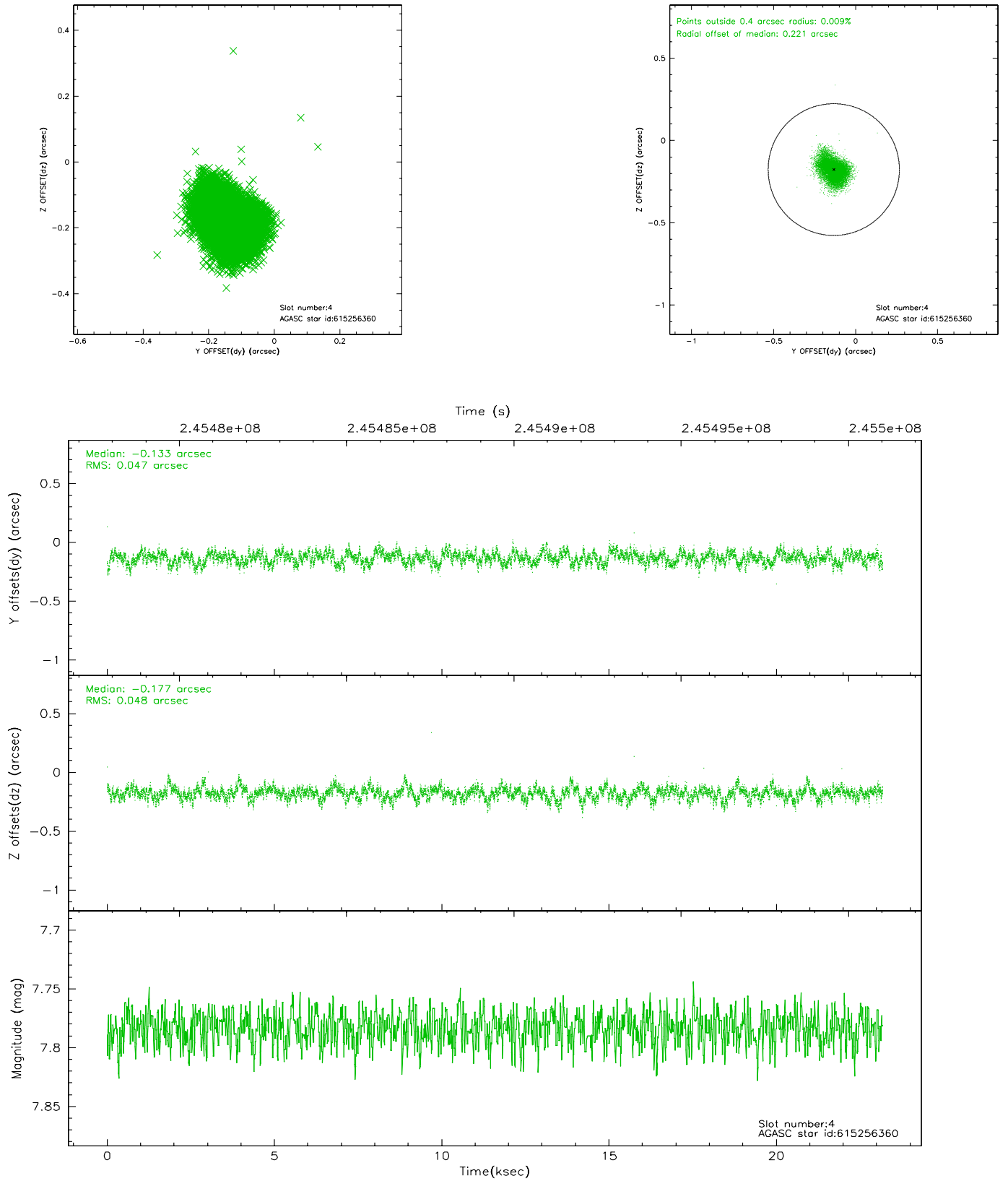
slot	status	id	mag	n_pts	med_dy	med_dz	dr1	dr2	ra	dec	mean_y	mean_z
0	FID	ACIS-S-2	7.11	5654	-0.052	-0.029	0.010	0.027	0.000000	0.000000	-759.69	-1731.71
1	FID	ACIS-S-4	7.21	5653	0.048	0.025	0.010	0.019	0.000000	0.000000	2153.60	176.72
2	FID	ACIS-S-6	7.35	5654	-0.026	0.011	0.010	0.015	0.000000	0.000000	402.46	814.24
3	GUIDE	615254552	9.22	11300	0.017	0.140	0.091	0.144	36.600600	-3.877551	2252.00	-904.88
4	GUIDE	615256360	7.78	11307	-0.133	-0.177	0.071	0.117	36.286608	-3.875886	1594.68	10.79
5	GUIDE	615256944	9.80	11276	0.224	0.010	0.134	0.228	35.497386	-4.510719	-1919.85	959.75
6	GUIDE	615260160	9.71	11299	0.014	0.054	0.149	0.238	35.737387	-3.921265	302.23	1510.78
7	GUIDE	615260392	7.63	11308	-0.128	-0.028	0.059	0.098	35.914136	-3.376682	2261.91	2150.42

2.4 Star Slots

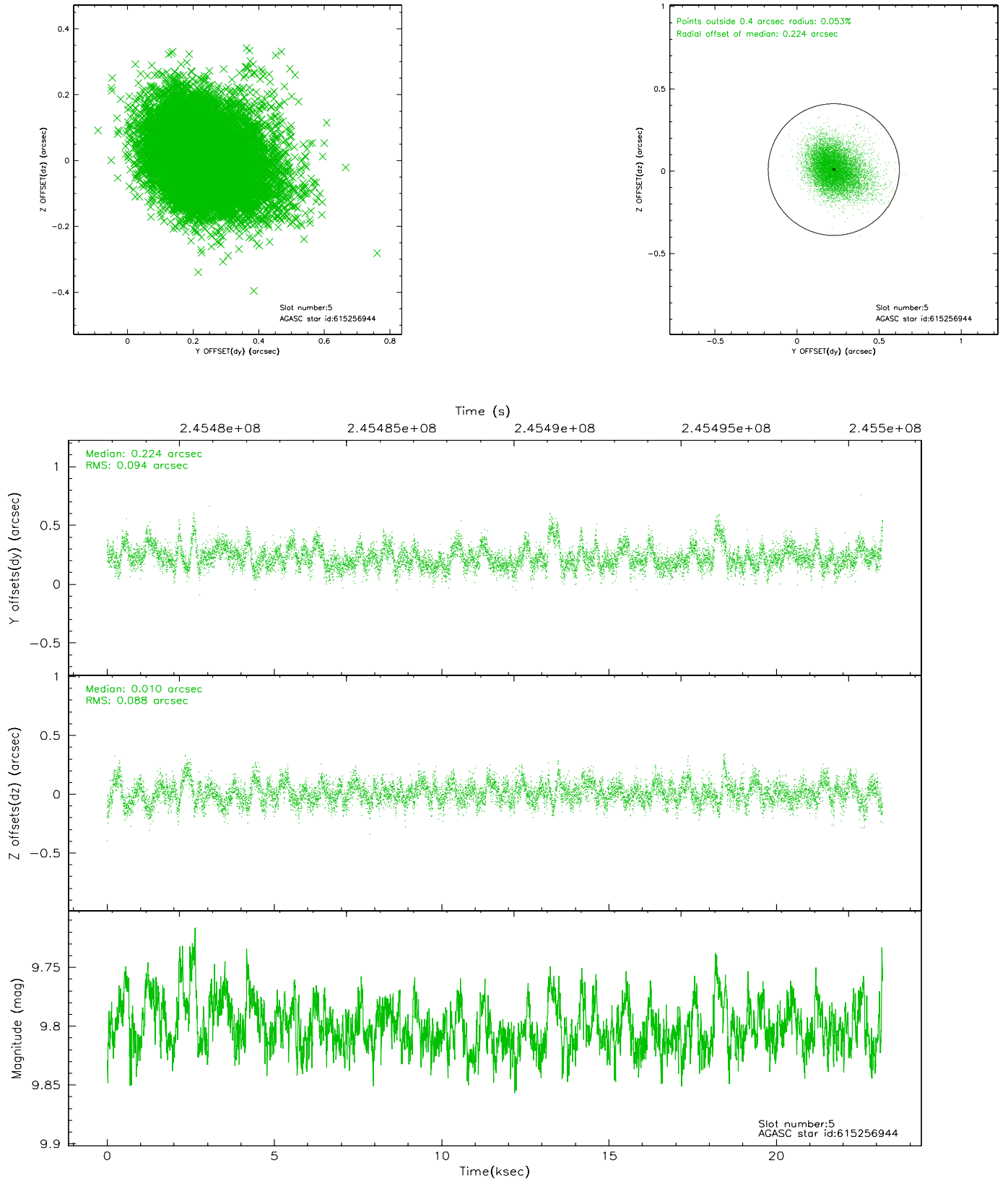
2.4.1 Slot 3



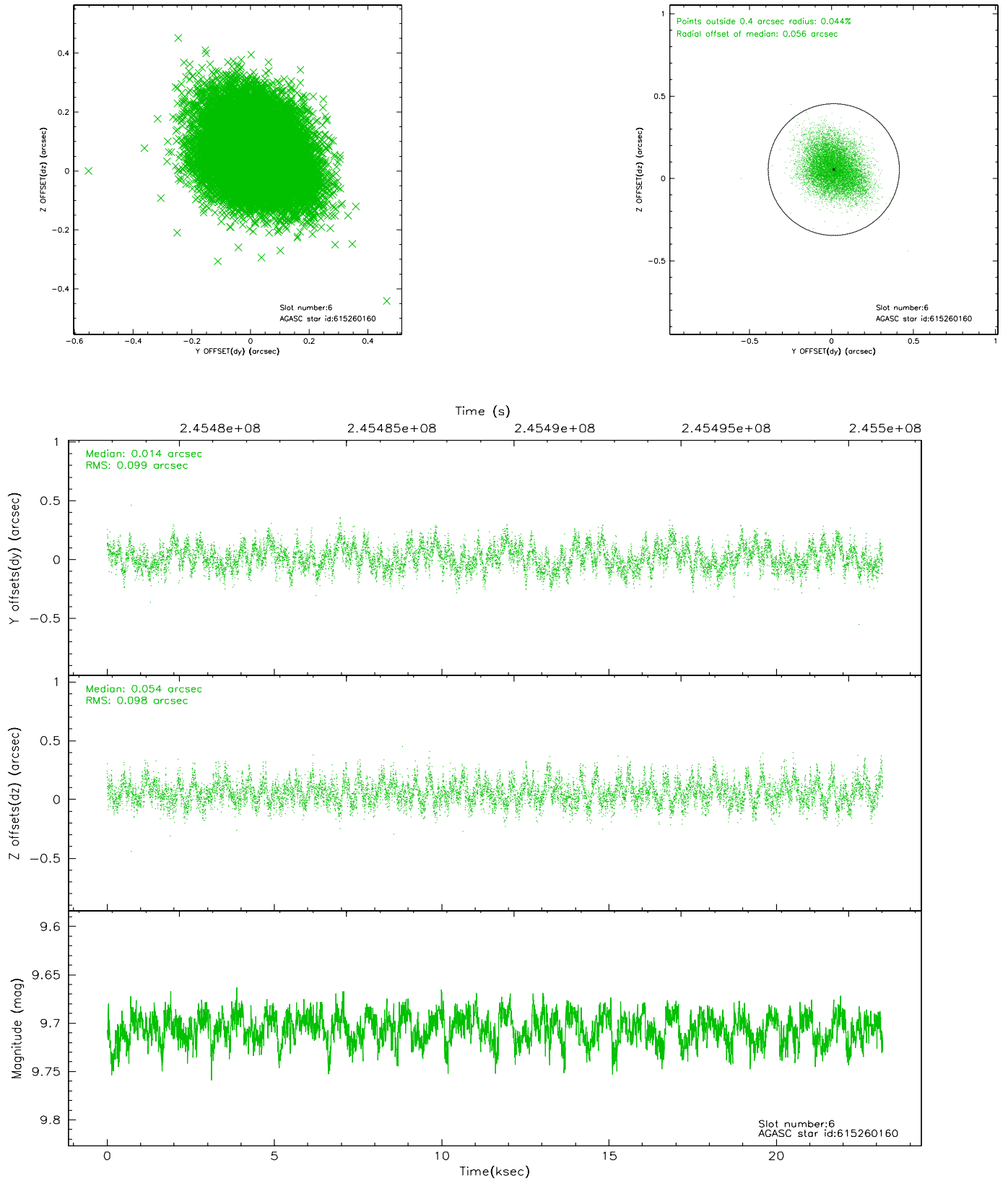
2.4.2 Slot 4



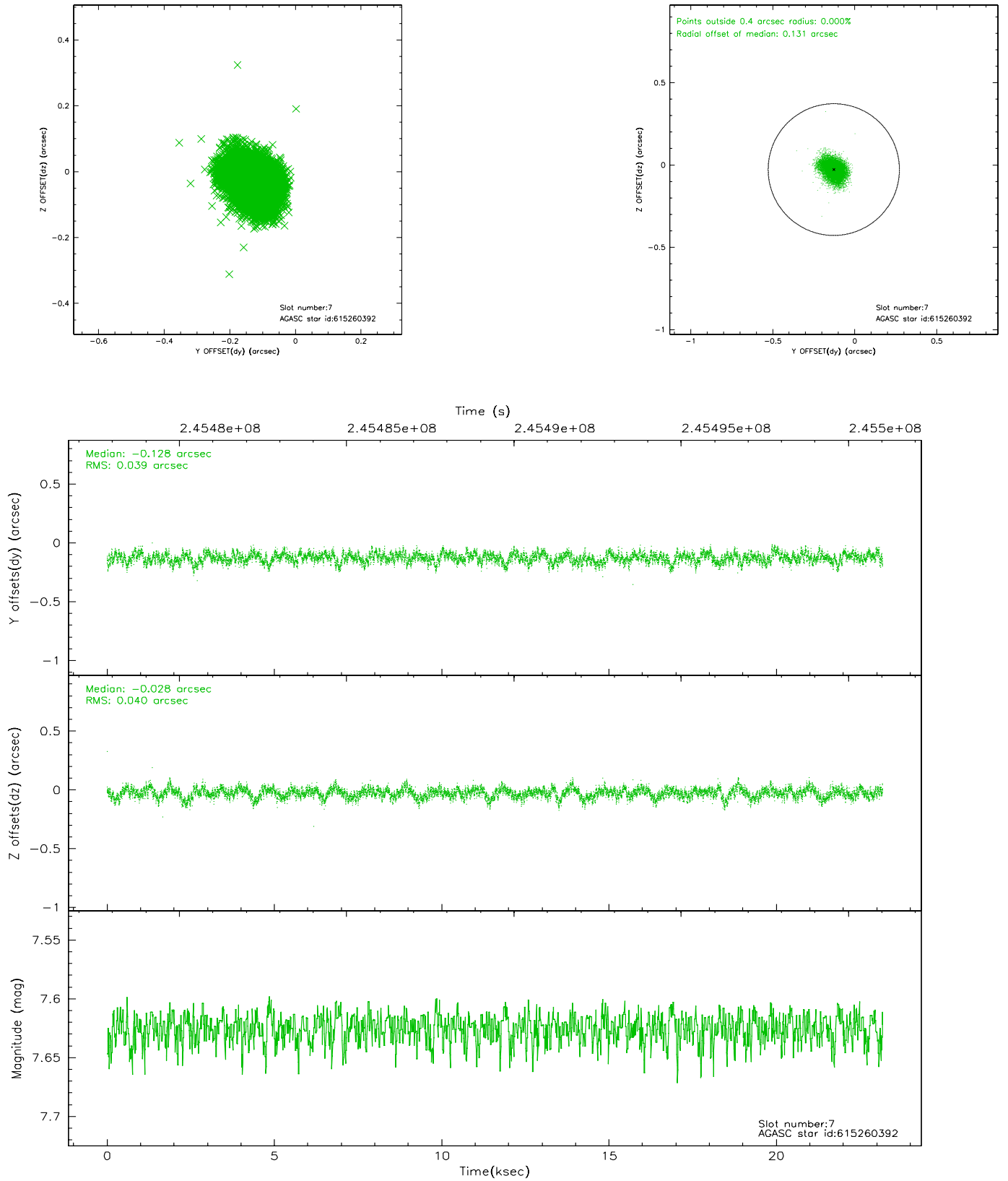
2.4.3 Slot 5



2.4.4 Slot 6

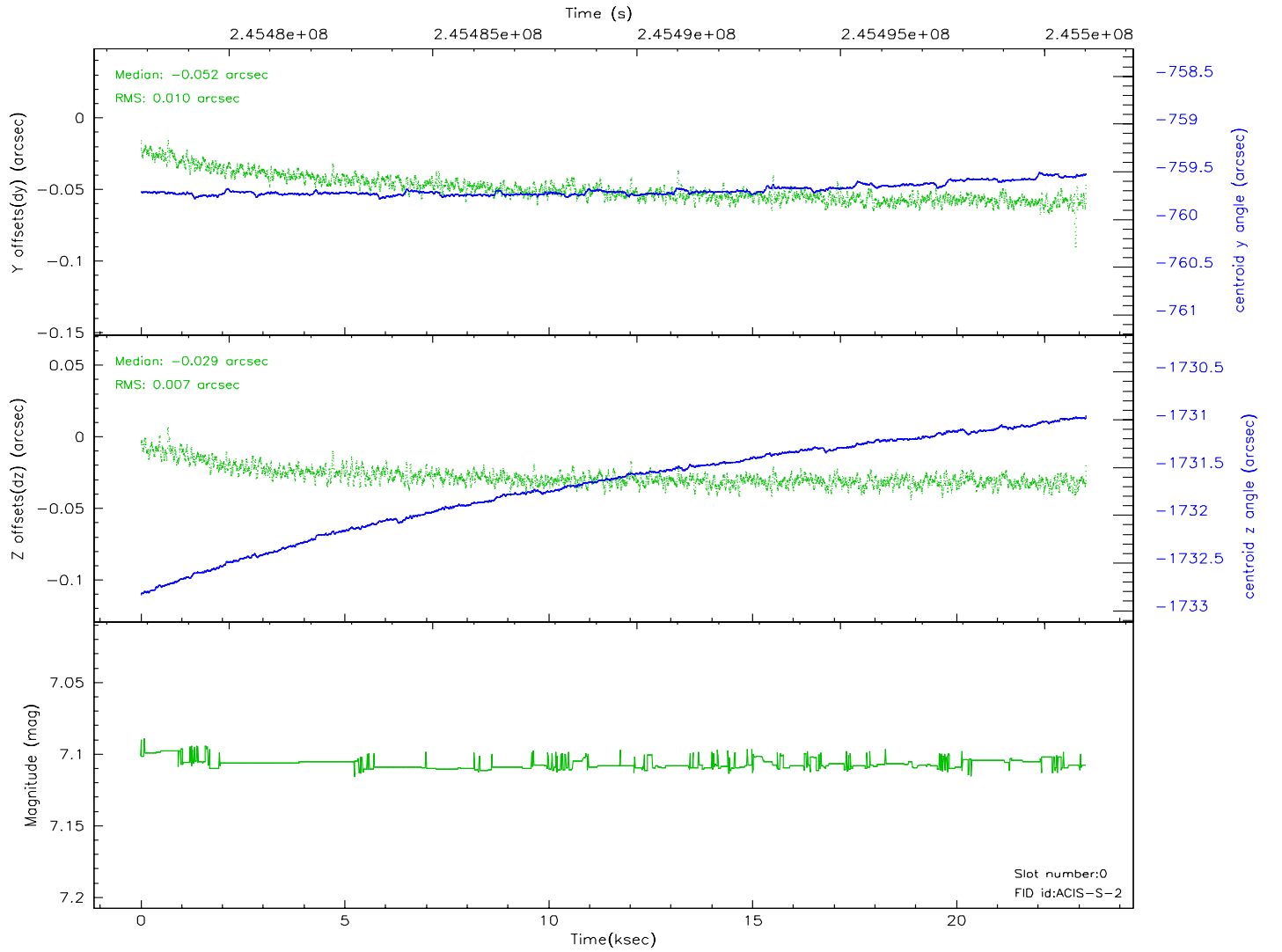
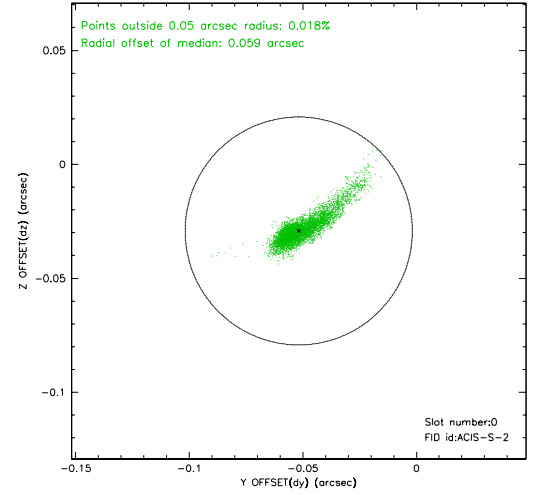
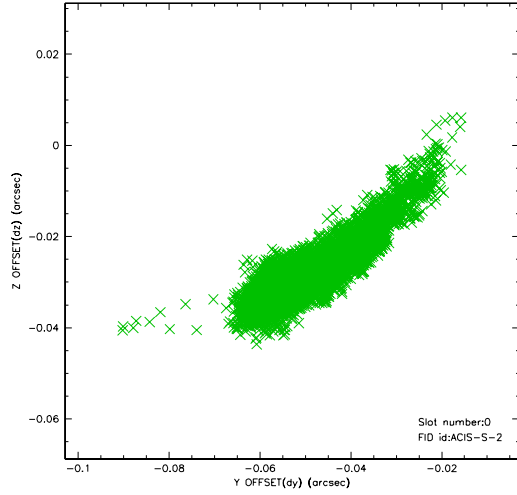


2.4.5 Slot 7

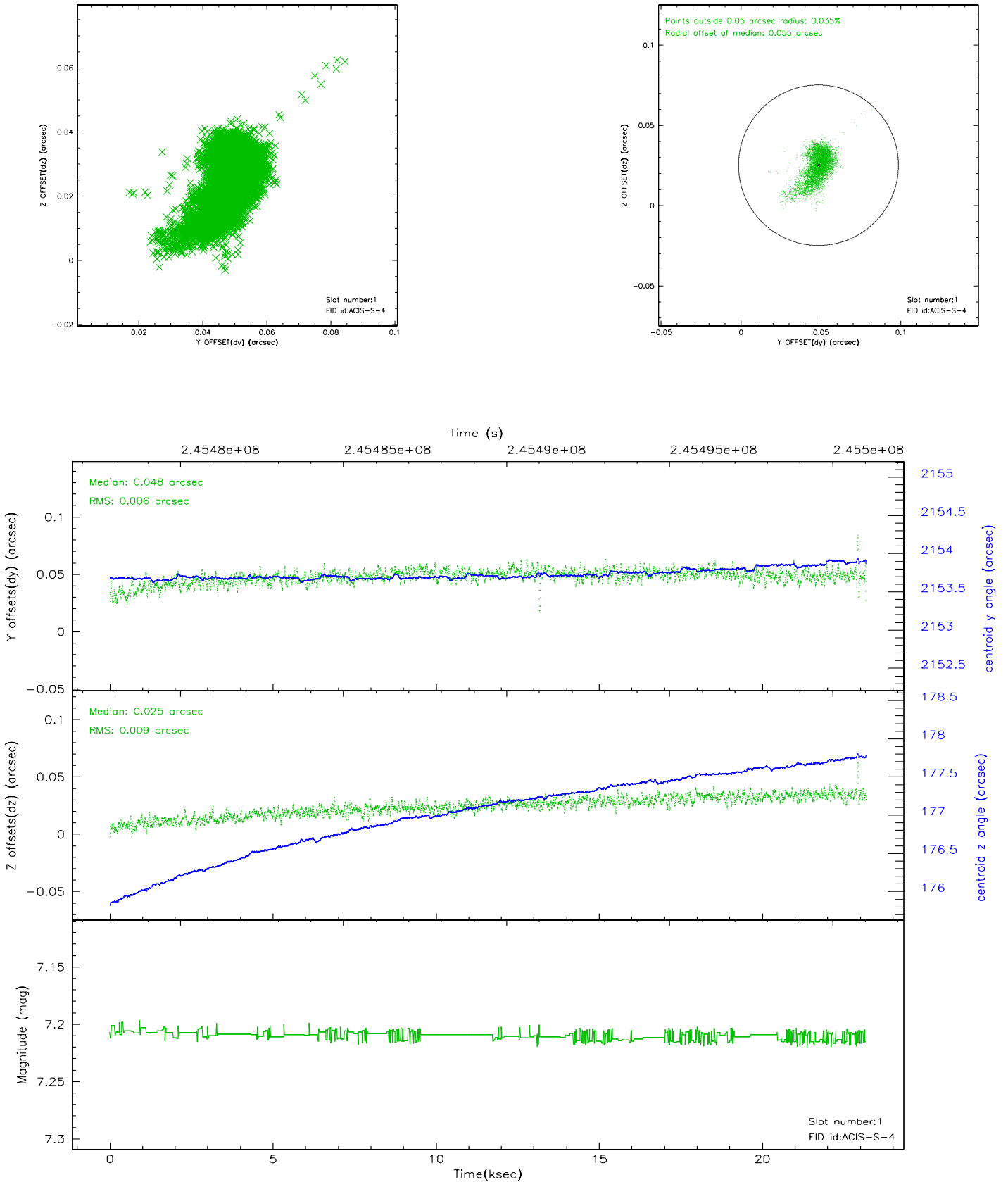


2.5 FID Slots

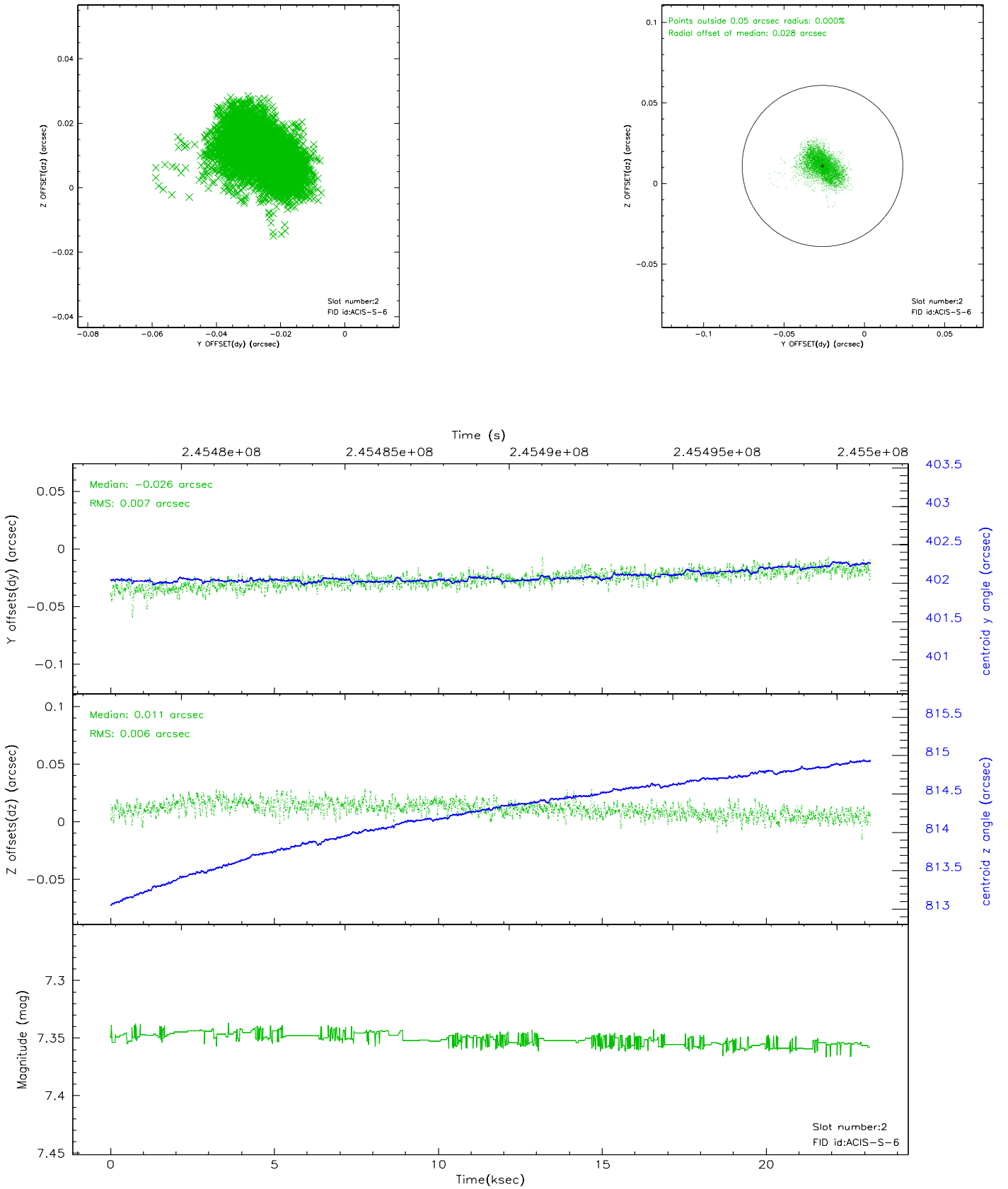
2.5.1 Slot 0



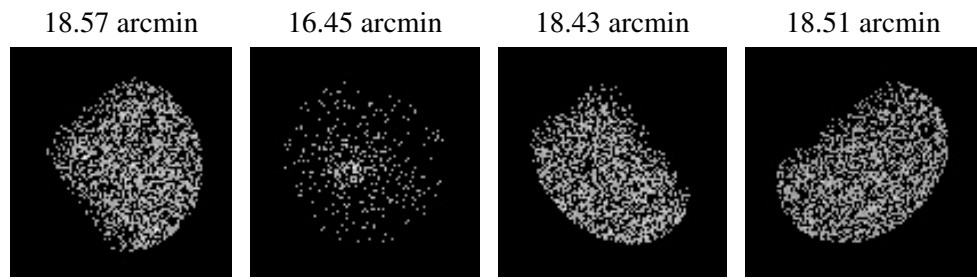
2.5.2 Slot 1



2.5.3 Slot 2



3 Point Sources



A Summary

A.1 Status

V&V Scientist	Beth Sundheim
V&V Date (YYYY-MM-DD)	2006.04.03
V&V Edition	1
V&V Disposition and Status	OK
V&V Charge Time	23.17559

A.2 Comments