

V&V Reference Report

L2 ASCDS Version : 7.6.7.1

Observation 7173 - L2 Version 002
Chandra X-Ray Center

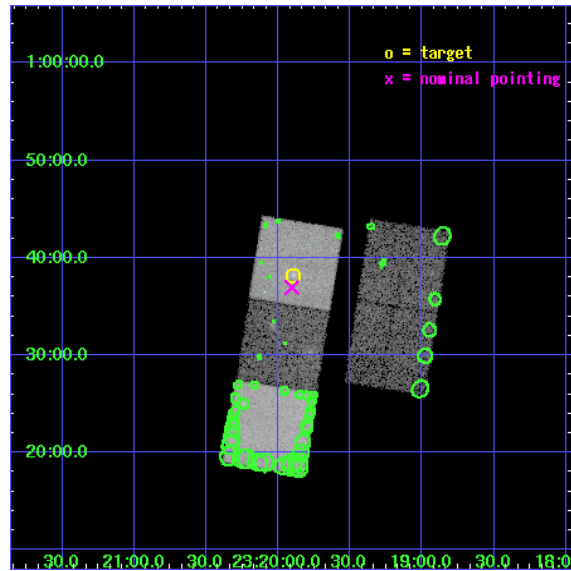
L2 Processing Date : Mar 31 2006

Contents

1	Front	2
2	OBI	3
2.1	OBI	3
2.1.1	Images	3
2.1.2	Bias	3
2.1.3	Parameters	4
2.1.4	Events	4
2.2	Compared Parameters	5
2.3	Aspect	6
2.4	Star Slots	9
2.4.1	Slot 3	9
2.4.2	Slot 4	10
2.4.3	Slot 5	11
2.4.4	Slot 6	12
2.4.5	Slot 7	13
2.5	FID Slots	14
2.5.1	Slot 0	14
2.5.2	Slot 1	15
2.5.3	Slot 2	16
3	Point Sources	17
A	Summary	18
A.1	Status	18
A.2	Comments	18

1 Front

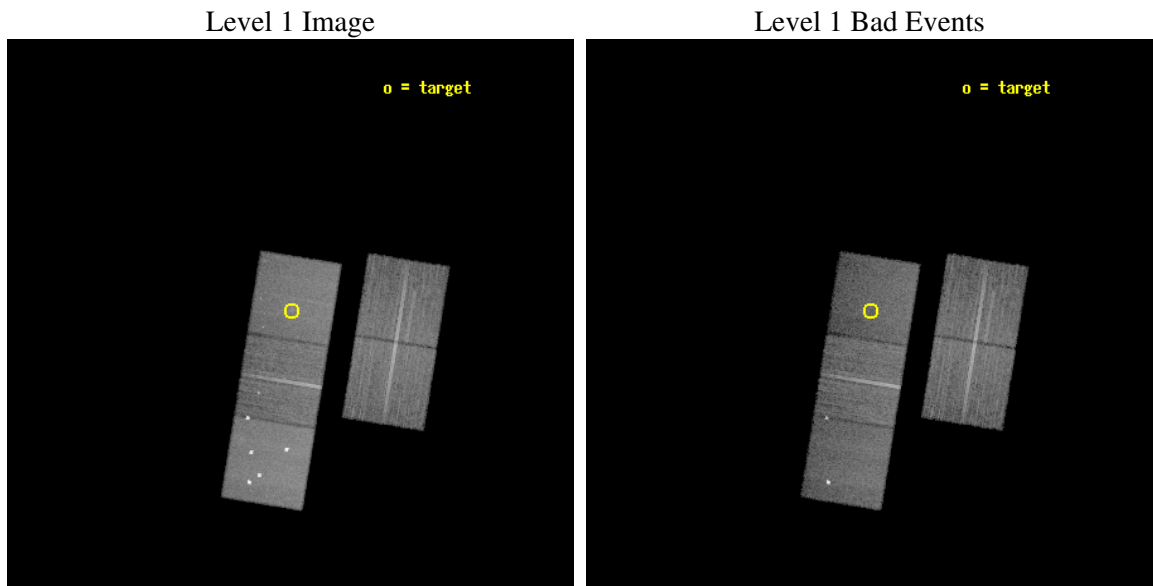
seq_num	800465
obs_id	7173
title	Cluster Strong Lensing at High Redshift
observer	Dr Michael Gladders
object	RCS2319.9+0038
dtcycle	0
cycle	P
ra_targ	349.974583
dec_targ	0.636556
ra_nom	349.97619818847
dec_nom	0.61587500101334
roll_nom	279.20494311103
revision	2
ontime	21176.099959284
livetime	20899.418623698
ontime2	21176.099959284
ontime3	21169.81800878
ontime5	21176.099959284
ontime6	21172.95897904
ontime7	21176.099959284
l2events	171764



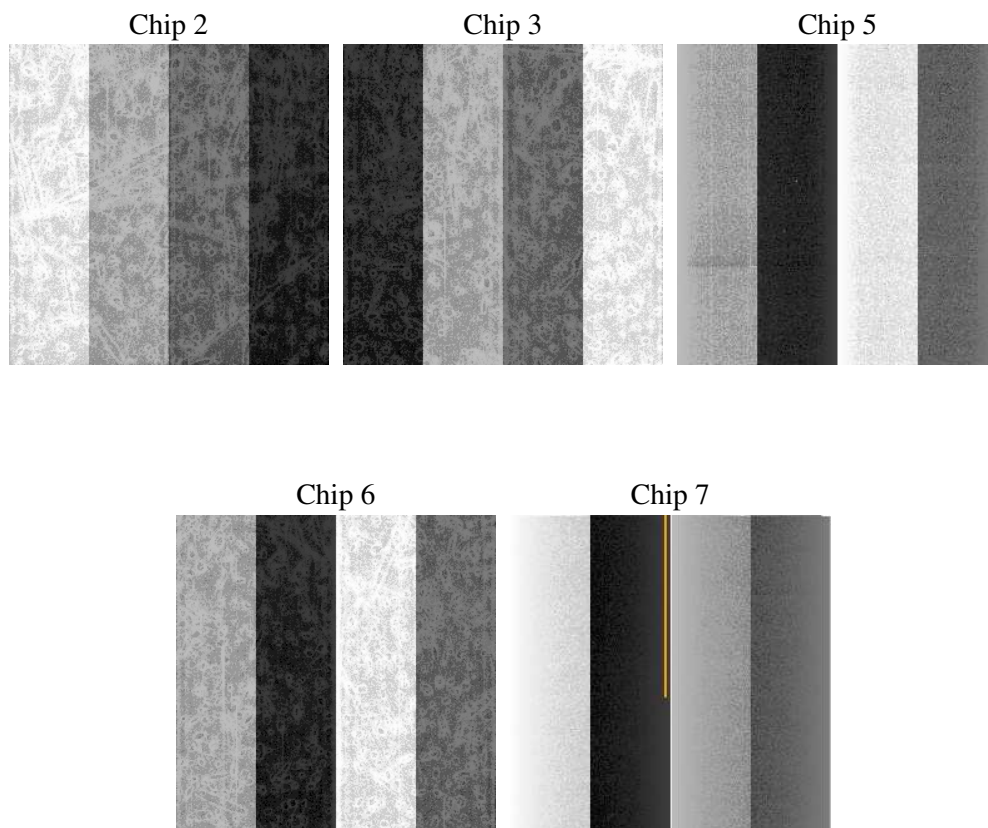
2 OBI

2.1 OBI

2.1.1 Images



2.1.2 Bias



2.1.3 Parameters

obi_num	0
ascdsver	7.6.7.1
caldsver	3.2.1
date	2006-03-31T15:31:53
revision	2

sched_exp_time	21000.000000
ontime	21308.619360656
ontime2	21308.619340777
ontime3	21302.337390274
ontime5	21308.619340777
ontime6	21305.478360534
ontime7	21308.619360656
l1events	732661

2.1.4 Events

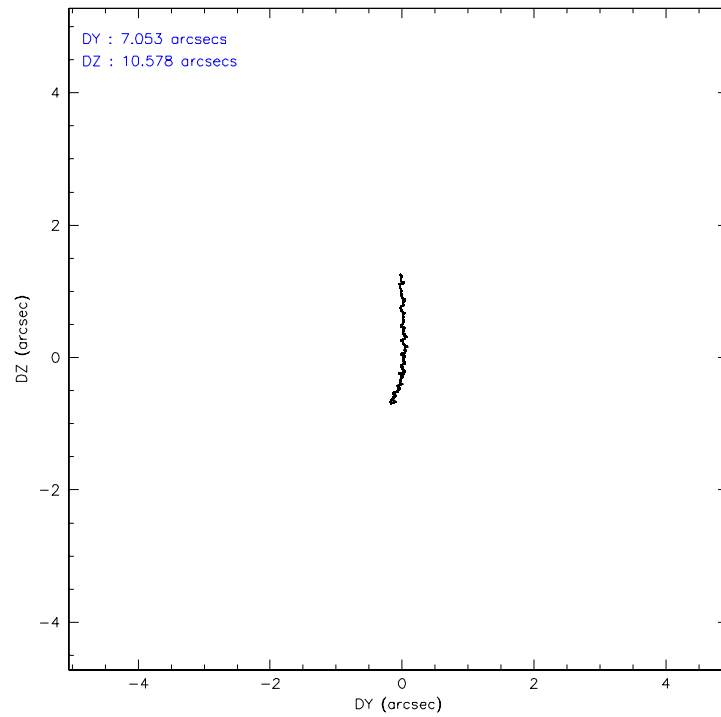
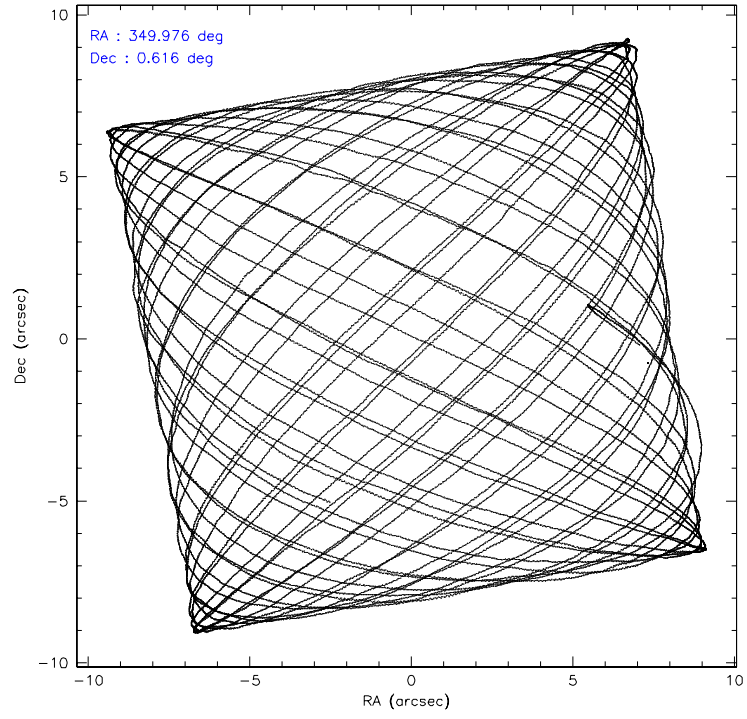
	ccd 2	ccd 3	ccd 5	ccd 6	ccd 7
level 1 events	132704	124391	199403	129829	146334
rejected events	120288	112616	99265	115132	85166
rejected %	90%	90%	49%	88%	58%

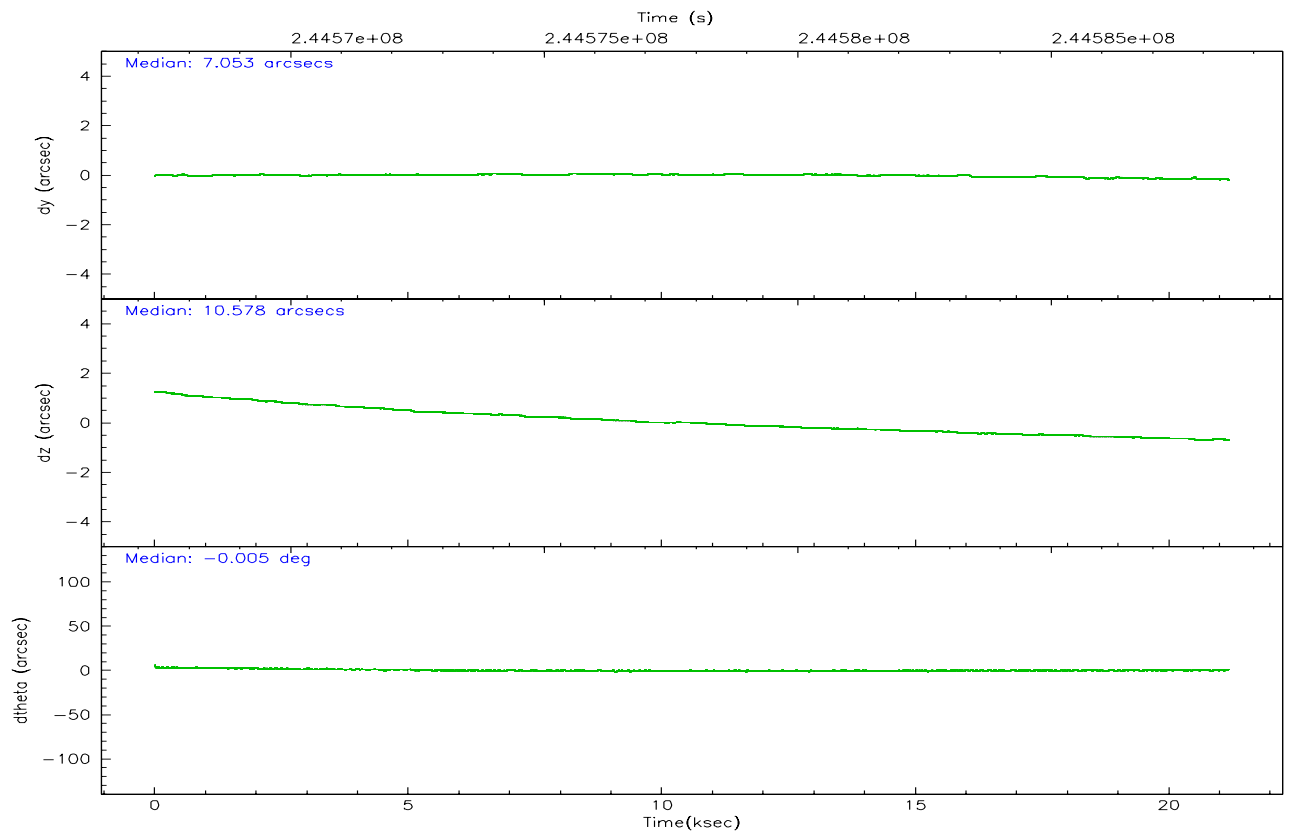
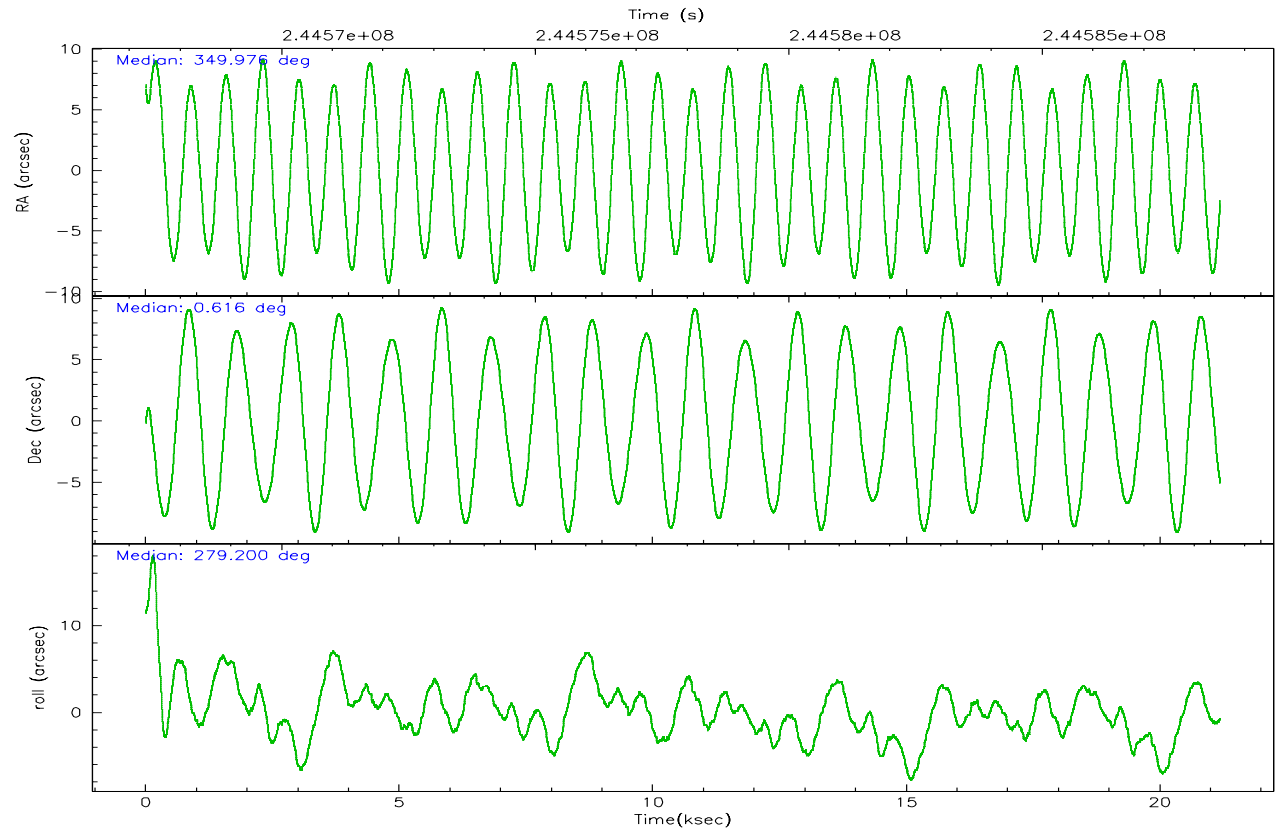
	ccd 2	ccd 3	ccd 5	ccd 6	ccd 7
grade 0 events	4355	4068	18339	5550	3685
	3%	3%	9%	4%	2%
grade 1 events	74	59	319	54	63
	0%	0%	0%	0%	0%
grade 2 events	3113	2652	28415	3116	15267
	2%	2%	14%	2%	10%
grade 3 events	1357	1410	2749	1609	3565
	1%	1%	1%	1%	2%
grade 4 events	1396	1384	2594	1570	3512
	1%	1%	1%	1%	2%
grade 5 events	4124	5145	11092	5349	10944
	3%	4%	5%	4%	7%
grade 6 events	2274	2342	48600	2942	35496
	1%	1%	24%	2%	24%
grade 7 events	116011	107331	87295	109639	73802
	87%	86%	43%	84%	50%

2.2 Compared Parameters

Parameter	Planned	Actual	Parameter	Planned	Actual
Instrument	ACIS	ACIS	Obspar format version number	6	6
Detector	ACIS-23567	ACIS-23567	Obspar file type	PREDICTED	ACTUAL
Grating	NONE	NONE	Obspar update status	NONE	UPDATED
Data mode	VFAINT	VFAINT	On-chip summing requested	N	N
Observation mode	POINTING	POINTING	Subarray requested	NONE	NONE
Pointing RA	349.958697	349.9761981884729	Alternating exposures requested	N	N
Pointing Dec	0.636726	0.6158750010133379	Primary exposure time	0.000000	3.1
Pointing Roll	279.048505	279.2049431110294			
SIM focus pos (mm)	-0.684267	-0.6828225247311905			
SIM defocus (mm)	0	0.001444936568705701			
SIM translation stage pos (mm)	-190.132523	-190.145094680475			
SIM translation stage offset (mm)	0	0.01257209746719923			
Observation start time	244567519.184000	244566458.46399			
Observation start date	2005-10-01T15:24:15	2005-10-01T15:07:38			
Observation end time	244588519.184000	244589745.95257			
Observation end date	2005-10-01T21:14:15	2005-10-01T21:35:45			
Read mode	TIMED	TIMED			

2.3 Aspect



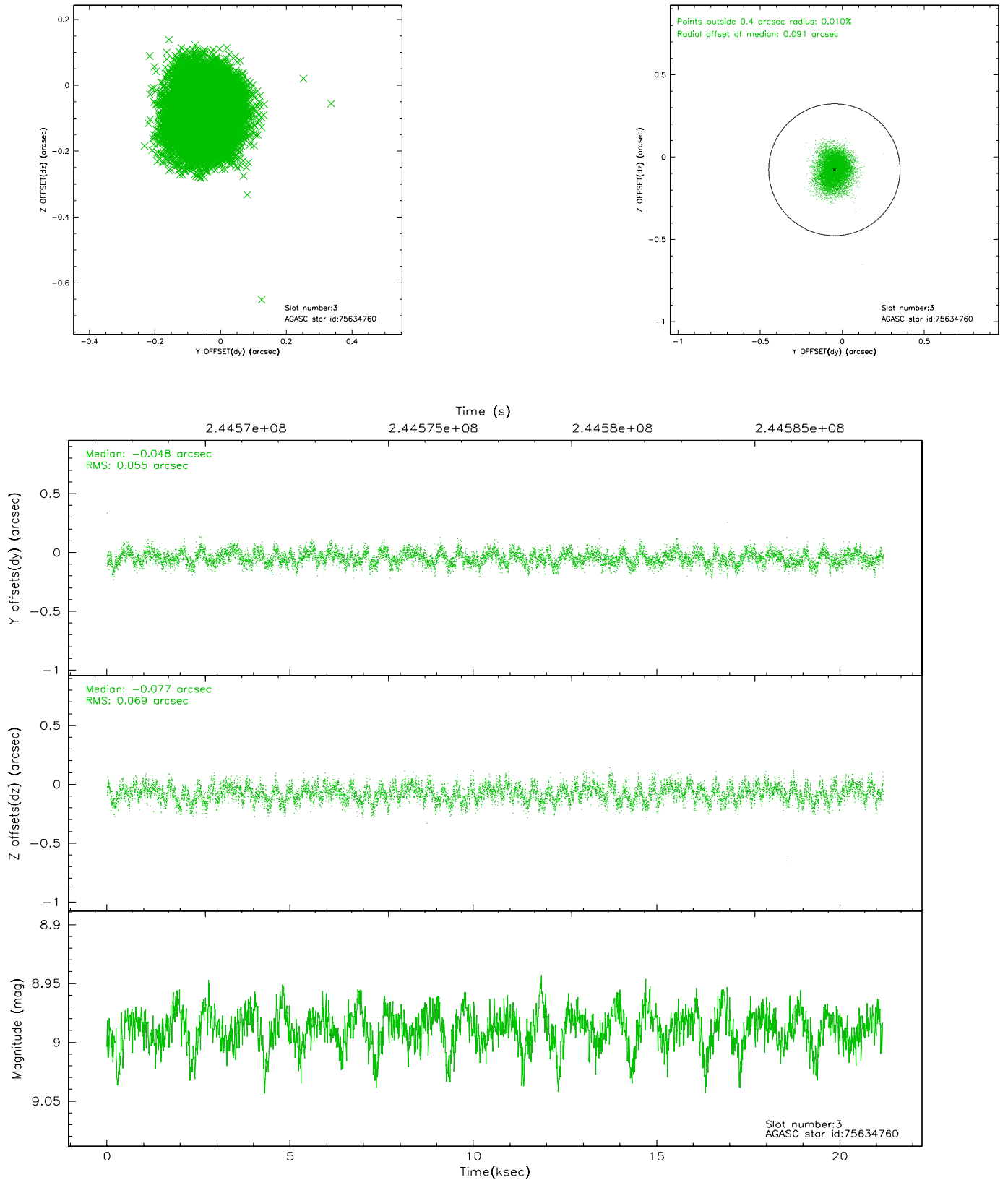


Slot Statistics

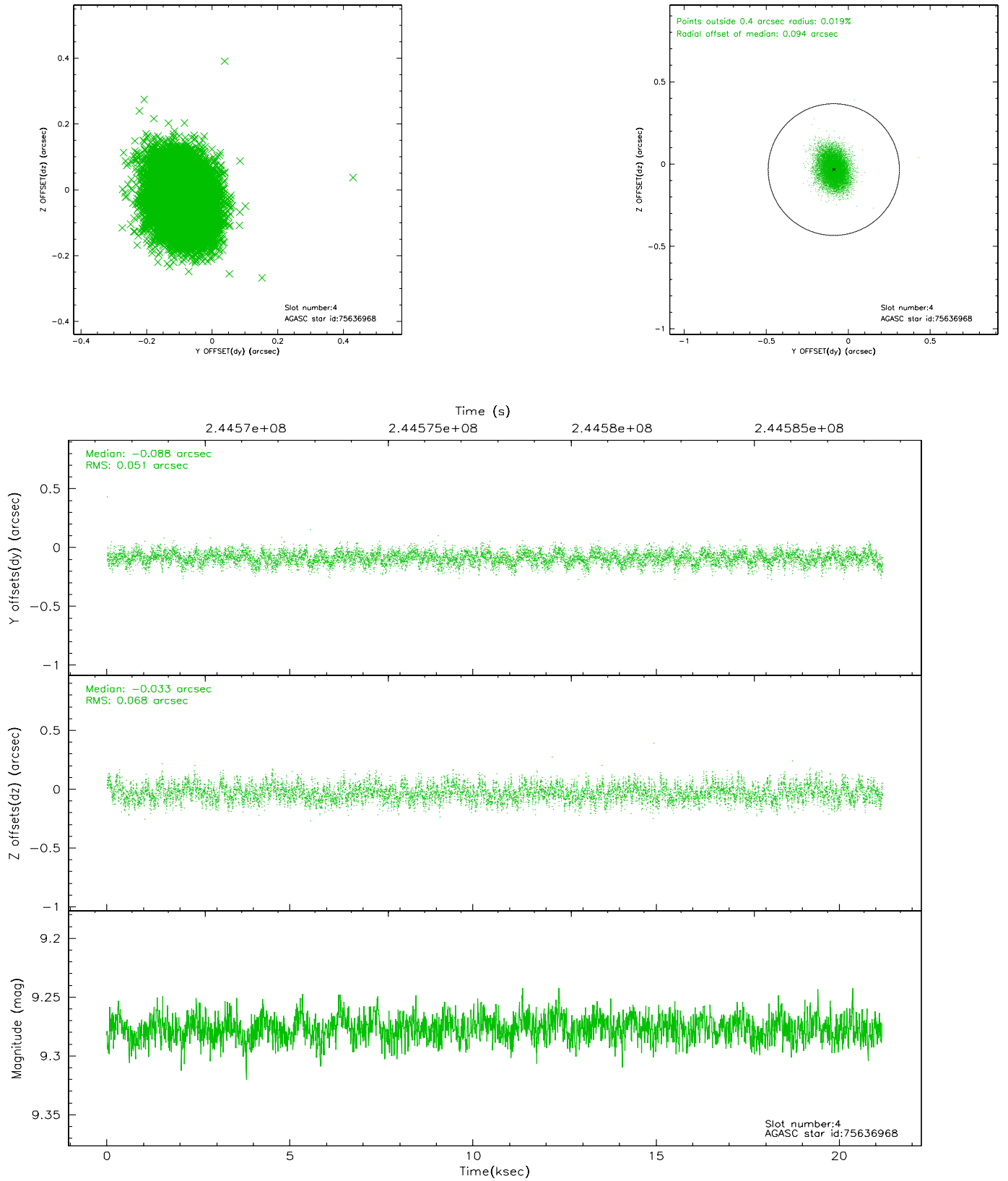
slot	status	id	mag	n_pts	med_dy	med_dz	dr1	dr2	ra	dec	mean_y	mean_z
0	FID	ACIS-S-2	7.10	5167	-0.047	-0.004	0.013	0.024	0.000000	0.000000	-759.80	-1731.83
1	FID	ACIS-S-4	7.21	5167	0.059	0.024	0.011	0.026	0.000000	0.000000	2153.47	176.57
2	FID	ACIS-S-5	7.23	5167	-0.043	-0.009	0.007	0.012	0.000000	0.000000	-1812.46	170.32
3	GUIDE	75634760	8.99	10329	-0.048	-0.077	0.095	0.148	349.528153	0.494791	261.25	-1610.85
4	GUIDE	75636968	9.28	10325	-0.088	-0.033	0.091	0.145	349.584767	0.524969	185.97	-1392.52
5	GUIDE	75765576	10.02	10316	0.036	0.037	0.127	0.209	350.147829	0.719056	-185.30	719.02
6	GUIDE	75769624	9.40	10331	0.018	0.114	0.099	0.162	350.180830	0.159527	1822.60	520.10
7	GUIDE	687220280	9.39	10328	0.084	-0.044	0.101	0.163	349.573474	-0.035729	2173.40	-1749.98

2.4 Star Slots

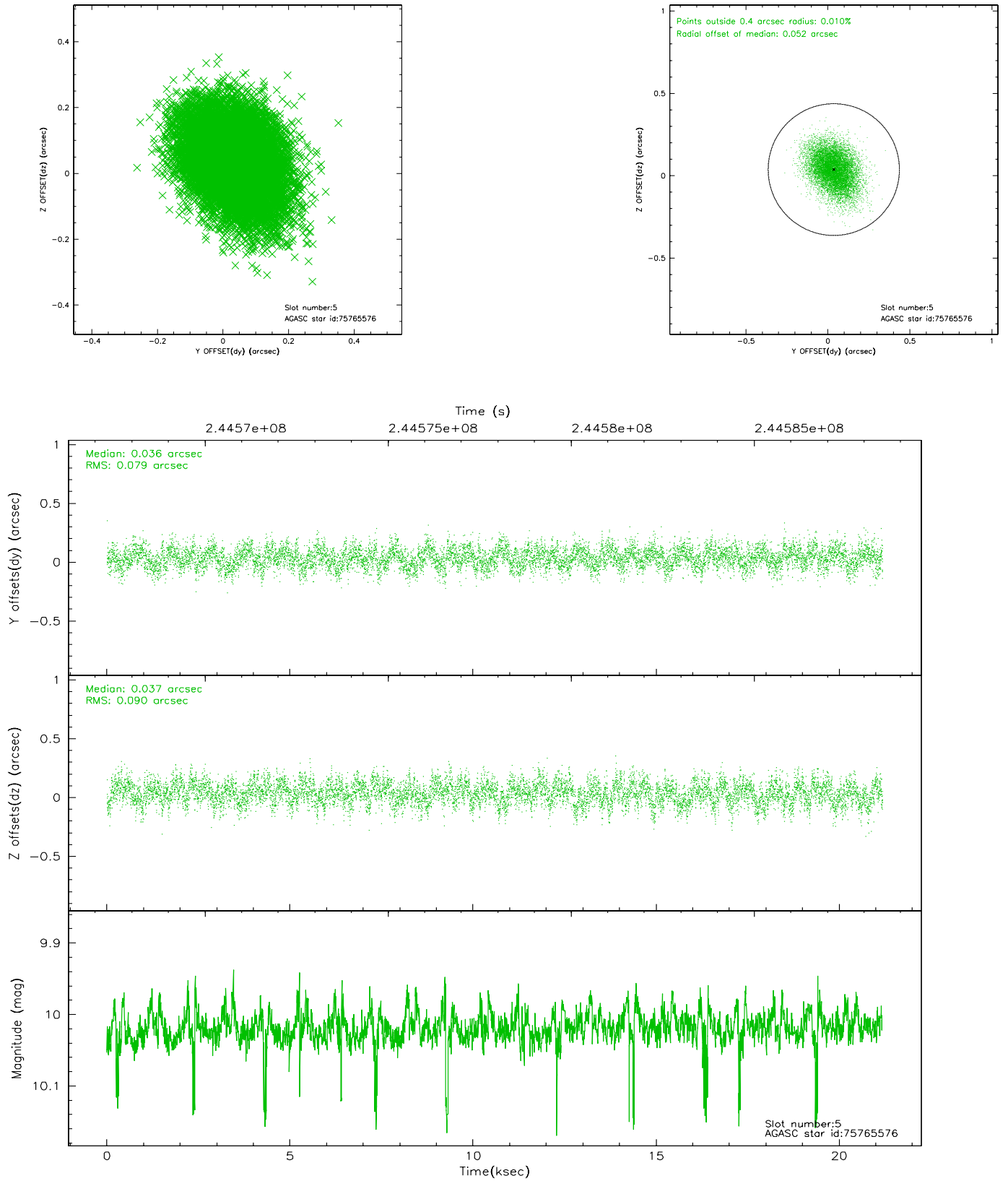
2.4.1 Slot 3



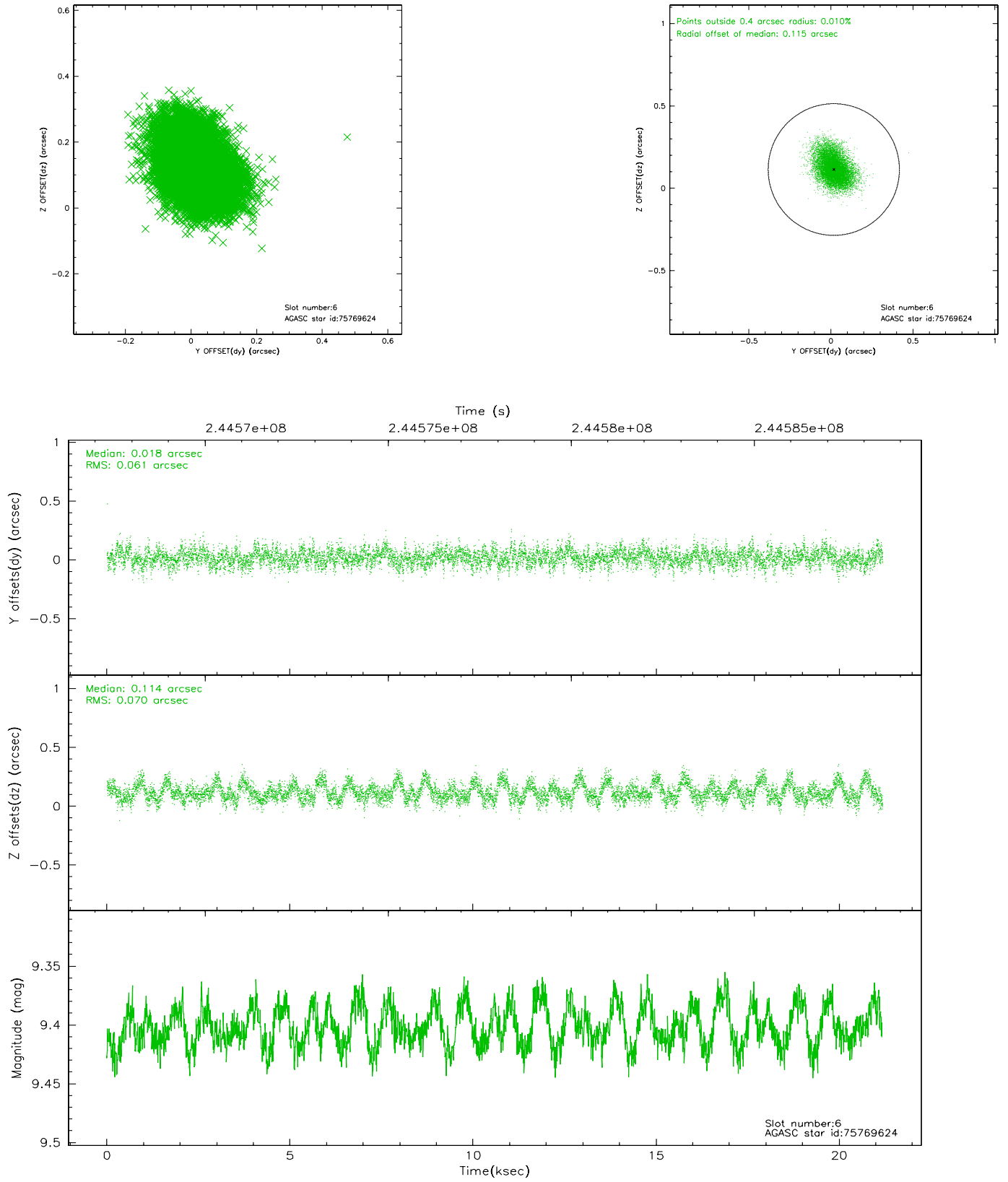
2.4.2 Slot 4



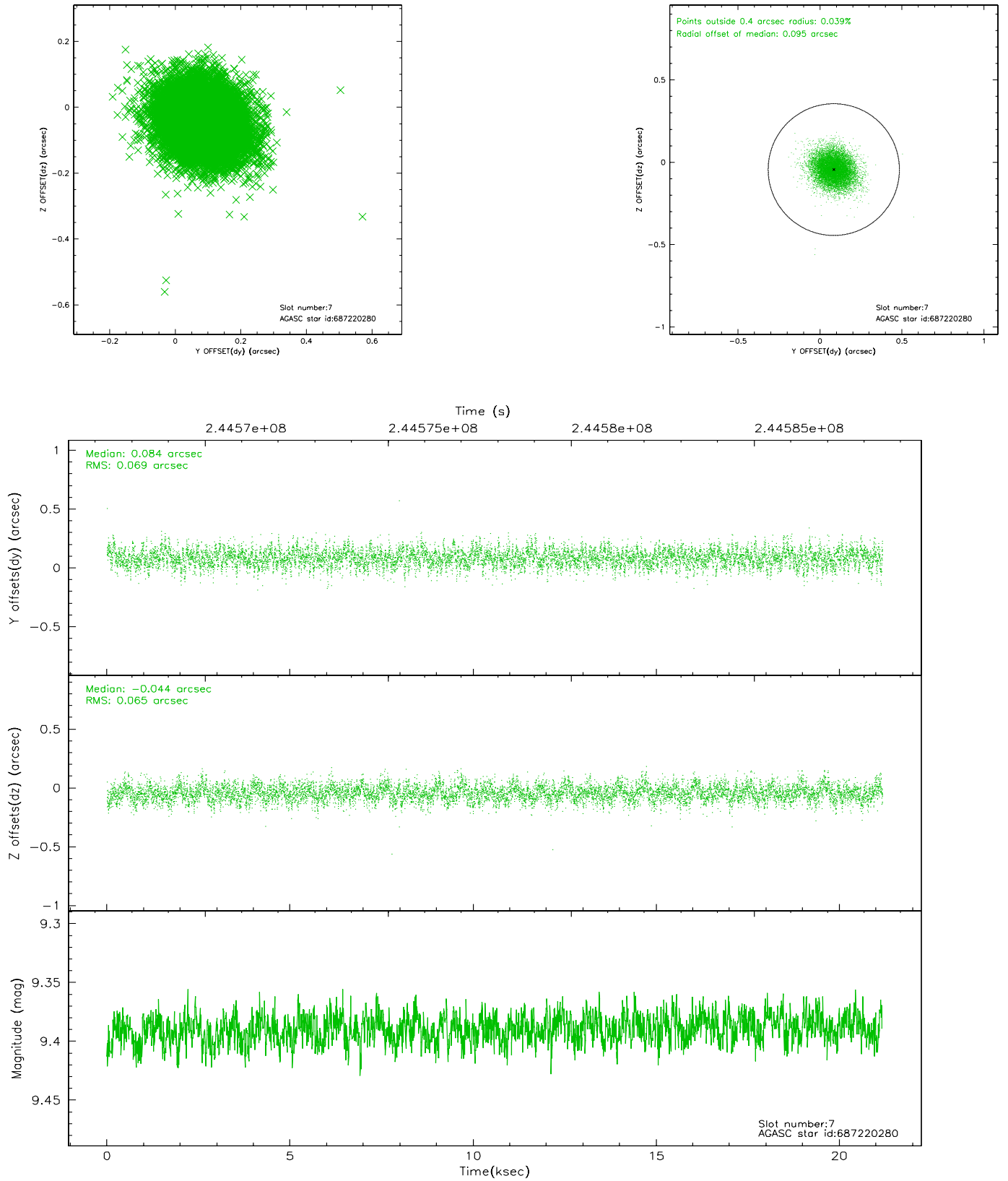
2.4.3 Slot 5



2.4.4 Slot 6

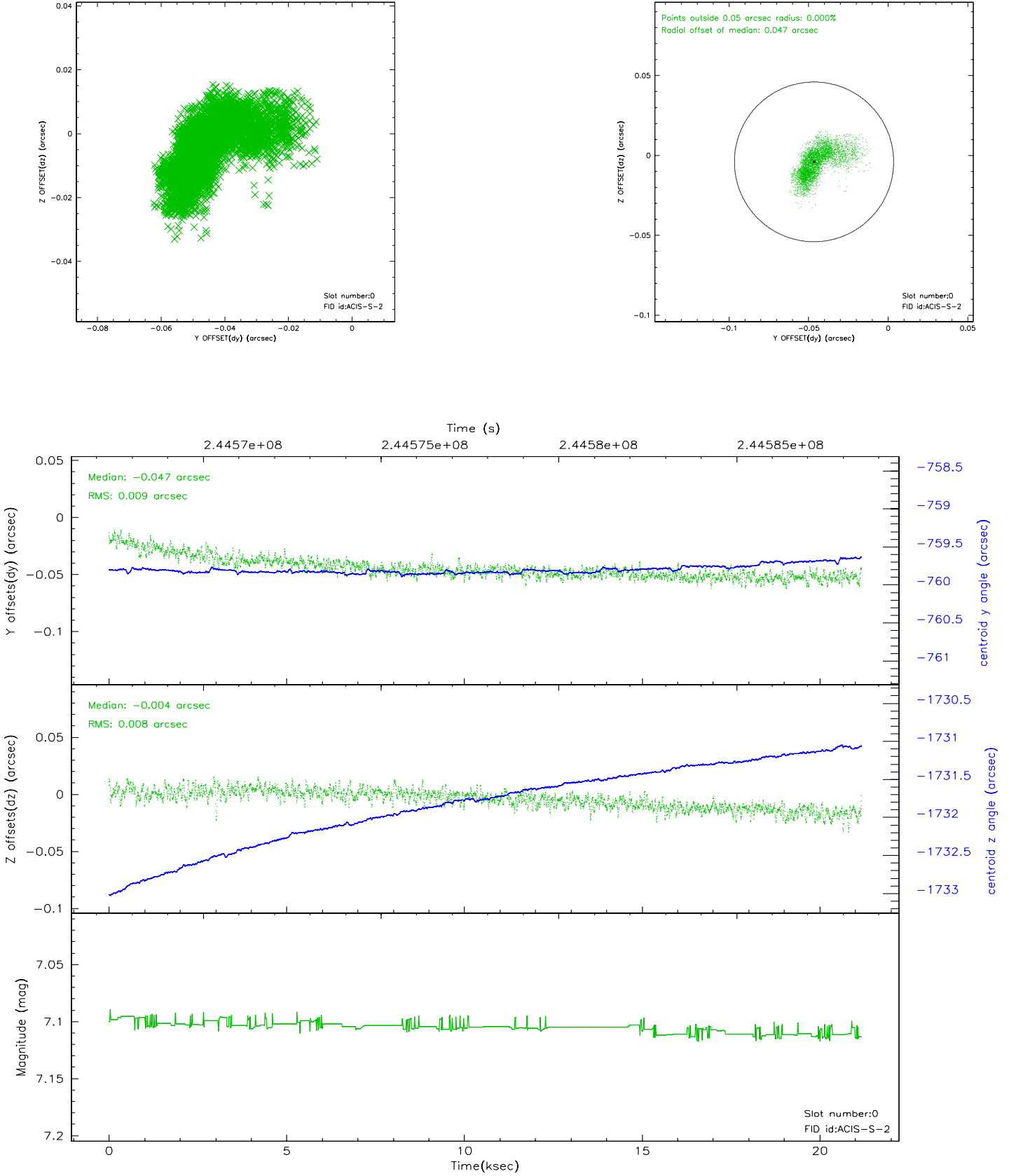


2.4.5 Slot 7

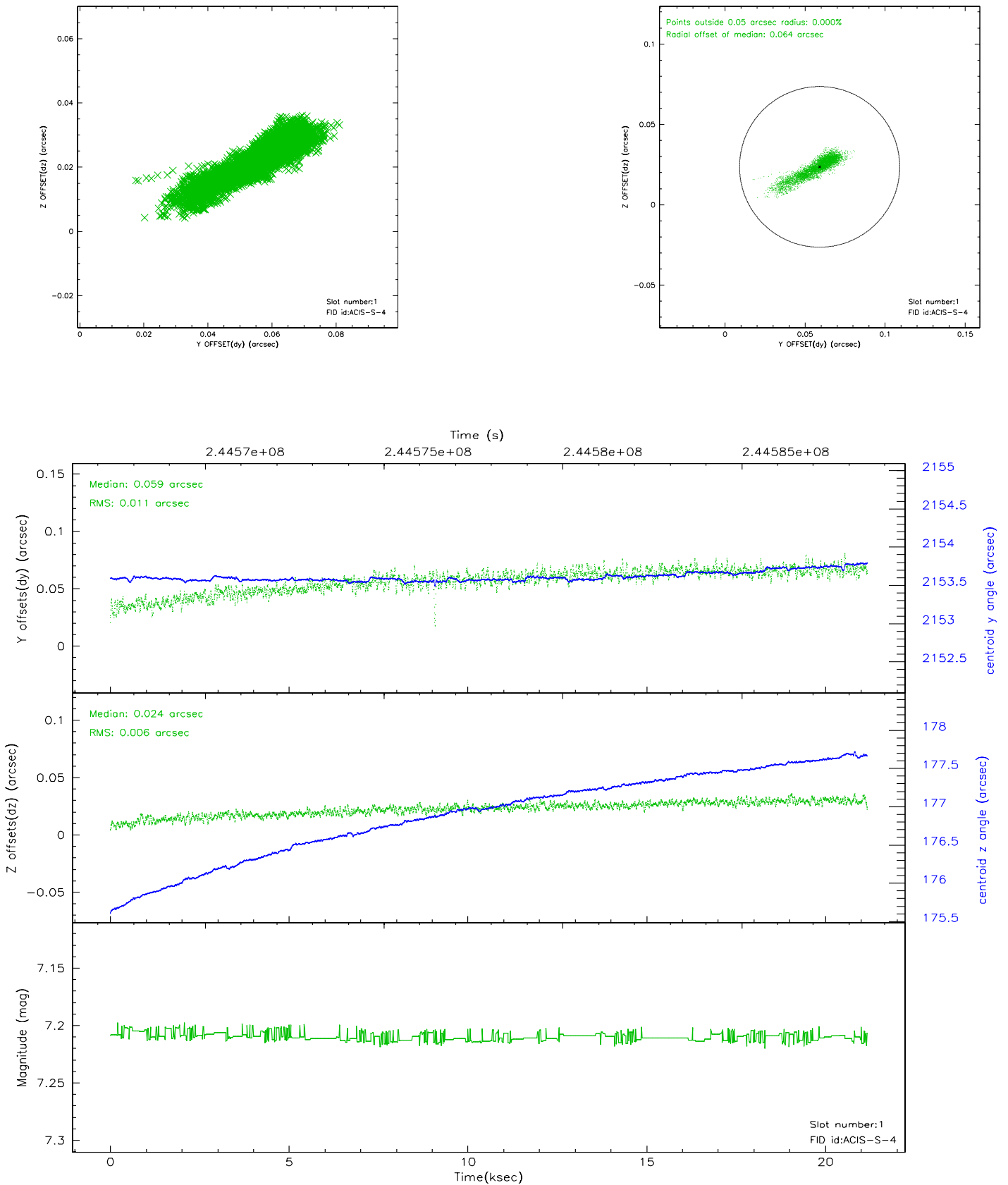


2.5 FID Slots

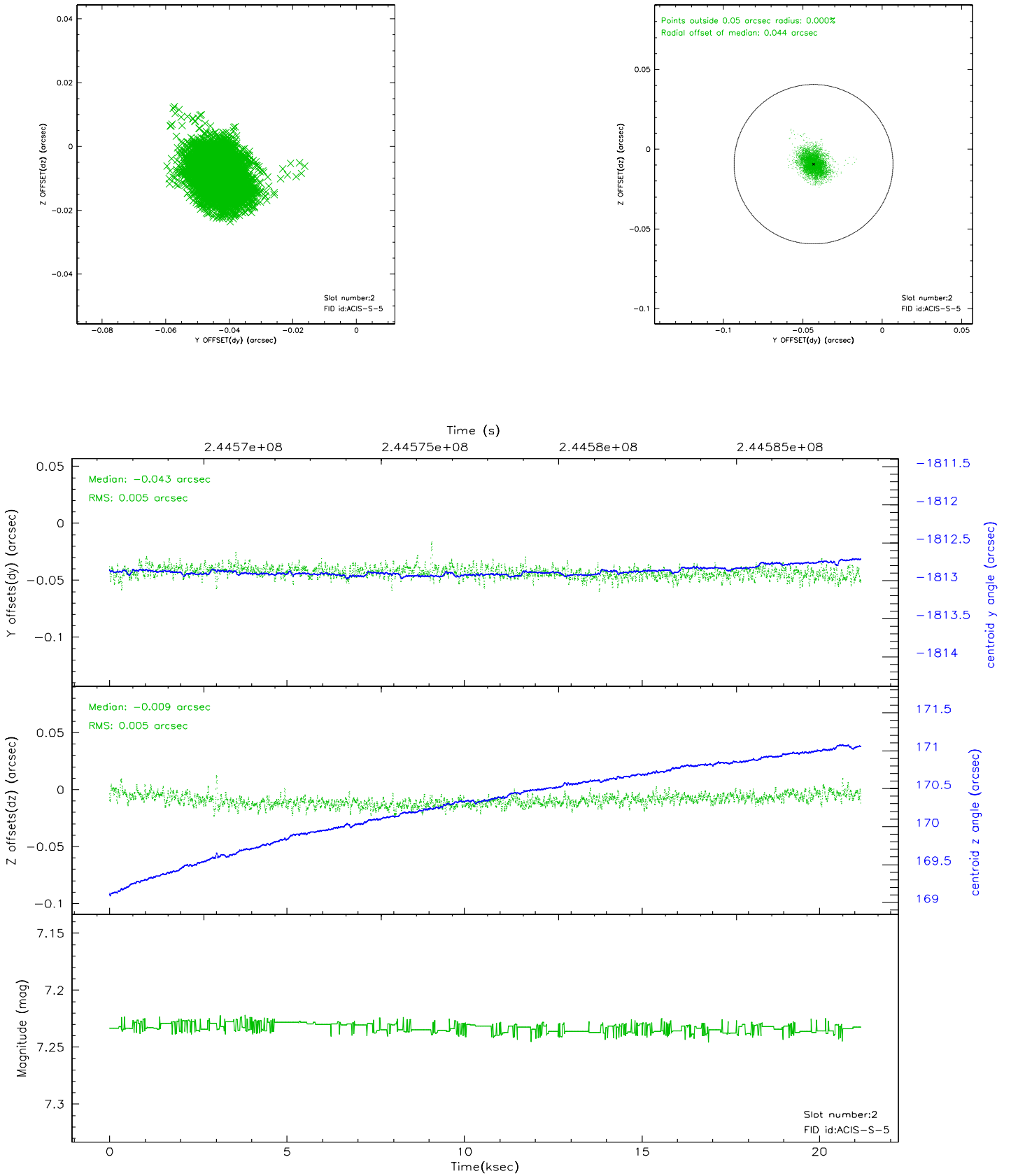
2.5.1 Slot 0



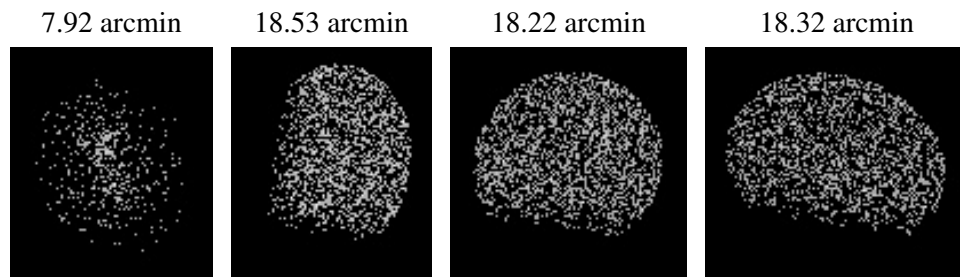
2.5.2 Slot 1



2.5.3 Slot 2



3 Point Sources



A Summary

A.1 Status

V&V Scientist	Beth Sundheim
V&V Date (YYYY-MM-DD)	2006.03.31
V&V Edition	1
V&V Disposition and Status	OK
V&V Charge Time	21.17609

A.2 Comments