

V&V Reference Report

L2 ASCDS Version : 7.6.7.1

Observation 6393 - L2 Version 002
Chandra X-Ray Center

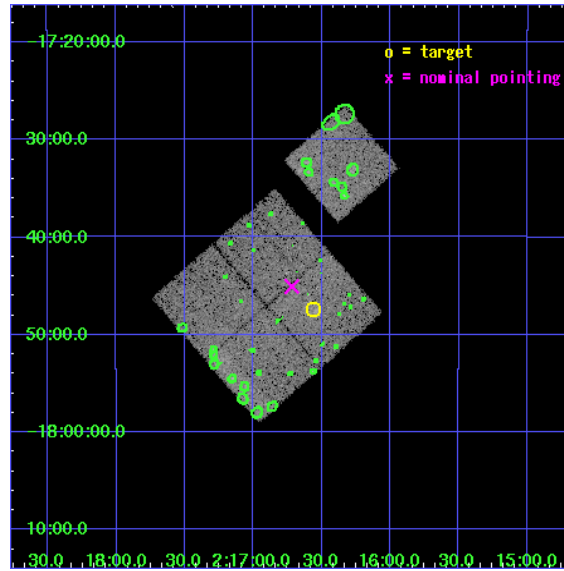
L2 Processing Date : Mar 31 2006

Contents

1	Front	2
2	OBI	3
2.1	OBI	3
2.1.1	Images	3
2.1.2	Bias	3
2.1.3	Parameters	4
2.1.4	Events	4
2.2	Compared Parameters	5
2.3	Aspect	6
2.4	Star Slots	9
2.4.1	Slot 3	9
2.4.2	Slot 4	10
2.4.3	Slot 5	11
2.4.4	Slot 6	12
2.4.5	Slot 7	13
2.5	FID Slots	14
2.5.1	Slot 0	14
2.5.2	Slot 1	15
2.5.3	Slot 2	16
3	Point Sources	17
A	Summary	18
A.1	Status	18
A.2	Comments	18

1 Front

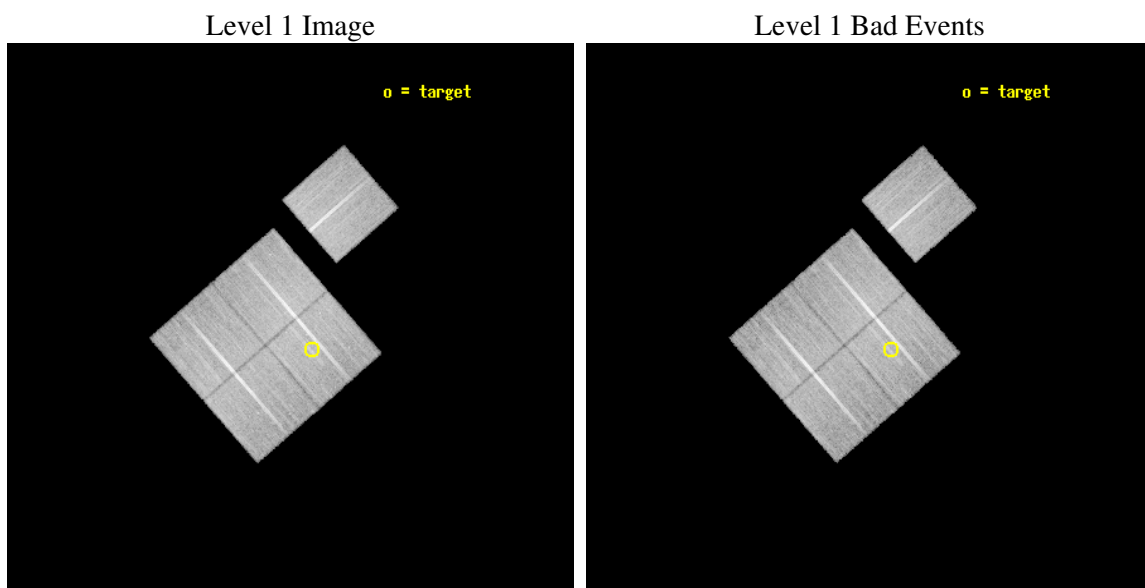
seq_num	800473
obs_id	6393
title	DARK ENERGY WITH X-RAY CLUSTERS: CHANDRA OBSERVATIONS OF 41 HIGH-REDSHIFT CLUSTERS FROM THE 400 deg^2 ROSAT PSPC SURVEY
observer	Dr Alexey Vikhlinin
object	cl0216-1747
dtcycle	0
cycle	P
ra_targ	34.140417
dec_targ	-17.790833
ra_nom	34.179508609361
dec_nom	-17.751305780802
roll_nom	48.820401191218
revision	2
ontime	26997.735947222
livetime	26644.990651627
ontime0	27007.158908099
ontime1	27004.017907858
ontime2	27000.876887769
ontime3	26997.735947222
ontime6	27000.876887739
l2events	71877



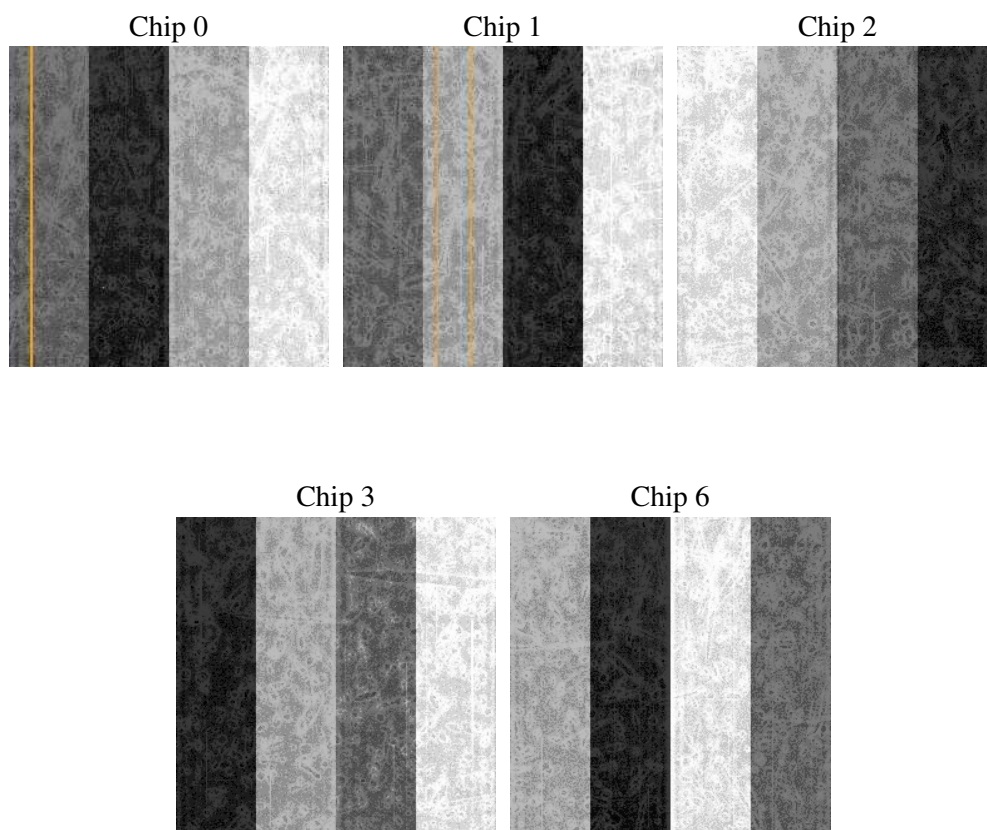
2 OBI

2.1 OBI

2.1.1 Images



2.1.2 Bias



2.1.3 Parameters

obi_num	0
ascdsver	7.6.7.1
caldbver	3.2.1
date	2006-03-31T17:10:36
revision	2

sched_exp_time	26950.000000
ontime	27000.178022683
ontime0	27009.60098356
ontime1	27006.459983319
ontime2	27003.31896323
ontime3	27000.178022683
ontime6	27003.3189632
l1events	838961

2.1.4 Events

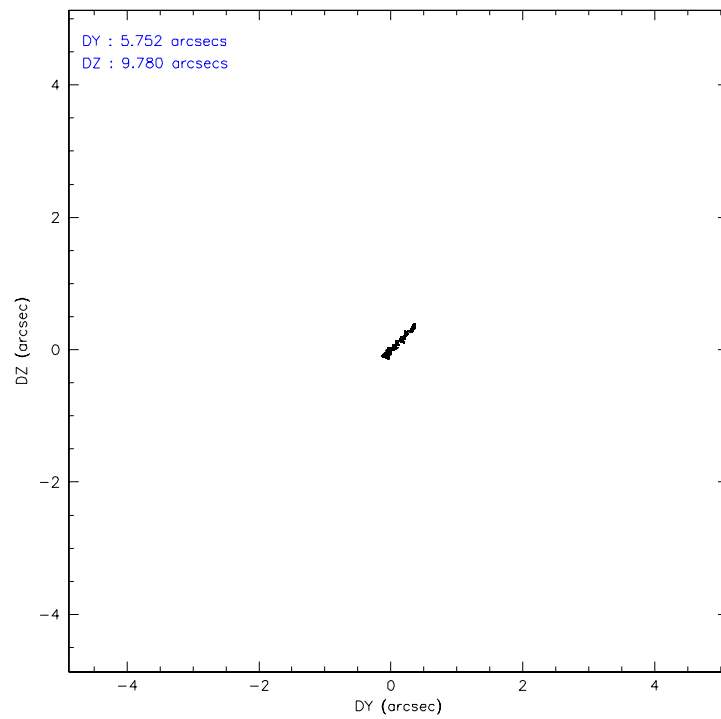
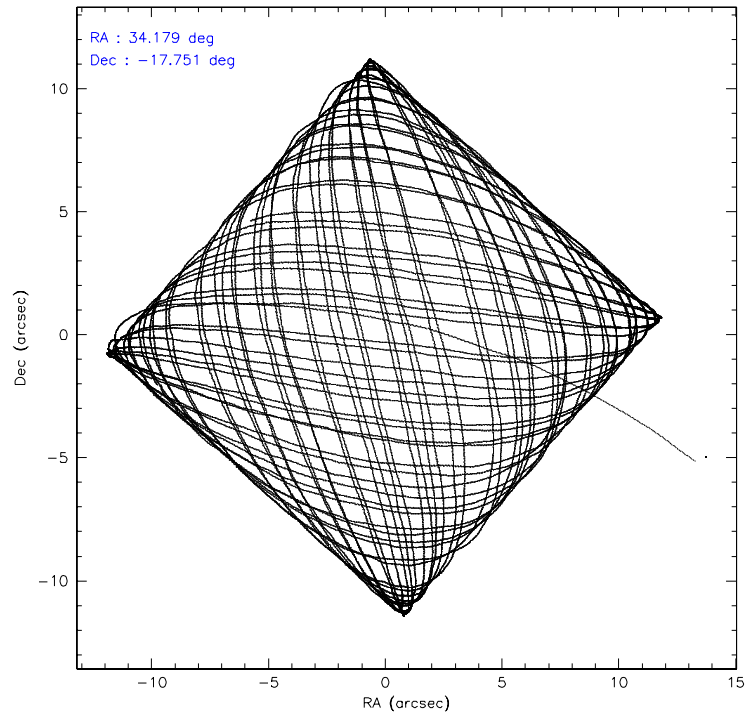
	ccd 0	ccd 1	ccd 2	ccd 3	ccd 6
level 1 events	161869	158510	175716	171806	171060
rejected events	145406	139258	159292	155317	153449
rejected %	89%	87%	90%	90%	89%

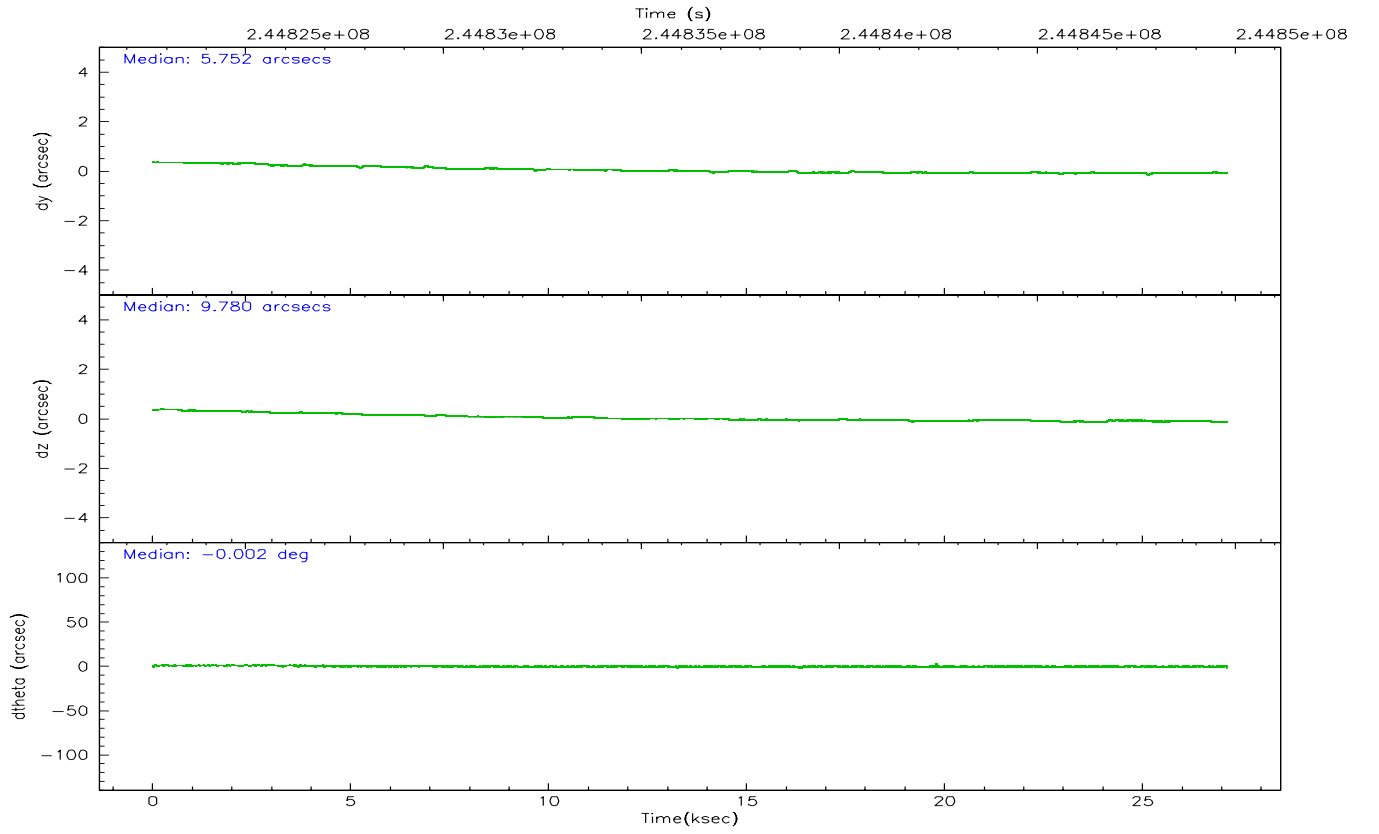
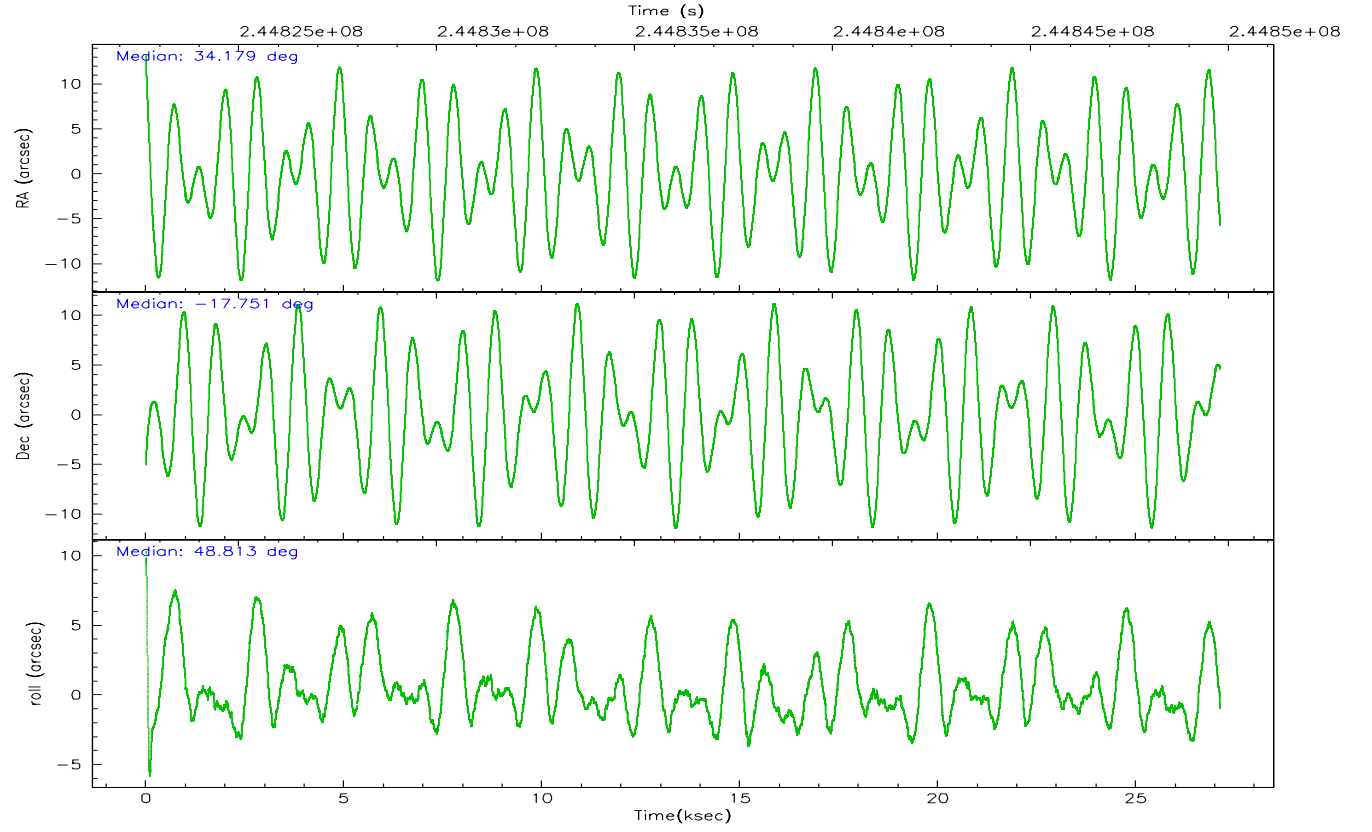
	ccd 0	ccd 1	ccd 2	ccd 3	ccd 6
grade 0 events	5568	7014	5991	6161	6142
	3%	4%	3%	3%	3%
grade 1 events	85	87	80	93	66
	0%	0%	0%	0%	0%
grade 2 events	3963	4287	3856	3522	3785
	2%	2%	2%	2%	2%
grade 3 events	1889	2076	1768	1817	1999
	1%	1%	1%	1%	1%
grade 4 events	1712	2095	1803	1834	1924
	1%	1%	1%	1%	1%
grade 5 events	5933	6592	5476	6953	6993
	3%	4%	3%	4%	4%
grade 6 events	3331	3783	3010	3158	3762
	2%	2%	1%	1%	2%
grade 7 events	139388	132576	153732	148268	146389
	86%	83%	87%	86%	85%

2.2 Compared Parameters

Parameter	Planned	Actual	Parameter	Planned	Actual
Instrument	ACIS	ACIS	Obspar format version number	6	6
Detector	ACIS-01236	ACIS-01236	Obspar file type	PREDICTED	ACTUAL
Grating	NONE	NONE	Obspar update status	NONE	UPDATED
Data mode	VFAINT	VFAINT	On-chip summing requested	N	N
Observation mode	POINTING	POINTING	Subarray requested	NONE	NONE
Pointing RA	34.174055	34.17950860936145	Alternating exposures requested	N	N
Pointing Dec	-17.778182	-17.75130578080212	Primary exposure time	0.000000	3.1
Pointing Roll	48.610048	48.82040119121816			
SIM focus pos (mm)	-0.782348	-0.7809083437167272			
SIM defocus (mm)	0	0.001439871863259334			
SIM translation stage pos (mm)	-225.840463	-225.8433433320239			
SIM translation stage offset (mm)	-7.752	-7.749109670905796			
Observation start time	244822844.184000	244821766.50074			
Observation start date	2005-10-04T14:19:40	2005-10-04T14:02:46			
Observation end time	244849794.184000	244851137.36459			
Observation end date	2005-10-04T21:48:50	2005-10-04T22:12:17			
Read mode	TIMED	TIMED			

2.3 Aspect



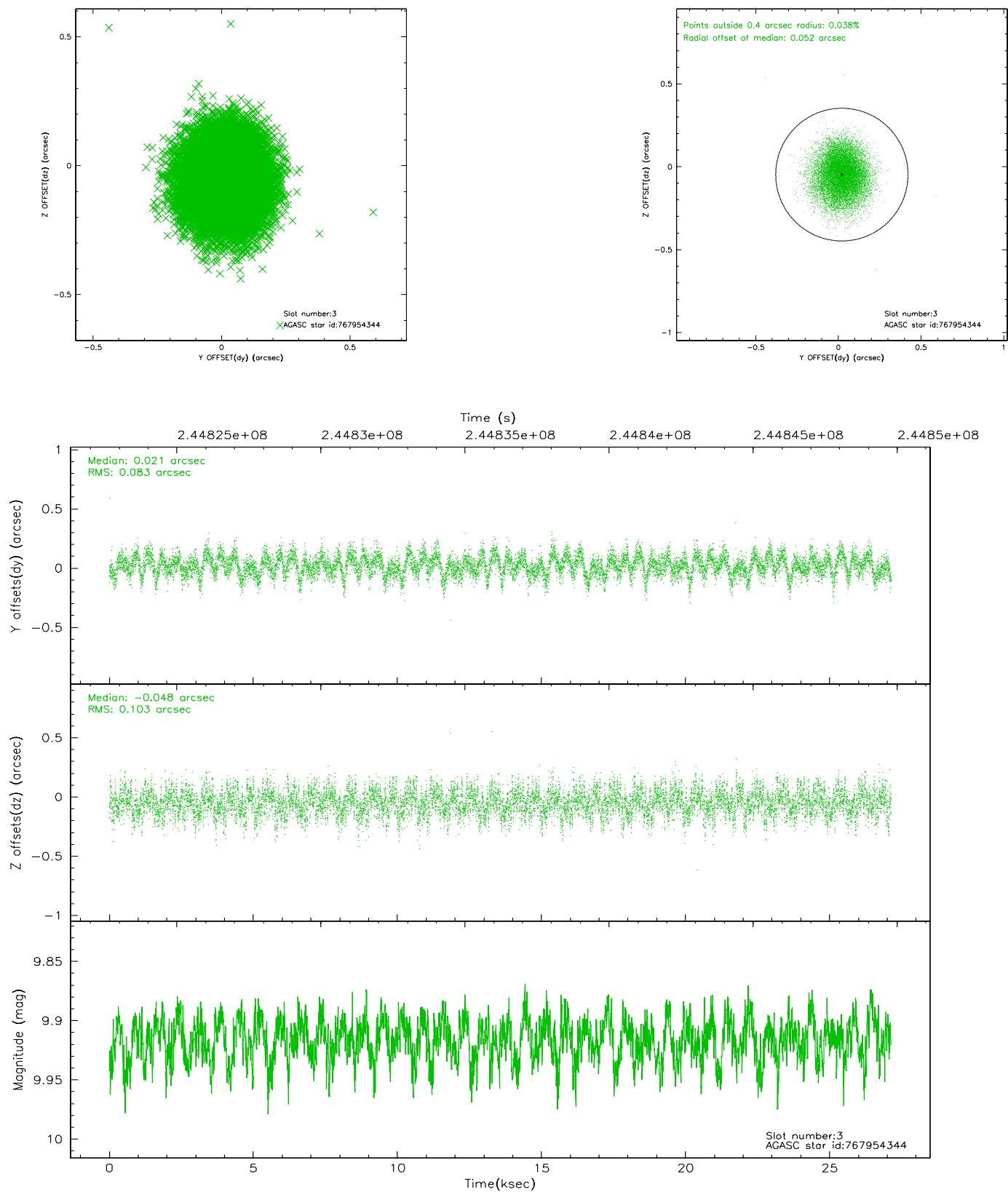


Slot Statistics

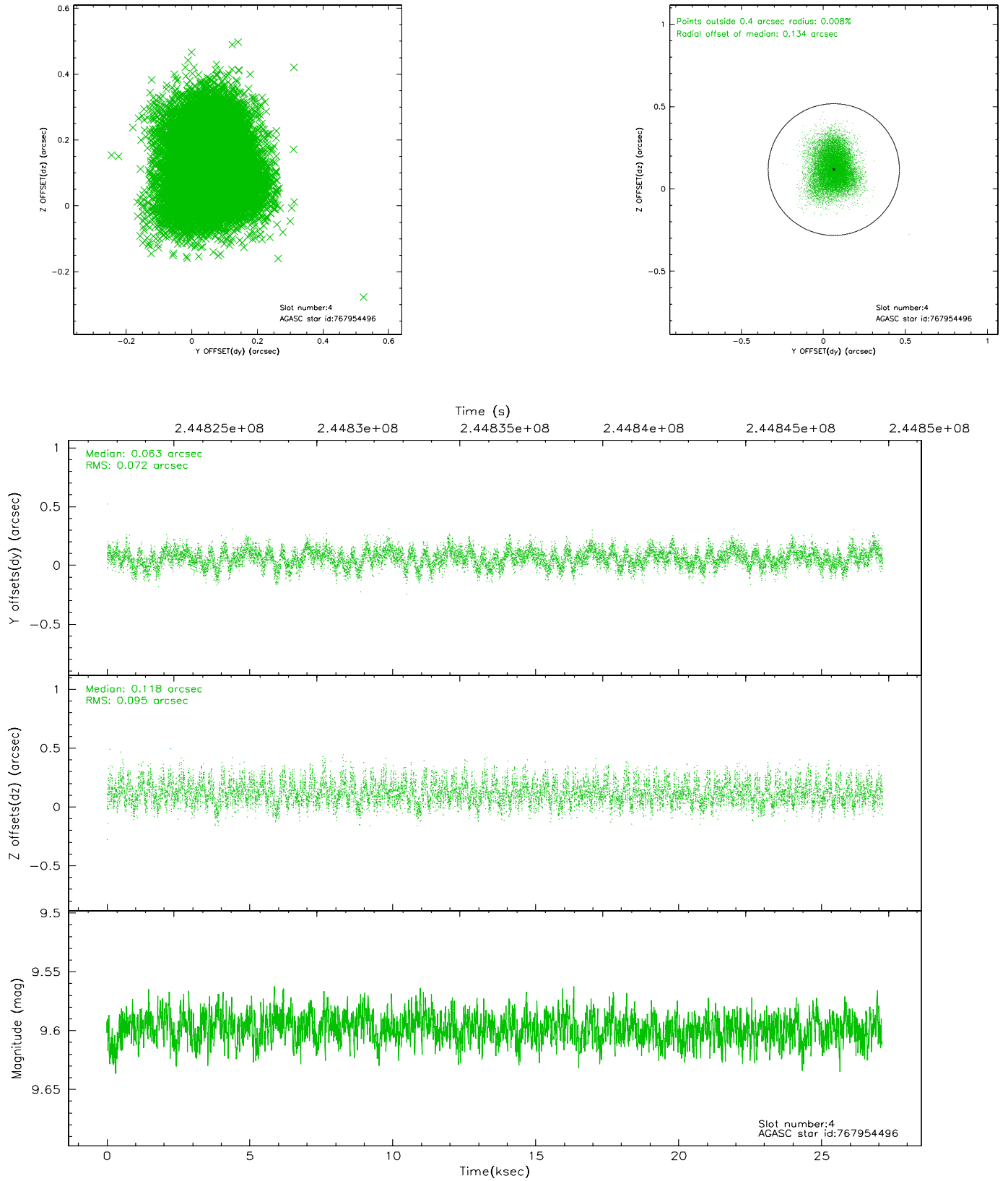
slot	status	id	mag	n_pts	med_dy	med_dz	dr1	dr2	ra	dec	mean_y	mean_z
0	FID	ACIS-I-1	7.24	6612	0.083	-0.071	0.008	0.015	0.000000	0.000000	933.85	-992.44
1	FID	ACIS-I-5	7.22	6614	-0.230	0.074	0.008	0.013	0.000000	0.000000	-1814.52	905.11
2	FID	ACIS-I-6	7.26	6614	0.056	0.068	0.009	0.017	0.000000	0.000000	399.25	1549.73
3	GUIDE	767954344	9.92	13220	0.021	-0.048	0.142	0.223	34.586205	-18.281873	-429.37	-2256.88
4	GUIDE	767954496	9.60	13214	0.063	0.118	0.127	0.203	34.611505	-18.207511	-171.28	-2145.34
5	GUIDE	767955344	10.14	13220	0.012	0.052	0.158	0.250	34.625163	-17.912842	656.87	-1480.91
6	GUIDE	767955440	9.81	13218	-0.151	-0.094	0.136	0.216	34.470038	-17.879304	397.18	-1002.02
7	GUIDE	767957440	9.16	13220	0.057	-0.031	0.083	0.133	33.627958	-17.789270	-1269.26	1375.78

2.4 Star Slots

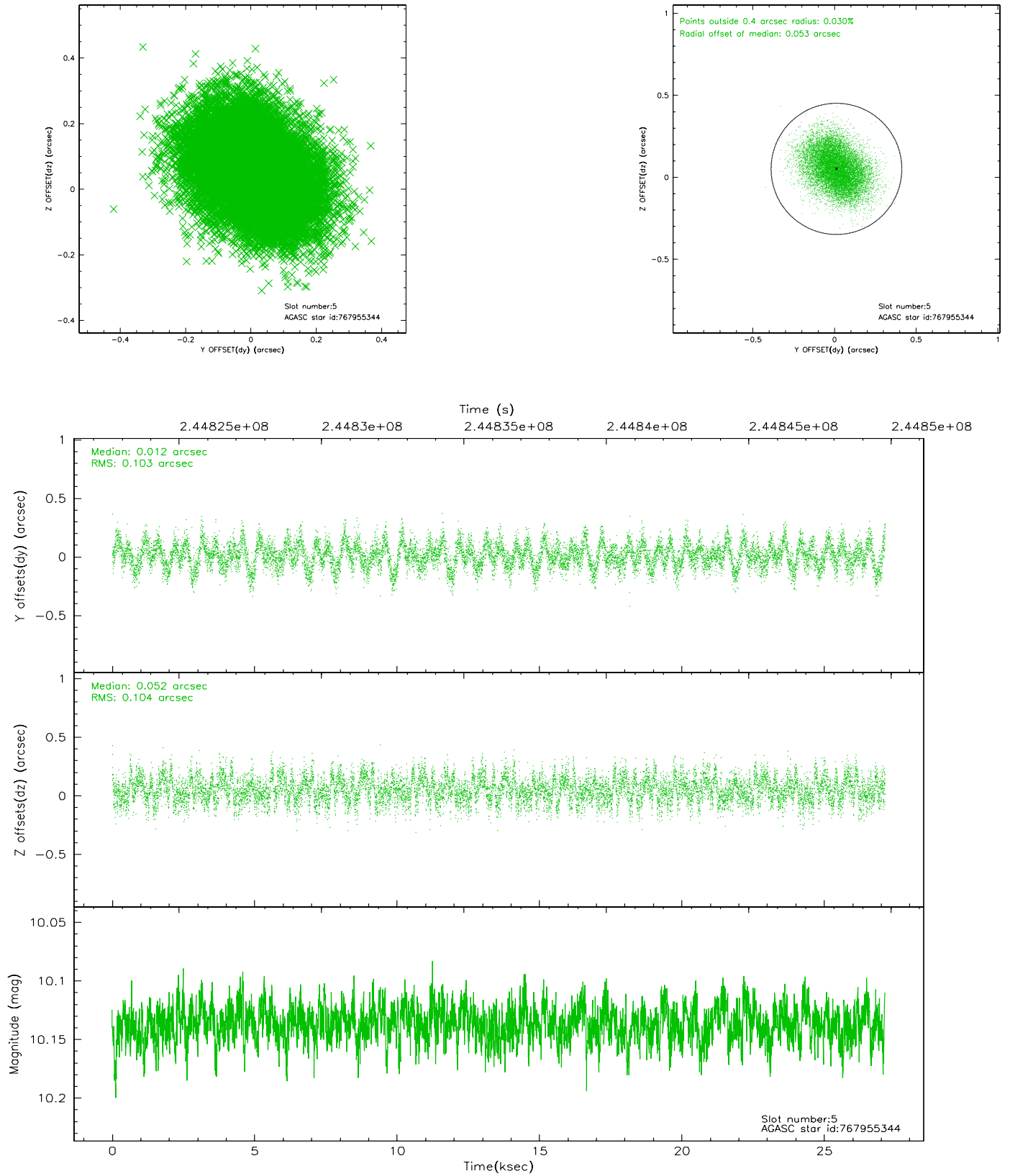
2.4.1 Slot 3



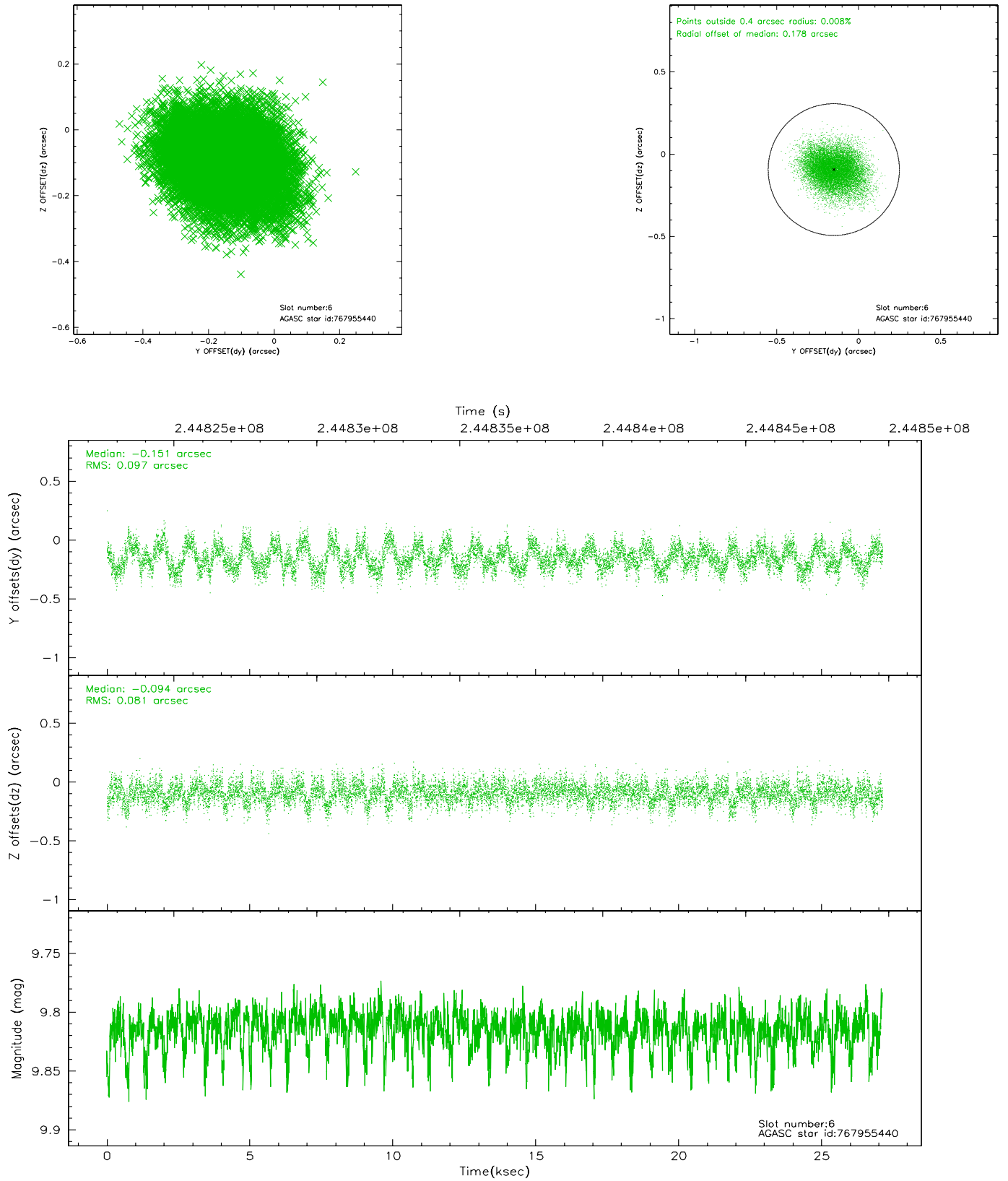
2.4.2 Slot 4



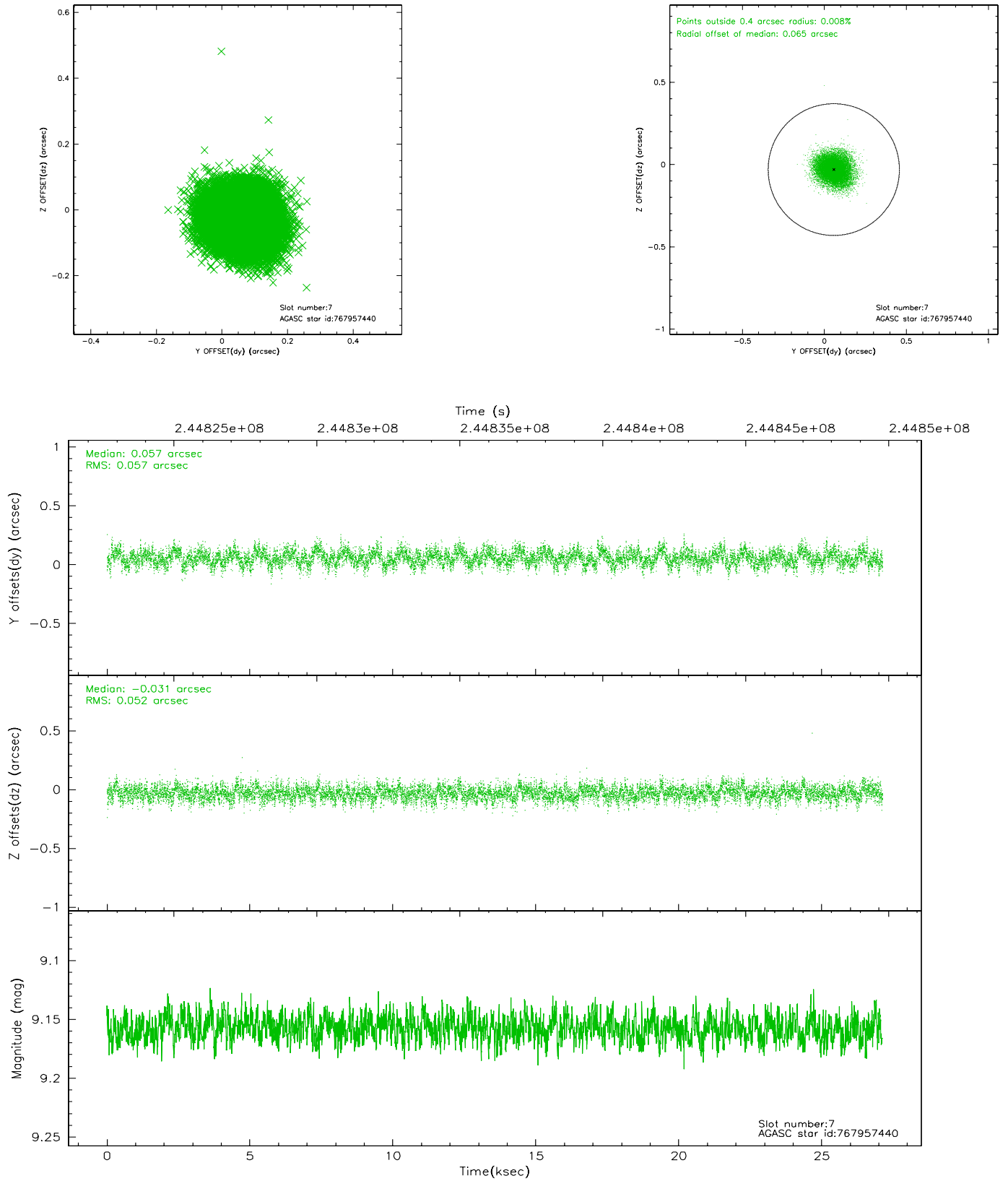
2.4.3 Slot 5



2.4.4 Slot 6

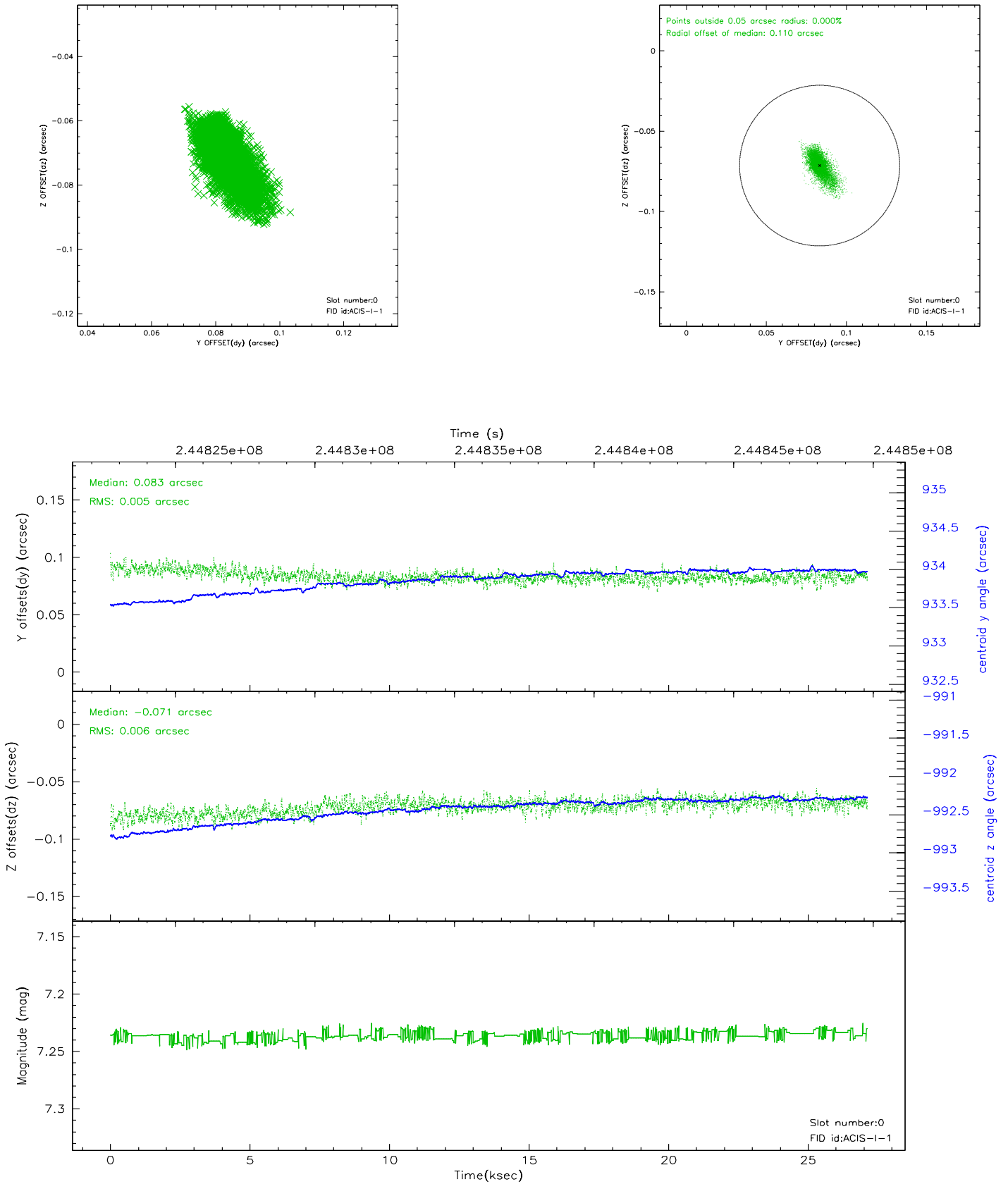


2.4.5 Slot 7

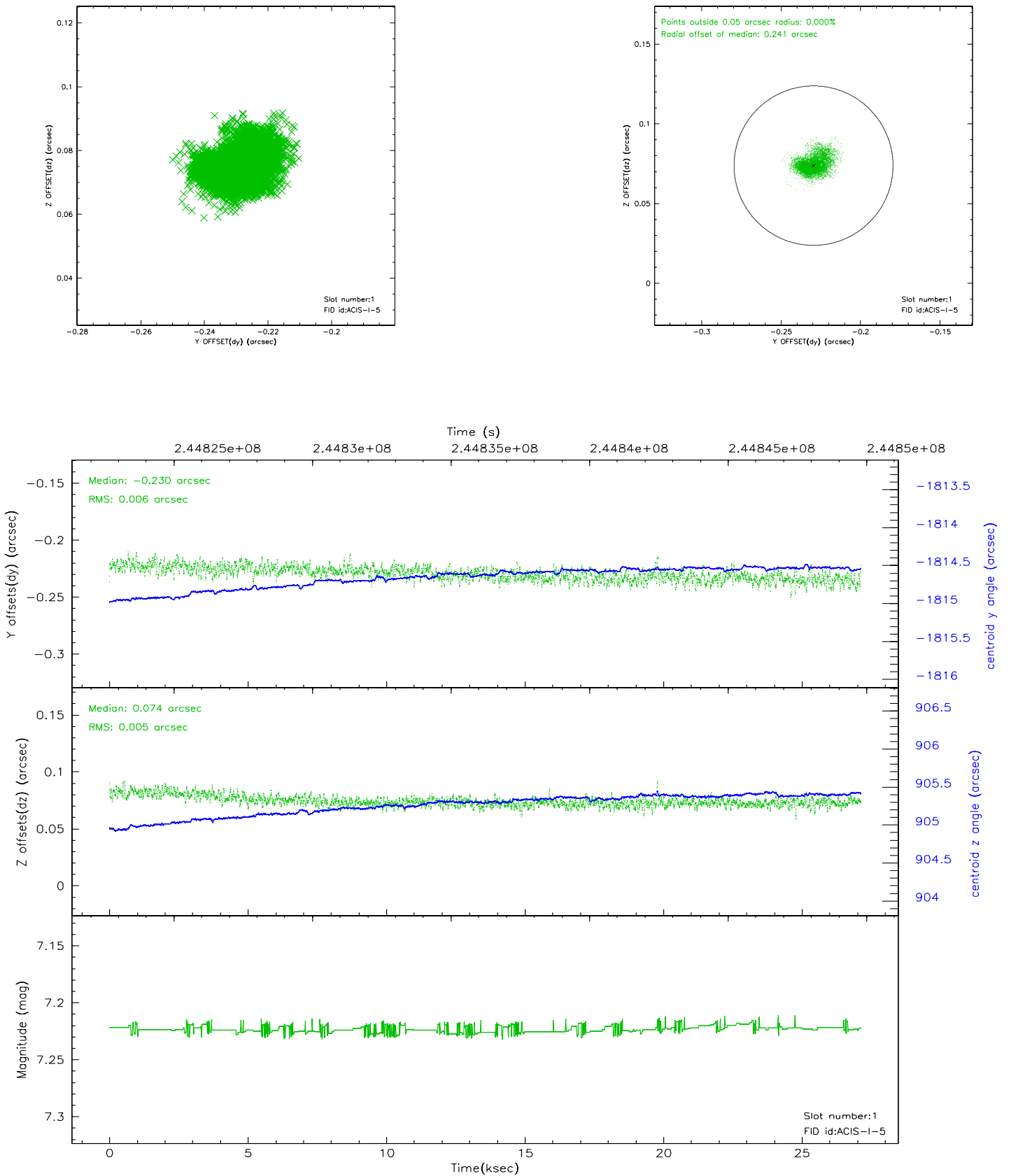


2.5 FID Slots

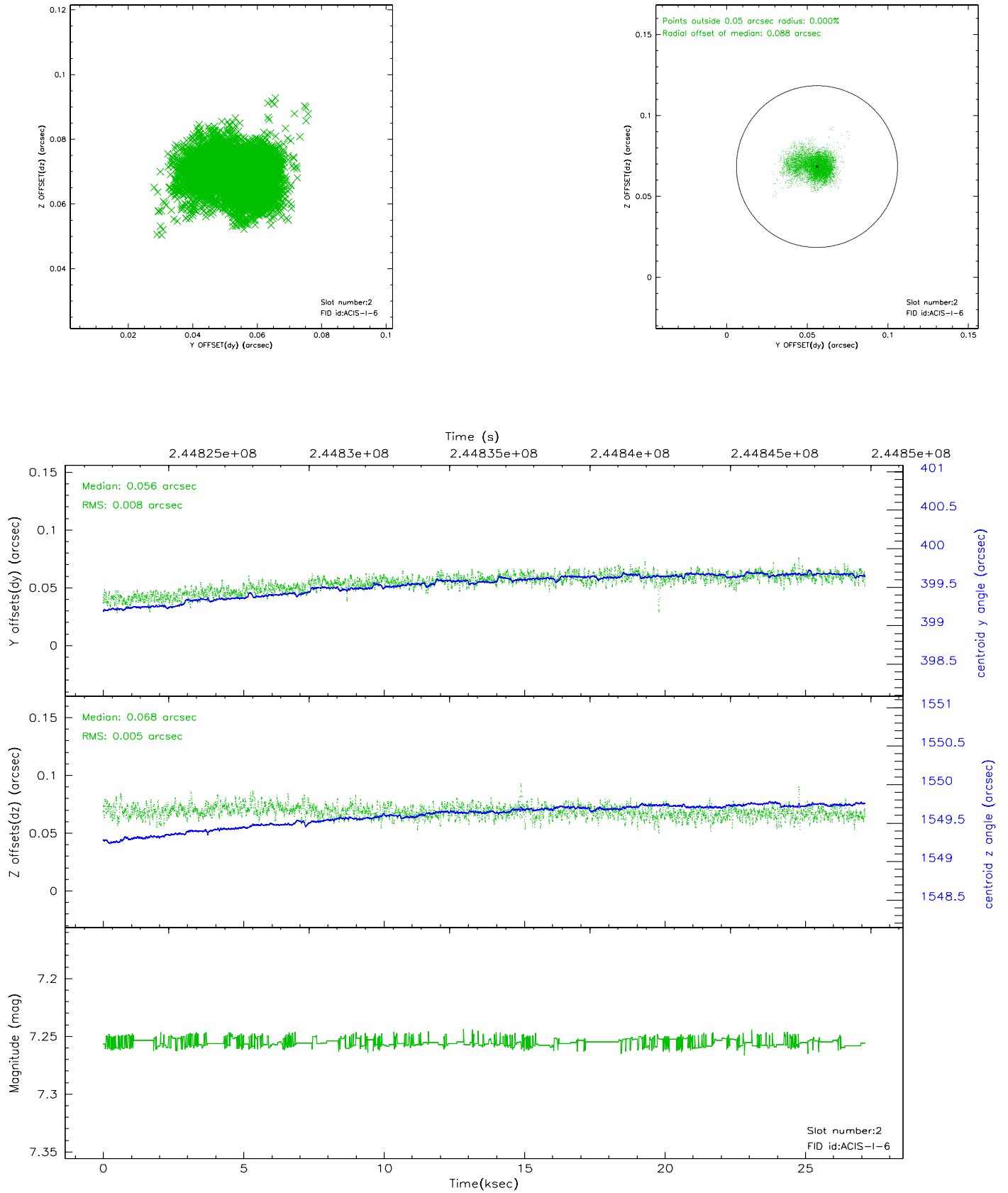
2.5.1 Slot 0



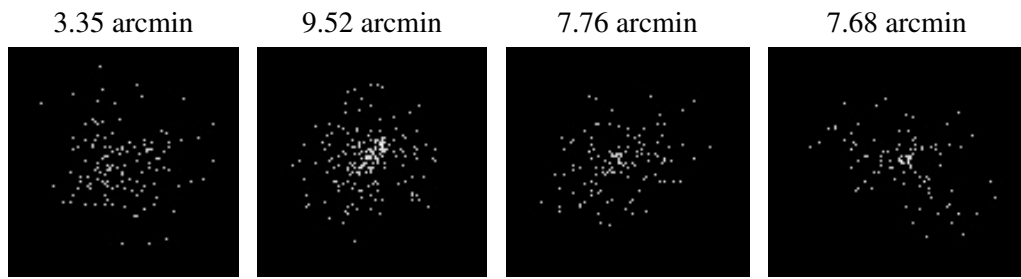
2.5.2 Slot 1



2.5.3 Slot 2



3 Point Sources



A Summary

A.1 Status

V&V Scientist	Beth Sundheim
V&V Date (YYYY-MM-DD)	2006.03.31
V&V Edition	1
V&V Disposition and Status	OK
V&V Charge Time	26.99773

A.2 Comments