

V&V Reference Report

L2 ASCDS Version : 7.6.7.1

Observation 6390 - L2 Version 3
Chandra X-Ray Center

L2 Processing Date : Jan 14 2009

Contents

1	Front	2
2	OBI	3
2.1	OBI	3
2.1.1	Images	3
2.1.2	Bias	3
2.1.3	Parameters	4
2.1.4	Events	4
2.2	Compared Parameters	5
2.3	Aspect	6
2.4	Star Slots	9
2.4.1	Slot 3	9
2.4.2	Slot 4	10
2.4.3	Slot 5	11
2.4.4	Slot 6	12
2.4.5	Slot 7	13
2.5	FID Slots	14
2.5.1	Slot 0	14
2.5.2	Slot 1	15
2.5.3	Slot 2	16
3	Point Sources	17
A	Summary	18
A.1	Status	18
A.2	Comments	18

1 Front

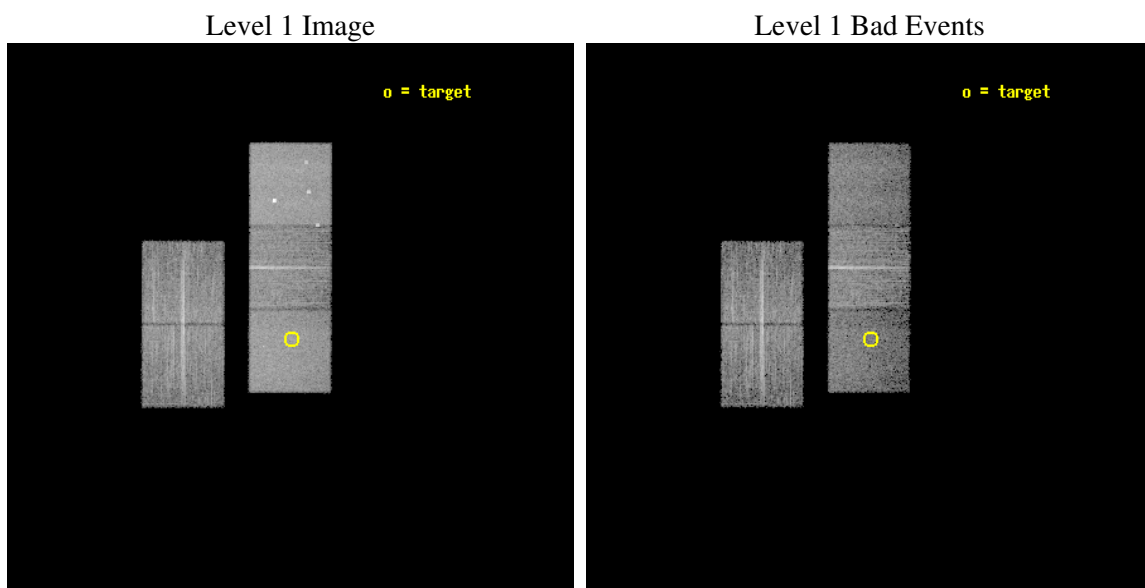
seq_num	800500
obs_id	6390
title	A detailed study of a $z>1$ galaxy cluster
observer	Dr Laurence Jones
object	XLSSJ022404.0-041328
dtcycle	0
cycle	P
ra_targ	36.017083
dec_targ	-4.224694
ra_nom	36.018711205912
dec_nom	-4.2040362516269
roll_nom	90.156795389071
revision	3
ontime	12232.59997648
livetime	12072.772052278
ontime2	12229.459085763
ontime3	12232.59997648
ontime5	12232.59997648
ontime6	12232.59997648
ontime7	12232.59997648
l2events	130949



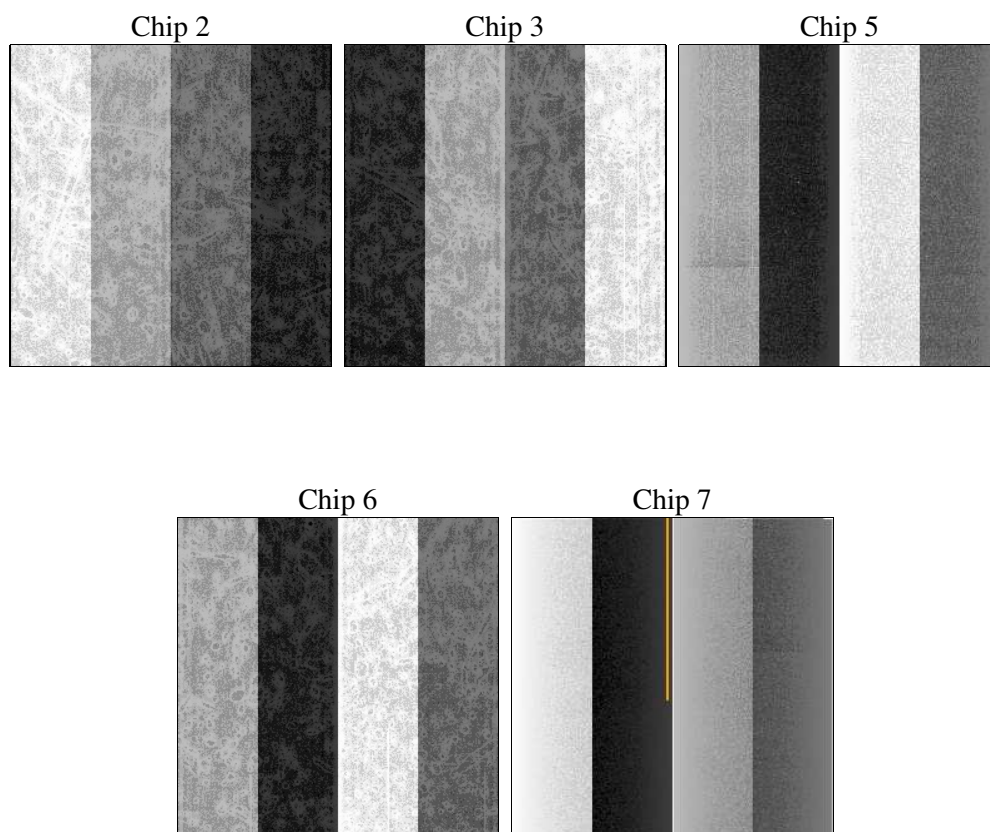
2 OBI

2.1 OBI

2.1.1 Images



2.1.2 Bias



2.1.3 Parameters

obi_num	0
ascdsver	7.6.11.10
caldsver	3.5.1
date	2009-01-14T10:12:46
revision	3

sched_exp_time	41664.172000
ontime	12232.59997648
ontime2	12229.459085763
ontime3	12232.59997648
ontime5	12232.59997648
ontime6	12232.59997648
ontime7	12232.59997648
l1events	412190

2.1.4 Events

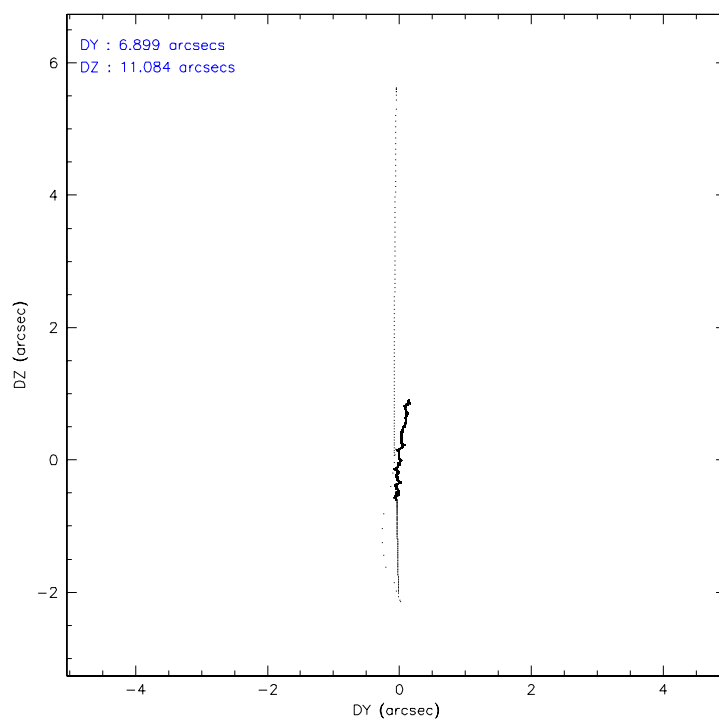
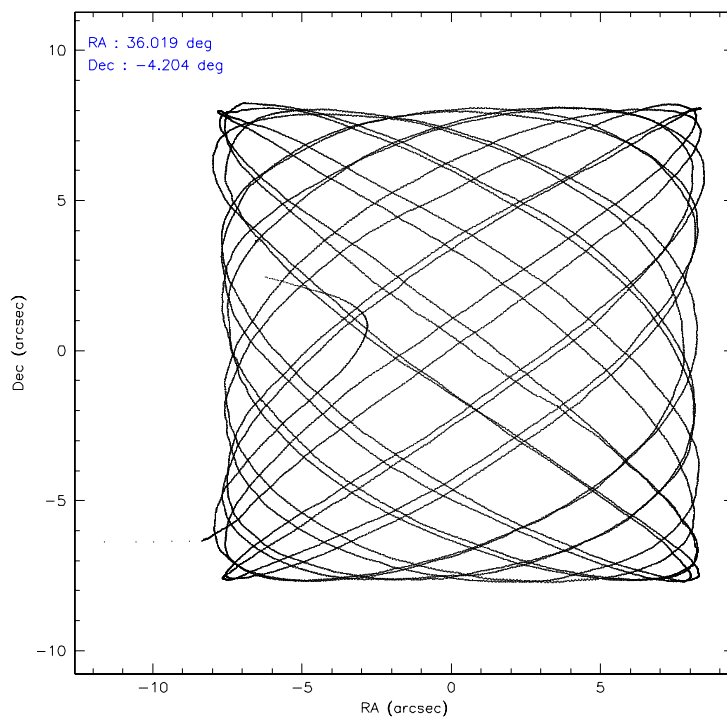
	ccd 2	ccd 3	ccd 5	ccd 6	ccd 7
level 1 events	72070	69568	108081	73587	88884
rejected events	60875	59045	48437	61727	41488
rejected %	84%	84%	44%	83%	46%

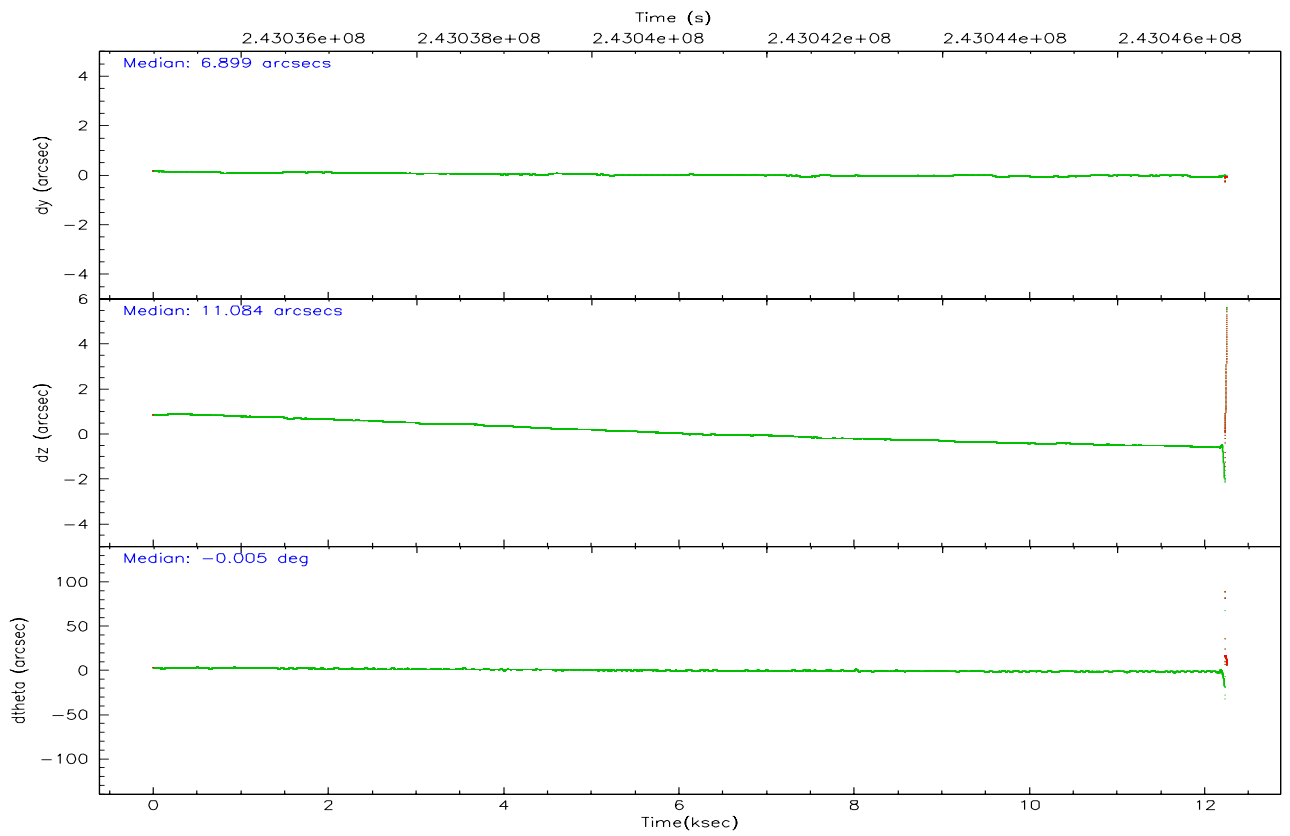
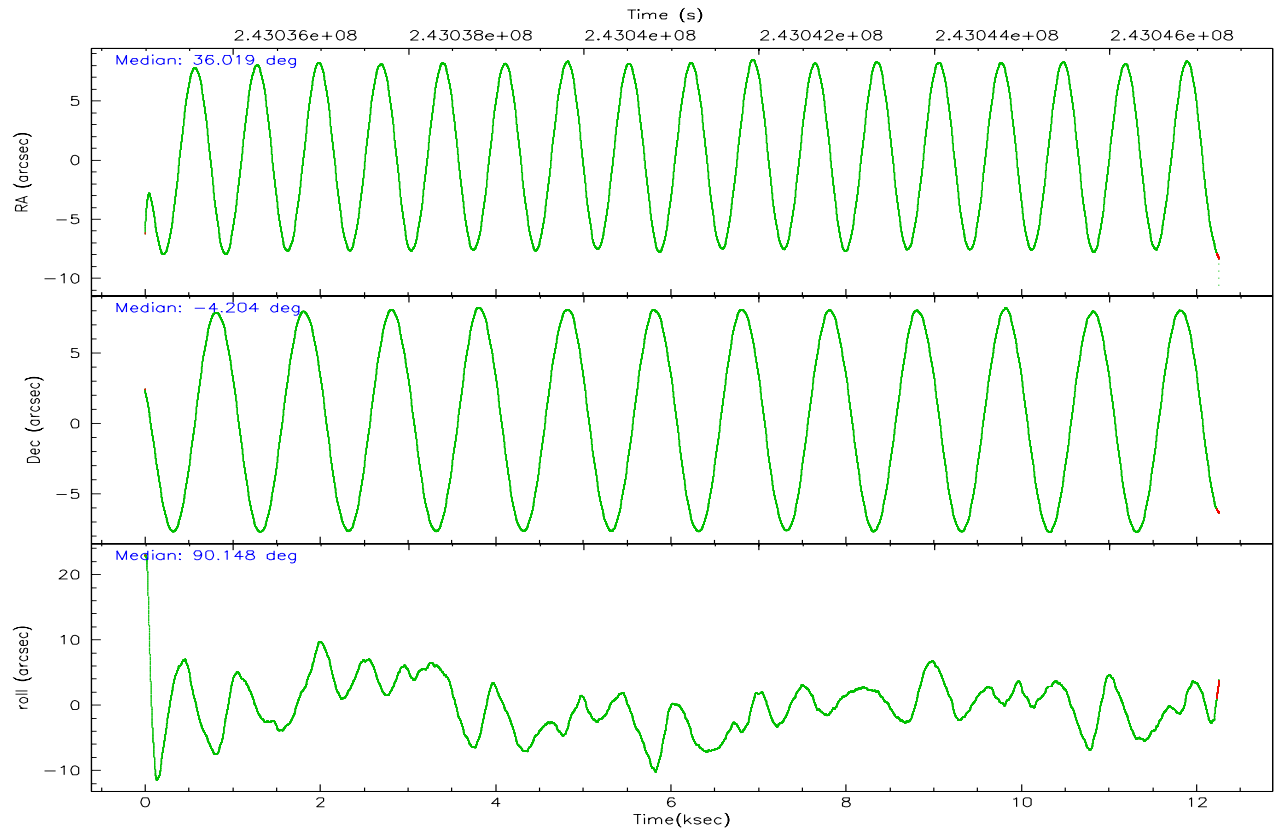
	ccd 2	ccd 3	ccd 5	ccd 6	ccd 7
grade 0 events	4775	4258	7562	4611	5648
	6%	6%	6%	6%	6%
grade 1 events	41	37	117	40	66
	0%	0%	0%	0%	0%
grade 2 events	2512	2115	19670	2356	9899
	3%	3%	18%	3%	11%
grade 3 events	934	1032	2823	1071	4833
	1%	1%	2%	1%	5%
grade 4 events	1034	999	2877	1047	4709
	1%	1%	2%	1%	5%
grade 5 events	2031	2415	7577	2582	7957
	2%	3%	7%	3%	8%
grade 6 events	2276	2418	29005	3117	24038
	3%	3%	26%	4%	27%
grade 7 events	58467	56294	38450	58763	31734
	81%	80%	35%	79%	35%

2.2 Compared Parameters

Parameter	Planned	Actual	Parameter	Planned	Actual
Instrument	ACIS	ACIS	Obspar format version number	6	6
Detector	ACIS-23567	ACIS-23567	Obspar file type	PREDICTED	ACTUAL
Grating	NONE	NONE	Obspar update status	NONE	UPDATED
Data mode	VFAINT	VFAINT	On-chip summing requested	N	N
Observation mode	POINTING	POINTING	Subarray requested	NONE	NONE
Pointing RA	36.032793	36.01871120591152	Alternating exposures requested	N	N
Pointing Dec	-4.227361	-4.204036251626899	Primary exposure time	0.000000	3.1
Pointing Roll	90.001156	90.15679538907074			
SIM focus pos (mm)	-0.684267	-0.6828225247311905			
SIM defocus (mm)	0	0.001444936568705701			
SIM translation stage pos (mm)	-190.132523	-190.1425803651734			
SIM translation stage offset (mm)	0	0.01005778216563158			
Observation start time	243035116.184000	243033939.89352			
Observation start date	2005-09-13T21:44:12	2005-09-13T21:25:39			
Observation end time	243076780.184000	243047267.96913			
Observation end date	2005-09-14T09:18:36	2005-09-14T01:07:47			
Read mode	TIMED	TIMED			

2.3 Aspect



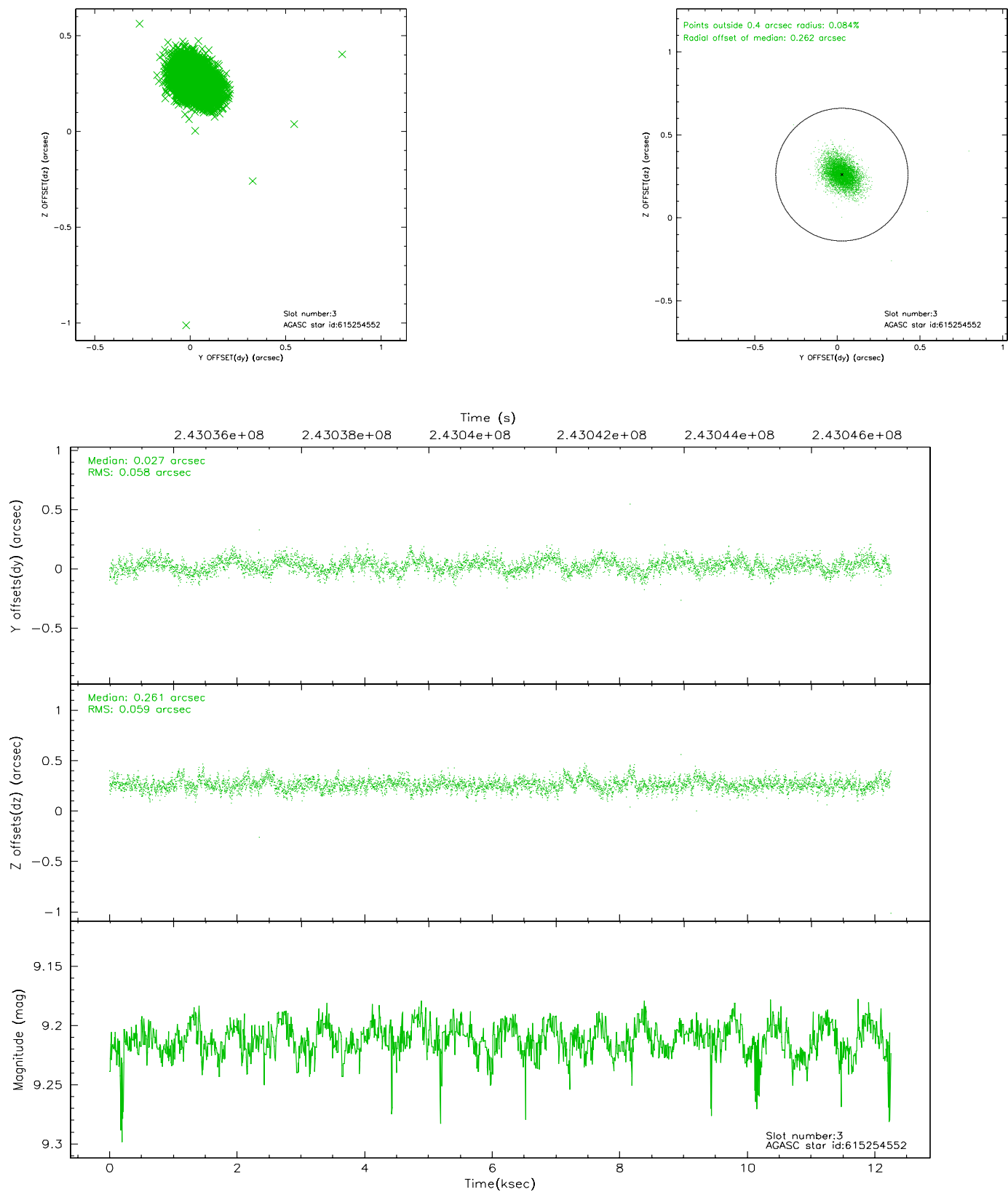


Slot Statistics

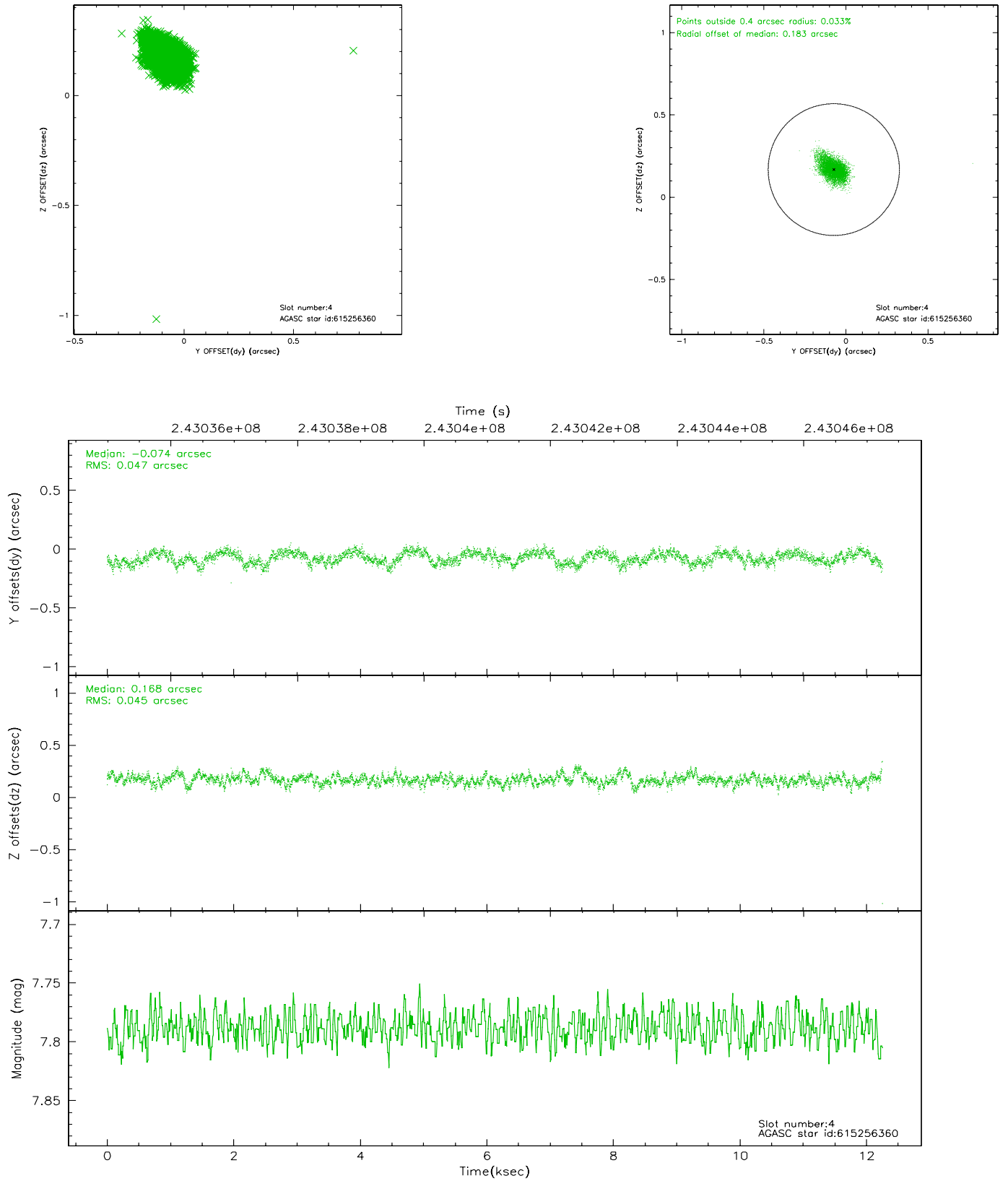
slot	status	id	mag	n_pts	med_dy	med_dz	dr1	dr2	ra	dec	mean_y	mean_z
0	FID	ACIS-S-2	7.10	2982	-0.050	-0.018	0.012	0.025	0.000000	0.000000	-759.69	-1732.43
1	FID	ACIS-S-4	7.21	2981	0.085	0.028	0.008	0.017	0.000000	0.000000	2153.51	175.72
2	FID	ACIS-S-5	7.23	2982	-0.068	-0.002	0.011	0.019	0.000000	0.000000	-1812.06	169.77
3	GUIDE	615254552	9.21	5969	0.027	0.261	0.084	0.142	36.600600	-3.877551	1259.18	-2038.88
4	GUIDE	615256360	7.79	5975	-0.074	0.168	0.065	0.111	36.286608	-3.875886	1265.72	-911.83
5	GUIDE	615256944	9.83	5975	0.158	-0.341	0.135	0.298	35.497386	-4.510719	-1020.39	1921.01
6	GUIDE	615260160	9.72	5972	0.052	-0.131	0.107	0.177	35.737387	-3.921265	1101.21	1061.28
7	GUIDE	615261280	10.30	5971	-0.157	0.052	0.186	0.311	36.528599	-4.553299	-1173.39	-1779.12

2.4 Star Slots

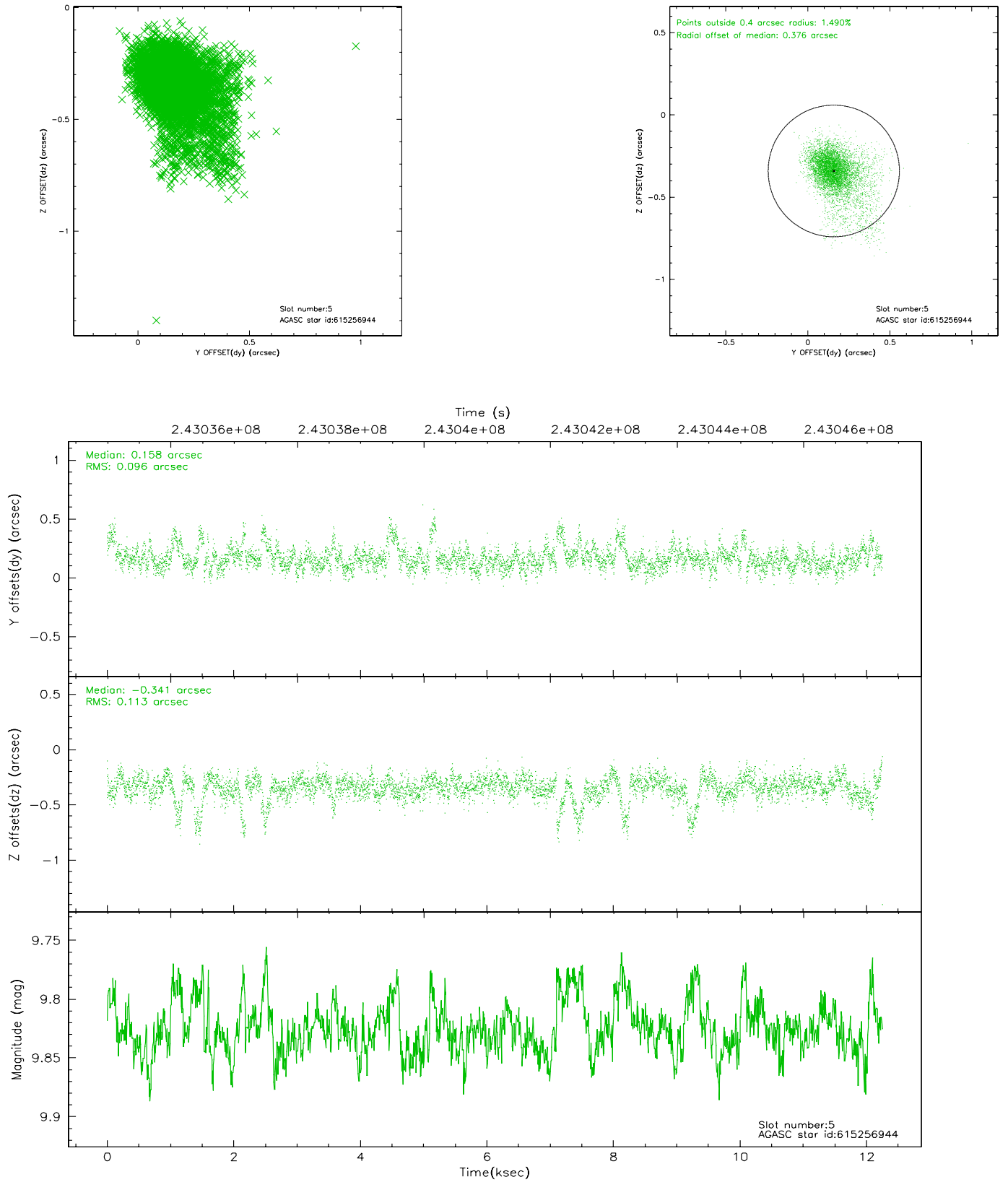
2.4.1 Slot 3



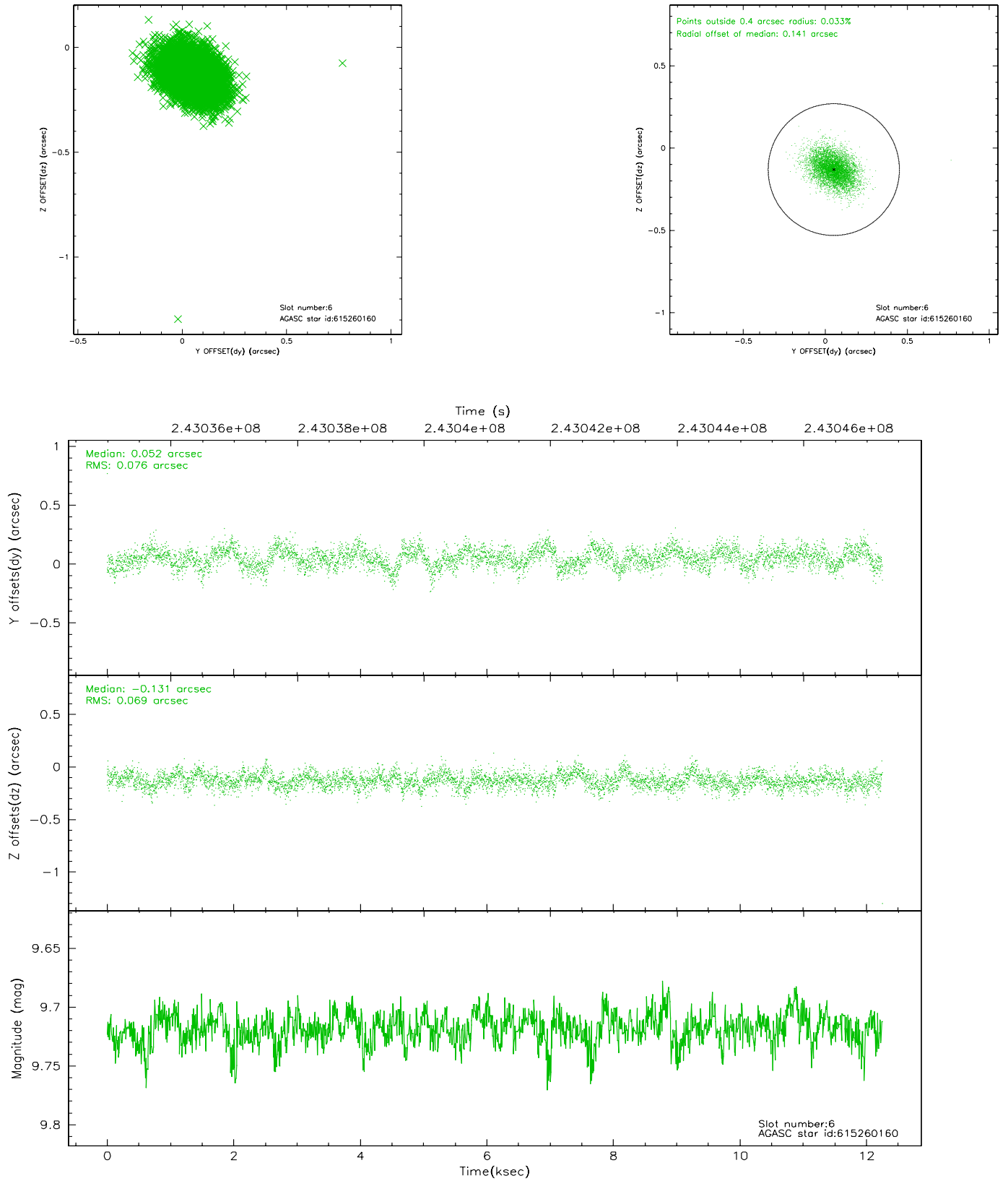
2.4.2 Slot 4



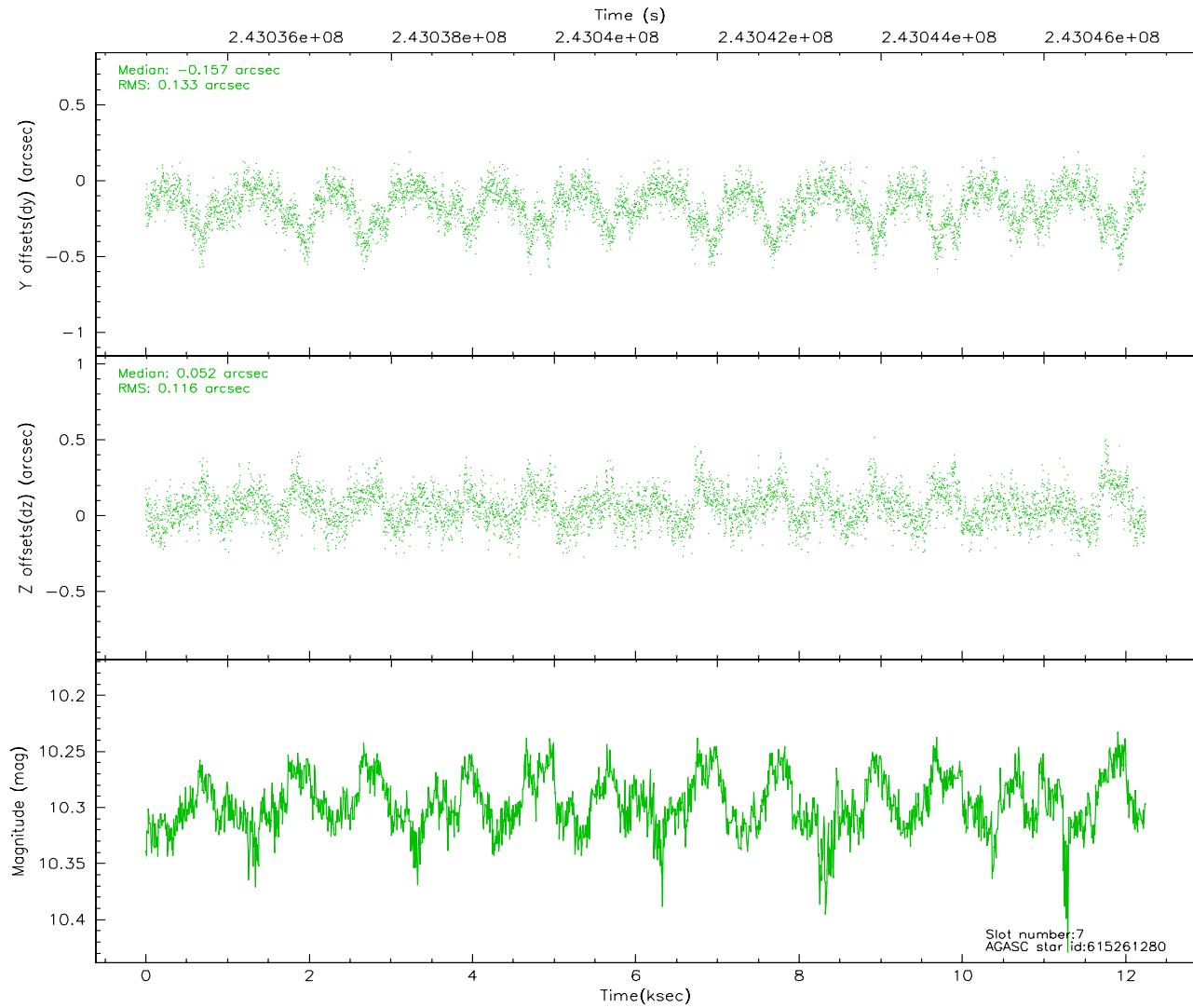
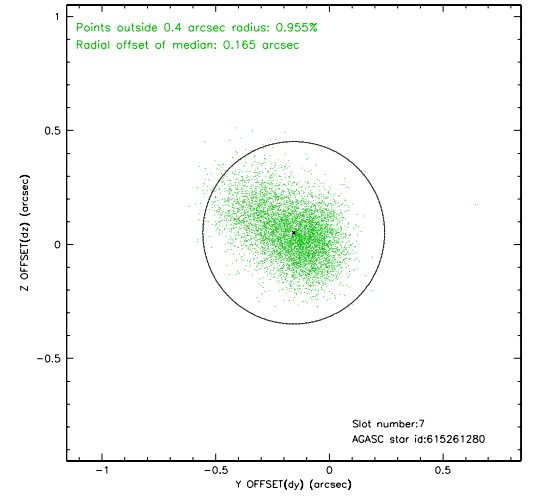
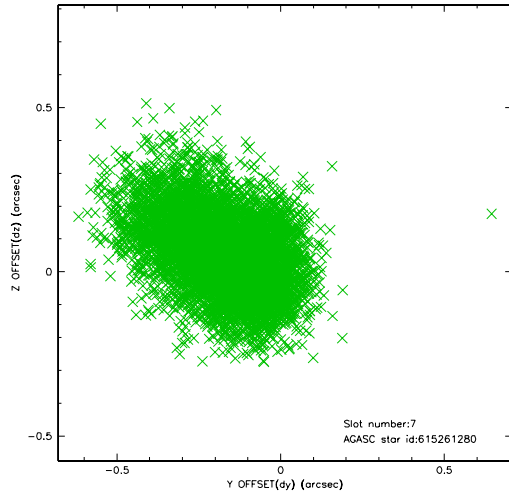
2.4.3 Slot 5



2.4.4 Slot 6

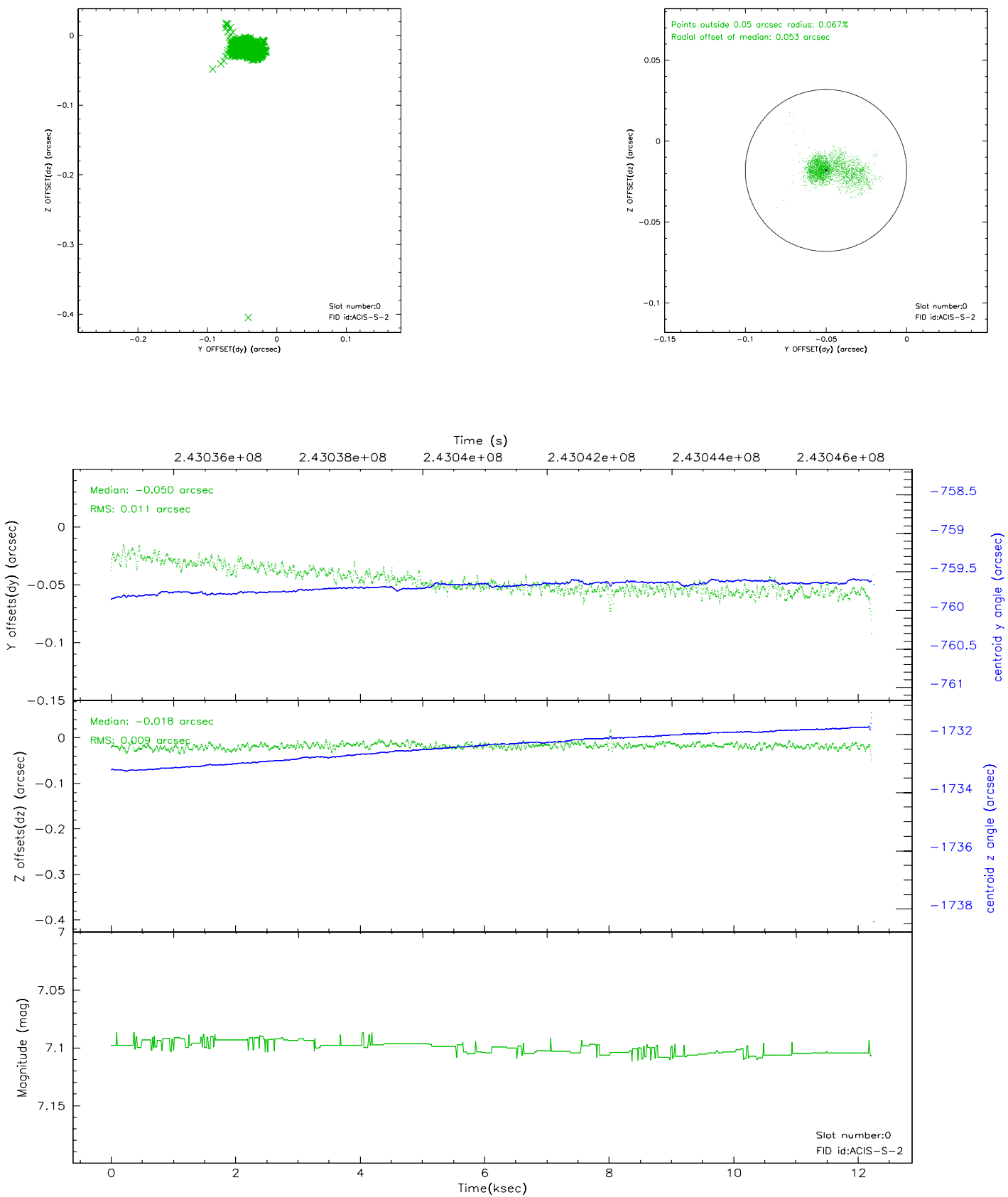


2.4.5 Slot 7

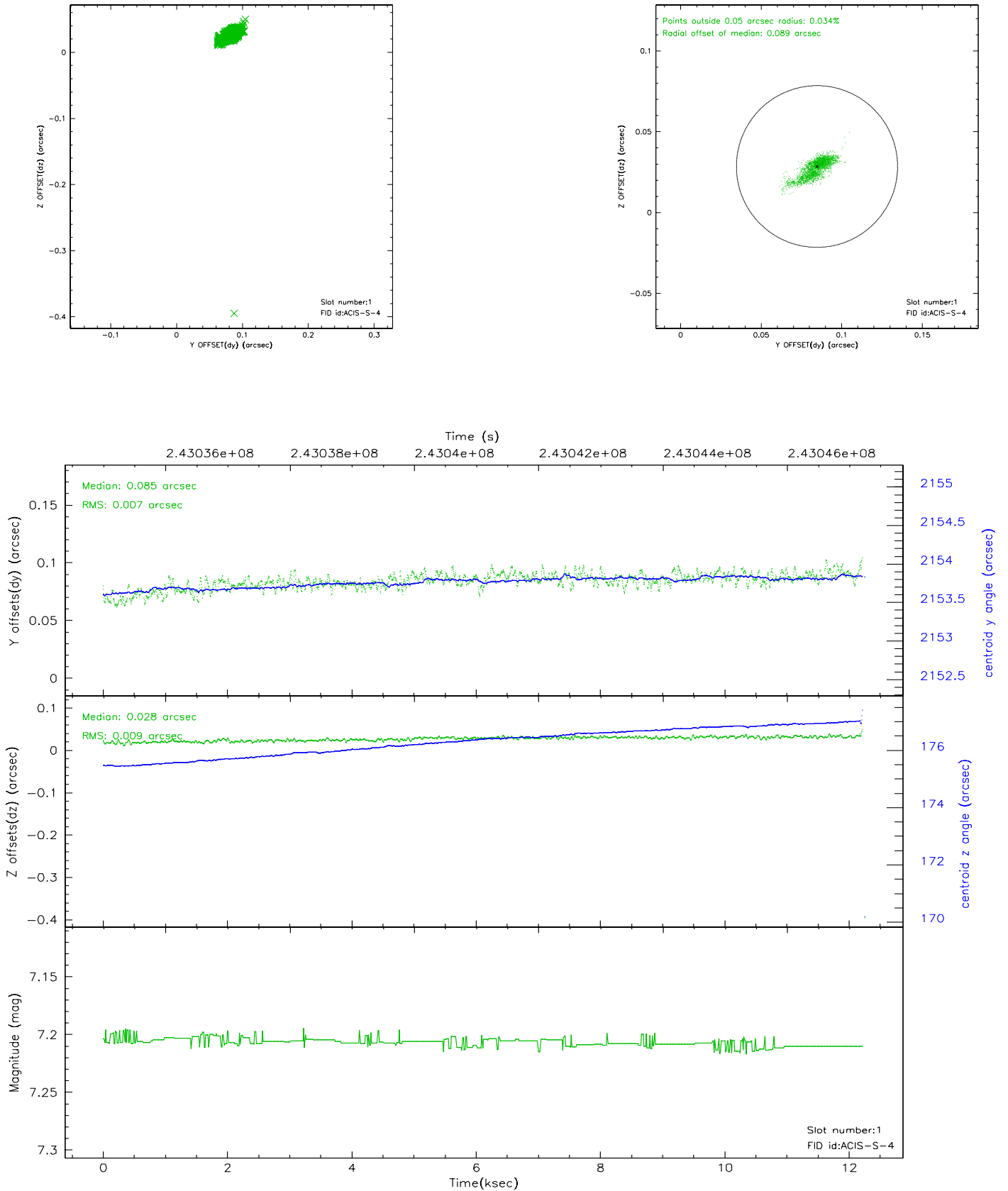


2.5 FID Slots

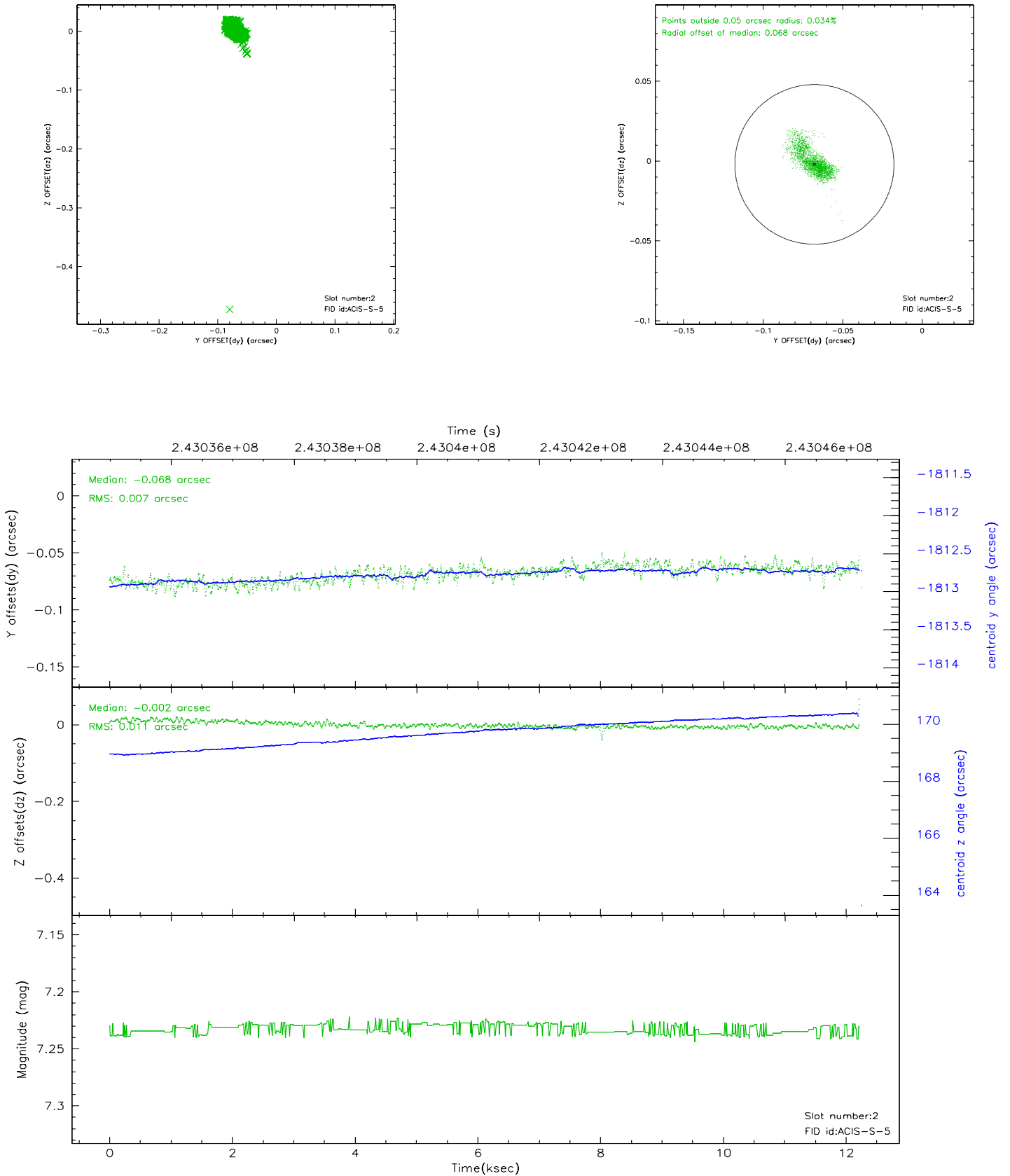
2.5.1 Slot 0



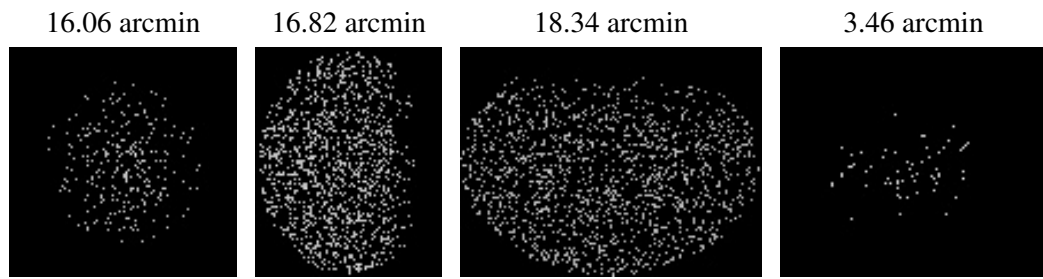
2.5.2 Slot 1



2.5.3 Slot 2



3 Point Sources



A Summary

A.1 Status

V&V Scientist	Beth Sundheim
V&V Date (YYYY-MM-DD)	2009.01.15
V&V Edition	1
V&V Disposition and Status	OK
V&V Charge Time	12.23259

A.2 Comments

This observation was interrupted by safing of the science instruments due to high solar radiation environment. The observation was interrupted at 2005:257:01:06.