

V&V Reference Report

L2 ASCDS Version : 7.6.7.1

Observation 6357 - L2 Version 002
Chandra X-Ray Center

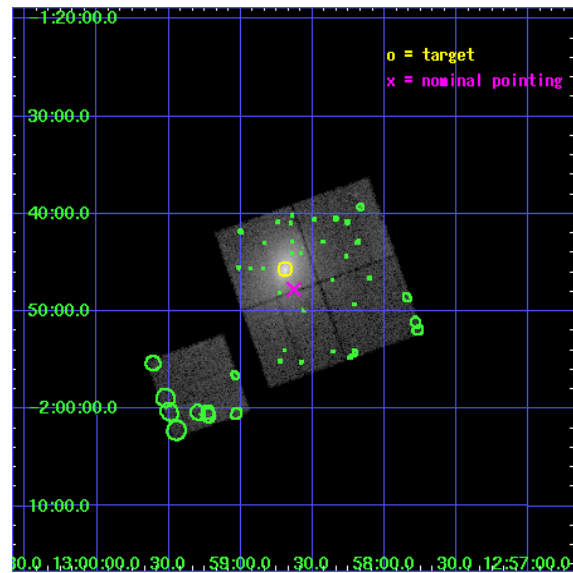
L2 Processing Date : Mar 19 2006

Contents

1	Front	2
2	OBI	3
2.1	OBI	3
2.1.1	Images	3
2.1.2	Bias	3
2.1.3	Parameters	4
2.1.4	Events	4
2.2	Compared Parameters	5
2.3	Aspect	6
2.4	Star Slots	9
2.4.1	Slot 3	9
2.4.2	Slot 4	10
2.4.3	Slot 5	11
2.4.4	Slot 6	12
2.4.5	Slot 7	13
2.5	FID Slots	14
2.5.1	Slot 0	14
2.5.2	Slot 1	15
2.5.3	Slot 2	16
3	Point Sources	17
A	Summary	18
A.1	Status	18
A.2	Comments	18

1 Front

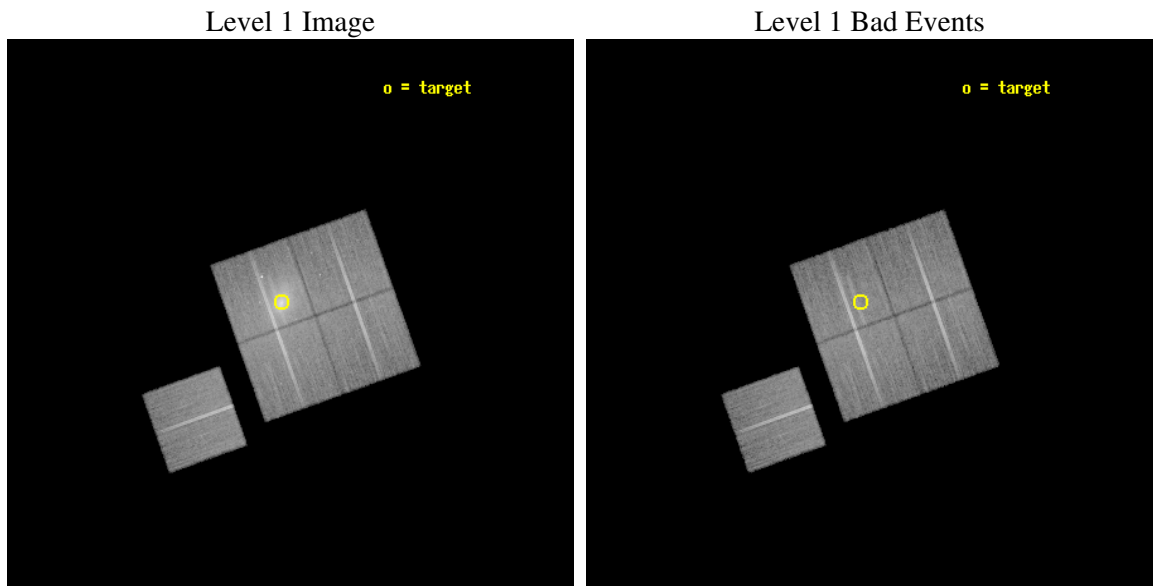
seq_num	800535
obs_id	6357
title	A Deep Observation of a Radio-Quiet Cooling Flow
observer	Dr. Megan Donahue
object	Abell 1650
dtcycle	0
cycle	P
ra_targ	194.672083
dec_targ	-1.761389
ra_nom	194.6576502451
dec_nom	-1.7961674074831
roll_nom	250.40561831434
revision	2
ontime	33089.358966112
livetime	32657.022131188
ontime0	33092.499936372
ontime1	33092.499936372
ontime2	33089.358966082
ontime3	33089.358966112
ontime6	33086.217985958
l2events	190426



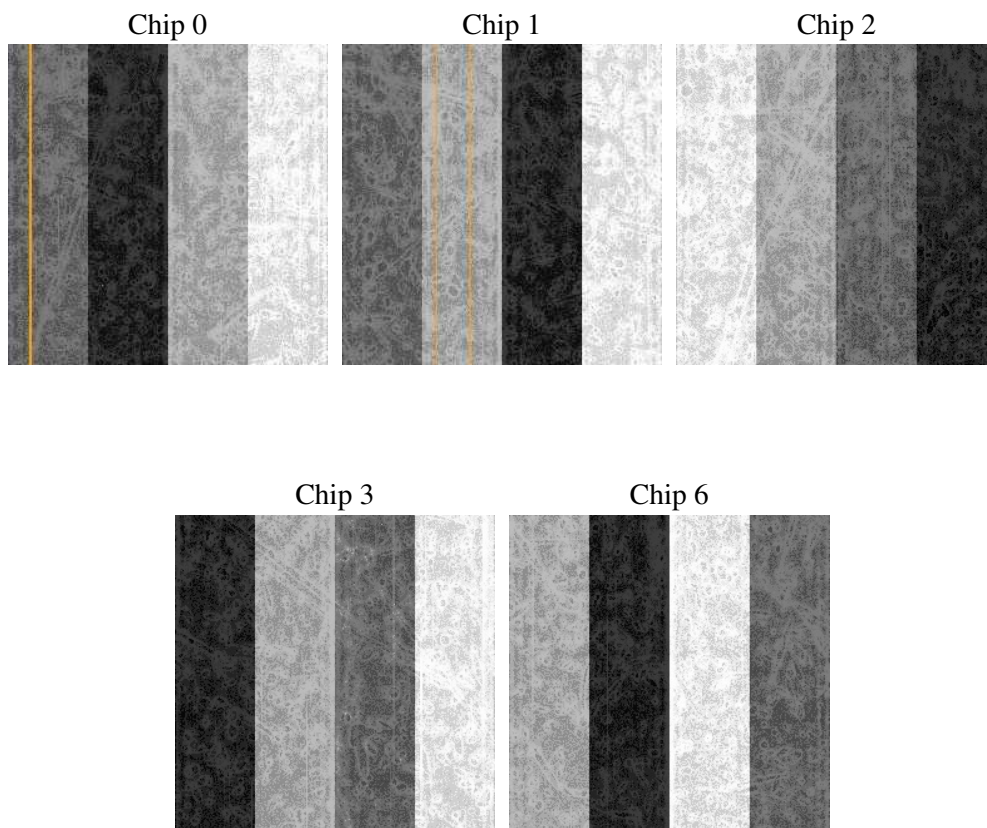
2 OBI

2.1 OBI

2.1.1 Images



2.1.2 Bias



2.1.3 Parameters

obi_num	0
ascdsver	7.6.7.1
caldbver	3.2.1
date	2006-03-19T05:37:29
revision	2

sched_exp_time	33000.000000
ontime	33413.987242281
ontime0	33417.128212541
ontime1	33417.128192633
ontime2	33413.987242252
ontime3	33413.987242281
ontime6	33410.846262127
l1events	1108861

2.1.4 Events

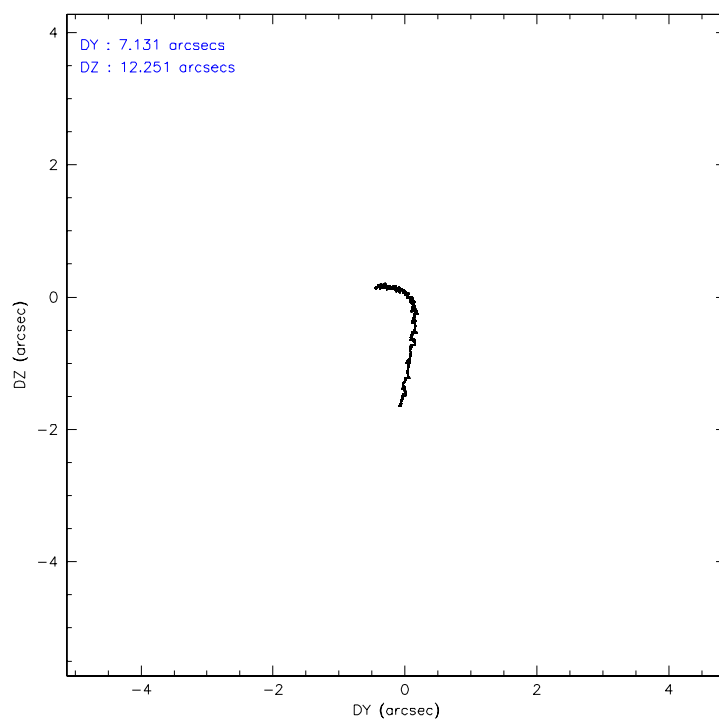
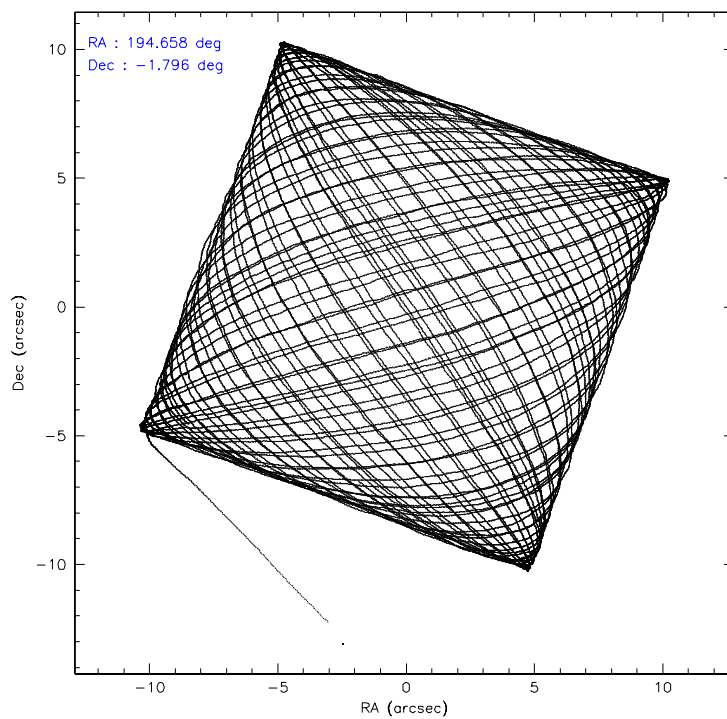
	ccd 0	ccd 1	ccd 2	ccd 3	ccd 6
level 1 events	195480	195011	223405	292138	202827
rejected events	173504	165278	193310	184529	181830
rejected %	88%	84%	86%	63%	89%

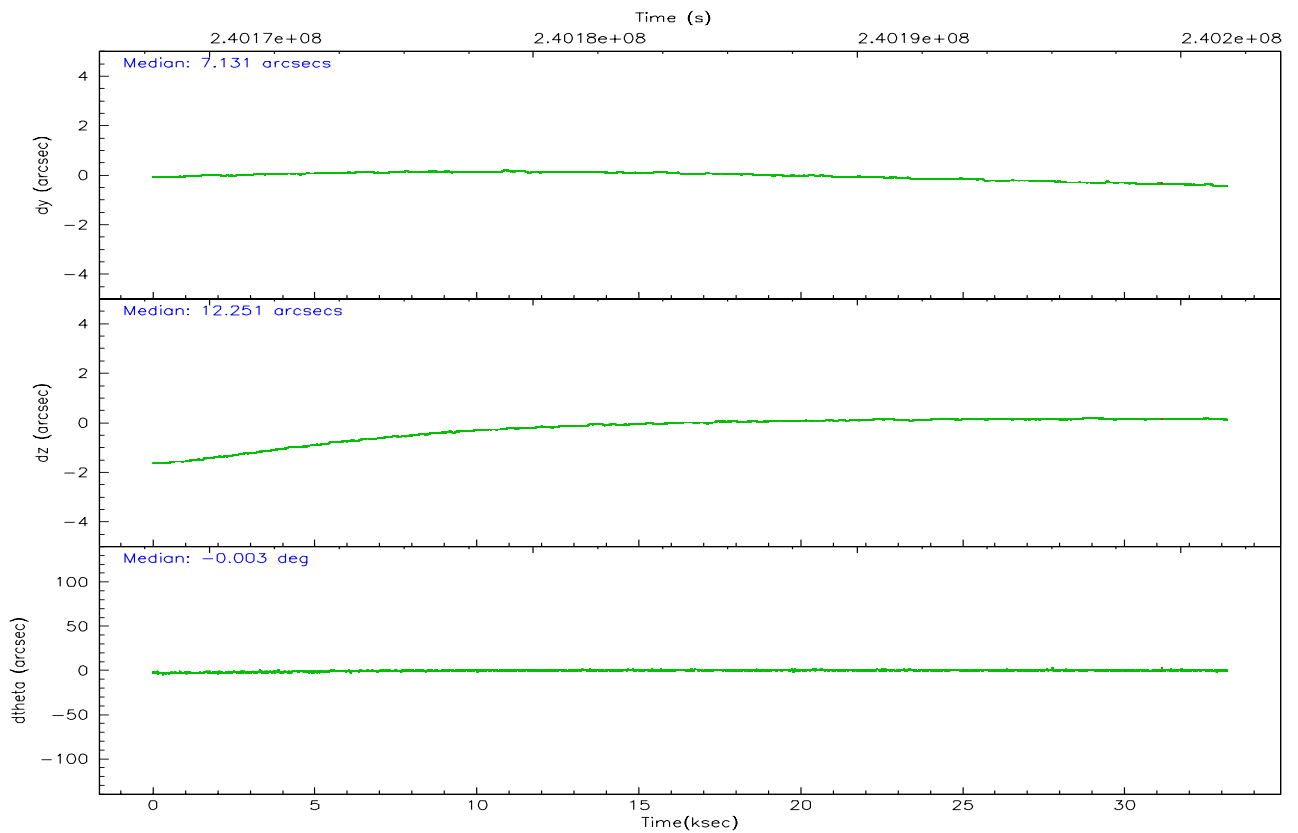
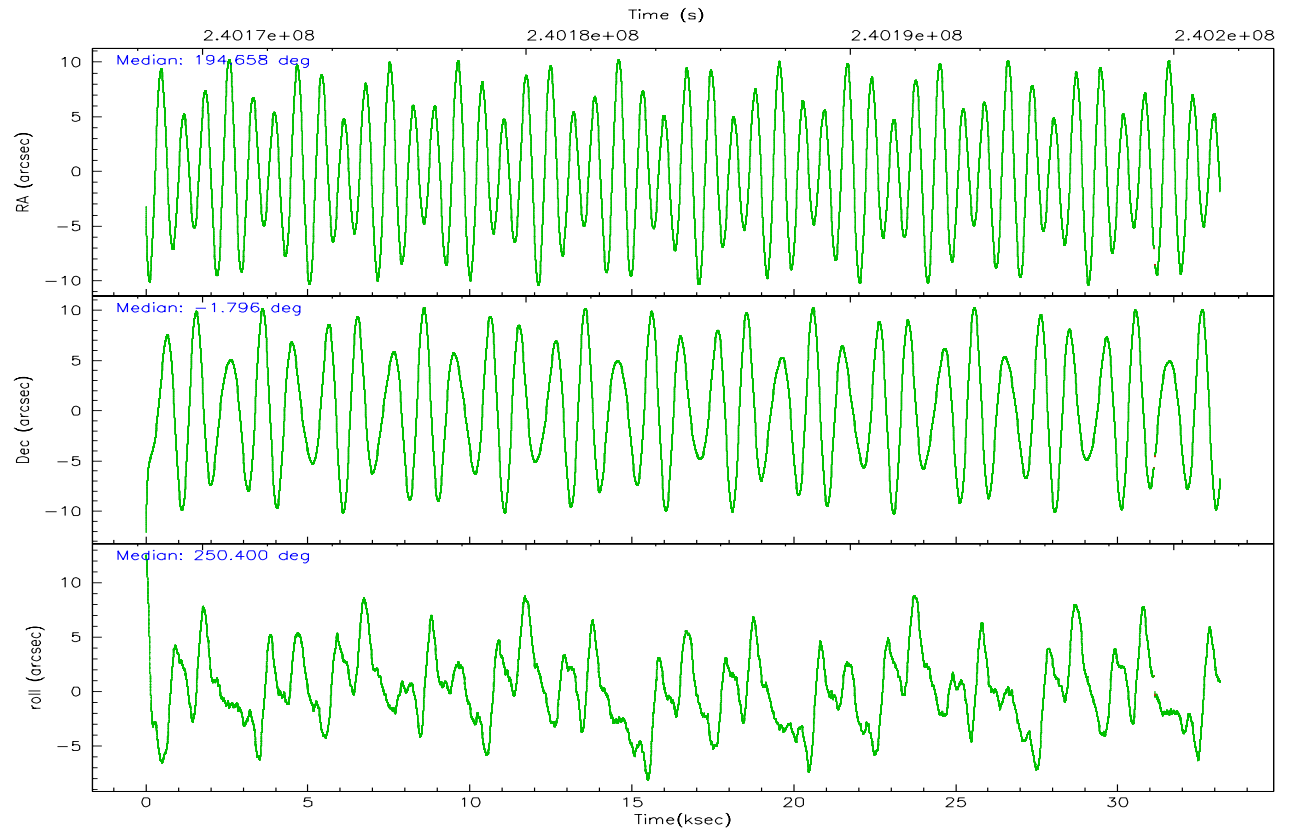
	ccd 0	ccd 1	ccd 2	ccd 3	ccd 6
grade 0 events	8782	14589	15714	80504	7708
	4%	7%	7%	27%	3%
grade 1 events	114	111	138	498	91
	0%	0%	0%	0%	0%
grade 2 events	4896	5653	5683	12558	4445
	2%	2%	2%	4%	2%
grade 3 events	2363	2629	2532	4766	2347
	1%	1%	1%	1%	1%
grade 4 events	2248	2563	2561	4760	2327
	1%	1%	1%	1%	1%
grade 5 events	7103	7953	6900	8393	7989
	3%	4%	3%	2%	3%
grade 6 events	3880	4631	3830	5765	4358
	1%	2%	1%	1%	2%
grade 7 events	166094	156882	186047	174894	173562
	84%	80%	83%	59%	85%

2.2 Compared Parameters

Parameter	Planned	Actual	Parameter	Planned	Actual
Instrument	ACIS	ACIS	Obspar format version number	6	6
Detector	ACIS-01236	ACIS-01236	Obspar file type	PREDICTED	ACTUAL
Grating	NONE	NONE	Obspar update status	NONE	UPDATED
Data mode	VFAINT	VFAINT	On-chip summing requested	N	N
Observation mode	POINTING	POINTING	Subarray requested	NONE	NONE
Pointing RA	194.652591	194.6576502451019	Alternating exposures requested	N	N
Pointing Dec	-1.769260	-1.796167407483126	Primary exposure time	0.000000	3.1
Pointing Roll	250.196774	250.4056183143391			
SIM focus pos (mm)	-0.782348	-0.7809083437167272			
SIM defocus (mm)	0	0.001439871863259334			
SIM translation stage pos (mm)	-227.592463	-227.5933067819097			
SIM translation stage offset (mm)	-6	-5.999146221020027			
Observation start time	240168423.184000	240167314.57445			
Observation start date	2005-08-11T17:25:59	2005-08-11T17:08:34			
Observation end time	240201423.184000	240201938.05104			
Observation end date	2005-08-12T02:35:59	2005-08-12T02:45:38			
Read mode	TIMED	TIMED			

2.3 Aspect



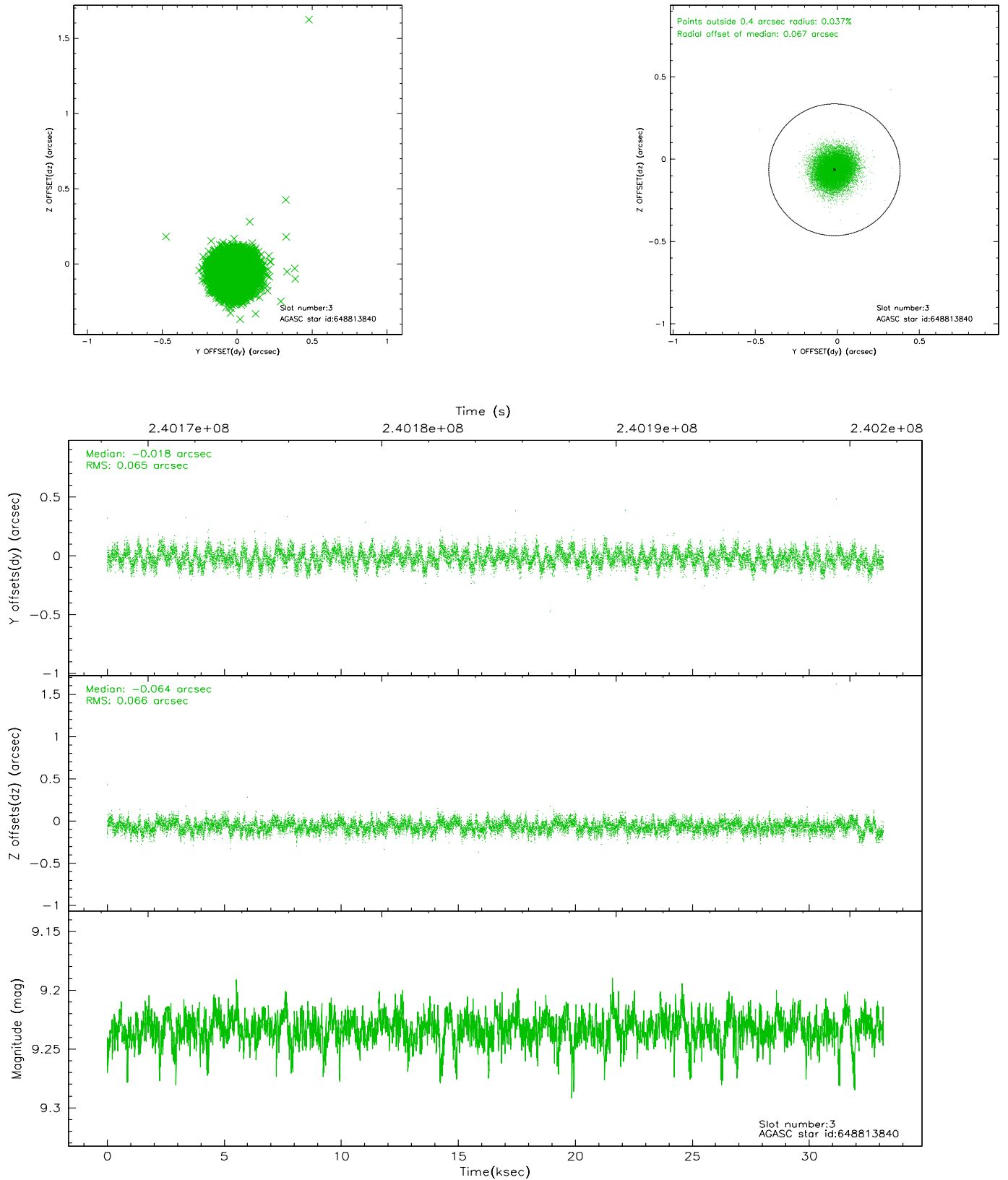


Slot Statistics

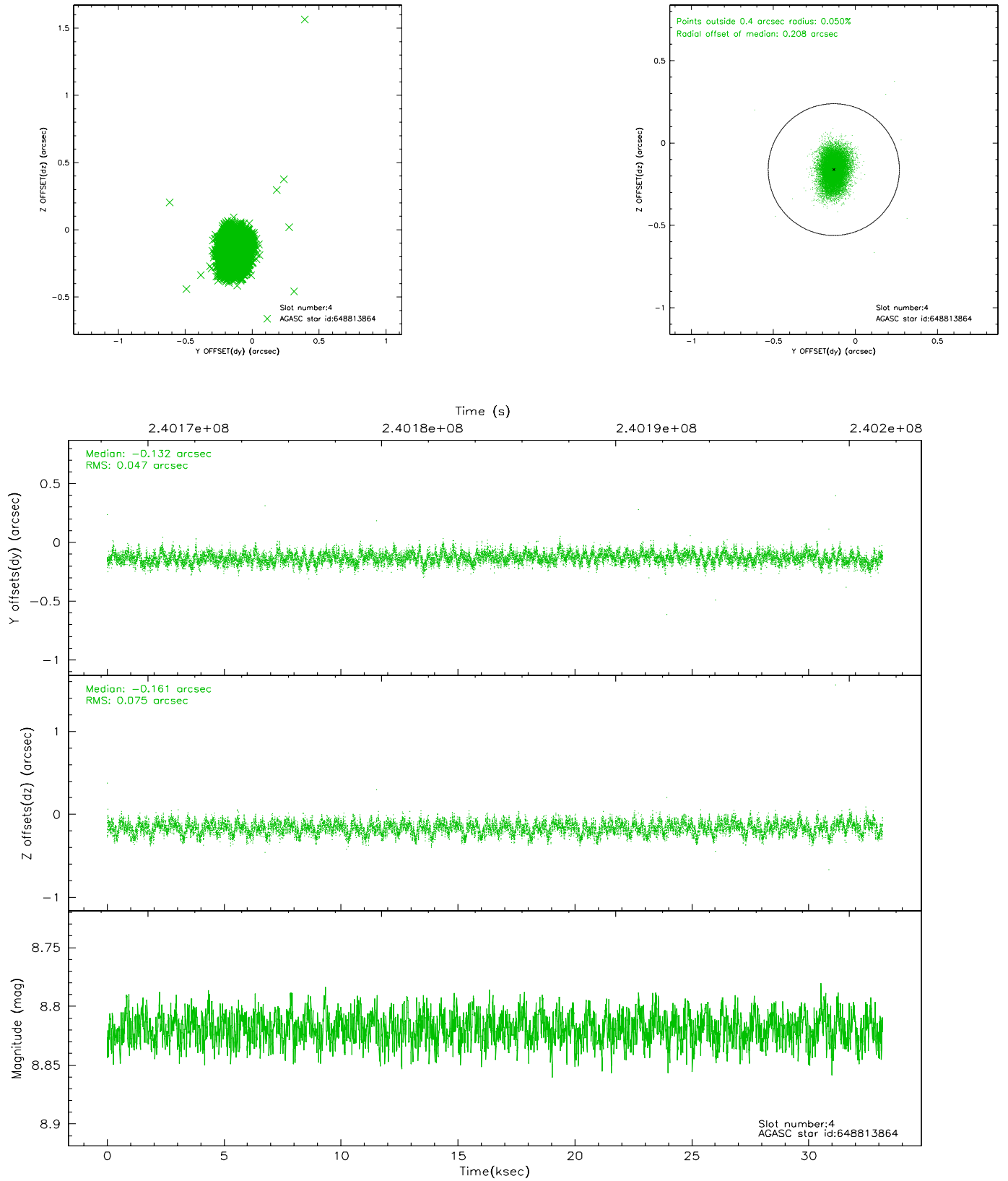
slot	status	id	mag	n_pts	med_dy	med_dz	dr1	dr2	ra	dec	mean_y	mean_z
0	FID	ACIS-I-1	7.23	8082	0.063	-0.146	0.014	0.060	0.000000	0.000000	932.56	-958.78
1	FID	ACIS-I-4	7.15	8082	-0.008	0.094	0.019	0.036	0.000000	0.000000	2152.18	941.99
2	FID	ACIS-I-5	7.22	8082	-0.151	0.122	0.014	0.026	0.000000	0.000000	-1815.62	939.10
3	GUIDE	648813840	9.23	16150	-0.018	-0.064	0.098	0.154	194.717621	-1.945504	518.27	435.70
4	GUIDE	648813864	8.82	16160	-0.132	-0.161	0.092	0.152	194.235605	-1.103465	-1746.09	-2224.18
5	GUIDE	648815736	9.93	16146	0.129	-0.093	0.135	0.214	194.100949	-2.130858	1897.93	-1425.89
6	GUIDE	648815800	9.56	16075	0.178	0.127	0.121	0.188	194.475560	-2.052849	1176.80	-253.04
7	GUIDE	649731776	10.02	16139	-0.162	0.193	0.197	0.302	195.271404	-1.336449	-2220.15	1567.93

2.4 Star Slots

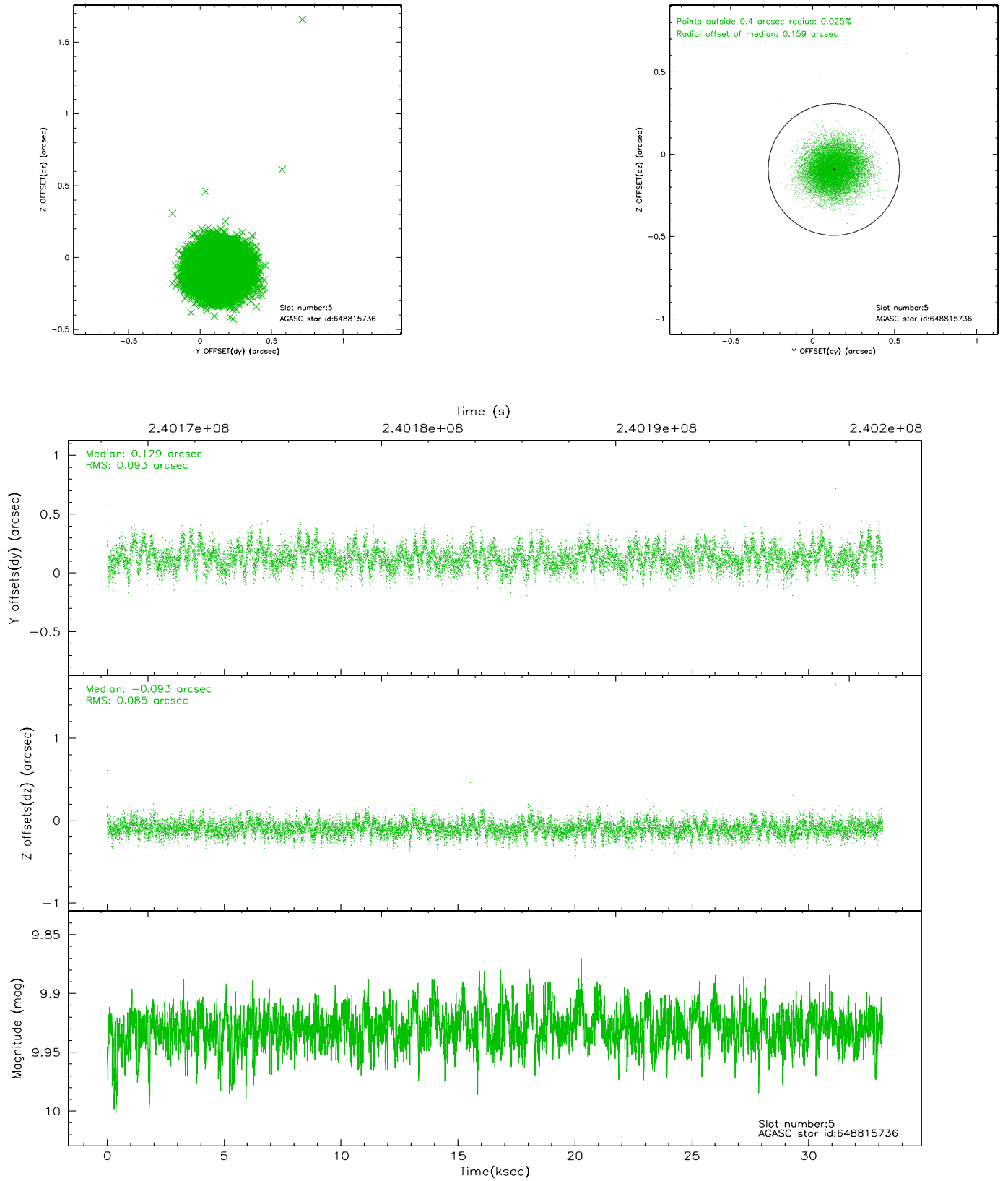
2.4.1 Slot 3



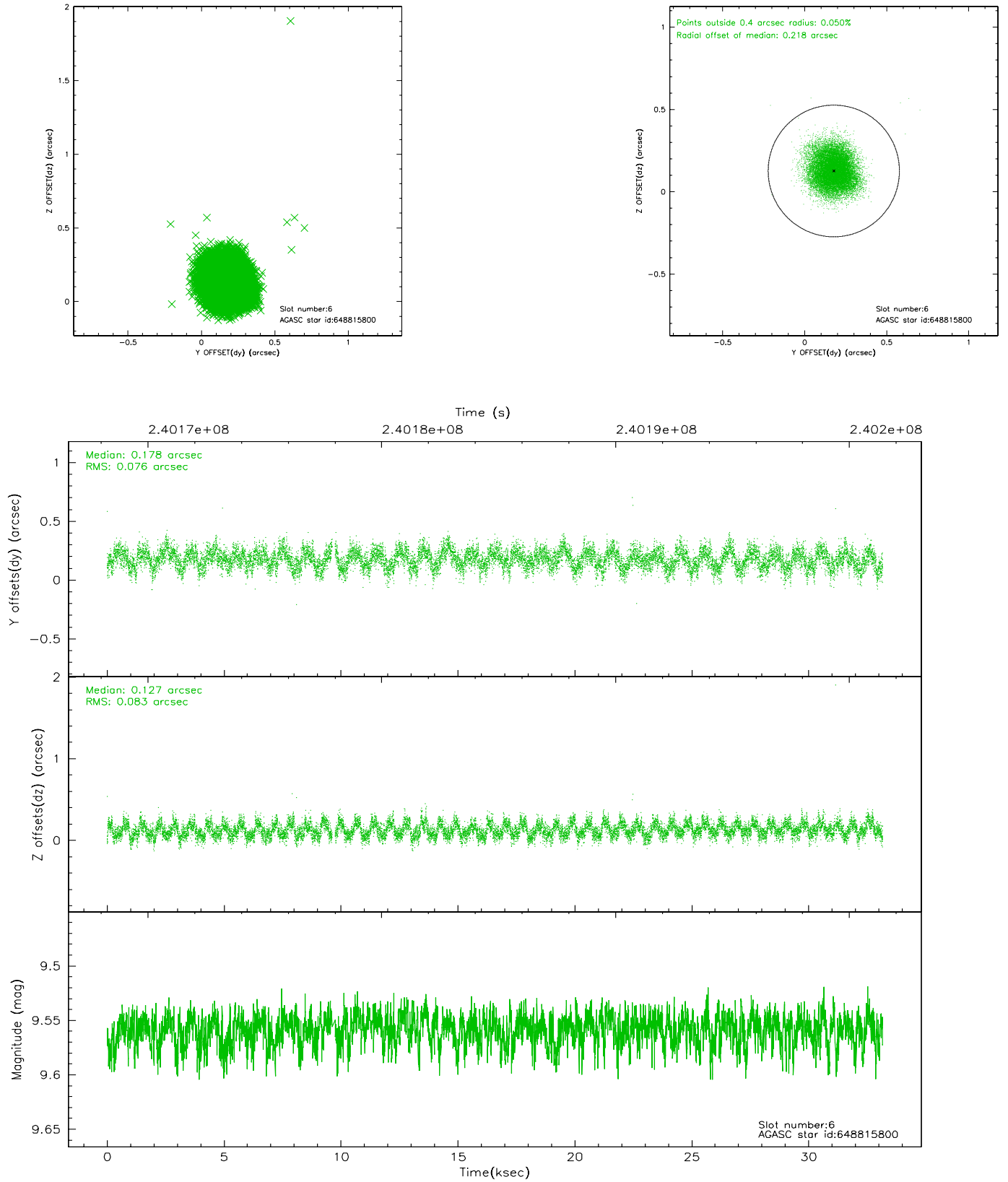
2.4.2 Slot 4



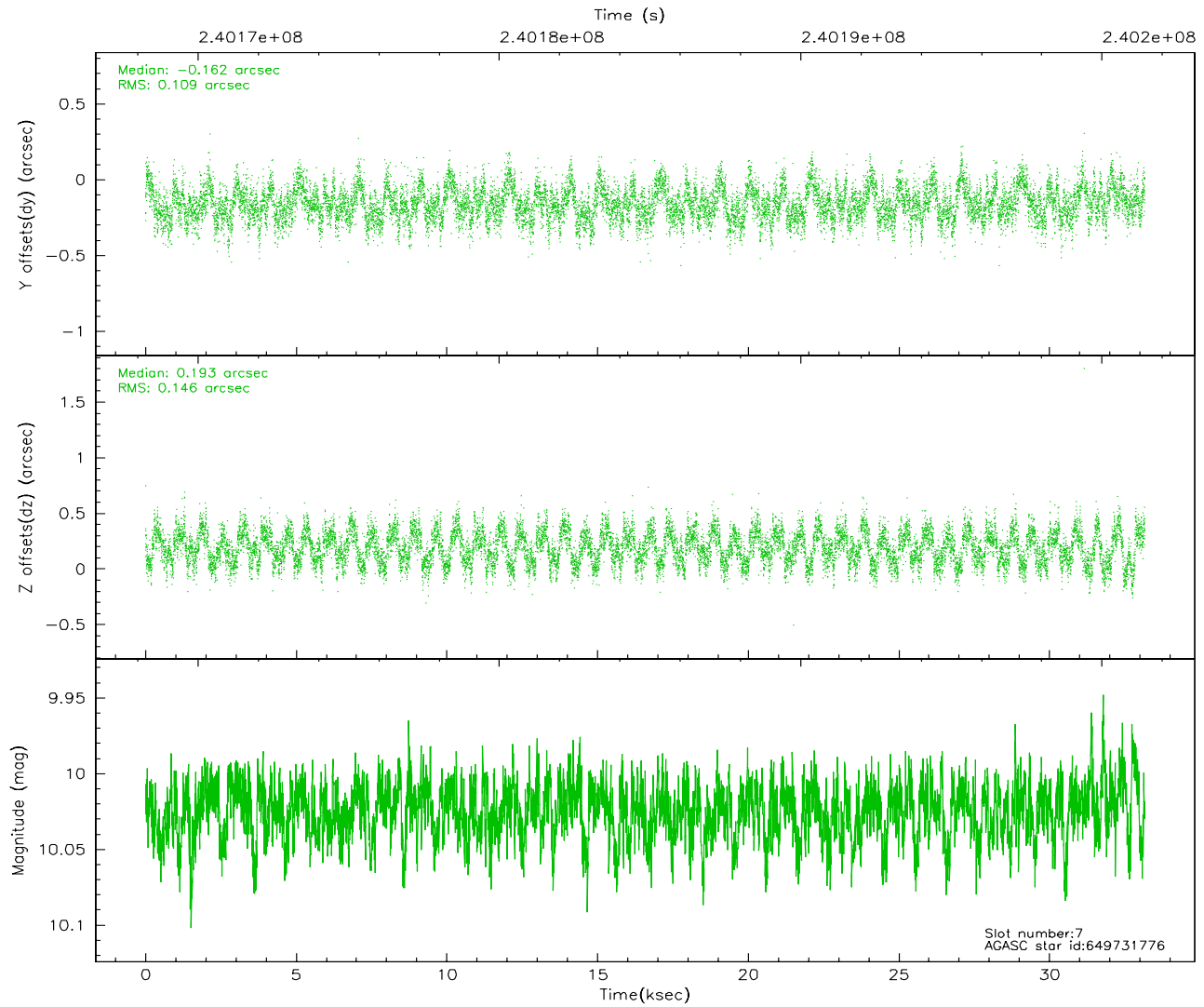
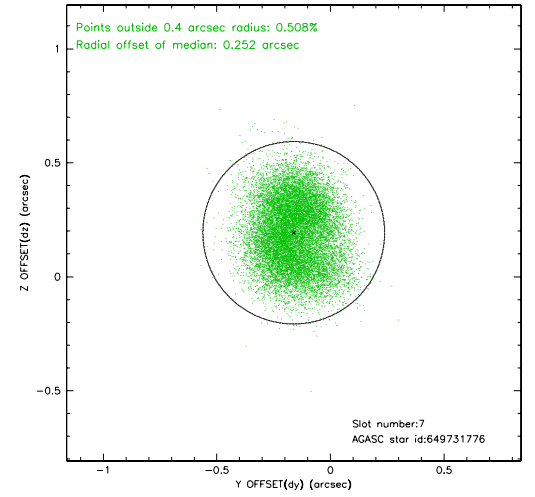
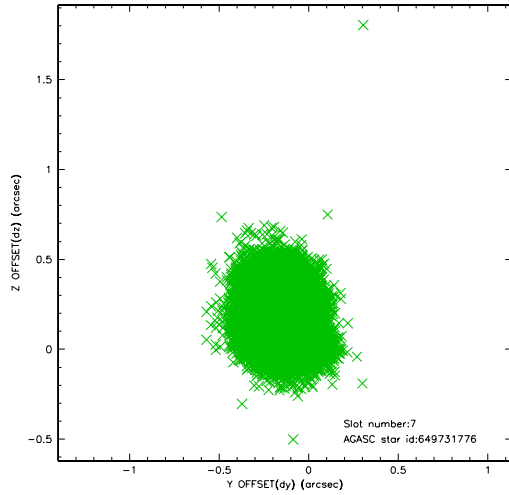
2.4.3 Slot 5



2.4.4 Slot 6

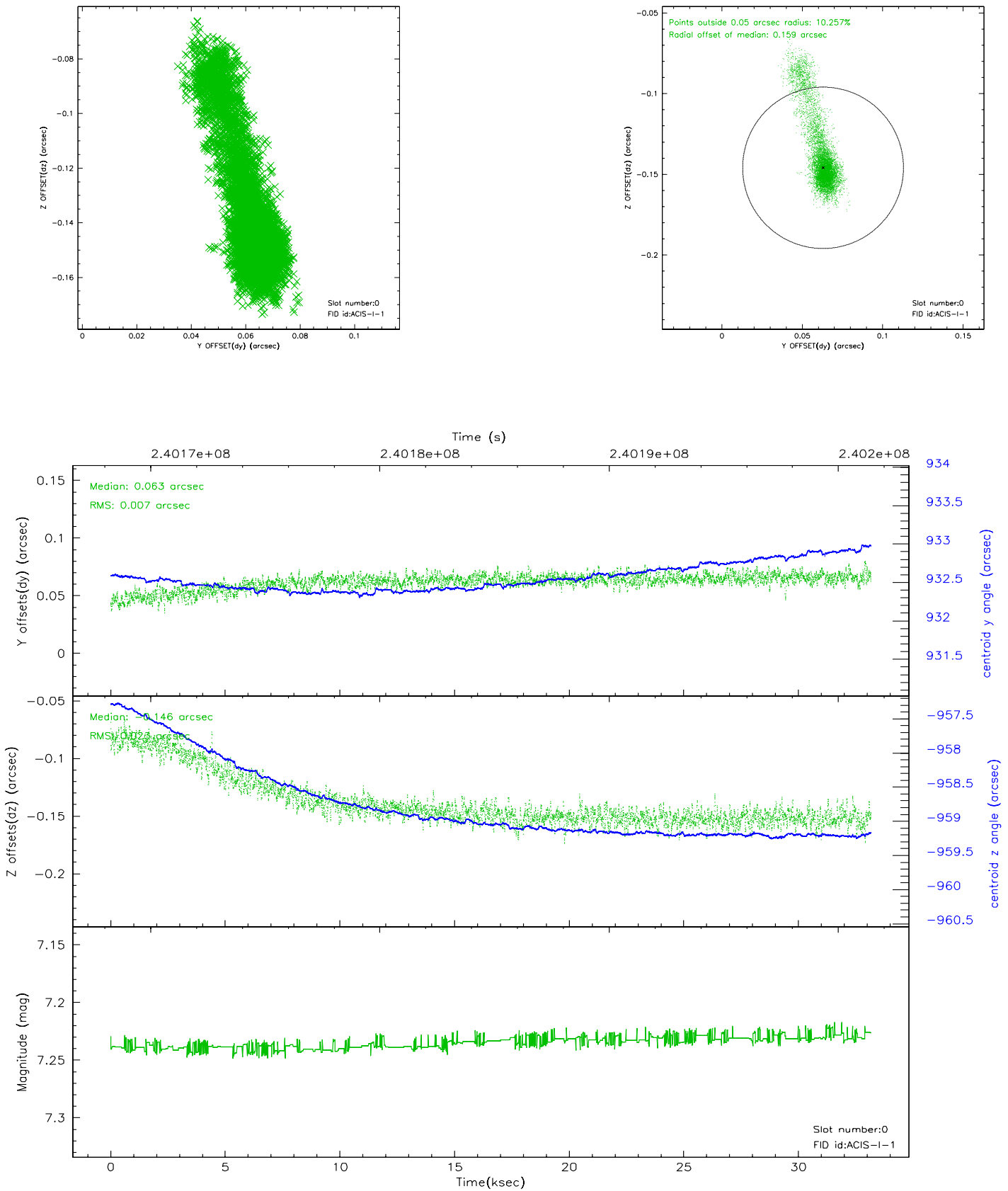


2.4.5 Slot 7

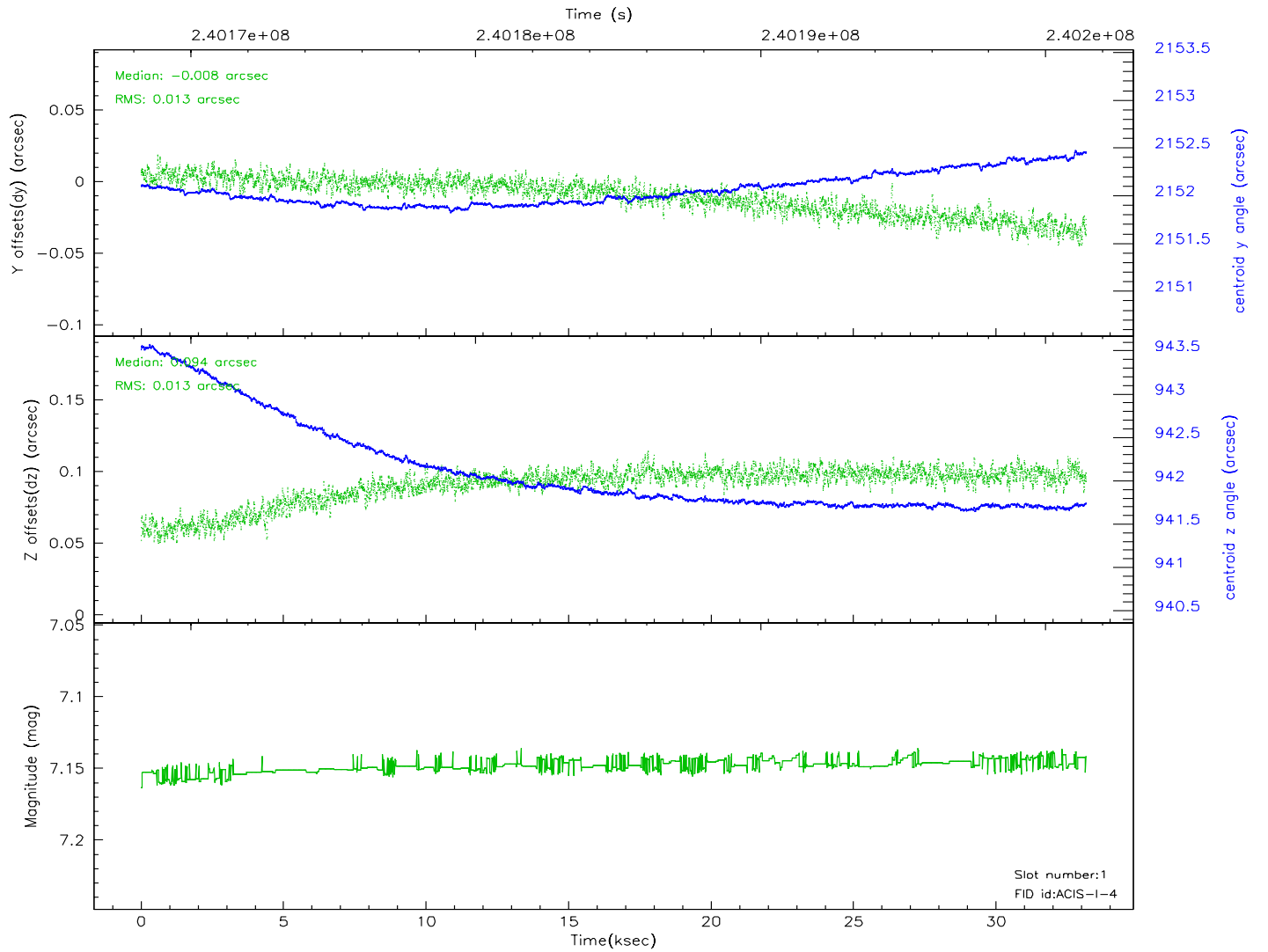
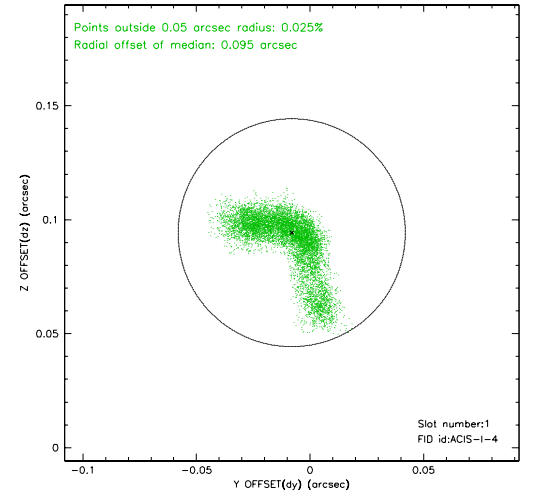
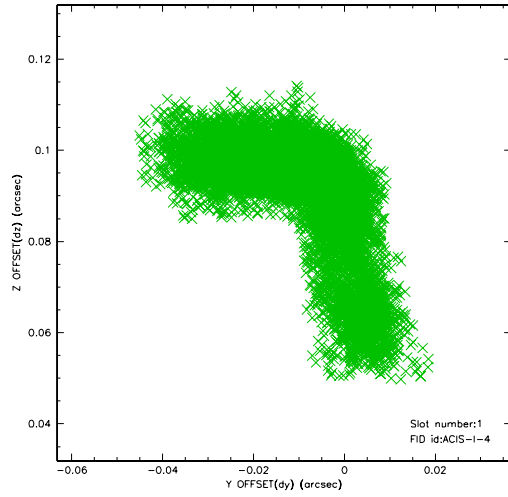


2.5 FID Slots

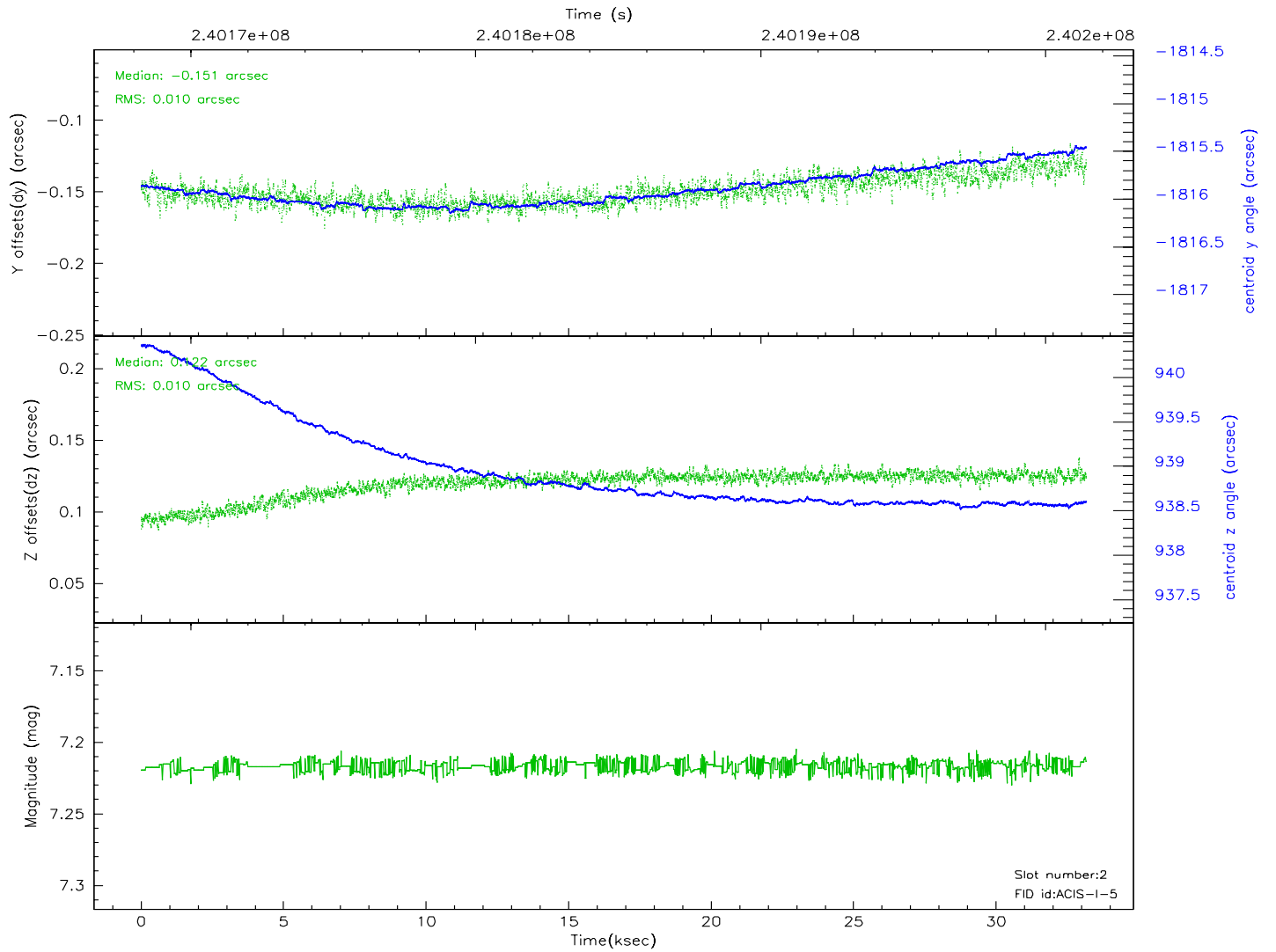
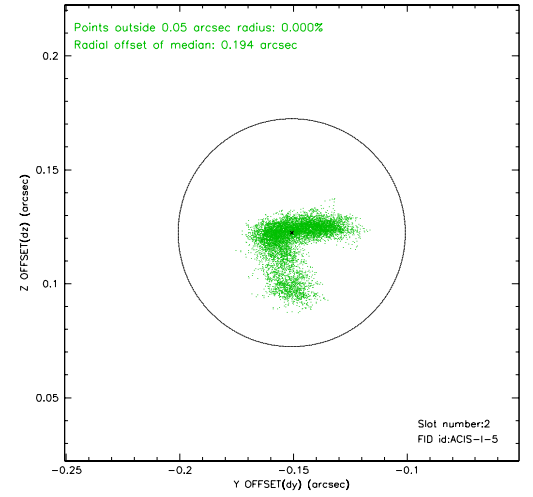
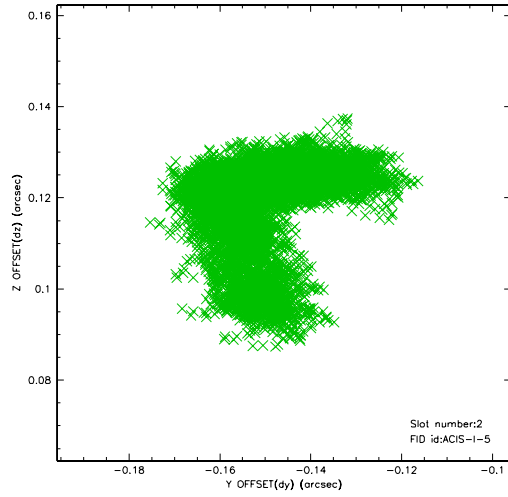
2.5.1 Slot 0



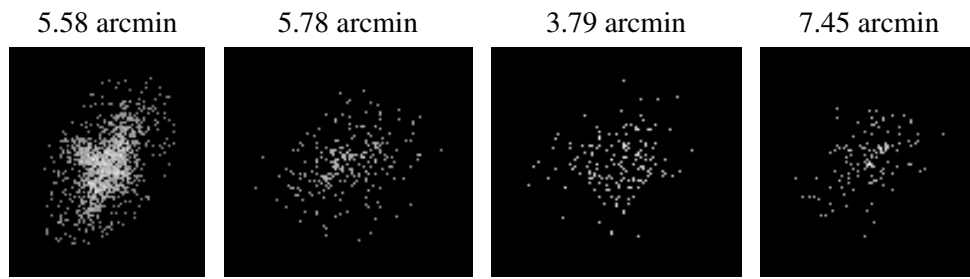
2.5.2 Slot 1



2.5.3 Slot 2



3 Point Sources



A Summary

A.1 Status

V&V Scientist	Jen Lauer
V&V Date (YYYY-MM-DD)	2006.03.20
V&V Edition	1
V&V Disposition and Status	OK
V&V Charge Time	33.08935

A.2 Comments