

# V&V Reference Report

## L2 ASCDS Version : 8.5.1.1

Observation 6295 - L2 Version 3  
Chandra X-Ray Center

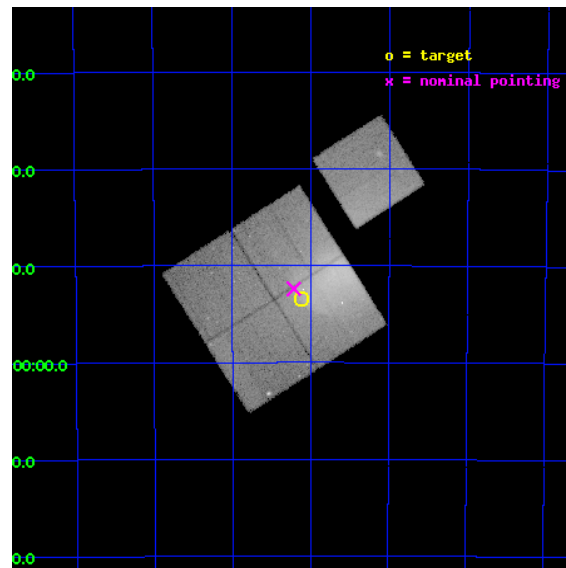
L2 Processing Date : Dec 24 2012

## Contents

<b>1</b>	<b>Front</b>	<b>2</b>
<b>2</b>	<b>OBI</b>	<b>3</b>
2.1	OBI . . . . .	3
2.1.1	Images . . . . .	3
2.1.2	Bias . . . . .	3
2.1.3	Parameters . . . . .	4
2.1.4	Events . . . . .	4
2.2	Compared Parameters . . . . .	5
2.3	Aspect . . . . .	6
2.4	Star Slots . . . . .	9
2.4.1	Slot 3 . . . . .	9
2.4.2	Slot 4 . . . . .	10
2.4.3	Slot 5 . . . . .	11
2.4.4	Slot 6 . . . . .	12
2.4.5	Slot 7 . . . . .	13
2.5	FID Slots . . . . .	14
2.5.1	Slot 0 . . . . .	14
2.5.2	Slot 1 . . . . .	15
2.5.3	Slot 2 . . . . .	16
<b>A</b>	<b>Summary</b>	<b>17</b>
A.1	Status . . . . .	17
A.2	Comments . . . . .	17

# 1 Front

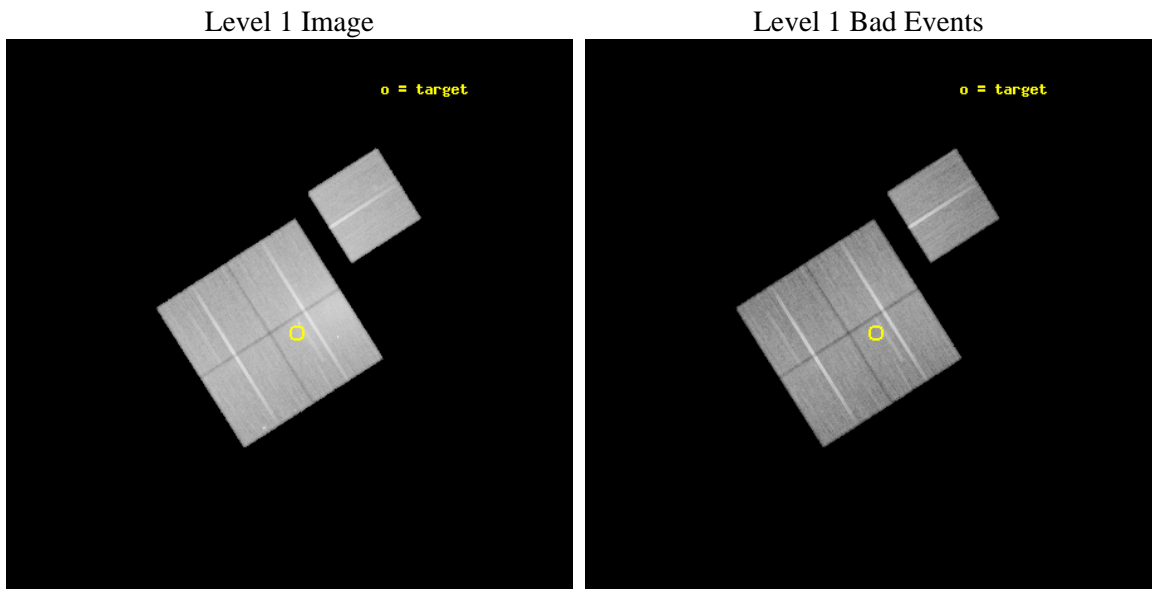
seq_num	800466	Sequence number
obs_id	6295	Observation id
title	A CHANDRA TREASURY OBSERVATION OF THE BEST EXAMPLE OF A CLUSTER COLD FRONT	Proposal title
observer	Dr. Alexey Vikhlinin	Principal investigator
object	Abell 3667	Source name
dtcycle	0	&#160
cycle	P	events from which exps? Prim/Second/Both
ra_targ	303.280208	Observer's specified target RA [deg]
dec_targ	-56.89	Observer's specified target Dec [deg]
ra_nom	303.3036902994	Nominal RA [deg]
dec_nom	-56.873336801928	Nominal Dec [deg]
roll_nom	57.5143967725	Nominal Roll [deg]
revision	3	Processing version of data
ontime	50144.348129332	Sum of GTIs [s]
livetime	49489.17530529	Livetime [s]
ontime0	50136.094962418	Sum of GTIs [s]
ontime1	50145.517913133	Sum of GTIs [s]
ontime2	50145.517953008	Sum of GTIs [s]
ontime3	50144.348129332	Sum of GTIs [s]
ontime6	50151.799903542	Sum of GTIs [s]
l2events	342658	Number of level 2 events



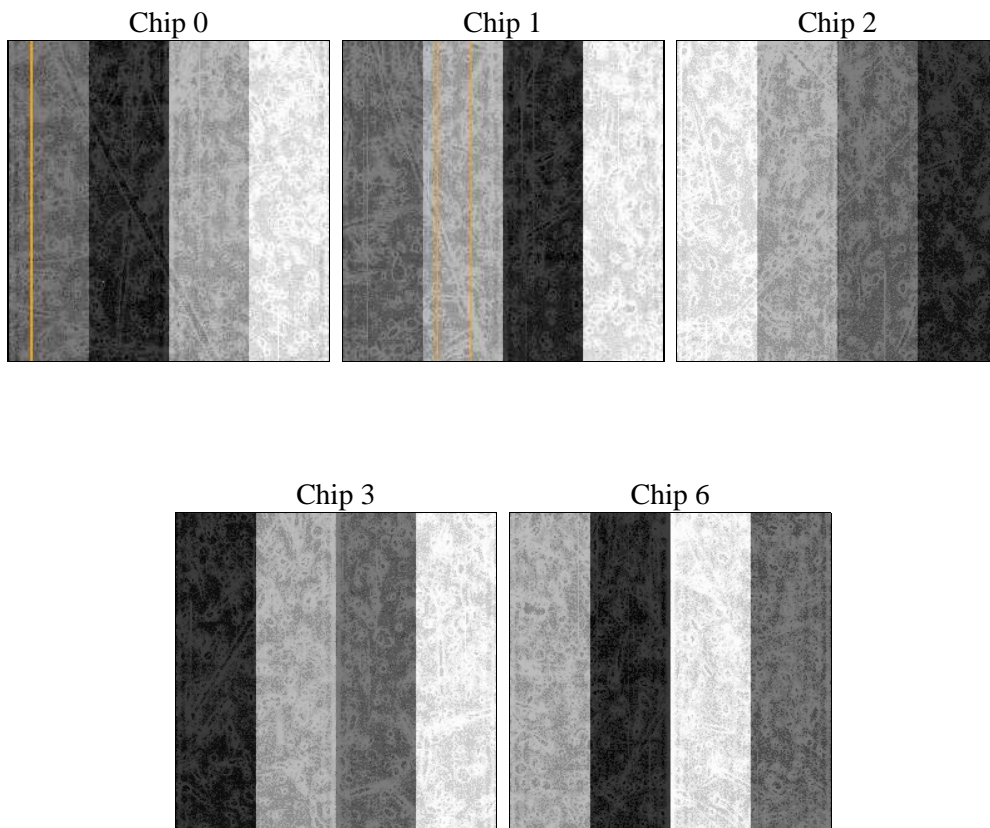
## 2 OBI

### 2.1 OBI

#### 2.1.1 Images



#### 2.1.2 Bias



### 2.1.3 Parameters

obi_num	0	Obi number	sched_exp_time	50000.000000	[s] Scheduled observation exposure time
ascdsver	8.5.1.1	Processing system revision	ontime	50144.348129332	Sum of GTIs [s]
caldbver	4.5.5	&#160	ontime0	50136.094962418	Sum of GTIs [s]
date	2012-12-24T16:30:14	Date and time of file creation	ontime1	50145.517913133	Sum of GTIs [s]
revision	3	Processing version of data	ontime2	50145.517953008	Sum of GTIs [s]
			ontime3	50144.348129332	Sum of GTIs [s]
			ontime6	50151.799903542	Sum of GTIs [s]
			l1events	1796571	Number of level 1 events

### 2.1.4 Events

	ccd 0	ccd 1	ccd 2	ccd 3	ccd 6		ccd 0	ccd 1	ccd 2	ccd 3	ccd 6
level 1 events	308124	318095	379409	437503	353440	grade 0 events	20217	23039	50850	105107	40101
rejected events	265412	271037	300733	293142	286490		6%	7%	13%	24%	11%
rejected %	86%	85%	79%	67%	81%	grade 1 events	192	225	382	653	264
							0%	0%	0%	0%	0%
						grade 2 events	8888	8980	12135	17830	10617
							2%	2%	3%	4%	3%
						grade 3 events	4135	4258	4851	6924	4797
							1%	1%	1%	1%	1%
						grade 4 events	3905	4394	4979	7038	4673
							1%	1%	1%	1%	1%
						grade 5 events	11668	12308	11065	13212	12823
							3%	3%	2%	3%	3%
						grade 6 events	6520	7498	6932	8752	7889
							2%	2%	1%	2%	2%
						grade 7 events	252599	257393	288215	277987	272276
							81%	80%	75%	63%	77%

## 2.2 Compared Parameters

Parameter	Planned	Actual	Parameter	Planned	Actual
Instrument	ACIS	ACIS	Obspar format version number	7	7
Detector	ACIS-01236	ACIS-01236	Obspar file type	PREDICTED	ACTUAL
Grating	NONE	NONE	Obspar update status	NONE	UPDATED
Data mode	VFAINT	VFAINT	Number of optional ACIS chips dropped	0	0
Observation mode	POINTING	POINTING	On-chip summing requested	N	N
[deg] Pointing RA	303.301711	303.3036902993967	Subarray requested	NONE	NONE
[deg] Pointing Dec	-56.900714	-56.87333680192778	Alternating exposures requested	N	N
[deg] Pointing Roll	57.304058	57.51439677249987	[s] Primary exposure time	0.000000	3.1
[mm] SIM focus pos	-0.782348	-0.7809083437167272			
[mm] SIM defocus	0	0.001439871863259334			
[mm] SIM translation stage pos	-228.592463	-228.5990329025337			
[mm] SIM translation stage offset	-5	-4.993420100396037			
[s] Observation start time (MET)	235204300.184000	235202601.28481			
Observation start date	2005-06-15T06:30:36	2005-06-15T06:03:21			
[s] Observation end time (MET)	235254300.184000	235254954.6997			
Observation end date	2005-06-15T20:23:56	2005-06-15T20:35:54			
Read mode	TIMED	TIMED			

## 2.3 Aspect

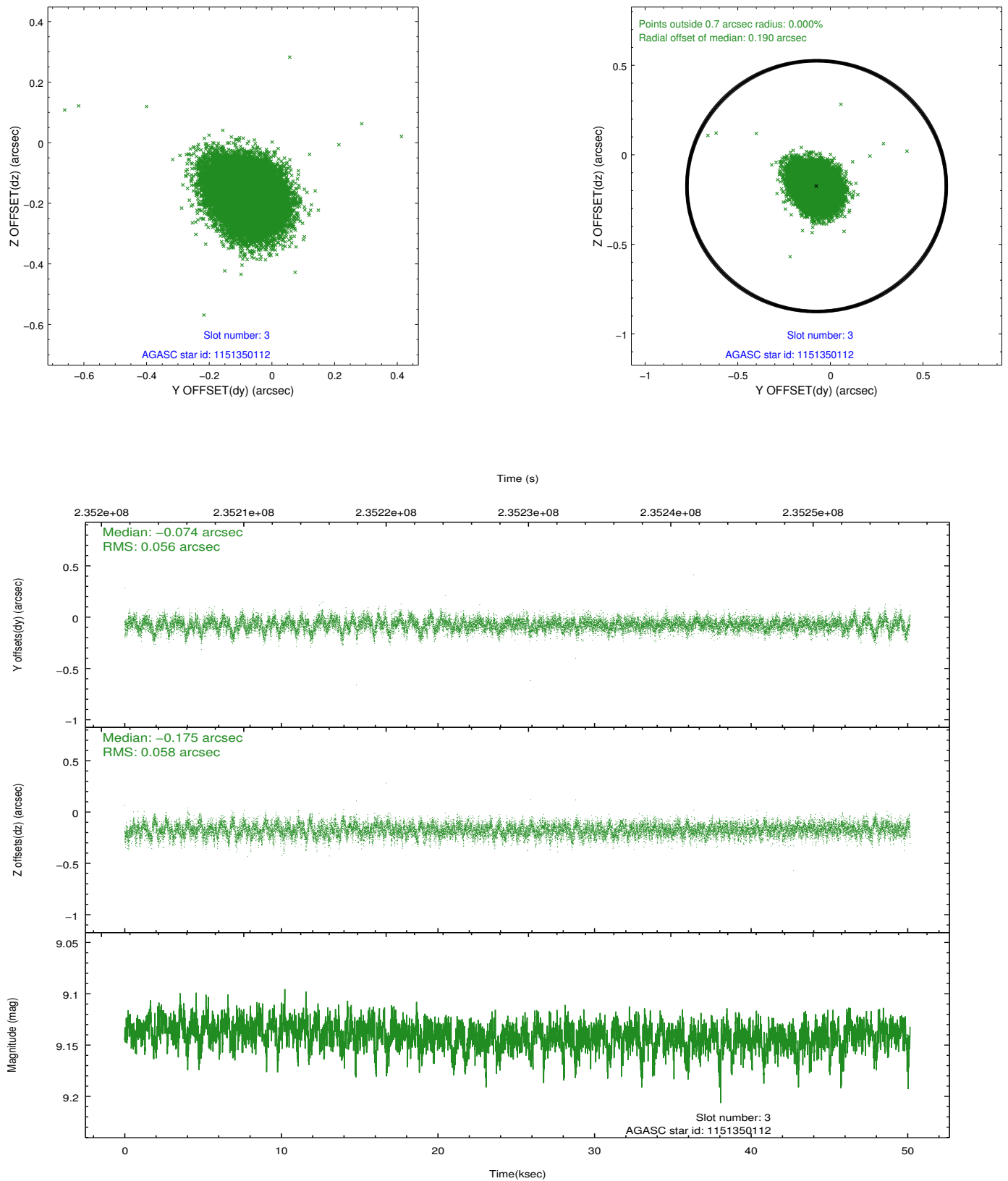


### Slot Statistics

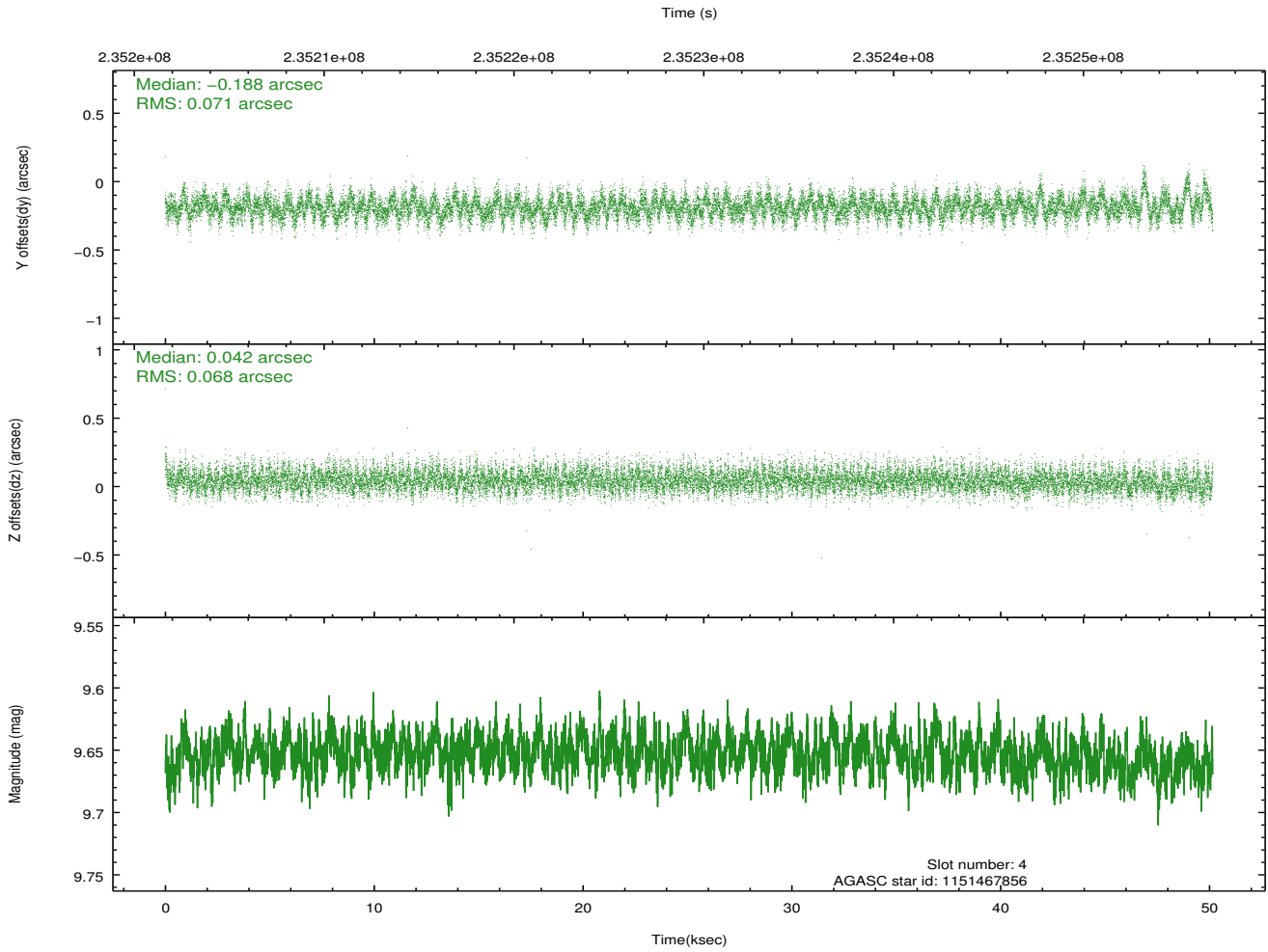
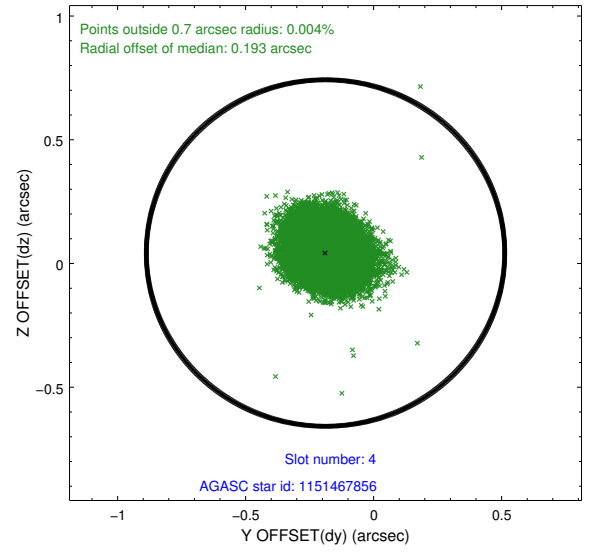
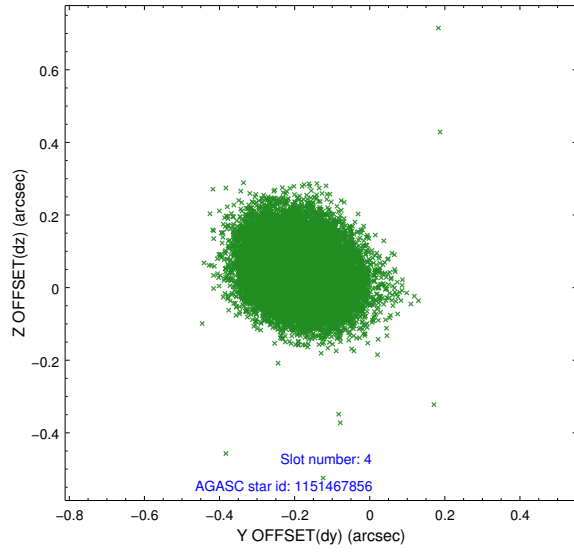
slot	status	id	mag	n_pts	med_dy	med_dz	dr1	dr2	ra	dec	mean_y	mean_z
0	FID	ACIS-I-4	7.15	12234	0.024	0.091	0.016	0.030	0.000000	0.000000	2152.37	964.22
1	FID	ACIS-I-5	7.23	12236	-0.191	0.052	0.010	0.016	0.000000	0.000000	-1815.54	961.25
2	FID	ACIS-I-6	7.26	12236	0.070	-0.075	0.014	0.026	0.000000	0.000000	398.30	1605.49
3	GUIDE	1151350112	9.14	24457	-0.074	-0.175	0.085	0.141	303.241865	-56.846660	100.42	204.18
4	GUIDE	1151467856	9.65	24443	-0.188	0.042	0.104	0.170	303.931677	-56.775960	1044.67	-806.08
5	GUIDE	1151471240	9.45	24448	0.167	0.015	0.087	0.140	303.425045	-57.451391	-1538.85	-1271.94
6	GUIDE	1151472992	9.62	24450	0.002	0.167	0.100	0.160	303.531180	-57.237033	-777.70	-1030.42
7	GUIDE	1151340776	9.13	24455	0.094	-0.047	0.071	0.118	302.320116	-57.331751	-2347.24	759.60

## 2.4 Star Slots

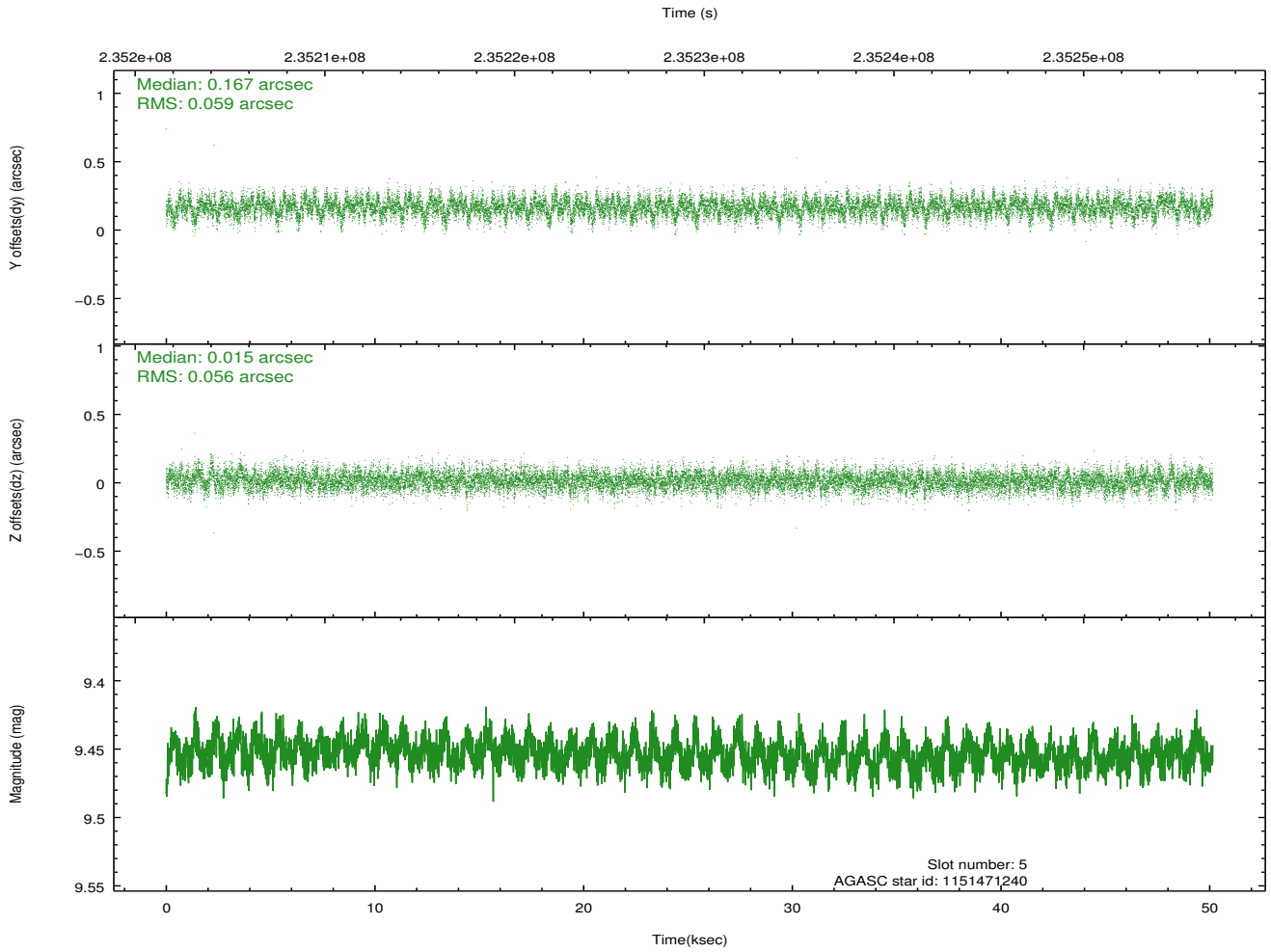
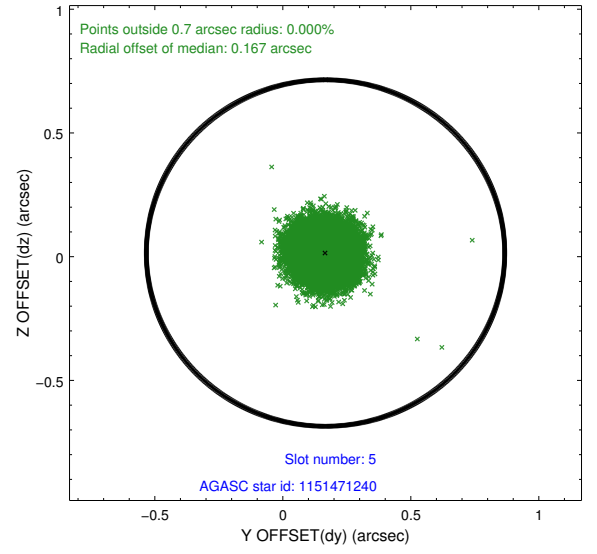
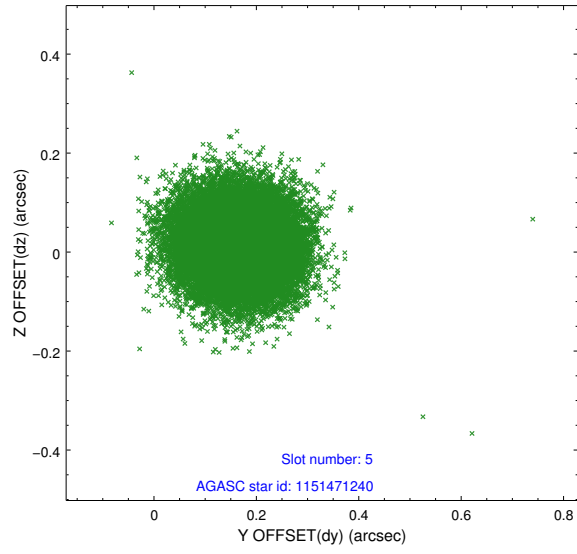
### 2.4.1 Slot 3



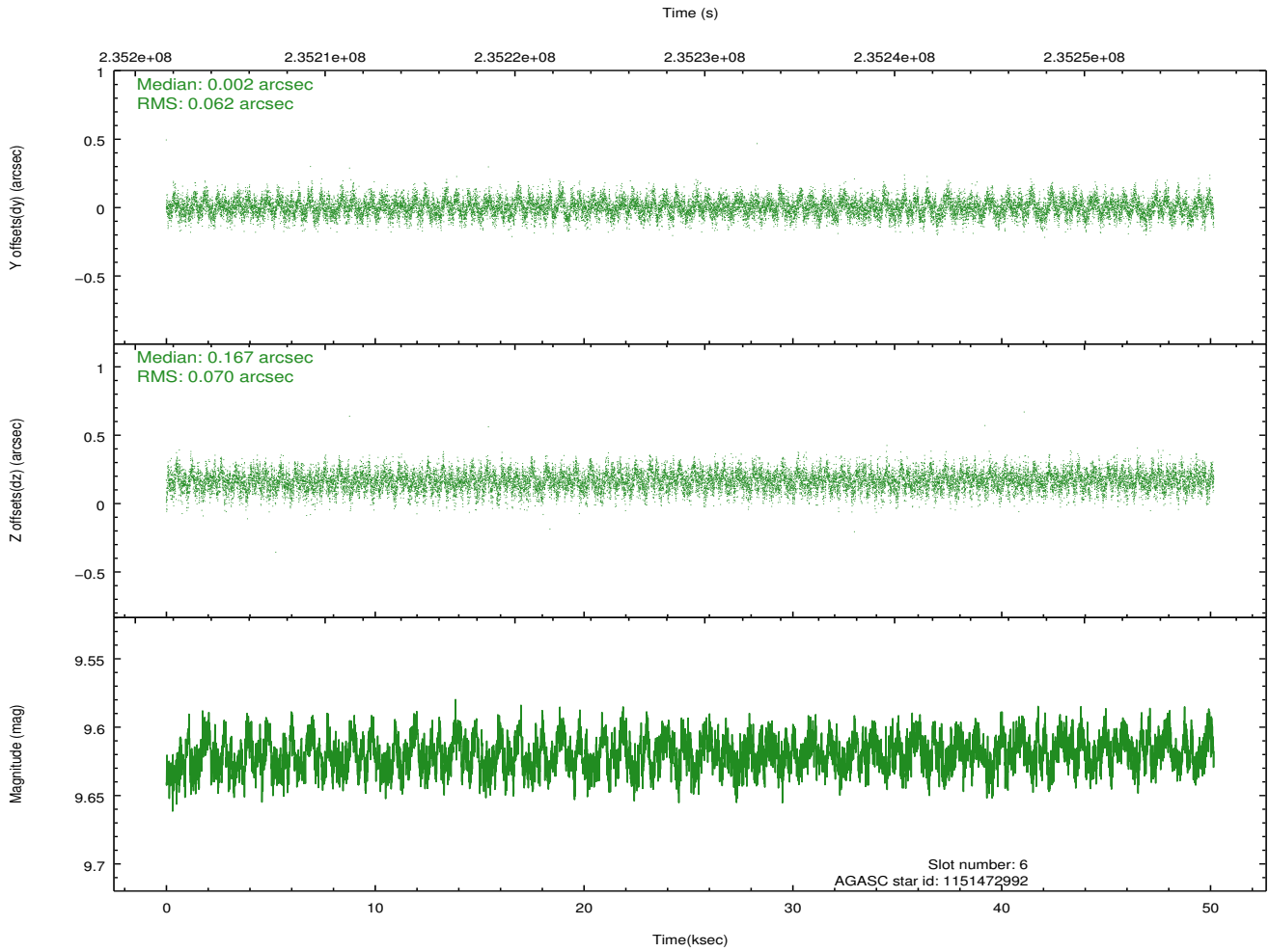
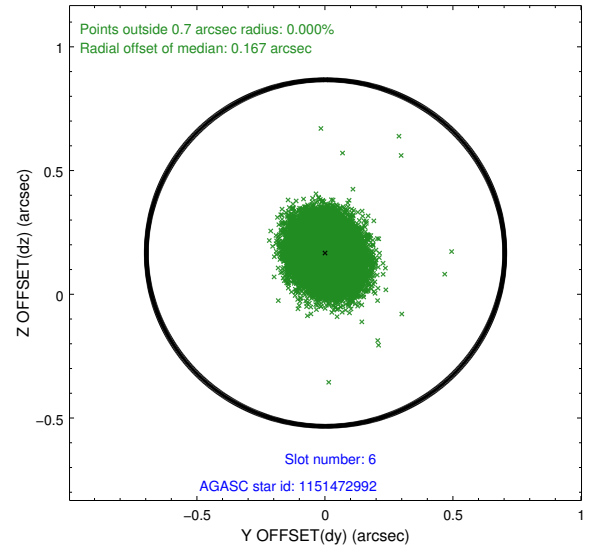
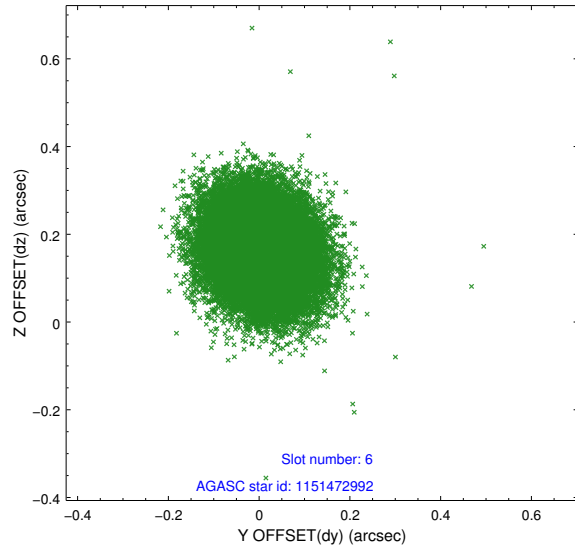
### 2.4.2 Slot 4



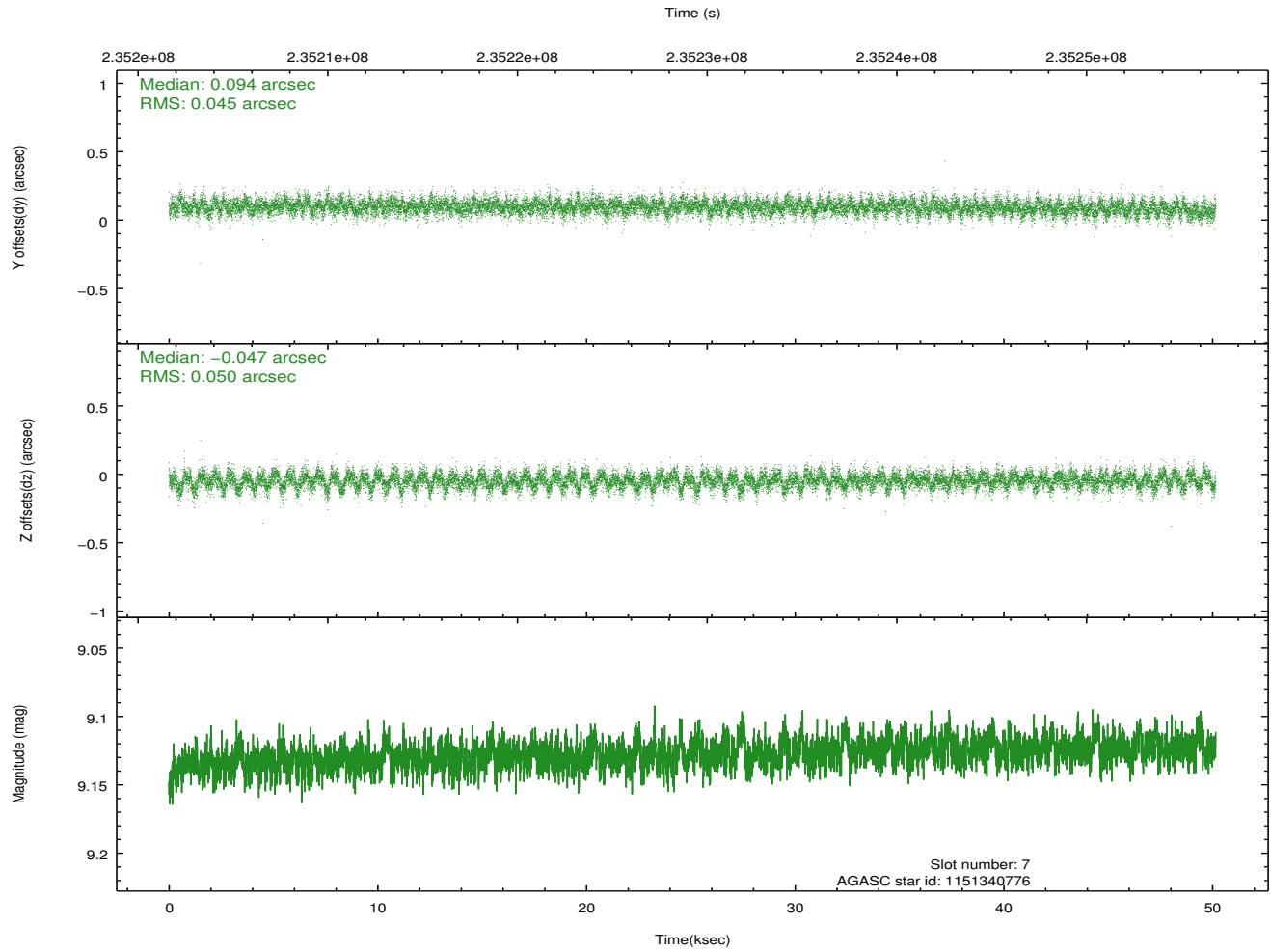
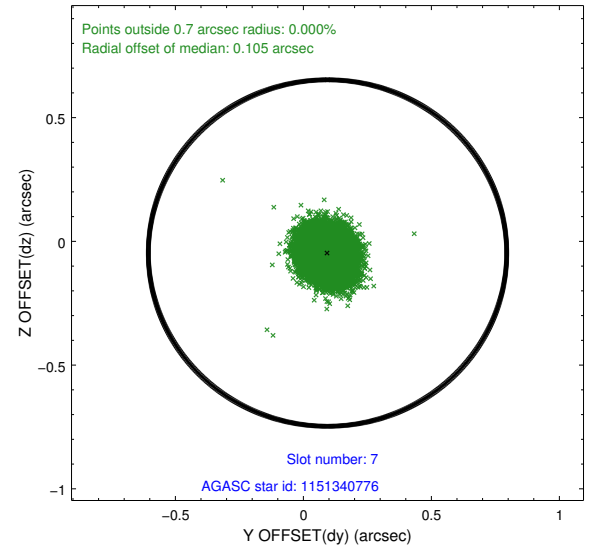
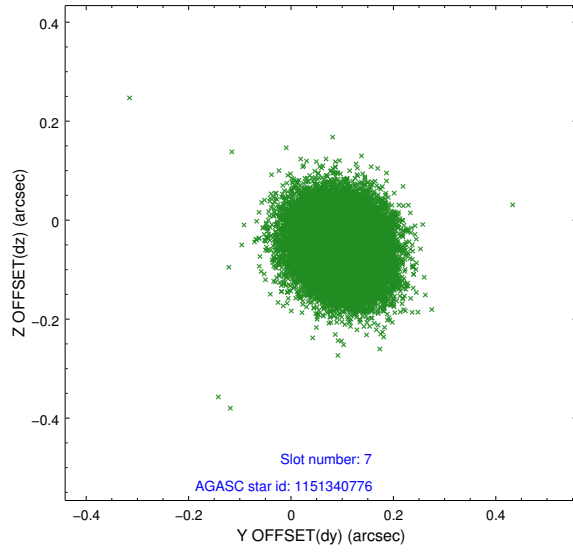
### 2.4.3 Slot 5



## 2.4.4 Slot 6

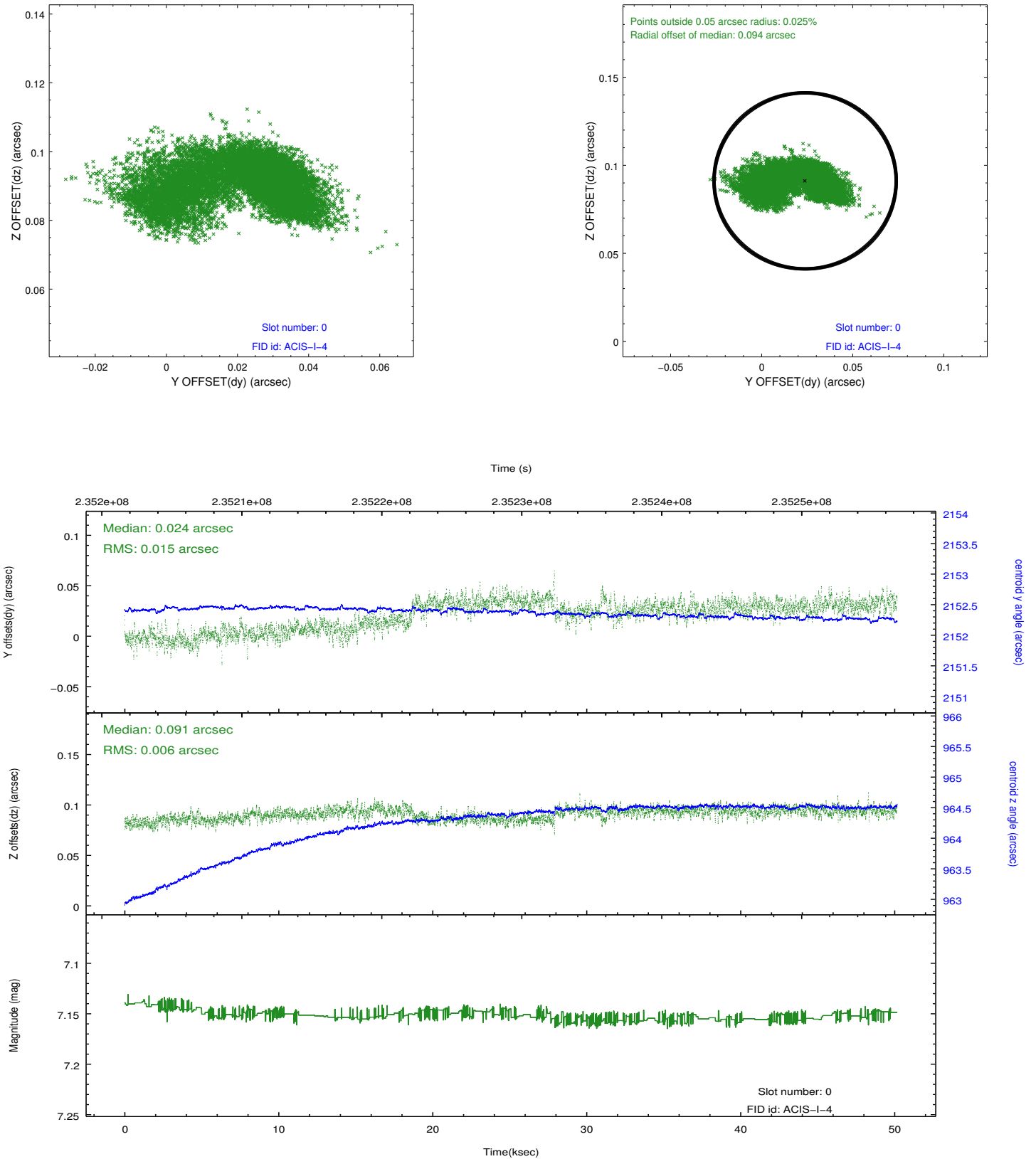


## 2.4.5 Slot 7

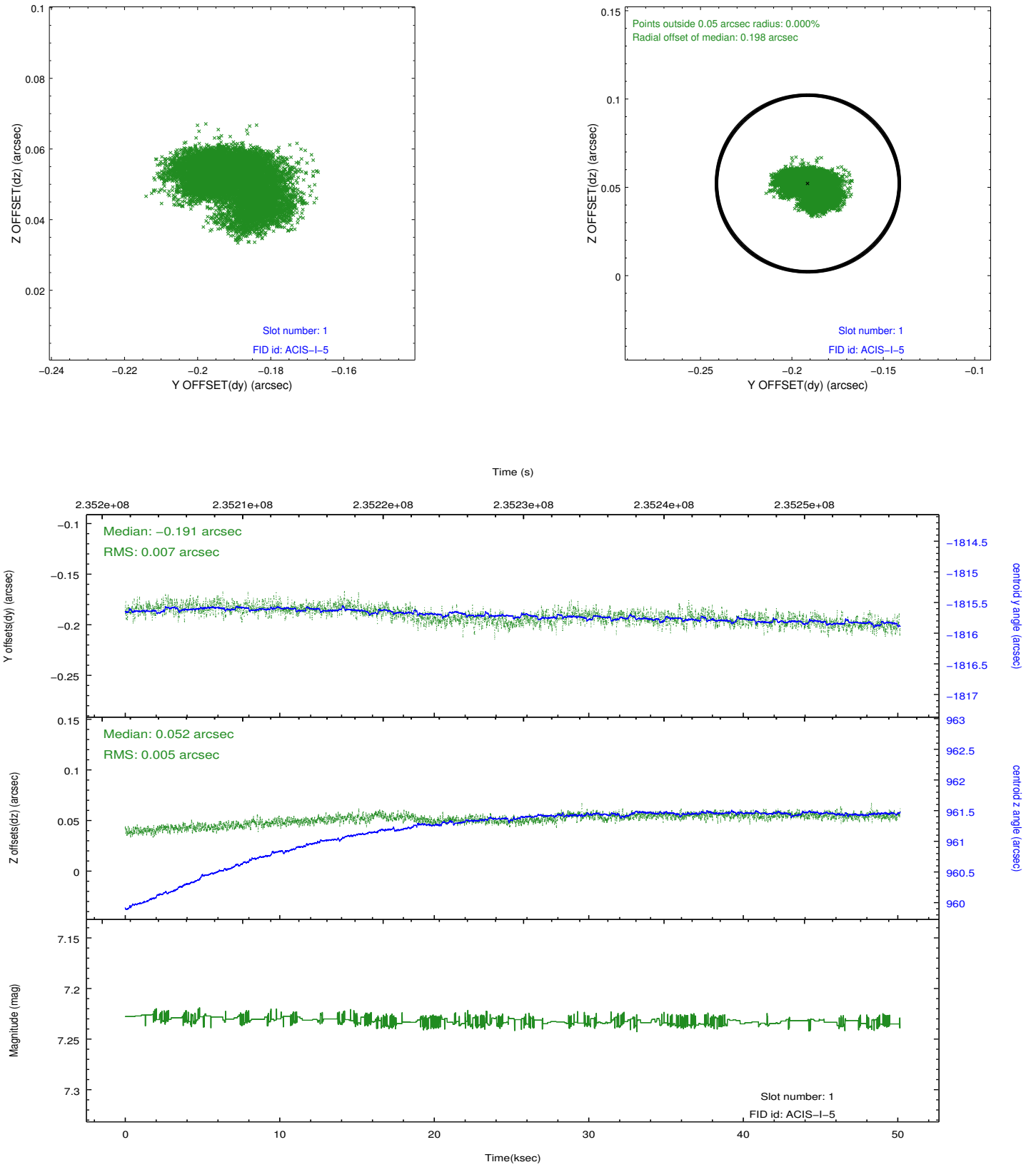


## 2.5 FID Slots

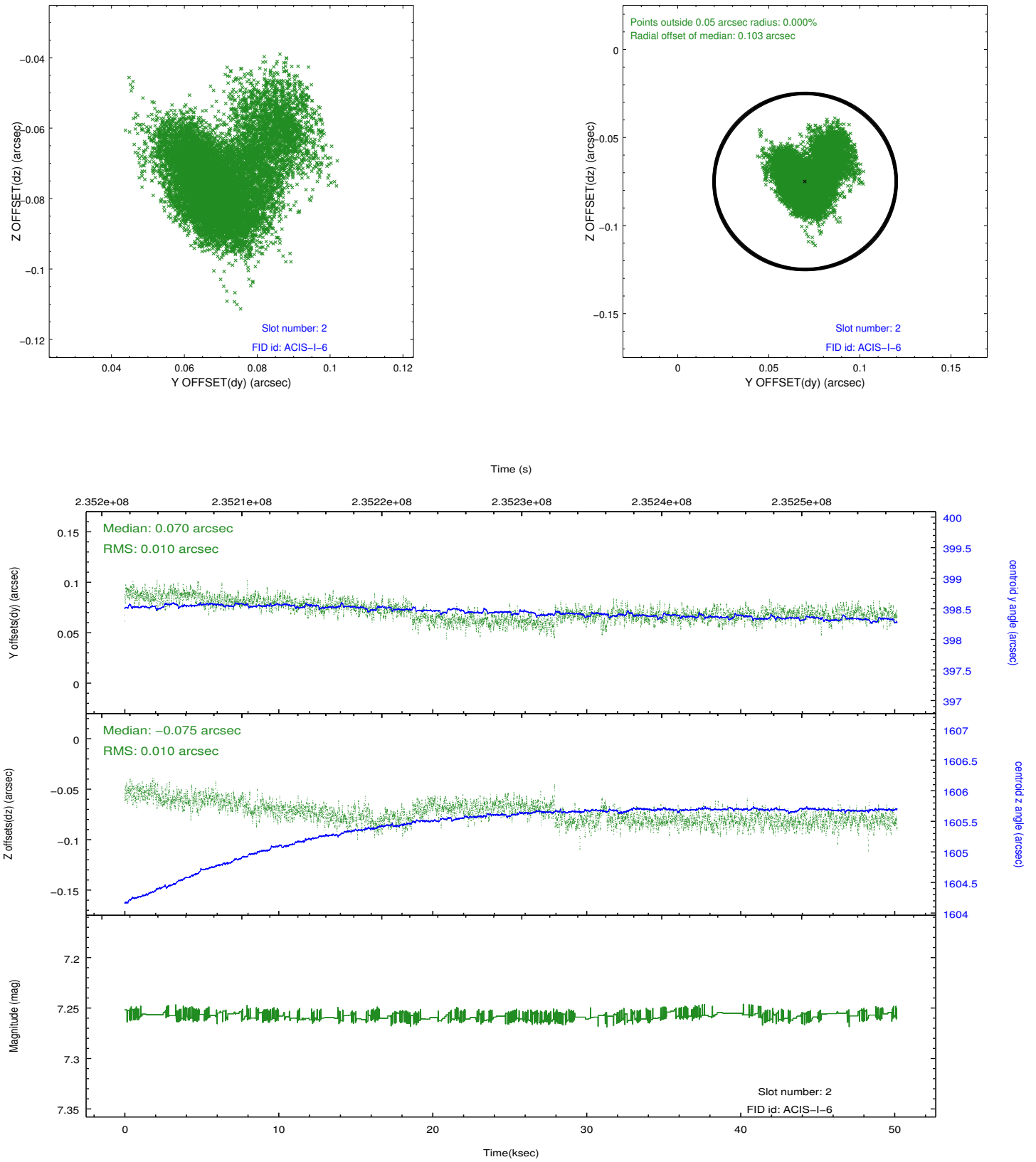
### 2.5.1 Slot 0



## 2.5.2 Slot 1



### 2.5.3 Slot 2



## A Summary

### A.1 Status

V&V Scientist	Jen Lauer
V&V Date (YYYY-MM-DD)	2013.01.17
V&V Edition	1
V&V Disposition and Status	OK
V&V Charge Time	50.14509

### A.2 Comments