

# V&V Reference Report

## L2 ASCDS Version : 7.6.7.1

Observation 6263 - L2 Version 002  
Chandra X-Ray Center

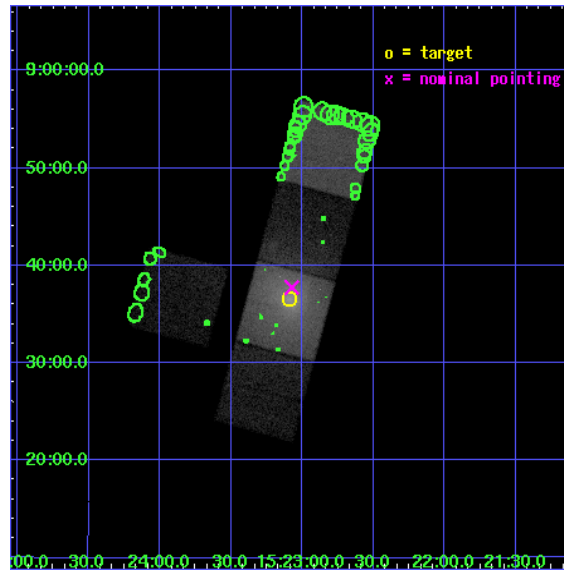
L2 Processing Date : Mar 17 2006

## Contents

<b>1</b>	<b>Front</b>	<b>2</b>
<b>2</b>	<b>OBI</b>	<b>3</b>
2.1	OBI . . . . .	3
2.1.1	Images . . . . .	3
2.1.2	Bias . . . . .	3
2.1.3	Parameters . . . . .	4
2.1.4	Events . . . . .	4
2.2	Compared Parameters . . . . .	5
2.3	Aspect . . . . .	6
2.4	Star Slots . . . . .	9
2.4.1	Slot 3 . . . . .	9
2.4.2	Slot 4 . . . . .	10
2.4.3	Slot 5 . . . . .	11
2.4.4	Slot 6 . . . . .	12
2.4.5	Slot 7 . . . . .	13
2.5	FID Slots . . . . .	14
2.5.1	Slot 0 . . . . .	14
2.5.2	Slot 1 . . . . .	15
2.5.3	Slot 2 . . . . .	16
<b>3</b>	<b>Point Sources</b>	<b>17</b>
<b>A</b>	<b>Summary</b>	<b>18</b>
A.1	Status . . . . .	18
A.2	Comments . . . . .	18

# 1 Front

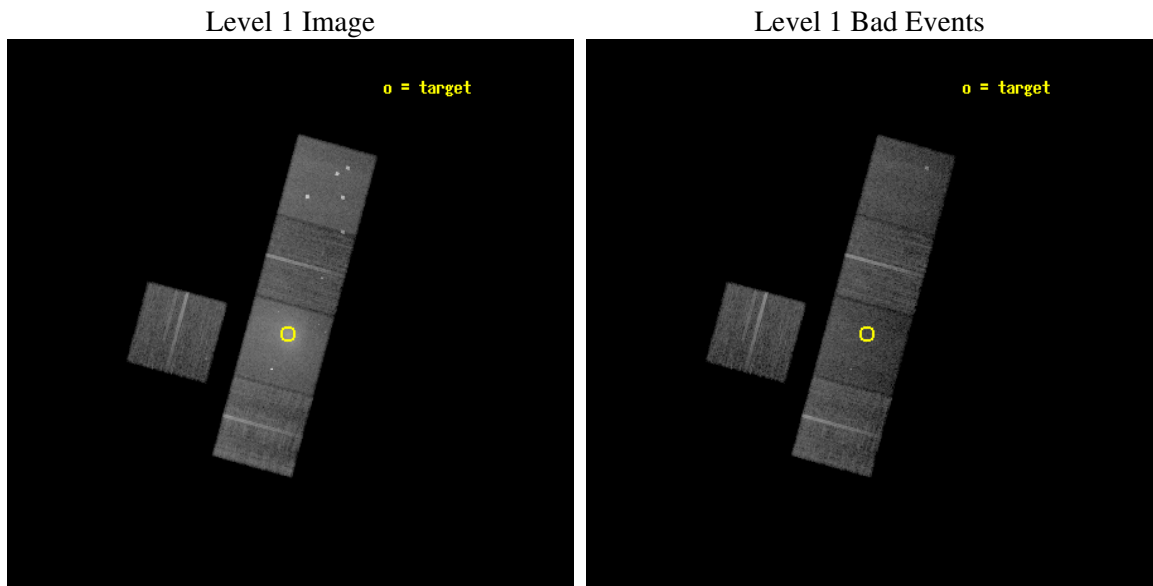
seq_num	800508
obs_id	6263
title	The Interaction between Cluster Central Radio Sources and Cooling Flows
observer	Dr. Craig Sarazin
object	A2063
dtcycle	0
cycle	P
ra_targ	230.772083
dec_targ	8.608861
ra_nom	230.7682918964
dec_nom	8.6292722055454
roll_nom	105.15721422786
revision	2
ontime	17000.399967313
livetime	16778.277226227
ontime3	17000.399967313
ontime5	17000.399967313
ontime6	17000.399967313
ontime7	17000.399967313
ontime8	17000.399967313
l2events	235719



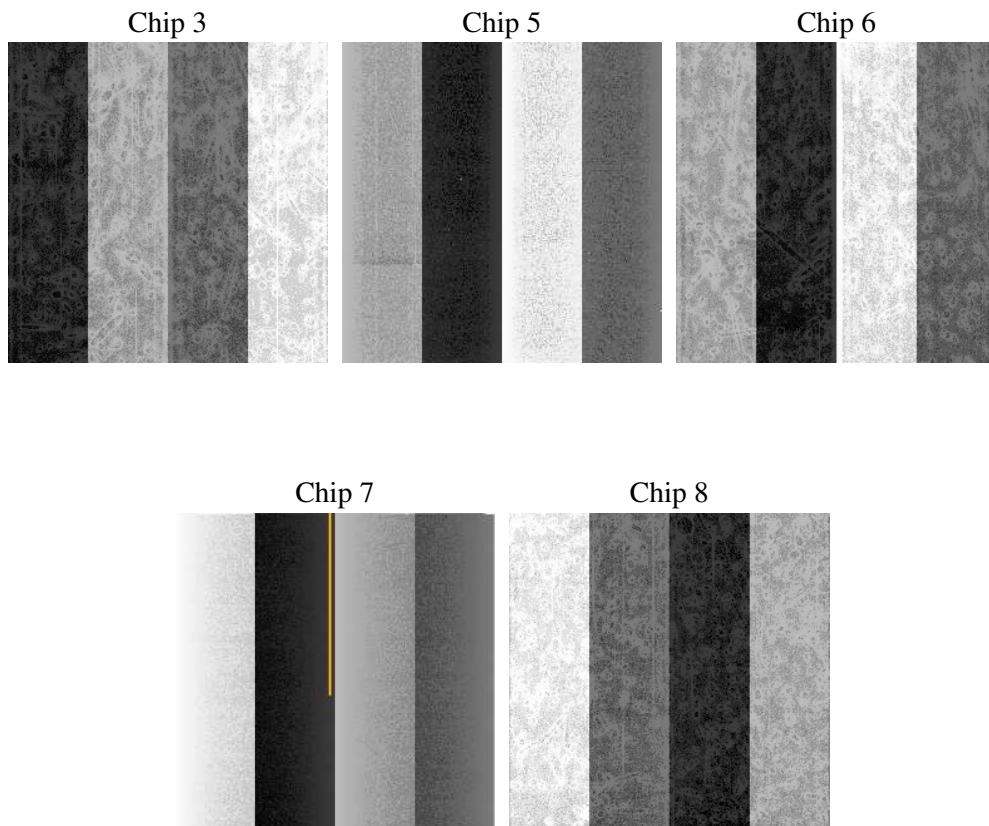
## 2 OBI

### 2.1 OBI

#### 2.1.1 Images



#### 2.1.2 Bias



### 2.1.3 Parameters

obi_num	0
ascdsver	7.6.7.1
caldsver	3.2.1
date	2006-03-17T20:29:05
revision	2

sched_exp_time	17000.000000
ontime	17043.131743759
ontime3	17043.131743759
ontime5	17043.131763667
ontime6	17043.131743759
ontime7	17043.131743759
ontime8	17043.131743759
l1events	700609

### 2.1.4 Events

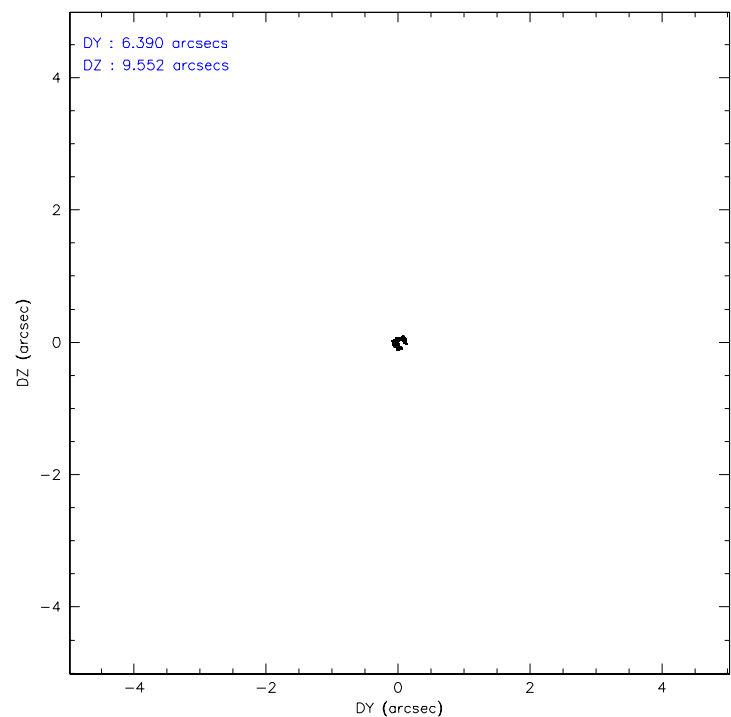
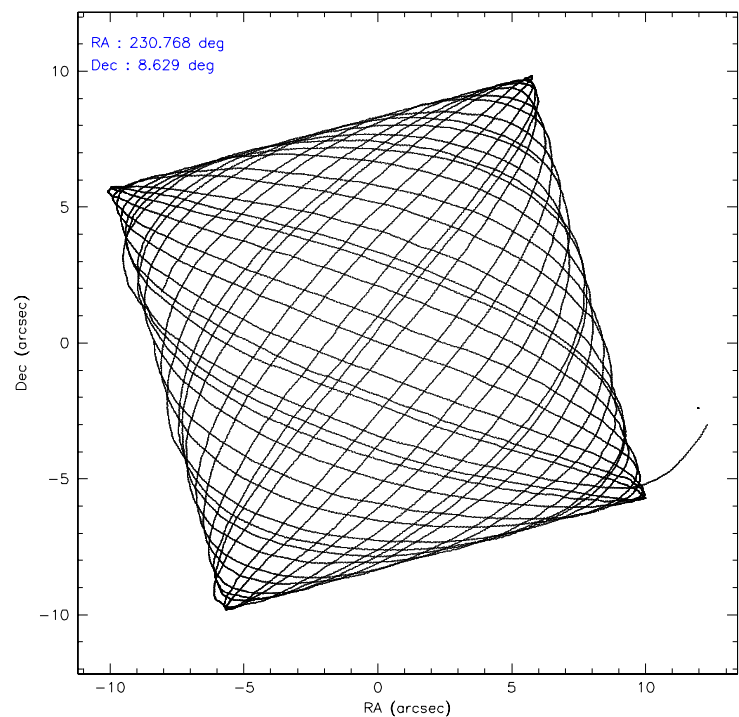
	ccd 3	ccd 5	ccd 6	ccd 7	ccd 8
level 1 events	103277	153985	114002	195967	133378
rejected events	91321	74894	92372	68284	99678
rejected %	88%	48%	81%	34%	74%

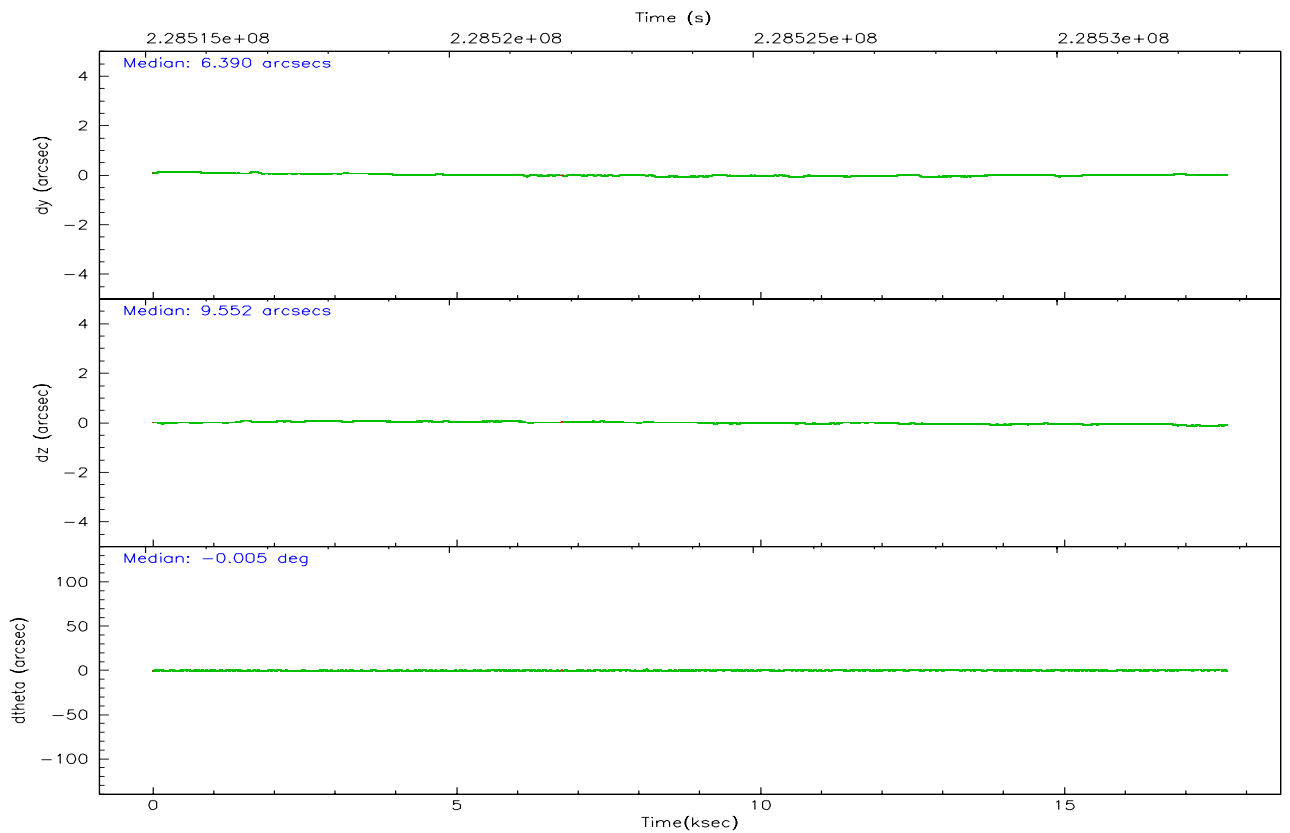
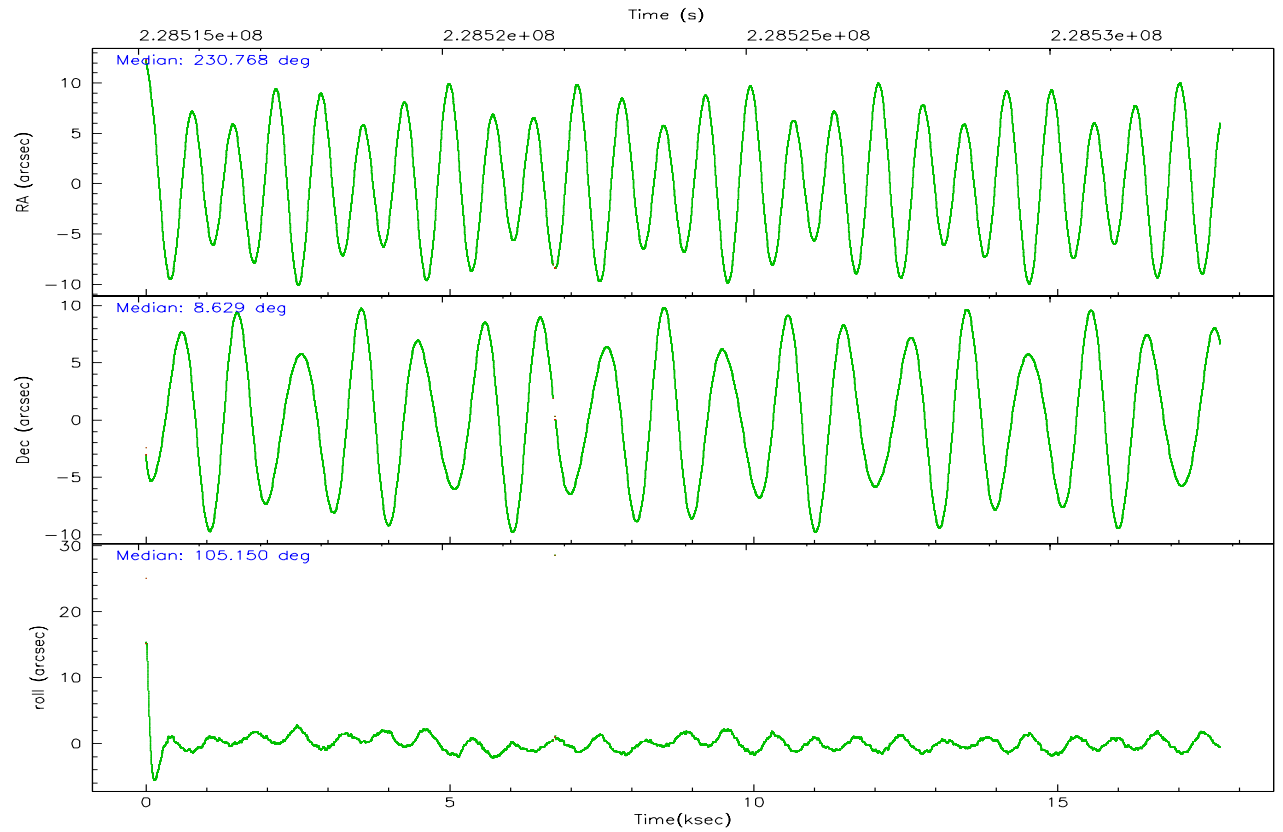
	ccd 3	ccd 5	ccd 6	ccd 7	ccd 8
grade 0 events	5272	15319	12823	25673	12054
	5%	9%	11%	13%	9%
grade 1 events	62	606	71	92	103
	0%	0%	0%	0%	0%
grade 2 events	2323	21797	3377	34977	7198
	2%	14%	2%	17%	5%
grade 3 events	1249	1960	1498	11618	3377
	1%	1%	1%	5%	2%
grade 4 events	1109	1982	1486	11184	3110
	1%	1%	1%	5%	2%
grade 5 events	4124	7421	4271	9394	6077
	3%	4%	3%	4%	4%
grade 6 events	2033	38247	2512	44540	8075
	1%	24%	2%	22%	6%
grade 7 events	87105	66653	87964	58489	93384
	84%	43%	77%	29%	70%

## 2.2 Compared Parameters

Parameter	Planned	Actual	Parameter	Planned	Actual
Instrument	ACIS	ACIS	Obspar format version number	6	6
Detector	ACIS-35678	ACIS-35678	Obspar file type	PREDICTED	ACTUAL
Grating	NONE	NONE	Obspar update status	NONE	UPDATED
Data mode	VFAINT	VFAINT	On-chip summing requested	N	N
Observation mode	POINTING	POINTING	Subarray requested	NONE	NONE
Pointing RA	230.788090	230.7682918964008	Alternating exposures requested	N	N
Pointing Dec	8.610335	8.629272205545369	Primary exposure time	0.000000	3.1
Pointing Roll	104.997600	105.1572142278576			
SIM focus pos (mm)	-0.684267	-0.6828225247311905			
SIM defocus (mm)	0	0.001444936568705701			
SIM translation stage pos (mm)	-190.132523	-190.1400660498719			
SIM translation stage offset (mm)	0	0.00754346686406393			
Observation start time	228515801.184000	228514626.14282			
Observation start date	2005-03-29T20:35:37	2005-03-29T20:17:06			
Observation end time	228532801.184000	228533250.39366			
Observation end date	2005-03-30T01:18:57	2005-03-30T01:27:30			
Read mode	TIMED	TIMED			

2.3 Aspect





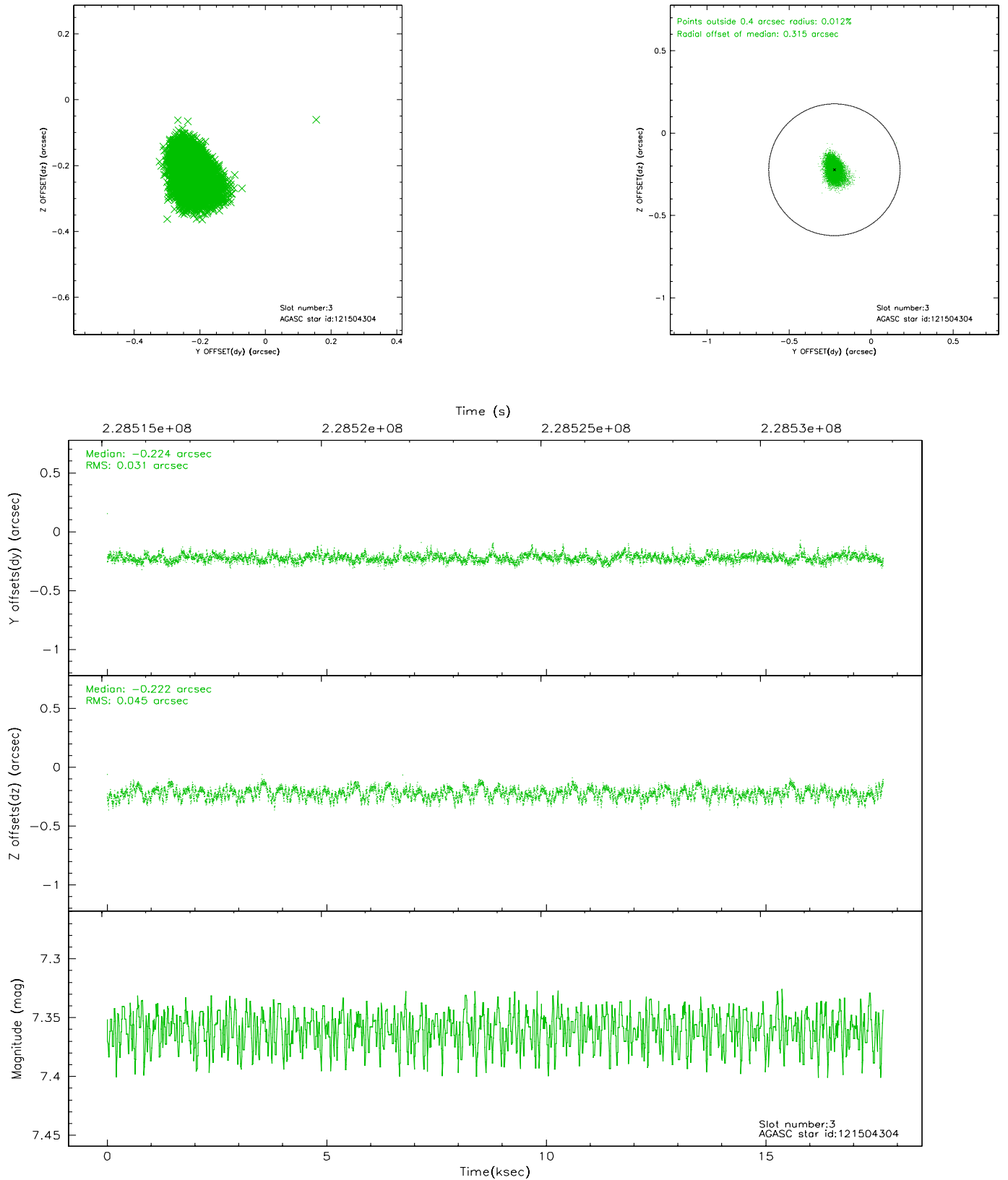
### Slot Statistics

slot	status	id	mag	n_pts	med_dy	med_dz	dr1	dr2	ra	dec	mean_y	mean_z
0	FID	ACIS-S-2	7.10	4305	-0.048	-0.009	0.006	0.011	0.000000	0.000000	-759.15	-1730.80
1	FID	ACIS-S-4	7.21	4304	0.053	0.025	0.005	0.008	0.000000	0.000000	2154.09	177.52
2	FID	ACIS-S-5	7.23	4303	-0.037	-0.007	0.006	0.011	0.000000	0.000000	-1811.71	171.36
3	GUIDE	121504304	7.36	8607	-0.224	-0.222	0.057	0.095	230.179446	8.913720	1616.54	1807.98
4	GUIDE	121507480	8.80	8598	0.129	-0.168	0.073	0.121	230.407322	8.449858	-206.28	1459.62
5	GUIDE	121507864	9.72	8600	0.155	0.058	0.108	0.175	231.118023	8.893781	682.92	-1397.29
6	GUIDE	121508304	7.54	8607	-0.298	0.081	0.062	0.096	231.074833	9.087473	1395.90	-1429.03
7	GUIDE	121506400	9.07	8605	0.241	0.248	0.085	0.140	231.447386	8.409178	-1304.40	-2081.10

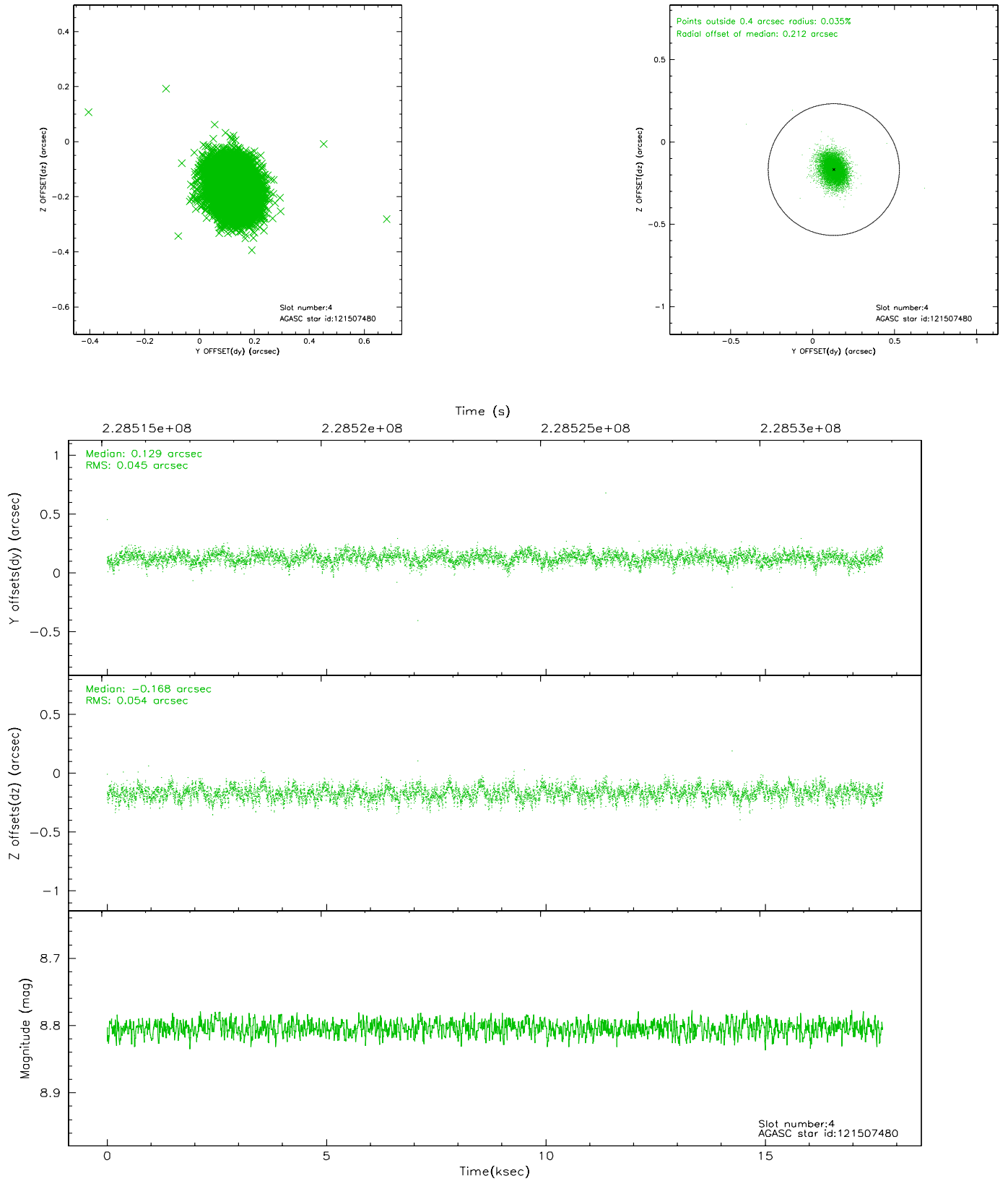


## 2.4 Star Slots

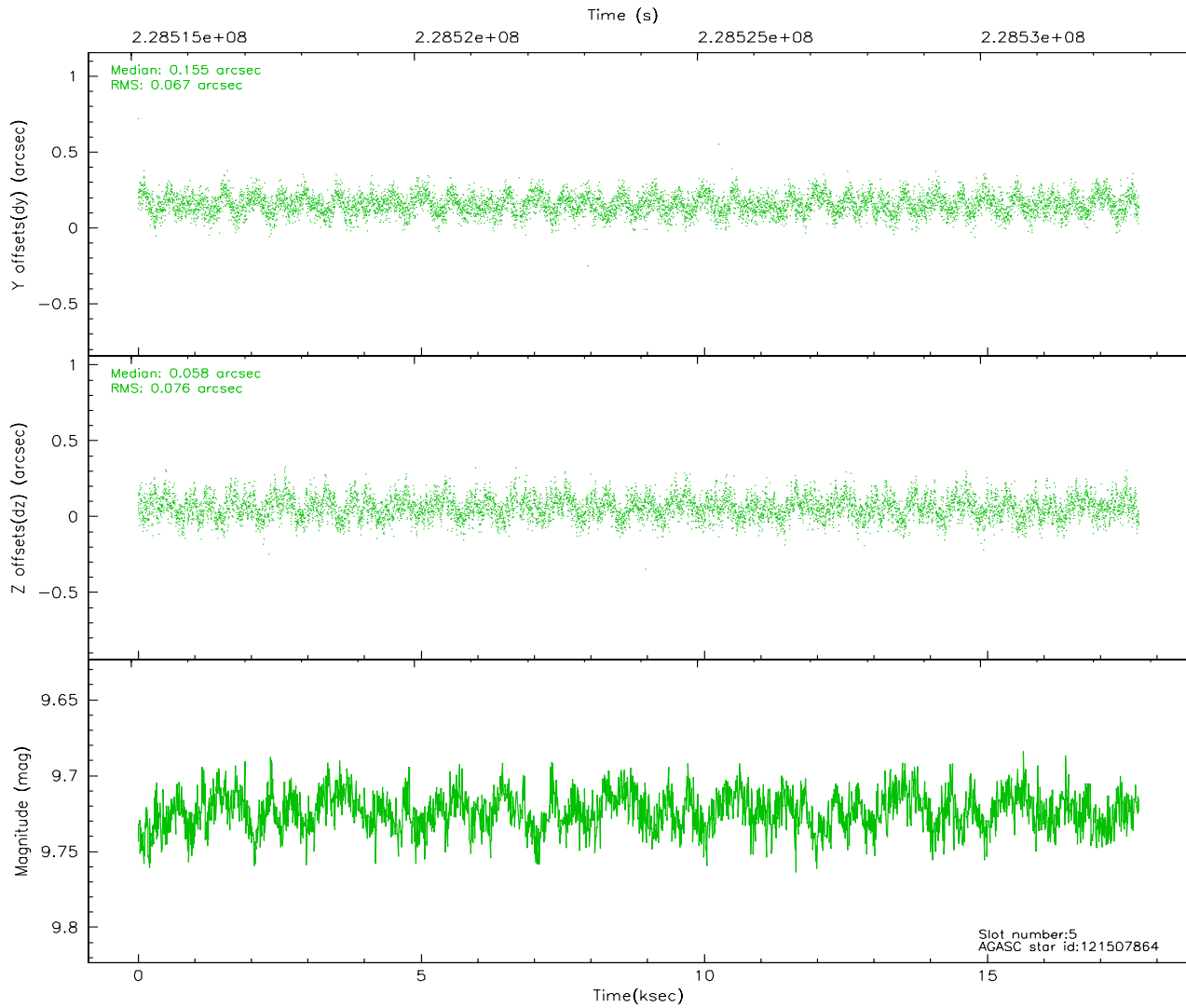
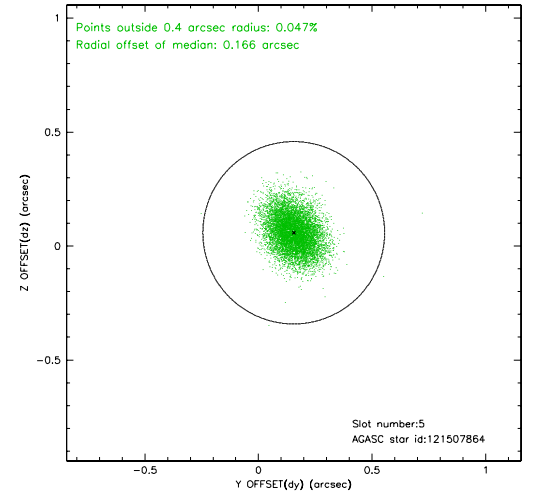
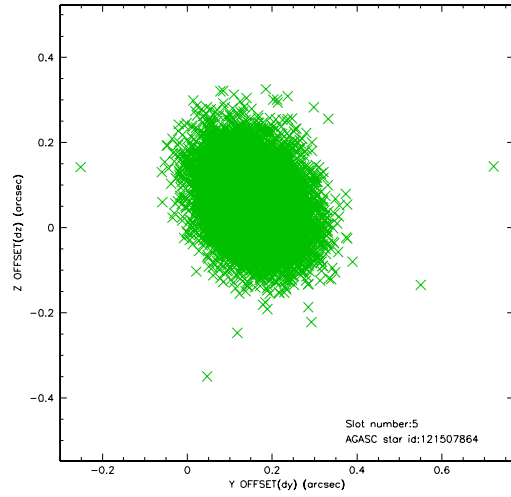
### 2.4.1 Slot 3



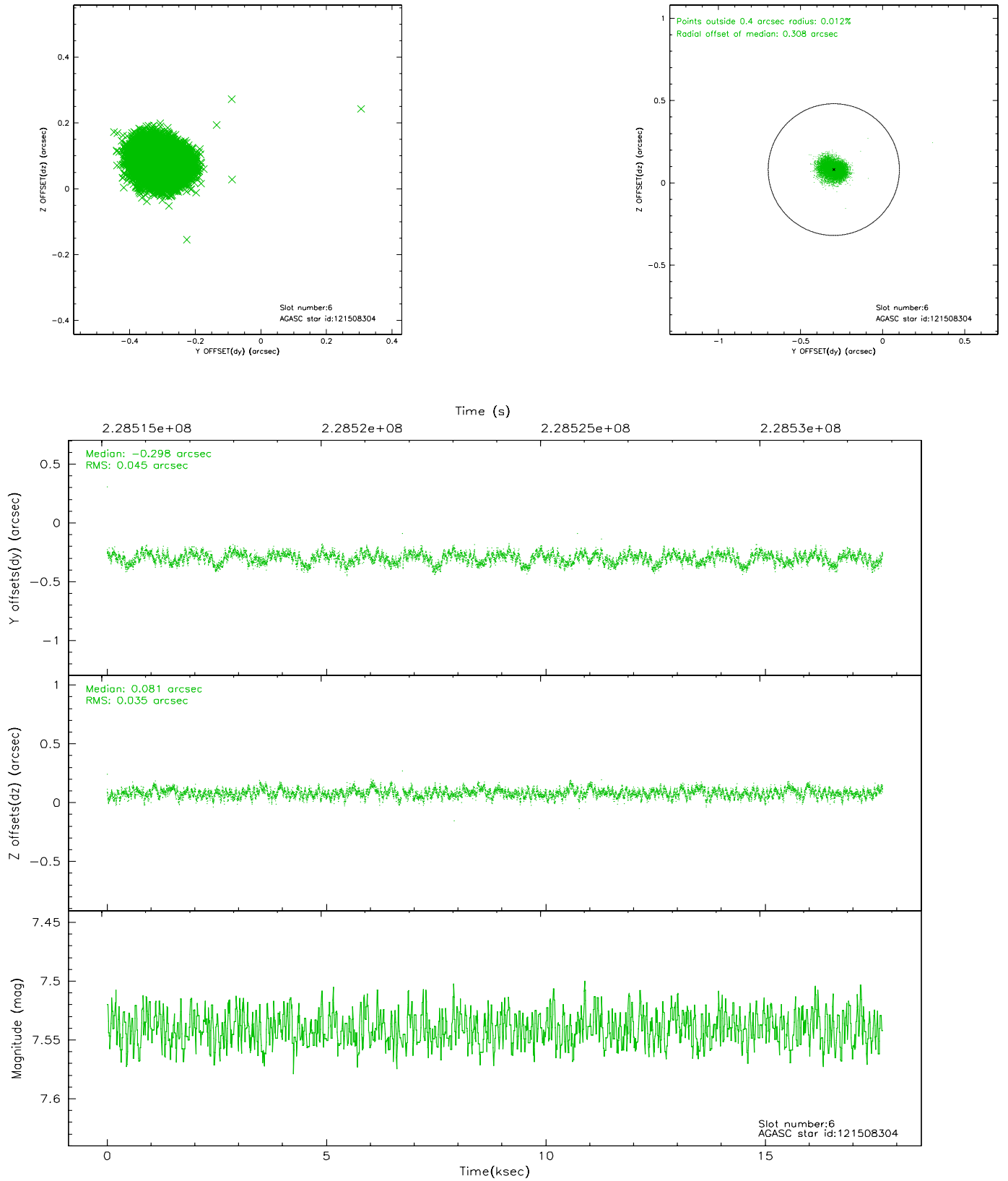
## 2.4.2 Slot 4



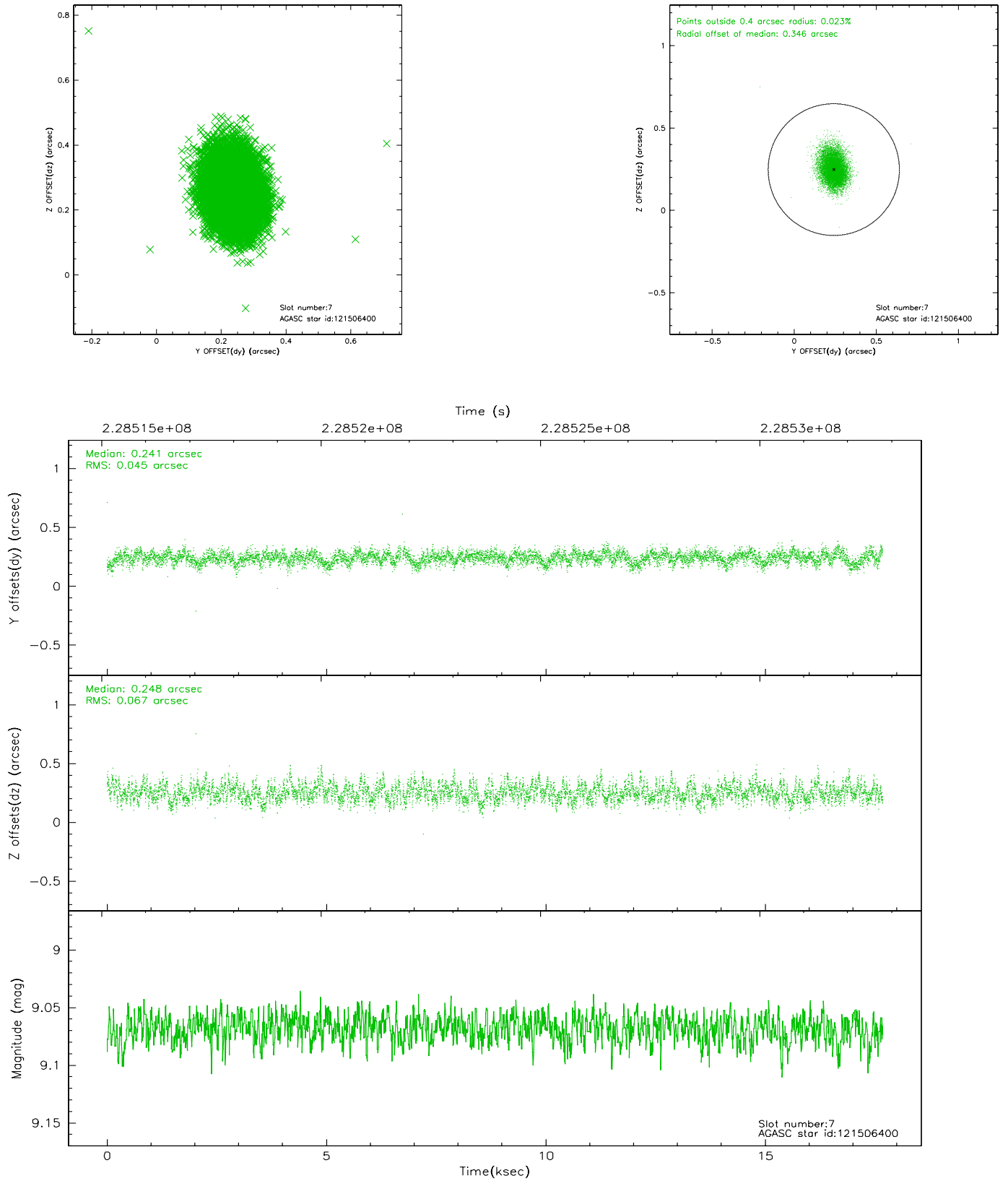
### 2.4.3 Slot 5



## 2.4.4 Slot 6

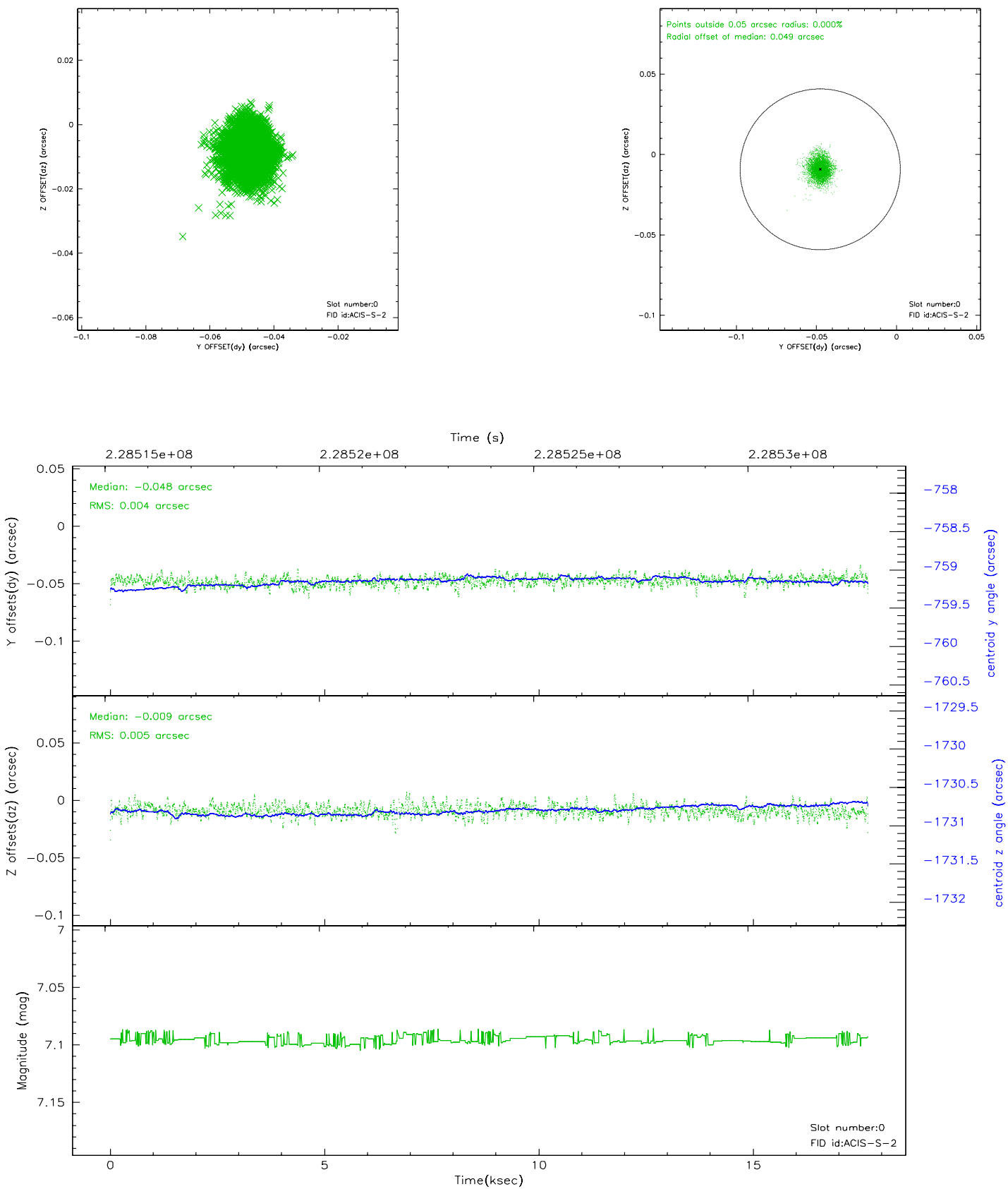


## 2.4.5 Slot 7

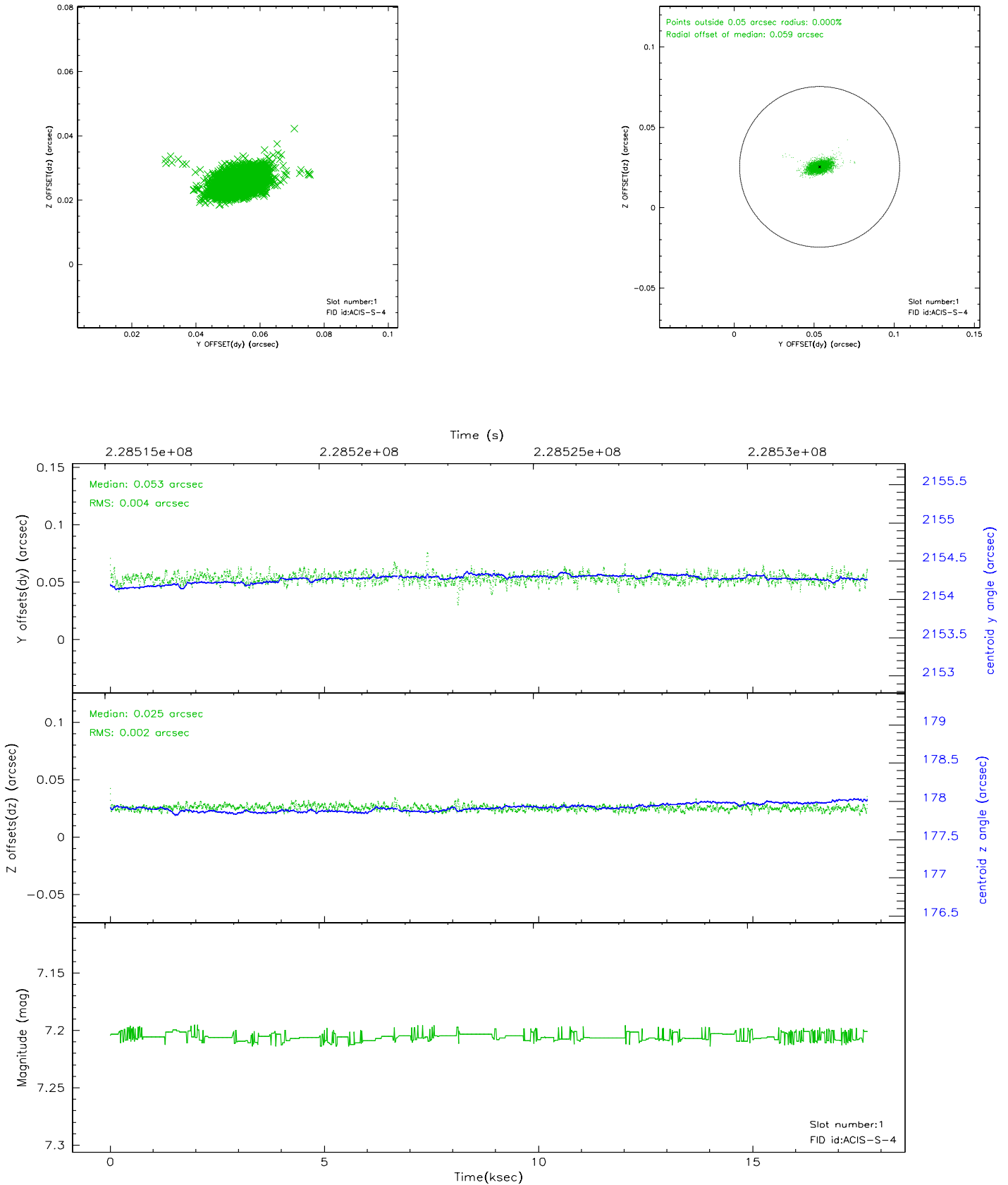


## 2.5 FID Slots

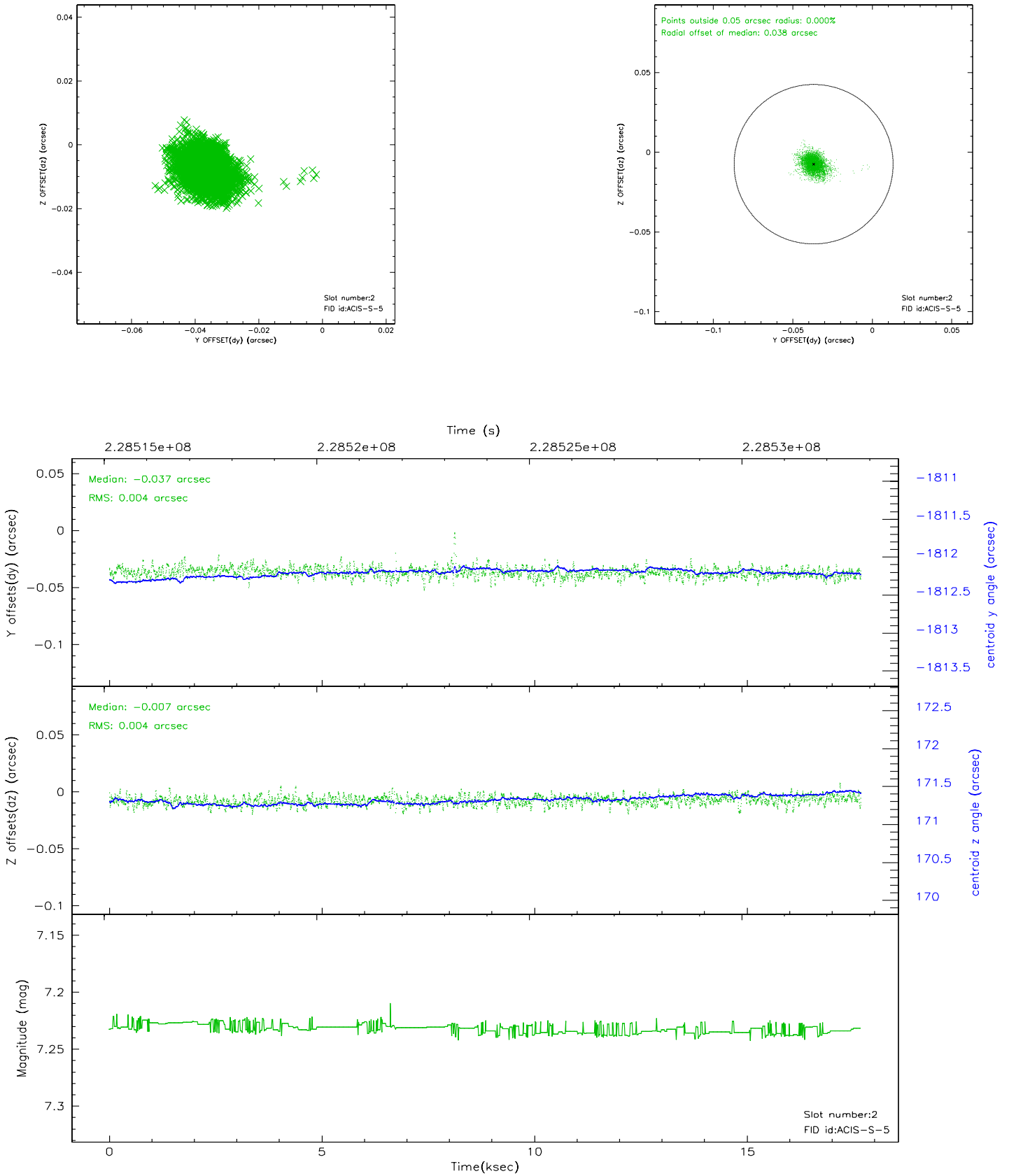
### 2.5.1 Slot 0



## 2.5.2 Slot 1

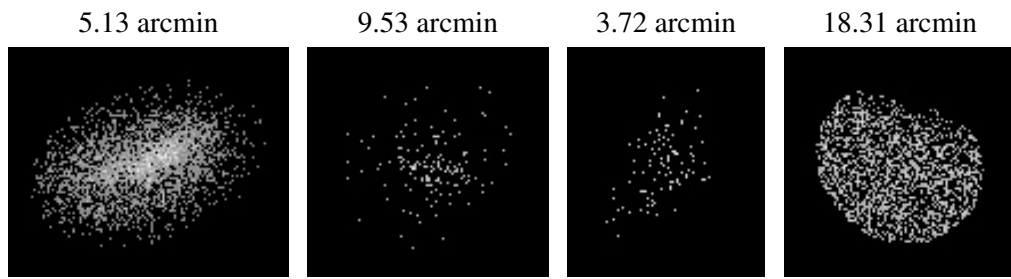


### 2.5.3 Slot 2





### 3 Point Sources



## A Summary

### A.1 Status

V&V Scientist	Jen Lauer
V&V Date (YYYY-MM-DD)	2006.03.20
V&V Edition	1
V&V Disposition and Status	OK
V&V Charge Time	17.03759

### A.2 Comments