

V&V Reference Report

L2 ASCDS Version : 8.5.1.1

Observation 6258 - L2 Version 3
Chandra X-Ray Center

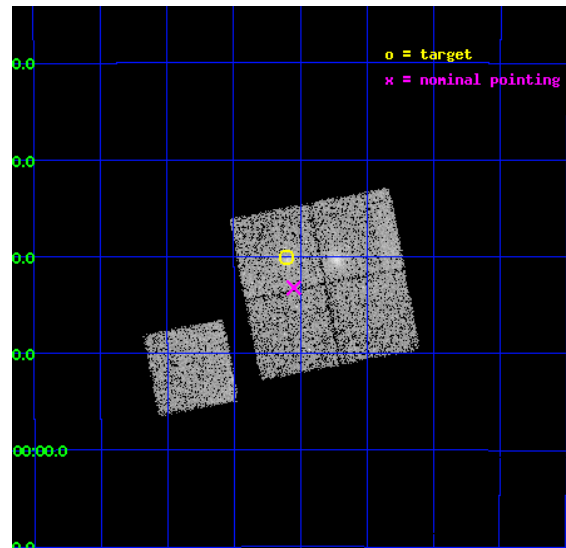
L2 Processing Date : Dec 20 2012

Contents

1	Front	2
2	OBI	3
2.1	OBI	3
2.1.1	Images	3
2.1.2	Bias	3
2.1.3	Parameters	4
2.1.4	Events	4
2.2	Compared Parameters	5
2.3	Aspect	6
2.4	Star Slots	9
2.4.1	Slot 3	9
2.4.2	Slot 4	10
2.4.3	Slot 5	11
2.4.4	Slot 6	12
2.4.5	Slot 7	13
2.5	FID Slots	14
2.5.1	Slot 0	14
2.5.2	Slot 1	15
2.5.3	Slot 2	16
A	Summary	17
A.1	Status	17
A.2	Comments	17

1 Front

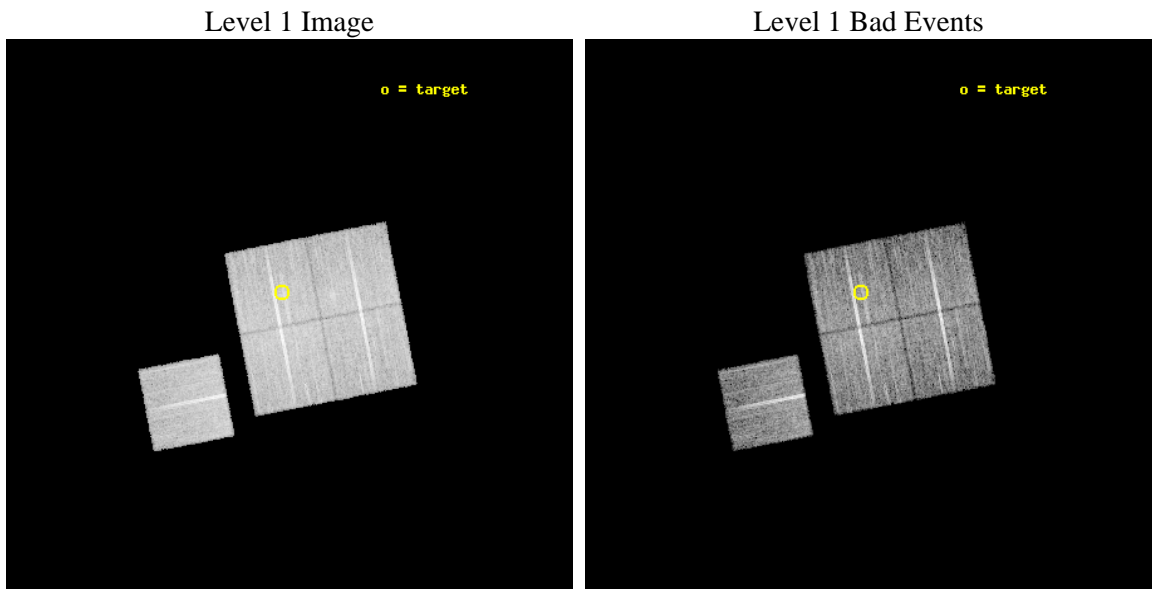
seq_num	800468	Sequence number
obs_id	6258	Observation id
title	DARK ENERGY WITH X-RAY CLUSTERS: CHANDRA OBSERVATIONS OF 41 HIGH-REDSHIFT CLUSTERS FROM THE 400 deg^2 ROSAT PSPC SURVEY	Proposal titl
observer	Dr. Alexey Vikhlinin	Principal investigator
object	cl0328-2140	Source name
dtcycle	0	
cycle	P	events from which exps? Prim/Second/Both
ra_targ	52.150417	Observer's specified target RA [deg]
dec_targ	-21.667778	Observer's specified target Dec [deg]
ra_nom	52.137142025442	Nominal RA [deg]
dec_nom	-21.720716329997	Nominal Dec [deg]
roll_nom	259.00379054195	Nominal Roll [deg]
revision	3	Processing version of data
ontime	13271.059014201	Sum of GTIs [s]
livetime	13097.662858169	Livetime [s]
ontime0	13274.199974447	Sum of GTIs [s]
ontime1	13271.059004188	Sum of GTIs [s]
ontime2	13274.199974447	Sum of GTIs [s]
ontime3	13271.059014201	Sum of GTIs [s]
ontime6	13274.199974447	Sum of GTIs [s]
l2events	40191	Number of level 2 events



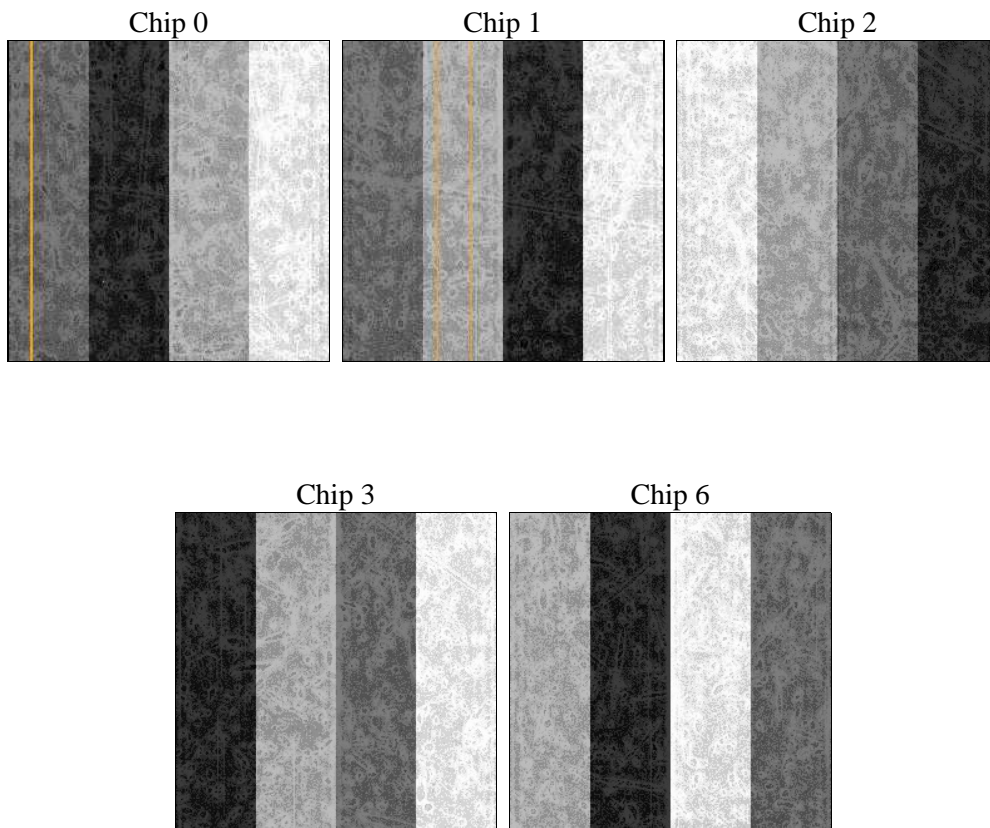
2 OBI

2.1 OBI

2.1.1 Images



2.1.2 Bias



2.1.3 Parameters

obi_num	0	Obi number	sched_exp_time	13165.662000	[s] Scheduled observation exposure time
ascdsver	8.5.1.1	Processing system revision	ontime	13271.059014201	Sum of GTIs [s]
caldbver	4.5.5	 	ontime0	13274.199974447	Sum of GTIs [s]
date	2012-12-20T16:28:27	Date and time of file creation	ontime1	13271.059004188	Sum of GTIs [s]
revision	3	Processing version of data	ontime2	13274.199974447	Sum of GTIs [s]
			ontime3	13271.059014201	Sum of GTIs [s]
			ontime6	13274.199974447	Sum of GTIs [s]
			l1events	451498	Number of level 1 events

2.1.4 Events

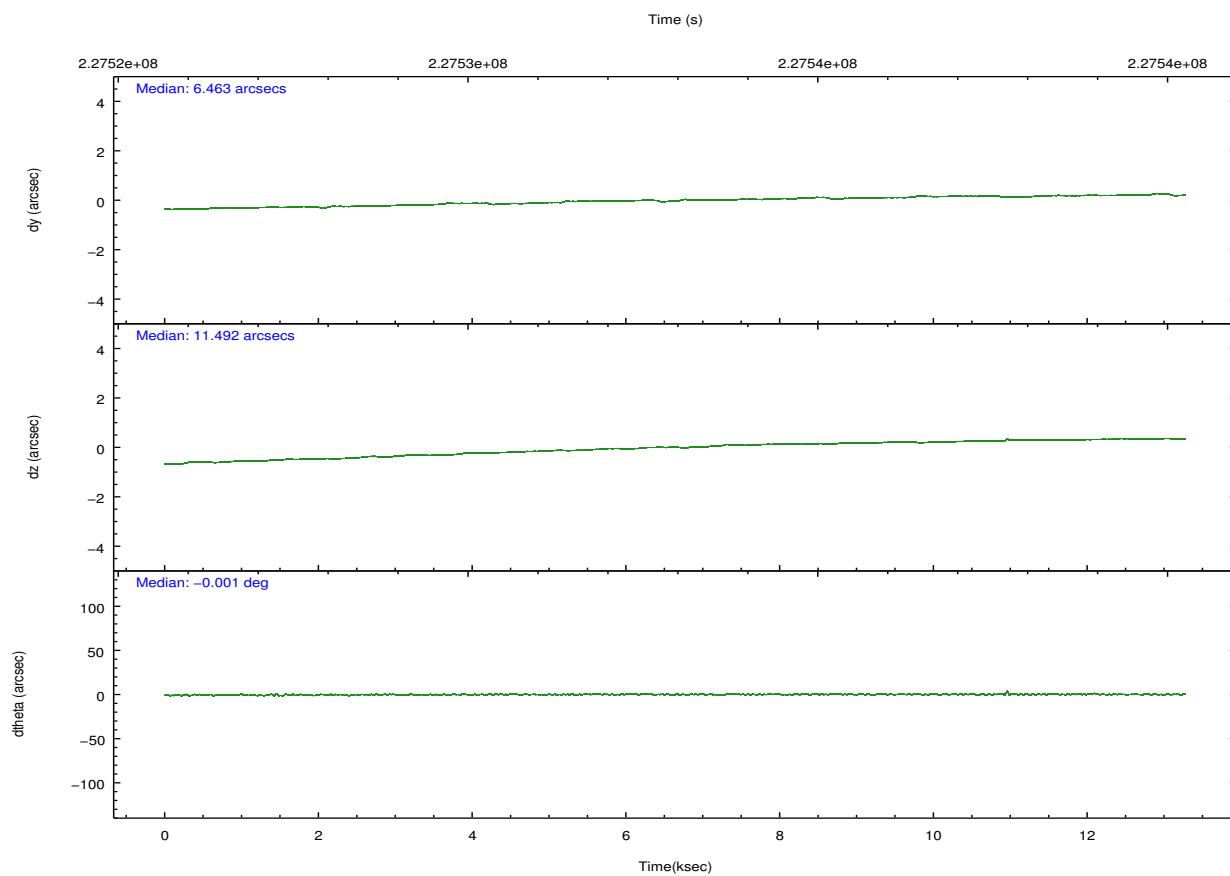
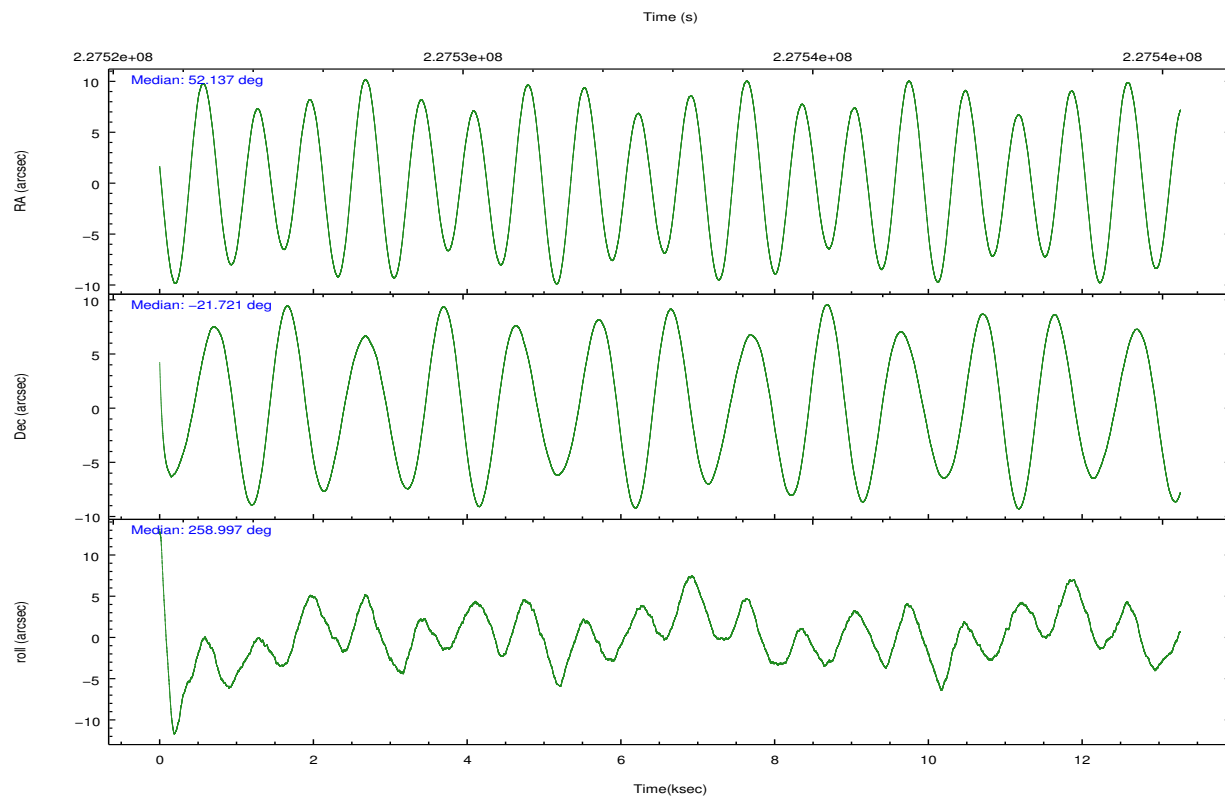
	ccd 0	ccd 1	ccd 2	ccd 3	ccd 6
level 1 events	84800	86809	96144	93793	89952
rejected events	75846	75359	87119	84506	80671
rejected %	89%	86%	90%	90%	89%

	ccd 0	ccd 1	ccd 2	ccd 3	ccd 6
grade 0 events	3589	5283	3831	4155	3776
	4%	6%	3%	4%	4%
grade 1 events	56	41	39	61	45
	0%	0%	0%	0%	0%
grade 2 events	2214	2493	2224	2081	2011
	2%	2%	2%	2%	2%
grade 3 events	1096	1182	991	1021	1130
	1%	1%	1%	1%	1%
grade 4 events	986	1179	1020	1076	1119
	1%	1%	1%	1%	1%
grade 5 events	3177	3454	2949	3666	3604
	3%	3%	3%	3%	4%
grade 6 events	1810	2204	1769	1717	2045
	2%	2%	1%	1%	2%
grade 7 events	71872	70973	83321	80016	76222
	84%	81%	86%	85%	84%

2.2 Compared Parameters

Parameter	Planned	Actual	Parameter	Planned	Actual
Instrument	ACIS	ACIS	Obspar format version number	7	7
Detector	ACIS-01236	ACIS-01236	Obspar file type	PREDICTED	ACTUAL
Grating	NONE	NONE	Obspar update status	NONE	UPDATED
Data mode	VFAINT	VFAINT	Number of optional ACIS chips dropped	0	0
Observation mode	POINTING	POINTING	On-chip summing requested	N	N
[deg] Pointing RA	52.127464	52.13714202544246	Subarray requested	NONE	NONE
[deg] Pointing Dec	-21.694819	-21.72071632999729	Alternating exposures requested	N	N
[deg] Pointing Roll	258.791511	259.0037905419505	[s] Primary exposure time	0.000000	3.1
[mm] SIM focus pos	-0.782348	-0.7809083437167272			
[mm] SIM defocus	0	0.001439871863259334			
[mm] SIM translation stage pos	-225.840463	-225.8433433320239			
[mm] SIM translation stage offset	-7.752	-7.749109670905796			
[s] Observation start time (MET)	227526433.184000	227524876.87291			
Observation start date	2005-03-18T09:46:09	2005-03-18T09:21:16			
[s] Observation end time (MET)	227539599.184000	227539831.62359			
Observation end date	2005-03-18T13:25:35	2005-03-18T13:30:31			
Read mode	TIMED	TIMED			

2.3 Aspect

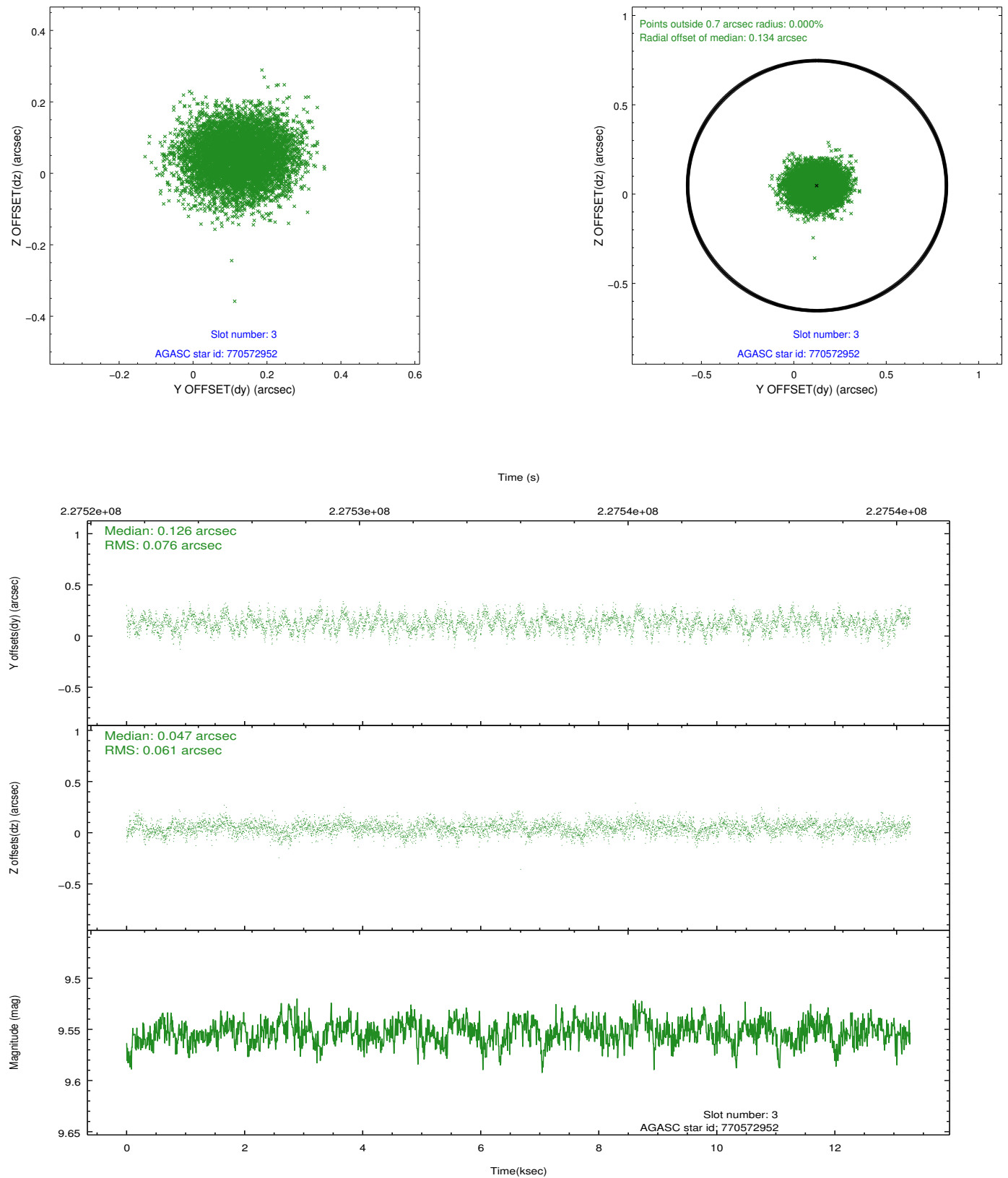


Slot Statistics

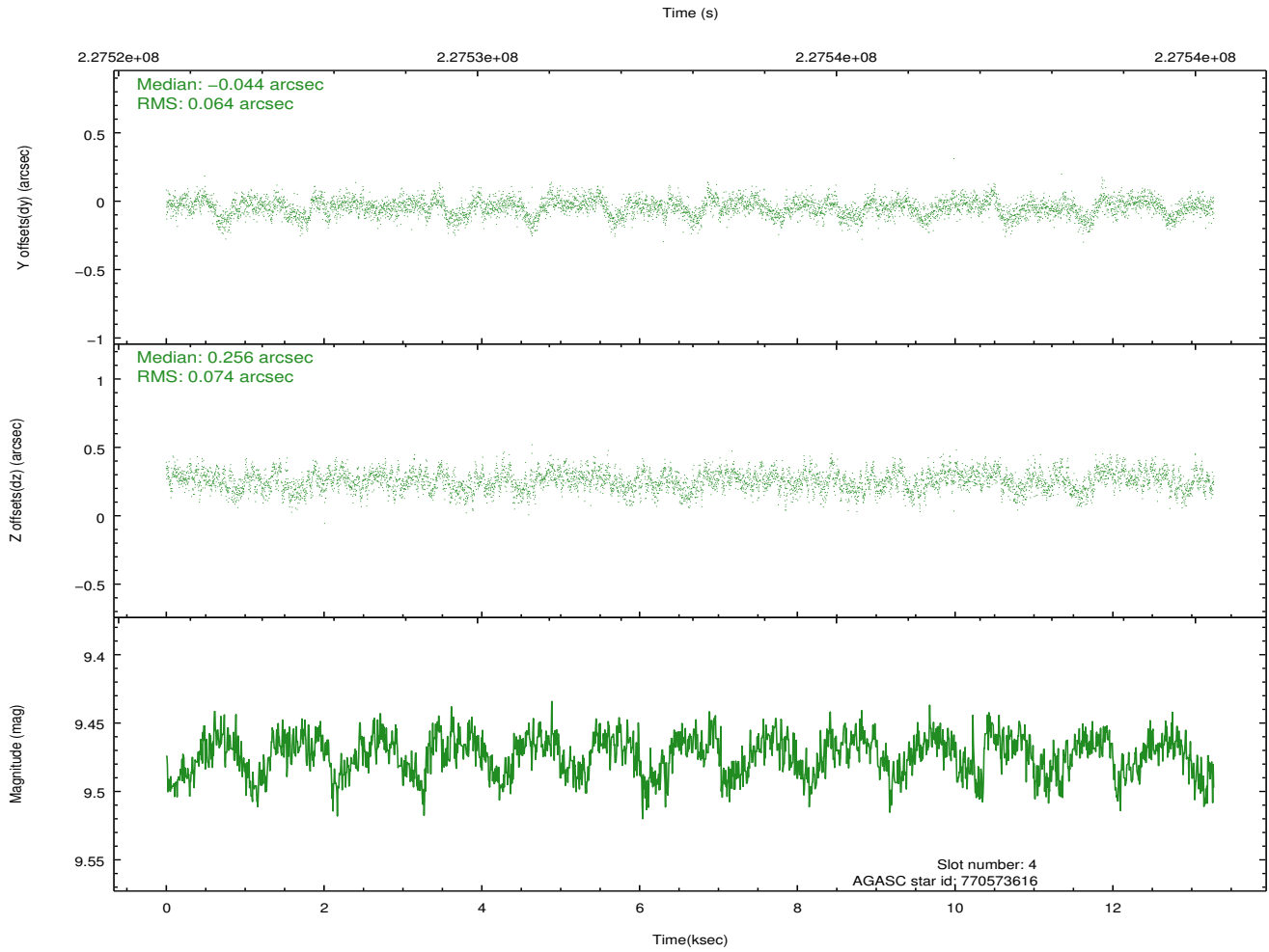
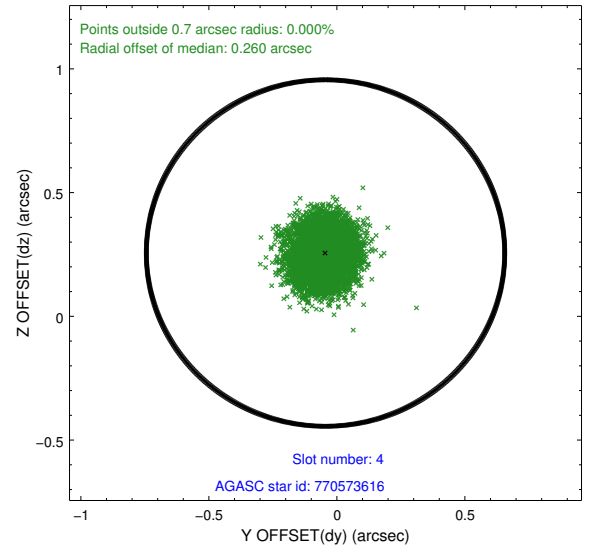
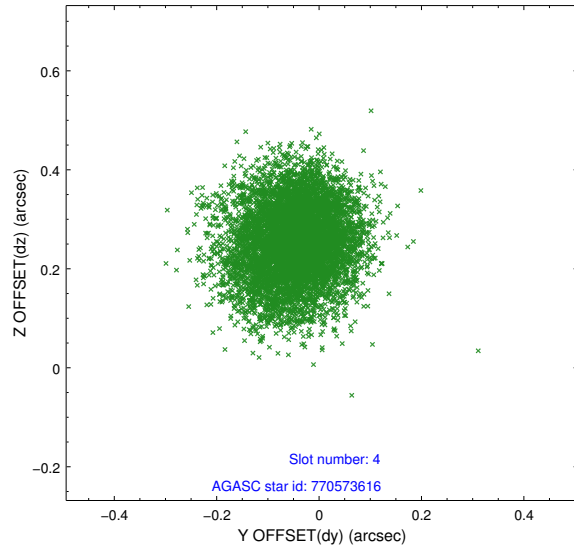
slot	status	id	mag	n_pts	med_dy	med_dz	dr1	dr2	ra	dec	mean_y	mean_z
0	FID	ACIS-I-1	7.23	3239	0.129	-0.115	0.008	0.013	0.000000	0.000000	933.23	-994.16
1	FID	ACIS-I-5	7.22	3239	-0.233	0.116	0.010	0.015	0.000000	0.000000	-1815.00	903.38
2	FID	ACIS-I-6	7.25	3239	0.011	0.069	0.013	0.022	0.000000	0.000000	398.31	1548.22
3	GUIDE	770572952	9.55	6476	0.126	0.047	0.104	0.164	52.678188	-22.321624	1860.37	2238.99
4	GUIDE	770573616	9.47	6465	-0.044	0.256	0.105	0.167	51.694921	-21.667566	187.68	-1437.25
5	GUIDE	770575272	8.84	6475	0.083	-0.052	0.091	0.153	51.531858	-22.160854	2035.89	-1620.84
6	GUIDE	770575376	8.46	6476	0.022	-0.082	0.066	0.106	51.490218	-22.063612	1719.98	-1825.89
7	GUIDE	770581640	7.84	6477	-0.183	-0.161	0.059	0.094	52.322400	-21.371182	-1269.19	414.51

2.4 Star Slots

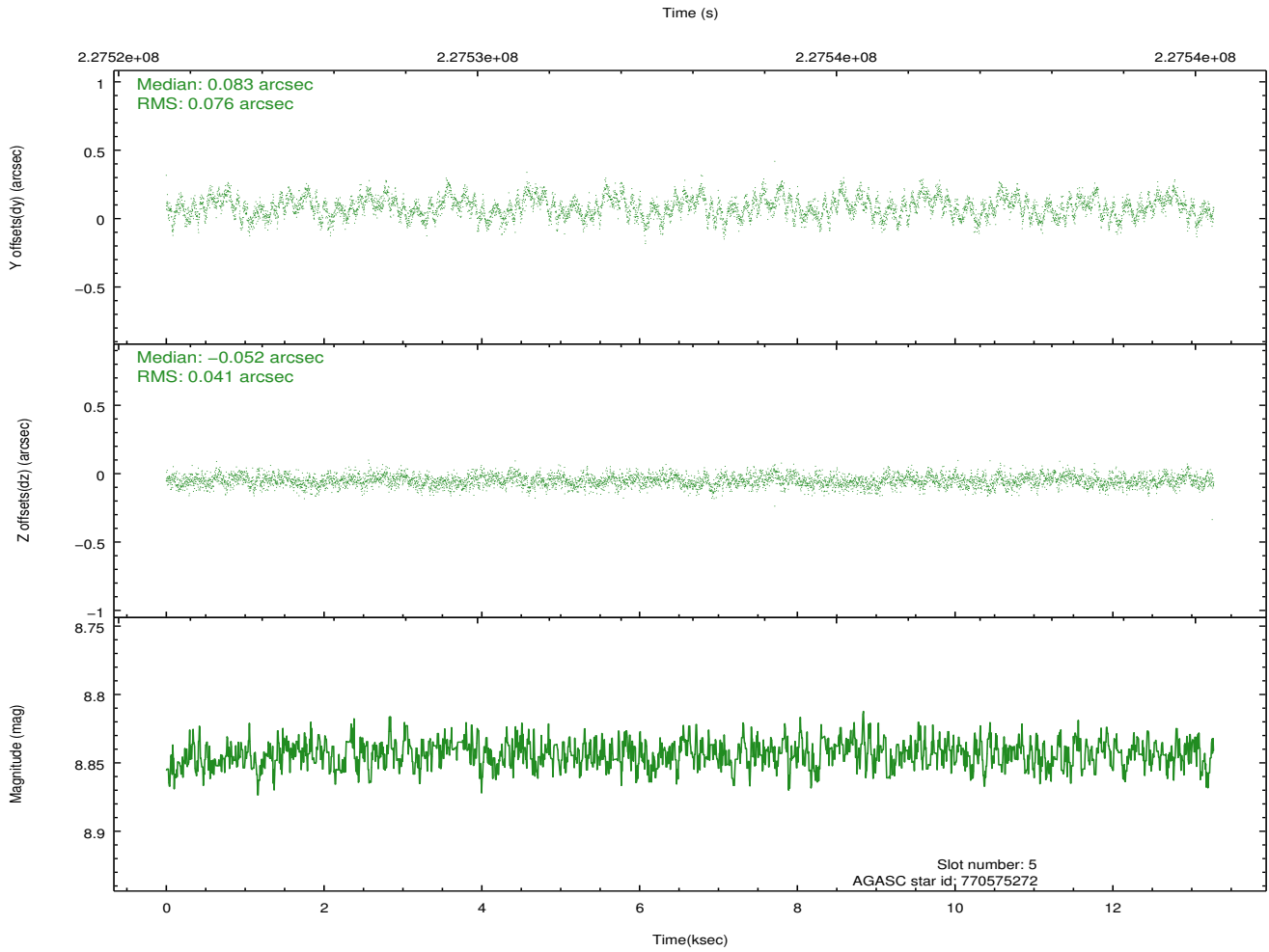
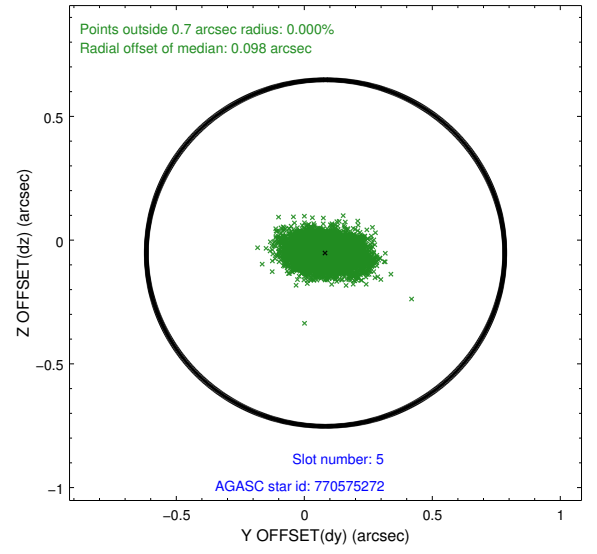
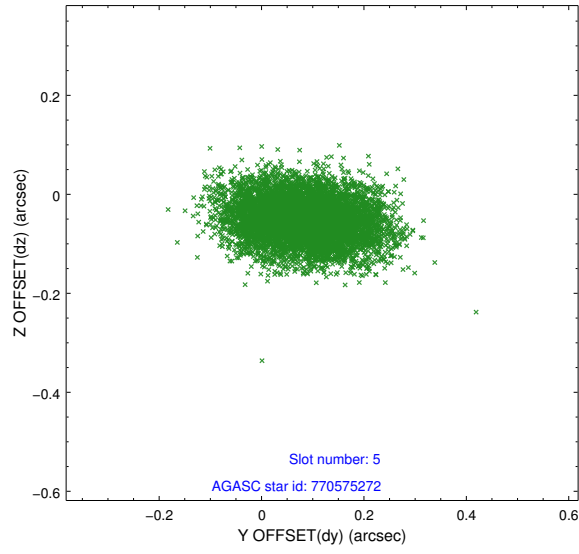
2.4.1 Slot 3



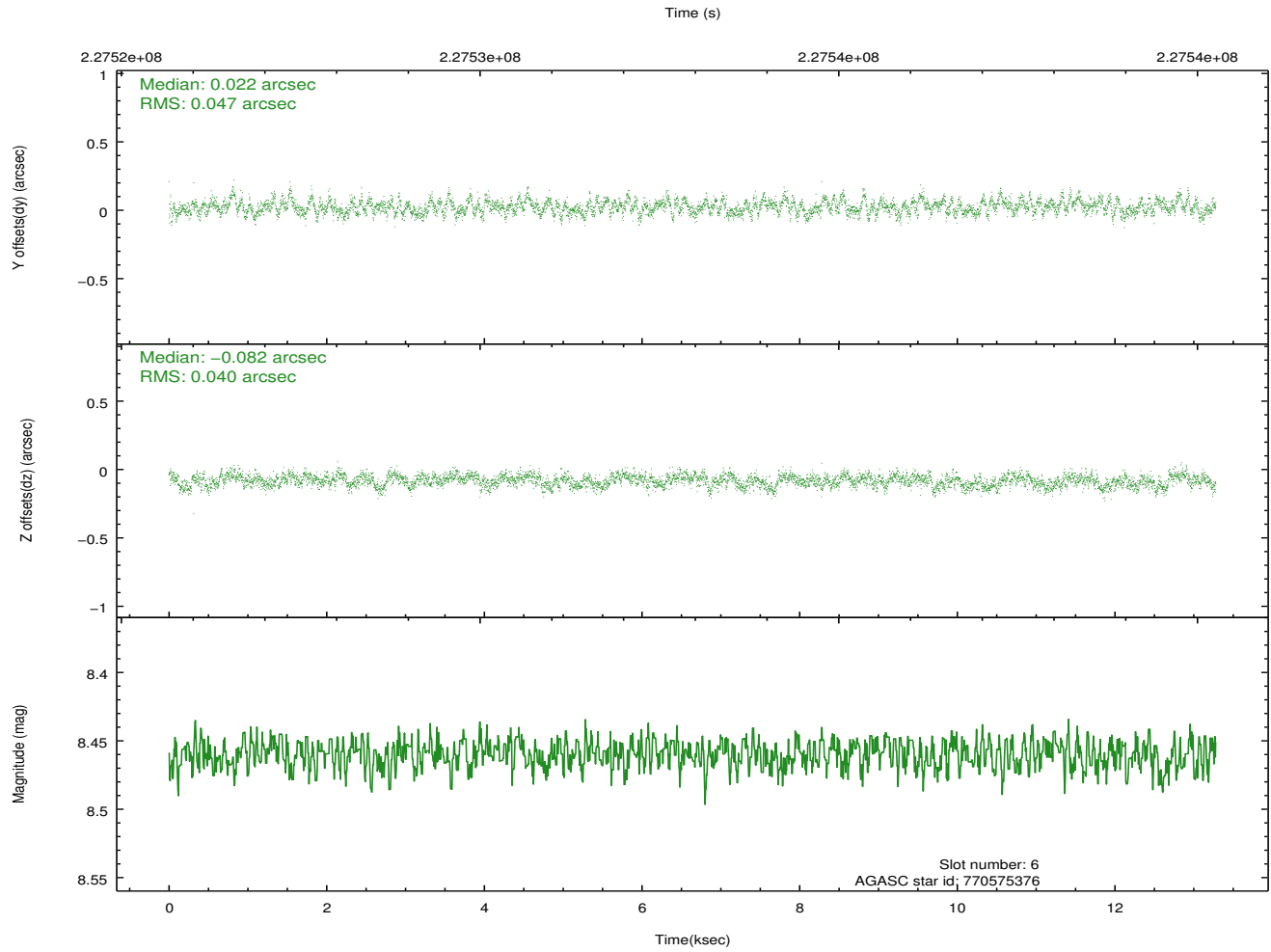
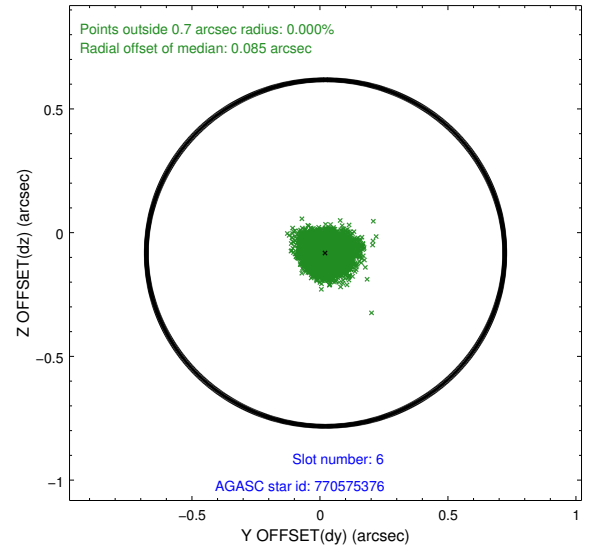
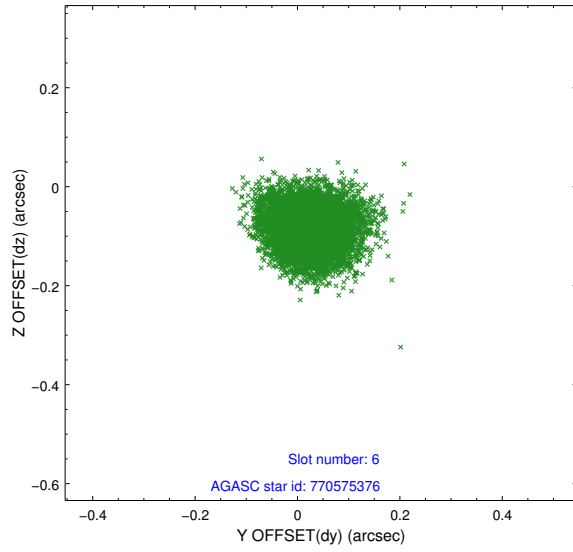
2.4.2 Slot 4



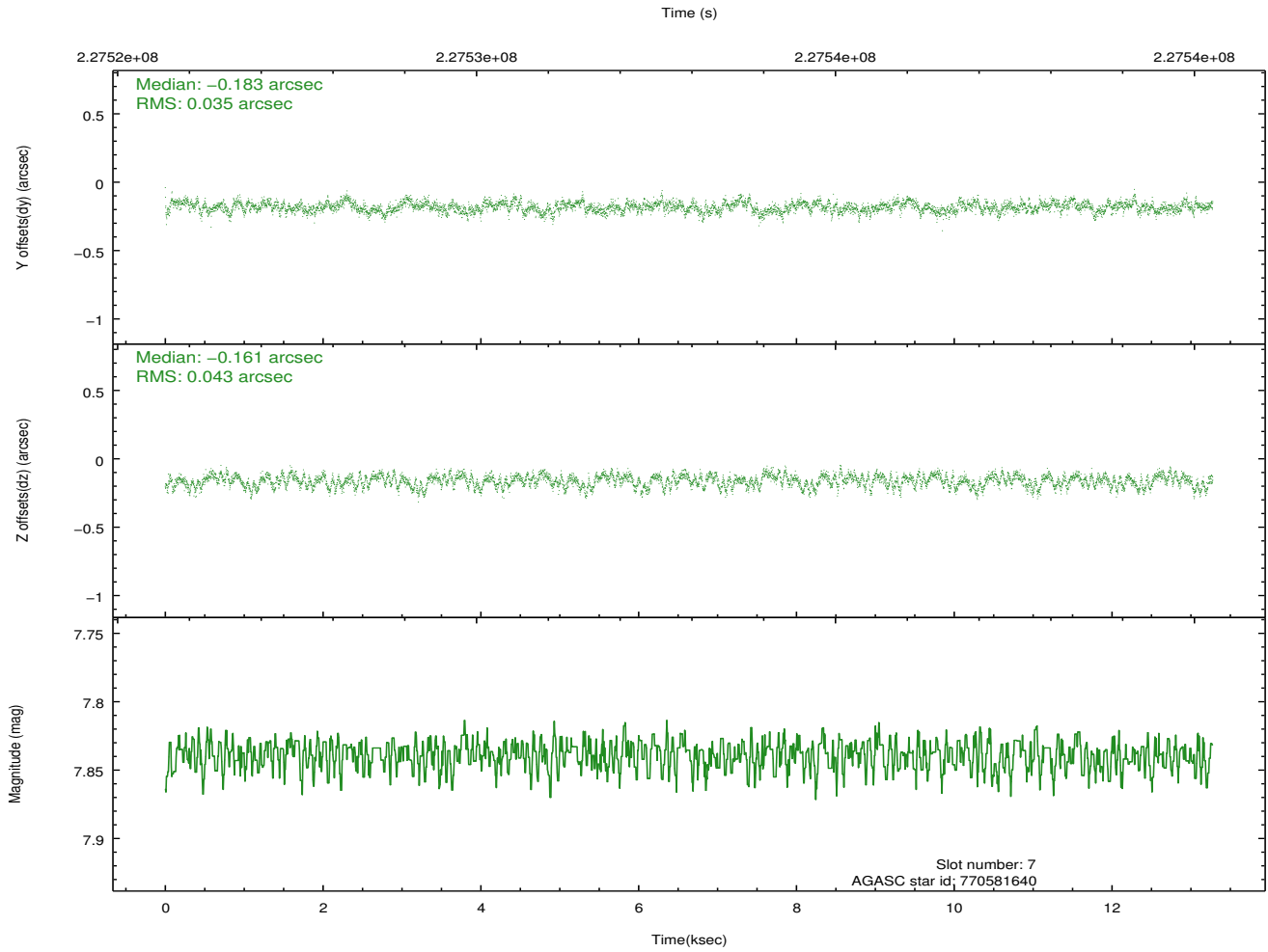
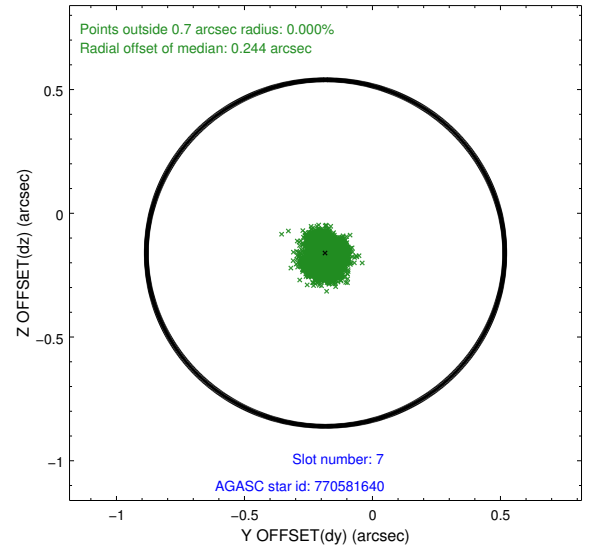
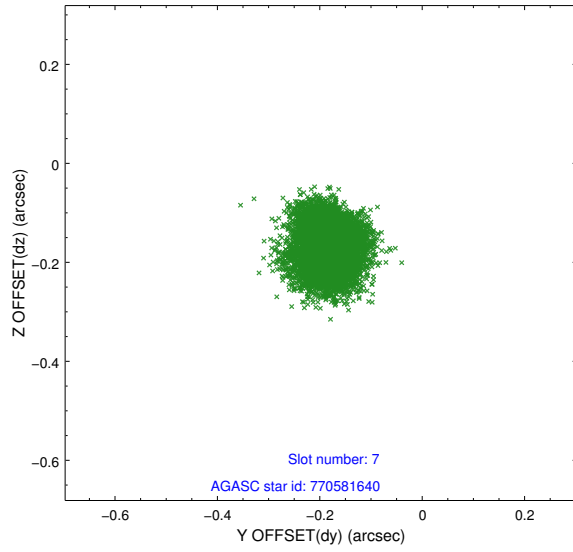
2.4.3 Slot 5



2.4.4 Slot 6

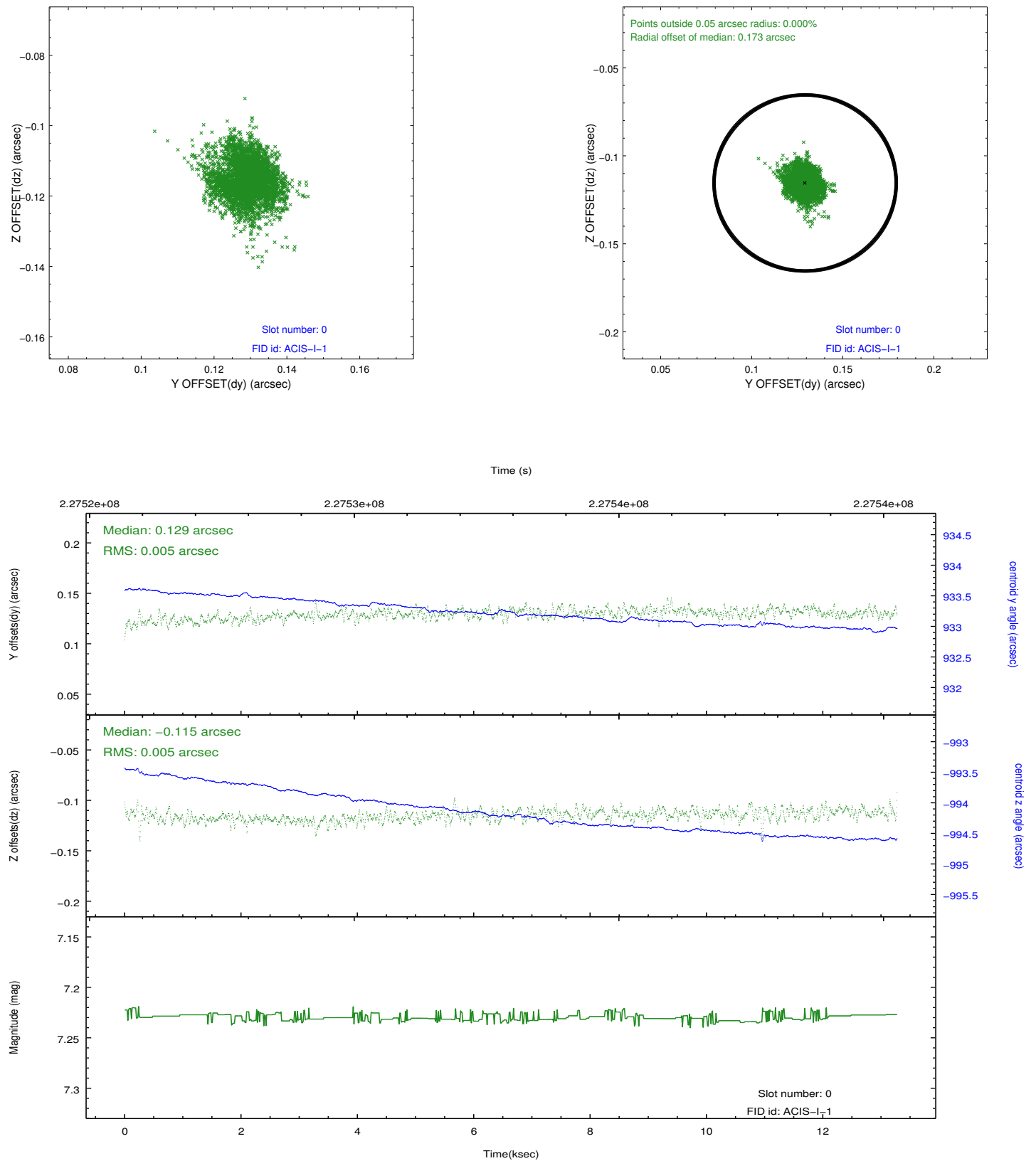


2.4.5 Slot 7

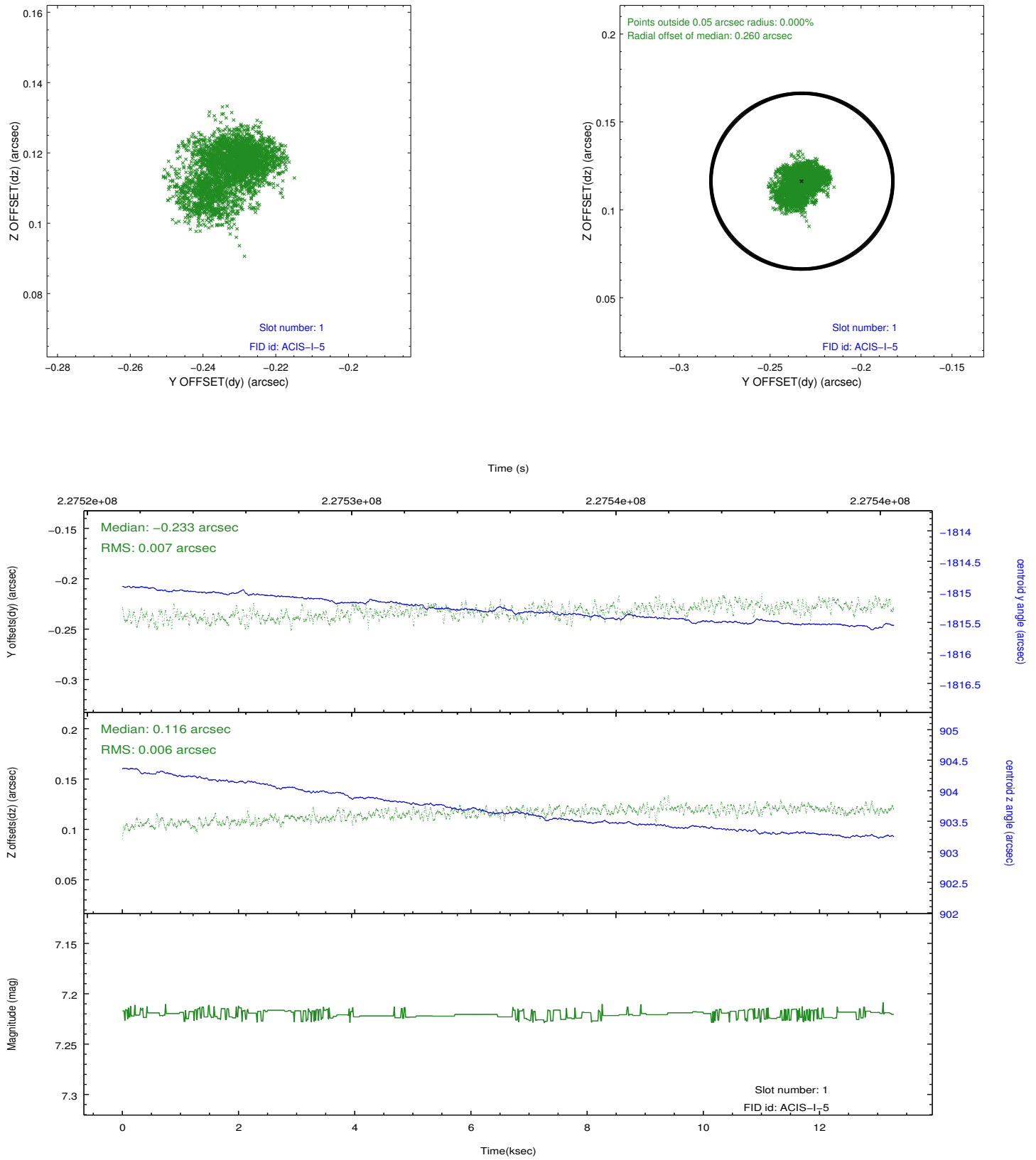


2.5 FID Slots

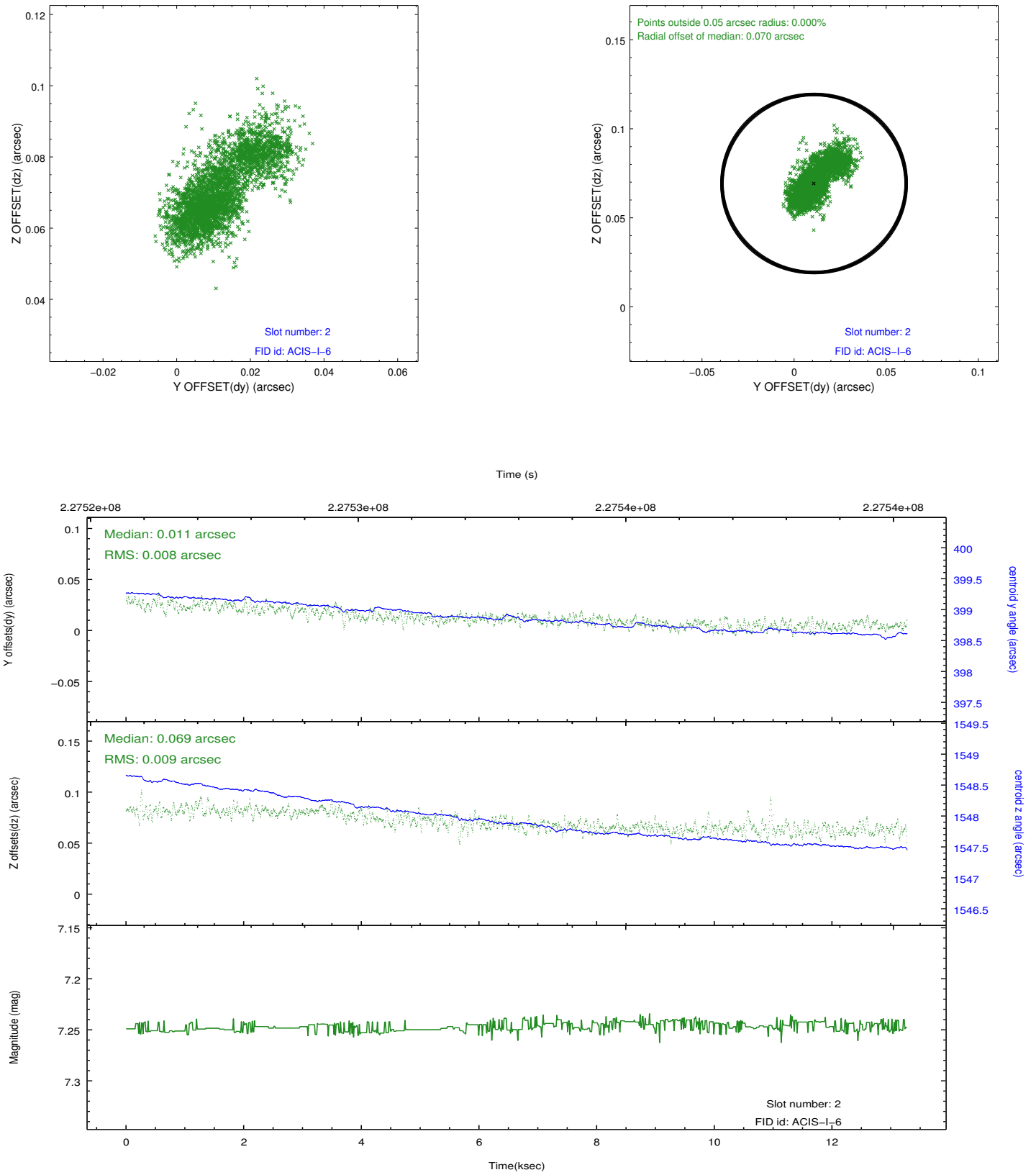
2.5.1 Slot 0



2.5.2 Slot 1



2.5.3 Slot 2



A Summary

A.1 Status

V&V Scientist	Jen Lauer
V&V Date (YYYY-MM-DD)	2013.01.11
V&V Edition	1
V&V Disposition and Status	OK
V&V Charge Time	13.27105

A.2 Comments