

V&V Reference Report

L2 ASCDS Version : 8.5.1

Observation 5838 - L2 Version 3
Chandra X-Ray Center

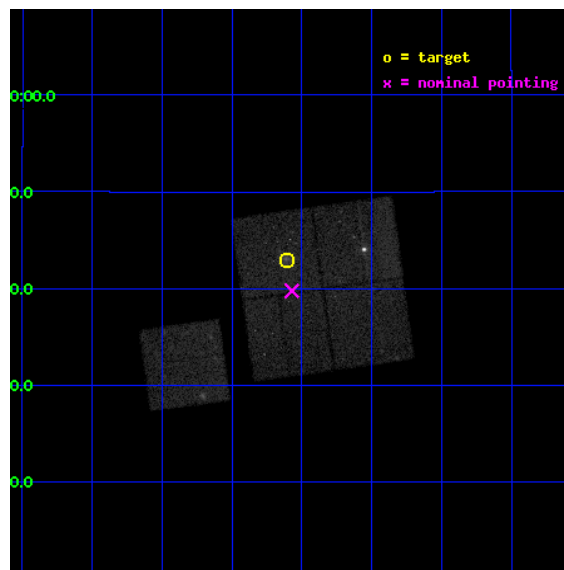
L2 Processing Date : Dec 17 2012

Contents

1	Front	2
2	OBI	3
2.1	OBI	3
2.1.1	Images	3
2.1.2	Bias	3
2.1.3	Parameters	4
2.1.4	Events	4
2.2	Compared Parameters	5
2.3	Aspect	6
2.4	Star Slots	9
2.4.1	Slot 3	9
2.4.2	Slot 4	10
2.4.3	Slot 5	11
2.4.4	Slot 6	12
2.4.5	Slot 7	13
2.5	FID Slots	14
2.5.1	Slot 0	14
2.5.2	Slot 1	15
2.5.3	Slot 2	16
A	Summary	17
A.1	Status	17
A.2	Comments	17

1 Front

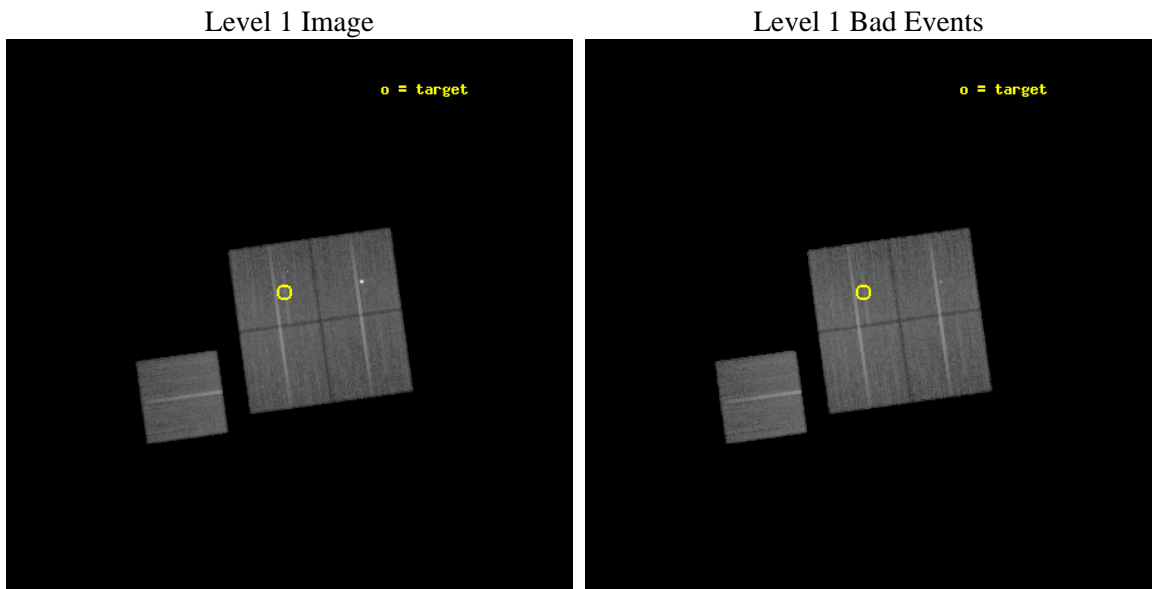
seq_num	800547	Sequence number
obs_id	5838	Observation id
title	Supplement to Chandra observations of high-redshift clusters of galaxies from the 400 Square Degree ROSAT PSPC survey	Proposal title
observer	Dr. Stephen Murray	Principal investigator
object	cl0926+1242	Source name
dtcycle	0	
cycle	P	events from which exps? Prim/Second/Both
ra_targ	141.6525	Observer's specified target RA [deg]
dec_targ	12.716389	Observer's specified target Dec [deg]
ra_nom	141.64281377701	Nominal RA [deg]
dec_nom	12.662889758175	Nominal Dec [deg]
roll_nom	262.07743180487	Nominal Roll [deg]
revision	3	Processing version of data
ontime	31768.224737525	Sum of GTIs [s]
livetime	31353.149493902	Livetime [s]
ontime0	31761.81968683	Sum of GTIs [s]
ontime1	31768.142697334	Sum of GTIs [s]
ontime2	31761.901766837	Sum of GTIs [s]
ontime3	31768.224737525	Sum of GTIs [s]
ontime6	31771.201607525	Sum of GTIs [s]
l2events	107715	Number of level 2 events



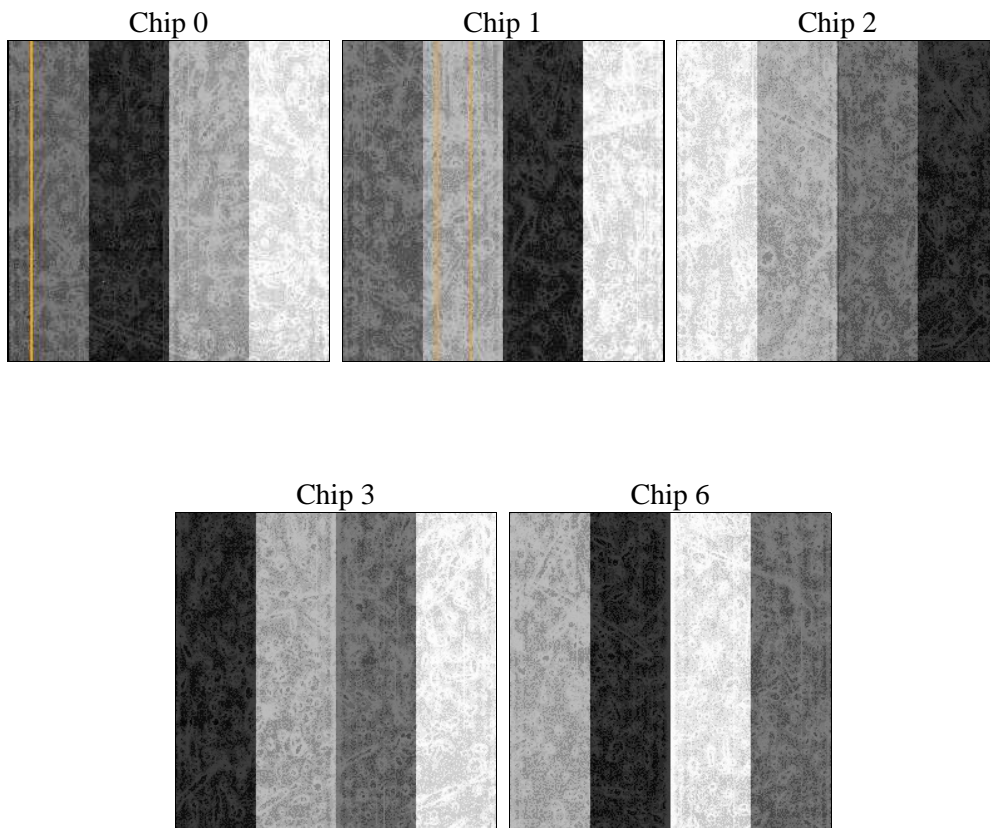
2 OBI

2.1 OBI

2.1.1 Images



2.1.2 Bias



2.1.3 Parameters

obi_num	1	Obi number	sched_exp_time	32000.000000	[s] Scheduled observation exposure time
ascdsver	8.5.1	Processing system revision	ontime	31768.224737525	Sum of GTIs [s]
caldsver	4.5.5	 	ontime0	31761.81968683	Sum of GTIs [s]
date	2012-12-17T18:44:07	Date and time of file creation	ontime1	31768.142697334	Sum of GTIs [s]
revision	3	Processing version of data	ontime2	31761.901766837	Sum of GTIs [s]
			ontime3	31768.224737525	Sum of GTIs [s]
			ontime6	31771.201607525	Sum of GTIs [s]
			l1events	970818	Number of level 1 events

2.1.4 Events

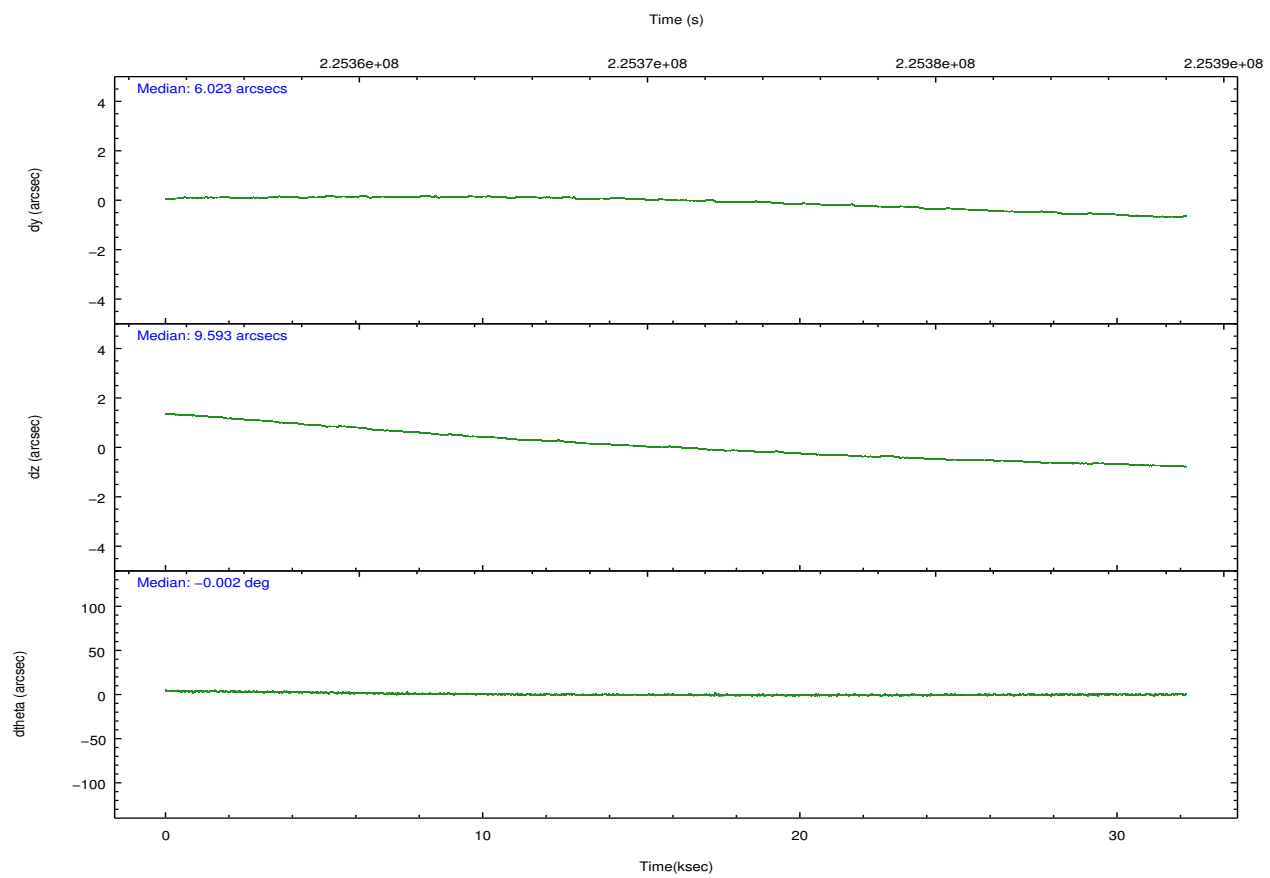
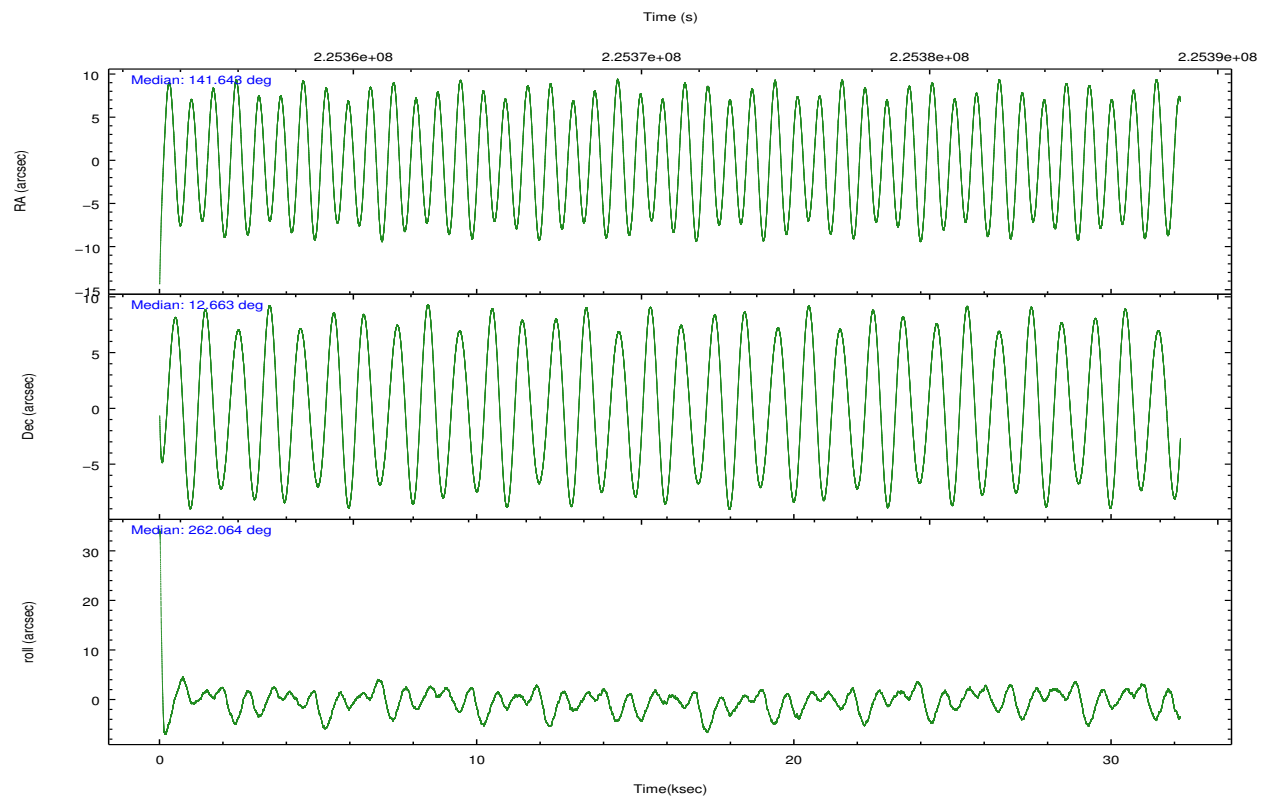
	ccd 0	ccd 1	ccd 2	ccd 3	ccd 6
level 1 events	175730	209240	197814	193850	194184
rejected events	156891	159956	179013	174060	174241
rejected %	89%	76%	90%	89%	89%

	ccd 0	ccd 1	ccd 2	ccd 3	ccd 6
grade 0 events	6463	30476	6741	7684	7303
	3%	14%	3%	3%	3%
grade 1 events	98	531	102	98	75
	0%	0%	0%	0%	0%
grade 2 events	4445	7402	4465	4091	4184
	2%	3%	2%	2%	2%
grade 3 events	2208	3319	2080	2191	2248
	1%	1%	1%	1%	1%
grade 4 events	2027	3133	2021	2120	2132
	1%	1%	1%	1%	1%
grade 5 events	6792	7608	6552	7677	7415
	3%	3%	3%	3%	3%
grade 6 events	3698	4965	3498	3710	4077
	2%	2%	1%	1%	2%
grade 7 events	149999	151806	172355	166279	166750
	85%	72%	87%	85%	85%

2.2 Compared Parameters

Parameter	Planned	Actual	Parameter	Planned	Actual
Instrument	ACIS	ACIS	Obspar format version number	7	7
Detector	ACIS-01236	ACIS-01236	Obspar file type	PREDICTED	ACTUAL
Grating	NONE	NONE	Obspar update status	NONE	UPDATED
Data mode	VFAINT	VFAINT	Number of optional ACIS chips dropped	0	0
Observation mode	POINTING	POINTING	On-chip summing requested	N	N
[deg] Pointing RA	141.632148	141.642813777013	Subarray requested	NONE	NONE
[deg] Pointing Dec	12.688247	12.66288975817482	Alternating exposures requested	N	N
[deg] Pointing Roll	261.871069	262.0774318048705	[s] Primary exposure time	0.000000	3.1
[mm] SIM focus pos	-0.782348	-0.7809083437167272			
[mm] SIM defocus	0	0.001439871863259334			
[mm] SIM translation stage pos	-225.840463	-225.8458576473255			
[mm] SIM translation stage offset	-7.752	-7.746595355604228			
[s] Observation start time (MET)	225355085.184000	225353941.12455			
Observation start date	2005-02-21T06:37:01	2005-02-21T06:19:01			
[s] Observation end time (MET)	225387085.184000	225387824.03858			
Observation end date	2005-02-21T15:30:21	2005-02-21T15:43:44			
Read mode	TIMED	TIMED			

2.3 Aspect

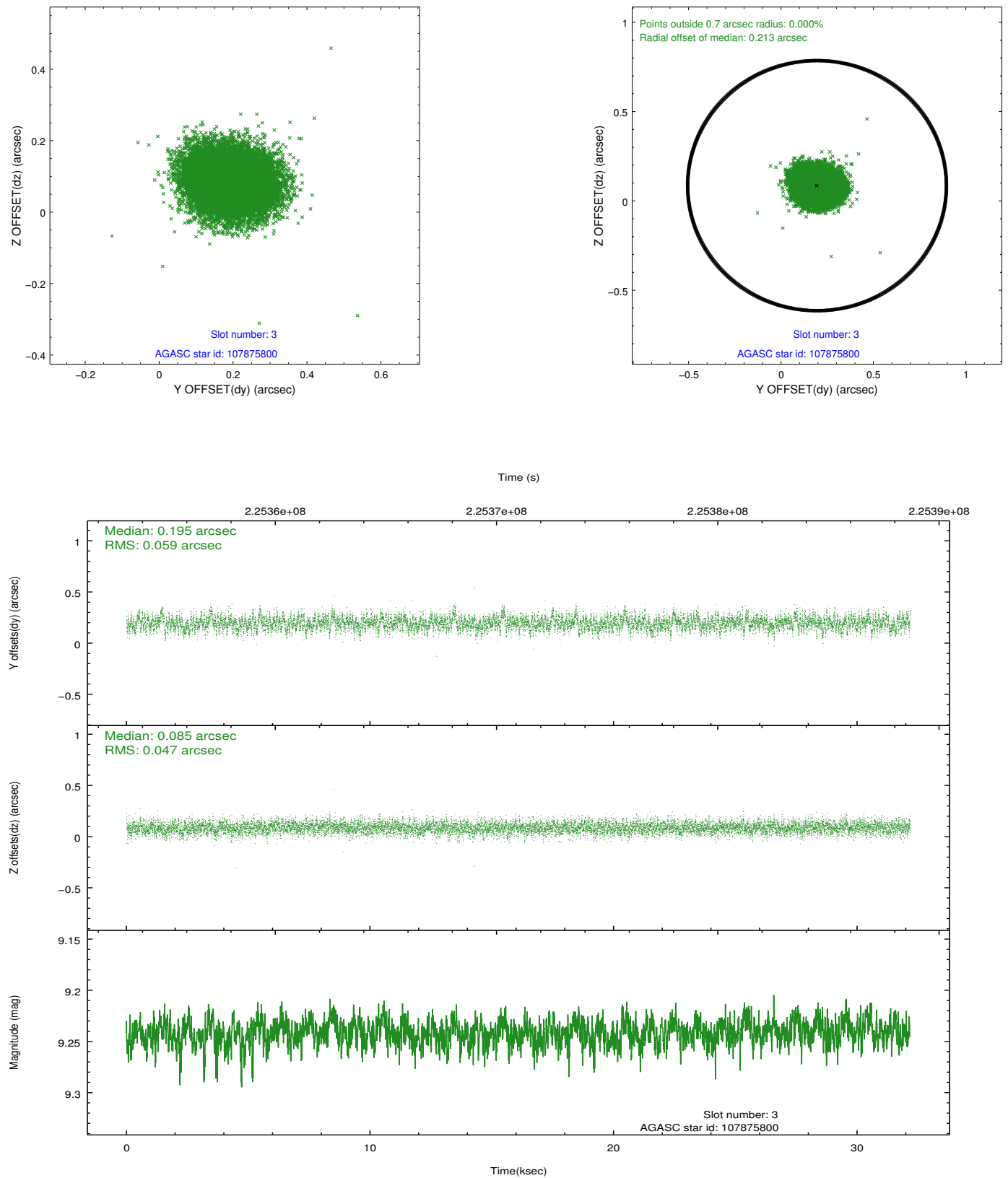


Slot Statistics

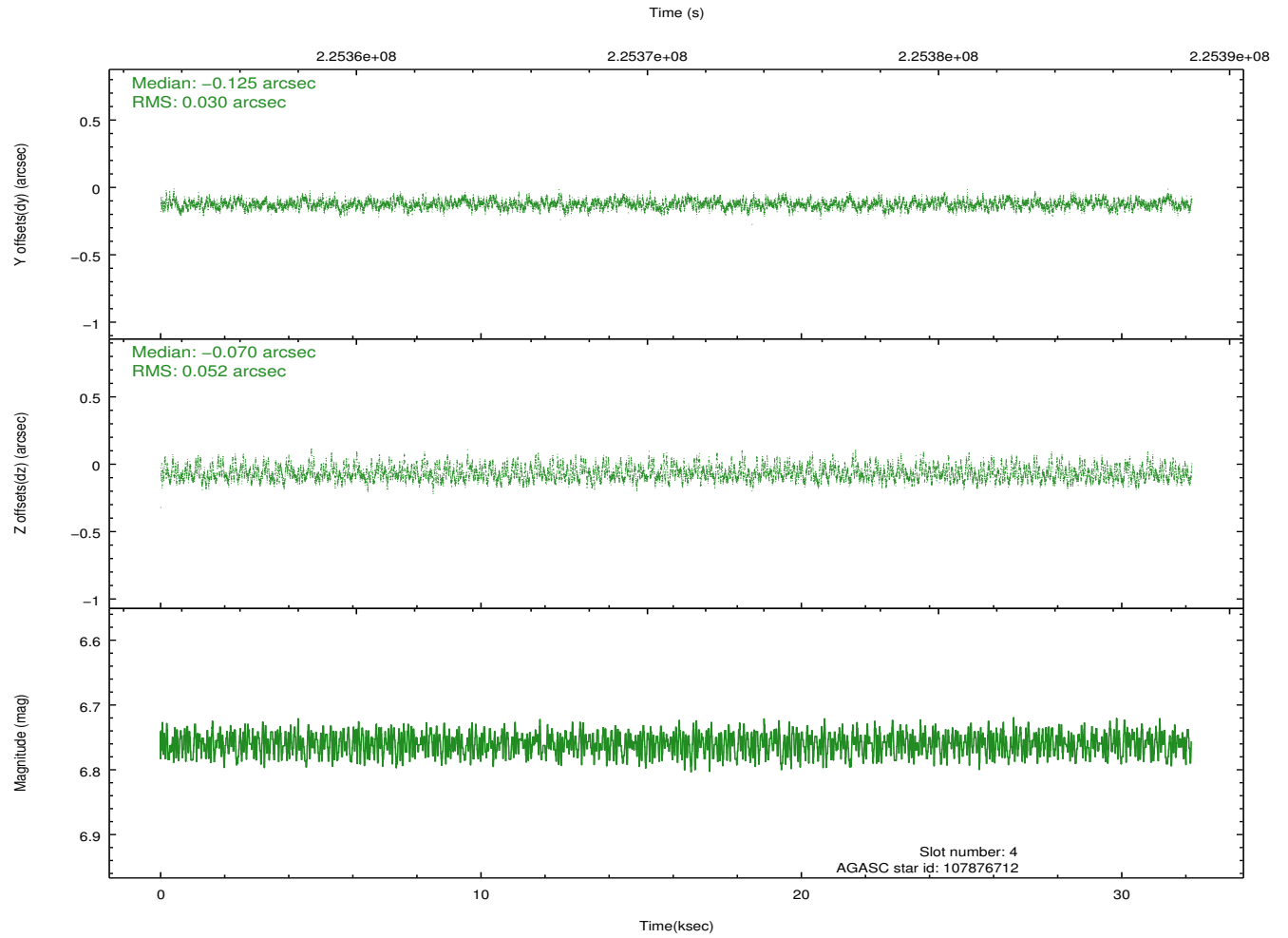
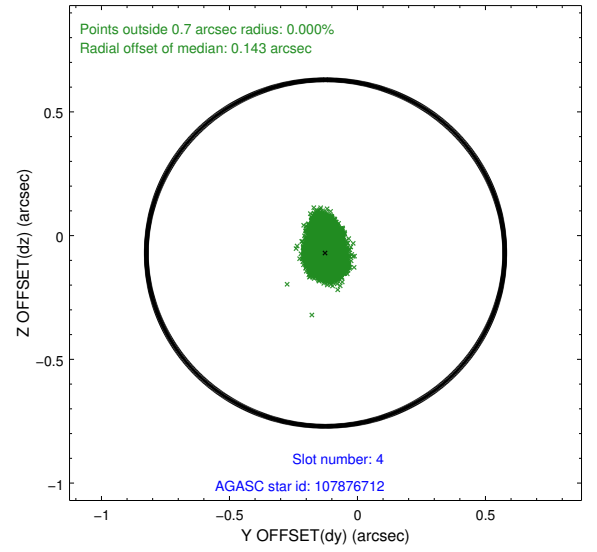
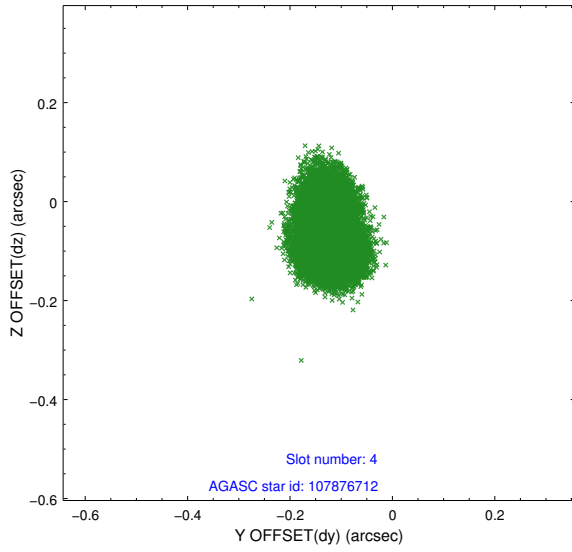
slot	status	id	mag	n_pts	med_dy	med_dz	dr1	dr2	ra	dec	mean_y	mean_z
0	FID	ACIS-I-1	7.23	7850	0.093	-0.078	0.017	0.040	0.000000	0.000000	933.75	-992.26
1	FID	ACIS-I-5	7.22	7850	-0.243	0.080	0.014	0.027	0.000000	0.000000	-1814.66	905.35
2	FID	ACIS-I-6	7.25	7850	0.059	0.070	0.019	0.033	0.000000	0.000000	399.20	1549.90
3	GUIDE	107875800	9.24	15686	0.195	0.085	0.080	0.131	142.127320	12.199859	1492.58	1973.62
4	GUIDE	107876712	6.76	15700	-0.125	-0.070	0.064	0.106	142.139443	12.385311	825.62	1919.57
5	GUIDE	108269584	8.55	15697	0.013	-0.135	0.062	0.099	141.684428	12.507889	617.27	273.81
6	GUIDE	108273032	9.09	15681	-0.016	0.093	0.074	0.121	141.083954	12.520007	870.75	-1821.53
7	GUIDE	108273952	7.80	15625	-0.069	0.023	0.063	0.100	142.111925	12.674985	-191.97	1673.99

2.4 Star Slots

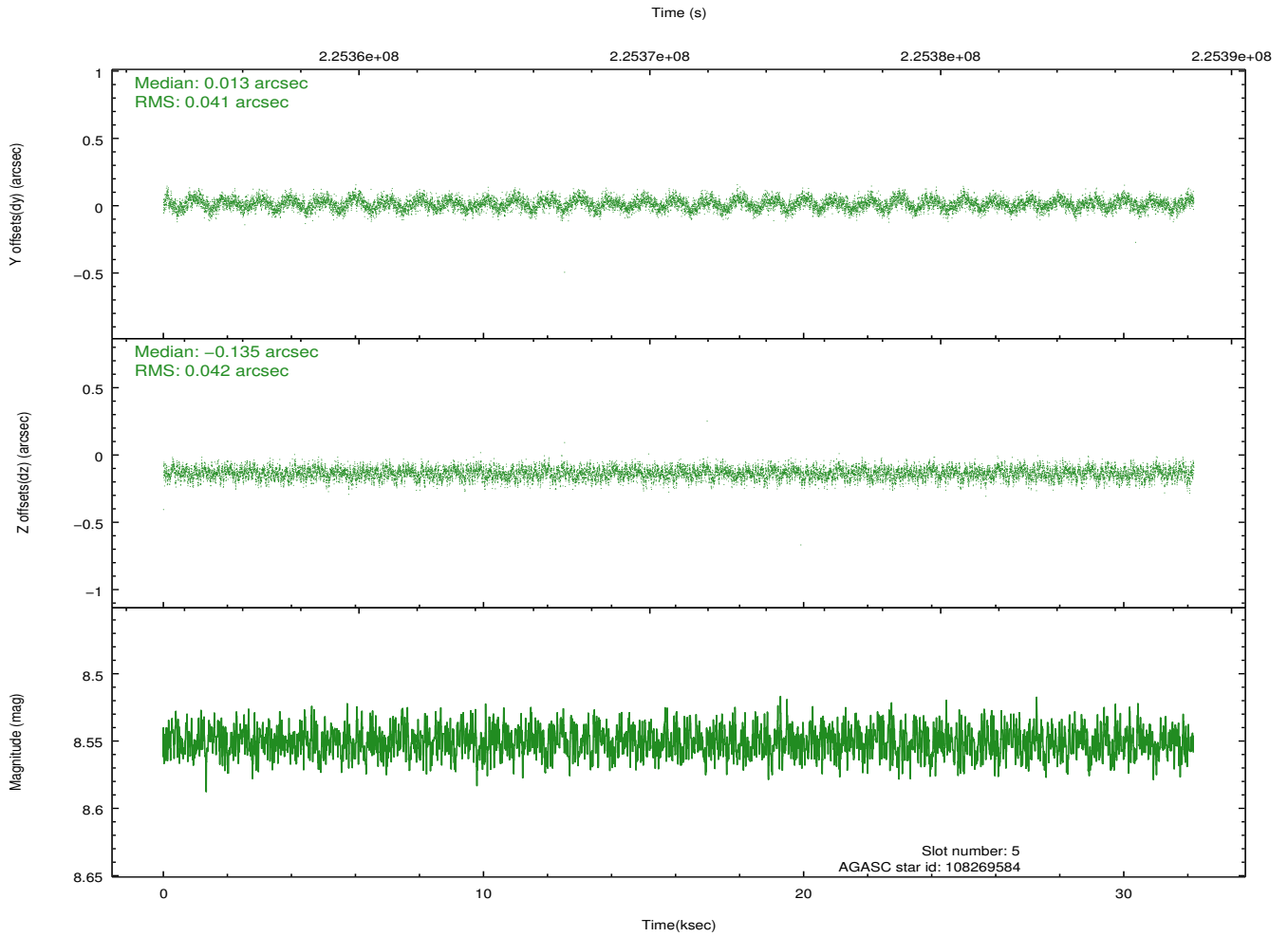
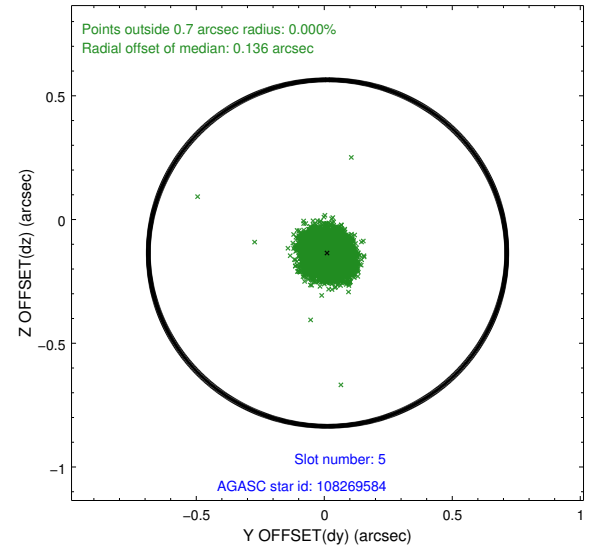
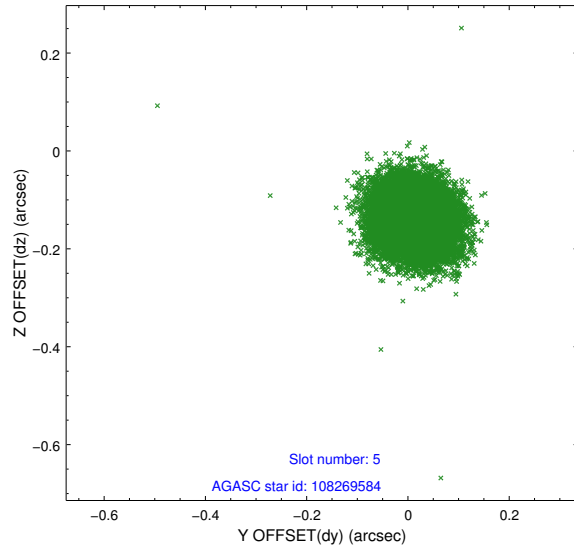
2.4.1 Slot 3



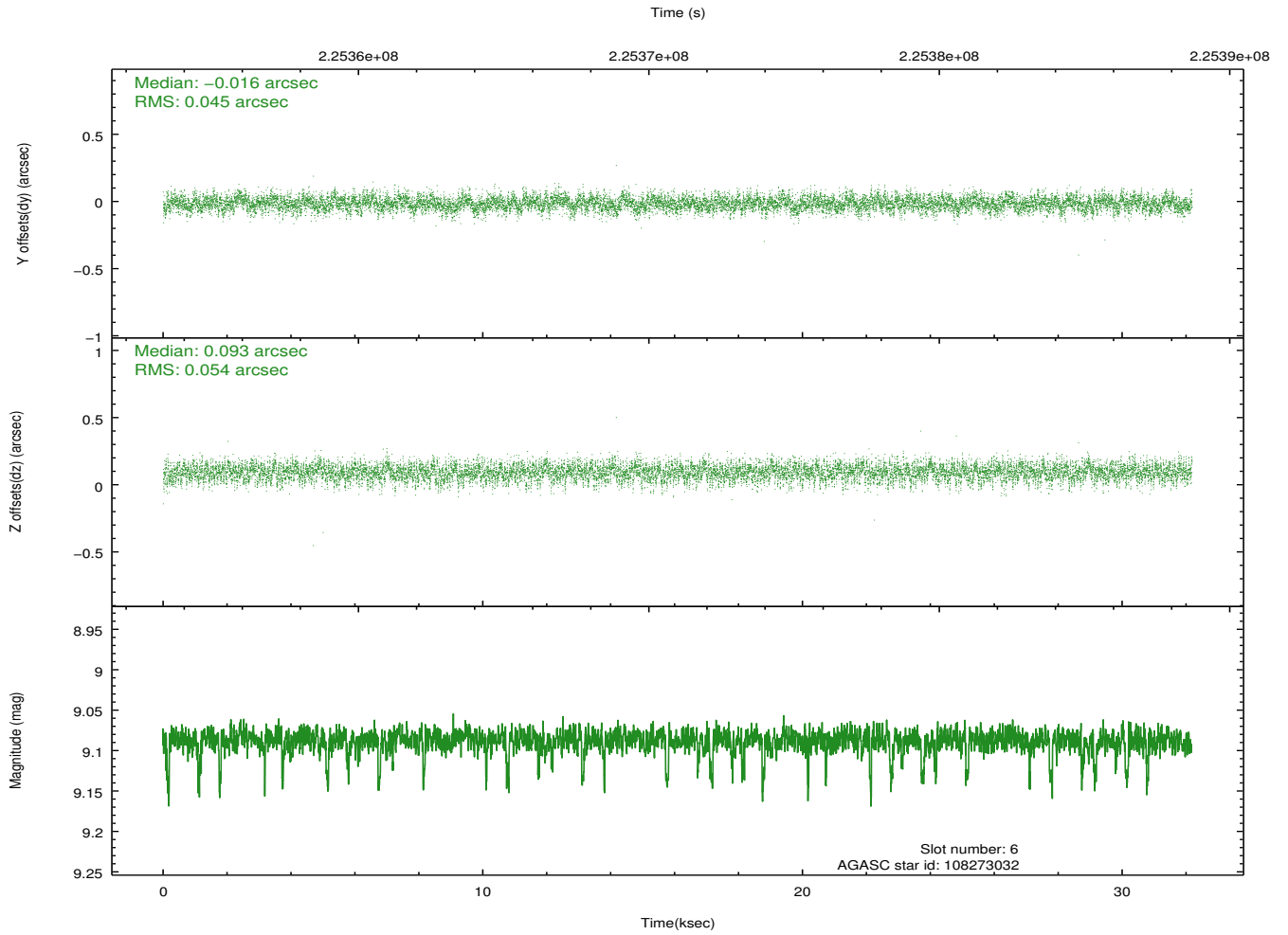
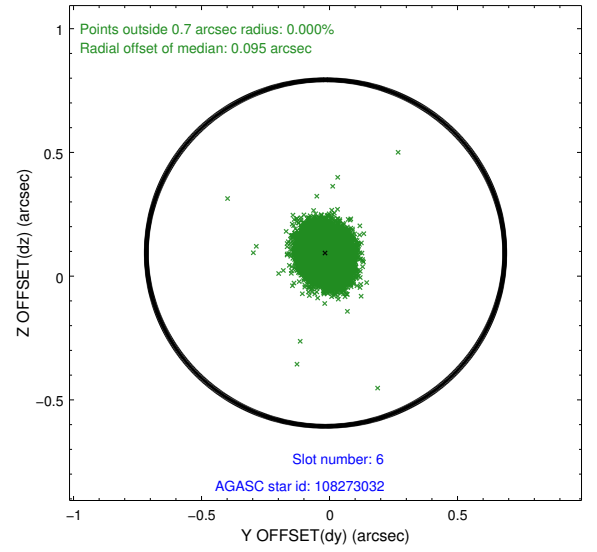
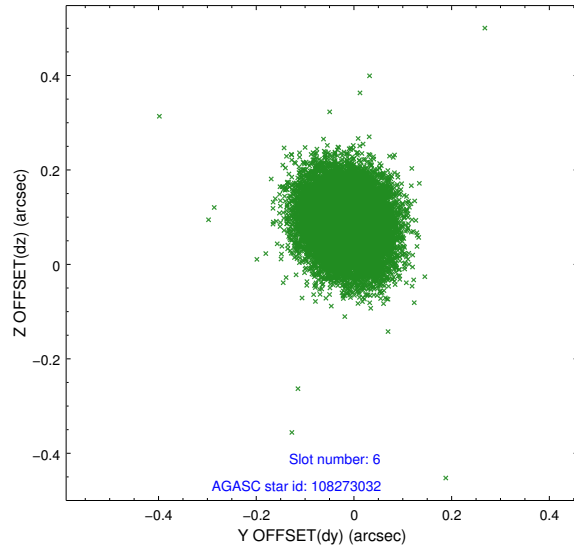
2.4.2 Slot 4



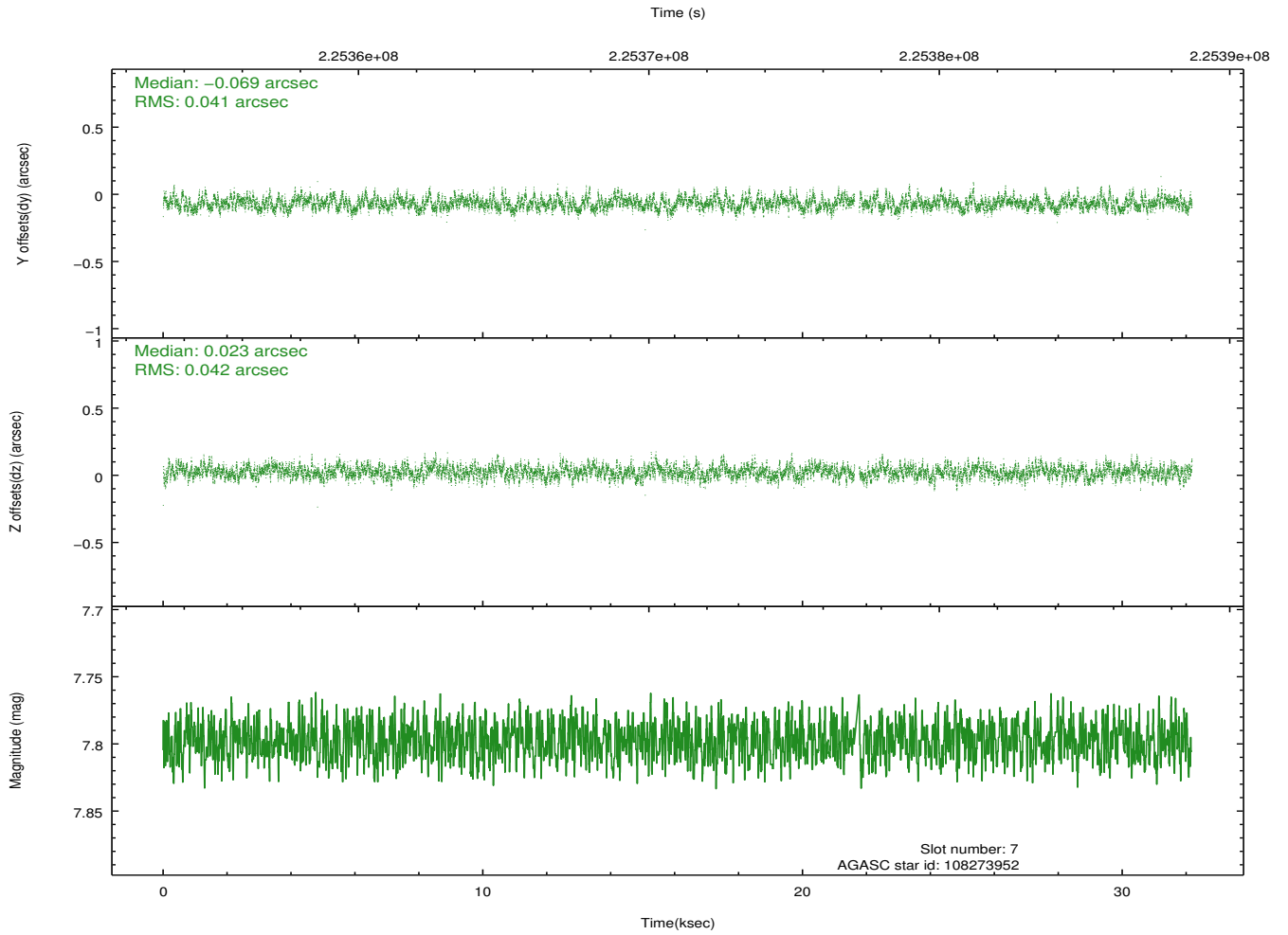
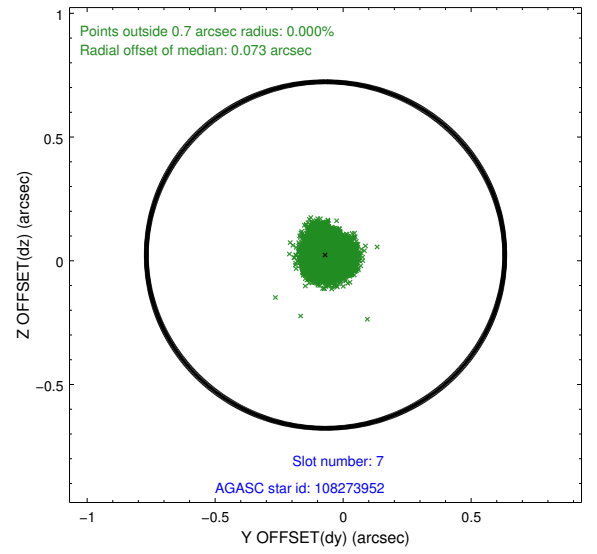
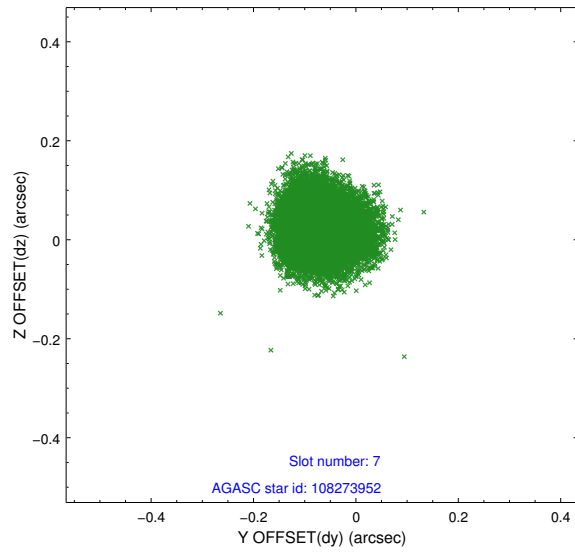
2.4.3 Slot 5



2.4.4 Slot 6

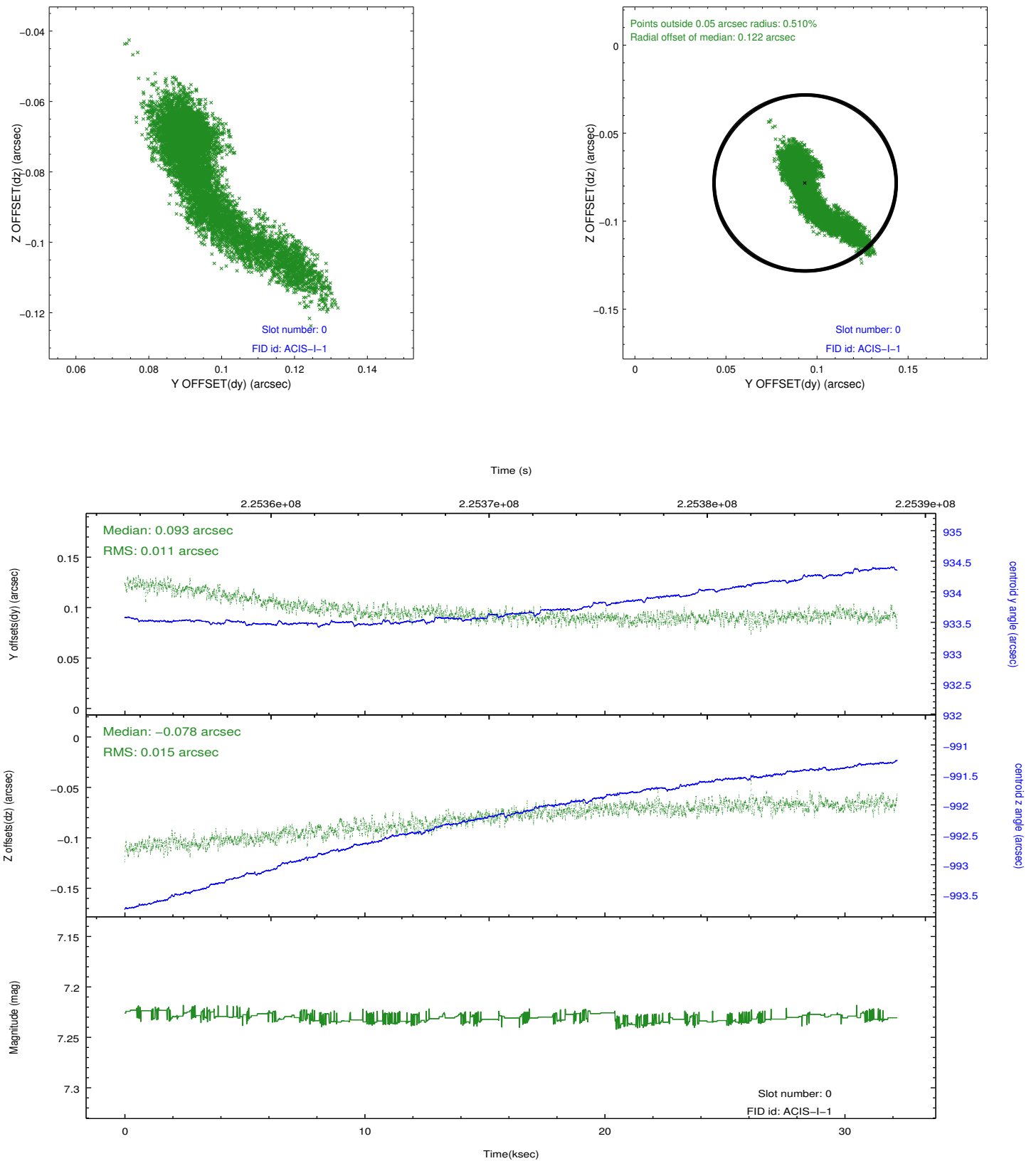


2.4.5 Slot 7

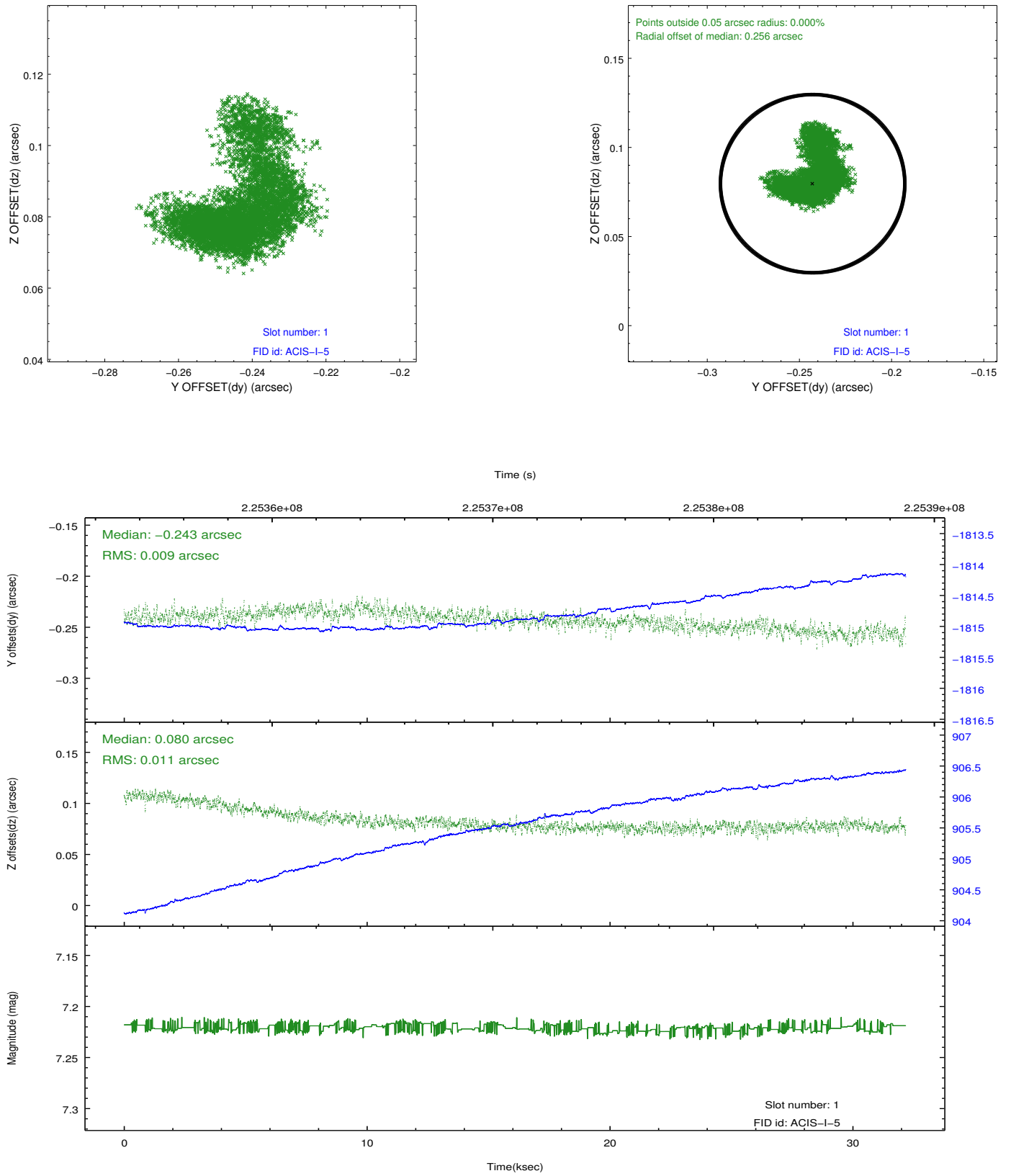


2.5 FID Slots

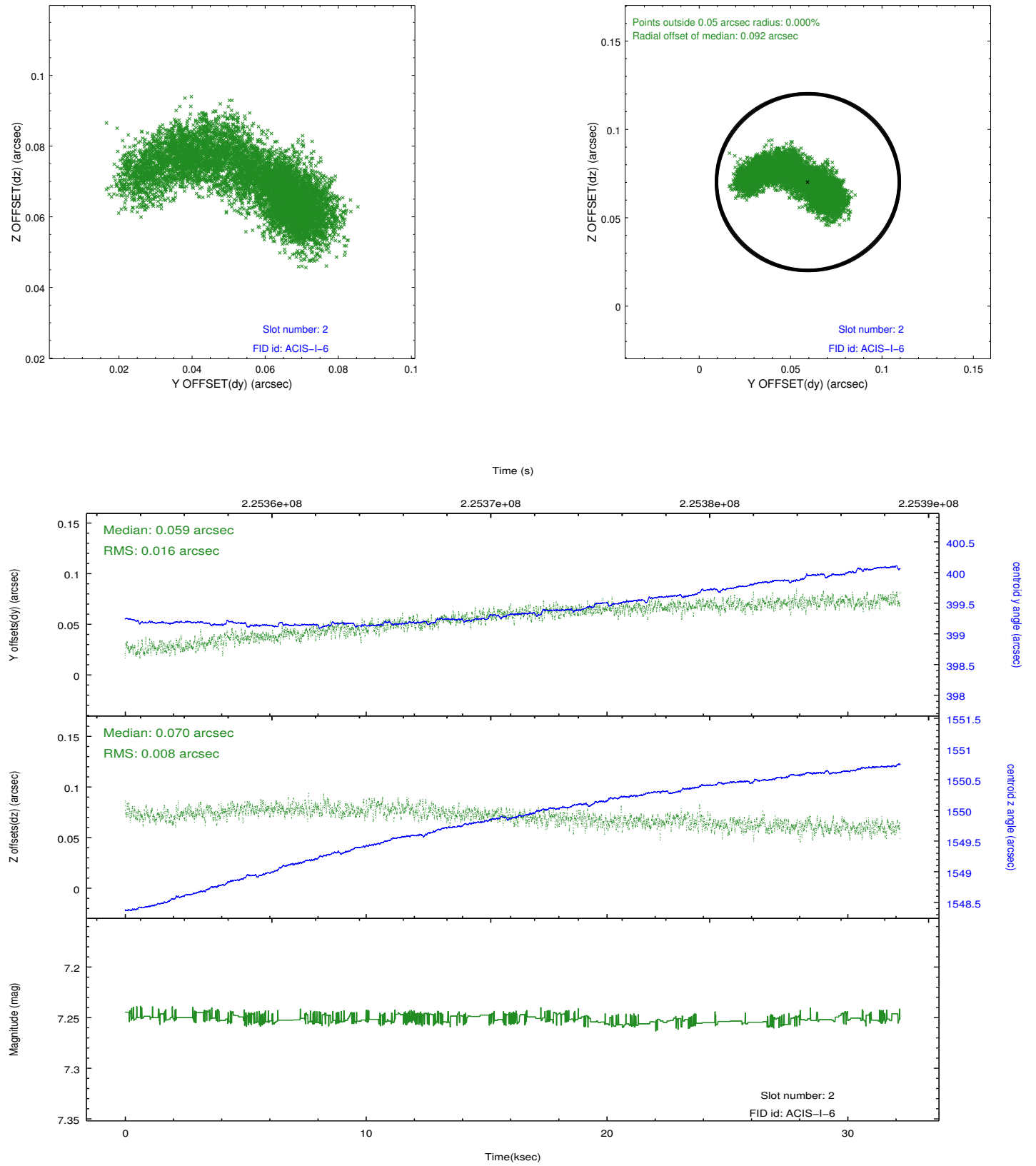
2.5.1 Slot 0



2.5.2 Slot 1



2.5.3 Slot 2



A Summary

A.1 Status

V&V Scientist	Jen Lauer
V&V Date (YYYY-MM-DD)	2013.01.10
V&V Edition	1
V&V Disposition and Status	OK
V&V Charge Time	31.76875

A.2 Comments