

# V&V Reference Report

## L2 ASCDS Version : 7.6.7

Observation 5833 - L2 Version 002  
Chandra X-Ray Center

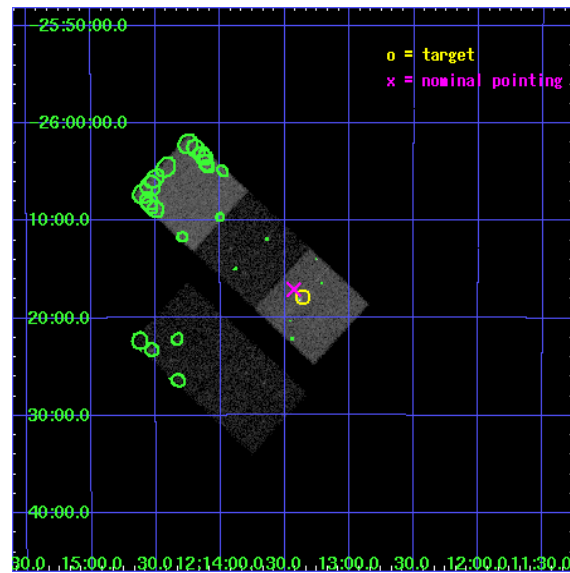
L2 Processing Date: Feb 23 2006

## Contents

<b>1</b>	<b>Front</b>	<b>2</b>
<b>2</b>	<b>OBI</b>	<b>3</b>
2.1	OBI . . . . .	3
2.1.1	Images . . . . .	3
2.1.2	Bias . . . . .	3
2.1.3	Parameters . . . . .	4
2.1.4	Events . . . . .	4
2.2	Compared Parameters . . . . .	5
2.3	Aspect . . . . .	6
2.4	Star Slots . . . . .	9
2.4.1	Slot 3 . . . . .	9
2.4.2	Slot 4 . . . . .	10
2.4.3	Slot 5 . . . . .	11
2.4.4	Slot 6 . . . . .	12
2.4.5	Slot 7 . . . . .	13
2.5	FID Slots . . . . .	14
2.5.1	Slot 0 . . . . .	14
2.5.2	Slot 1 . . . . .	15
2.5.3	Slot 2 . . . . .	16
<b>3</b>	<b>Point Sources</b>	<b>17</b>
<b>A</b>	<b>Summary</b>	<b>18</b>
A.1	Status . . . . .	18
A.2	Comments . . . . .	18

# 1 Front

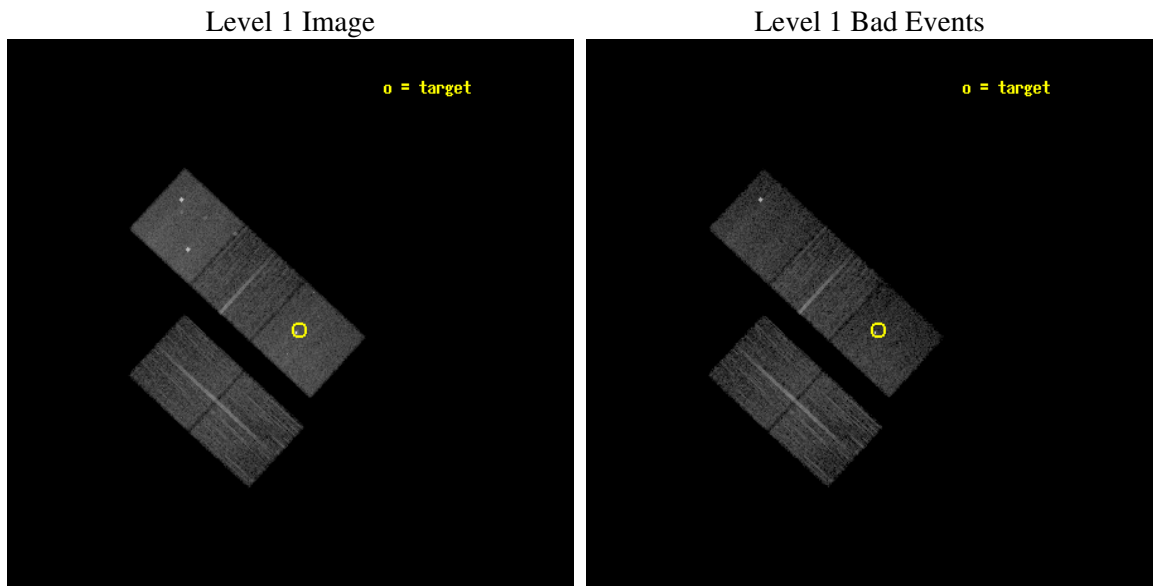
seq_num	800542
obs_id	5833
title	X-ray emission from clusters of galaxies from the REFLEX sample.
observer	Dr. Peter Predehl
object	RXCJ1213.3-2617
dtcycle	0
cycle	P
ra_targ	183.339167
dec_targ	-26.2975
ra_nom	183.35737077753
dec_nom	-26.284775949884
roll_nom	42.629554528898
revision	2
ontime	10037.7999807
livetime	9906.6487342313
ontime2	10037.7999807
ontime3	10037.7999807
ontime5	10037.7999807
ontime6	10037.7999807
ontime7	10037.7999807
l2events	83379



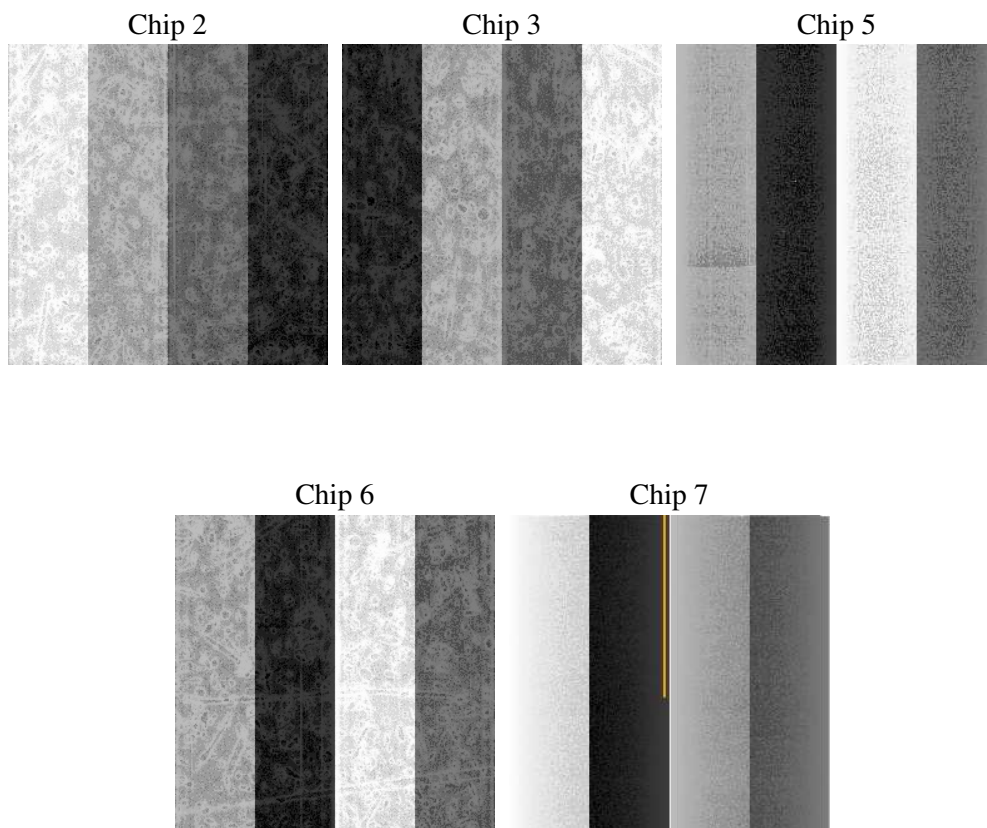
## 2 OBI

### 2.1 OBI

#### 2.1.1 Images



#### 2.1.2 Bias



### 2.1.3 Parameters

obi_num	0
ascdsver	7.6.7
caldbver	3.2.1
date	2006-02-23T21:39:05
revision	2

sched_exp_time	10000.000000
ontime	10041.808714747
ontime2	10041.808714747
ontime3	10041.808714747
ontime5	10041.808734655
ontime6	10041.808714747
ontime7	10041.808714747
l1events	338810

### 2.1.4 Events

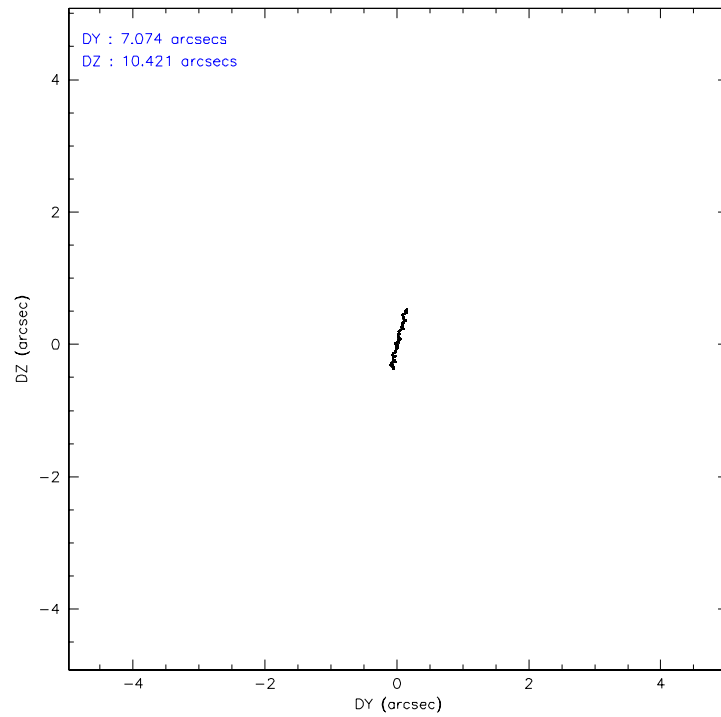
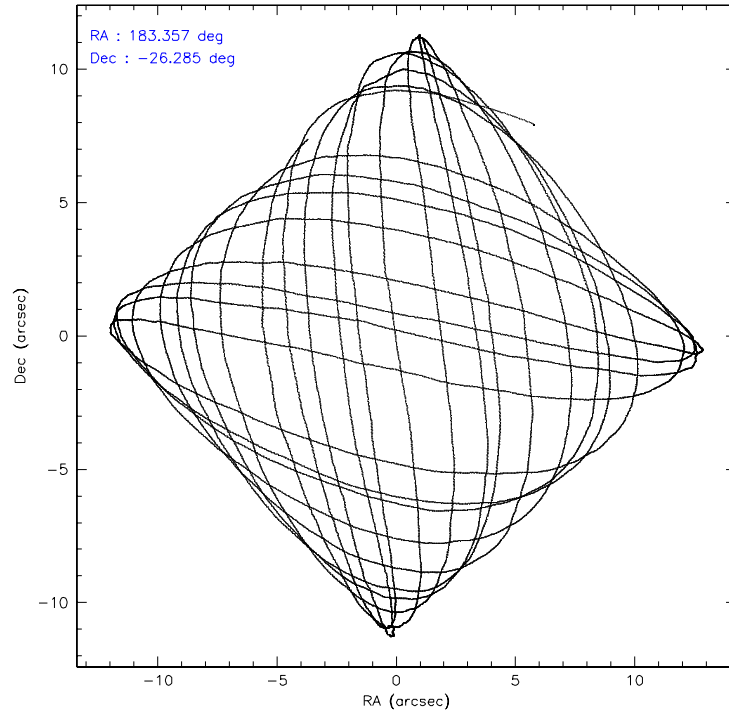
	ccd 2	ccd 3	ccd 5	ccd 6	ccd 7
level 1 events	59388	60100	86635	59316	73371
rejected events	53180	54417	44745	52727	41736
rejected %	89%	90%	51%	88%	56%

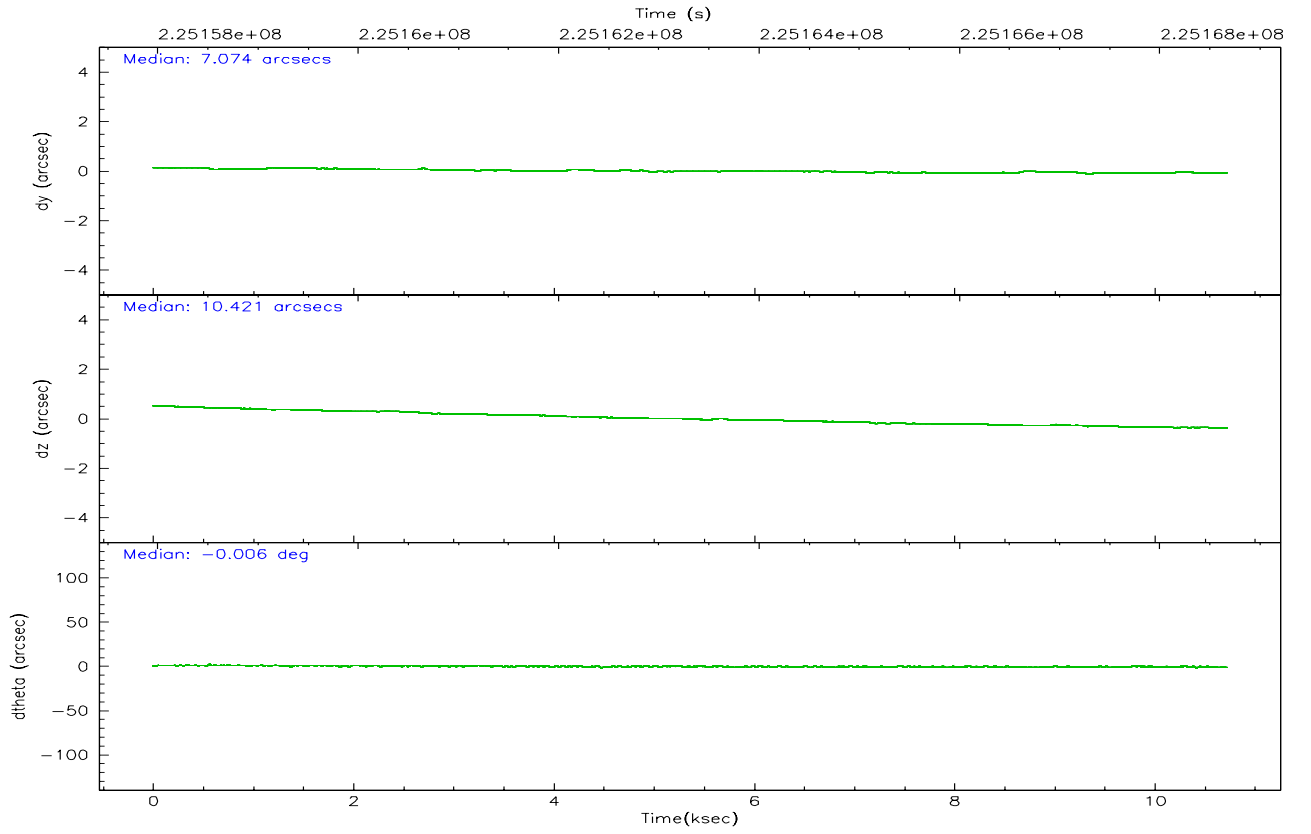
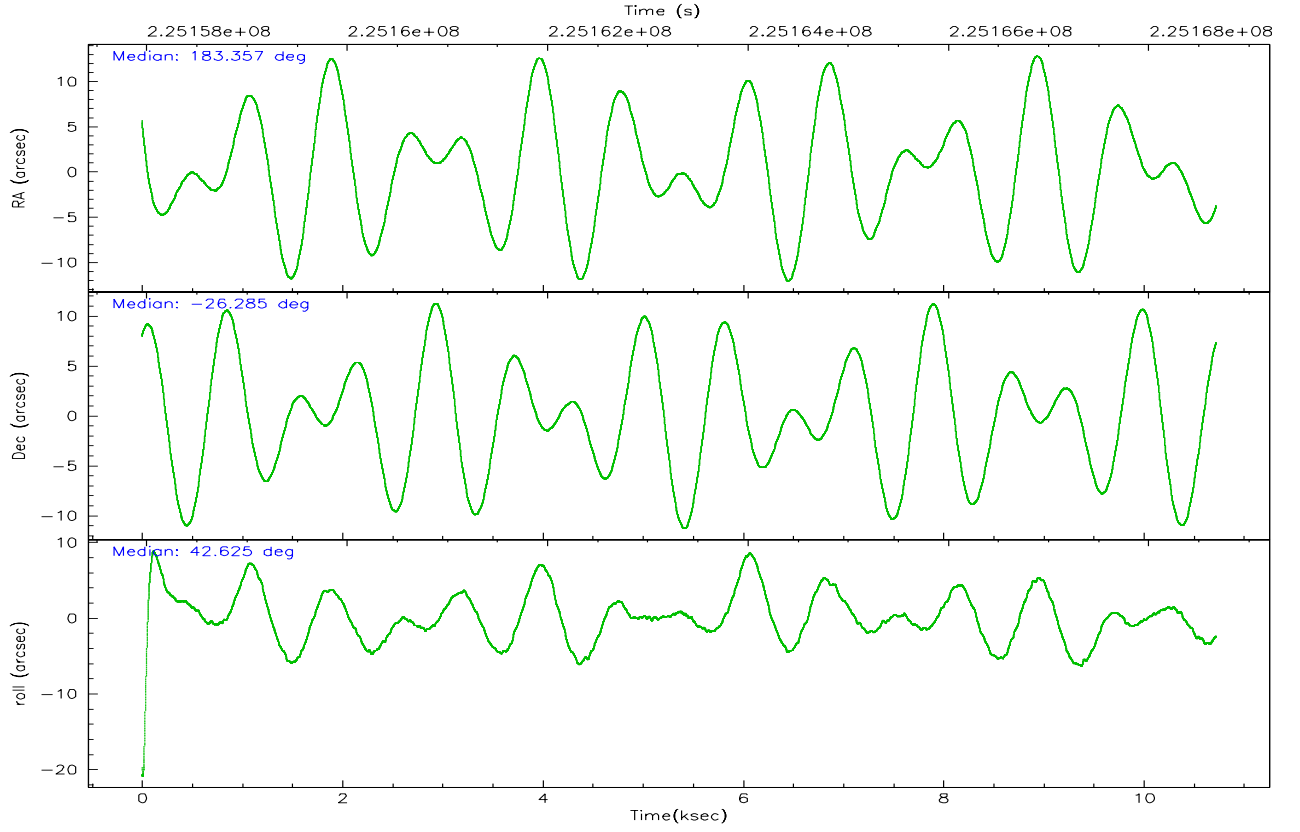
	ccd 2	ccd 3	ccd 5	ccd 6	ccd 7
grade 0 events	2303	2033	4705	2446	2357
	3%	3%	5%	4%	3%
grade 1 events	30	25	49	27	93
	0%	0%	0%	0%	0%
grade 2 events	1423	1212	12890	1404	7773
	2%	2%	14%	2%	10%
grade 3 events	667	682	1017	730	1970
	1%	1%	1%	1%	2%
grade 4 events	688	656	1036	683	1938
	1%	1%	1%	1%	2%
grade 5 events	1836	2319	4391	2391	5497
	3%	3%	5%	4%	7%
grade 6 events	1133	1103	22262	1334	17614
	1%	1%	25%	2%	24%
grade 7 events	51308	52070	40285	50301	36129
	86%	86%	46%	84%	49%

## 2.2 Compared Parameters

Parameter	Planned	Actual	Parameter	Planned	Actual
Instrument	ACIS	ACIS	Obspar format version number	6	6
Detector	ACIS-23567	ACIS-23567	Obspar file type	PREDICTED	ACTUAL
Grating	NONE	NONE	Obspar update status	NONE	UPDATED
Data mode	VFAINT	VFAINT	On-chip summing requested	N	N
Observation mode	POINTING	POINTING	Subarray requested	NONE	NONE
Pointing RA	183.348775	183.3573707775325	Alternating exposures requested	N	N
Pointing Dec	-26.310851	-26.28477594988374	Primary exposure time	0.000000	3.1
Pointing Roll	42.469157	42.62955452889842			
SIM focus pos (mm)	-0.684267	-0.6828225247311905			
SIM defocus (mm)	0	0.001444936568705701			
SIM translation stage pos (mm)	-190.132523	-190.1425803651734			
SIM translation stage offset (mm)	0	0.01005778216563158			
Observation start time	225158671.184000	225157470.65316			
Observation start date	2005-02-19T00:03:27	2005-02-18T23:44:30			
Observation end time	225168671.184000	225169454.9537			
Observation end date	2005-02-19T02:50:07	2005-02-19T03:04:14			
Read mode	TIMED	TIMED			

## 2.3 Aspect



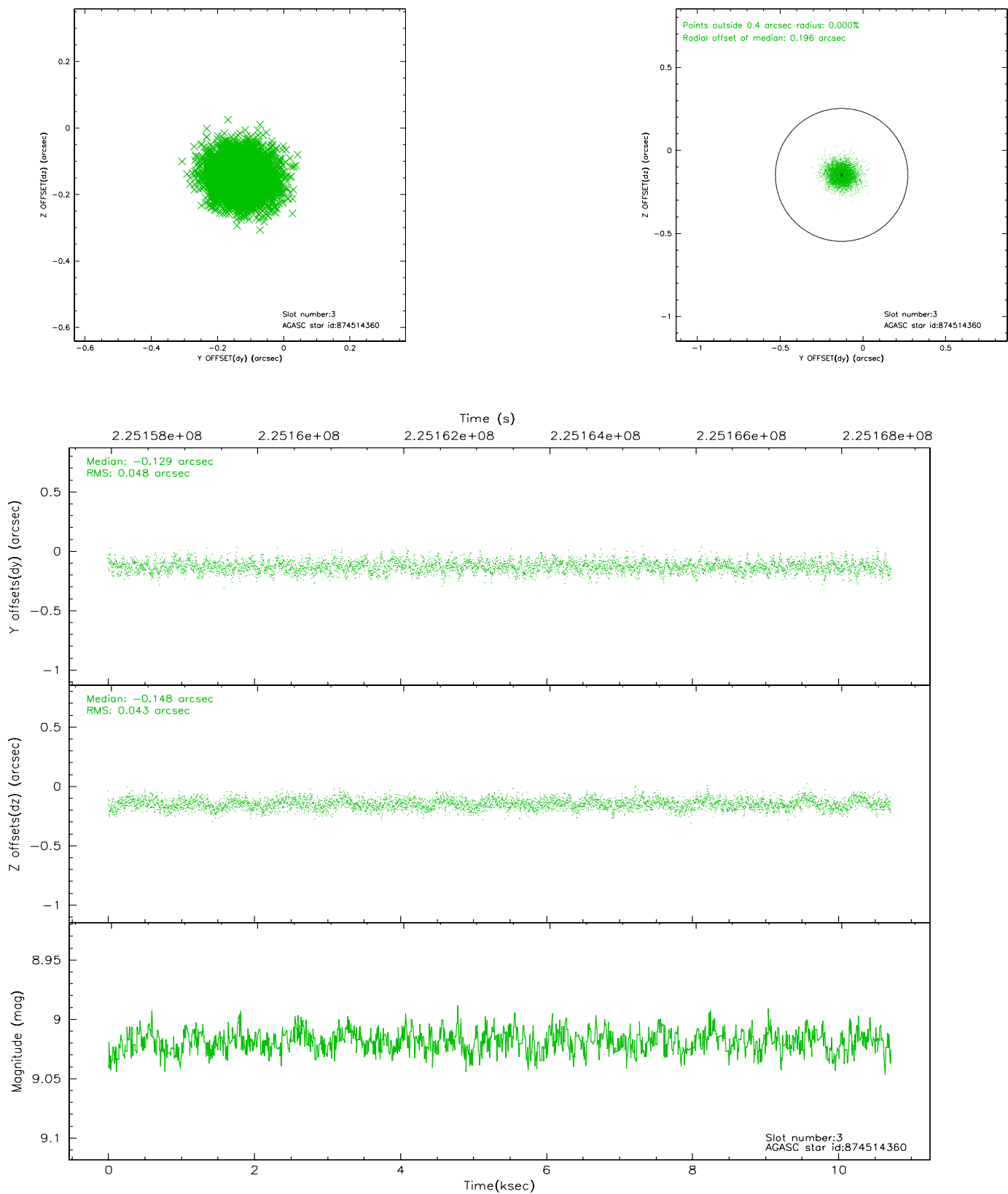


### Slot Statistics

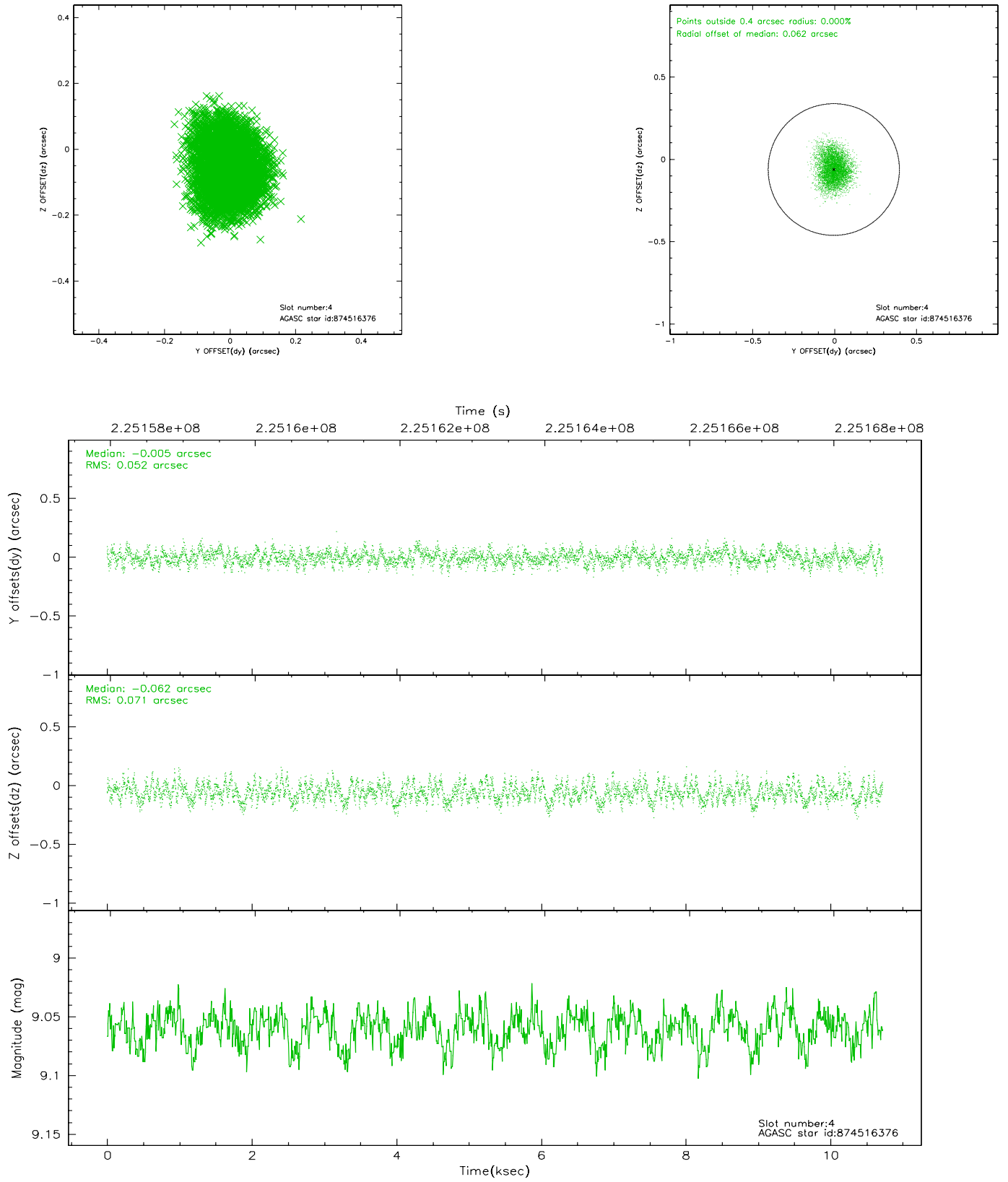
slot	status	id	mag	n_pts	med_dy	med_dz	dr1	dr2	ra	dec	mean_y	mean_z
0	FID	ACIS-S-1	7.18	2616	0.012	-0.030	0.016	0.026	0.000000	0.000000	936.22	-1727.31
1	FID	ACIS-S-5	7.24	2617	-0.031	0.011	0.006	0.010	0.000000	0.000000	-1812.56	169.78
2	FID	ACIS-S-6	7.35	2616	-0.002	0.032	0.015	0.023	0.000000	0.000000	401.22	814.32
3	GUIDE	874514360	9.02	5231	-0.129	-0.148	0.069	0.113	183.822590	-25.851738	2246.75	180.84
4	GUIDE	874516376	9.06	5228	-0.005	-0.062	0.095	0.150	183.172138	-25.821197	768.52	1686.67
5	GUIDE	875044224	9.30	5230	0.218	0.094	0.085	0.137	183.334680	-26.976618	-1650.68	-1737.00
6	GUIDE	875044344	8.44	5230	-0.003	0.149	0.074	0.118	183.999961	-26.564539	926.66	-2093.31
7	GUIDE	874515864	9.23	5229	-0.086	-0.034	0.070	0.115	183.646817	-25.860385	1806.96	543.36

## 2.4 Star Slots

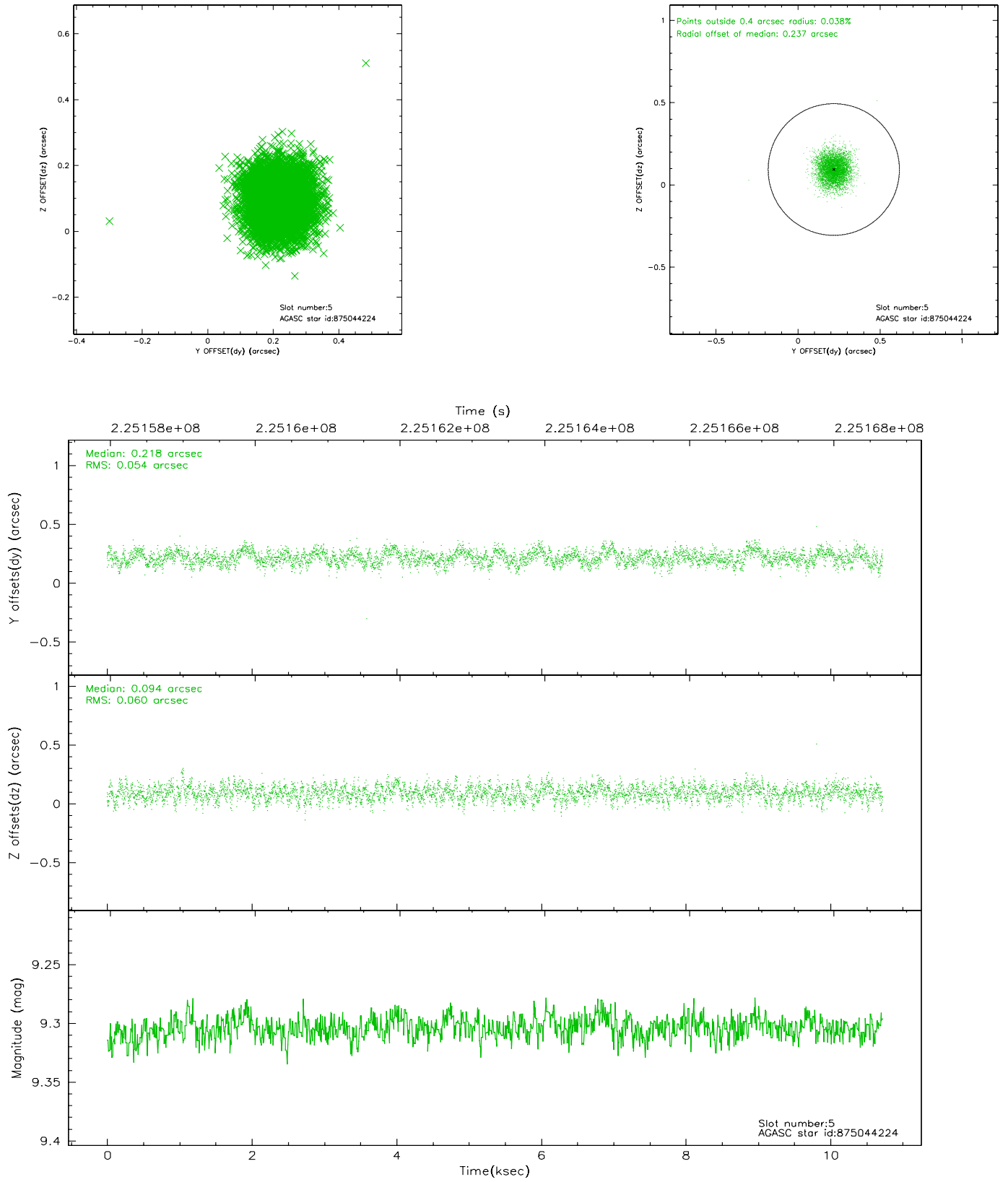
### 2.4.1 Slot 3



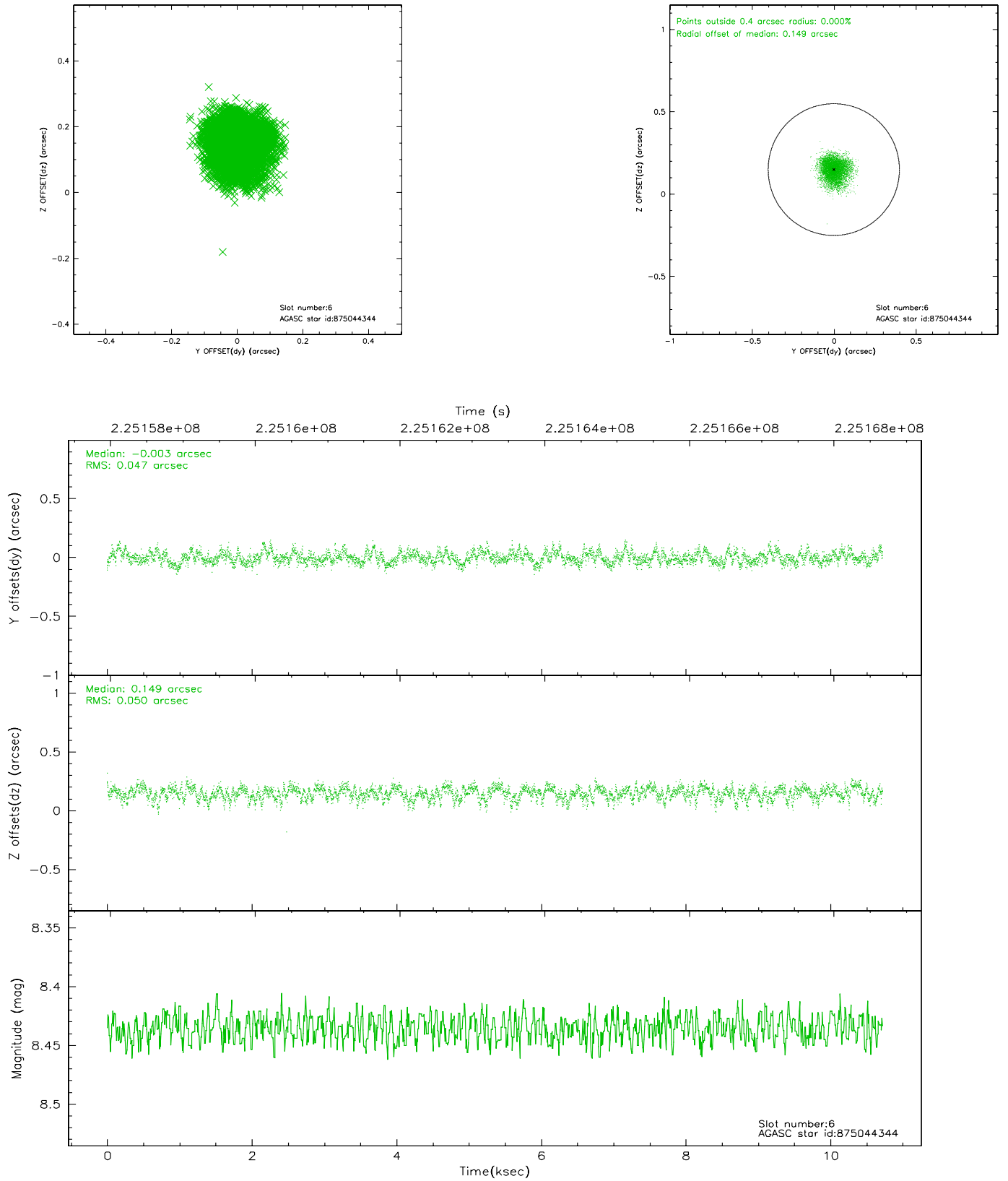
## 2.4.2 Slot 4



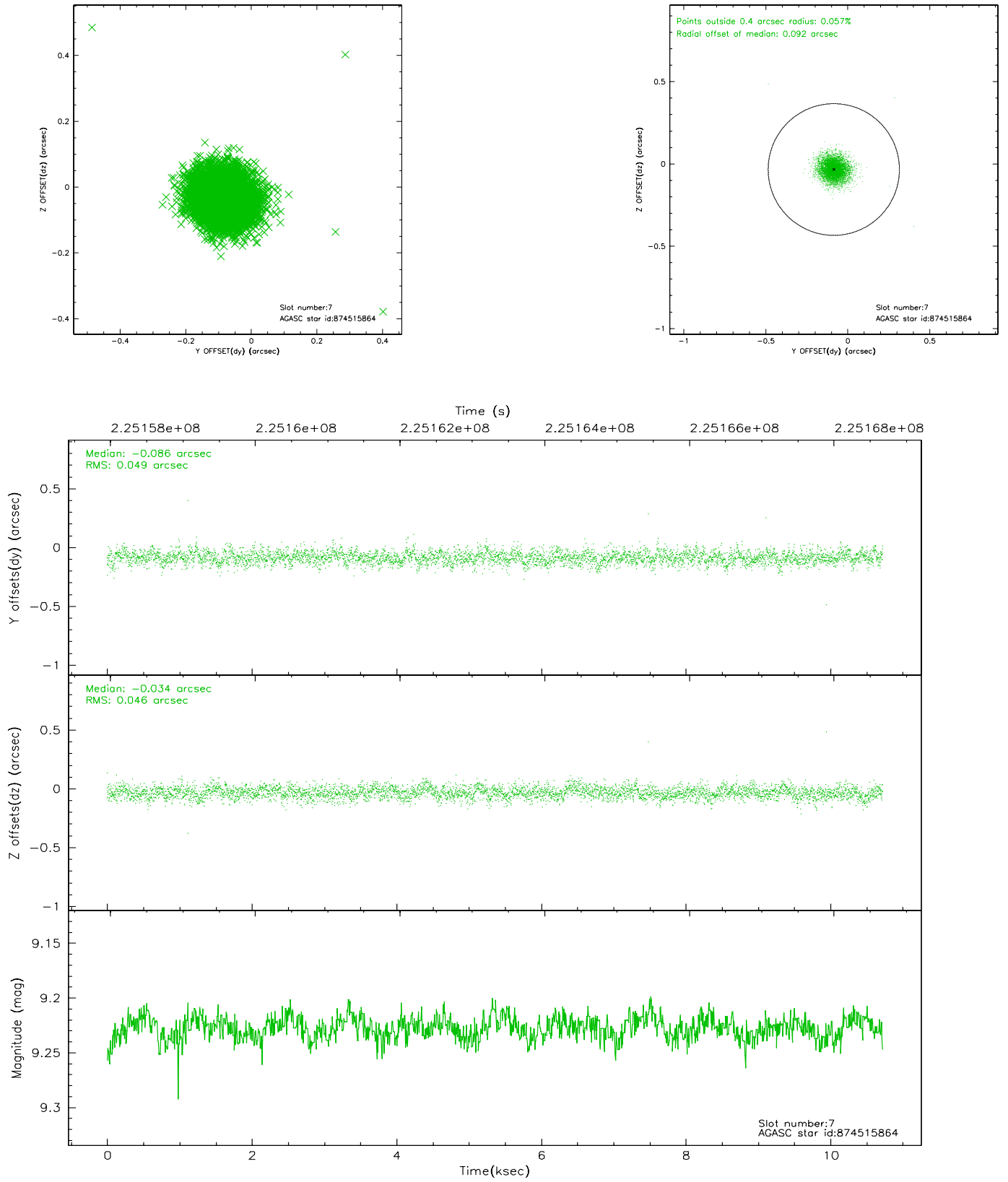
### 2.4.3 Slot 5



## 2.4.4 Slot 6

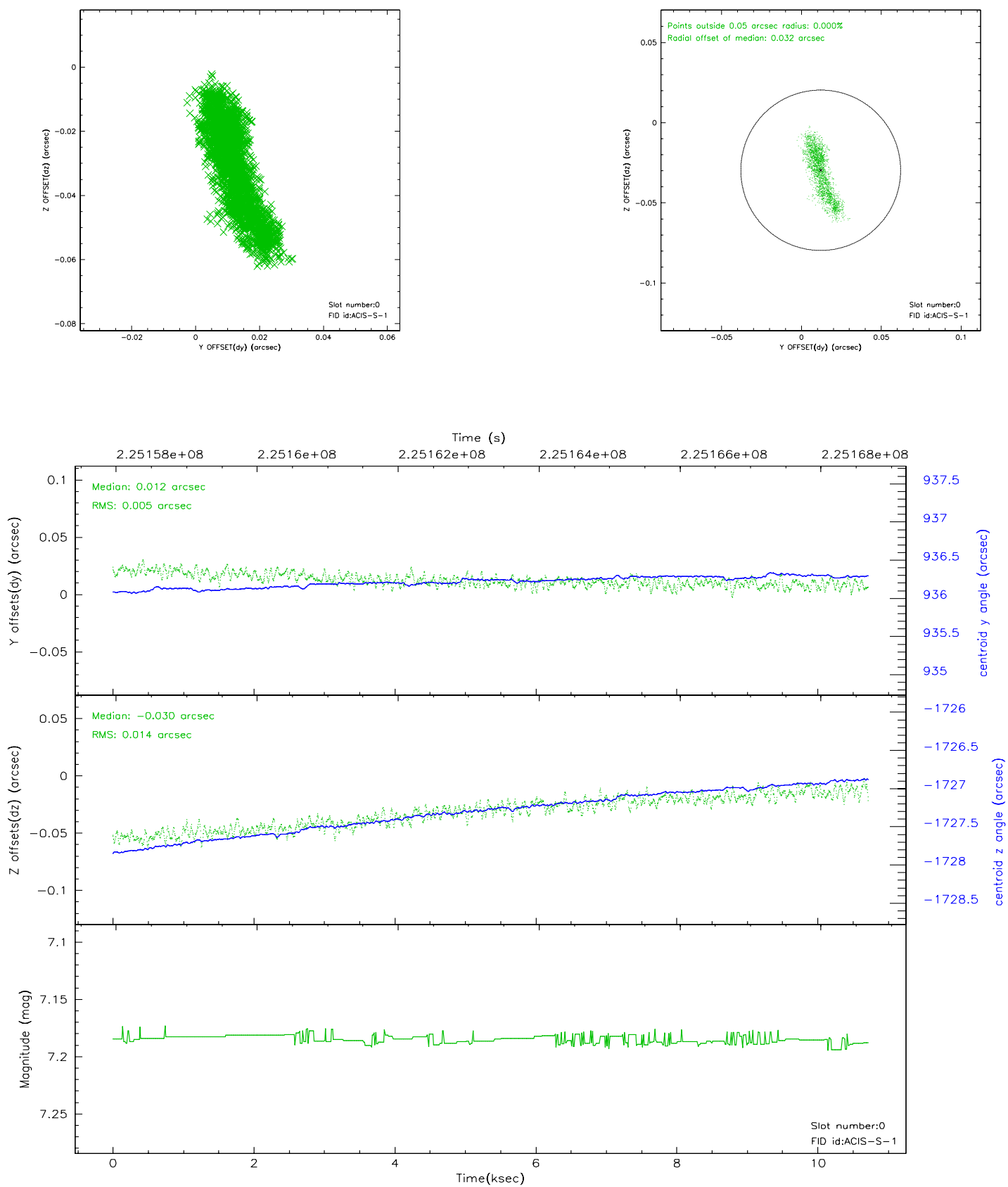


## 2.4.5 Slot 7

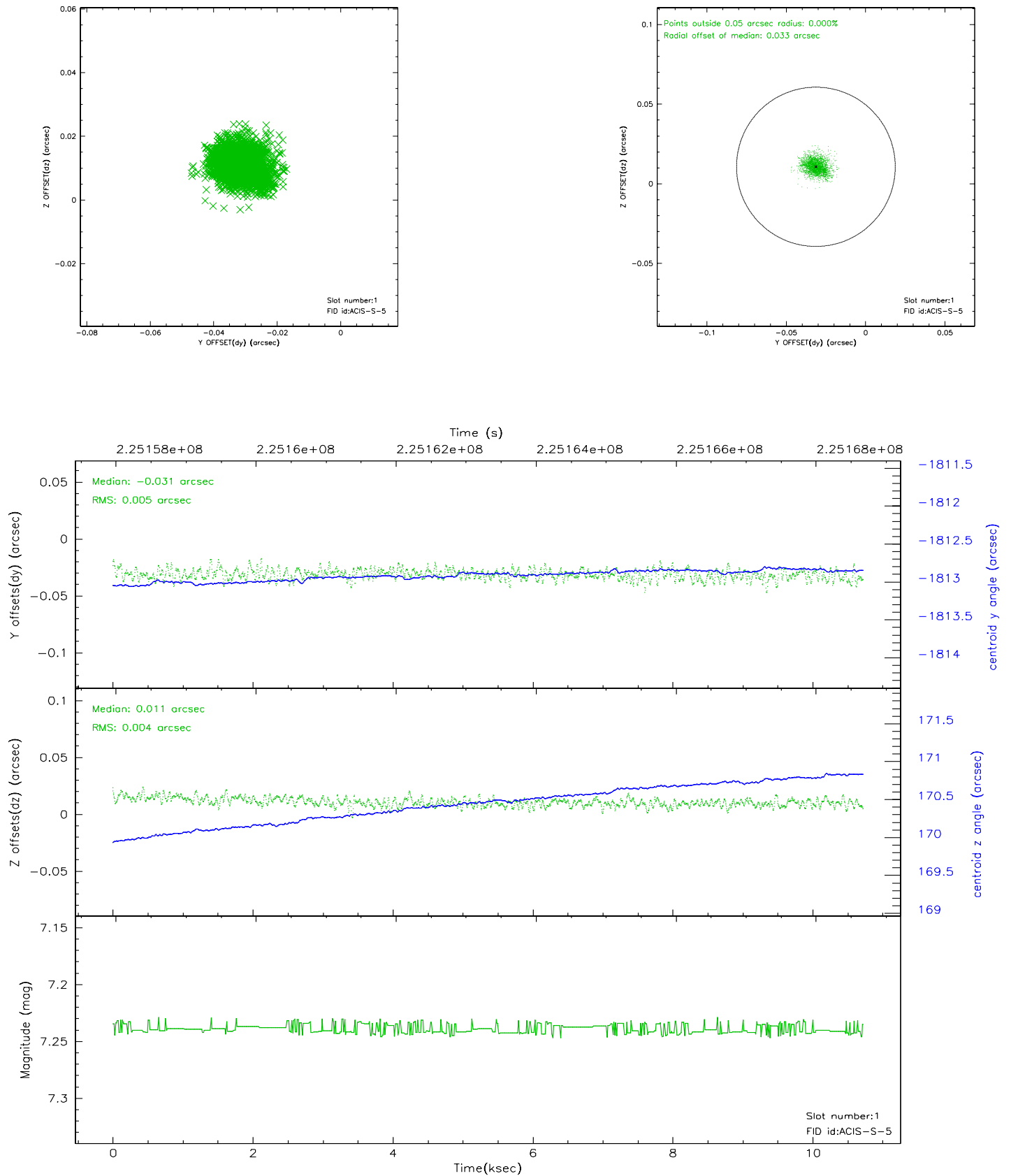


## 2.5 FID Slots

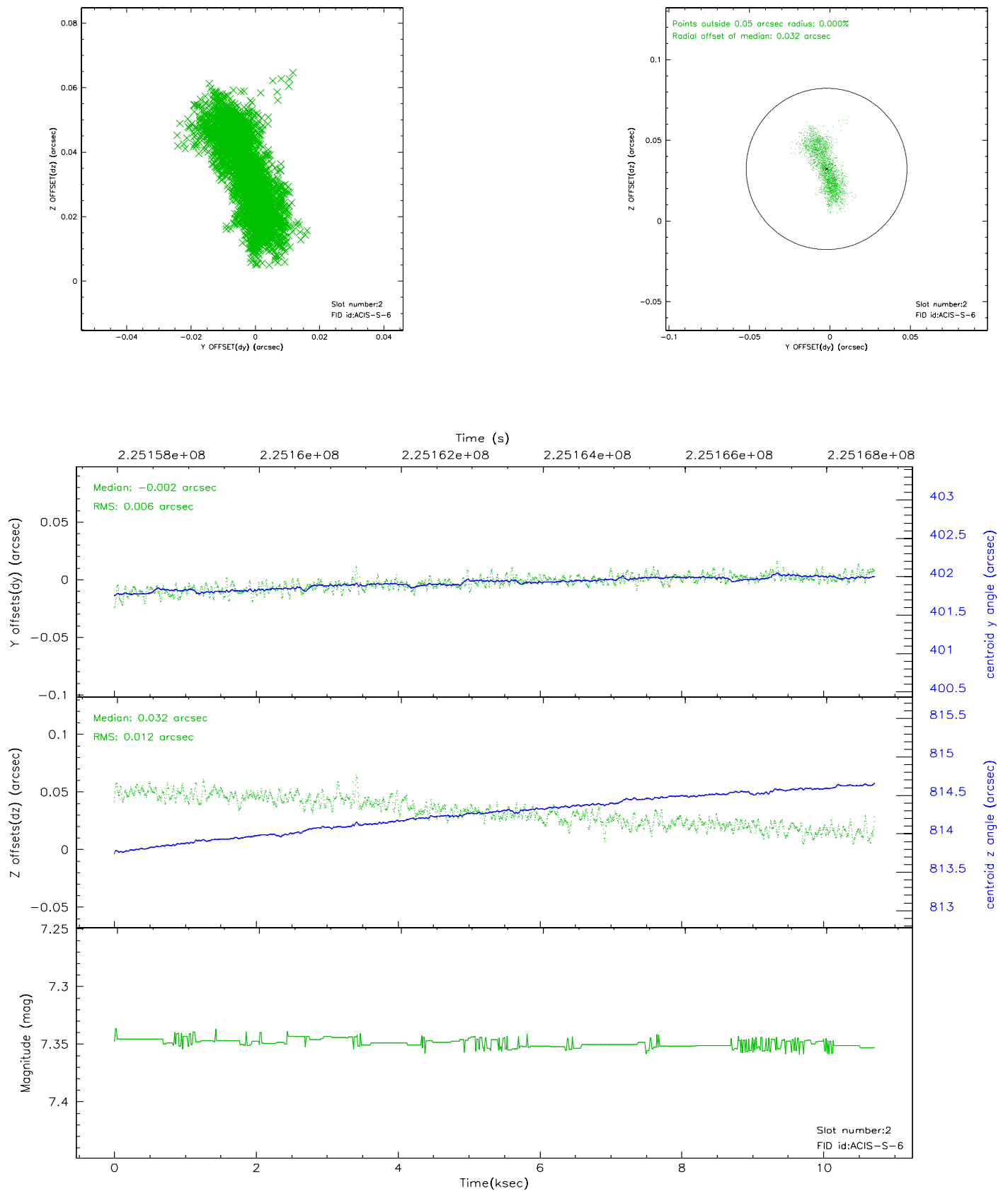
### 2.5.1 Slot 0



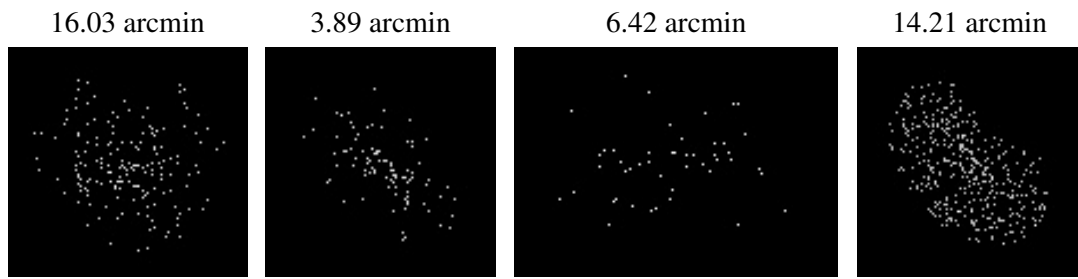
## 2.5.2 Slot 1



### 2.5.3 Slot 2



### 3 Point Sources



## A Summary

### A.1 Status

V&V Scientist	Beth Sundheim
V&V Date (YYYY-MM-DD)	2006.02.24
V&V Edition	1
V&V Disposition and Status	OK
V&V Charge Time	10.03779

### A.2 Comments