

V&V Reference Report

L2 ASCDS Version : 7.6.7

Observation 5819 - L2 Version 002
Chandra X-Ray Center

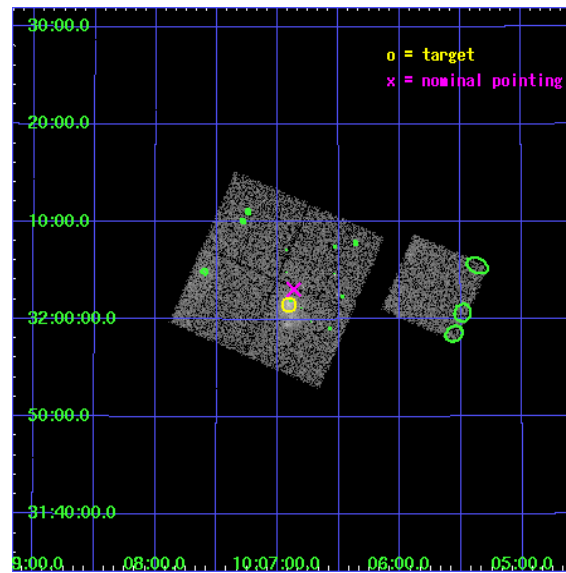
L2 Processing Date: Feb 18 2006

Contents

1	Front	2
2	OBI	3
2.1	OBI	3
2.1.1	Images	3
2.1.2	Bias	3
2.1.3	Parameters	4
2.1.4	Events	4
2.2	Compared Parameters	5
2.3	Aspect	6
2.4	Star Slots	9
2.4.1	Slot 3	9
2.4.2	Slot 4	10
2.4.3	Slot 5	11
2.4.4	Slot 6	12
2.4.5	Slot 7	13
2.5	FID Slots	14
2.5.1	Slot 0	14
2.5.2	Slot 1	15
2.5.3	Slot 2	16
3	Point Sources	17
A	Summary	18
A.1	Status	18
A.2	Comments	18

1 Front

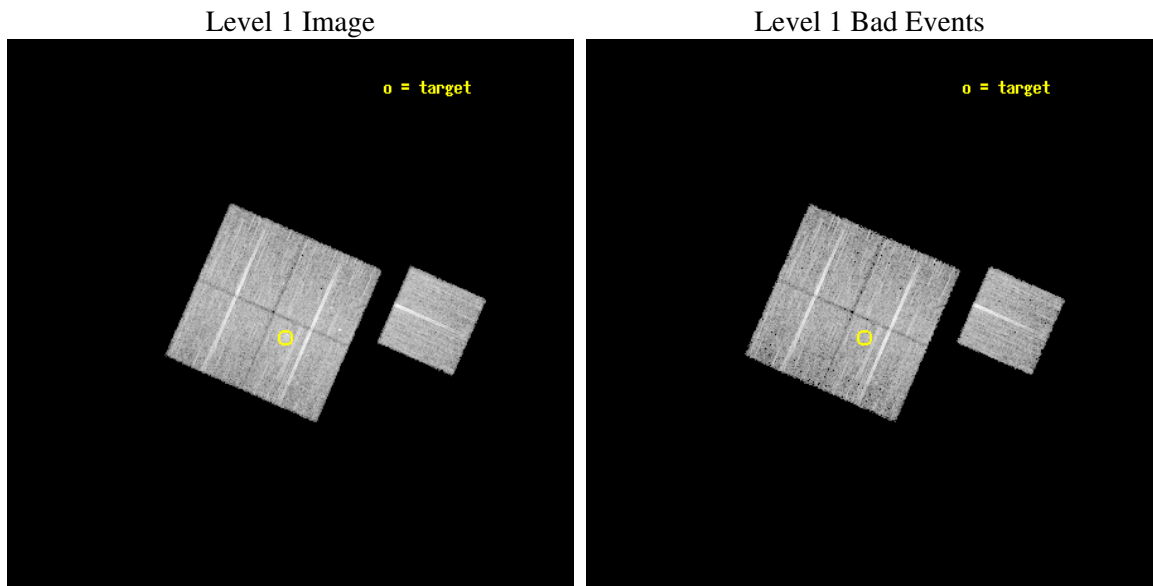
seq_num	800532
obs_id	5819
title	MACS: The most massive galaxy clusters at $z>0.3$
observer	Dr. Harald Ebeling
object	MACSJ1006.9+3200
dtcycle	0
cycle	P
ra_targ	151.727917
dec_targ	32.025389
ra_nom	151.71690575152
dec_nom	32.051359497282
roll_nom	113.61559024857
revision	2
ontime	11032.858988523
livetime	10888.706563566
ontime0	11035.999978781
ontime1	11035.999978781
ontime2	11032.858988523
ontime3	11032.858988523
ontime6	11035.999978781
l2events	31275



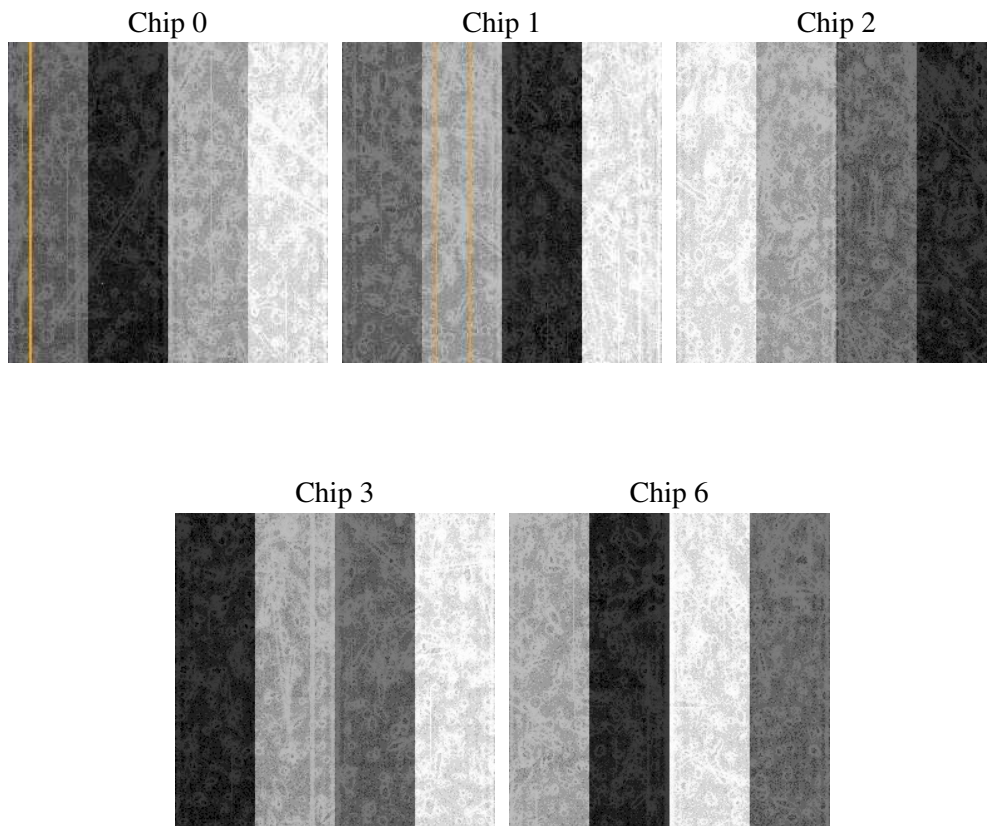
2 OBI

2.1 OBI

2.1.1 Images



2.1.2 Bias



2.1.3 Parameters

obi_num	1
ascdsver	7.6.7
caldbver	3.2.1
date	2006-02-18T08:30:10
revision	2

sched_exp_time	11000.000000
ontime	11037.52293843
ontime0	11040.663928688
ontime1	11040.66390878
ontime2	11037.522918522
ontime3	11037.52293843
ontime6	11040.663928688
l1events	330992

2.1.4 Events

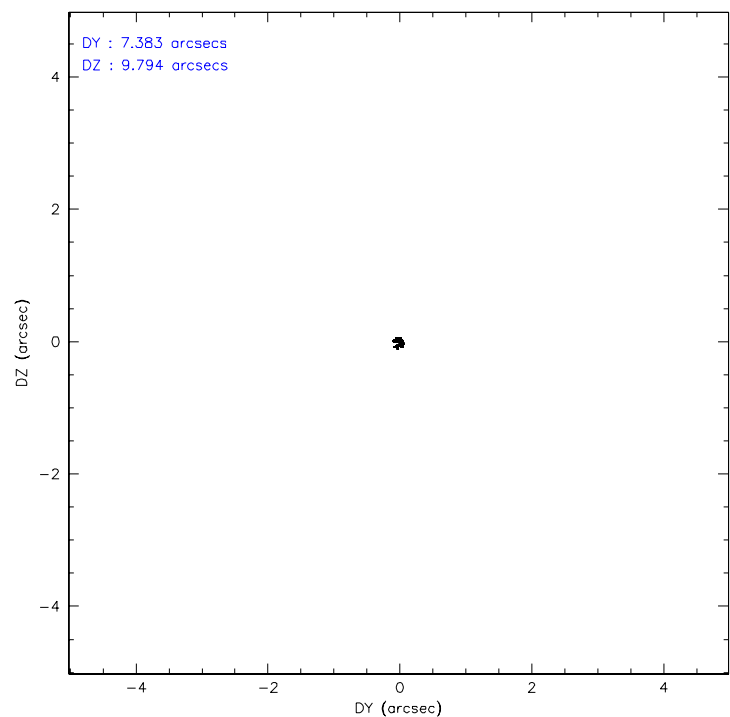
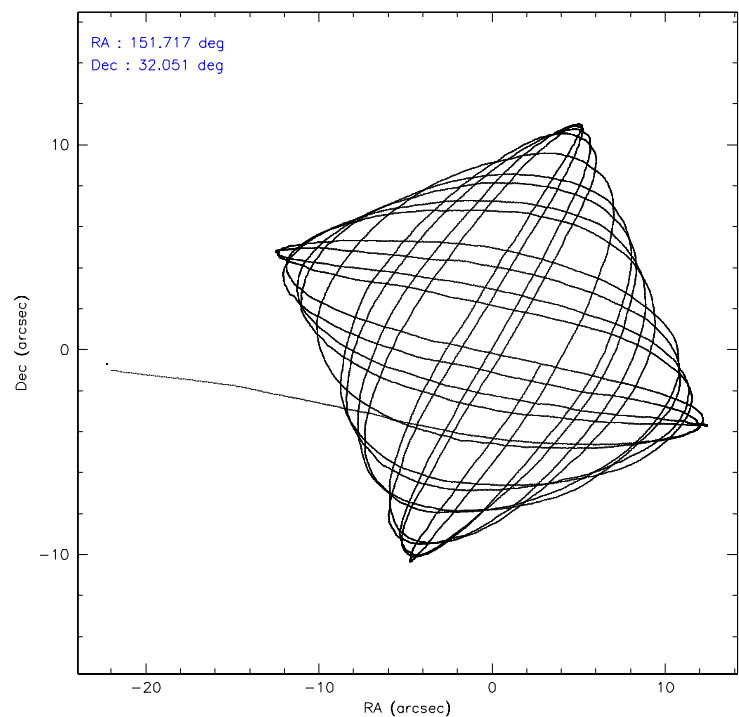
	ccd 0	ccd 1	ccd 2	ccd 3	ccd 6
level 1 events	63708	62112	69244	66843	69085
rejected events	56908	54485	62056	58173	62193
rejected %	89%	87%	89%	87%	90%

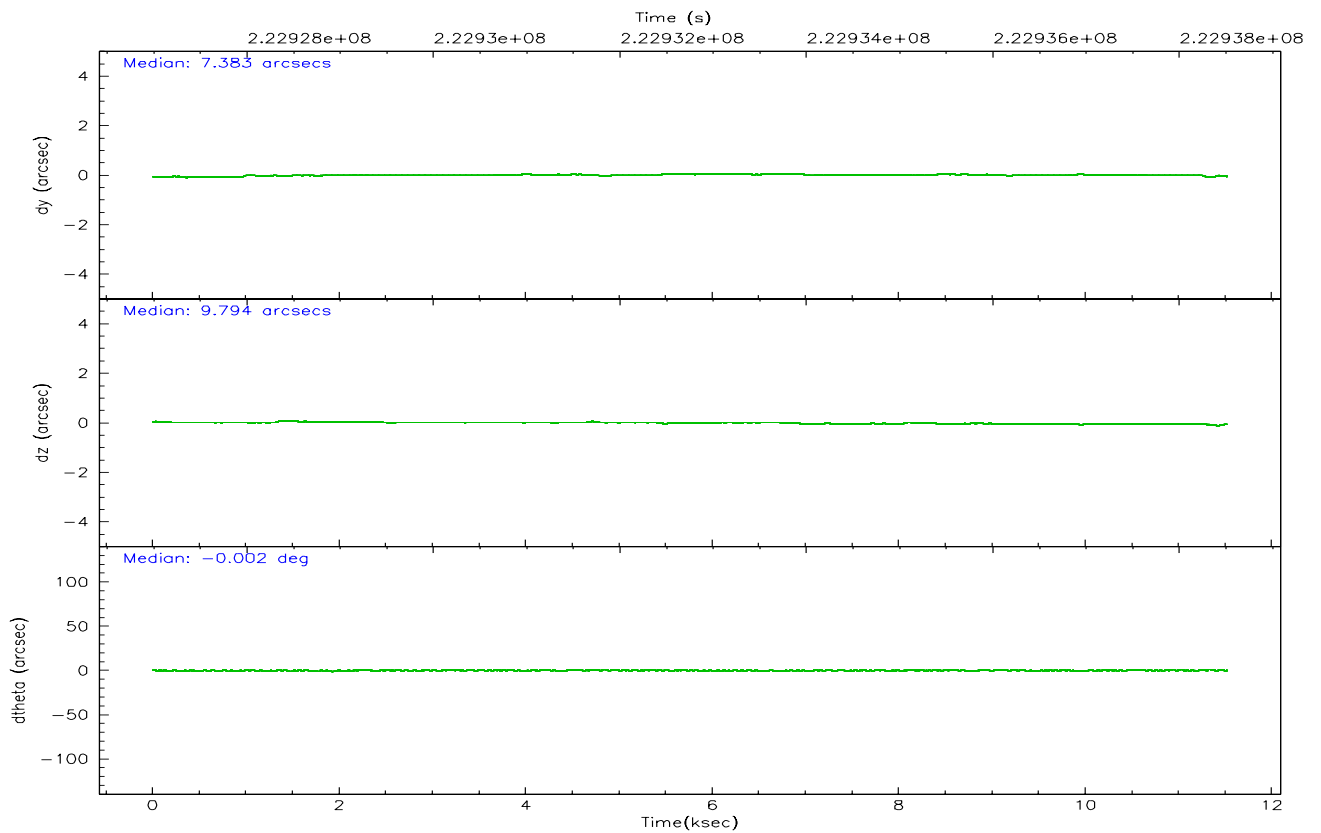
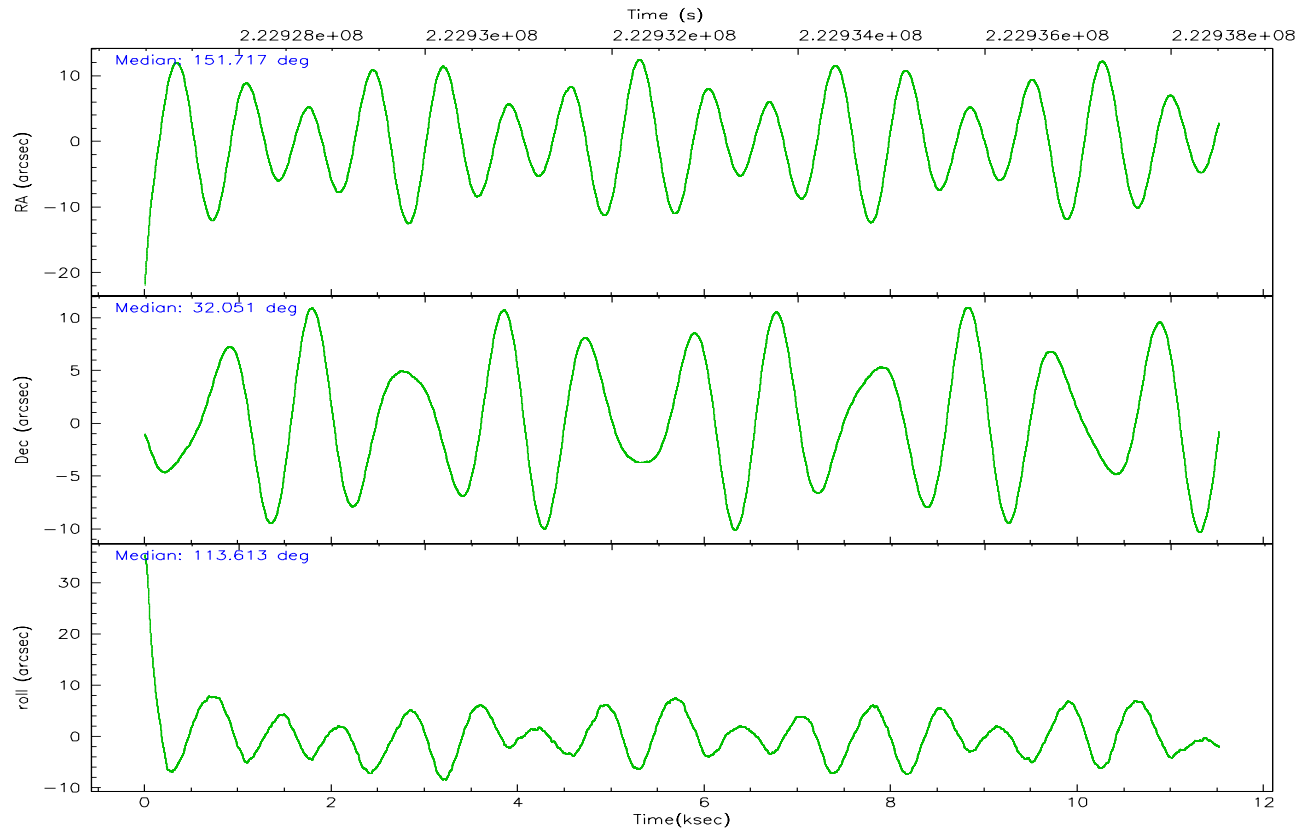
	ccd 0	ccd 1	ccd 2	ccd 3	ccd 6
grade 0 events	2511	2824	2907	4256	2488
	3%	4%	4%	6%	3%
grade 1 events	38	29	39	44	34
	0%	0%	0%	0%	0%
grade 2 events	1510	1701	1555	1530	1440
	2%	2%	2%	2%	2%
grade 3 events	751	844	728	792	782
	1%	1%	1%	1%	1%
grade 4 events	706	762	733	789	757
	1%	1%	1%	1%	1%
grade 5 events	2259	2471	2149	2613	2526
	3%	3%	3%	3%	3%
grade 6 events	1325	1498	1268	1310	1431
	2%	2%	1%	1%	2%
grade 7 events	54608	51983	59865	55509	59627
	85%	83%	86%	83%	86%

2.2 Compared Parameters

Parameter	Planned	Actual	Parameter	Planned	Actual
Instrument	ACIS	ACIS	Obspar format version number	6	6
Detector	ACIS-01236	ACIS-01236	Obspar file type	PREDICTED	ACTUAL
Grating	NONE	NONE	Obspar update status	NONE	UPDATED
Data mode	VFAINT	VFAINT	On-chip summing requested	N	N
Observation mode	POINTING	POINTING	Subarray requested	NONE	NONE
Pointing RA	151.743006	151.7169057515194	Alternating exposures requested	N	N
Pointing Dec	32.035282	32.05135949728206	Primary exposure time	0.000000	3.1
Pointing Roll	113.393033	113.6155902485684			
SIM focus pos (mm)	-0.782348	-0.7809083437167272			
SIM defocus (mm)	0	0.001439871863259334			
SIM translation stage pos (mm)	-229.442463	-229.4438428438578			
SIM translation stage offset (mm)	-4.15	-4.148610159071865			
Observation start time	222927516.184000	222926419.67725			
Observation start date	2005-01-24T04:17:32	2005-01-24T04:00:19			
Observation end time	222938516.184000	222939732.89035			
Observation end date	2005-01-24T07:20:52	2005-01-24T07:42:12			
Read mode	TIMED	TIMED			

2.3 Aspect



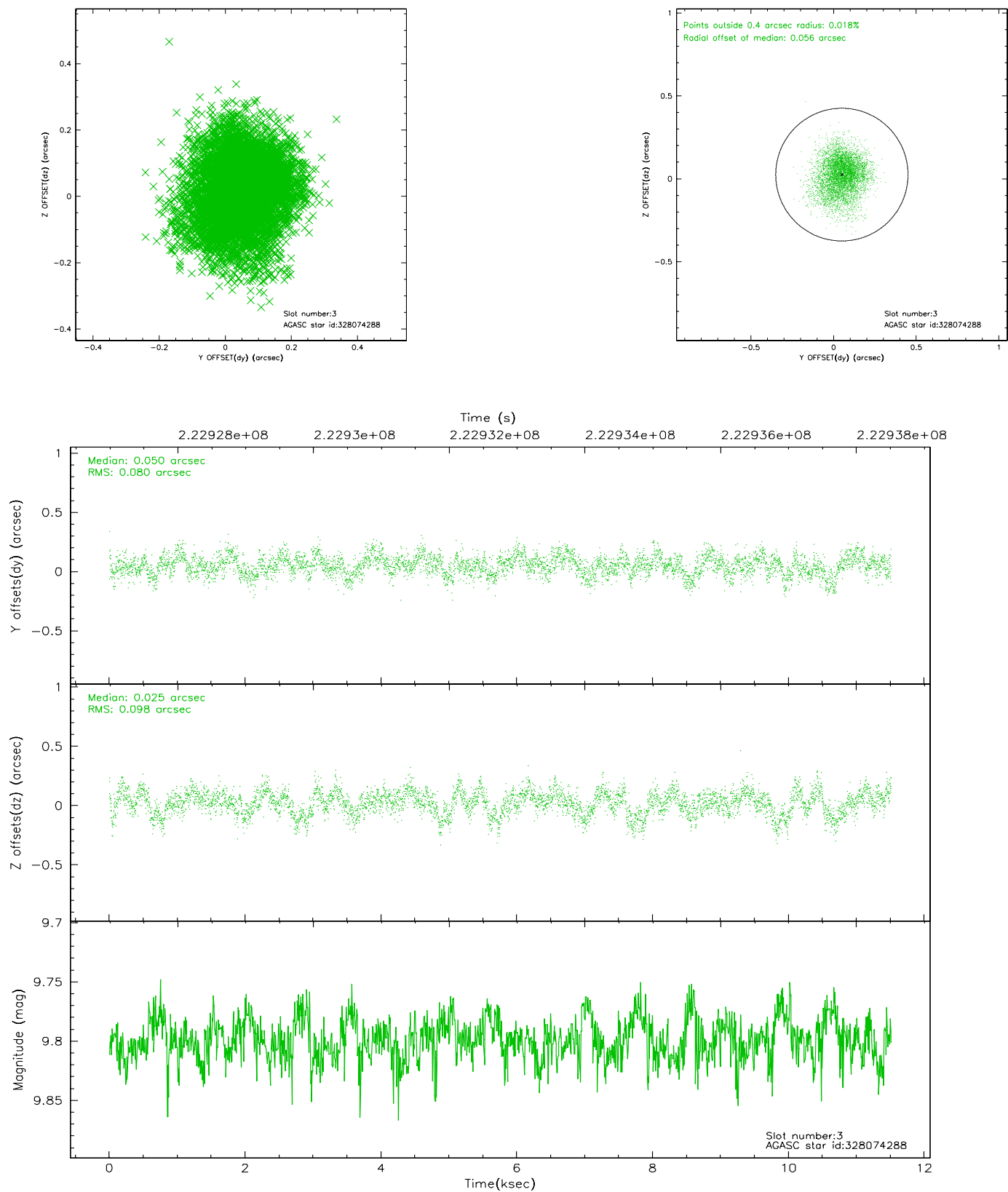


Slot Statistics

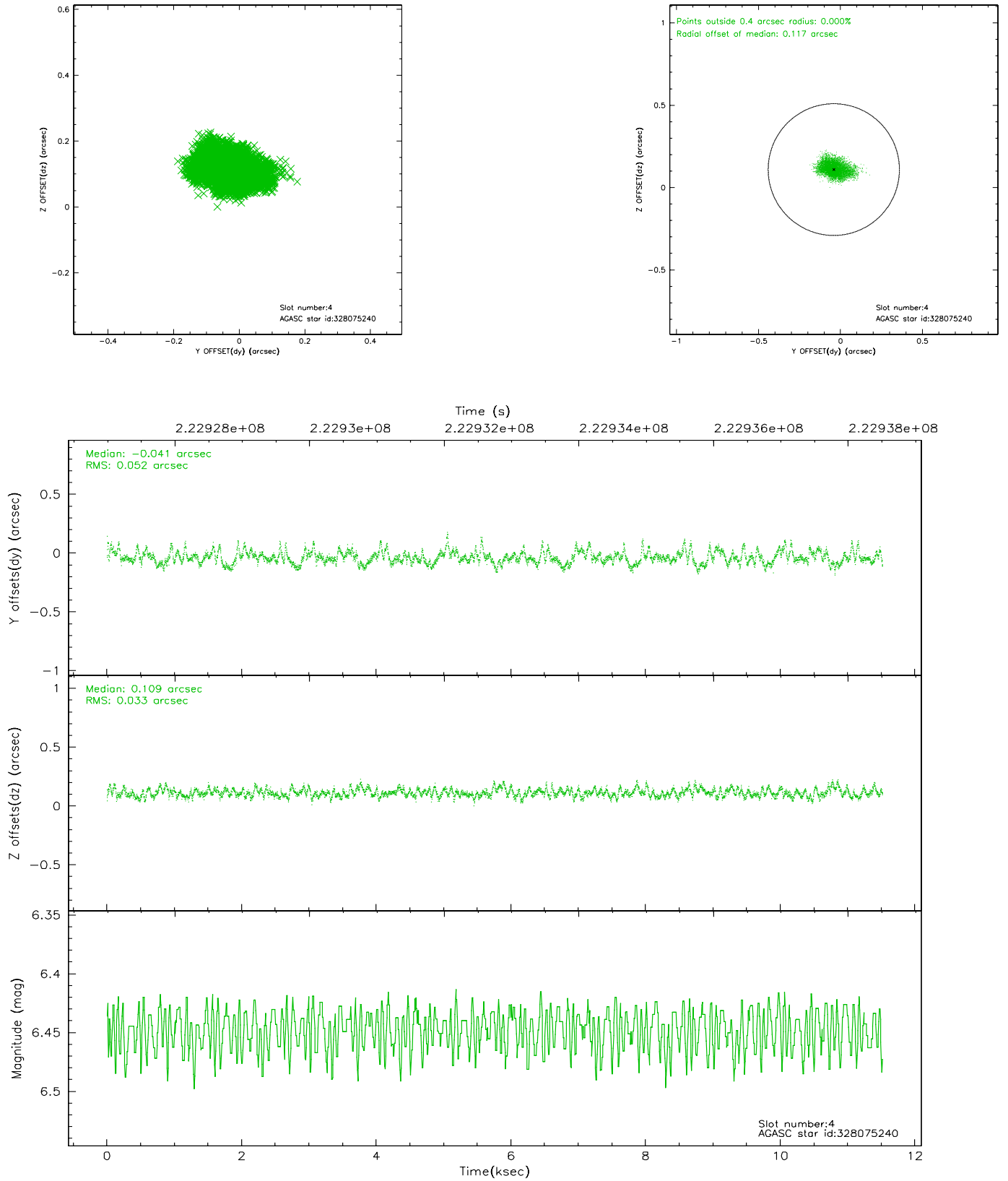
slot	status	id	mag	n_pts	med_dy	med_dz	dr1	dr2	ra	dec	mean_y	mean_z
0	FID	ACIS-I-1	7.25	2810	0.035	0.010	0.006	0.011	0.000000	0.000000	932.24	-918.36
1	FID	ACIS-I-5	7.23	2810	-0.155	0.060	0.006	0.010	0.000000	0.000000	-1815.80	978.94
2	FID	ACIS-I-6	7.25	2810	0.028	0.001	0.007	0.011	0.000000	0.000000	397.31	1623.88
3	GUIDE	328074288	9.80	5606	0.050	0.025	0.135	0.220	151.851051	32.207832	440.00	-548.50
4	GUIDE	328075240	6.45	5620	-0.041	0.109	0.066	0.110	152.066191	31.604067	-1816.63	-293.16
5	GUIDE	328075864	7.18	5620	-0.250	-0.086	0.061	0.101	151.066991	32.452445	2199.34	1286.22
6	GUIDE	328077552	9.54	5612	0.113	-0.129	0.103	0.177	151.705157	31.641393	-1254.29	669.71
7	GUIDE	328083000	9.64	5609	0.129	0.072	0.141	0.218	152.384129	31.587113	-2255.82	-1165.93

2.4 Star Slots

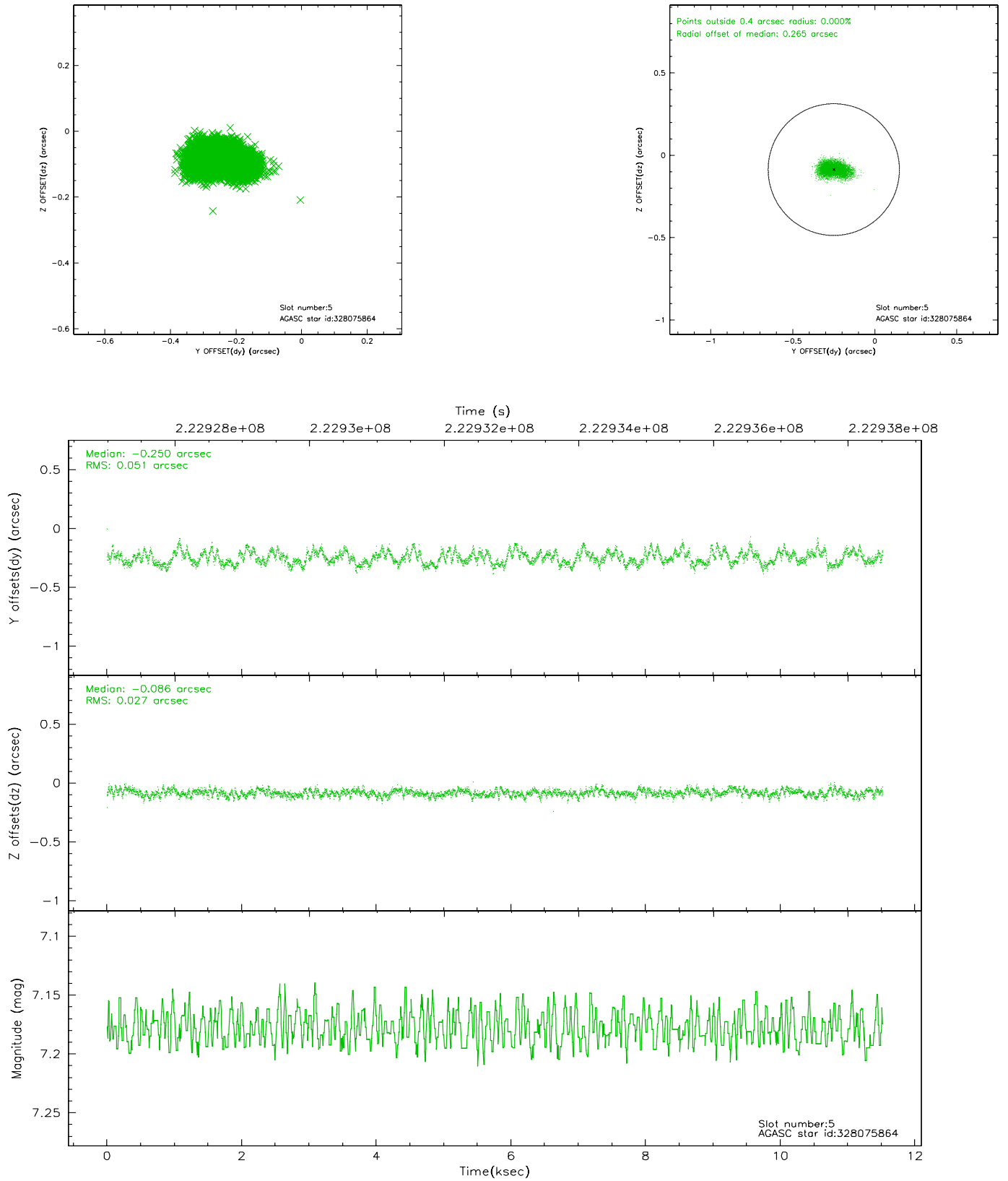
2.4.1 Slot 3



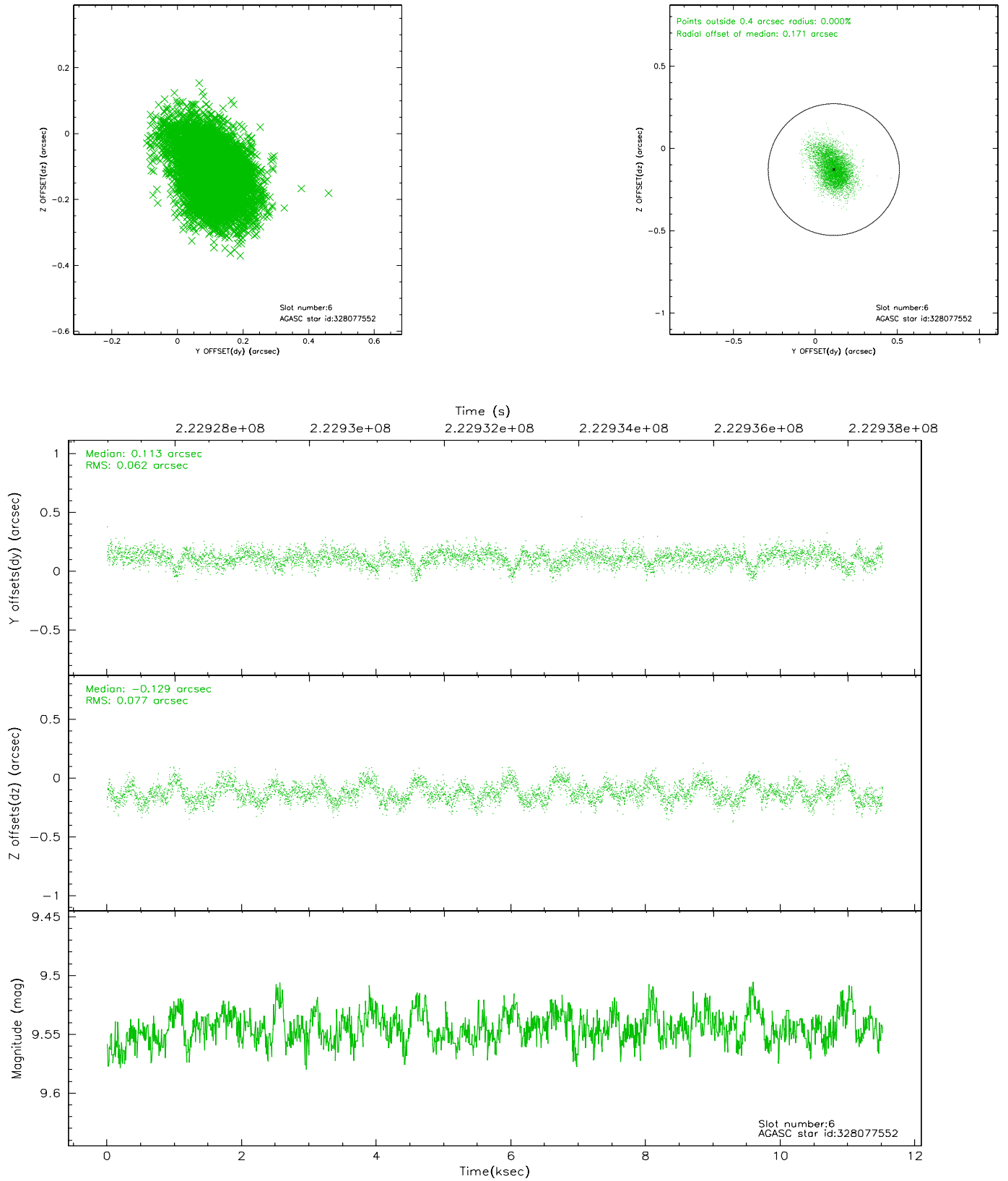
2.4.2 Slot 4



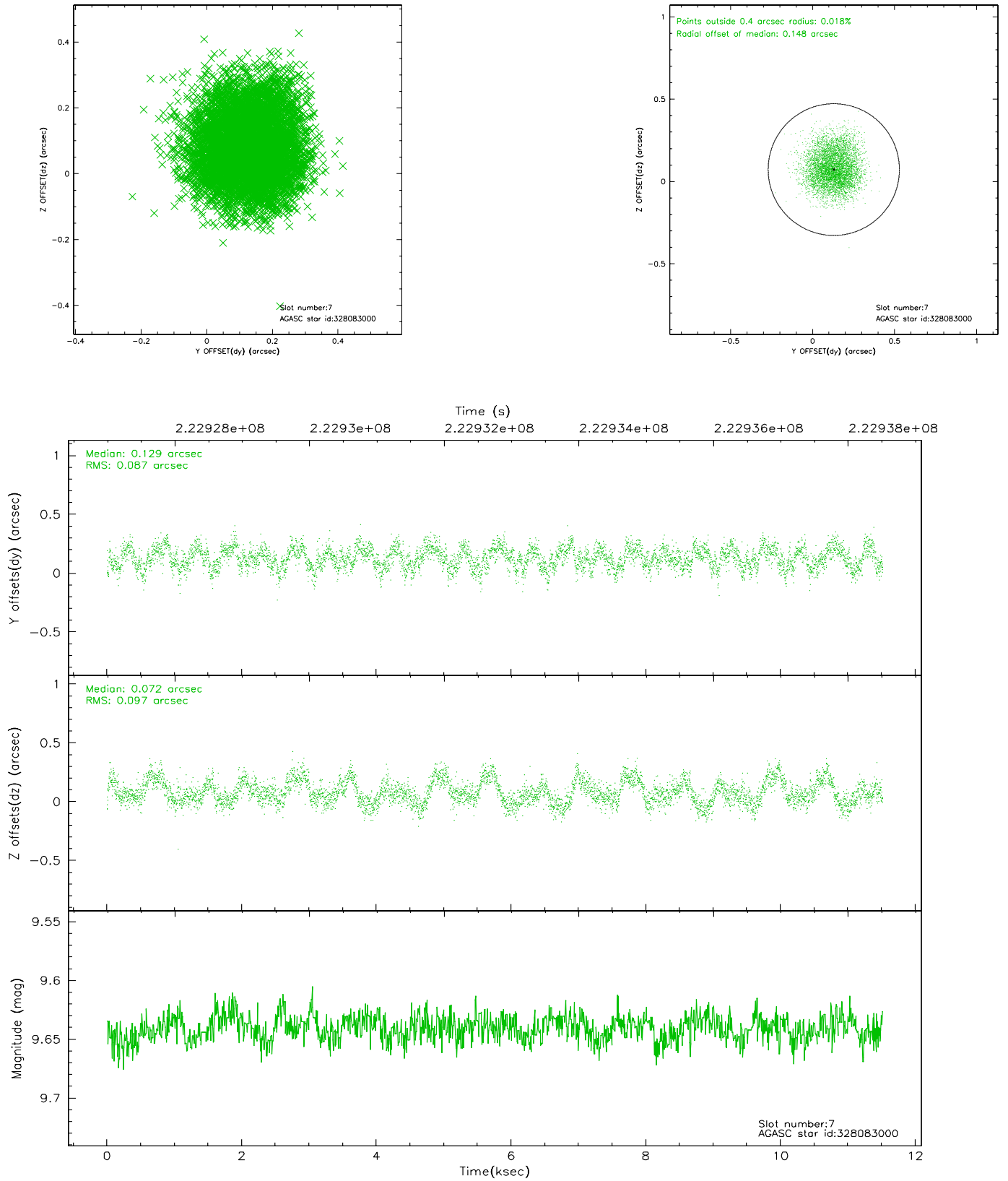
2.4.3 Slot 5



2.4.4 Slot 6

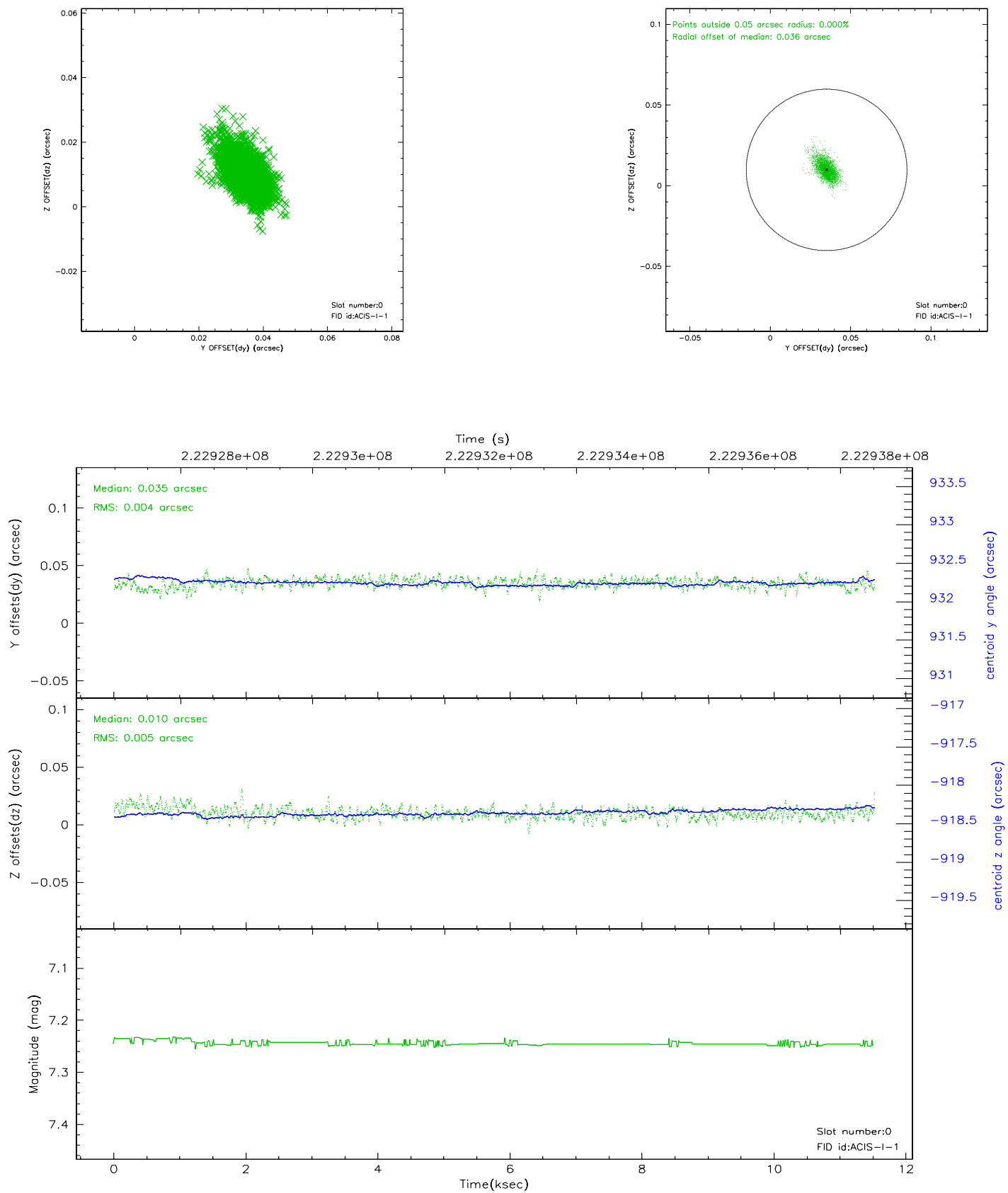


2.4.5 Slot 7

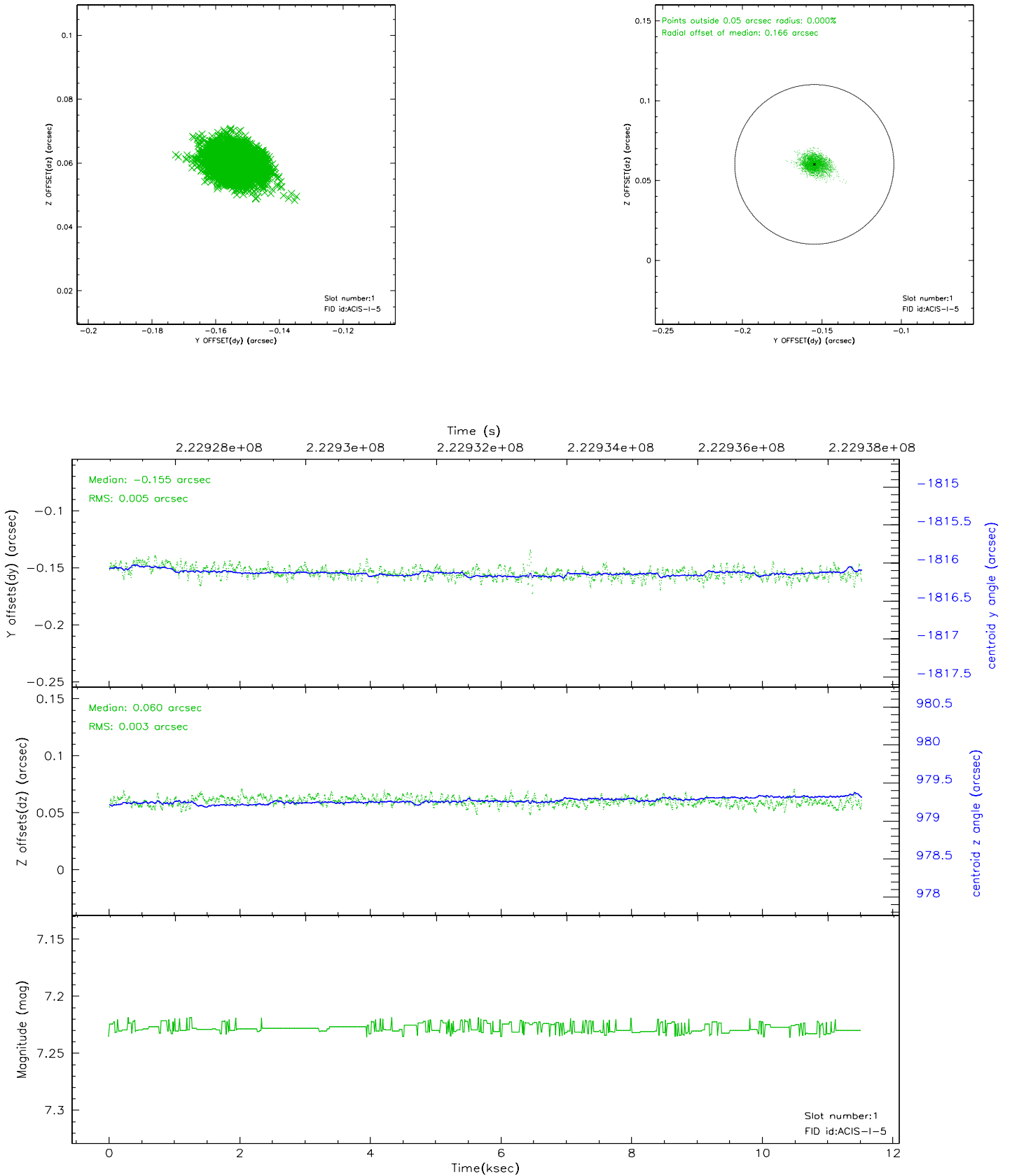


2.5 FID Slots

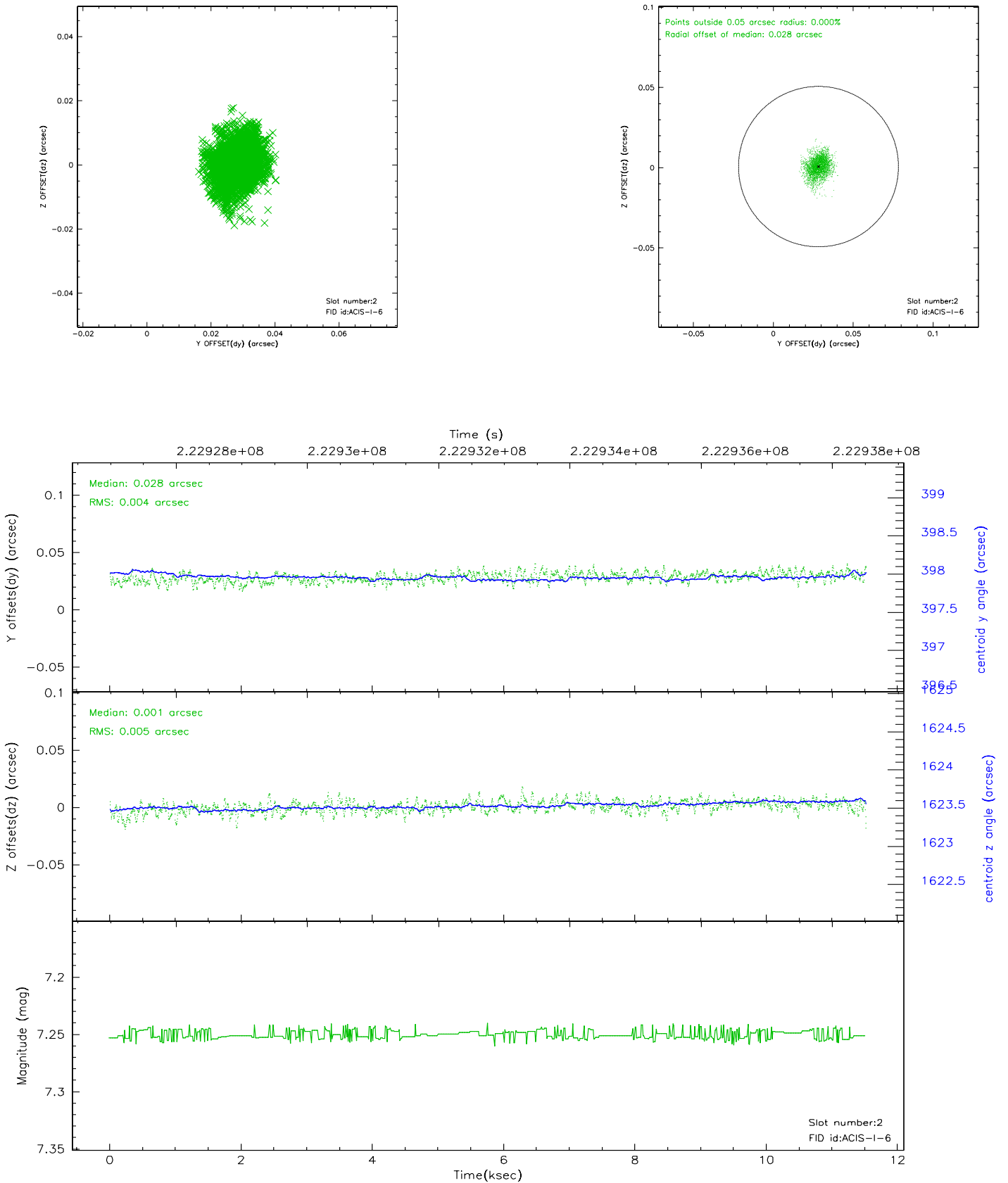
2.5.1 Slot 0



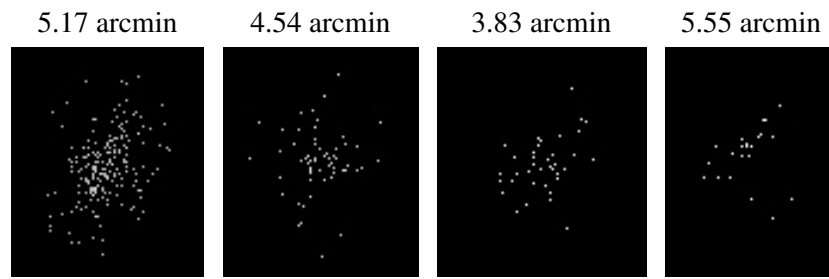
2.5.2 Slot 1



2.5.3 Slot 2



3 Point Sources



A Summary

A.1 Status

V&V Scientist	Jen Lauer
V&V Date (YYYY-MM-DD)	2006.02.19
V&V Edition	1
V&V Disposition and Status	OK
V&V Charge Time	11.03285

A.2 Comments