

# V&V Reference Report

## L2 ASCDS Version : 7.6.8.1

Observation 5814 - L2 Version 003  
Chandra X-Ray Center

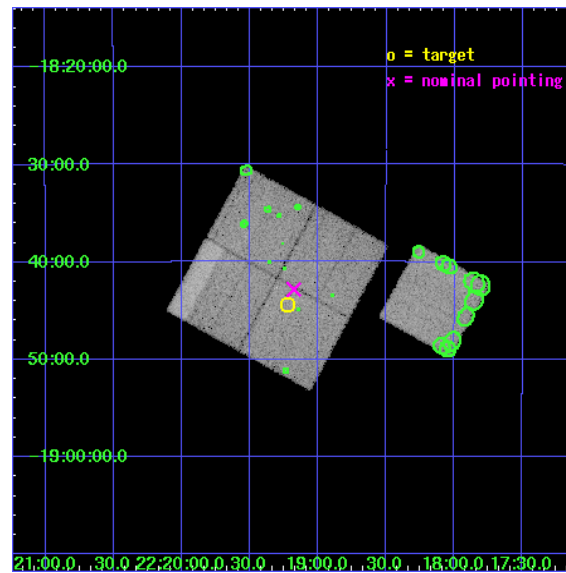
L2 Processing Date : Aug 8 2006

## Contents

<b>1</b>	<b>Front</b>	<b>2</b>
<b>2</b>	<b>OBI</b>	<b>3</b>
2.1	OBI . . . . .	3
2.1.1	Images . . . . .	3
2.1.2	Bias . . . . .	3
2.1.3	Parameters . . . . .	4
2.1.4	Events . . . . .	4
2.2	Compared Parameters . . . . .	5
2.3	Aspect . . . . .	6
2.4	Star Slots . . . . .	9
2.4.1	Slot 3 . . . . .	9
2.4.2	Slot 4 . . . . .	10
2.4.3	Slot 5 . . . . .	11
2.4.4	Slot 6 . . . . .	12
2.4.5	Slot 7 . . . . .	13
2.5	FID Slots . . . . .	14
2.5.1	Slot 0 . . . . .	14
2.5.2	Slot 1 . . . . .	15
2.5.3	Slot 2 . . . . .	16
<b>3</b>	<b>Point Sources</b>	<b>17</b>
<b>A</b>	<b>Summary</b>	<b>18</b>
A.1	Status . . . . .	18
A.2	Comments . . . . .	18

# 1 Front

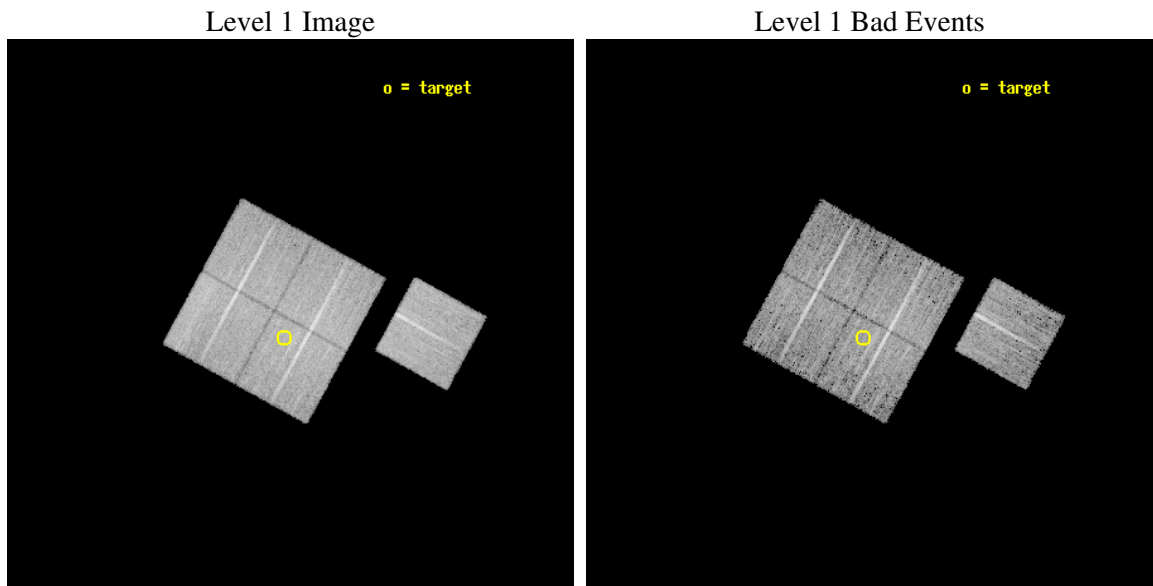
seq_num	800527
obs_id	5814
title	MACS: The most massive galaxy clusters at $z>0.3$
observer	Dr Harald Ebeling
object	MACSJ2219.1-1844
dtcycle	0
cycle	P
ra_targ	334.806833
dec_targ	-18.739
ra_nom	334.79458145552
dec_nom	-18.713885659456
roll_nom	118.78668629154
revision	3
ontime	8571.459023267
livetime	8459.4666009117
ontime0	8571.459023267
ontime1	8574.5999835134
ontime2	8571.4589933455
ontime3	8571.459023267
ontime6	8571.4589933753
l2events	154951



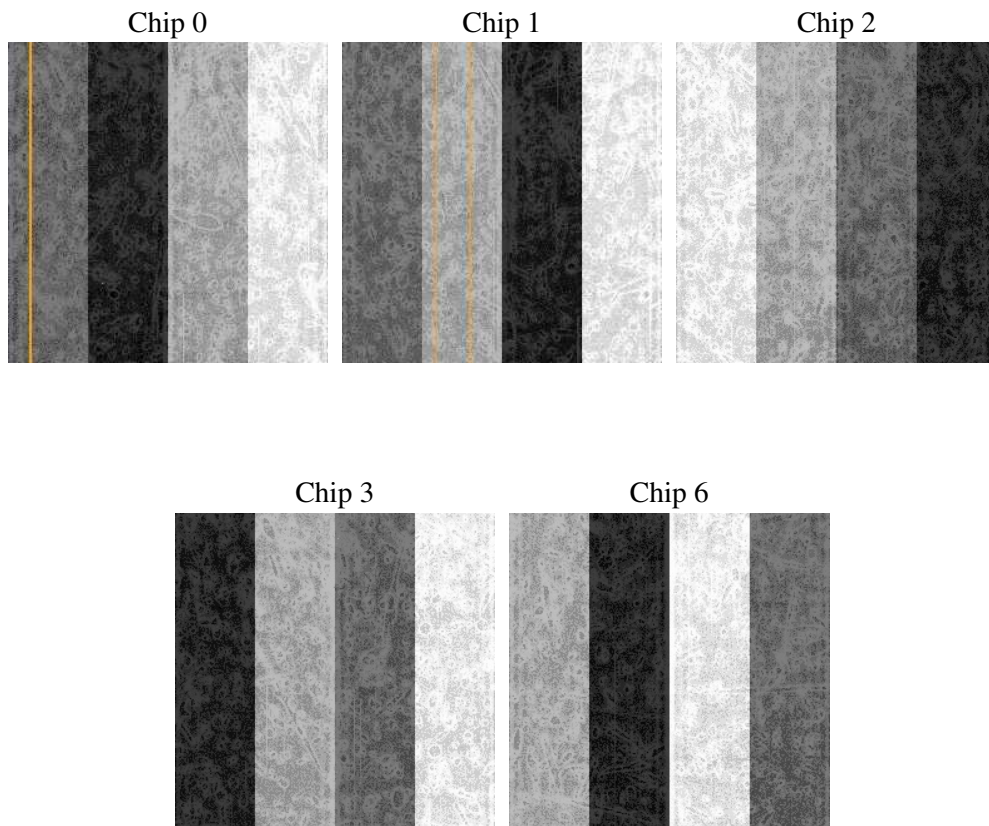
## 2 OBI

### 2.1 OBI

#### 2.1.1 Images



#### 2.1.2 Bias



### 2.1.3 Parameters

obi_num	0
ascdsver	7.6.8.1
caldsver	3.2.2
date	2006-08-08T16:47:52
revision	3

sched_exp_time	10900.345000
ontime	8618.9071315527
ontime0	8618.9071315527
ontime1	8622.048111707
ontime2	8618.9071215391
ontime3	8618.9071315527
ontime6	8618.907101661
l1events	426107

### 2.1.4 Events

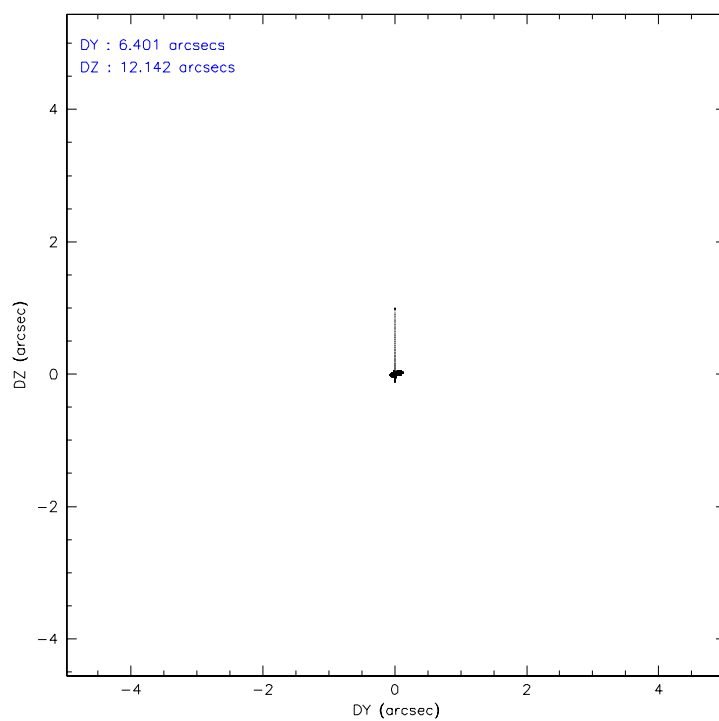
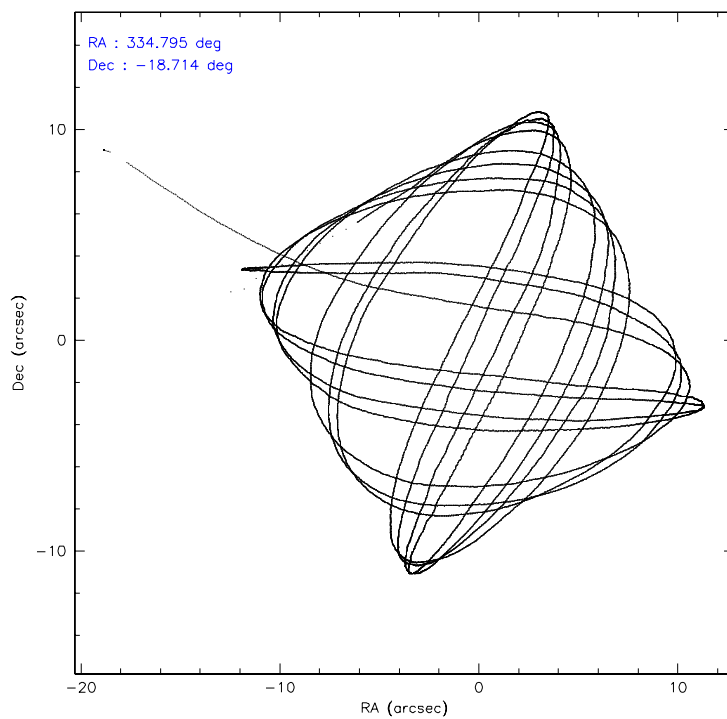
	ccd 0	ccd 1	ccd 2	ccd 3	ccd 6
level 1 events	79772	88836	86345	84508	86646
rejected events	48204	49974	55937	53105	51952
rejected %	60%	56%	64%	62%	59%

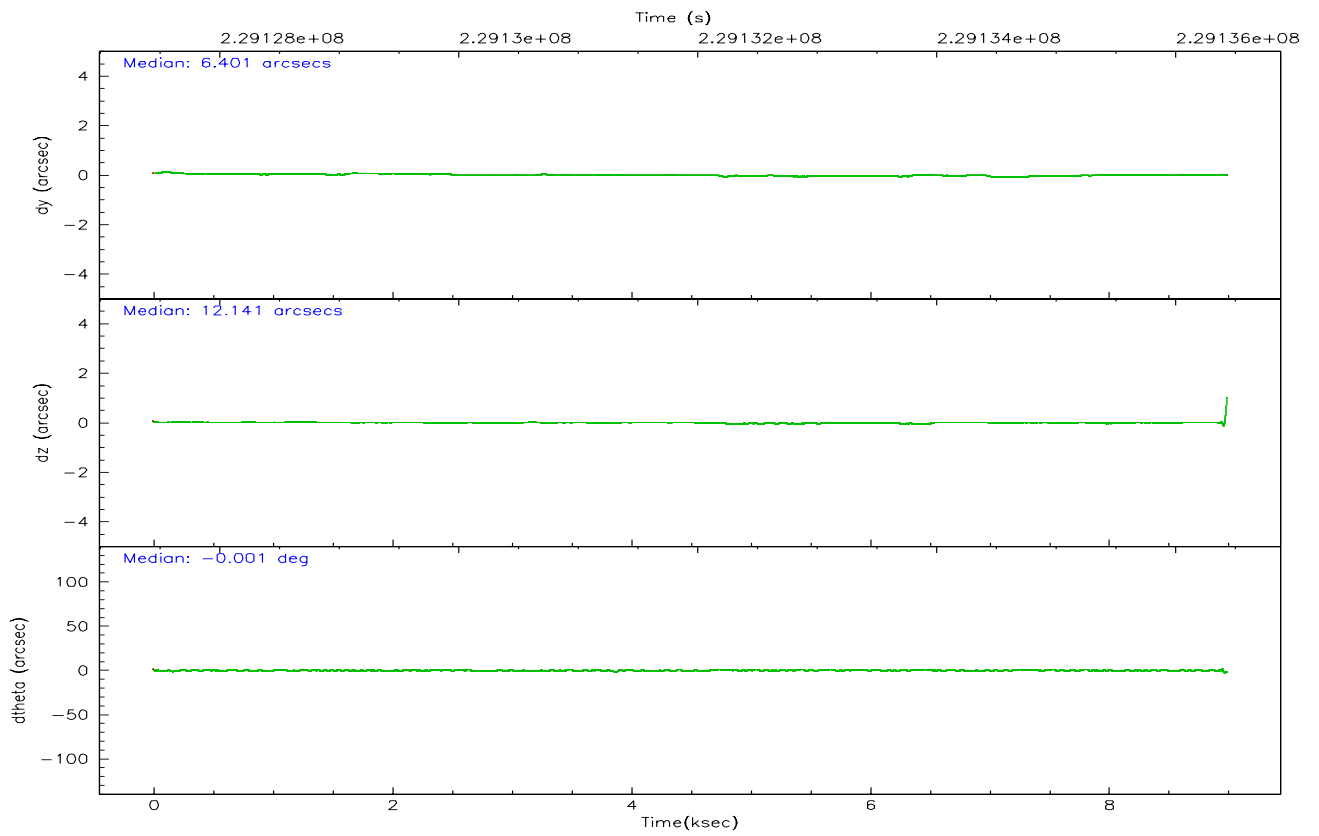
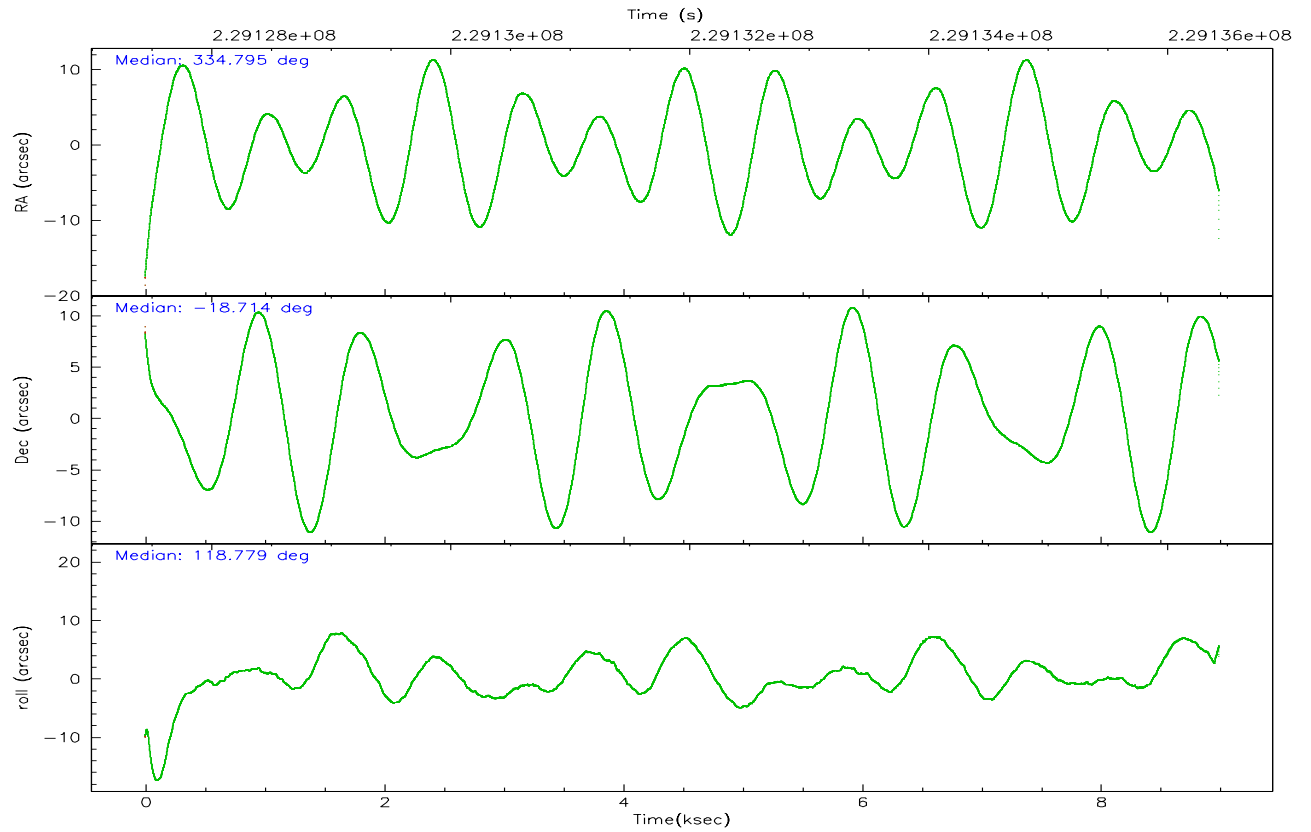
	ccd 0	ccd 1	ccd 2	ccd 3	ccd 6
grade 0 events	17680	23238	17383	18139	19677
	22%	26%	20%	21%	22%
grade 1 events	98	135	128	122	118
	0%	0%	0%	0%	0%
grade 2 events	5055	6413	4658	4727	5112
	6%	7%	5%	5%	5%
grade 3 events	2072	2122	1959	1975	2002
	2%	2%	2%	2%	2%
grade 4 events	1945	2099	1979	2018	2108
	2%	2%	2%	2%	2%
grade 5 events	1999	2182	2035	2263	2369
	2%	2%	2%	2%	2%
grade 6 events	5089	5277	4650	4777	6043
	6%	5%	5%	5%	6%
grade 7 events	45834	47370	53553	50487	49217
	57%	53%	62%	59%	56%

## 2.2 Compared Parameters

Parameter	Planned	Actual	Parameter	Planned	Actual
Instrument	ACIS	ACIS	Obspar format version number	6	6
Detector	ACIS-01236	ACIS-01236	Obspar file type	PREDICTED	ACTUAL
Grating	NONE	NONE	Obspar update status	NONE	UPDATED
Data mode	VFAINT	VFAINT	On-chip summing requested	N	N
Observation mode	POINTING	POINTING	Subarray requested	NONE	NONE
Pointing RA	334.819344	334.7945814555163	Alternating exposures requested	N	N
Pointing Dec	-18.727989	-18.71388565945607	Primary exposure time	0.000000	3.1
Pointing Roll	118.585928	118.7866862915381			
SIM focus pos (mm)	-0.782348	-0.7809083437167272			
SIM defocus (mm)	0	0.001439871863259334			
SIM translation stage pos (mm)	-229.442463	-229.4438428438578			
SIM translation stage offset (mm)	-4.15	-4.148610159071865			
Observation start time	229127598.184000	229127320.94565			
Observation start date	2005-04-05T22:32:14	2005-04-05T22:28:40			
Observation end time	229138499.184000	229136441.39606			
Observation end date	2005-04-06T01:33:55	2005-04-06T01:00:41			
Read mode	TIMED	TIMED			

## 2.3 Aspect





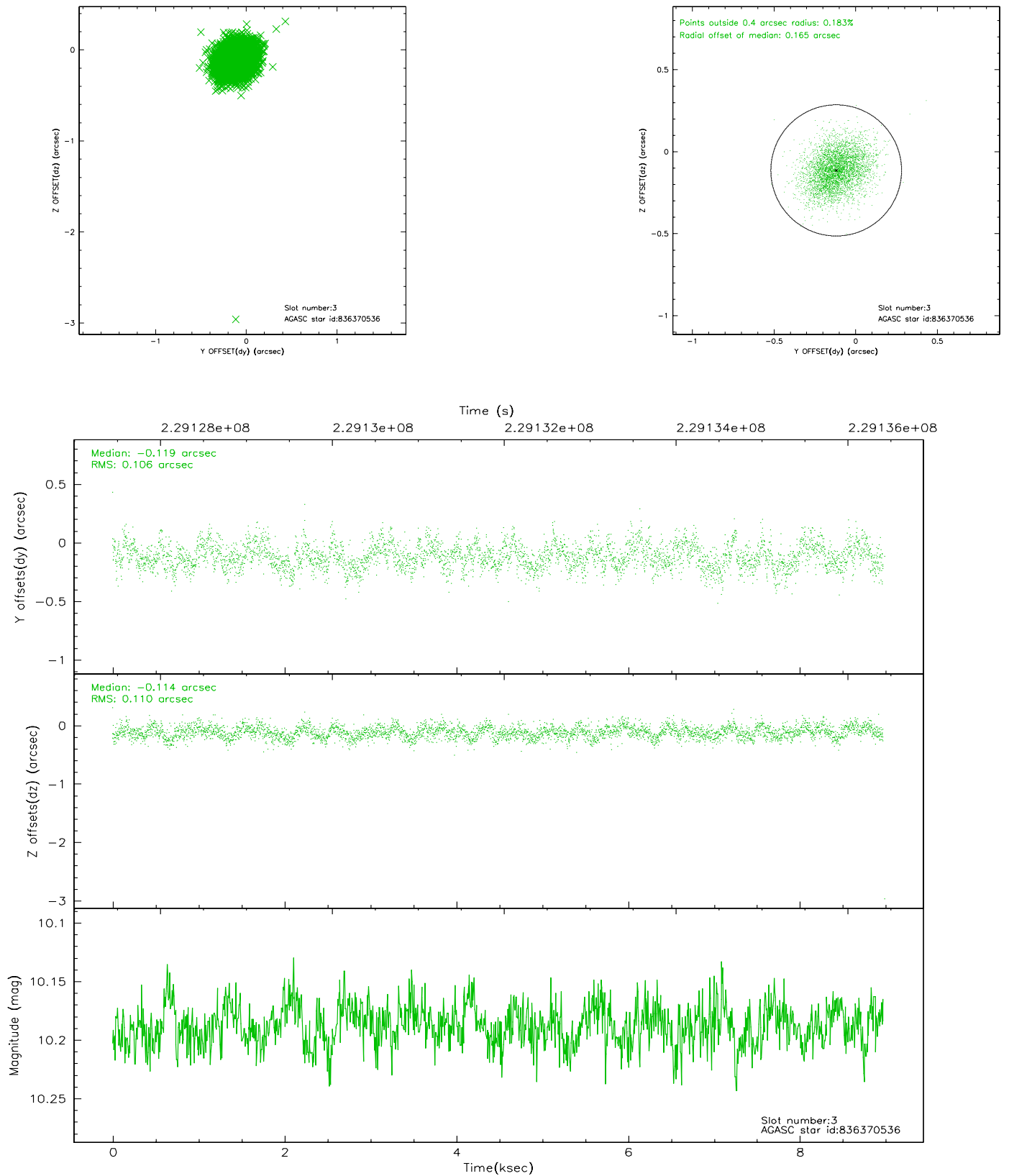
### Slot Statistics

slot	status	id	mag	n_pts	med_dy	med_dz	dr1	dr2	ra	dec	mean_y	mean_z
0	FID	ACIS-I-1	7.24	2193	0.049	0.026	0.006	0.010	0.000000	0.000000	933.25	-920.78
1	FID	ACIS-I-5	7.22	2192	-0.163	0.078	0.006	0.010	0.000000	0.000000	-1814.70	976.46
2	FID	ACIS-I-6	7.25	2193	0.022	-0.033	0.006	0.010	0.000000	0.000000	398.15	1621.51
3	GUIDE	836370536	10.19	4367	-0.119	-0.114	0.156	0.253	333.932921	-18.493199	2183.55	2257.26
4	GUIDE	836372744	10.91	4369	-0.097	-0.204	0.292	0.462	334.489408	-18.590277	973.62	752.74
5	GUIDE	836372896	9.78	4374	0.226	-0.159	0.159	0.241	334.569486	-19.201028	-1089.16	1561.54
6	GUIDE	836381144	9.80	4372	-0.039	0.232	0.209	0.302	334.947885	-18.243865	1320.08	-1218.58
7	GUIDE	836382088	7.81	4376	0.029	0.241	0.083	0.129	335.350410	-18.505750	-166.52	-1973.36

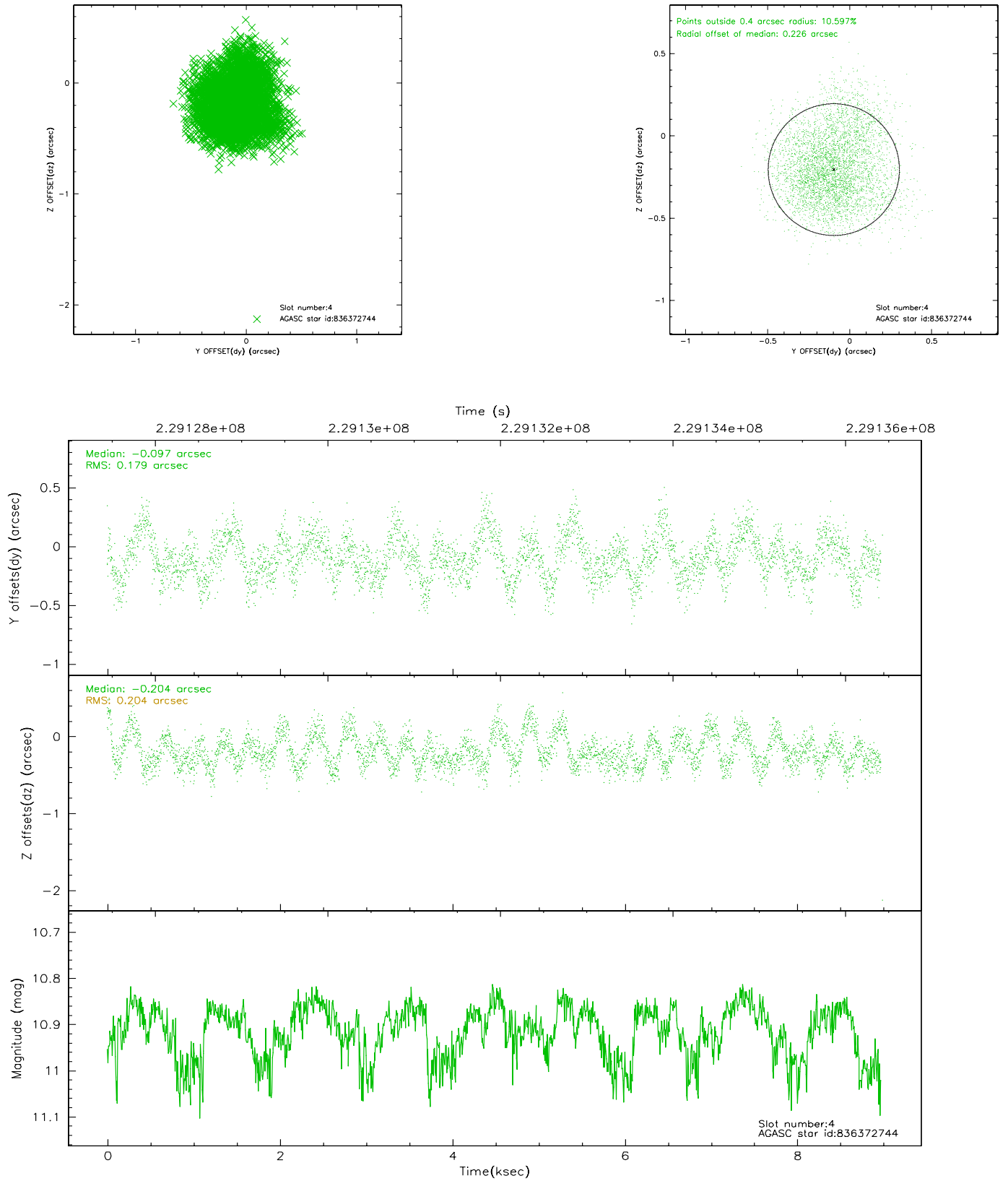


## 2.4 Star Slots

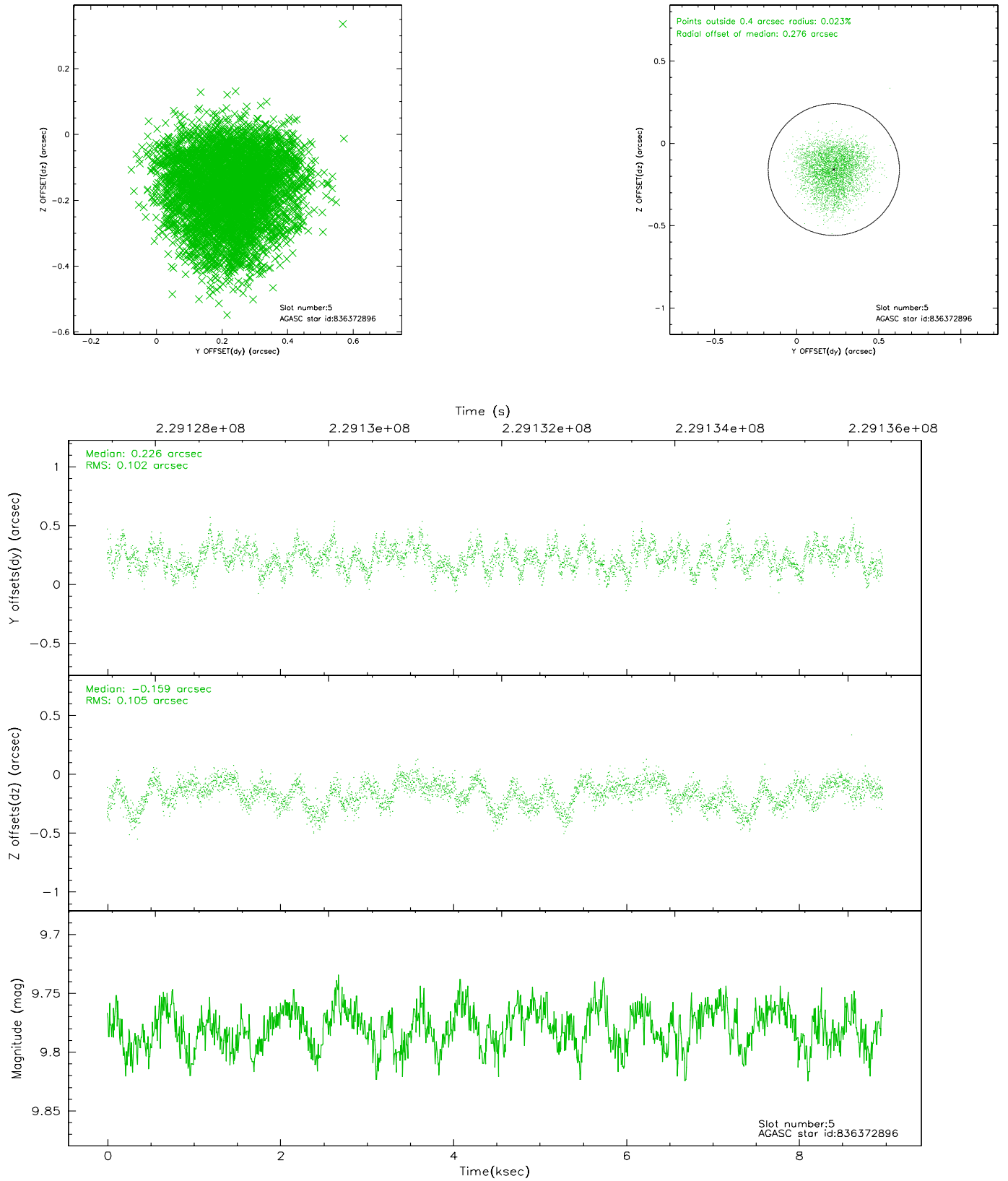
### 2.4.1 Slot 3



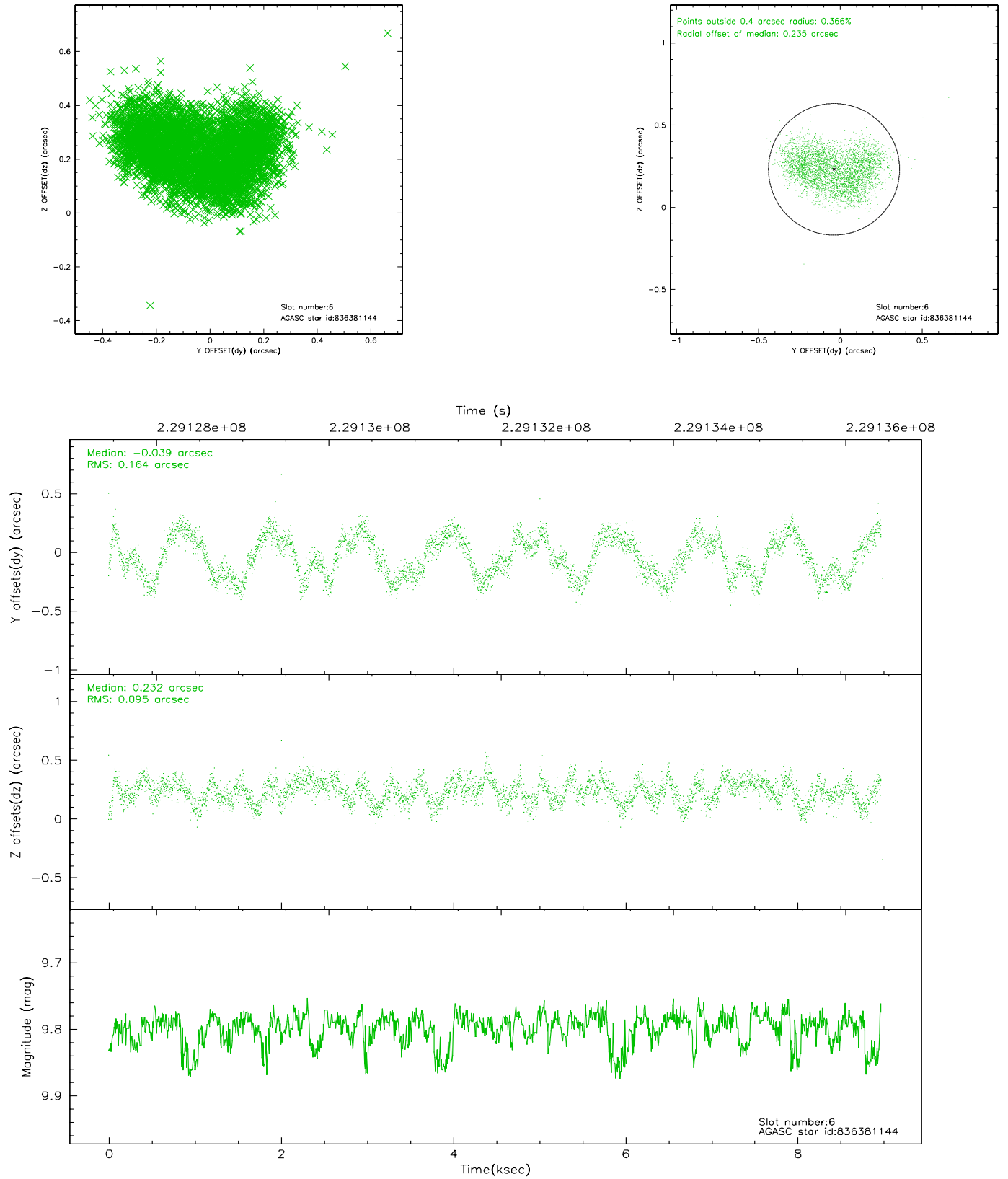
## 2.4.2 Slot 4



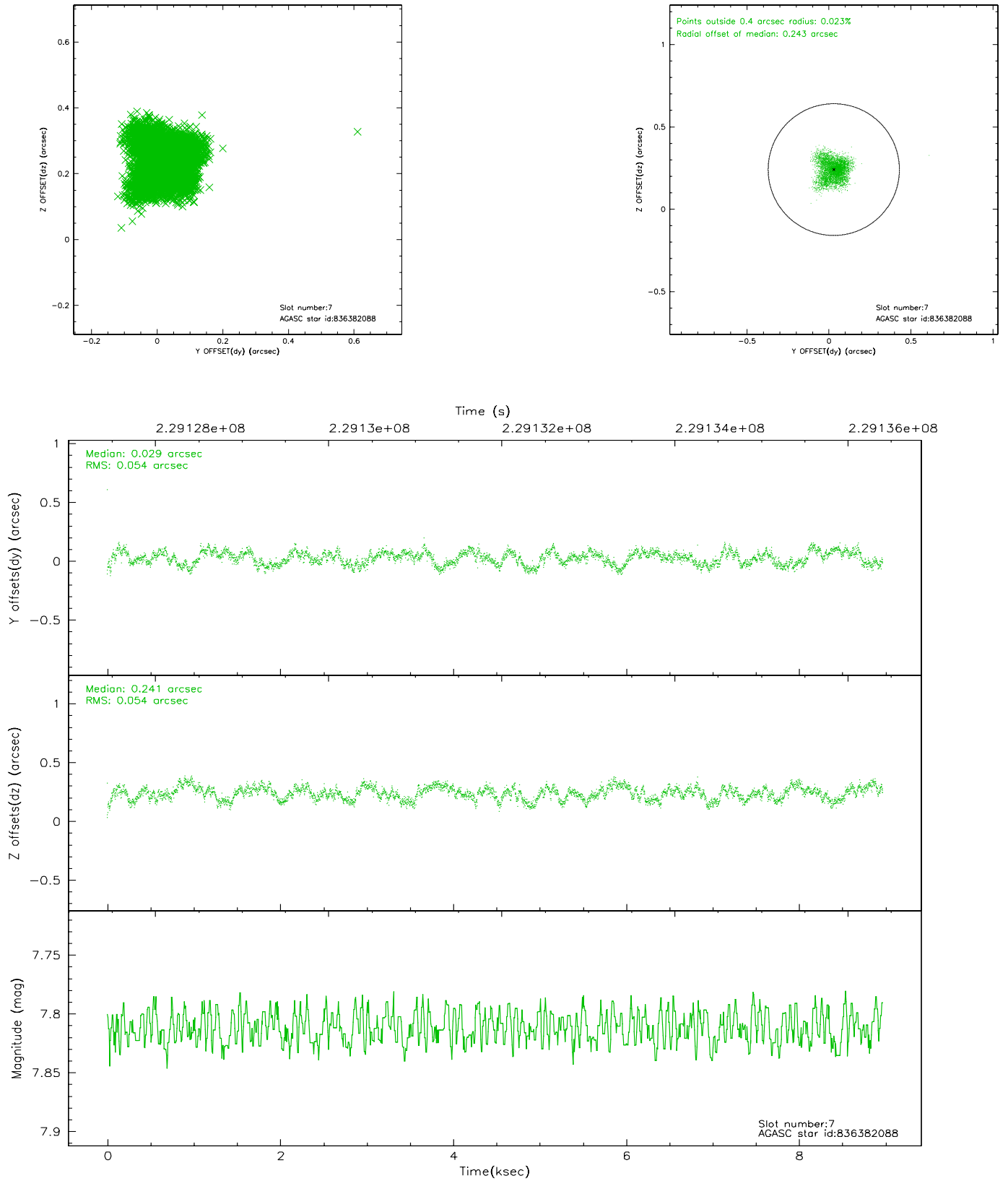
### 2.4.3 Slot 5



## 2.4.4 Slot 6

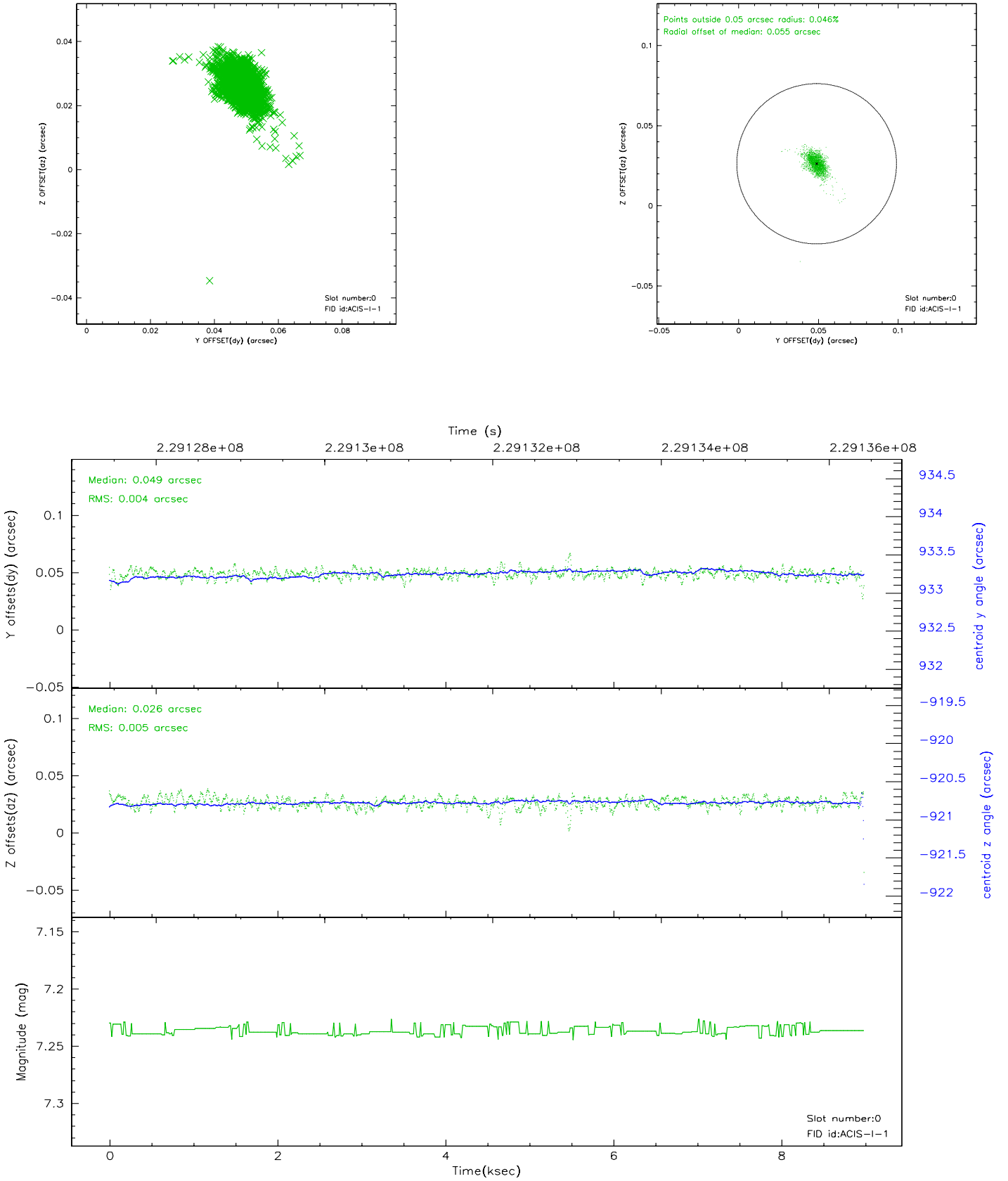


## 2.4.5 Slot 7

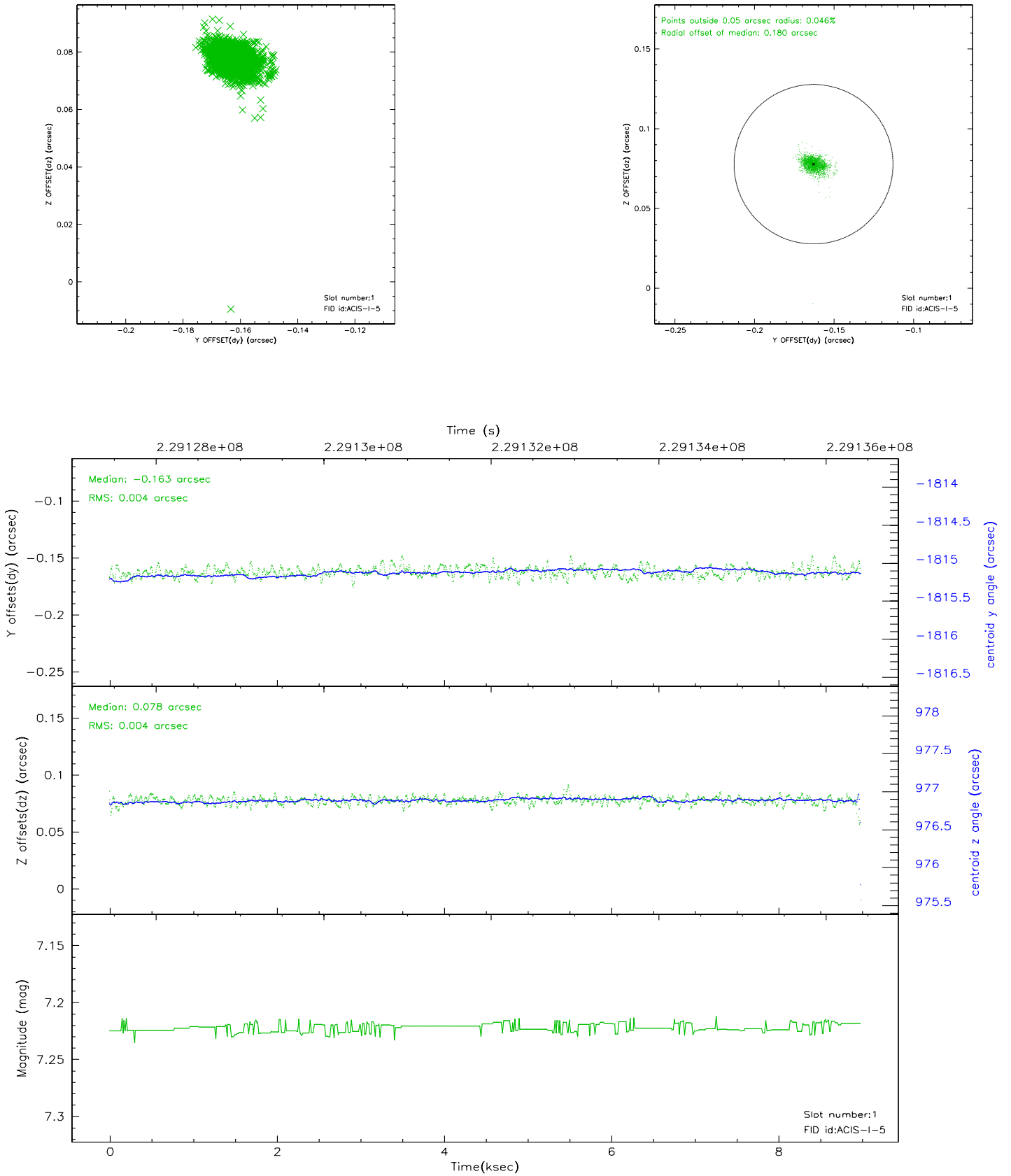


## 2.5 FID Slots

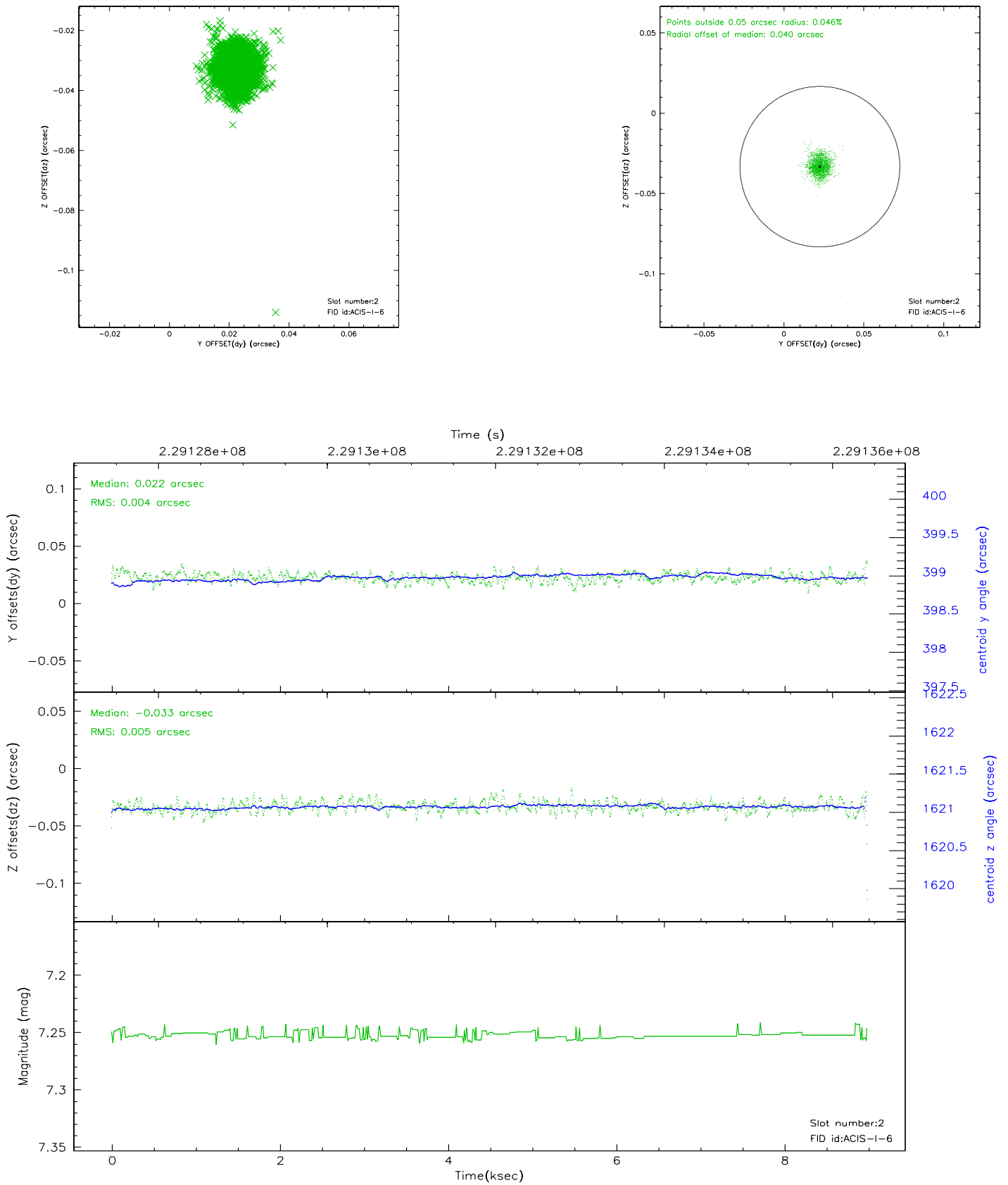
### 2.5.1 Slot 0



## 2.5.2 Slot 1

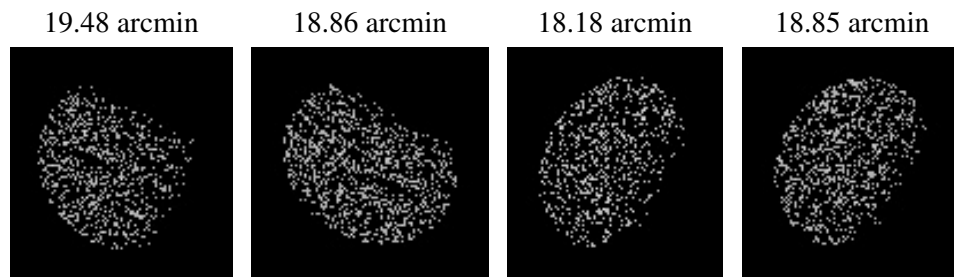


### 2.5.3 Slot 2





### 3 Point Sources



# A Summary

## A.1 Status

V&V Scientist	Beth Sundheim
V&V Date (YYYY-MM-DD)	2006.08.10
V&V Edition	1
V&V Disposition and Status	OK
V&V Charge Time	8.571

## A.2 Comments

This observation was interrupted by safing of the science instruments onboard Chandra due to high solar radiation environment. The observation was interrupted at 2005:096:00:59. In this version of the software, a few seconds of data are inadvertently included at the end of the observation after the spacecraft and its components began to move. Therefore, the aspect solution is not entirely correct. Software will be modified to correct this situation as soon as feasible. The aspect solution can be corrected in CIAO by removing data from the end of the \*asol.fits file that has a timestamp equal to or later than the above interruption time. The Level 1 event file can be recreated using CIAO and the edited \*asol.fits file.