

V&V Reference Report

L2 ASCDS Version : 8.5.1.1

Observation 5811 - L2 Version 3
Chandra X-Ray Center

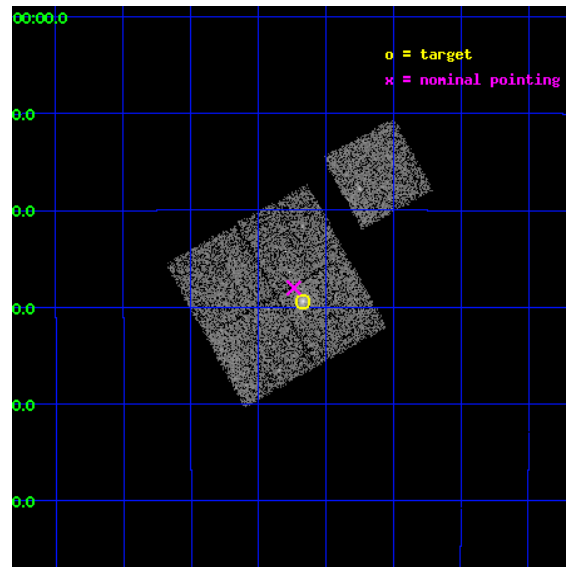
L2 Processing Date : Dec 20 2012

Contents

1	Front	2
2	OBI	3
2.1	OBI	3
2.1.1	Images	3
2.1.2	Bias	3
2.1.3	Parameters	4
2.1.4	Events	4
2.2	Compared Parameters	5
2.3	Aspect	6
2.4	Star Slots	9
2.4.1	Slot 3	9
2.4.2	Slot 4	10
2.4.3	Slot 5	11
2.4.4	Slot 6	12
2.4.5	Slot 7	13
2.5	FID Slots	14
2.5.1	Slot 0	14
2.5.2	Slot 1	15
2.5.3	Slot 2	16
A	Summary	17
A.1	Status	17
A.2	Comments	17

1 Front

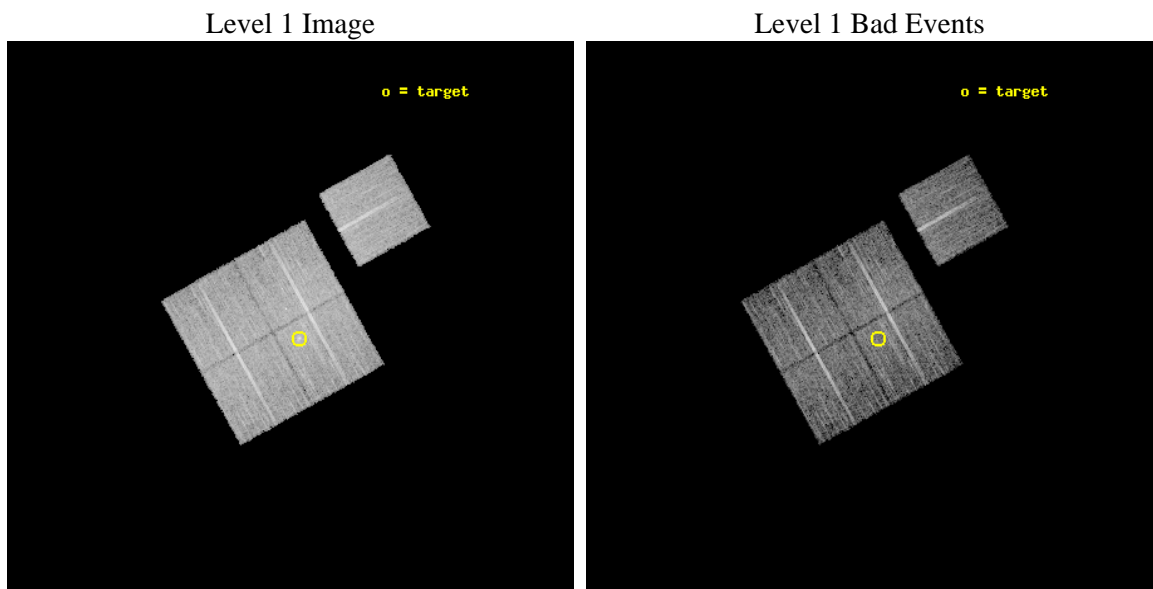
seq_num	800524	Sequence number
obs_id	5811	Observation id
title	MACS: The most massive galaxy clusters at $z>0.3$	Proposal title
observer	Dr. Harald Ebeling	Principal investigator
object	MACSJ1359.1-1929	Source name
dtcycle	0	
cycle	P	events from which exps? Prim/Second/Both
ra_targ	209.793458	Observer's specified target RA [deg]
dec_targ	-19.49025	Observer's specified target Dec [deg]
ra_nom	209.8094597311	Nominal RA [deg]
dec_nom	-19.466990170349	Nominal Dec [deg]
roll_nom	60.86867587647	Nominal Roll [deg]
revision	3	Processing version of data
ontime	10050.199980646	Sum of GTIs [s]
livetime	9918.8867190496	Livetime [s]
ontime0	10047.058980465	Sum of GTIs [s]
ontime1	10050.199980646	Sum of GTIs [s]
ontime2	10040.776970088	Sum of GTIs [s]
ontime3	10050.199980646	Sum of GTIs [s]
ontime6	10047.058990389	Sum of GTIs [s]
l2events	27928	Number of level 2 events



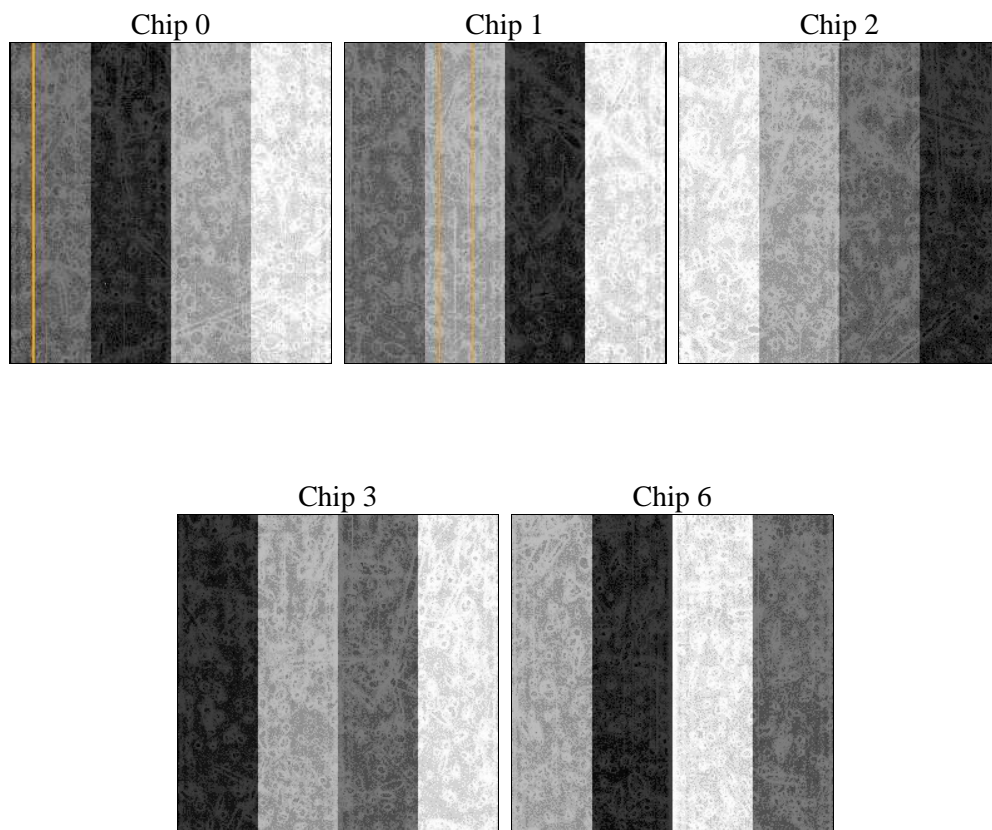
2 OBI

2.1 OBI

2.1.1 Images



2.1.2 Bias



2.1.3 Parameters

obi_num	0	Obi number	sched_exp_time	10000.000000	[s] Scheduled observation exposure time
ascdsver	8.5.1.1	Processing system revision	ontime	10050.199980646	Sum of GTIs [s]
caldsver	4.5.5	 	ontime0	10047.058980465	Sum of GTIs [s]
date	2012-12-20T15:56:37	Date and time of file creation	ontime1	10050.199980646	Sum of GTIs [s]
revision	3	Processing version of data	ontime2	10040.776970088	Sum of GTIs [s]
			ontime3	10050.199980646	Sum of GTIs [s]
			ontime6	10047.058990389	Sum of GTIs [s]
			l1events	309034	Number of level 1 events

2.1.4 Events

	ccd 0	ccd 1	ccd 2	ccd 3	ccd 6
level 1 events	60265	58314	65893	61753	62809
rejected events	53870	51175	59337	54825	56183
rejected %	89%	87%	90%	88%	89%

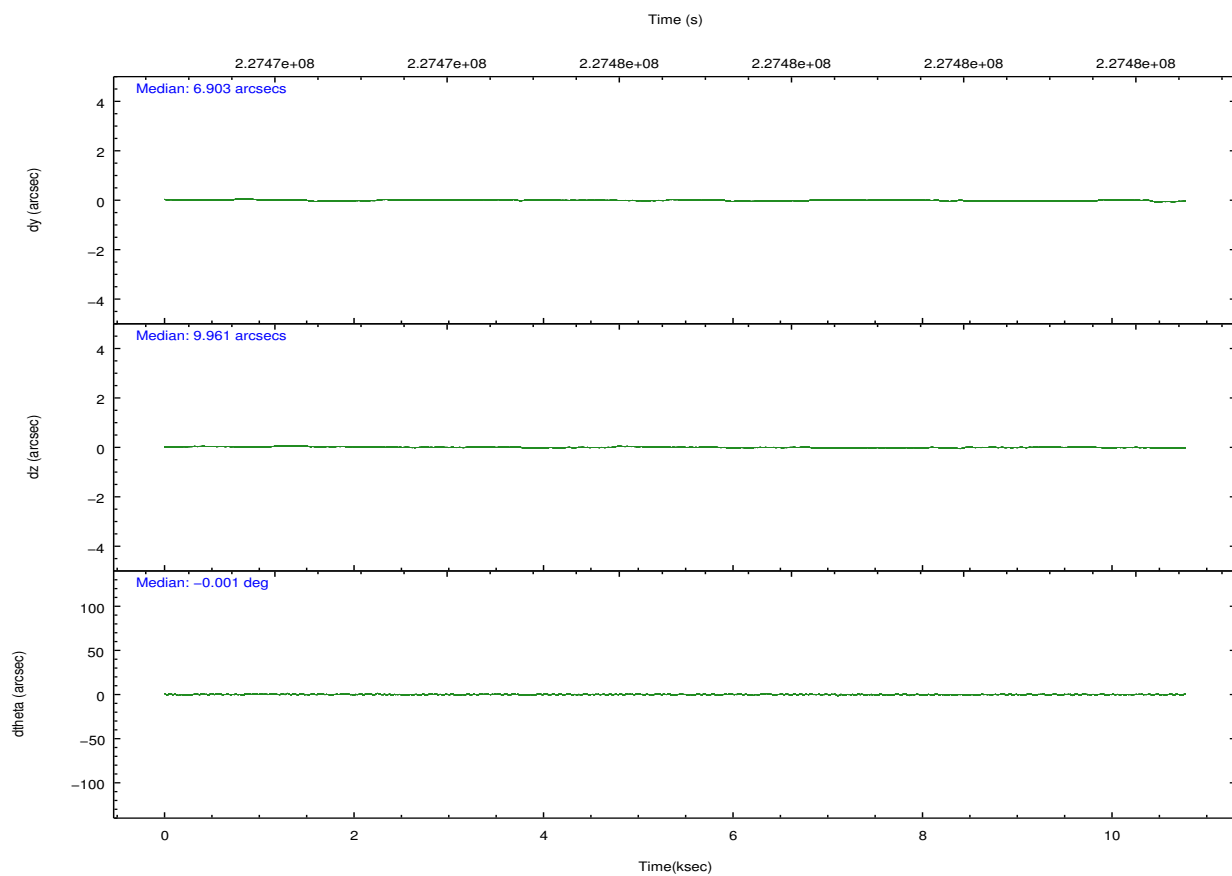
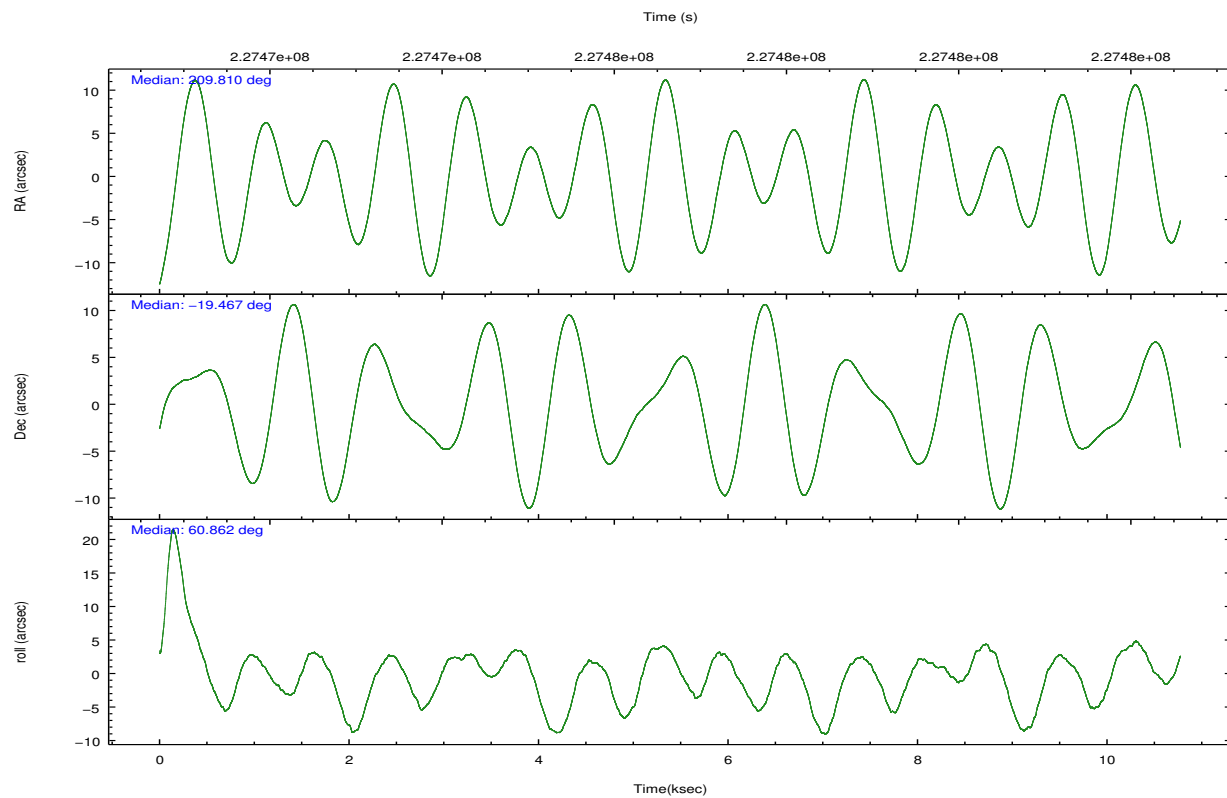
	ccd 0	ccd 1	ccd 2	ccd 3	ccd 6
grade 0 events	2333	2588	2610	3005	2414
	3%	4%	3%	4%	3%
grade 1 events	25	31	45	34	23
	0%	0%	0%	0%	0%
grade 2 events	1428	1496	1468	1310	1410
	2%	2%	2%	2%	2%
grade 3 events	767	802	670	716	728
	1%	1%	1%	1%	1%
grade 4 events	636	795	643	712	709
	1%	1%	0%	1%	1%
grade 5 events	2150	2367	2148	2483	2486
	3%	4%	3%	4%	3%
grade 6 events	1234	1459	1168	1187	1368
	2%	2%	1%	1%	2%
grade 7 events	51692	48776	57141	52306	53671
	85%	83%	86%	84%	85%

2.2 Compared Parameters

Parameter	Planned	Actual
Instrument	ACIS	ACIS
Detector	ACIS-01236	ACIS-01236
Grating	NONE	NONE
Data mode	VFAINT	VFAINT
Observation mode	POINTING	POINTING
[deg] Pointing RA	209.810029	209.8094597311041
[deg] Pointing Dec	-19.494435	-19.46699017034931
[deg] Pointing Roll	60.660184	60.86867587646983
[mm] SIM focus pos	-0.782348	-0.7809083437167272
[mm] SIM defocus	0	0.001439871863259334
[mm] SIM translation stage pos	-229.442463	-229.4438428438578
[mm] SIM translation stage offset	-4.15	-4.148610159071865
[s] Observation start time (MET)	227472039.184000	227470814.27045
Observation start date	2005-03-17T18:39:35	2005-03-17T18:20:14
[s] Observation end time (MET)	227482039.184000	227483145.53351
Observation end date	2005-03-17T21:26:15	2005-03-17T21:45:45
Read mode	TIMED	TIMED

Parameter	Planned	Actual
Obspar format version number	7	7
Obspar file type	PREDICTED	ACTUAL
Obspar update status	NONE	UPDATED
Number of optional ACIS chips dropped	0	0
On-chip summing requested	N	N
Subarray requested	NONE	NONE
Alternating exposures requested	N	N
[s] Primary exposure time	0.000000	3.1

2.3 Aspect

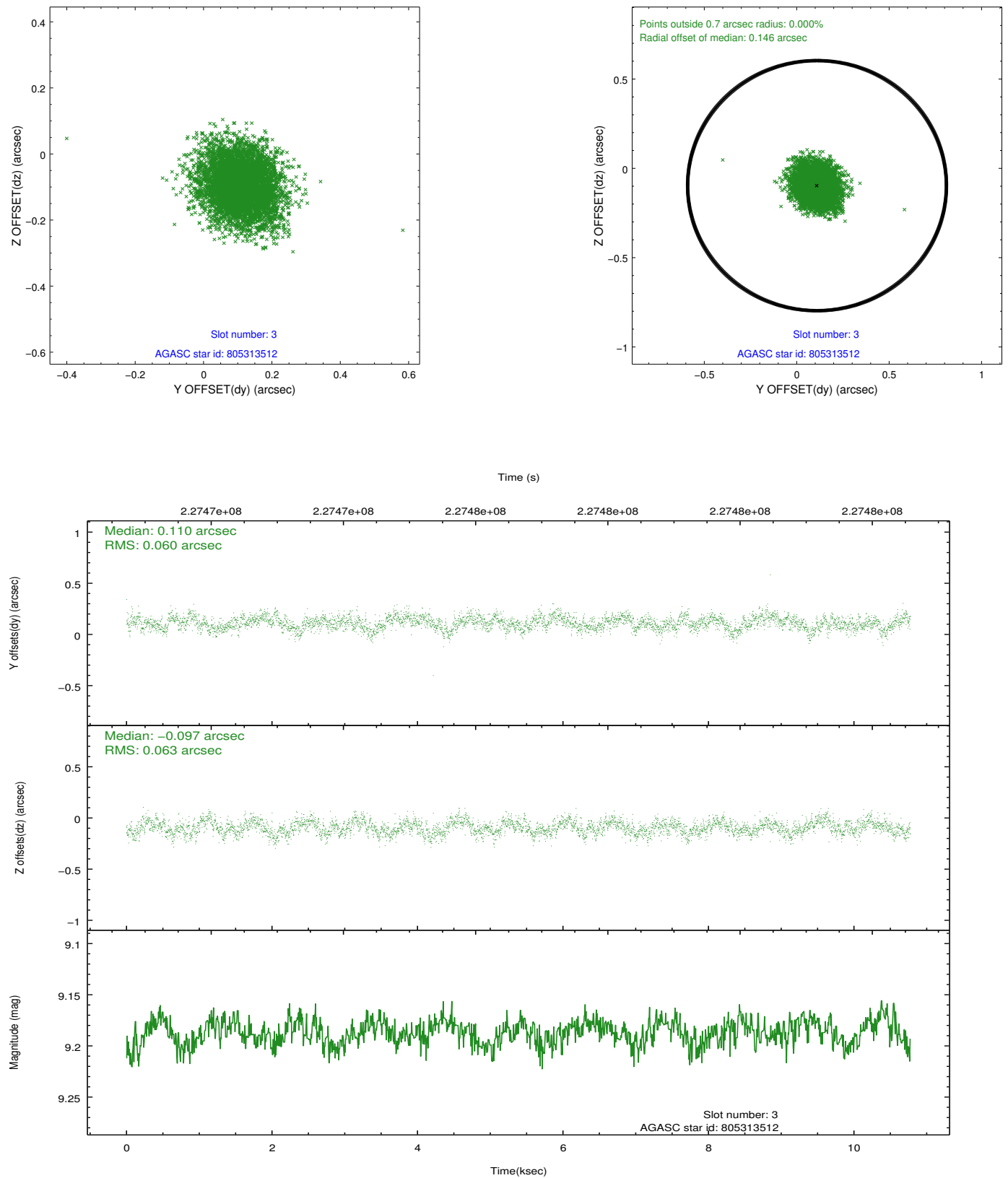


Slot Statistics

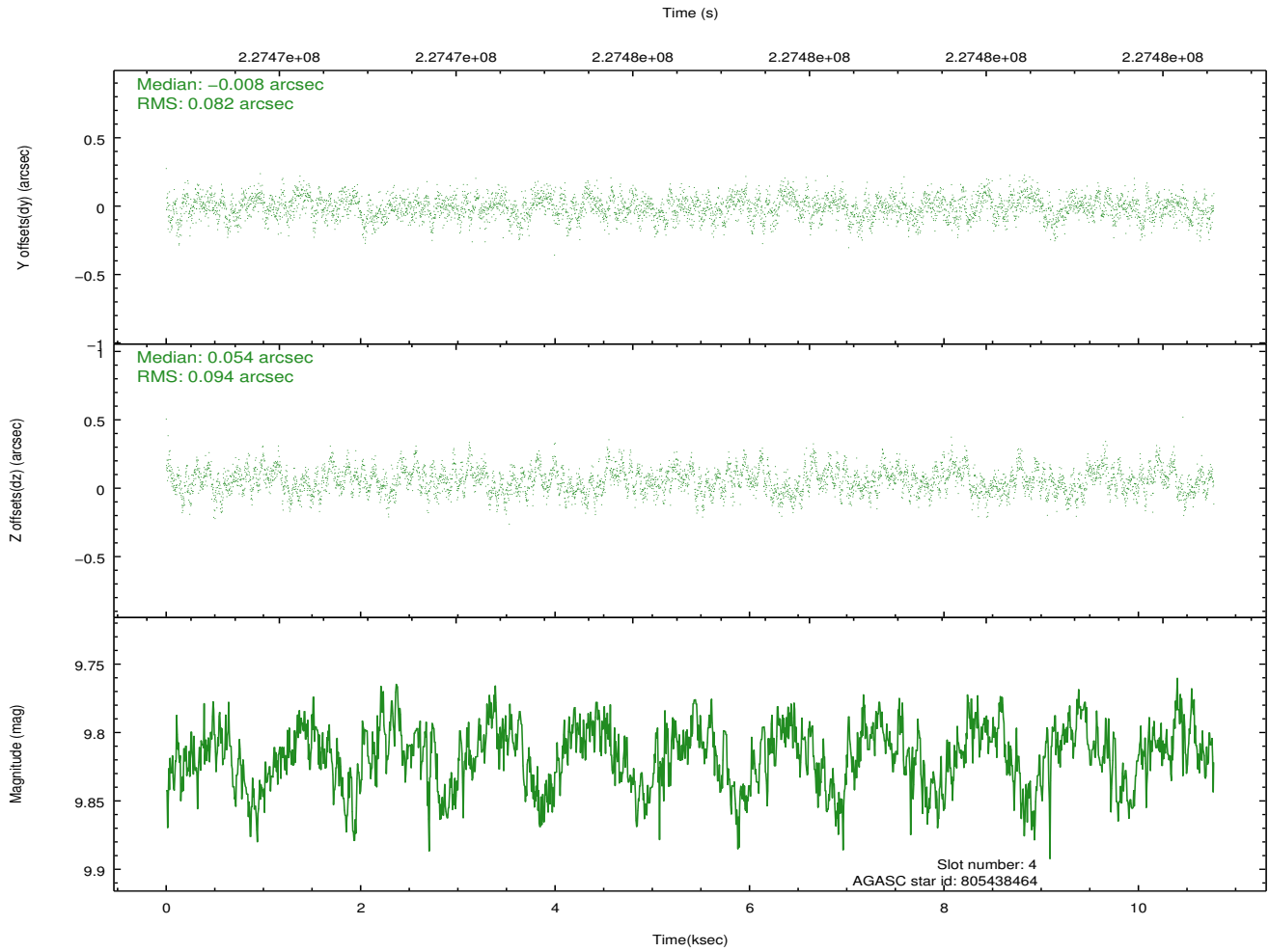
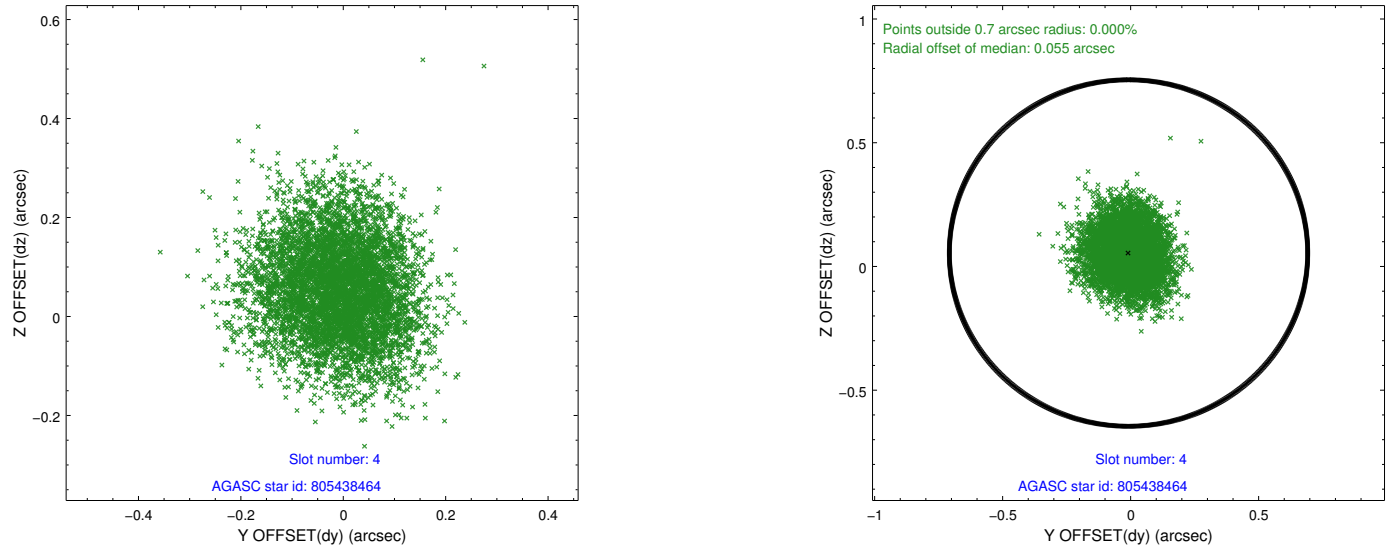
slot	status	id	mag	n_pts	med_dy	med_dz	dr1	dr2	ra	dec	mean_y	mean_z
0	FID	ACIS-I-1	7.25	2628	0.058	-0.021	0.006	0.010	0.000000	0.000000	932.76	-918.58
1	FID	ACIS-I-5	7.23	2629	-0.192	0.069	0.006	0.010	0.000000	0.000000	-1815.31	978.75
2	FID	ACIS-I-6	7.25	2629	0.042	0.023	0.007	0.011	0.000000	0.000000	397.79	1623.74
3	GUIDE	805313512	9.19	5254	0.110	-0.097	0.091	0.150	209.099234	-19.852223	-2306.50	1464.42
4	GUIDE	805438464	9.82	5243	-0.008	0.054	0.133	0.213	210.452871	-19.096125	2317.74	-1205.18
5	GUIDE	805309312	10.23	5194	-0.249	-0.105	0.158	0.255	209.746430	-18.889324	1792.88	1256.32
6	GUIDE	805311216	10.44	5252	-0.012	-0.130	0.158	0.255	209.896419	-18.897513	2017.73	797.04
7	GUIDE	805442240	10.37	5251	0.158	0.265	0.155	0.250	210.070539	-20.008130	-1180.05	-1674.18

2.4 Star Slots

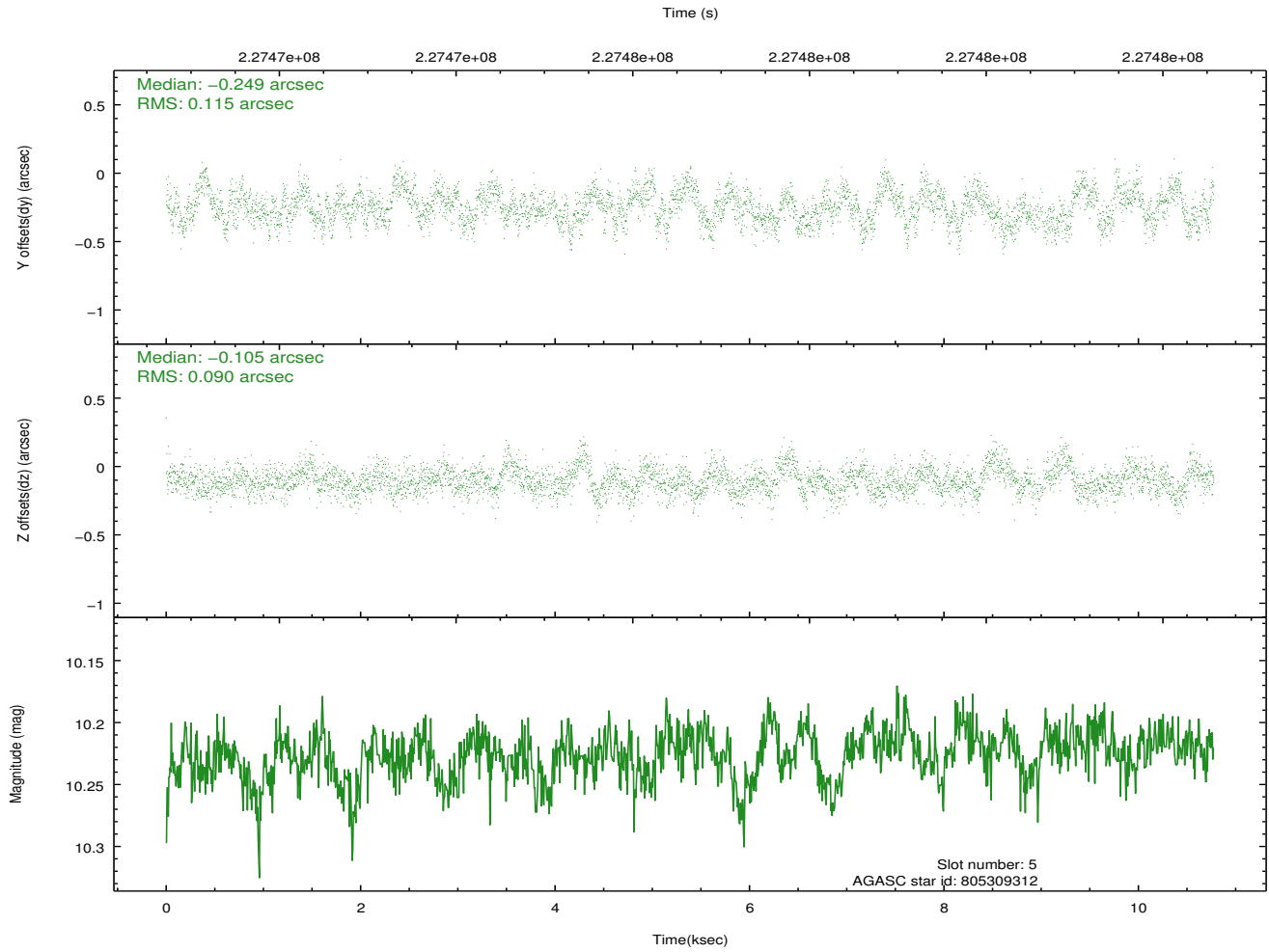
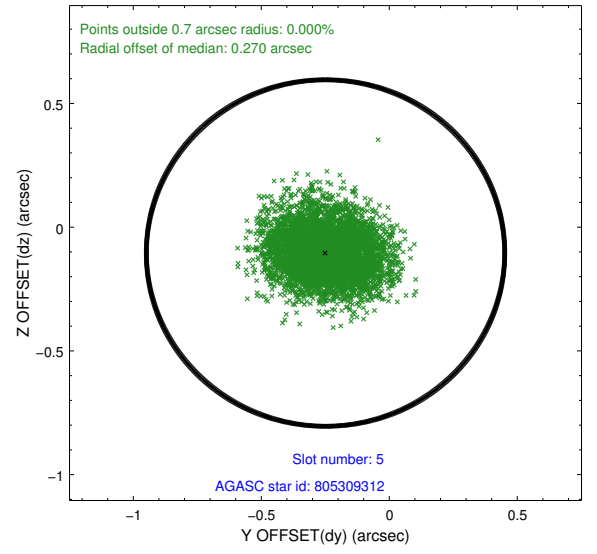
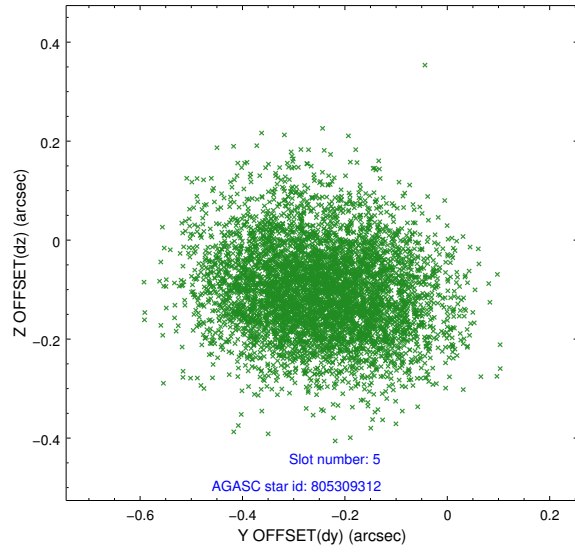
2.4.1 Slot 3



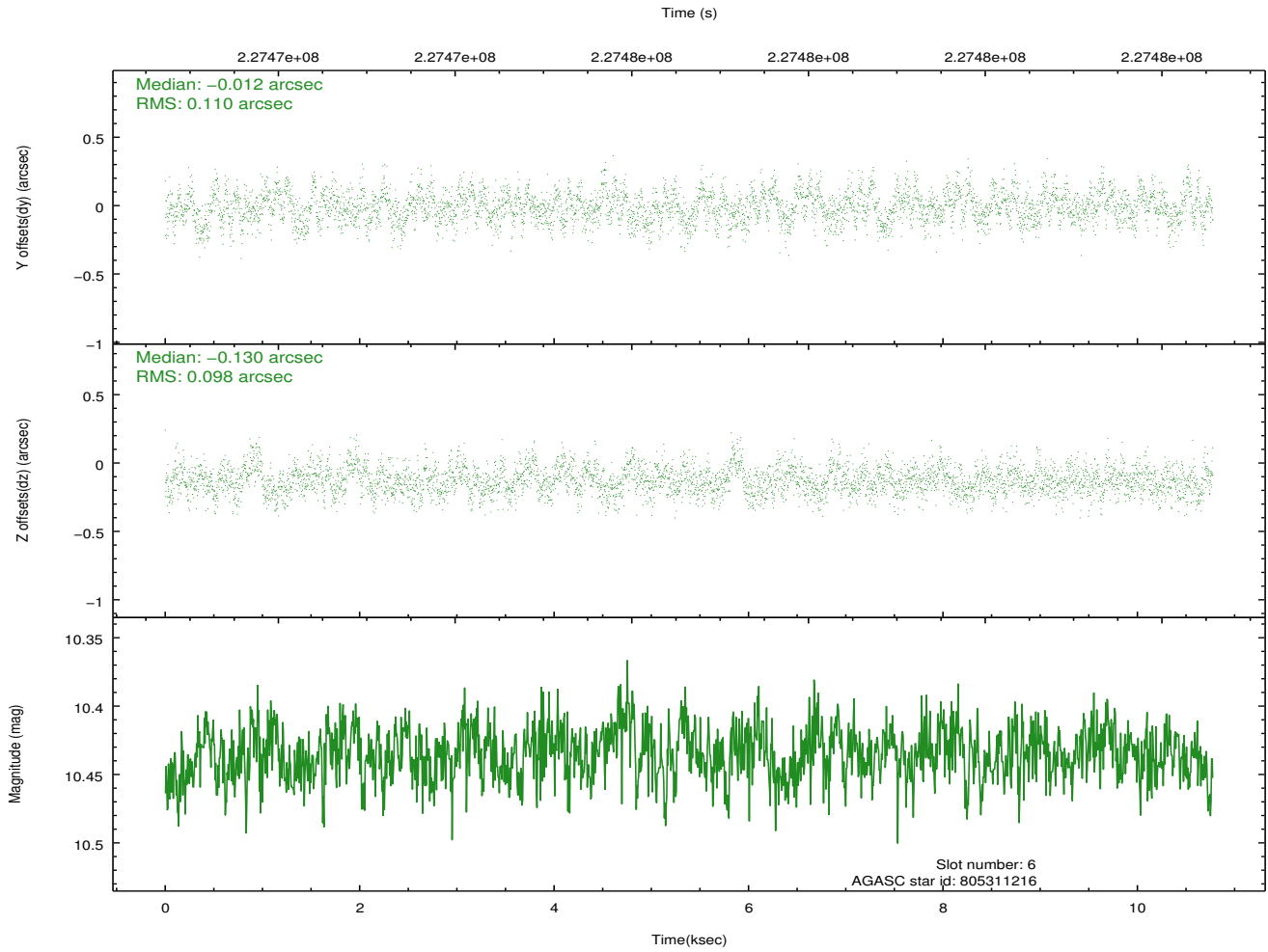
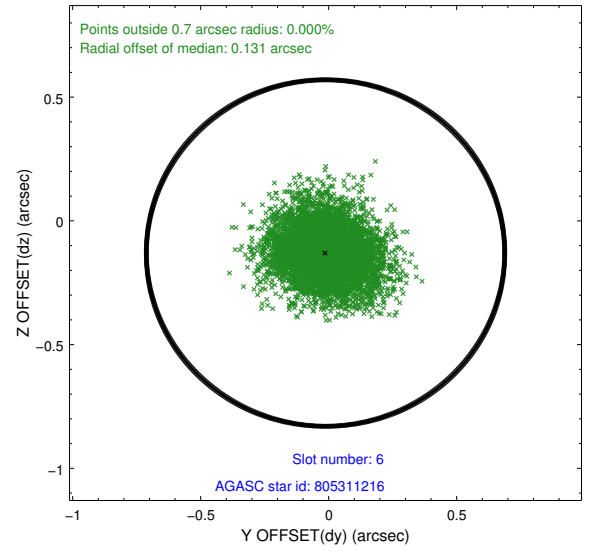
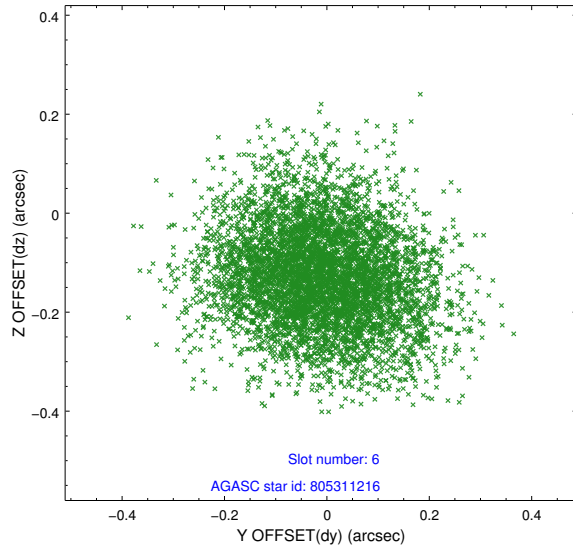
2.4.2 Slot 4



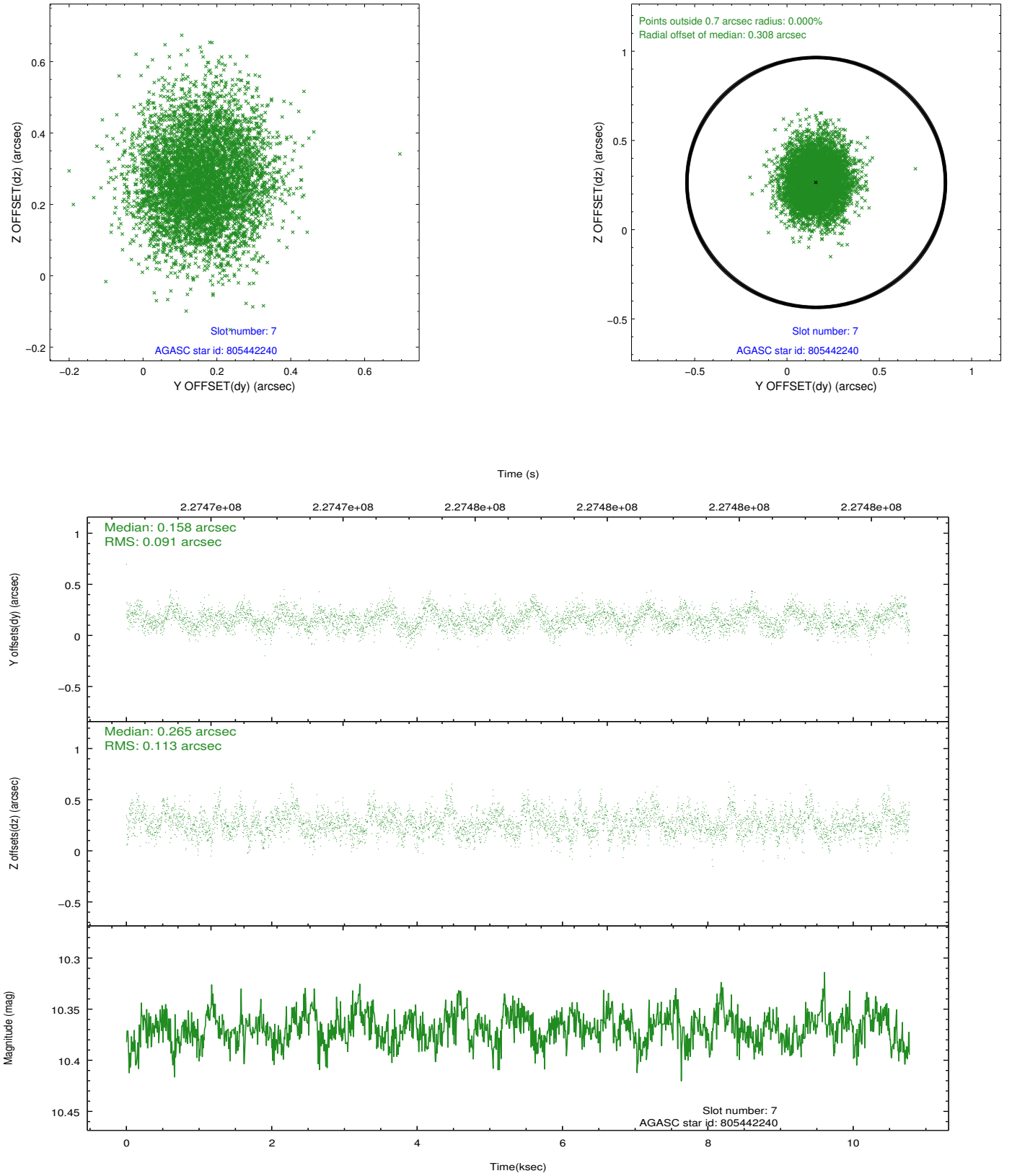
2.4.3 Slot 5



2.4.4 Slot 6

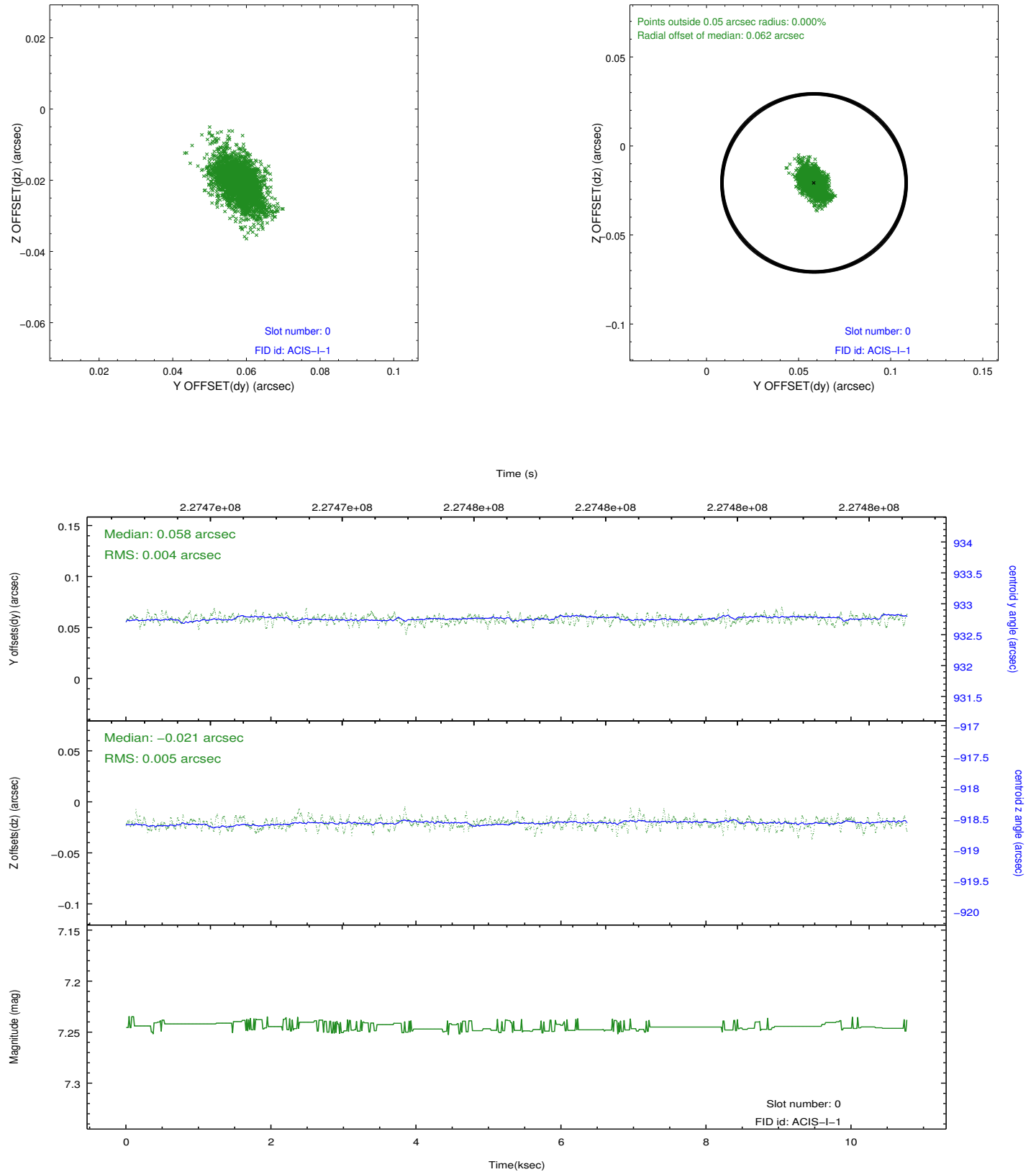


2.4.5 Slot 7

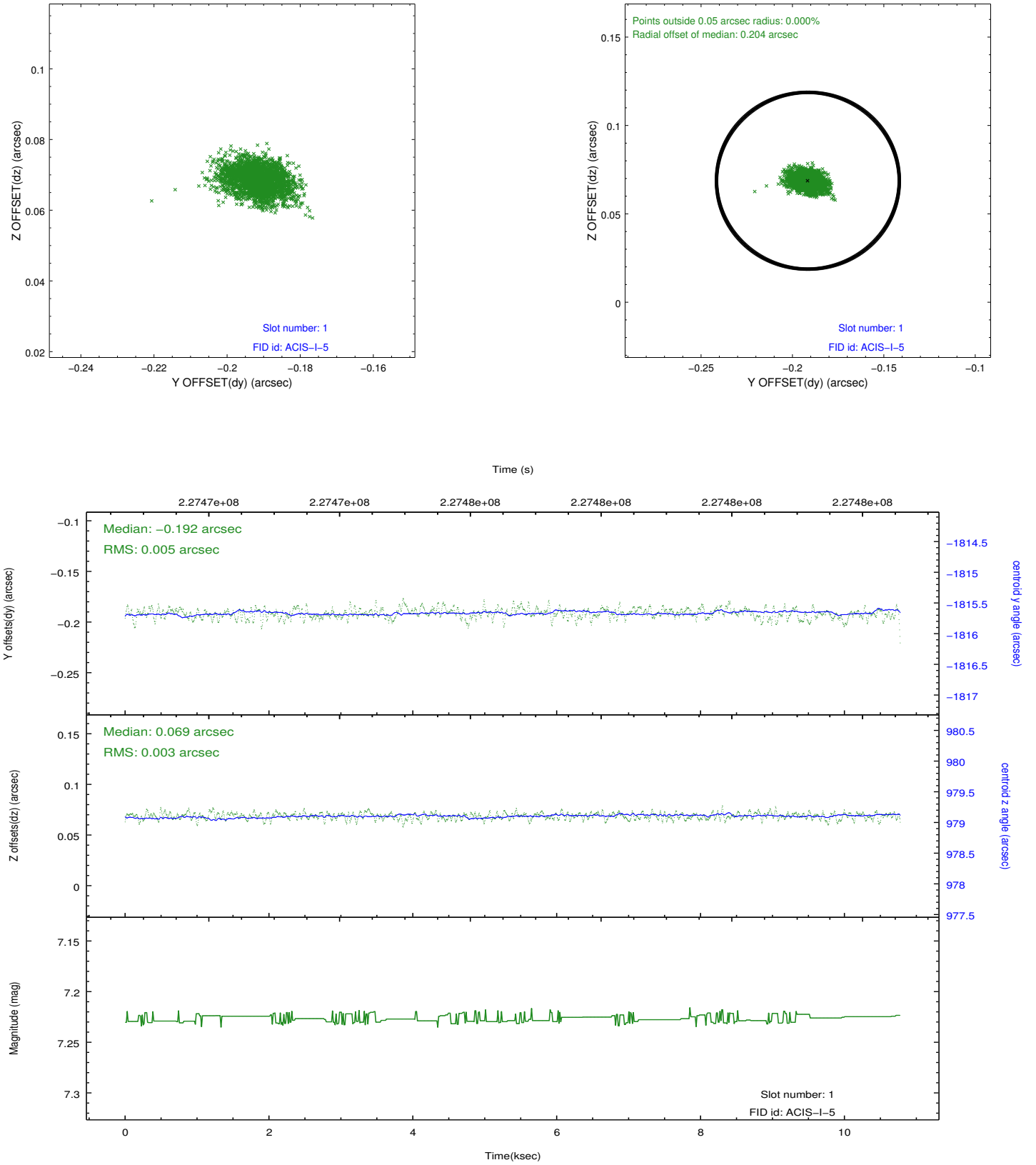


2.5 FID Slots

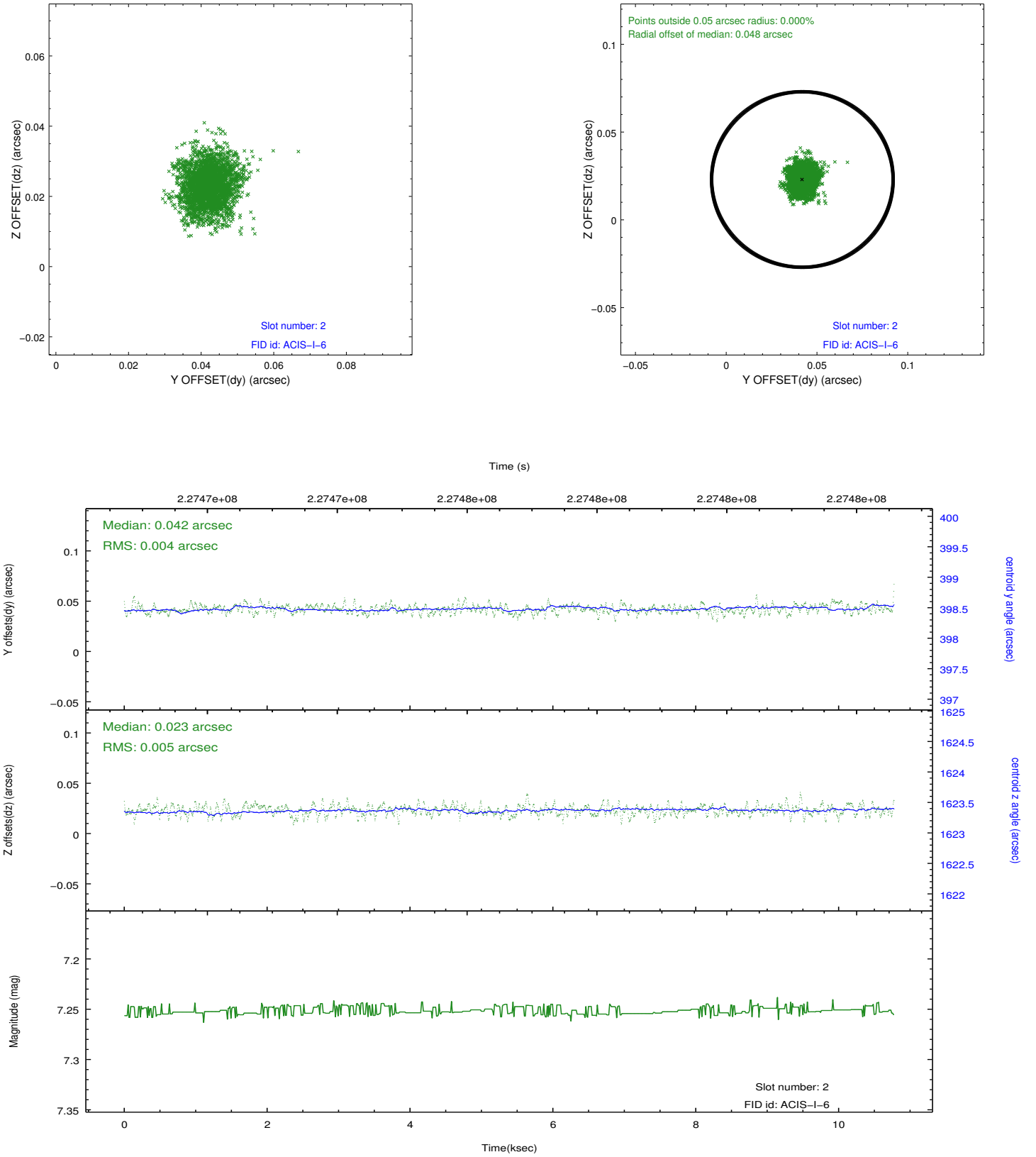
2.5.1 Slot 0



2.5.2 Slot 1



2.5.3 Slot 2



A Summary

A.1 Status

V&V Scientist	Jen Lauer
V&V Date (YYYY-MM-DD)	2013.01.11
V&V Edition	1
V&V Disposition and Status	OK
V&V Charge Time	10.05019

A.2 Comments