

# V&V Reference Report

## L2 ASCDS Version : 7.6.7

Observation 5811 - L2 Version 002  
Chandra X-Ray Center

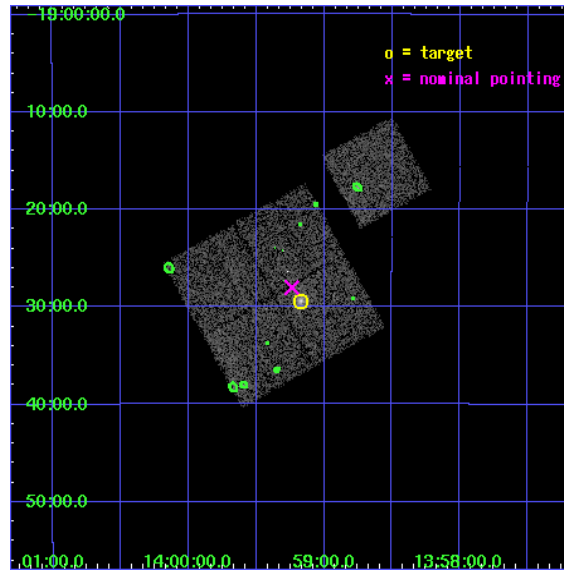
L2 Processing Date: Feb 27 2006

## Contents

<b>1</b>	<b>Front</b>	<b>2</b>
<b>2</b>	<b>OBI</b>	<b>3</b>
2.1	OBI . . . . .	3
2.1.1	Images . . . . .	3
2.1.2	Bias . . . . .	3
2.1.3	Parameters . . . . .	4
2.1.4	Events . . . . .	4
2.2	Compared Parameters . . . . .	5
2.3	Aspect . . . . .	6
2.4	Star Slots . . . . .	9
2.4.1	Slot 3 . . . . .	9
2.4.2	Slot 4 . . . . .	10
2.4.3	Slot 5 . . . . .	11
2.4.4	Slot 6 . . . . .	12
2.4.5	Slot 7 . . . . .	13
2.5	FID Slots . . . . .	14
2.5.1	Slot 0 . . . . .	14
2.5.2	Slot 1 . . . . .	15
2.5.3	Slot 2 . . . . .	16
<b>3</b>	<b>Point Sources</b>	<b>17</b>
<b>A</b>	<b>Summary</b>	<b>18</b>
A.1	Status . . . . .	18
A.2	Comments . . . . .	18

# 1 Front

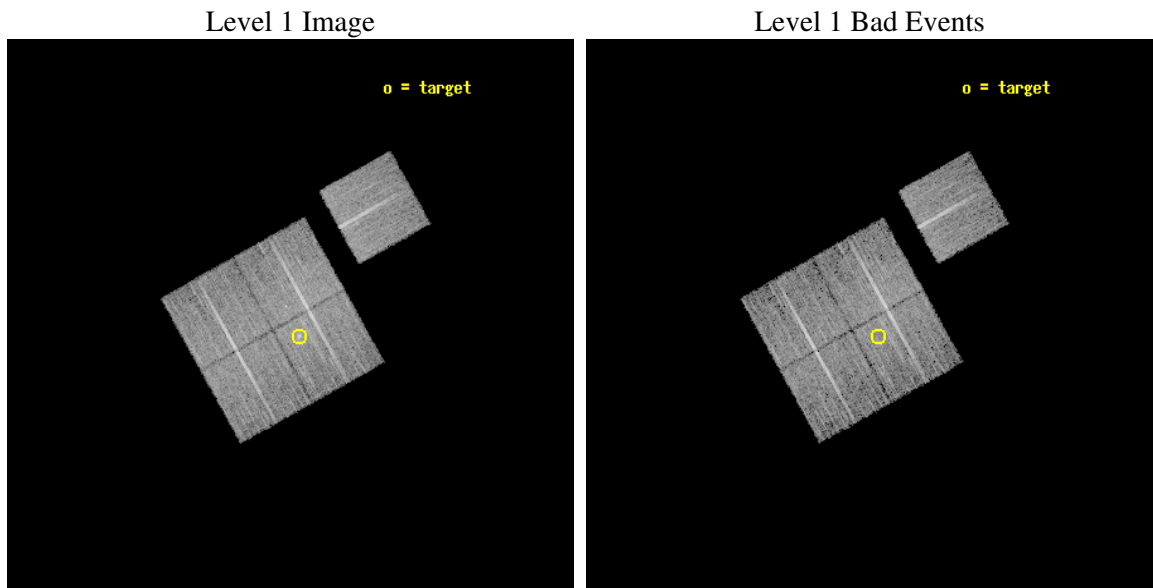
seq_num	800524
obs_id	5811
title	MACS: The most massive galaxy clusters at $z>0.3$
observer	Dr. Harald Ebeling
object	MACSJ1359.1-1929
dtcycle	0
cycle	P
ra_targ	209.793458
dec_targ	-19.49025
ra_nom	209.80944529497
dec_nom	-19.467014384997
roll_nom	60.868671058703
revision	2
ontime	10050.199980676
livetime	9918.8867190791
ontime0	10047.058980495
ontime1	10050.199980676
ontime2	10040.776970118
ontime3	10050.199980676
ontime6	10047.058990419
l2events	28052



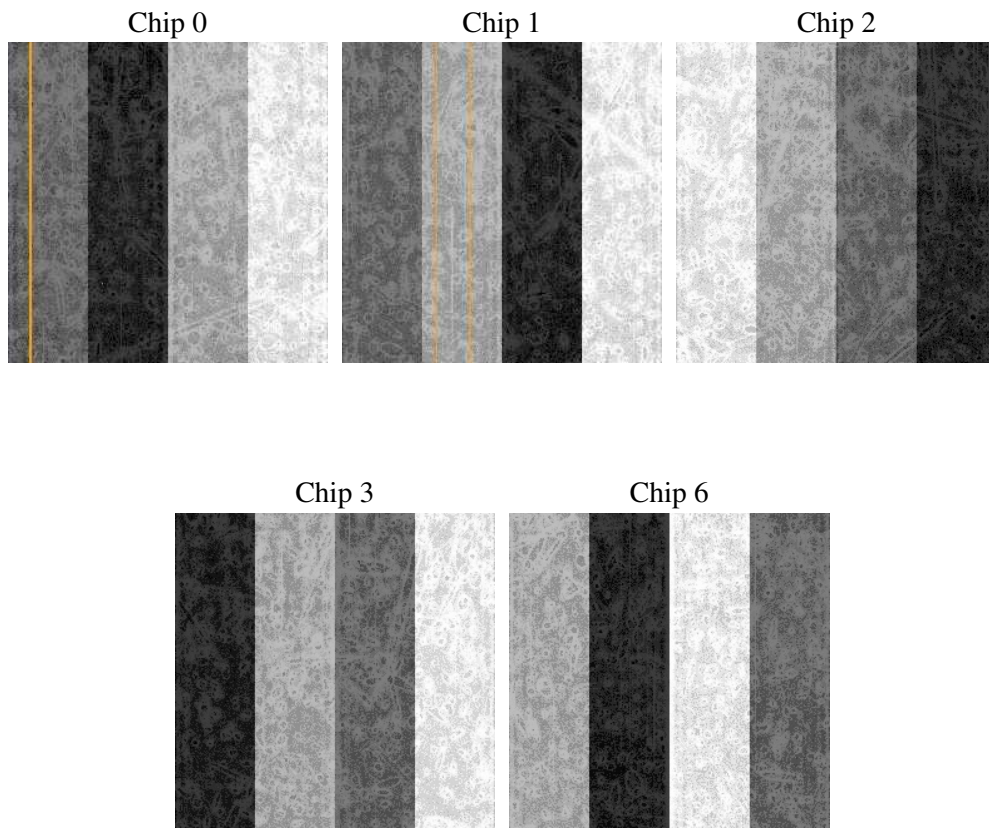
## 2 OBI

### 2.1 OBI

#### 2.1.1 Images



#### 2.1.2 Bias



### 2.1.3 Parameters

obi_num	0
ascdsver	7.6.7
caldbver	3.2.1
date	2006-02-27T12:38:28
revision	2

sched_exp_time	10000.000000
ontime	10054.384436369
ontime0	10051.243436188
ontime1	10054.384436369
ontime2	10044.961405903
ontime3	10054.384436369
ontime6	10051.243446112
l1events	309034

### 2.1.4 Events

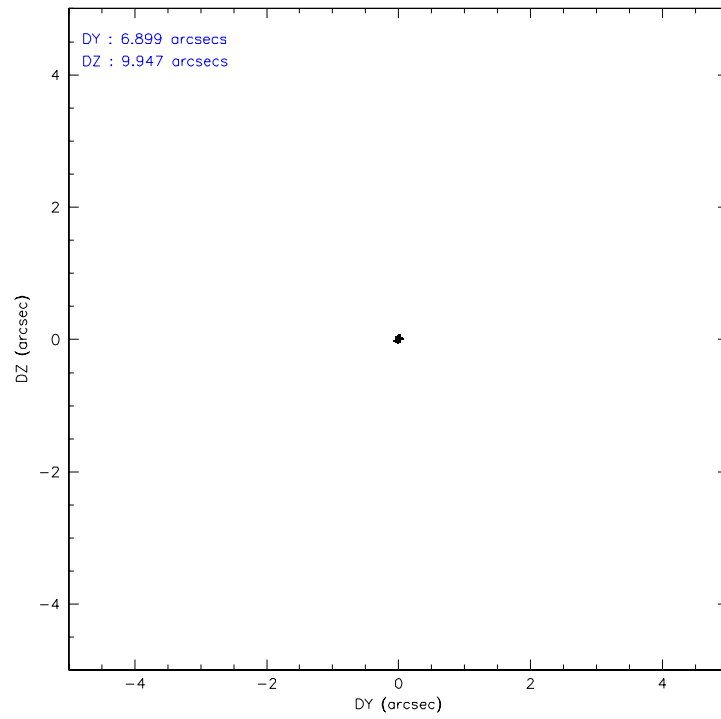
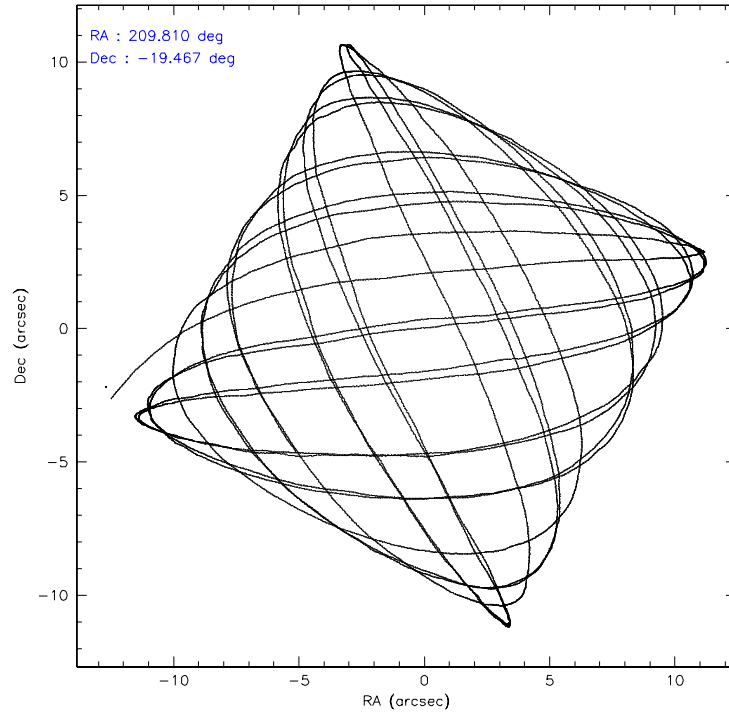
	ccd 0	ccd 1	ccd 2	ccd 3	ccd 6
level 1 events	60265	58314	65893	61753	62809
rejected events	53871	51175	59339	54826	56188
rejected %	89%	87%	90%	88%	89%

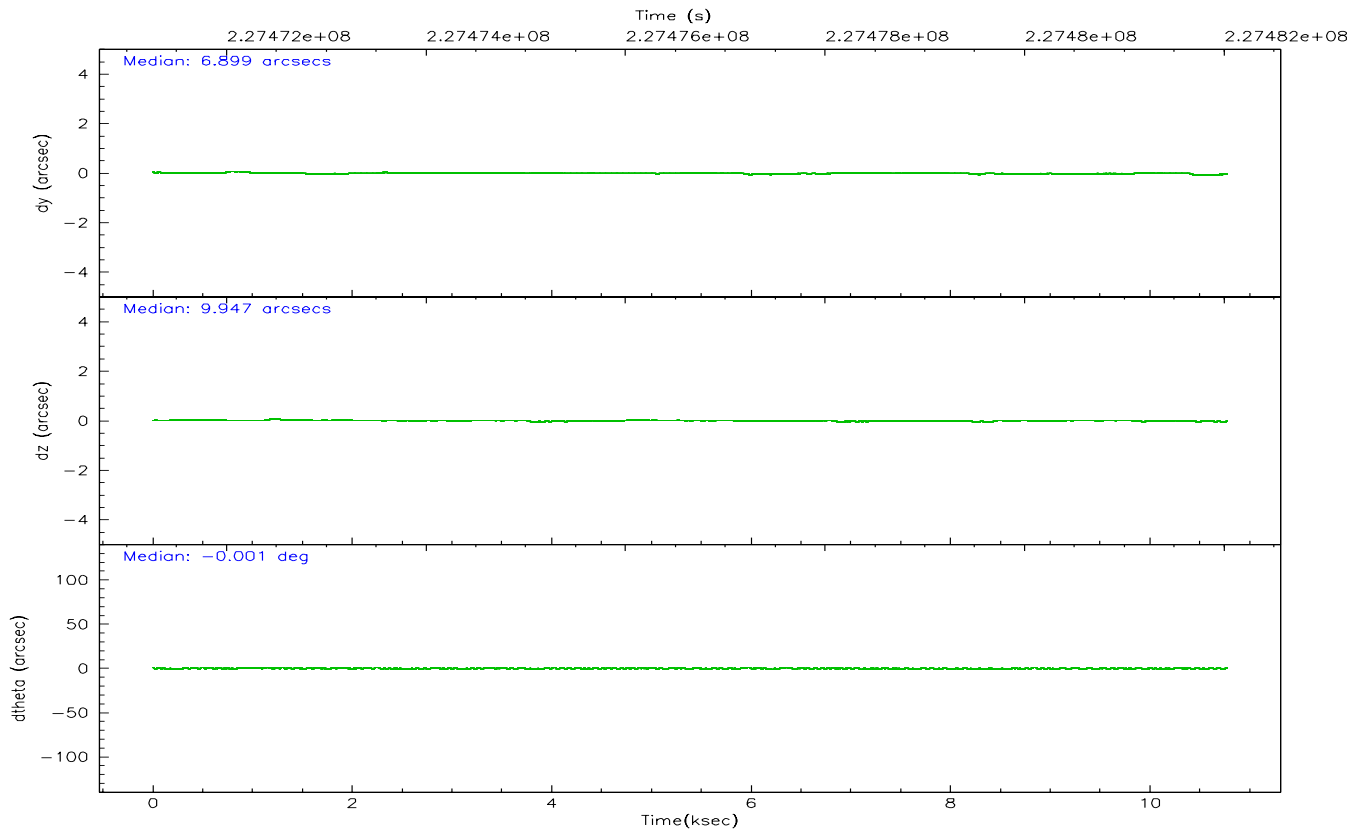
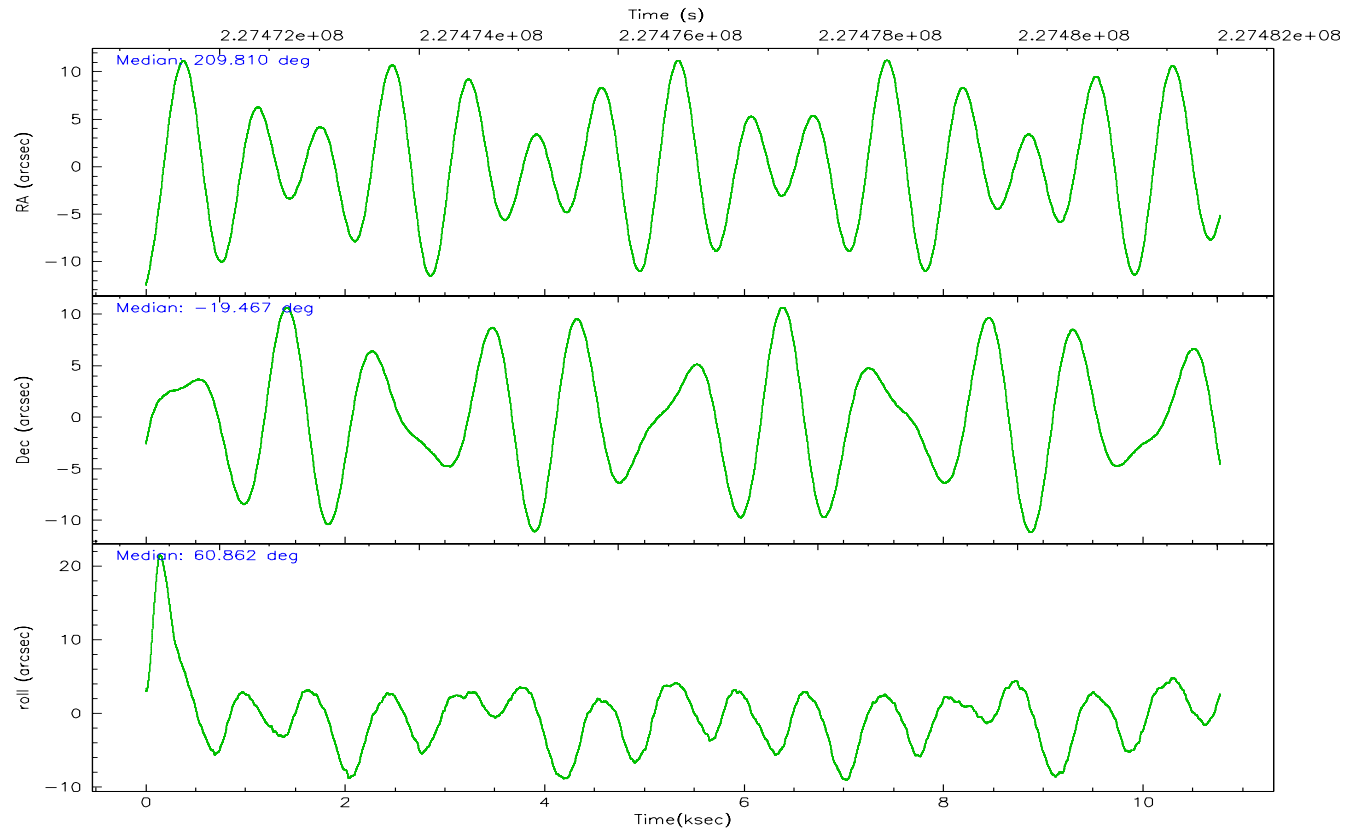
	ccd 0	ccd 1	ccd 2	ccd 3	ccd 6
grade 0 events	2333	2588	2610	3005	2414
	3%	4%	3%	4%	3%
grade 1 events	25	31	45	34	23
	0%	0%	0%	0%	0%
grade 2 events	1428	1496	1468	1310	1410
	2%	2%	2%	2%	2%
grade 3 events	767	801	670	716	728
	1%	1%	1%	1%	1%
grade 4 events	636	795	643	712	709
	1%	1%	0%	1%	1%
grade 5 events	2150	2366	2147	2483	2486
	3%	4%	3%	4%	3%
grade 6 events	1234	1461	1169	1187	1368
	2%	2%	1%	1%	2%
grade 7 events	51692	48776	57141	52306	53671
	85%	83%	86%	84%	85%

## 2.2 Compared Parameters

Parameter	Planned	Actual	Parameter	Planned	Actual
Instrument	ACIS	ACIS	Obspar format version number	6	6
Detector	ACIS-01236	ACIS-01236	Obspar file type	PREDICTED	ACTUAL
Grating	NONE	NONE	Obspar update status	NONE	UPDATED
Data mode	VFAINT	VFAINT	On-chip summing requested	N	N
Observation mode	POINTING	POINTING	Subarray requested	NONE	NONE
Pointing RA	209.810029	209.8094452949725	Alternating exposures requested	N	N
Pointing Dec	-19.494435	-19.46701438499749	Primary exposure time	0.000000	3.1
Pointing Roll	60.660184	60.86867105870333			
SIM focus pos (mm)	-0.782348	-0.7809083437167272			
SIM defocus (mm)	0	0.001439871863259334			
SIM translation stage pos (mm)	-229.442463	-229.4438428438578			
SIM translation stage offset (mm)	-4.15	-4.148610159071865			
Observation start time	227472039.184000	227470814.27045			
Observation start date	2005-03-17T18:39:35	2005-03-17T18:20:14			
Observation end time	227482039.184000	227483145.53351			
Observation end date	2005-03-17T21:26:15	2005-03-17T21:45:45			
Read mode	TIMED	TIMED			

## 2.3 Aspect



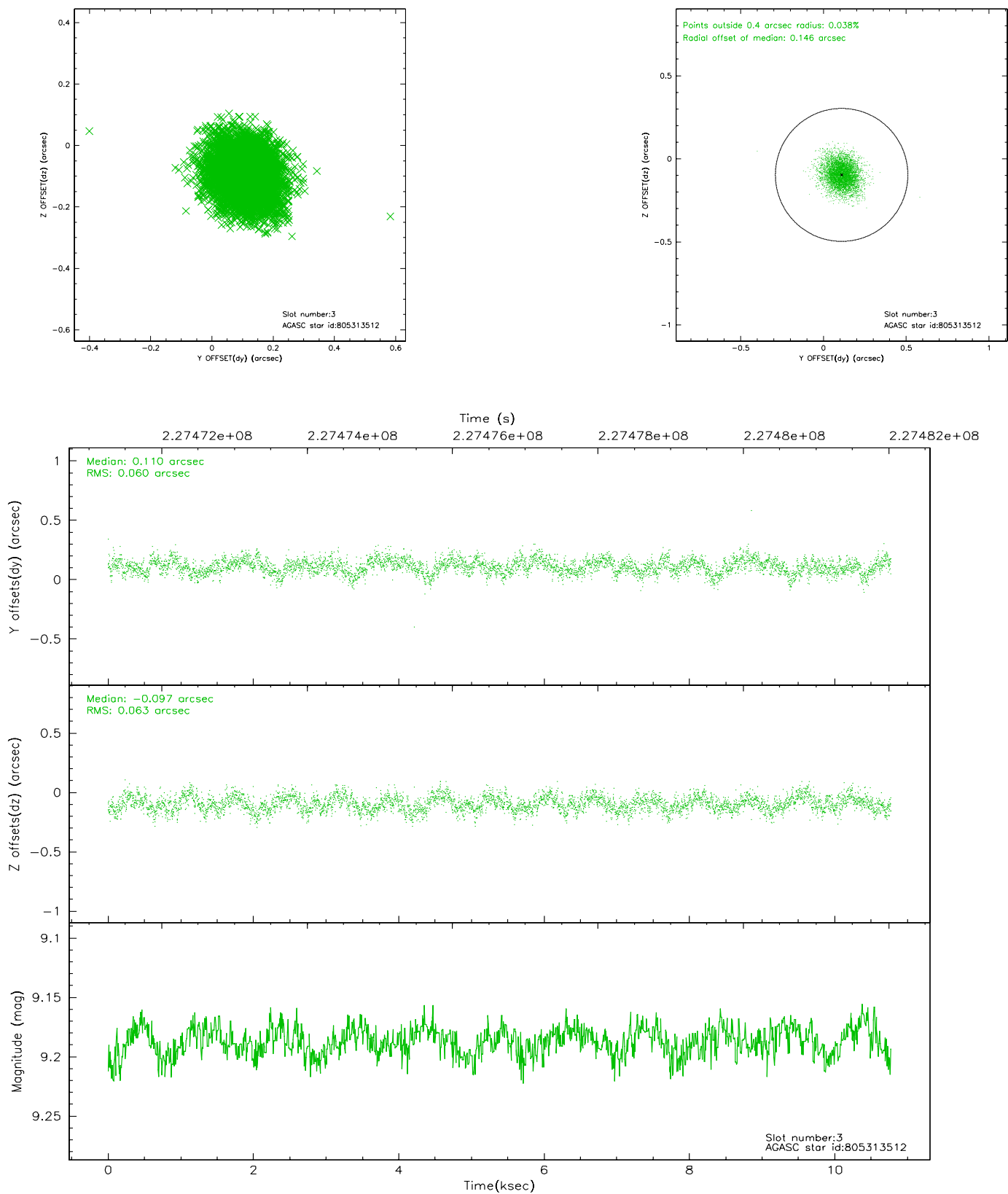


### Slot Statistics

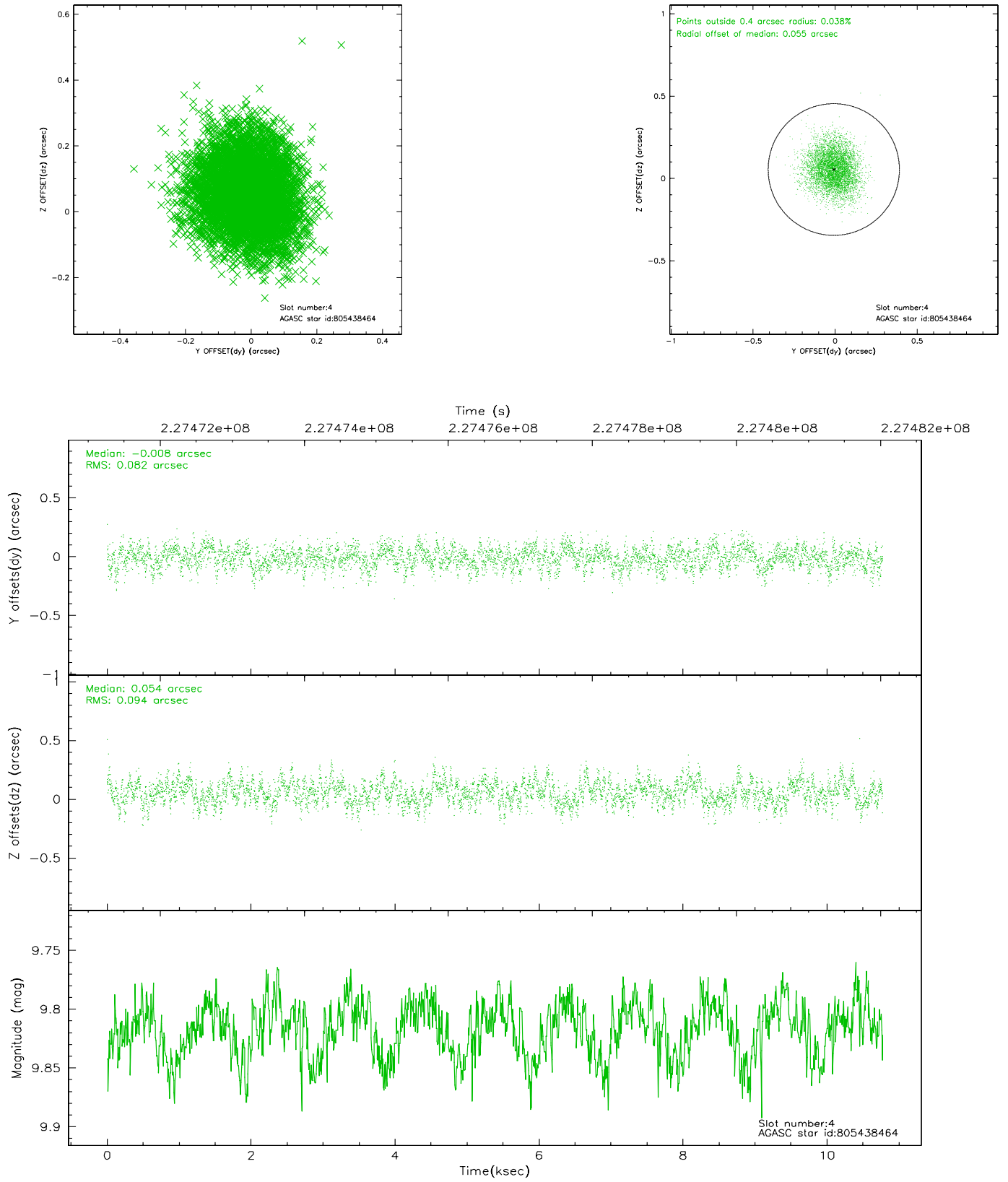
slot	status	id	mag	n_pts	med_dy	med_dz	dr1	dr2	ra	dec	mean_y	mean_z
0	FID	ACIS-I-1	7.25	2628	0.038	0.006	0.006	0.010	0.000000	0.000000	932.74	-918.54
1	FID	ACIS-I-5	7.23	2629	-0.161	0.061	0.006	0.010	0.000000	0.000000	-1815.28	978.76
2	FID	ACIS-I-6	7.25	2629	0.032	0.004	0.007	0.011	0.000000	0.000000	397.78	1623.73
3	GUIDE	805313512	9.19	5254	0.110	-0.097	0.091	0.150	209.099234	-19.852223	-2306.50	1464.42
4	GUIDE	805438464	9.82	5243	-0.008	0.054	0.133	0.213	210.452871	-19.096125	2317.74	-1205.18
5	GUIDE	805309312	10.23	5194	-0.249	-0.105	0.158	0.255	209.746430	-18.889324	1792.88	1256.32
6	GUIDE	805311216	10.44	5252	-0.012	-0.130	0.158	0.255	209.896419	-18.897513	2017.73	797.04
7	GUIDE	805442240	10.37	5251	0.158	0.265	0.155	0.250	210.070539	-20.008130	-1180.05	-1674.18

## 2.4 Star Slots

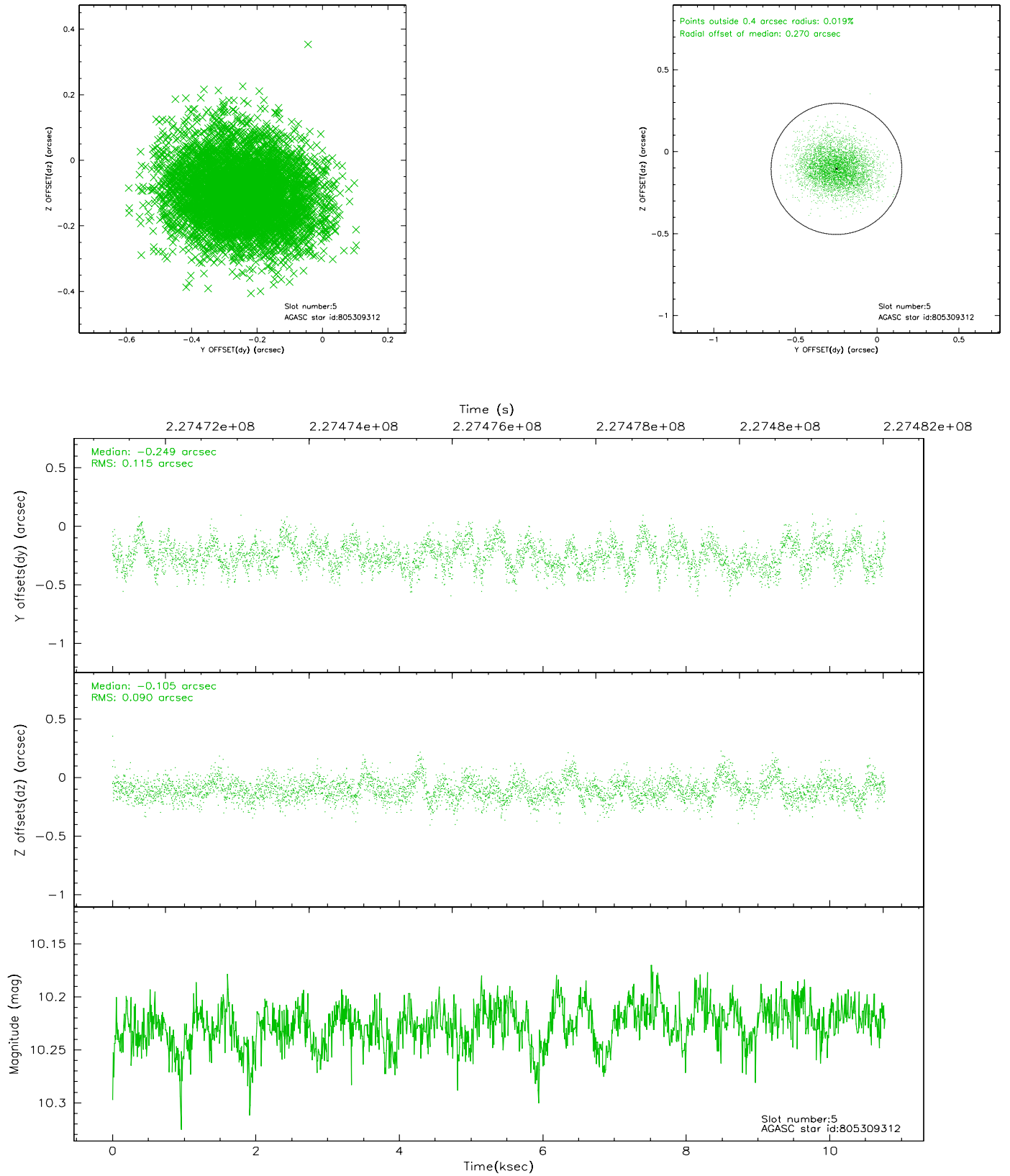
### 2.4.1 Slot 3



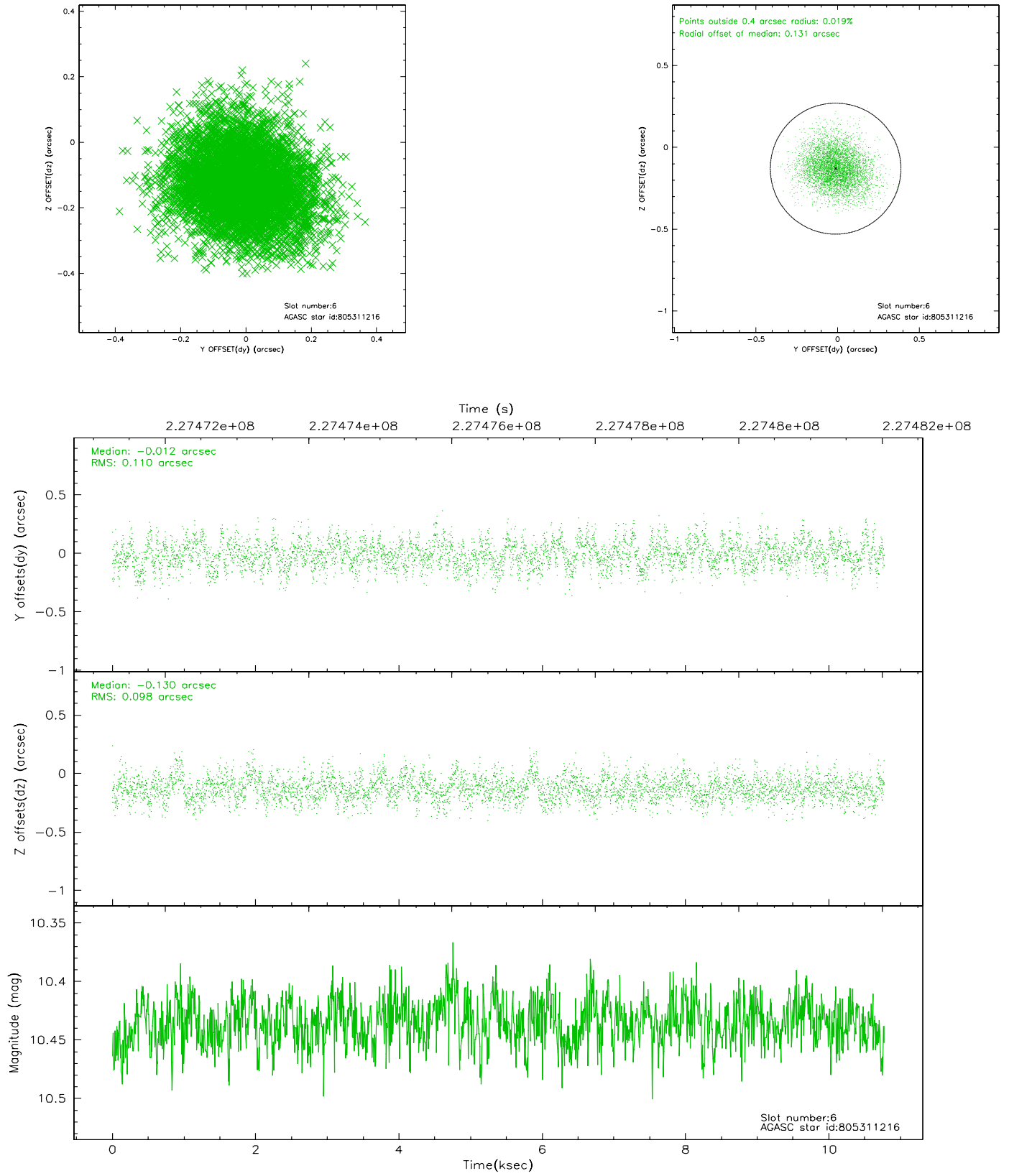
## 2.4.2 Slot 4



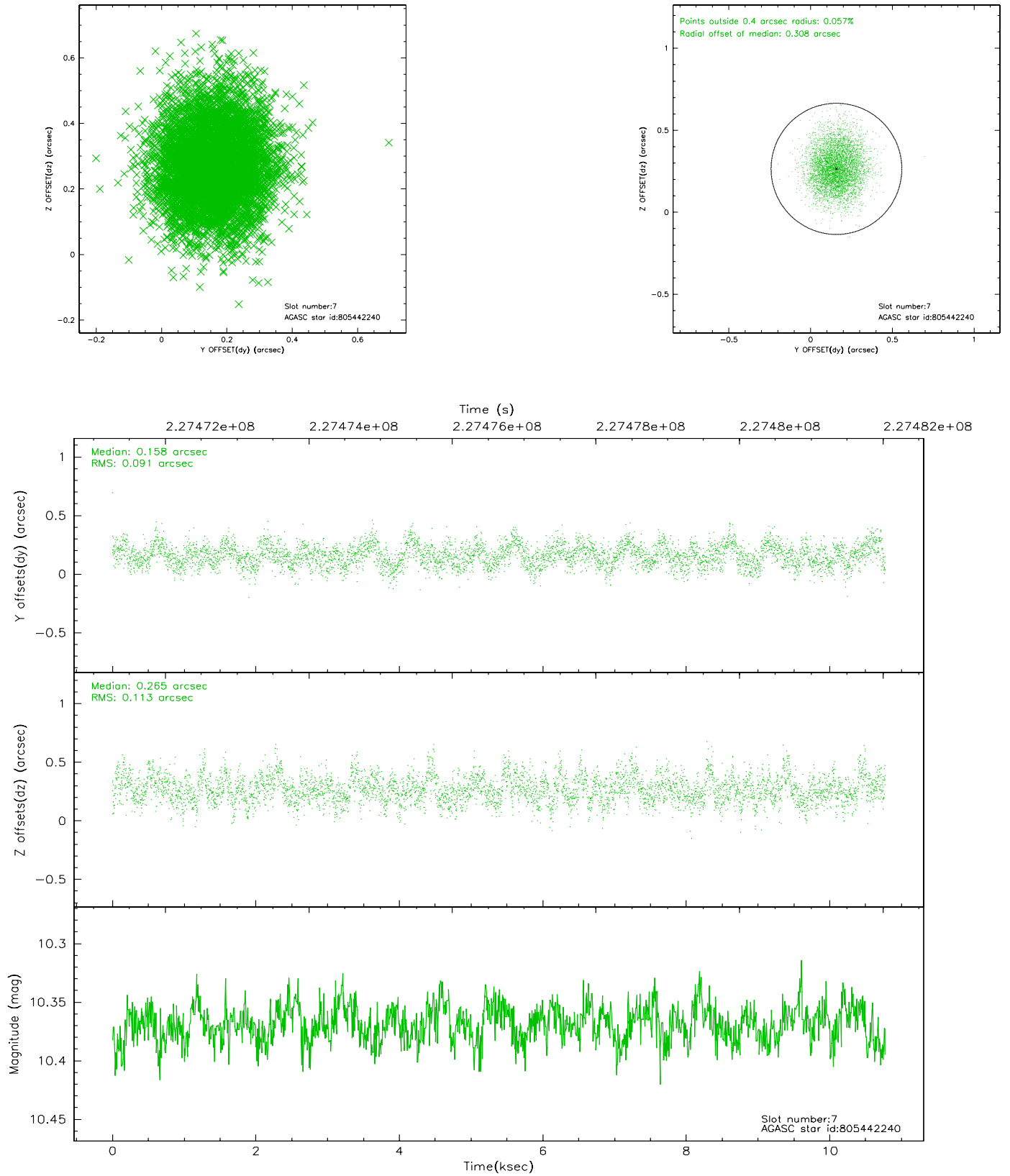
### 2.4.3 Slot 5



## 2.4.4 Slot 6

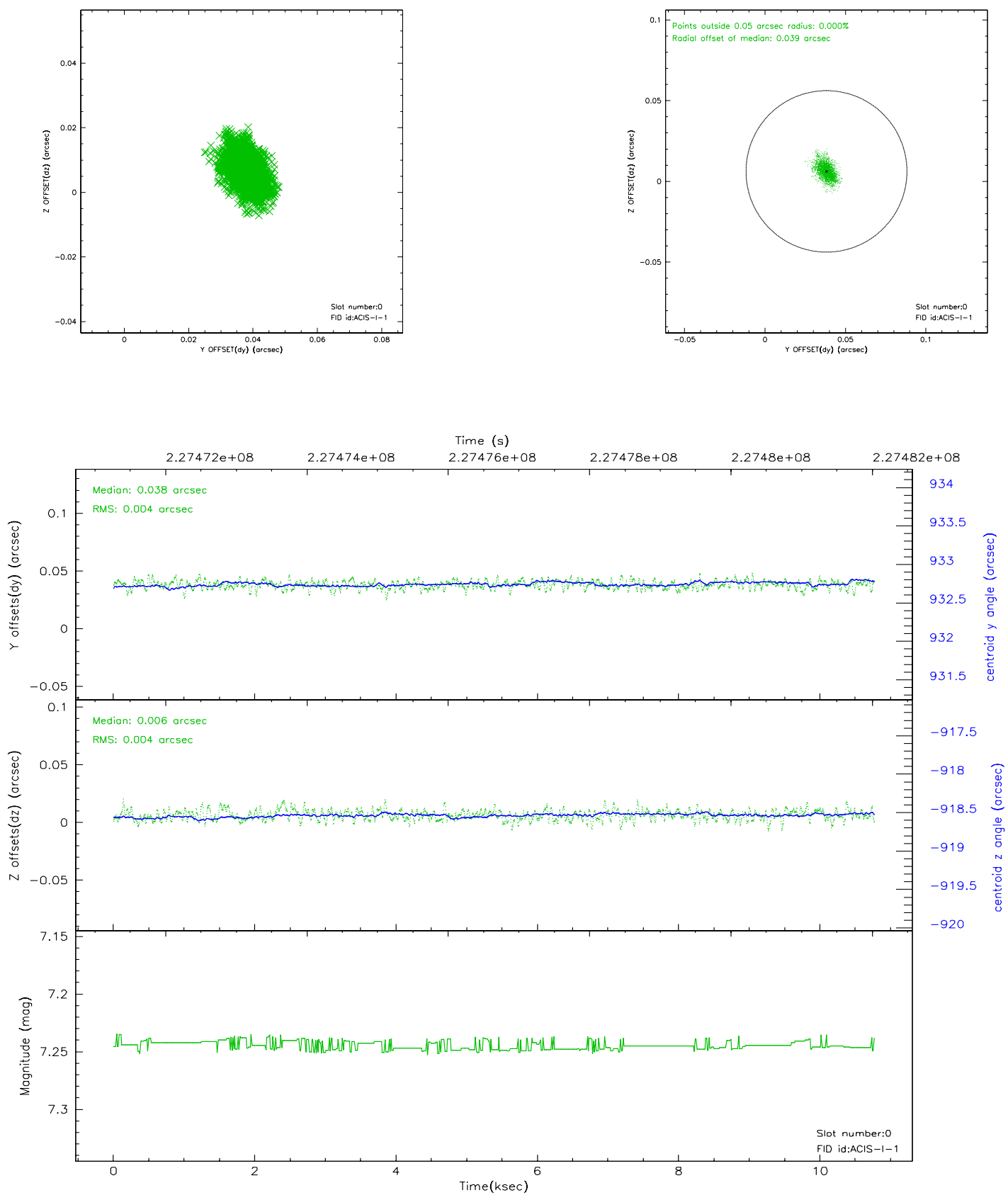


## 2.4.5 Slot 7

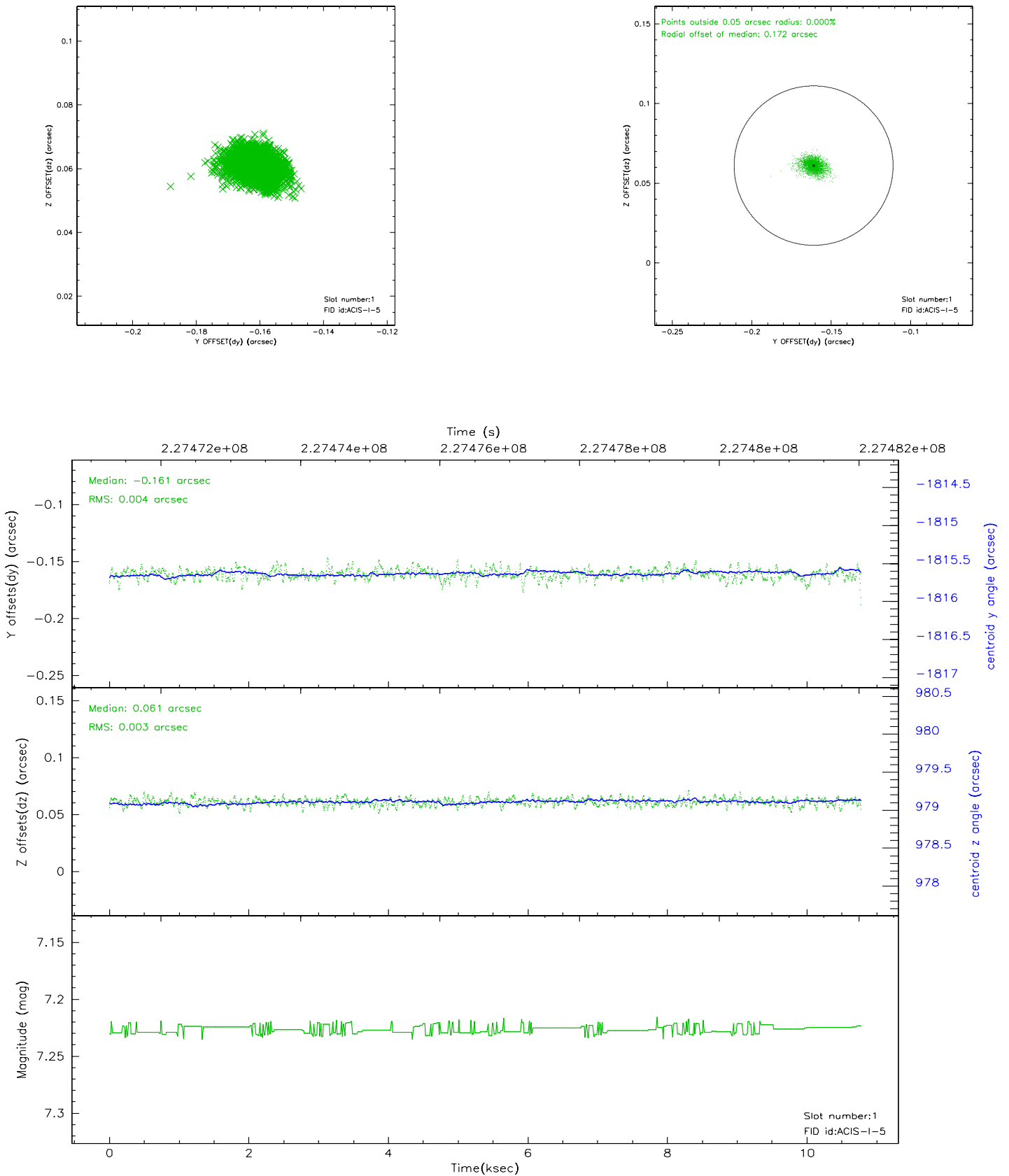


## 2.5 FID Slots

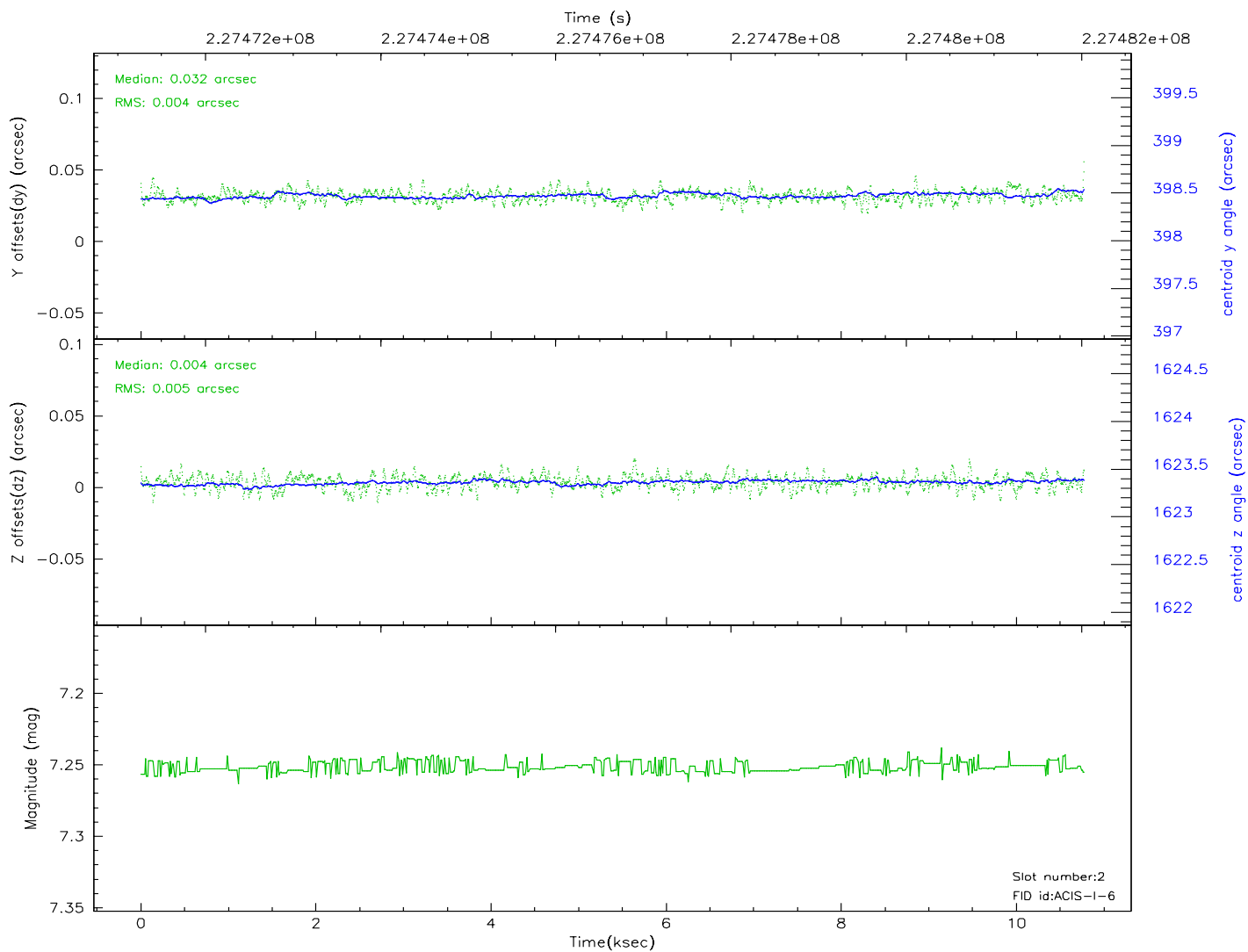
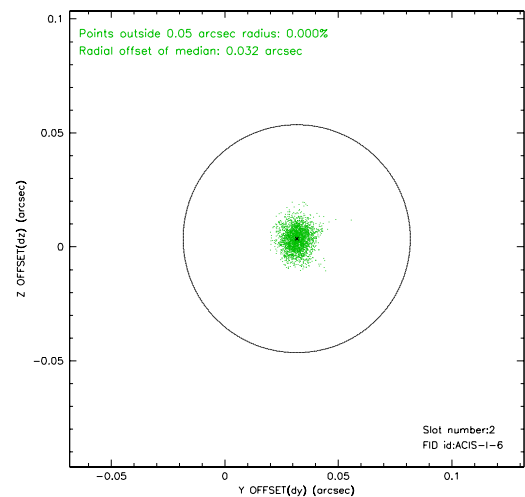
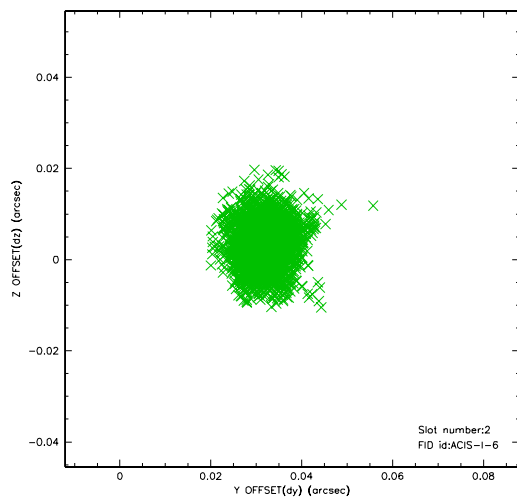
### 2.5.1 Slot 0



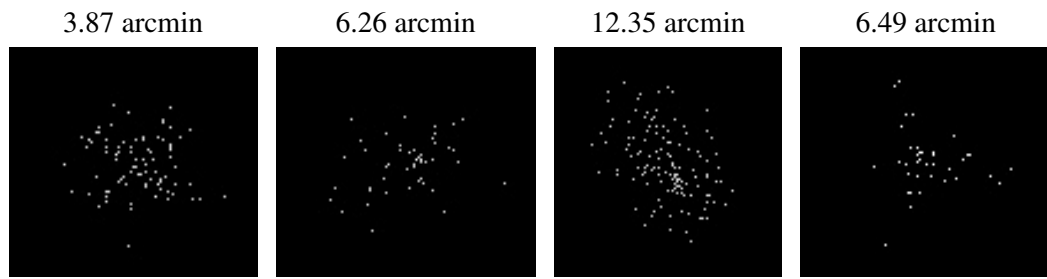
## 2.5.2 Slot 1



### 2.5.3 Slot 2



### 3 Point Sources



## A Summary

### A.1 Status

V&V Scientist	Beth Sundheim
V&V Date (YYYY-MM-DD)	2006.02.27
V&V Edition	1
V&V Disposition and Status	OK
V&V Charge Time	10.05019

### A.2 Comments