

V&V Reference Report

L2 ASCDS Version : 7.6.7

Observation 5802 - L2 Version 002
Chandra X-Ray Center

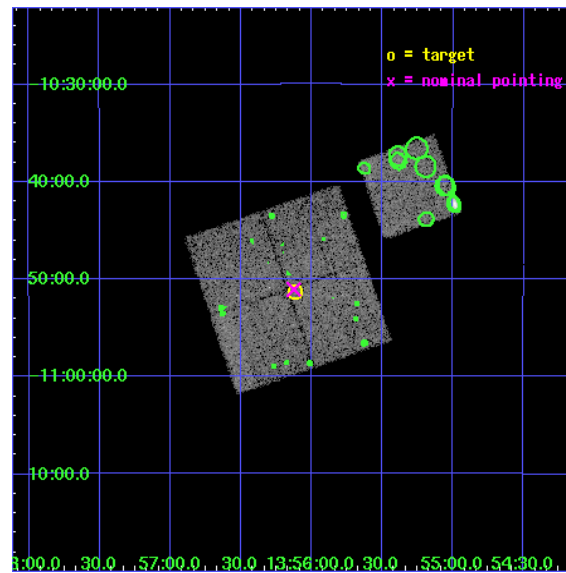
L2 Processing Date: Feb 27 2006

Contents

1	Front	2
2	OBI	3
2.1	OBI	3
2.1.1	Images	3
2.1.2	Bias	3
2.1.3	Parameters	4
2.1.4	Events	4
2.2	Compared Parameters	5
2.3	Aspect	6
2.4	Star Slots	9
2.4.1	Slot 3	9
2.4.2	Slot 4	10
2.4.3	Slot 5	11
2.4.4	Slot 6	12
2.4.5	Slot 7	13
2.5	FID Slots	14
2.5.1	Slot 0	14
2.5.2	Slot 1	15
2.5.3	Slot 2	16
3	Point Sources	17
A	Summary	18
A.1	Status	18
A.2	Comments	18

1 Front

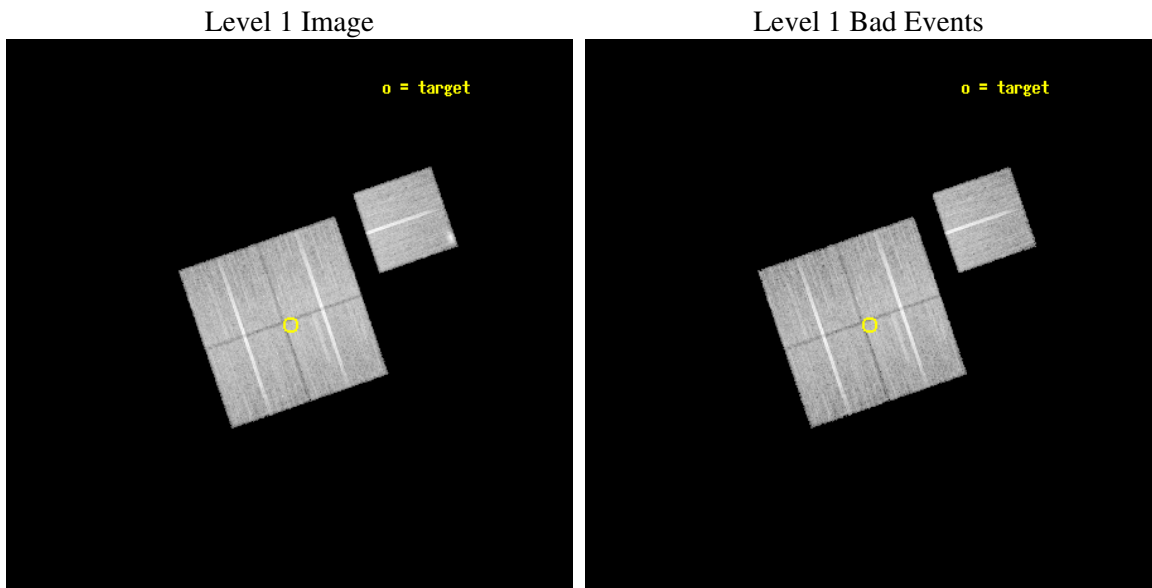
seq_num	800515
obs_id	5802
title	Chandra Observations of the DLS Shear-Selected Cluster Survey
observer	Prof. John Hughes
object	DLS J1356-1051
dtcycle	0
cycle	P
ra_targ	209.028333
dec_targ	-10.854444
ra_nom	209.03144792391
dec_nom	-10.851029065307
roll_nom	71.046833086854
revision	2
ontime	21070.658959329
livetime	20795.355288032
ontime0	21070.658979237
ontime1	21067.51798898
ontime2	21073.799959481
ontime3	21070.658959329
ontime6	21073.799959481
l2events	58984



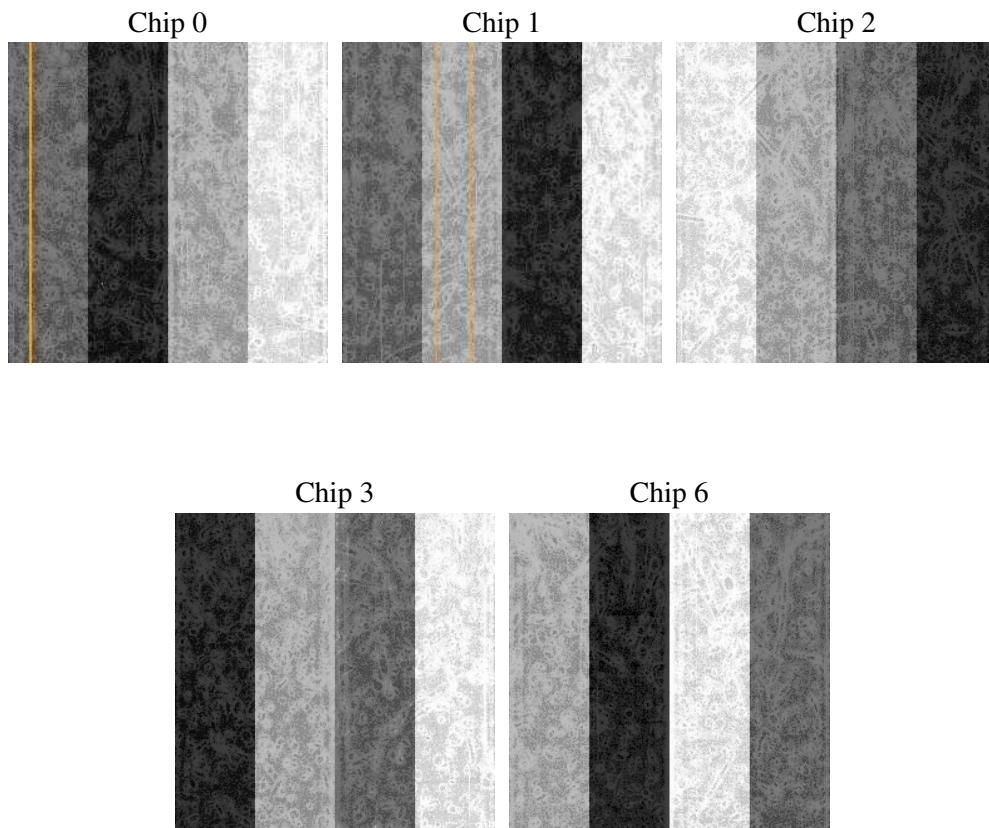
2 OBI

2.1 OBI

2.1.1 Images



2.1.2 Bias



2.1.3 Parameters

obi_num	0
ascdsver	7.6.7
caldbver	3.2.1
date	2006-02-27T10:33:54
revision	2

sched_exp_time	21300.000000
ontime	21073.049805492
ontime0	21073.0498254
ontime1	21069.908815205
ontime2	21076.190805644
ontime3	21073.049805492
ontime6	21076.190825522
l1events	652804

2.1.4 Events

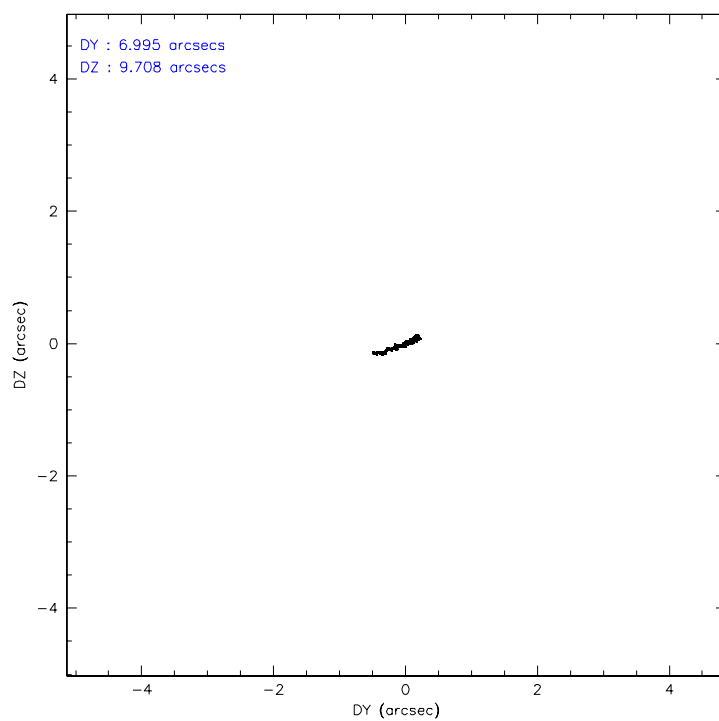
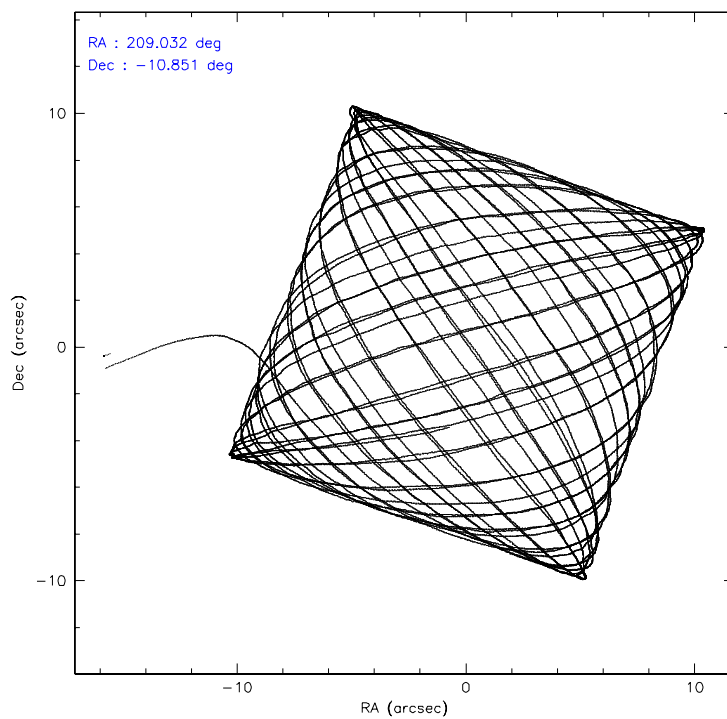
	ccd 0	ccd 1	ccd 2	ccd 3	ccd 6
level 1 events	124308	123116	137463	132428	135489
rejected events	110951	108148	124117	119740	119521
rejected %	89%	87%	90%	90%	88%

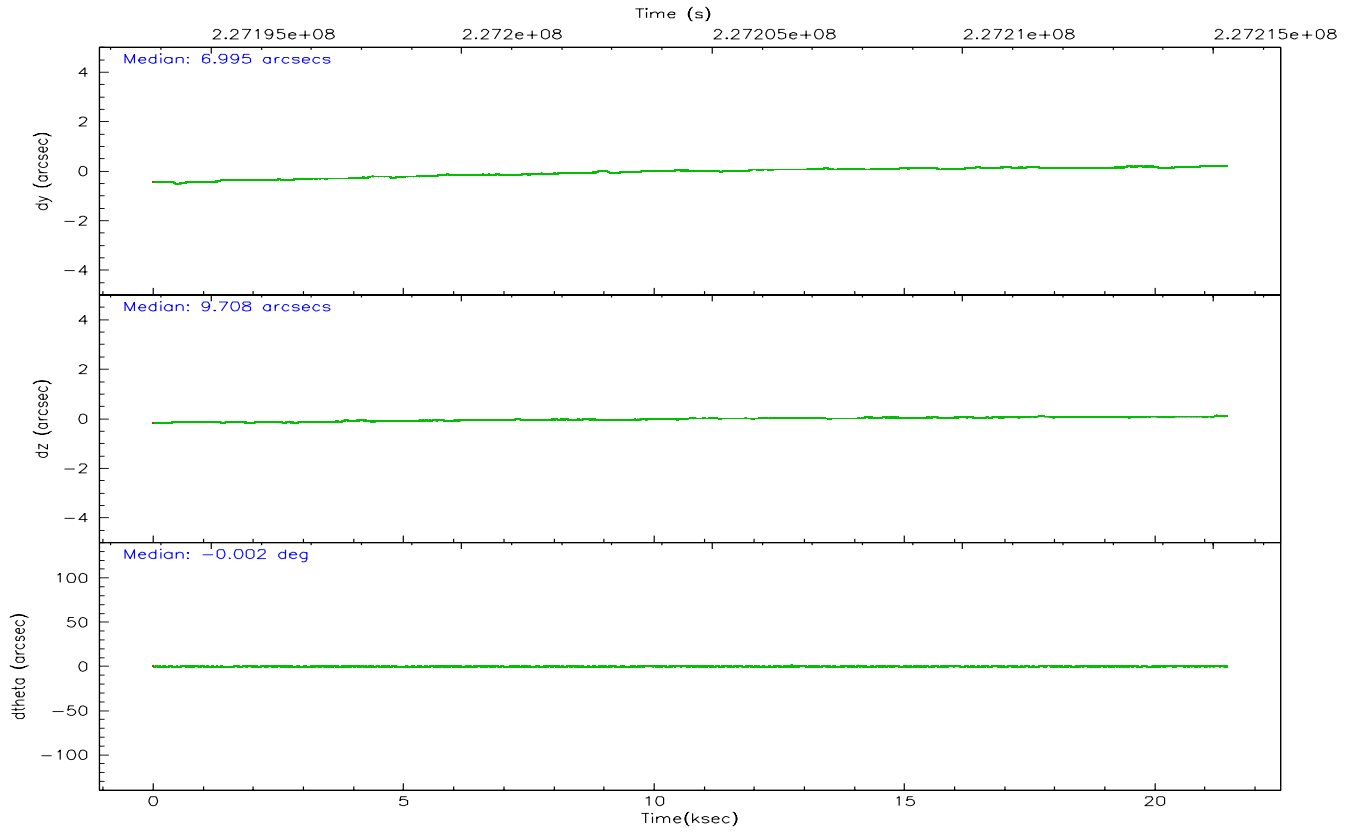
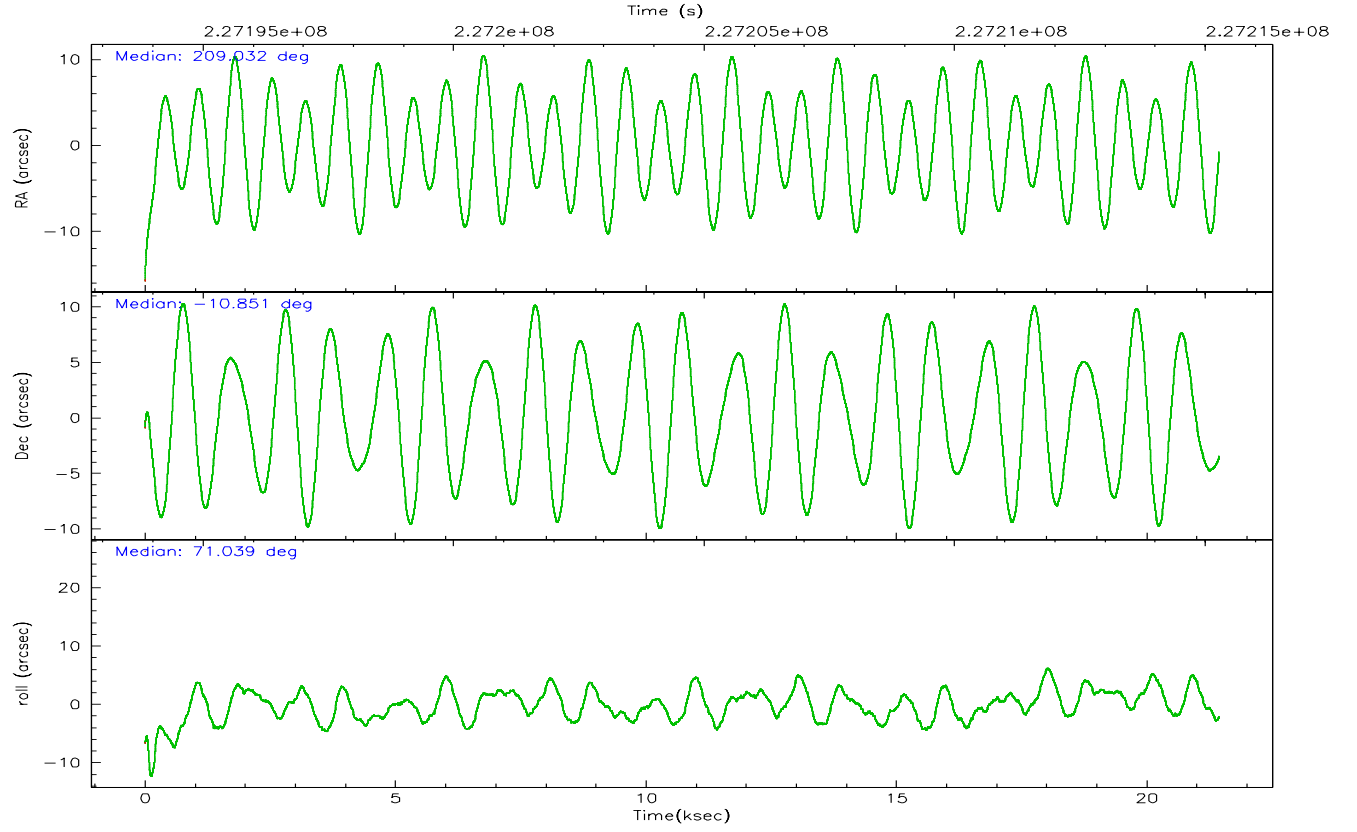
	ccd 0	ccd 1	ccd 2	ccd 3	ccd 6
grade 0 events	4749	5603	4970	4541	6749
	3%	4%	3%	3%	4%
grade 1 events	63	67	67	68	70
	0%	0%	0%	0%	0%
grade 2 events	3170	3322	3196	2713	3159
	2%	2%	2%	2%	2%
grade 3 events	1536	1633	1382	1478	1606
	1%	1%	1%	1%	1%
grade 4 events	1458	1563	1415	1429	1506
	1%	1%	1%	1%	1%
grade 5 events	4723	5006	4383	5237	5290
	3%	4%	3%	3%	3%
grade 6 events	2444	2854	2383	2528	2950
	1%	2%	1%	1%	2%
grade 7 events	106165	103068	119667	114434	114159
	85%	83%	87%	86%	84%

2.2 Compared Parameters

Parameter	Planned	Actual	Parameter	Planned	Actual
Instrument	ACIS	ACIS	Obspar format version number	6	6
Detector	ACIS-01236	ACIS-01236	Obspar file type	PREDICTED	ACTUAL
Grating	NONE	NONE	Obspar update status	NONE	UPDATED
Data mode	VFAINT	VFAINT	On-chip summing requested	N	N
Observation mode	POINTING	POINTING	Subarray requested	NONE	NONE
Pointing RA	209.036940	209.0314479239057	Alternating exposures requested	N	N
Pointing Dec	-10.877844	-10.85102906530721	Primary exposure time	0.000000	3.1
Pointing Roll	70.839173	71.04683308685354			
SIM focus pos (mm)	-0.782348	-0.7809083437167272			
SIM defocus (mm)	0	0.001439871863259334			
SIM translation stage pos (mm)	-233.592463	-233.5874344608287			
SIM translation stage offset (mm)	0	-0.005018542100998502			
Observation start time	227193984.184000	227192814.78285			
Observation start date	2005-03-14T13:25:20	2005-03-14T13:06:54			
Observation end time	227215284.184000	227216127.8964			
Observation end date	2005-03-14T19:20:20	2005-03-14T19:35:27			
Read mode	TIMED	TIMED			

2.3 Aspect



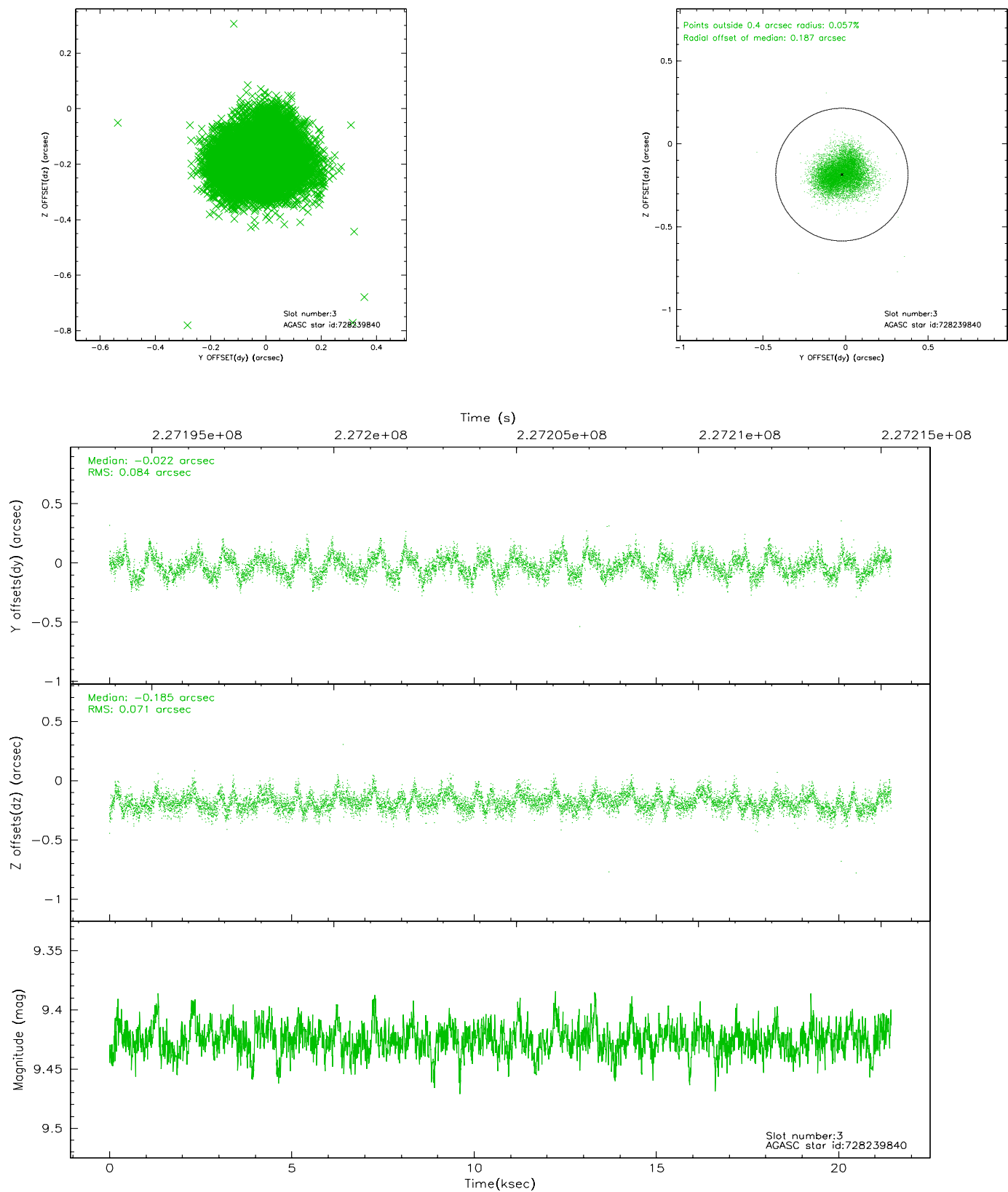


Slot Statistics

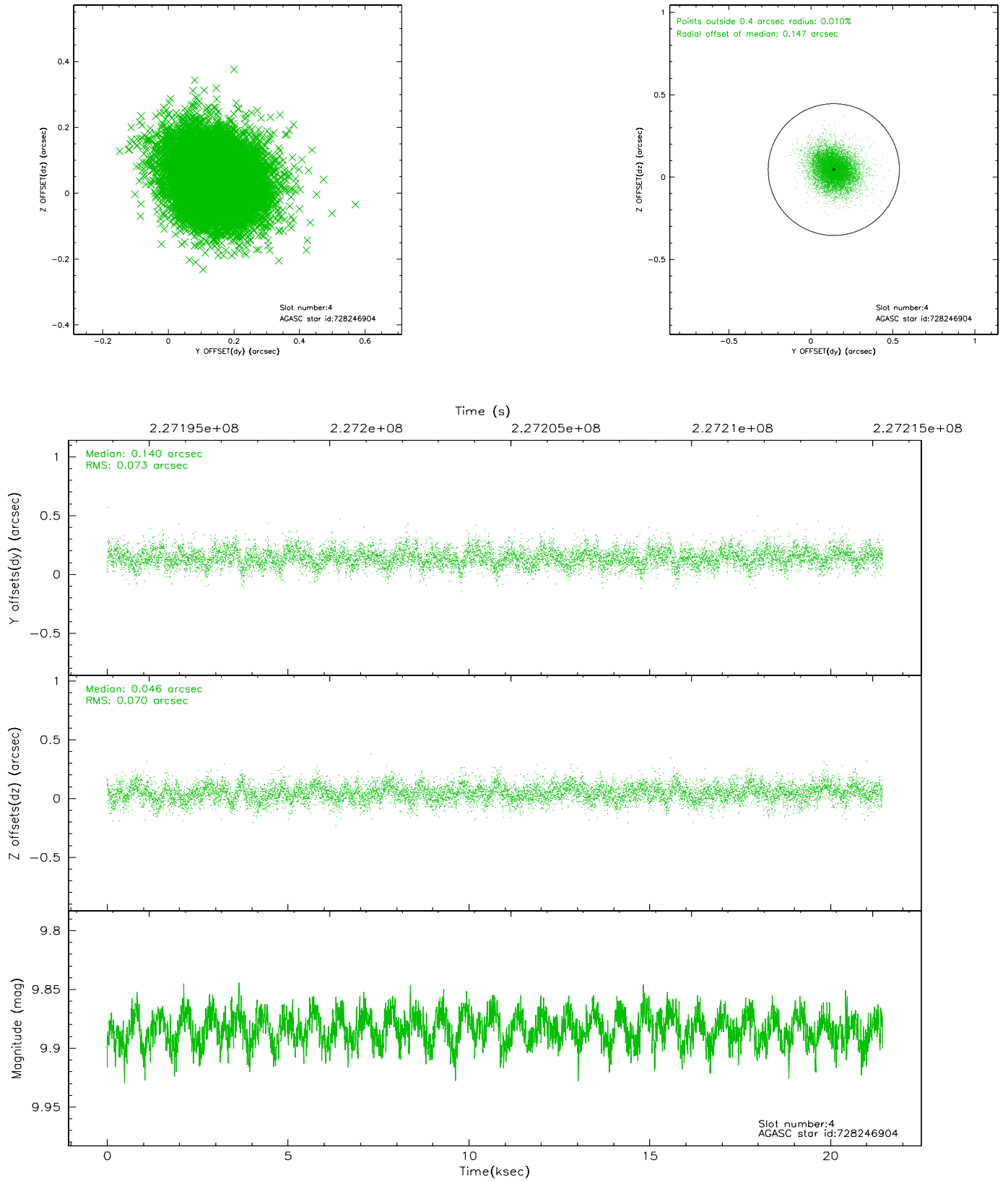
slot	status	id	mag	n_pts	med_dy	med_dz	dr1	dr2	ra	dec	mean_y	mean_z
0	FID	ACIS-I-1	7.24	5232	-0.017	0.049	0.009	0.016	0.000000	0.000000	932.72	-833.10
1	FID	ACIS-I-5	7.23	5232	-0.131	0.017	0.008	0.014	0.000000	0.000000	-1815.42	1064.26
2	FID	ACIS-I-6	7.26	5231	0.056	0.004	0.008	0.014	0.000000	0.000000	398.15	1708.95
3	GUIDE	728239840	9.43	10461	-0.022	-0.185	0.119	0.184	208.570433	-10.891623	-589.39	1541.01
4	GUIDE	728246904	9.88	10452	0.140	0.046	0.107	0.178	208.922180	-11.454653	-2094.11	-299.06
5	GUIDE	728370040	8.49	10448	-0.075	-0.007	0.079	0.124	209.435918	-10.924599	303.15	-1387.55
6	GUIDE	728372688	9.67	10458	-0.200	0.087	0.129	0.204	209.641052	-10.631360	1538.09	-1728.22
7	GUIDE	728378760	8.44	10459	0.151	0.057	0.083	0.134	209.447556	-11.536817	-1765.78	-2147.20

2.4 Star Slots

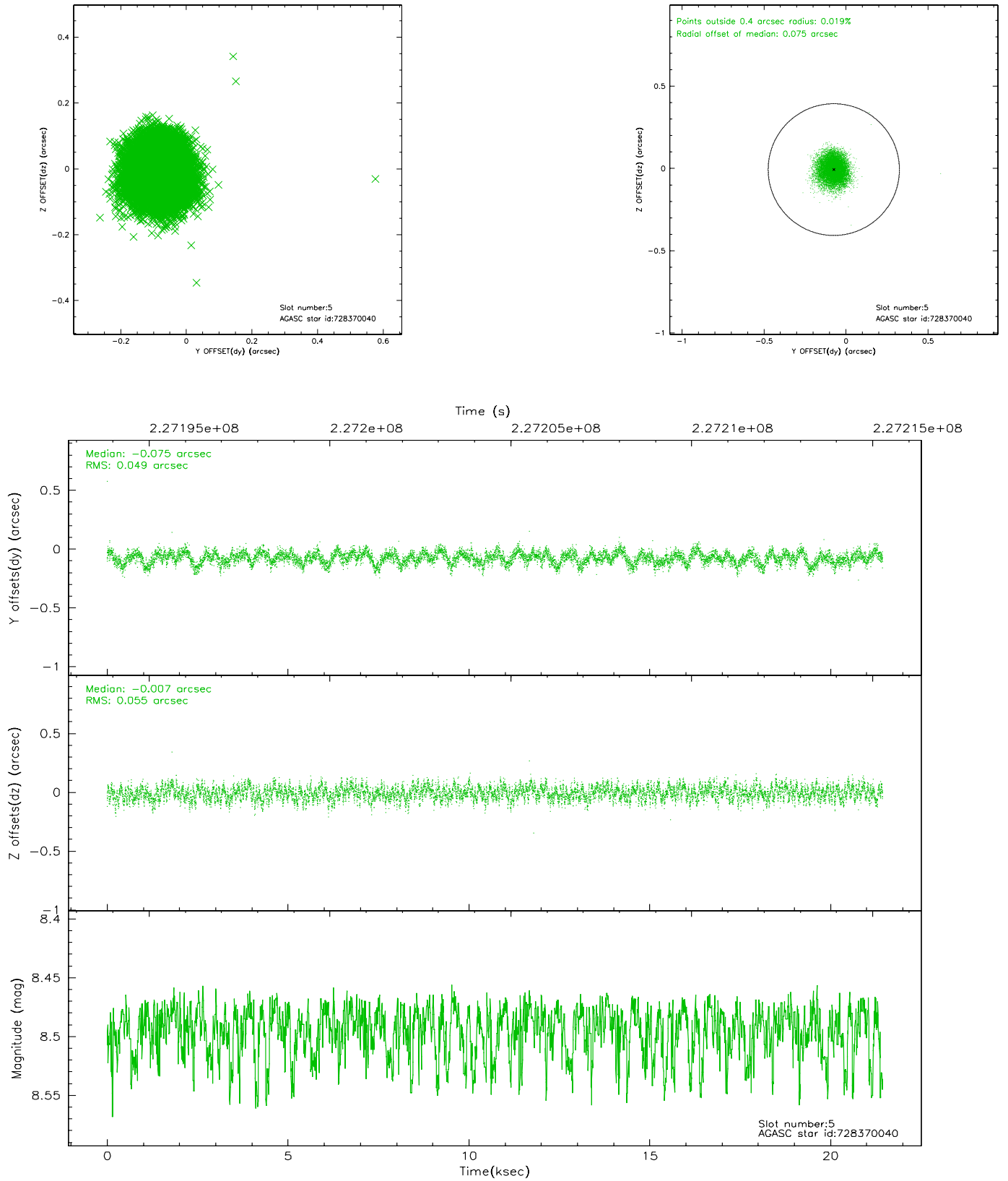
2.4.1 Slot 3



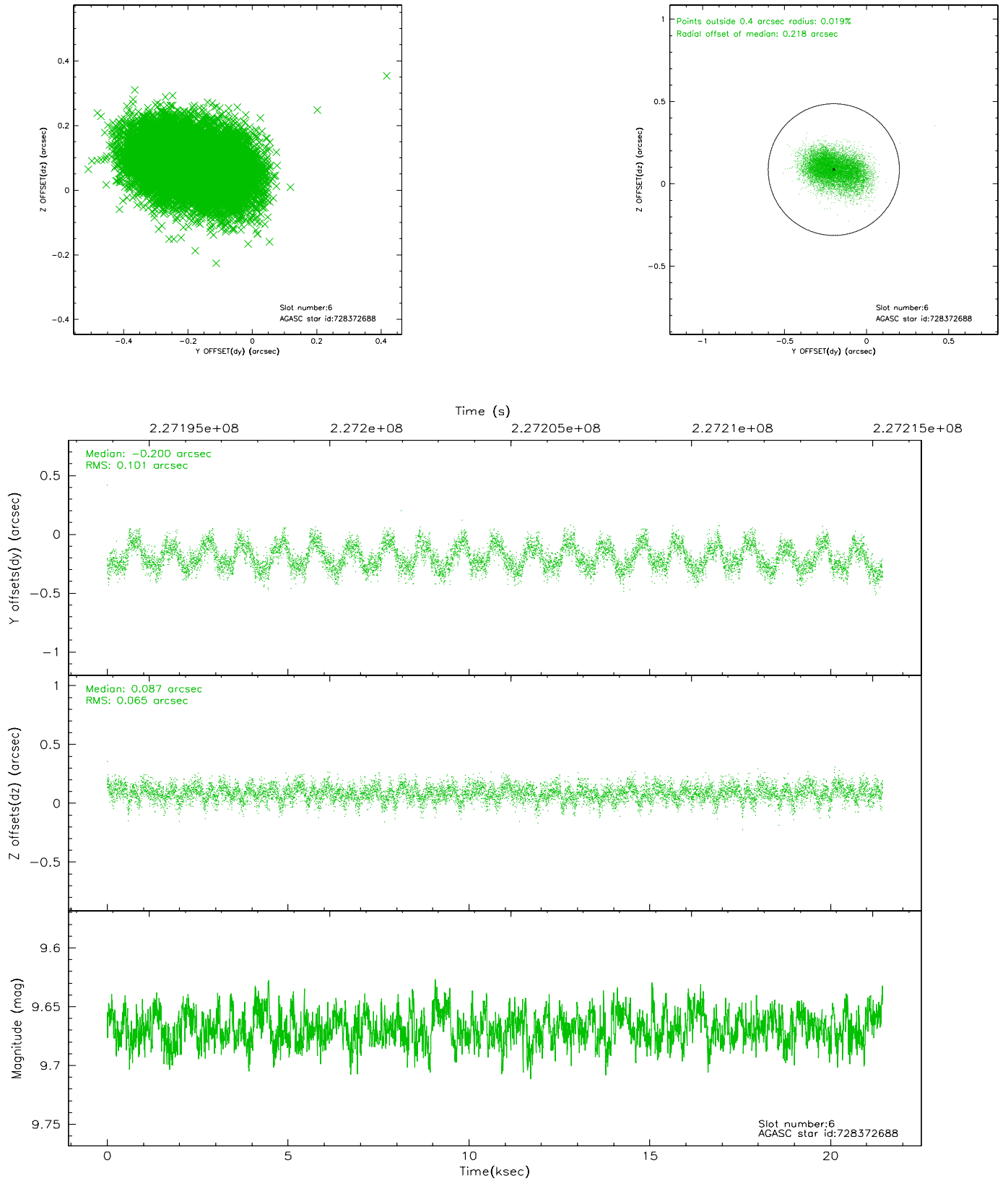
2.4.2 Slot 4



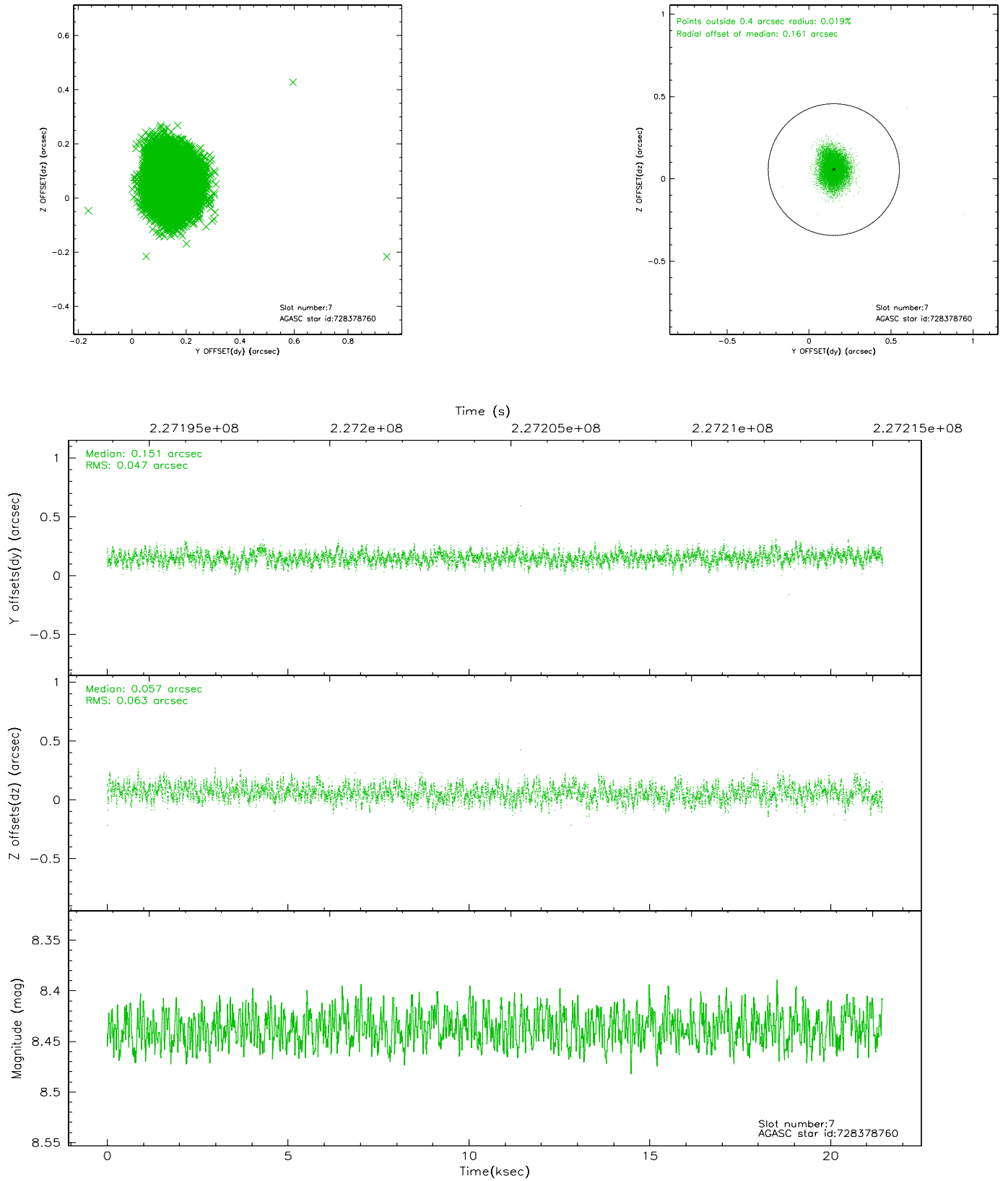
2.4.3 Slot 5



2.4.4 Slot 6

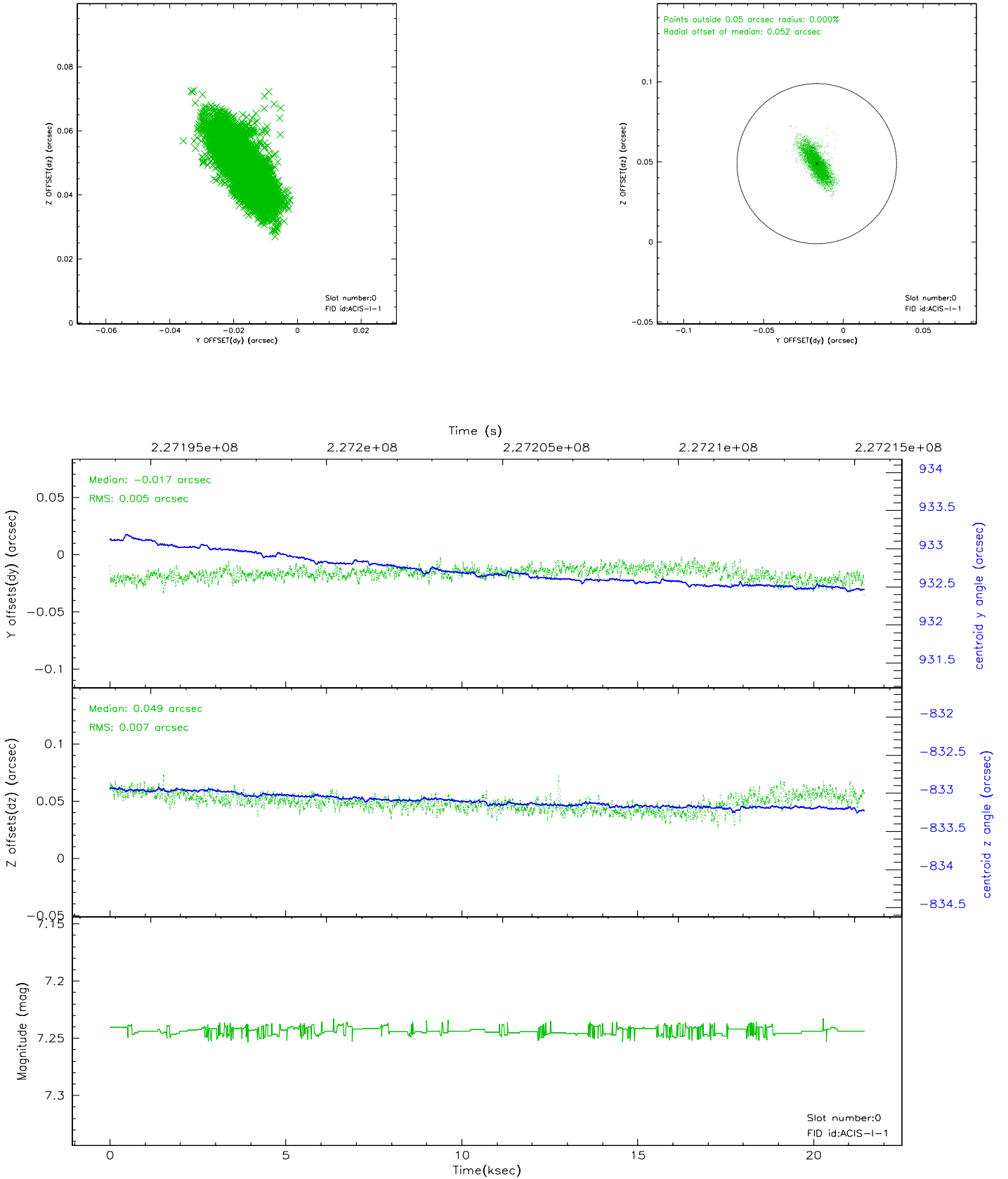


2.4.5 Slot 7

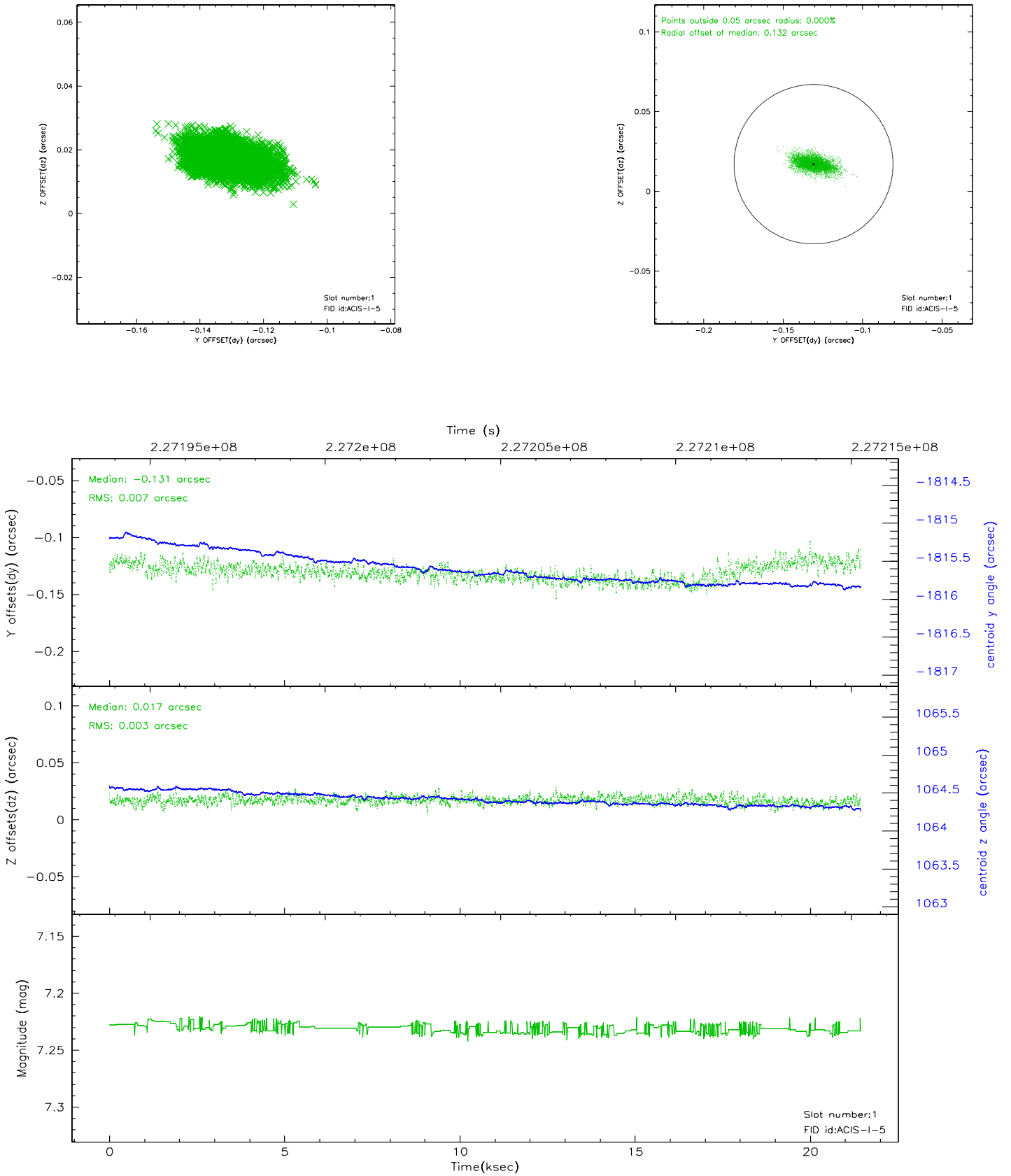


2.5 FID Slots

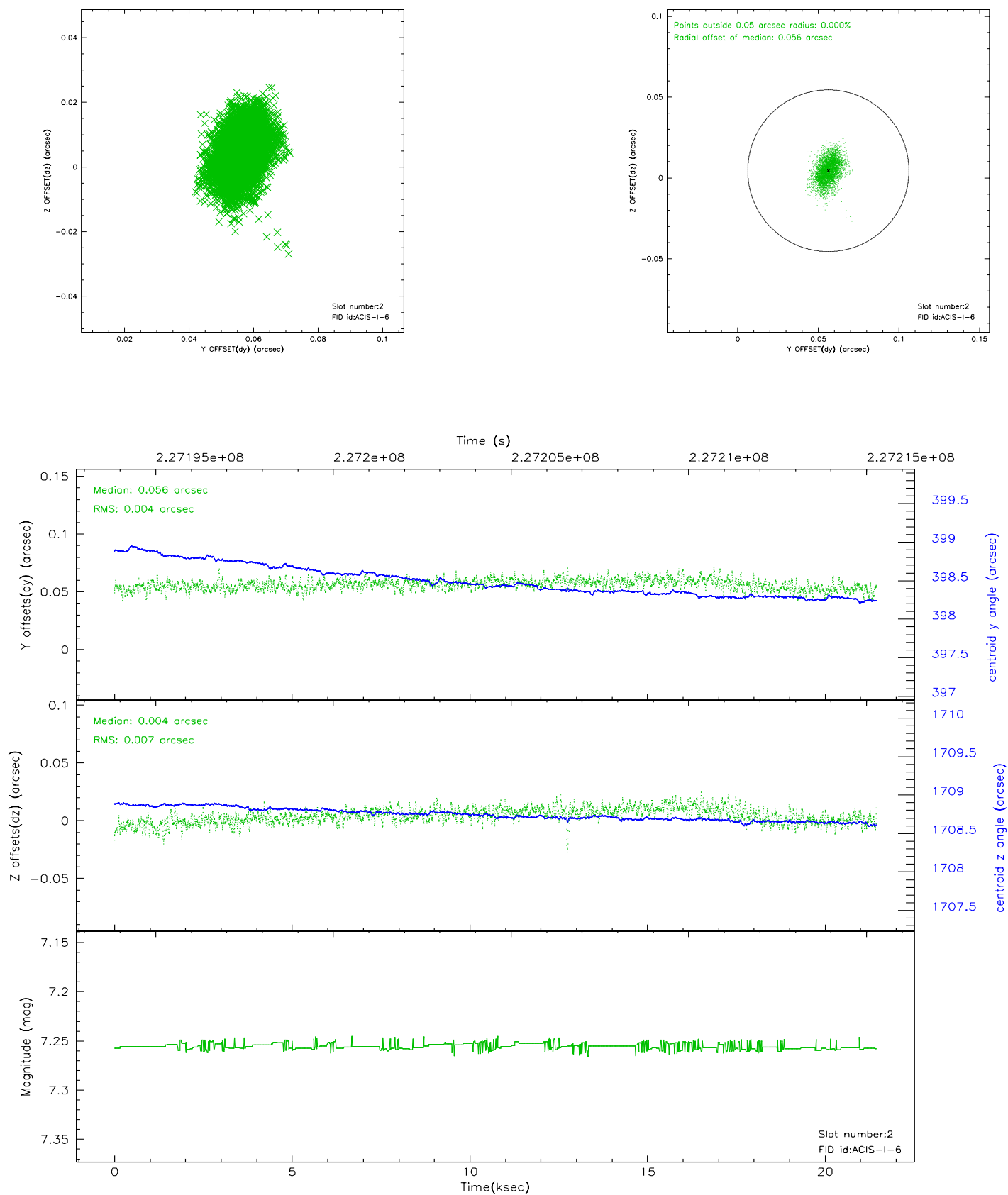
2.5.1 Slot 0



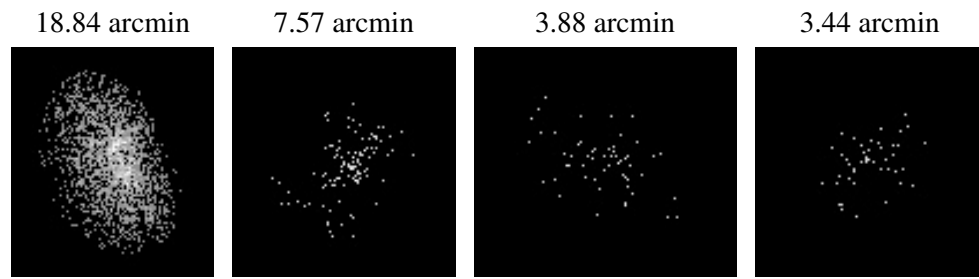
2.5.2 Slot 1



2.5.3 Slot 2



3 Point Sources



A Summary

A.1 Status

V&V Scientist	Jen Lauer
V&V Date (YYYY-MM-DD)	2006.02.27
V&V Edition	1
V&V Disposition and Status	OK
V&V Charge Time	21.07065

A.2 Comments