

# V&V Reference Report

## L2 ASCDS Version : 8.5.1.1

Observation 5801 - L2 Version 3  
Chandra X-Ray Center

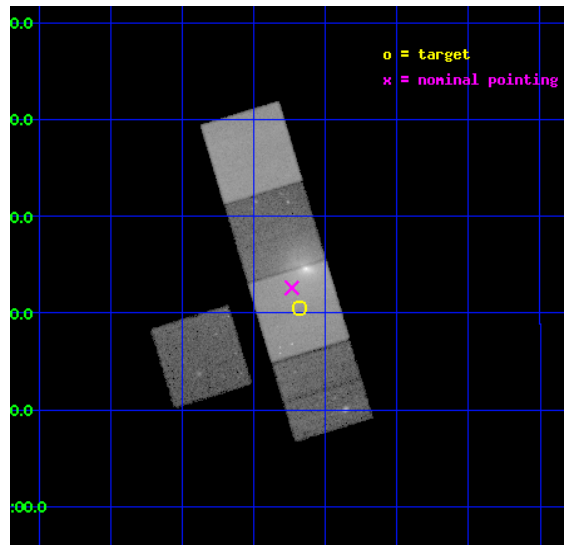
L2 Processing Date : Dec 30 2012

## Contents

<b>1</b>	<b>Front</b>	<b>2</b>
<b>2</b>	<b>OBI</b>	<b>3</b>
2.1	OBI . . . . .	3
2.1.1	Images . . . . .	3
2.1.2	Bias . . . . .	3
2.1.3	Parameters . . . . .	4
2.1.4	Events . . . . .	4
2.2	Compared Parameters . . . . .	5
2.3	Aspect . . . . .	6
2.4	Star Slots . . . . .	9
2.4.1	Slot 3 . . . . .	9
2.4.2	Slot 4 . . . . .	10
2.4.3	Slot 5 . . . . .	11
2.4.4	Slot 6 . . . . .	12
2.4.5	Slot 7 . . . . .	13
2.5	FID Slots . . . . .	14
2.5.1	Slot 0 . . . . .	14
2.5.2	Slot 1 . . . . .	15
2.5.3	Slot 2 . . . . .	16
<b>A</b>	<b>Summary</b>	<b>17</b>
A.1	Status . . . . .	17
A.2	Comments . . . . .	17

# 1 Front

seq_num	800514	Sequence number
obs_id	5801	Observation id
title	Intracluster Gas Velocity Tomography in RXJ0419.6+0225	Proposal ti
observer	Dr renato dupke	Principal investigator
object	RXJ0419.6+0225(OFF2)	Source name
dtcycle	0	&#160
cycle	P	events from which exps? Prim/Second/Both
ra_targ	64.920833	Observer's specified target RA [deg]
dec_targ	2.341667	Observer's specified target Dec [deg]
ra_nom	64.933358185312	Nominal RA [deg]
dec_nom	2.3769165176979	Nominal Dec [deg]
roll_nom	73.158776313323	Nominal Roll [deg]
revision	3	Processing version of data
ontime	45036.595388502	Sum of GTIs [s]
livetime	44448.159114292	Livetime [s]
ontime3	45033.331258327	Sum of GTIs [s]
ontime5	45036.554348499	Sum of GTIs [s]
ontime6	45027.090407372	Sum of GTIs [s]
ontime7	45036.595388502	Sum of GTIs [s]
ontime8	45036.431228489	Sum of GTIs [s]
l2events	551625	Number of level 2 events

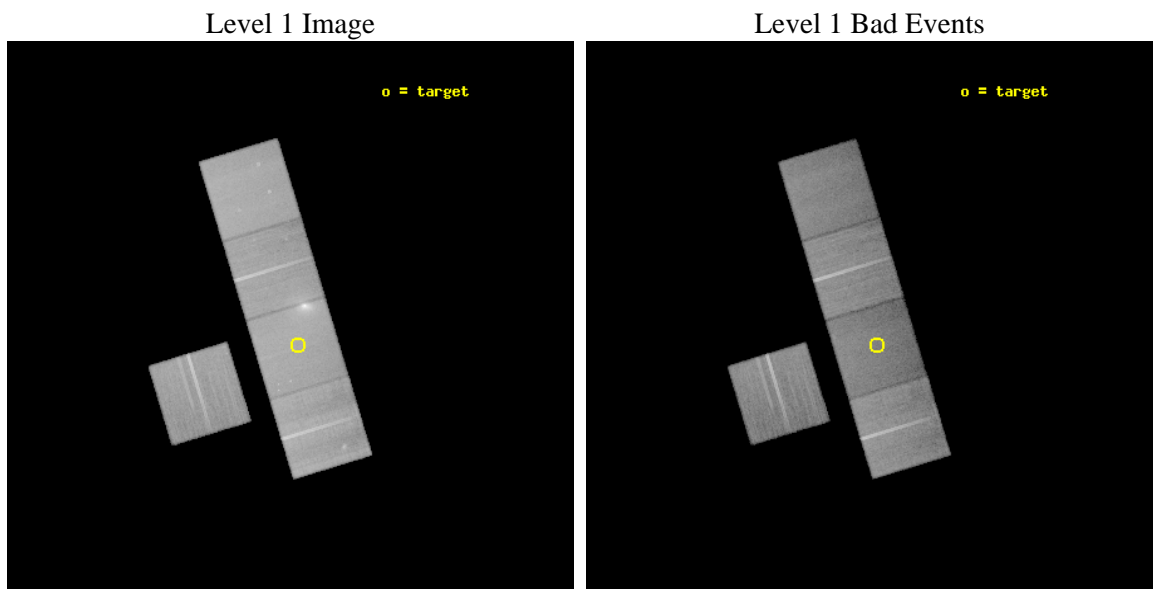




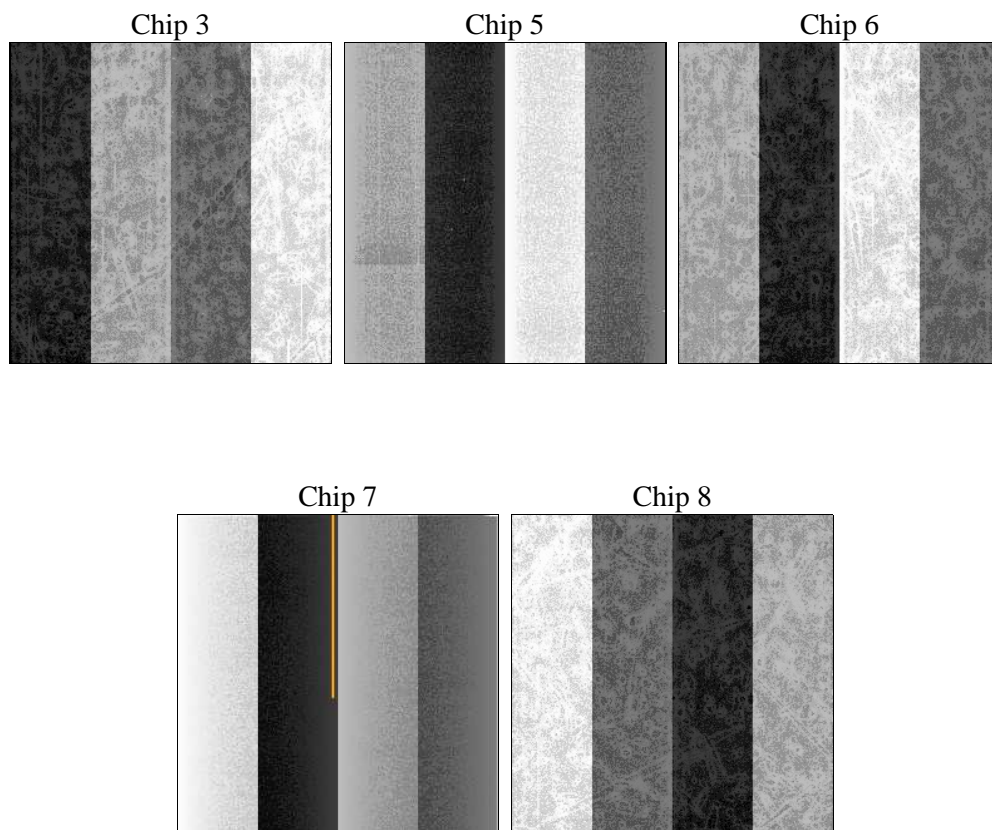
## 2 OBI

### 2.1 OBI

#### 2.1.1 Images



#### 2.1.2 Bias



### 2.1.3 Parameters

obi_num	0	Obi number	sched_exp_time	45000.000000	[s] Scheduled observation exposure time
ascdsver	8.5.1.1	Processing system revision	ontime	45036.595388502	Sum of GTIs [s]
caldbver	4.5.5	&#160	ontime3	45033.331258327	Sum of GTIs [s]
date	2012-12-31T00:10:53	Date and time of file creation	ontime5	45036.554348499	Sum of GTIs [s]
revision	3	Processing version of data	ontime6	45027.090407372	Sum of GTIs [s]
			ontime7	45036.595388502	Sum of GTIs [s]
			ontime8	45036.431228489	Sum of GTIs [s]
			l1events	1842074	Number of level 1 events

### 2.1.4 Events

	ccd 3	ccd 5	ccd 6	ccd 7	ccd 8		ccd 3	ccd 5	ccd 6	ccd 7	ccd 8
level 1 events	293049	400122	347937	420587	380379	grade 0 events	12176	15894	44206	37802	30754
rejected events	262841	203771	277706	182188	289440		4%	3%	12%	8%	8%
rejected %	89%	50%	79%	43%	76%	grade 1 events	164	380	254	273	287
							0%	0%	0%	0%	0%
						grade 2 events	6010	58020	10117	54435	19628
							2%	14%	2%	12%	5%
						grade 3 events	3262	9174	4473	25223	9325
							1%	2%	1%	5%	2%
						grade 4 events	3195	8803	4291	24627	8948
							1%	2%	1%	5%	2%
						grade 5 events	11494	32110	12192	35403	17209
							3%	8%	3%	8%	4%
						grade 6 events	5571	104481	7158	96354	22285
							1%	26%	2%	22%	5%
						grade 7 events	251177	171260	265246	146470	271943
							85%	42%	76%	34%	71%

## 2.2 Compared Parameters

Parameter	Planned	Actual	Parameter	Planned	Actual
Instrument	ACIS	ACIS	Obspar format version number	7	7
Detector	ACIS-35678	ACIS-35678	Obspar file type	PREDICTED	ACTUAL
Grating	NONE	NONE	Obspar update status	NONE	UPDATED
Data mode	VFAINT	VFAINT	Number of optional ACIS chips dropped	0	0
Observation mode	POINTING	POINTING	On-chip summing requested	N	N
[deg] Pointing RA	64.939925	64.93335818531219	Subarray requested	NONE	NONE
[deg] Pointing Dec	2.350475	2.376916517697891	Alternating exposures requested	N	N
[deg] Pointing Roll	73.001877	73.15877631332282	[s] Primary exposure time	0.000000	3.1
[mm] SIM focus pos	-0.684267	-0.6828225247311905			
[mm] SIM defocus	0	0.001444936568705701			
[mm] SIM translation stage pos	-190.132523	-190.1400660498719			
[mm] SIM translation stage offset	0	0.00754346686406393			
[s] Observation start time (MET)	246566487.184000	246565127.06853			
Observation start date	2005-10-24T18:40:23	2005-10-24T18:18:47			
[s] Observation end time (MET)	246611487.184000	246612060.79569			
Observation end date	2005-10-25T07:10:23	2005-10-25T07:21:00			
Read mode	TIMED	TIMED			

## 2.3 Aspect

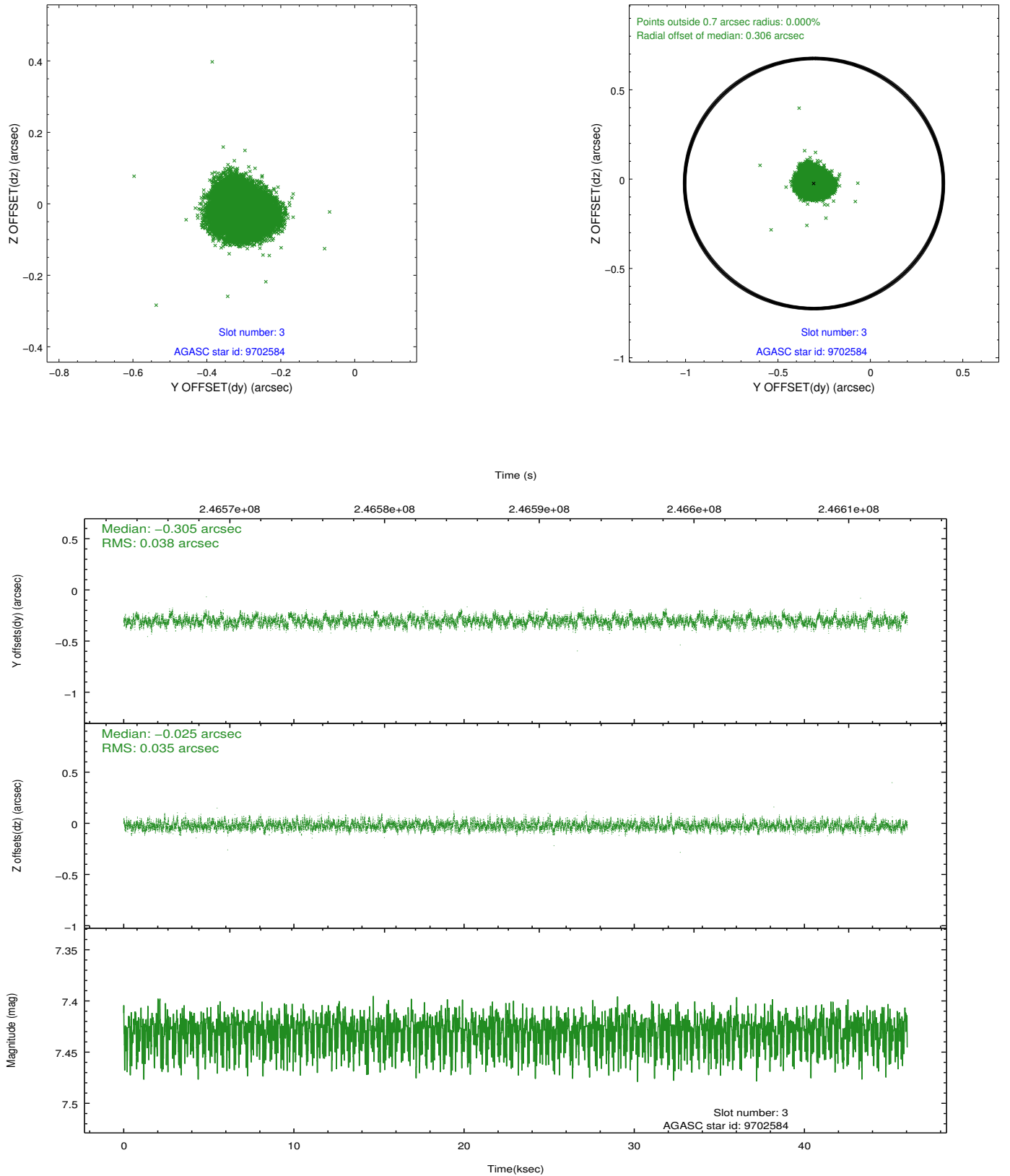


### Slot Statistics

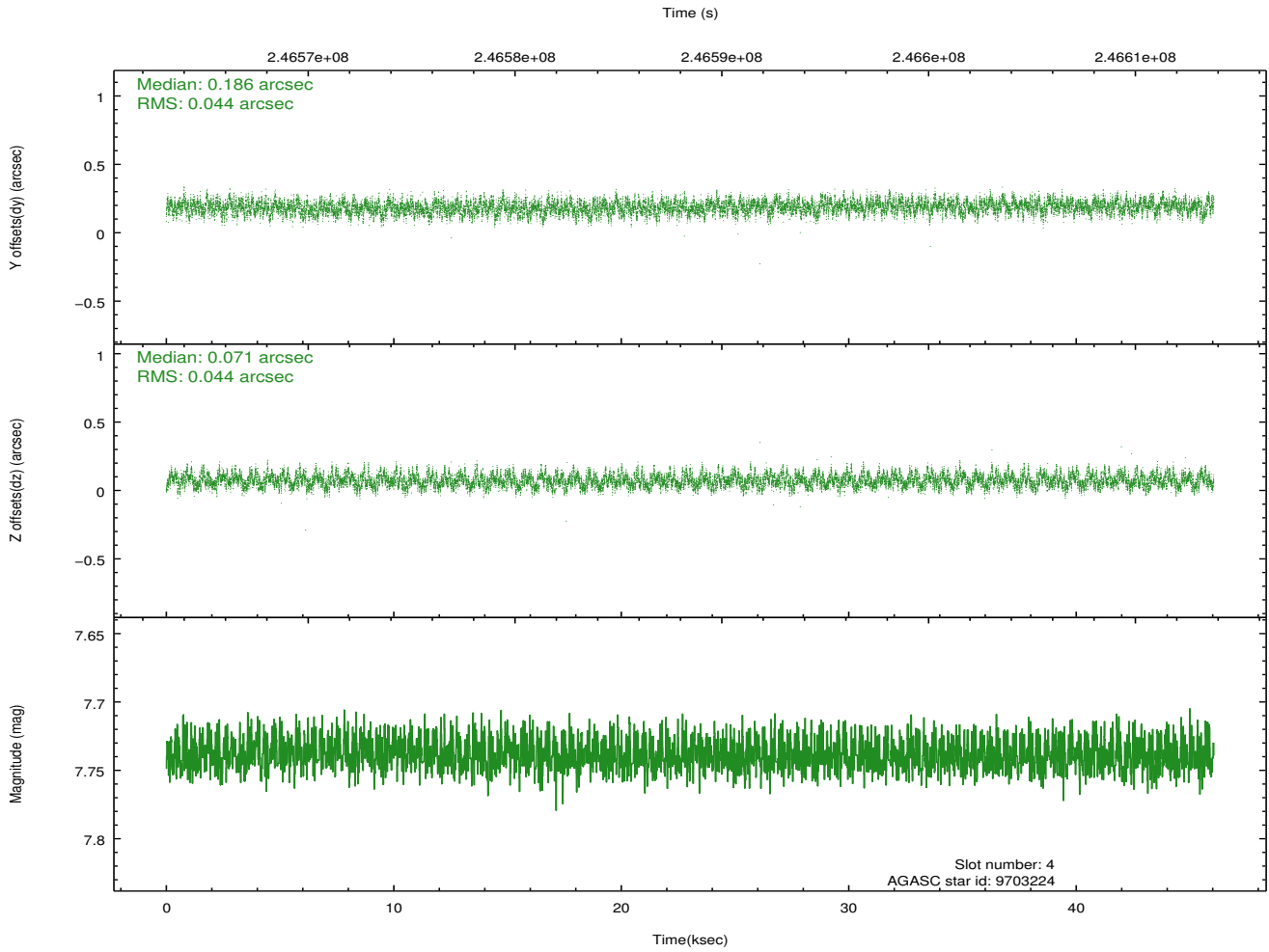
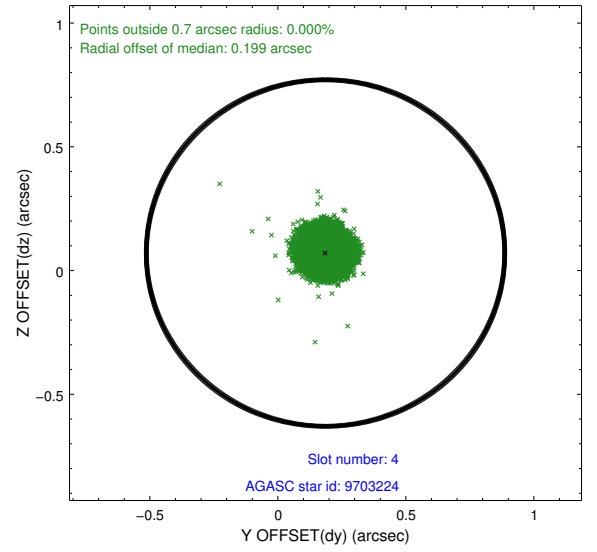
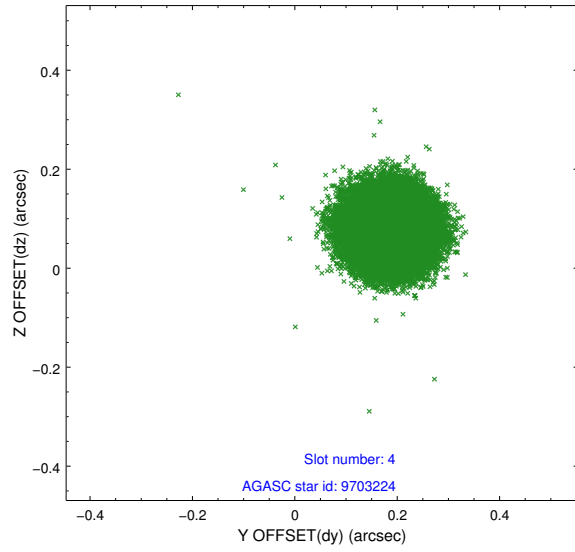
slot	status	id	mag	n_pts	med_dy	med_dz	dr1	dr2	ra	dec	mean_y	mean_z
0	FID	ACIS-S-1	7.19	11232	0.036	-0.035	0.012	0.020	0.000000	0.000000	936.07	-1726.88
1	FID	ACIS-S-5	7.24	11232	-0.076	0.024	0.007	0.013	0.000000	0.000000	-1813.05	170.71
2	FID	ACIS-S-6	7.35	11230	0.019	0.023	0.012	0.020	0.000000	0.000000	401.60	814.69
3	GUIDE	9702584	7.43	22462	-0.305	-0.025	0.056	0.087	64.640935	2.470534	98.72	1154.80
4	GUIDE	9703224	7.74	22459	0.186	0.071	0.068	0.105	64.728794	1.773459	-2208.43	119.23
5	GUIDE	9830984	7.07	22464	-0.030	0.208	0.074	0.126	65.442956	2.390106	665.09	-1688.53
6	GUIDE	10093656	8.31	22461	0.023	0.011	0.061	0.098	64.910383	2.992173	2178.17	776.92
7	GUIDE	10092712	7.08	22464	0.118	-0.274	0.069	0.109	64.322459	2.529688	-31.79	2312.29

## 2.4 Star Slots

### 2.4.1 Slot 3

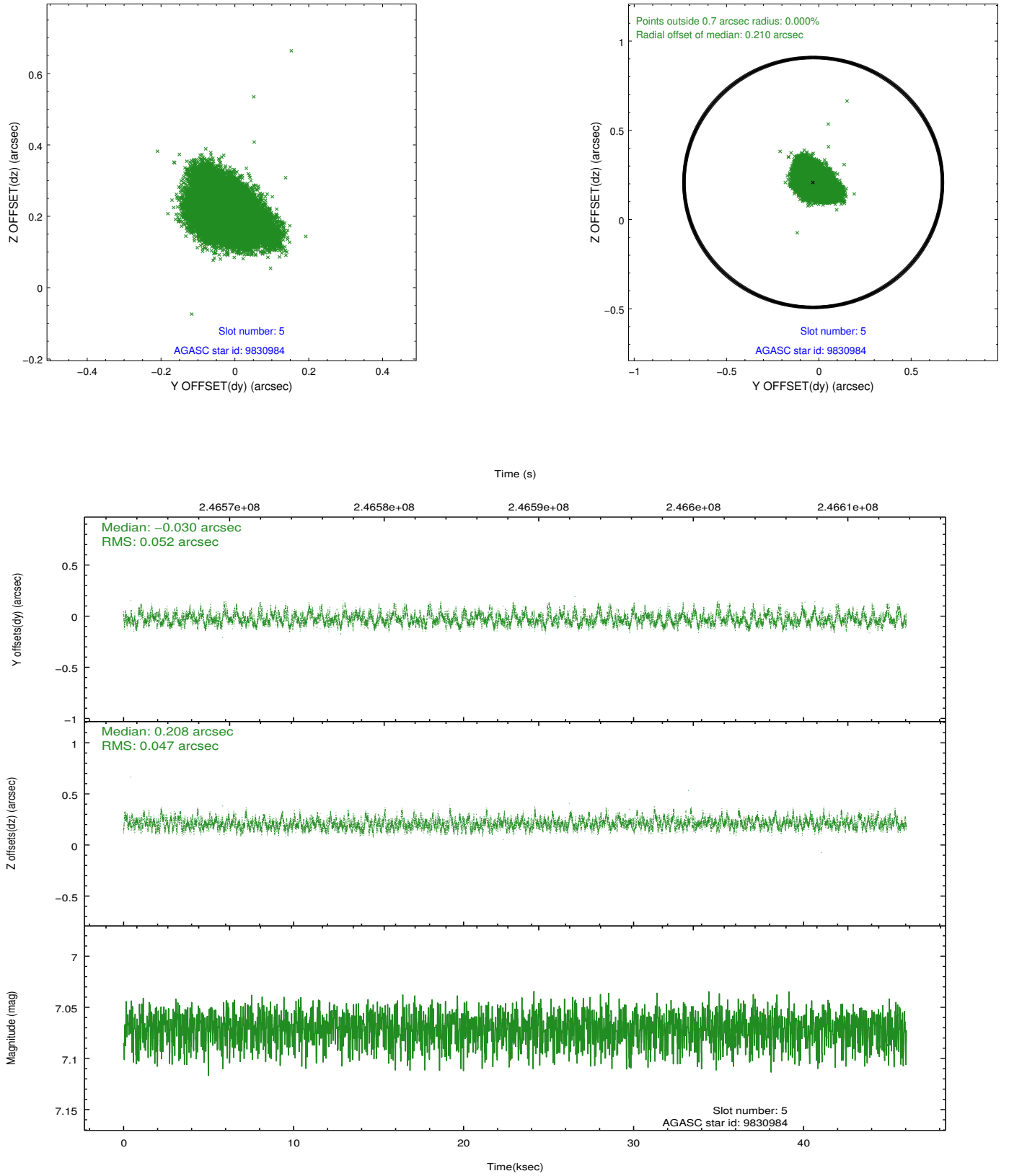


## 2.4.2 Slot 4

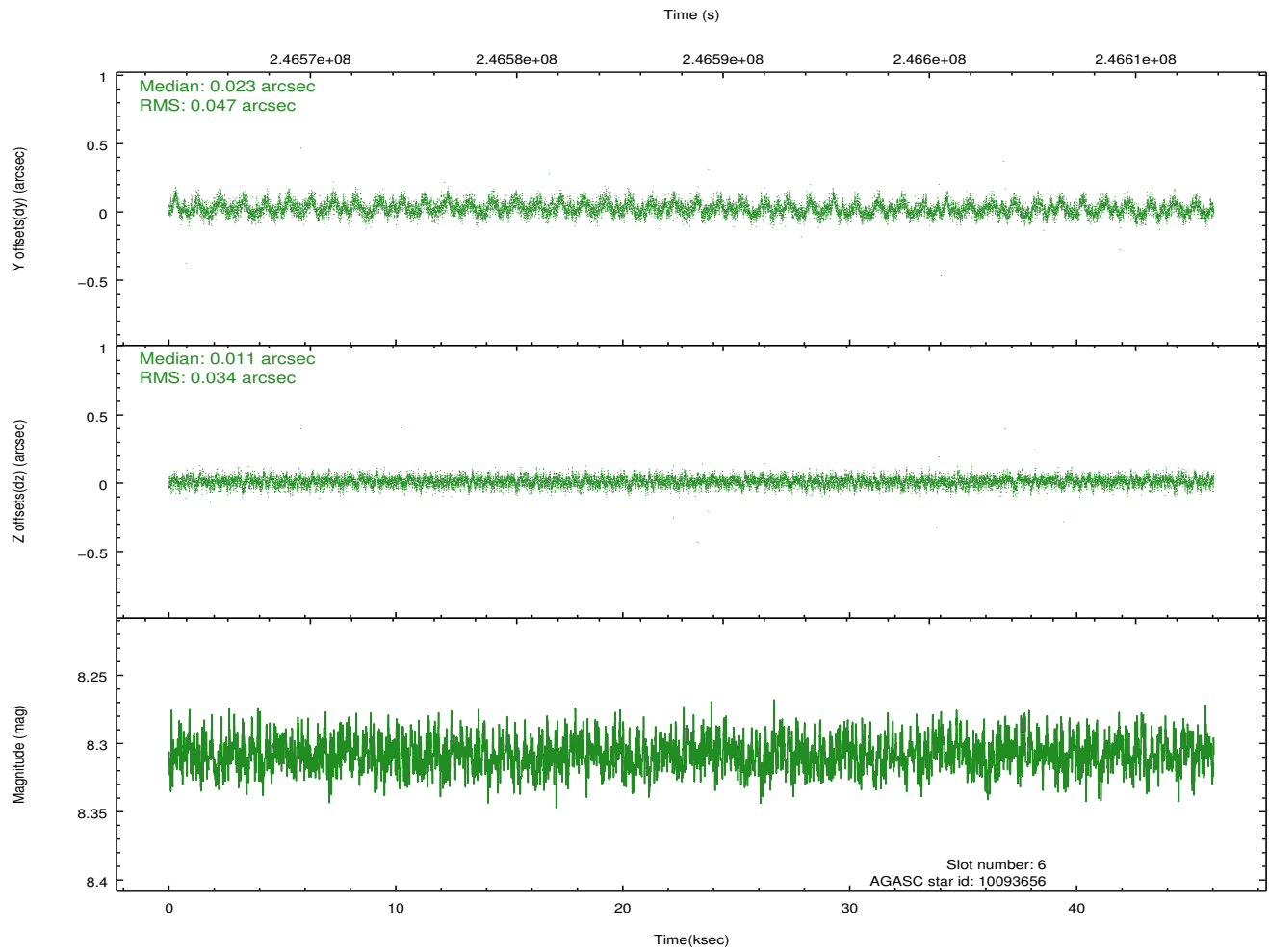
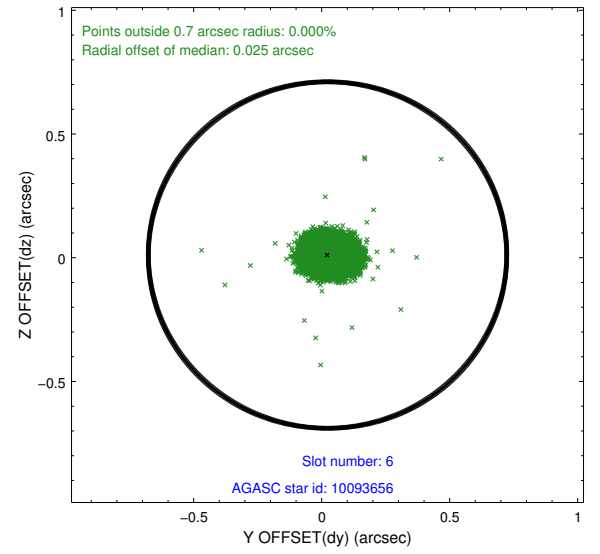
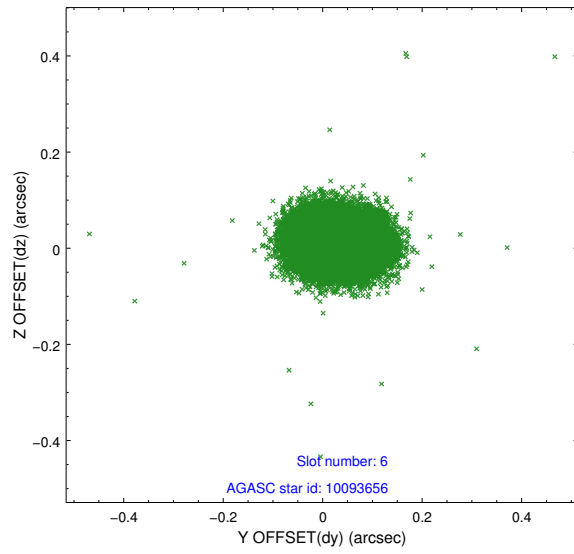




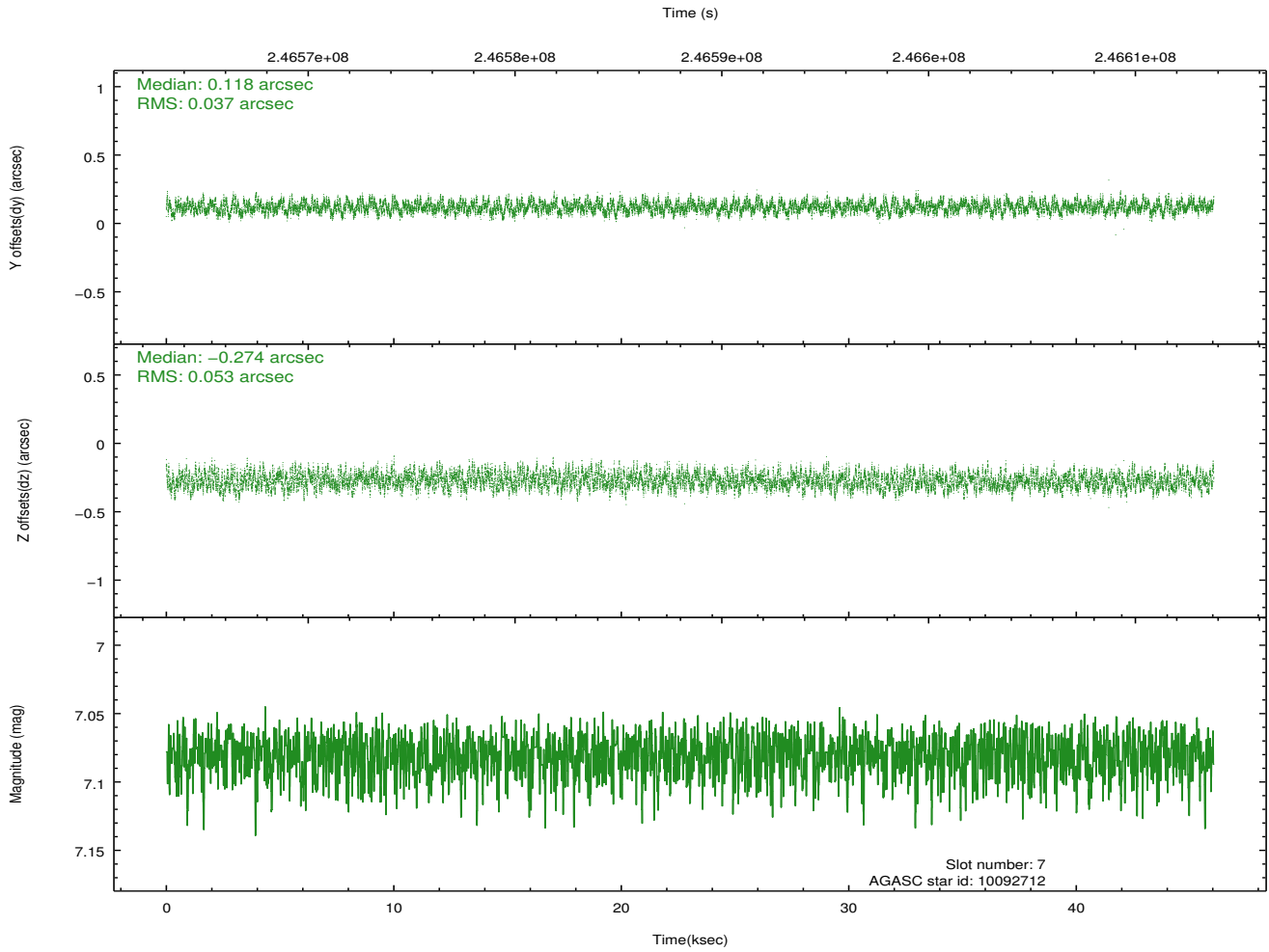
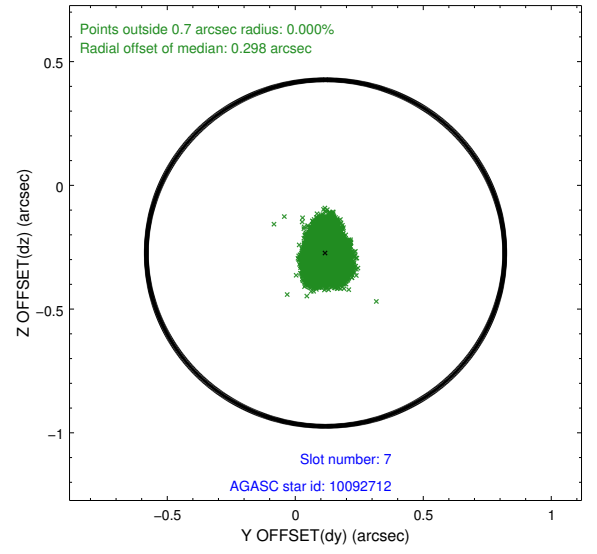
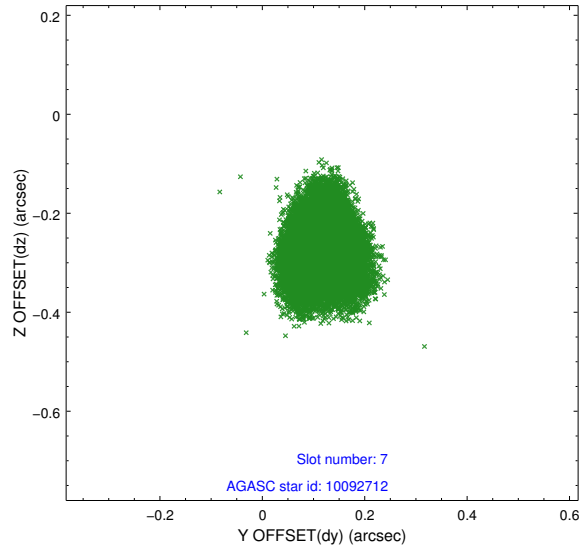
### 2.4.3 Slot 5



## 2.4.4 Slot 6

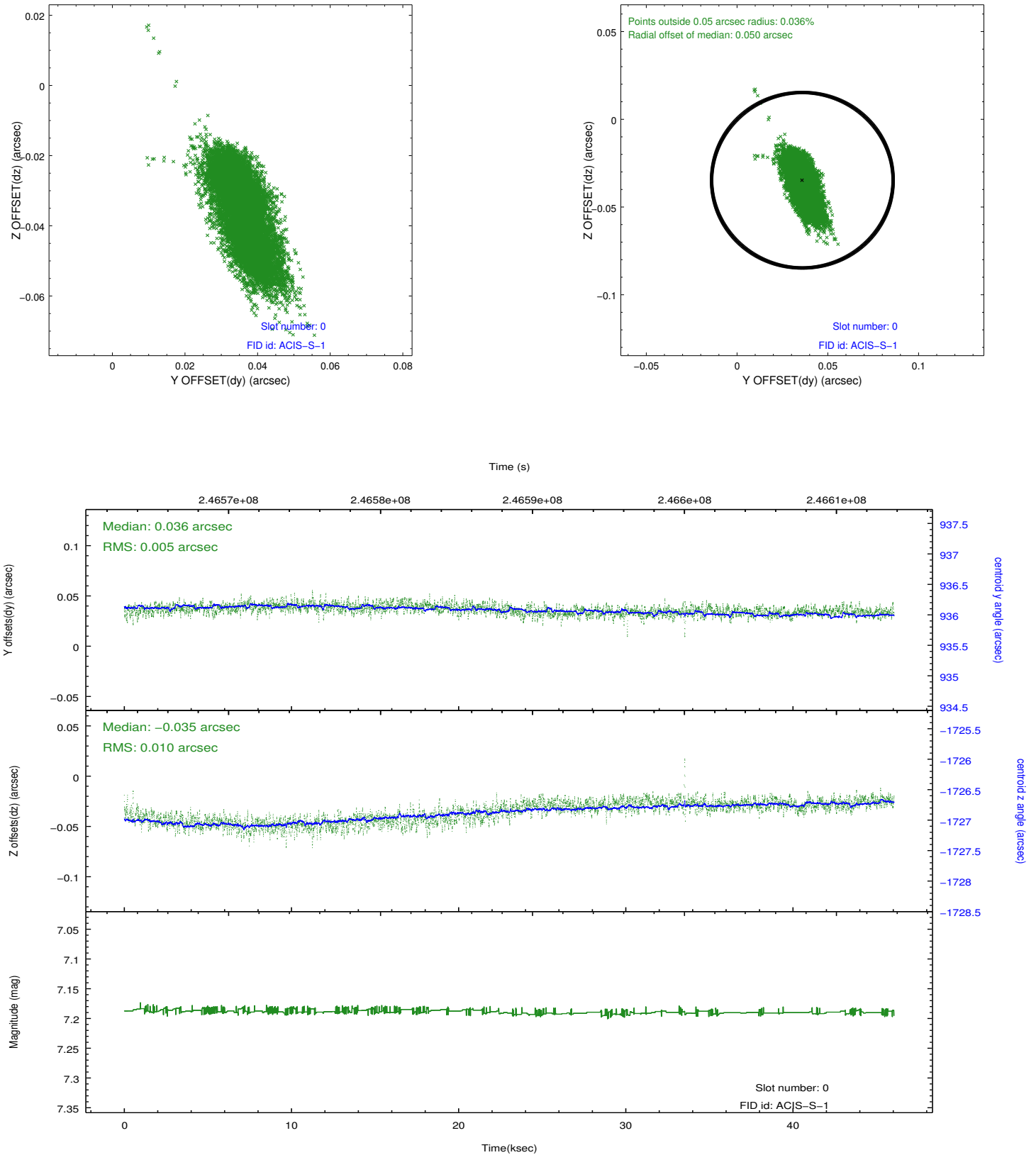


## 2.4.5 Slot 7

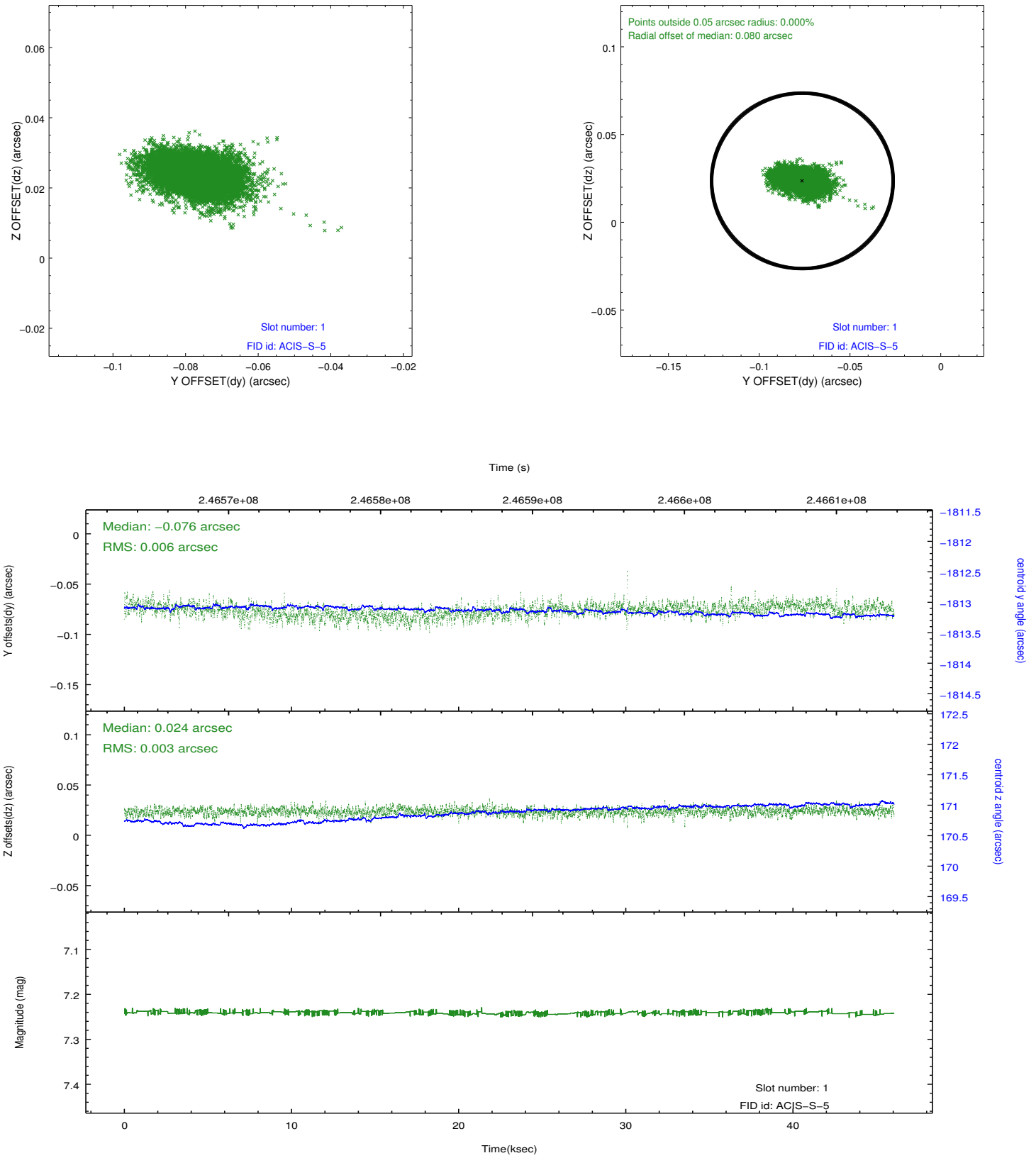


## 2.5 FID Slots

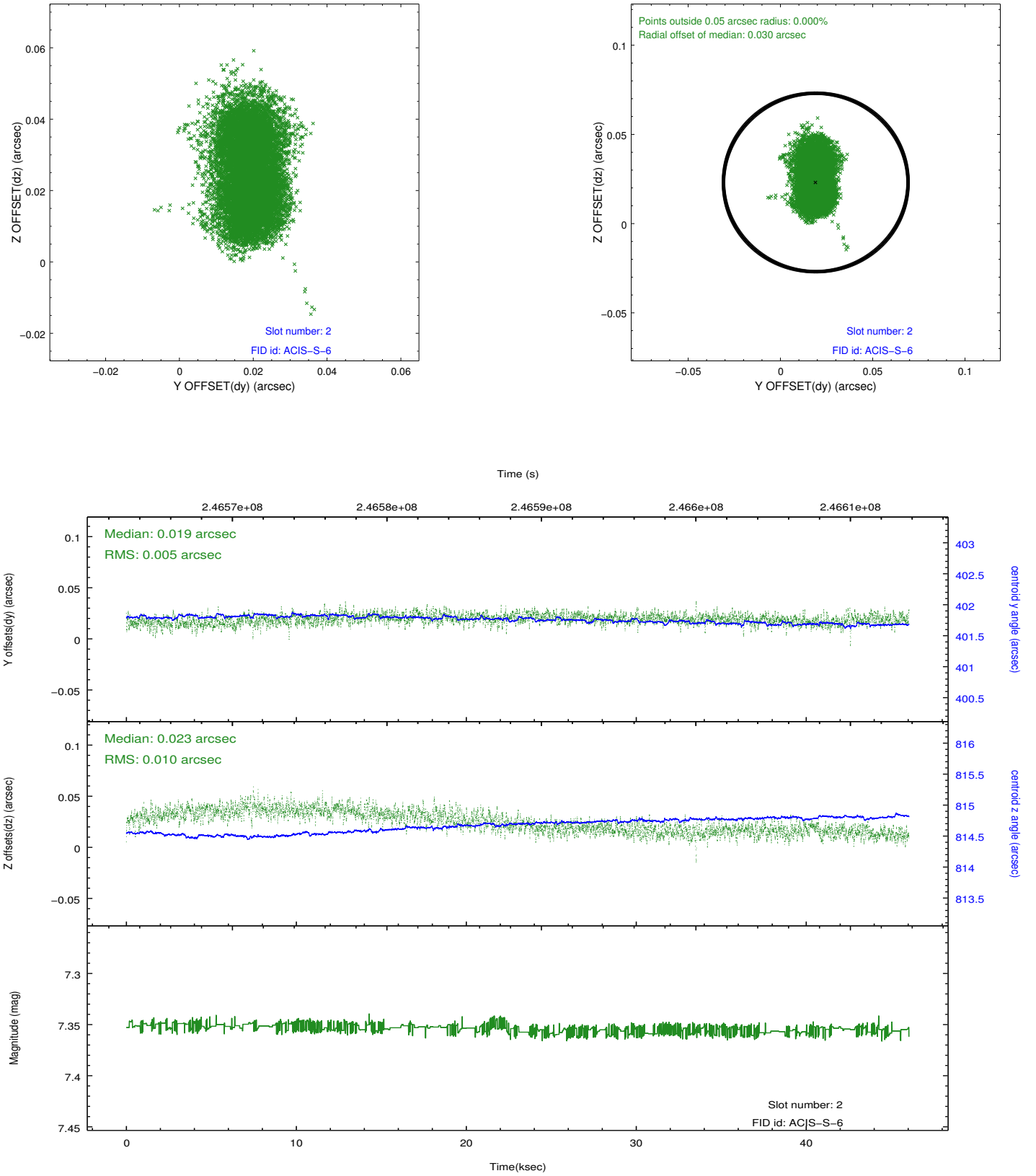
### 2.5.1 Slot 0



## 2.5.2 Slot 1



### 2.5.3 Slot 2



## A Summary

### A.1 Status

V&V Scientist	Jen Lauer
V&V Date (YYYY-MM-DD)	2013.01.28
V&V Edition	1
V&V Disposition and Status	OK
V&V Charge Time	45.03679

### A.2 Comments