

# V&V Reference Report

## L2 ASCDS Version : 7.6.7

Observation 5789 - L2 Version 002  
Chandra X-Ray Center

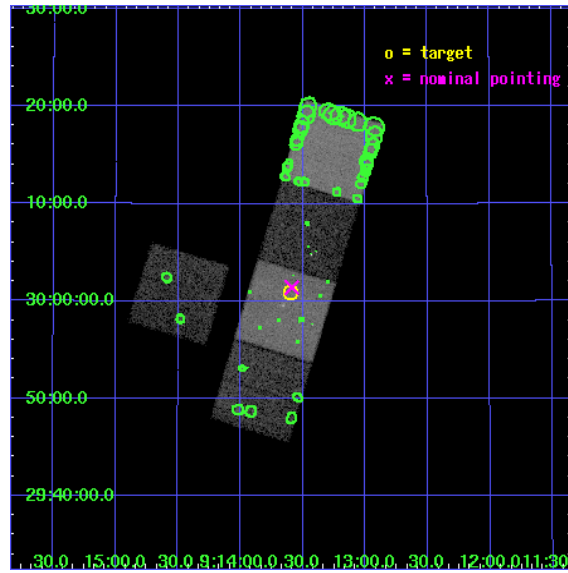
L2 Processing Date: Feb 17 2006

## Contents

<b>1</b>	<b>Front</b>	<b>2</b>
<b>2</b>	<b>OBI</b>	<b>3</b>
2.1	OBI . . . . .	3
2.1.1	Images . . . . .	3
2.1.2	Bias . . . . .	3
2.1.3	Parameters . . . . .	4
2.1.4	Events . . . . .	4
2.2	Compared Parameters . . . . .	5
2.3	Aspect . . . . .	6
2.4	Star Slots . . . . .	9
2.4.1	Slot 3 . . . . .	9
2.4.2	Slot 4 . . . . .	10
2.4.3	Slot 5 . . . . .	11
2.4.4	Slot 6 . . . . .	12
2.4.5	Slot 7 . . . . .	13
2.5	FID Slots . . . . .	14
2.5.1	Slot 0 . . . . .	14
2.5.2	Slot 1 . . . . .	15
2.5.3	Slot 2 . . . . .	16
<b>3</b>	<b>Point Sources</b>	<b>17</b>
<b>A</b>	<b>Summary</b>	<b>18</b>
A.1	Status . . . . .	18
A.2	Comments . . . . .	18

# 1 Front

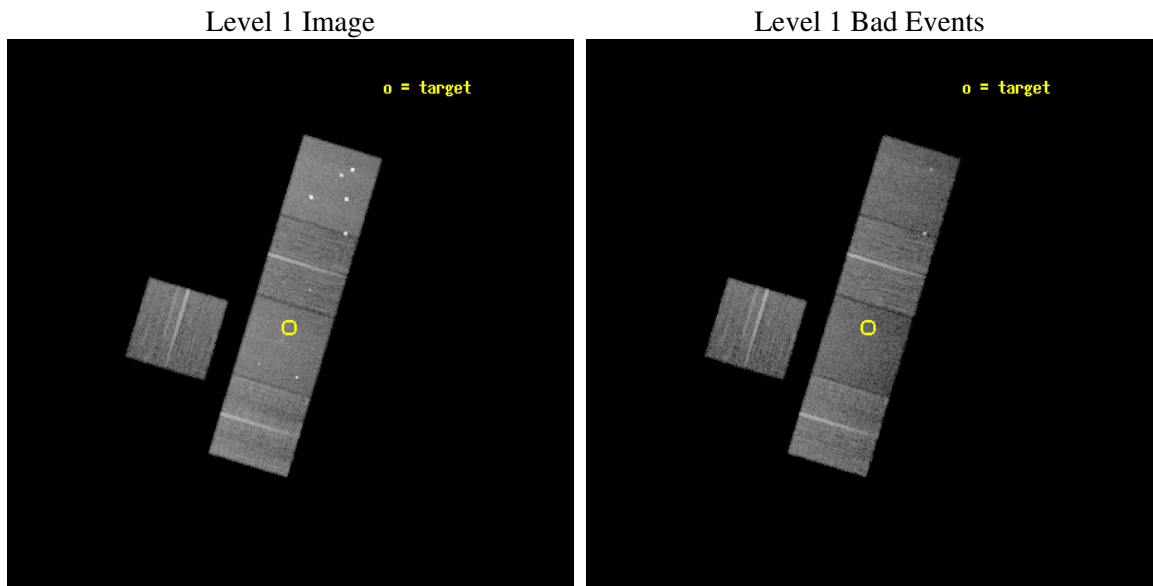
seq_num	800502
obs_id	5789
title	HI-Deficient Ultracompact Groups
observer	Prof Trevor Ponman
object	HCG 37
dtcycle	0
cycle	P
ra_targ	138.398333
dec_targ	30.014167
ra_nom	138.39704216771
dec_nom	30.023758121292
roll_nom	106.83403896511
revision	2
ontime	18169.099965066
livetime	17931.707298125
ontime3	18162.817994565
ontime5	18169.099965066
ontime6	18165.958974808
ontime7	18169.099965066
ontime8	18169.099965066
l2events	152860



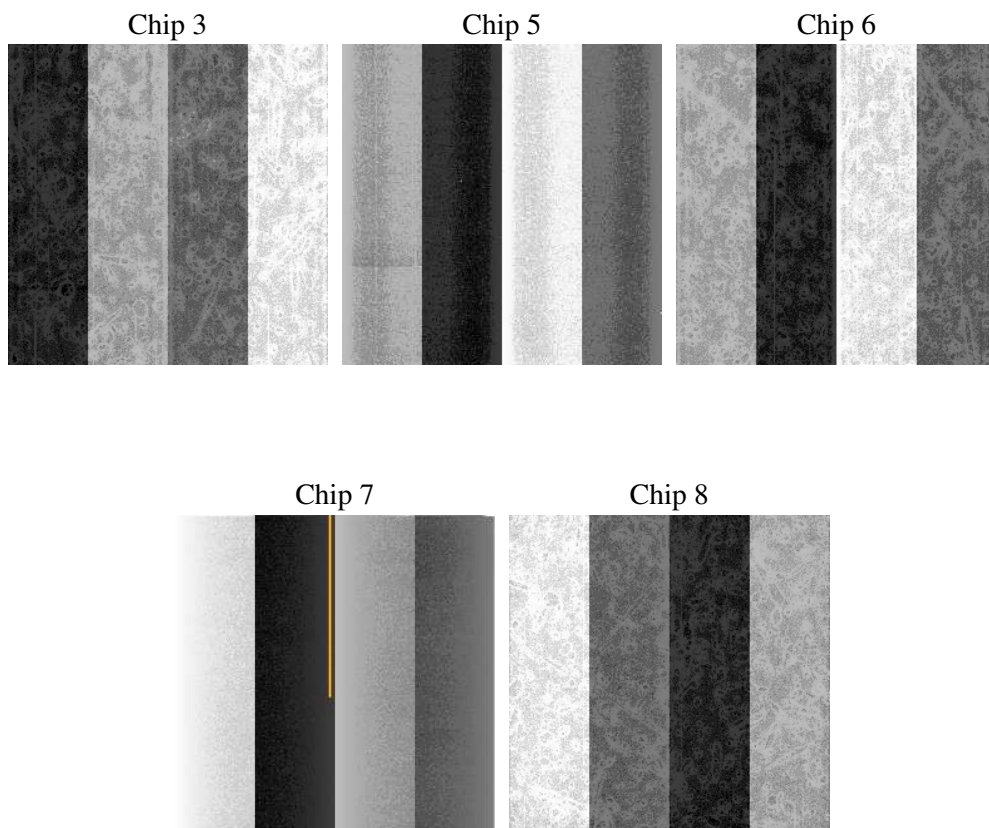
## 2 OBI

### 2.1 OBI

#### 2.1.1 Images



#### 2.1.2 Bias



### 2.1.3 Parameters

obi_num	0
ascdsver	7.6.7
caldbver	3.2.1
date	2006-02-17T04:07:09
revision	2

sched_exp_time	18000.000000
ontime	19310.956641078
ontime3	19304.674670577
ontime5	19310.956660986
ontime6	19307.815650821
ontime7	19310.956641078
ontime8	19310.956641078
l1events	705849

### 2.1.4 Events

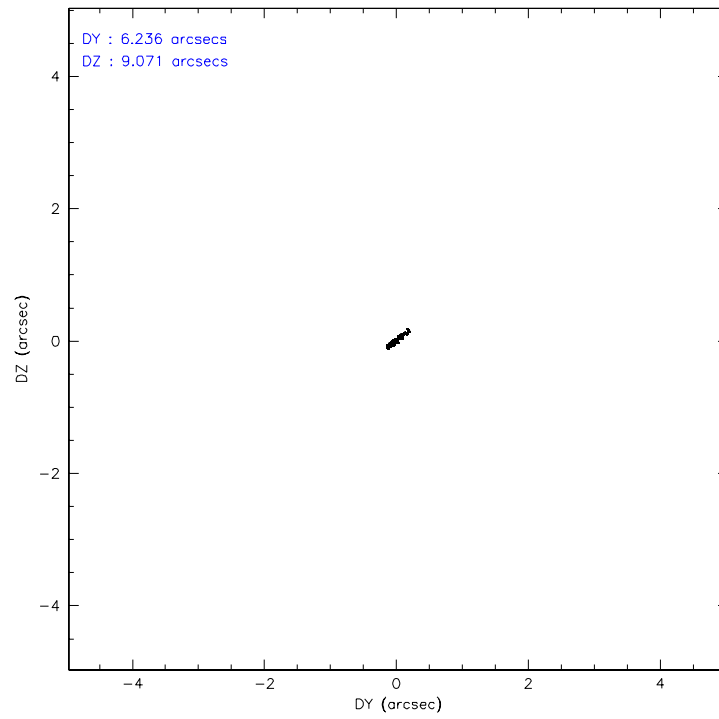
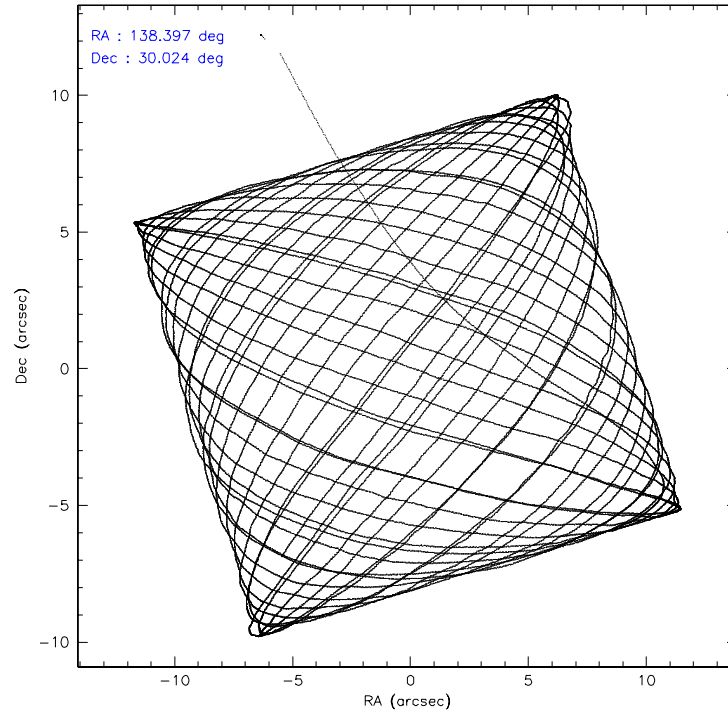
	<b>ccd 3</b>	<b>ccd 5</b>	<b>ccd 6</b>	<b>ccd 7</b>	<b>ccd 8</b>
level 1 events	114596	177542	124122	134446	155143
rejected events	104367	89049	111797	79408	122966
rejected %	91%	50%	90%	59%	79%

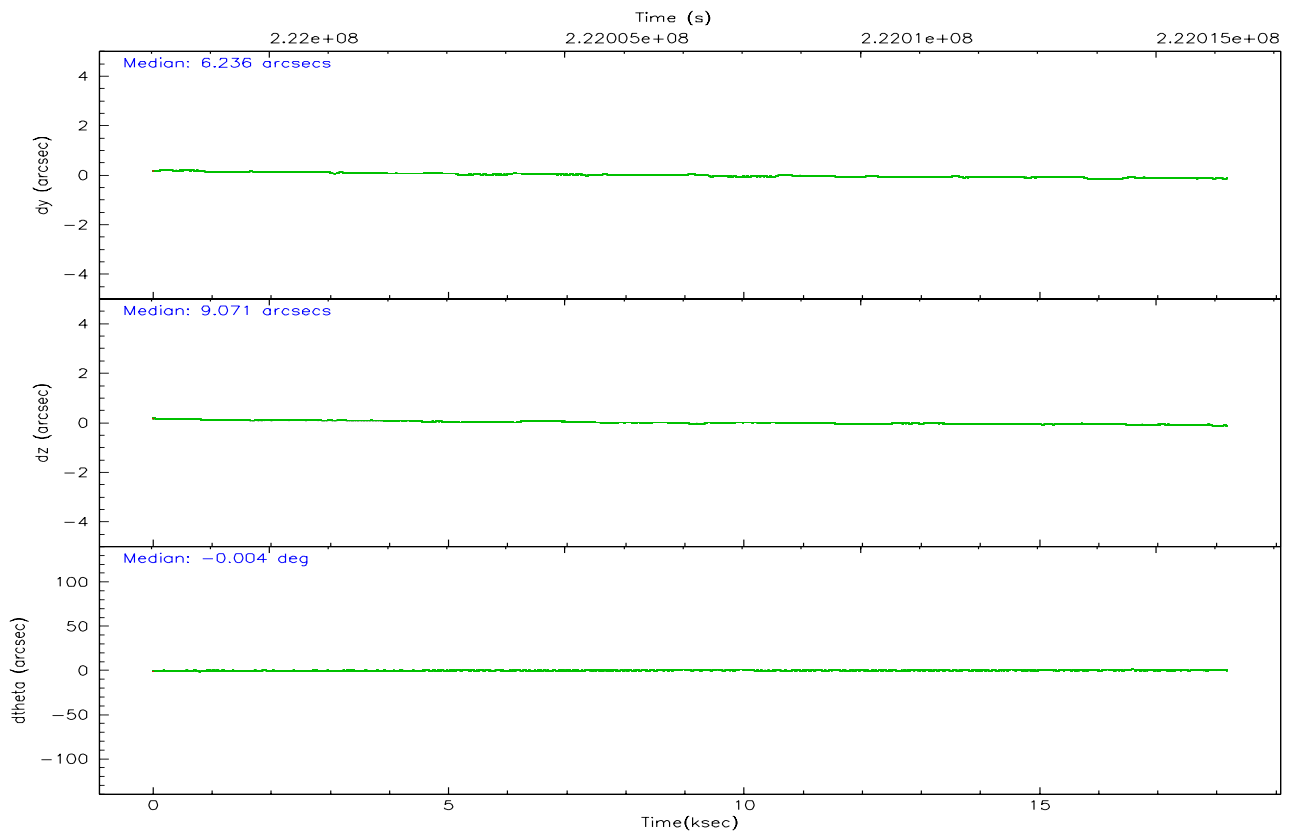
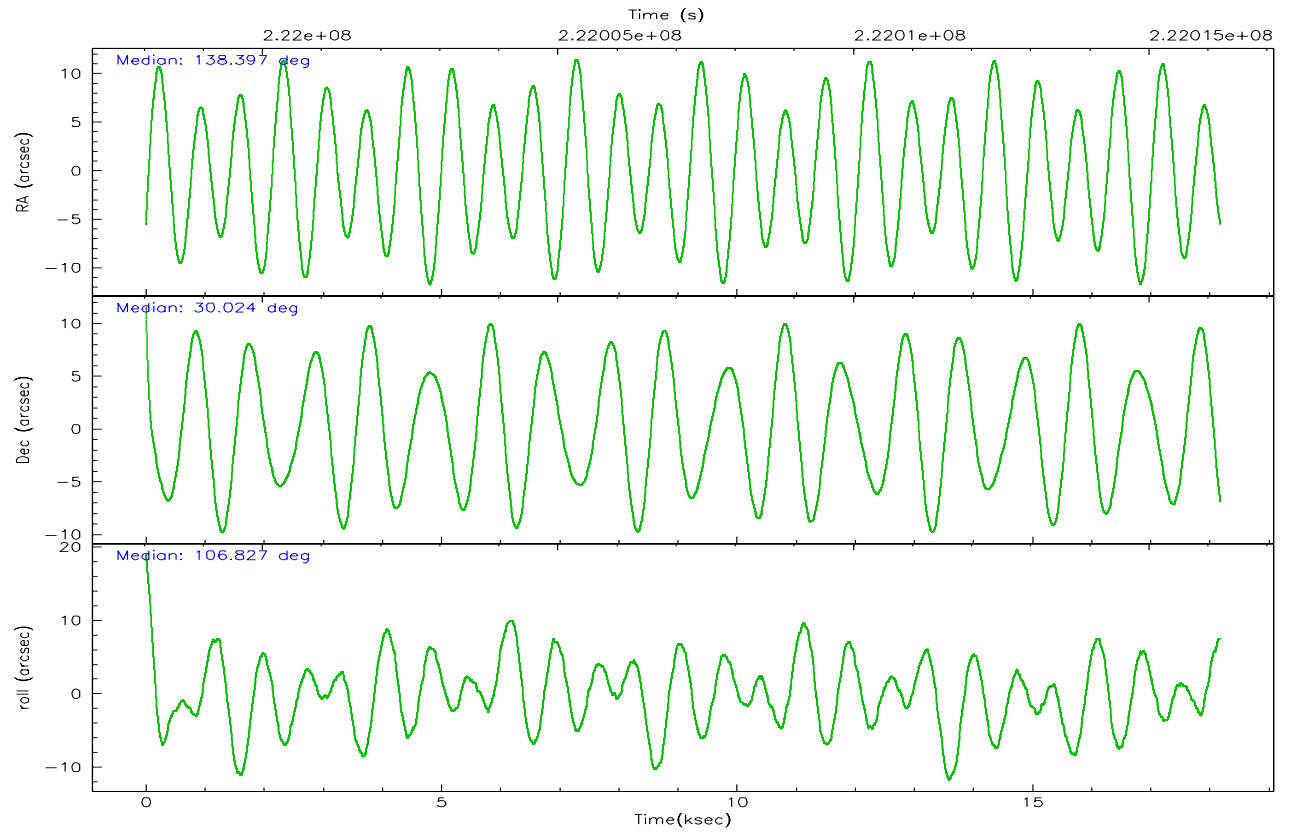
	<b>ccd 3</b>	<b>ccd 5</b>	<b>ccd 6</b>	<b>ccd 7</b>	<b>ccd 8</b>
grade 0 events	3960	17924	4985	4454	10471
	3%	10%	4%	3%	6%
grade 1 events	52	599	52	78	99
	0%	0%	0%	0%	0%
grade 2 events	2241	27357	2704	14319	7551
	1%	15%	2%	10%	4%
grade 3 events	1211	2192	1393	3553	3742
	1%	1%	1%	2%	2%
grade 4 events	1235	2310	1331	3497	3474
	1%	1%	1%	2%	2%
grade 5 events	4386	9068	4905	9800	6622
	3%	5%	3%	7%	4%
grade 6 events	2209	43596	2673	32536	9203
	1%	24%	2%	24%	5%
grade 7 events	99302	74496	106079	66209	113981
	86%	41%	85%	49%	73%

## 2.2 Compared Parameters

Parameter	Planned	Actual	Parameter	Planned	Actual
Instrument	ACIS	ACIS	Obspar format version number	6	6
Detector	ACIS-35678	ACIS-35678	Obspar file type	PREDICTED	ACTUAL
Grating	NONE	NONE	Obspar update status	NONE	UPDATED
Data mode	VFAINT	VFAINT	On-chip summing requested	N	N
Observation mode	POINTING	POINTING	Subarray requested	NONE	NONE
Pointing RA	138.420246	138.3970421677105	Alternating exposures requested	N	N
Pointing Dec	30.005406	30.023758121292	Primary exposure time	0.000000	3.1
Pointing Roll	106.665809	106.8340389651053			
SIM focus pos (mm)	-0.684267	-0.6828225247311905			
SIM defocus (mm)	0	0.001444936568705701			
SIM translation stage pos (mm)	-190.132523	-190.1425803651734			
SIM translation stage offset (mm)	0	0.01005778216563158			
Observation start time	221998208.184000	221996645.21032			
Observation start date	2005-01-13T10:09:04	2005-01-13T09:44:05			
Observation end time	222016208.184000	222017404.02375			
Observation end date	2005-01-13T15:09:04	2005-01-13T15:30:04			
Read mode	TIMED	TIMED			

## 2.3 Aspect





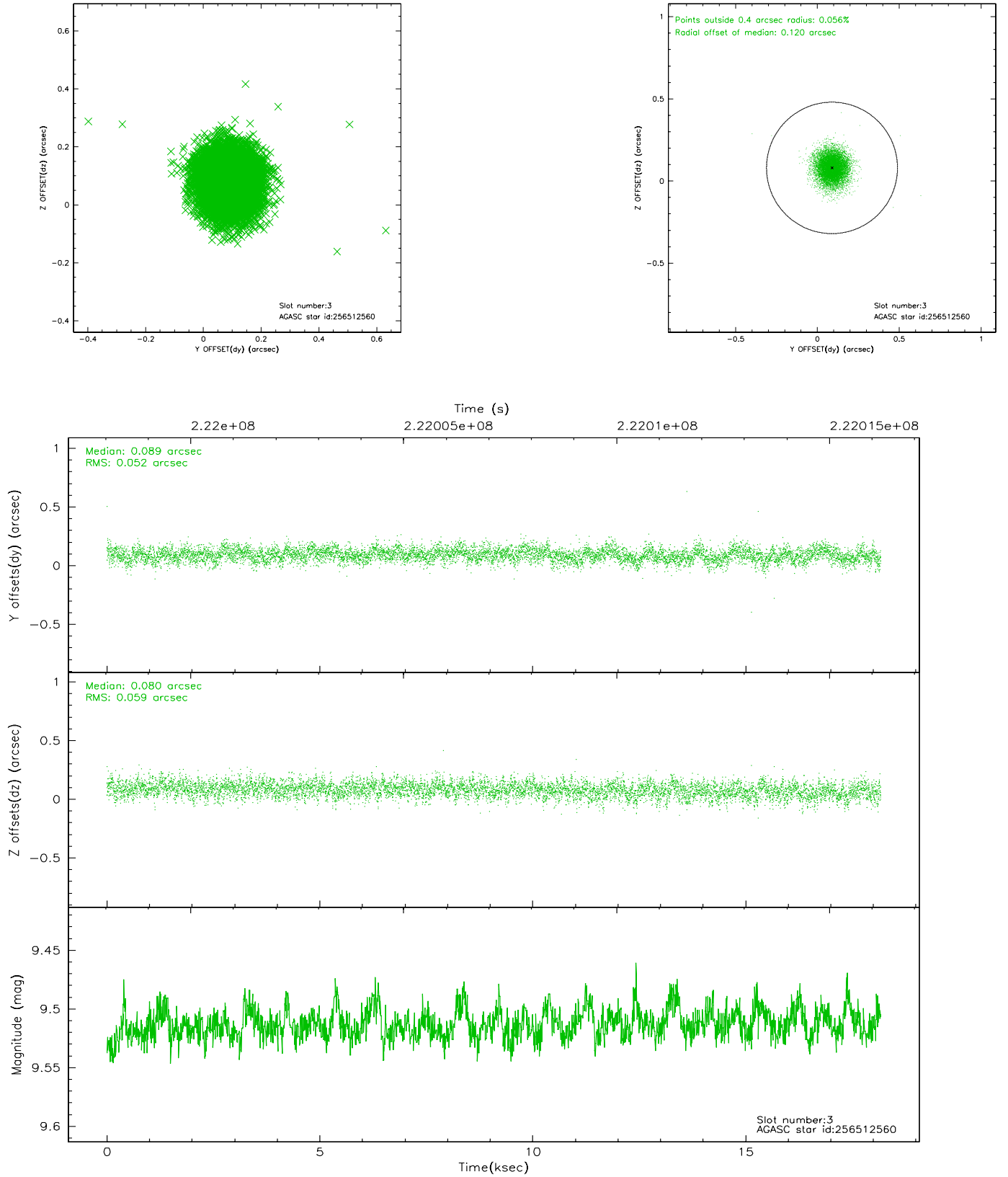
### Slot Statistics

slot	status	id	mag	n_pts	med_dy	med_dz	dr1	dr2	ra	dec	mean_y	mean_z
0	FID	ACIS-S-2	7.10	4434	-0.044	-0.025	0.013	0.020	0.000000	0.000000	-759.01	-1730.28
1	FID	ACIS-S-4	7.21	4434	0.050	0.028	0.020	0.028	0.000000	0.000000	2154.26	178.03
2	FID	ACIS-S-5	7.23	4434	-0.039	0.007	0.016	0.024	0.000000	0.000000	-1811.57	171.93
3	GUIDE	256512560	9.51	8863	0.089	0.080	0.082	0.136	138.888209	29.792531	-1150.28	-1181.61
4	GUIDE	256516632	7.98	8864	0.074	0.075	0.070	0.112	138.597890	29.944780	-367.50	-468.39
5	GUIDE	326636960	9.56	8843	-0.094	-0.161	0.106	0.170	137.698852	30.105026	994.44	2047.45
6	GUIDE	326639392	8.60	8865	-0.087	-0.109	0.066	0.105	137.626996	30.361101	1941.53	1991.38
7	GUIDE	326770928	9.52	8862	0.020	0.118	0.109	0.180	139.101080	30.039052	-486.44	-2068.91

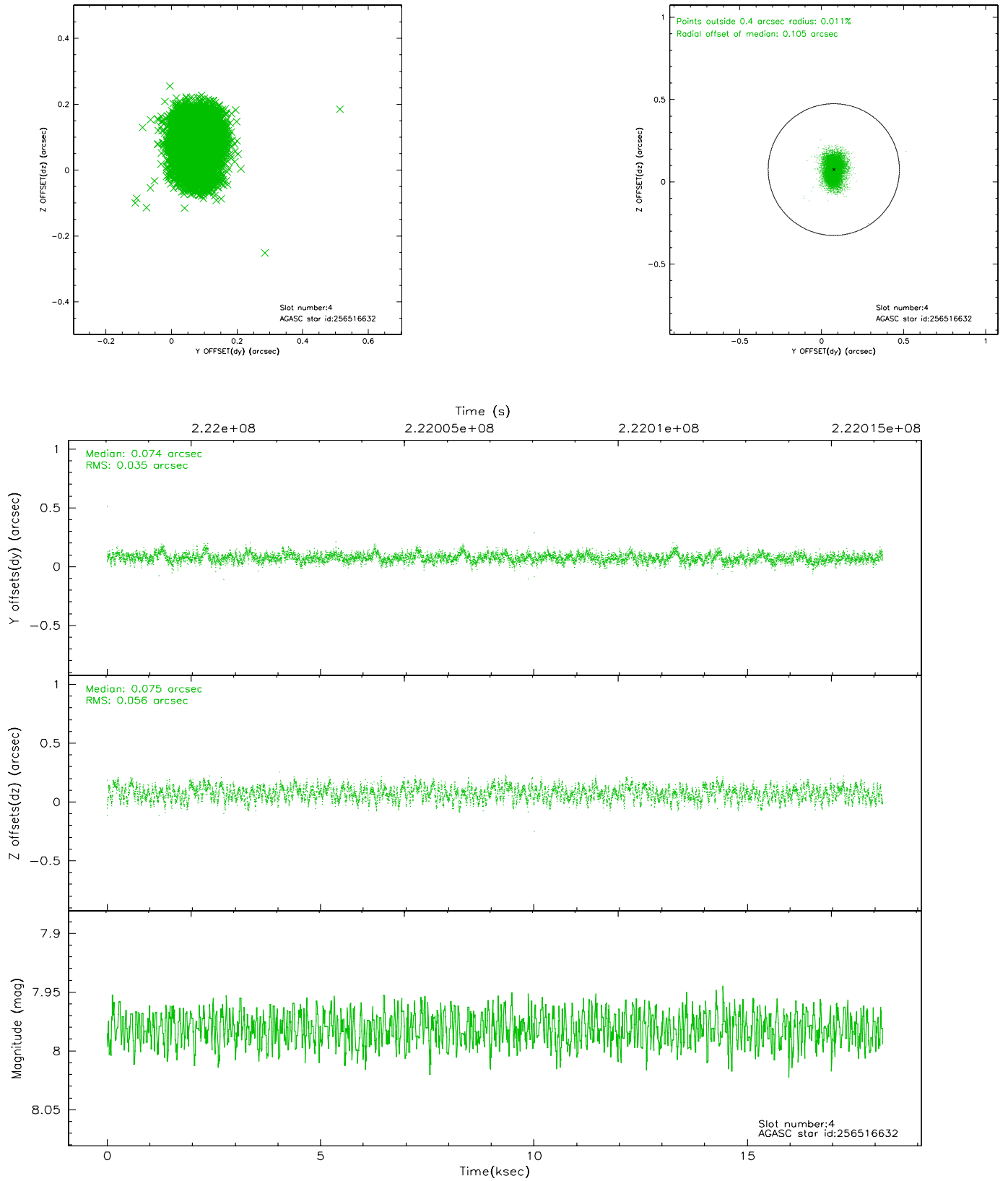


## 2.4 Star Slots

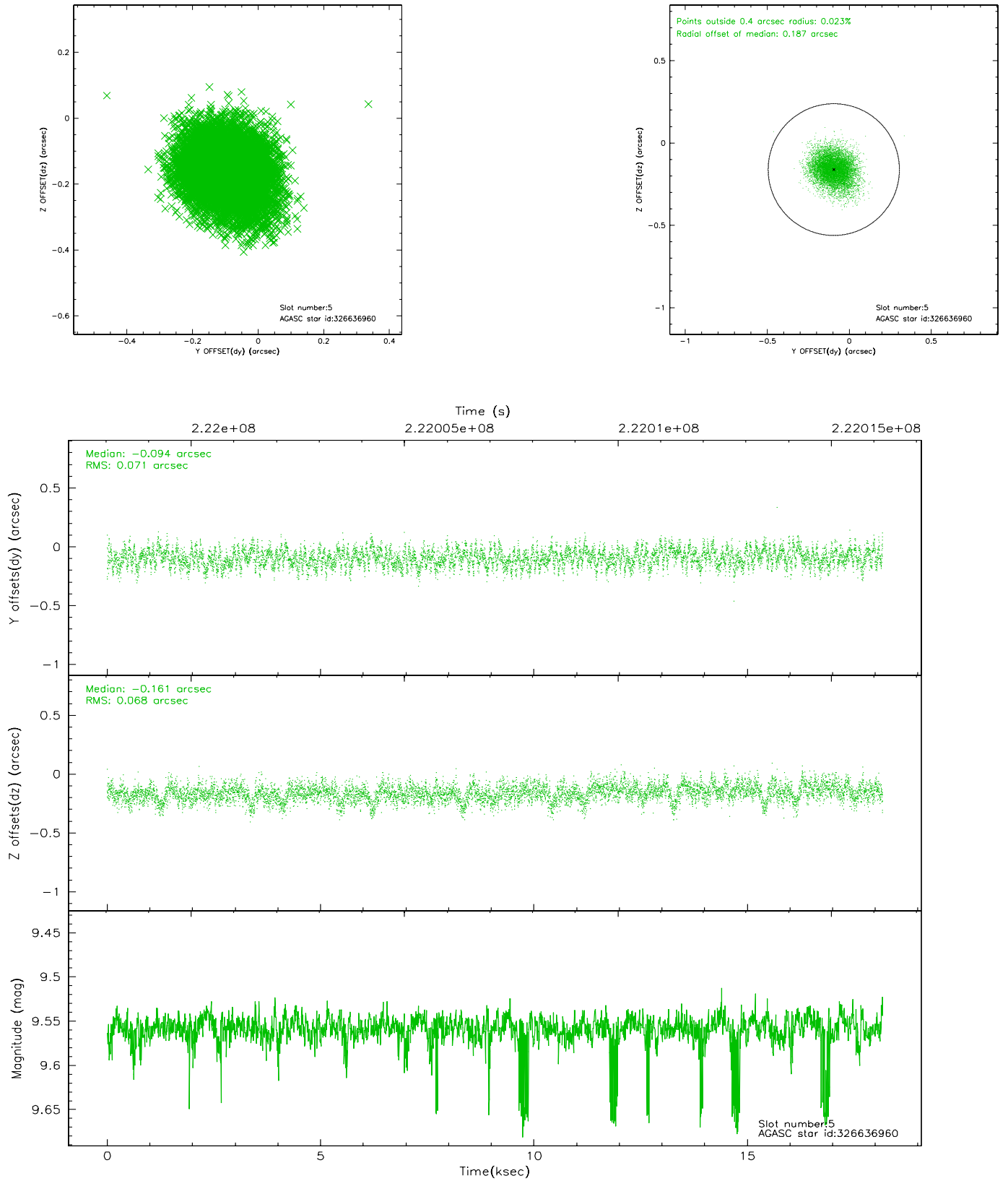
### 2.4.1 Slot 3



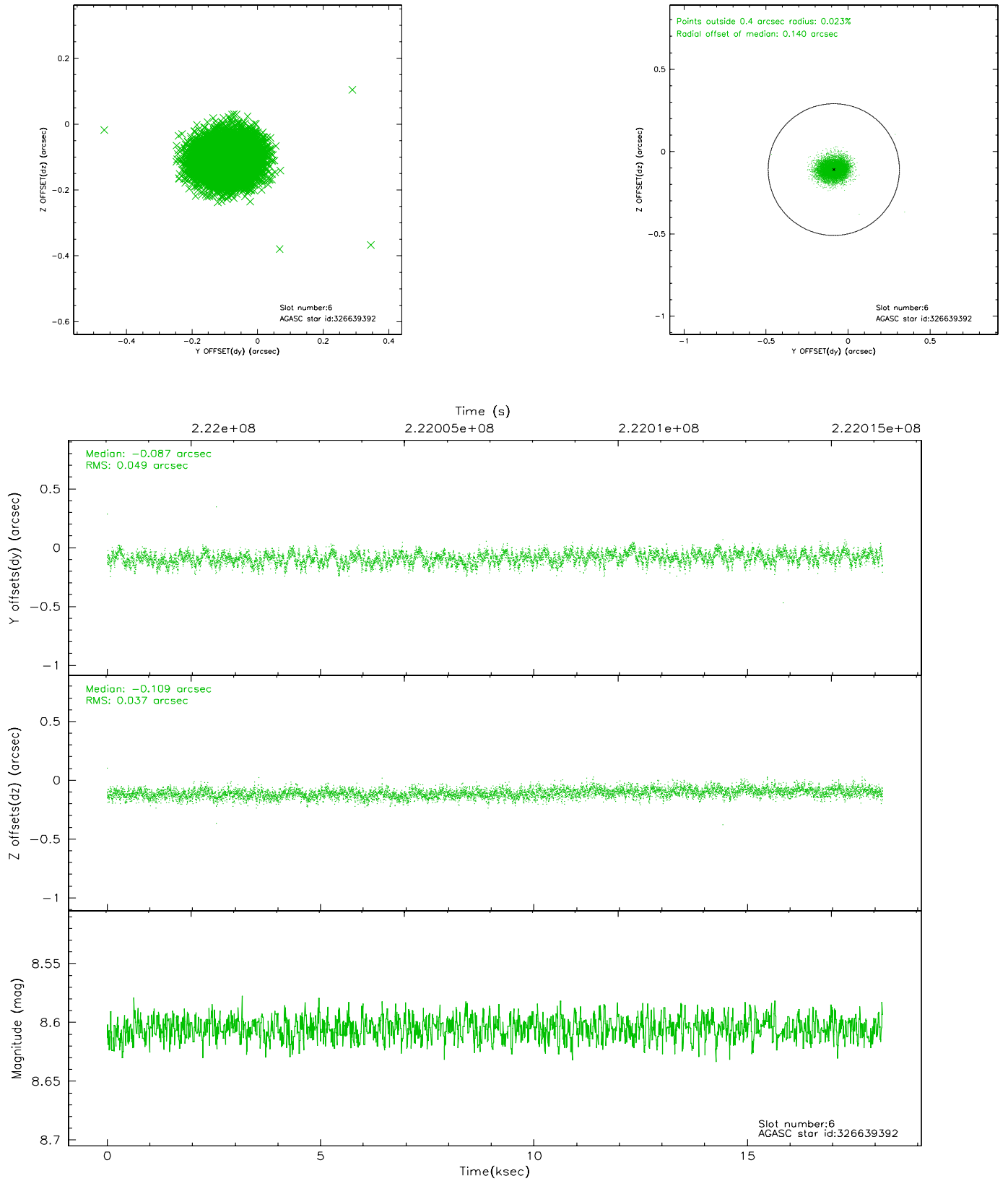
## 2.4.2 Slot 4



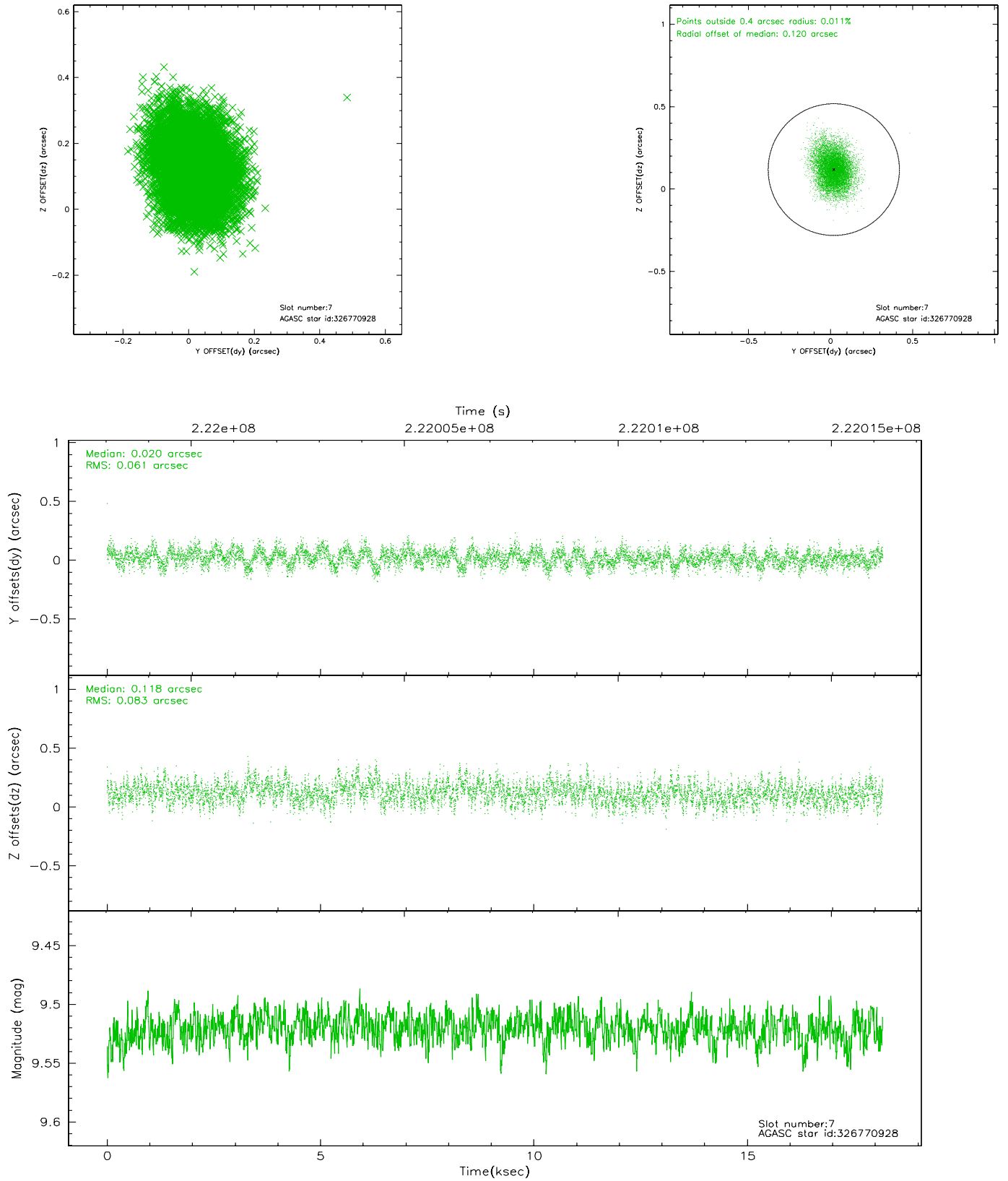
### 2.4.3 Slot 5



## 2.4.4 Slot 6

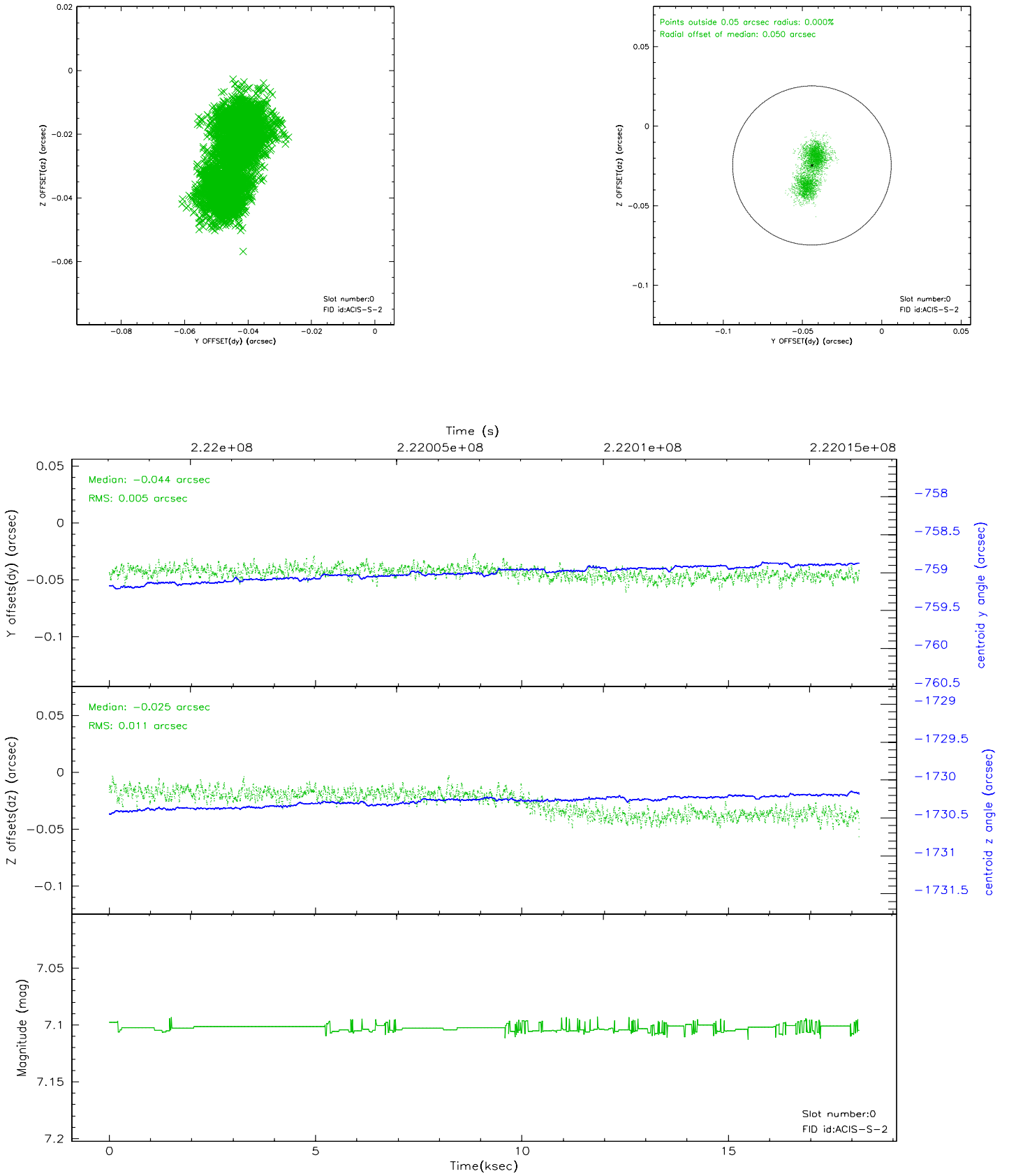


## 2.4.5 Slot 7

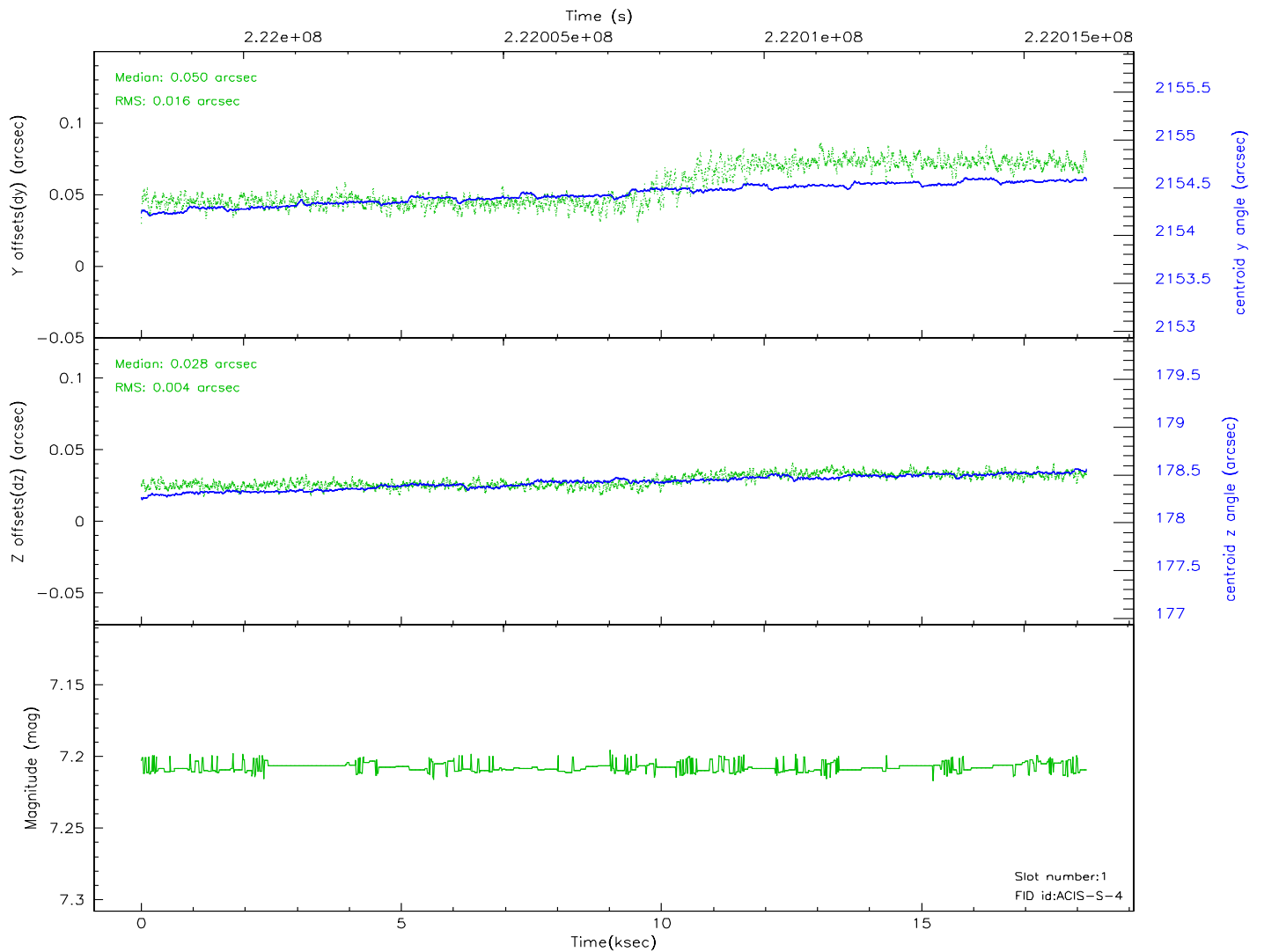
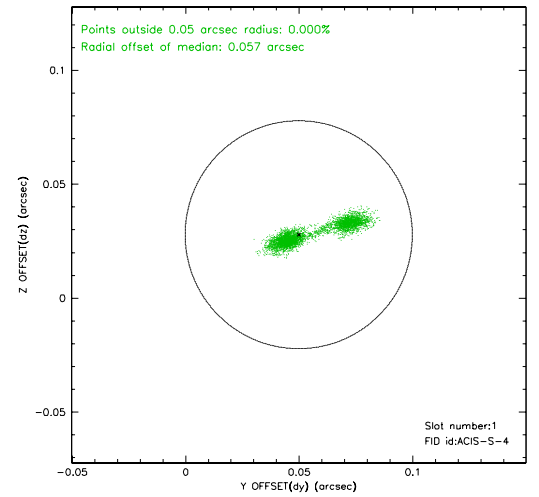
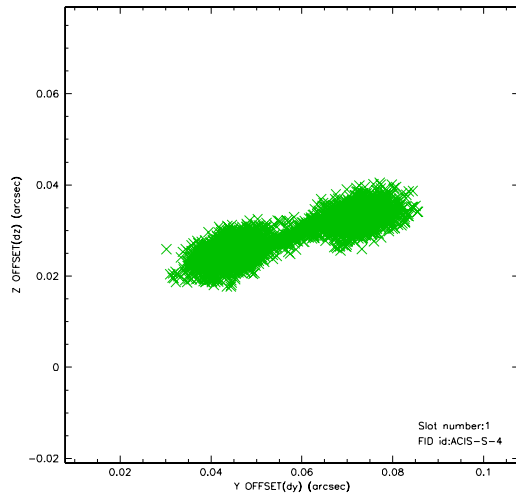


## 2.5 FID Slots

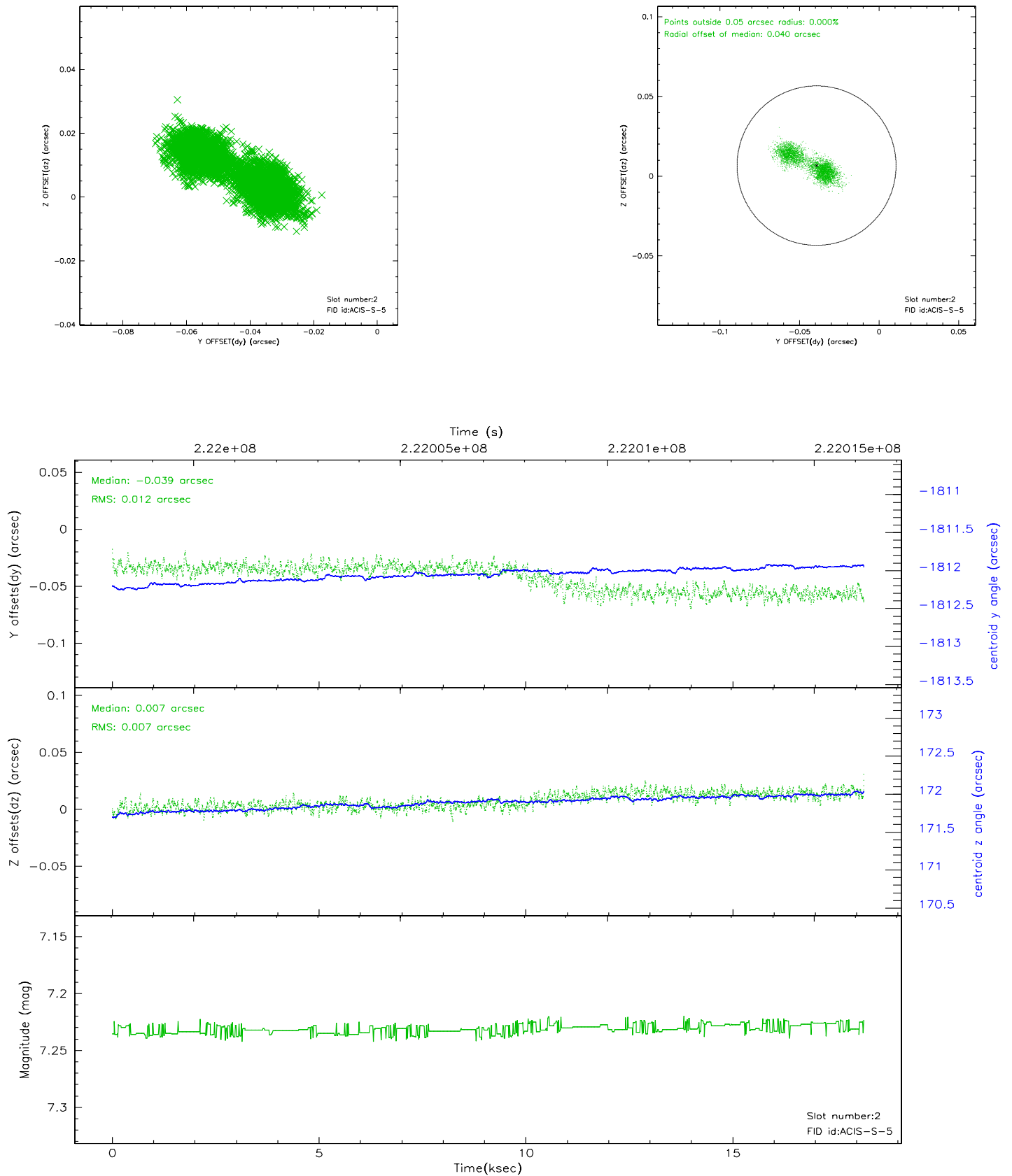
### 2.5.1 Slot 0



## 2.5.2 Slot 1

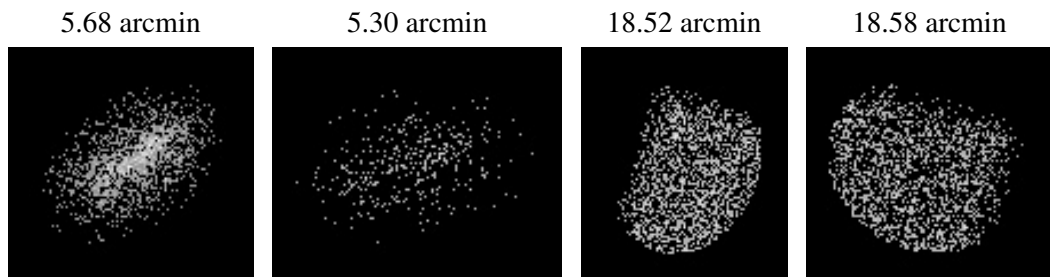


### 2.5.3 Slot 2





### 3 Point Sources



# A Summary

## A.1 Status

V&V Scientist	Beth Sundheim
V&V Date (YYYY-MM-DD)	2006.02.17
V&V Edition	1
V&V Disposition and Status	OK
V&V Charge Time	18.16909

## A.2 Comments

Charge time:

Using existing charge time of 18.16909.

Focal plane temperature rises during observation.