

V&V Reference Report

L2 ASCDS Version : 7.6.7

Observation 5779 - L2 Version 002
Chandra X-Ray Center

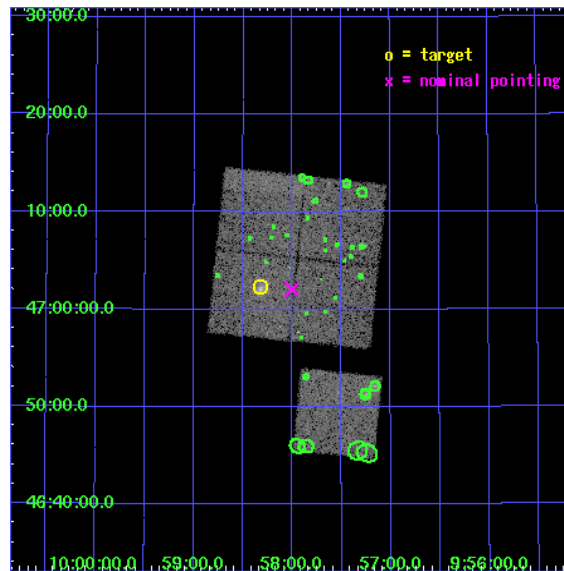
L2 Processing Date: Feb 23 2006

Contents

1	Front	2
2	OBI	3
2.1	OBI	3
2.1.1	Images	3
2.1.2	Bias	3
2.1.3	Parameters	4
2.1.4	Events	4
2.2	Compared Parameters	5
2.3	Aspect	6
2.4	Star Slots	9
2.4.1	Slot 3	9
2.4.2	Slot 4	10
2.4.3	Slot 5	11
2.4.4	Slot 6	12
2.4.5	Slot 7	13
2.5	FID Slots	14
2.5.1	Slot 0	14
2.5.2	Slot 1	15
2.5.3	Slot 2	16
3	Point Sources	17
A	Summary	18
A.1	Status	18
A.2	Comments	18

1 Front

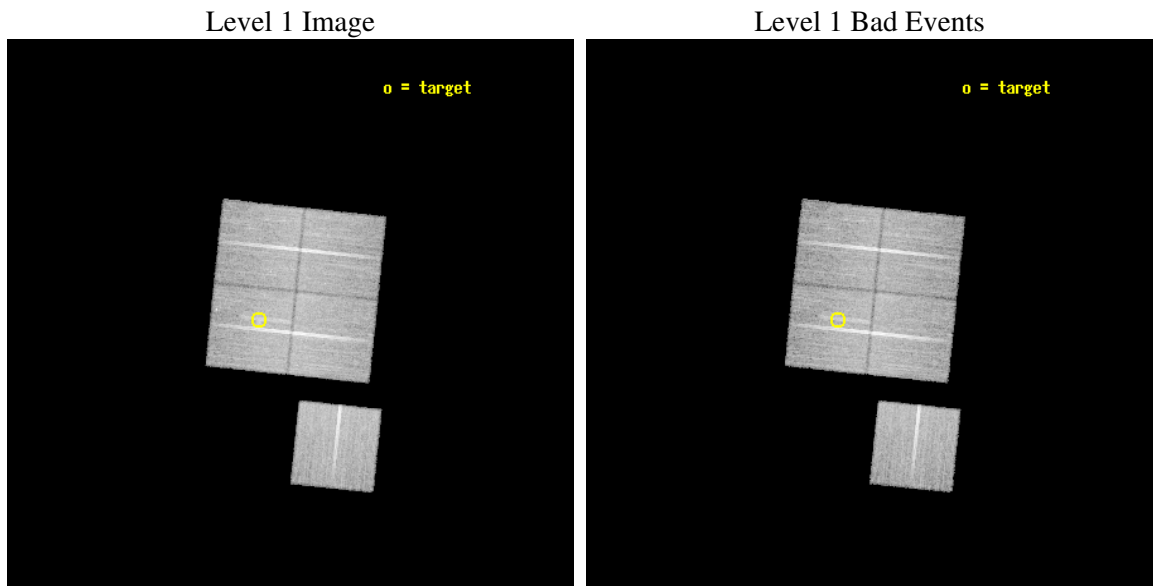
seq_num	800492
obs_id	5779
title	Chandra observations of high-redshift clusters of galaxies from the 400 Square Degrees ROSAT PSPC survey
observer	Dr. Steven Murray
object	cl0958+4702
dtcycle	0
cycle	P
ra_targ	149.580417
dec_targ	47.038056
ra_nom	149.50093085096
dec_nom	47.034403389862
roll_nom	185.99192312791
revision	2
ontime	25565.617970407
livetime	25231.58435049
ontime0	25568.758970559
ontime1	25568.758940667
ontime2	25565.618000209
ontime3	25565.617970407
ontime6	25568.758950651
l2events	66179



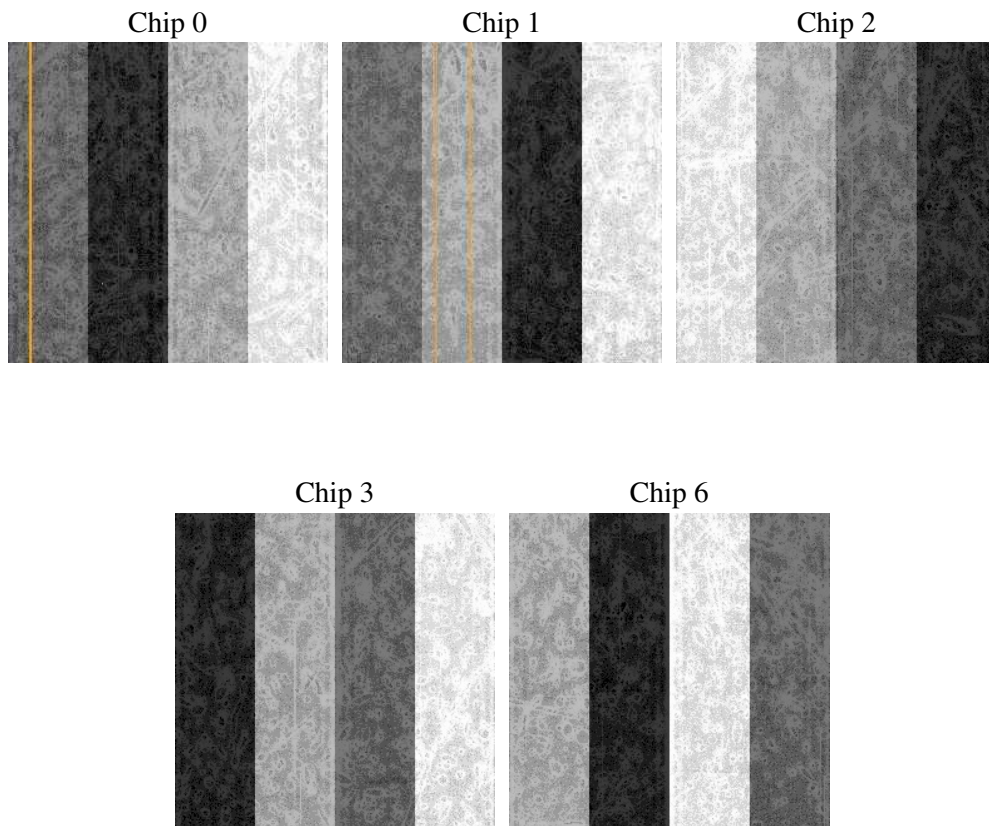
2 OBI

2.1 OBI

2.1.1 Images



2.1.2 Bias



2.1.3 Parameters

obi_num	0
ascdsver	7.6.7
caldbver	3.2.1
date	2006-02-23T22:06:57
revision	2

sched_exp_time	25800.000000
ontime	25570.972117037
ontime0	25574.113117188
ontime1	25574.113067389
ontime2	25570.972146839
ontime3	25570.972117037
ontime6	25574.11309728
l1events	740218

2.1.4 Events

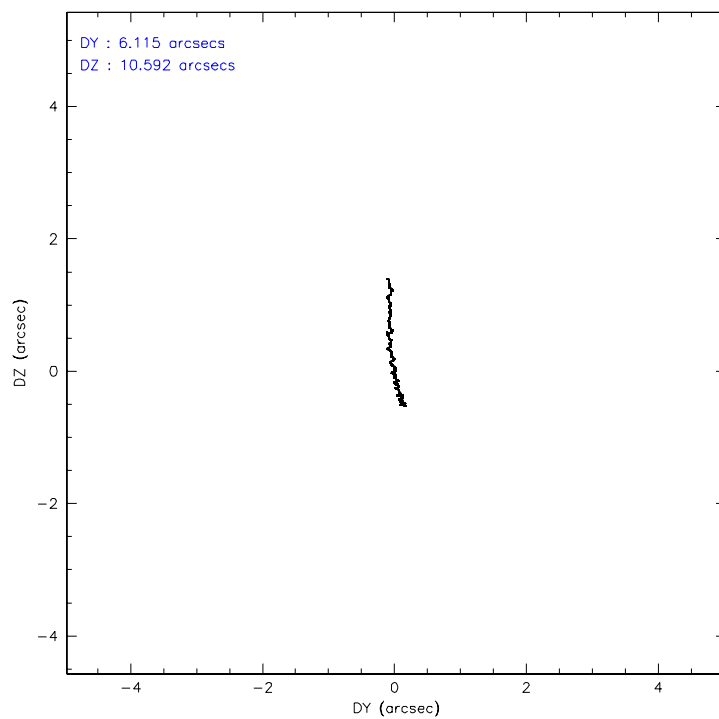
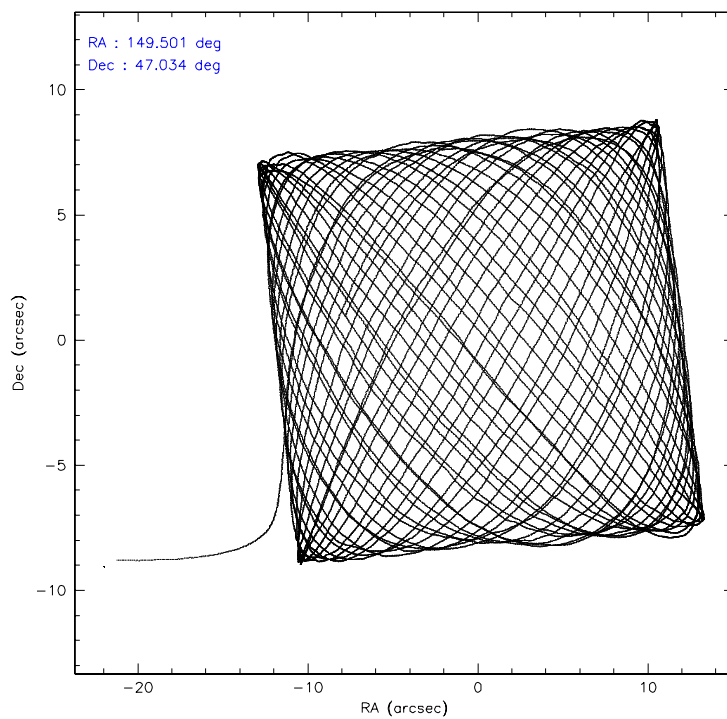
	ccd 0	ccd 1	ccd 2	ccd 3	ccd 6
level 1 events	139318	141194	157120	150612	151974
rejected events	123840	124153	141836	134878	135870
rejected %	88%	87%	90%	89%	89%

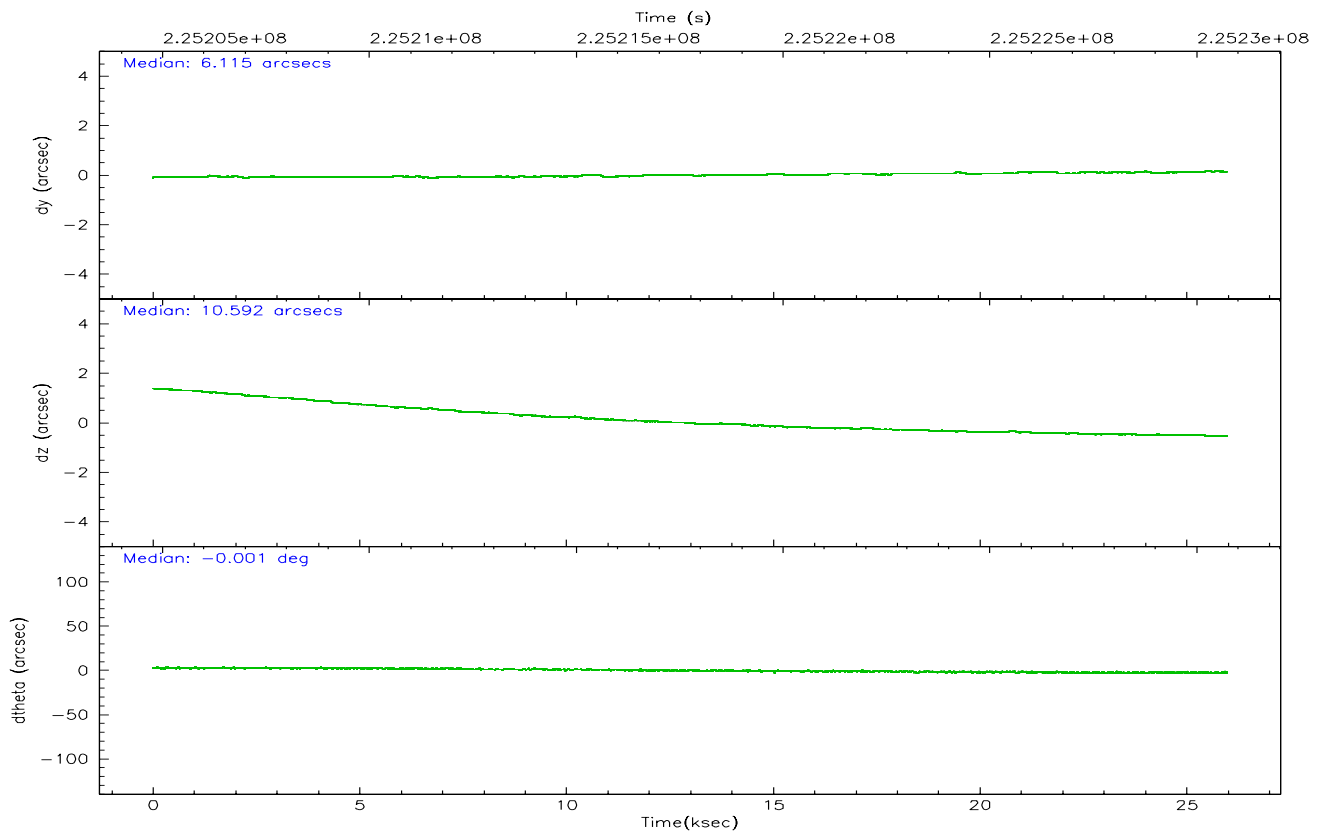
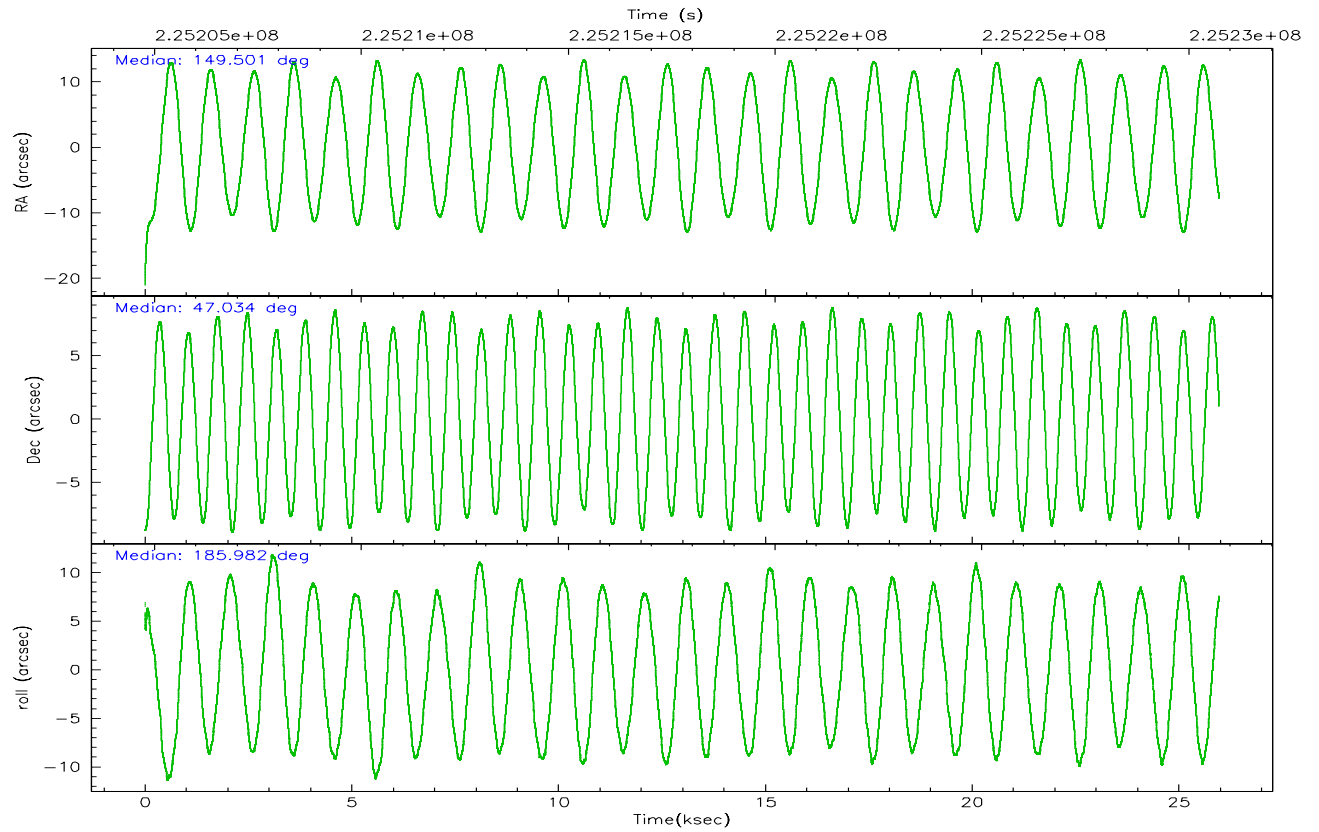
	ccd 0	ccd 1	ccd 2	ccd 3	ccd 6
grade 0 events	5590	6130	5562	6152	5816
	4%	4%	3%	4%	3%
grade 1 events	71	75	85	75	60
	0%	0%	0%	0%	0%
grade 2 events	3610	3711	3534	3235	3353
	2%	2%	2%	2%	2%
grade 3 events	1769	1946	1695	1728	1771
	1%	1%	1%	1%	1%
grade 4 events	1614	1908	1683	1727	1767
	1%	1%	1%	1%	1%
grade 5 events	5343	5707	5143	6066	5913
	3%	4%	3%	4%	3%
grade 6 events	2899	3349	2815	2895	3398
	2%	2%	1%	1%	2%
grade 7 events	118422	118368	136603	128734	129896
	85%	83%	86%	85%	85%

2.2 Compared Parameters

Parameter	Planned	Actual	Parameter	Planned	Actual
Instrument	ACIS	ACIS	Obspar format version number	6	6
Detector	ACIS-01236	ACIS-01236	Obspar file type	PREDICTED	ACTUAL
Grating	NONE	NONE	Obspar update status	NONE	UPDATED
Data mode	VFAINT	VFAINT	On-chip summing requested	N	N
Observation mode	POINTING	POINTING	Subarray requested	NONE	NONE
Pointing RA	149.533339	149.5009308509596	Alternating exposures requested	N	N
Pointing Dec	47.050576	47.03440338986167	Primary exposure time	0.000000	3.1
Pointing Roll	185.759515	185.9919231279147			
SIM focus pos (mm)	-0.782348	-0.7809083437167272			
SIM defocus (mm)	0	0.001439871863259334			
SIM translation stage pos (mm)	-225.840463	-225.848371962627			
SIM translation stage offset (mm)	-7.752	-7.744081040302689			
Observation start time	225204944.184000	225203764.26775			
Observation start date	2005-02-19T12:54:40	2005-02-19T12:36:04			
Observation end time	225230744.184000	225231152.26899			
Observation end date	2005-02-19T20:04:40	2005-02-19T20:12:32			
Read mode	TIMED	TIMED			

2.3 Aspect



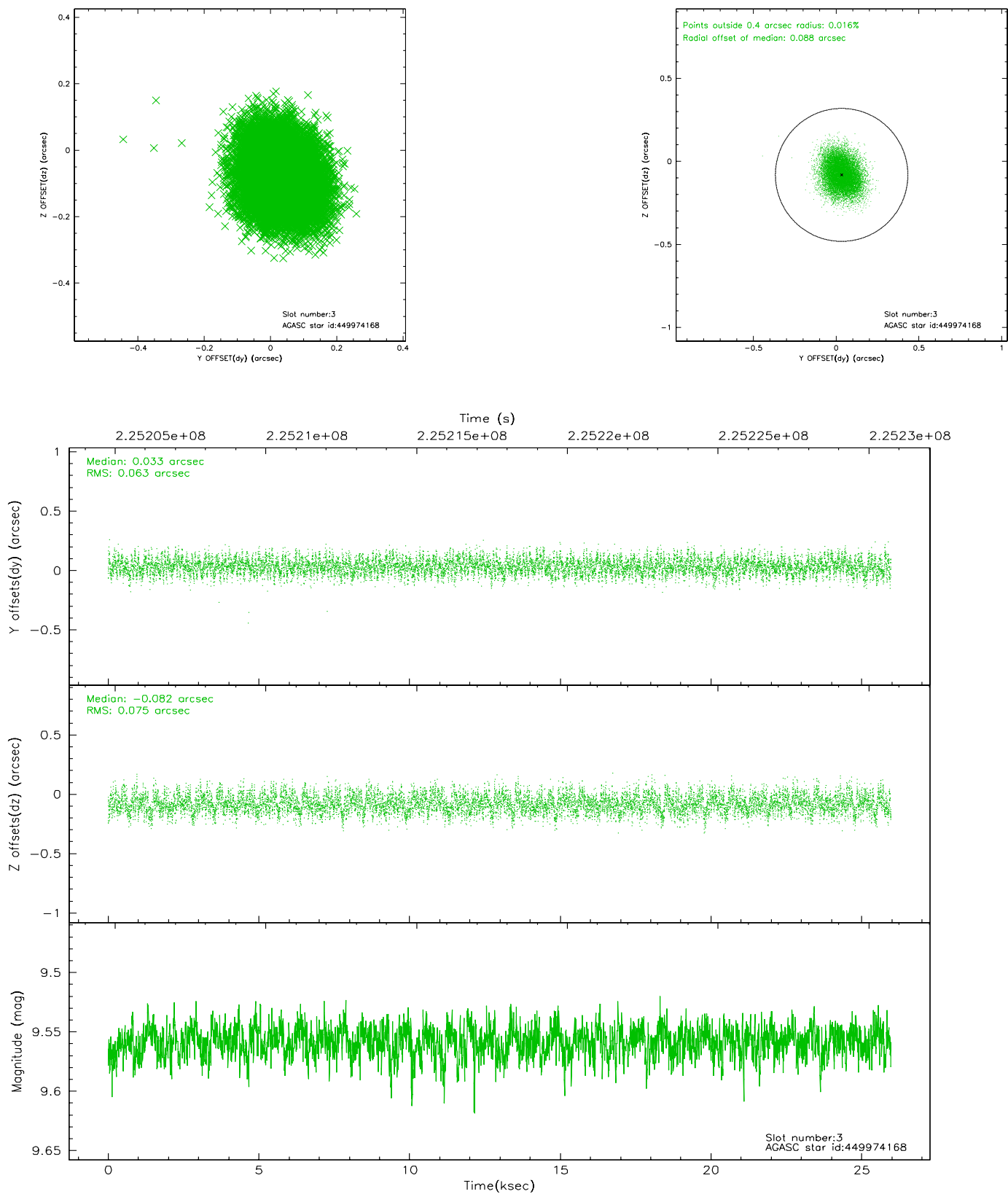


Slot Statistics

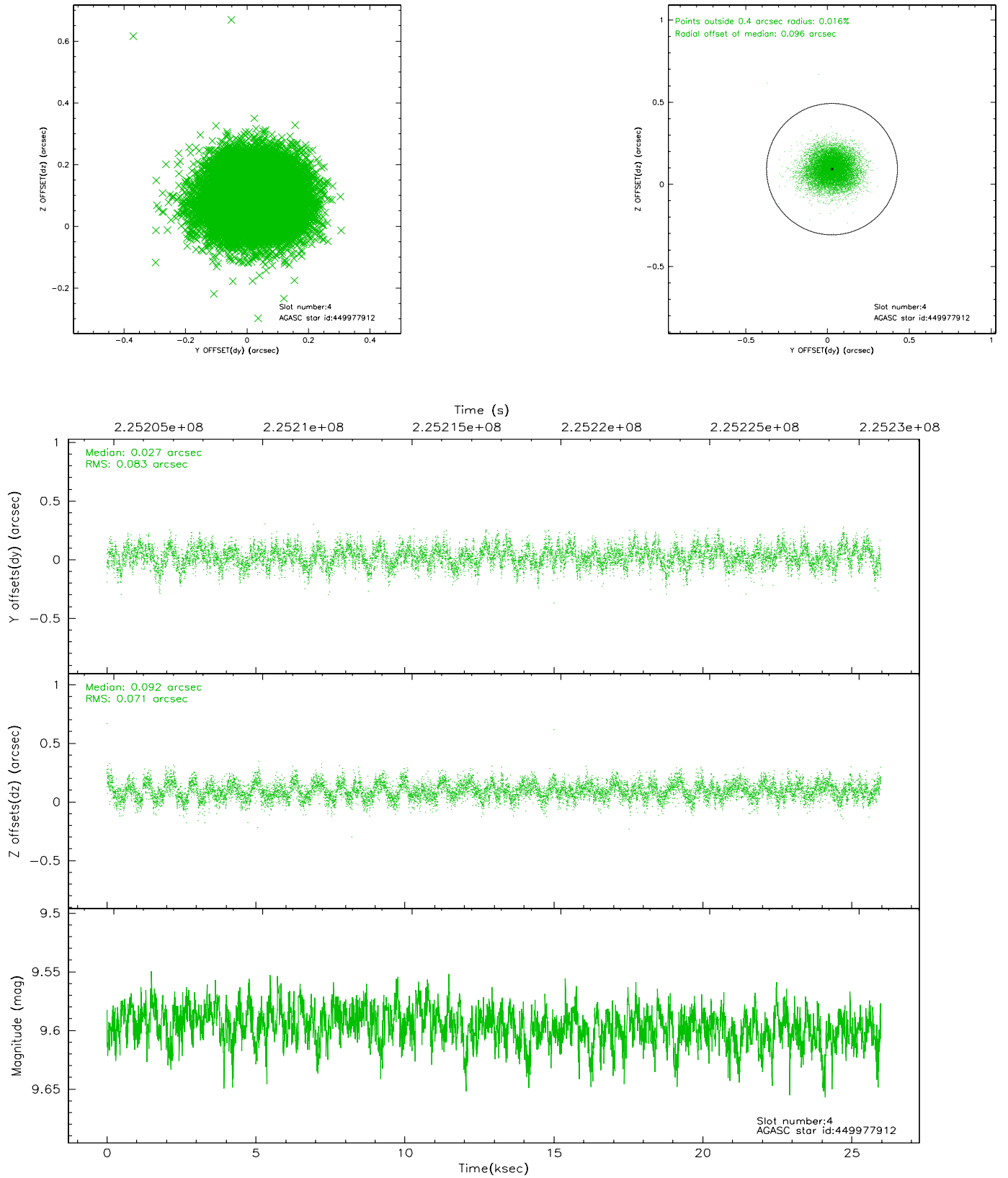
slot	status	id	mag	n_pts	med_dy	med_dz	dr1	dr2	ra	dec	mean_y	mean_z
0	FID	ACIS-I-1	7.24	6337	0.094	-0.078	0.016	0.024	0.000000	0.000000	933.52	-993.30
1	FID	ACIS-I-5	7.22	6337	-0.208	0.090	0.016	0.027	0.000000	0.000000	-1814.80	904.31
2	FID	ACIS-I-6	7.26	6337	0.024	0.059	0.018	0.036	0.000000	0.000000	398.91	1548.88
3	GUIDE	449974168	9.56	12659	0.033	-0.082	0.106	0.168	149.675378	46.468450	-140.28	2120.12
4	GUIDE	449977912	9.60	12665	0.027	0.092	0.116	0.186	148.746474	46.699576	2058.79	1053.34
5	GUIDE	449979224	8.46	12673	-0.035	0.036	0.064	0.105	149.269187	47.303585	550.58	-971.70
6	GUIDE	449980528	8.94	12668	0.012	-0.104	0.074	0.120	149.486514	46.952477	150.51	340.27
7	GUIDE	450372632	9.63	12667	-0.037	0.057	0.108	0.181	149.402650	47.628471	107.21	-2101.78

2.4 Star Slots

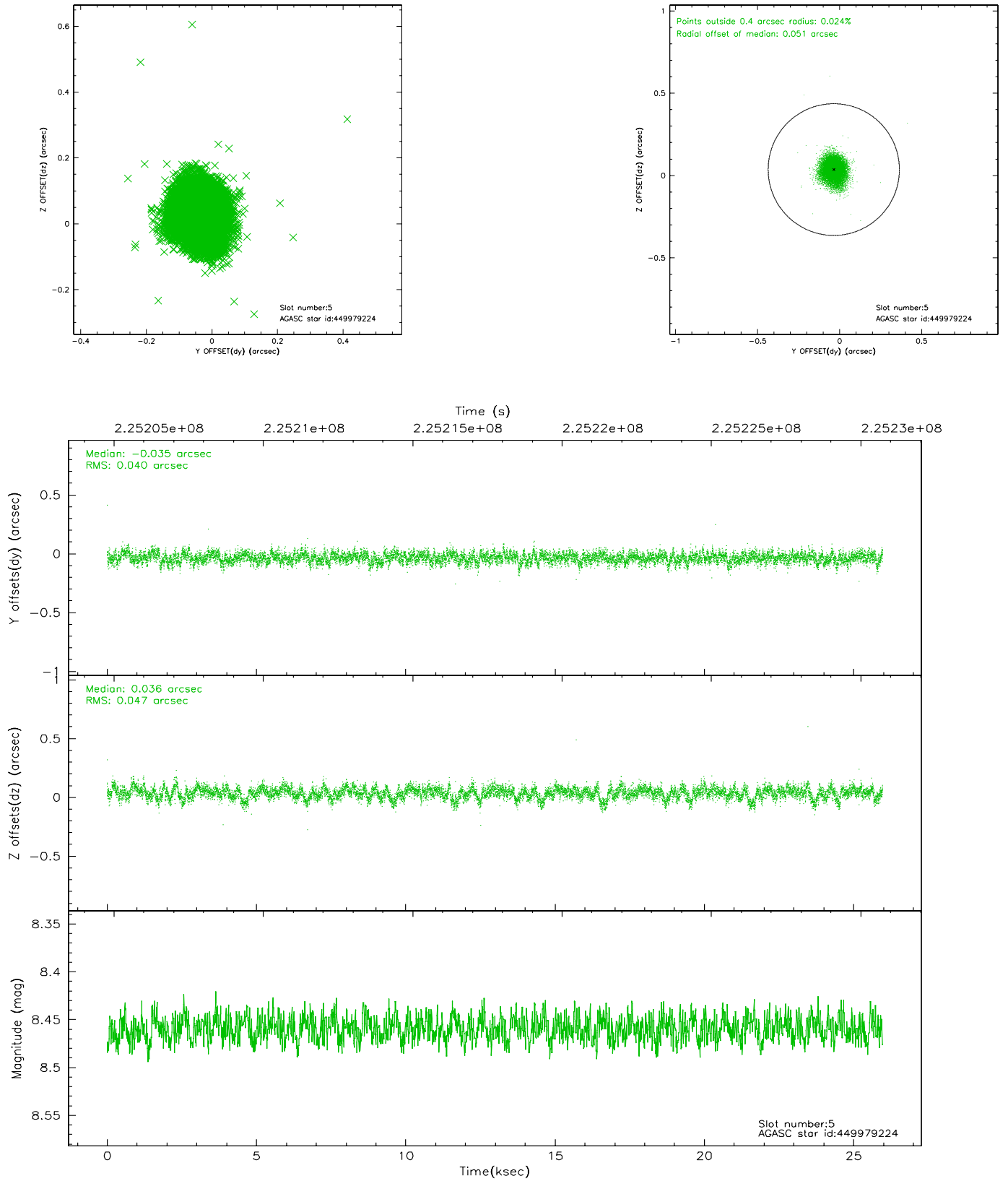
2.4.1 Slot 3



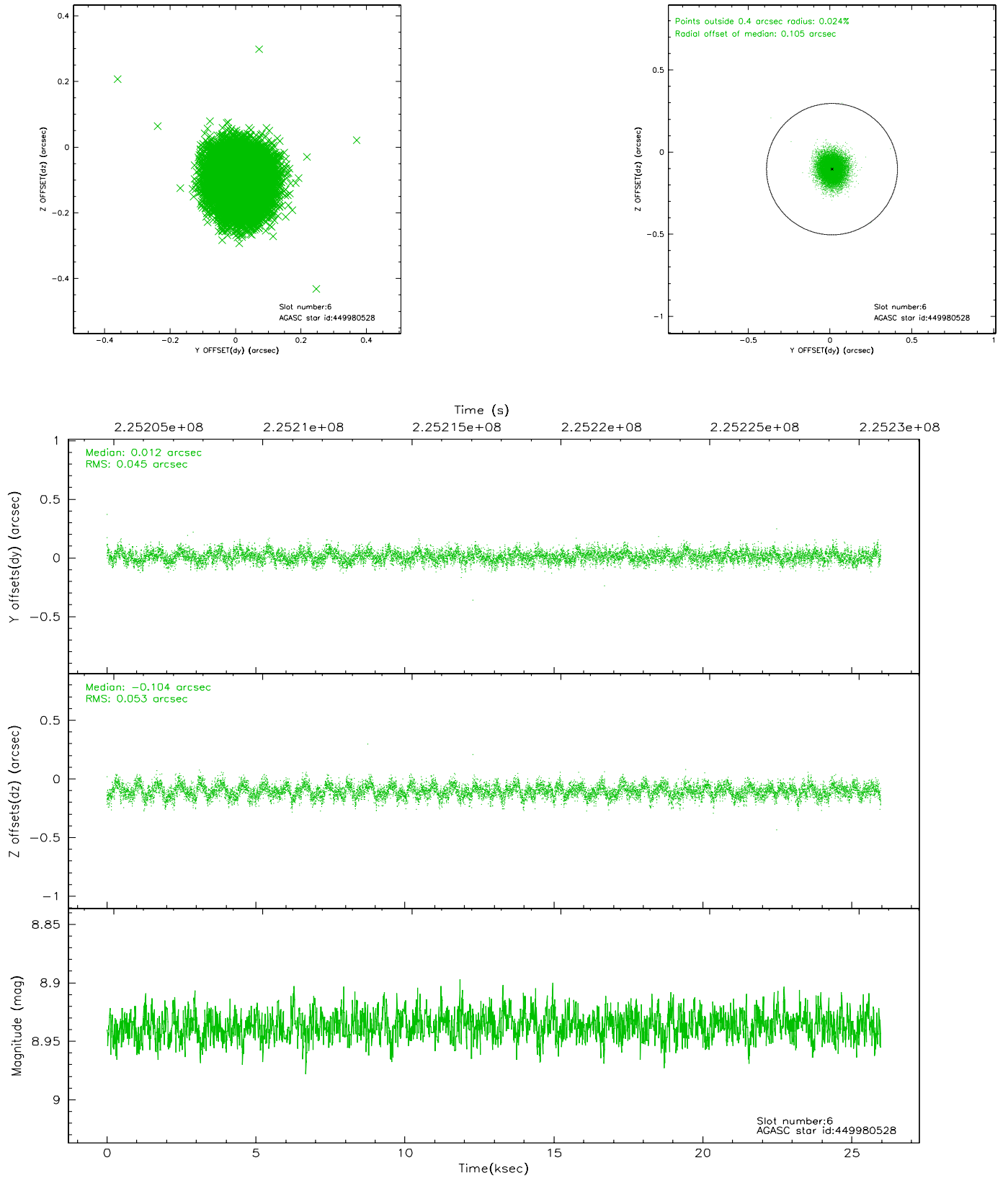
2.4.2 Slot 4



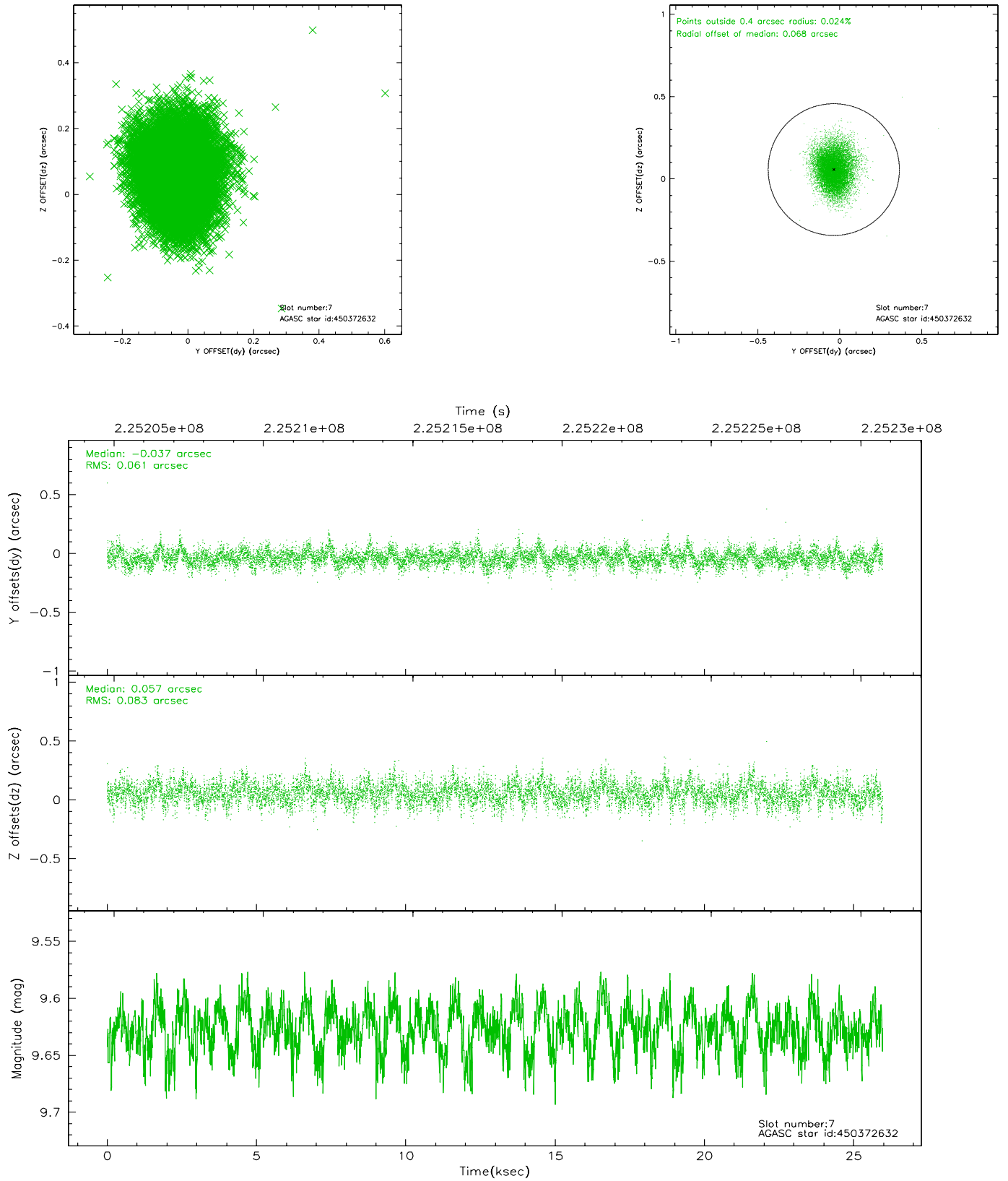
2.4.3 Slot 5



2.4.4 Slot 6

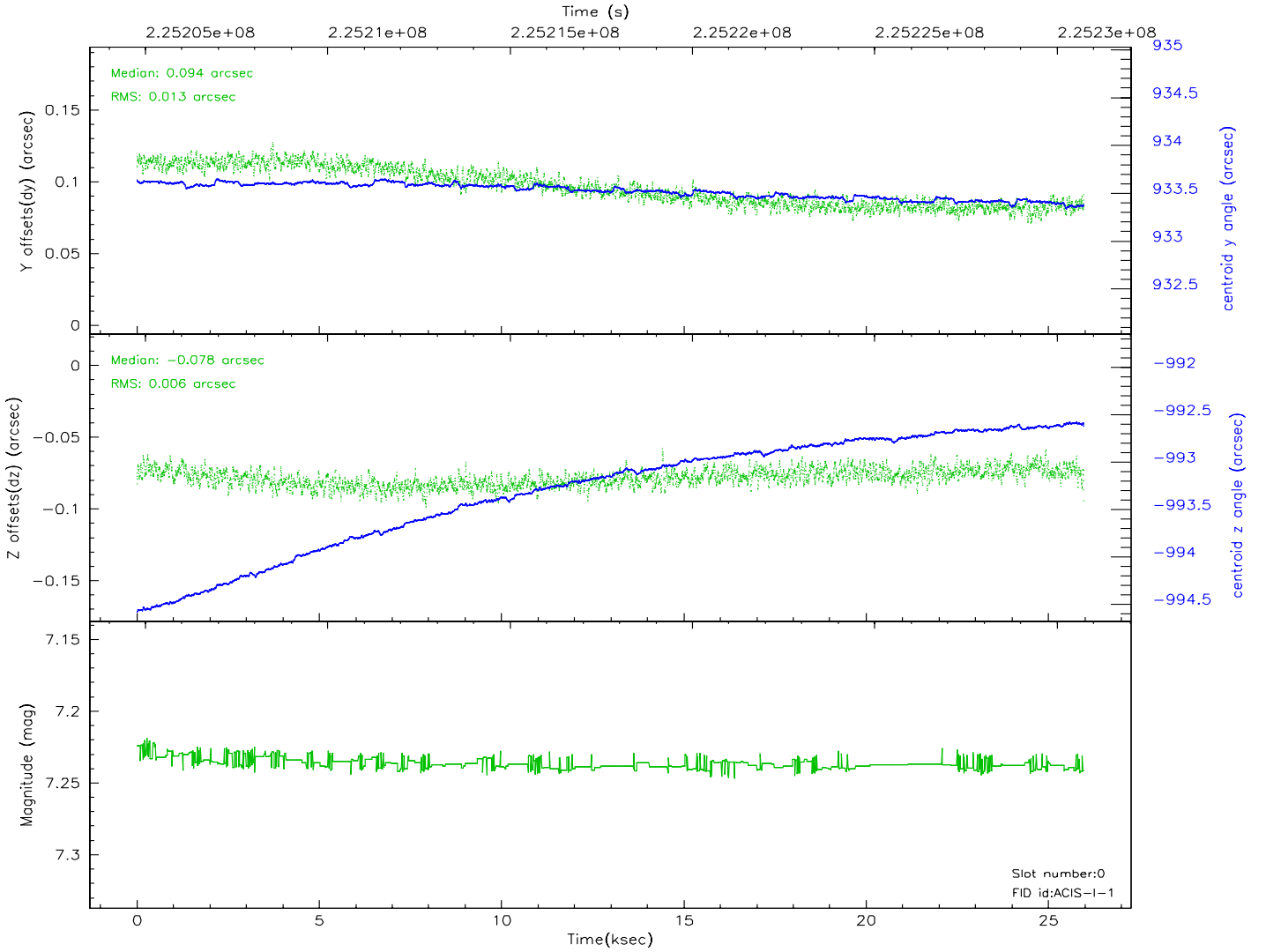
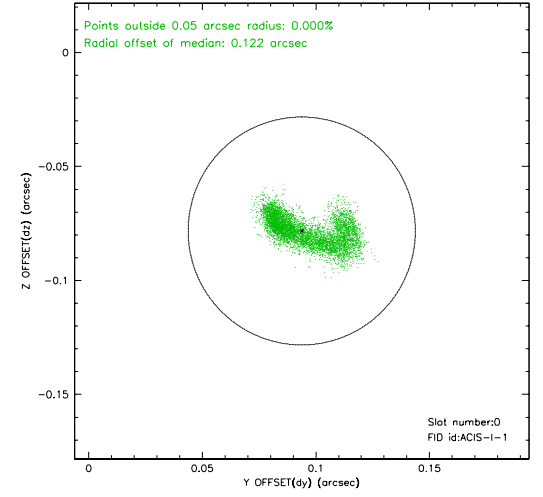
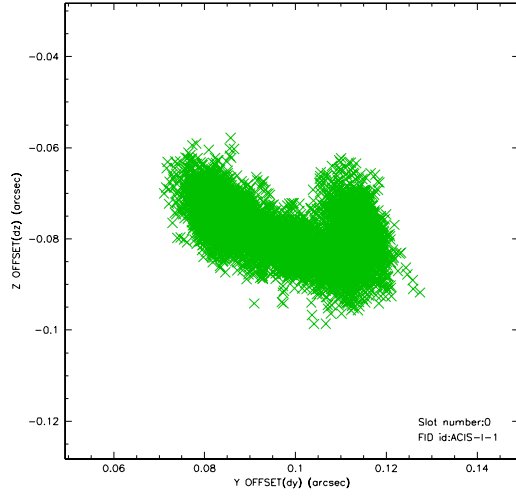


2.4.5 Slot 7

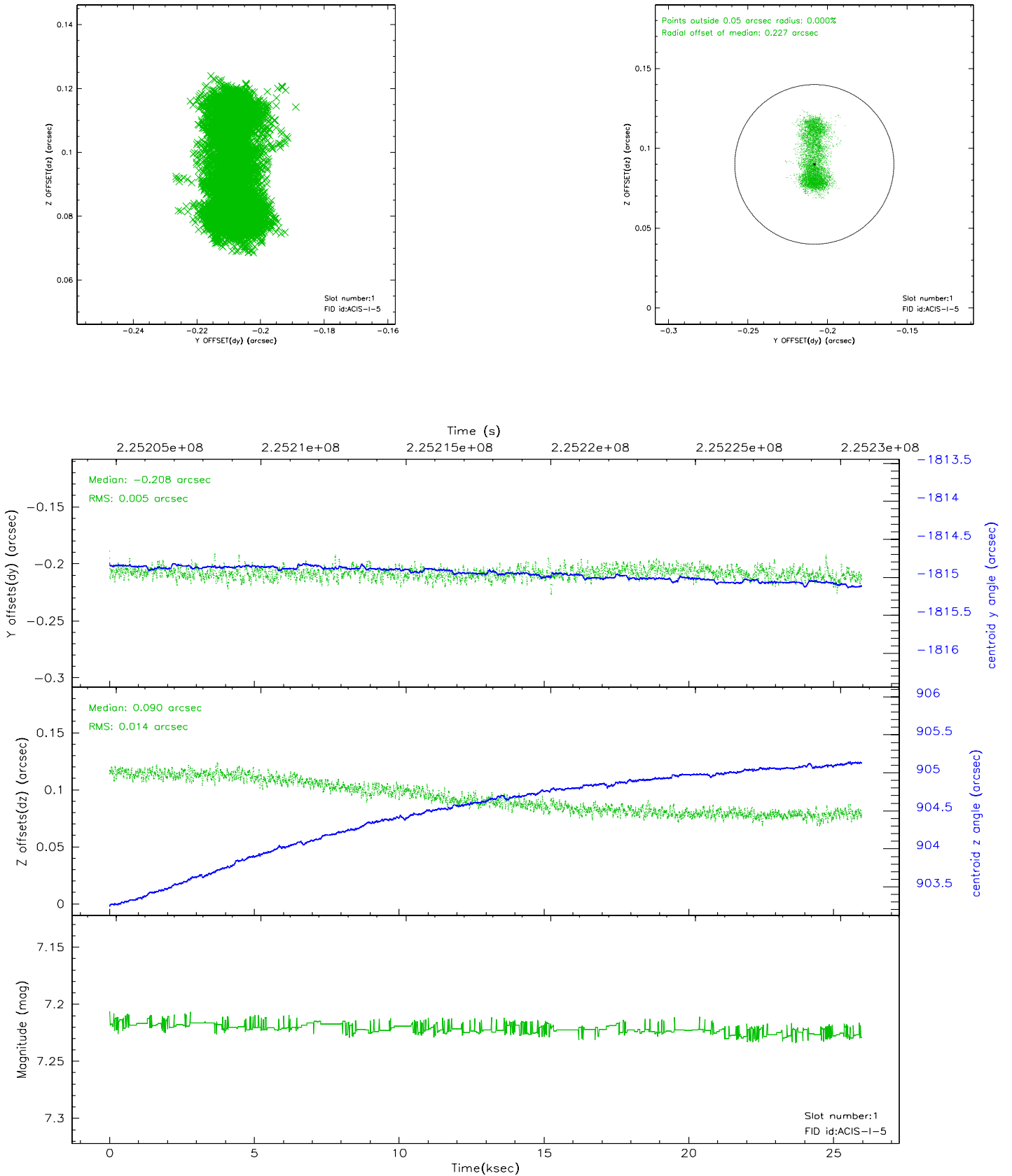


2.5 FID Slots

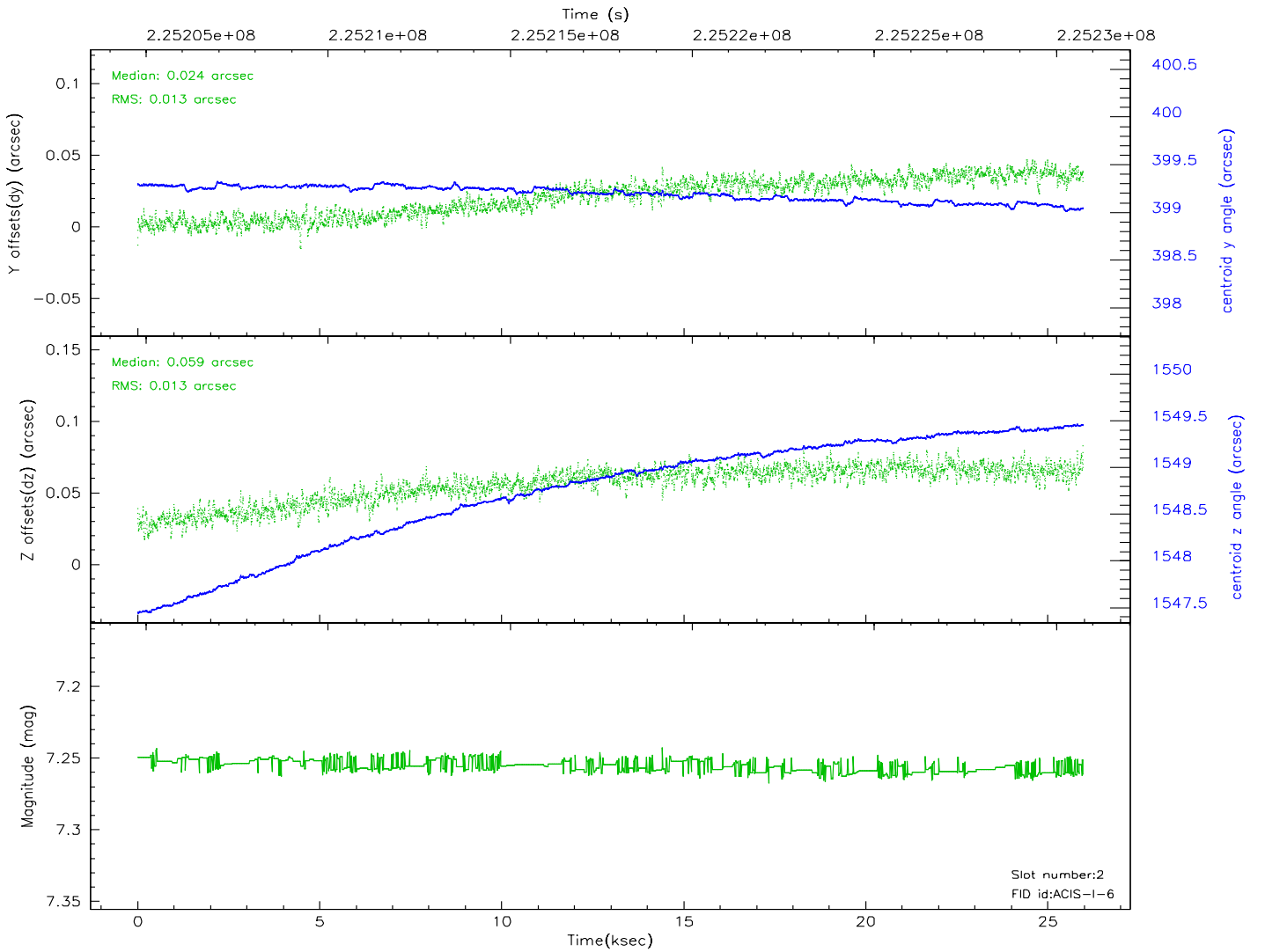
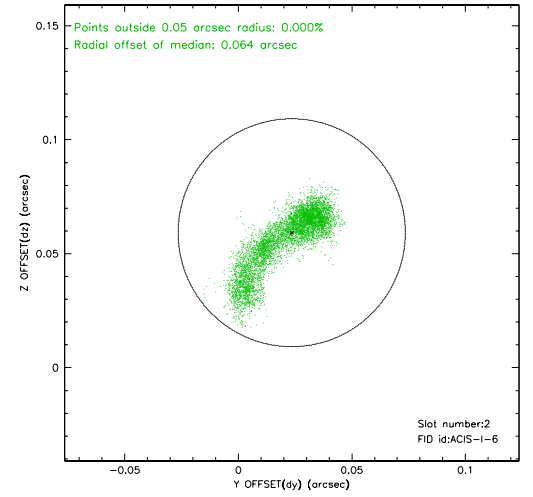
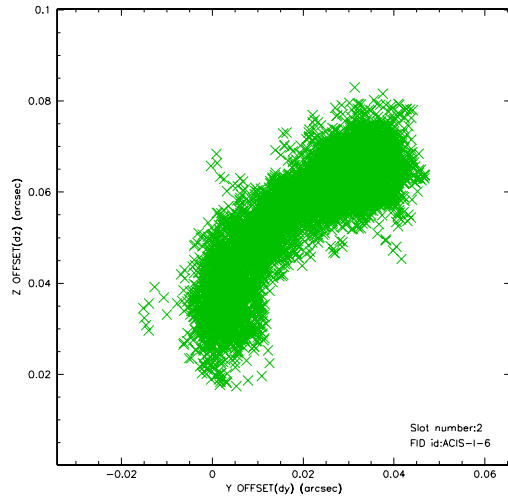
2.5.1 Slot 0



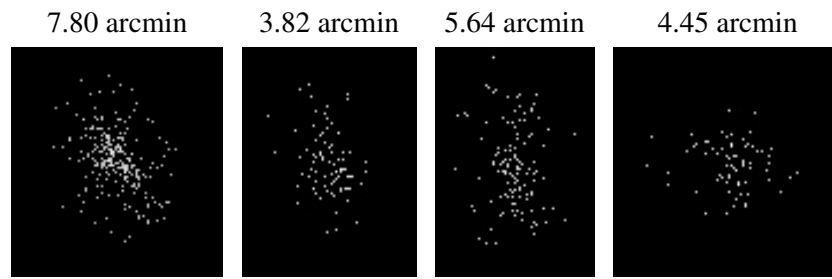
2.5.2 Slot 1



2.5.3 Slot 2



3 Point Sources



A Summary

A.1 Status

V&V Scientist	Beth Sundheim
V&V Date (YYYY-MM-DD)	2006.02.24
V&V Edition	1
V&V Disposition and Status	OK
V&V Charge Time	25.56561

A.2 Comments