

# V&V Reference Report

## L2 ASCDS Version : 7.6.7

Observation 5771 - L2 Version 002  
Chandra X-Ray Center

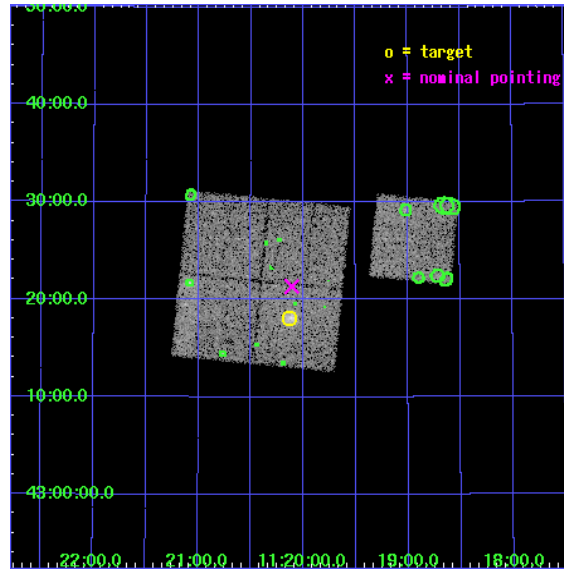
L2 Processing Date: Feb 16 2006

## Contents

<b>1</b>	<b>Front</b>	<b>2</b>
<b>2</b>	<b>OBI</b>	<b>3</b>
2.1	OBI . . . . .	3
2.1.1	Images . . . . .	3
2.1.2	Bias . . . . .	3
2.1.3	Parameters . . . . .	4
2.1.4	Events . . . . .	4
2.2	Compared Parameters . . . . .	5
2.3	Aspect . . . . .	6
2.4	Star Slots . . . . .	9
2.4.1	Slot 3 . . . . .	9
2.4.2	Slot 4 . . . . .	10
2.4.3	Slot 5 . . . . .	11
2.4.4	Slot 6 . . . . .	12
2.4.5	Slot 7 . . . . .	13
2.5	FID Slots . . . . .	14
2.5.1	Slot 0 . . . . .	14
2.5.2	Slot 1 . . . . .	15
2.5.3	Slot 2 . . . . .	16
<b>3</b>	<b>Point Sources</b>	<b>17</b>
<b>A</b>	<b>Summary</b>	<b>18</b>
A.1	Status . . . . .	18
A.2	Comments . . . . .	18

# 1 Front

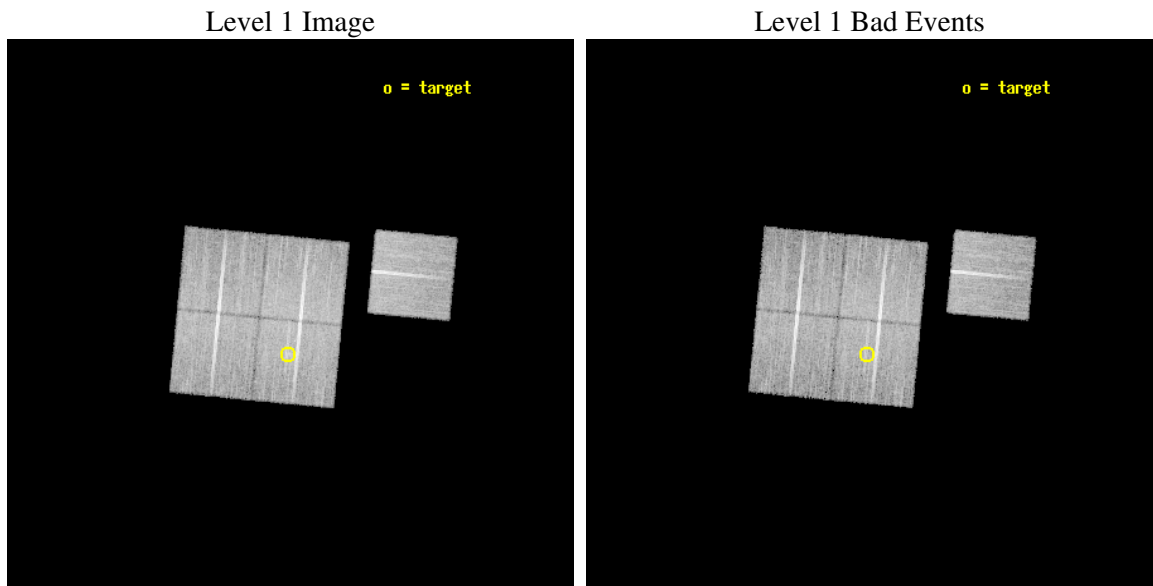
seq_num	800484
obs_id	5771
title	Chandra observations of high-redshift clusters of galaxies from the 400 Square Degrees ROSAT PSPC survey
observer	Dr. Steven Murray
object	cl1120+4318
dtcycle	0
cycle	P
ra_targ	170.031667
dec_targ	43.301944
ra_nom	170.02716299929
dec_nom	43.356133953207
roll_nom	95.571407942928
revision	2
ontime	20100.399961352
livetime	19837.773438158
ontime0	20097.258991092
ontime1	20100.399961352
ontime2	20097.258981109
ontime3	20100.399961352
ontime6	20097.258981109
l2events	51898



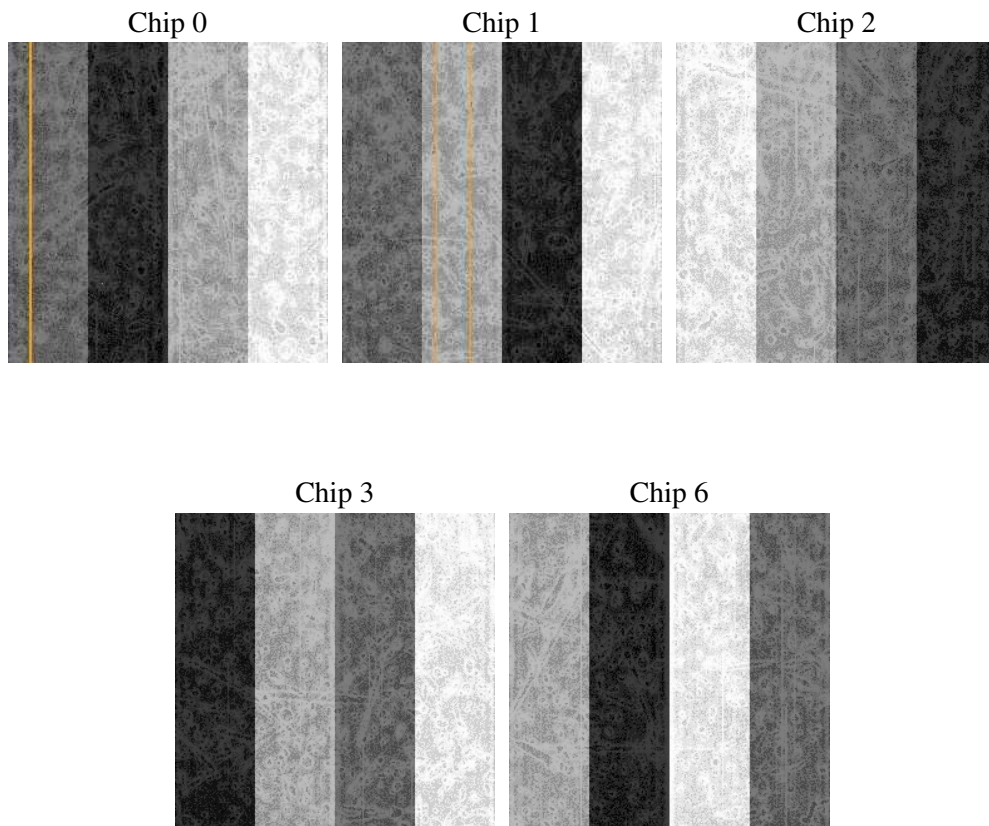
## 2 OBI

### 2.1 OBI

#### 2.1.1 Images



#### 2.1.2 Bias



### 2.1.3 Parameters

obi_num	0
ascdsver	7.6.7
caldbver	3.2.1
date	2006-02-16T17:36:04
revision	2

sched_exp_time	19969.935000
ontime	21641.546746045
ontime0	21638.405775785
ontime1	21641.546746045
ontime2	21638.405765802
ontime3	21641.546746045
ontime6	21638.405765802
l1events	635714

### 2.1.4 Events

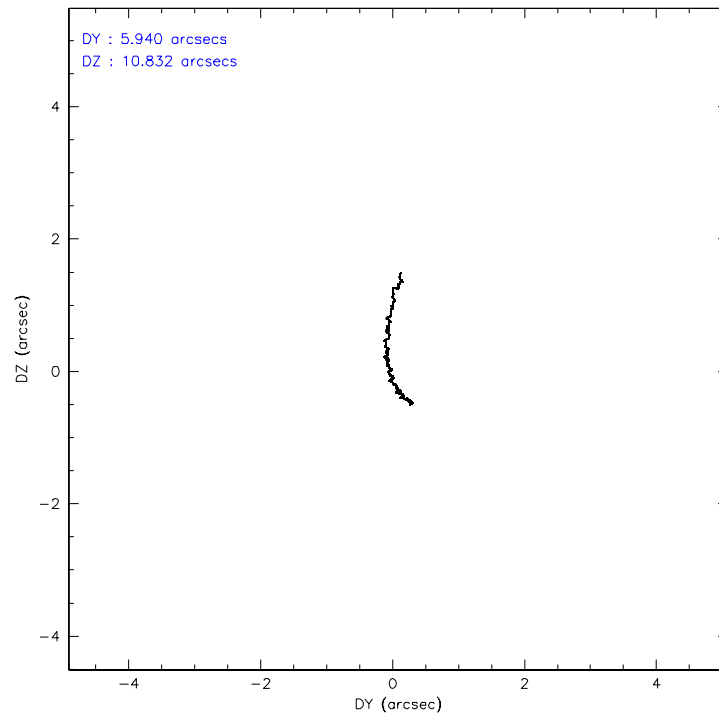
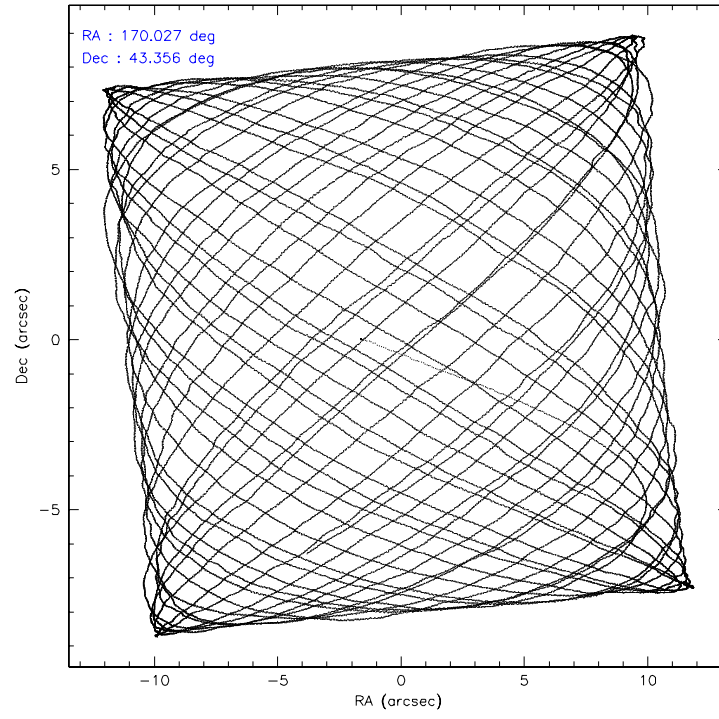
	ccd 0	ccd 1	ccd 2	ccd 3	ccd 6
level 1 events	118954	122048	135306	130357	129049
rejected events	107157	108747	123372	117538	116971
rejected %	90%	89%	91%	90%	90%

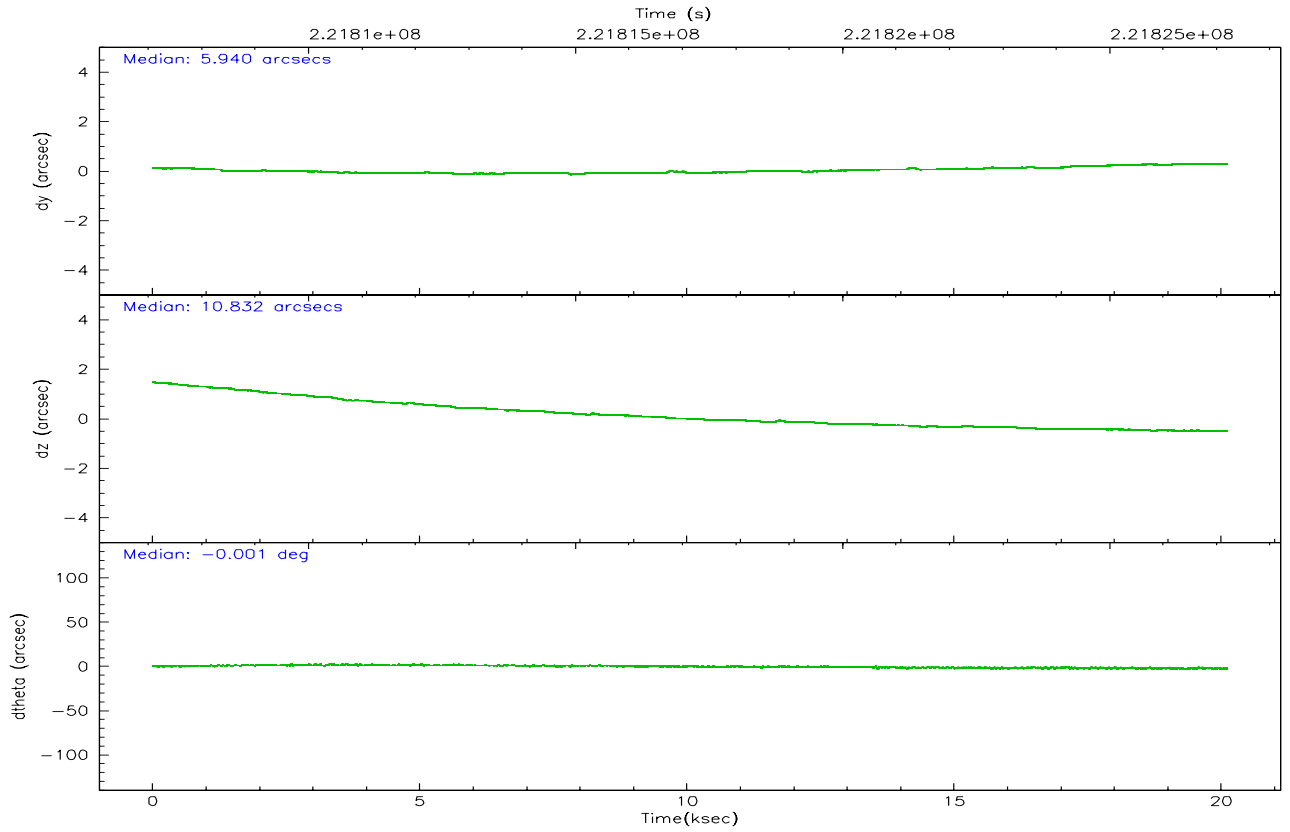
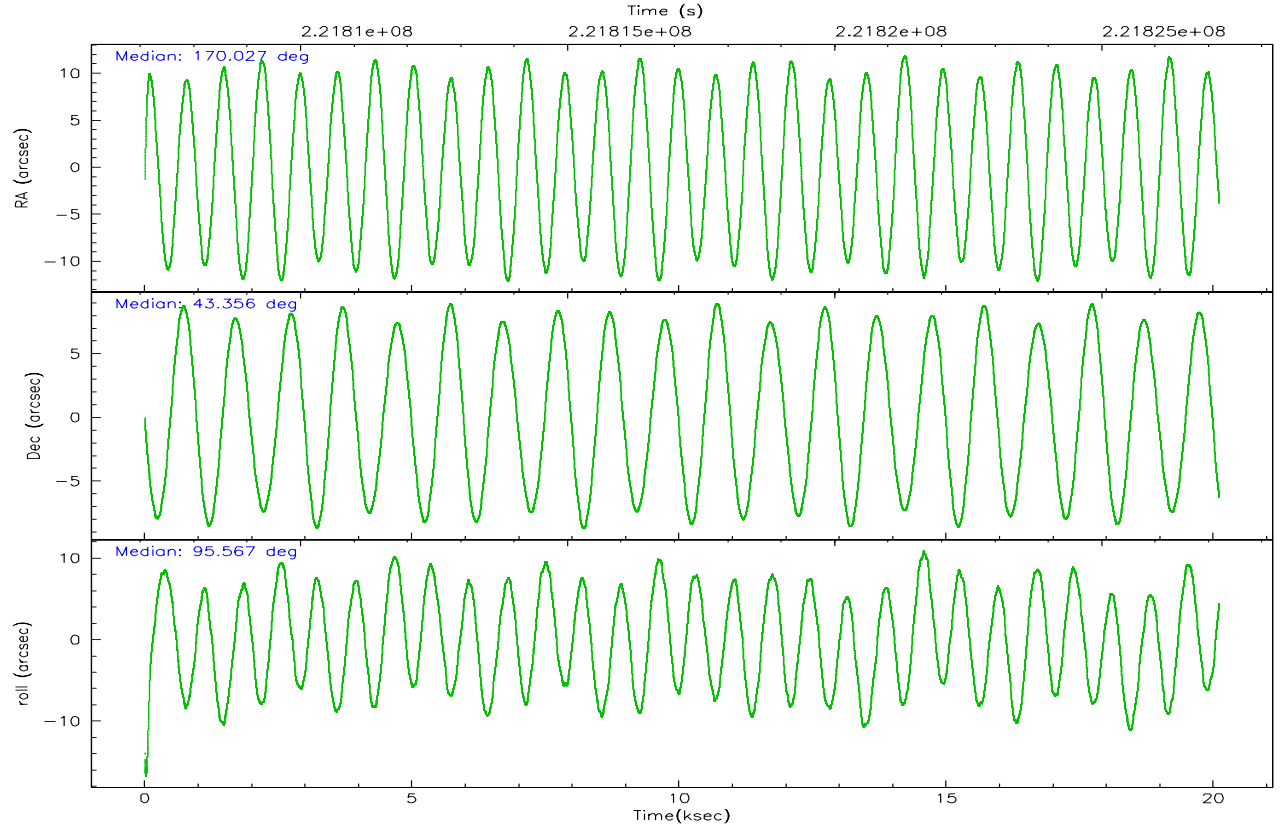
	ccd 0	ccd 1	ccd 2	ccd 3	ccd 6
grade 0 events	4246	5249	4708	5644	4555
	3%	4%	3%	4%	3%
grade 1 events	67	66	64	87	50
	0%	0%	0%	0%	0%
grade 2 events	2986	3044	3037	2737	2697
	2%	2%	2%	2%	2%
grade 3 events	1495	1588	1333	1483	1451
	1%	1%	0%	1%	1%
grade 4 events	1376	1600	1439	1401	1503
	1%	1%	1%	1%	1%
grade 5 events	4513	4803	4342	5204	5140
	3%	3%	3%	3%	3%
grade 6 events	2585	2829	2325	2431	2791
	2%	2%	1%	1%	2%
grade 7 events	101686	102869	118058	111370	110862
	85%	84%	87%	85%	85%

## 2.2 Compared Parameters

Parameter	Planned	Actual	Parameter	Planned	Actual
Instrument	ACIS	ACIS	Obspar format version number	6	6
Detector	ACIS-01236	ACIS-01236	Obspar file type	PREDICTED	ACTUAL
Grating	NONE	NONE	Obspar update status	NONE	UPDATED
Data mode	VFAINT	VFAINT	On-chip summing requested	N	N
Observation mode	POINTING	POINTING	Subarray requested	NONE	NONE
Pointing RA	170.049185	170.0271629992904	Alternating exposures requested	N	N
Pointing Dec	43.333940	43.35613395320743	Primary exposure time	0.000000	3.1
Pointing Roll	95.347617	95.57140794292751			
SIM focus pos (mm)	-0.782348	-0.7809083437167272			
SIM defocus (mm)	0	0.001439871863259334			
SIM translation stage pos (mm)	-225.840463	-225.8433433320239			
SIM translation stage offset (mm)	-7.752	-7.749109670905796			
Observation start time	221807230.184000	221805494.4892			
Observation start date	2005-01-11T05:06:06	2005-01-11T04:38:14			
Observation end time	221827200.184000	221827428.46519			
Observation end date	2005-01-11T10:38:56	2005-01-11T10:43:48			
Read mode	TIMED	TIMED			

## 2.3 Aspect





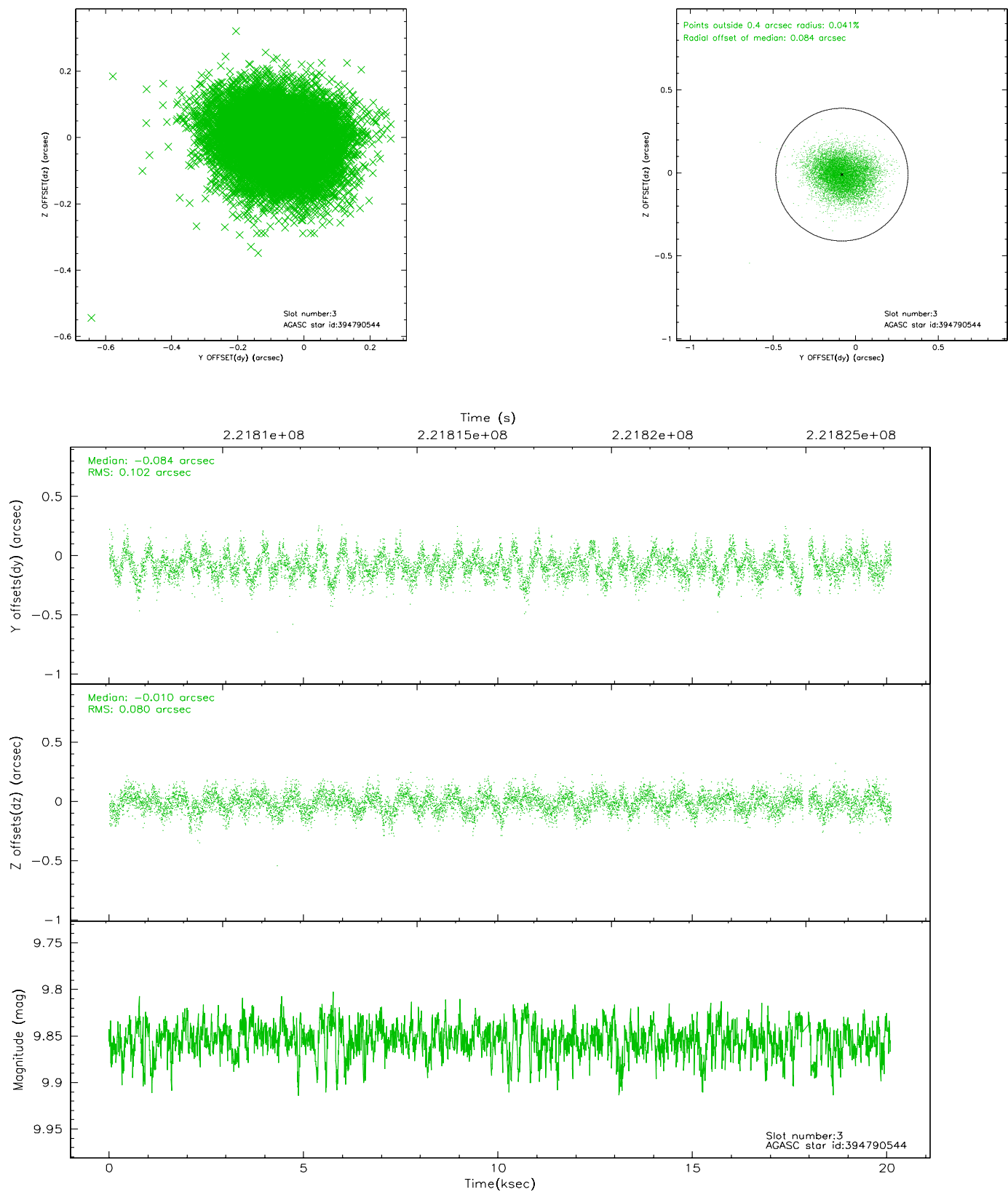
### Slot Statistics

slot	status	id	mag	n_pts	med_dy	med_dz	dr1	dr2	ra	dec	mean_y	mean_z
0	FID	ACIS-I-1	7.24	4904	0.099	-0.080	0.011	0.018	0.000000	0.000000	933.67	-993.68
1	FID	ACIS-I-5	7.22	4904	-0.210	0.095	0.012	0.017	0.000000	0.000000	-1814.61	903.91
2	FID	ACIS-I-6	7.25	4903	0.020	0.057	0.015	0.033	0.000000	0.000000	398.98	1548.55
3	GUIDE	394790544	9.85	9728	-0.084	-0.010	0.138	0.222	169.650924	43.839148	1909.60	860.16
4	GUIDE	394790880	10.07	9795	-0.104	0.077	0.130	0.212	169.505431	43.803975	1821.16	1248.84
5	GUIDE	394802352	9.20	9803	0.184	-0.142	0.105	0.169	169.334978	42.806785	-1705.38	2054.45
6	GUIDE	395185304	8.94	9808	0.049	0.188	0.085	0.137	170.919785	43.120762	-965.61	-2206.17
7	GUIDE	394791080	9.77	9800	-0.044	-0.114	0.109	0.176	169.075596	43.782733	1859.12	2367.34

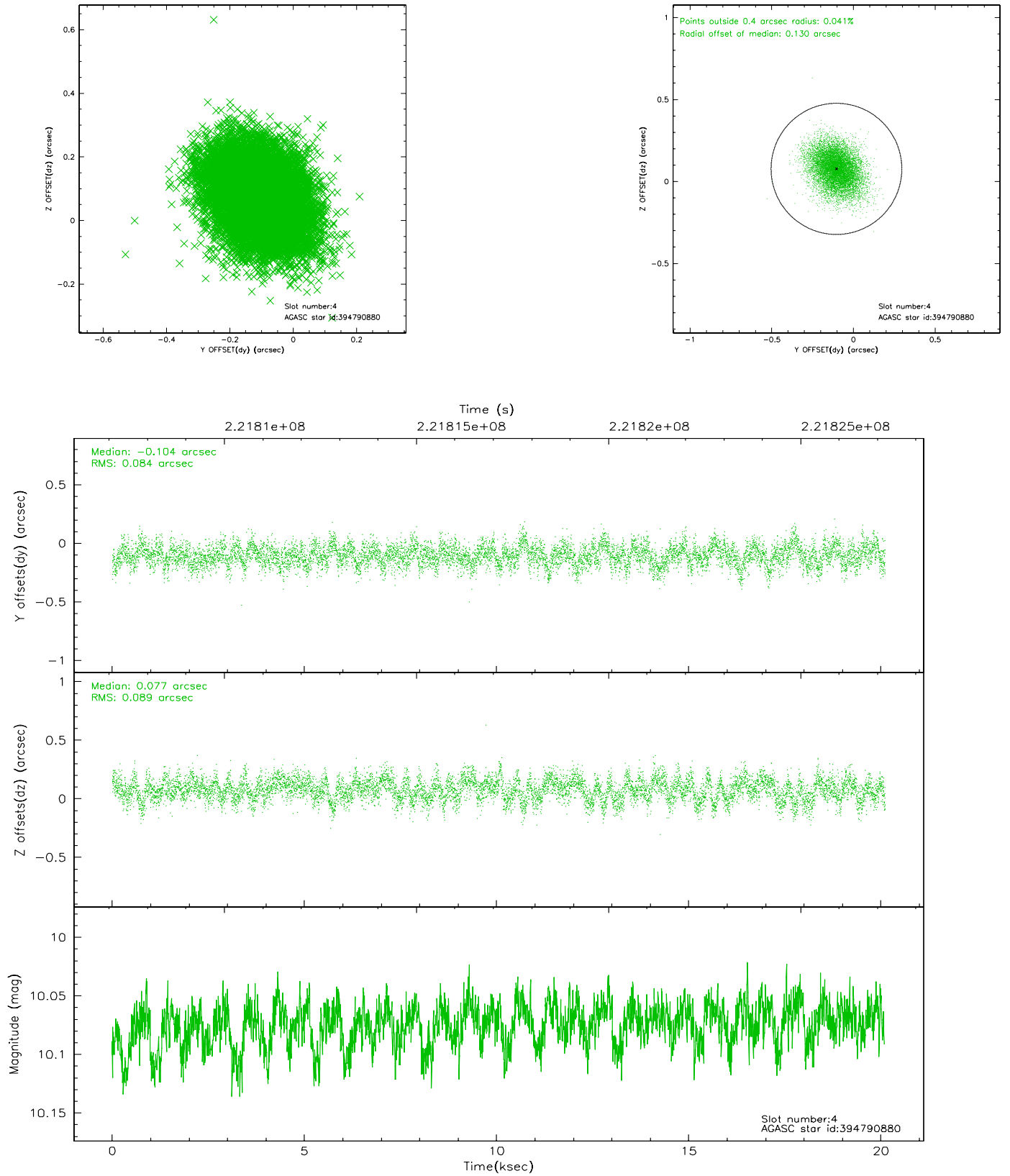


## 2.4 Star Slots

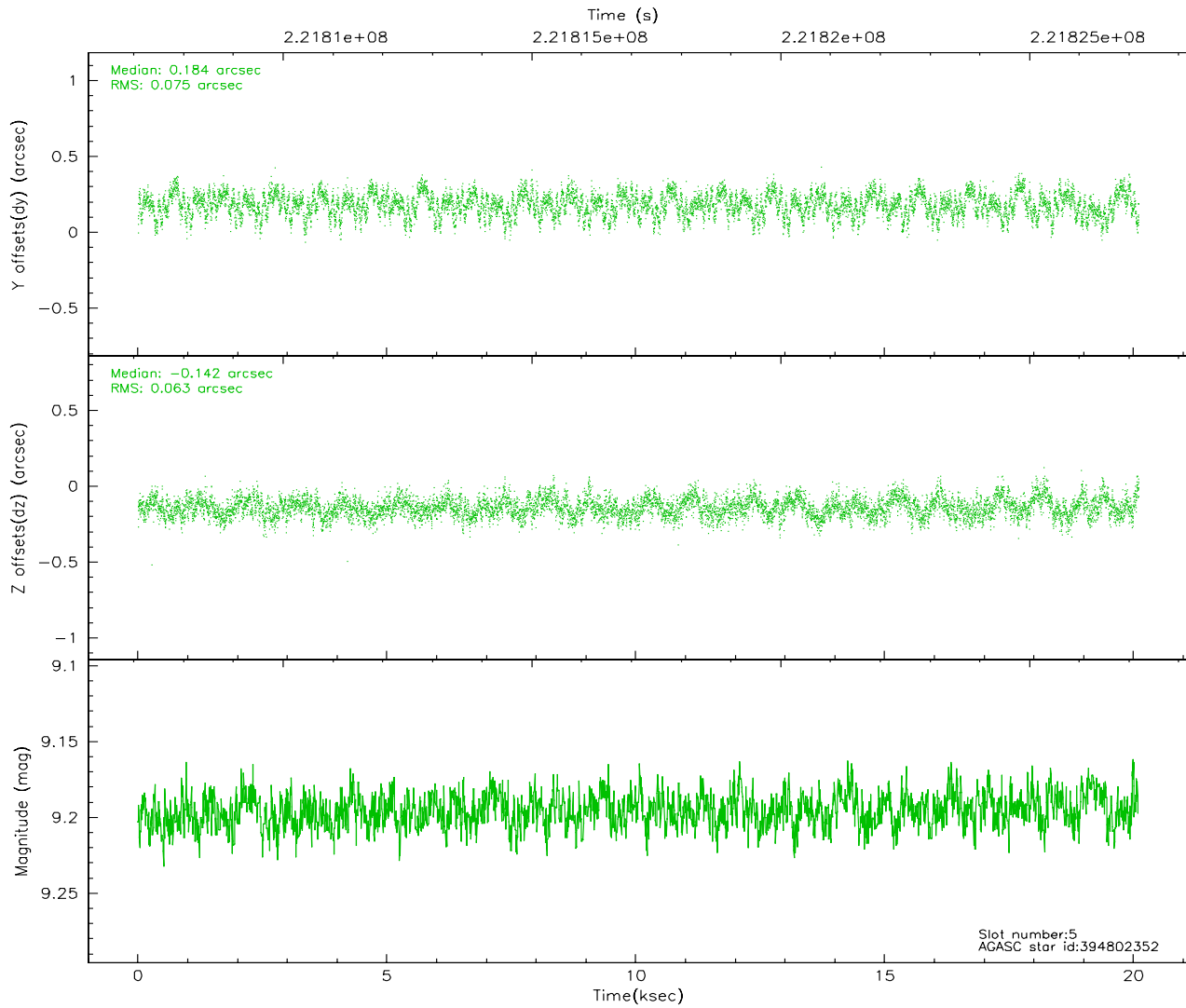
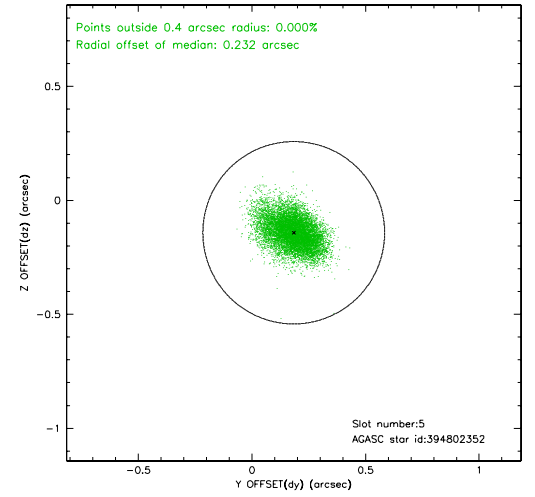
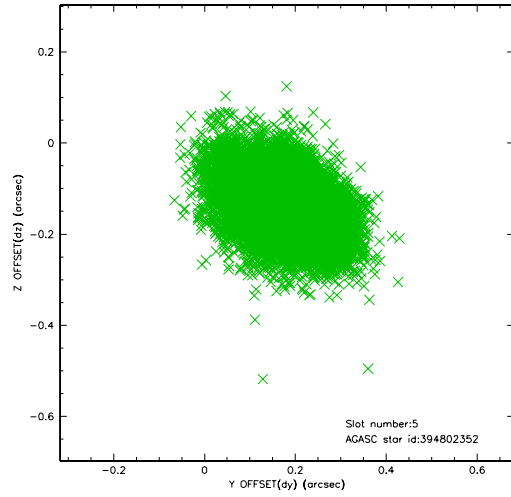
### 2.4.1 Slot 3



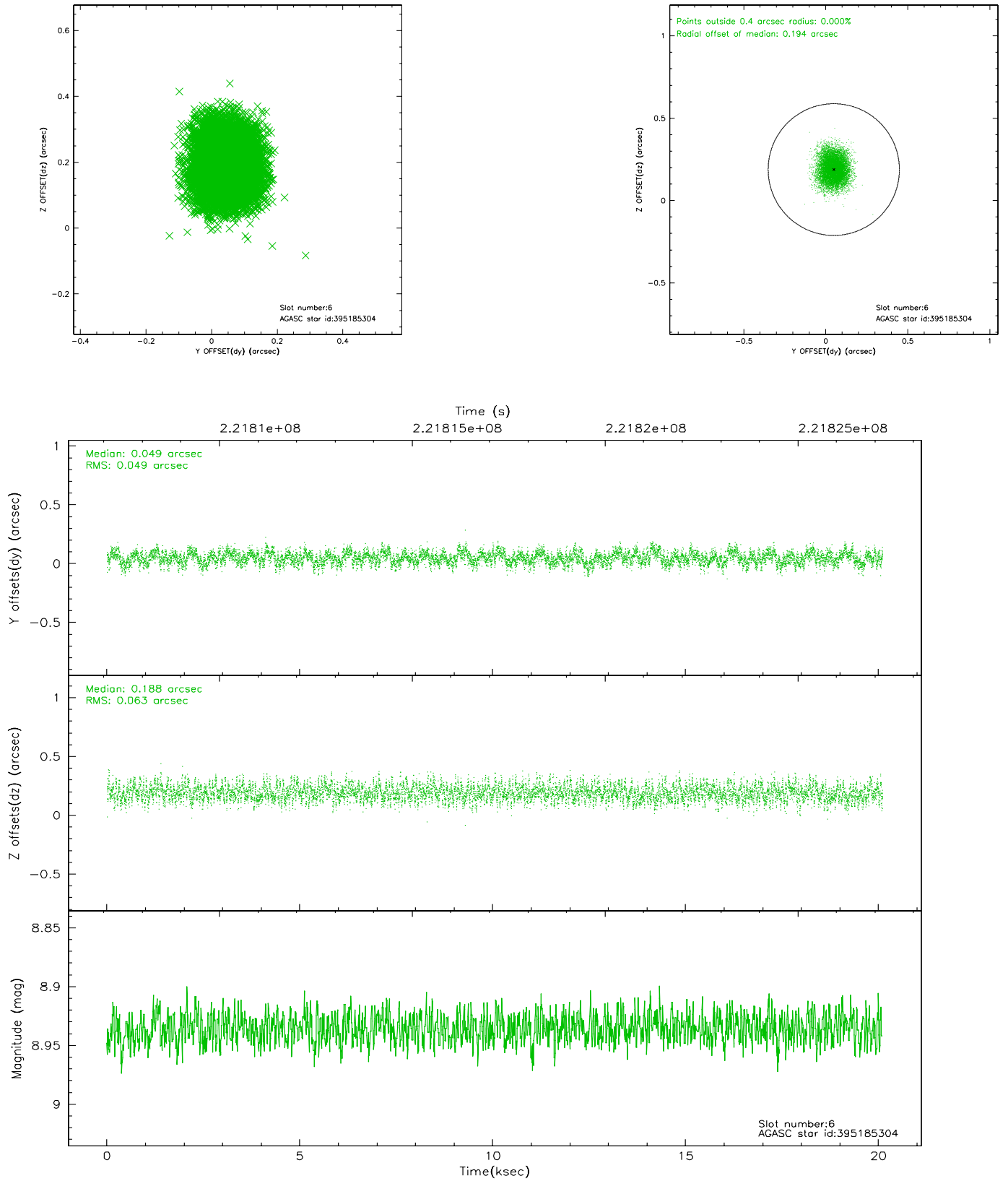
## 2.4.2 Slot 4



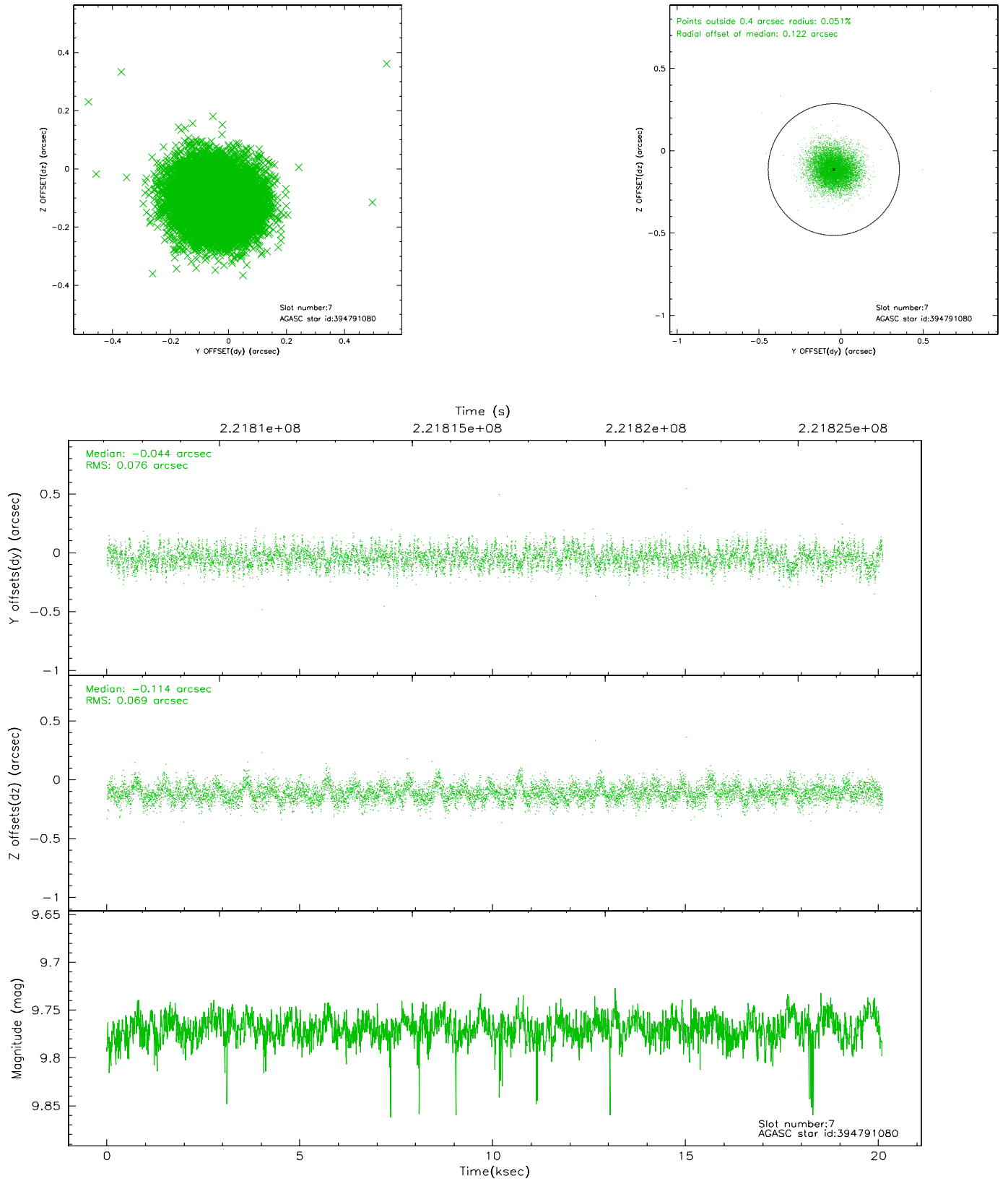
### 2.4.3 Slot 5



## 2.4.4 Slot 6

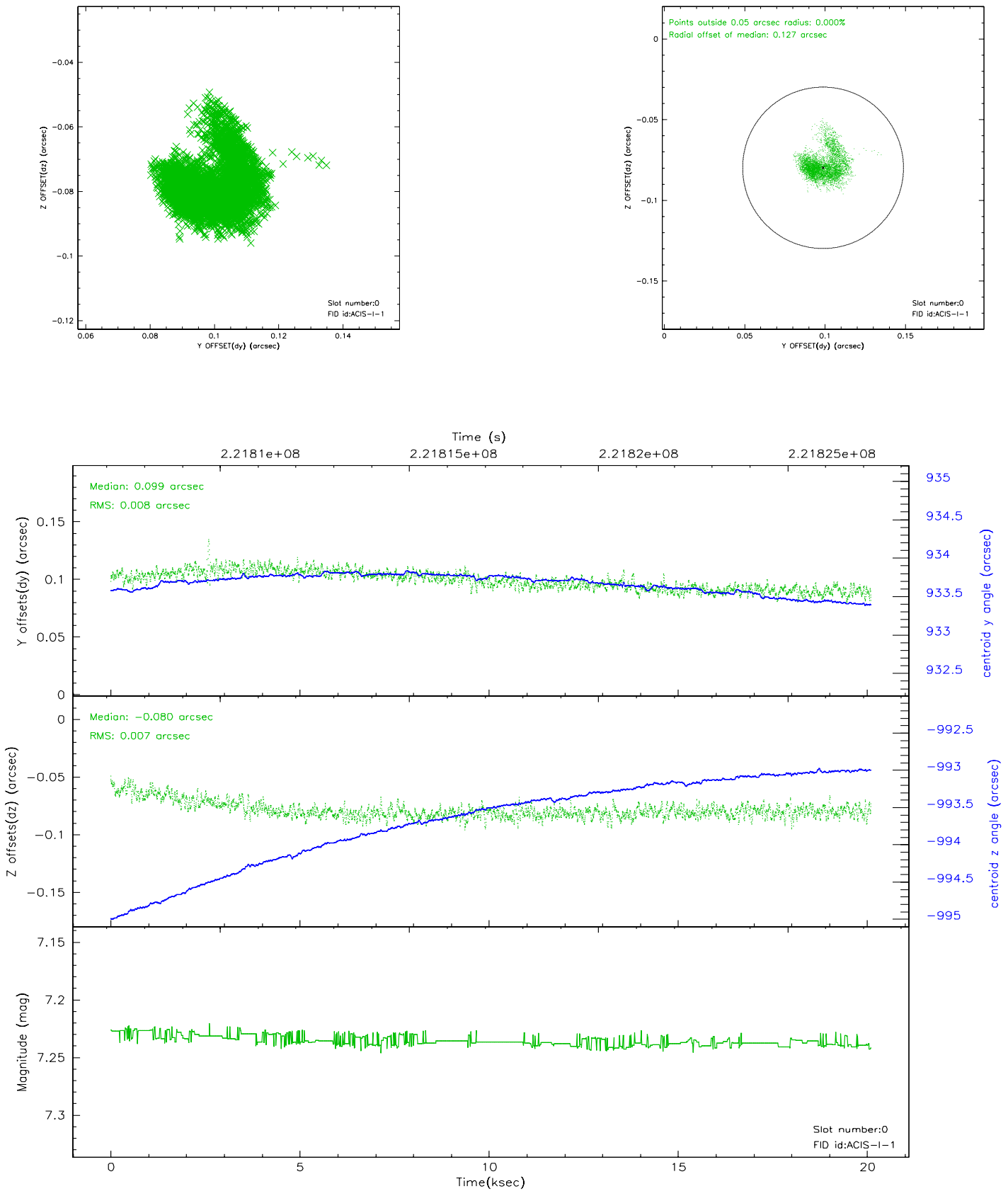


## 2.4.5 Slot 7

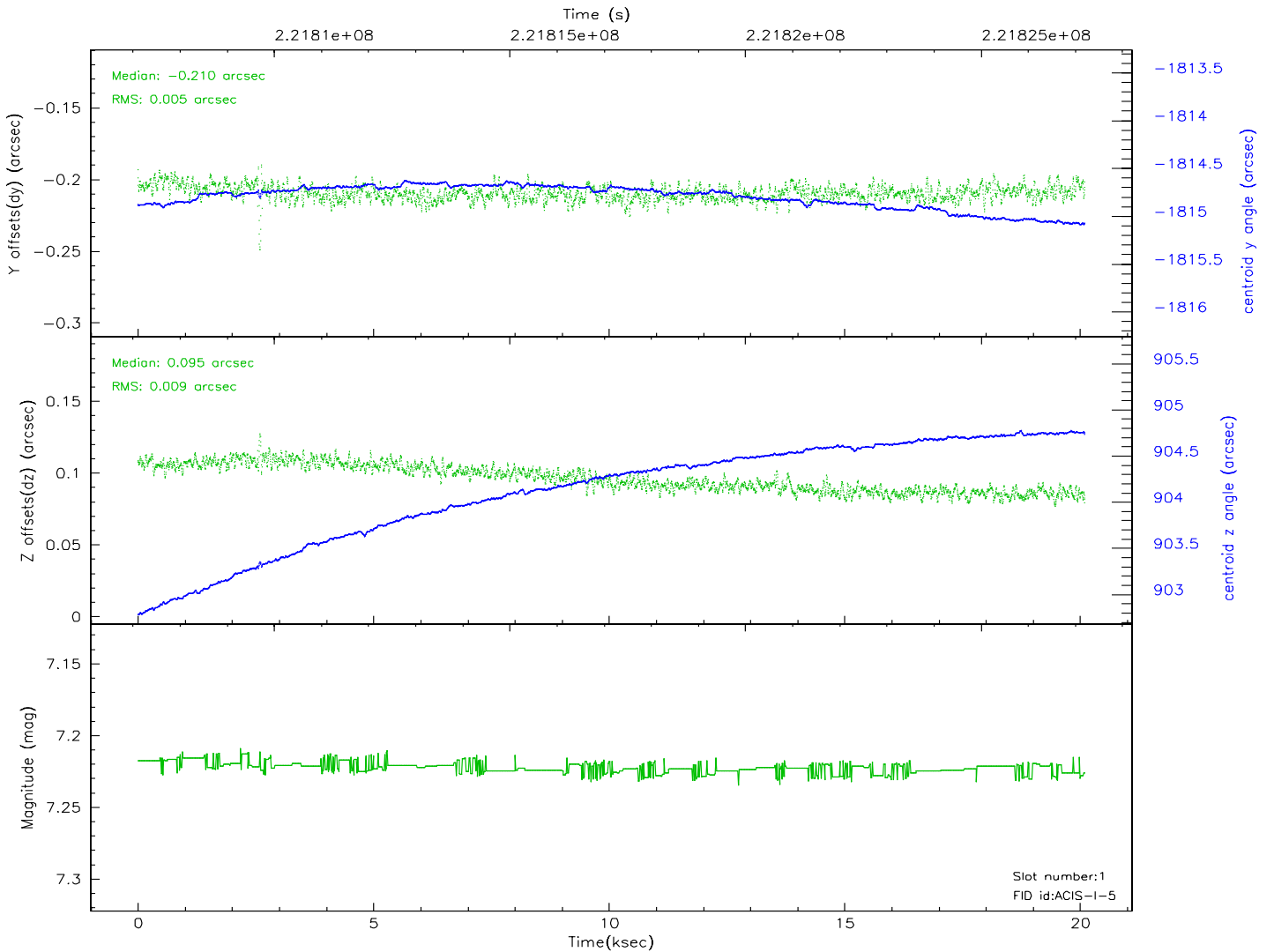
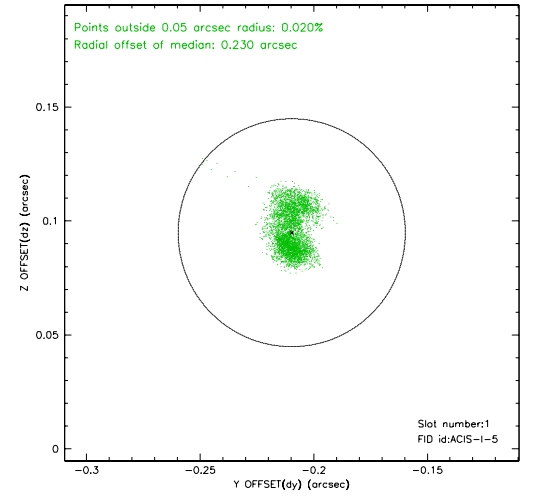
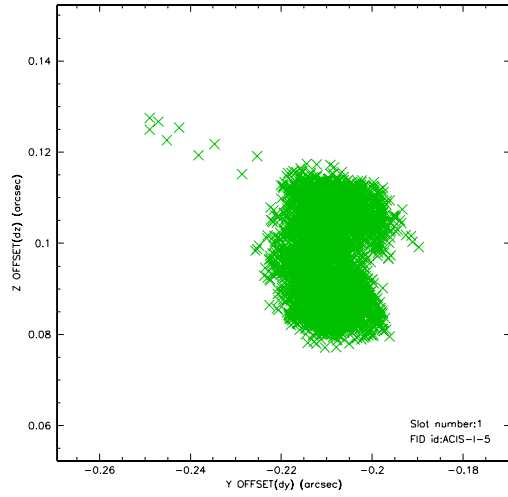


## 2.5 FID Slots

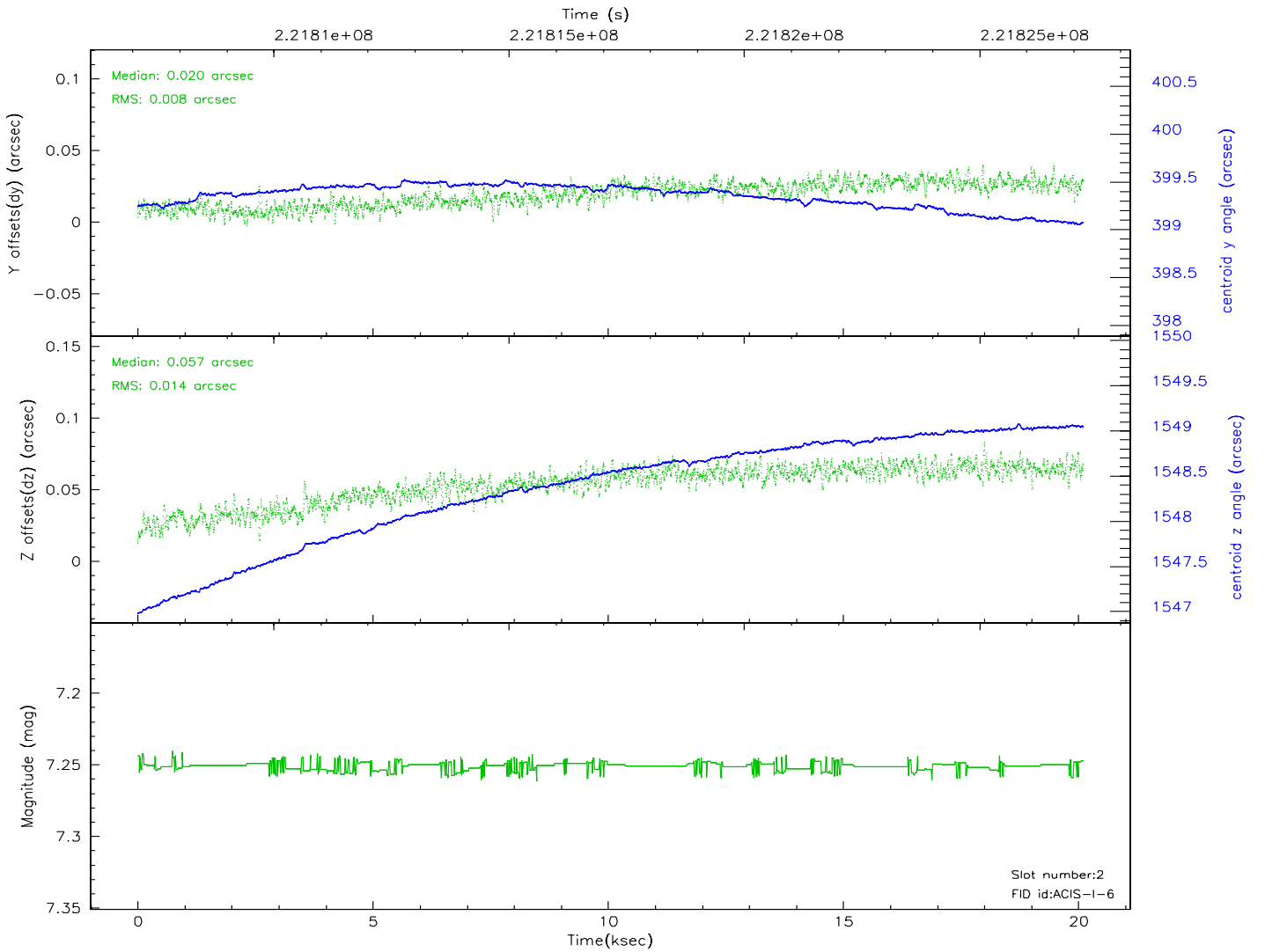
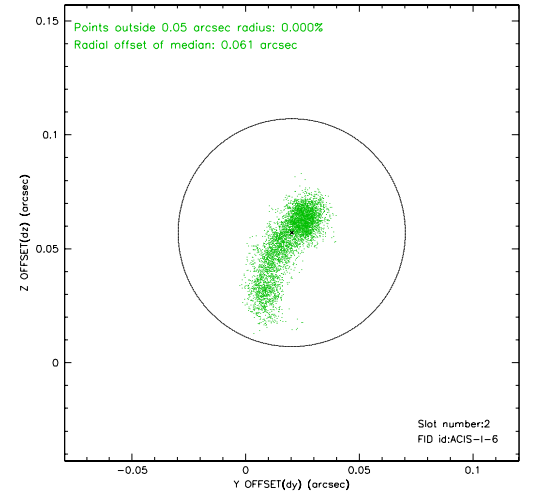
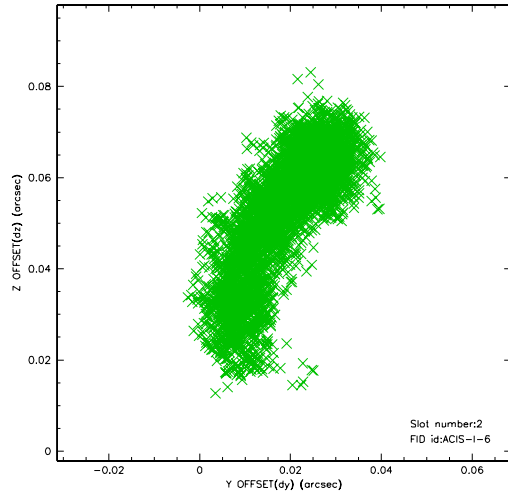
### 2.5.1 Slot 0



## 2.5.2 Slot 1

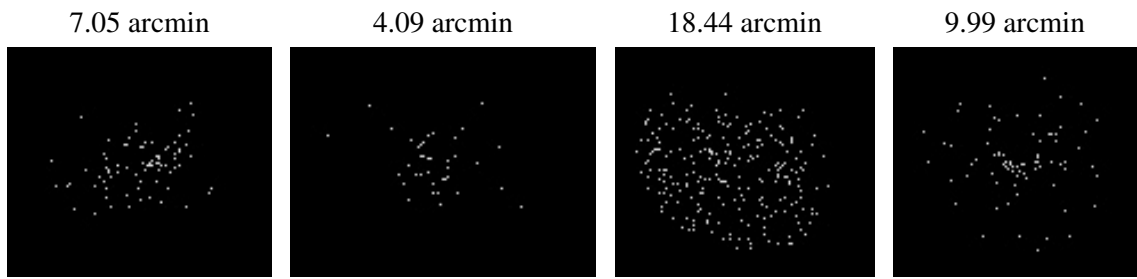


### 2.5.3 Slot 2





### 3 Point Sources



## A Summary

### A.1 Status

V&V Scientist	Beth Sundheim
V&V Date (YYYY-MM-DD)	2006.02.16
V&V Edition	1
V&V Disposition and Status	OK
V&V Charge Time	20.10039

### A.2 Comments

Charge time:

Using existing charge time of 20.10039.

Focal plane temperature rises sharply during observation.