

V&V Reference Report

L2 ASCDS Version : 8.5.1

Observation 5769 - L2 Version 3
Chandra X-Ray Center

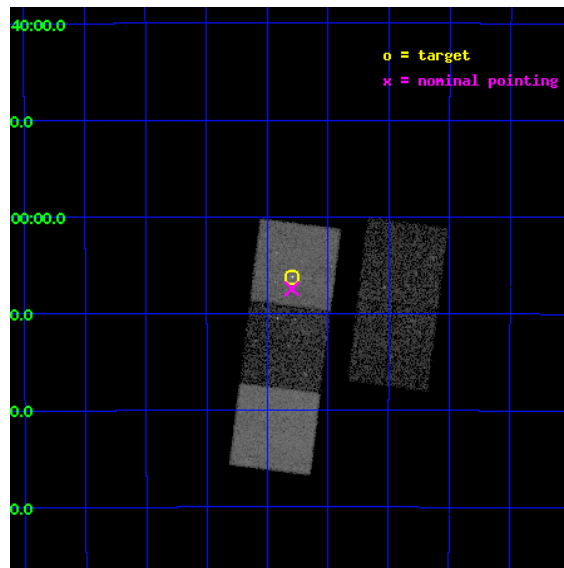
L2 Processing Date : Dec 16 2012

Contents

1	Front	2
2	OBI	3
2.1	OBI	3
2.1.1	Images	3
2.1.2	Bias	3
2.1.3	Parameters	4
2.1.4	Events	4
2.2	Compared Parameters	5
2.3	Aspect	6
2.4	Star Slots	9
2.4.1	Slot 3	9
2.4.2	Slot 4	10
2.4.3	Slot 5	11
2.4.4	Slot 6	12
2.4.5	Slot 7	13
2.5	FID Slots	14
2.5.1	Slot 0	14
2.5.2	Slot 1	15
2.5.3	Slot 2	16
A	Summary	17
A.1	Status	17
A.2	Comments	17

1 Front

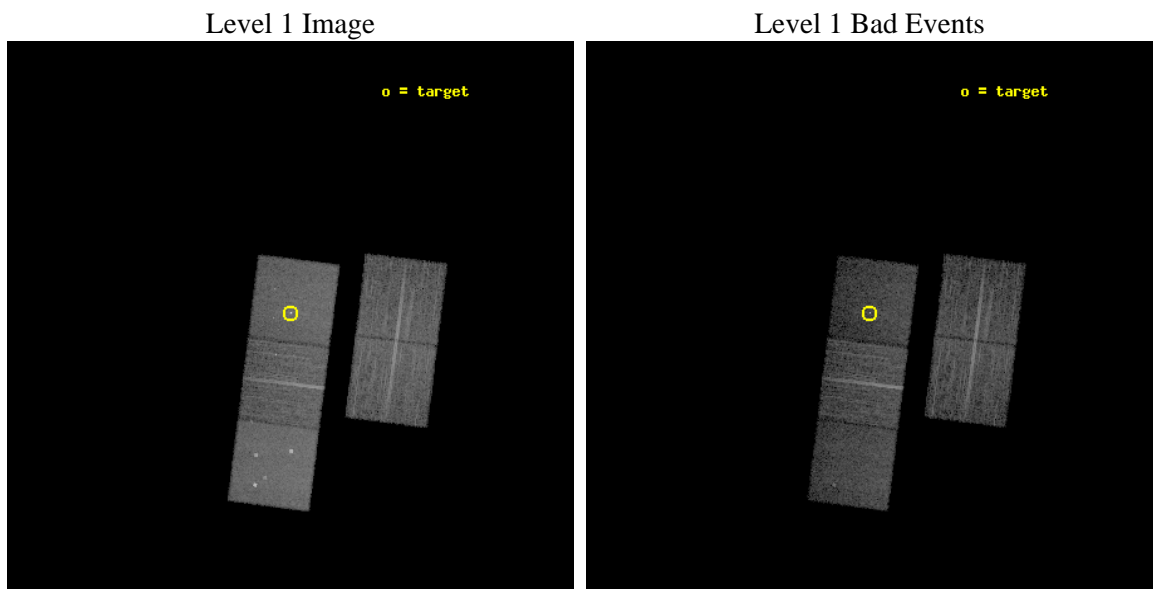
seq_num	800482	Sequence number
obs_id	5769	Observation id
title	X-ray emission from clusters of galaxies from the REFLEX sample.	P
observer	Dr. Peter Predehl	Principal investigator
object	RXCJ2251.7-3206	Source name
dtcycle	0	
cycle	P	events from which exps? Prim/Second/Both
ra_targ	342.948333	Observer's specified target RA [deg]
dec_targ	-32.103389	Observer's specified target Dec [deg]
ra_nom	342.94933857529	Nominal RA [deg]
dec_nom	-32.124195660702	Nominal Dec [deg]
roll_nom	277.17924949176	Nominal Roll [deg]
revision	3	Processing version of data
ontime	10422.199979931	Sum of GTIs [s]
livetime	10286.026264481	Livetime [s]
ontime2	10415.918079376	Sum of GTIs [s]
ontime3	10415.918029577	Sum of GTIs [s]
ontime5	10422.199979931	Sum of GTIs [s]
ontime6	10422.199979931	Sum of GTIs [s]
ontime7	10422.199979931	Sum of GTIs [s]
l2events	92934	Number of level 2 events



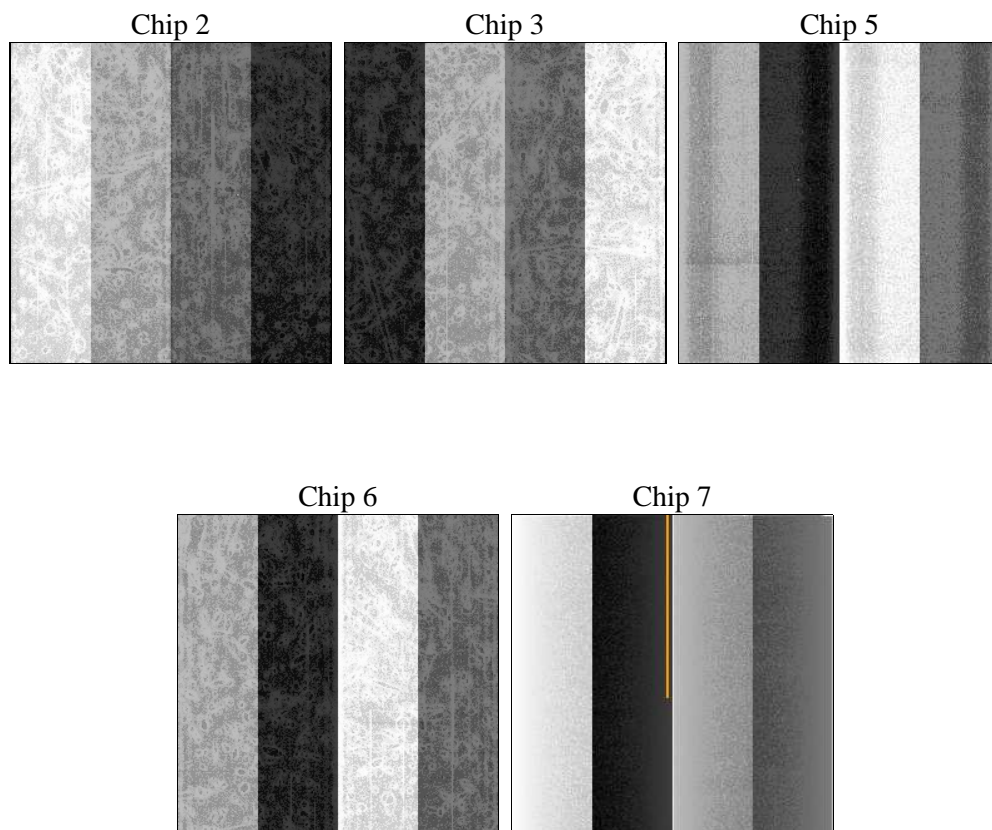
2 OBI

2.1 OBI

2.1.1 Images



2.1.2 Bias



2.1.3 Parameters

obi_num	0	Obi number	sched_exp_time	10238.261000	[s] Scheduled observation exposure time
ascdsver	8.5.1	Processing system revision	ontime	10422.199979931	Sum of GTIs [s]
caldsver	4.5.5	 	ontime2	10415.918079376	Sum of GTIs [s]
date	2012-12-15T20:47:42	Date and time of file creation	ontime3	10415.918029577	Sum of GTIs [s]
revision	3	Processing version of data	ontime5	10422.199979931	Sum of GTIs [s]
			ontime6	10422.199979931	Sum of GTIs [s]
			ontime7	10422.199979931	Sum of GTIs [s]
			l1events	385633	Number of level 1 events

2.1.4 Events

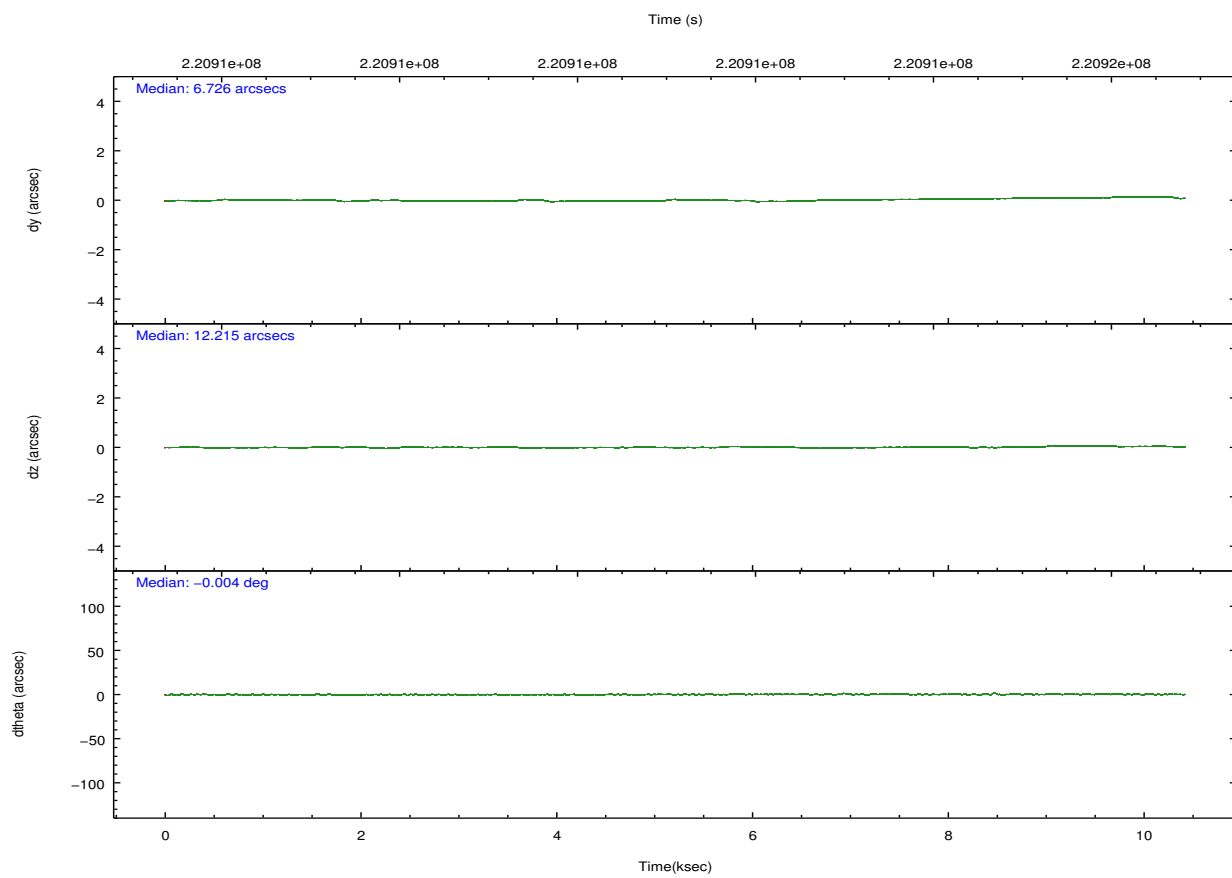
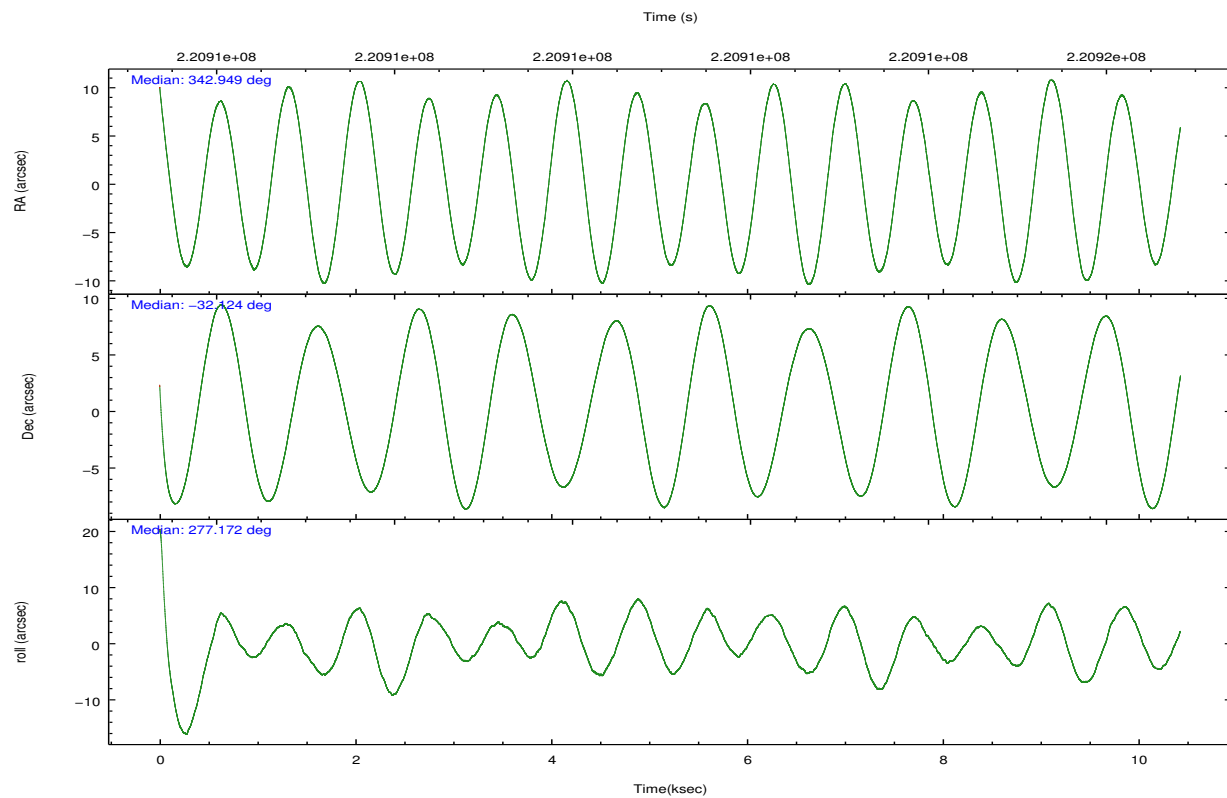
	ccd 2	ccd 3	ccd 5	ccd 6	ccd 7
level 1 events	71906	65388	96610	71260	80469
rejected events	65559	59346	49210	63564	44688
rejected %	91%	90%	50%	89%	55%

	ccd 2	ccd 3	ccd 5	ccd 6	ccd 7
grade 0 events	2378	2257	7435	3172	3894
	3%	3%	7%	4%	4%
grade 1 events	24	32	236	39	197
	0%	0%	0%	0%	0%
grade 2 events	1498	1347	14470	1578	7590
	2%	2%	14%	2%	9%
grade 3 events	736	727	2140	862	3500
	1%	1%	2%	1%	4%
grade 4 events	769	769	2032	803	3539
	1%	1%	2%	1%	4%
grade 5 events	2144	2514	7485	2790	8555
	2%	3%	7%	3%	10%
grade 6 events	1271	1211	23676	1619	18962
	1%	1%	24%	2%	23%
grade 7 events	63086	56531	39136	60397	34232
	87%	86%	40%	84%	42%

2.2 Compared Parameters

Parameter	Planned	Actual	Parameter	Planned	Actual
Instrument	ACIS	ACIS	Obspar format version number	7	7
Detector	ACIS-23567	ACIS-23567	Obspar file type	PREDICTED	ACTUAL
Grating	NONE	NONE	Obspar update status	NONE	UPDATED
Data mode	VFAINT	VFAINT	Number of optional ACIS chips dropped	0	0
Observation mode	POINTING	POINTING	On-chip summing requested	N	N
[deg] Pointing RA	342.929595	342.9493385752862	Subarray requested	NONE	NONE
[deg] Pointing Dec	-32.102657	-32.12419566070214	Alternating exposures requested	N	N
[deg] Pointing Roll	277.012105	277.1792494917627	[s] Primary exposure time	0.000000	3.1
[mm] SIM focus pos	-0.684267	-0.6828225247311905			
[mm] SIM defocus	0	0.001444936568705701			
[mm] SIM translation stage pos	-190.132523	-190.1400660498719			
[mm] SIM translation stage offset	0	0.00754346686406393			
[s] Observation start time (MET)	220906073.184000	220904833.6111			
Observation start date	2004-12-31T18:46:49	2004-12-31T18:27:13			
[s] Observation end time (MET)	220916311.184000	220916526.29913			
Observation end date	2004-12-31T21:37:27	2004-12-31T21:42:06			
Read mode	TIMED	TIMED			

2.3 Aspect

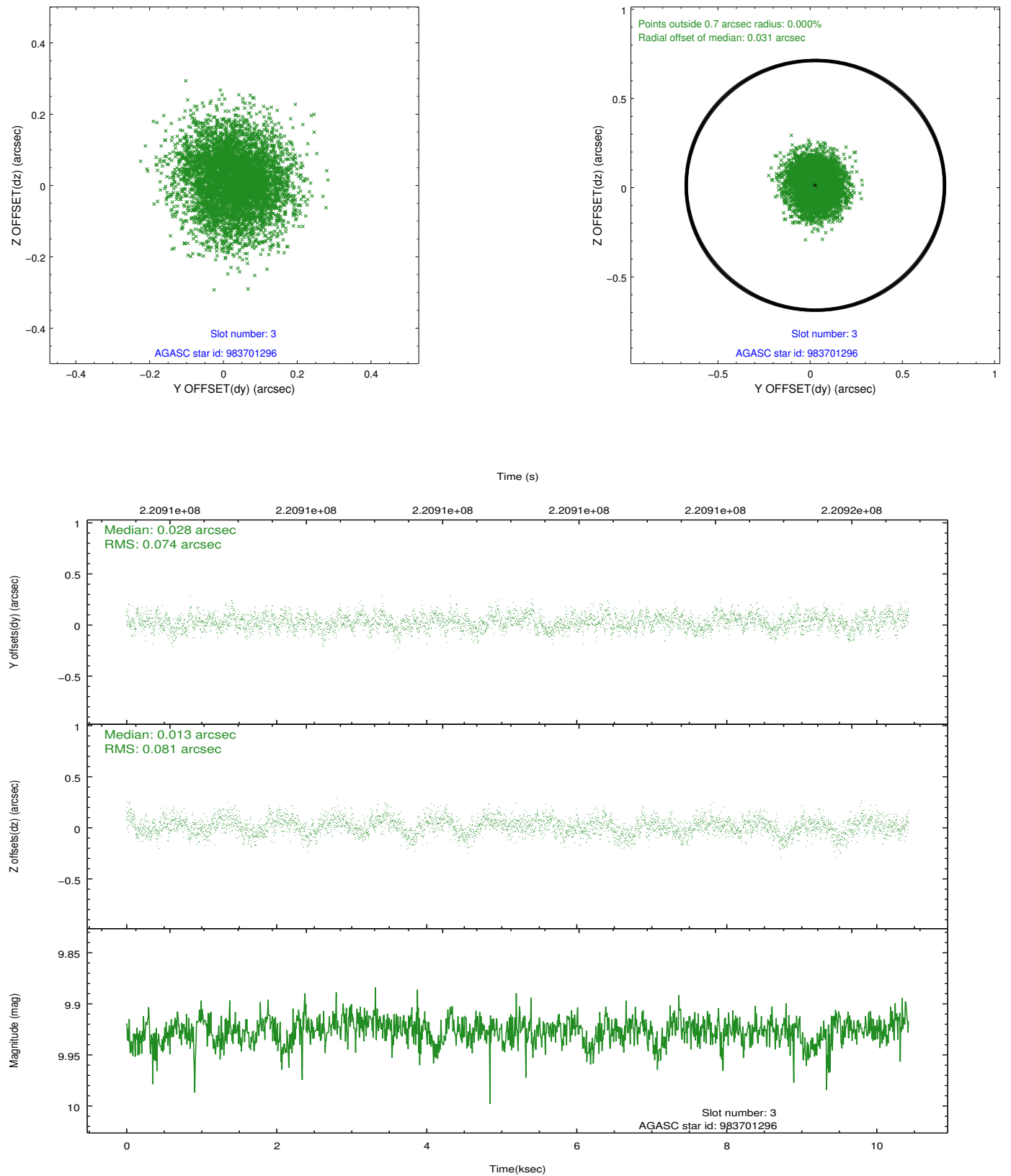


Slot Statistics

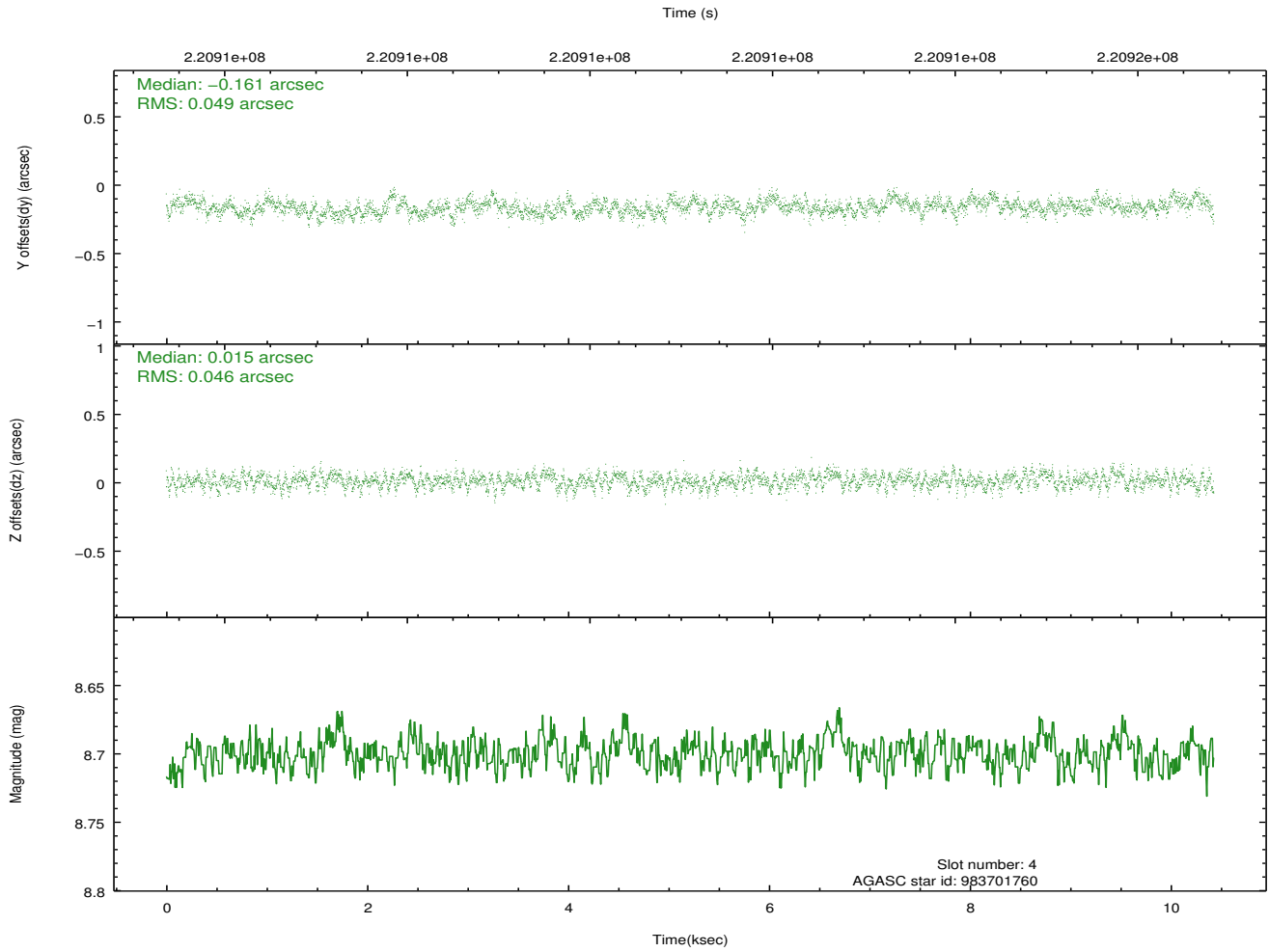
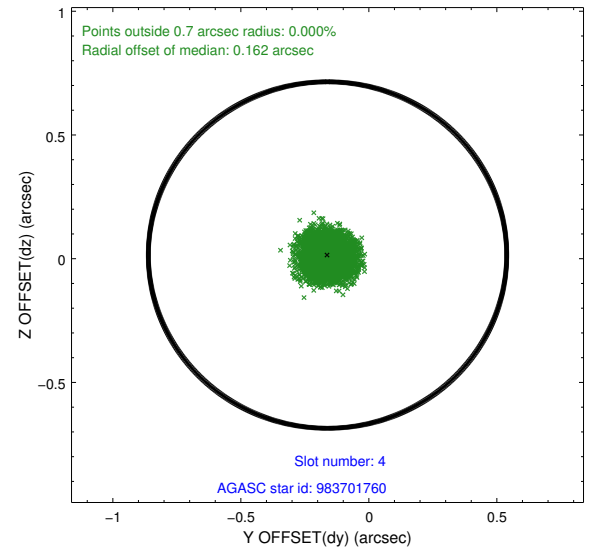
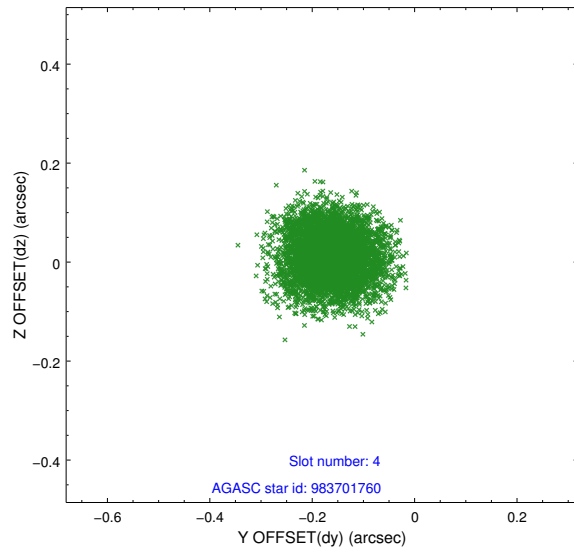
slot	status	id	mag	n_pts	med_dy	med_dz	dr1	dr2	ra	dec	mean_y	mean_z
0	FID	ACIS-S-1	7.19	2544	0.028	-0.081	0.011	0.016	0.000000	0.000000	936.53	-1729.26
1	FID	ACIS-S-4	7.20	2544	0.037	0.047	0.014	0.021	0.000000	0.000000	2154.27	174.48
2	FID	ACIS-S-5	7.23	2544	-0.092	0.047	0.015	0.023	0.000000	0.000000	-1811.77	168.73
3	GUIDE	983701296	9.93	5081	0.028	0.013	0.117	0.188	343.446048	-32.388884	1218.19	1432.35
4	GUIDE	983701760	8.70	5088	-0.161	0.015	0.072	0.116	342.575335	-31.830317	-1102.81	-955.16
5	GUIDE	983703872	8.76	5086	-0.005	0.056	0.090	0.134	342.723807	-32.488548	1303.27	-789.67
6	GUIDE	983704680	9.35	5080	-0.009	0.033	0.086	0.140	343.270612	-32.443271	1345.50	878.64
7	GUIDE	984089048	9.03	5084	0.147	-0.113	0.088	0.144	342.300577	-32.750637	2089.11	-2175.06

2.4 Star Slots

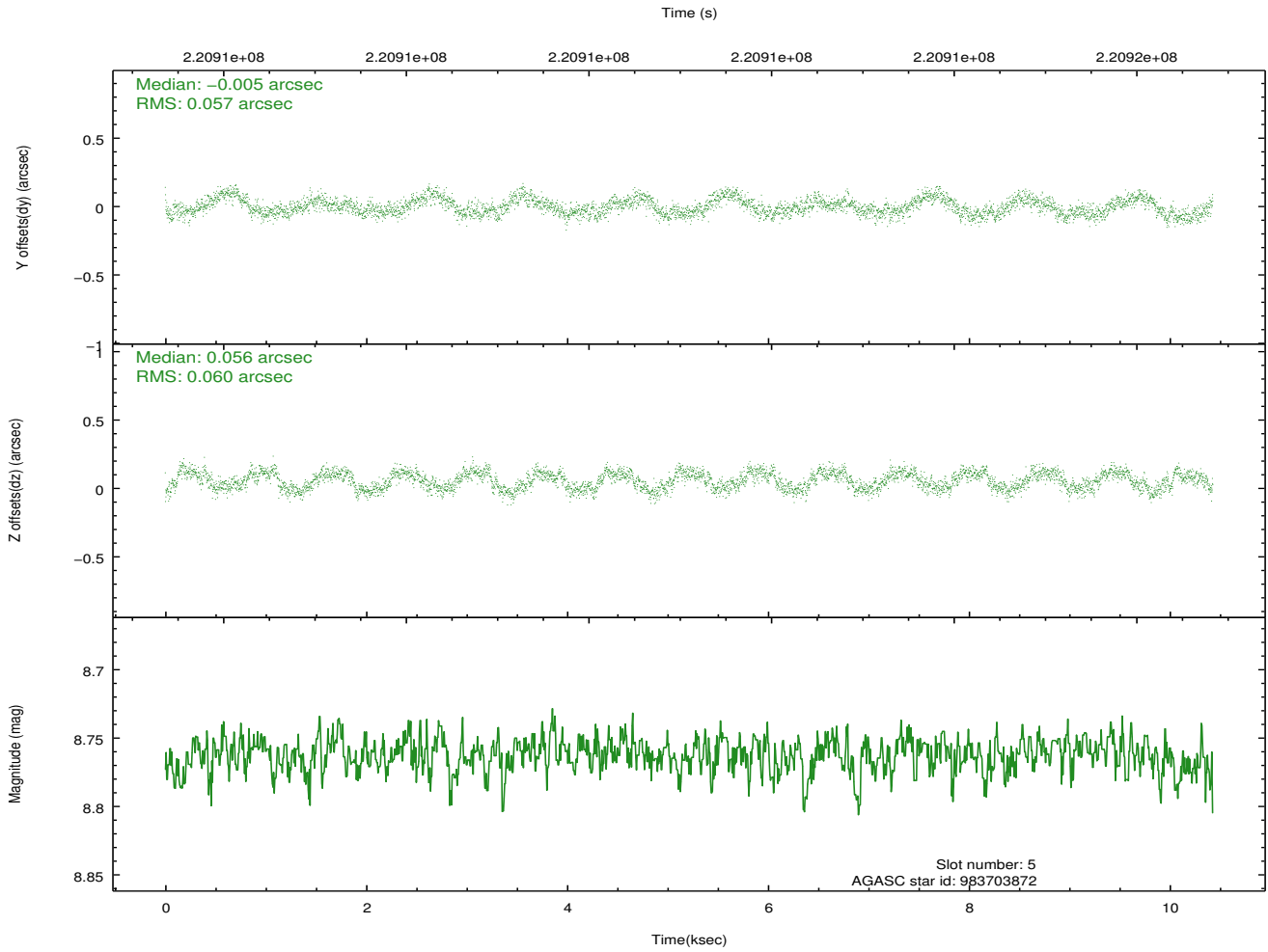
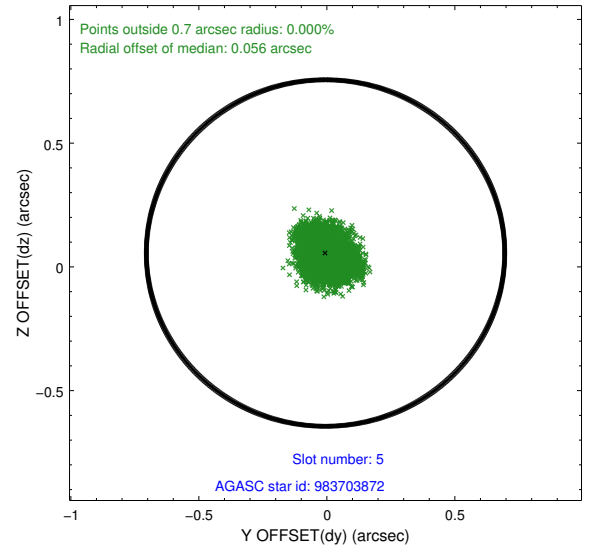
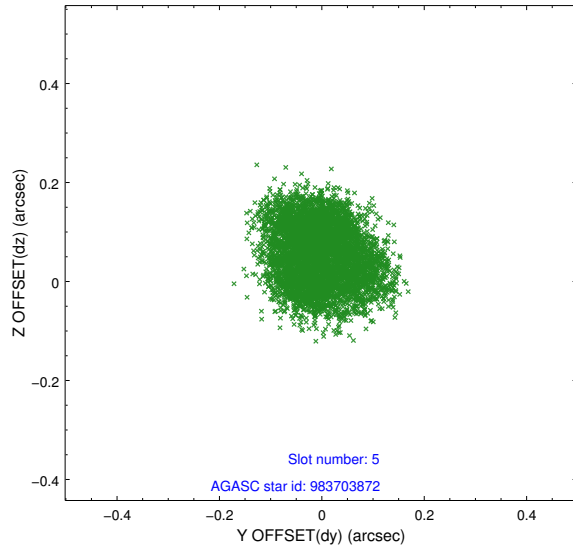
2.4.1 Slot 3



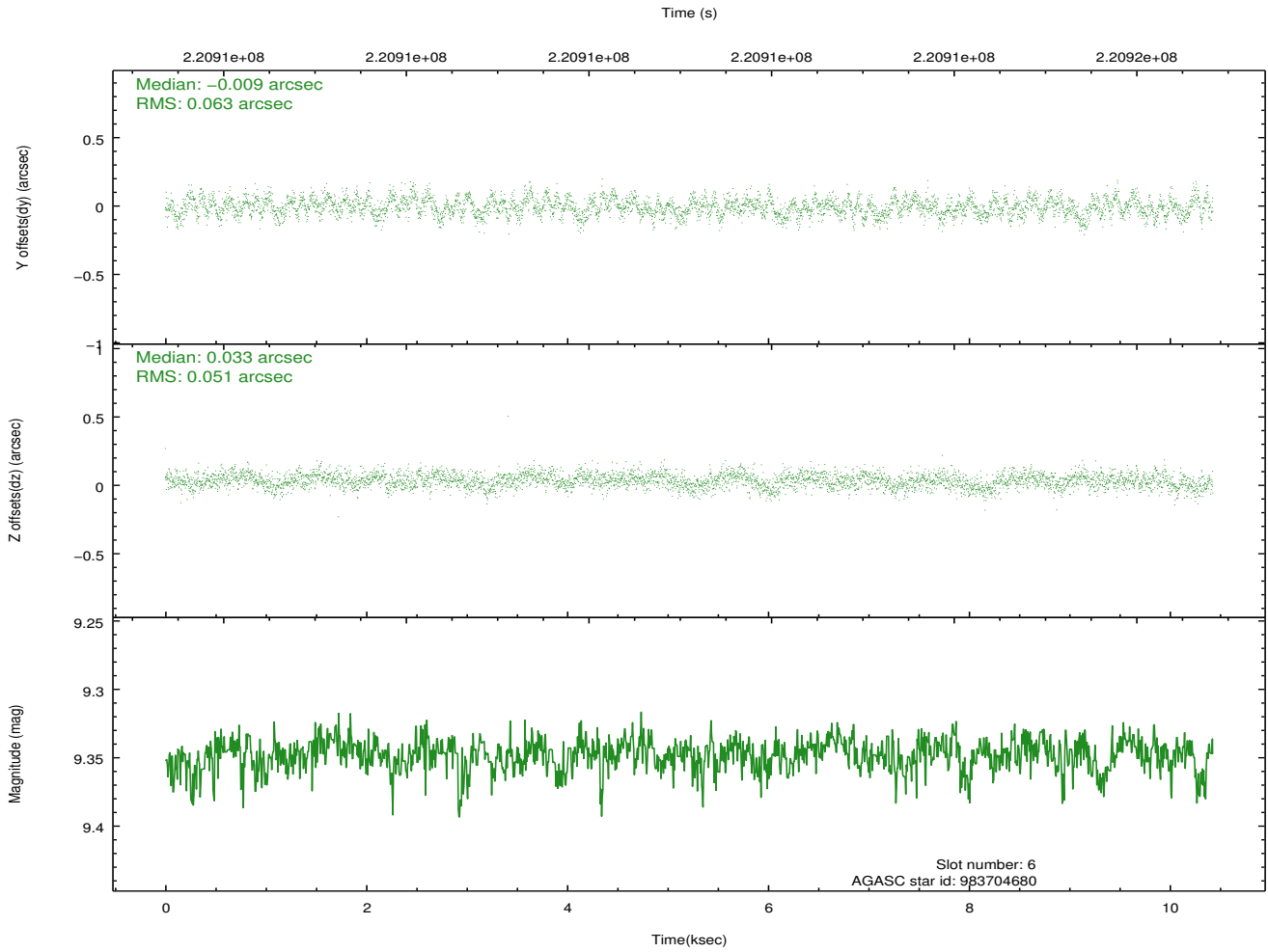
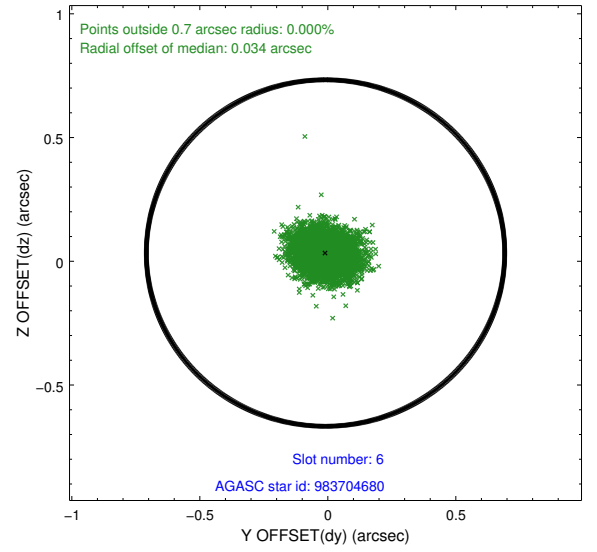
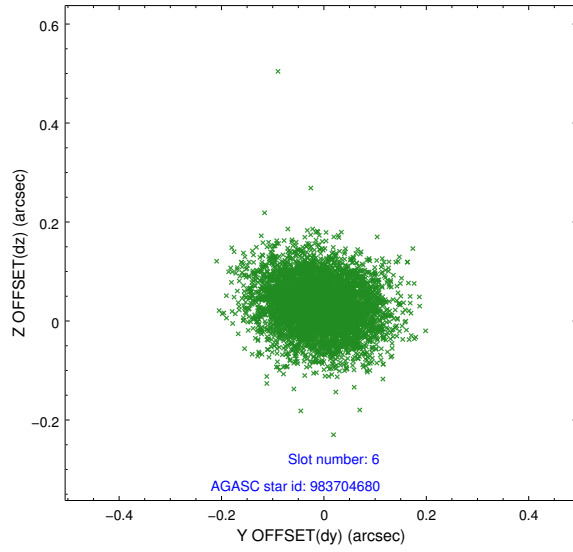
2.4.2 Slot 4



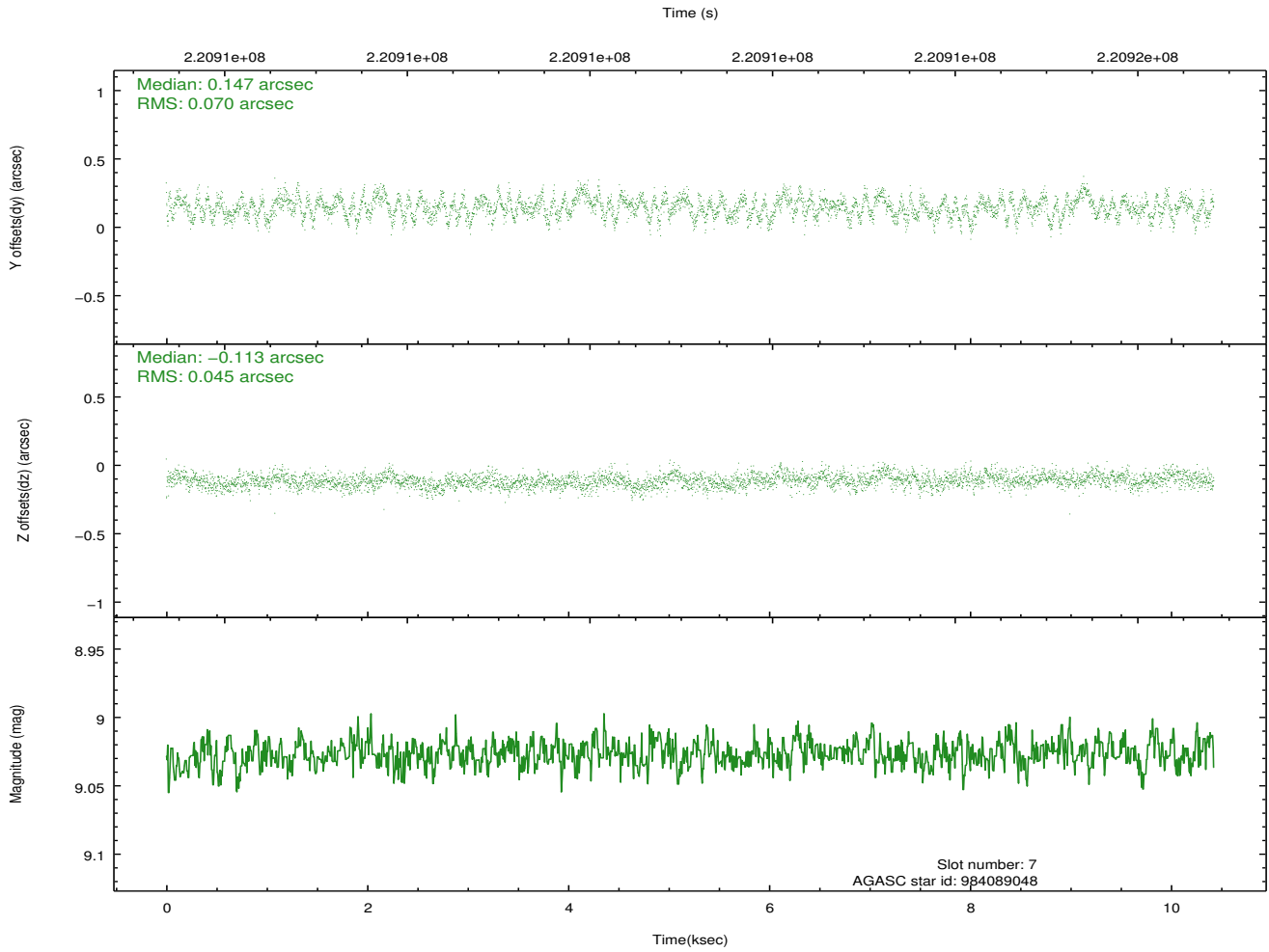
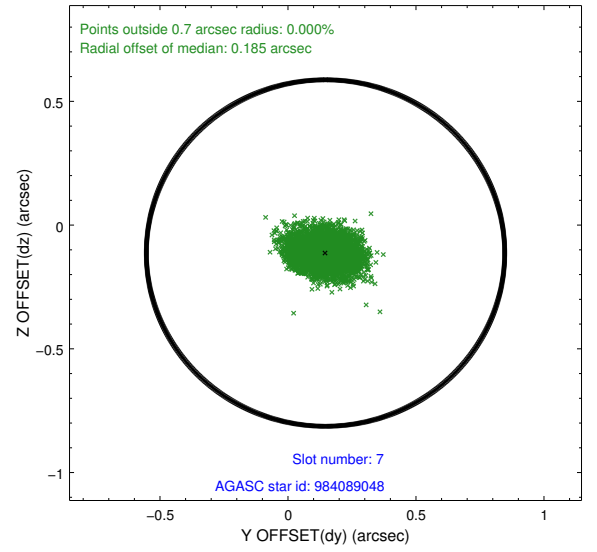
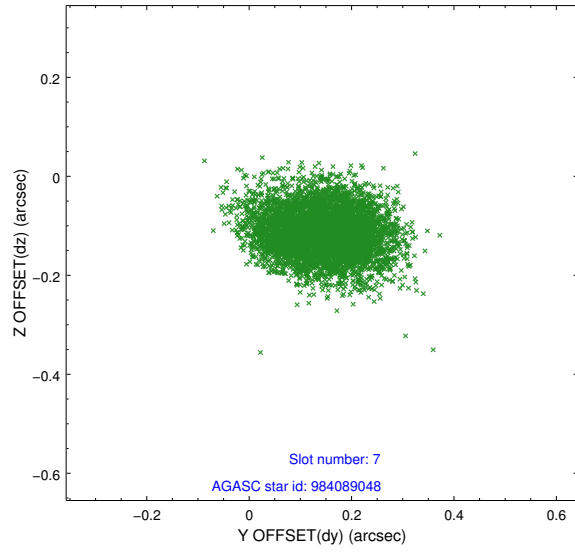
2.4.3 Slot 5



2.4.4 Slot 6

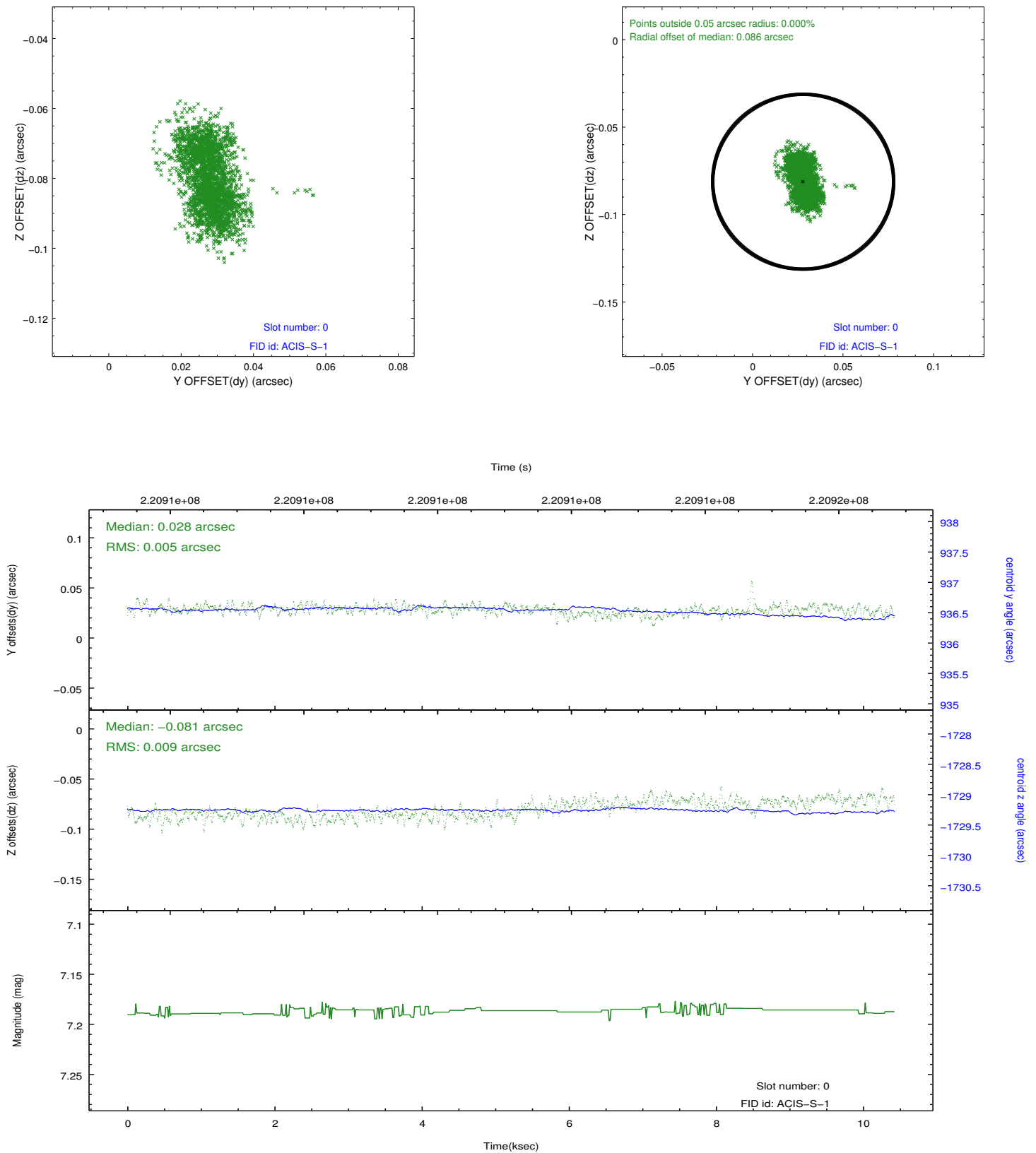


2.4.5 Slot 7

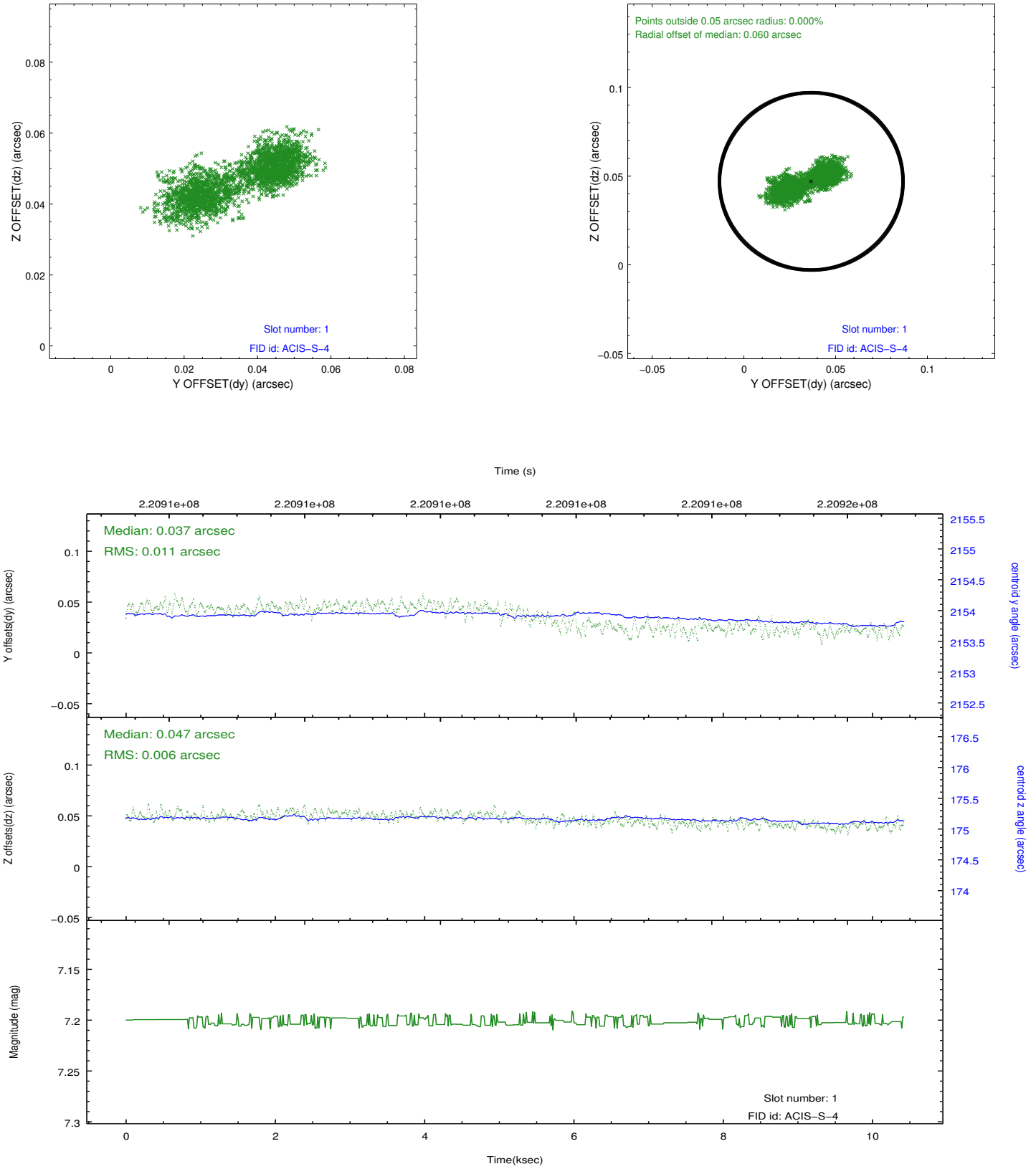


2.5 FID Slots

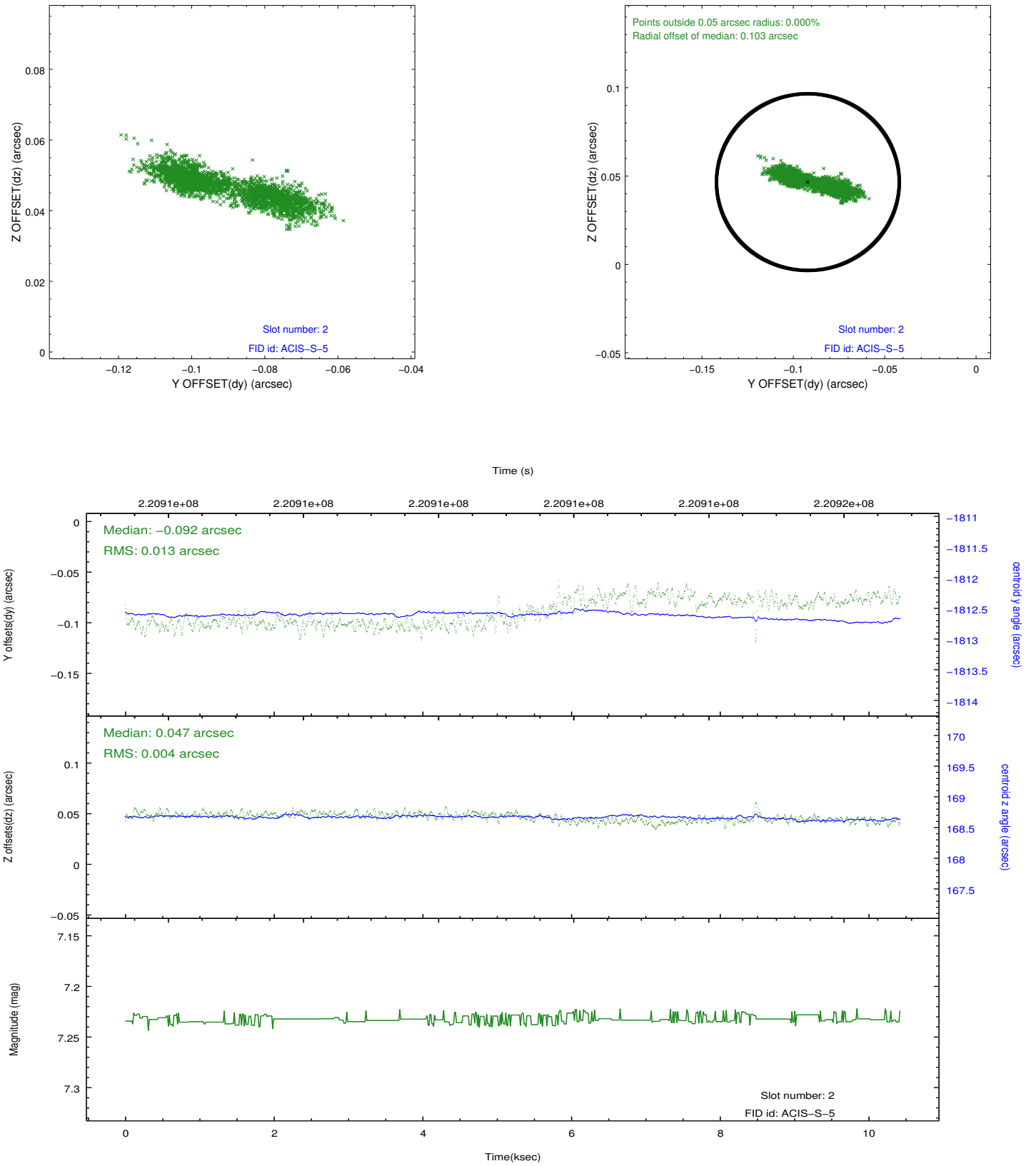
2.5.1 Slot 0



2.5.2 Slot 1



2.5.3 Slot 2



A Summary

A.1 Status

V&V Scientist	Jen Lauer
V&V Date (YYYY-MM-DD)	2013.01.08
V&V Edition	1
V&V Disposition and Status	OK
V&V Charge Time	10.42219

A.2 Comments