

V&V Reference Report

L2 ASCDS Version : 8.5

Observation 5768 - L2 Version 3
Chandra X-Ray Center

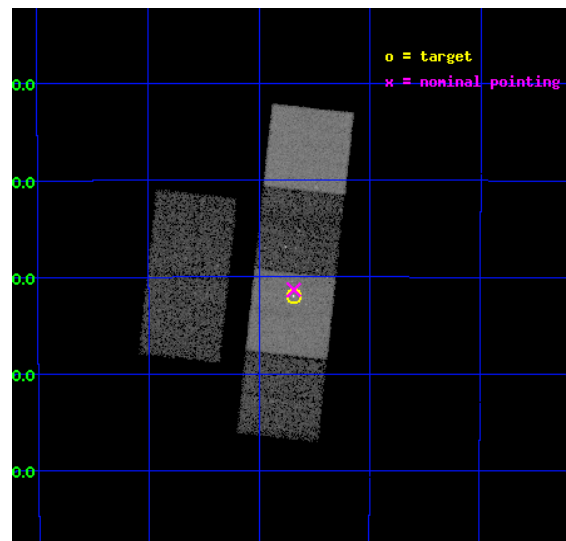
L2 Processing Date : Dec 12 2012

Contents

1	Front	2
2	OBI	3
2.1	OBI	3
2.1.1	Images	3
2.1.2	Bias	3
2.1.3	Parameters	4
2.1.4	Events	4
2.2	Compared Parameters	5
2.3	Aspect	6
2.4	Star Slots	9
2.4.1	Slot 3	9
2.4.2	Slot 4	10
2.4.3	Slot 5	11
2.4.4	Slot 6	12
2.4.5	Slot 7	13
2.5	FID Slots	14
2.5.1	Slot 0	14
2.5.2	Slot 1	15
2.5.3	Slot 2	16
A	Summary	17
A.1	Status	17
A.2	Comments	17

1 Front

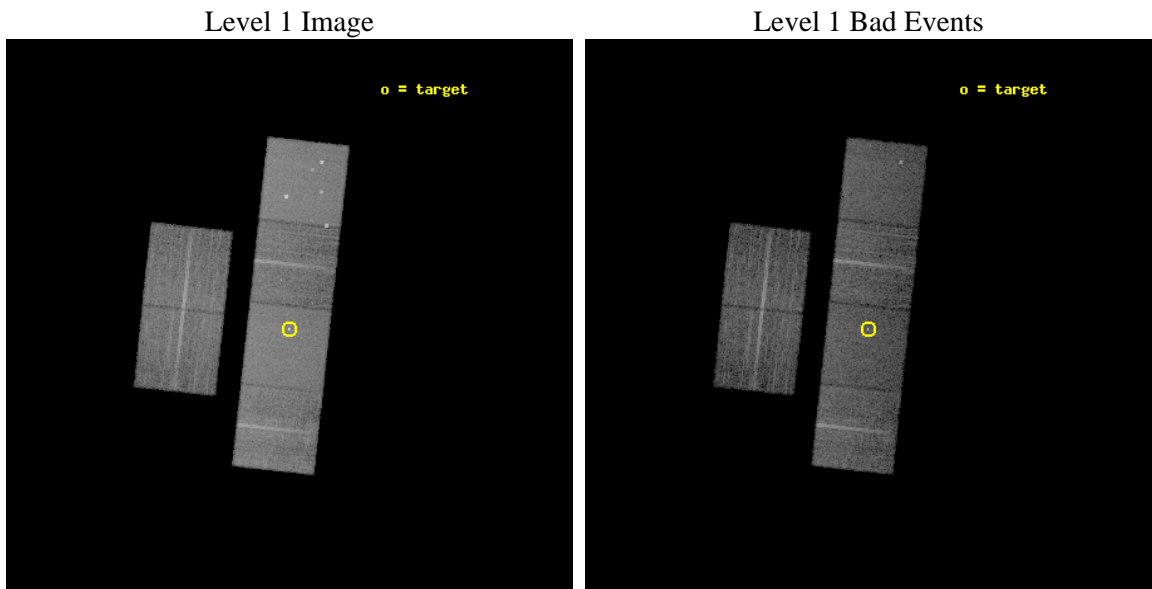
seq_num	800481	Sequence number
obs_id	5768	Observation id
title	X-ray emission from clusters of galaxies from the REFLEX sample.	P
observer	Dr. Peter Predehl	Principal investigator
object	RXCJ1253.6-3931	Source name
dtcycle	0	
cycle	P	events from which exps? Prim/Second/Both
ra_targ	193.420417	Observer's specified target RA [deg]
dec_targ	-39.532	Observer's specified target Dec [deg]
ra_nom	193.42124934478	Nominal RA [deg]
dec_nom	-39.522308617053	Nominal Dec [deg]
roll_nom	96.212323634235	Nominal Roll [deg]
revision	3	Processing version of data
ontime	9955.199962914	Sum of GTIs [s]
livetime	9829.1412266818	Livetime [s]
ontime2	9955.199962914	Sum of GTIs [s]
ontime3	9955.199962914	Sum of GTIs [s]
ontime5	9955.199962914	Sum of GTIs [s]
ontime6	9955.199962914	Sum of GTIs [s]
ontime7	9955.199962914	Sum of GTIs [s]
ontime8	9955.199962914	Sum of GTIs [s]
l2events	127457	Number of level 2 events



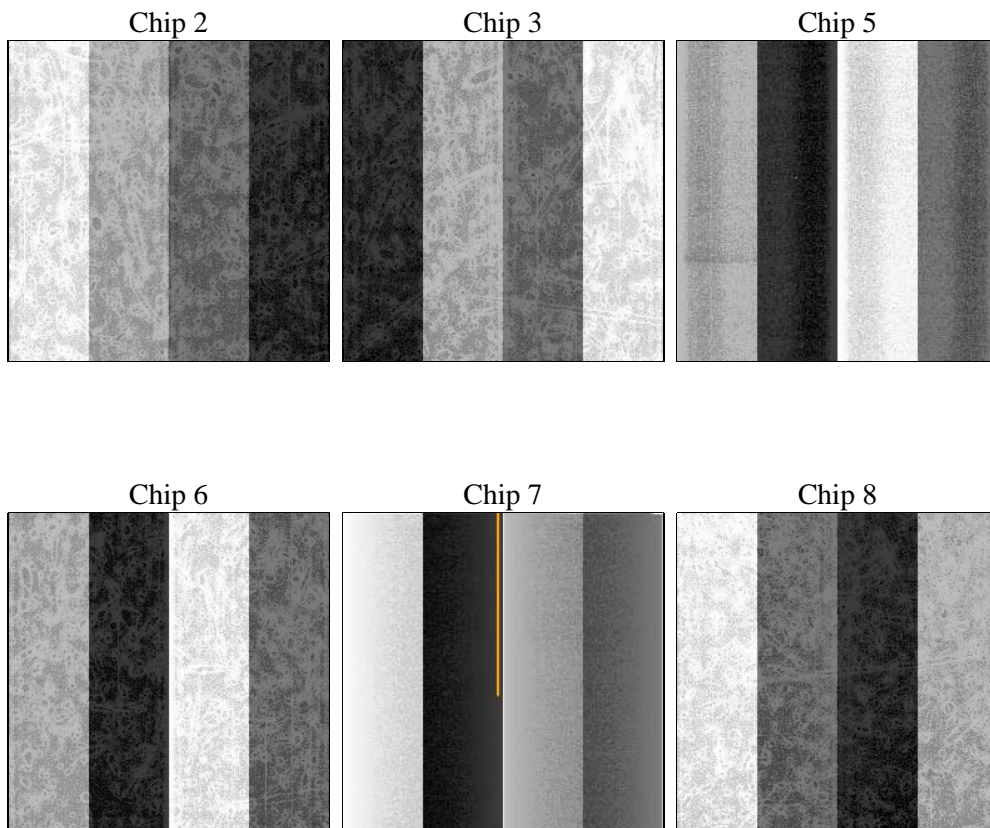
2 OBI

2.1 OBI

2.1.1 Images



2.1.2 Bias



2.1.3 Parameters

obi_num	0	Obi number	sched_exp_time	10000.000000	[s] Scheduled observation exposure time
ascdsver	8.5	Processing system revision	ontime	9955.199962914	Sum of GTIs [s]
caldsver	4.5.4	 	ontime2	9955.199962914	Sum of GTIs [s]
date	2012-12-12T02:53:25	Date and time of file creation	ontime3	9955.199962914	Sum of GTIs [s]
revision	3	Processing version of data	ontime5	9955.199962914	Sum of GTIs [s]
			ontime6	9955.199962914	Sum of GTIs [s]
			ontime7	9955.199962914	Sum of GTIs [s]
			ontime8	9955.199962914	Sum of GTIs [s]
			l1events	558639	Number of level 1 events

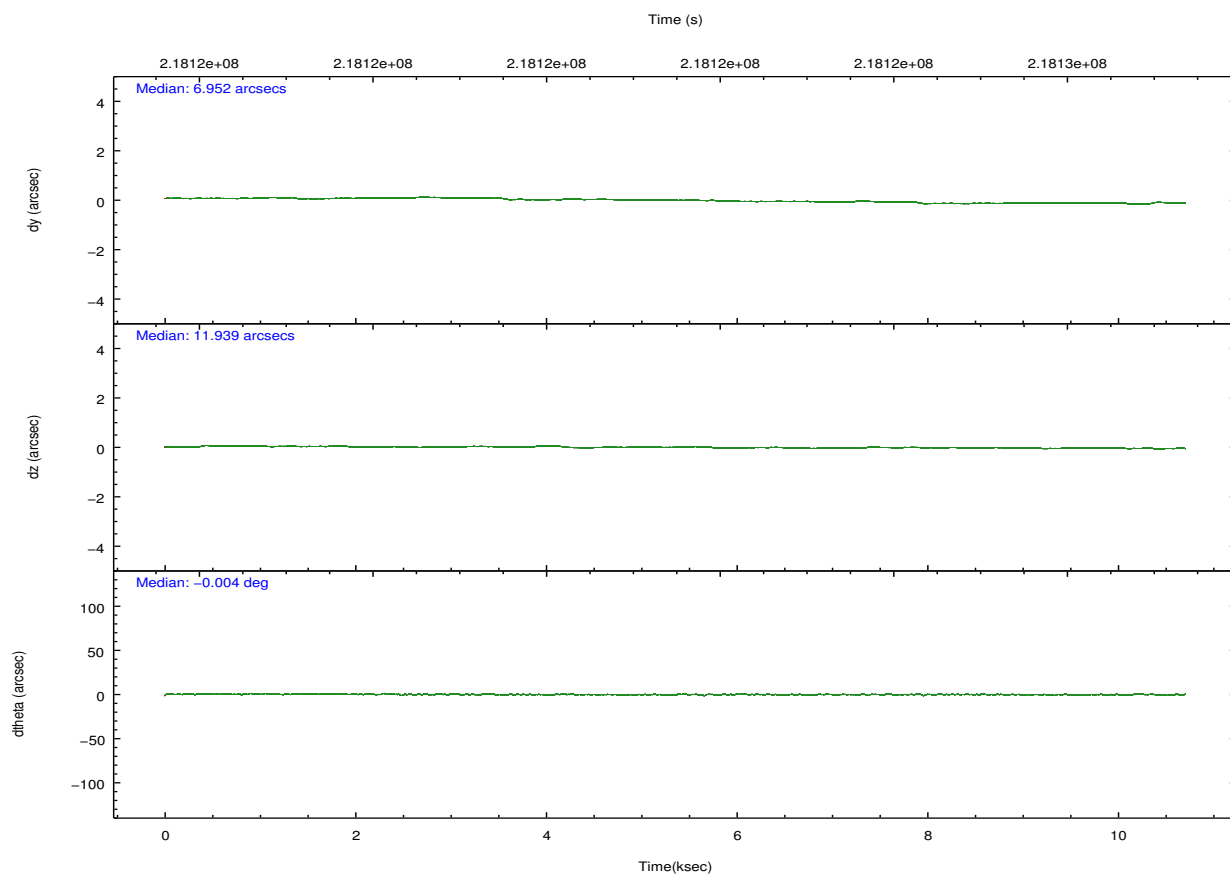
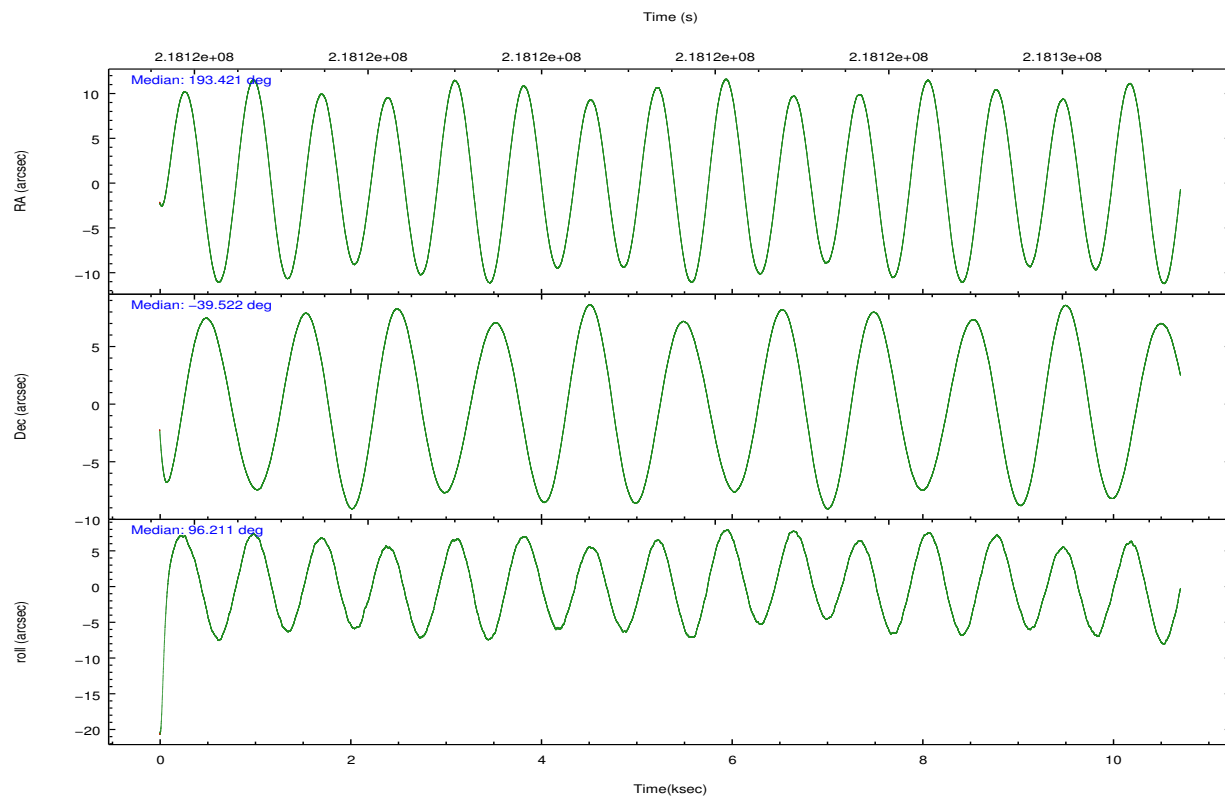
2.1.4 Events

	ccd 2	ccd 3	ccd 5	ccd 6	ccd 7	ccd 8		ccd 2	ccd 3	ccd 5	ccd 6	ccd 7	ccd 8
level 1 events	77671	73476	120531	79184	108627	99150	grade 0 events	4119	3891	9477	3938	4405	6756
rejected events	68394	64541	62979	69589	62743	77894		5%	5%	7%	4%	4%	6%
rejected %	88%	87%	52%	87%	57%	78%	grade 1 events	47	44	553	36	176	67
								0%	0%	0%	0%	0%	0%
							grade 2 events	1935	1731	16073	1945	9079	4658
								2%	2%	13%	2%	8%	4%
							grade 3 events	843	851	2127	996	4193	2277
								1%	1%	1%	1%	3%	2%
							grade 4 events	866	871	2024	905	4036	2201
								1%	1%	1%	1%	3%	2%
							grade 5 events	2832	3347	8482	3565	10440	4724
								3%	4%	7%	4%	9%	4%
							grade 6 events	1523	1596	27893	1823	24207	5371
								1%	2%	23%	2%	22%	5%
							grade 7 events	65506	61145	53902	65976	52091	73096
								84%	83%	44%	83%	47%	73%

2.2 Compared Parameters

Parameter	Planned	Actual	Parameter	Planned	Actual
Instrument	ACIS	ACIS	Obspar format version number	7	7
Detector	ACIS-235678	ACIS-235678	Obspar file type	PREDICTED	ACTUAL
Grating	NONE	NONE	Obspar update status	NONE	UPDATED
Data mode	FAINT	FAINT	Number of optional ACIS chips dropped	0	0
Observation mode	POINTING	POINTING	On-chip summing requested	N	N
[deg] Pointing RA	193.442508	193.4212493447796	Subarray requested	NONE	NONE
[deg] Pointing Dec	-39.544104	-39.52230861705269	Alternating exposures requested	N	N
[deg] Pointing Roll	96.069263	96.2123236342353	[s] Primary exposure time	0.000000	3.2
[mm] SIM focus pos	-0.684267	-0.6828225247311905			
[mm] SIM defocus	0	0.001444936568705701			
[mm] SIM translation stage pos	-190.132523	-190.1400660498719			
[mm] SIM translation stage offset	0	0.00754346686406393			
[s] Observation start time (MET)	218116831.184000	218115463.57305			
Observation start date	2004-11-29T11:59:27	2004-11-29T11:37:43			
[s] Observation end time (MET)	218126831.184000	218128061.84861			
Observation end date	2004-11-29T14:46:07	2004-11-29T15:07:41			
Read mode	TIMED	TIMED			

2.3 Aspect

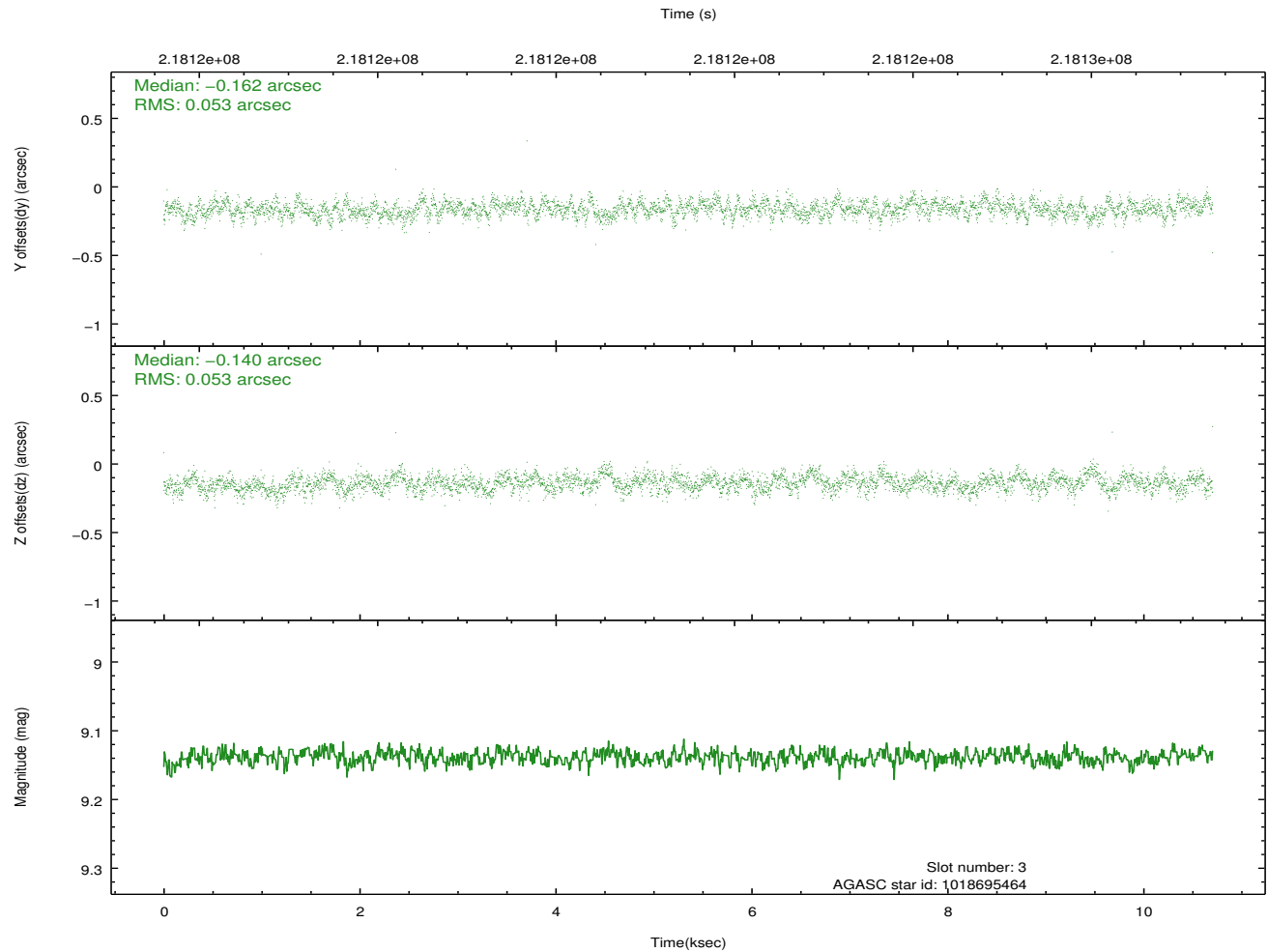
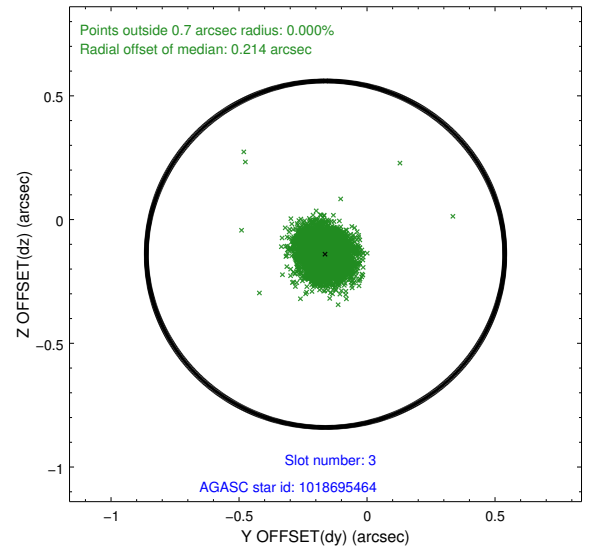
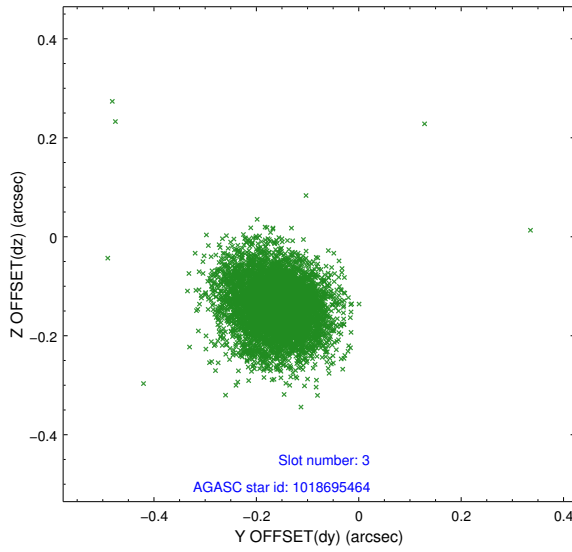


Slot Statistics

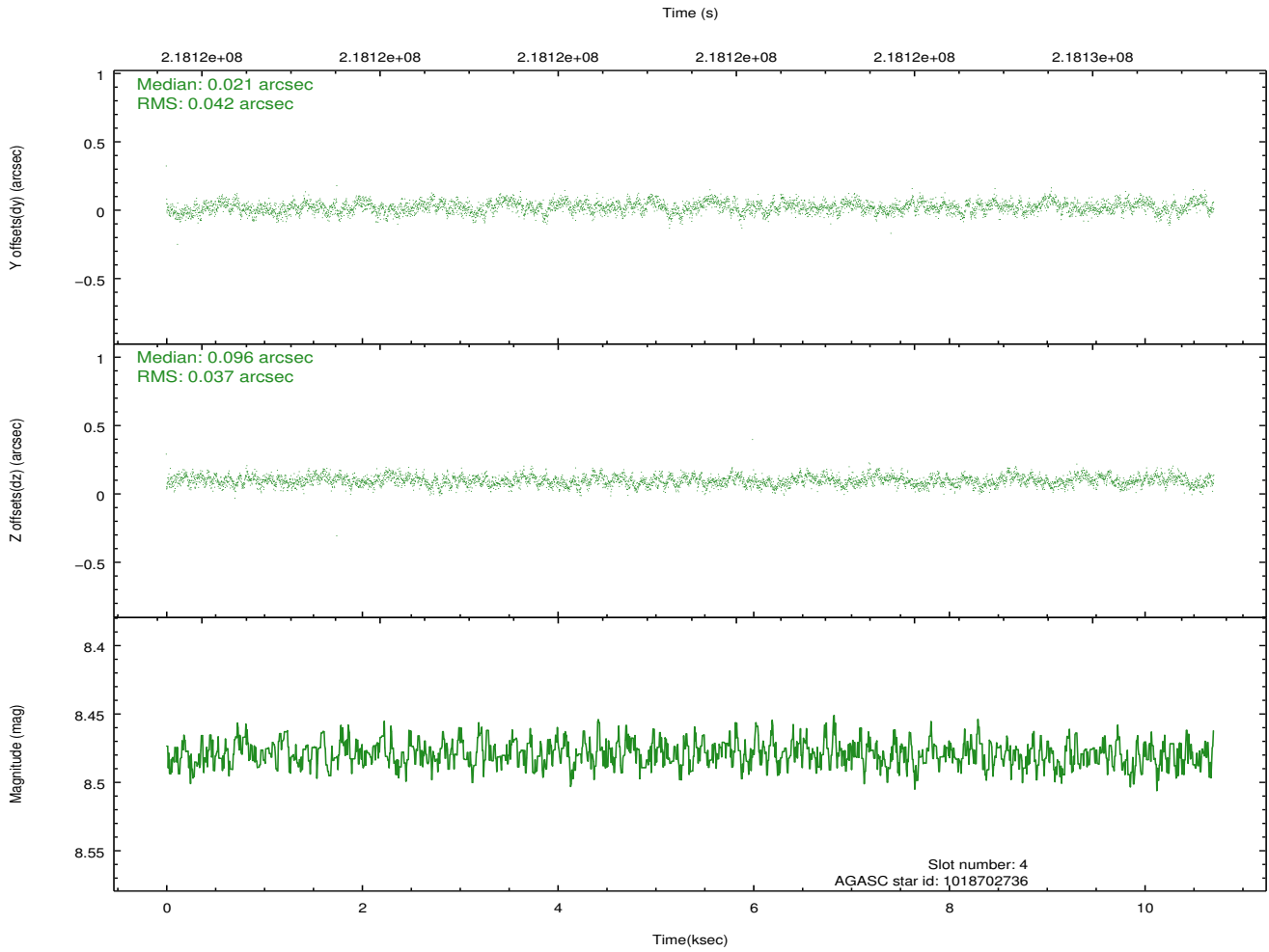
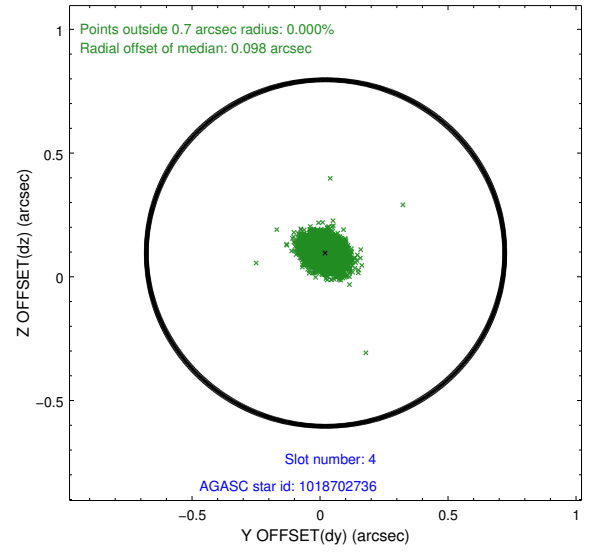
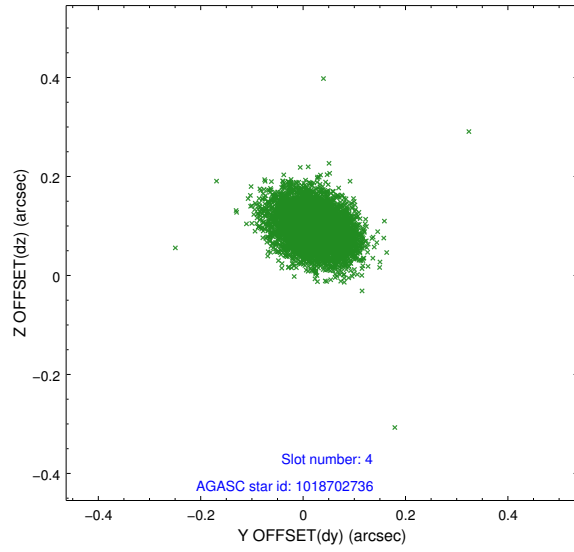
slot	status	id	mag	n_pts	med_dy	med_dz	dr1	dr2	ra	dec	mean_y	mean_z
0	FID	ACIS-S-2	7.10	2612	-0.033	-0.035	0.010	0.023	0.000000	0.000000	-759.72	-1733.27
1	FID	ACIS-S-4	7.20	2612	0.072	0.026	0.010	0.031	0.000000	0.000000	2153.43	174.76
2	FID	ACIS-S-5	7.23	2612	-0.068	0.018	0.008	0.017	0.000000	0.000000	-1811.97	168.99
3	GUIDE	1018695464	9.14	5223	-0.162	-0.140	0.079	0.127	192.636660	-39.119791	1746.78	2077.88
4	GUIDE	1018702736	8.48	5221	0.021	0.096	0.059	0.095	193.592920	-39.094387	1565.51	-588.23
5	GUIDE	1019226168	8.10	5224	0.213	0.308	0.067	0.104	193.643944	-40.169789	-2298.53	-312.43
6	GUIDE	1019227824	8.90	5222	0.202	-0.142	0.071	0.116	193.822930	-39.937402	-1521.42	-894.17
7	GUIDE	1018693888	9.41	5205	-0.275	-0.118	0.110	0.177	193.048104	-38.994800	2080.12	888.59

2.4 Star Slots

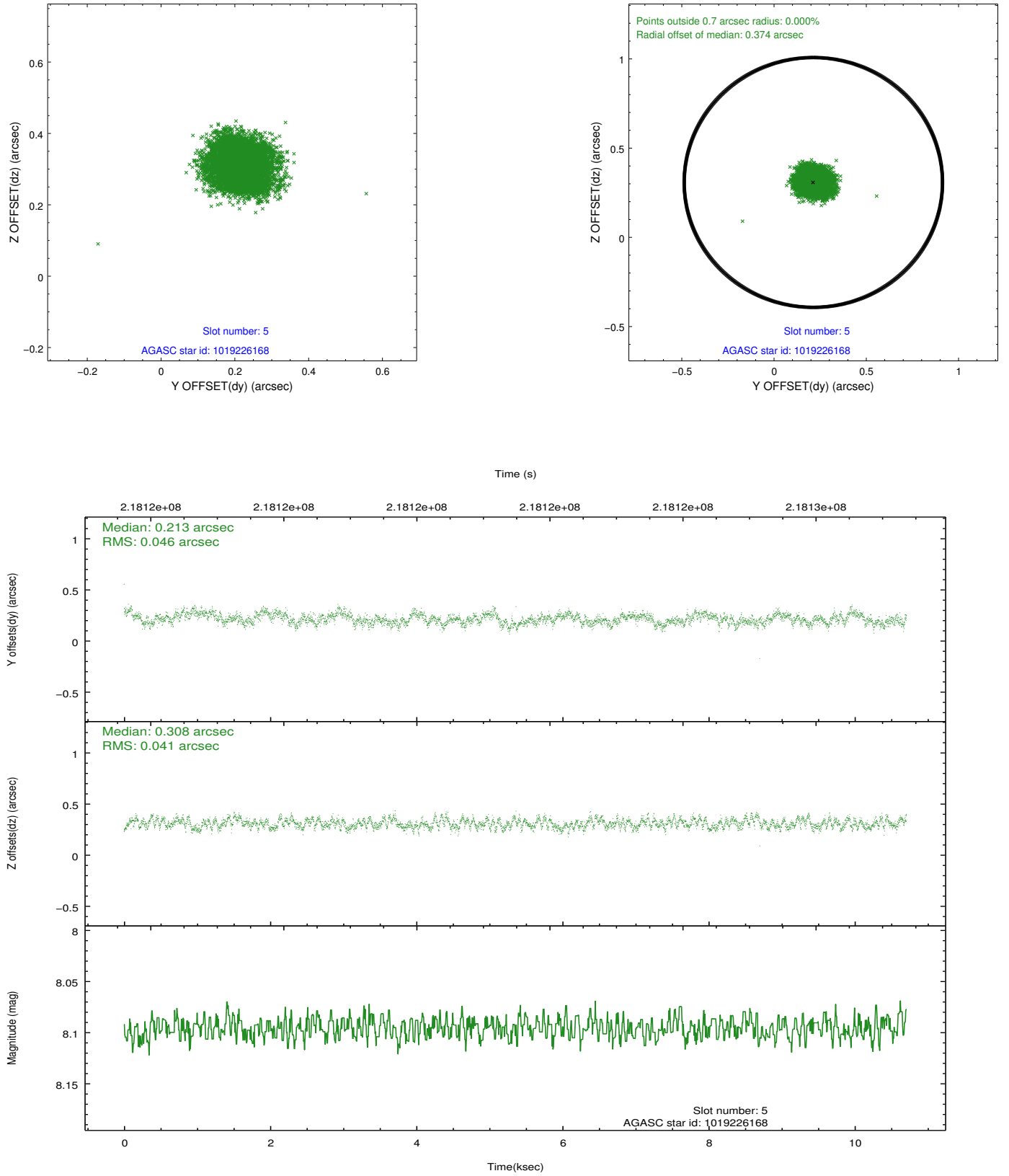
2.4.1 Slot 3



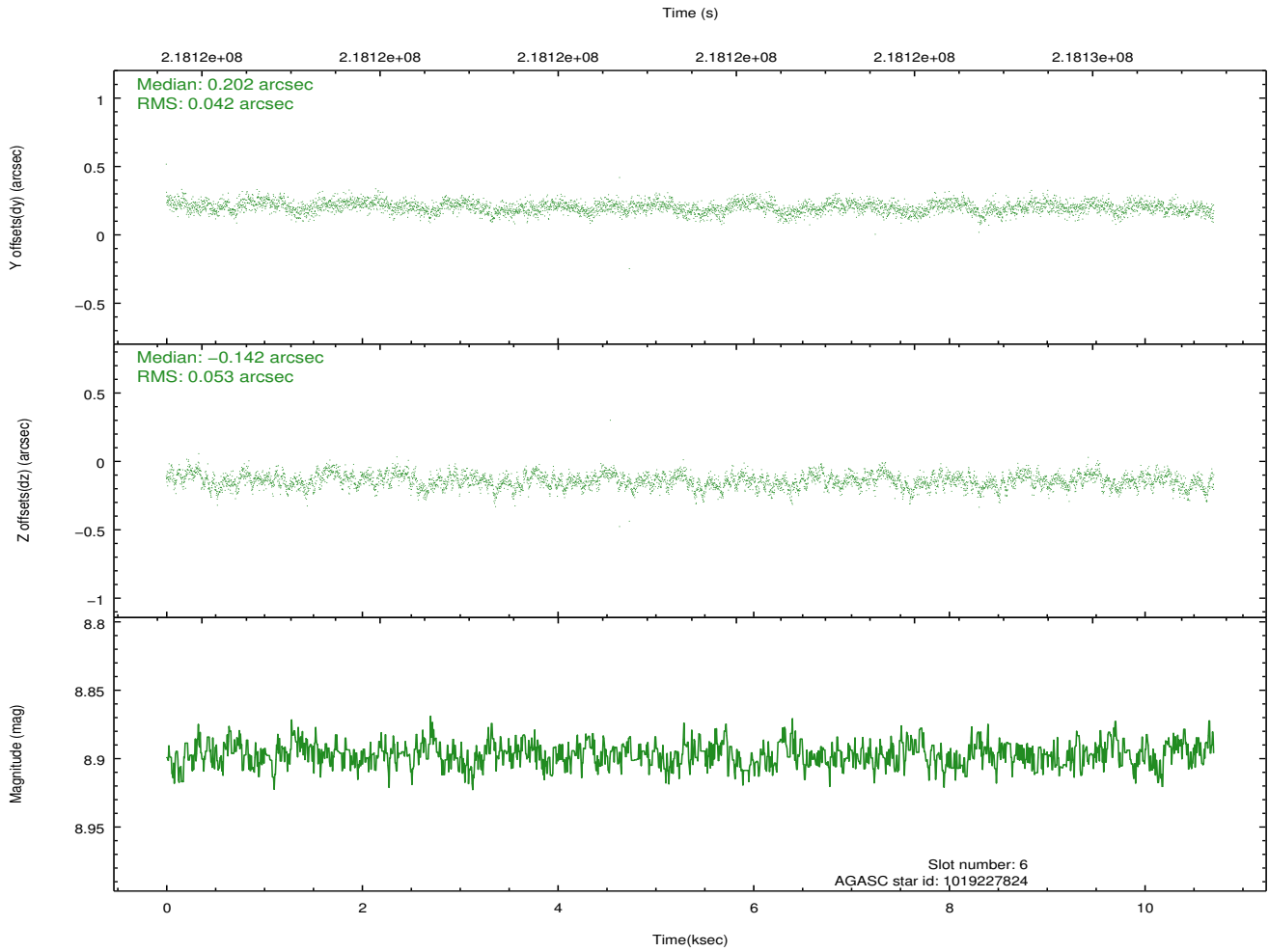
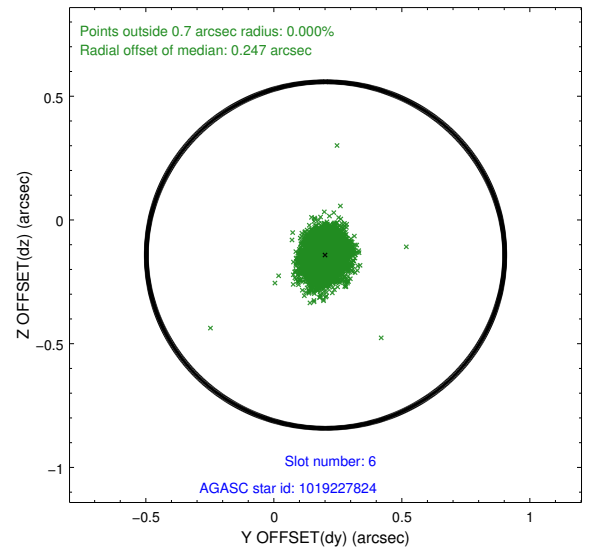
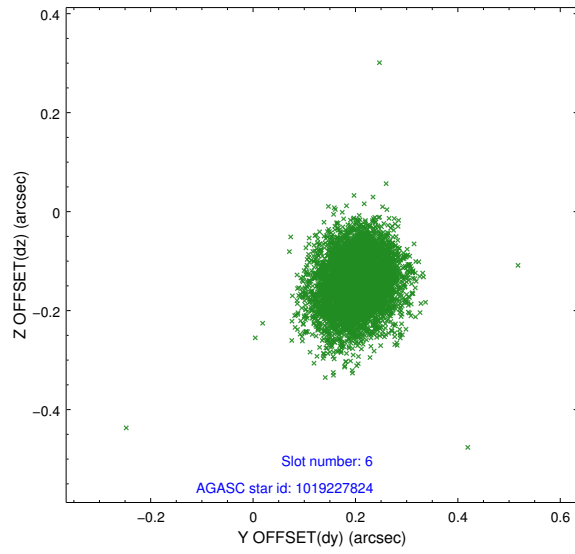
2.4.2 Slot 4



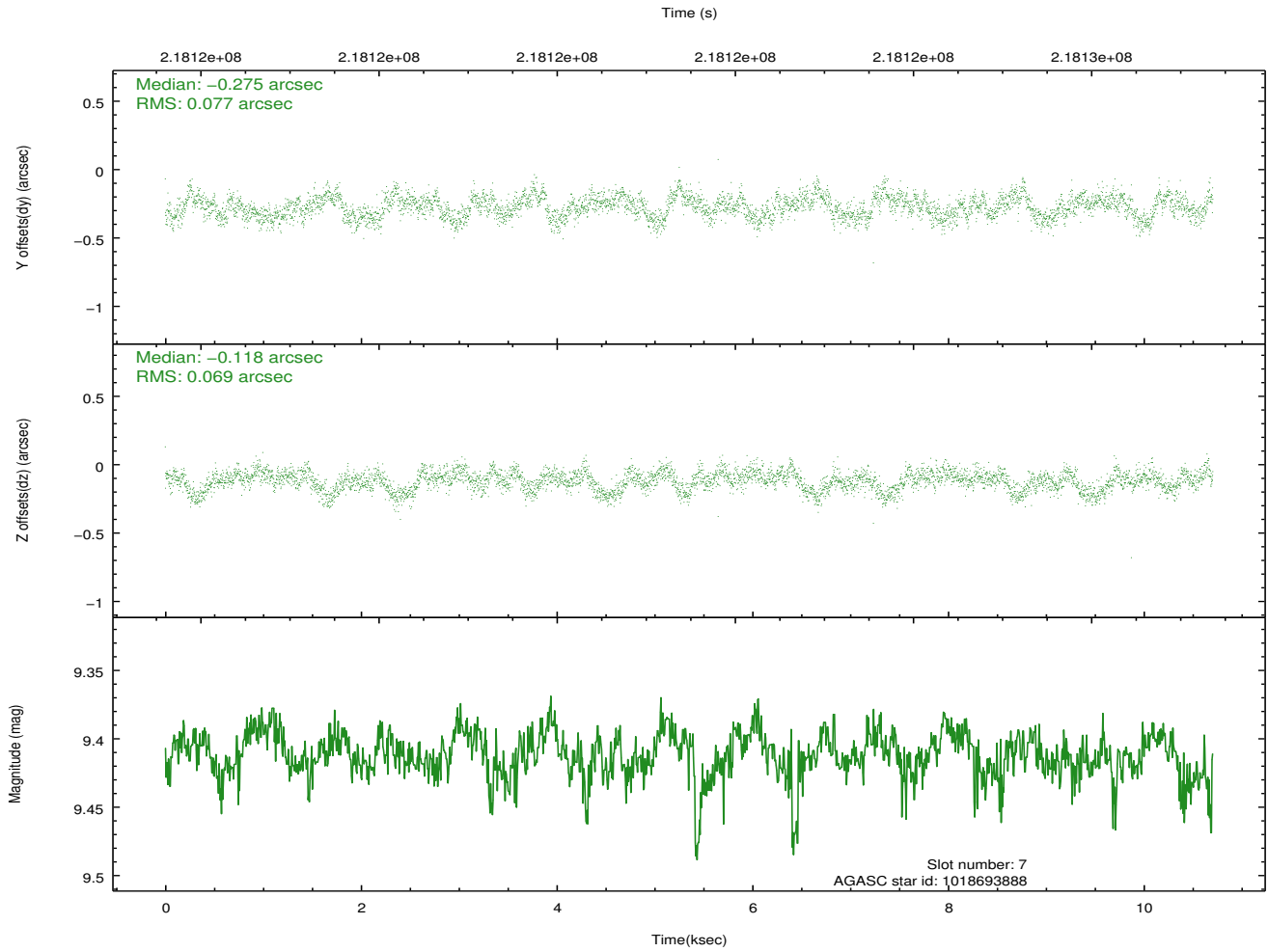
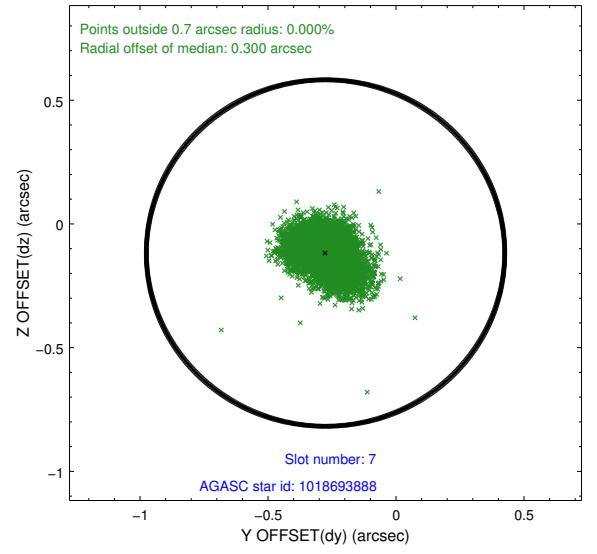
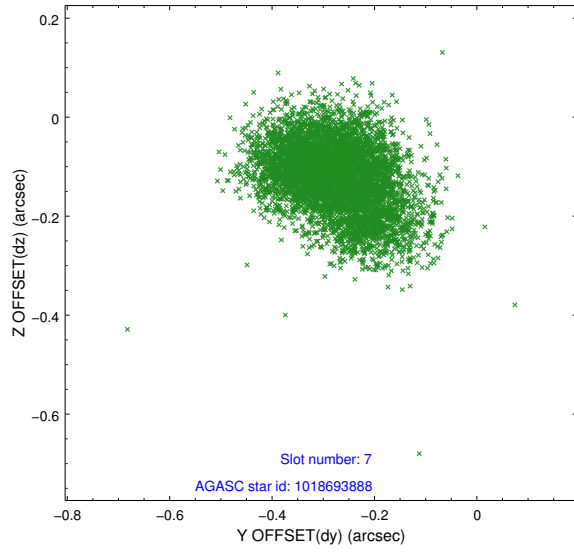
2.4.3 Slot 5



2.4.4 Slot 6

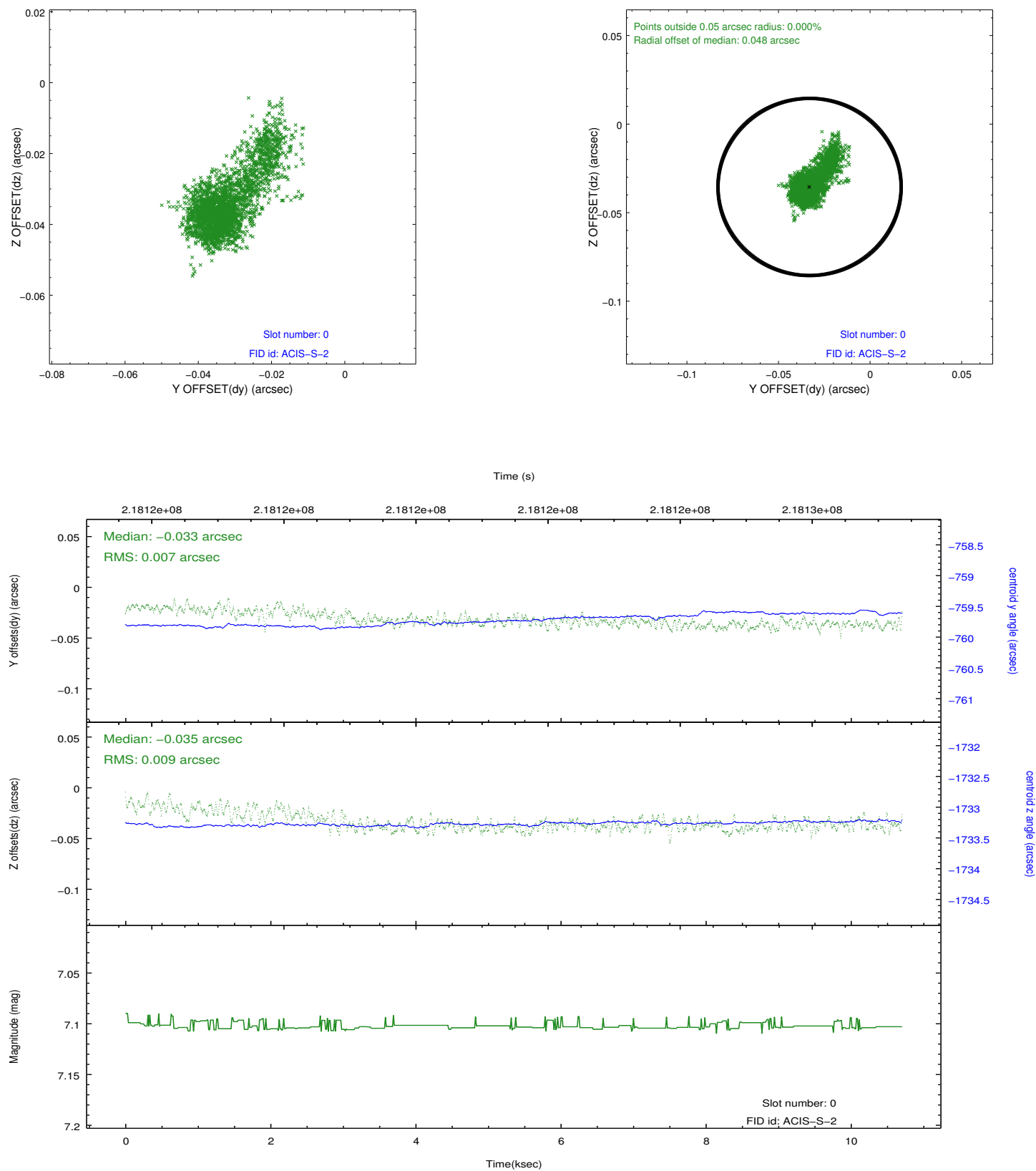


2.4.5 Slot 7

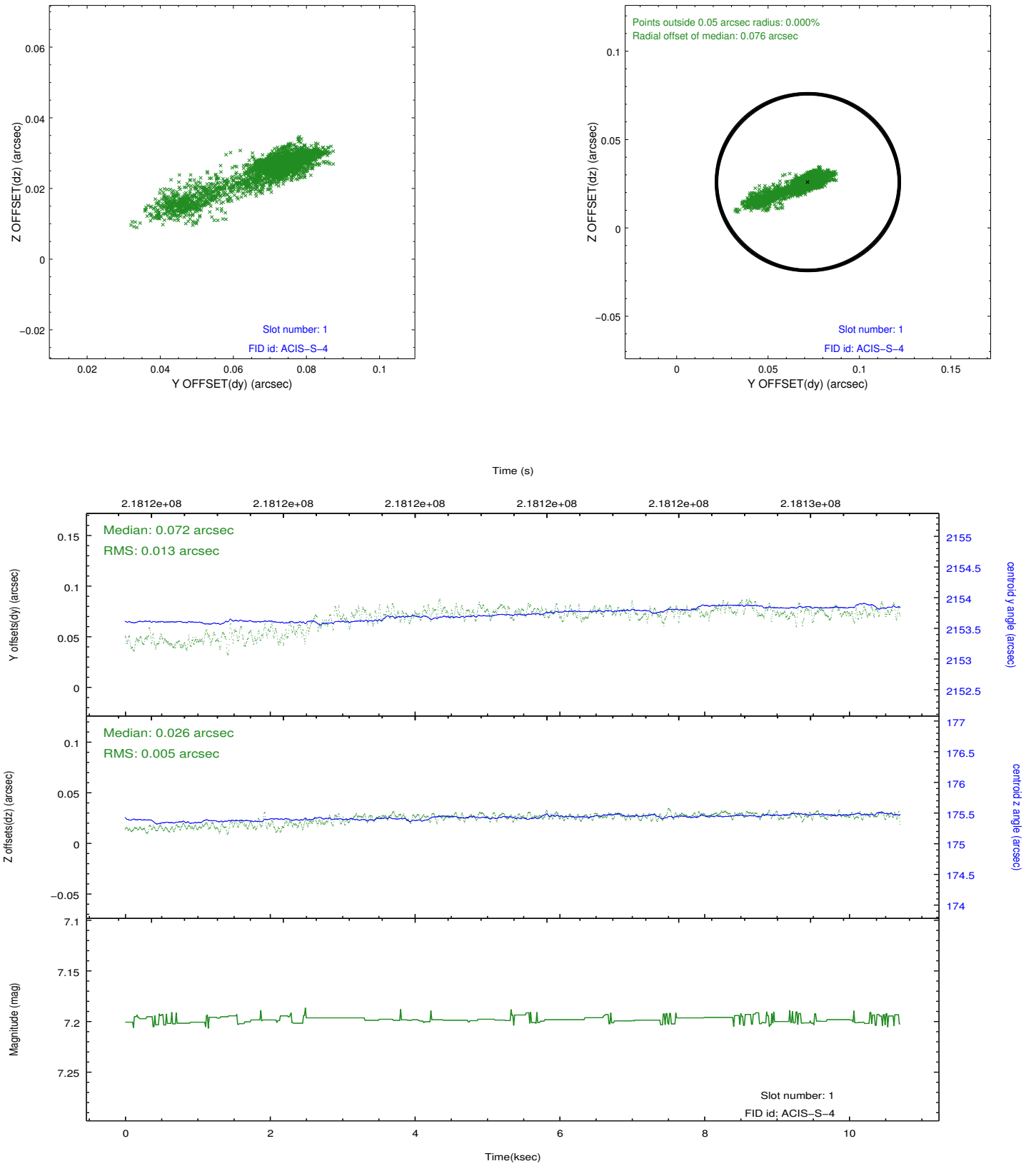


2.5 FID Slots

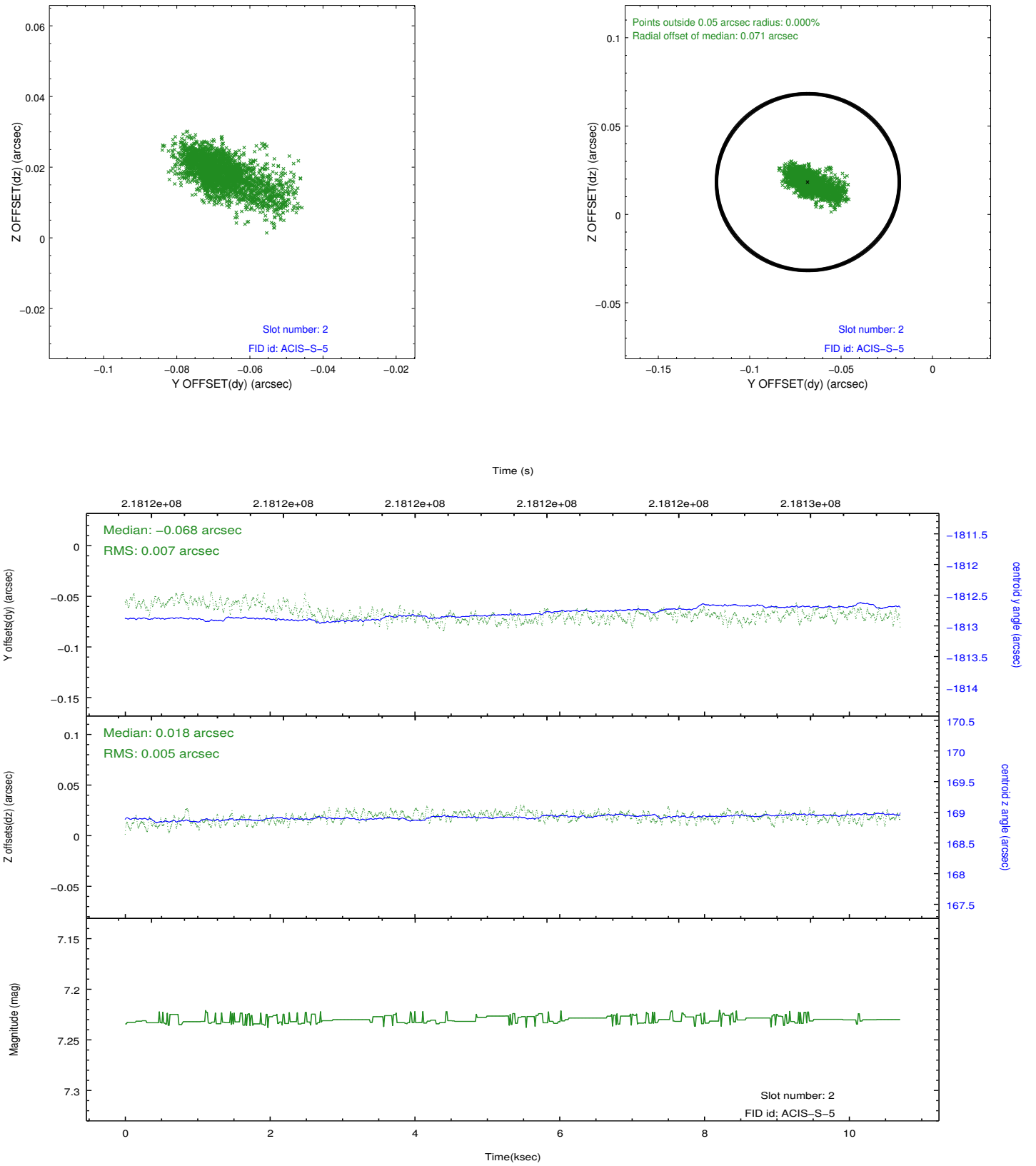
2.5.1 Slot 0



2.5.2 Slot 1



2.5.3 Slot 2



A Summary

A.1 Status

V&V Scientist	Jen Lauer
V&V Date (YYYY-MM-DD)	2013.01.02
V&V Edition	1
V&V Disposition and Status	OK
V&V Charge Time	9.955199

A.2 Comments