

# V&V Reference Report

## L2 ASCDS Version : 7.6.7

Observation 5767 - L2 Version 002  
Chandra X-Ray Center

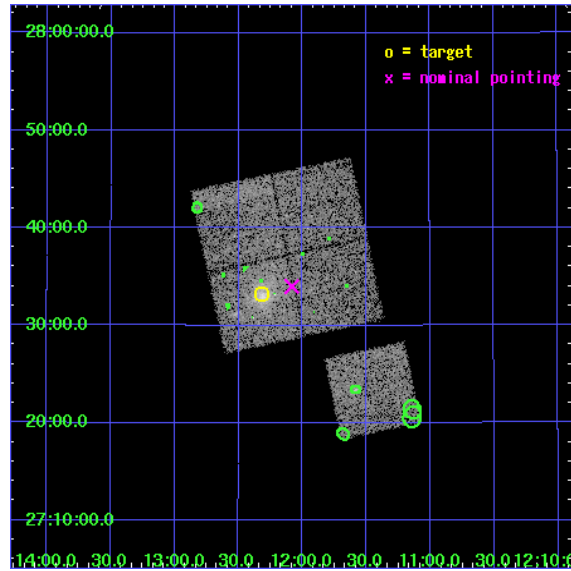
L2 Processing Date: Feb 27 2006

## Contents

<b>1</b>	<b>Front</b>	<b>2</b>
<b>2</b>	<b>OBI</b>	<b>3</b>
2.1	OBI . . . . .	3
2.1.1	Images . . . . .	3
2.1.2	Bias . . . . .	3
2.1.3	Parameters . . . . .	4
2.1.4	Events . . . . .	4
2.2	Compared Parameters . . . . .	5
2.3	Aspect . . . . .	6
2.4	Star Slots . . . . .	9
2.4.1	Slot 3 . . . . .	9
2.4.2	Slot 4 . . . . .	10
2.4.3	Slot 5 . . . . .	11
2.4.4	Slot 6 . . . . .	12
2.4.5	Slot 7 . . . . .	13
2.5	FID Slots . . . . .	14
2.5.1	Slot 0 . . . . .	14
2.5.2	Slot 1 . . . . .	15
2.5.3	Slot 2 . . . . .	16
<b>3</b>	<b>Point Sources</b>	<b>17</b>
<b>A</b>	<b>Summary</b>	<b>18</b>
A.1	Status . . . . .	18
A.2	Comments . . . . .	18

# 1 Front

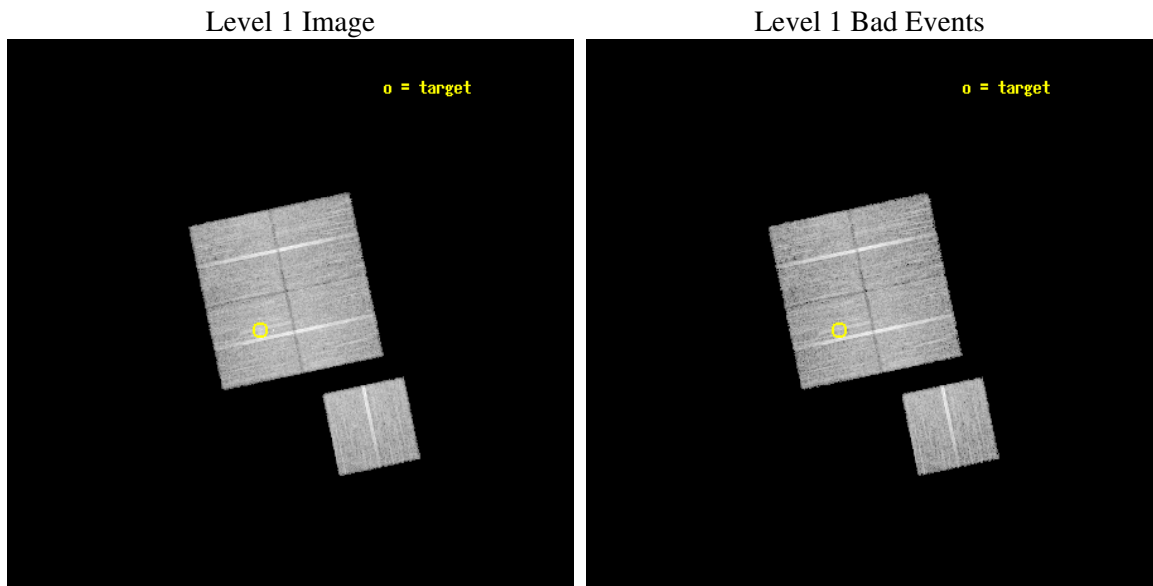
seq_num	800480
obs_id	5767
title	DARK ENERGY WITH X-RAY CLUSTERS: CHANDRA OBSERVATIONS OF 41 HIGH-REDSHIFT CLUSTERS FROM THE 400 deg^2 ROSAT PSPC SURVEY
observer	Dr Alexey Vikhlinin
object	cl1212+2733
dtcycle	0
cycle	P
ra_targ	183.08
dec_targ	27.553611
ra_nom	183.02057504594
dec_nom	27.566771347817
roll_nom	168.0966670958
revision	2
ontime	14774.599971592
livetime	14581.558946061
ontime0	14774.599971592
ontime1	14774.599971592
ontime2	14774.599971592
ontime3	14774.599971592
ontime6	14774.599971592
l2events	42745



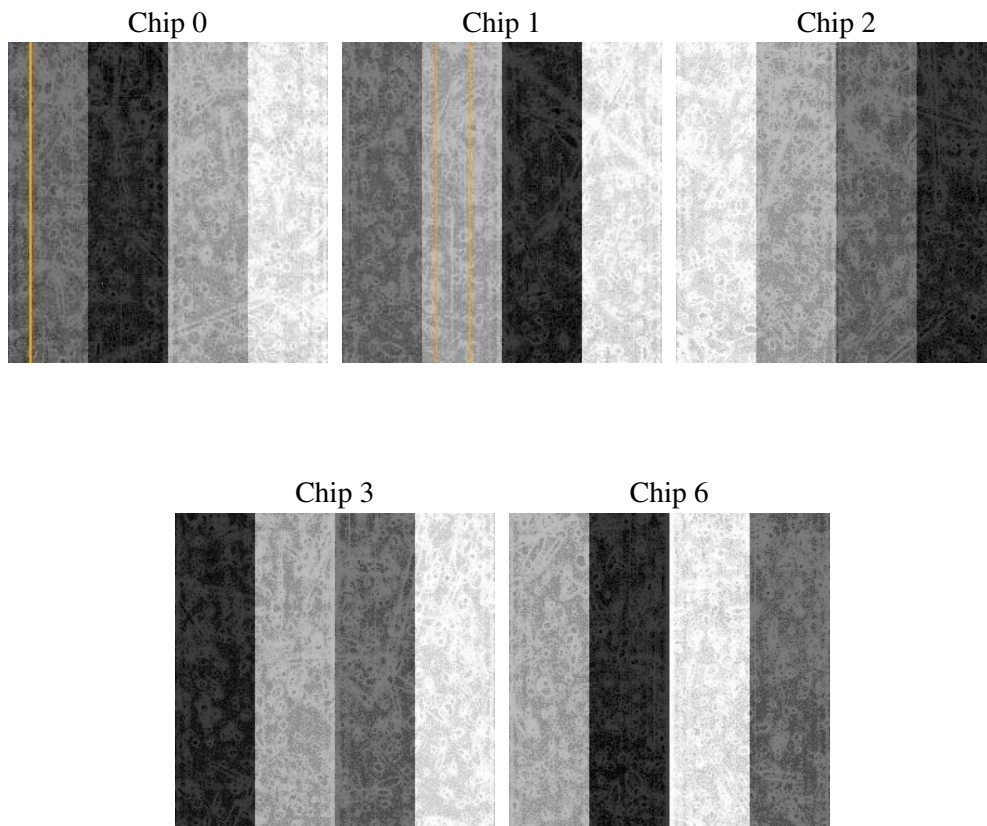
## 2 OBI

### 2.1 OBI

#### 2.1.1 Images



#### 2.1.2 Bias



### 2.1.3 Parameters

obi_num	0
ascdsver	7.6.7
caldsver	3.2.1
date	2006-02-27T12:55:51
revision	2

sched_exp_time	15000.000000
ontime	14778.471940279
ontime0	14778.471920341
ontime1	14778.471920341
ontime2	14778.471920371
ontime3	14778.471940279
ontime6	14778.471920341
l1events	459286

### 2.1.4 Events

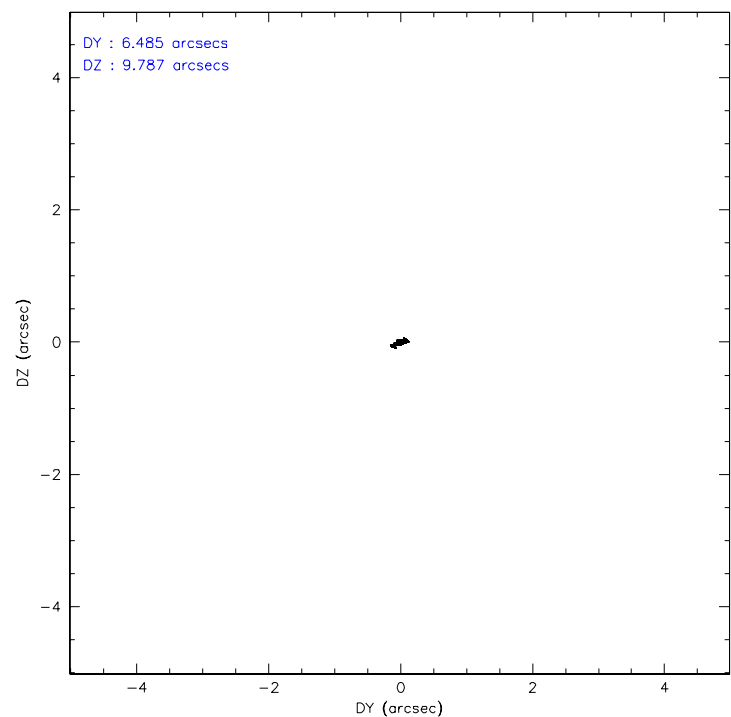
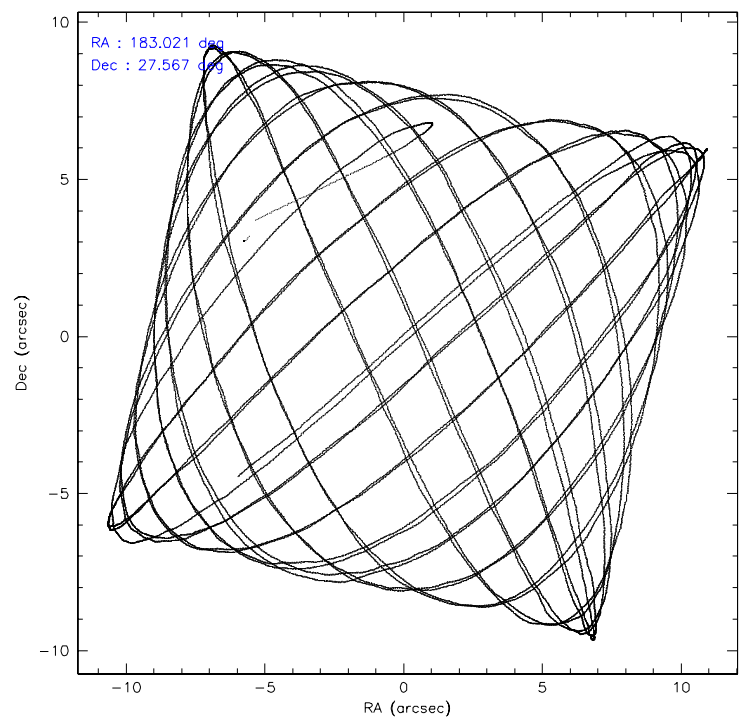
	ccd 0	ccd 1	ccd 2	ccd 3	ccd 6
level 1 events	85657	87186	97104	95861	93478
rejected events	76381	76805	88048	83257	83970
rejected %	89%	88%	90%	86%	89%

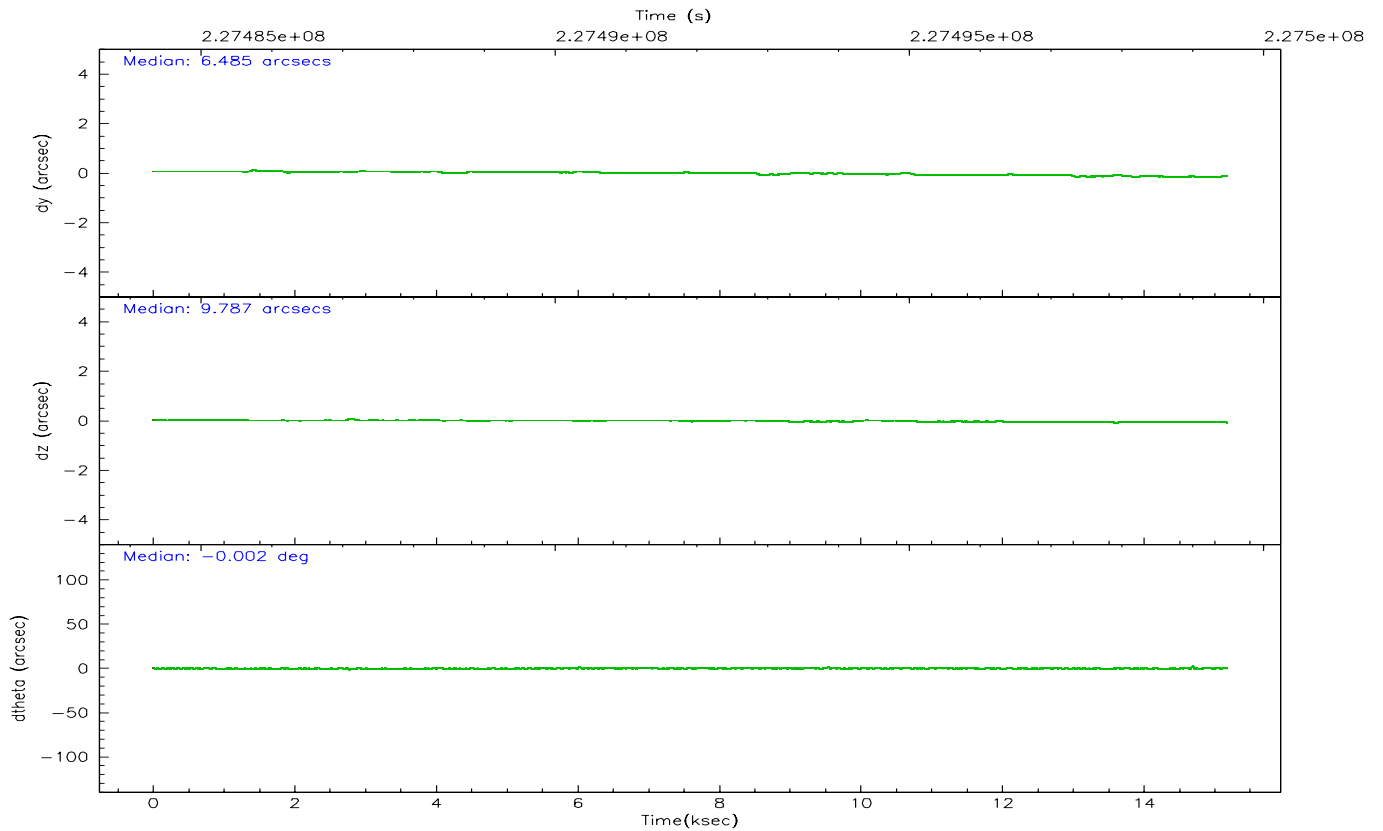
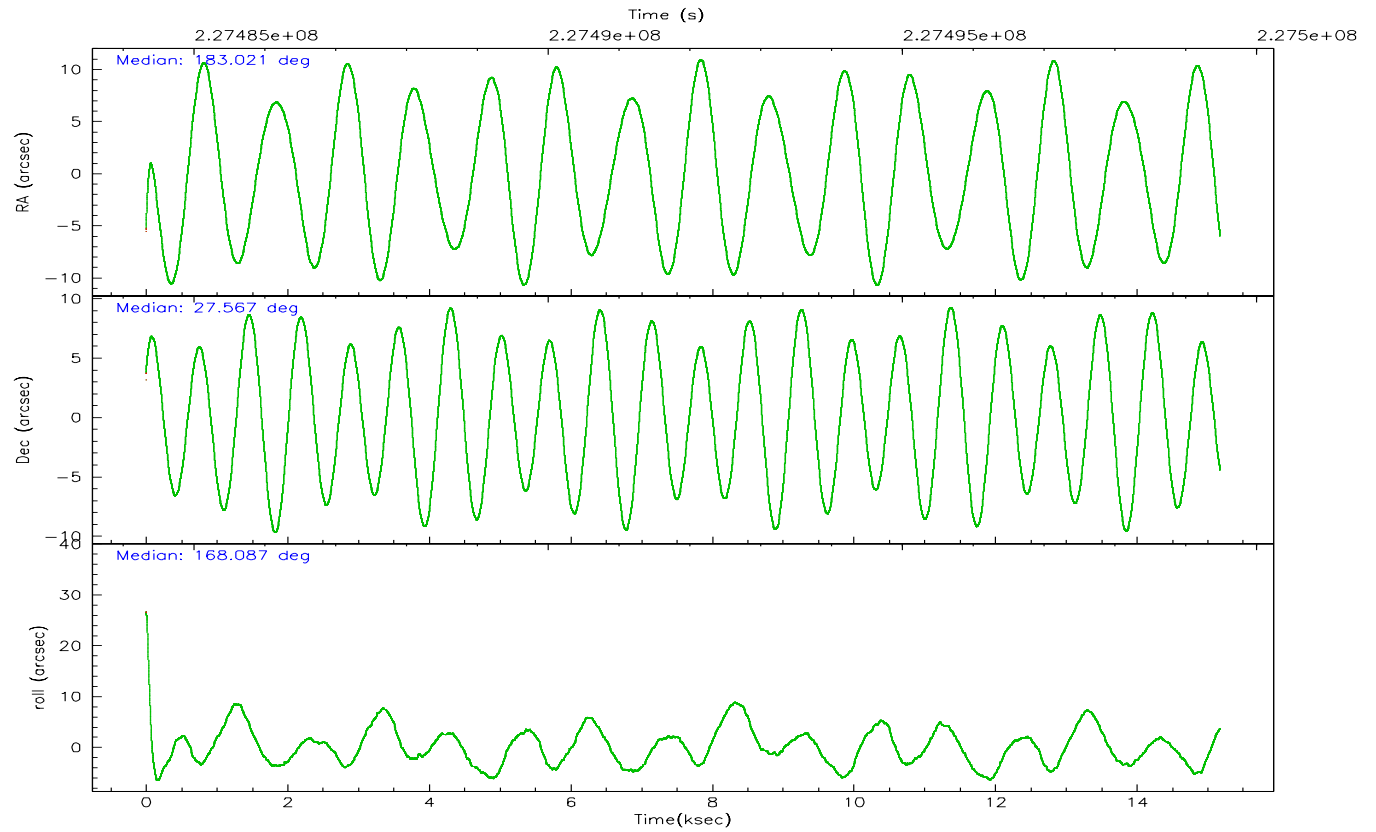
	ccd 0	ccd 1	ccd 2	ccd 3	ccd 6
grade 0 events	3154	3704	3251	6284	3387
	3%	4%	3%	6%	3%
grade 1 events	52	44	61	74	48
	0%	0%	0%	0%	0%
grade 2 events	2248	2274	2120	2282	1939
	2%	2%	2%	2%	2%
grade 3 events	1028	1155	1018	1060	1147
	1%	1%	1%	1%	1%
grade 4 events	1038	1183	1038	1135	1032
	1%	1%	1%	1%	1%
grade 5 events	3183	3488	3037	3628	3566
	3%	4%	3%	3%	3%
grade 6 events	1811	2067	1630	1843	2005
	2%	2%	1%	1%	2%
grade 7 events	73143	73271	84949	79555	80354
	85%	84%	87%	82%	85%

## 2.2 Compared Parameters

Parameter	Planned	Actual	Parameter	Planned	Actual
Instrument	ACIS	ACIS	Obspar format version number	6	6
Detector	ACIS-01236	ACIS-01236	Obspar file type	PREDICTED	ACTUAL
Grating	NONE	NONE	Obspar update status	NONE	UPDATED
Data mode	VFAINT	VFAINT	On-chip summing requested	N	N
Observation mode	POINTING	POINTING	Subarray requested	NONE	NONE
Pointing RA	183.049893	183.0205750459386	Alternating exposures requested	N	N
Pointing Dec	27.575367	27.56677134781687	Primary exposure time	0.000000	3.1
Pointing Roll	167.874379	168.0966670958007			
SIM focus pos (mm)	-0.782348	-0.7809083437167272			
SIM defocus (mm)	0	0.001439871863259334			
SIM translation stage pos (mm)	-225.840463	-225.8458576473255			
SIM translation stage offset (mm)	-7.752	-7.746595355604228			
Observation start time	227484494.184000	227483145.53351			
Observation start date	2005-03-17T22:07:10	2005-03-17T21:45:45			
Observation end time	227499494.184000	227500440.8718			
Observation end date	2005-03-18T02:17:10	2005-03-18T02:34:00			
Read mode	TIMED	TIMED			

### 2.3 Aspect





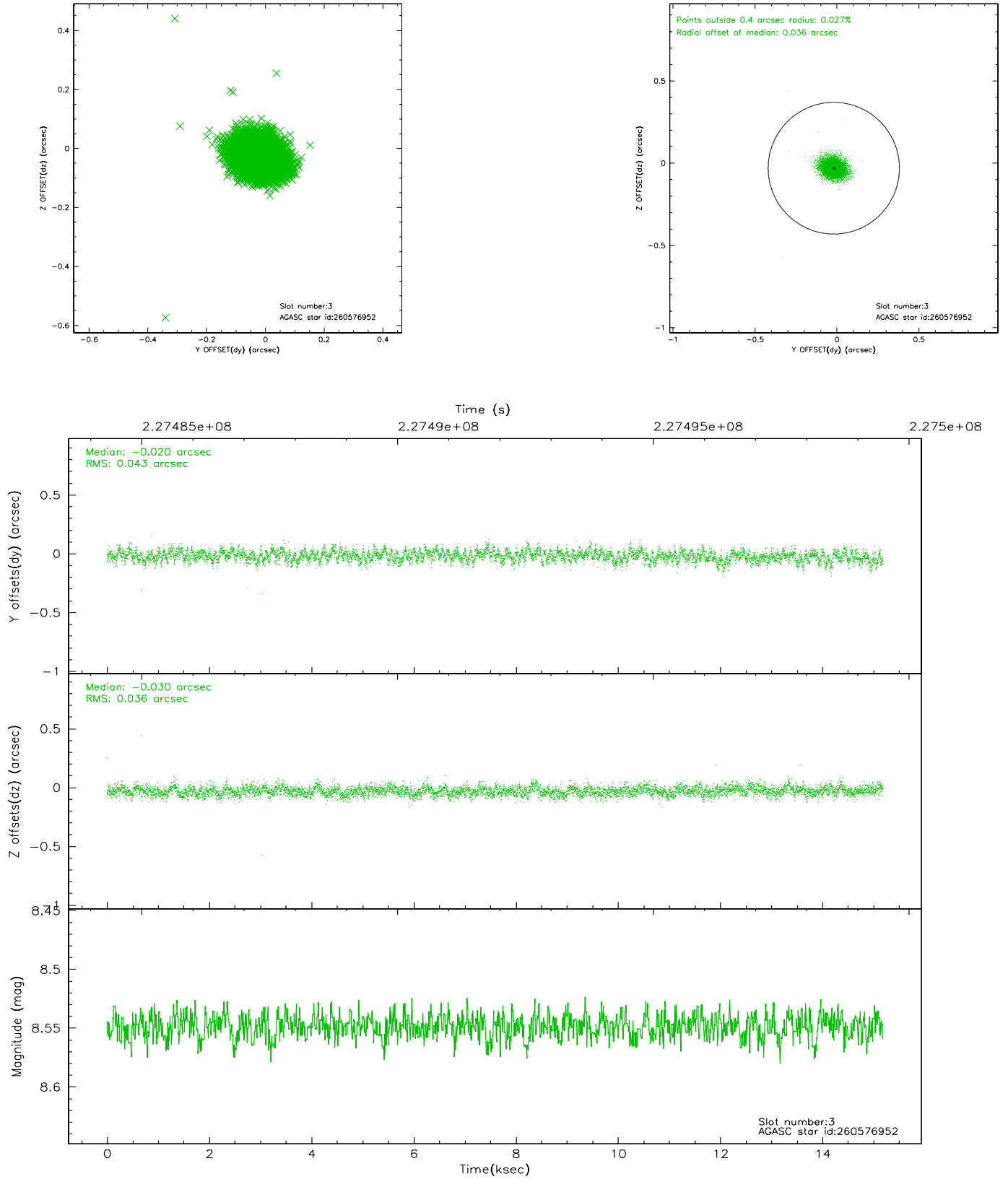
### Slot Statistics

slot	status	id	mag	n_pts	med_dy	med_dz	dr1	dr2	ra	dec	mean_y	mean_z
0	FID	ACIS-I-1	7.24	3703	0.072	-0.059	0.009	0.020	0.000000	0.000000	933.15	-992.33
1	FID	ACIS-I-5	7.22	3702	-0.193	0.074	0.010	0.025	0.000000	0.000000	-1815.06	905.10
2	FID	ACIS-I-6	7.25	3703	0.032	0.056	0.010	0.020	0.000000	0.000000	398.33	1549.93
3	GUIDE	260576952	8.55	7399	-0.020	-0.030	0.058	0.096	183.404142	27.131507	-1445.03	1322.21
4	GUIDE	260577416	8.28	7403	0.040	-0.047	0.069	0.111	183.103729	27.380091	-316.02	651.42
5	GUIDE	260578328	9.90	7394	0.038	0.042	0.124	0.202	183.377446	27.043485	-1428.65	1650.17
6	GUIDE	260580128	8.53	7405	-0.050	0.121	0.084	0.138	182.584429	28.318514	2005.17	-2307.74
7	GUIDE	260583352	6.40	7404	-0.008	-0.089	0.084	0.133	182.692069	27.281504	897.67	1273.16

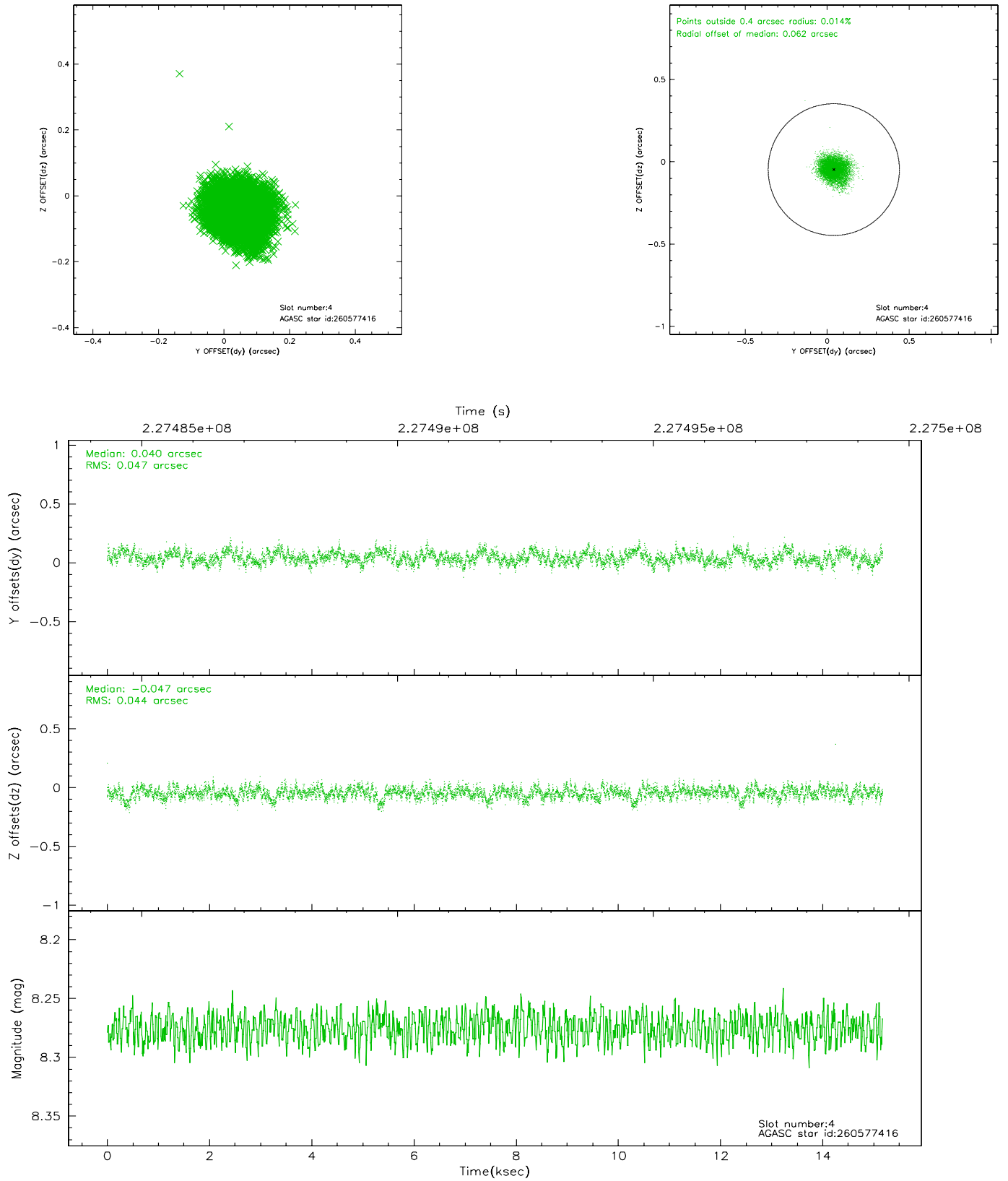


## 2.4 Star Slots

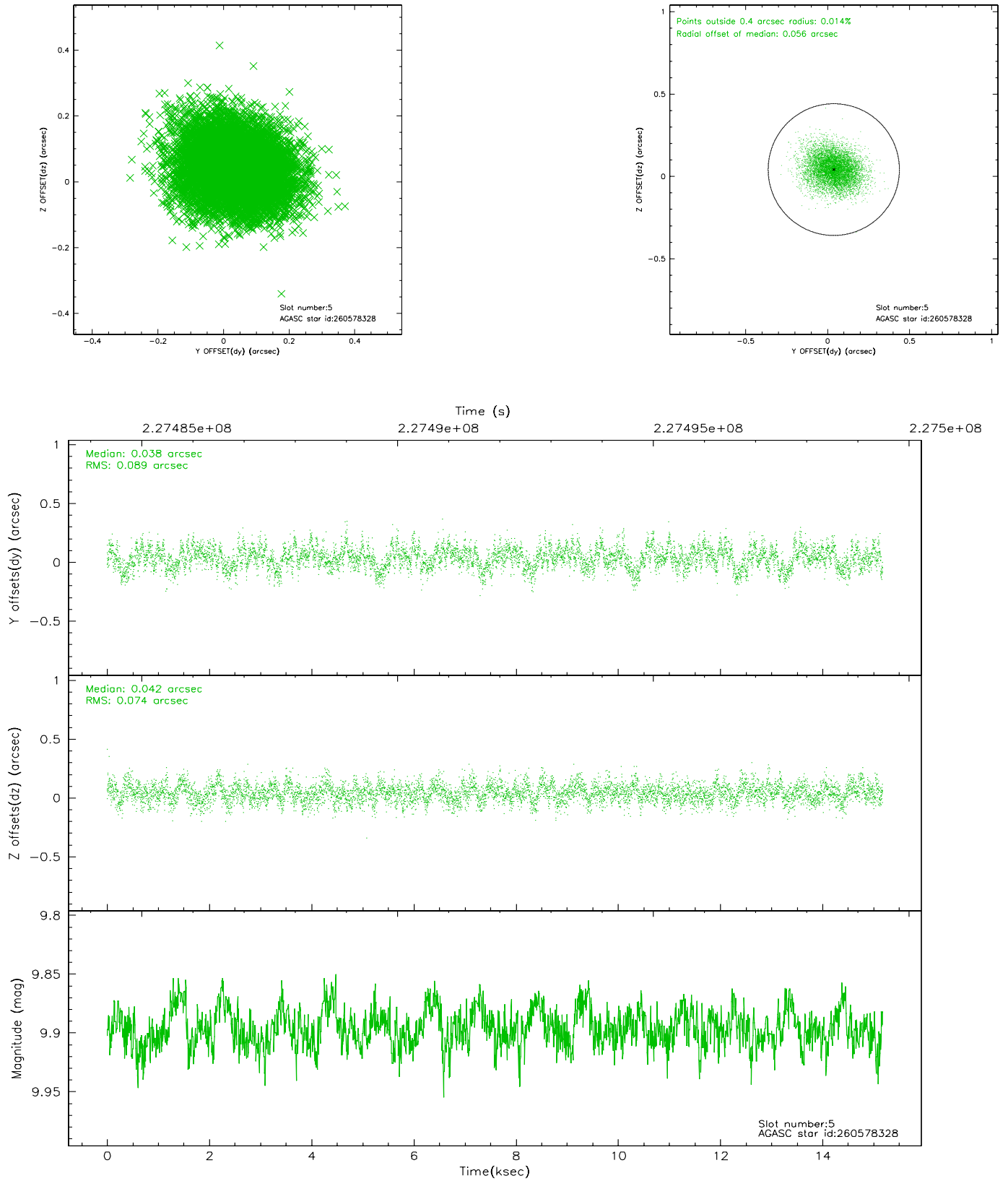
### 2.4.1 Slot 3



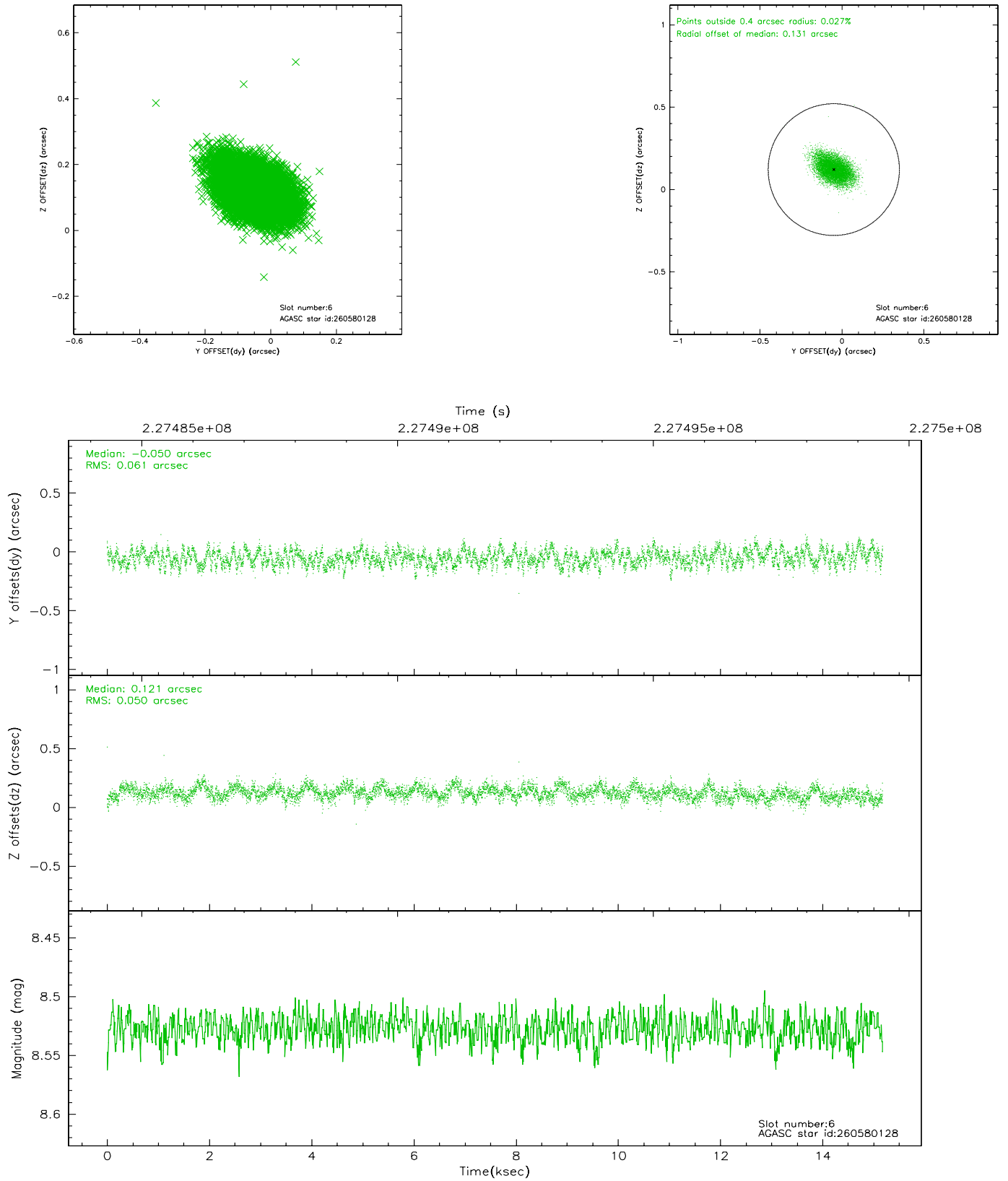
## 2.4.2 Slot 4



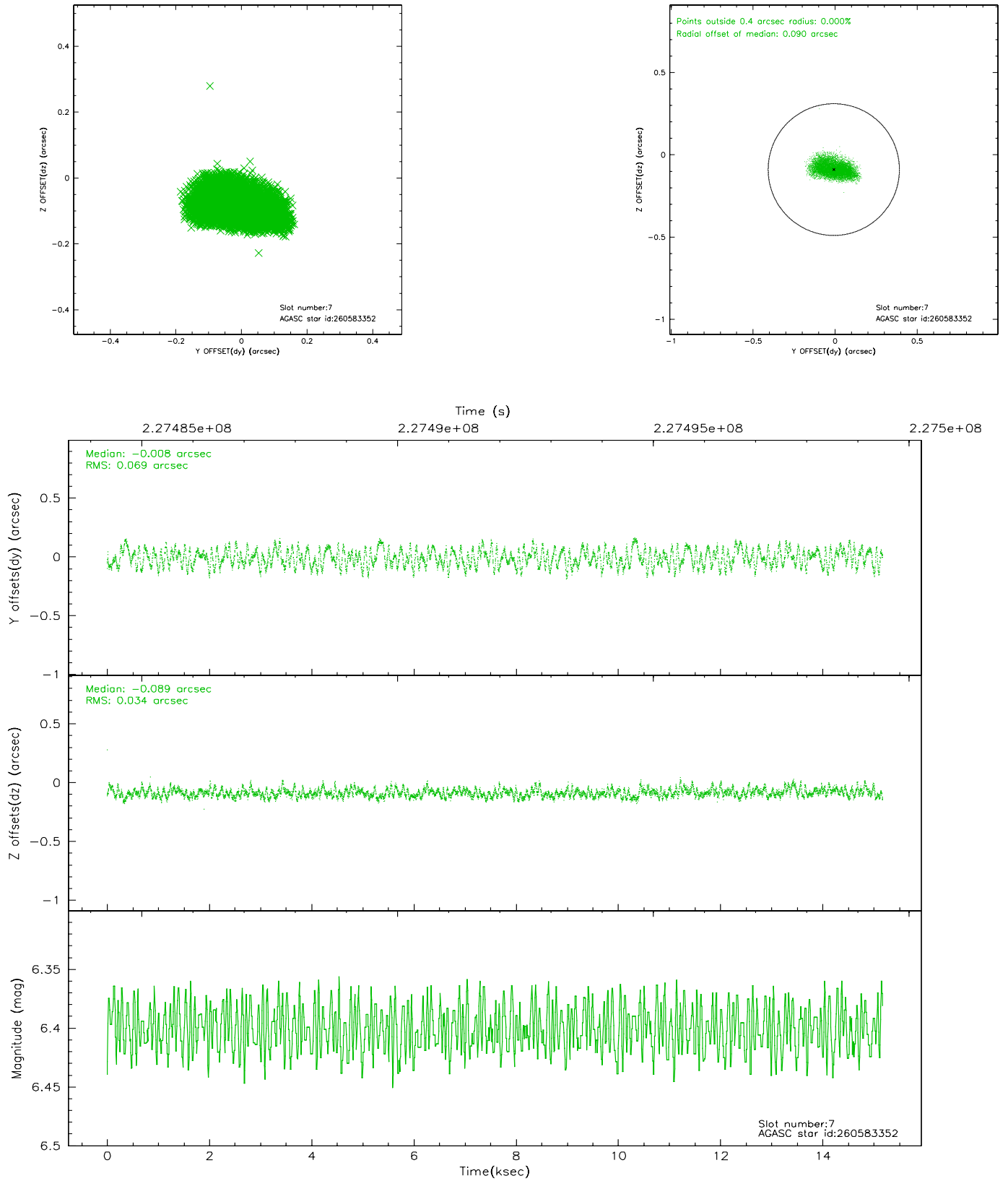
### 2.4.3 Slot 5



## 2.4.4 Slot 6

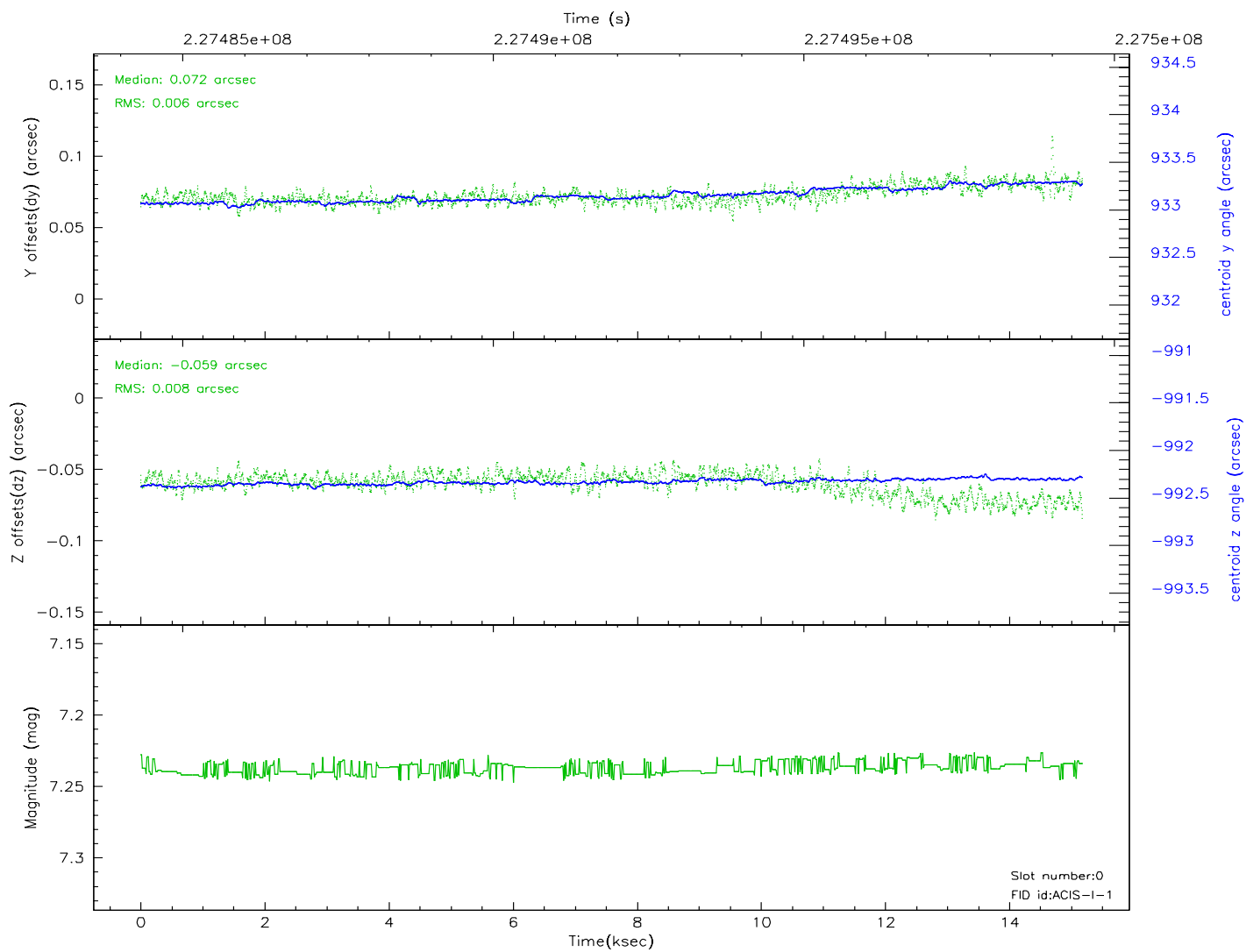
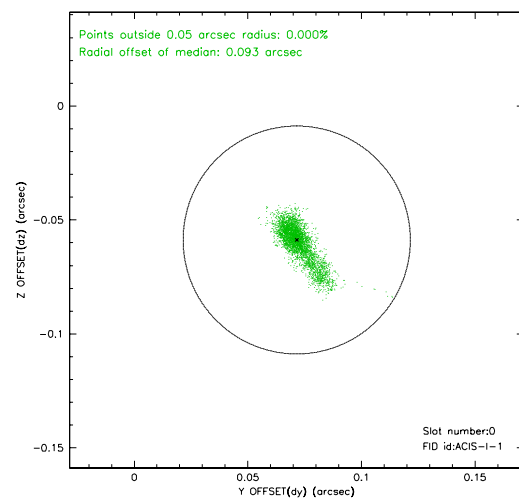
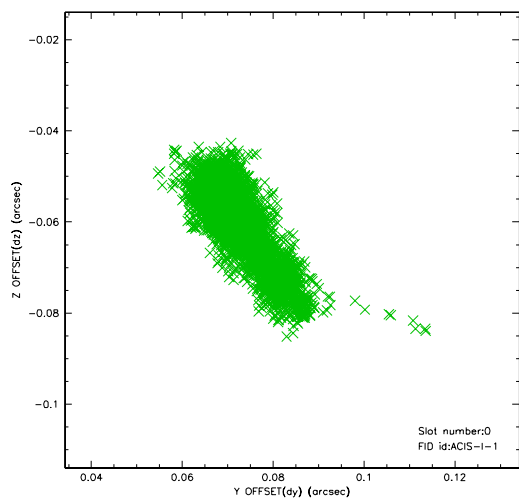


## 2.4.5 Slot 7

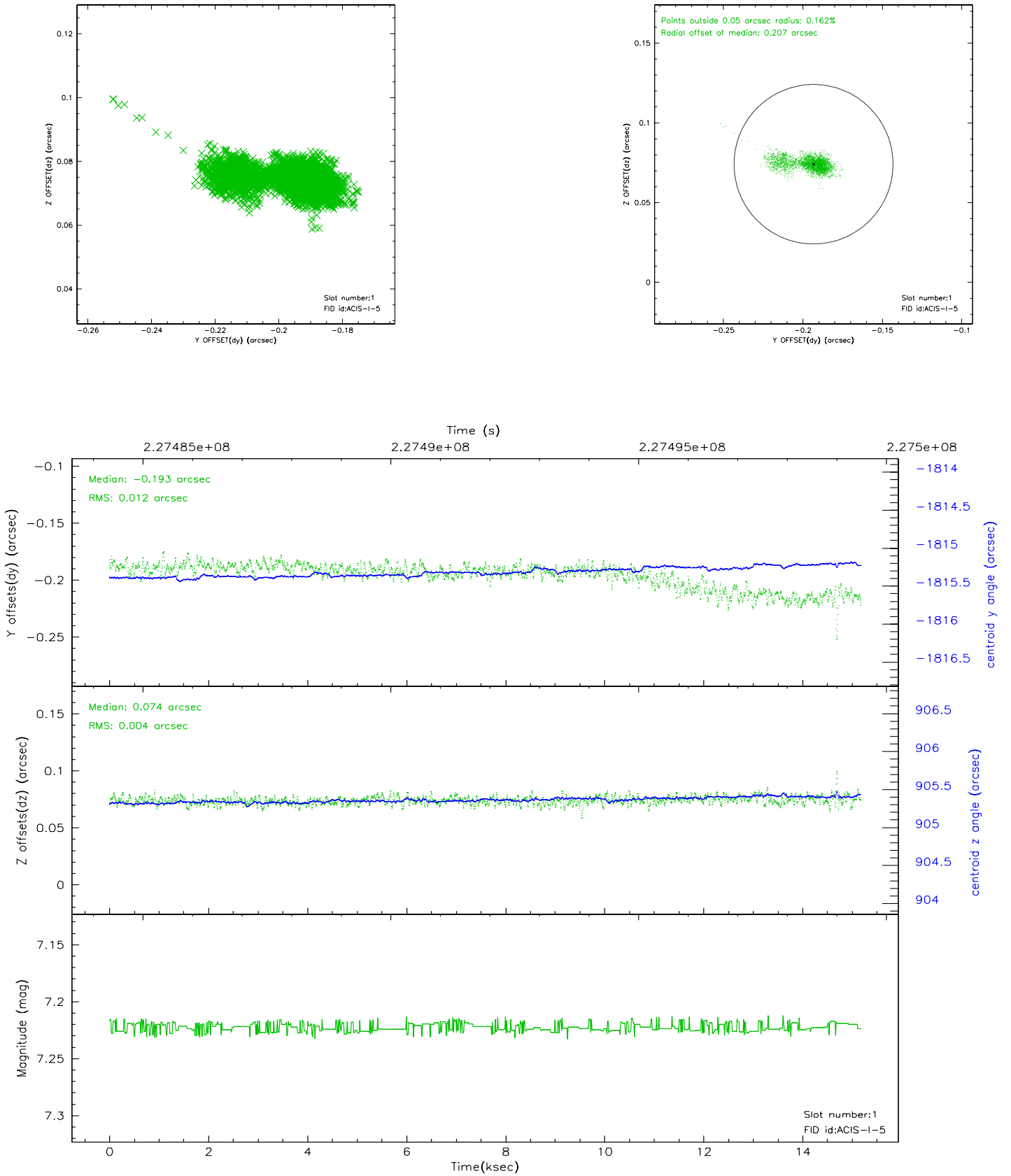


## 2.5 FID Slots

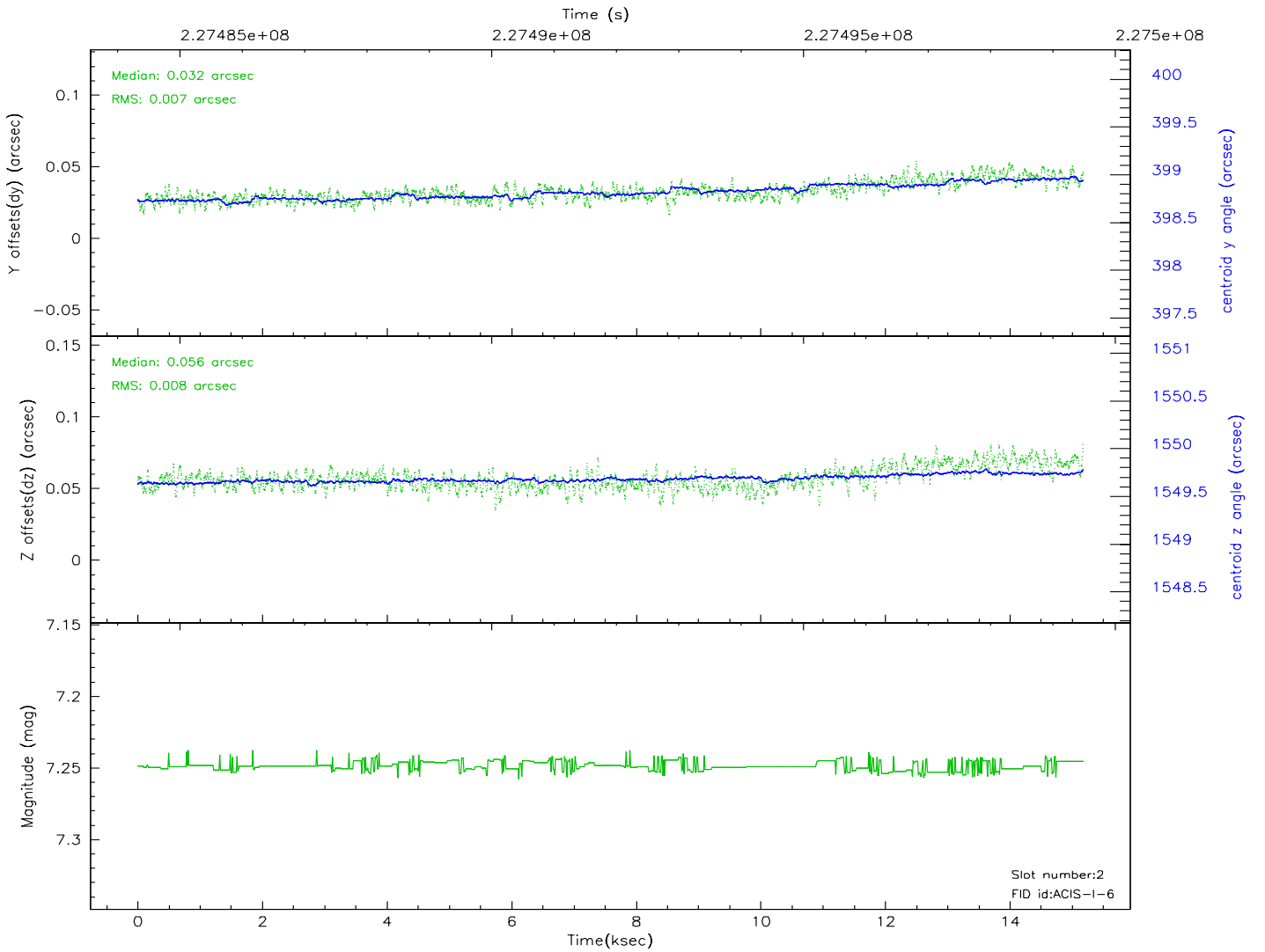
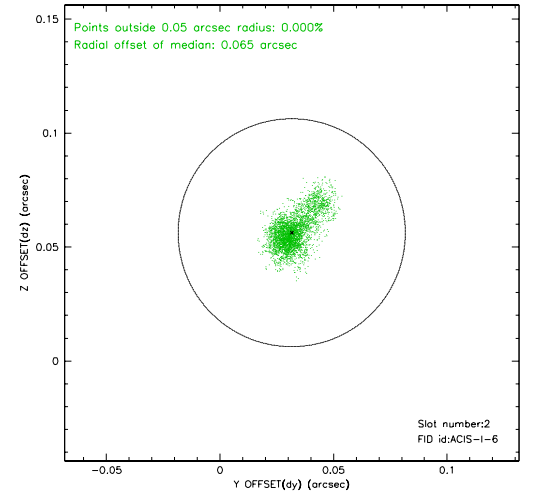
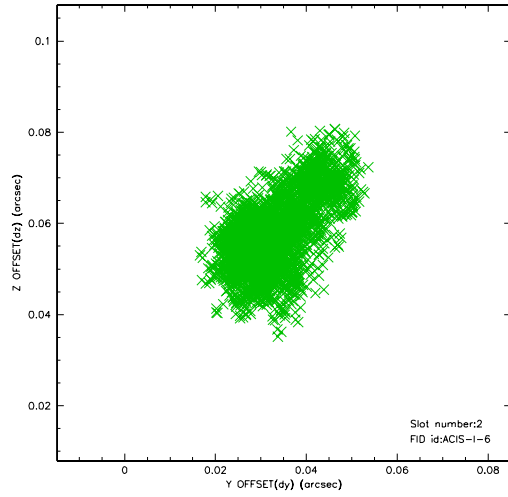
### 2.5.1 Slot 0



## 2.5.2 Slot 1

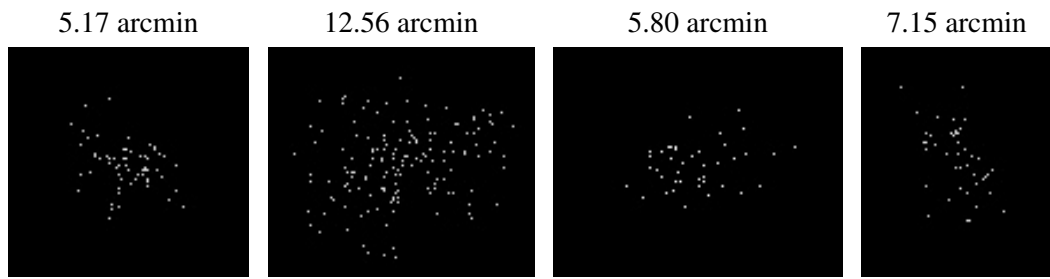


### 2.5.3 Slot 2





### 3 Point Sources



## A Summary

### A.1 Status

V&V Scientist	Beth Sundheim
V&V Date (YYYY-MM-DD)	2006.02.27
V&V Edition	1
V&V Disposition and Status	OK
V&V Charge Time	14.77459

### A.2 Comments