

V&V Reference Report

L2 ASCDS Version : 8.4.3

Observation 5763 - L2 Version 2
Chandra X-Ray Center

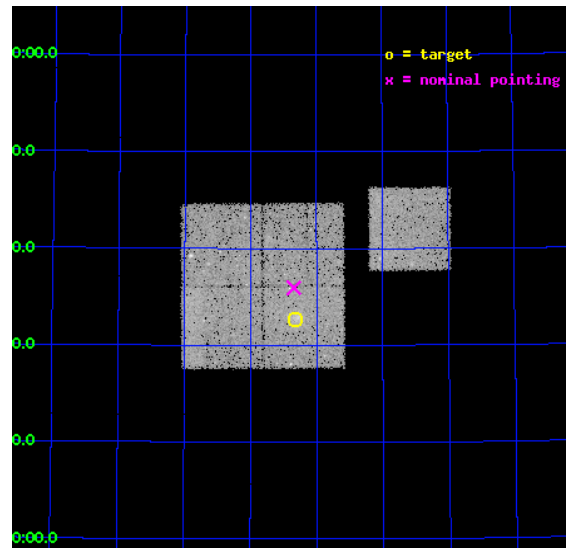
L2 Processing Date : Mar 24 2012

Contents

1	Front	2
2	OBI	3
2.1	OBI	3
2.1.1	Images	3
2.1.2	Bias	3
2.1.3	Parameters	4
2.1.4	Events	4
2.2	Compared Parameters	5
2.3	Aspect	6
2.4	Star Slots	9
2.4.1	Slot 3	9
2.4.2	Slot 4	10
2.4.3	Slot 5	11
2.4.4	Slot 6	12
2.4.5	Slot 7	13
2.5	FID Slots	14
2.5.1	Slot 0	14
2.5.2	Slot 1	15
2.5.3	Slot 2	16
A	Summary	17
A.1	Status	17
A.2	Comments	17

1 Front

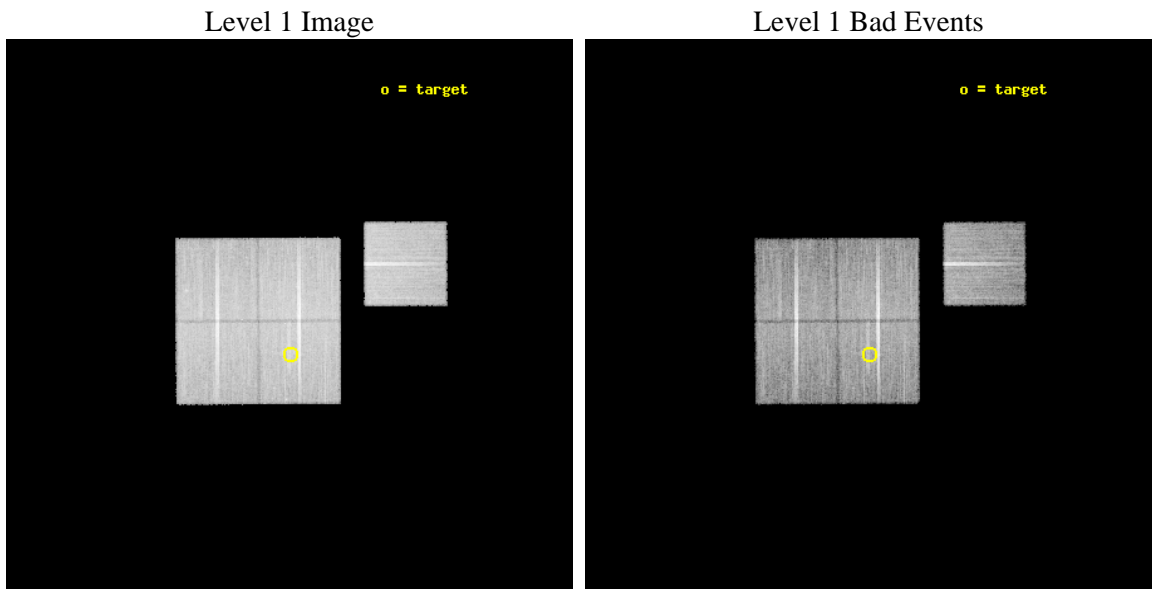
seq_num	800476	Sequence number
obs_id	5763	Observation id
title	DARK ENERGY WITH X-RAY CLUSTERS: CHANDRA OBSERVATIONS OF 41 HIGH-REDSHIFT CLUSTERS FROM THE 400 deg^2 ROSAT PSPC SURVEY	Proposal titl
observer	Dr. Alexey Vikhlinin	Principal investigator
object	cl1357+6232	Source name
dtcycle	0	
cycle	P	events from which exps? Prim/Second/Both
ra_targ	209.330833	Observer's specified target RA [deg]
dec_targ	62.545	Observer's specified target Dec [deg]
ra_nom	209.33578047592	Nominal RA [deg]
dec_nom	62.599277996241	Nominal Dec [deg]
roll_nom	89.704298150936	Nominal Roll [deg]
revision	2	Processing version of data
ontime	26024.458959639	Sum of GTIs [s]
livetime	25684.430244403	Livetime [s]
ontime0	26021.317949504	Sum of GTIs [s]
ontime1	26024.458959669	Sum of GTIs [s]
ontime2	26021.317959517	Sum of GTIs [s]
ontime3	26024.458959639	Sum of GTIs [s]
ontime6	26027.599949926	Sum of GTIs [s]
l2events	75990	Number of level 2 events



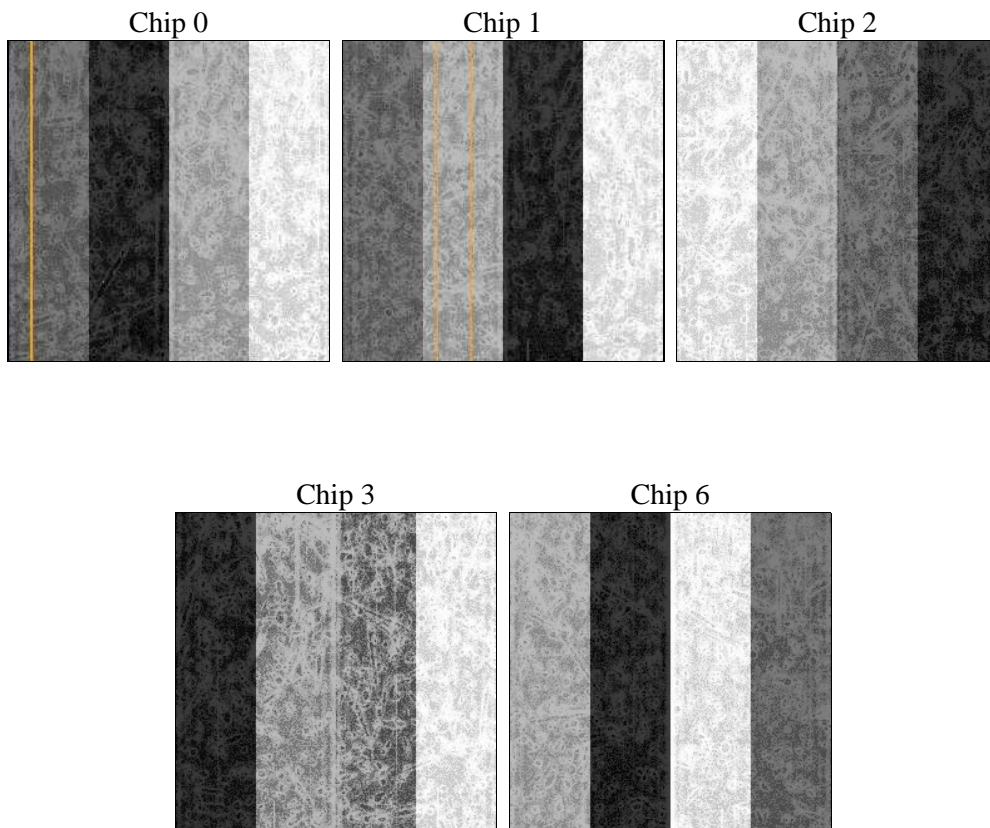
2 OBI

2.1 OBI

2.1.1 Images



2.1.2 Bias



2.1.3 Parameters

obi_num	0	Obi number	sched_exp_time	25858.280000	[s] Scheduled observation exposure time
ascdsver	8.4.3	Processing system revision	ontime	26024.458959639	Sum of GTIs [s]
caldsver	4.4.8	 	ontime0	26021.317949504	Sum of GTIs [s]
date	2012-03-24T06:23:21	Date and time of file creation	ontime1	26024.458959669	Sum of GTIs [s]
revision	2	Processing version of data	ontime2	26021.317959517	Sum of GTIs [s]
			ontime3	26024.458959639	Sum of GTIs [s]
			ontime6	26027.599949926	Sum of GTIs [s]
			l1events	912548	Number of level 1 events

2.1.4 Events

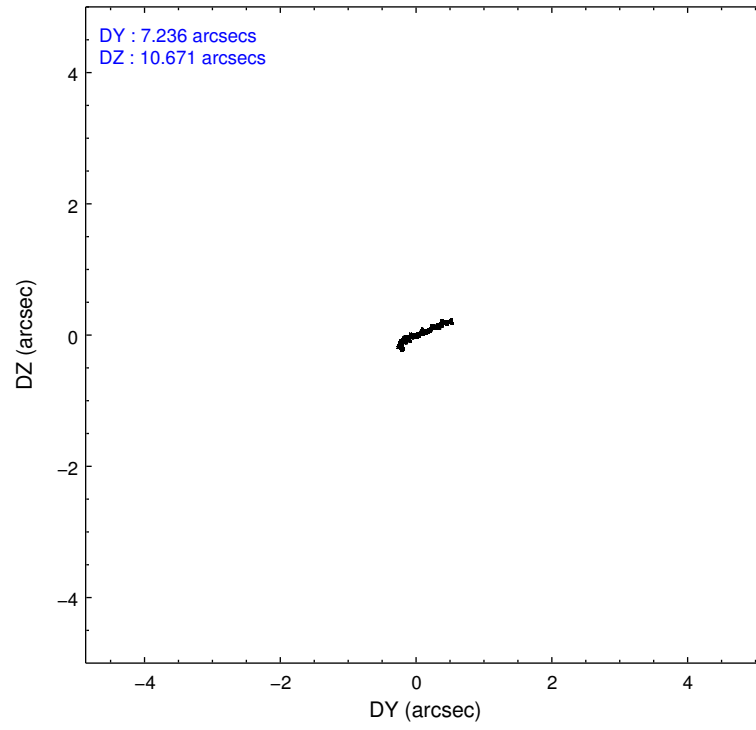
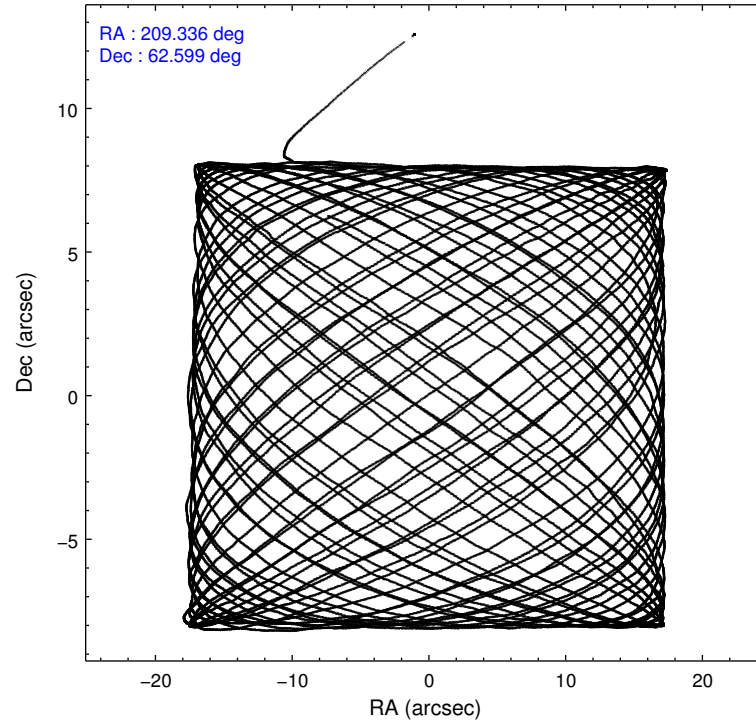
	ccd 0	ccd 1	ccd 2	ccd 3	ccd 6
level 1 events	173244	172555	198636	185590	182523
rejected events	155187	152763	181528	167355	164678
rejected %	89%	88%	91%	90%	90%

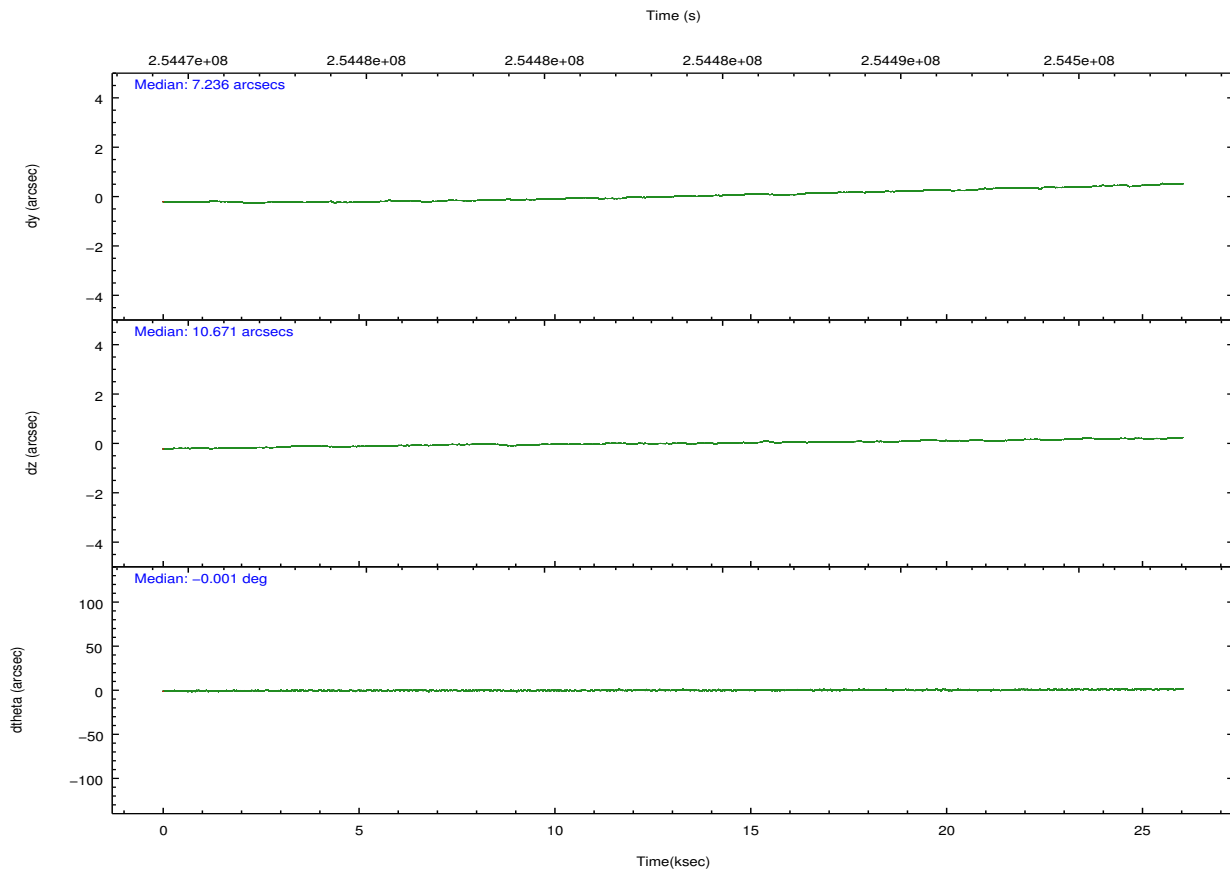
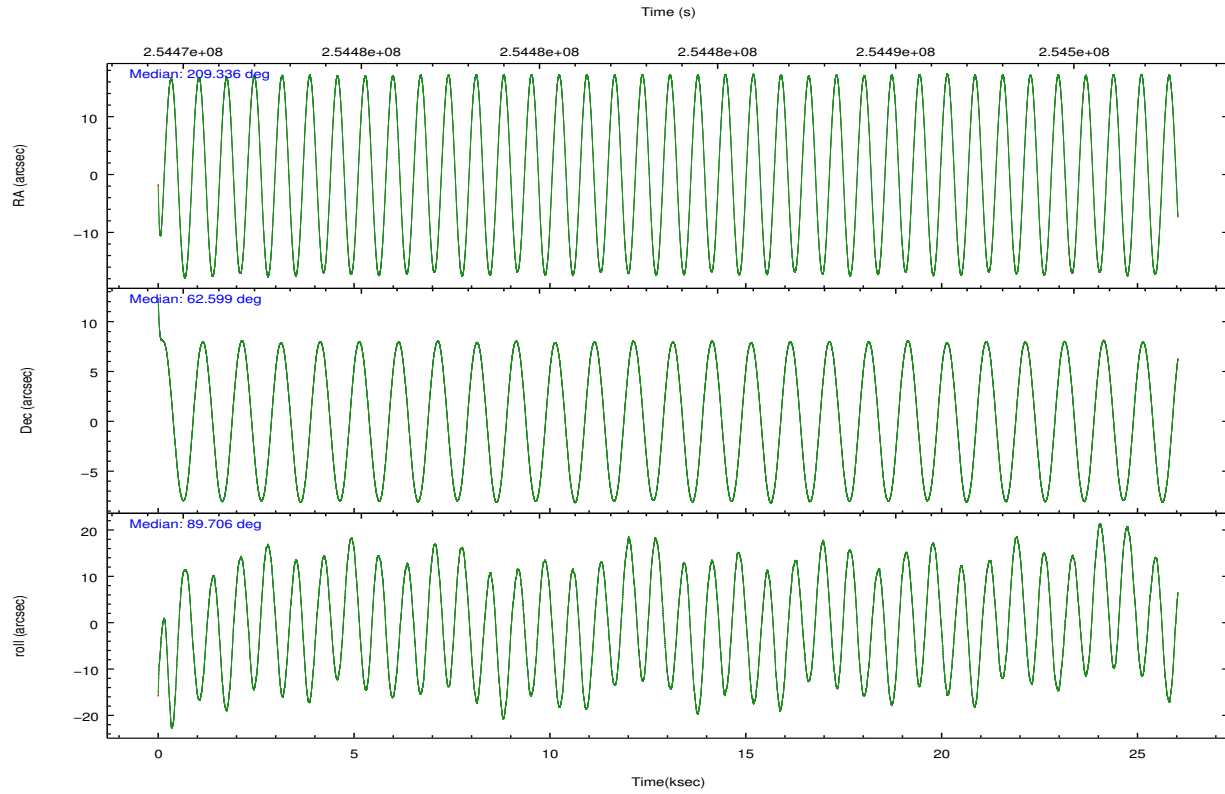
	ccd 0	ccd 1	ccd 2	ccd 3	ccd 6
grade 0 events	6595	7002	6115	6962	6222
	3%	4%	3%	3%	3%
grade 1 events	93	78	123	107	88
	0%	0%	0%	0%	0%
grade 2 events	4206	4366	3948	3754	3831
	2%	2%	1%	2%	2%
grade 3 events	2036	2283	1948	2060	2071
	1%	1%	0%	1%	1%
grade 4 events	1930	2231	2005	2046	2001
	1%	1%	1%	1%	1%
grade 5 events	6211	6852	5862	7339	7197
	3%	3%	2%	3%	3%
grade 6 events	3439	4065	3248	3554	3861
	1%	2%	1%	1%	2%
grade 7 events	148734	145678	175387	159768	157252
	85%	84%	88%	86%	86%

2.2 Compared Parameters

Parameter	Planned	Actual	Parameter	Planned	Actual
Instrument	ACIS	ACIS	Obspar format version number	7	7
Detector	ACIS-01236	ACIS-01236	Obspar file type	PREDICTED	ACTUAL
Grating	NONE	NONE	Obspar update status	NONE	UPDATED
Data mode	VFAINT	VFAINT	Number of optional ACIS chips dropped	0	0
Observation mode	POINTING	POINTING	On-chip summing requested	N	N
[deg] Pointing RA	209.365440	209.3357804759247	Subarray requested	NONE	NONE
[deg] Pointing Dec	62.575516	62.59927799624142	Alternating exposures requested	N	N
[deg] Pointing Roll	89.469287	89.70429815093649	[s] Primary exposure time	0.000000	3.1
[mm] SIM focus pos	-0.782348	-0.7809083437167272			
[mm] SIM defocus	0	0.001439871863259334			
[mm] SIM translation stage pos	-225.840463	-225.8433433320239			
[mm] SIM translation stage offset	-7.752	-7.749109670905796			
[s] Observation start time (MET)	254470766.184000	254469674.77155			
Observation start date	2006-01-24T06:18:21	2006-01-24T06:01:14			
[s] Observation end time (MET)	254496625.184000	254496855.72281			
Observation end date	2006-01-24T13:29:20	2006-01-24T13:34:15			
Read mode	TIMED	TIMED			

2.3 Aspect



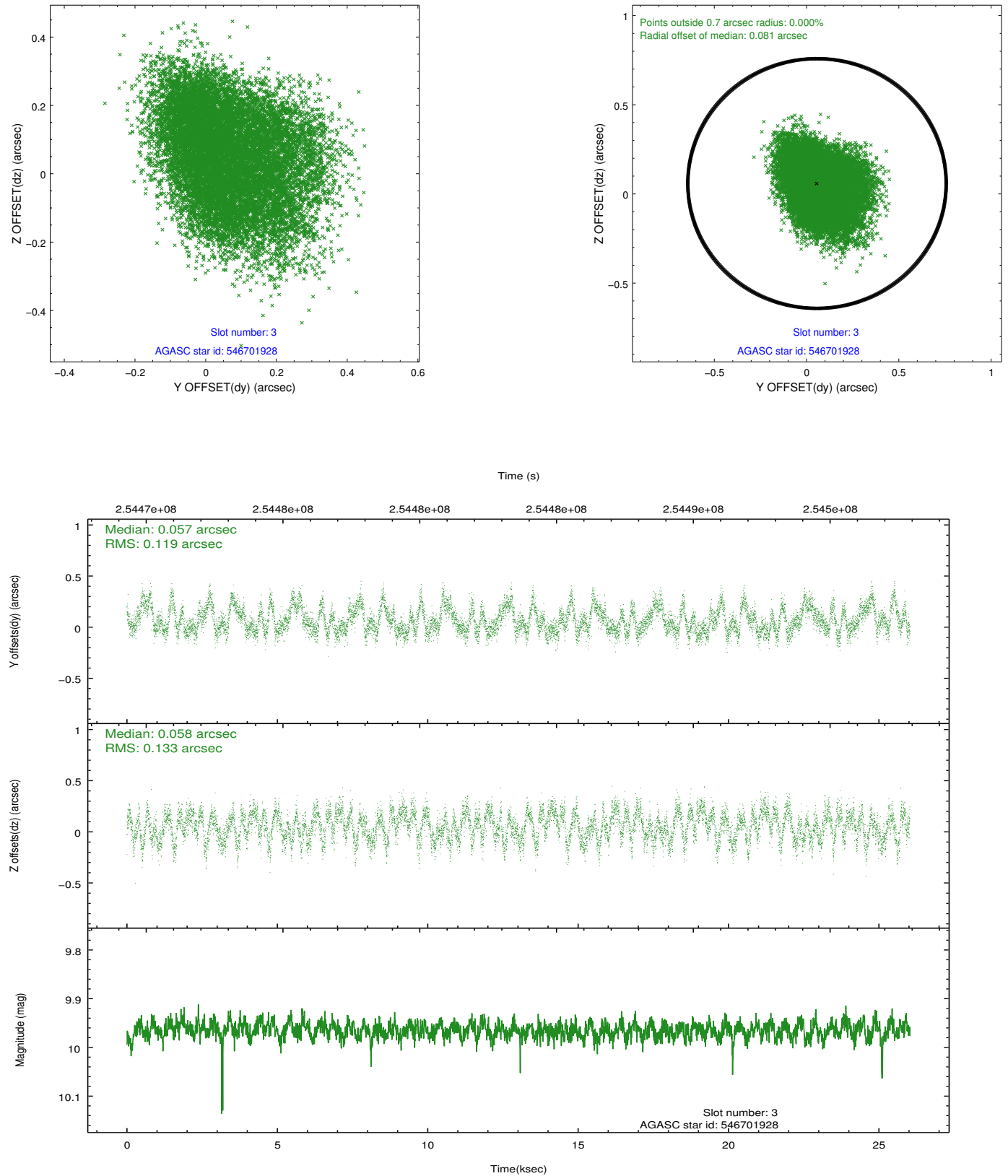


Slot Statistics

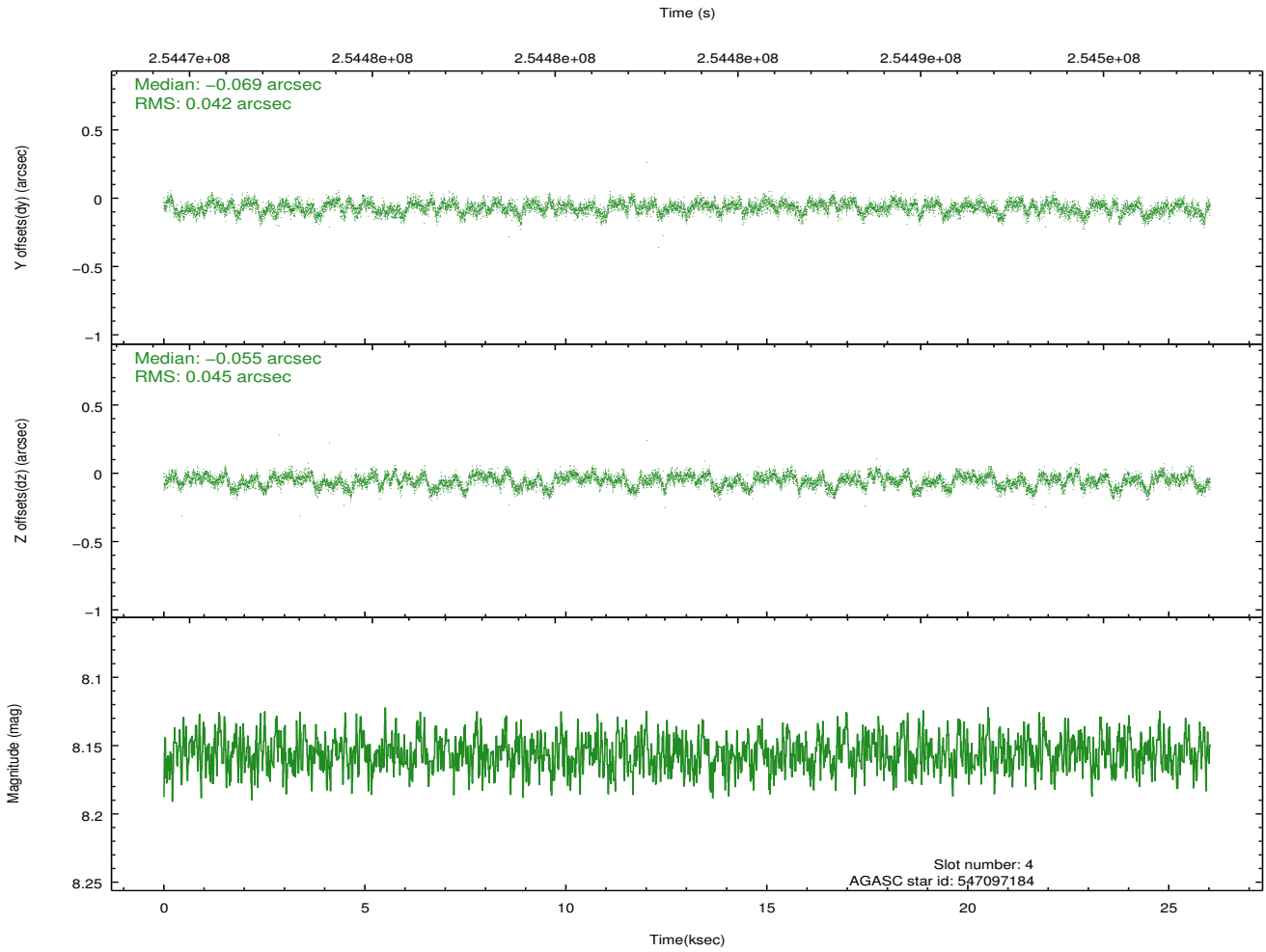
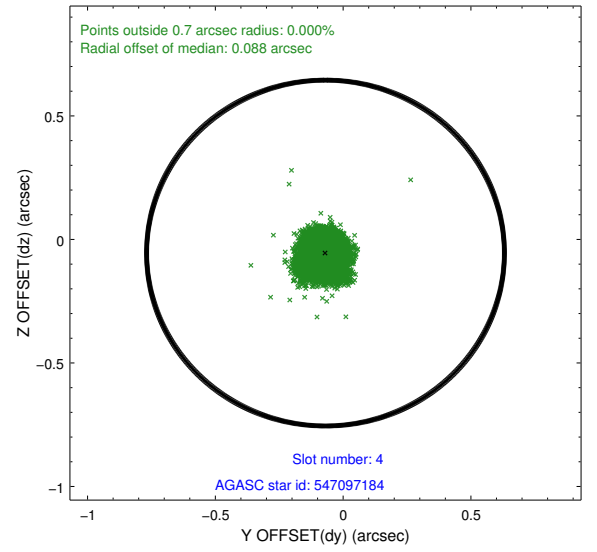
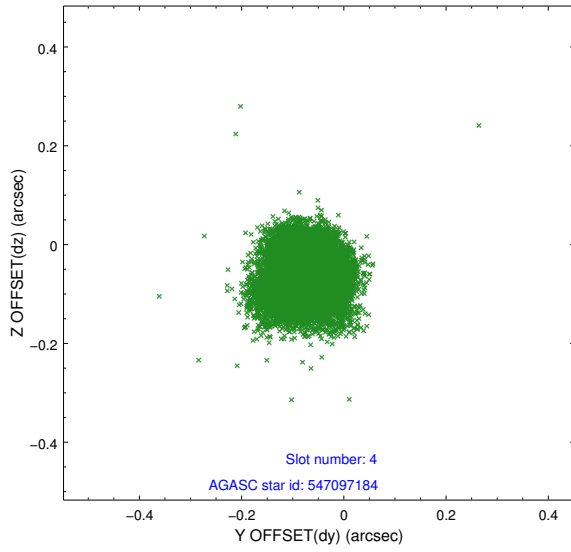
slot	status	id	mag	n_pts	med_dy	med_dz	dr1	dr2	ra	dec	mean_y	mean_z
0	FID	ACIS-I-1	7.24	6349	0.126	-0.136	0.010	0.017	0.000000	0.000000	932.36	-993.39
1	FID	ACIS-I-5	7.22	6348	-0.238	0.105	0.008	0.013	0.000000	0.000000	-1816.03	904.29
2	FID	ACIS-I-6	7.25	6350	0.022	0.103	0.008	0.015	0.000000	0.000000	397.71	1548.90
3	GUIDE	546701928	9.96	12684	0.057	0.058	0.191	0.299	208.434731	62.460629	-416.96	1545.32
4	GUIDE	547097184	8.16	12699	-0.069	-0.055	0.065	0.107	208.939860	63.149888	2063.91	711.65
5	GUIDE	547100152	7.45	12697	-0.009	-0.119	0.065	0.105	209.266185	62.792313	779.38	171.08
6	GUIDE	547102216	8.99	12693	-0.075	0.083	0.073	0.117	208.623896	62.904596	1180.41	1227.08
7	GUIDE	547102544	10.02	12684	0.102	0.044	0.188	0.303	209.734827	62.868804	1063.32	-596.36

2.4 Star Slots

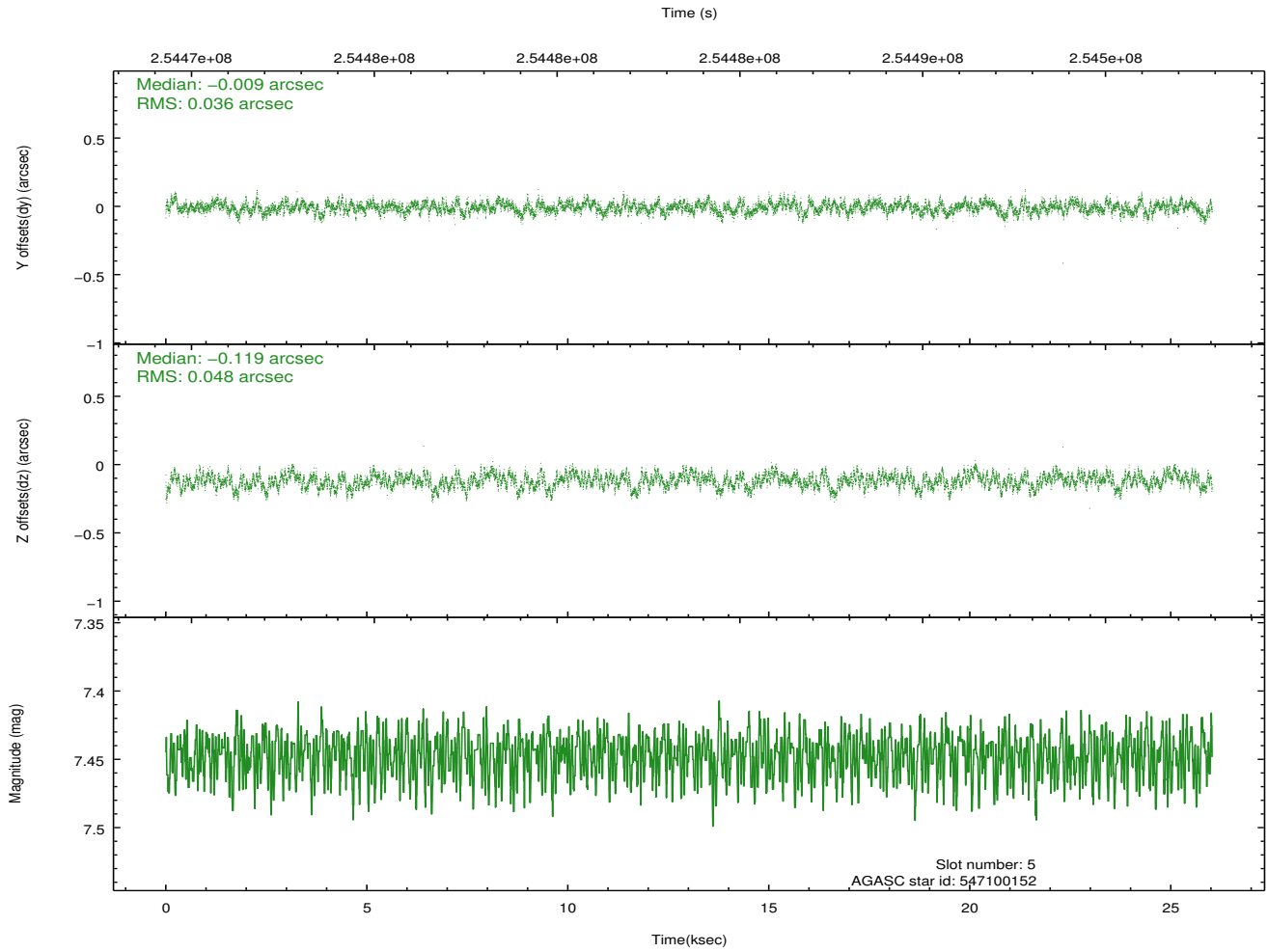
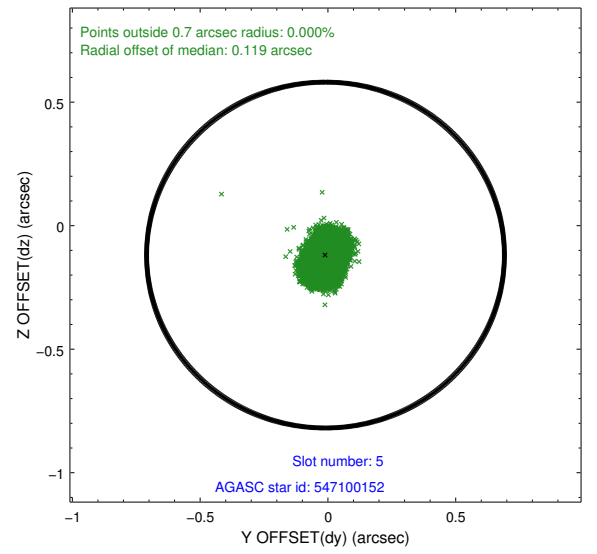
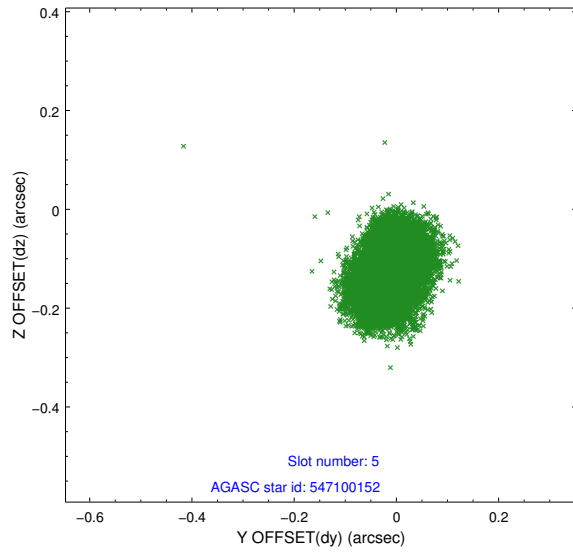
2.4.1 Slot 3



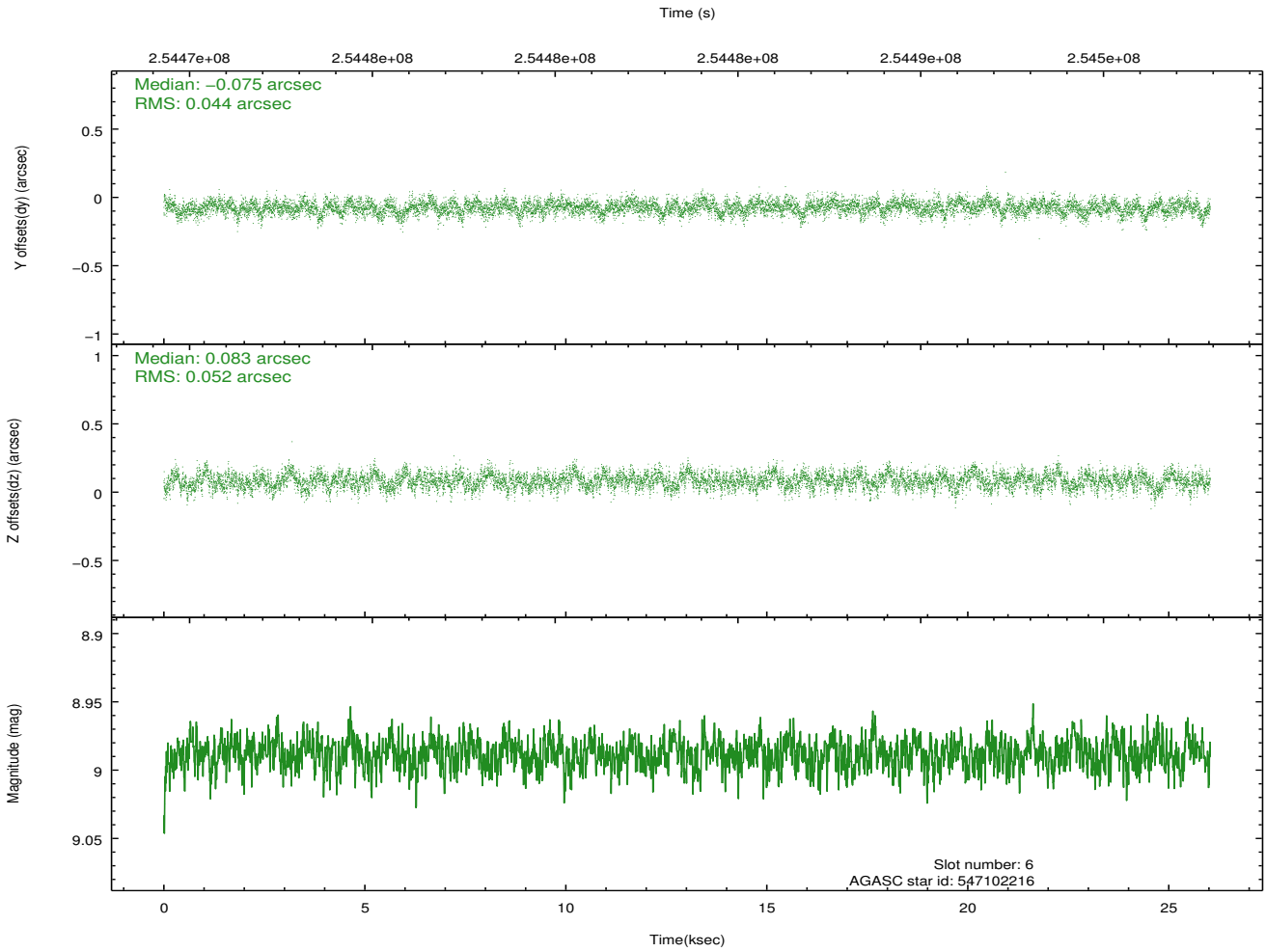
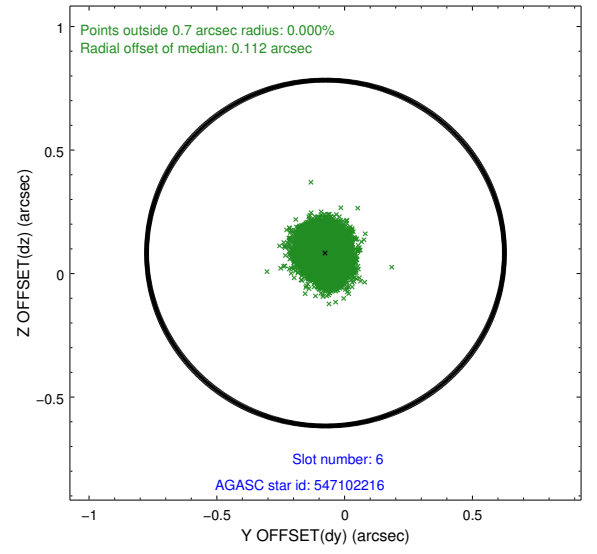
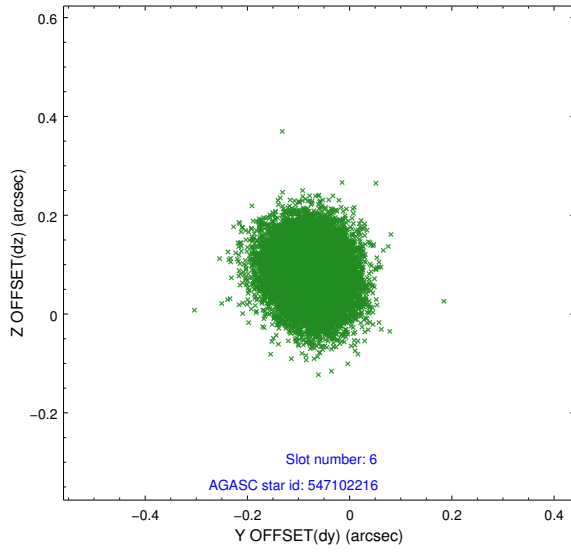
2.4.2 Slot 4



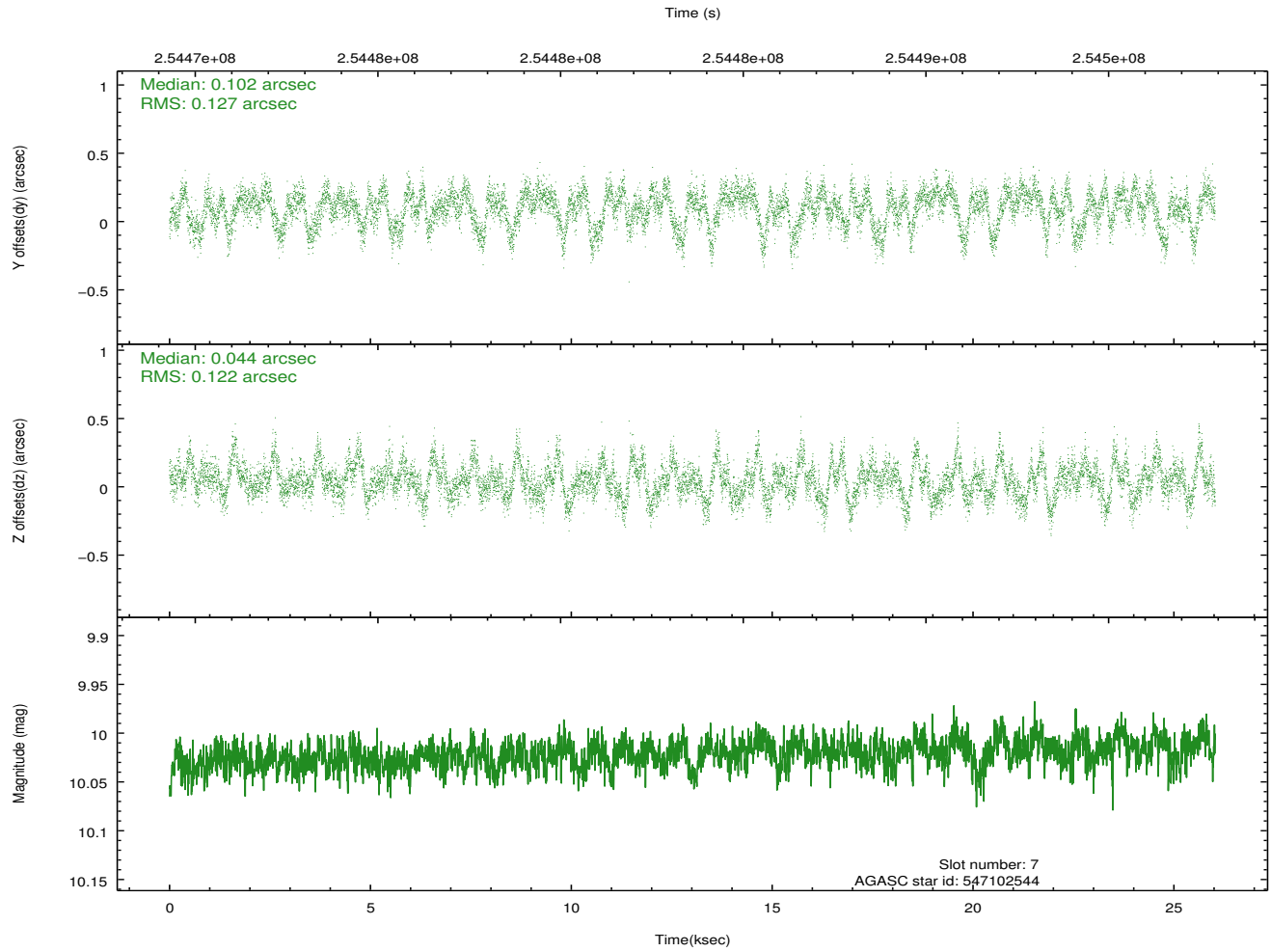
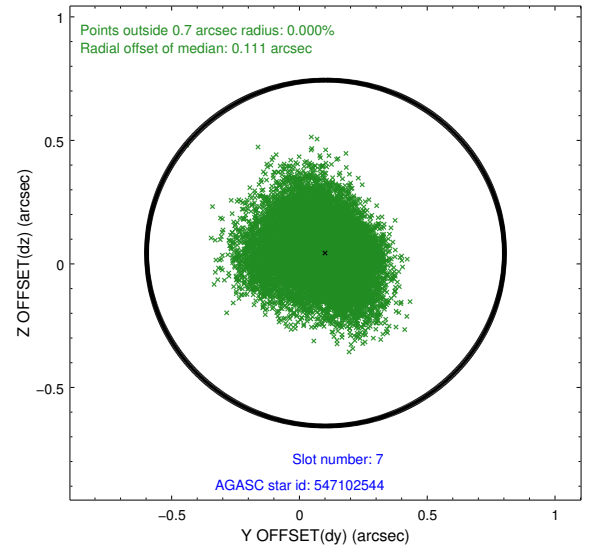
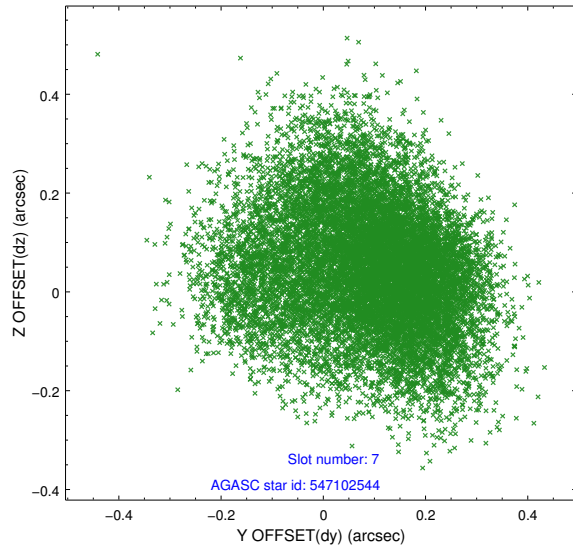
2.4.3 Slot 5



2.4.4 Slot 6

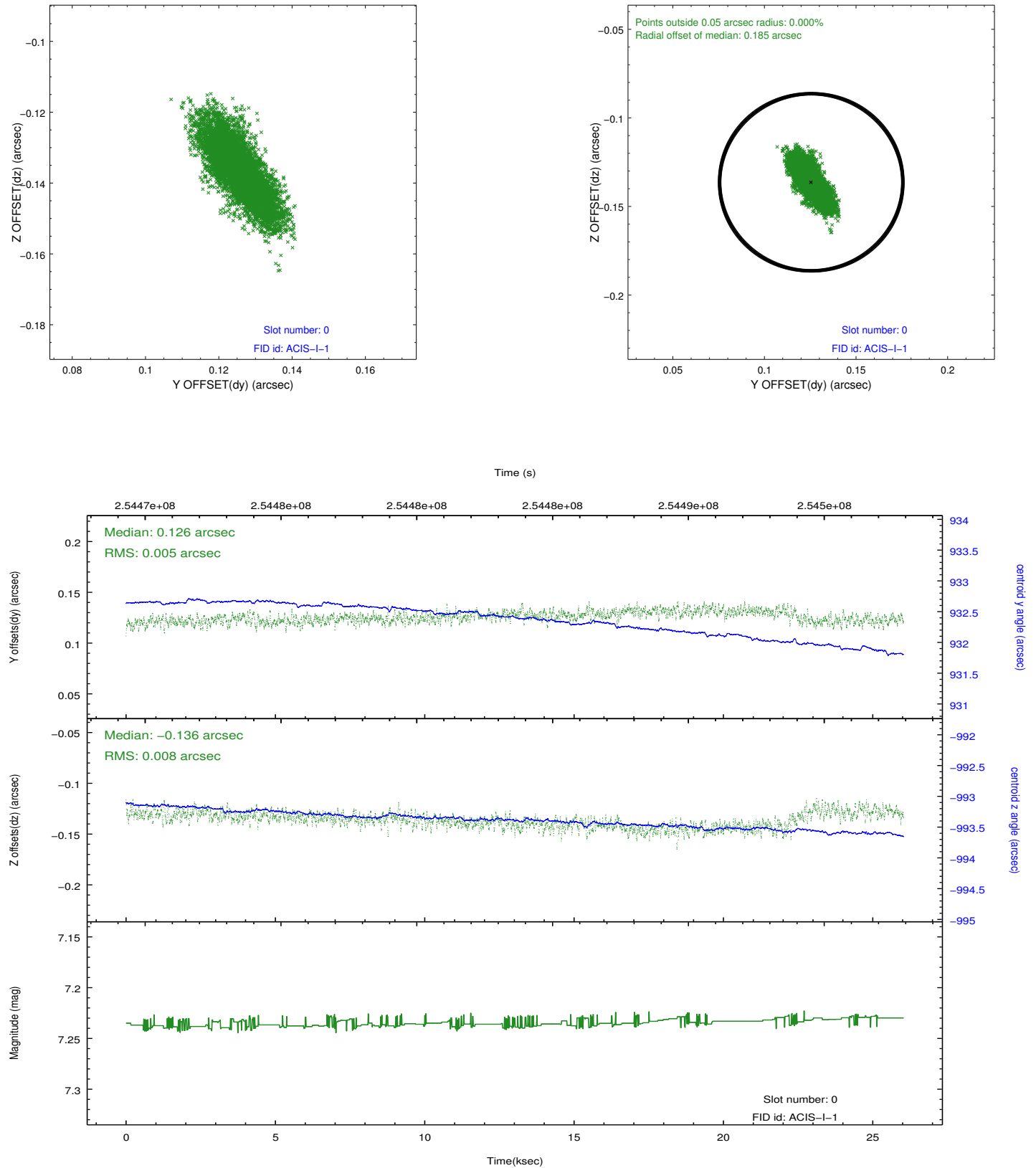


2.4.5 Slot 7

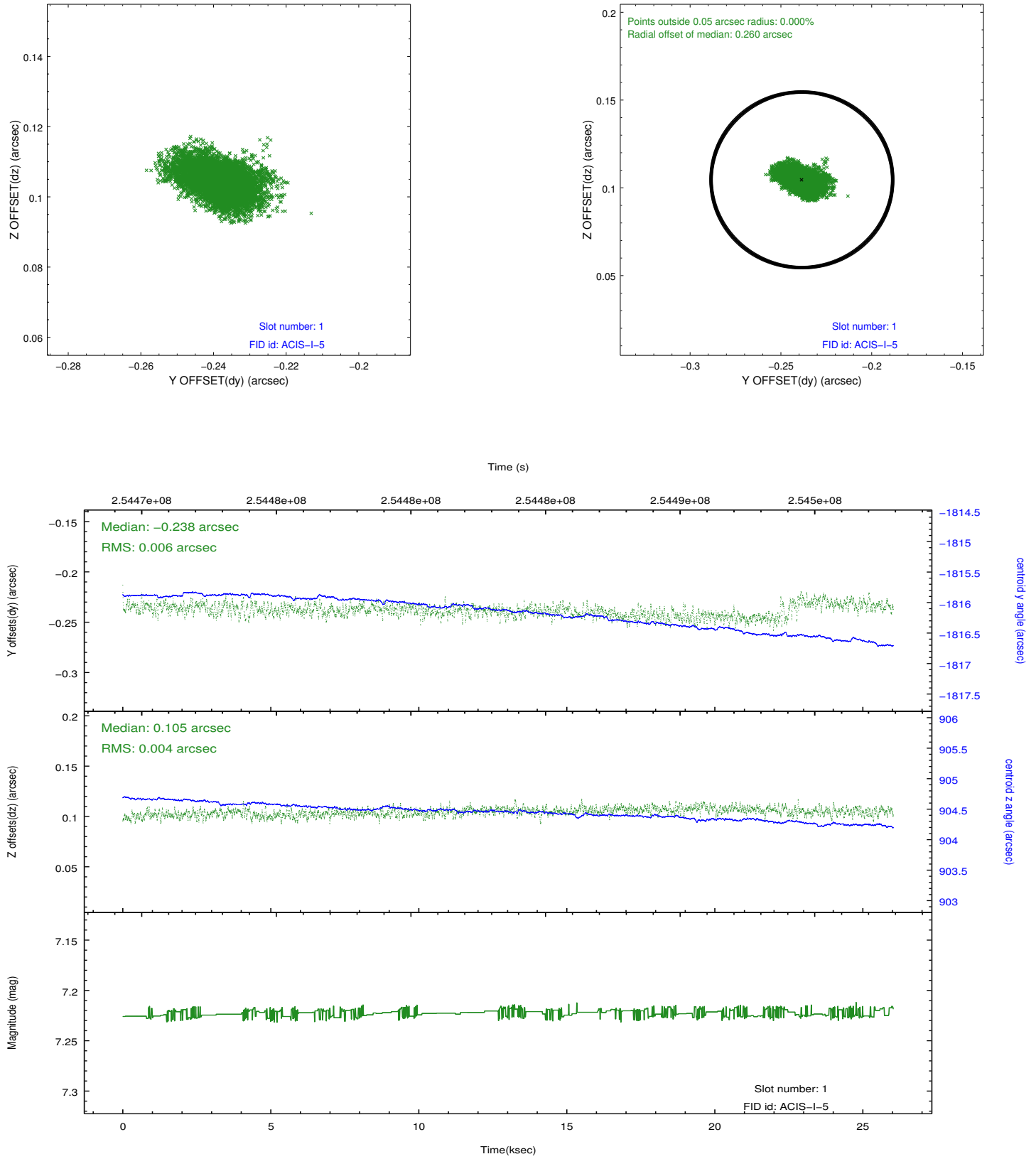


2.5 FID Slots

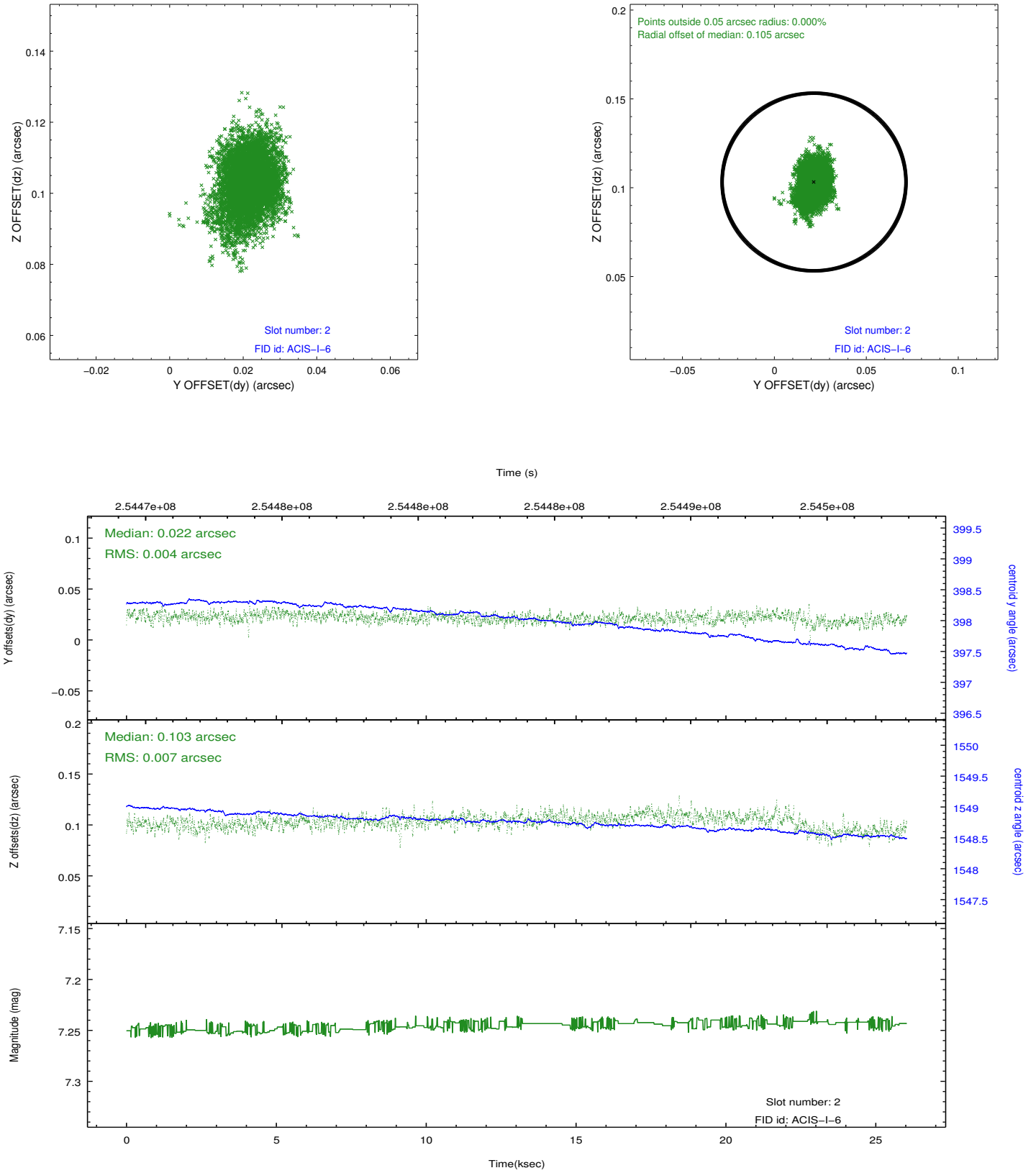
2.5.1 Slot 0



2.5.2 Slot 1



2.5.3 Slot 2



A Summary

A.1 Status

V&V Scientist	Jen Lauer
V&V Date (YYYY-MM-DD)	2012.03.26
V&V Edition	1
V&V Disposition and Status	OK
V&V Charge Time	26.0244589

A.2 Comments