

# V&V Reference Report

## L2 ASCDS Version : 7.6.7.1

Observation 5762 - L2 Version 002  
Chandra X-Ray Center

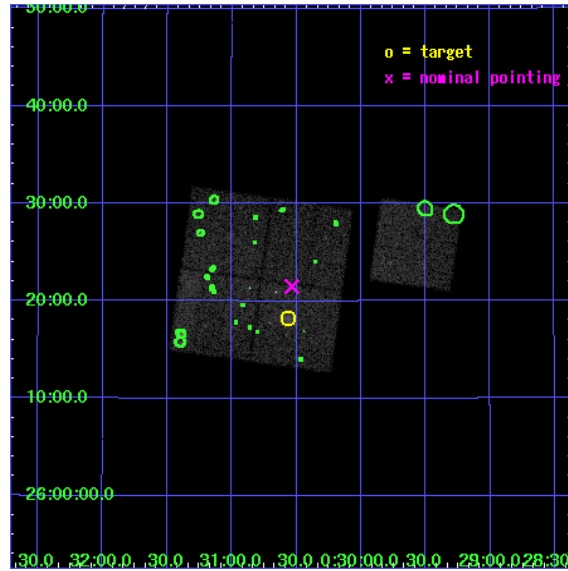
L2 Processing Date : Mar 8 2006

## Contents

<b>1</b>	<b>Front</b>	<b>2</b>
<b>2</b>	<b>OBI</b>	<b>3</b>
2.1	OBI . . . . .	3
2.1.1	Images . . . . .	3
2.1.2	Bias . . . . .	3
2.1.3	Parameters . . . . .	4
2.1.4	Events . . . . .	4
2.2	Compared Parameters . . . . .	5
2.3	Aspect . . . . .	6
2.4	Star Slots . . . . .	9
2.4.1	Slot 3 . . . . .	9
2.4.2	Slot 4 . . . . .	10
2.4.3	Slot 5 . . . . .	11
2.4.4	Slot 6 . . . . .	12
2.4.5	Slot 7 . . . . .	13
2.5	FID Slots . . . . .	14
2.5.1	Slot 0 . . . . .	14
2.5.2	Slot 1 . . . . .	15
2.5.3	Slot 2 . . . . .	16
<b>3</b>	<b>Point Sources</b>	<b>17</b>
<b>A</b>	<b>Summary</b>	<b>18</b>
A.1	Status . . . . .	18
A.2	Comments . . . . .	18

# 1 Front

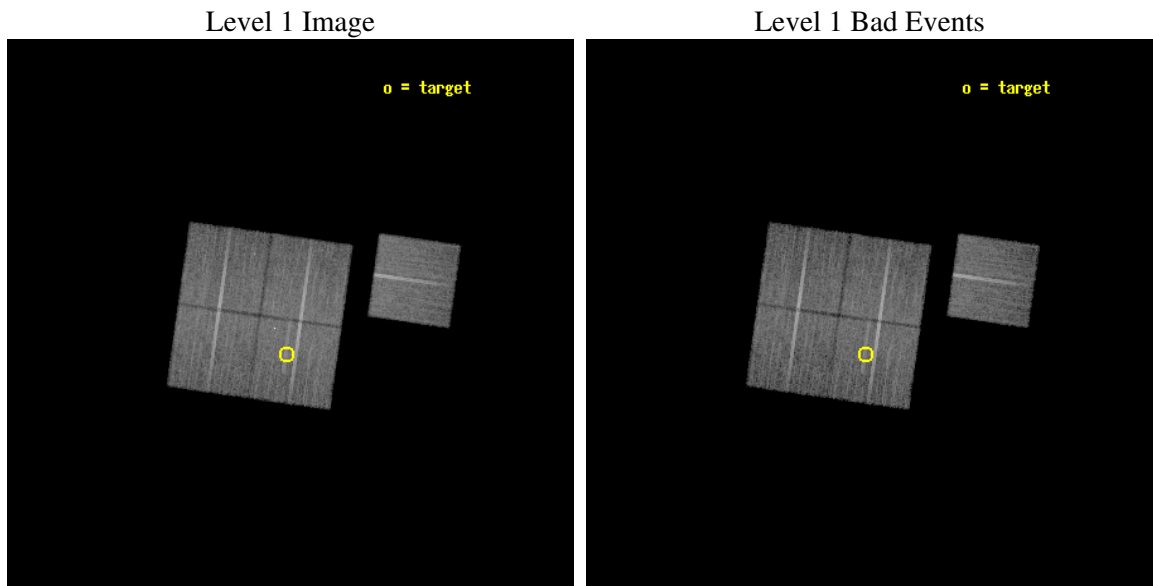
seq_num	800475
obs_id	5762
title	DARK ENERGY WITH X-RAY CLUSTERS: CHANDRA OBSERVATIONS OF 41 HIGH-REDSHIFT CLUSTERS FROM THE 400 deg^2 ROSAT PSPC SURVEY
observer	Dr Alexey Vikhlinin
object	cl0030+2618
dtcycle	0
cycle	P
ra_targ	7.64
dec_targ	26.304444
ra_nom	7.6337062355549
dec_nom	26.358455483038
roll_nom	98.057736107598
revision	2
ontime	18125.699965149
livetime	17888.874351158
ontime0	18122.559004903
ontime1	18125.699965149
ontime2	18122.559004903
ontime3	18125.699965149
ontime6	18119.418024659
l2events	56323



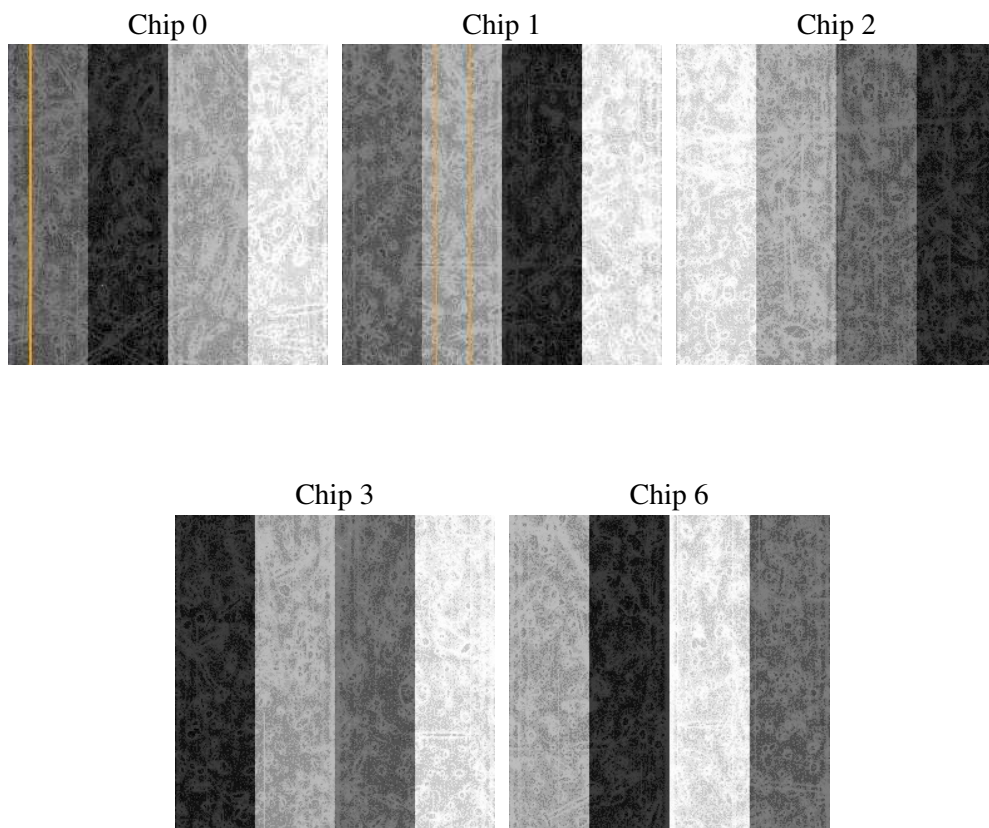
## 2 OBI

### 2.1 OBI

#### 2.1.1 Images



#### 2.1.2 Bias



### 2.1.3 Parameters

obi_num	0
ascdsver	7.6.7.1
caldbver	3.2.1
date	2006-03-08T10:52:02
revision	2

sched_exp_time	18000.000000
ontime	18692.114612401
ontime0	18688.973622203
ontime1	18692.114612401
ontime2	18688.973622203
ontime3	18692.114612401
ontime6	18685.832671911
l1events	591921

### 2.1.4 Events

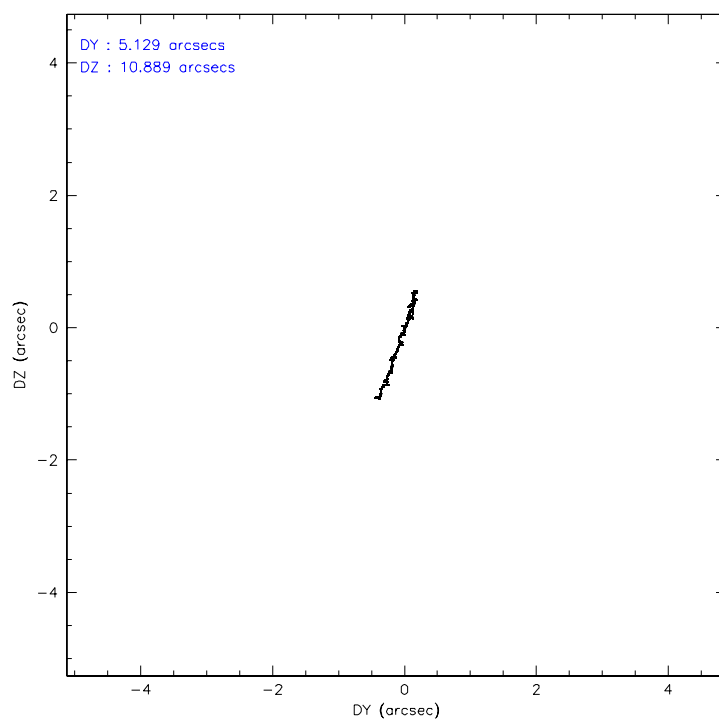
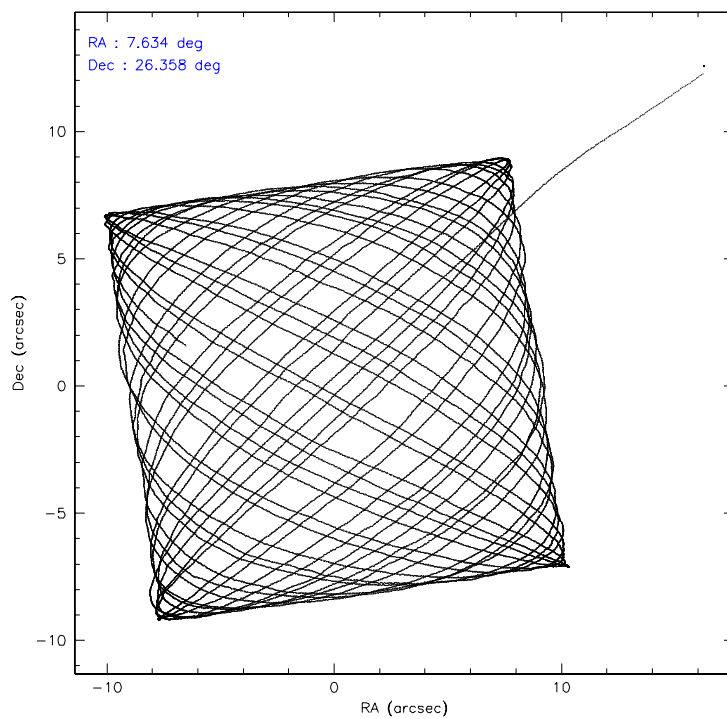
	ccd 0	ccd 1	ccd 2	ccd 3	ccd 6
level 1 events	111079	114316	121566	124720	120240
rejected events	98386	99745	109460	110788	107176
rejected %	88%	87%	90%	88%	89%

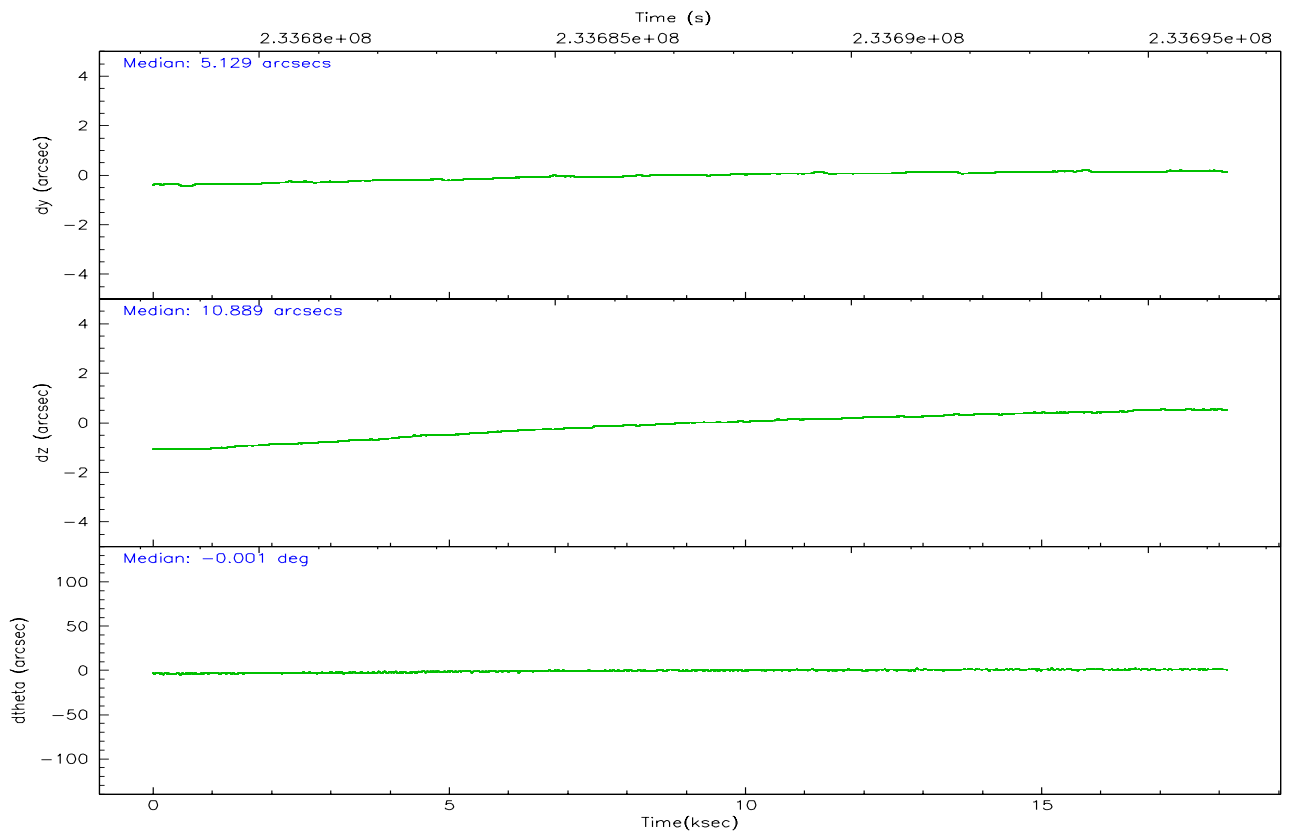
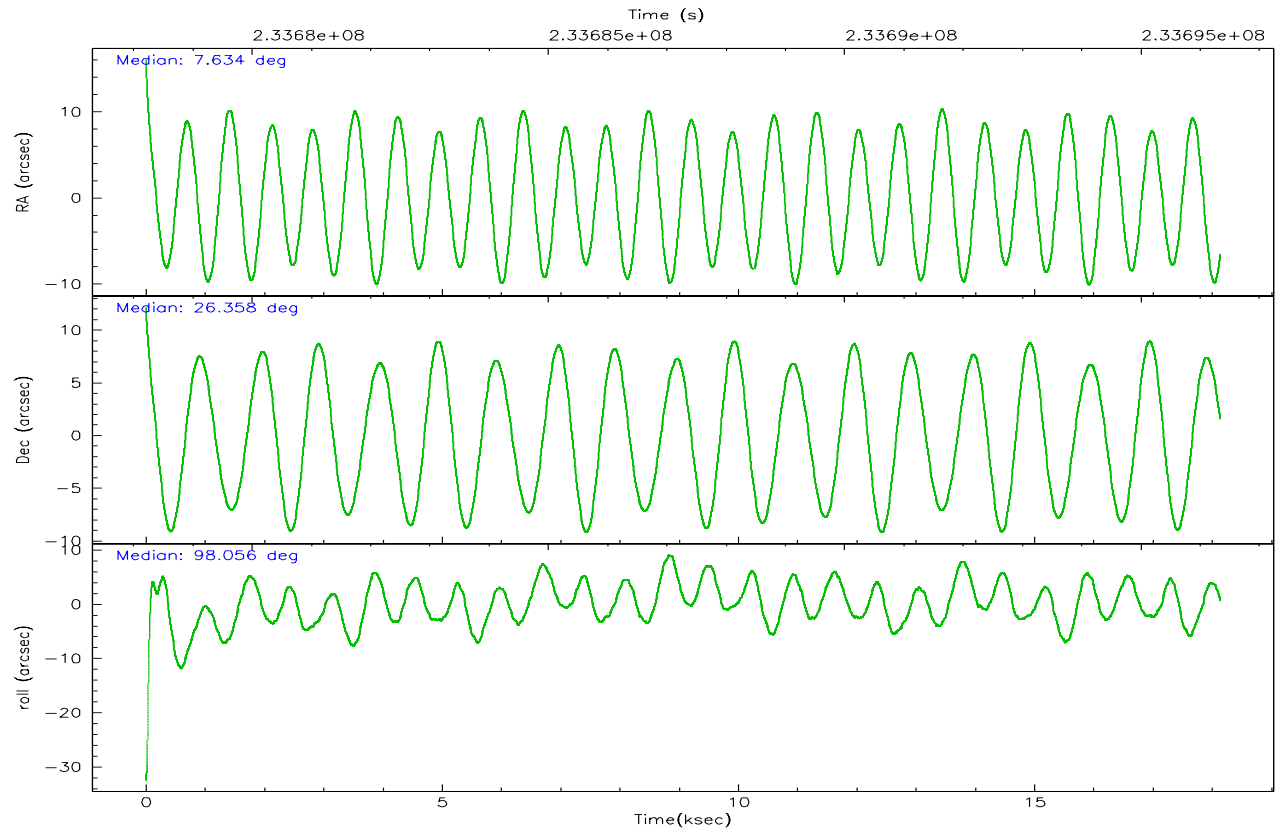
	ccd 0	ccd 1	ccd 2	ccd 3	ccd 6
grade 0 events	5154	5962	4833	6559	5202
	4%	5%	3%	5%	4%
grade 1 events	56	75	50	77	66
	0%	0%	0%	0%	0%
grade 2 events	2943	3194	2808	2669	2812
	2%	2%	2%	2%	2%
grade 3 events	1426	1500	1335	1418	1420
	1%	1%	1%	1%	1%
grade 4 events	1352	1468	1326	1306	1432
	1%	1%	1%	1%	1%
grade 5 events	4258	4552	3882	4920	4846
	3%	3%	3%	3%	4%
grade 6 events	2207	2861	2144	2357	2619
	1%	2%	1%	1%	2%
grade 7 events	93683	94704	105188	105414	101843
	84%	82%	86%	84%	84%

## 2.2 Compared Parameters

Parameter	Planned	Actual	Parameter	Planned	Actual
Instrument	ACIS	ACIS	Obspar format version number	6	6
Detector	ACIS-01236	ACIS-01236	Obspar file type	PREDICTED	ACTUAL
Grating	NONE	NONE	Obspar update status	NONE	UPDATED
Data mode	VFAINT	VFAINT	On-chip summing requested	N	N
Observation mode	POINTING	POINTING	Subarray requested	NONE	NONE
Pointing RA	7.652646	7.63370623555485	Alternating exposures requested	N	N
Pointing Dec	26.336957	26.35845548303777	Primary exposure time	0.000000	3.1
Pointing Roll	97.840669	98.05773610759806			
SIM focus pos (mm)	-0.782348	-0.7809083437167272			
SIM defocus (mm)	0	0.001439871863259334			
SIM translation stage pos (mm)	-225.840463	-225.8433433320239			
SIM translation stage offset (mm)	-7.752	-7.749109670905796			
Observation start time	233678341.184000	233677093.20271			
Observation start date	2005-05-28T14:37:57	2005-05-28T14:18:13			
Observation end time	233696341.184000	233697324.65363			
Observation end date	2005-05-28T19:37:57	2005-05-28T19:55:24			
Read mode	TIMED	TIMED			

## 2.3 Aspect





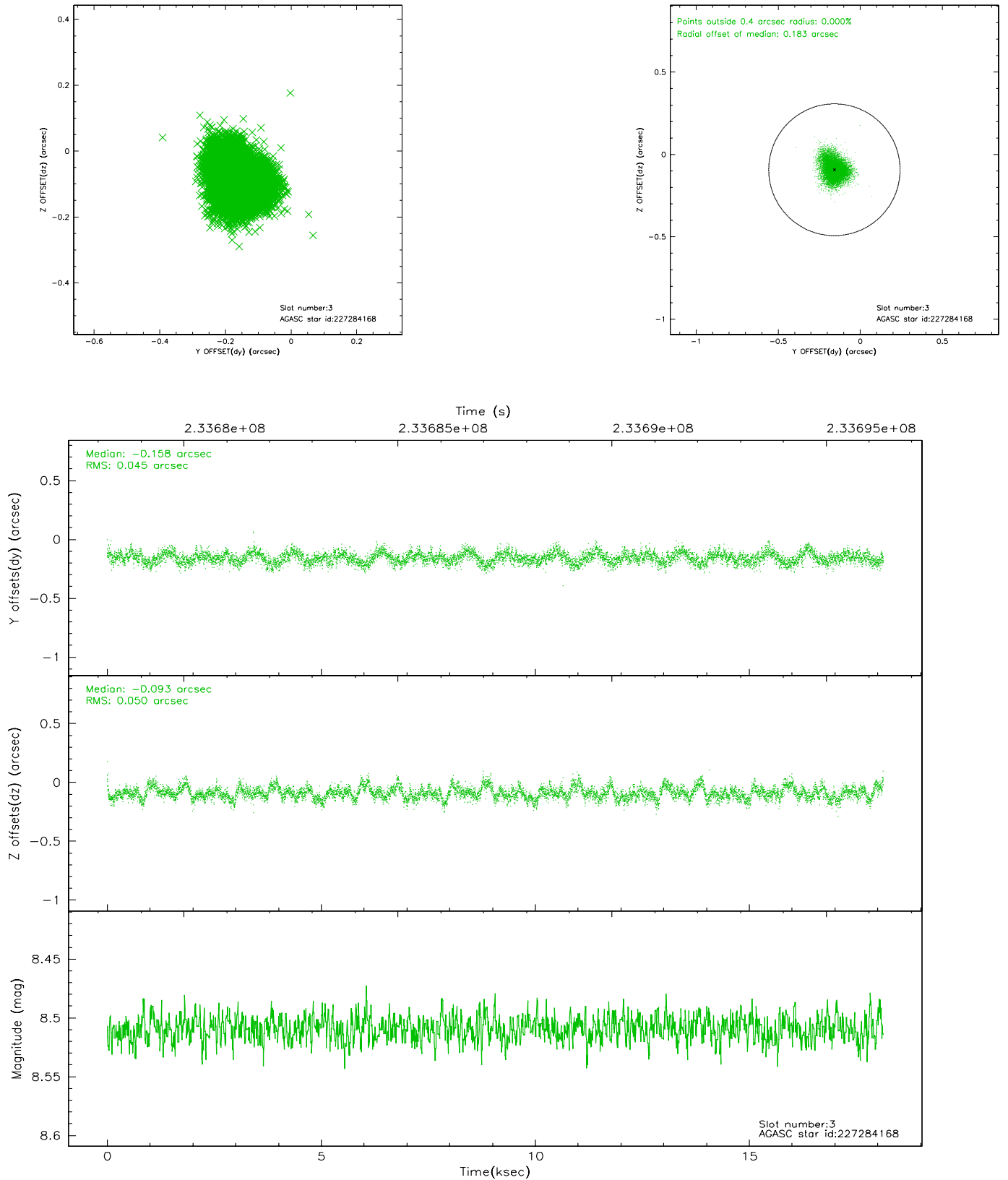
### Slot Statistics

slot	status	id	mag	n_pts	med_dy	med_dz	dr1	dr2	ra	dec	mean_y	mean_z
0	FID	ACIS-I-1	7.23	4423	0.111	-0.088	0.017	0.042	0.000000	0.000000	934.59	-993.44
1	FID	ACIS-I-5	7.22	4423	-0.242	0.097	0.016	0.030	0.000000	0.000000	-1813.71	904.13
2	FID	ACIS-I-6	7.25	4423	0.041	0.063	0.018	0.030	0.000000	0.000000	399.88	1548.82
3	GUIDE	227284168	8.51	8839	-0.158	-0.093	0.071	0.117	7.338725	26.871683	2045.57	735.95
4	GUIDE	227286408	8.55	8847	-0.016	0.021	0.067	0.111	7.352499	26.495316	697.97	880.27
5	GUIDE	227287208	9.29	8840	-0.045	0.197	0.099	0.163	7.827867	26.478041	426.49	-628.40
6	GUIDE	227288248	8.91	8841	-0.012	-0.052	0.079	0.126	7.112560	26.515036	875.98	1635.67
7	GUIDE	227285648	10.01	8837	0.230	-0.065	0.158	0.242	7.584220	25.909782	-1492.88	429.44

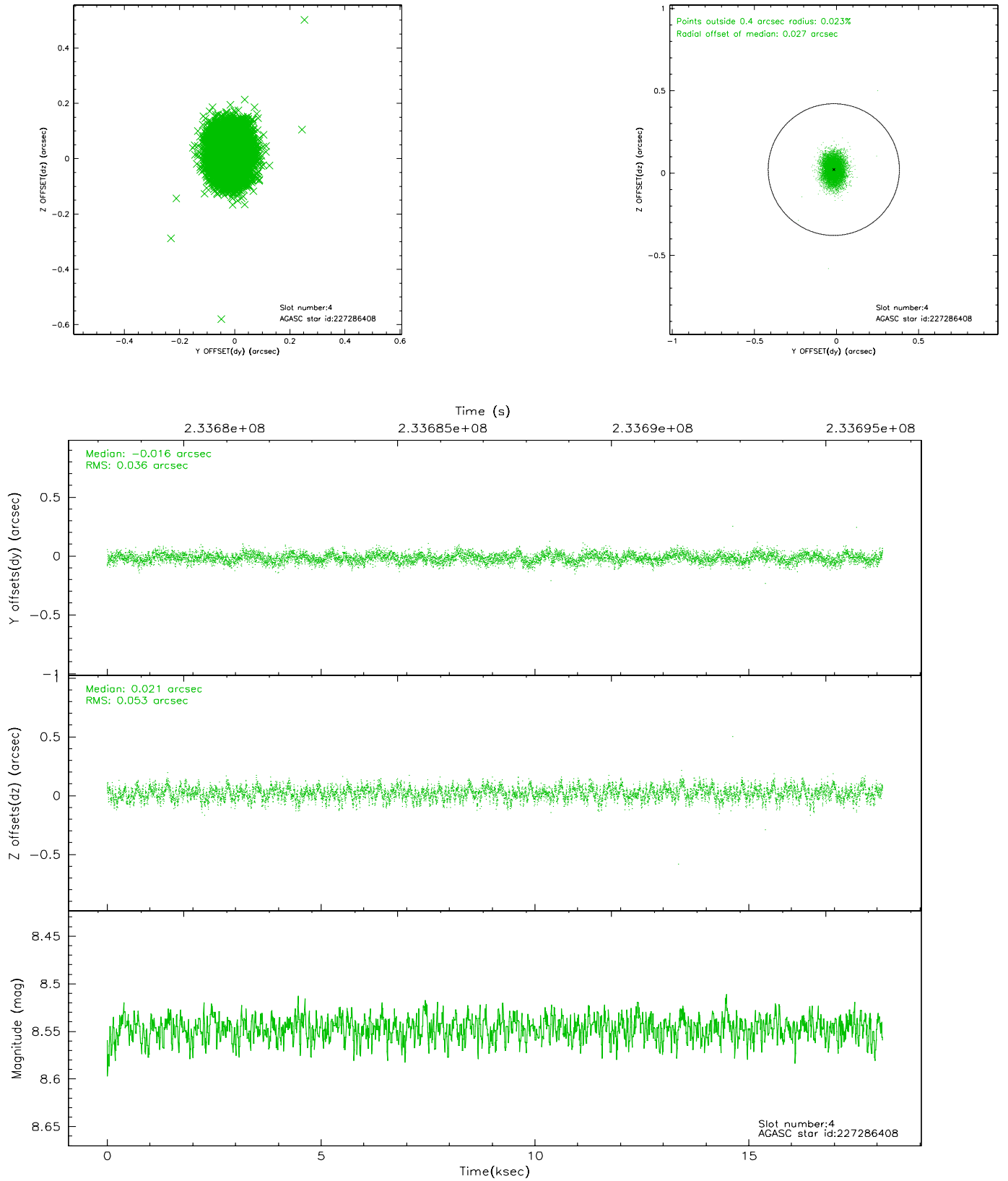


## 2.4 Star Slots

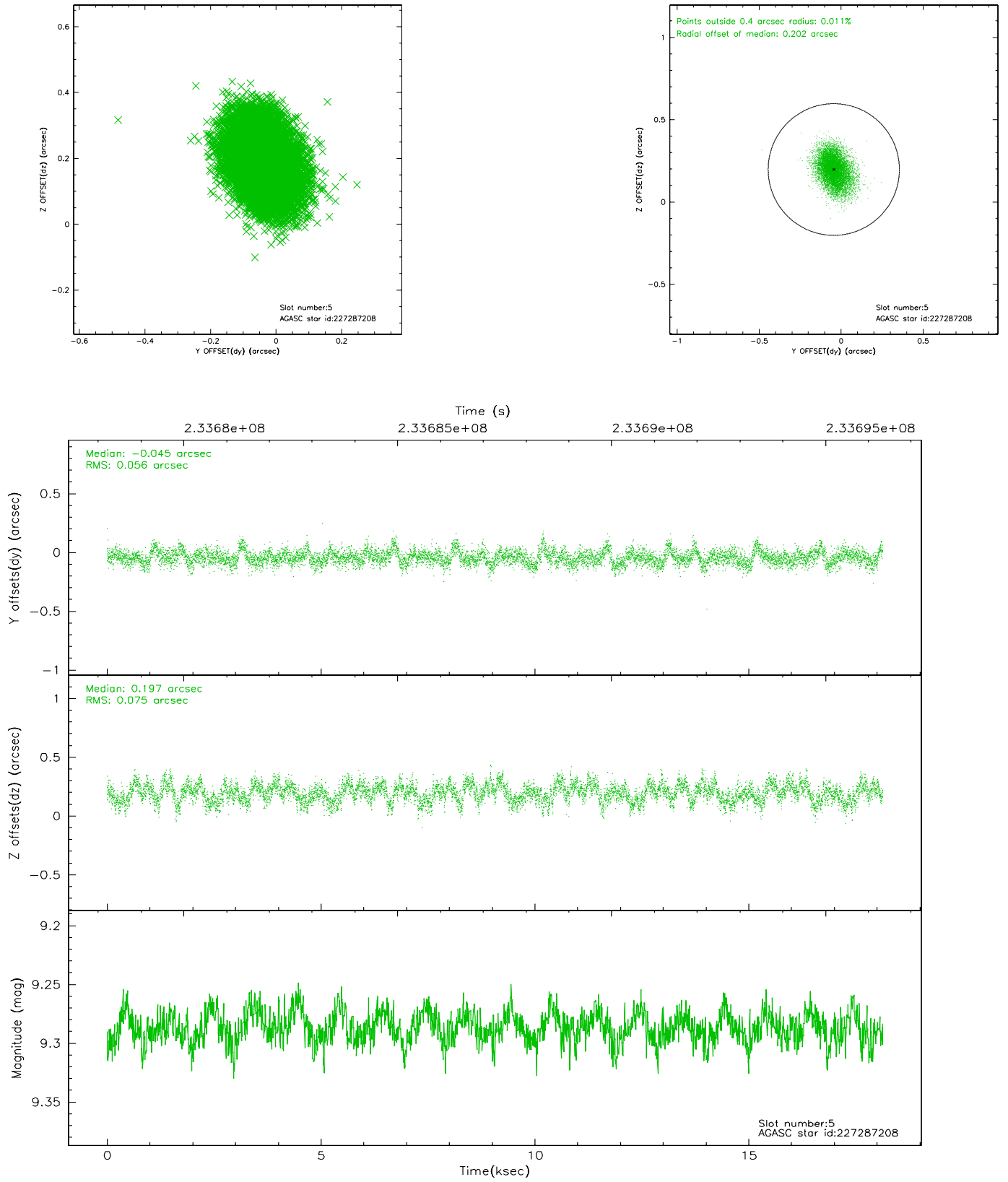
### 2.4.1 Slot 3



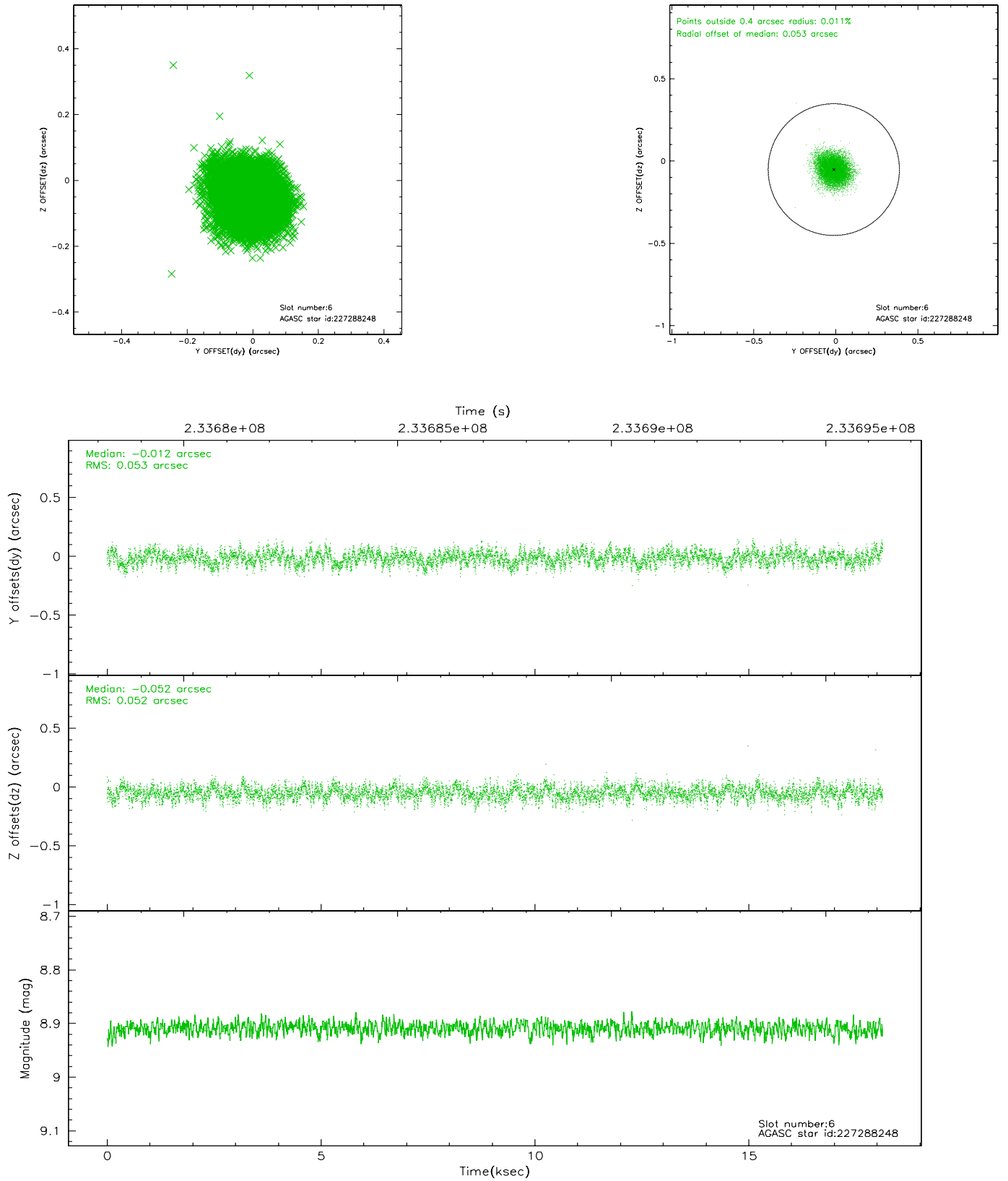
## 2.4.2 Slot 4



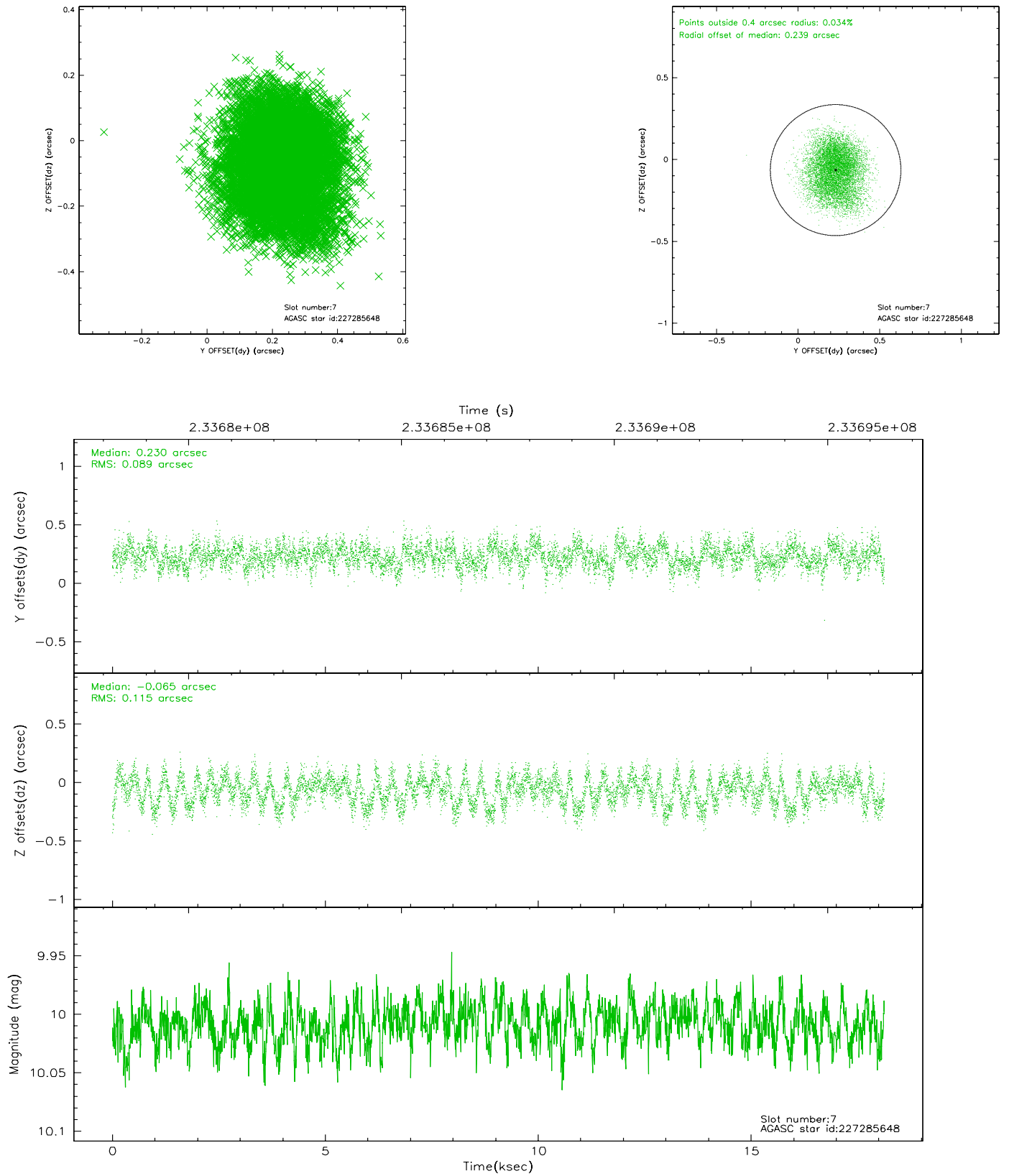
### 2.4.3 Slot 5



## 2.4.4 Slot 6

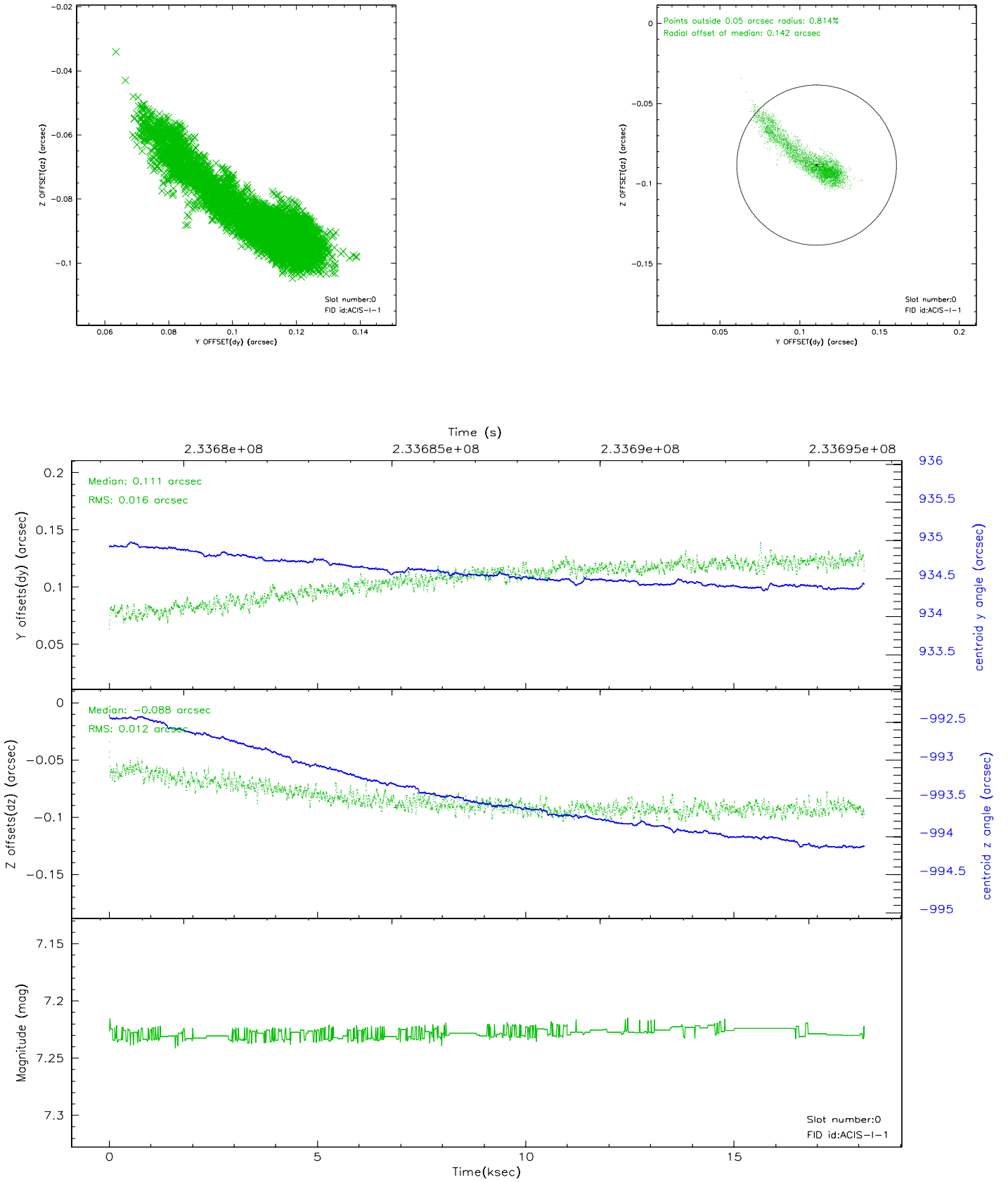


## 2.4.5 Slot 7

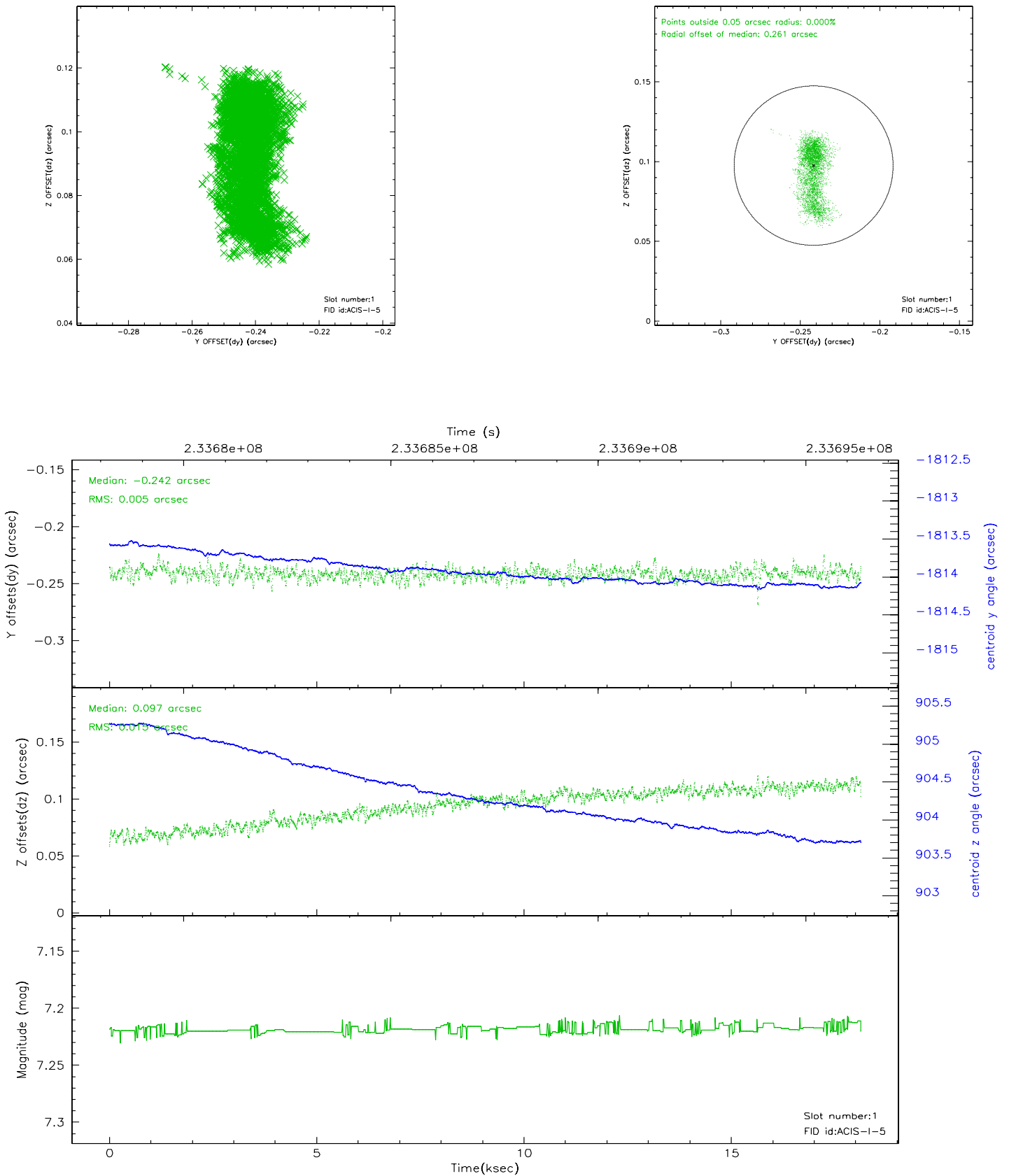


## 2.5 FID Slots

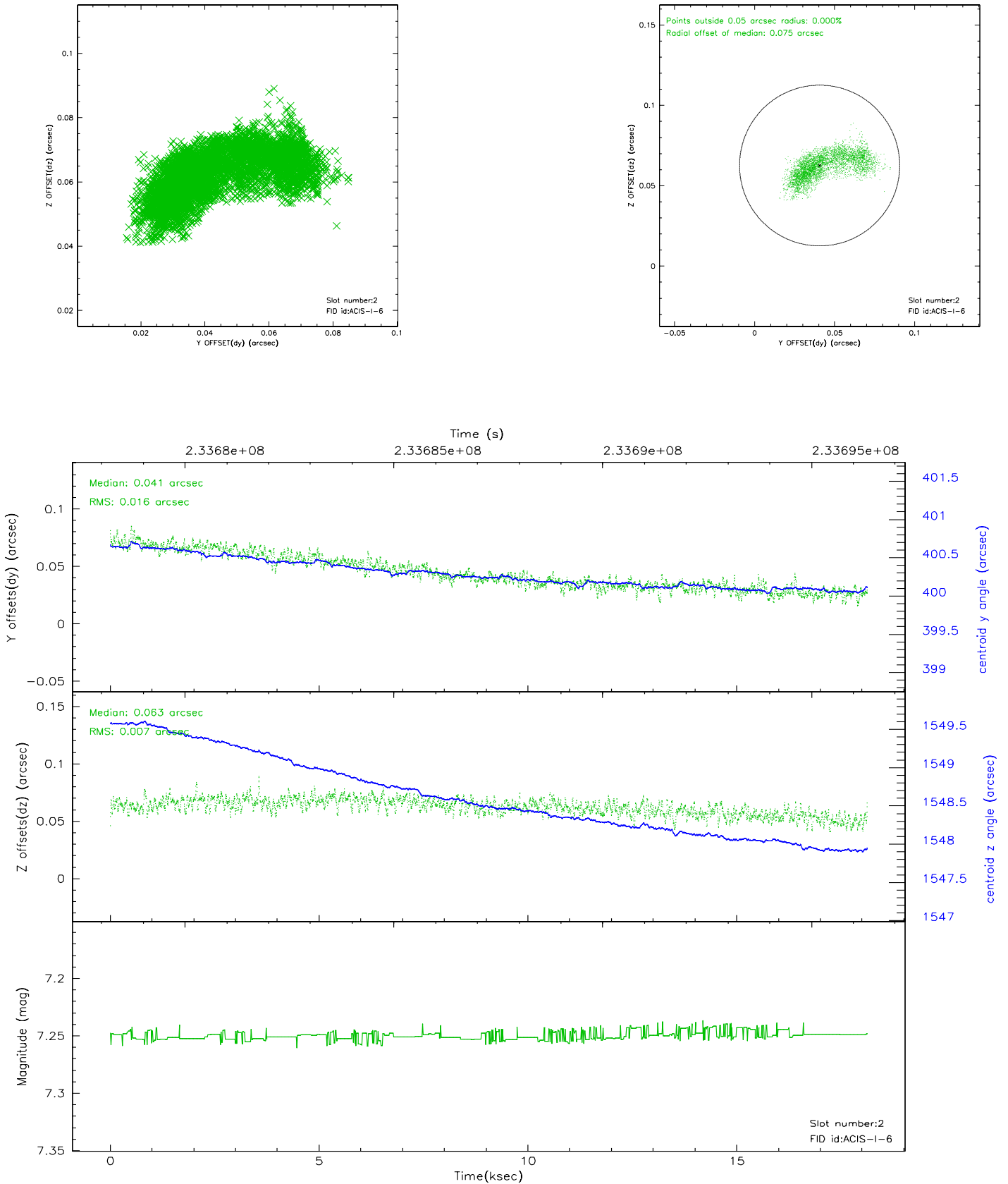
### 2.5.1 Slot 0



## 2.5.2 Slot 1

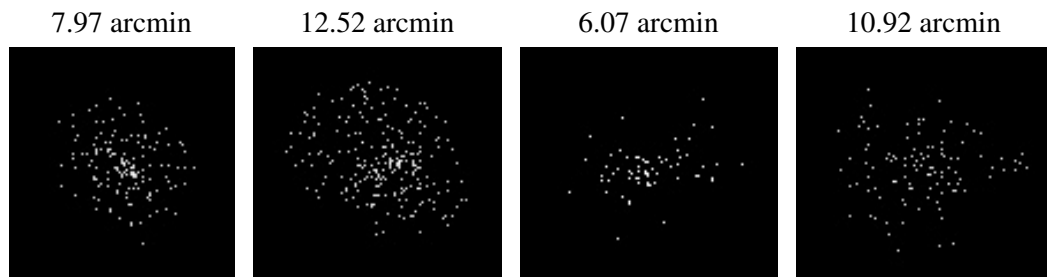


### 2.5.3 Slot 2





### 3 Point Sources



## A Summary

### A.1 Status

V&V Scientist	Jen Lauer
V&V Date (YYYY-MM-DD)	2006.03.08
V&V Edition	1
V&V Disposition and Status	OK
V&V Charge Time	18.12569

### A.2 Comments