

V&V Reference Report

L2 ASCDS Version : 7.6.7.1

Observation 5754 - L2 Version 001
Chandra X-Ray Center

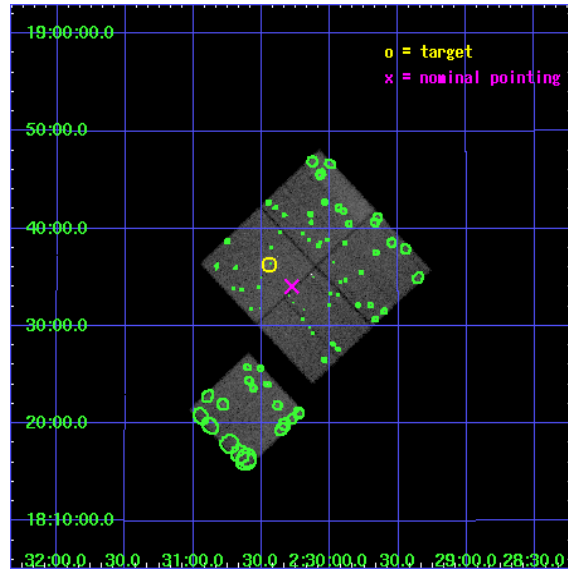
L2 Processing Date : Apr 12 2006

Contents

1	Front	2
2	OBI	3
2.1	OBI	3
2.1.1	Images	3
2.1.2	Bias	3
2.1.3	Parameters	4
2.1.4	Events	4
2.2	Compared Parameters	5
2.3	Aspect	6
2.4	Star Slots	9
2.4.1	Slot 3	9
2.4.2	Slot 4	10
2.4.3	Slot 5	11
2.4.4	Slot 6	12
2.4.5	Slot 7	13
2.5	FID Slots	14
2.5.1	Slot 0	14
2.5.2	Slot 1	15
2.5.3	Slot 2	16
3	Point Sources	17
A	Summary	18
A.1	Status	18
A.2	Comments	18

1 Front

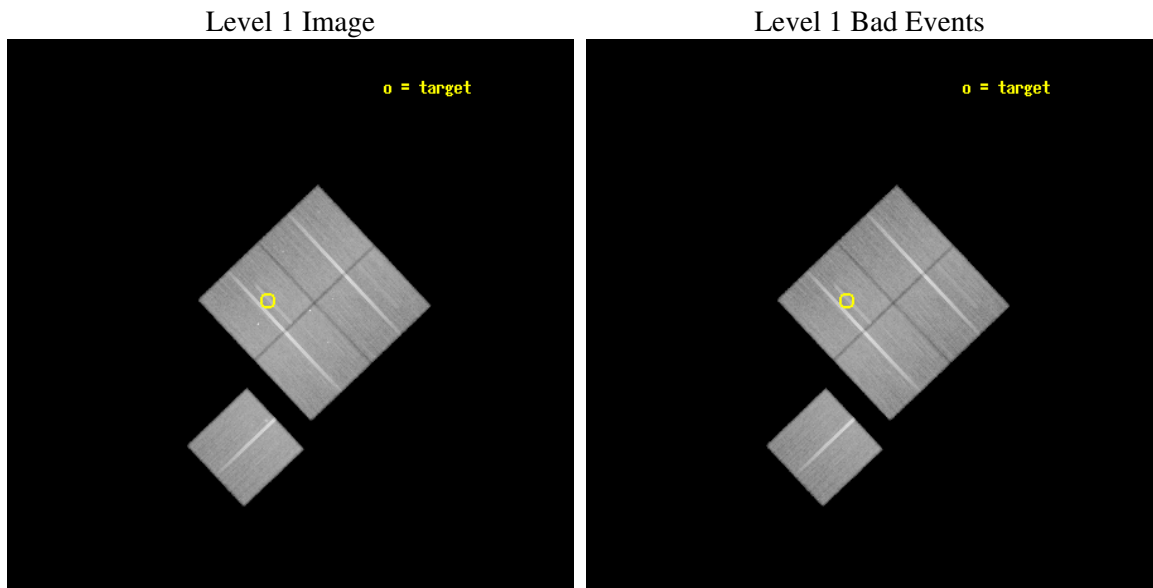
seq_num	800467
obs_id	5754
title	DARK ENERGY WITH X-RAY CLUSTERS: CHANDRA OBSERVATIONS OF 41 HIGH-REDSHIFT CLUSTERS FROM THE 400 deg^2 ROSAT PSPC SURVEY
observer	Dr Alexey Vikhlinin
object	cl0230+1836
dtcycle	0
cycle	P
ra_targ	37.610833
dec_targ	18.606111
ra_nom	37.569950679601
dec_nom	18.568071384534
roll_nom	226.57728695706
revision	2
ontime	68668.017867625
livetime	67770.819661525
ontime0	68649.171976298
ontime1	68668.017887533
ontime2	68668.017887533
ontime3	68668.017867625
ontime6	68664.876887411
l2events	191359



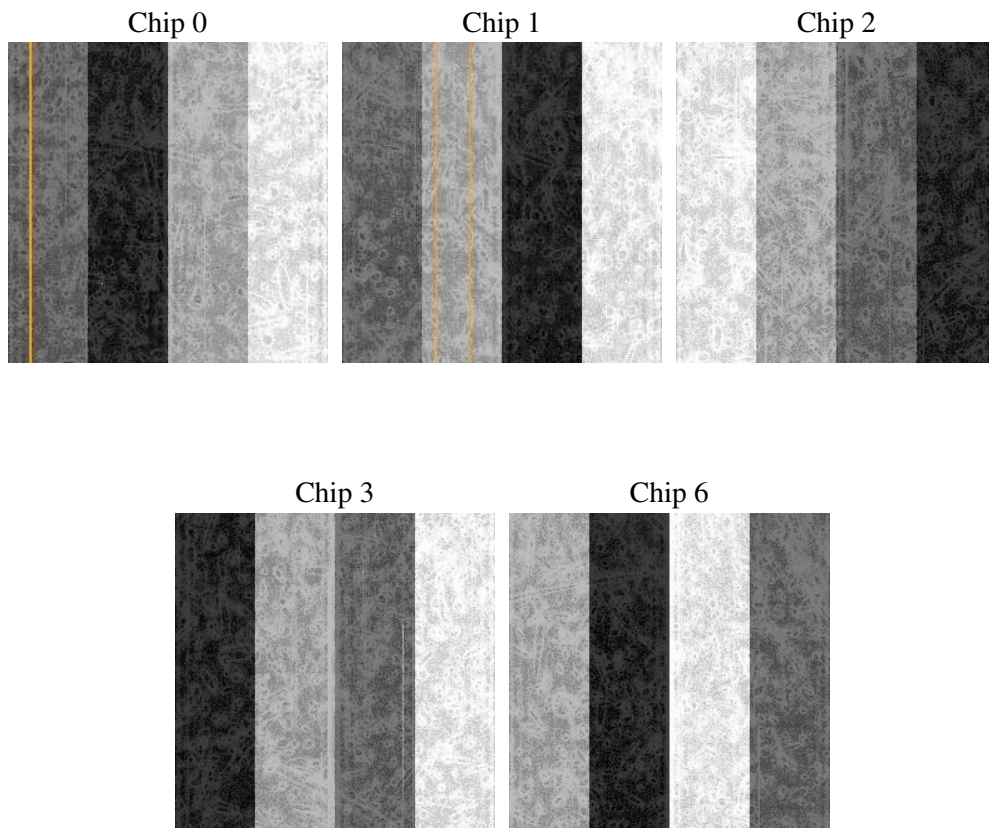
2 OBI

2.1 OBI

2.1.1 Images



2.1.2 Bias



2.1.3 Parameters

obi_num	0
ascdsver	7.6.7.1
caldsver	3.2.1
date	2006-04-12T06:37:50
revision	2

sched_exp_time	68500.000000
ontime	69155.599370599
ontime0	69136.75349915
ontime1	69155.599390507
ontime2	69155.599410385
ontime3	69155.599370599
ontime6	69152.458410263
l1events	2280215

2.1.4 Events

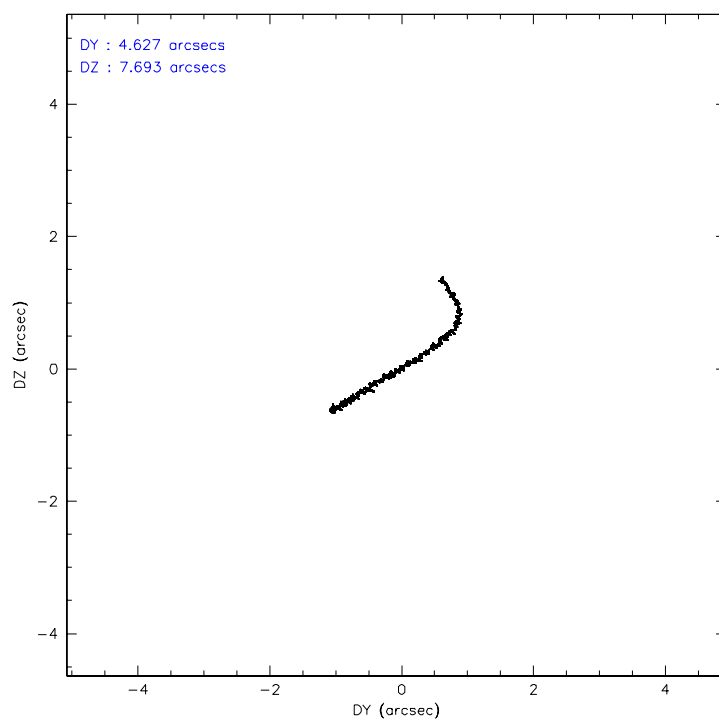
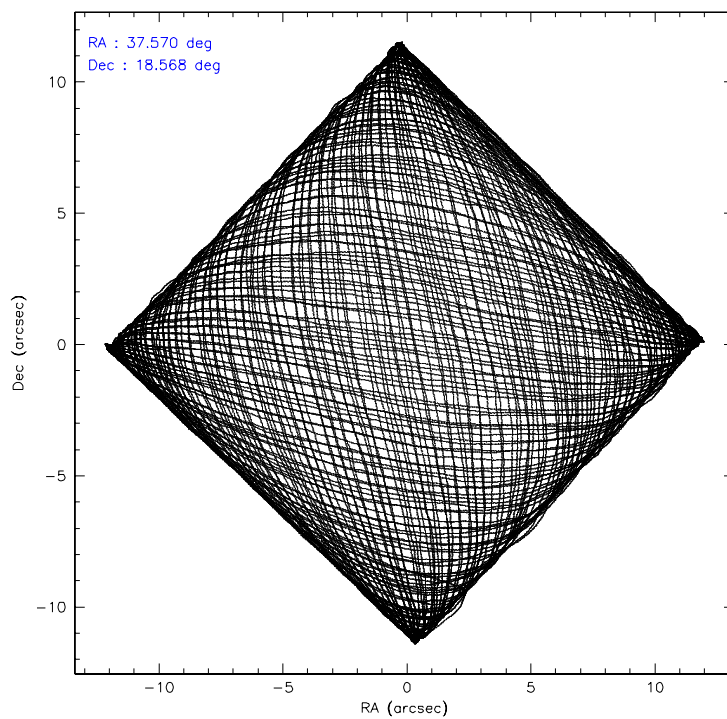
	ccd 0	ccd 1	ccd 2	ccd 3	ccd 6
level 1 events	431876	431302	485260	469960	461817
rejected events	387538	380713	440461	426144	415610
rejected %	89%	88%	90%	90%	89%

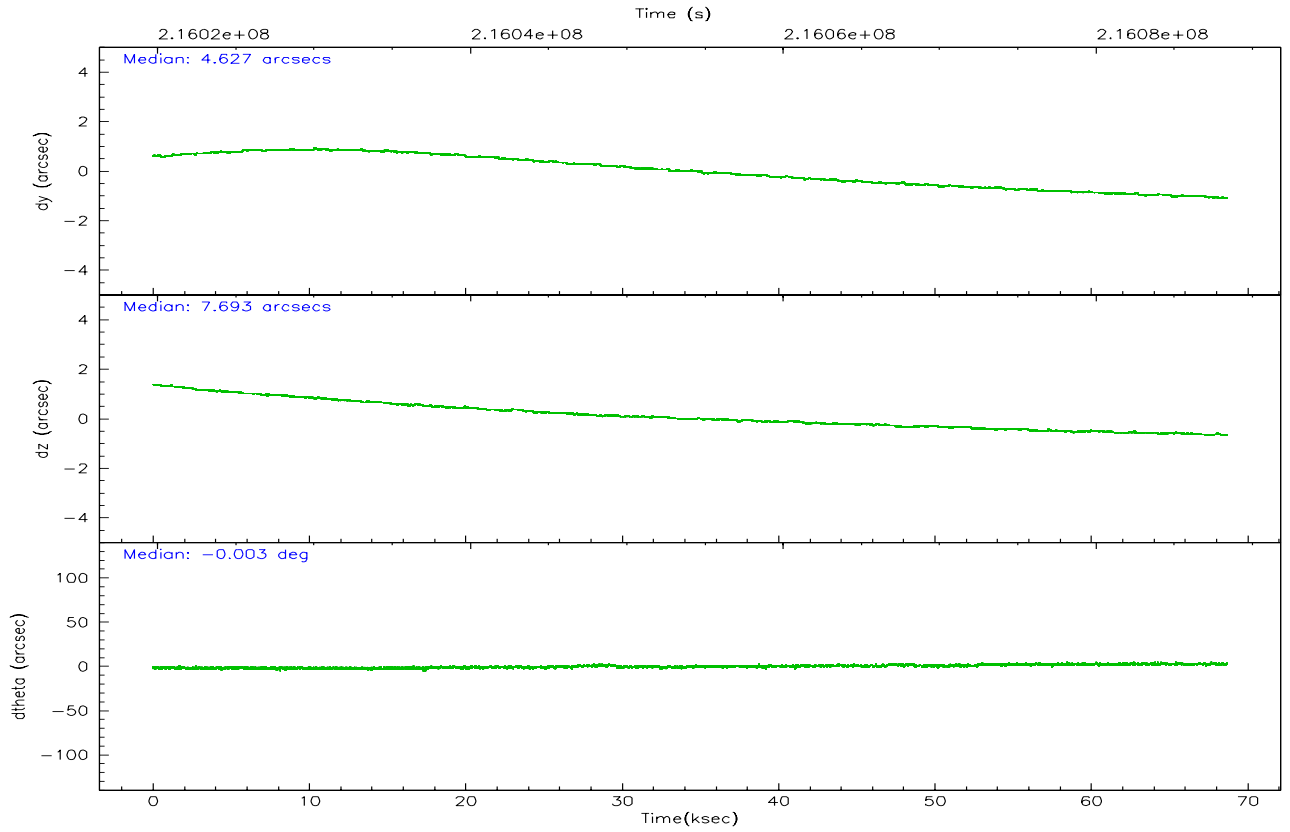
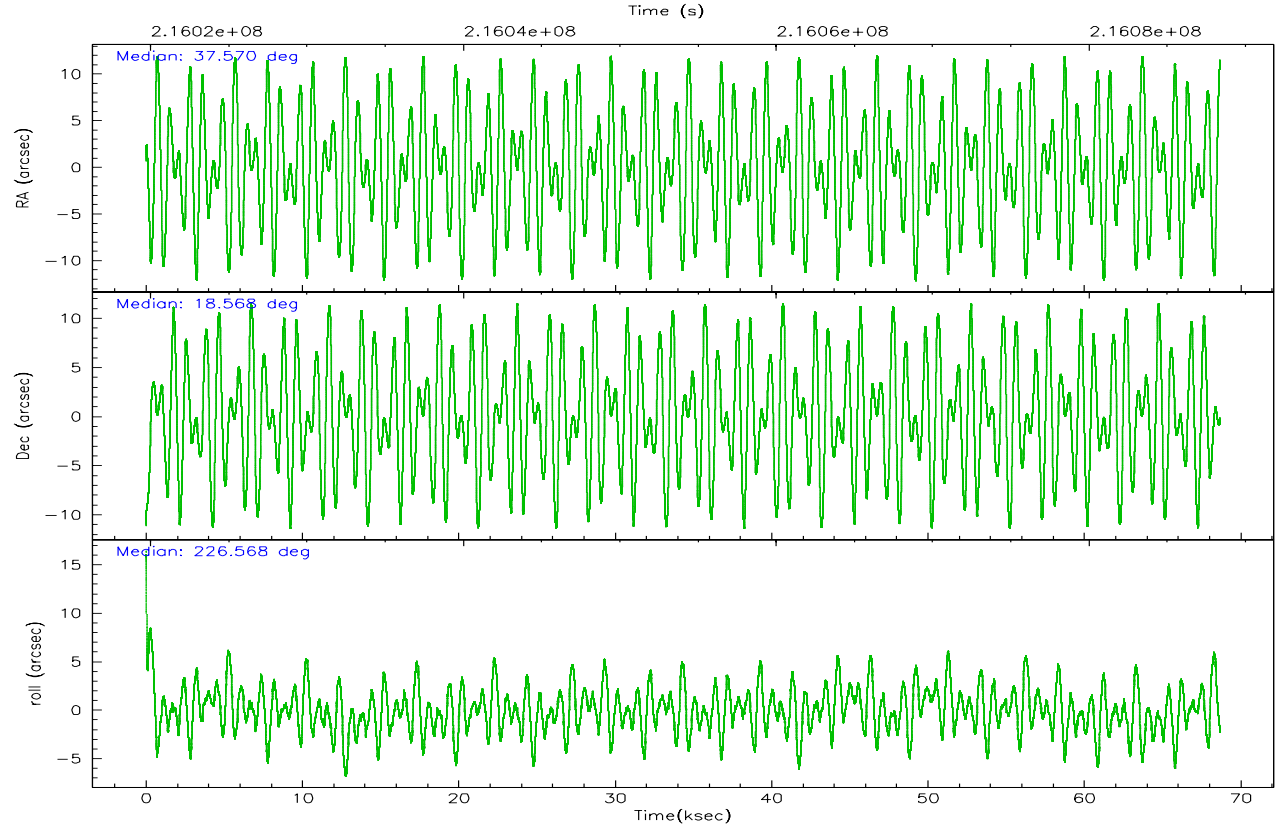
	ccd 0	ccd 1	ccd 2	ccd 3	ccd 6
grade 0 events	15222	18523	16817	16441	16645
	3%	4%	3%	3%	3%
grade 1 events	211	209	239	217	200
	0%	0%	0%	0%	0%
grade 2 events	10443	10934	10410	9335	9952
	2%	2%	2%	1%	2%
grade 3 events	5312	5670	4845	5089	5265
	1%	1%	0%	1%	1%
grade 4 events	5004	5591	4938	4847	5060
	1%	1%	1%	1%	1%
grade 5 events	15863	16894	14815	17586	17699
	3%	3%	3%	3%	3%
grade 6 events	8661	10197	8073	8413	9646
	2%	2%	1%	1%	2%
grade 7 events	371160	363284	425123	408032	397350
	85%	84%	87%	86%	86%

2.2 Compared Parameters

Parameter	Planned	Actual	Parameter	Planned	Actual
Instrument	ACIS	ACIS	Obspar format version number	6	6
Detector	ACIS-01236	ACIS-01236	Obspar file type	PREDICTED	ACTUAL
Grating	NONE	NONE	Obspar update status	NONE	UPDATED
Data mode	VFAINT	VFAINT	On-chip summing requested	N	N
Observation mode	POINTING	POINTING	Subarray requested	NONE	NONE
Pointing RA	37.576536	37.56995067960131	Alternating exposures requested	N	N
Pointing Dec	18.594732	18.56807138453376	Primary exposure time	0.000000	3.1
Pointing Roll	226.366498	226.5772869570582			
SIM focus pos (mm)	-0.782348	-0.7809083437167272			
SIM defocus (mm)	0	0.001439871863259334			
SIM translation stage pos (mm)	-225.840463	-225.8433433320239			
SIM translation stage offset (mm)	-7.752	-7.749109670905796			
Observation start time	216019888.184000	216018655.82895			
Observation start date	2004-11-05T05:30:24	2004-11-05T05:10:55			
Observation end time	216088388.184000	216089228.61961			
Observation end date	2004-11-06T00:32:04	2004-11-06T00:47:08			
Read mode	TIMED	TIMED			

2.3 Aspect



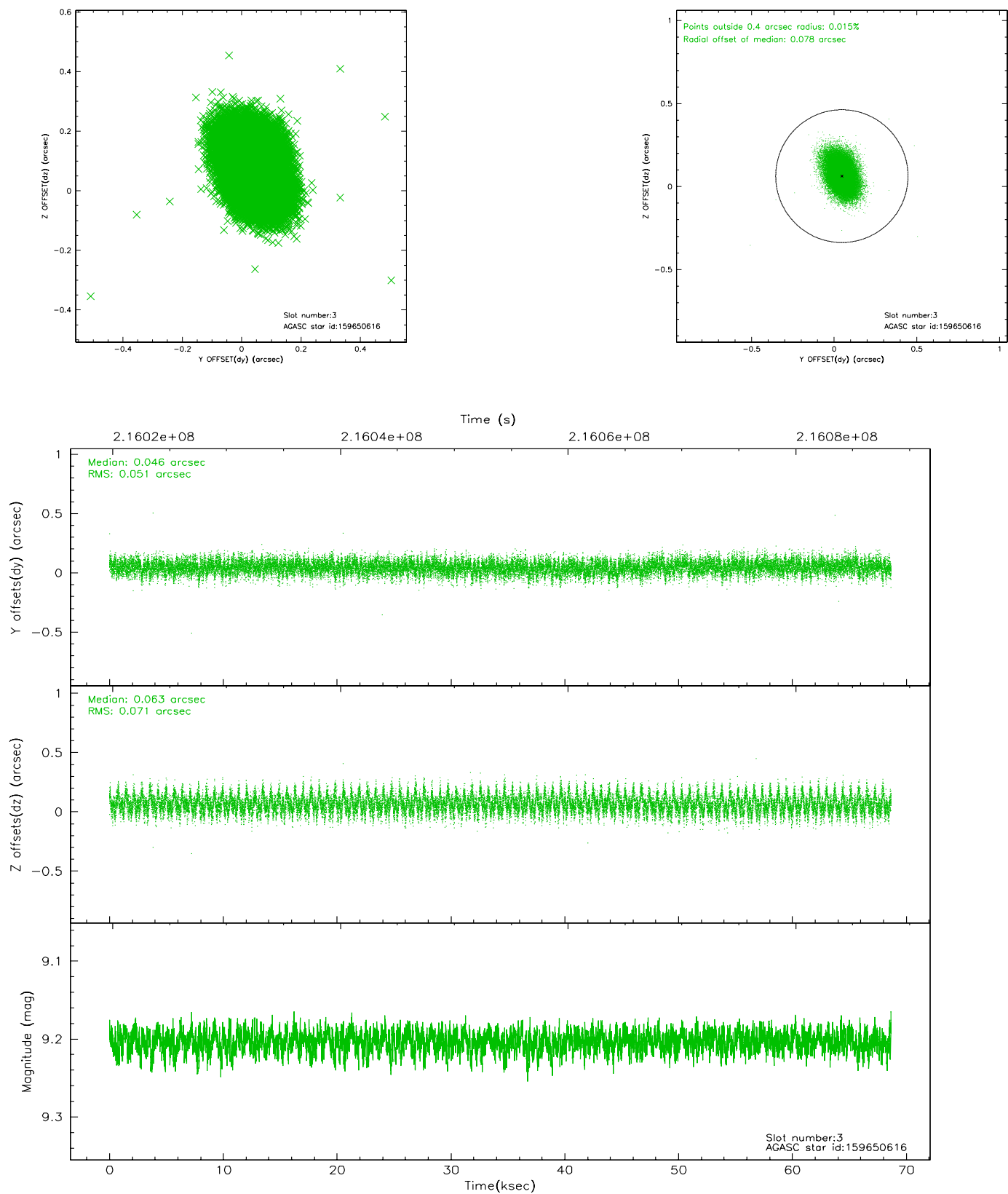


Slot Statistics

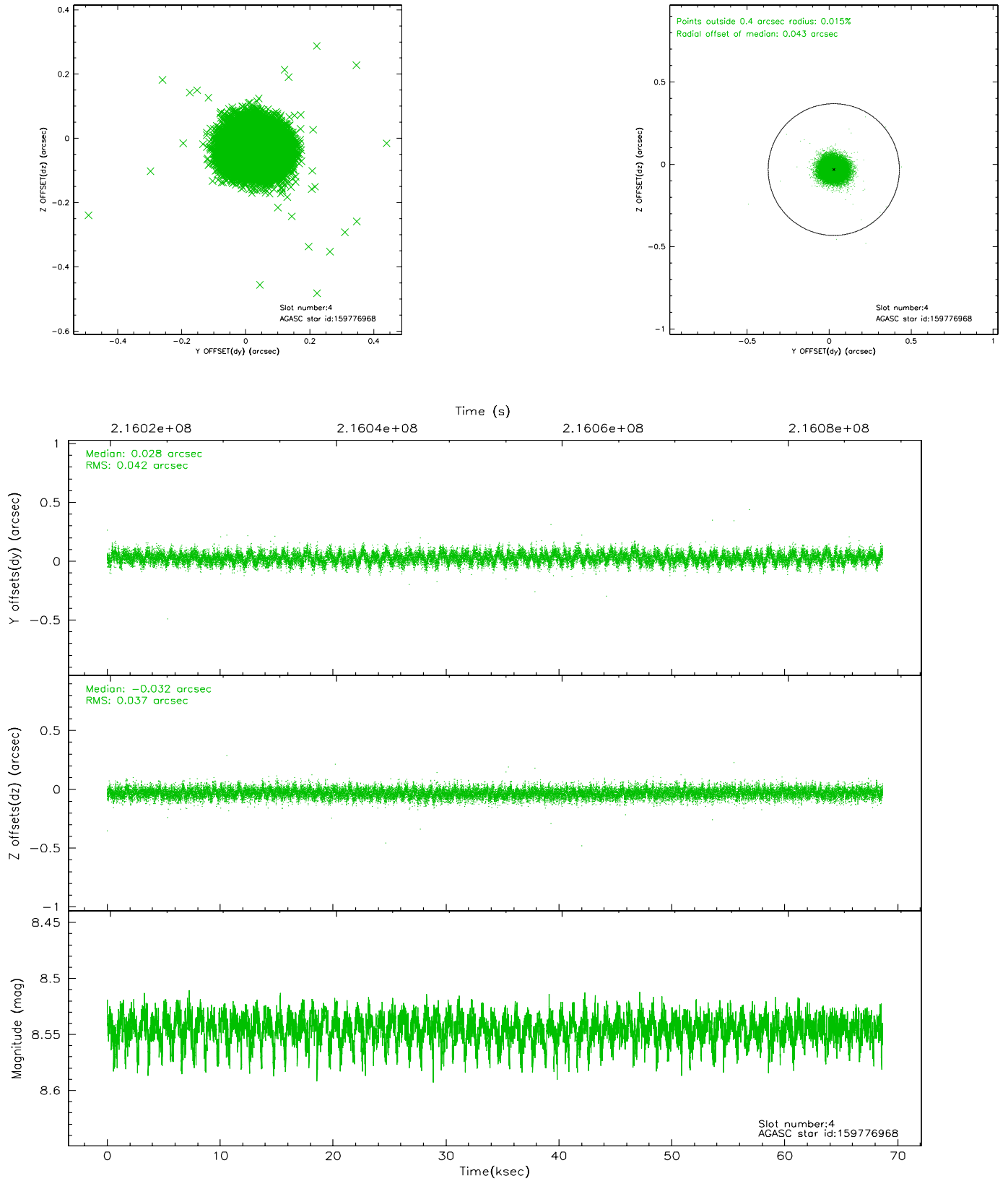
slot	status	id	mag	n_pts	med_dy	med_dz	dr1	dr2	ra	dec	mean_y	mean_z
0	FID	ACIS-I-2	7.17	16747	-0.052	-0.050	0.022	0.038	0.000000	0.000000	-759.64	-995.70
1	FID	ACIS-I-4	7.14	16752	0.048	0.051	0.025	0.036	0.000000	0.000000	2154.49	910.58
2	FID	ACIS-I-5	7.21	16751	-0.098	0.070	0.021	0.034	0.000000	0.000000	-1813.20	907.34
3	GUIDE	159650616	9.20	33472	0.046	0.063	0.092	0.155	37.179728	18.571566	994.13	-922.99
4	GUIDE	159776968	8.54	33490	0.028	-0.032	0.059	0.096	38.124868	18.912417	-2118.18	560.49
5	GUIDE	159779088	8.86	33488	-0.057	-0.158	0.072	0.116	37.891114	18.792953	-1256.88	282.90
6	GUIDE	159792160	9.31	33430	0.081	0.040	0.082	0.134	38.137586	18.477673	-1018.91	1675.52
7	GUIDE	159657288	9.68	33482	-0.098	0.084	0.119	0.196	36.947403	18.957788	529.94	-2454.22

2.4 Star Slots

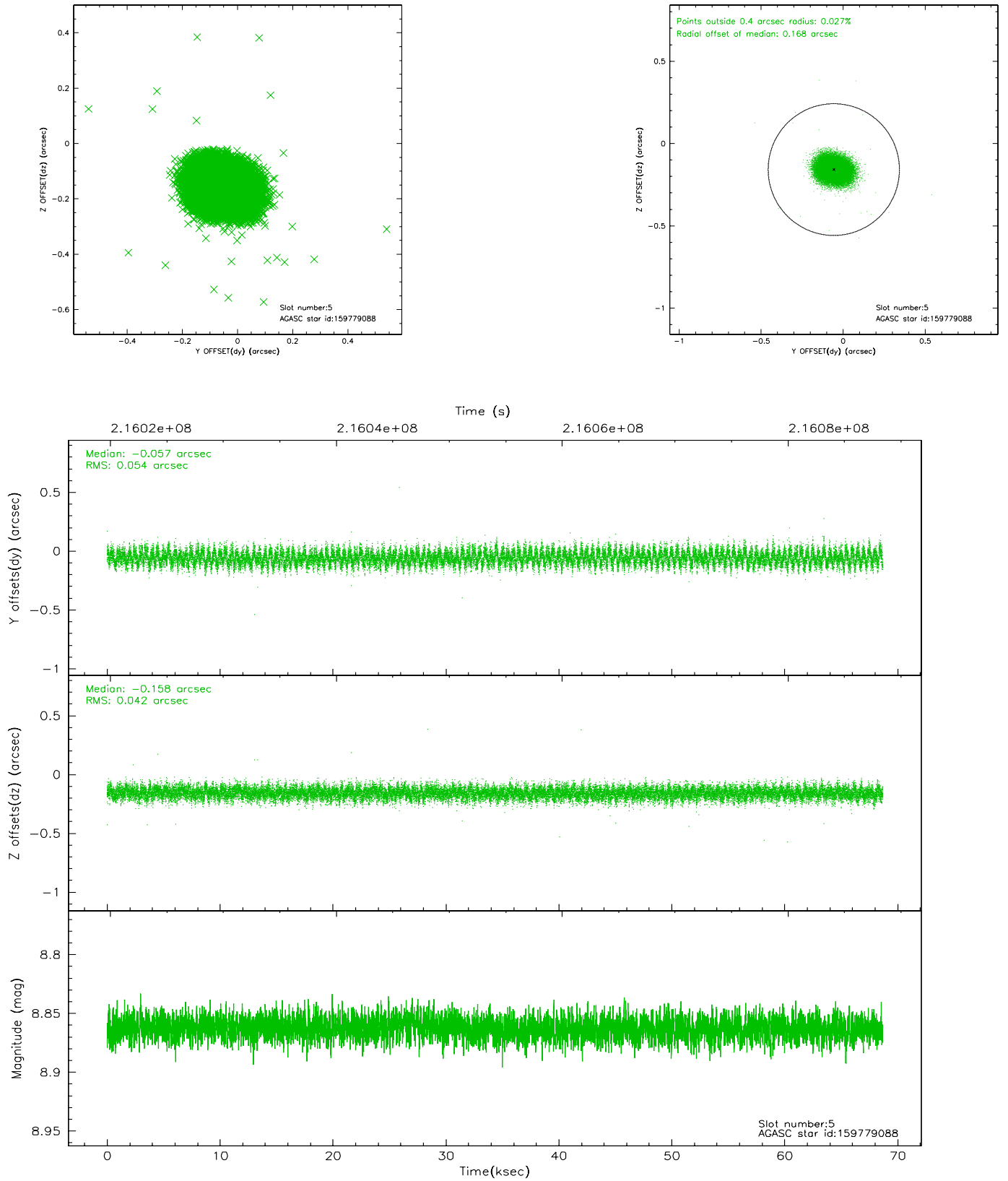
2.4.1 Slot 3



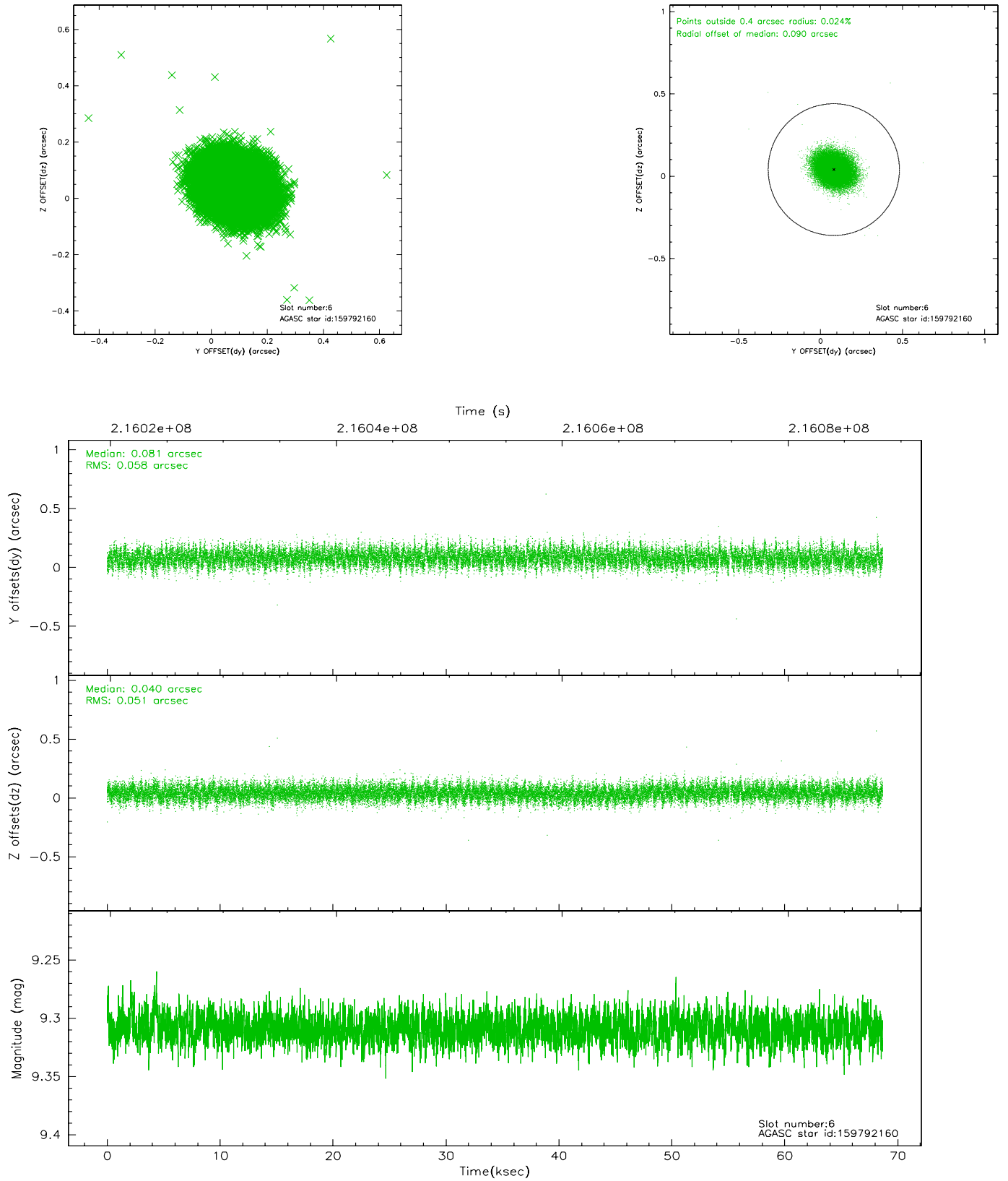
2.4.2 Slot 4



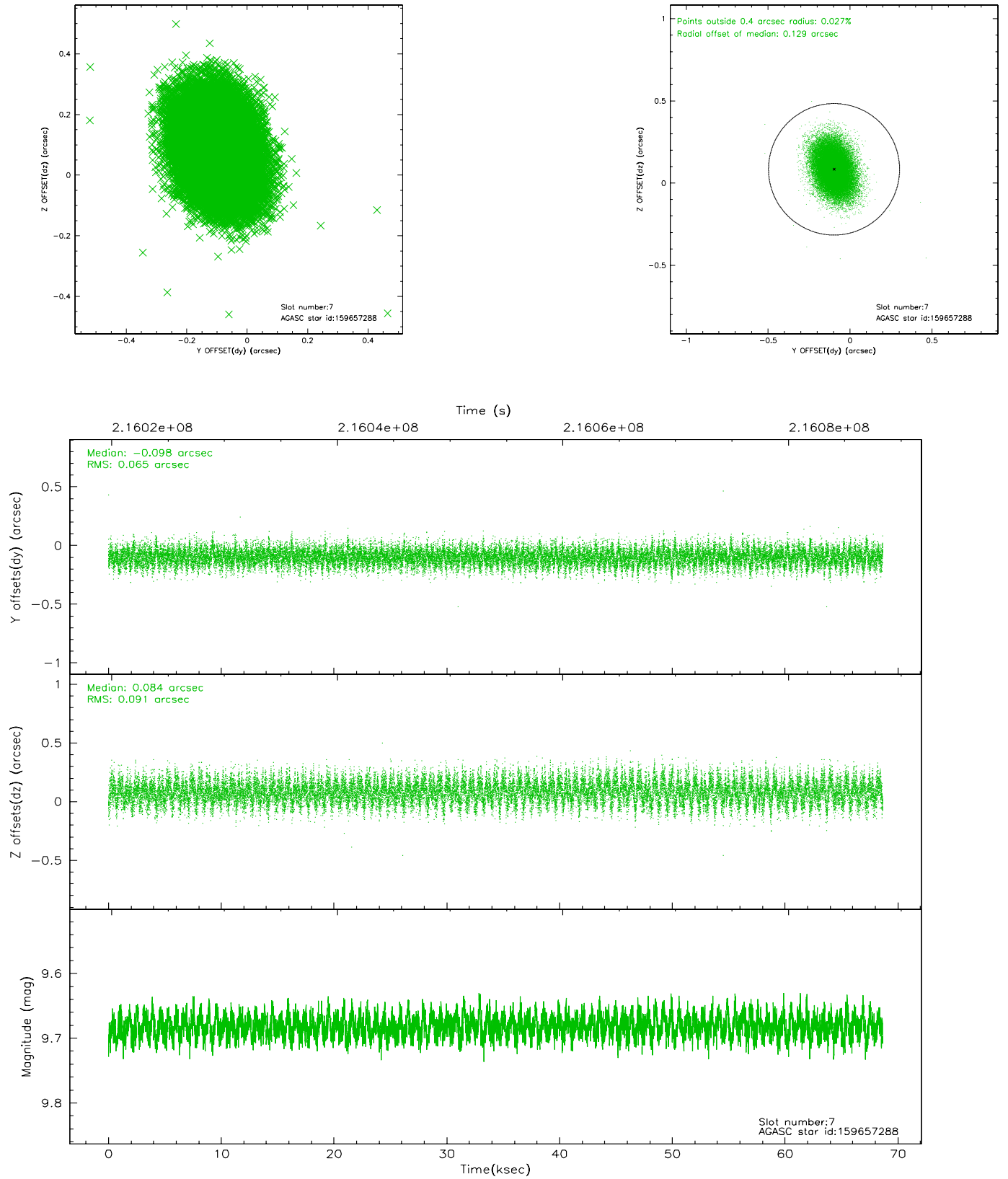
2.4.3 Slot 5



2.4.4 Slot 6

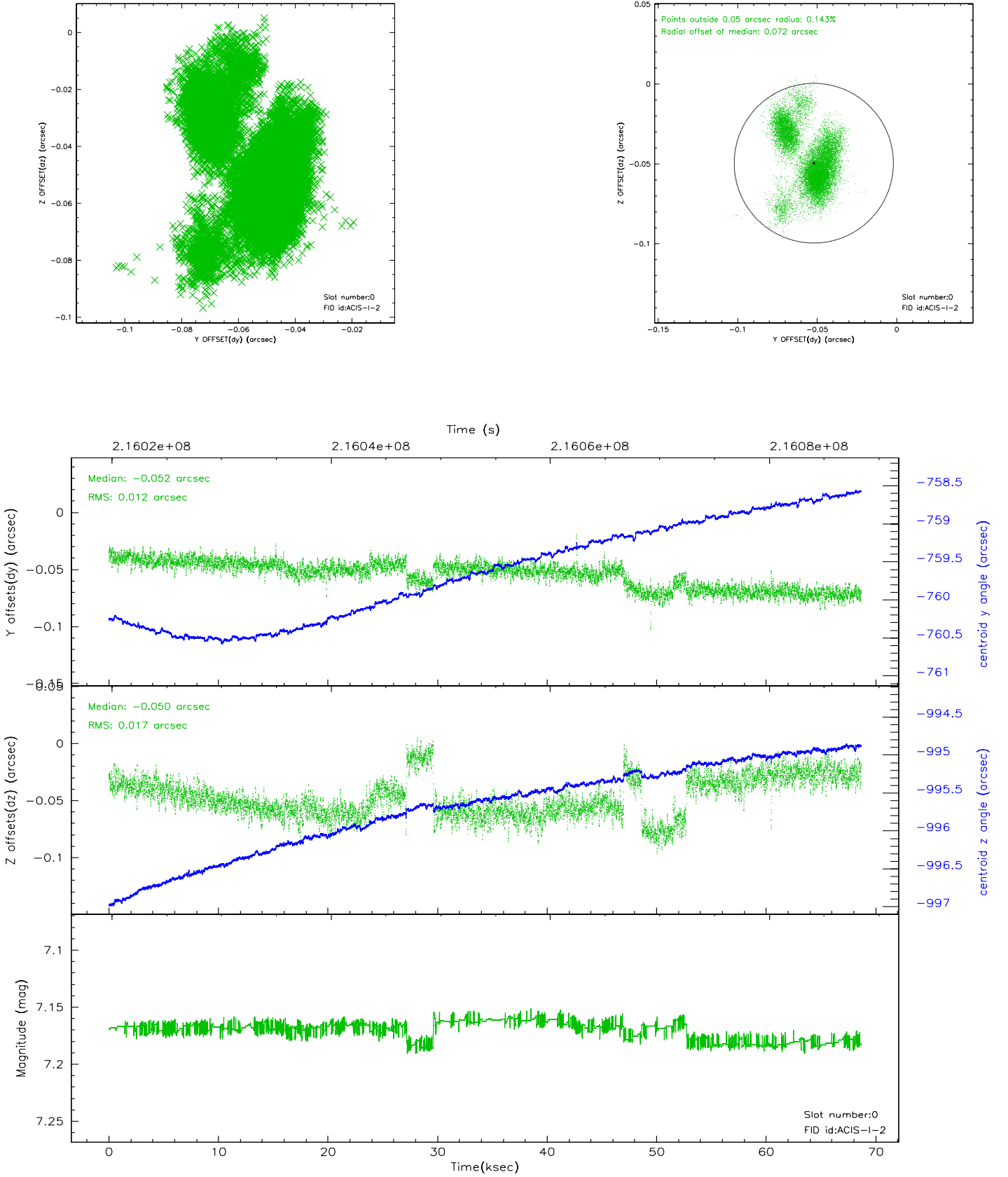


2.4.5 Slot 7

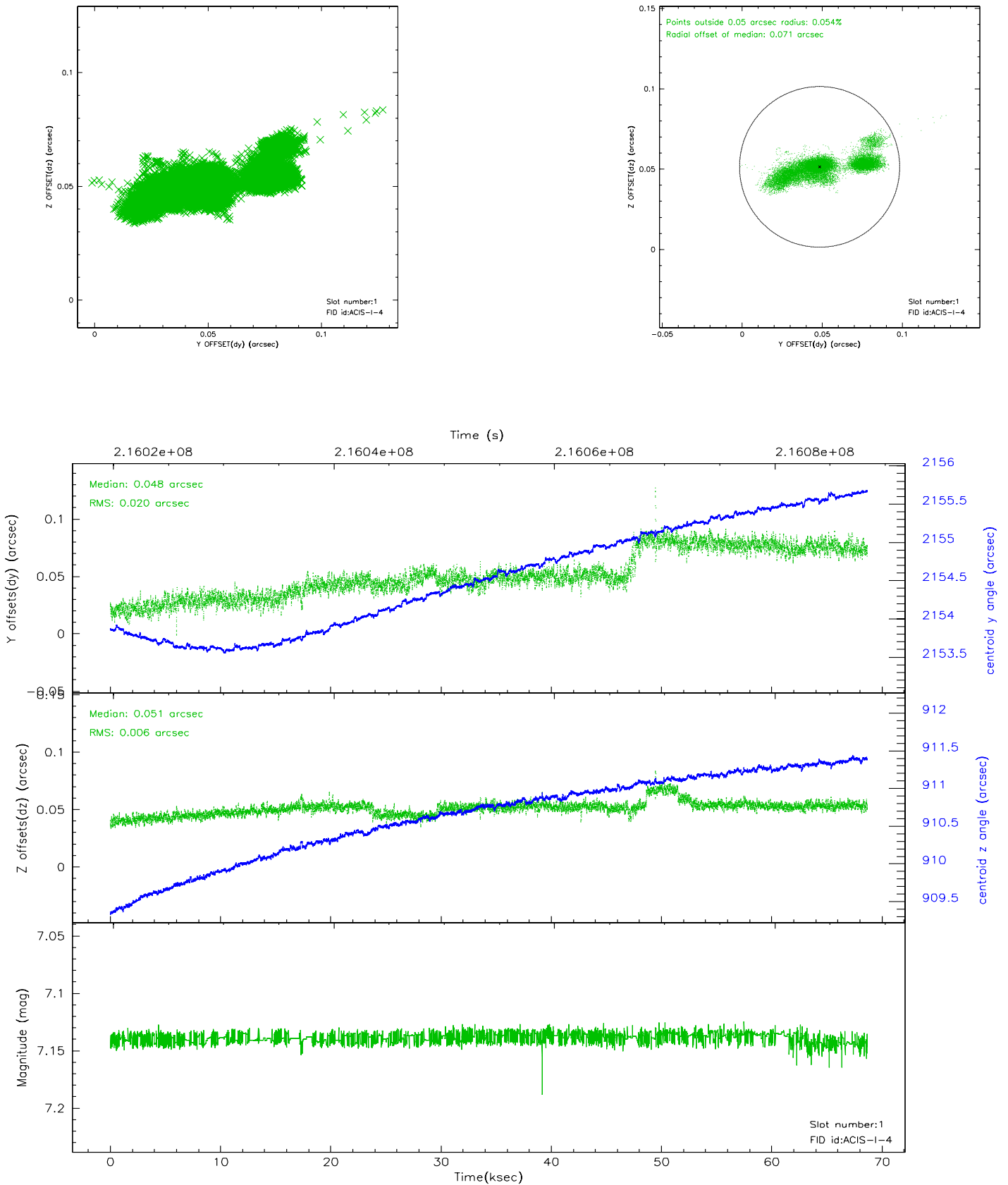


2.5 FID Slots

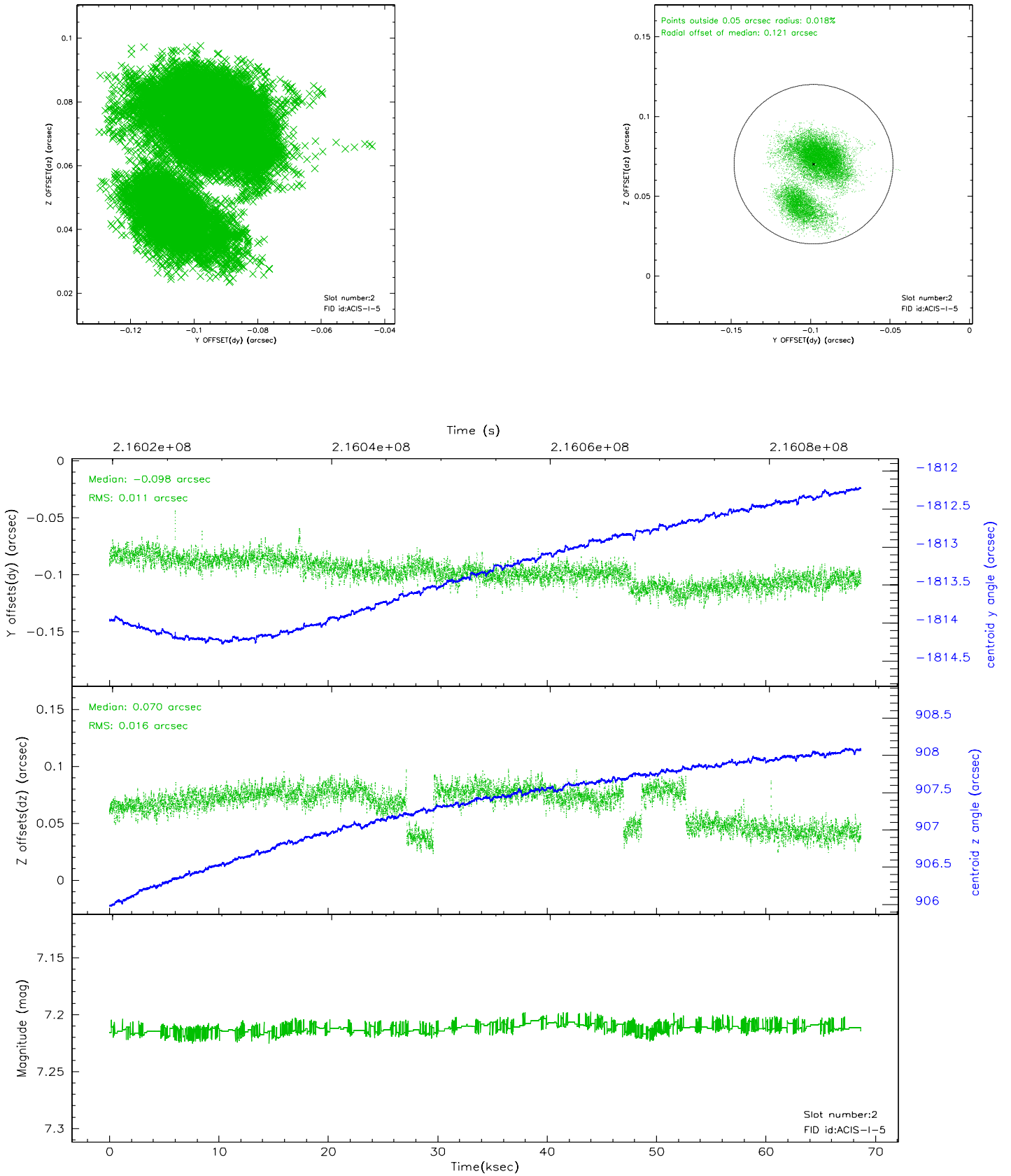
2.5.1 Slot 0



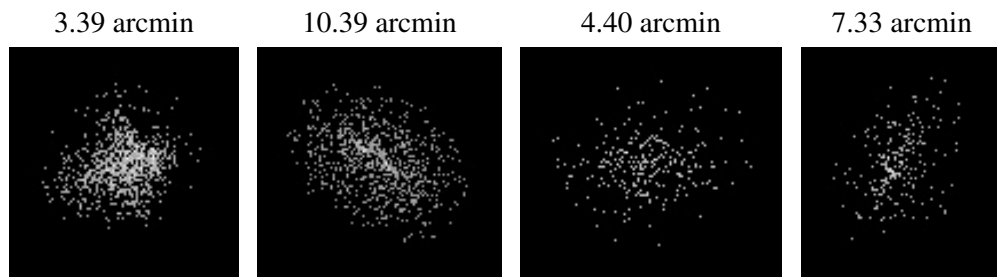
2.5.2 Slot 1



2.5.3 Slot 2



3 Point Sources



A Summary

A.1 Status

V&V Scientist	Jen Lauer
V&V Date (YYYY-MM-DD)	2006.04.12
V&V Edition	1
V&V Disposition and Status	OK
V&V Charge Time	68.668

A.2 Comments

The ACIS focal plane temperature increases by a degree over the course of the observation.