

V&V Reference Report

L2 ASCDS Version : 7.6.7.1

Observation 6361 - L2 Version 002
Chandra X-Ray Center

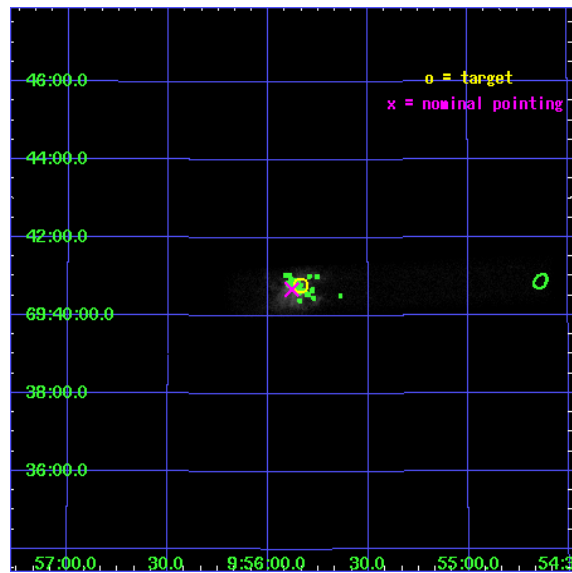
L2 Processing Date : Mar 20 2006

Contents

1	Front	2
2	OBI	3
2.1	OBI	3
2.1.1	Images	3
2.1.2	Parameters	4
2.1.3	Events	4
2.2	Compared Parameters	5
2.3	Aspect	6
2.4	Star Slots	9
2.4.1	Slot 3	9
2.4.2	Slot 4	10
2.4.3	Slot 5	11
2.4.4	Slot 6	12
2.4.5	Slot 7	13
2.5	FID Slots	14
2.5.1	Slot 0	14
2.5.2	Slot 1	15
2.5.3	Slot 2	16
3	Point Sources	17
A	Summary	18
A.1	Status	18
A.2	Comments	18

1 Front

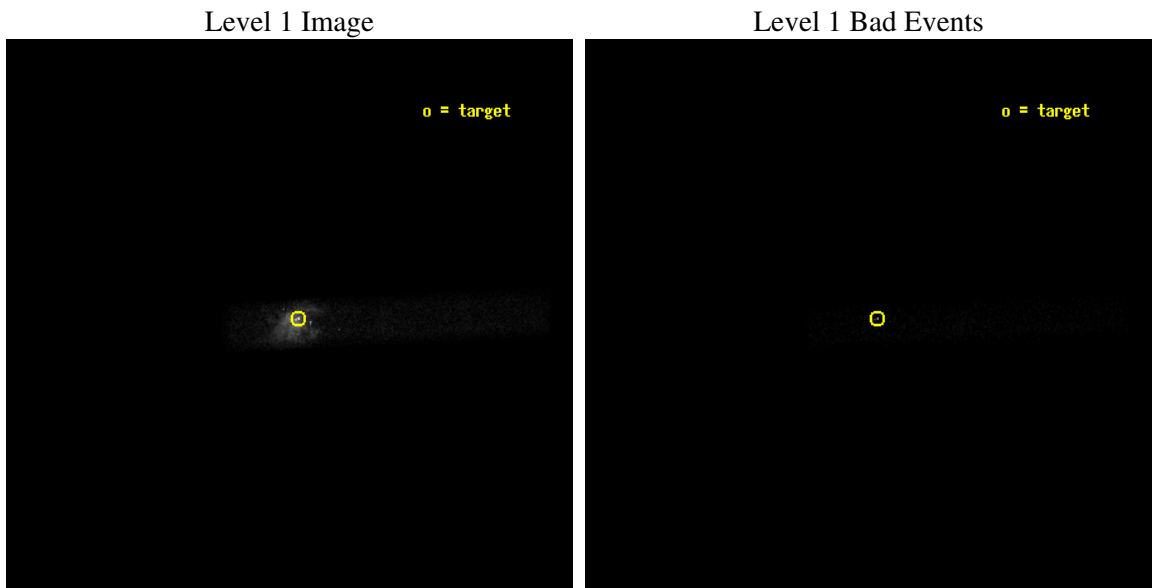
seq_num	701067
obs_id	6361
title	Chandra and RXTE Observations of the Ultraluminous QPO Source in M82
observer	Dr. Tod Strohmayer
object	CXO M82 J095550.2+694047
dtcycle	0
cycle	P
ra_targ	148.959167
dec_targ	69.679722
ra_nom	148.97050955963
dec_nom	69.677863696041
roll_nom	357.24599586091
revision	2
ontime	19240.400286704
livetime	17450.027468442
ontime7	19240.400286704
l2events	71827



2 OBI

2.1 OBI

2.1.1 Images



2.1.2 Parameters

obi_num	0
ascdsver	7.6.7.1
caldbver	3.2.1
date	2006-03-20T10:52:45
revision	2

sched_exp_time	19104.362000
ontime	20922.258209765
ontime7	20922.258209765
l1events	92737

2.1.3 Events

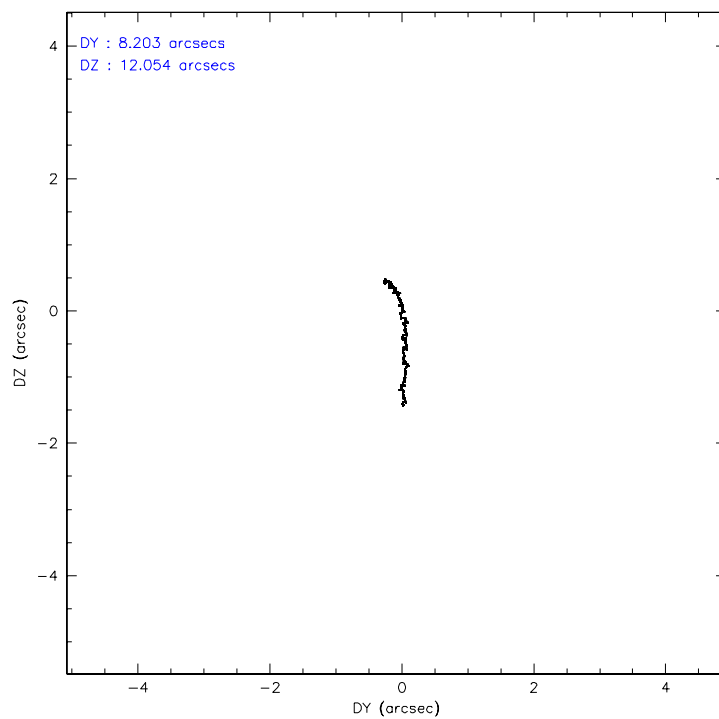
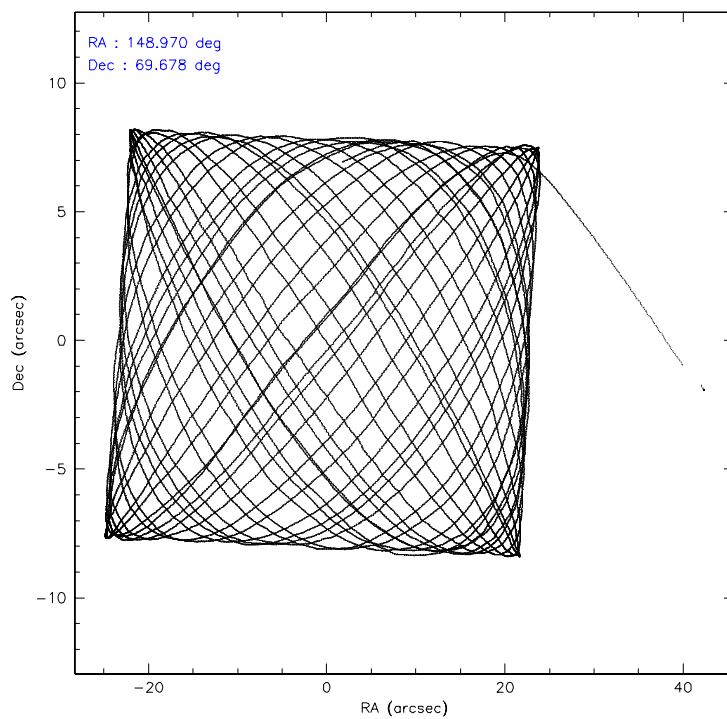
	ccd 7
level 1 events	92737
rejected events	19930
rejected %	21%

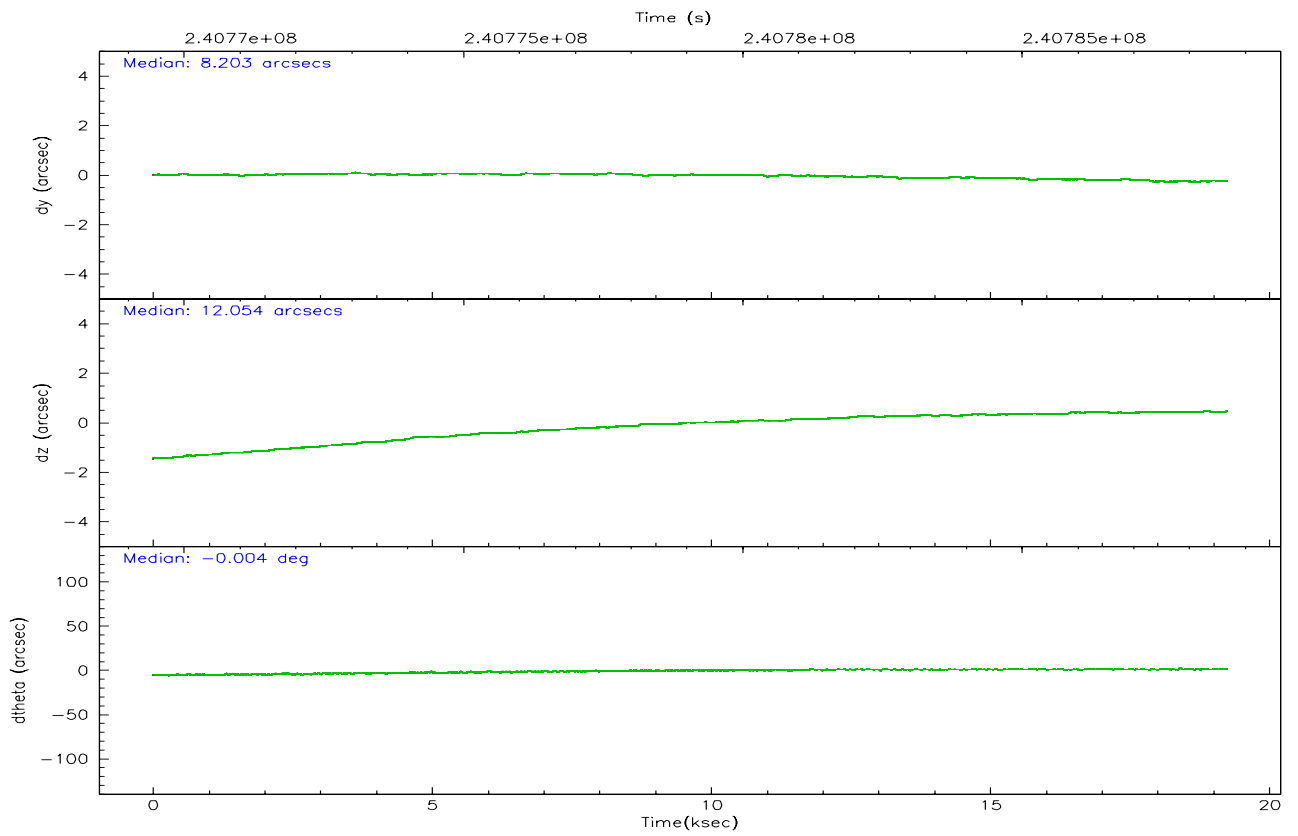
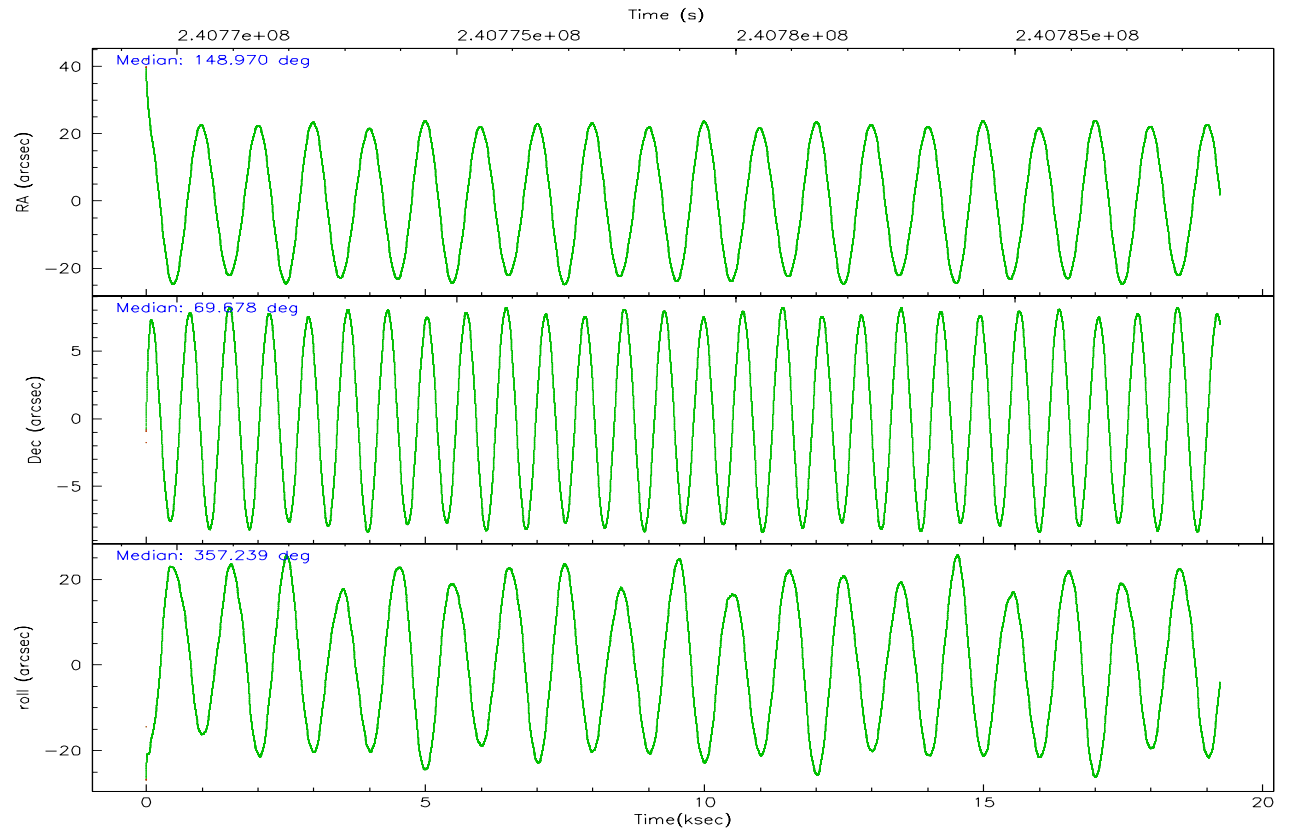
	ccd 7
grade 0 events	15341
	16%
grade 1 events	147
	0%
grade 2 events	19568
	21%
grade 3 events	7909
	8%
grade 4 events	8063
	8%
grade 5 events	2975
	3%
grade 6 events	23380
	25%
grade 7 events	15354
	16%

2.2 Compared Parameters

Parameter	Planned	Actual	Parameter	Planned	Actual
Instrument	ACIS	ACIS	Obspar format version number	6	6
Detector	ACIS-7	ACIS-7	Obspar file type	PREDICTED	ACTUAL
Grating	NONE	NONE	Obspar update status	NONE	UPDATED
Data mode	GRADED	GRADED	On-chip summing requested	N	N
Observation mode	POINTING	POINTING	Subarray requested	1/8	1/8
Pointing RA	148.901326	148.9705095596334	Subarray start row	0	449
Pointing Dec	69.665040	69.67786369604076	Subarray row count	1024	128
Pointing Roll	357.154243	357.2459958609091	Alternating exposures requested	N	N
SIM focus pos (mm)	-0.684267	-0.6828225247311905	Primary exposure time	0.000000	0.4
SIM defocus (mm)	0	0.001444936568705701			
SIM translation stage pos (mm)	-190.132523	-190.1400660498719			
SIM translation stage offset (mm)	0	0.00754346686406393			
Observation start time	240769574.184000	240767756.52699			
Observation start date	2005-08-18T16:25:10	2005-08-18T15:55:56			
Observation end time	240788678.184000	240788896.12796			
Observation end date	2005-08-18T21:43:34	2005-08-18T21:48:16			
Read mode	TIMED	TIMED			

2.3 Aspect



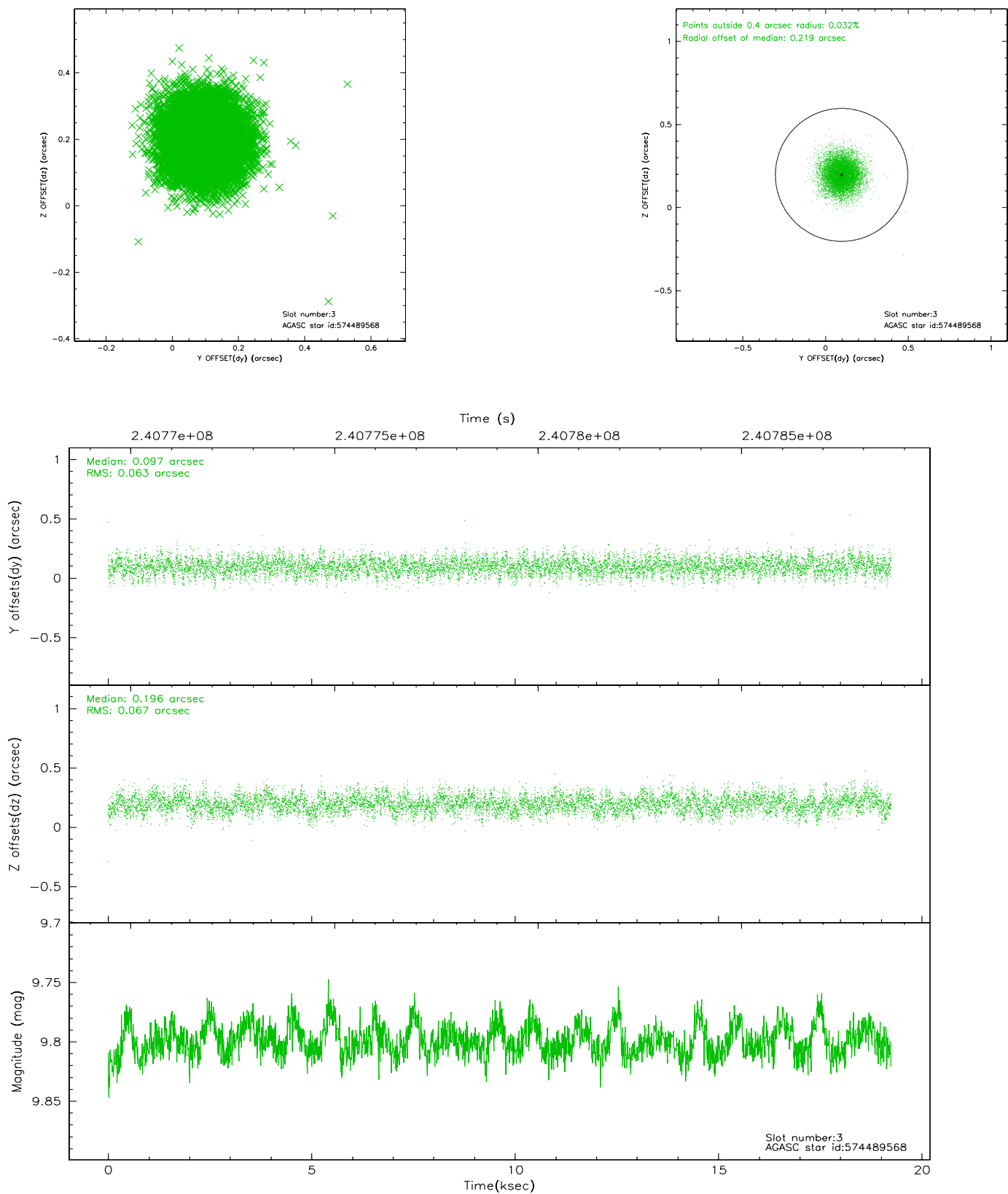


Slot Statistics

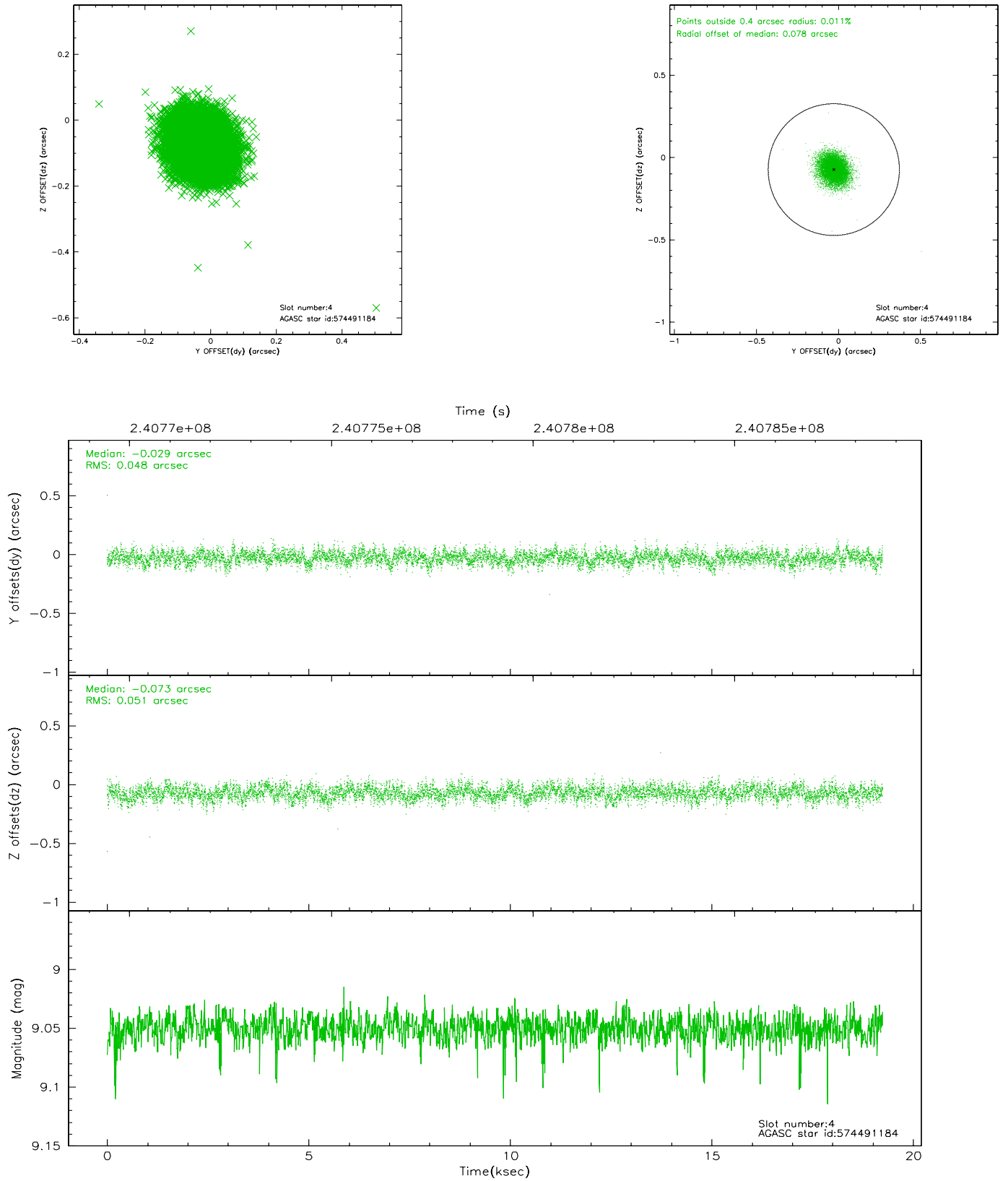
slot	status	id	mag	n_pts	med_dy	med_dz	dr1	dr2	ra	dec	mean_y	mean_z
0	FID	ACIS-S-2	7.10	4694	-0.003	-0.003	0.015	0.029	0.000000	0.000000	-760.95	-1733.16
1	FID	ACIS-S-4	7.20	4694	0.062	0.003	0.018	0.029	0.000000	0.000000	2152.30	175.13
2	FID	ACIS-S-5	7.23	4694	-0.088	0.010	0.014	0.021	0.000000	0.000000	-1813.62	169.02
3	GUIDE	574489568	9.80	9381	0.097	0.196	0.098	0.159	147.223974	69.438157	-2078.37	-892.01
4	GUIDE	574491184	9.05	9363	-0.029	-0.073	0.074	0.120	148.582453	69.768699	-415.08	353.89
5	GUIDE	574491280	9.36	9381	0.016	0.067	0.101	0.159	148.611567	69.450135	-327.67	-790.48
6	GUIDE	574491872	9.25	9377	0.038	-0.085	0.085	0.140	147.207613	69.765453	-2125.26	283.36
7	GUIDE	574886464	9.79	9381	-0.124	-0.106	0.166	0.257	149.898674	70.203982	1117.35	2008.24

2.4 Star Slots

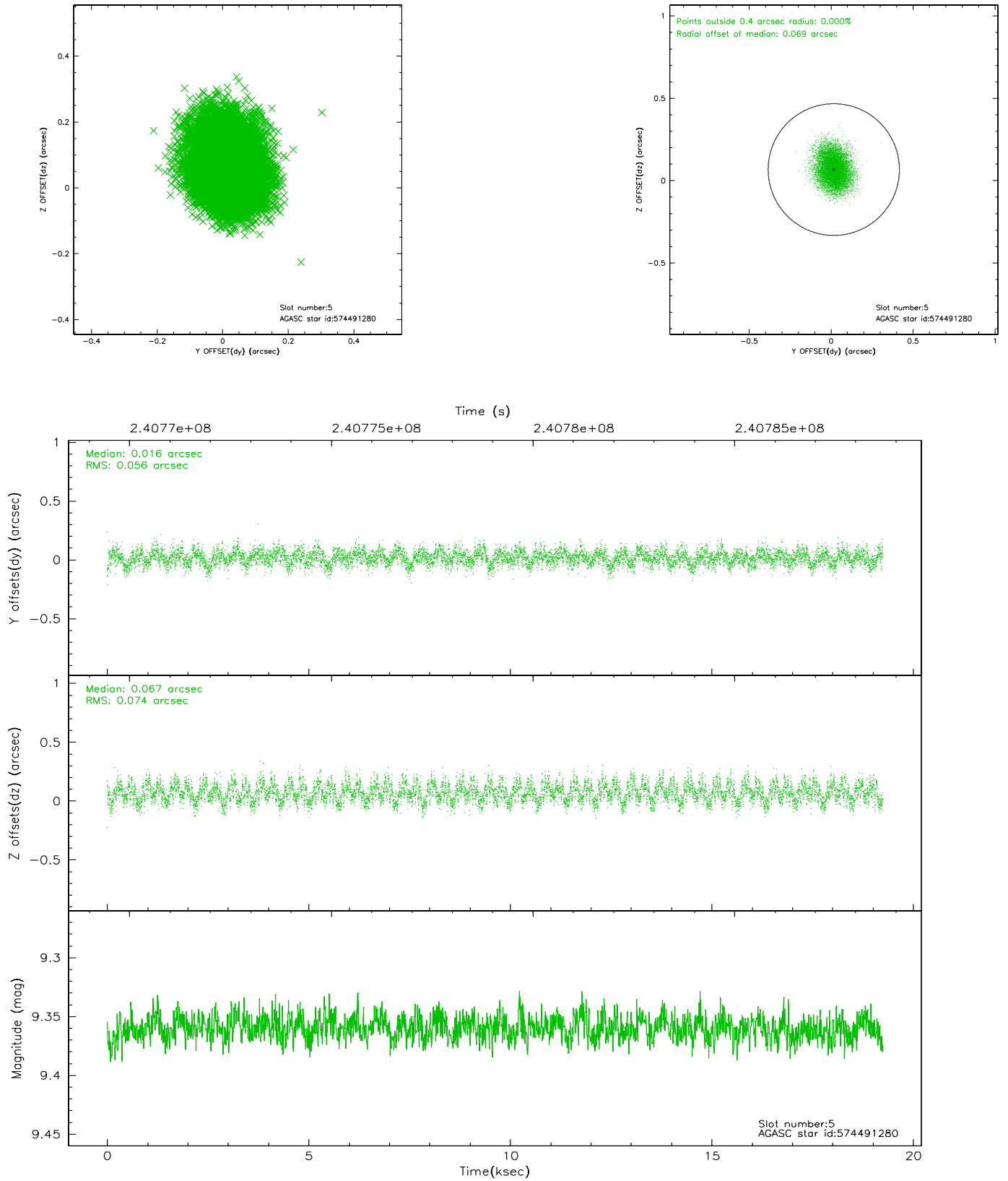
2.4.1 Slot 3



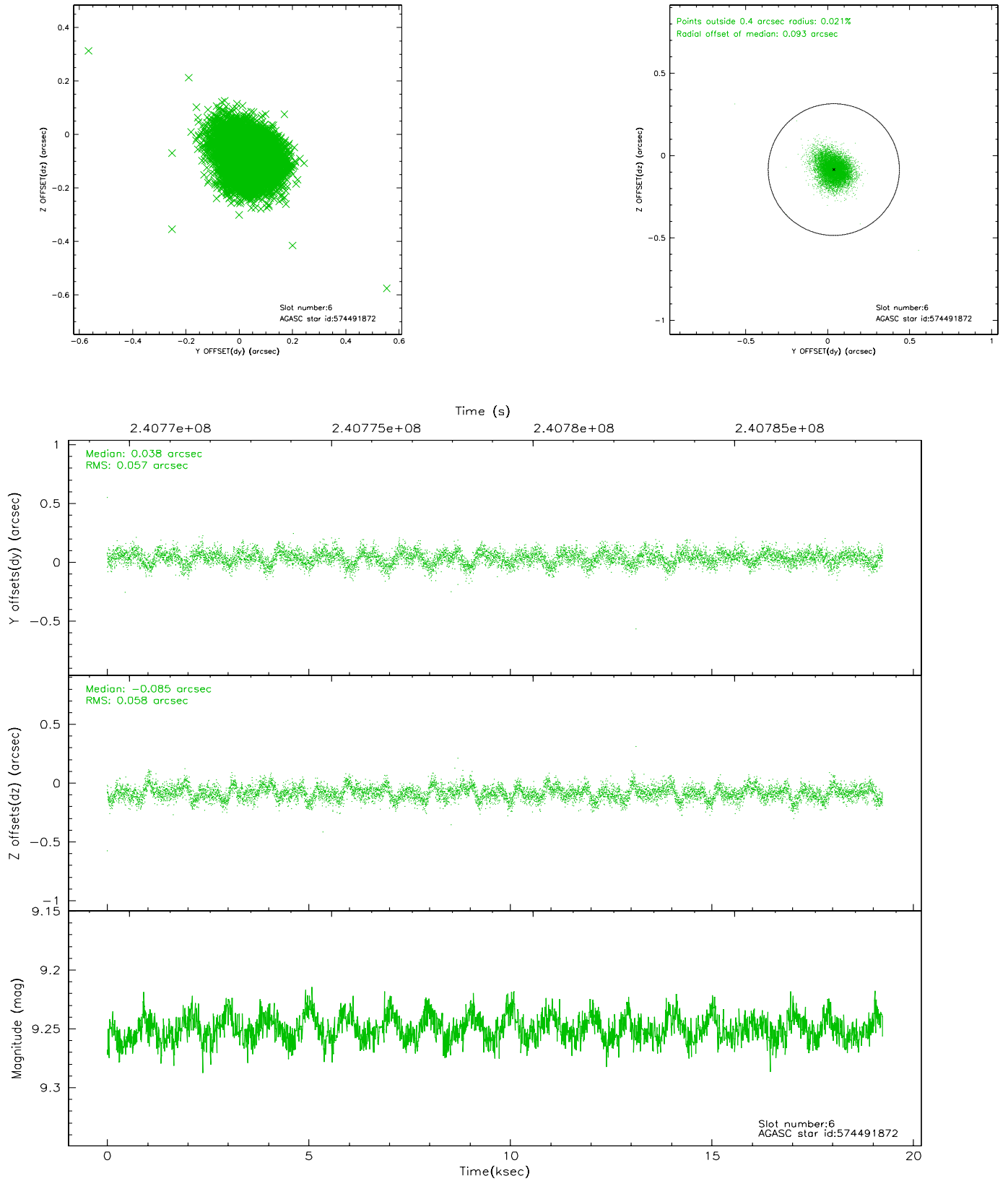
2.4.2 Slot 4



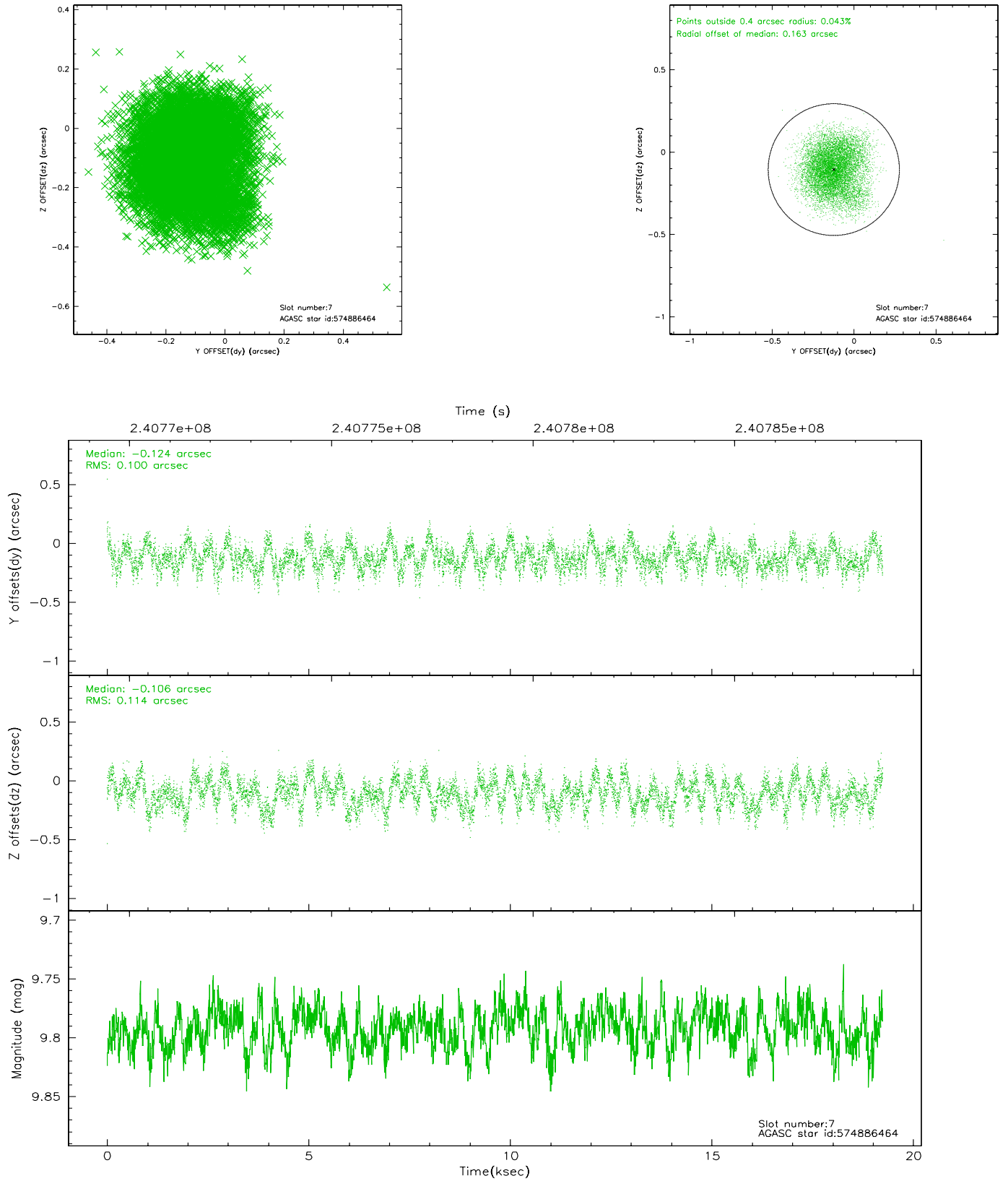
2.4.3 Slot 5



2.4.4 Slot 6

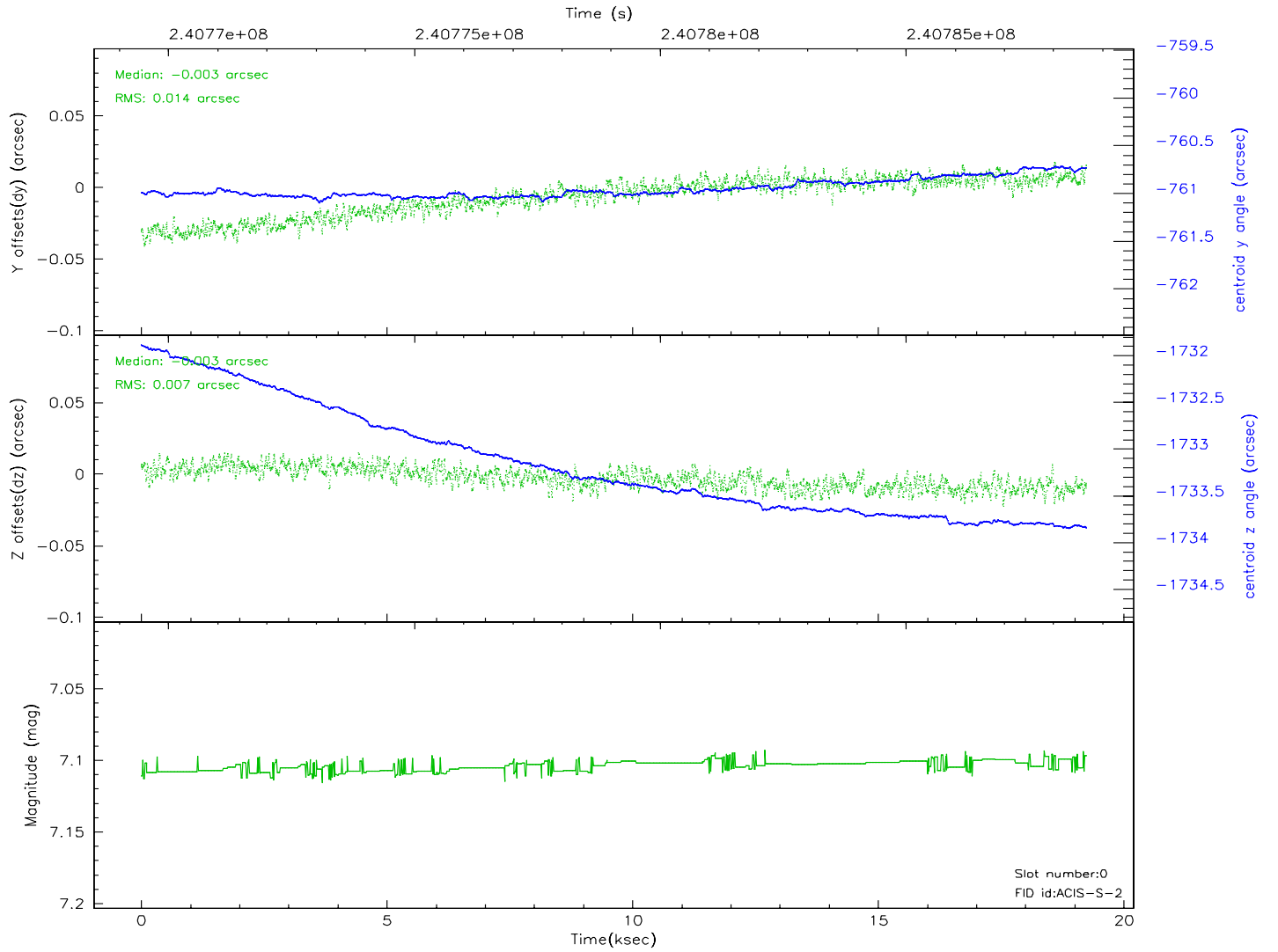
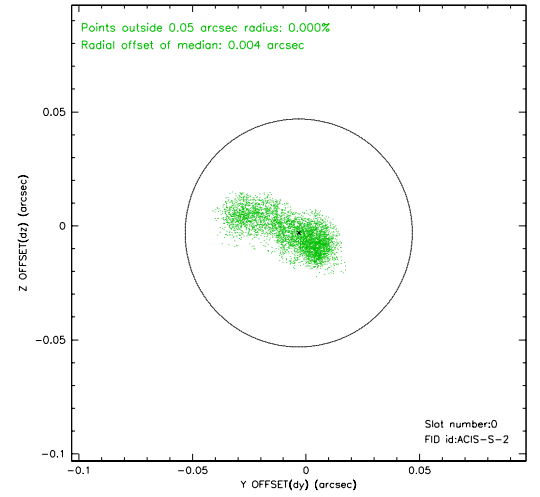
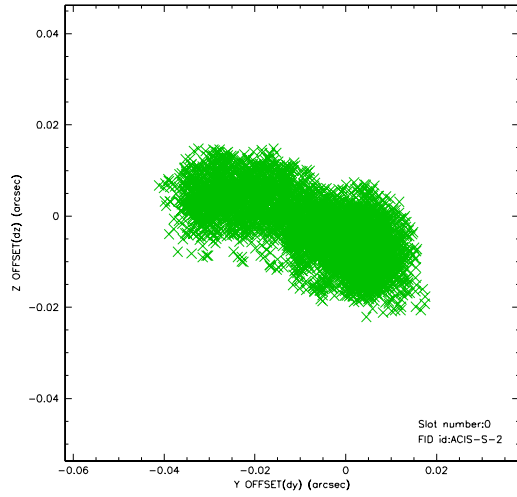


2.4.5 Slot 7

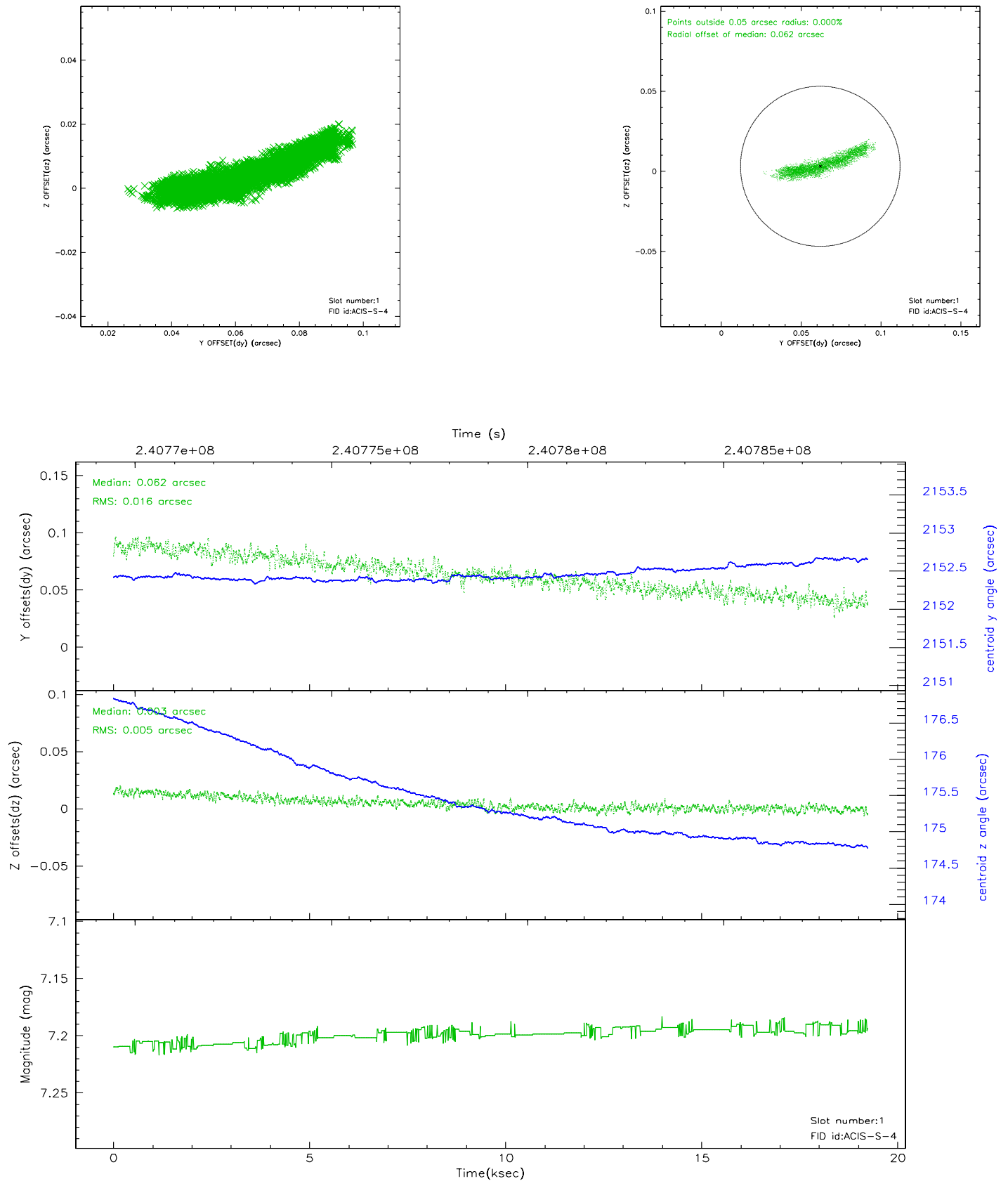


2.5 FID Slots

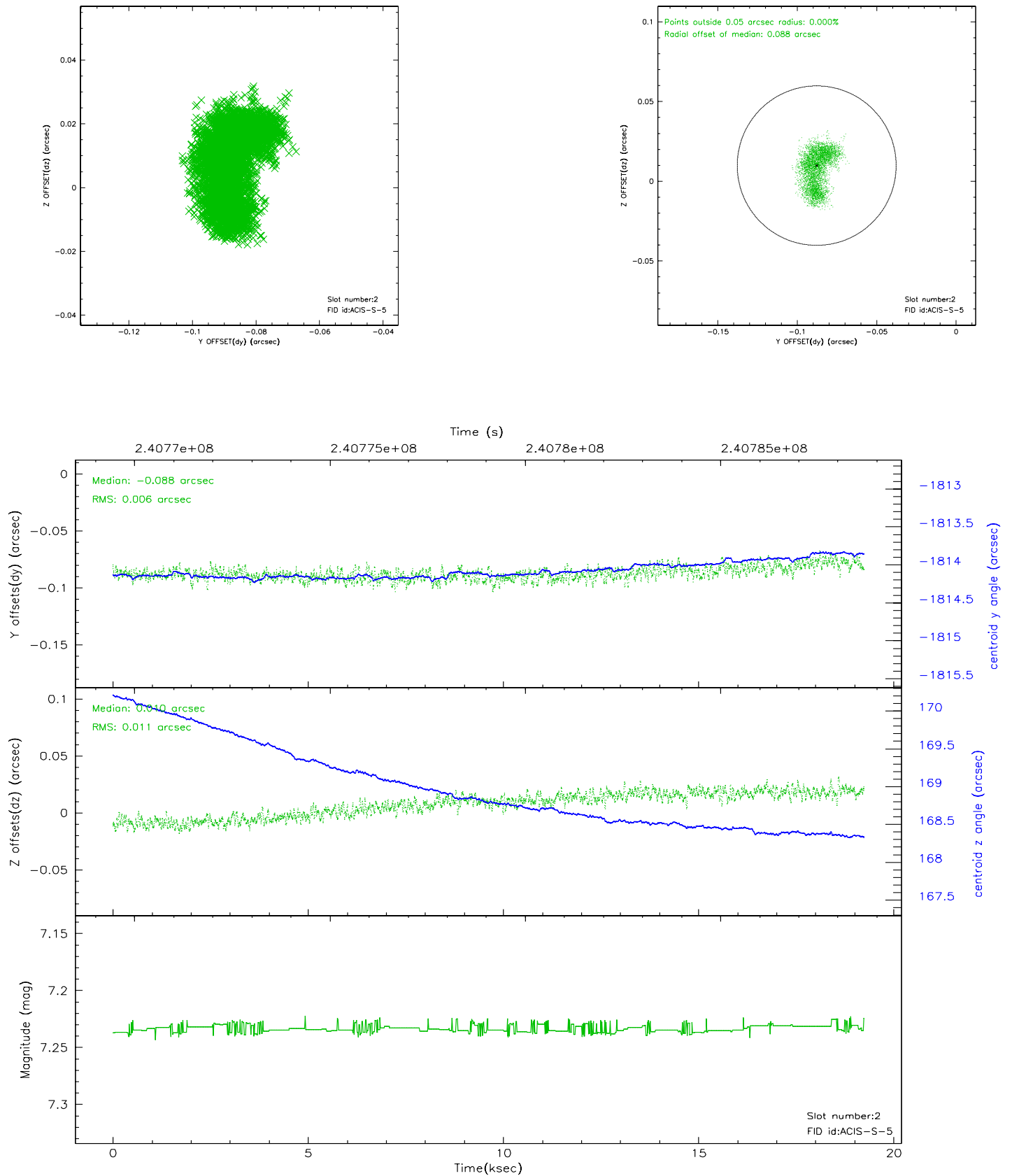
2.5.1 Slot 0



2.5.2 Slot 1



2.5.3 Slot 2



3 Point Sources

A Summary

A.1 Status

V&V Scientist	Jen Lauer
V&V Date (YYYY-MM-DD)	2006.03.20
V&V Edition	1
V&V Disposition and Status	OK
V&V Charge Time	19.2404

A.2 Comments

Possible radiation event at about 7 ksec into the observation appears to cause a modest increase in count rate.