

V&V Reference Report

L2 ASCDS Version : 7.6.7.1

Observation 6347 - L2 Version 002
Chandra X-Ray Center

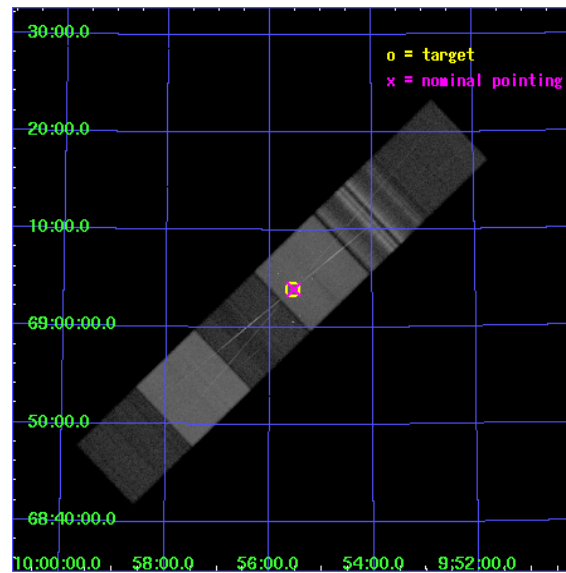
L2 Processing Date : Mar 14 2006

Contents

1	Front	2
2	OBI	3
2.1	OBI	3
2.1.1	Images	3
2.1.2	Bias	3
2.1.3	Parameters	4
2.1.4	Events	4
2.2	Compared Parameters	5
2.3	Aspect	6
2.4	Star Slots	9
2.4.1	Slot 3	9
2.4.2	Slot 4	10
2.4.3	Slot 5	11
2.4.4	Slot 6	12
2.4.5	Slot 7	13
2.5	FID Slots	14
2.5.1	Slot 0	14
2.5.2	Slot 1	15
2.5.3	Slot 2	16
3	Gratings	17
3.1	HEG Arm	17
3.2	MEG Arm	19
A	Summary	21
A.1	Status	21
A.2	Comments	21

1 Front

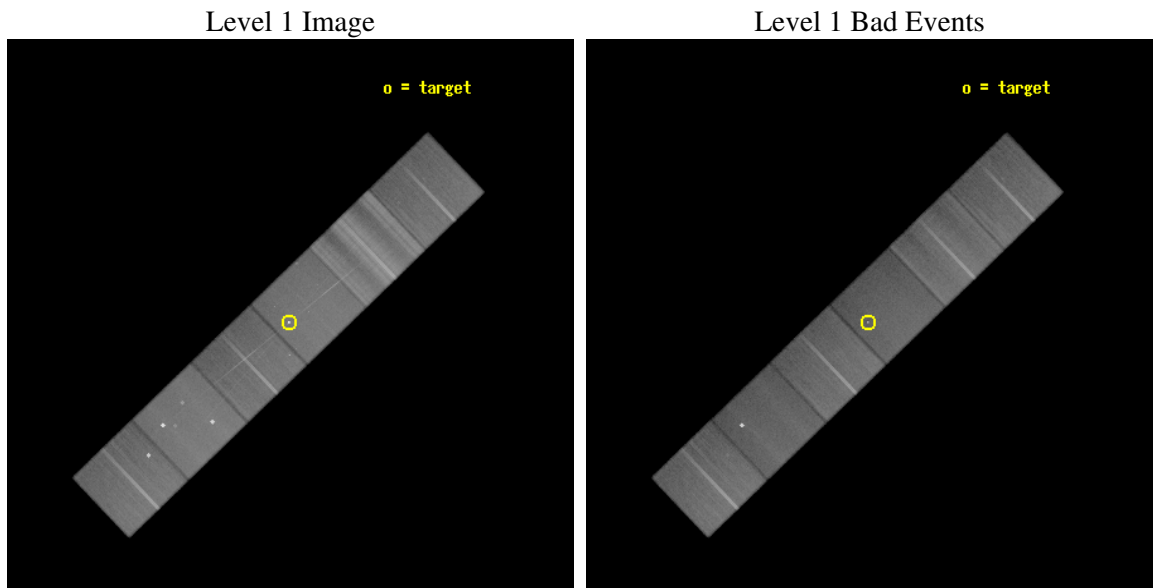
seq_num	701024
obs_id	6347
title	Understanding the accretion process in a Low-Luminosity AGN: is M81* a starved black hole?
observer	Dr. Claude Canizares
object	M81*
dtcycle	0
cycle	P
ra_targ	148.888333
dec_targ	69.065306
ra_nom	148.88208897402
dec_nom	69.065141031188
roll_nom	316.16246143907
revision	2
ontime	64691.199759007
livetime	63872.040835294
ontime4	64687.958798736
ontime5	64691.199759007
ontime6	64691.199759007
ontime7	64691.199759007
ontime8	64691.199759007
ontime9	64684.717818439
l2events	1088637



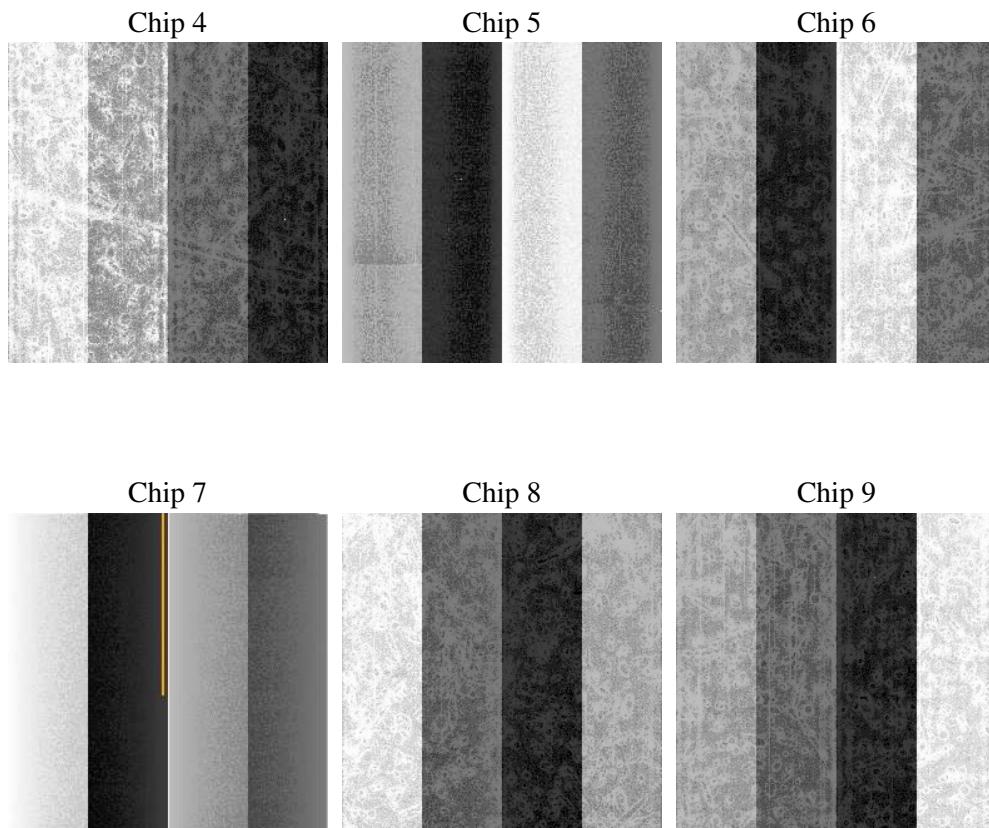
2 OBI

2.1 OBI

2.1.1 Images



2.1.2 Bias



2.1.3 Parameters

obi_num	1
ascdsver	7.6.7.1
caldsver	3.2.1
date	2006-03-14T19:31:48
revision	2

sched_exp_time	64733.558000
ontime	64696.842911452
ontime4	64693.601951182
ontime5	64696.842911452
ontime6	64696.842911452
ontime7	64696.842911452
ontime8	64696.842911452
ontime9	64690.360970885
l1events	4503468

2.1.4 Events

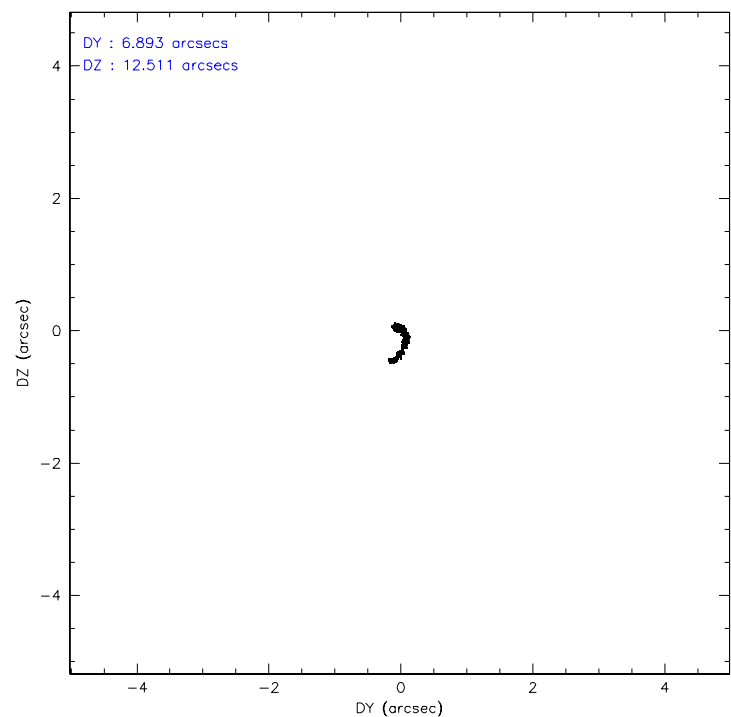
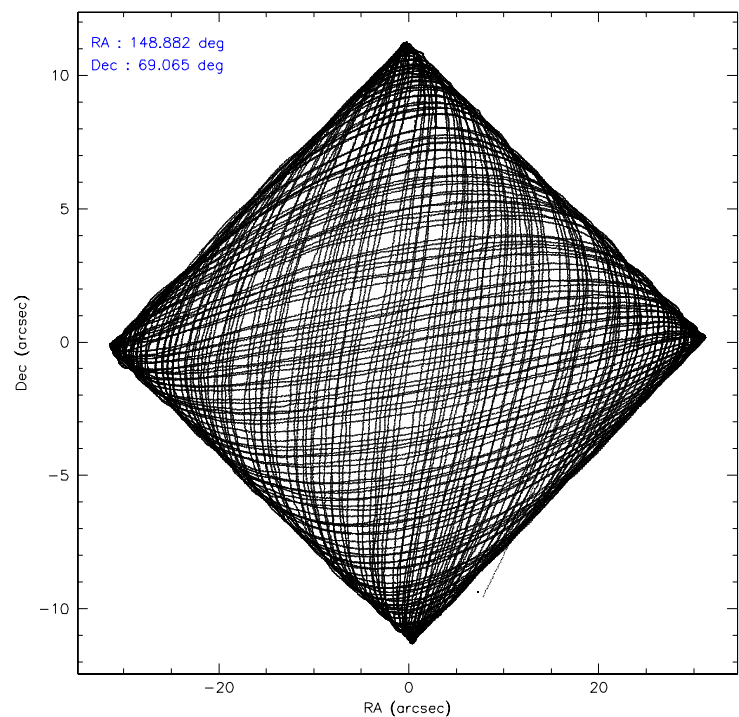
	ccd 4	ccd 5	ccd 6	ccd 7	ccd 8	ccd 9
level 1 events	698506	818992	651167	743324	983263	608216
rejected events	585487	439906	551389	423496	596259	519846
rejected %	83%	53%	84%	56%	60%	85%

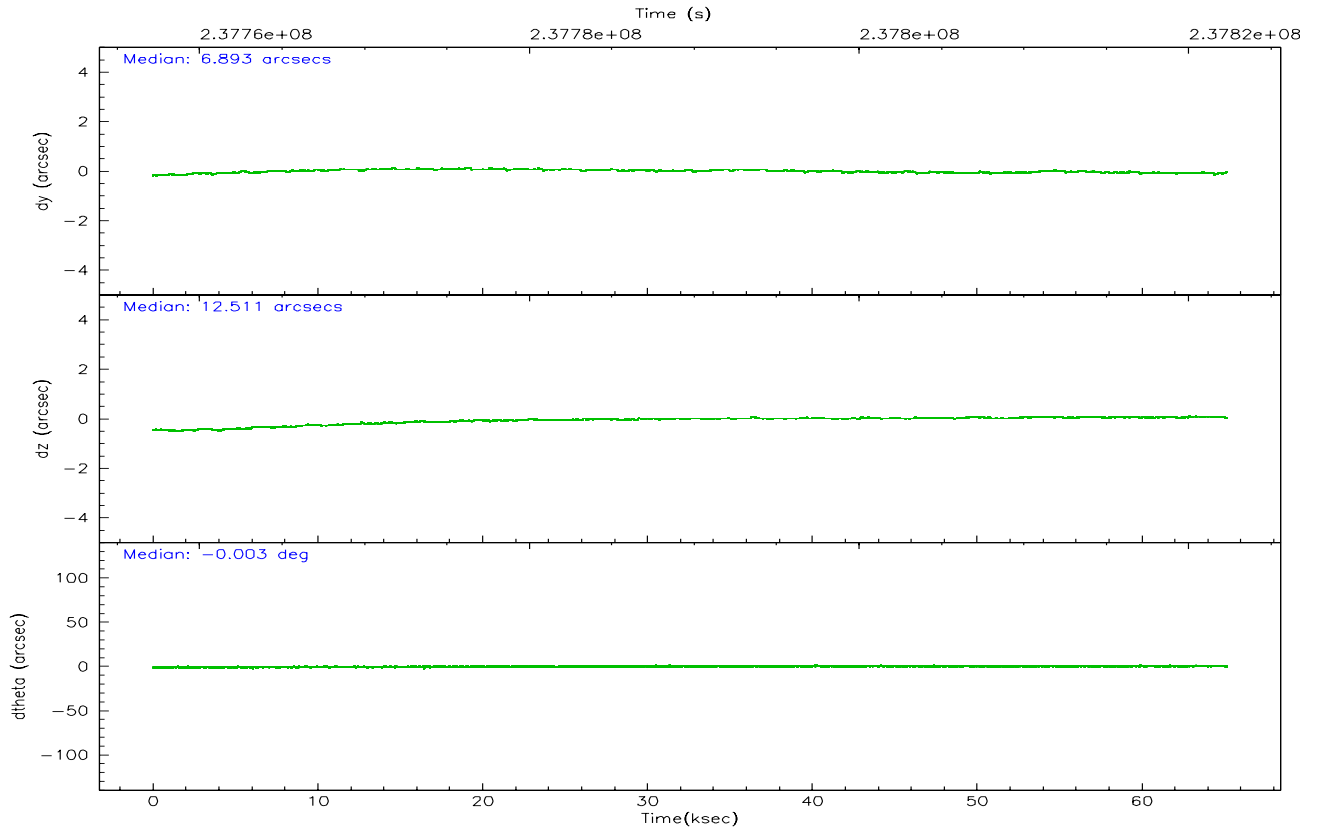
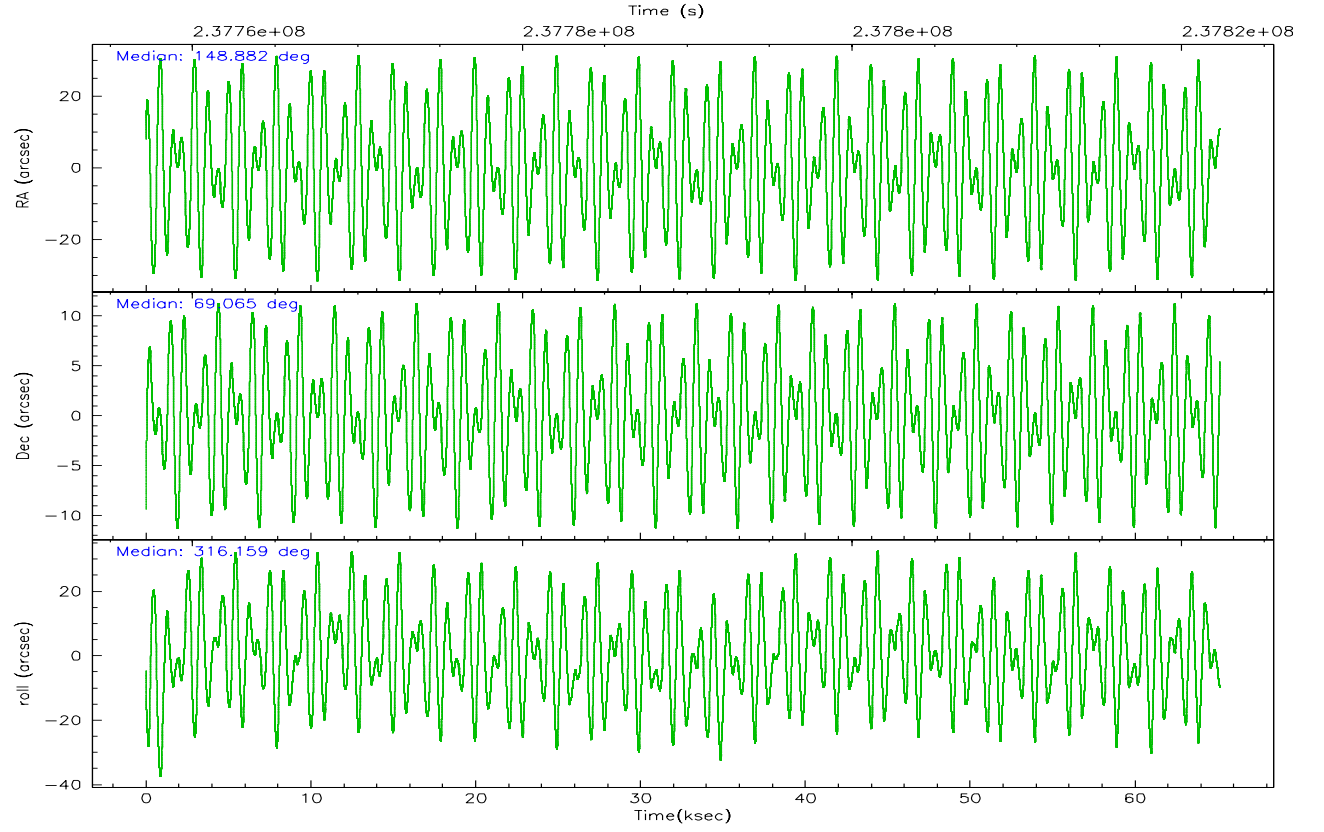
	ccd 4	ccd 5	ccd 6	ccd 7	ccd 8	ccd 9
grade 0 events	61663	32554	49055	22166	121037	42010
	8%	3%	7%	2%	12%	6%
grade 1 events	867	716	412	565	943	386
	0%	0%	0%	0%	0%	0%
grade 2 events	23152	124509	21059	82813	67780	17456
	3%	15%	3%	11%	6%	2%
grade 3 events	7798	9326	7036	17531	54023	7195
	1%	1%	1%	2%	5%	1%
grade 4 events	7509	8811	6960	16748	48227	6810
	1%	1%	1%	2%	4%	1%
grade 5 events	22545	38108	22838	46260	34201	24397
	3%	4%	3%	6%	3%	4%
grade 6 events	12902	203902	15672	180583	95988	14903
	1%	24%	2%	24%	9%	2%
grade 7 events	562070	401066	528135	376658	561064	495059
	80%	48%	81%	50%	57%	81%

2.2 Compared Parameters

Parameter	Planned	Actual	Parameter	Planned	Actual
Instrument	ACIS	ACIS	Obspar format version number	6	6
Detector	ACIS-456789	ACIS-456789	Obspar file type	PREDICTED	ACTUAL
Grating	HETG	HETG	Obspar update status	NONE	UPDATED
Data mode	FAINT	FAINT	On-chip summing requested	N	N
Observation mode	POINTING	POINTING	Subarray requested	NONE	NONE
Pointing RA	148.807850	148.8820889740243	Alternating exposures requested	N	N
Pointing Dec	69.071276	69.0651410311883	Primary exposure time	0.000000	3.2
Pointing Roll	316.075170	316.1624614390725			
SIM focus pos (mm)	-0.684267	-0.6828225247311905			
SIM defocus (mm)	0	0.001444936568705701			
SIM translation stage pos (mm)	-190.132523	-190.1400660498719			
SIM translation stage offset (mm)	0	0.00754346686406393			
Observation start time	237757603.184000	237756368.91404			
Observation start date	2005-07-14T19:45:39	2005-07-14T19:26:08			
Observation end time	237822336.184000	237822563.92957			
Observation end date	2005-07-15T13:44:32	2005-07-15T13:49:23			
Read mode	TIMED	TIMED			

2.3 Aspect



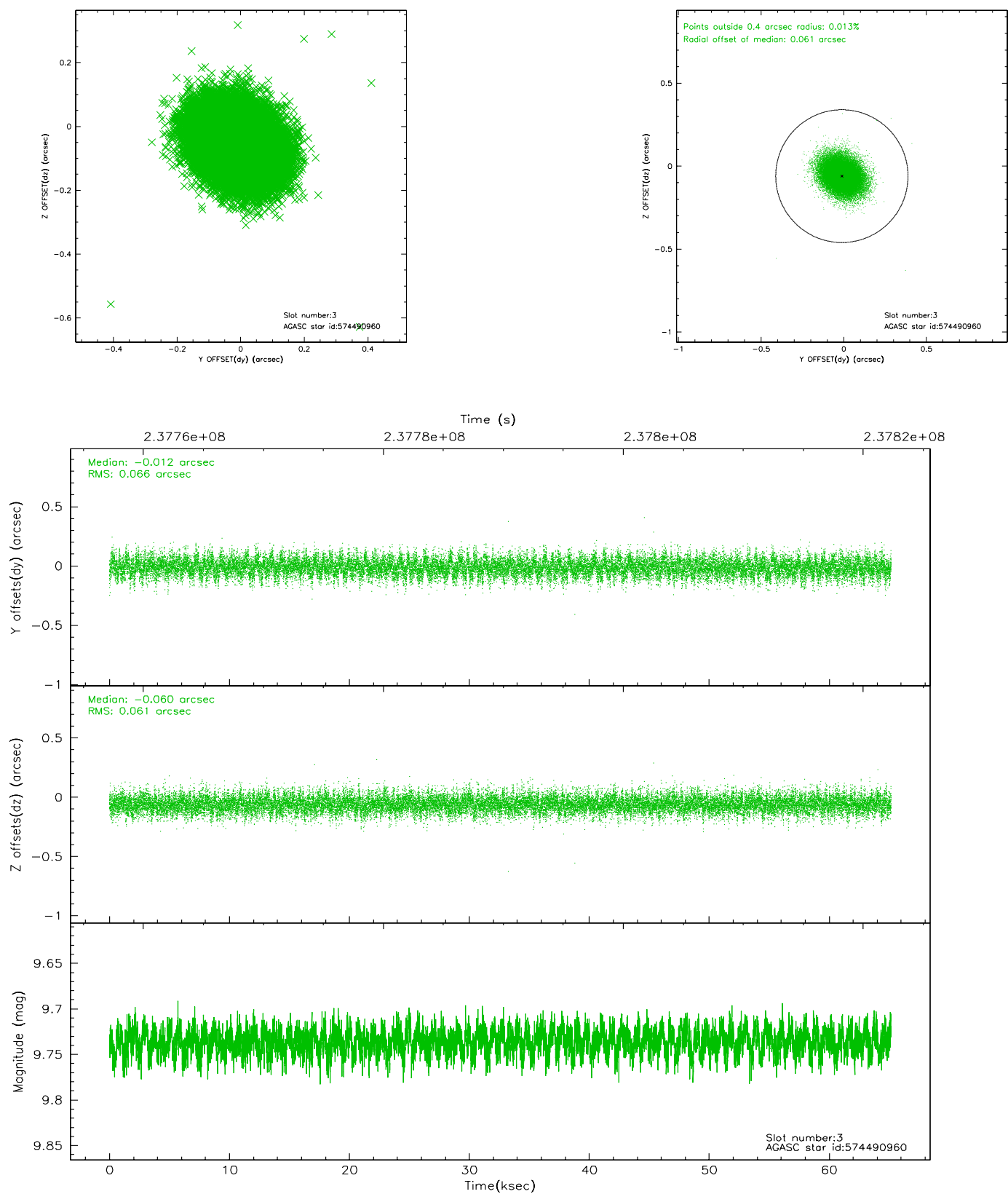


Slot Statistics

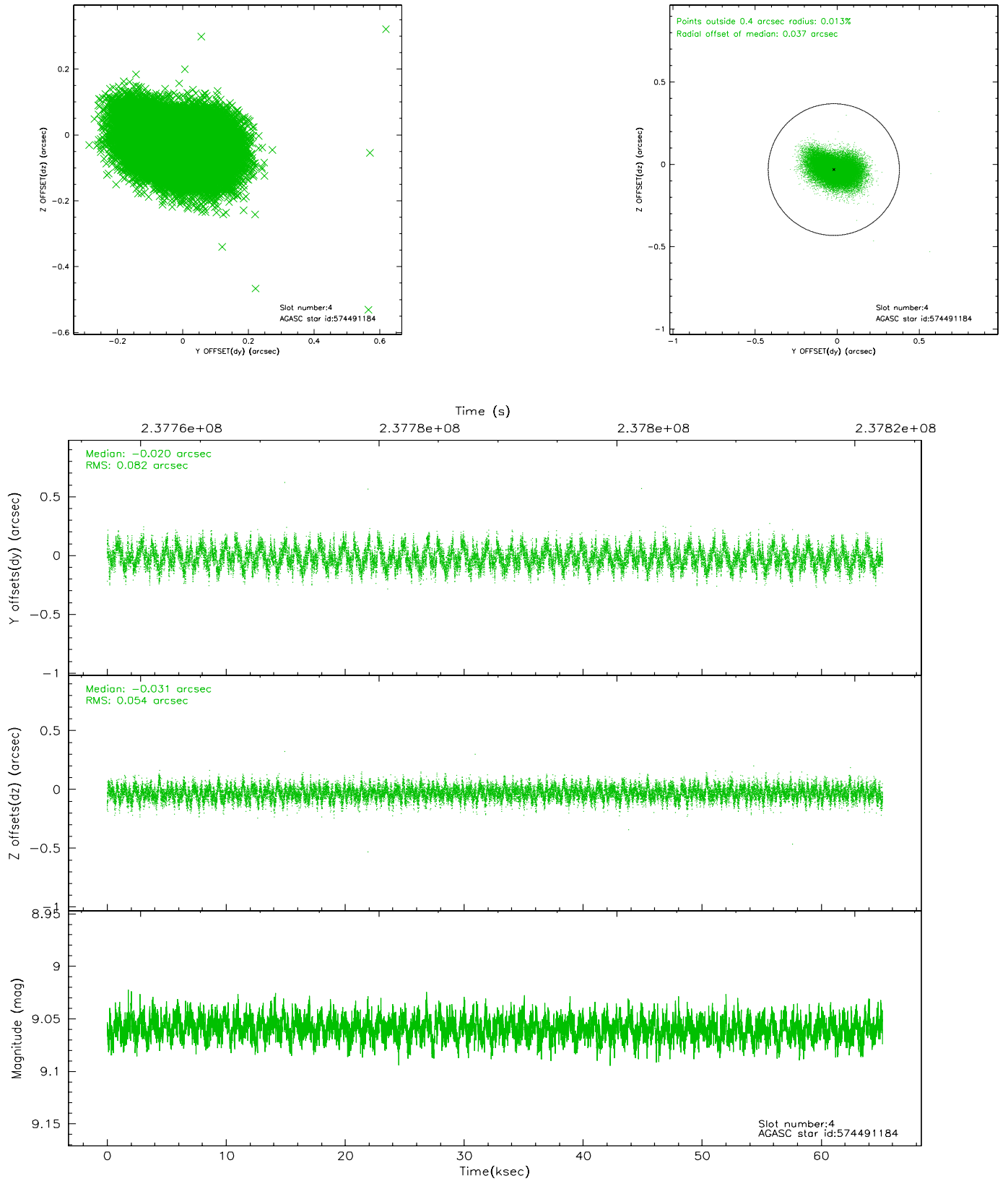
slot	status	id	mag	n_pts	med_dy	med_dz	dr1	dr2	ra	dec	mean_y	mean_z
0	FID	ACIS-S-2	7.10	15896	-0.008	-0.006	0.008	0.013	0.000000	0.000000	-759.66	-1733.75
1	FID	ACIS-S-4	7.20	15895	0.012	0.005	0.005	0.009	0.000000	0.000000	2153.67	174.77
2	FID	ACIS-S-5	7.23	15895	-0.036	0.009	0.007	0.013	0.000000	0.000000	-1812.58	168.42
3	GUIDE	574490960	9.74	31771	-0.012	-0.060	0.096	0.156	148.185918	69.658768	-2030.24	986.26
4	GUIDE	574491184	9.06	31775	-0.020	-0.031	0.104	0.173	148.582453	69.768699	-1944.10	1614.35
5	GUIDE	574491280	9.33	31767	-0.033	-0.027	0.089	0.147	148.611567	69.450135	-1125.02	810.01
6	GUIDE	574496312	10.27	31526	0.033	-0.004	0.164	0.279	149.547505	68.718299	1573.83	-240.13
7	GUIDE	574489568	9.79	31752	0.033	0.124	0.116	0.189	147.223974	69.438157	-2376.02	-418.87

2.4 Star Slots

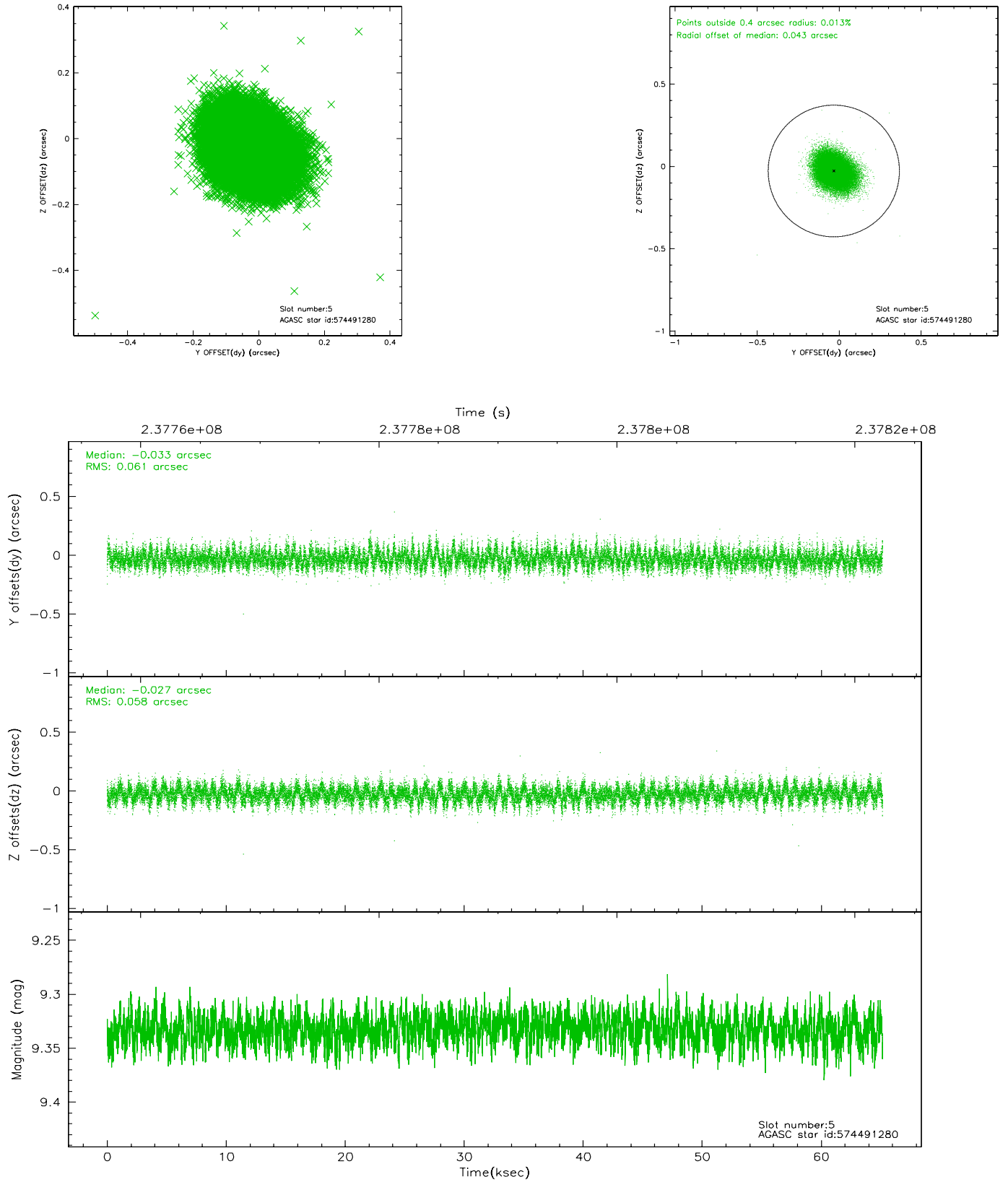
2.4.1 Slot 3



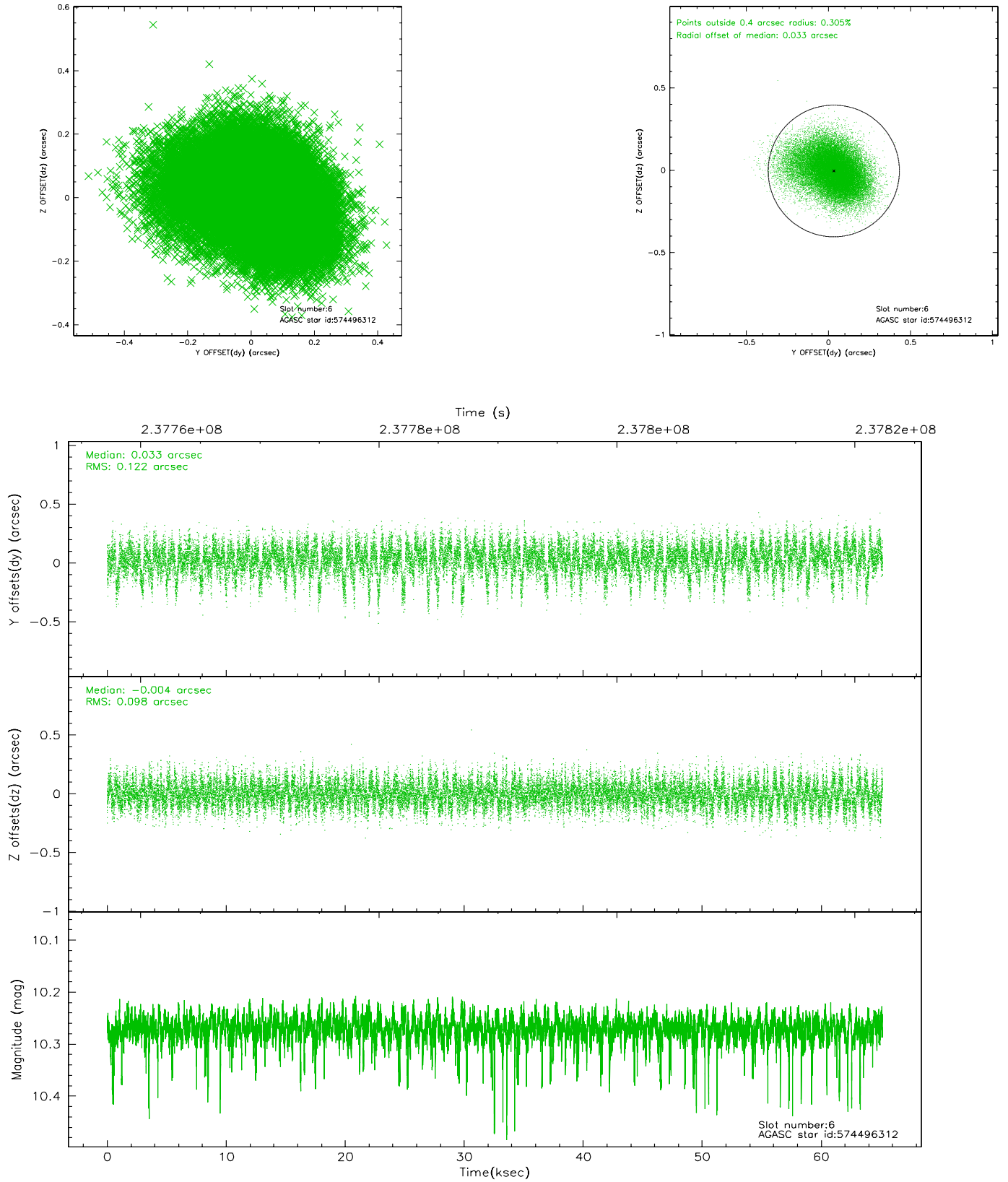
2.4.2 Slot 4



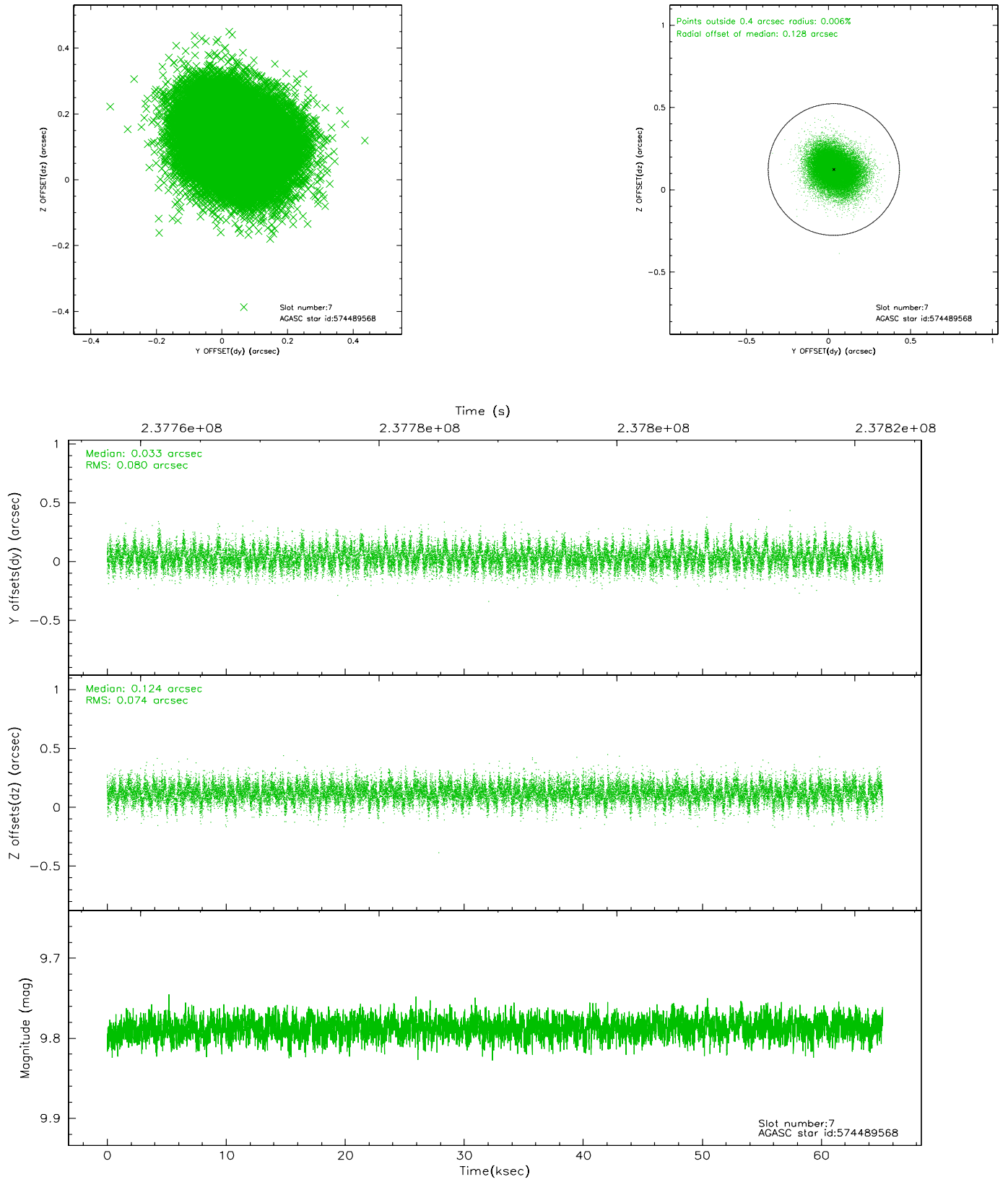
2.4.3 Slot 5



2.4.4 Slot 6

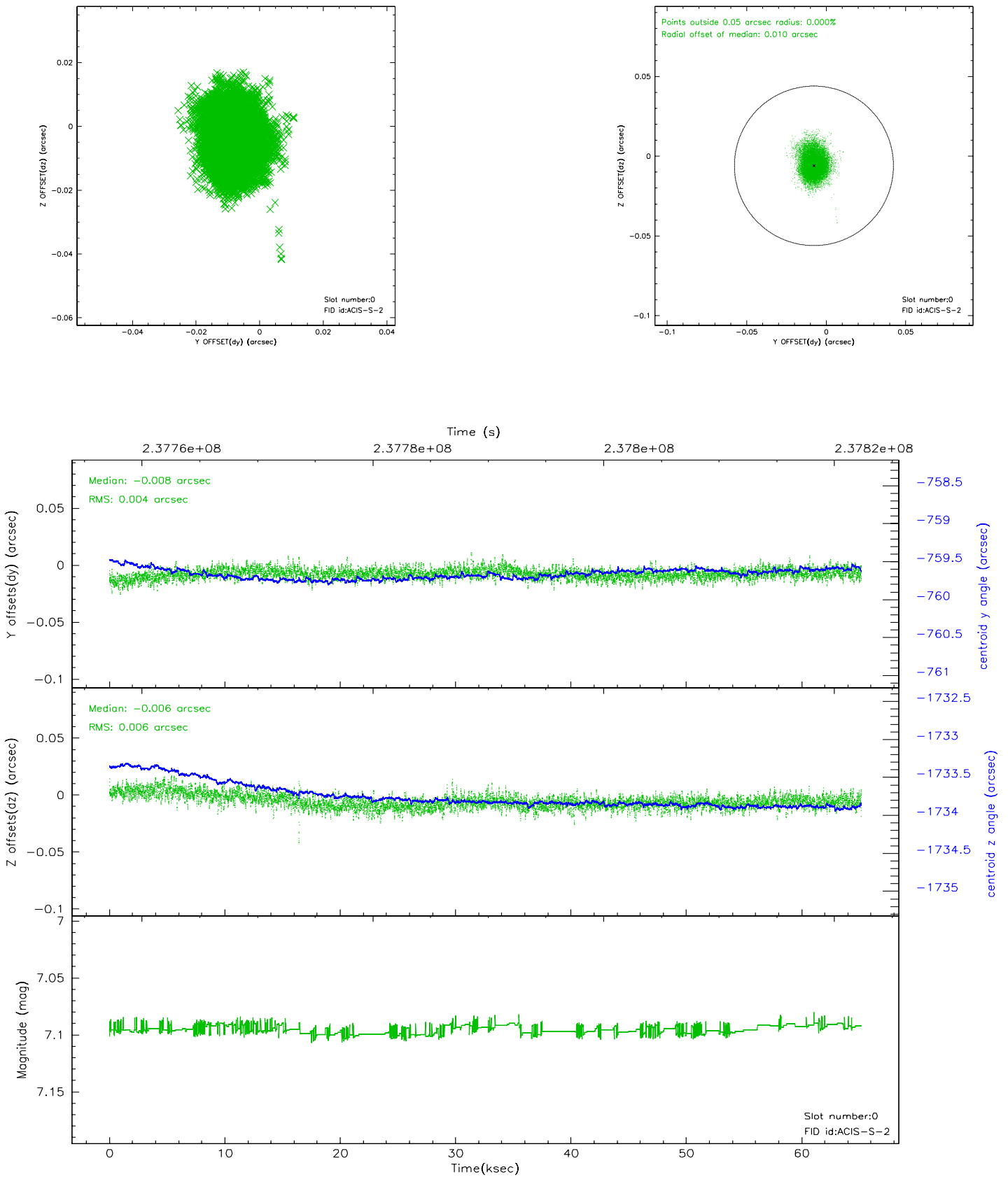


2.4.5 Slot 7

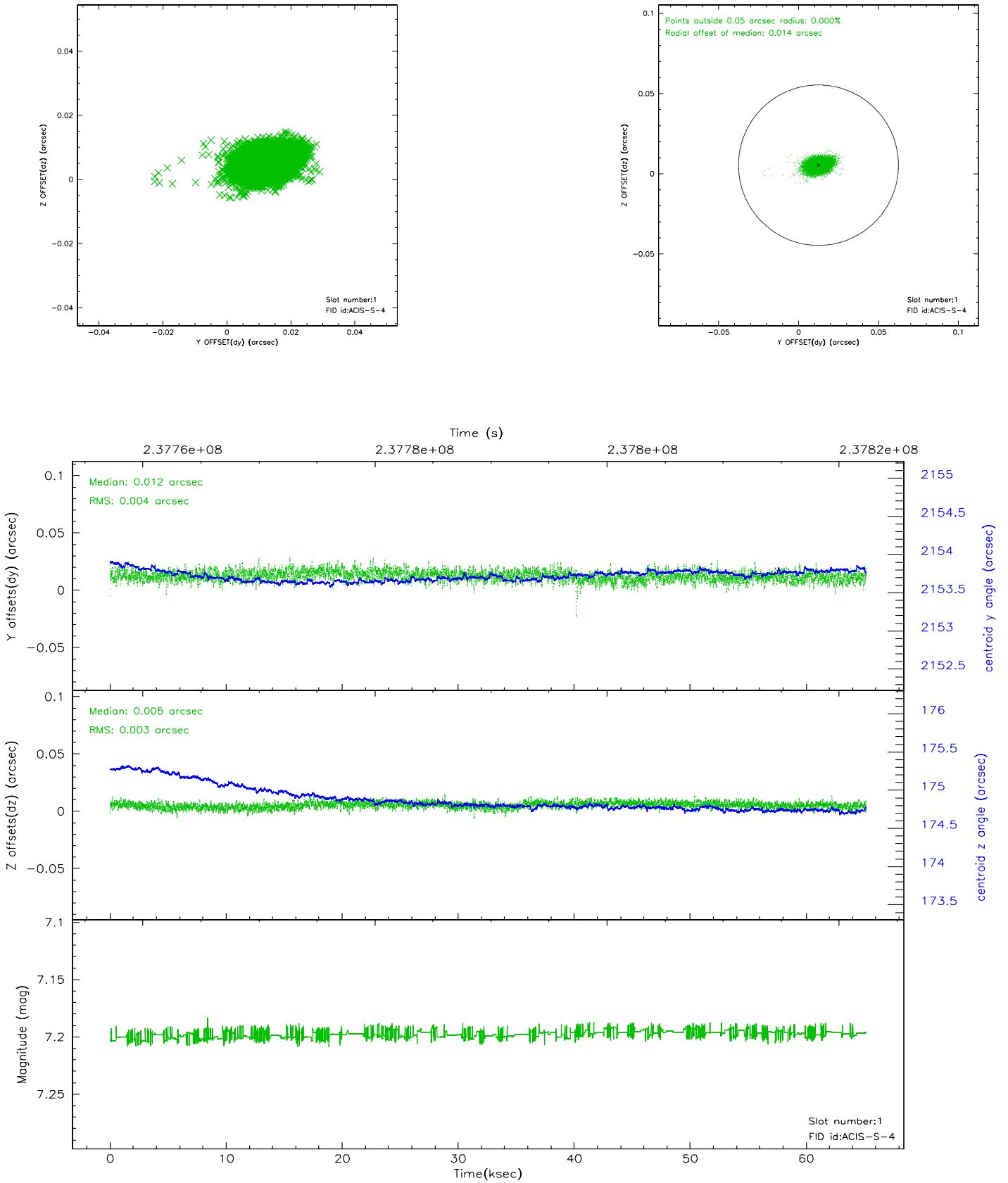


2.5 FID Slots

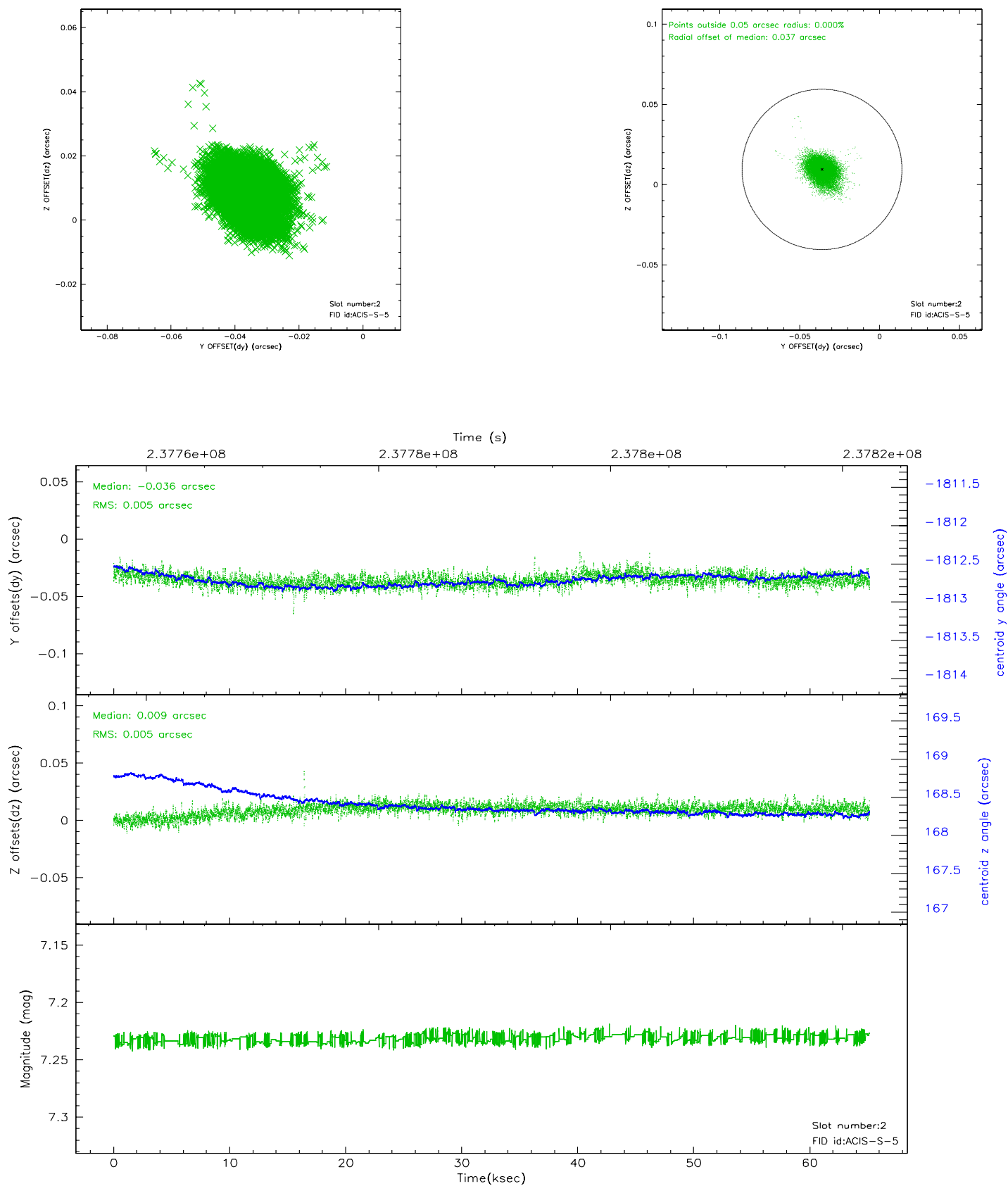
2.5.1 Slot 0



2.5.2 Slot 1

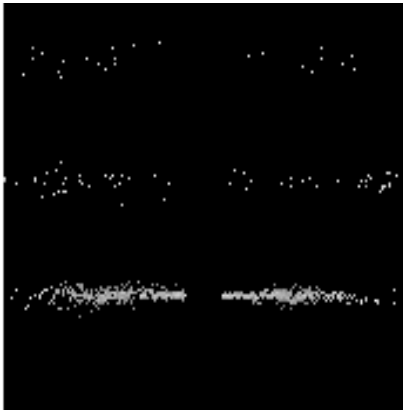


2.5.3 Slot 2

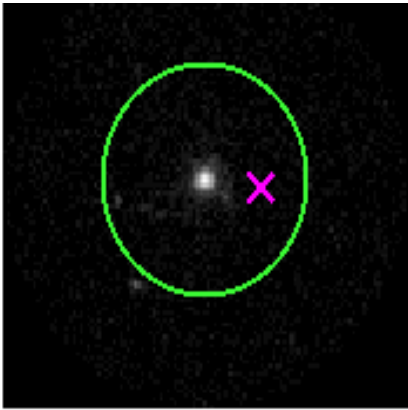


3 Gratings

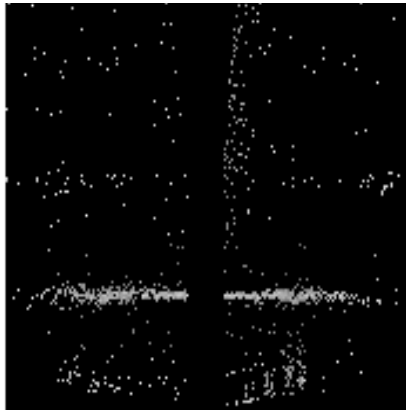
3.1 HEG Arm



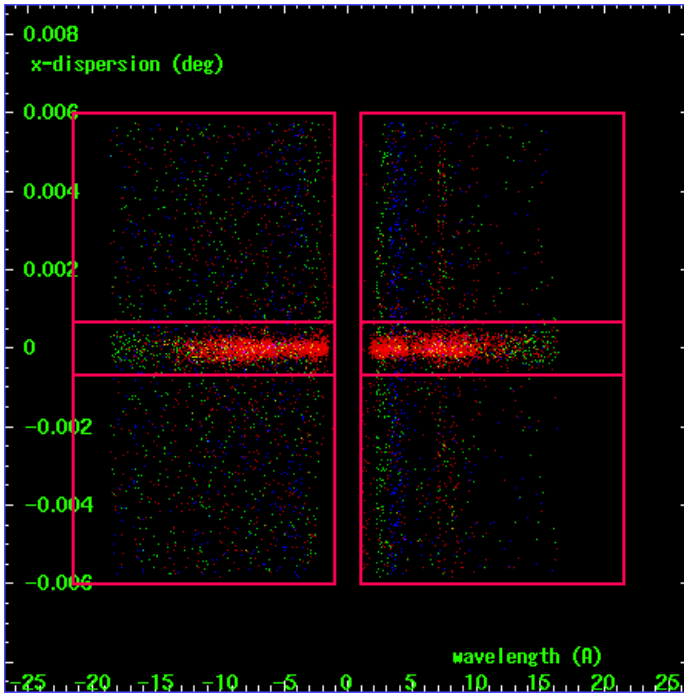
HEG Order Sort 123



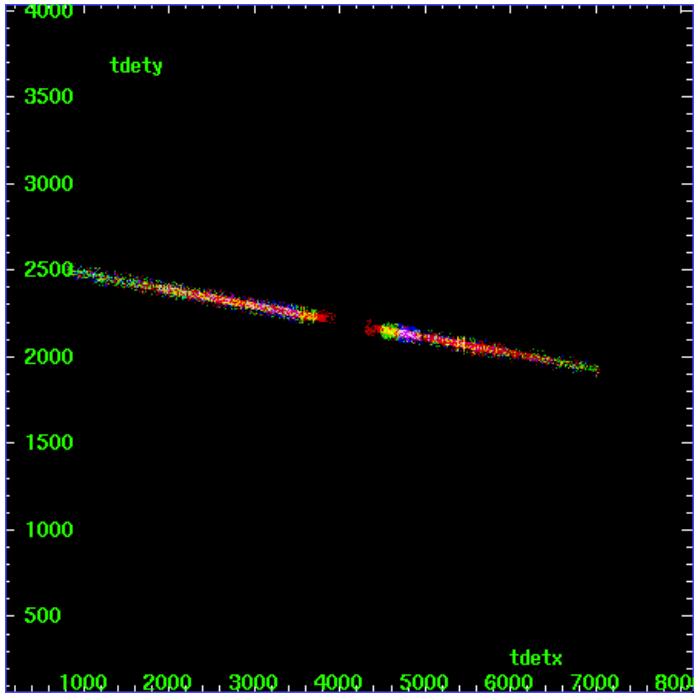
HEG Zero Order



HEG Order Sort ALL

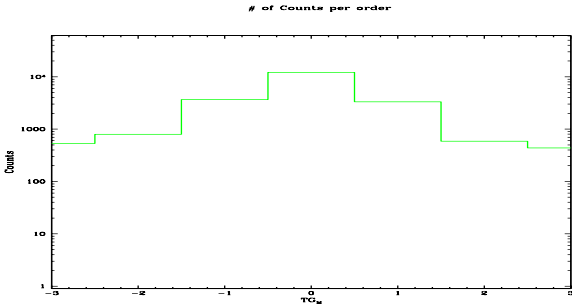


Spot Image HEG

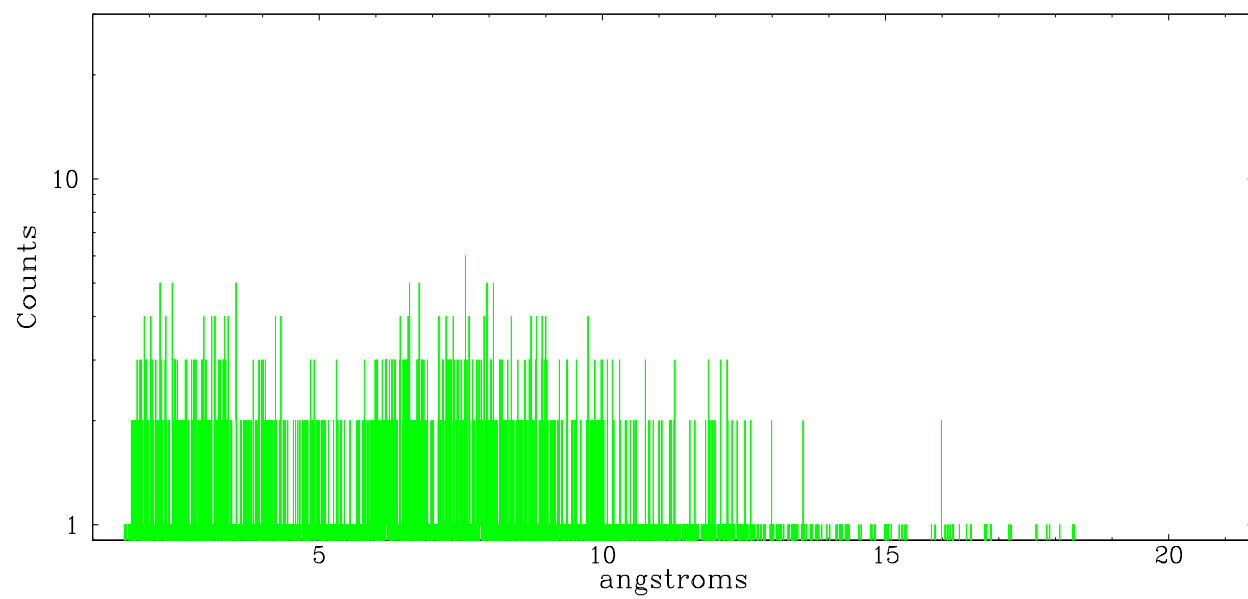


Full Detector HEG

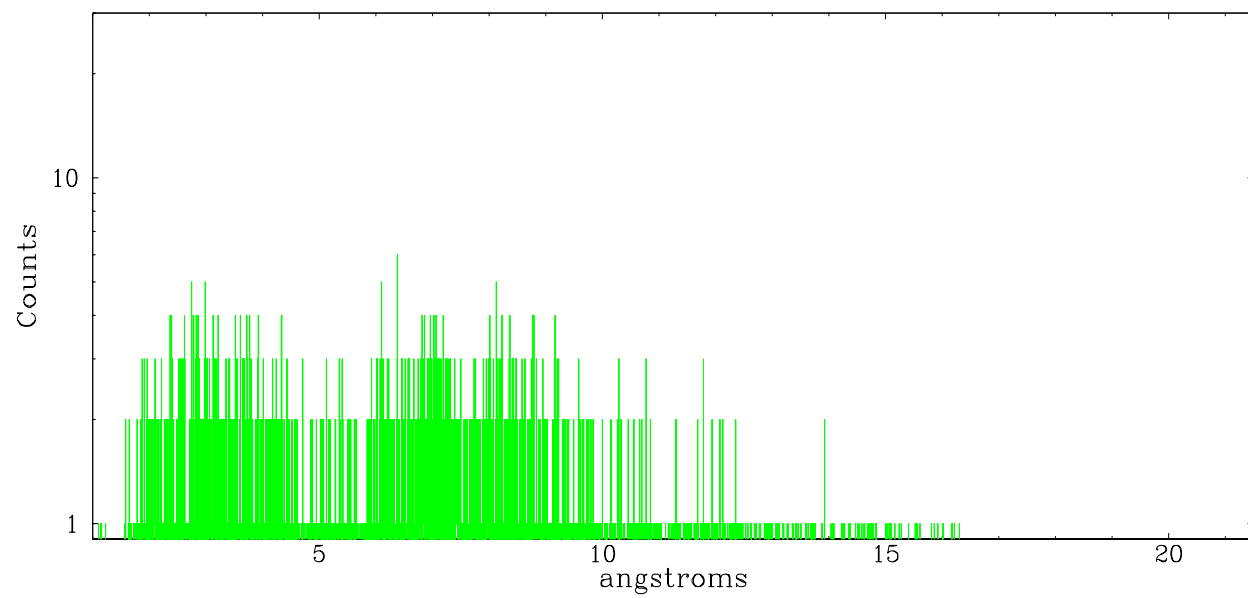
	order -3	order -2	order -1	order 0	order 1	order 2	order 3
Events	533	795	3653	12198	3330	588	436



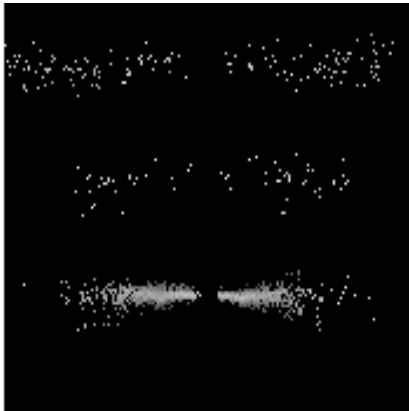
heg order -1



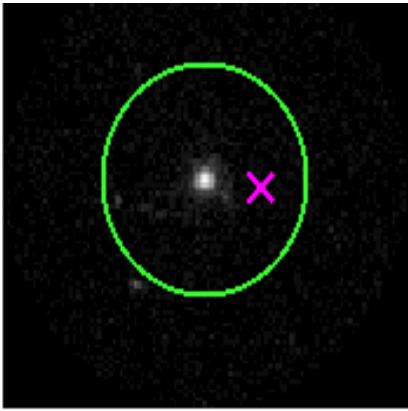
heg order +1



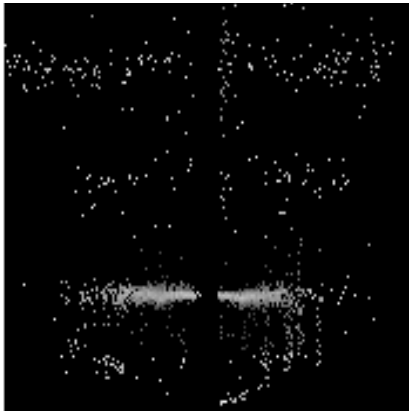
3.2 MEG Arm



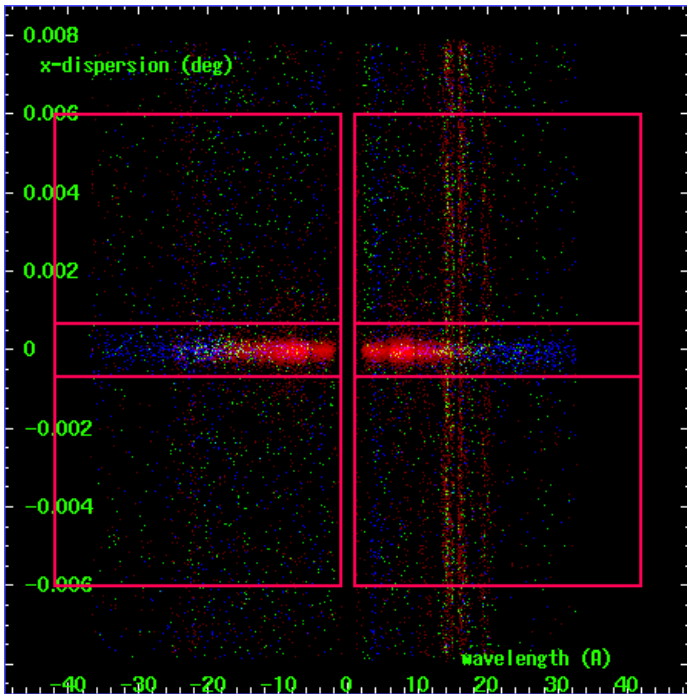
MEG Order Sort 123



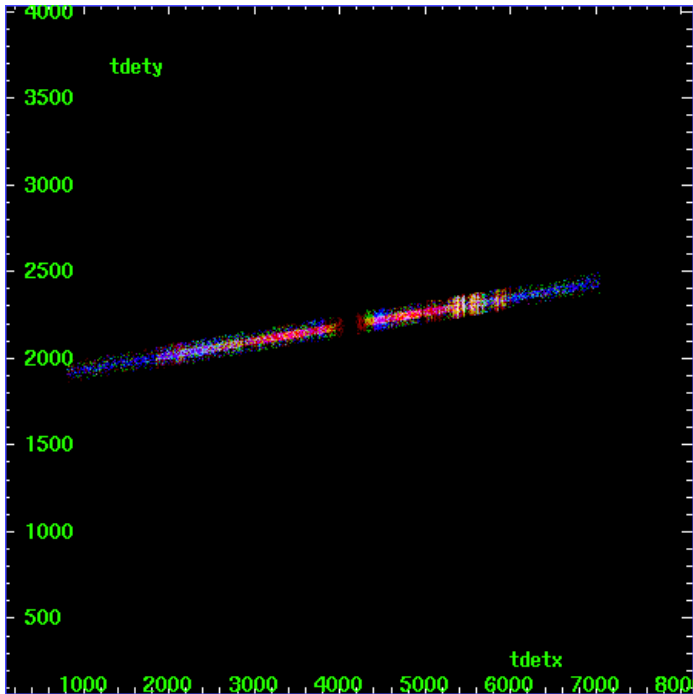
MEG Zero Order



MEG Order Sort ALL

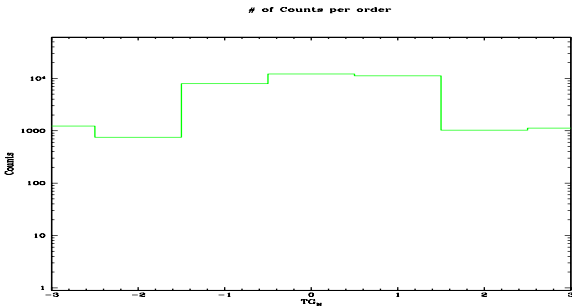


Spot Image MEG

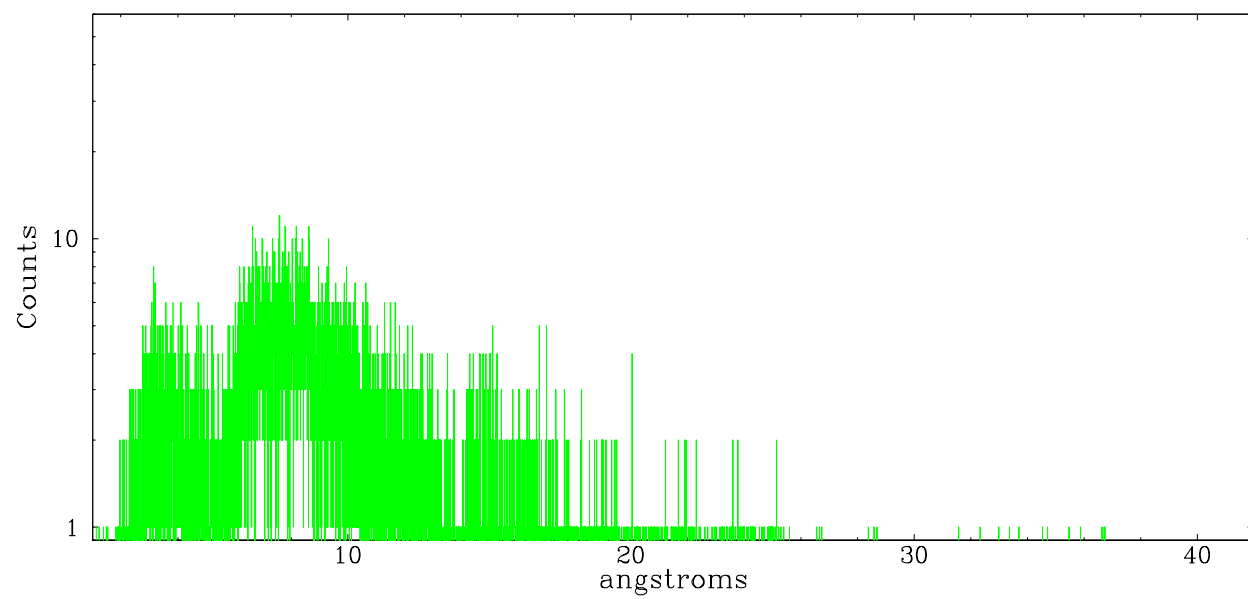


Full Detector MEG

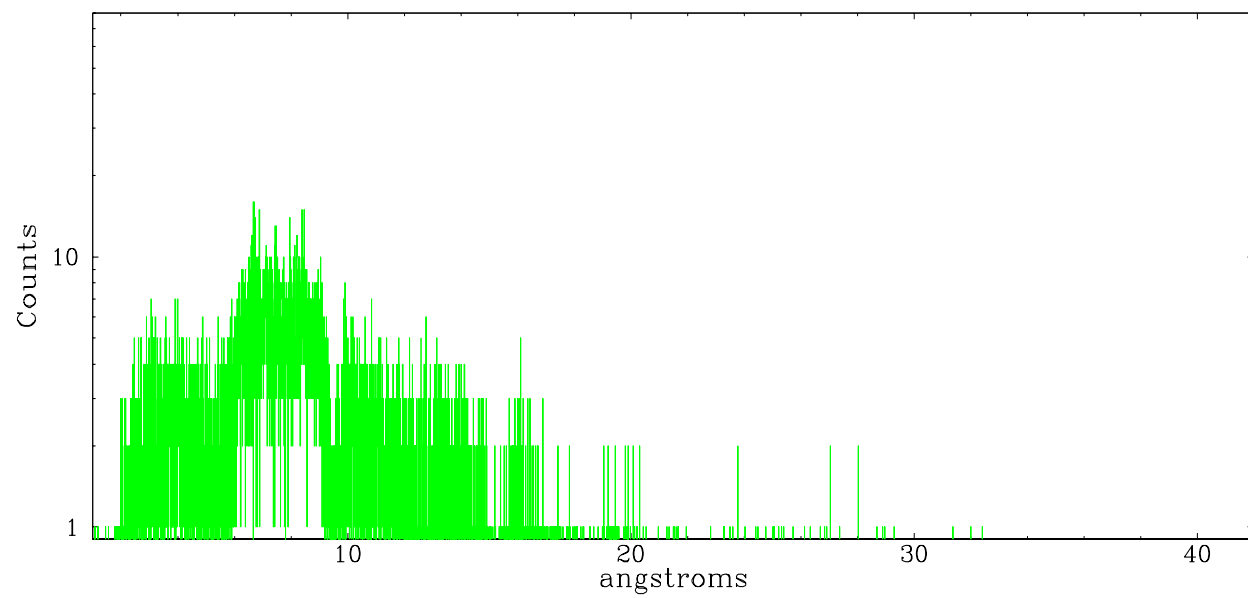
	order -3	order -2	order -1	order 0	order 1	order 2	order 3
Events	1226	752	7957	12198	11199	1024	1120



meg order -1



meg order +1



A Summary

A.1 Status

V&V Scientist	Jen Lauer
V&V Date (YYYY-MM-DD)	2006.03.15
V&V Edition	1
V&V Disposition and Status	OK
V&V Charge Time	64.69119

A.2 Comments