

# V&V Reference Report

## L2 ASCDS Version : 7.6.7.1

Observation 6275 - L2 Version 002  
Chandra X-Ray Center

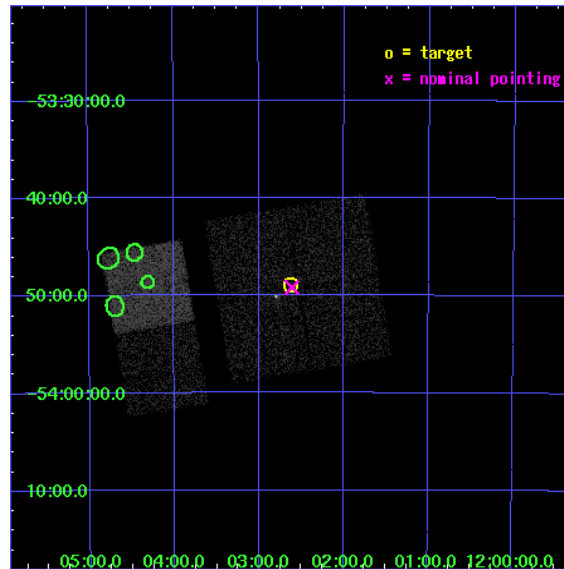
L2 Processing Date : Mar 10 2006

## Contents

<b>1</b>	<b>Front</b>	<b>2</b>
<b>2</b>	<b>OBI</b>	<b>3</b>
2.1	OBI . . . . .	3
2.1.1	Images . . . . .	3
2.1.2	Bias . . . . .	3
2.1.3	Parameters . . . . .	4
2.1.4	Events . . . . .	4
2.2	Compared Parameters . . . . .	5
2.3	Aspect . . . . .	6
2.4	Star Slots . . . . .	9
2.4.1	Slot 3 . . . . .	9
2.4.2	Slot 4 . . . . .	10
2.4.3	Slot 5 . . . . .	11
2.4.4	Slot 6 . . . . .	12
2.4.5	Slot 7 . . . . .	13
2.5	FID Slots . . . . .	14
2.5.1	Slot 0 . . . . .	14
2.5.2	Slot 1 . . . . .	15
2.5.3	Slot 2 . . . . .	16
<b>3</b>	<b>Point Sources</b>	<b>17</b>
<b>A</b>	<b>Summary</b>	<b>18</b>
A.1	Status . . . . .	18
A.2	Comments . . . . .	18

# 1 Front

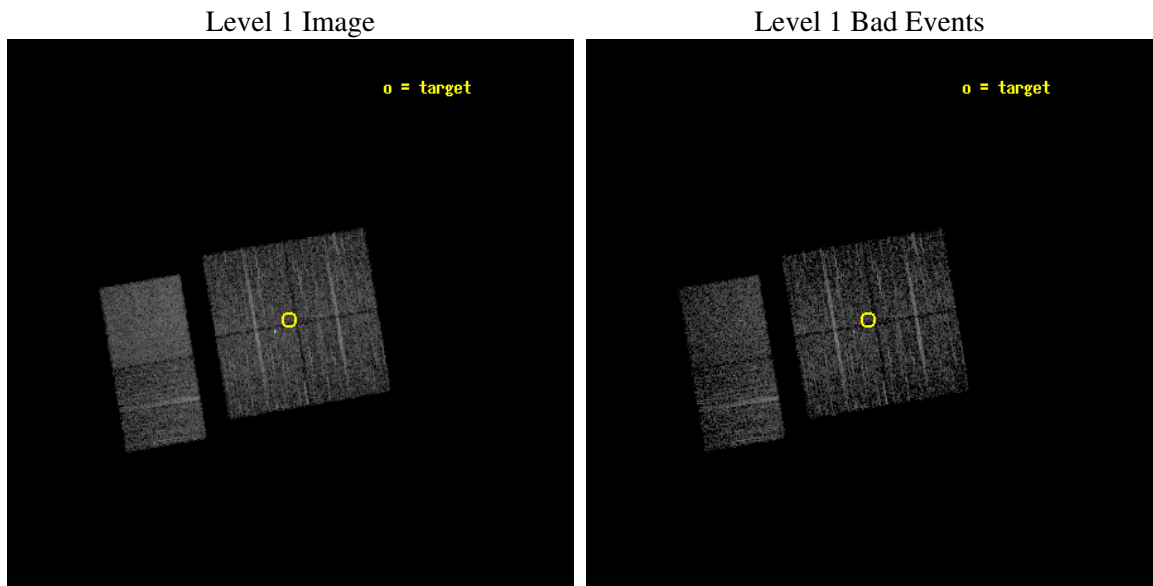
seq_num	701177
obs_id	6275
title	Search for strongly obscured AGNs: support for INTEGRAL all-sky hard X-ray survey
observer	Prof. Rashid Sunyaev
object	IGR J12026-5349
dtcycle	0
cycle	P
ra_targ	180.657083
dec_targ	-53.816
ra_nom	180.652823432
dec_nom	-53.820029422587
roll_nom	260.46473320495
revision	2
ontime	3260.7999878526
livetime	3219.5097749884
ontime0	3260.7999878526
ontime1	3260.7999878526
ontime2	3260.7999878526
ontime3	3260.7999878526
ontime6	3260.7999878526
ontime7	3260.7999878526
l2events	26166



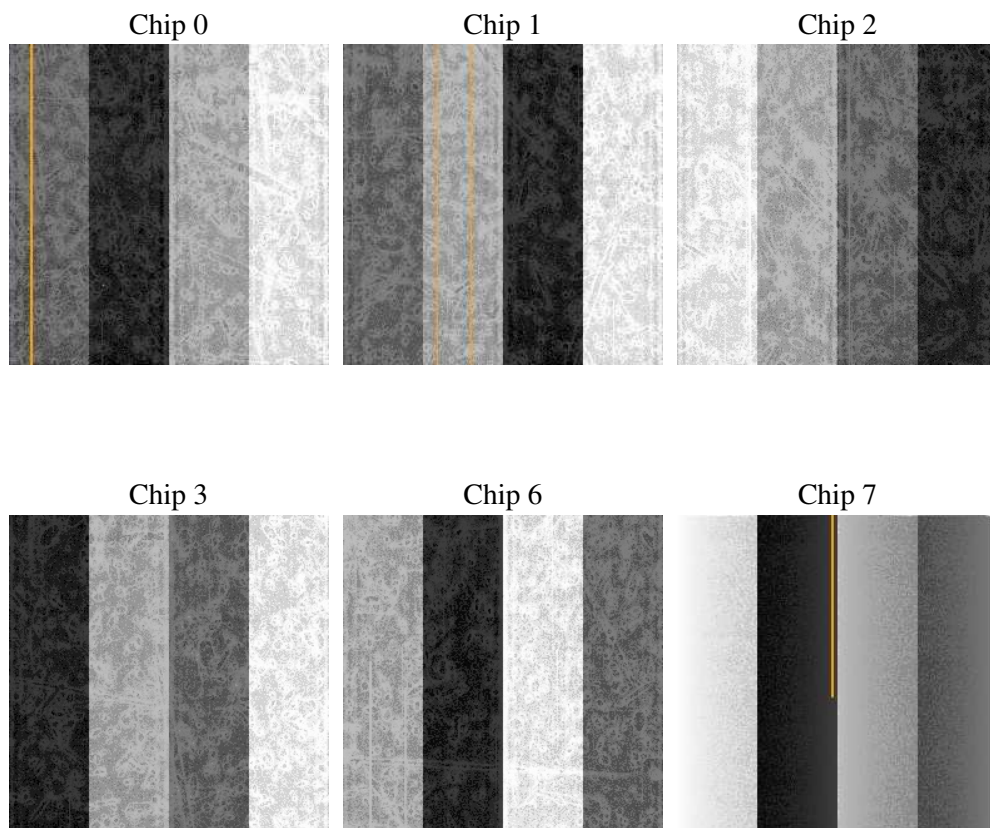
## 2 OBI

### 2.1 OBI

#### 2.1.1 Images



#### 2.1.2 Bias



### 2.1.3 Parameters

obi_num	0
ascdsver	7.6.7.1
caldbver	3.2.1
date	2006-03-10T13:08:43
revision	2

sched_exp_time	3500.000000
ontime	3263.6897887588
ontime0	3263.6897887588
ontime1	3263.6897688508
ontime2	3263.6897887588
ontime3	3263.6897887588
ontime6	3263.6897887588
ontime7	3263.6897887588
l1events	149137

### 2.1.4 Events

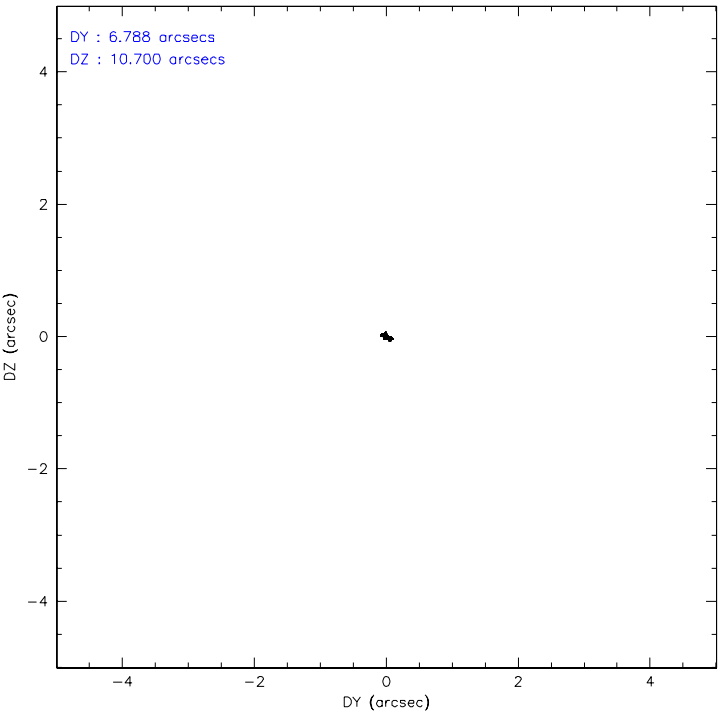
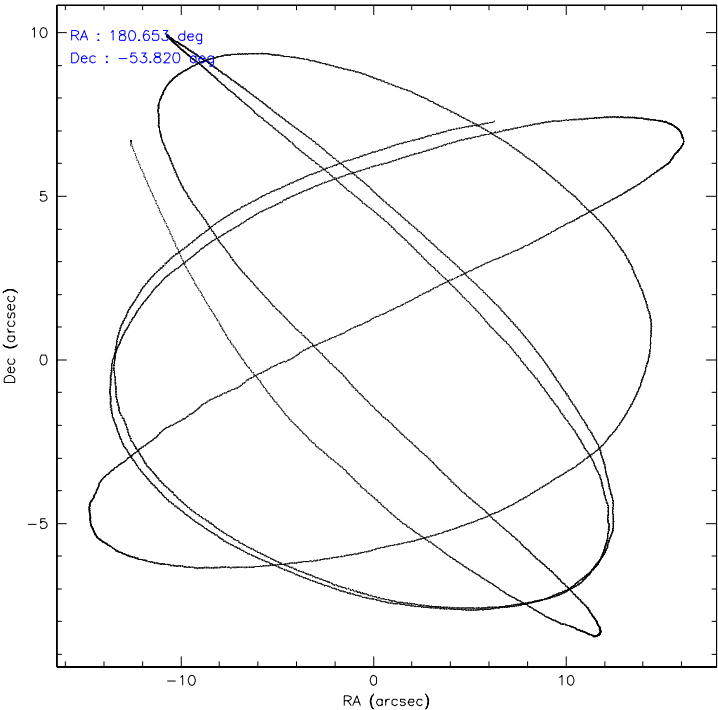
	ccd 0	ccd 1	ccd 2	ccd 3	ccd 6	ccd 7
level 1 events	21506	22215	25827	22728	23514	33347
rejected events	18517	19033	21892	19767	20698	20631
rejected %	86%	85%	84%	86%	88%	61%

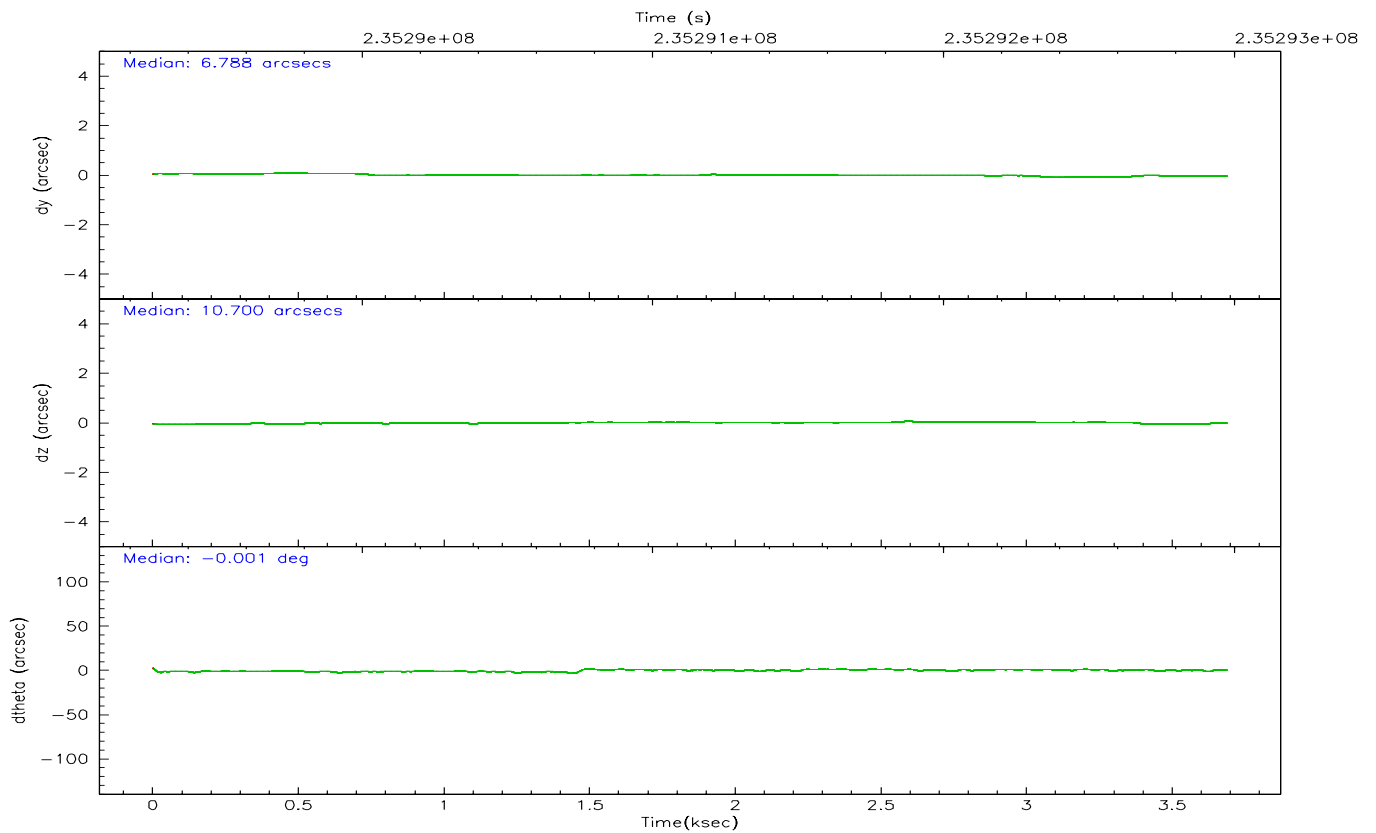
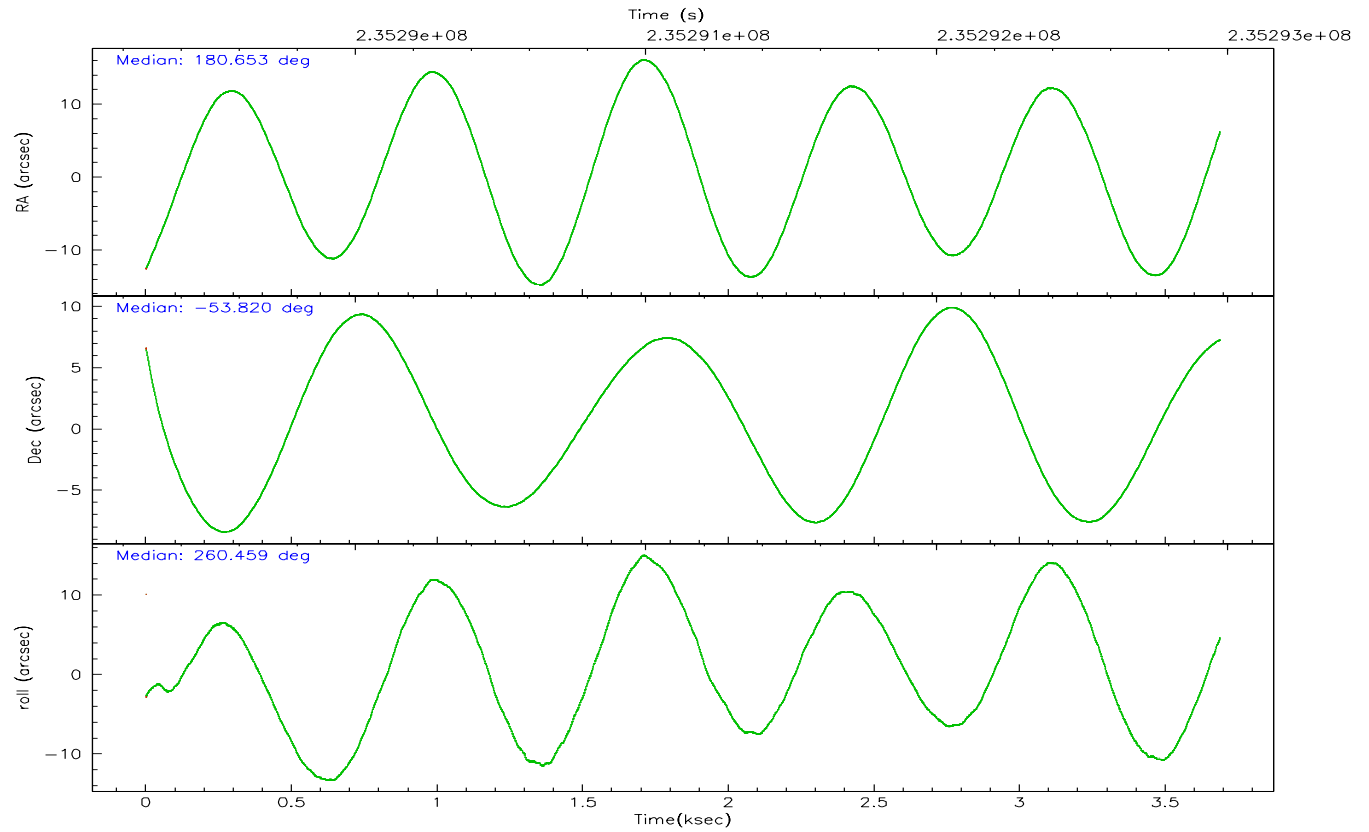
	ccd 0	ccd 1	ccd 2	ccd 3	ccd 6	ccd 7
grade 0 events	1298	1239	1852	1296	1135	697
	6%	5%	7%	5%	4%	2%
grade 1 events	18	11	112	27	12	14
	0%	0%	0%	0%	0%	0%
grade 2 events	633	719	800	602	582	3277
	2%	3%	3%	2%	2%	9%
grade 3 events	311	287	350	284	289	616
	1%	1%	1%	1%	1%	1%
grade 4 events	279	293	355	269	257	593
	1%	1%	1%	1%	1%	1%
grade 5 events	963	1073	1080	1048	1085	2268
	4%	4%	4%	4%	4%	6%
grade 6 events	472	648	579	514	555	7544
	2%	2%	2%	2%	2%	22%
grade 7 events	17532	17945	20699	18688	19599	18338
	81%	80%	80%	82%	83%	54%

## 2.2 Compared Parameters

Parameter	Planned	Actual	Parameter	Planned	Actual
Instrument	ACIS	ACIS	Obspar format version number	6	6
Detector	ACIS-012367	ACIS-012367	Obspar file type	PREDICTED	ACTUAL
Grating	NONE	NONE	Obspar update status	NONE	UPDATED
Data mode	FAINT	FAINT	On-chip summing requested	N	N
Observation mode	POINTING	POINTING	Subarray requested	NONE	NONE
Pointing RA	180.636486	180.6528234319972	Alternating exposures requested	N	N
Pointing Dec	-53.794299	-53.82002942258726	Primary exposure time	0.000000	3.2
Pointing Roll	260.242841	260.4647332049462			
SIM focus pos (mm)	-0.782348	-0.7809083437167272			
SIM defocus (mm)	0	0.001439871863259334			
SIM translation stage pos (mm)	-233.592463	-233.5874344608287			
SIM translation stage offset (mm)	0	-0.005018542100998502			
Observation start time	235289470.184000	235288605.96374			
Observation start date	2005-06-16T06:10:06	2005-06-16T05:56:45			
Observation end time	235292970.184000	235293608.98897			
Observation end date	2005-06-16T07:08:26	2005-06-16T07:20:08			
Read mode	TIMED	TIMED			

2.3 Aspect





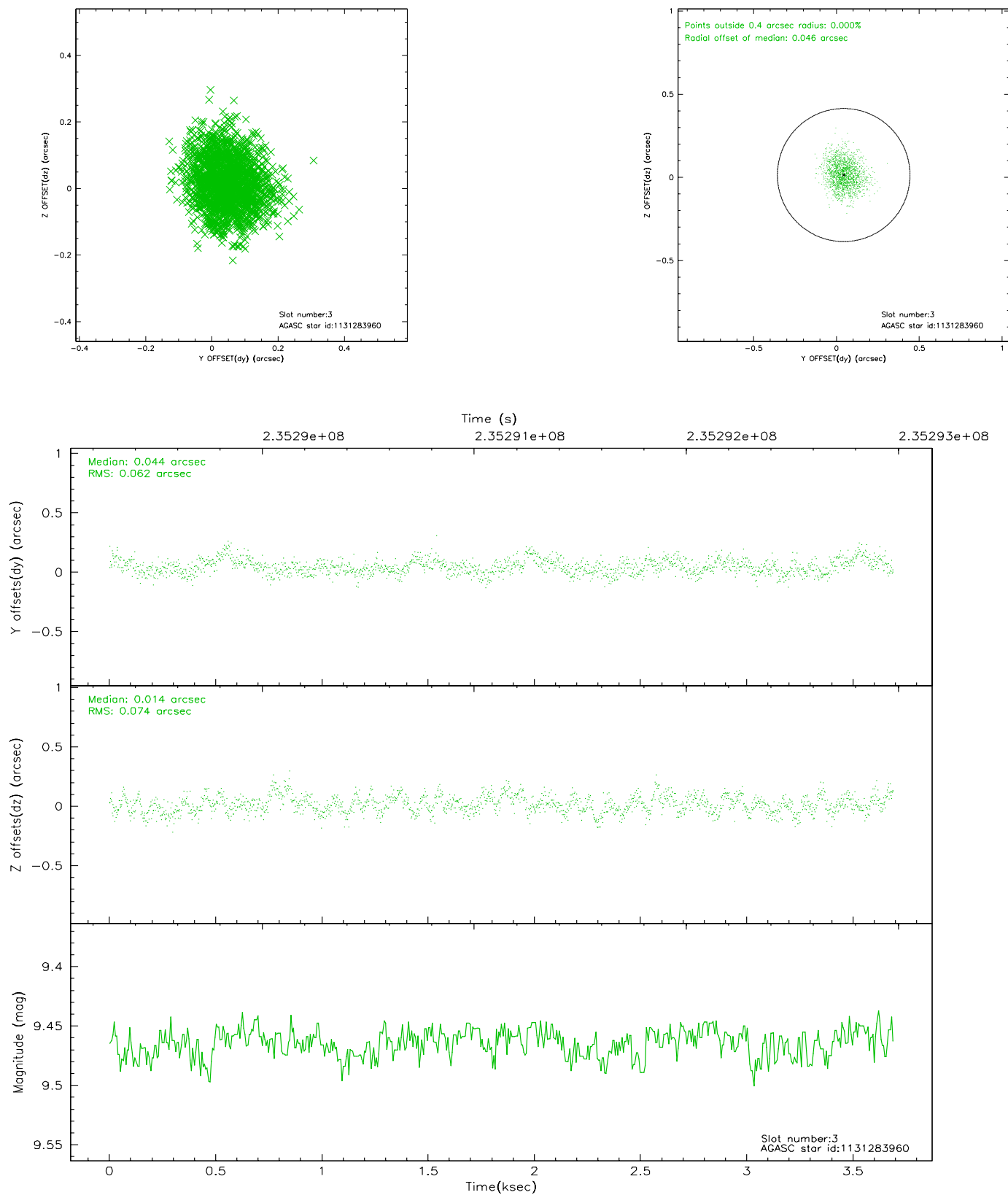
### Slot Statistics

slot	status	id	mag	n_pts	med_dy	med_dz	dr1	dr2	ra	dec	mean_y	mean_z
0	FID	ACIS-I-1	7.24	900	-0.016	0.007	0.015	0.026	0.000000	0.000000	932.87	-834.19
1	FID	ACIS-I-4	7.18	899	0.090	0.025	0.013	0.021	0.000000	0.000000	2153.99	1064.77
2	FID	ACIS-I-5	7.23	900	-0.171	0.037	0.007	0.012	0.000000	0.000000	-1813.07	1064.62
3	GUIDE	1131283960	9.46	1797	0.044	0.014	0.103	0.165	179.879225	-53.627479	-309.37	-1693.48
4	GUIDE	1131289728	9.87	1800	0.054	0.113	0.127	0.209	179.887474	-53.280026	-1543.31	-1902.18
5	GUIDE	1131418344	6.90	1800	0.046	-0.054	0.072	0.104	181.505909	-54.257762	1344.21	2085.93
6	GUIDE	1131423304	8.57	1798	-0.062	0.028	0.062	0.103	180.011927	-54.278632	1947.16	-995.81
7	GUIDE	1131430184	6.96	1799	-0.091	-0.101	0.058	0.093	180.967486	-53.498202	-1168.28	517.56

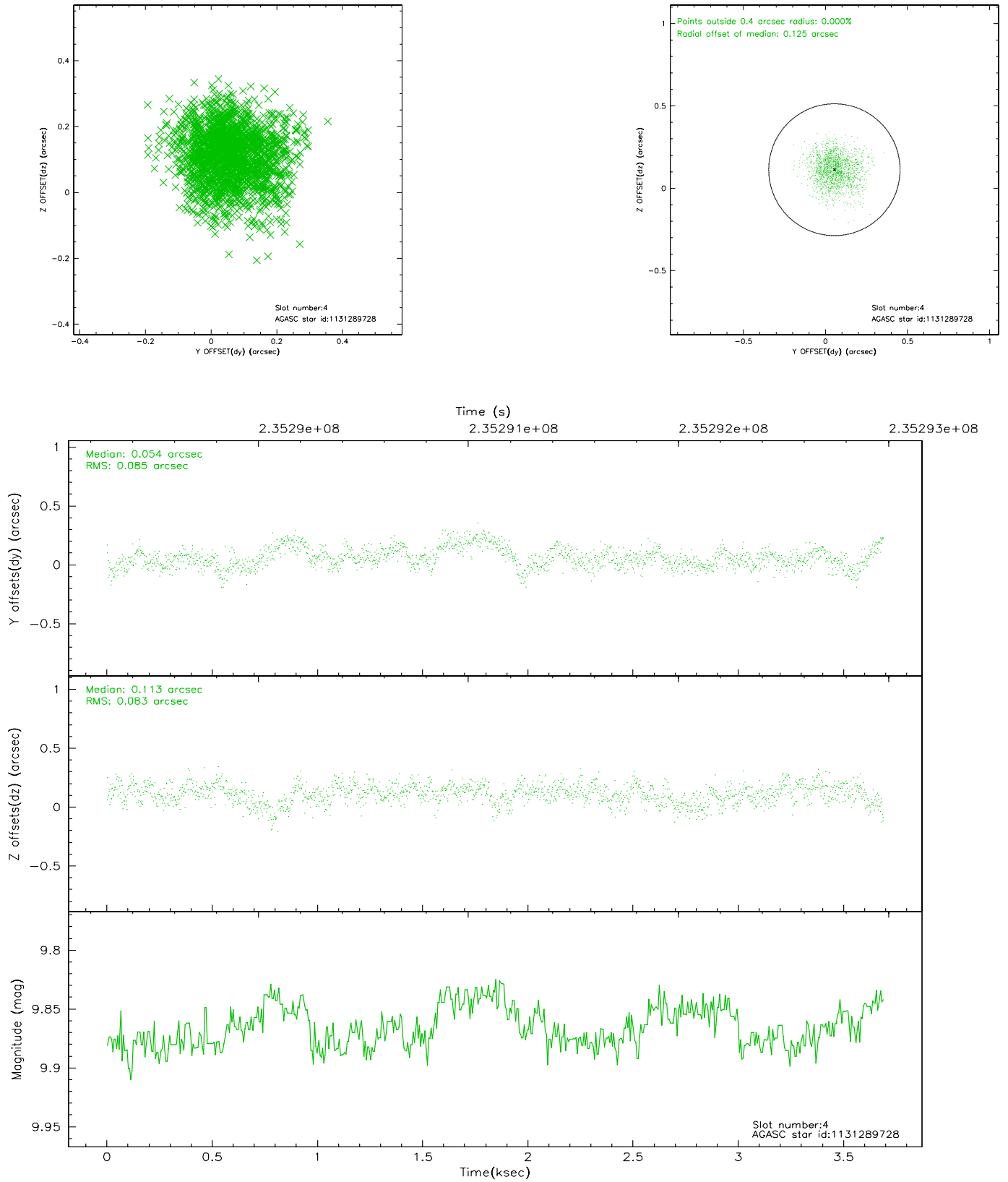


## 2.4 Star Slots

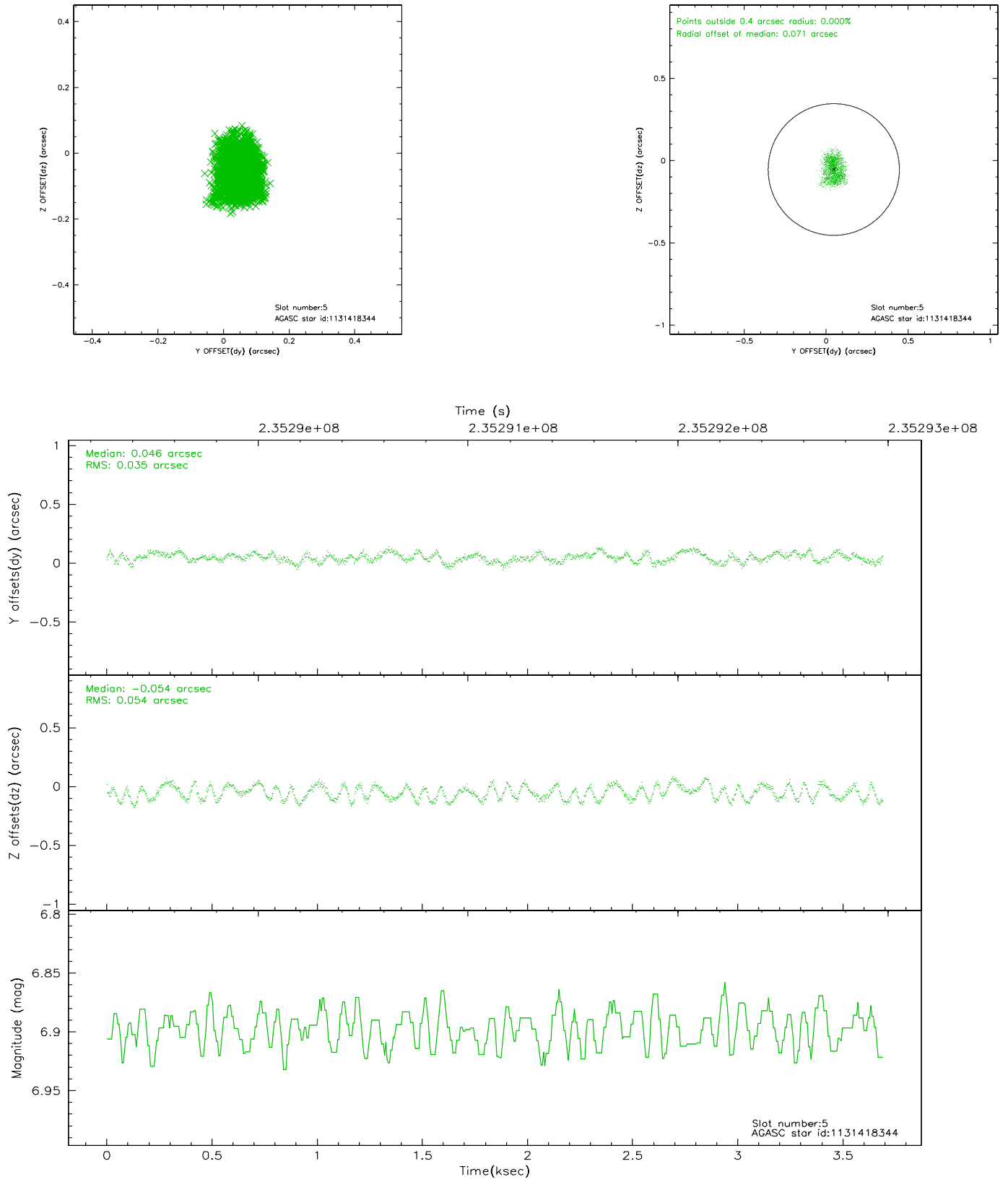
### 2.4.1 Slot 3



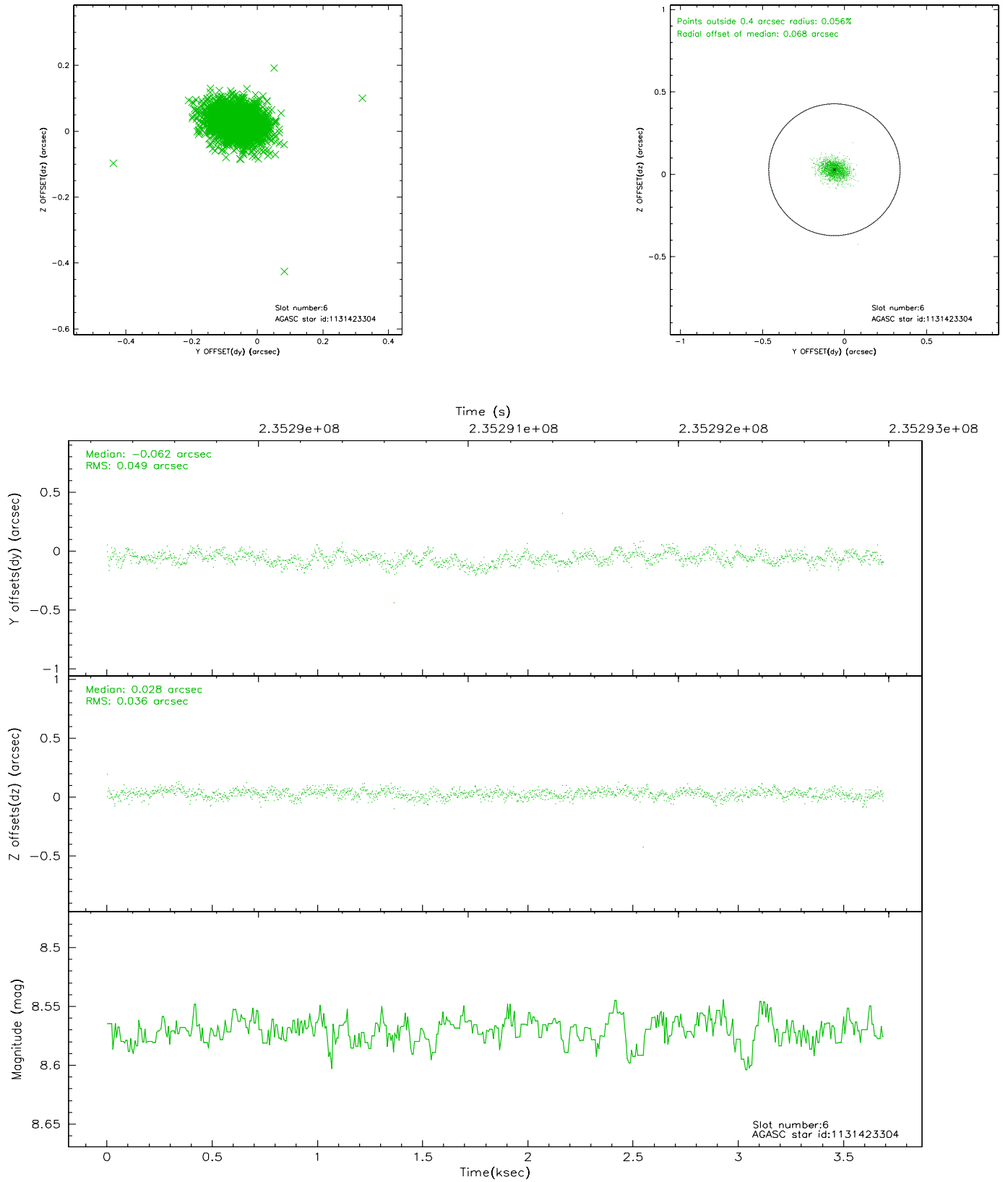
## 2.4.2 Slot 4



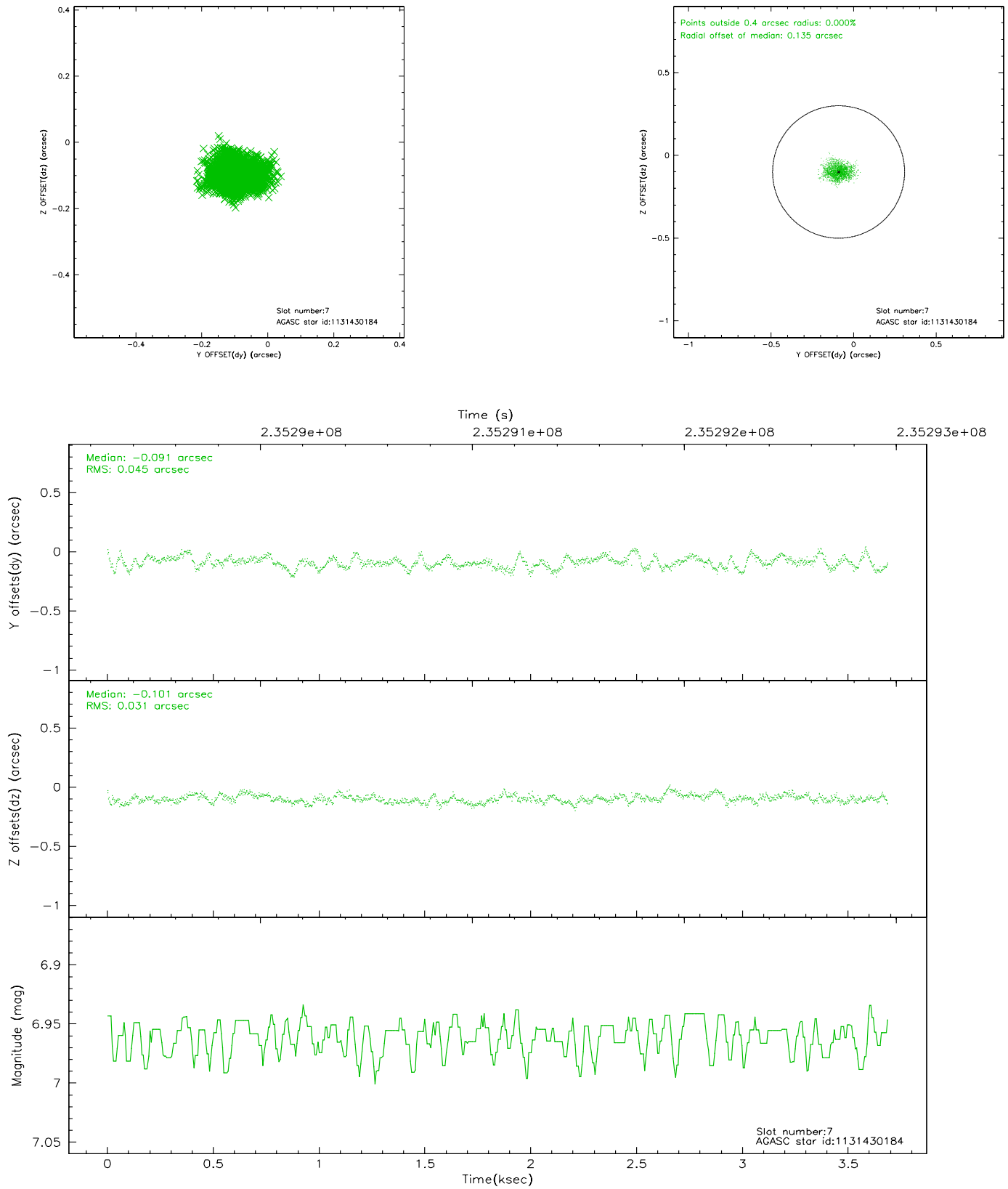
### 2.4.3 Slot 5



## 2.4.4 Slot 6

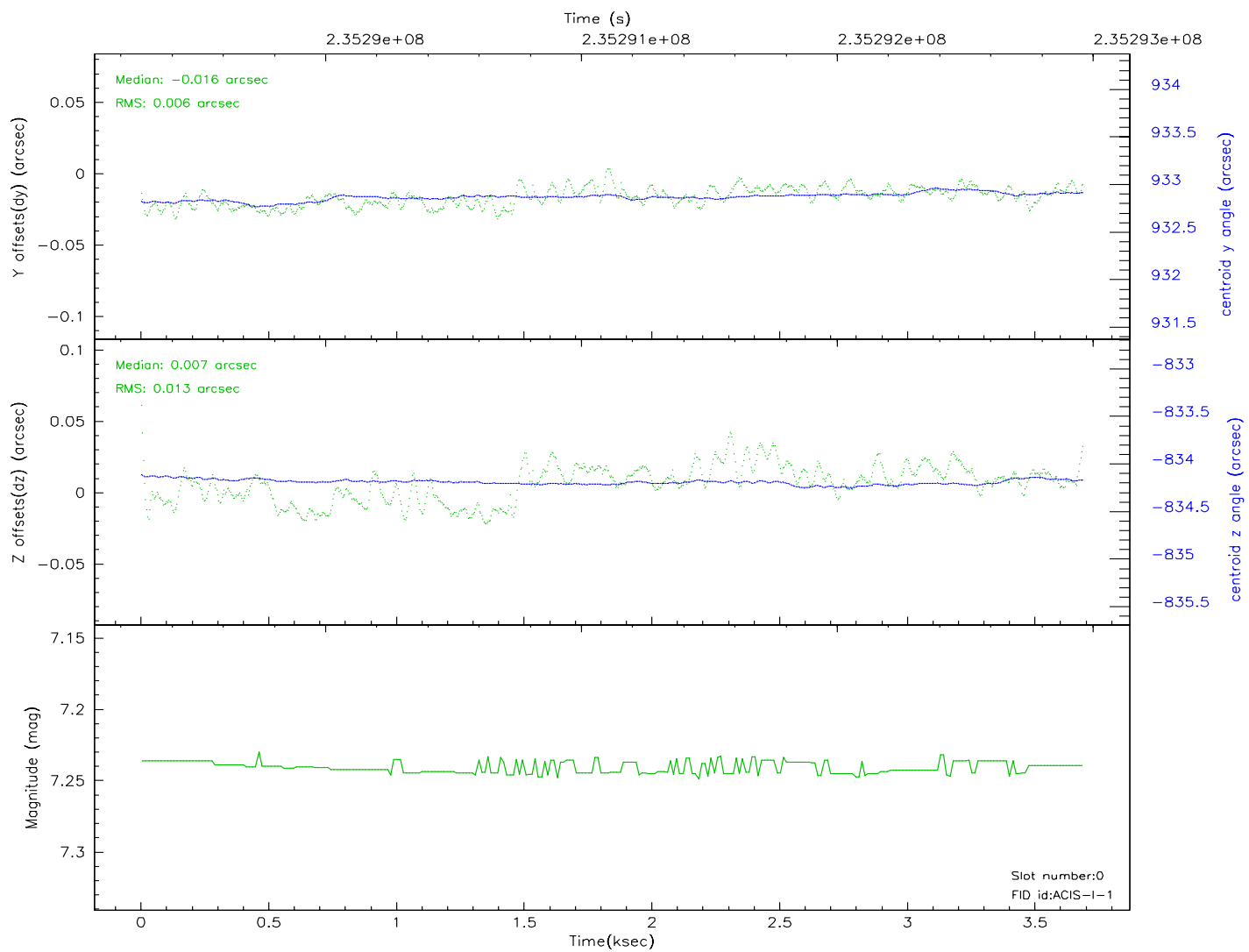
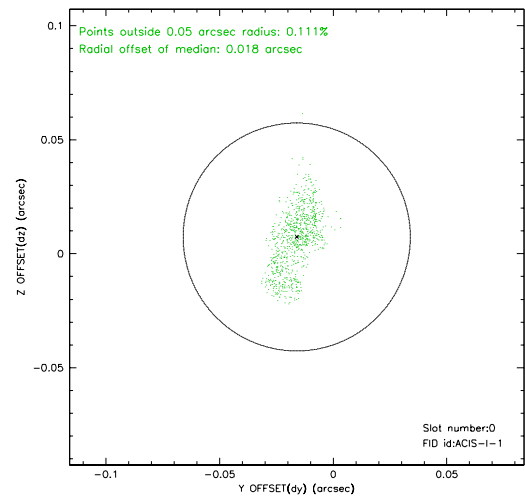
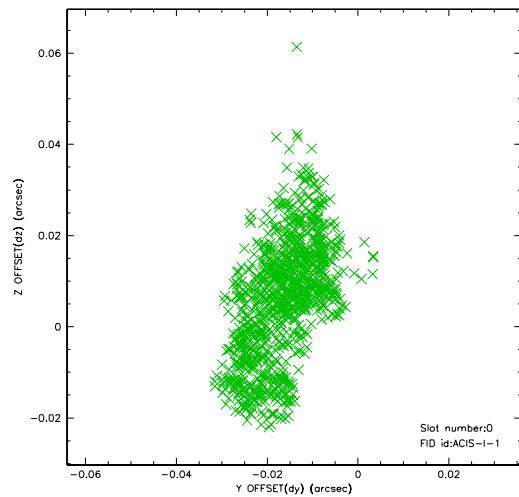


## 2.4.5 Slot 7

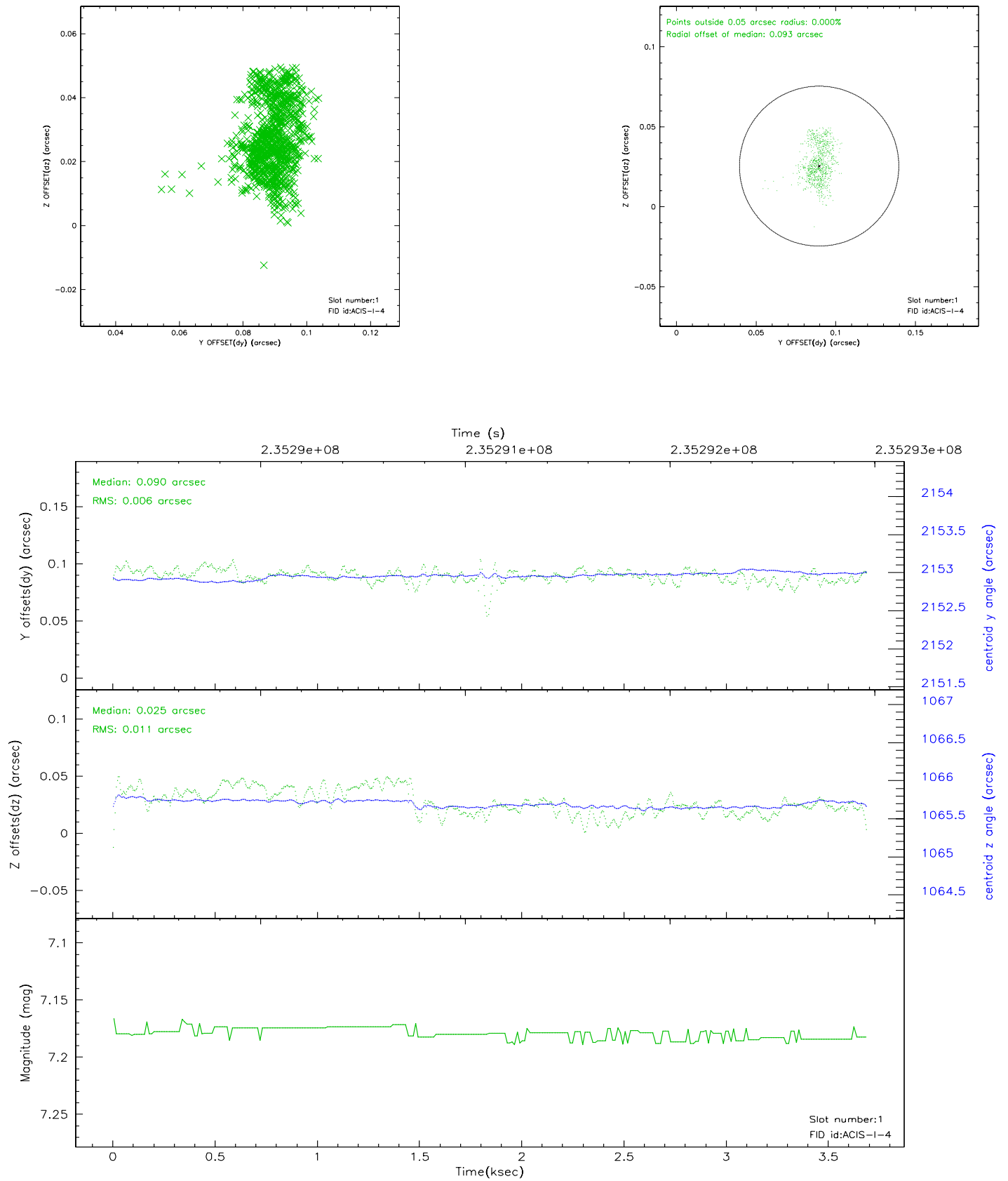


## 2.5 FID Slots

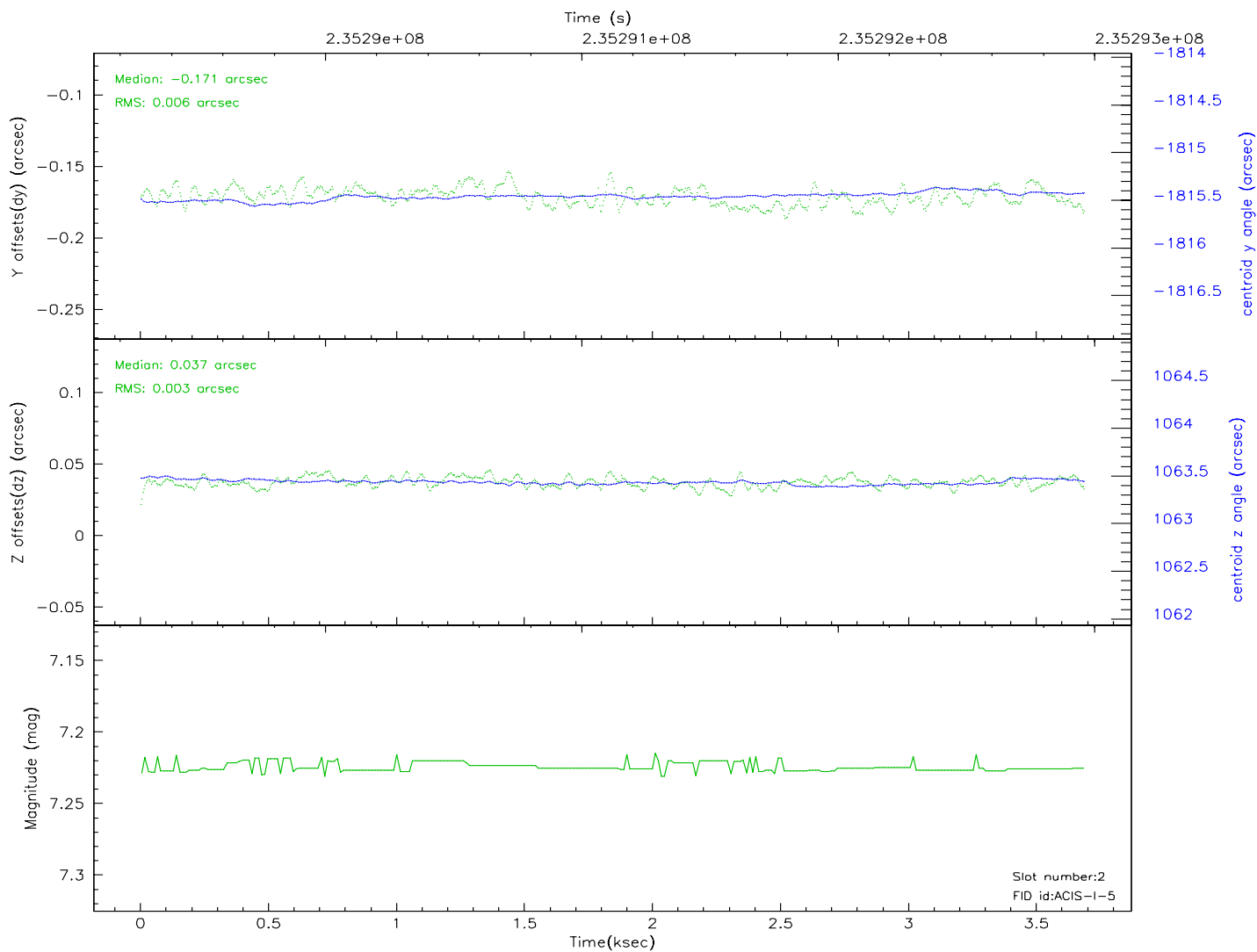
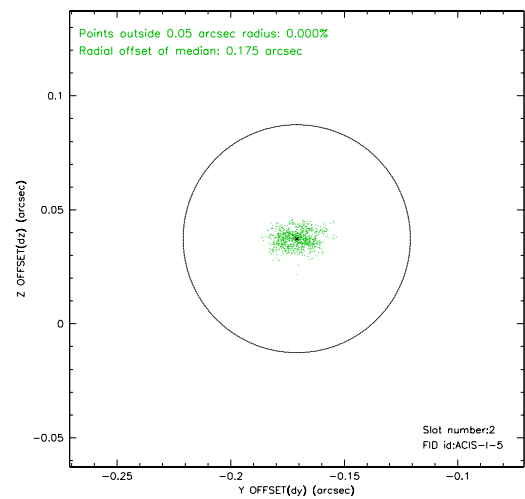
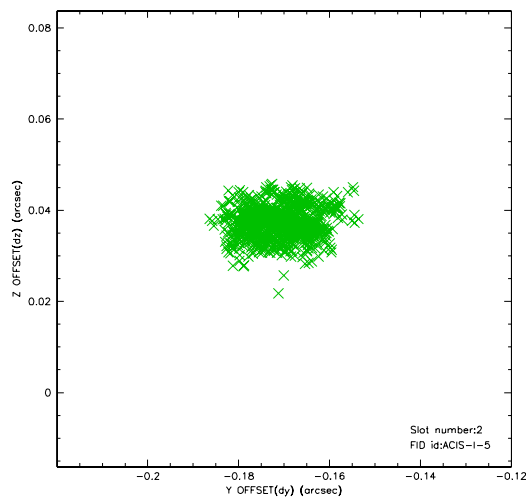
### 2.5.1 Slot 0



## 2.5.2 Slot 1



### 2.5.3 Slot 2





### 3 Point Sources

18.52 arcmin



## A Summary

### A.1 Status

V&V Scientist	Jen Lauer
V&V Date (YYYY-MM-DD)	2006.03.10
V&V Edition	1
V&V Disposition and Status	OK
V&V Charge Time	3.260799

### A.2 Comments