

V&V Reference Report

L2 ASCDS Version : 7.6.7.1

Observation 5731 - L2 Version 002
Chandra X-Ray Center

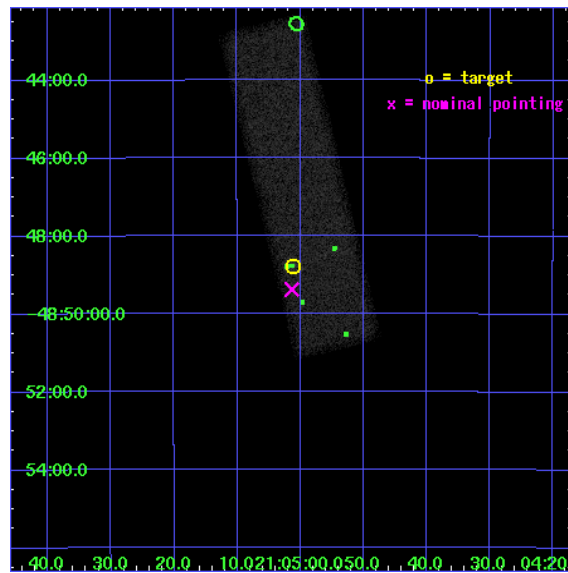
L2 Processing Date : Apr 8 2006

Contents

1	Front	2
2	OBI	3
2.1	OBI	3
2.1.1	Images	3
2.1.2	Bias	3
2.1.3	Parameters	4
2.1.4	Events	4
2.2	Compared Parameters	5
2.3	Aspect	6
2.4	Star Slots	9
2.4.1	Slot 3	9
2.4.2	Slot 4	10
2.4.3	Slot 5	11
2.4.4	Slot 6	12
2.4.5	Slot 7	13
2.5	FID Slots	14
2.5.1	Slot 0	14
2.5.2	Slot 1	15
2.5.3	Slot 2	16
3	Point Sources	17
A	Summary	18
A.1	Status	18
A.2	Comments	18

1 Front

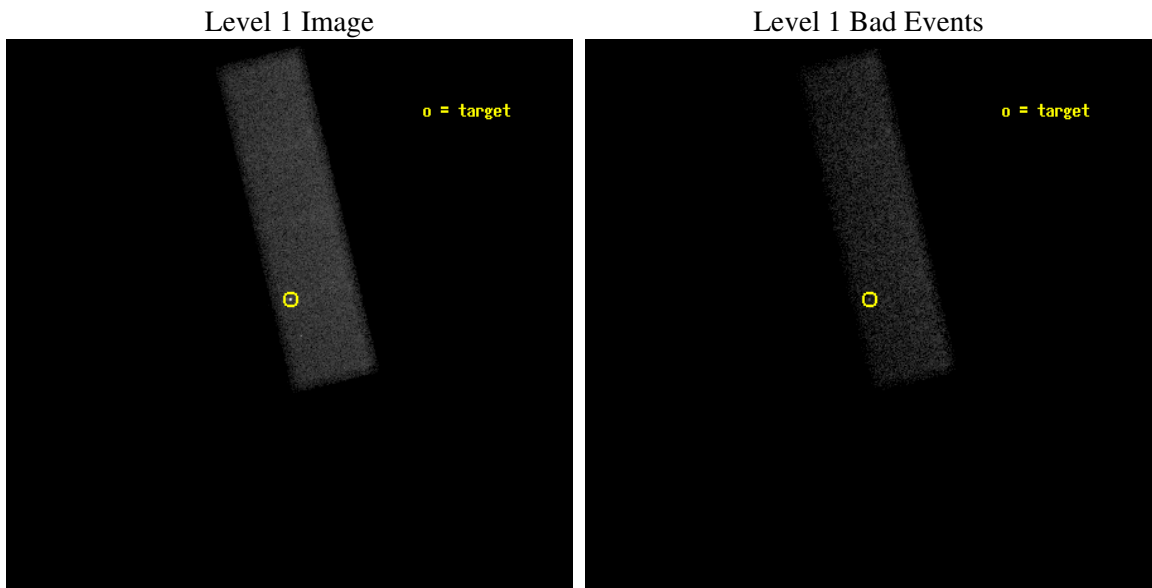
seq_num	701153
obs_id	5731
title	A Study of the Physics of Extended Relativistic X-ray Jets, Discovered in our Chandra Survey
observer	Dr. Jonathan Gelbord
object	PKS 2101-490
dtcycle	0
cycle	P
ra_targ	316.255
dec_targ	-48.812917
ra_nom	316.25568243266
dec_nom	-48.82282021386
roll_nom	256.41600093294
revision	2
ontime	44164.800658107
livetime	42009.702899369
ontime7	44164.800658107
l2events	52302



2 OBI

2.1 OBI

2.1.1 Images



2.1.2 Bias

Chip 7



2.1.3 Parameters

obi_num	1
ascdsver	7.6.7.1
caldbver	3.2.1
date	2006-04-08T21:41:24
revision	2

sched_exp_time	44000.000000
ontime	44579.611887395
ontime7	44579.611887395
l1events	120538

2.1.4 Events

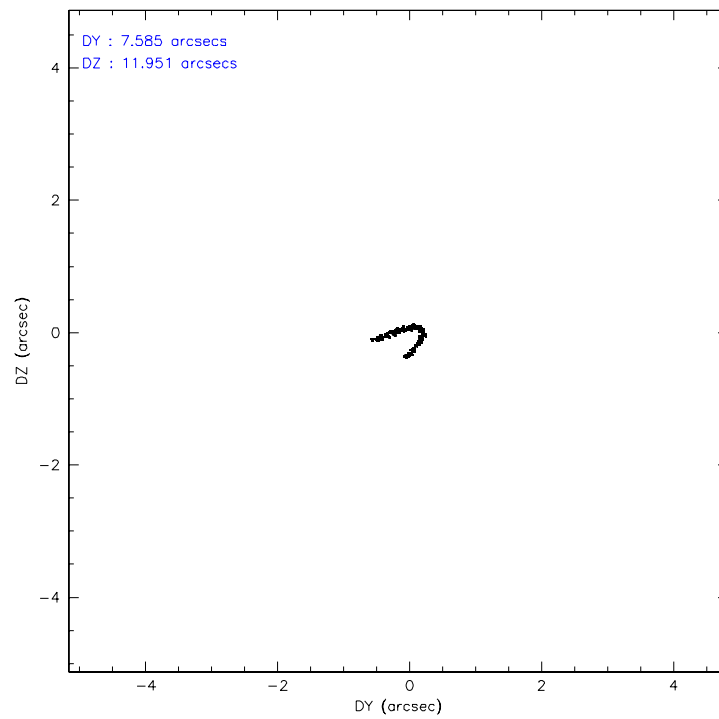
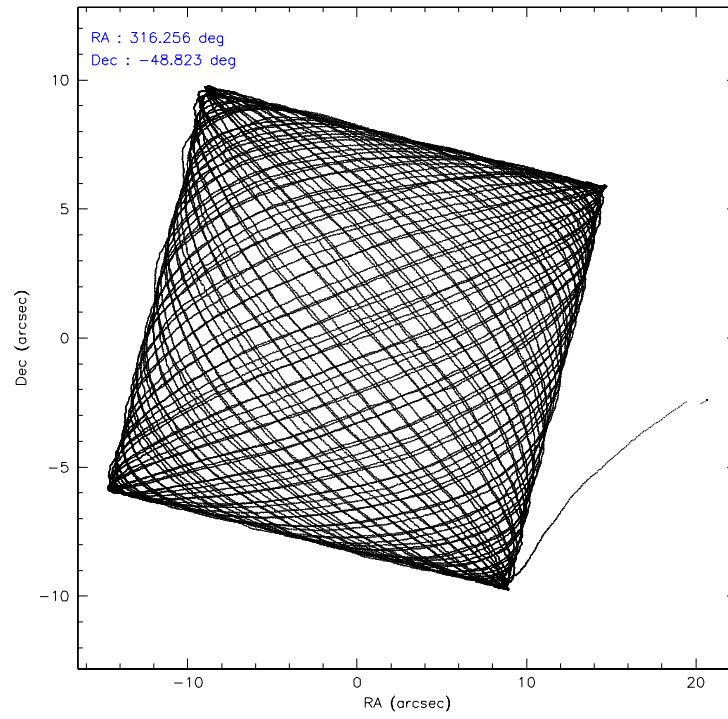
	ccd 7
level 1 events	120538
rejected events	66794
rejected %	55%

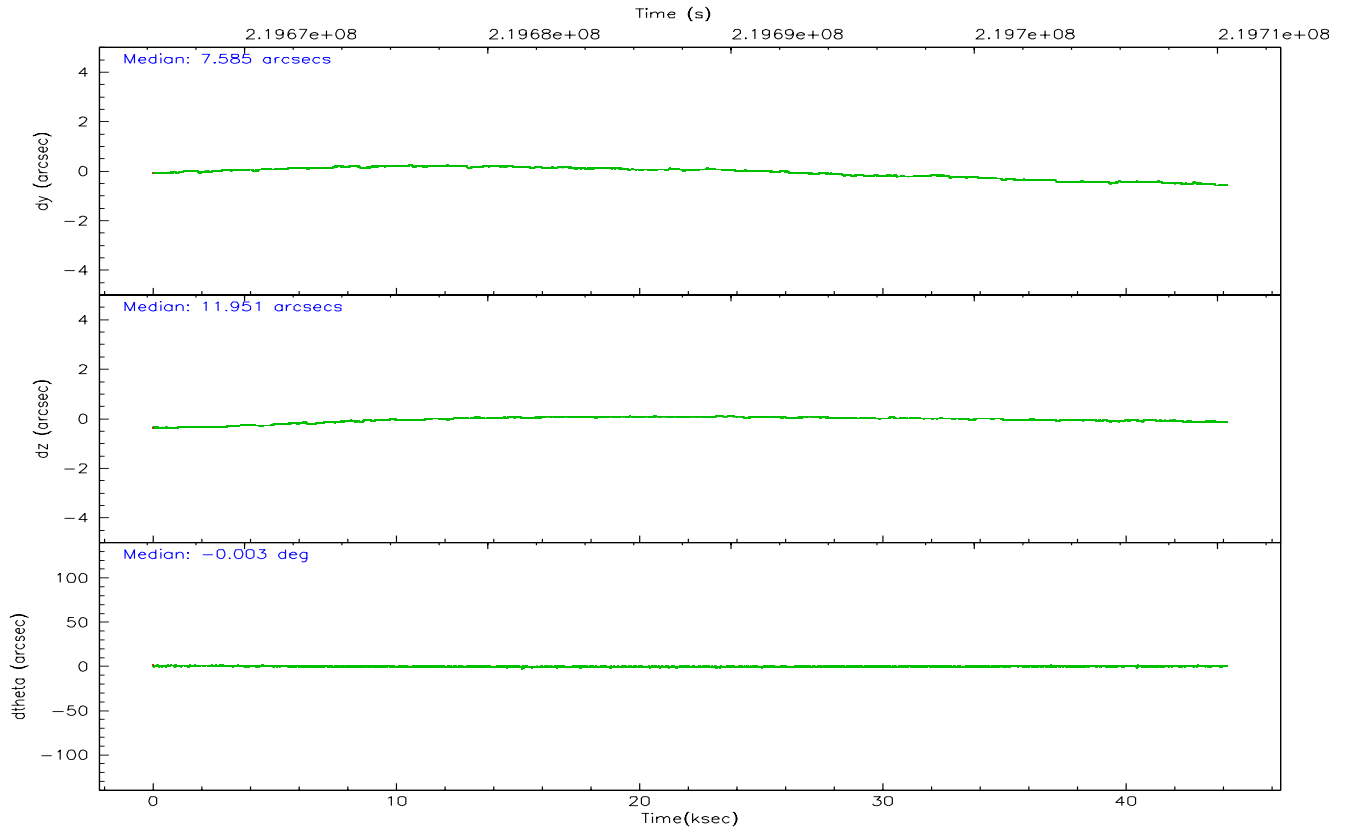
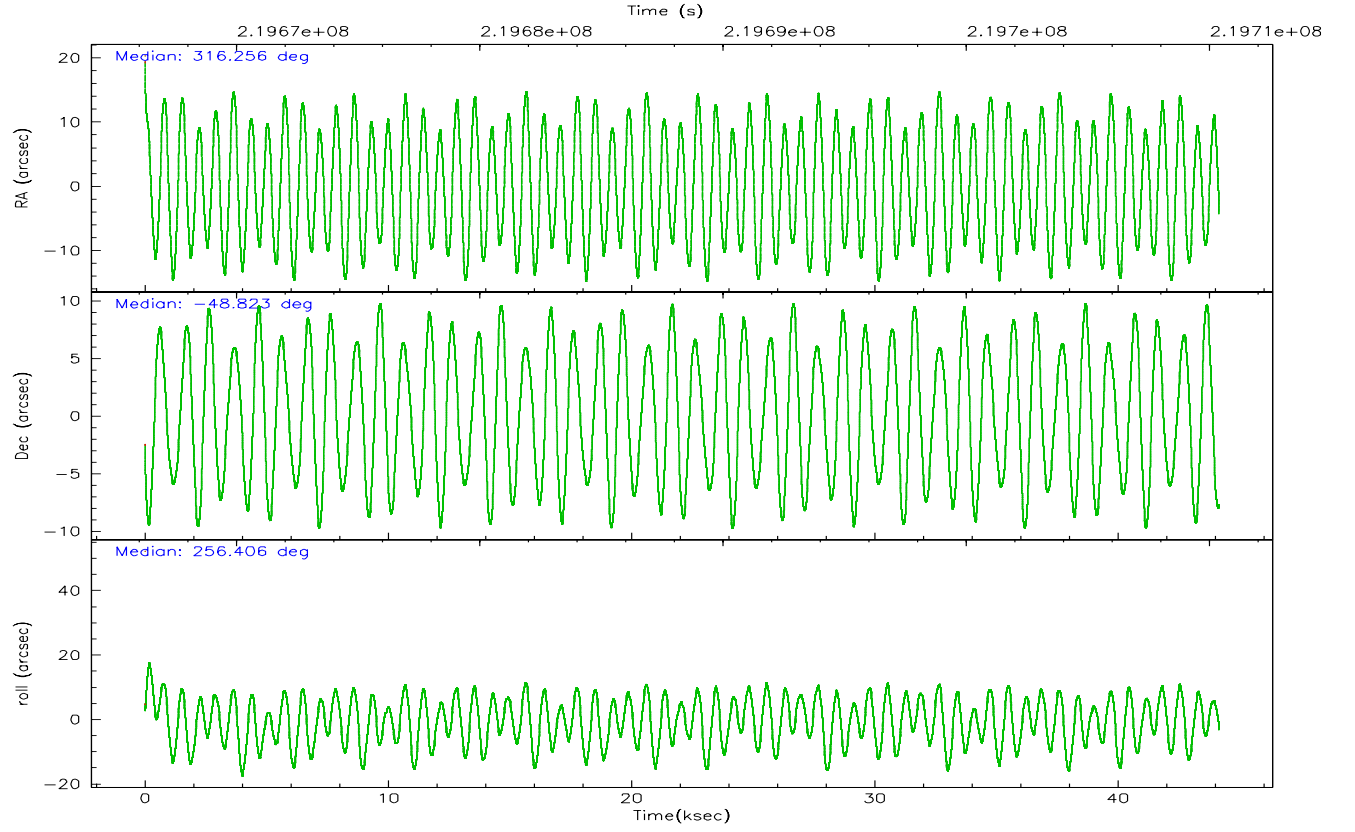
	ccd 7
grade 0 events	4664
	3%
grade 1 events	105
	0%
grade 2 events	11735
	9%
grade 3 events	5085
	4%
grade 4 events	4758
	3%
grade 5 events	9111
	7%
grade 6 events	27919
	23%
grade 7 events	57161
	47%

2.2 Compared Parameters

Parameter	Planned	Actual	Parameter	Planned	Actual
Instrument	ACIS	ACIS	Obspar format version number	6	6
Detector	ACIS-7	ACIS-7	Obspar file type	PREDICTED	ACTUAL
Grating	NONE	NONE	Obspar update status	NONE	UPDATED
Data mode	FAINT	FAINT	On-chip summing requested	N	N
Observation mode	POINTING	POINTING	Subarray requested	CUSTOM	1/4
Pointing RA	316.243443	316.2556824326563	Subarray start row	1	1
Pointing Dec	-48.796812	-48.82282021386015	Subarray row count	256	256
Pointing Roll	256.250173	256.4160009329447	Alternating exposures requested	N	N
SIM focus pos (mm)	-0.684267	-0.6828225247311905	Primary exposure time	0.000000	0.8
SIM defocus (mm)	0	0.001444936568705701			
SIM translation stage pos (mm)	-178.632523	-178.6370735452349			
SIM translation stage offset (mm)	-11.5	-11.49544903777291			
Observation start time	219666393.184000	219665557.30527			
Observation start date	2004-12-17T10:25:29	2004-12-17T10:12:37			
Observation end time	219710393.184000	219710986.84482			
Observation end date	2004-12-17T22:38:49	2004-12-17T22:49:46			
Read mode	TIMED	TIMED			

2.3 Aspect



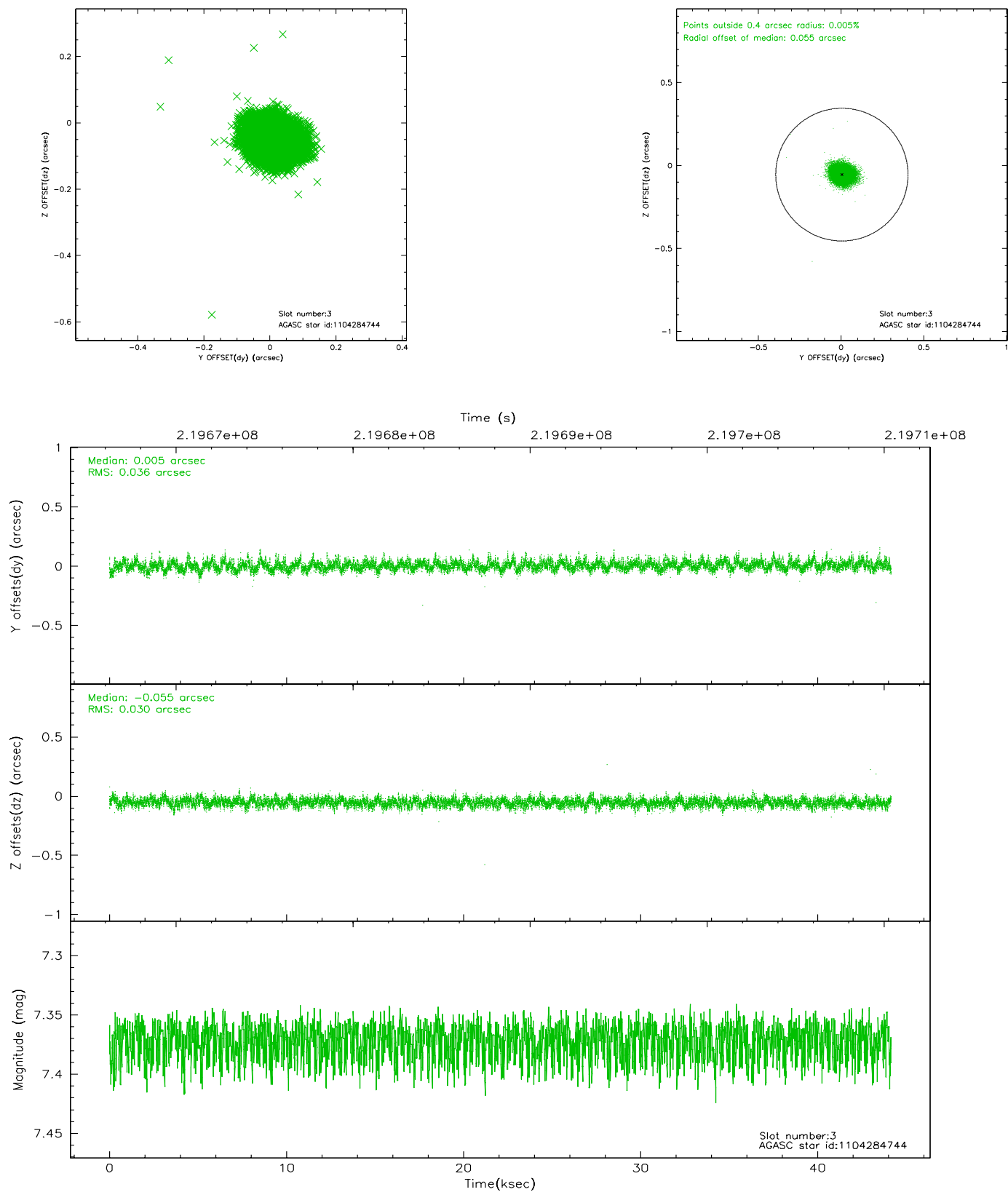


Slot Statistics

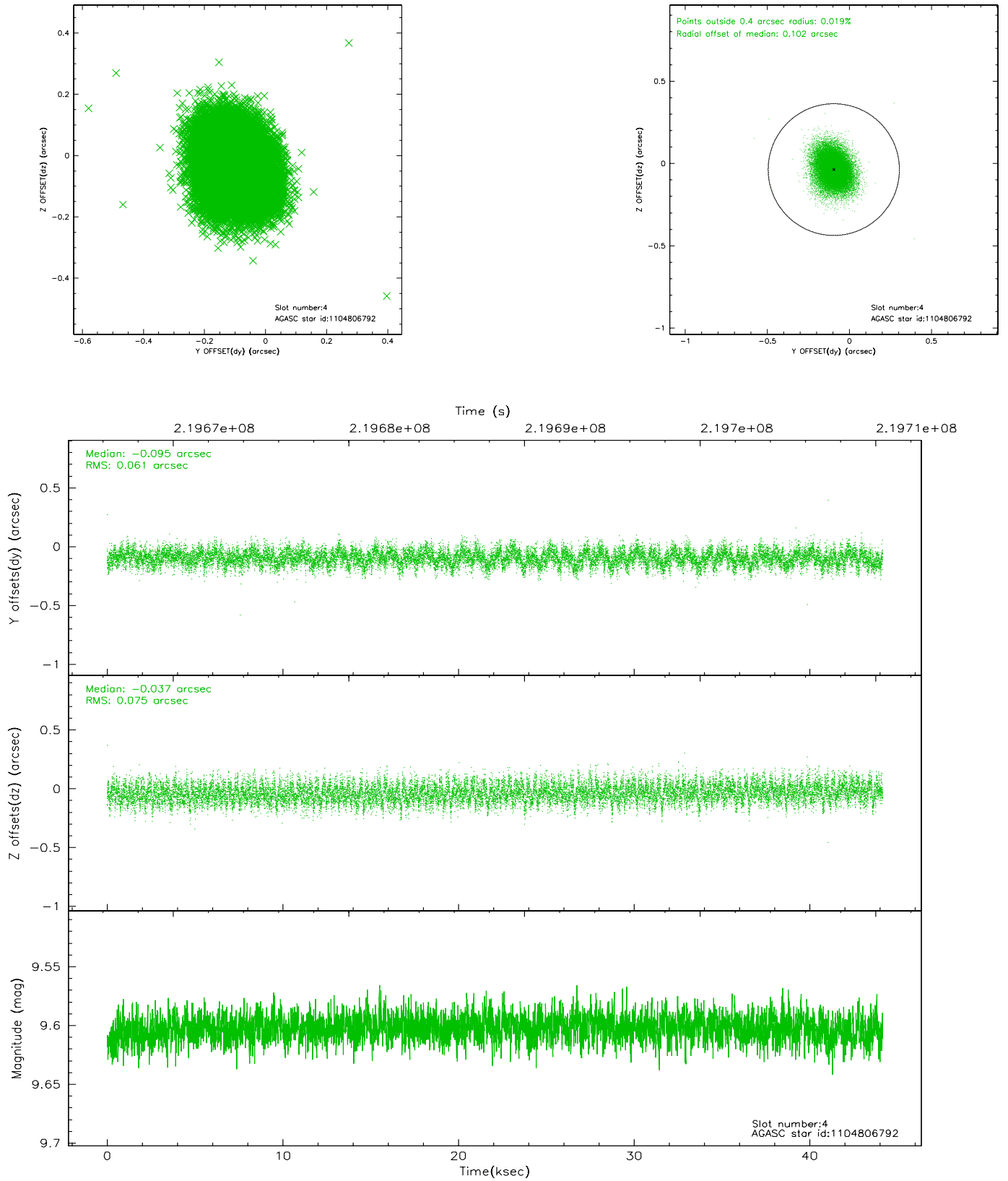
slot	status	id	mag	n_pts	med_dy	med_dz	dr1	dr2	ra	dec	mean_y	mean_z
0	FID	ACIS-S-1	7.18	10773	0.059	0.137	0.010	0.017	0.000000	0.000000	936.58	-1965.38
1	FID	ACIS-S-5	7.23	10772	-0.039	0.103	0.007	0.013	0.000000	0.000000	-1812.43	-67.77
2	FID	ACIS-S-6	7.42	10772	-0.042	-0.230	0.009	0.015	0.000000	0.000000	402.15	575.75
3	GUIDE	1104284744	7.37	21542	0.005	-0.055	0.049	0.081	316.571361	-48.526307	-1129.83	528.17
4	GUIDE	1104806792	9.60	21517	-0.095	-0.037	0.103	0.167	315.583247	-48.831884	501.58	-1487.90
5	GUIDE	1104810032	9.77	21518	0.058	-0.049	0.121	0.207	315.296883	-49.246406	2115.16	-1772.47
6	GUIDE	1104811800	7.19	21542	-0.160	0.002	0.065	0.103	316.974422	-48.940124	98.54	1803.72
7	GUIDE	1104815064	8.77	21505	0.193	0.141	0.068	0.111	316.816074	-49.156642	943.04	1619.13

2.4 Star Slots

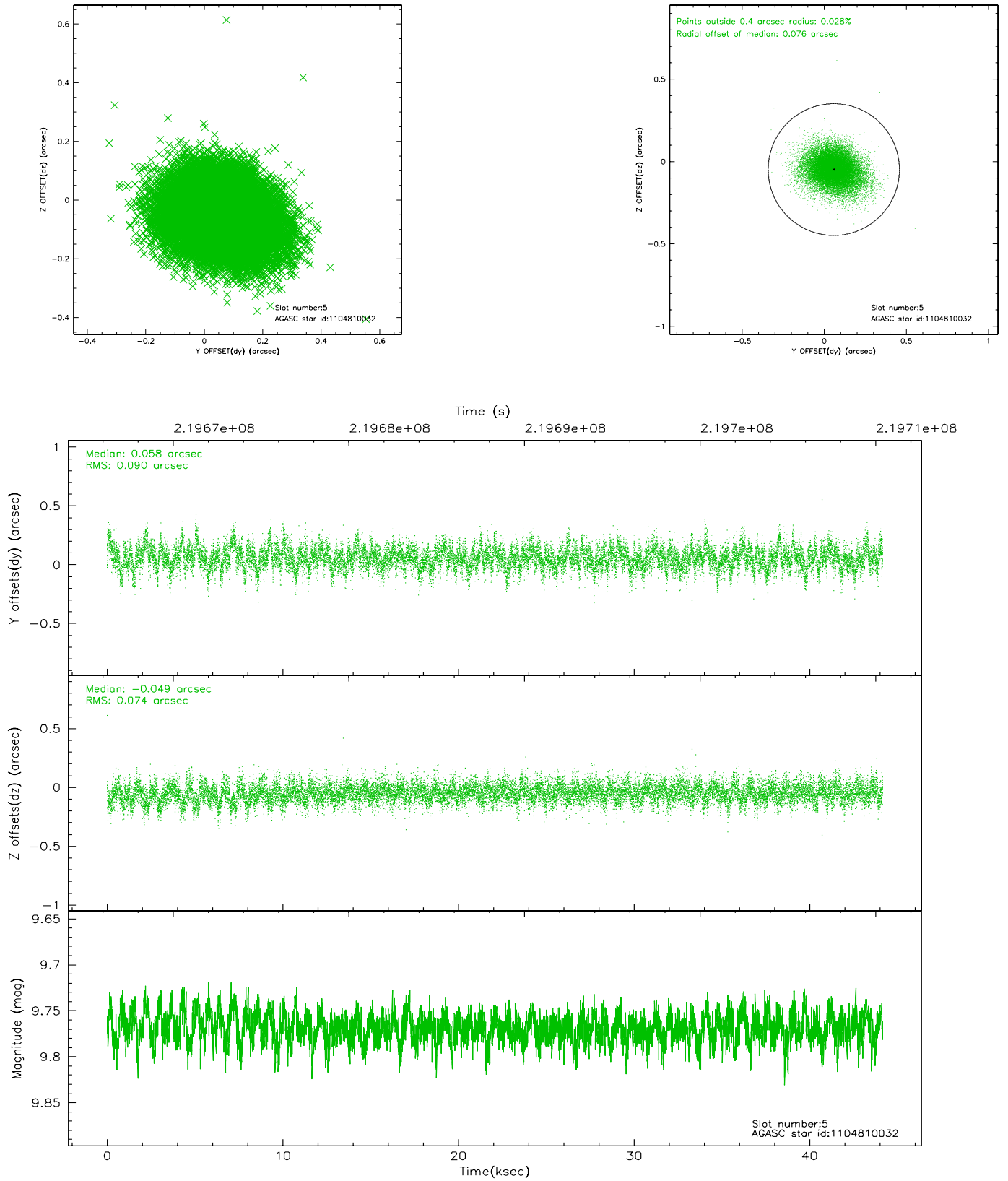
2.4.1 Slot 3



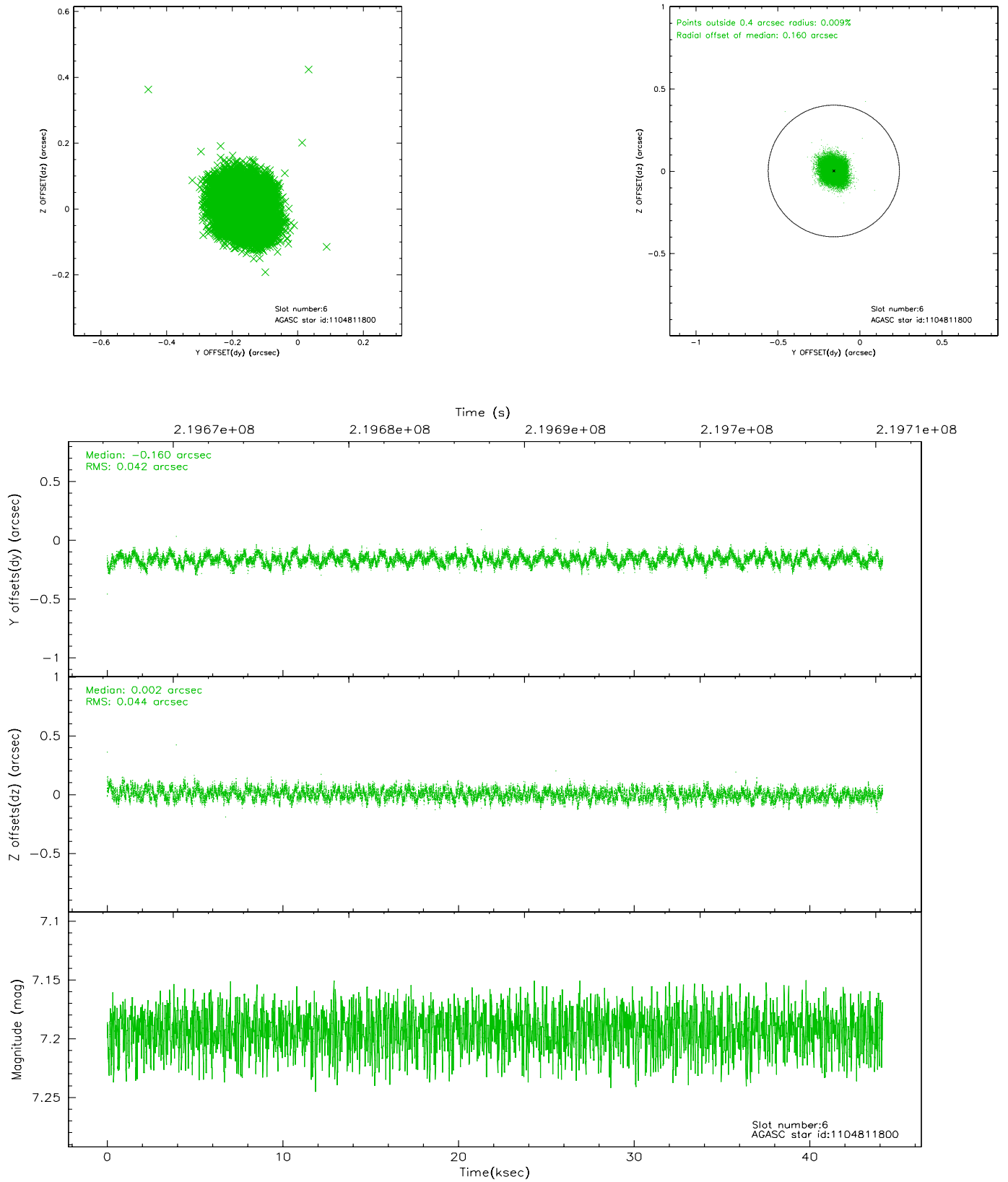
2.4.2 Slot 4



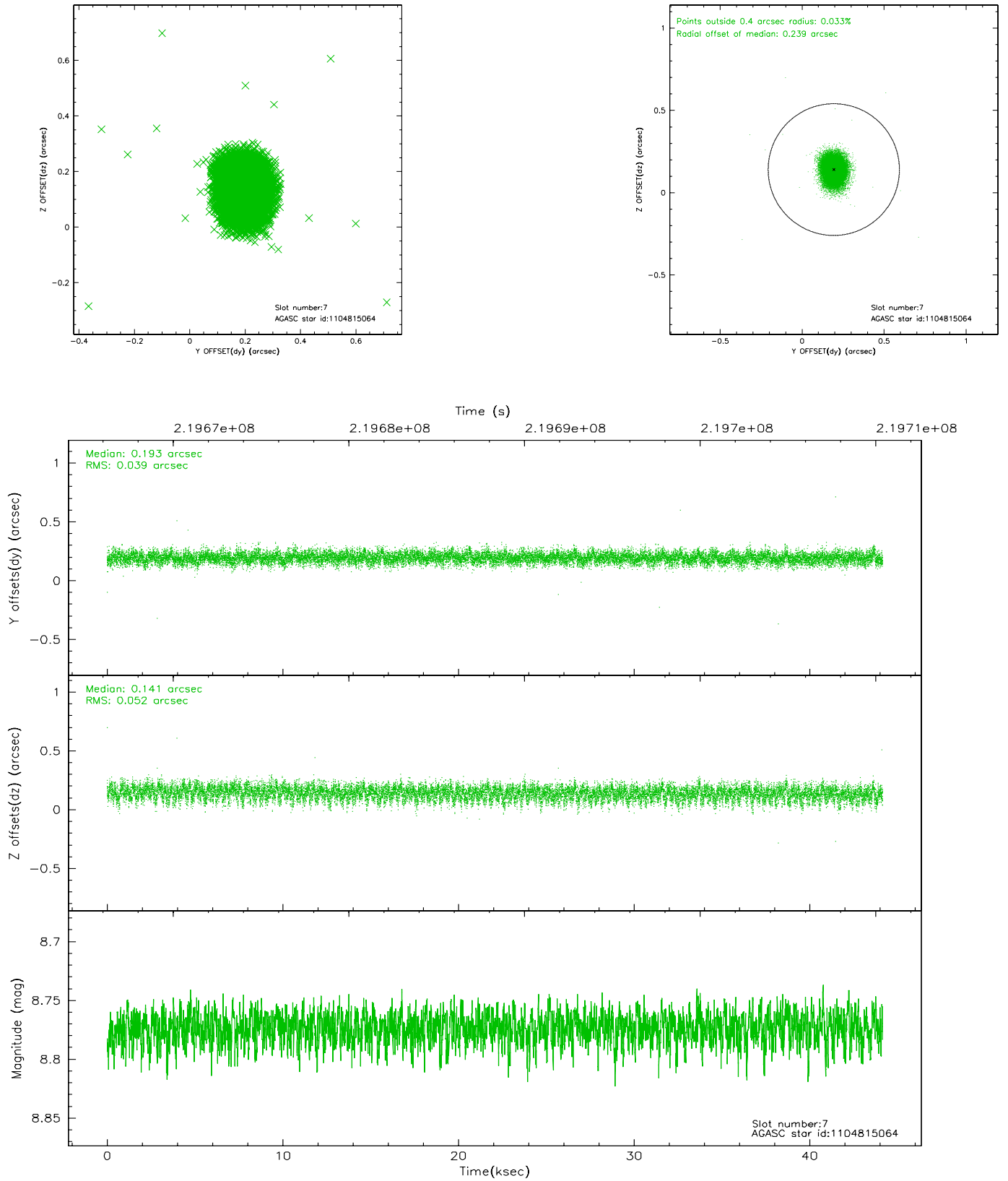
2.4.3 Slot 5



2.4.4 Slot 6

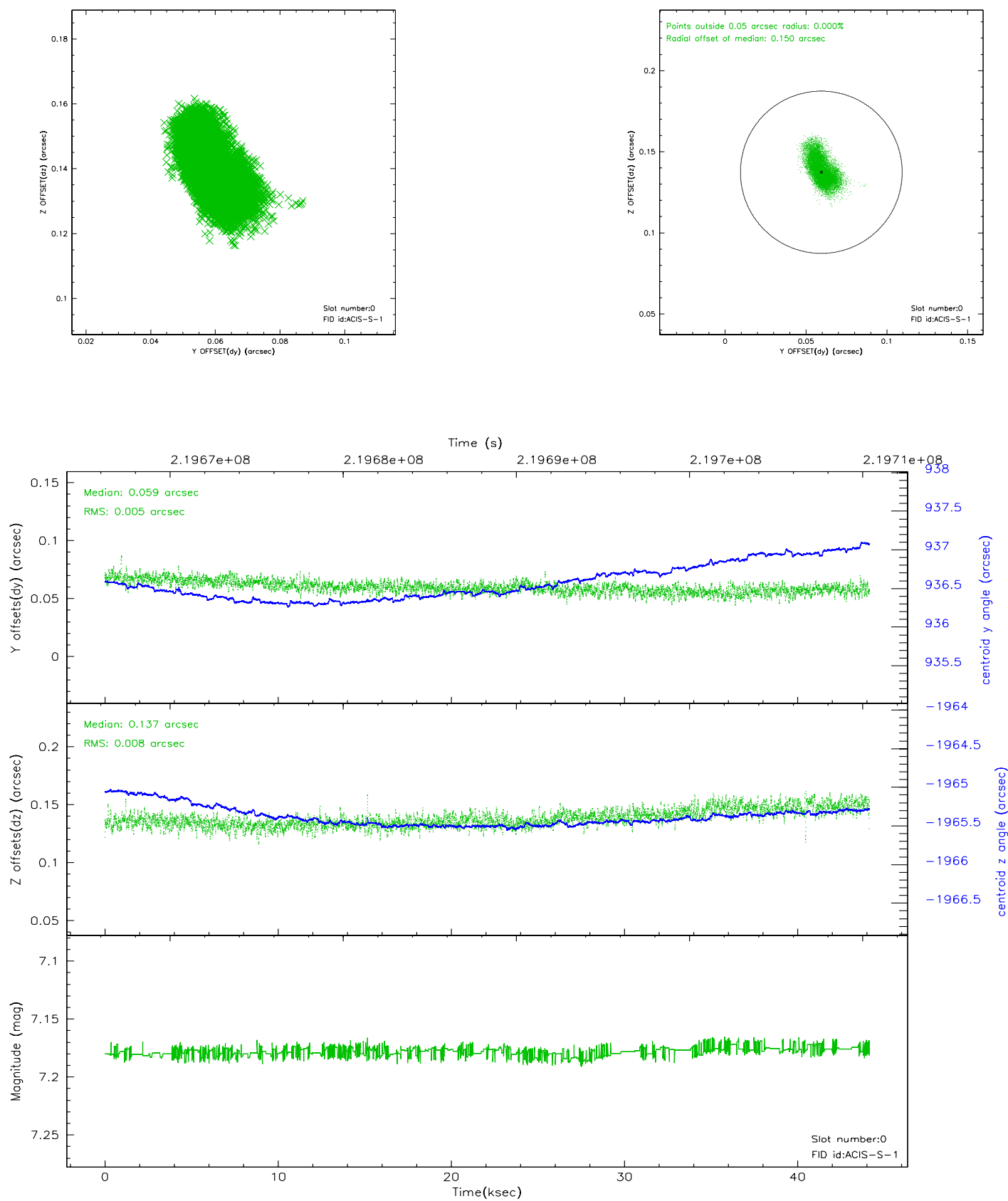


2.4.5 Slot 7

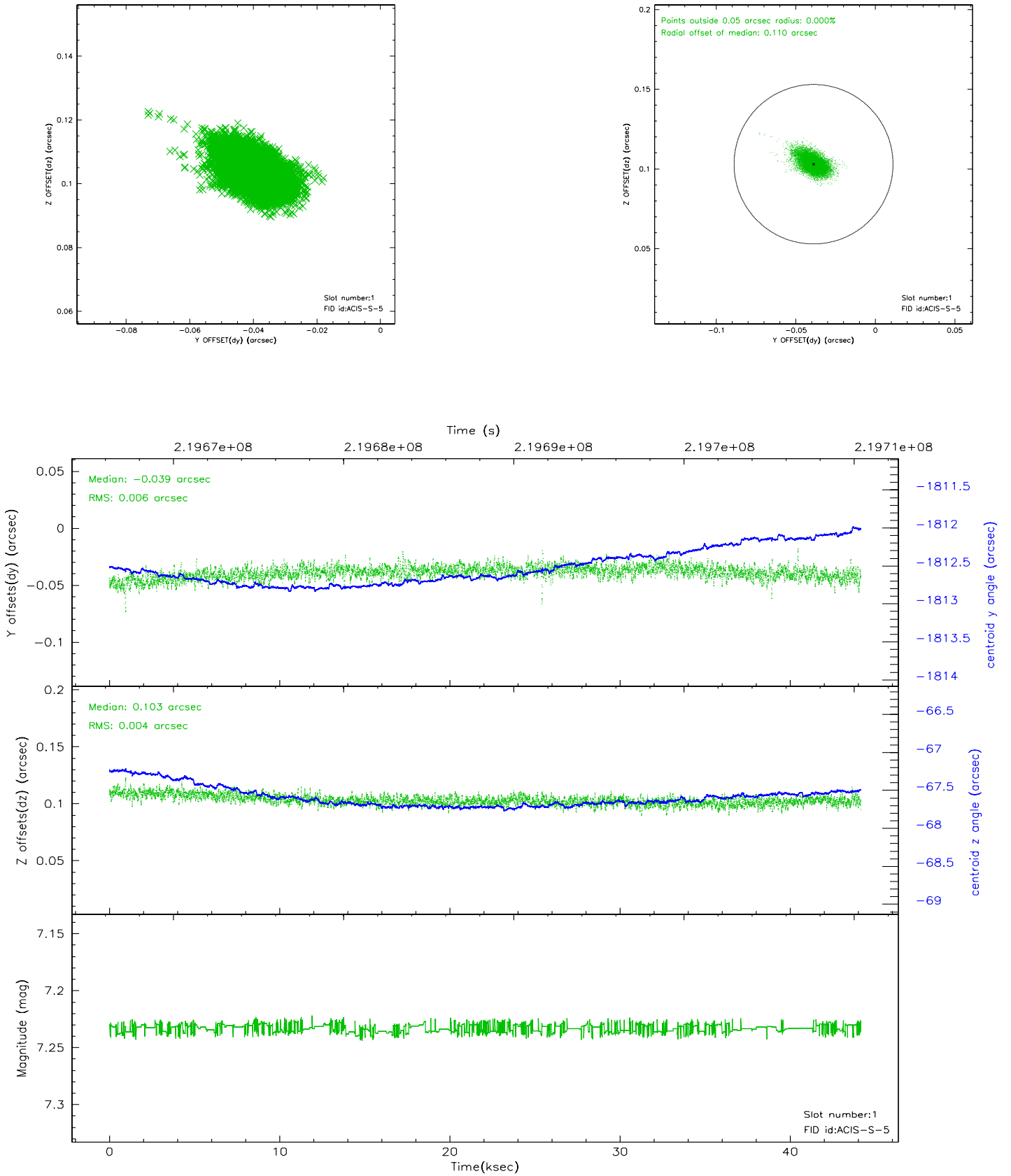


2.5 FID Slots

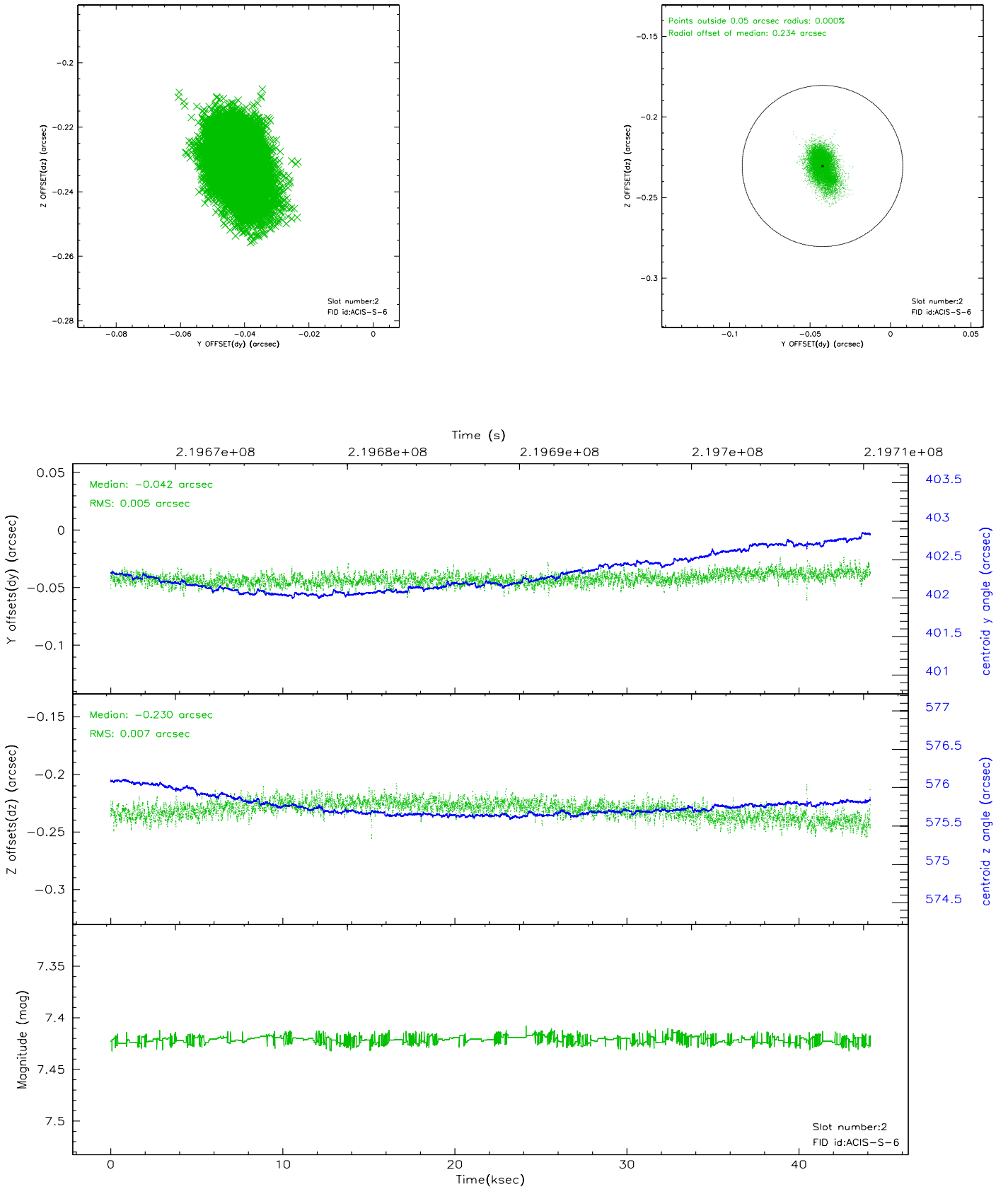
2.5.1 Slot 0



2.5.2 Slot 1



2.5.3 Slot 2



3 Point Sources

A Summary

A.1 Status

V&V Scientist	Jen Lauer
V&V Date (YYYY-MM-DD)	2006.04.10
V&V Edition	1
V&V Disposition and Status	OK
V&V Charge Time	44.1648

A.2 Comments

Preferred roll met.