

V&V Reference Report

L2 ASCDS Version : 7.6.7.1

Observation 5724 - L2 Version 002
Chandra X-Ray Center

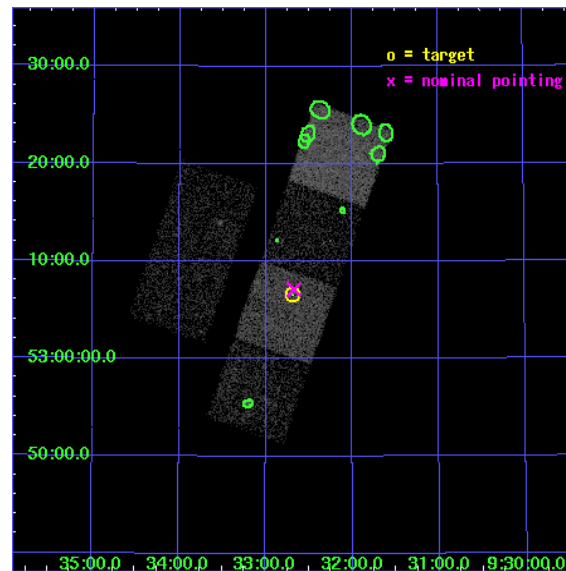
L2 Processing Date : Apr 7 2006

Contents

1	Front	2
2	OBI	3
2.1	OBI	3
2.1.1	Images	3
2.1.2	Bias	3
2.1.3	Parameters	4
2.1.4	Events	4
2.2	Compared Parameters	5
2.3	Aspect	6
2.4	Star Slots	9
2.4.1	Slot 3	9
2.4.2	Slot 4	10
2.4.3	Slot 5	11
2.4.4	Slot 6	12
2.4.5	Slot 7	13
2.5	FID Slots	14
2.5.1	Slot 0	14
2.5.2	Slot 1	15
2.5.3	Slot 2	16
3	Point Sources	17
A	Summary	18
A.1	Status	18
A.2	Comments	18

1 Front

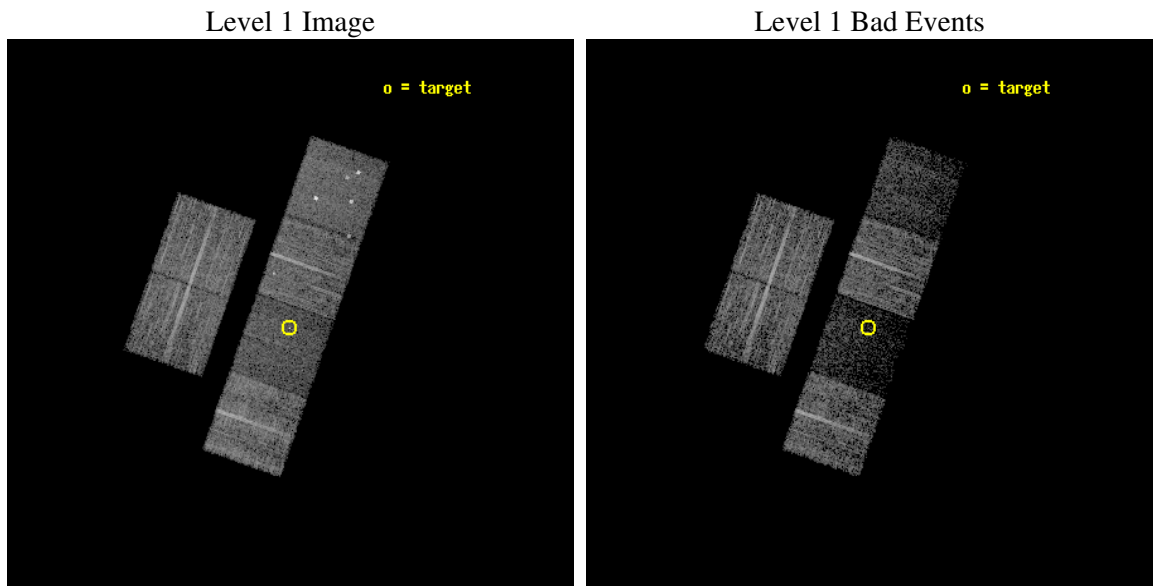
seq_num	701146
obs_id	5724
title	What kind of Jets does Nature make? X-ray characterization of the FIRST Flat Spectrum Sample
observer	Dr. Giovanni Fossati
object	S4 0929+533
dtcycle	0
cycle	P
ra_targ	143.17125
dec_targ	53.109361
ra_nom	143.16858724098
dec_nom	53.11885672578
roll_nom	109.30711173912
revision	2
ontime	5958.3999778032
livetime	5882.9511295666
ontime2	5958.3999778032
ontime3	5958.3999778032
ontime5	5958.3999778032
ontime6	5958.3999778032
ontime7	5958.3999778032
ontime8	5958.3999778032
l2events	35278



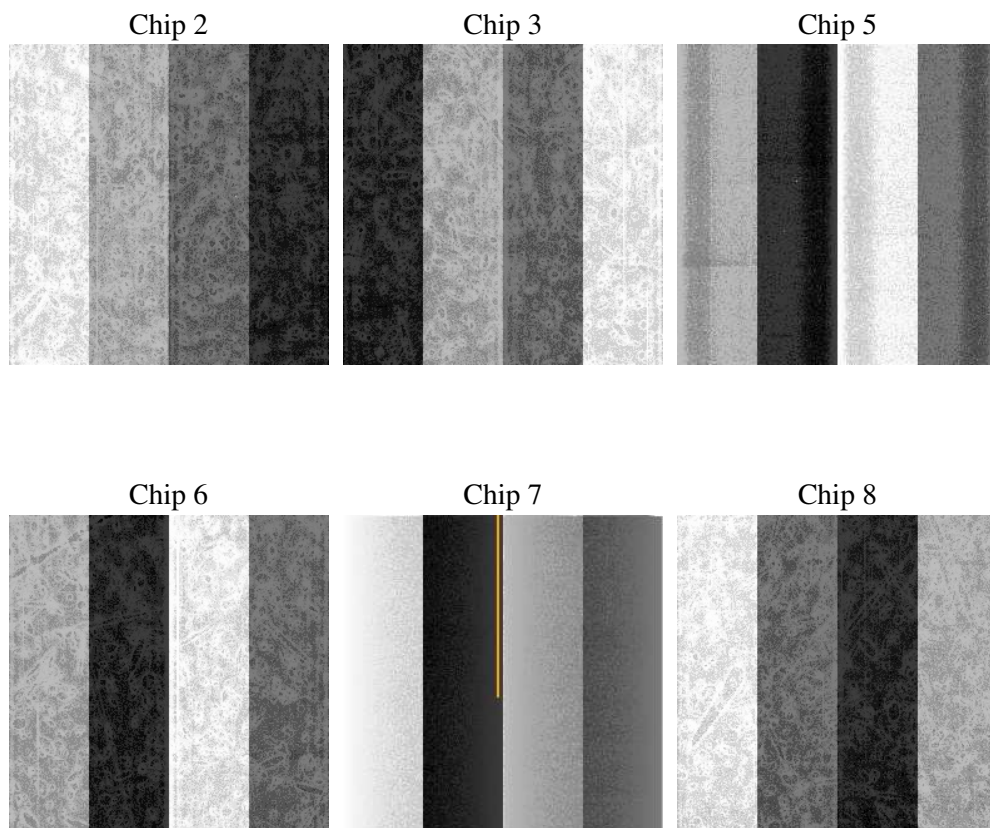
2 OBI

2.1 OBI

2.1.1 Images



2.1.2 Bias



2.1.3 Parameters

obi_num	0
ascdsver	7.6.7.1
caldsver	3.2.1
date	2006-04-07T12:32:02
revision	2

sched_exp_time	6000.000000
ontime	5963.4469187856
ontime2	5963.4468988776
ontime3	5963.4468988776
ontime5	5963.4469187856
ontime6	5963.4469187856
ontime7	5963.4469187856
ontime8	5963.4468988776
l1events	190545

2.1.4 Events

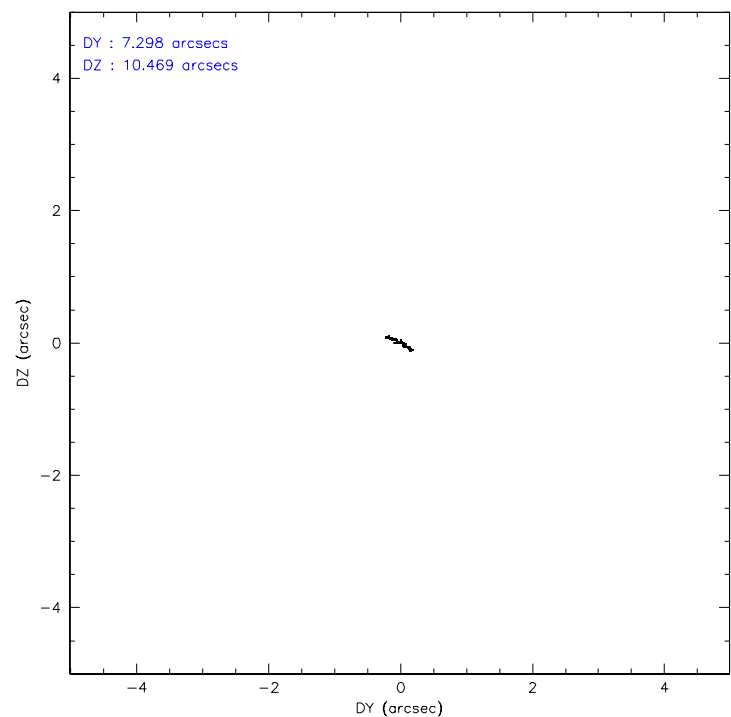
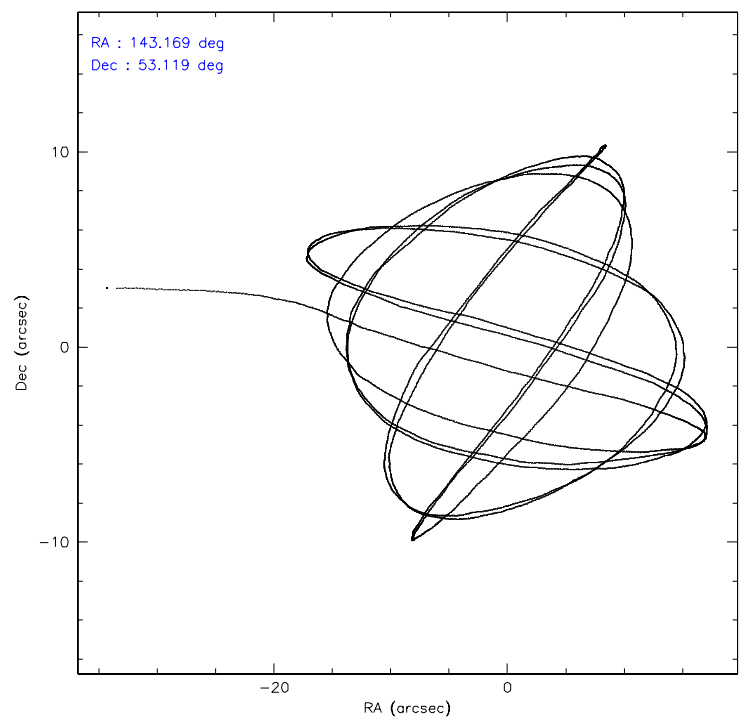
	ccd 2	ccd 3	ccd 5	ccd 6	ccd 7	ccd 8
level 1 events	36401	32918	31016	32584	19117	38509
rejected events	33537	30374	11941	29444	8451	29184
rejected %	92%	92%	38%	90%	44%	75%

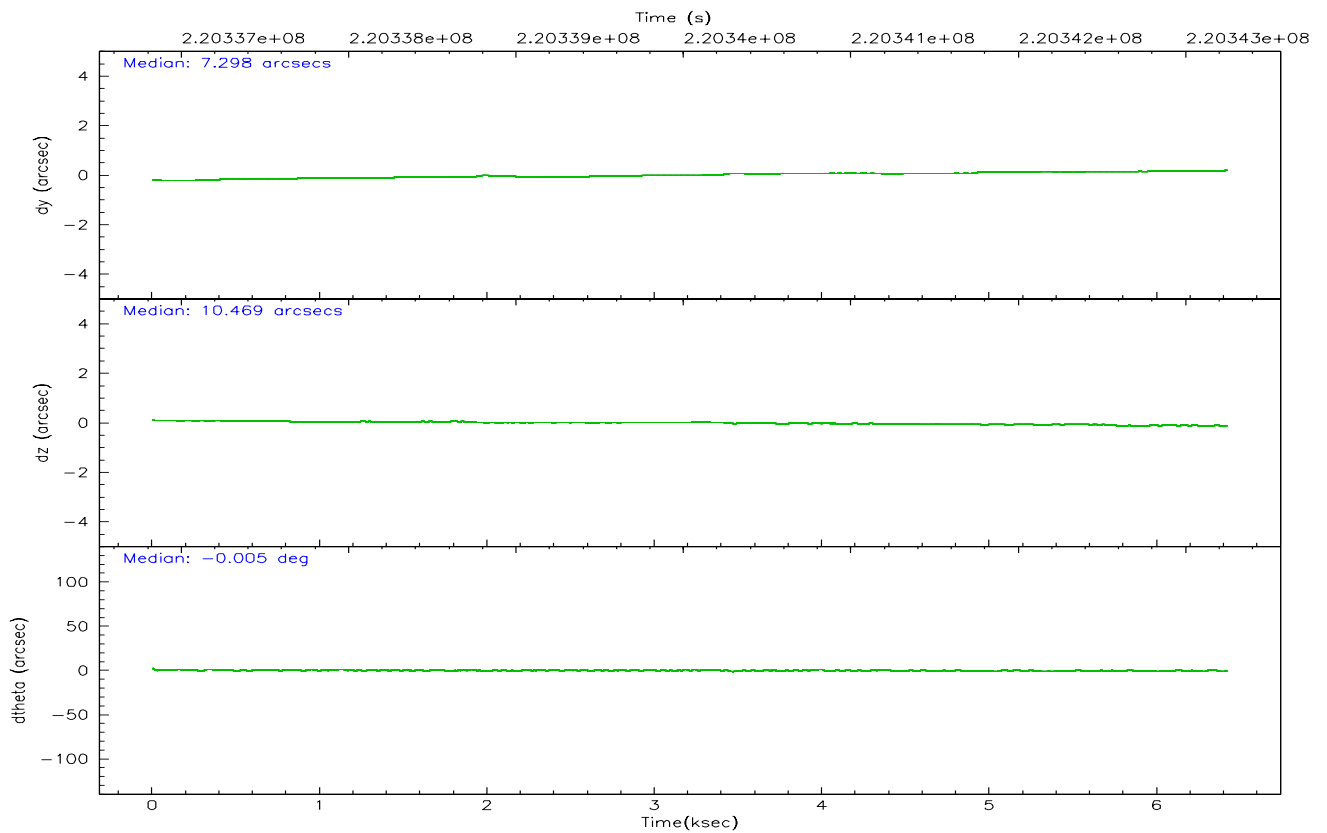
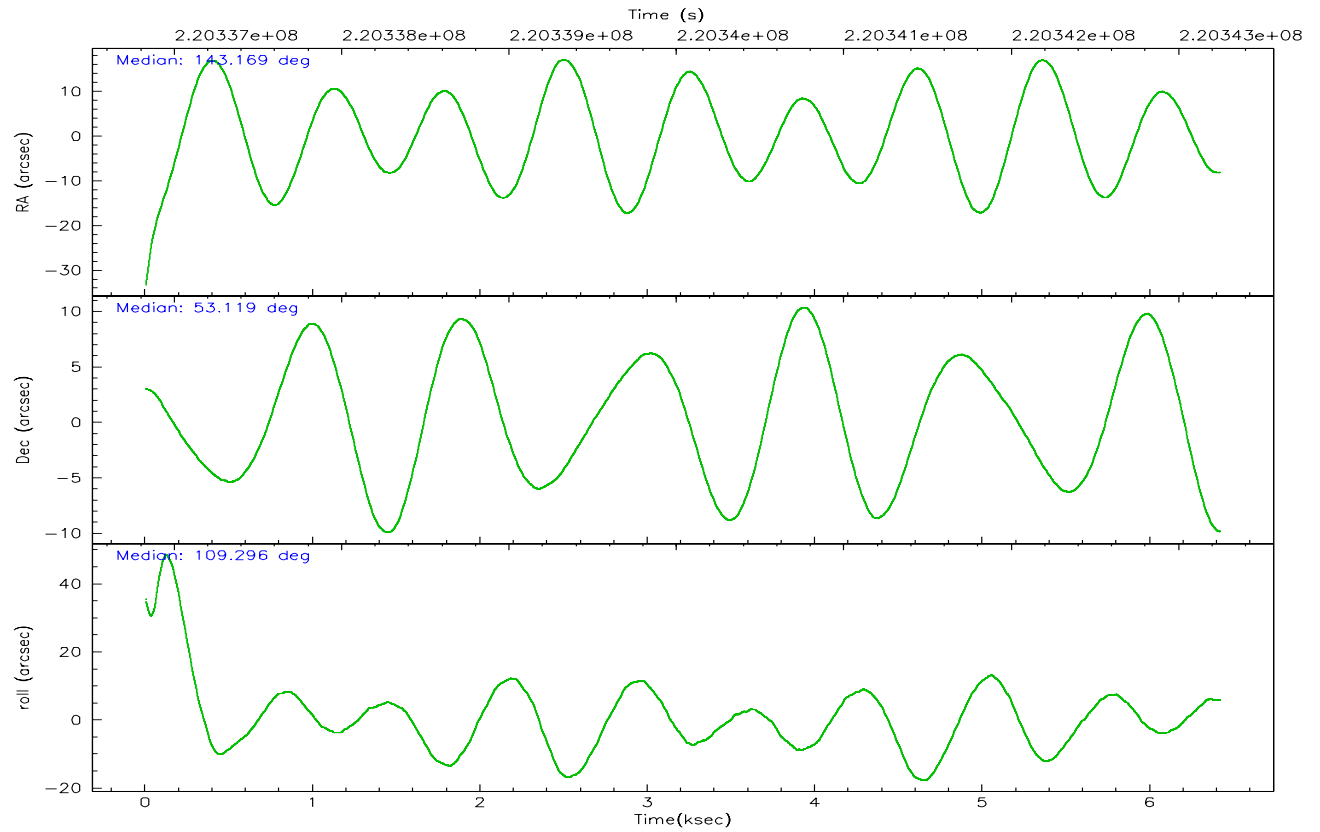
	ccd 2	ccd 3	ccd 5	ccd 6	ccd 7	ccd 8
grade 0 events	1161	1040	3925	1364	1061	2932
	3%	3%	12%	4%	5%	7%
grade 1 events	16	14	21	21	23	24
	0%	0%	0%	0%	0%	0%
grade 2 events	713	554	5922	635	3128	2048
	1%	1%	19%	1%	16%	5%
grade 3 events	290	278	617	343	833	1117
	0%	0%	1%	1%	4%	2%
grade 4 events	307	278	594	323	822	991
	0%	0%	1%	0%	4%	2%
grade 5 events	601	607	1680	658	1555	1098
	1%	1%	5%	2%	8%	2%
grade 6 events	395	396	8026	476	4832	2249
	1%	1%	25%	1%	25%	5%
grade 7 events	32918	29751	10231	28764	6863	28050
	90%	90%	32%	88%	35%	72%

2.2 Compared Parameters

Parameter	Planned	Actual	Parameter	Planned	Actual
Instrument	ACIS	ACIS	Obspar format version number	6	6
Detector	ACIS-235678	ACIS-235678	Obspar file type	PREDICTED	ACTUAL
Grating	NONE	NONE	Obspar update status	NONE	UPDATED
Data mode	VFAINT	VFAINT	On-chip summing requested	N	N
Observation mode	POINTING	POINTING	Subarray requested	NONE	NONE
Pointing RA	143.203468	143.1685872409848	Alternating exposures requested	N	N
Pointing Dec	53.101427	53.11885672578028	Primary exposure time	0.000000	3.2
Pointing Roll	109.122640	109.3071117391236			
SIM focus pos (mm)	-0.684267	-0.6828225247311905			
SIM defocus (mm)	0	0.001444936568705701			
SIM translation stage pos (mm)	-190.132523	-190.1400660498719			
SIM translation stage offset (mm)	0	0.00754346686406393			
Observation start time	220337256.184000	220336176.39798			
Observation start date	2004-12-25T04:46:32	2004-12-25T04:29:36			
Observation end time	220343256.184000	220343611.23582			
Observation end date	2004-12-25T06:26:32	2004-12-25T06:33:31			
Read mode	TIMED	TIMED			

2.3 Aspect



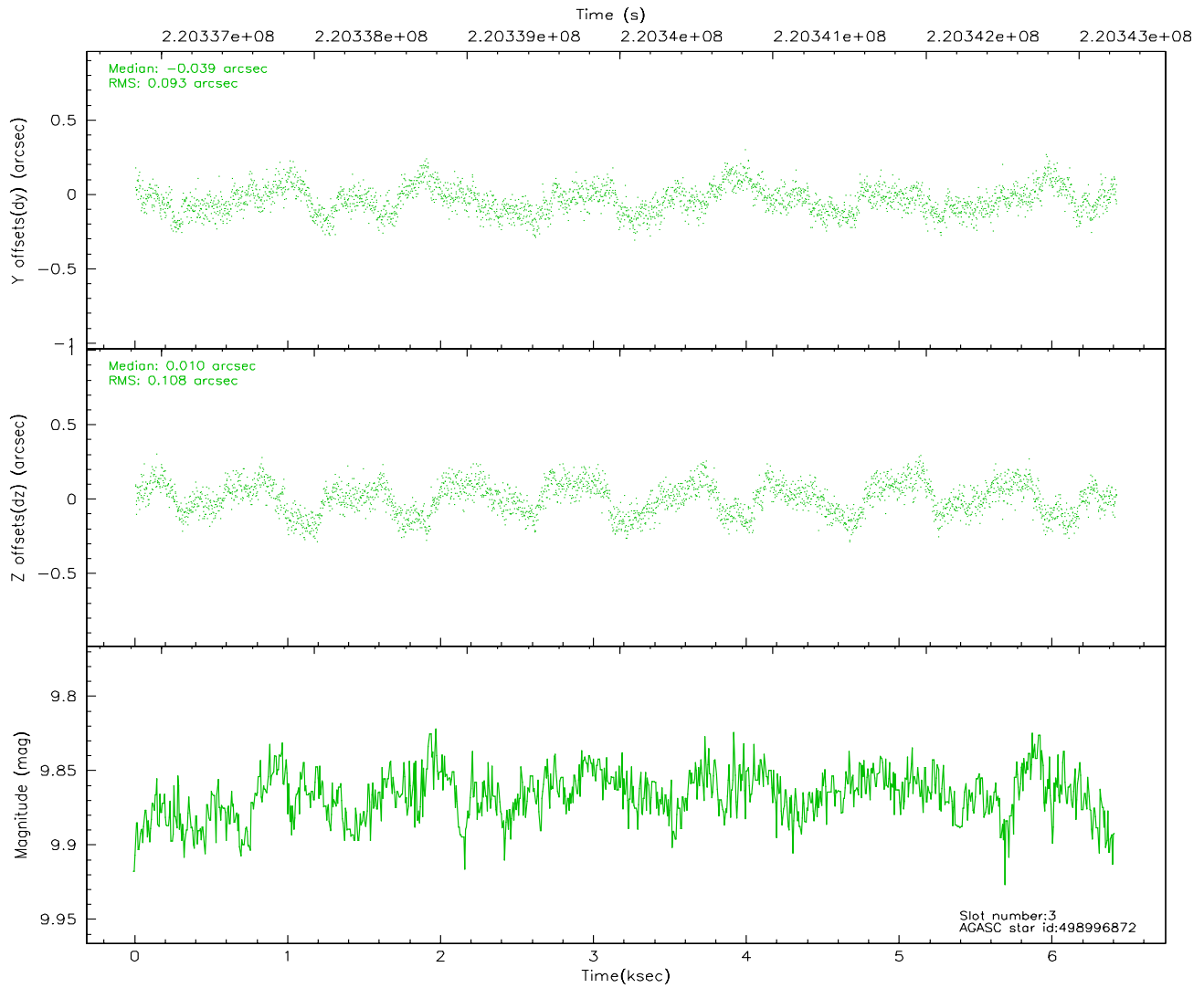
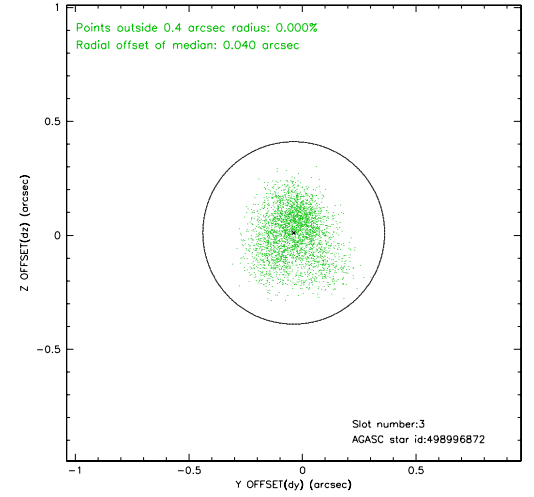
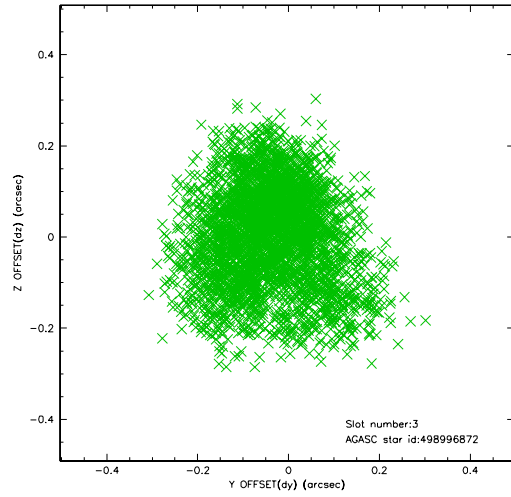


Slot Statistics

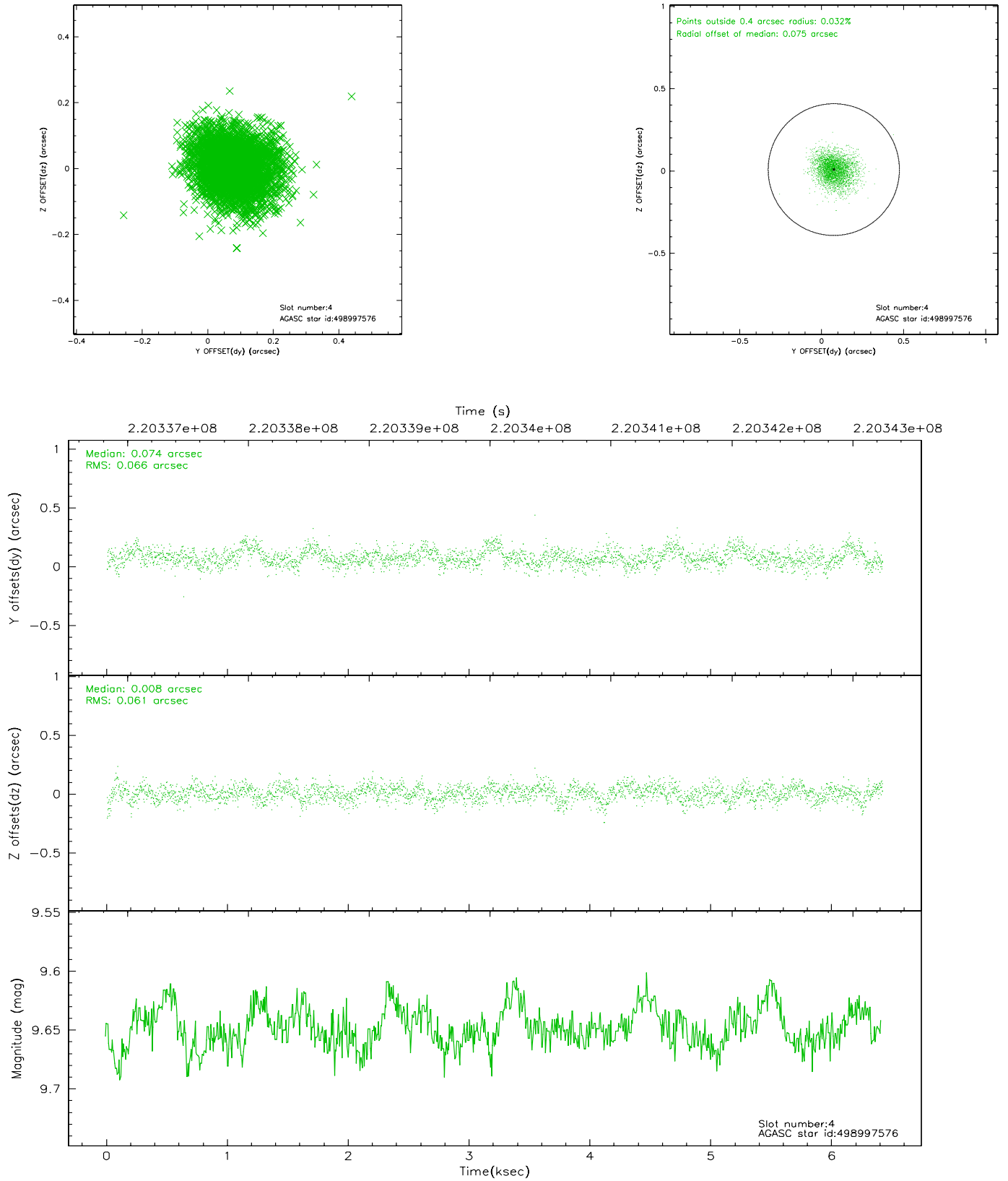
slot	status	id	mag	n_pts	med_dy	med_dz	dr1	dr2	ra	dec	mean_y	mean_z
0	FID	ACIS-S-2	7.10	1565	-0.042	0.004	0.007	0.011	0.000000	0.000000	-760.06	-1731.73
1	FID	ACIS-S-4	7.21	1565	0.056	0.019	0.007	0.013	0.000000	0.000000	2152.86	175.89
2	FID	ACIS-S-5	7.23	1564	-0.045	-0.014	0.008	0.014	0.000000	0.000000	-1811.77	170.47
3	GUIDE	498996872	9.87	3125	-0.039	0.010	0.153	0.243	143.336185	52.754751	-1273.68	135.51
4	GUIDE	498997576	9.65	3129	0.074	0.008	0.094	0.156	143.133327	52.582652	-1714.64	756.69
5	GUIDE	498999296	9.32	3129	0.076	-0.000	0.107	0.164	142.650492	52.789973	-661.30	1503.75
6	GUIDE	499000752	10.10	3129	-0.156	0.194	0.132	0.212	143.911753	53.783814	1834.72	-2229.28
7	GUIDE	499000840	9.50	3124	0.044	-0.202	0.096	0.156	142.512408	52.584730	-1255.19	2034.21

2.4 Star Slots

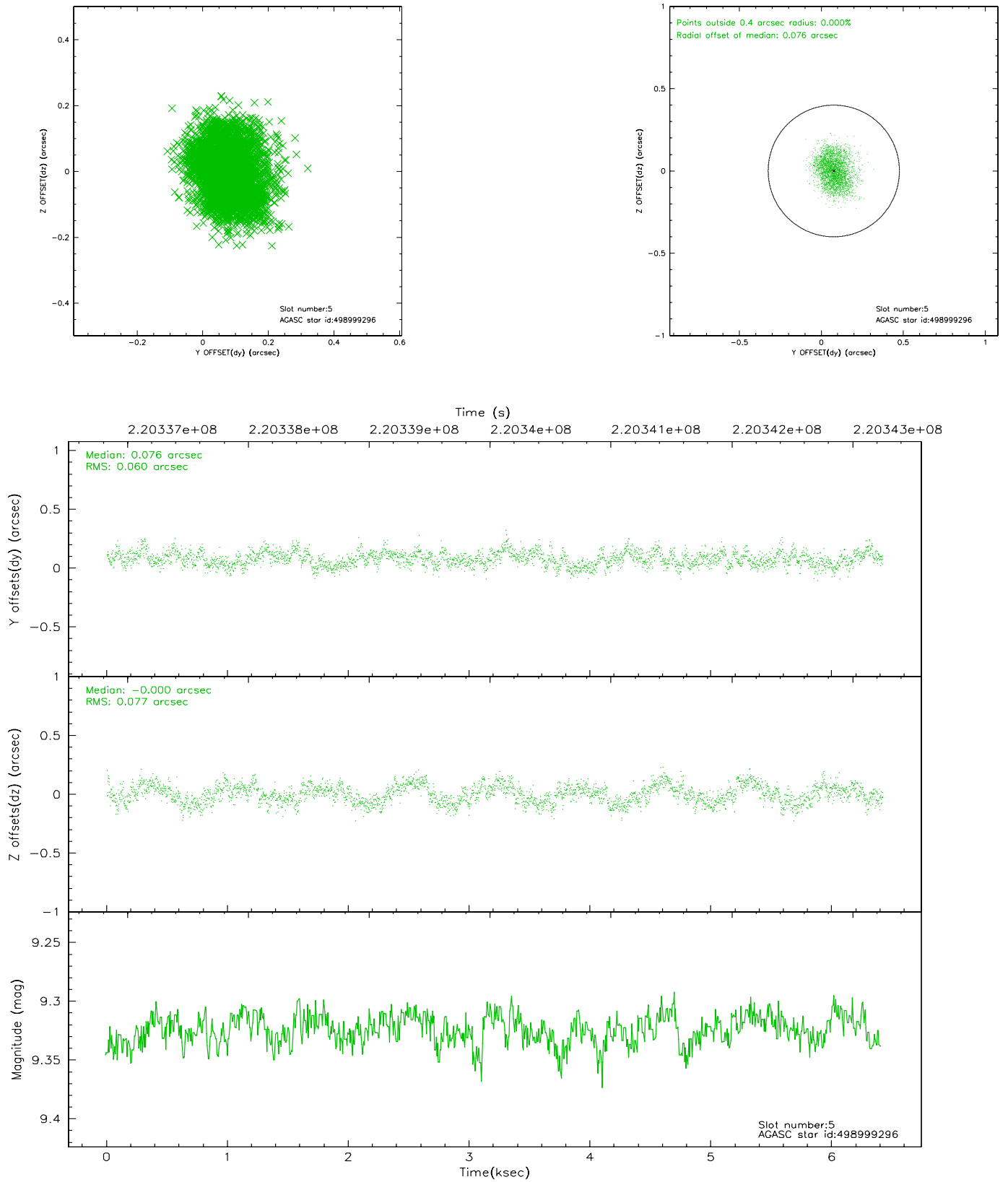
2.4.1 Slot 3



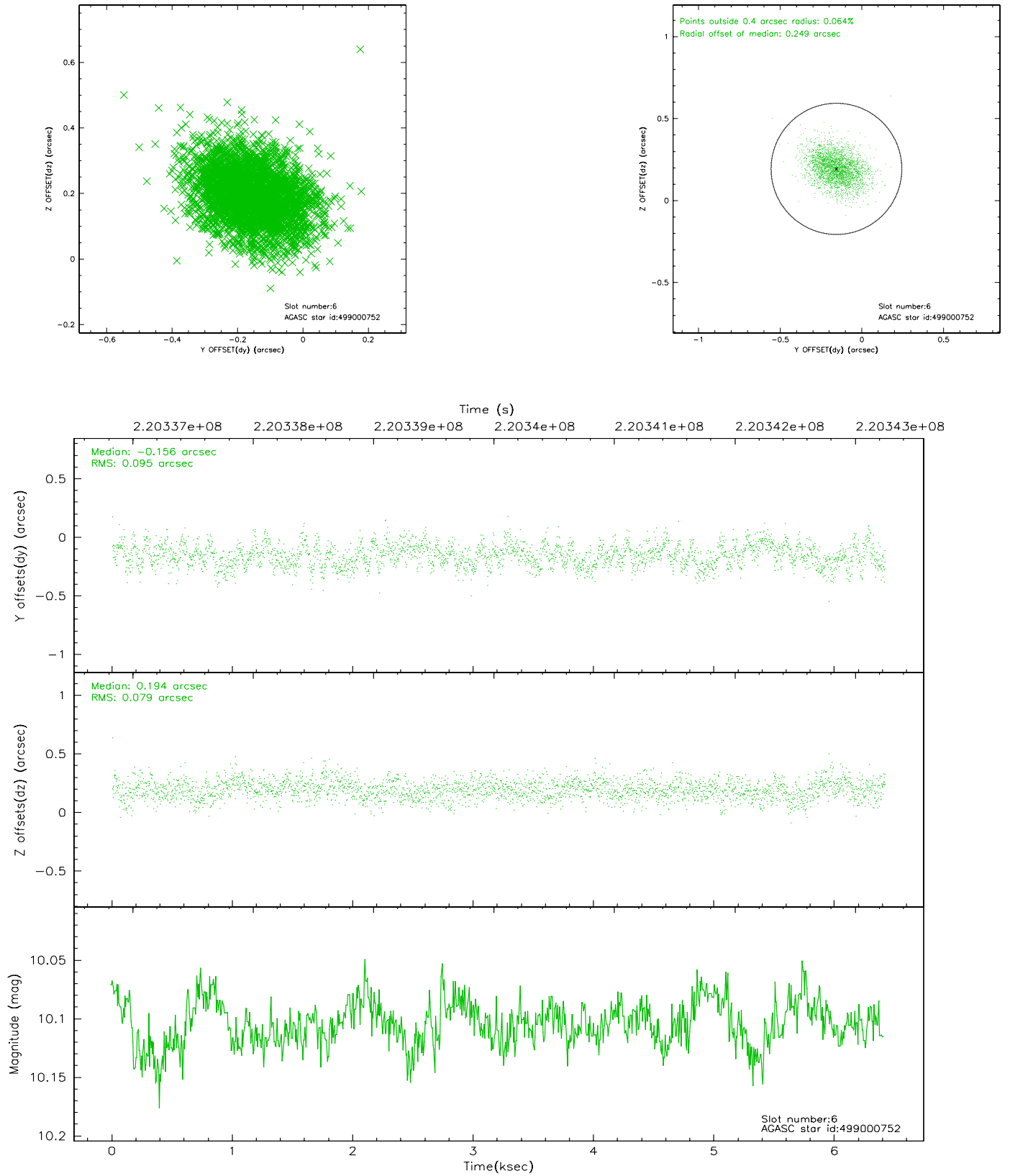
2.4.2 Slot 4



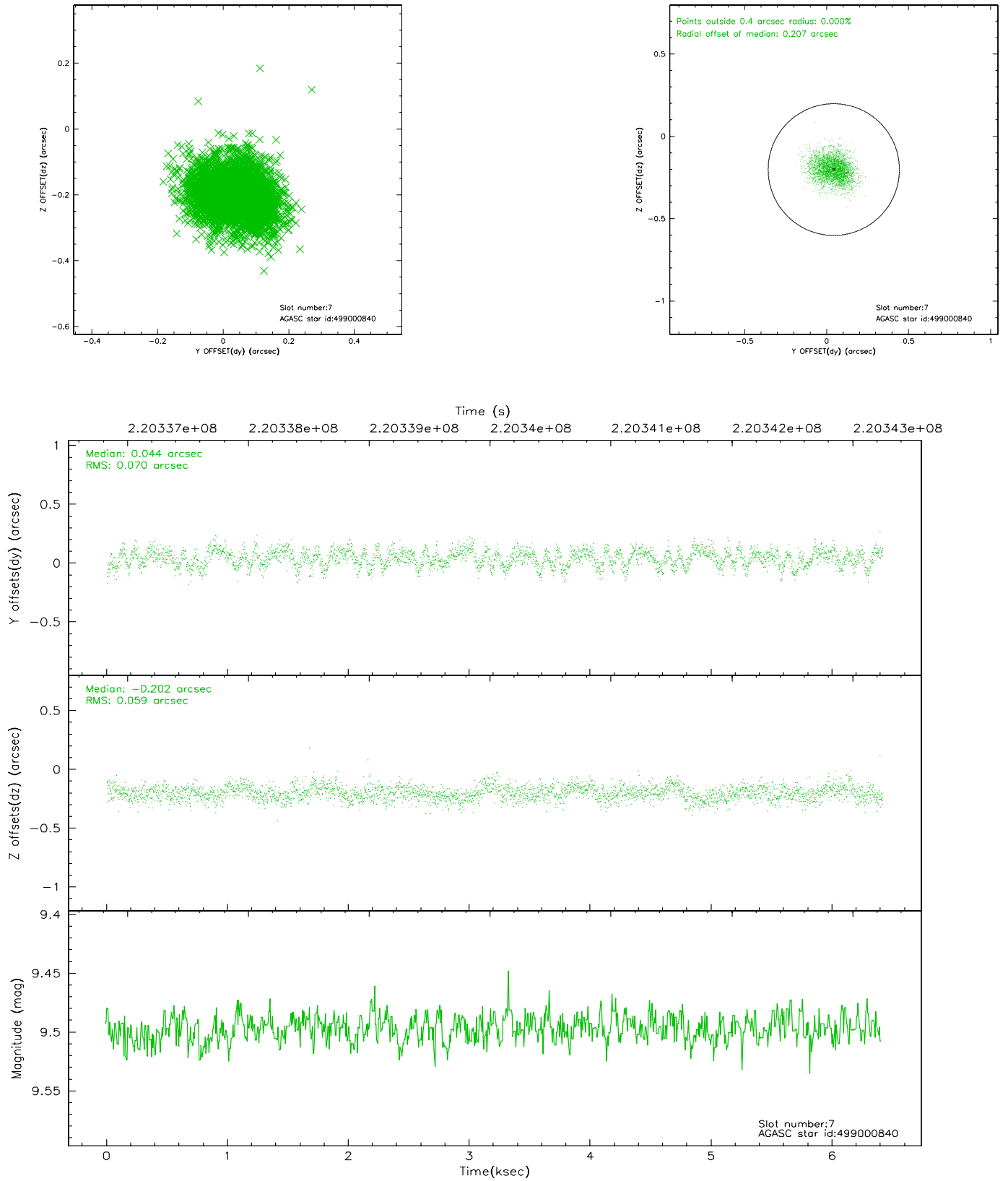
2.4.3 Slot 5



2.4.4 Slot 6

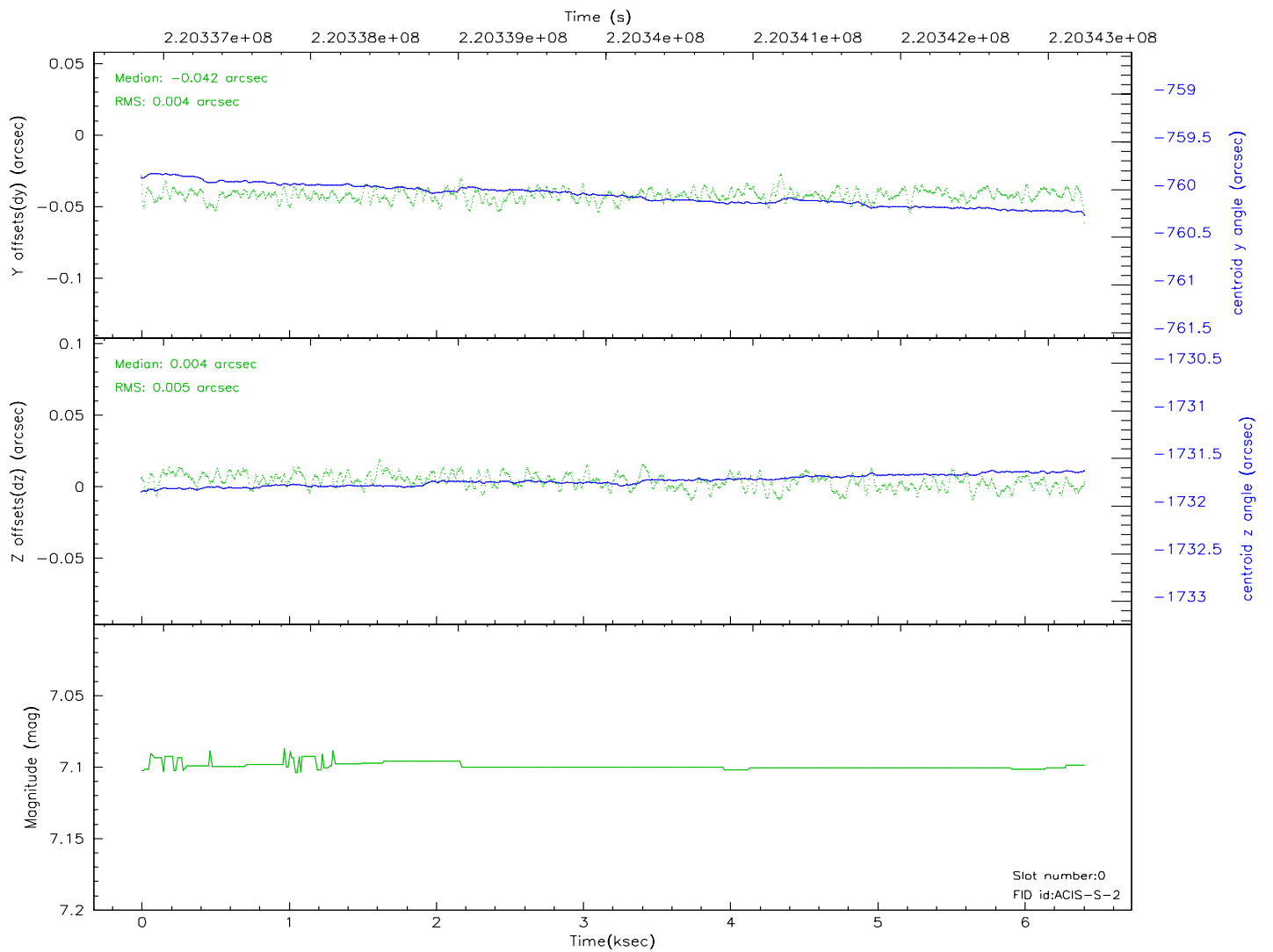
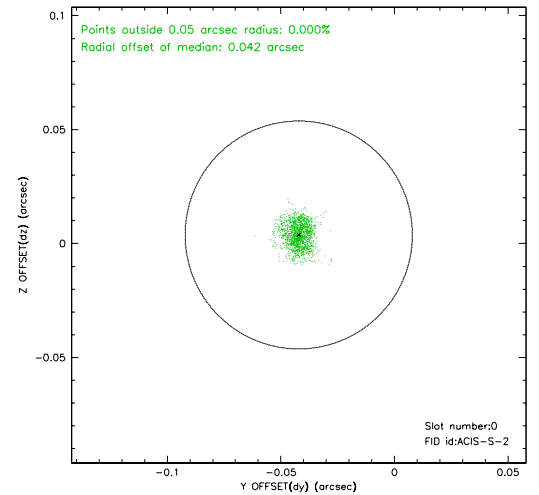
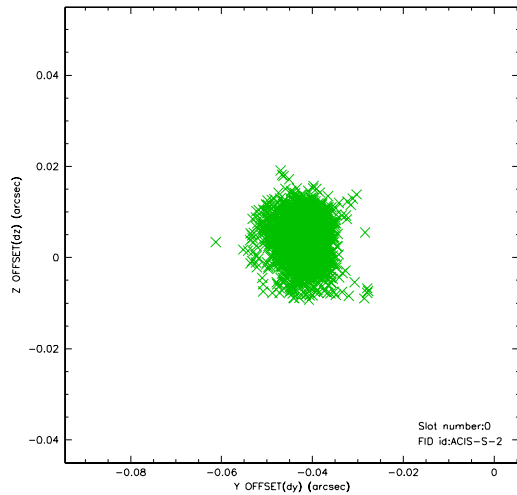


2.4.5 Slot 7

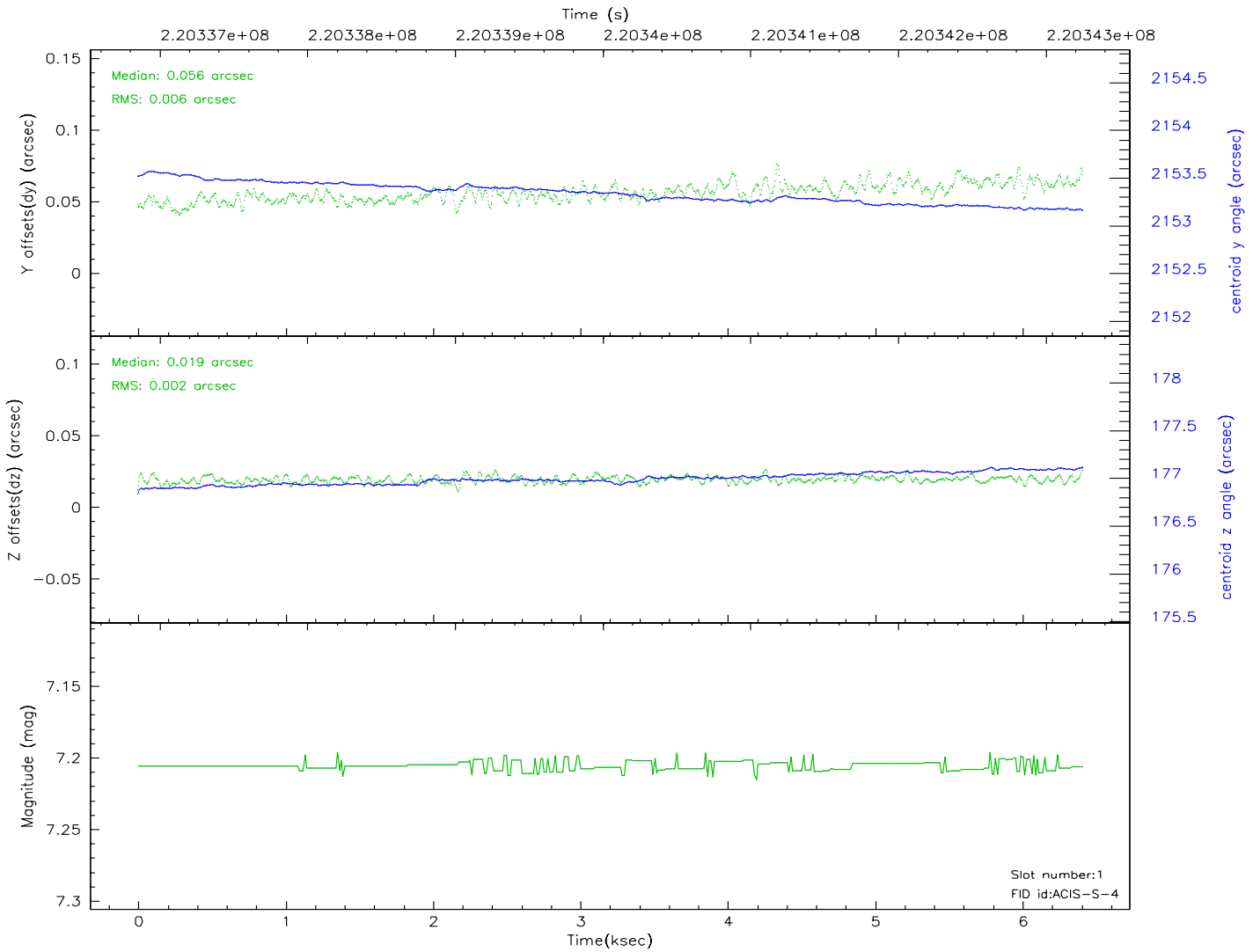
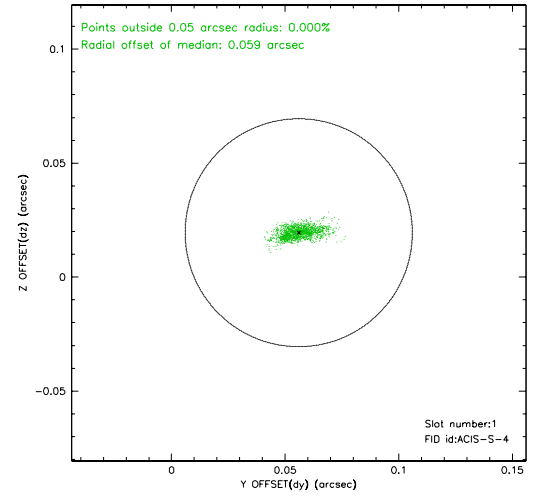
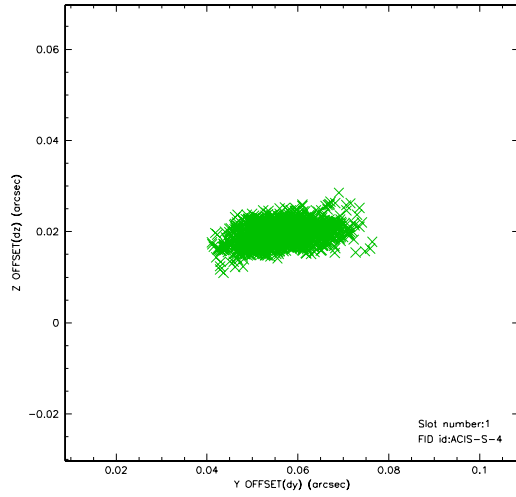


2.5 FID Slots

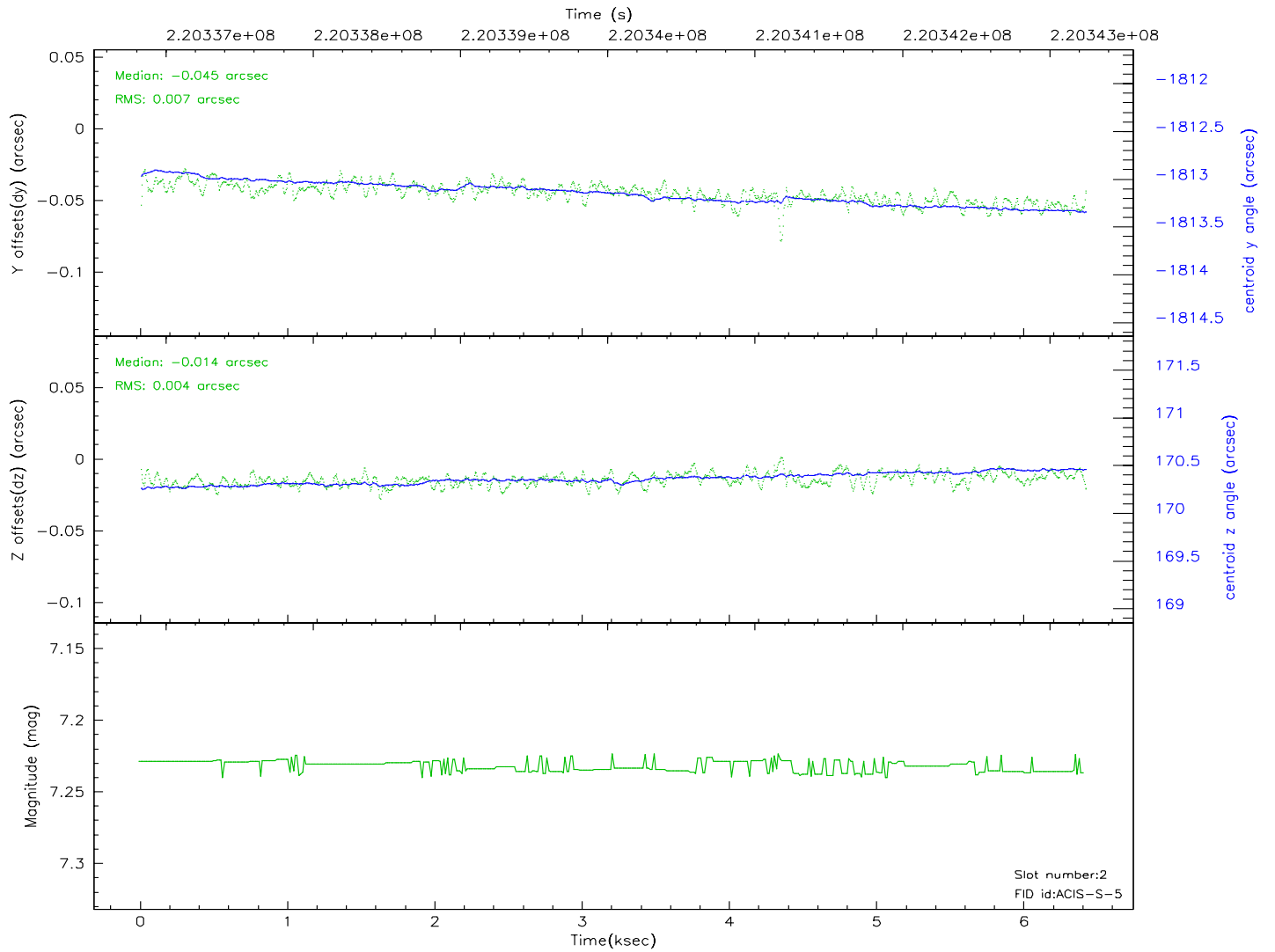
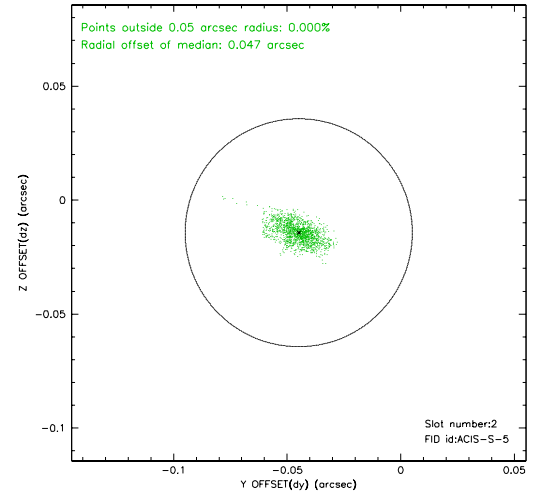
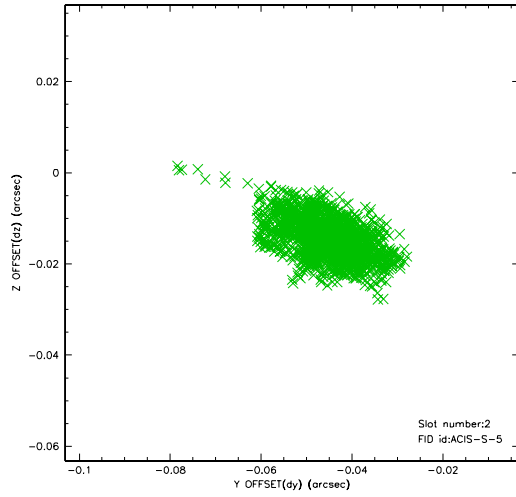
2.5.1 Slot 0



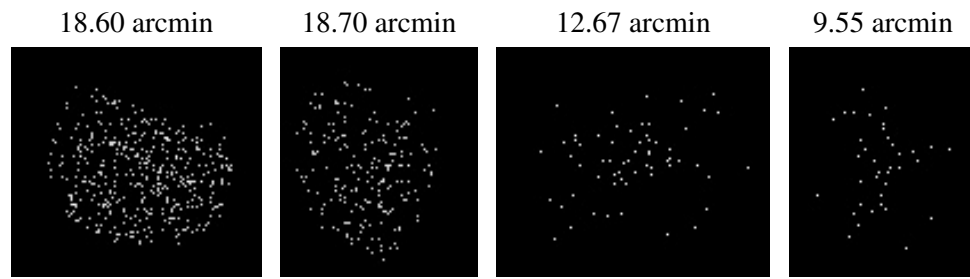
2.5.2 Slot 1



2.5.3 Slot 2



3 Point Sources



A Summary

A.1 Status

V&V Scientist	Beth Sundheim
V&V Date (YYYY-MM-DD)	2006.04.07
V&V Edition	1
V&V Disposition and Status	OK
V&V Charge Time	5.958399

A.2 Comments