

V&V Reference Report

L2 ASCDS Version : 8.5.1

Observation 5723 - L2 Version 4
Chandra X-Ray Center

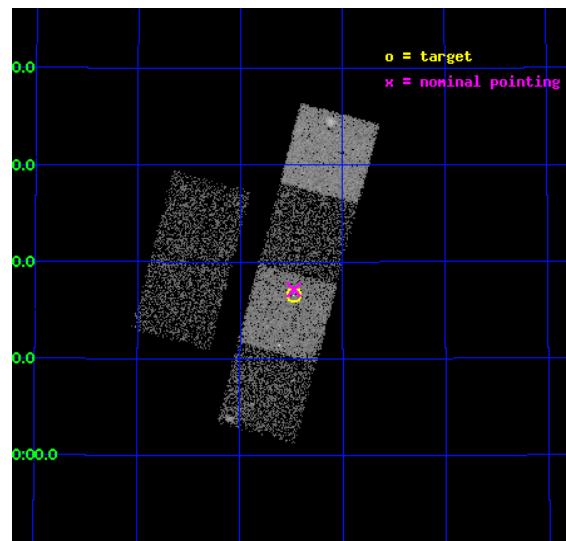
L2 Processing Date : Dec 15 2012

Contents

1	Front	2
2	OBI	3
2.1	OBI	3
2.1.1	Images	3
2.1.2	Bias	3
2.1.3	Parameters	4
2.1.4	Events	4
2.2	Compared Parameters	5
2.3	Aspect	6
2.4	Star Slots	9
2.4.1	Slot 3	9
2.4.2	Slot 4	10
2.4.3	Slot 5	11
2.4.4	Slot 6	12
2.4.5	Slot 7	13
2.5	FID Slots	14
2.5.1	Slot 0	14
2.5.2	Slot 1	15
2.5.3	Slot 2	16
A	Summary	17
A.1	Status	17
A.2	Comments	17

1 Front

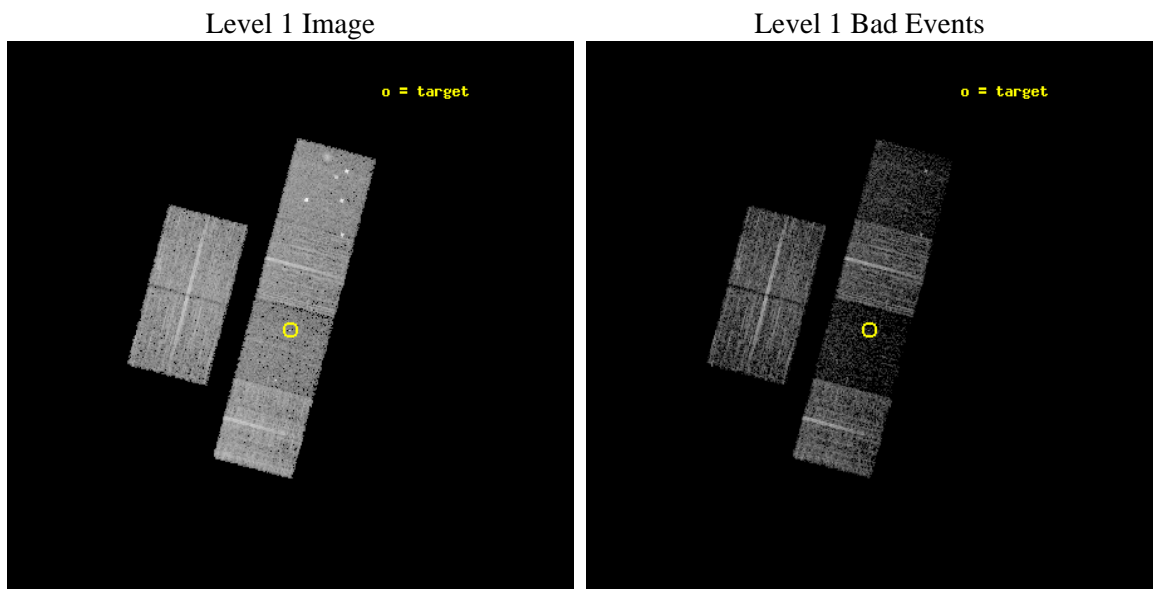
seq_num	701145	Sequence number
obs_id	5723	Observation id
title	What kind of Jets does Nature make? X-ray characterization of the FIRST Flat Spectrum Sample	Proposal title
observer	Dr. Giovanni Fossati	Principal investigator
object	87GB 0912+4429	Source name
dtcycle	0	
cycle	P	events from which exps? Prim/Second/Both
ra_targ	138.87	Observer's specified target RA [deg]
dec_targ	44.275833	Observer's specified target Dec [deg]
ra_nom	138.86890955691	Nominal RA [deg]
dec_nom	44.28545307741	Nominal Dec [deg]
roll_nom	104.89640044716	Nominal Roll [deg]
revision	4	Processing version of data
ontime	5753.2027514875	Sum of GTIs [s]
livetime	5680.3522340854	Livetime [s]
ontime2	5753.2437914908	Sum of GTIs [s]
ontime3	5753.0796314776	Sum of GTIs [s]
ontime5	5753.1617114842	Sum of GTIs [s]
ontime6	5753.1206714809	Sum of GTIs [s]
ontime7	5753.2027514875	Sum of GTIs [s]
ontime8	5749.7976112366	Sum of GTIs [s]
l2events	35848	Number of level 2 events



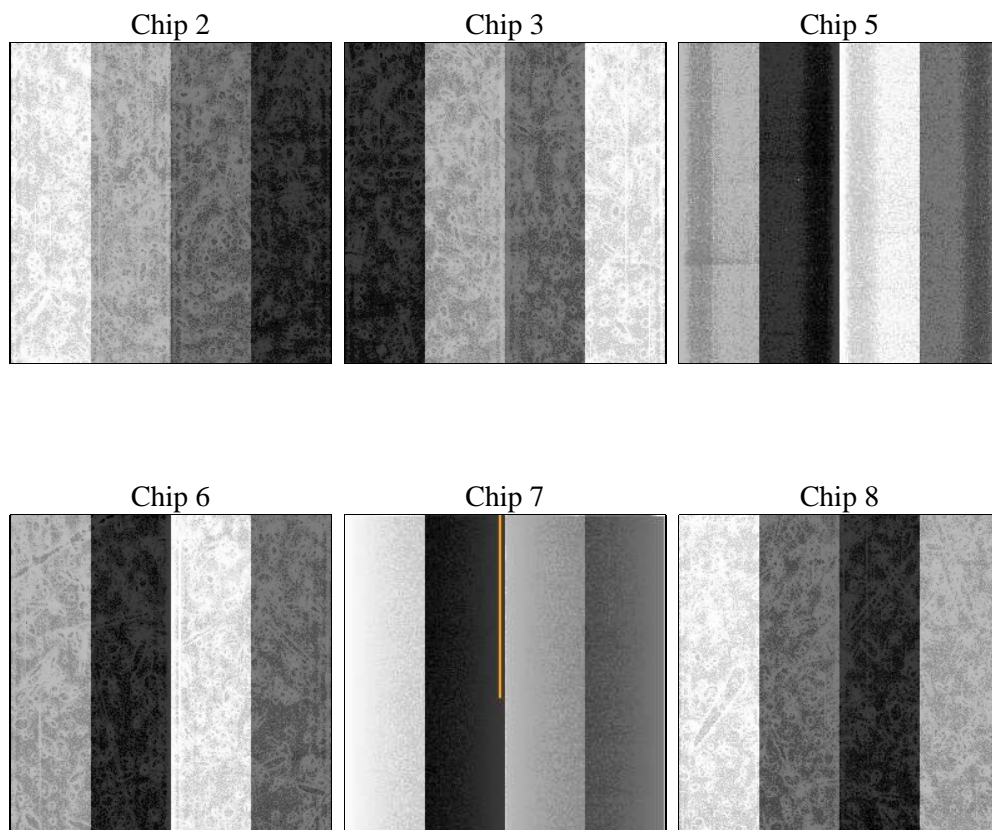
2 OBI

2.1 OBI

2.1.1 Images



2.1.2 Bias



2.1.3 Parameters

obi_num	0	Obi number	sched_exp_time	6000.000000	[s] Scheduled observation exposure time
ascdsver	8.5.1	Processing system revision	ontime	5753.2027514875	Sum of GTIs [s]
caldsver	4.5.5	 	ontime2	5753.2437914908	Sum of GTIs [s]
date	2012-12-15T04:35:29	Date and time of file creation	ontime3	5753.0796314776	Sum of GTIs [s]
revision	4	Processing version of data	ontime5	5753.1617114842	Sum of GTIs [s]
			ontime6	5753.1206714809	Sum of GTIs [s]
			ontime7	5753.2027514875	Sum of GTIs [s]
			ontime8	5749.7976112366	Sum of GTIs [s]
			l1events	189736	Number of level 1 events

2.1.4 Events

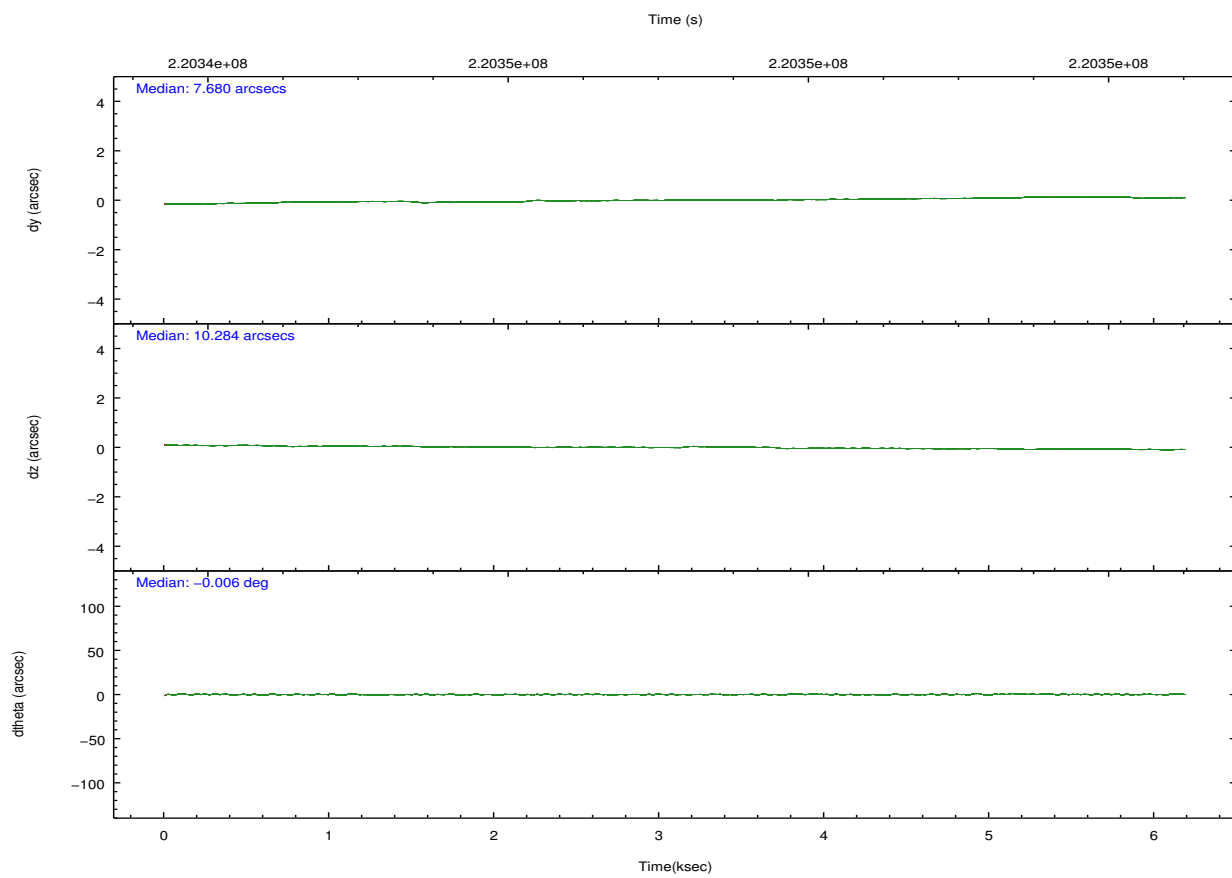
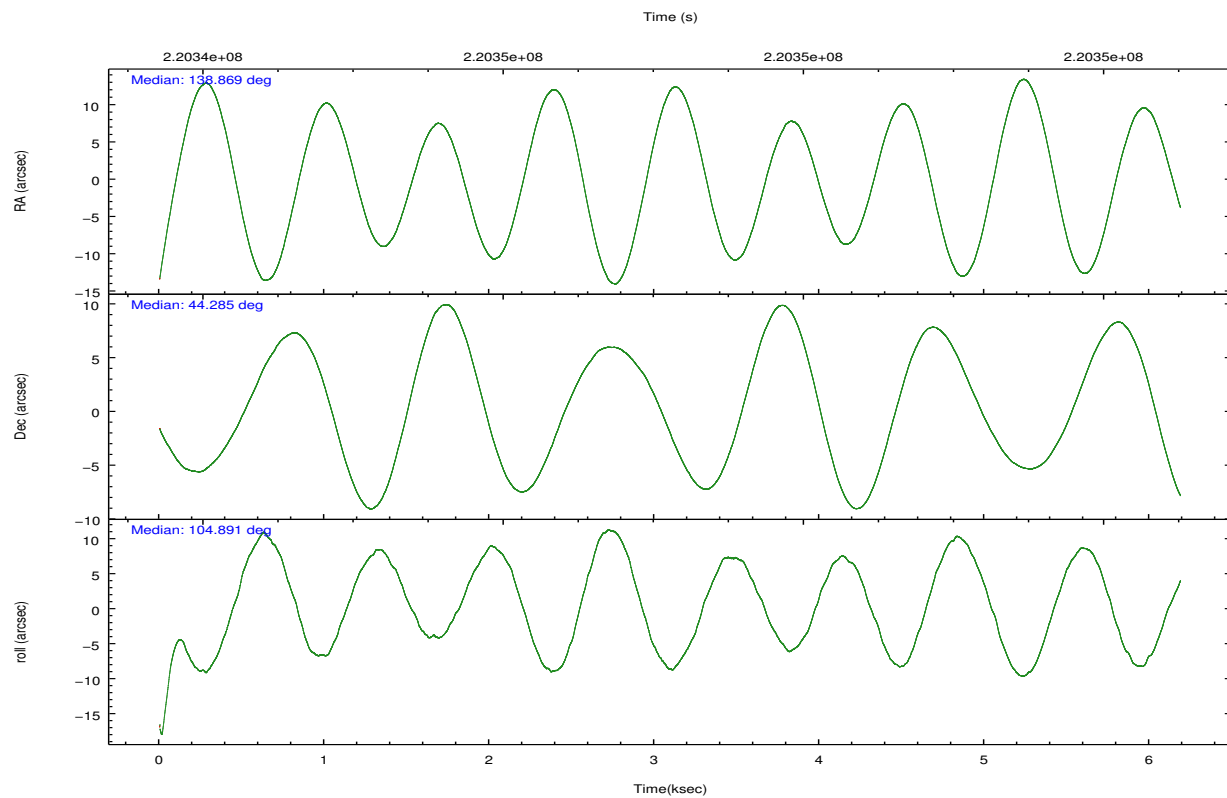
	ccd 2	ccd 3	ccd 5	ccd 6	ccd 7	ccd 8
level 1 events	34606	31157	31418	32881	18767	40907
rejected events	31835	28699	11156	30057	7625	31929
rejected %	91%	92%	35%	91%	40%	78%

	ccd 2	ccd 3	ccd 5	ccd 6	ccd 7	ccd 8
grade 0 events	1170	997	4990	1232	1525	2798
	3%	3%	15%	3%	8%	6%
grade 1 events	22	10	85	9	25	34
	0%	0%	0%	0%	0%	0%
grade 2 events	635	509	5734	570	2614	2082
	1%	1%	18%	1%	13%	5%
grade 3 events	299	291	991	304	1202	986
	0%	0%	3%	0%	6%	2%
grade 4 events	299	289	1001	309	1156	951
	0%	0%	3%	0%	6%	2%
grade 5 events	486	638	2388	635	1893	1083
	1%	2%	7%	1%	10%	2%
grade 6 events	372	373	7568	411	4660	2166
	1%	1%	24%	1%	24%	5%
grade 7 events	31323	28050	8661	29411	5692	30807
	90%	90%	27%	89%	30%	75%

2.2 Compared Parameters

Parameter	Planned	Actual	Parameter	Planned	Actual
Instrument	ACIS	ACIS	Obspar format version number	7	7
Detector	ACIS-235678	ACIS-235678	Obspar file type	PREDICTED	ACTUAL
Grating	NONE	NONE	Obspar update status	NONE	UPDATED
Data mode	VFAINT	VFAINT	Number of optional ACIS chips dropped	0	0
Observation mode	POINTING	POINTING	On-chip summing requested	N	N
[deg] Pointing RA	138.896067	138.8689095569069	Subarray requested	NONE	NONE
[deg] Pointing Dec	44.266439	44.28545307741048	Alternating exposures requested	N	N
[deg] Pointing Roll	104.720861	104.8964004471602	[s] Primary exposure time	0.000000	3.2
[mm] SIM focus pos	-0.684267	-0.6828225247311905			
[mm] SIM defocus	0	0.001444936568705701			
[mm] SIM translation stage pos	-190.132523	-190.1400660498719			
[mm] SIM translation stage offset	0	0.00754346686406393			
[s] Observation start time (MET)	220344209.184000	220343611.23582			
Observation start date	2004-12-25T06:42:25	2004-12-25T06:33:31			
[s] Observation end time (MET)	220350209.184000	220350565.86113			
Observation end date	2004-12-25T08:22:25	2004-12-25T08:29:25			
Read mode	TIMED	TIMED			

2.3 Aspect

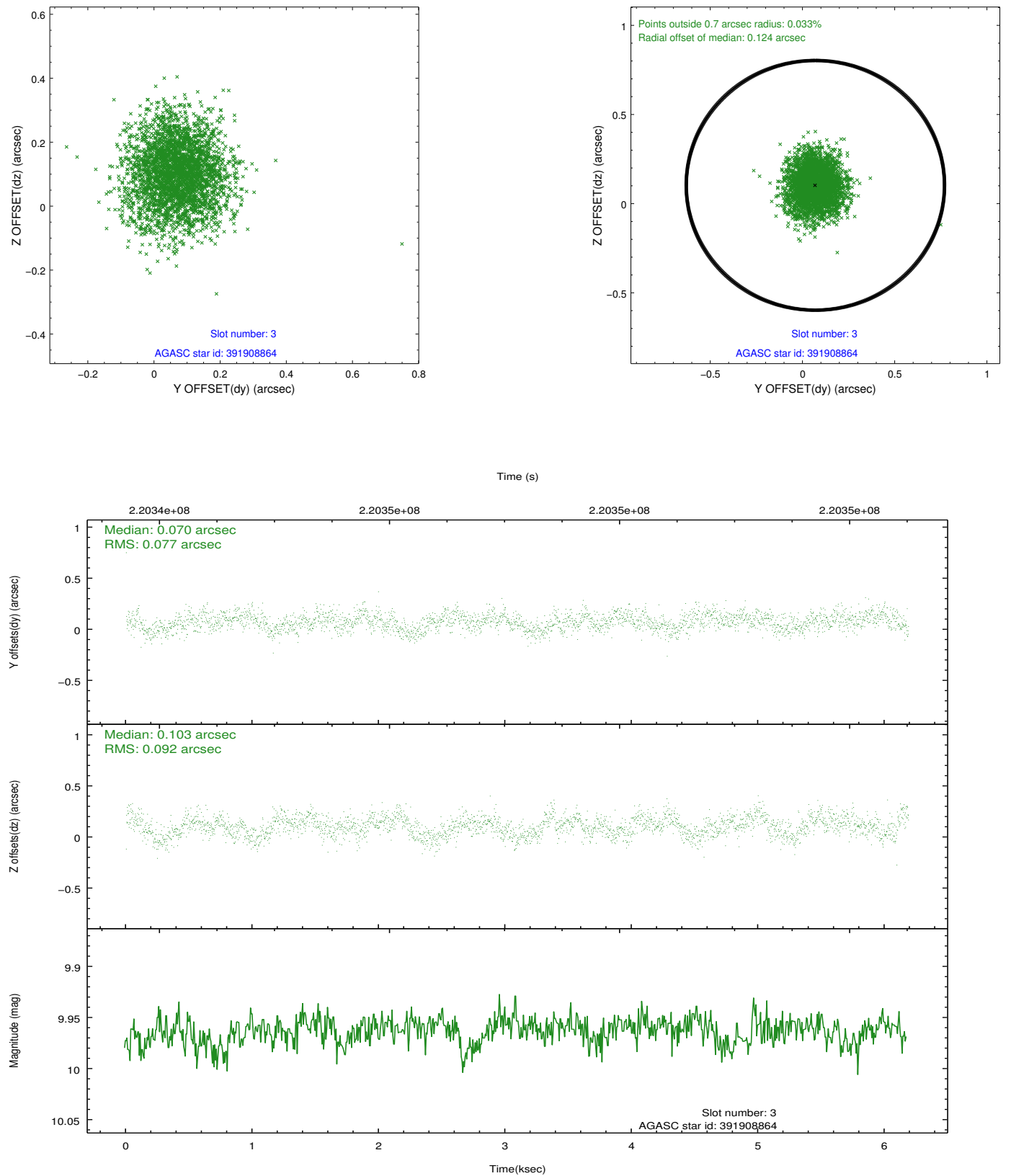


Slot Statistics

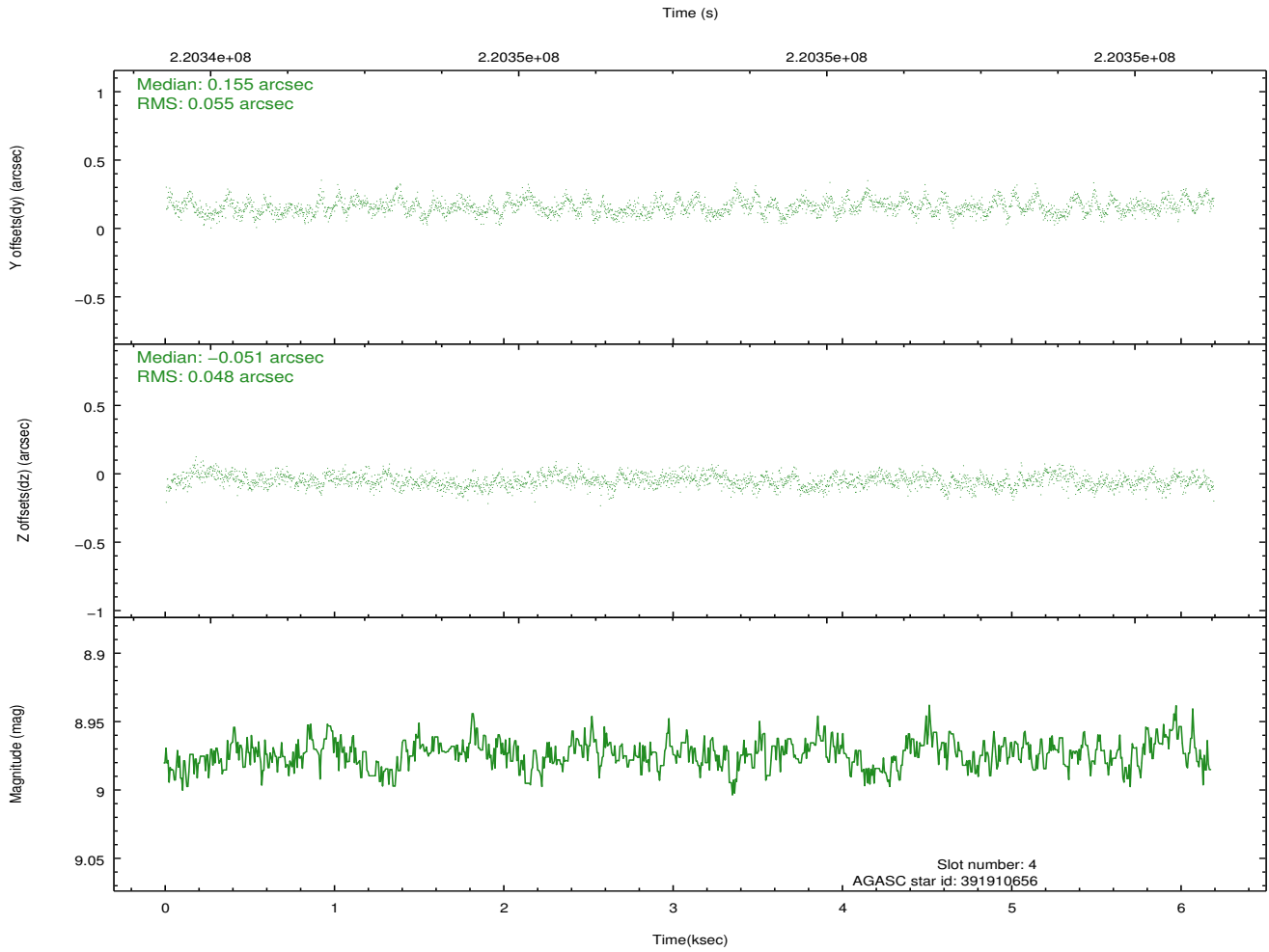
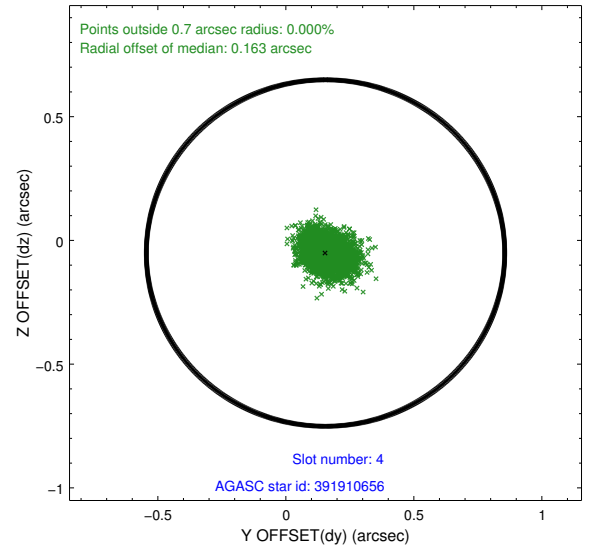
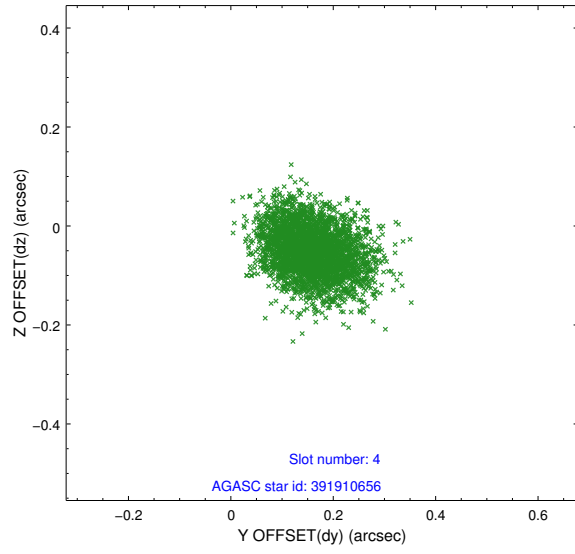
slot	status	id	mag	n_pts	med_dy	med_dz	dr1	dr2	ra	dec	mean_y	mean_z
0	FID	ACIS-S-2	7.10	1510	-0.048	-0.027	0.010	0.020	0.000000	0.000000	-760.45	-1731.58
1	FID	ACIS-S-4	7.21	1510	0.110	0.031	0.010	0.024	0.000000	0.000000	2152.50	176.05
2	FID	ACIS-S-5	7.23	1510	-0.091	0.004	0.009	0.015	0.000000	0.000000	-1812.16	170.68
3	GUIDE	391908864	9.96	3019	0.070	0.103	0.128	0.207	139.810958	43.824293	-2130.06	-1896.95
4	GUIDE	391910656	8.97	3013	0.155	-0.051	0.078	0.124	138.431486	43.827826	-1217.74	1566.96
5	GUIDE	391912112	7.74	3019	-0.160	-0.009	0.064	0.099	138.344023	44.310586	519.30	1334.66
6	GUIDE	391913136	9.03	3014	0.123	-0.132	0.075	0.120	138.783763	44.049913	-680.75	479.81
7	GUIDE	391917520	6.60	3018	-0.190	0.091	0.052	0.079	138.959805	44.697917	1460.86	-551.80

2.4 Star Slots

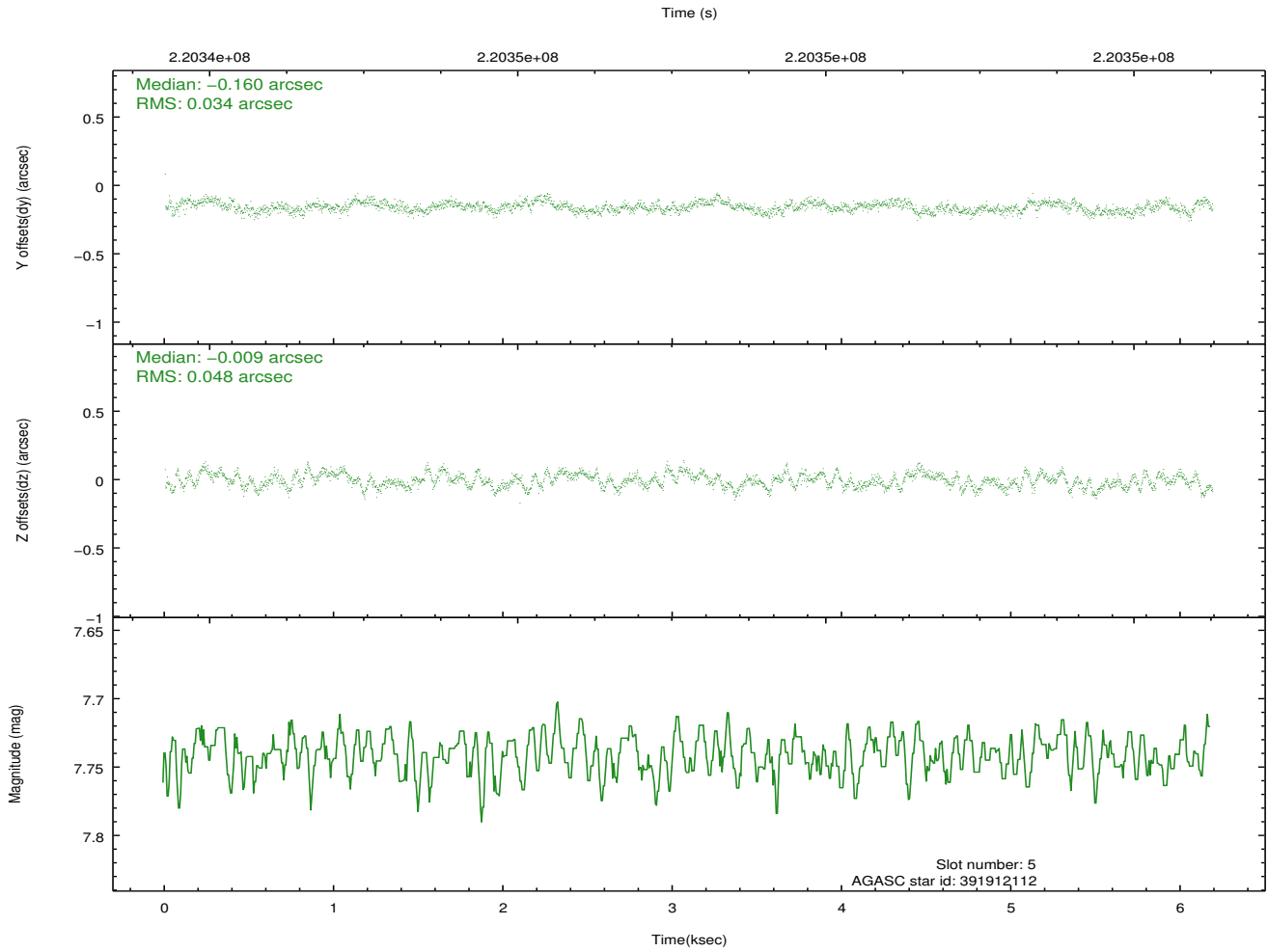
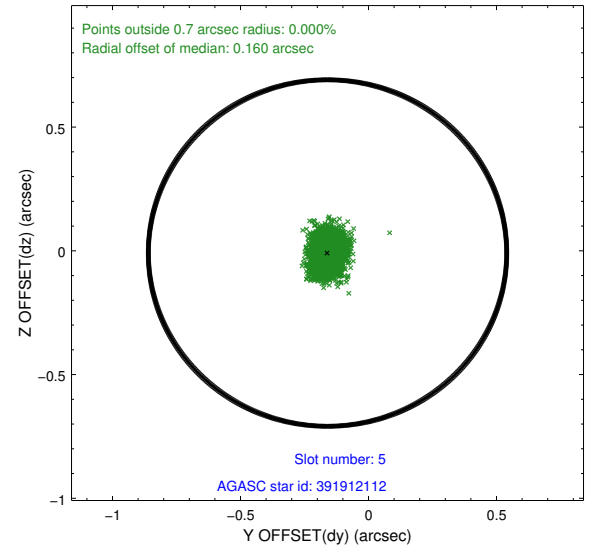
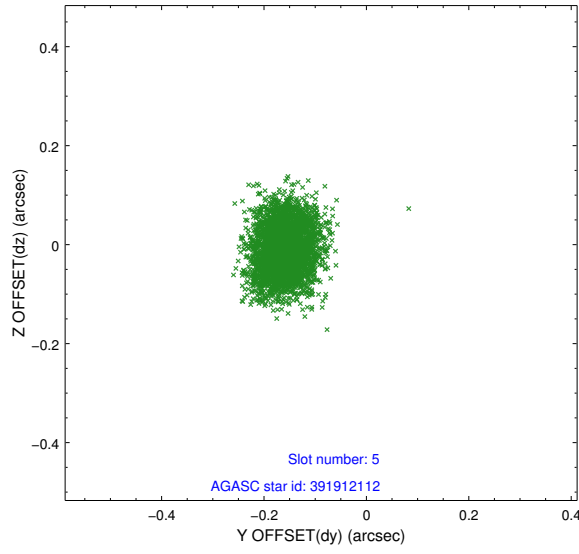
2.4.1 Slot 3



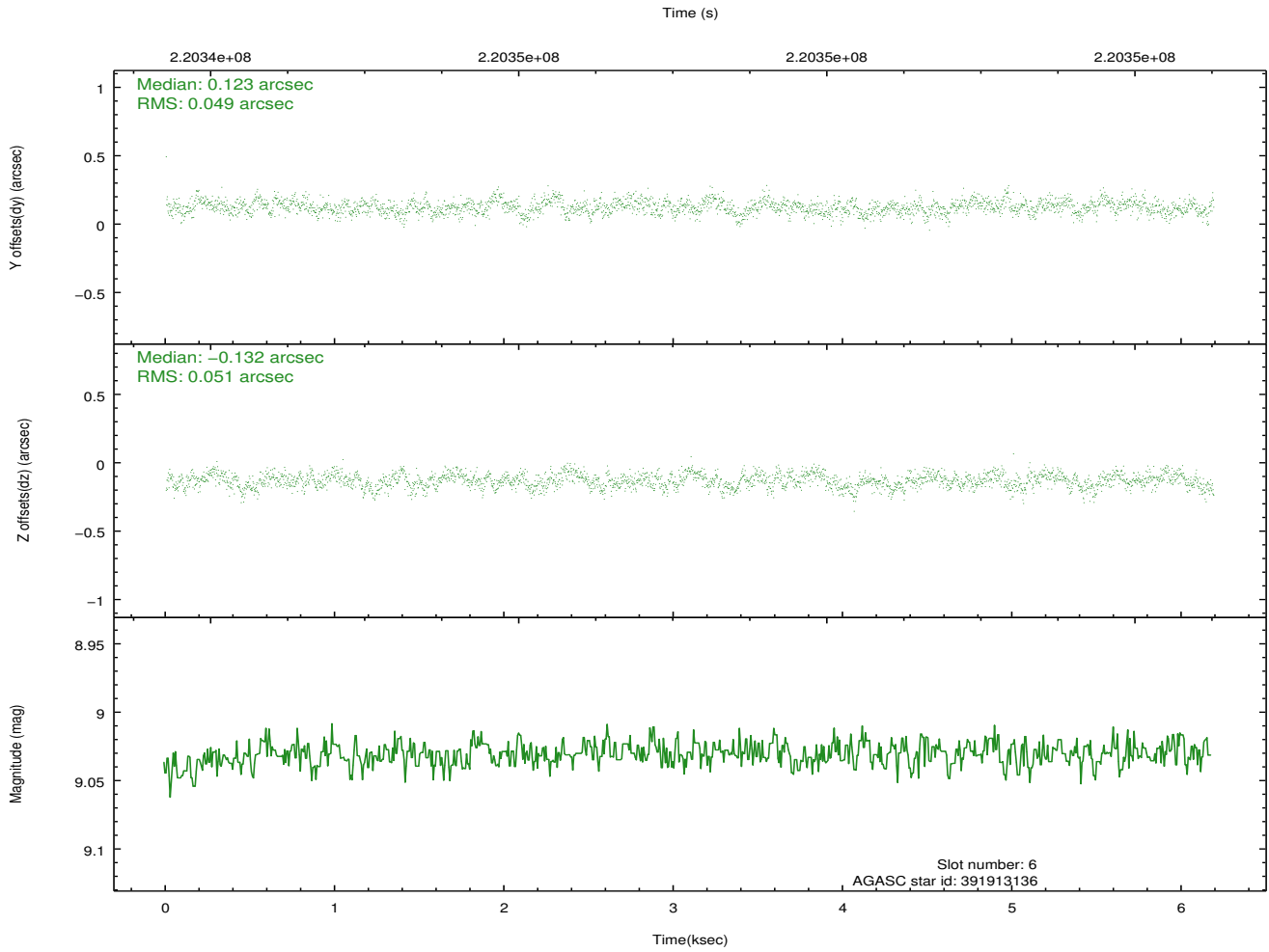
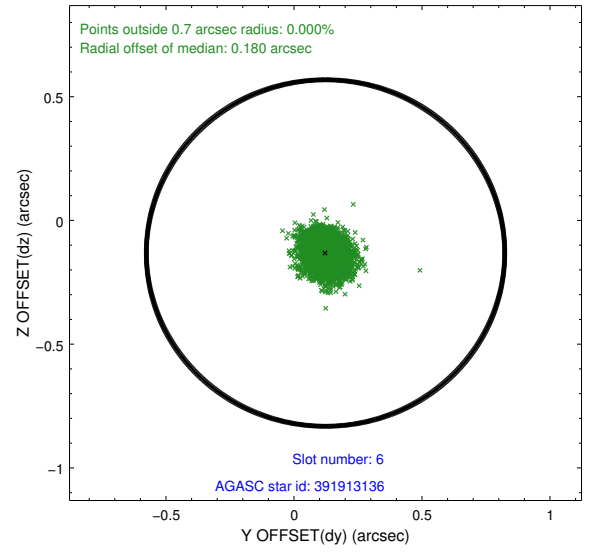
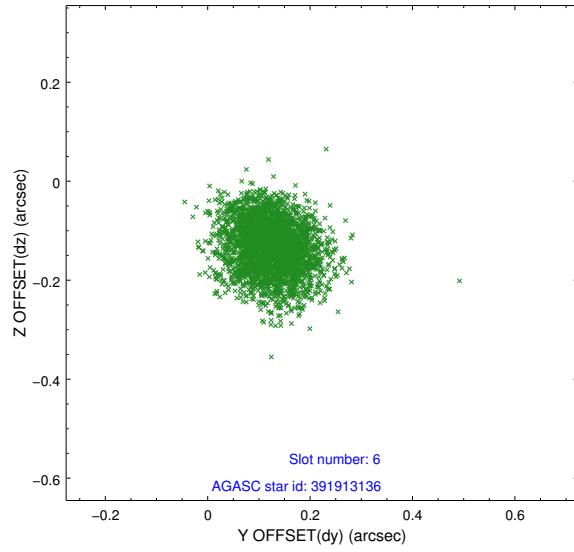
2.4.2 Slot 4



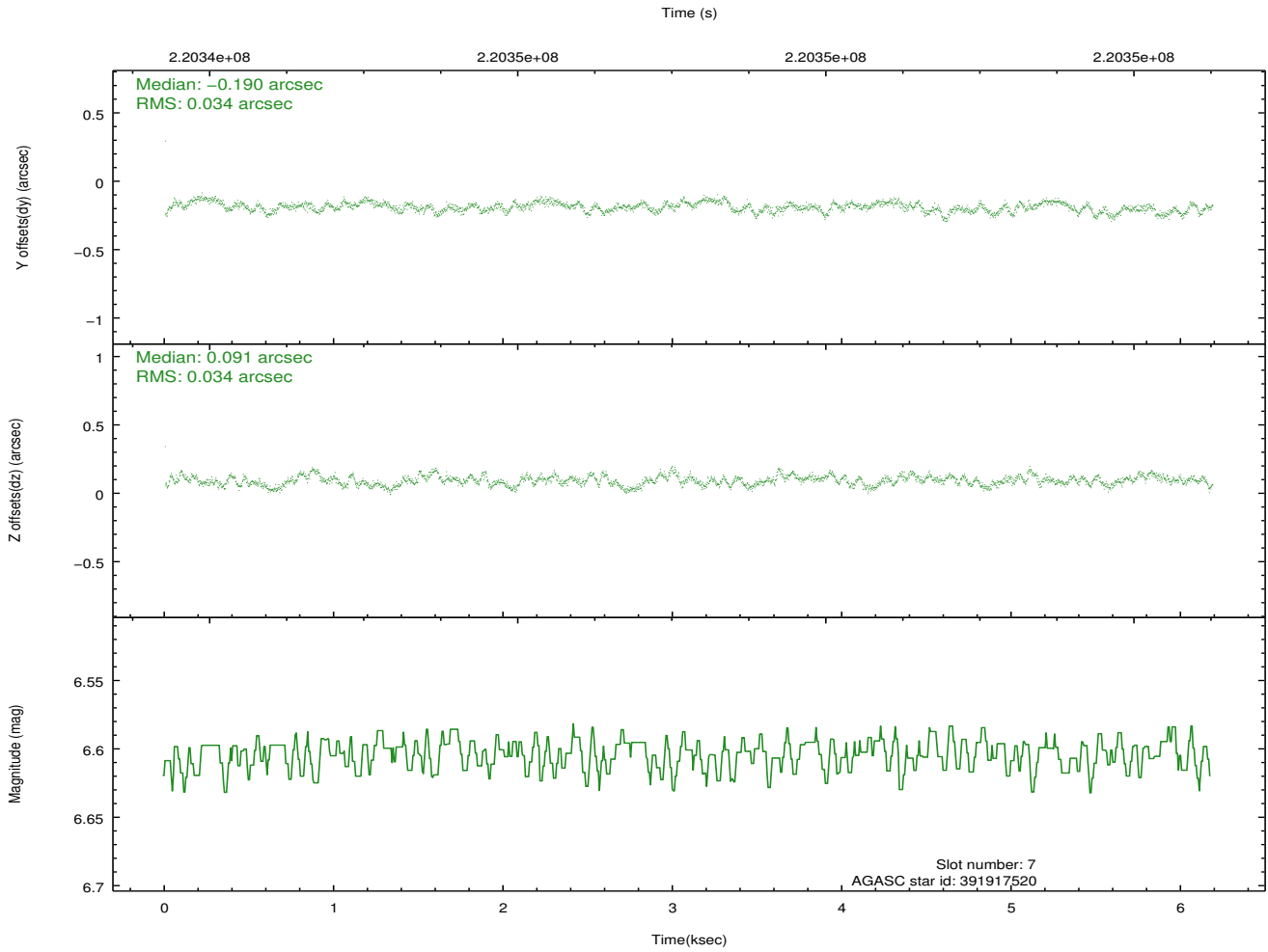
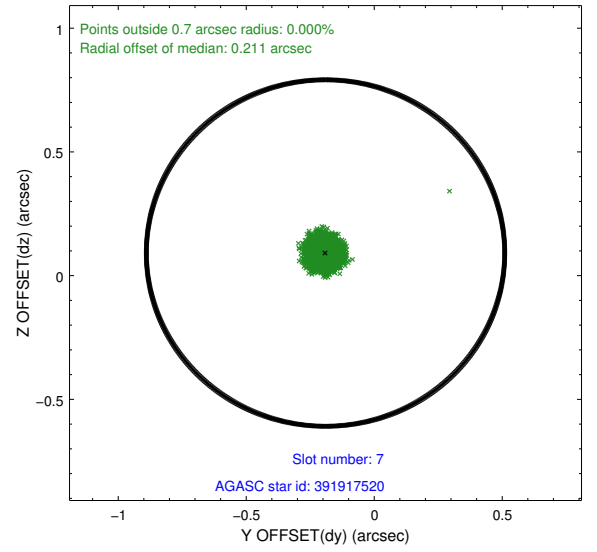
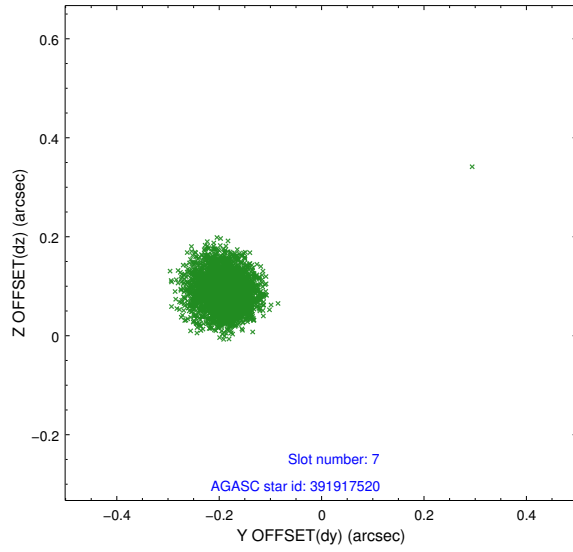
2.4.3 Slot 5



2.4.4 Slot 6

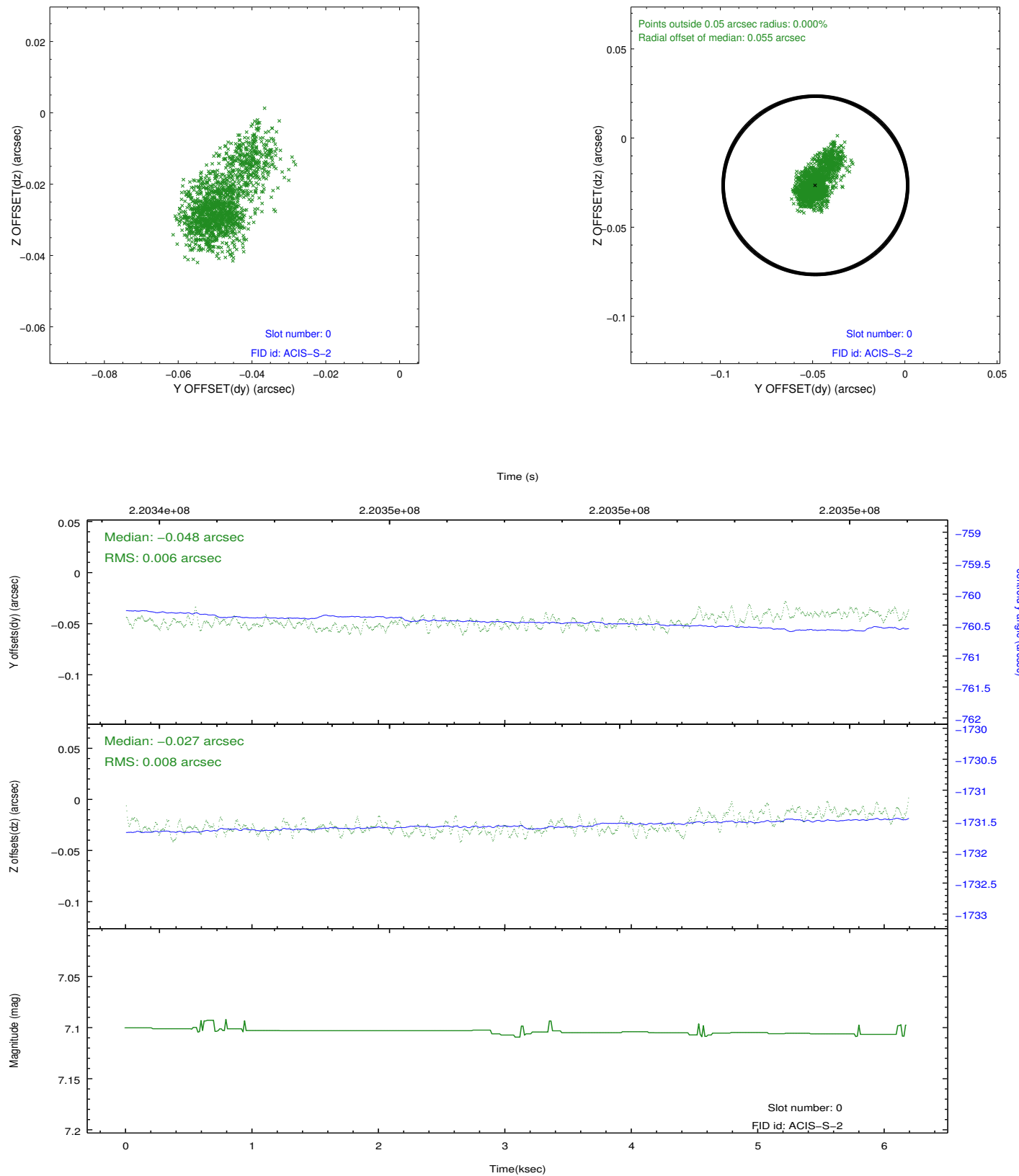


2.4.5 Slot 7

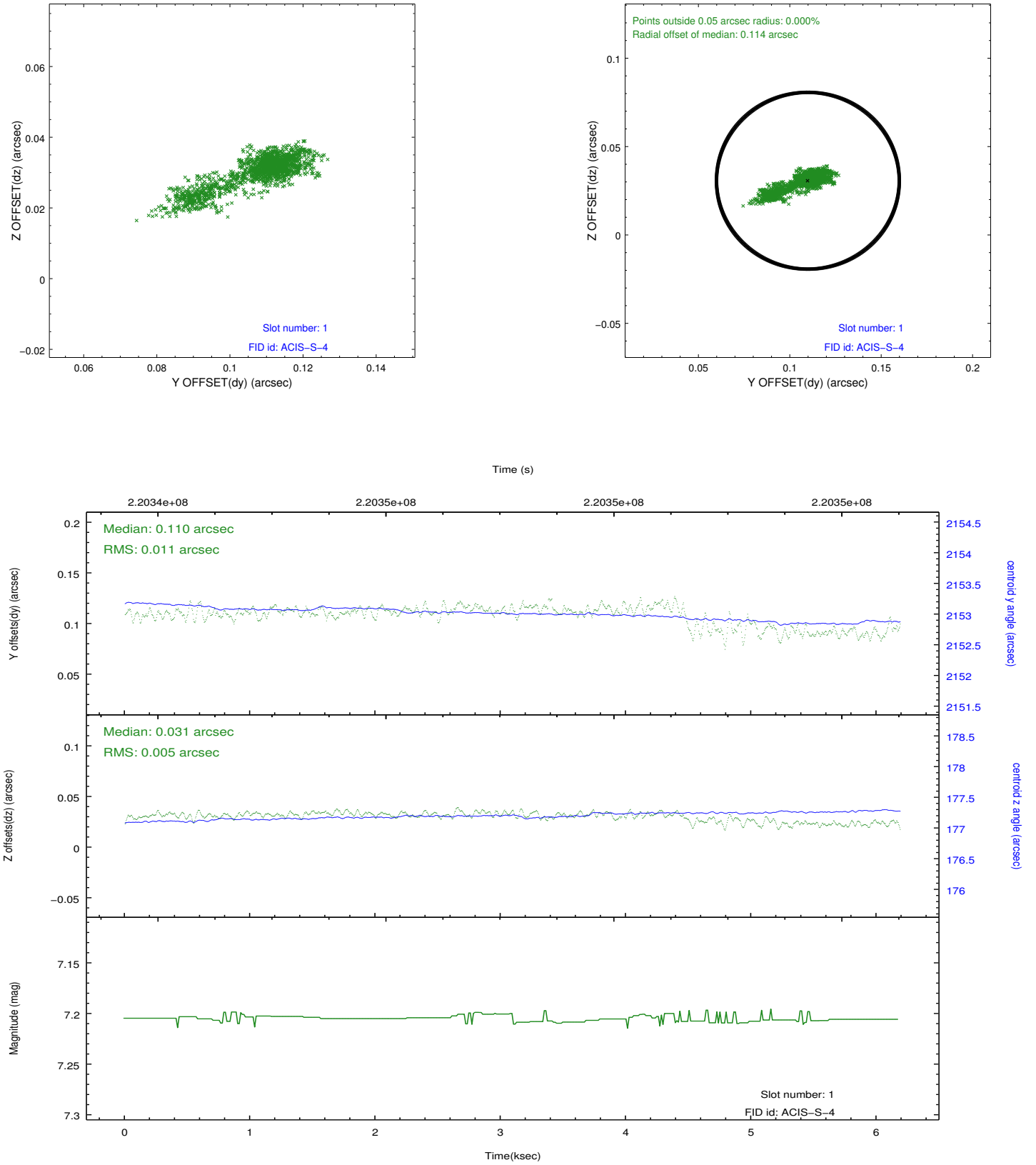


2.5 FID Slots

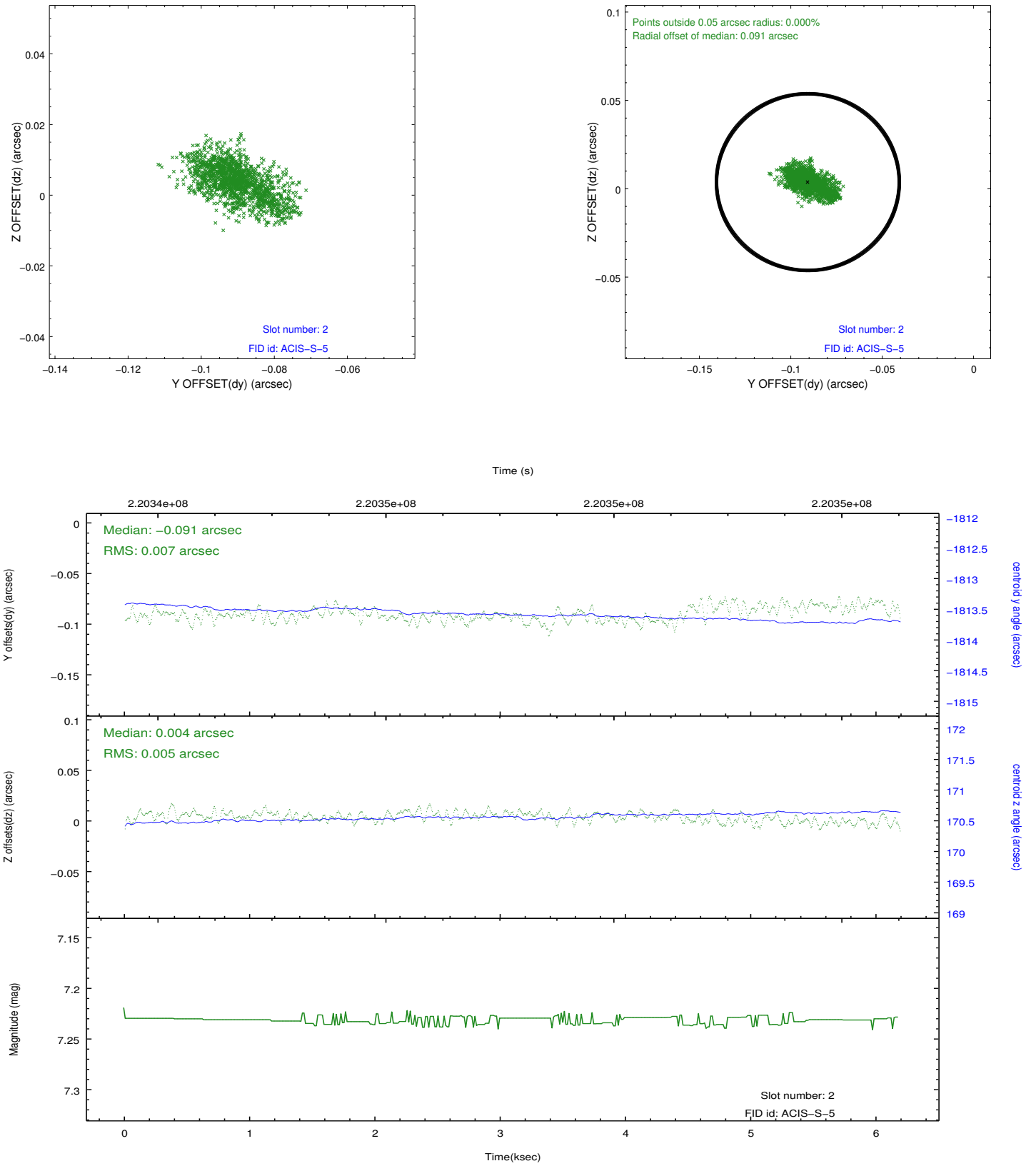
2.5.1 Slot 0



2.5.2 Slot 1



2.5.3 Slot 2



A Summary

A.1 Status

V&V Scientist	Jen Lauer
V&V Date (YYYY-MM-DD)	2013.01.08
V&V Edition	1
V&V Disposition and Status	OK
V&V Charge Time	5.753599

A.2 Comments