

V&V Reference Report

L2 ASCDS Version : 7.6.7

Observation 5718 - L2 Version 002
Chandra X-Ray Center

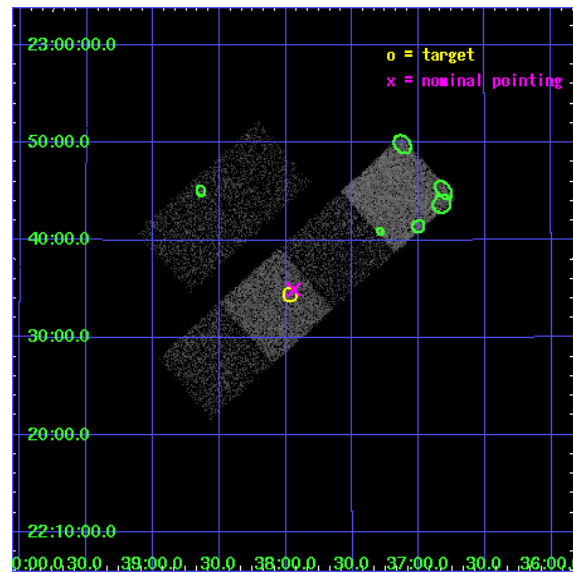
L2 Processing Date: Feb 27 2006

Contents

1	Front	2
2	OBI	3
2.1	OBI	3
2.1.1	Images	3
2.1.2	Bias	3
2.1.3	Parameters	4
2.1.4	Events	4
2.2	Compared Parameters	5
2.3	Aspect	6
2.4	Star Slots	9
2.4.1	Slot 3	9
2.4.2	Slot 4	10
2.4.3	Slot 5	11
2.4.4	Slot 6	12
2.4.5	Slot 7	13
2.5	FID Slots	14
2.5.1	Slot 0	14
2.5.2	Slot 1	15
2.5.3	Slot 2	16
3	Point Sources	17
A	Summary	18
A.1	Status	18
A.2	Comments	18

1 Front

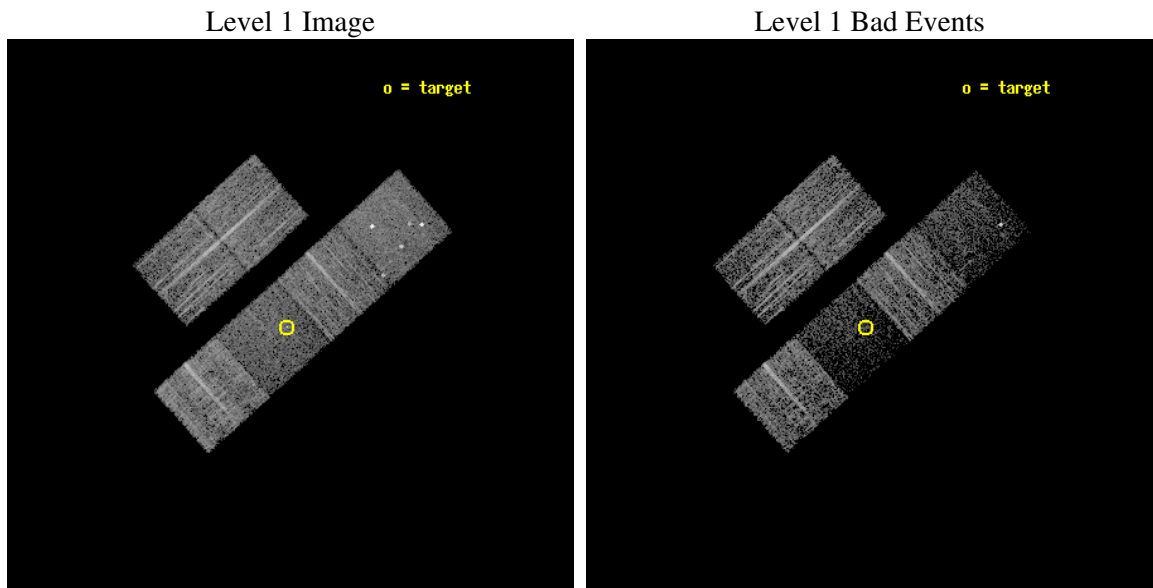
seq_num	701140
obs_id	5718
title	What kind of Jets does Nature make? X-ray characterization of the FIRST Flat Spectrum Sample
observer	Dr. Giovanni Fossati
object	87GB 1235+2251
dtcycle	0
cycle	P
ra_targ	189.49125
dec_targ	22.575111
ra_nom	189.4848535646
dec_nom	22.582733666484
roll_nom	138.11676344799
revision	2
ontime	4956.7999815345
livetime	4894.0339955417
ontime2	4956.7999815345
ontime3	4956.7999815345
ontime5	4956.7999815345
ontime6	4956.7999815345
ontime7	4956.7999815345
ontime8	4956.7999815345
l2events	27673



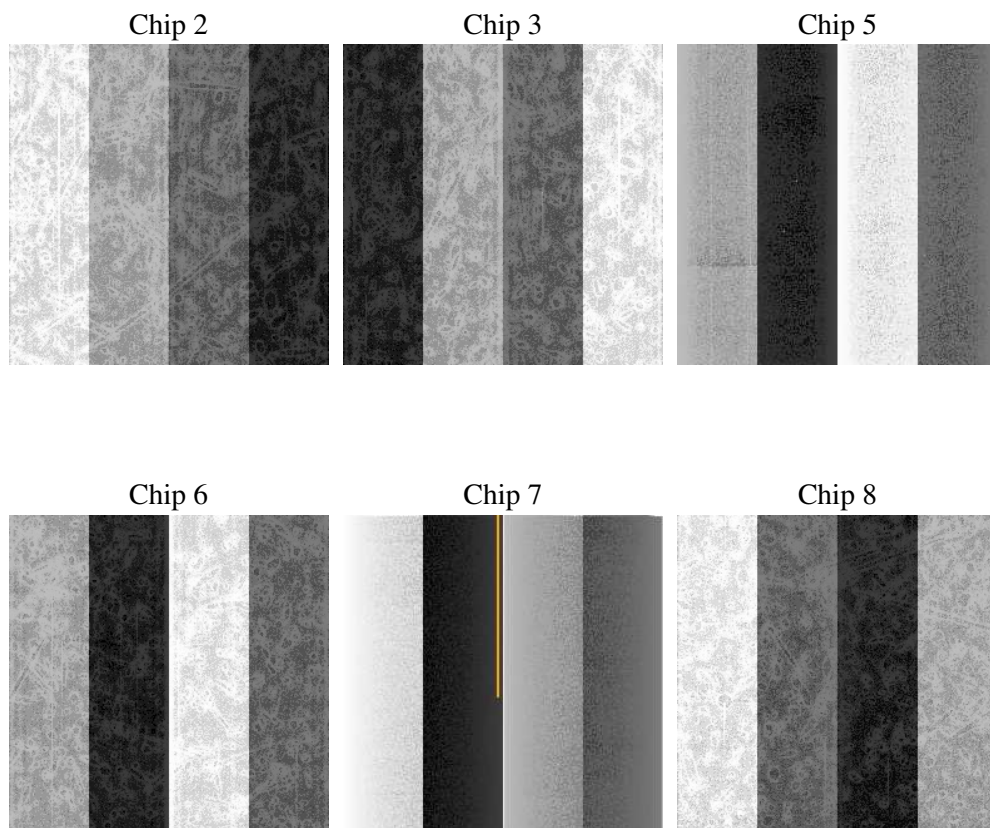
2 OBI

2.1 OBI

2.1.1 Images



2.1.2 Bias



2.1.3 Parameters

obi_num	1
ascdsver	7.6.7
caldsver	3.2.1
date	2006-02-27T07:00:16
revision	2

sched_exp_time	5000.000000
ontime	4961.9903050959
ontime2	4961.9903050959
ontime3	4961.990285188
ontime5	4961.9903050959
ontime6	4961.990285188
ontime7	4961.9903050959
ontime8	4961.9903050959
l1events	150762

2.1.4 Events

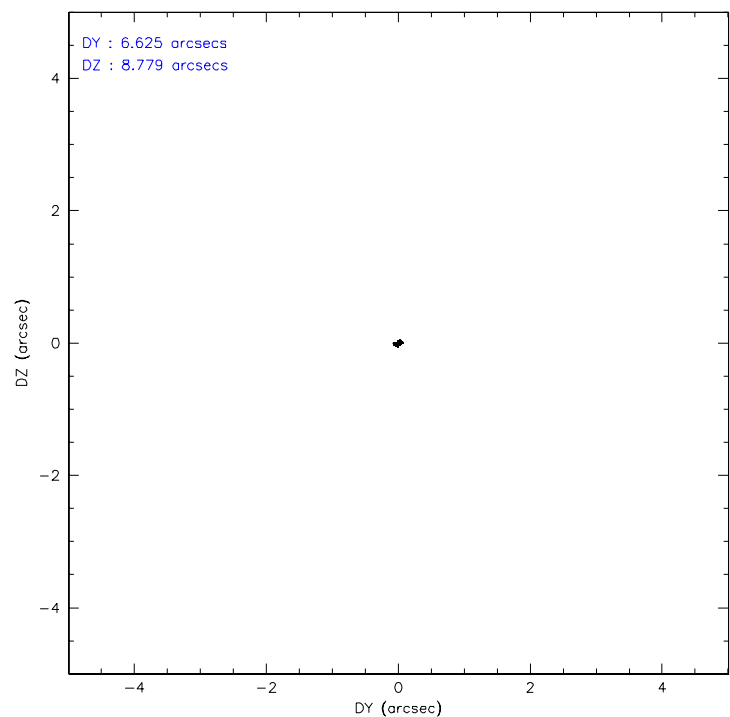
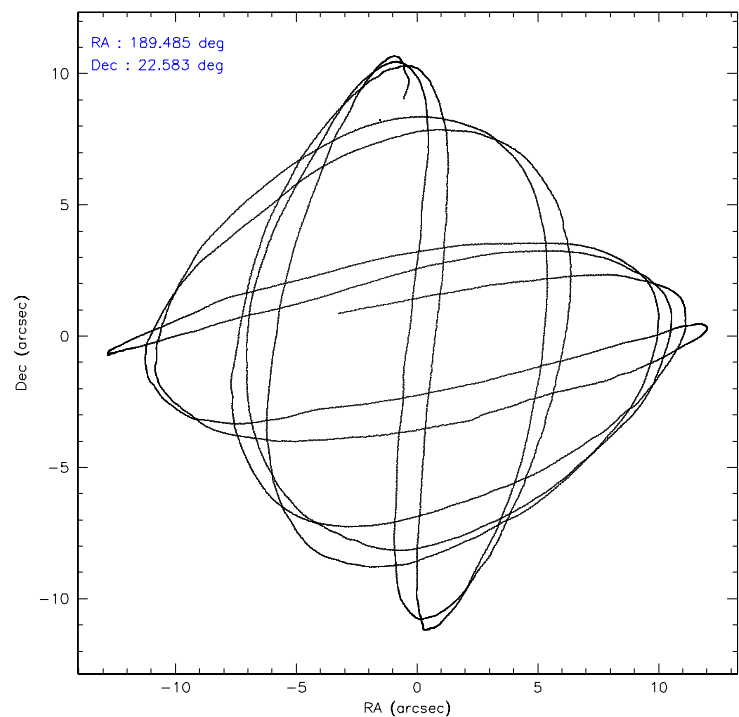
	ccd 2	ccd 3	ccd 5	ccd 6	ccd 7	ccd 8
level 1 events	27465	26354	24987	25043	15411	31502
rejected events	25304	24251	9948	22725	7162	23917
rejected %	92%	92%	39%	90%	46%	75%

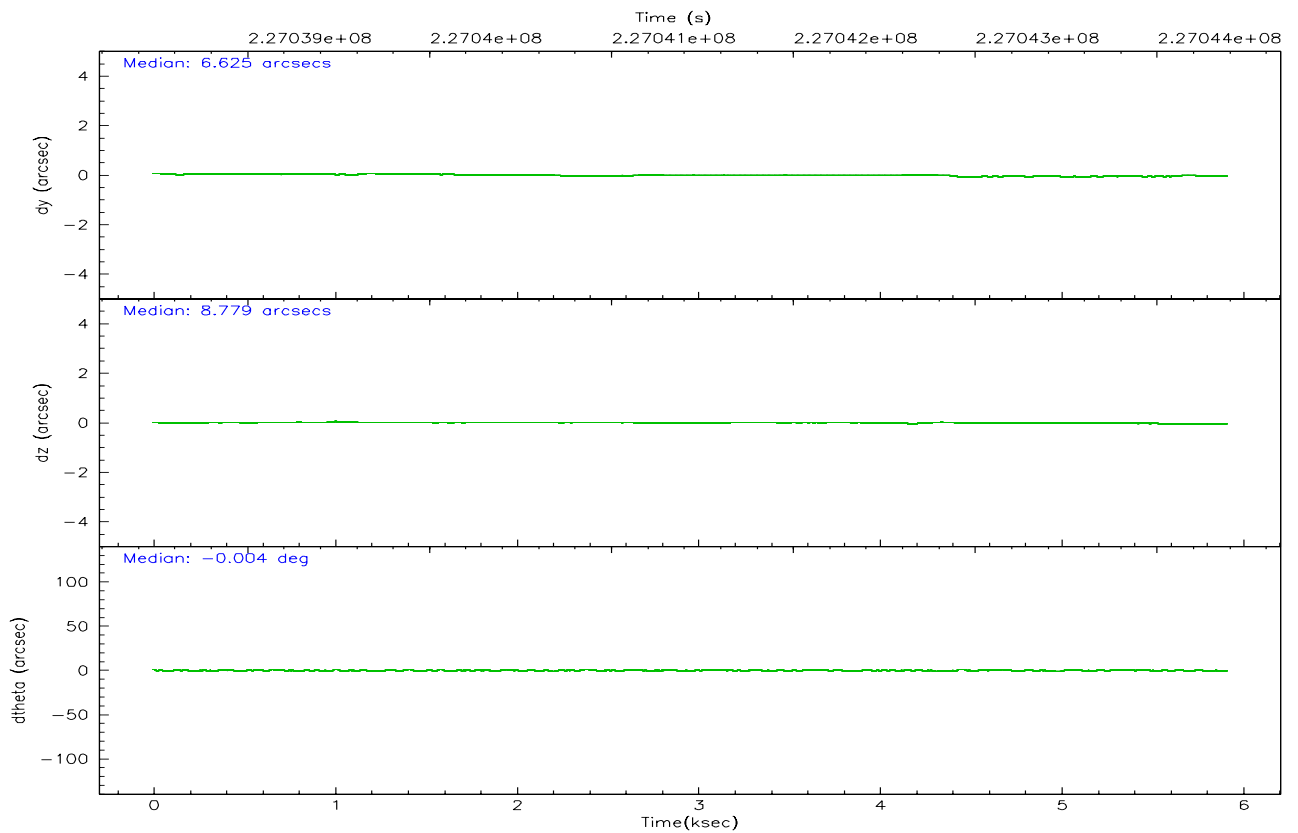
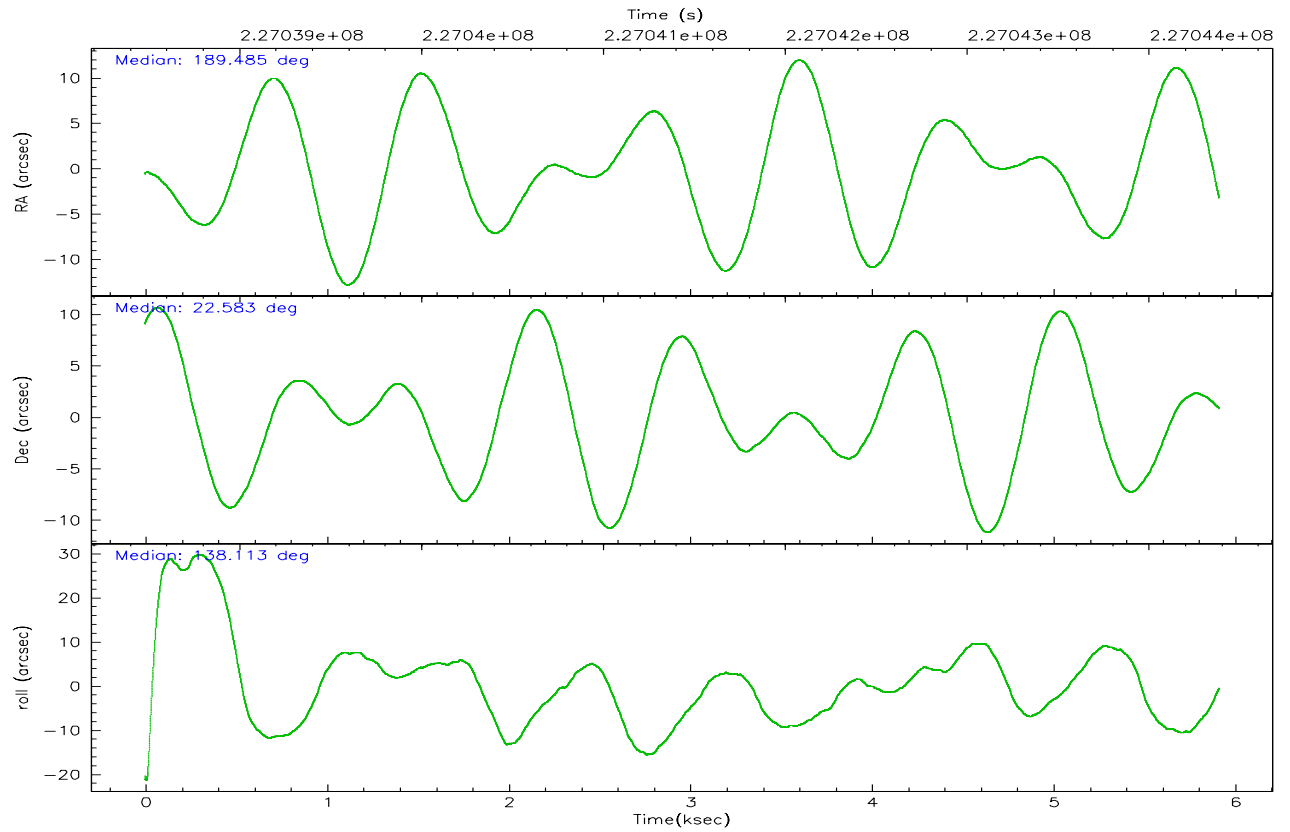
	ccd 2	ccd 3	ccd 5	ccd 6	ccd 7	ccd 8
grade 0 events	881	881	2738	910	766	2109
	3%	3%	10%	3%	4%	6%
grade 1 events	15	19	47	13	20	34
	0%	0%	0%	0%	0%	0%
grade 2 events	476	441	4991	503	2332	1713
	1%	1%	19%	2%	15%	5%
grade 3 events	217	241	438	261	601	817
	0%	0%	1%	1%	3%	2%
grade 4 events	255	227	402	256	568	777
	0%	0%	1%	1%	3%	2%
grade 5 events	423	504	1352	519	1251	877
	1%	1%	5%	2%	8%	2%
grade 6 events	335	314	6488	391	3988	2212
	1%	1%	25%	1%	25%	7%
grade 7 events	24863	23727	8531	22190	5885	22963
	90%	90%	34%	88%	38%	72%

2.2 Compared Parameters

Parameter	Planned	Actual	Parameter	Planned	Actual
Instrument	ACIS	ACIS	Obspar format version number	6	6
Detector	ACIS-235678	ACIS-235678	Obspar file type	PREDICTED	ACTUAL
Grating	NONE	NONE	Obspar update status	NONE	UPDATED
Data mode	VFAINT	VFAINT	On-chip summing requested	N	N
Observation mode	POINTING	POINTING	Subarray requested	NONE	NONE
Pointing RA	189.513742	189.4848535645978	Alternating exposures requested	N	N
Pointing Dec	22.577479	22.58273366648449	Primary exposure time	0.000000	3.2
Pointing Roll	137.949040	138.1167634479855			
SIM focus pos (mm)	-0.684267	-0.6828225247311905			
SIM defocus (mm)	0	0.001444936568705701			
SIM translation stage pos (mm)	-190.132523	-190.1425803651734			
SIM translation stage offset (mm)	0	0.01005778216563158			
Observation start time	227039389.184000	227038062.32583			
Observation start date	2005-03-12T18:28:45	2005-03-12T18:07:42			
Observation end time	227044389.184000	227045345.46366			
Observation end date	2005-03-12T19:52:05	2005-03-12T20:09:05			
Read mode	TIMED	TIMED			

2.3 Aspect



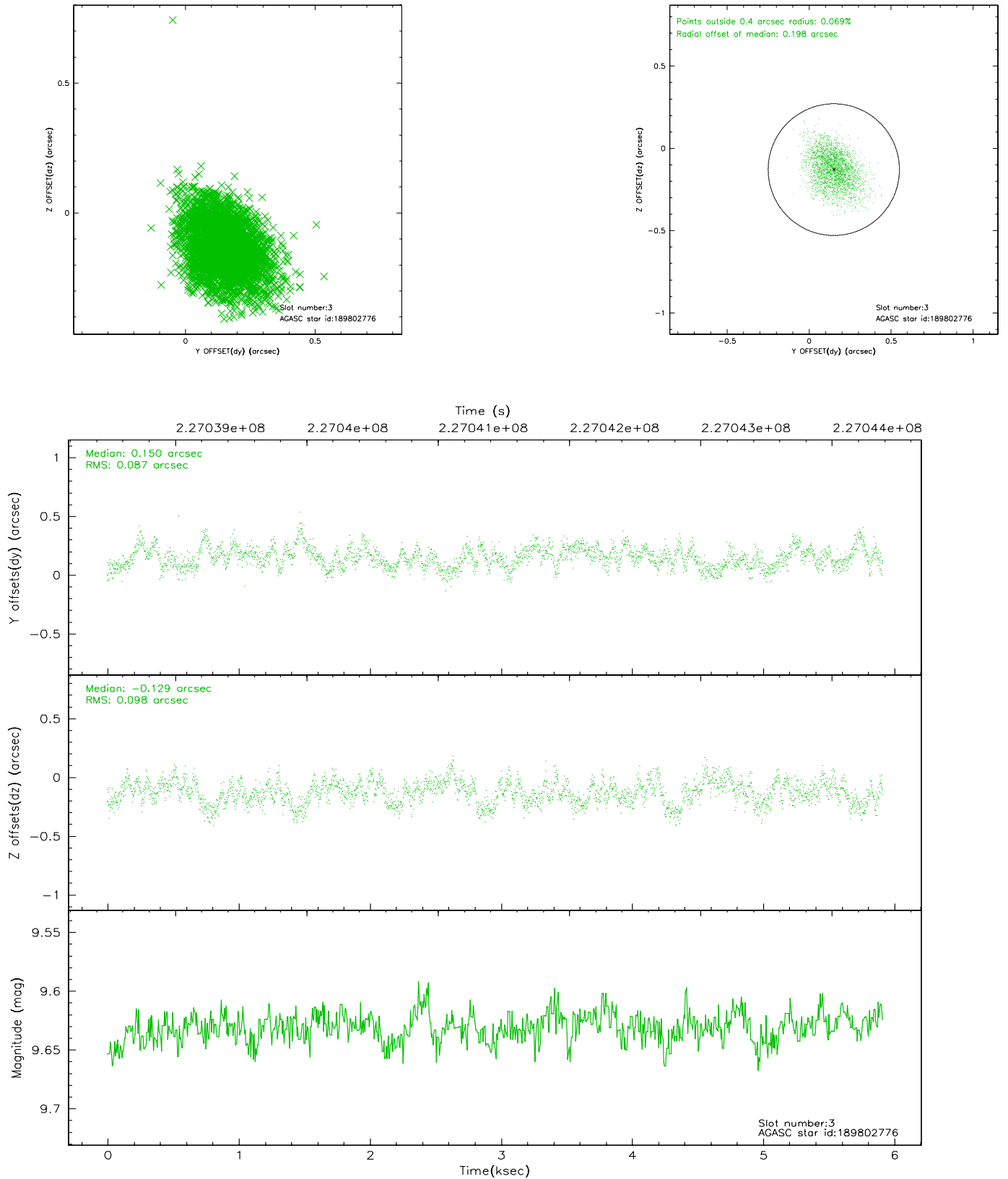


Slot Statistics

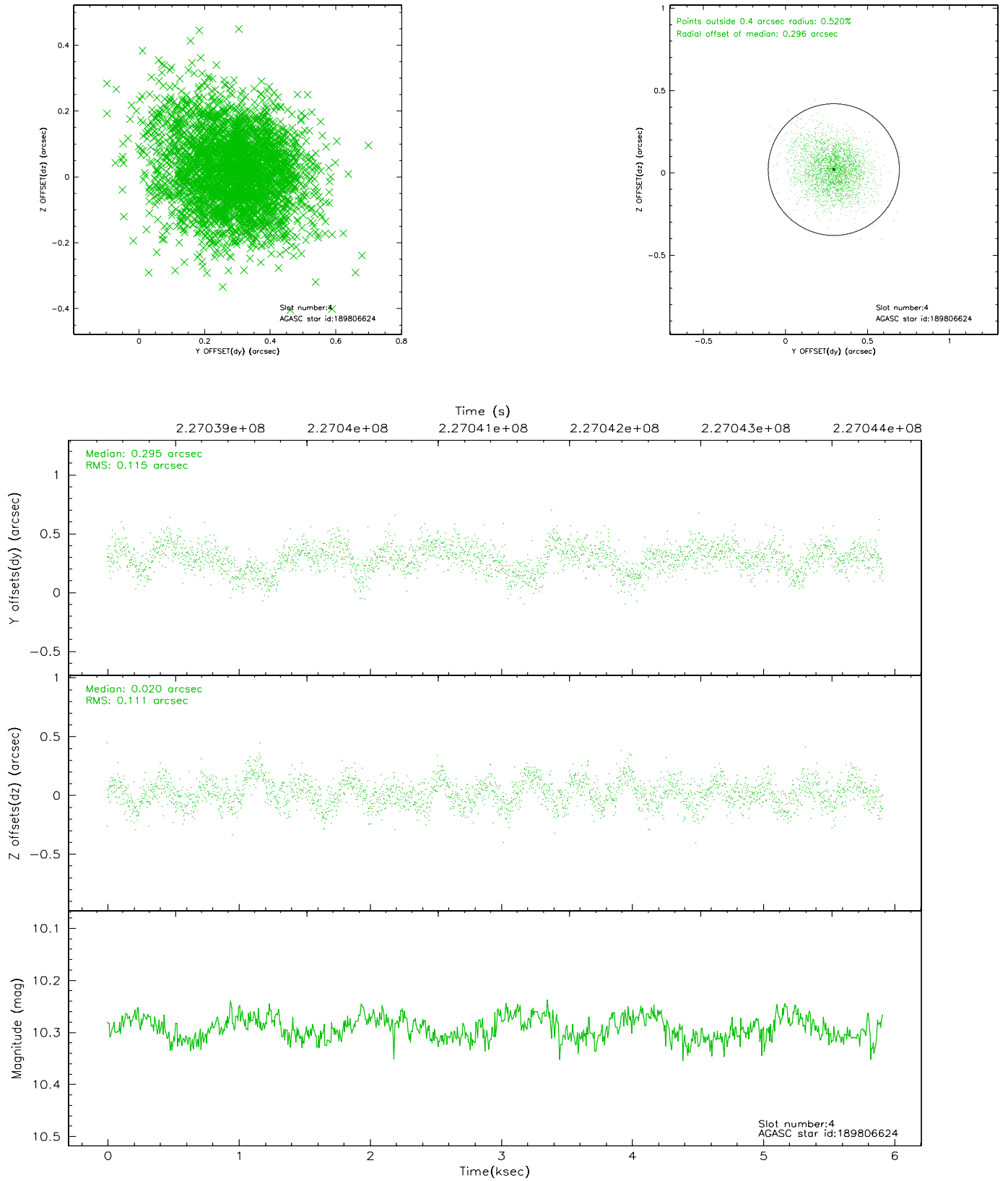
slot	status	id	mag	n_pts	med_dy	med_dz	dr1	dr2	ra	dec	mean_y	mean_z
0	FID	ACIS-S-2	7.10	1443	-0.028	-0.025	0.006	0.010	0.000000	0.000000	-759.39	-1729.96
1	FID	ACIS-S-4	7.21	1443	0.045	0.020	0.005	0.009	0.000000	0.000000	2153.50	177.53
2	FID	ACIS-S-5	7.23	1443	-0.049	0.014	0.006	0.010	0.000000	0.000000	-1810.96	172.34
3	GUIDE	189802776	9.63	2887	0.150	-0.129	0.139	0.222	188.981383	22.262186	558.84	2029.22
4	GUIDE	189806624	10.29	2884	0.295	0.020	0.167	0.280	189.934725	22.083355	-2232.38	379.93
5	GUIDE	260851360	9.74	2872	0.041	0.048	0.139	0.234	190.235632	22.625925	-1661.50	-1739.77
6	BAD	260863048	10.69	2728	-0.577	0.066	0.257	0.410	189.106386	22.633289	1140.75	756.44
7	GUIDE	260863544	6.24	2886	0.066	0.017	0.106	0.154	189.759086	22.659498	-406.29	-764.66

2.4 Star Slots

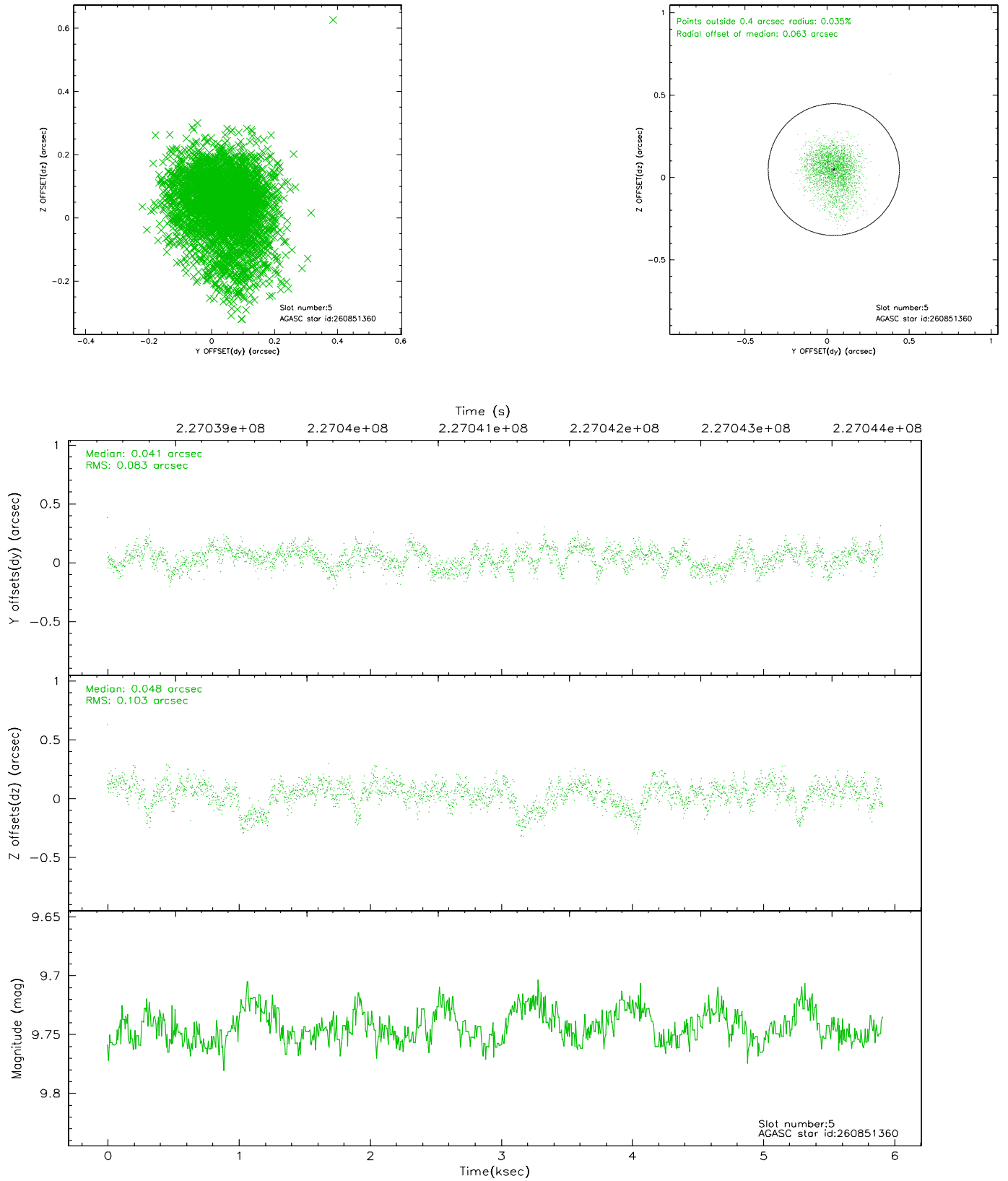
2.4.1 Slot 3



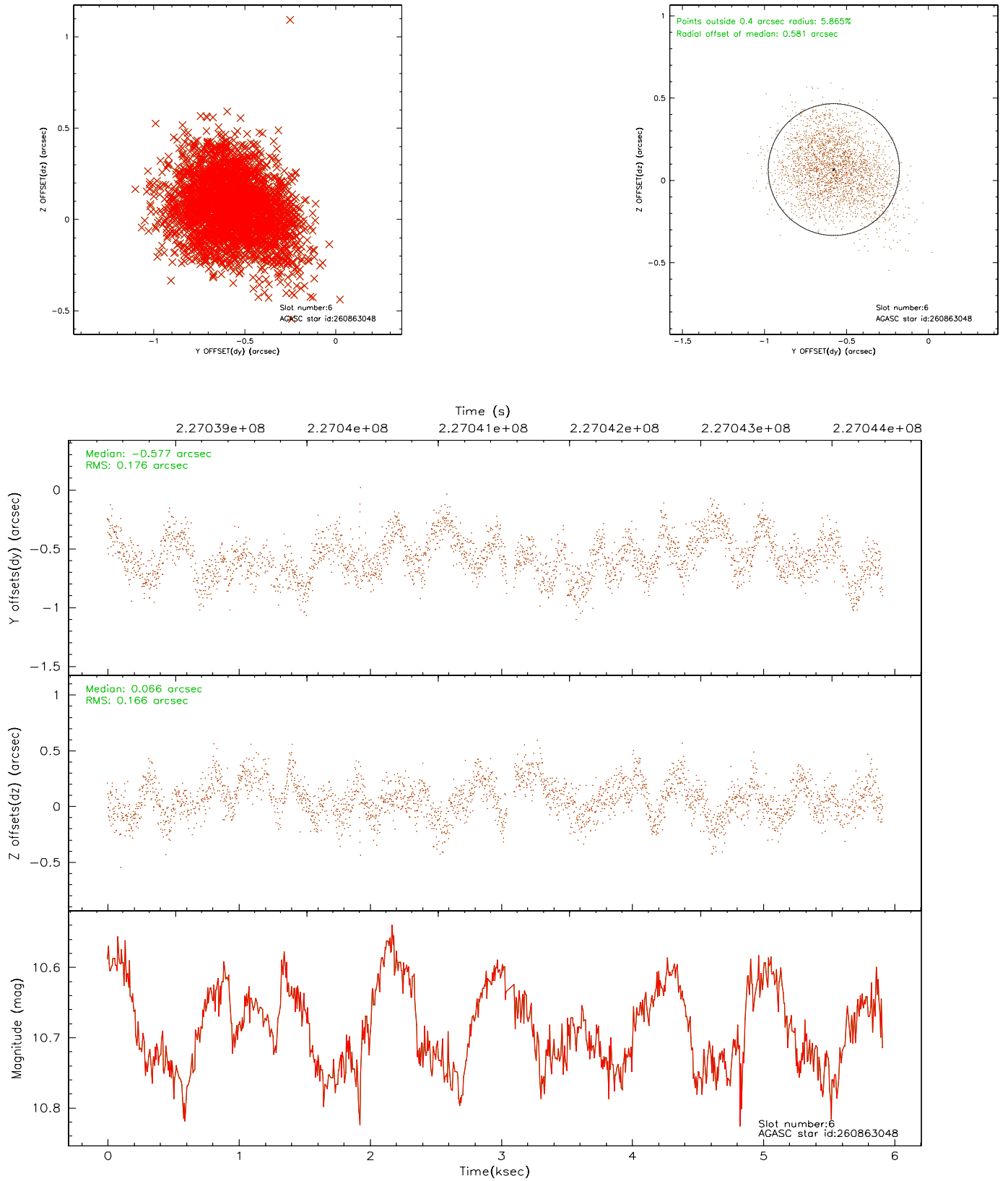
2.4.2 Slot 4



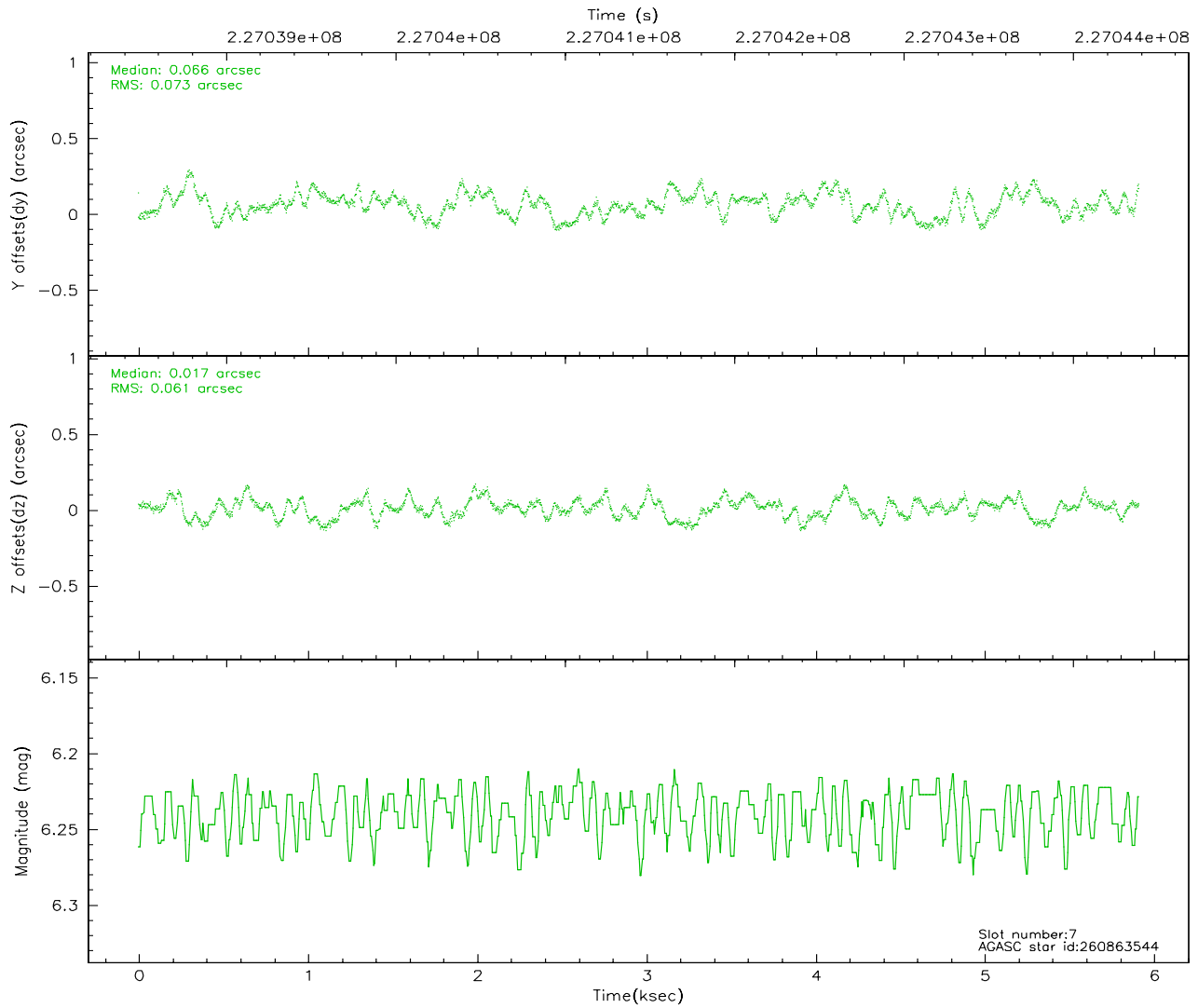
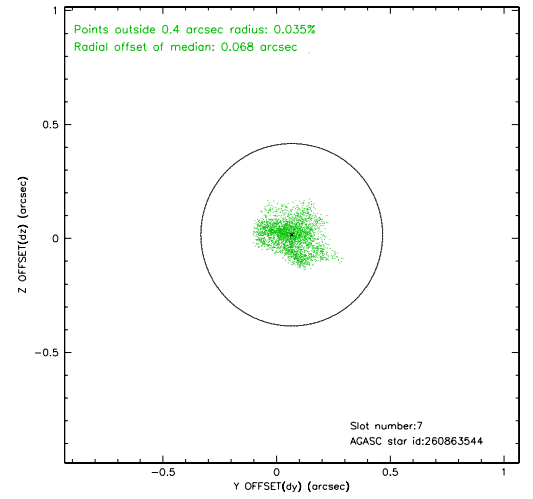
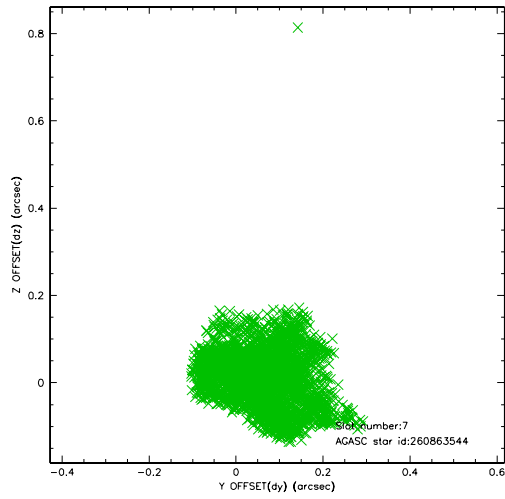
2.4.3 Slot 5



2.4.4 Slot 6

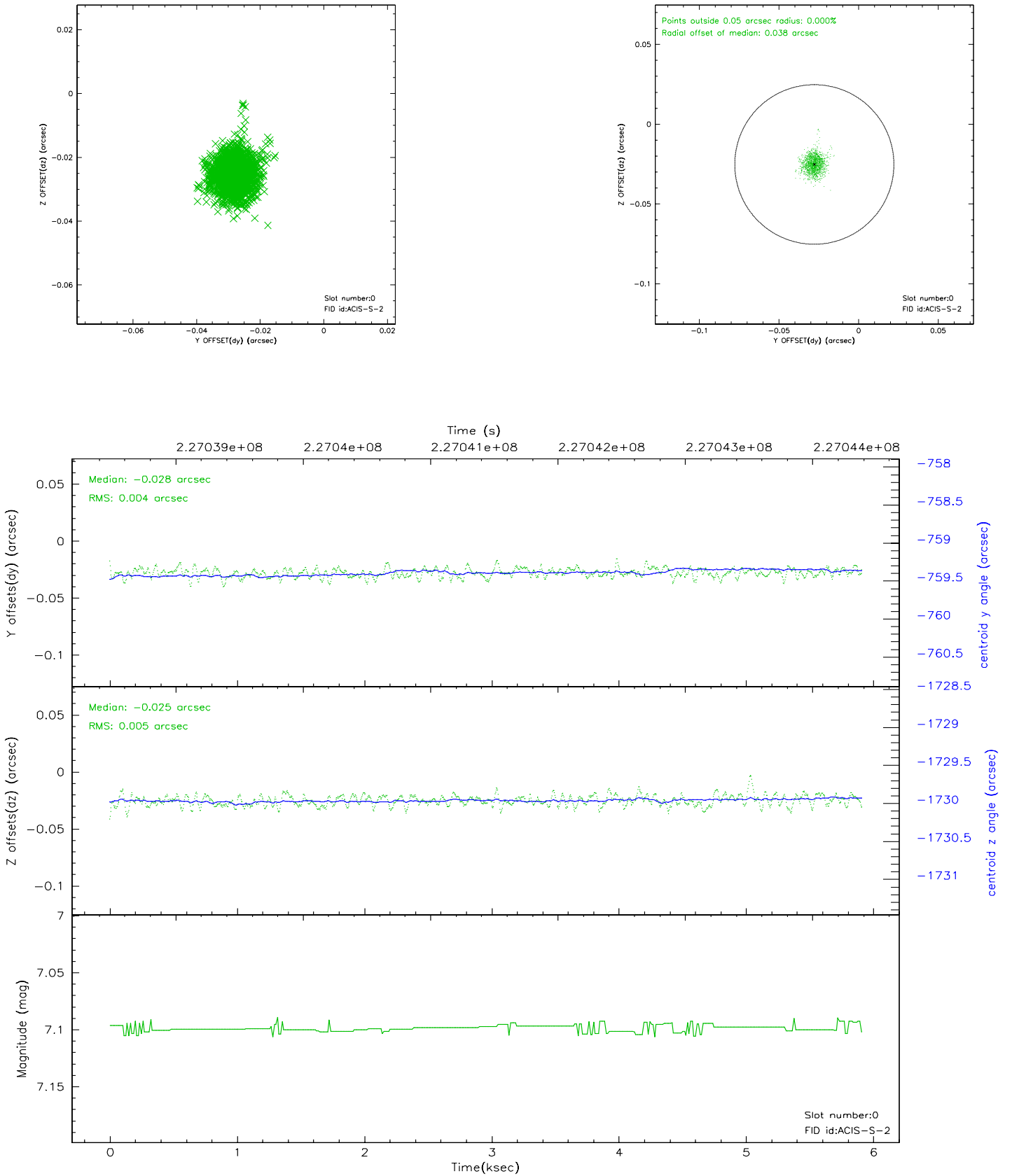


2.4.5 Slot 7

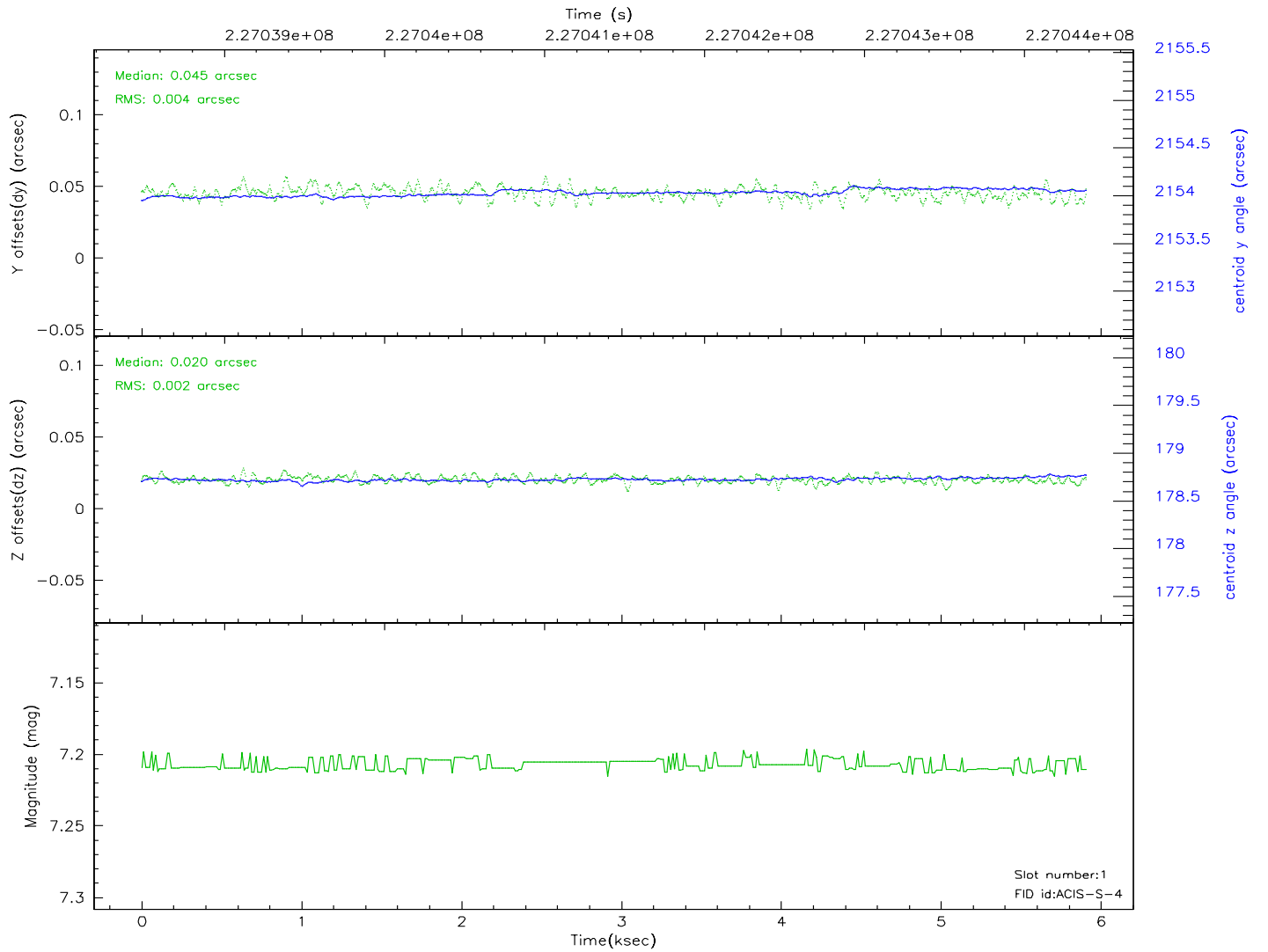
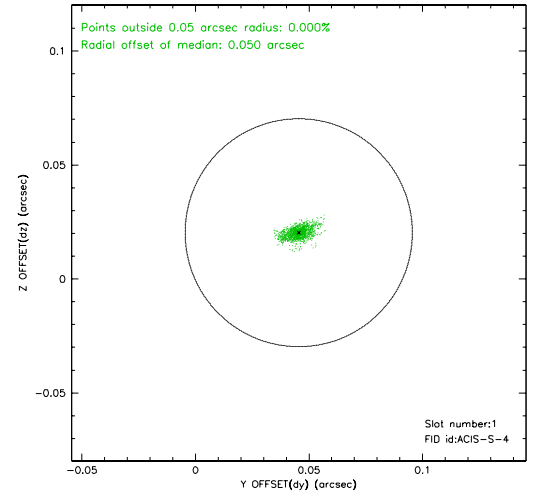
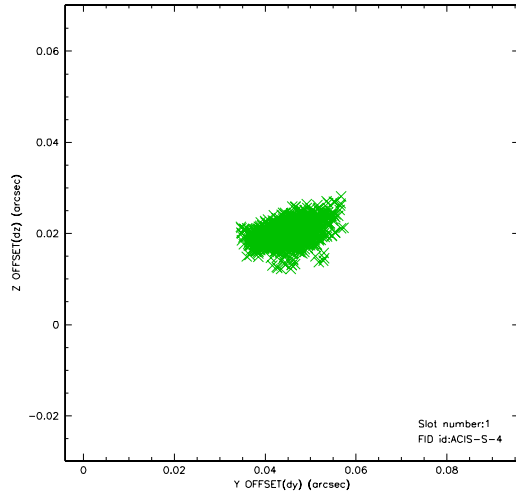


2.5 FID Slots

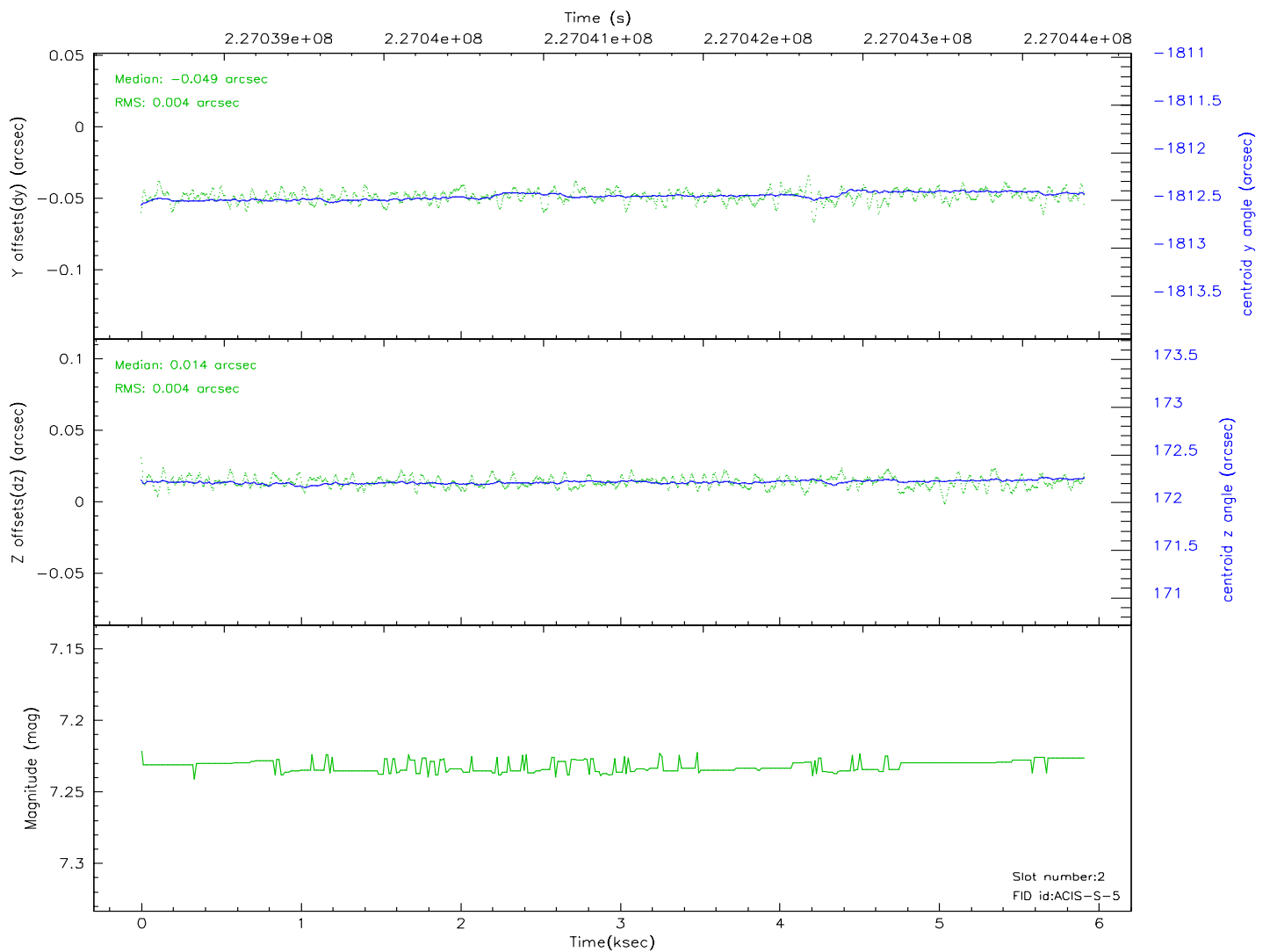
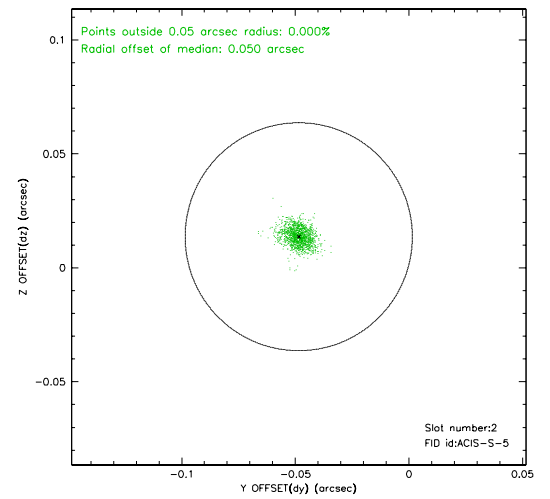
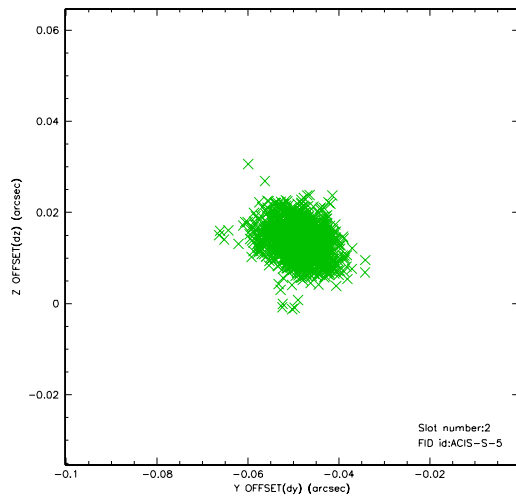
2.5.1 Slot 0



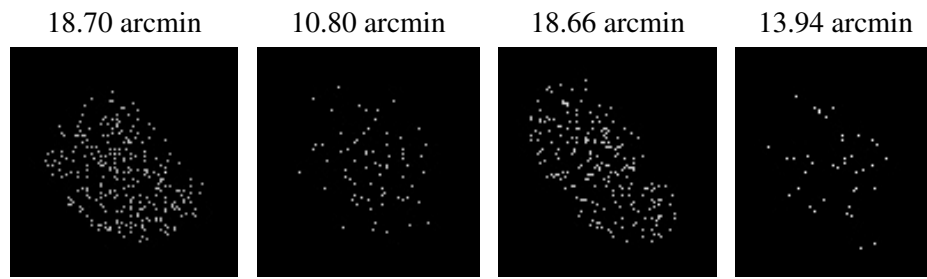
2.5.2 Slot 1



2.5.3 Slot 2



3 Point Sources



A Summary

A.1 Status

V&V Scientist	Beth Sundheim
V&V Date (YYYY-MM-DD)	2006.02.27
V&V Edition	1
V&V Disposition and Status	OK
V&V Charge Time	4.956799

A.2 Comments

Slot 6 was not included in aspect solution.