

V&V Reference Report

L2 ASCDS Version : 7.6.7.1

Observation 5716 - L2 Version 002
Chandra X-Ray Center

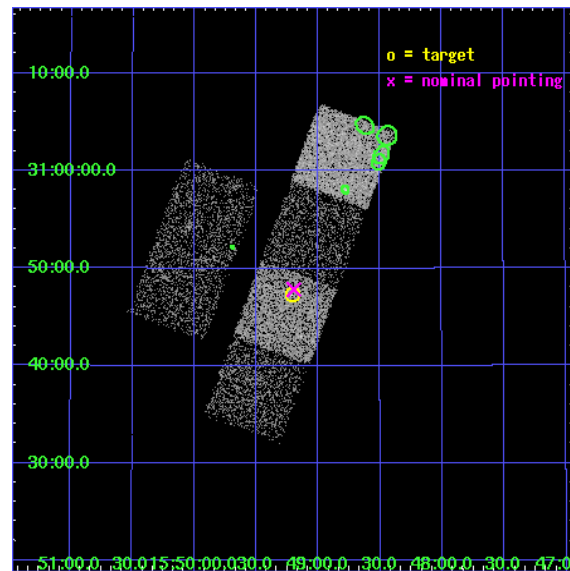
L2 Processing Date : Mar 17 2006

Contents

1	Front	2
2	OBI	3
2.1	OBI	3
2.1.1	Images	3
2.1.2	Bias	3
2.1.3	Parameters	4
2.1.4	Events	4
2.2	Compared Parameters	5
2.3	Aspect	6
2.4	Star Slots	9
2.4.1	Slot 3	9
2.4.2	Slot 4	10
2.4.3	Slot 5	11
2.4.4	Slot 6	12
2.4.5	Slot 7	13
2.5	FID Slots	14
2.5.1	Slot 0	14
2.5.2	Slot 1	15
2.5.3	Slot 2	16
3	Point Sources	17
A	Summary	18
A.1	Status	18
A.2	Comments	18

1 Front

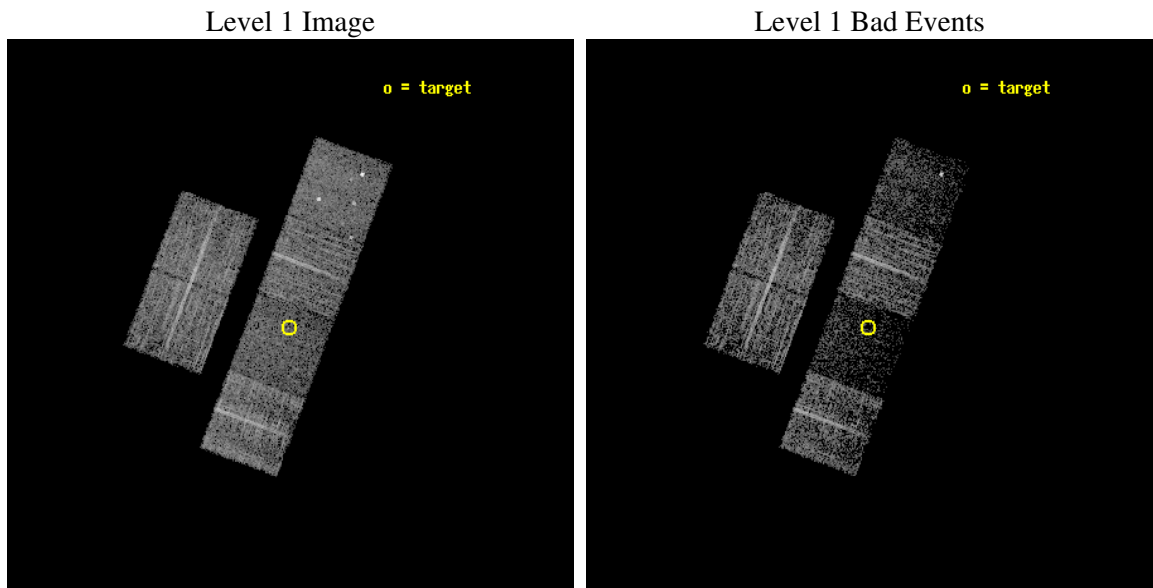
seq_num	701138
obs_id	5716
title	What kind of Jets does Nature make? X-ray characterization of the FIRST Flat Spectrum Sample
observer	Dr. Giovanni Fossati
object	FIRST J154912.3+304716
dtcycle	0
cycle	P
ra_targ	237.30125
dec_targ	30.787917
ra_nom	237.29909852735
dec_nom	30.797478156348
roll_nom	110.67428681187
revision	2
ontime	4067.1999848485
livetime	4015.6986496665
ontime2	4067.1999848485
ontime3	4067.1999848485
ontime5	4067.1999848485
ontime6	4067.1999848485
ontime7	4067.1999848485
ontime8	4067.1999848485
l2events	22903



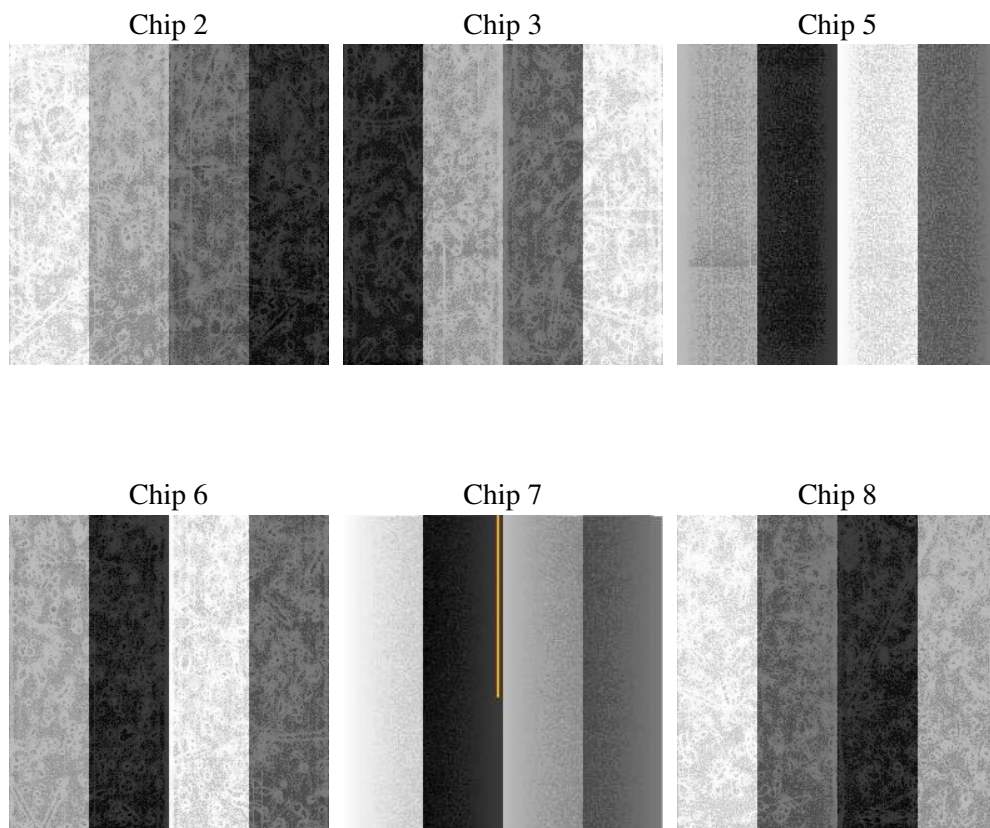
2 OBI

2.1 OBI

2.1.1 Images



2.1.2 Bias



2.1.3 Parameters

obi_num	0
ascdsver	7.6.7.1
caldsver	3.2.1
date	2006-03-17T12:28:28
revision	2

sched_exp_time	4000.000000
ontime	4073.948575139
ontime2	4073.948575139
ontime3	4073.948575139
ontime5	4073.948575139
ontime6	4073.948575139
ontime7	4073.948575139
ontime8	4073.948575139
l1events	120938

2.1.4 Events

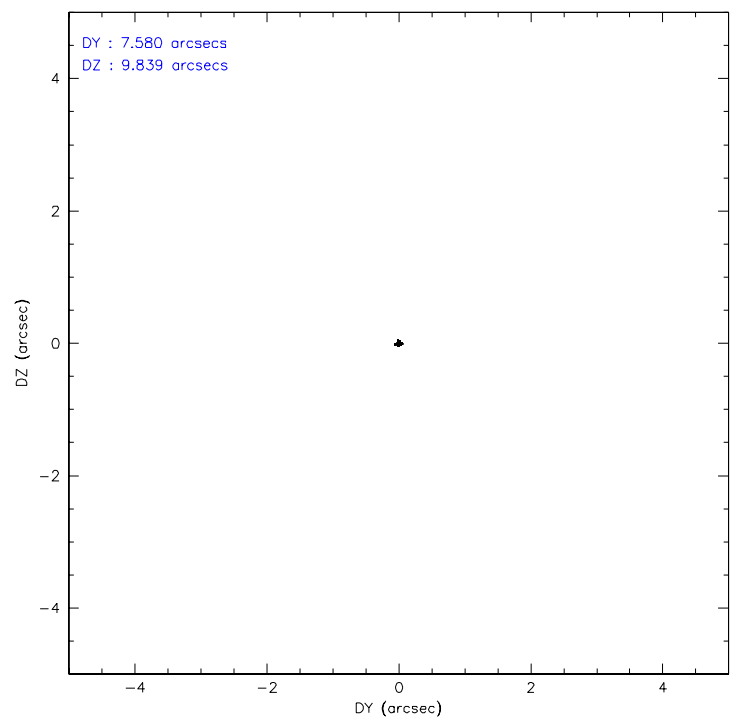
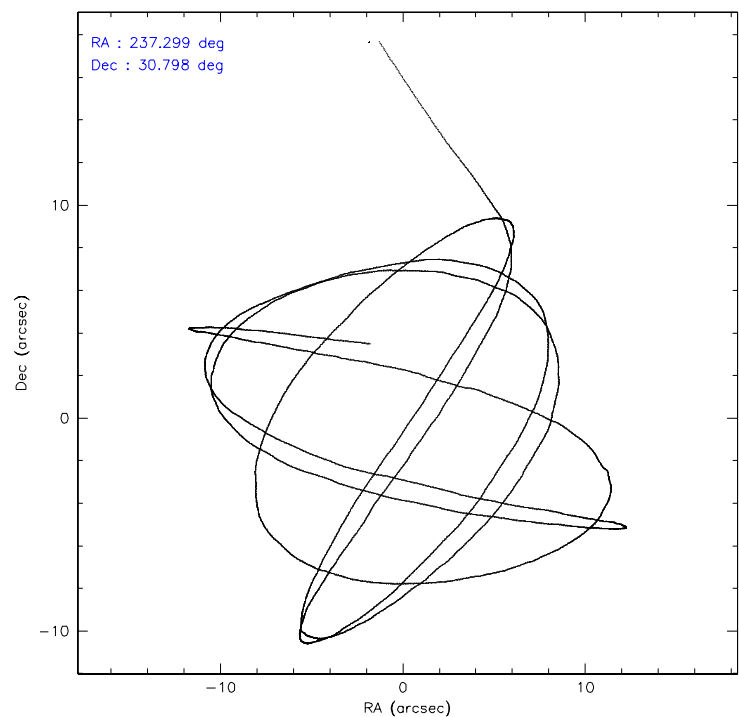
	ccd 2	ccd 3	ccd 5	ccd 6	ccd 7	ccd 8
level 1 events	22319	21397	20375	20667	12628	23552
rejected events	20409	19675	8291	18730	5761	17593
rejected %	91%	91%	40%	90%	45%	74%

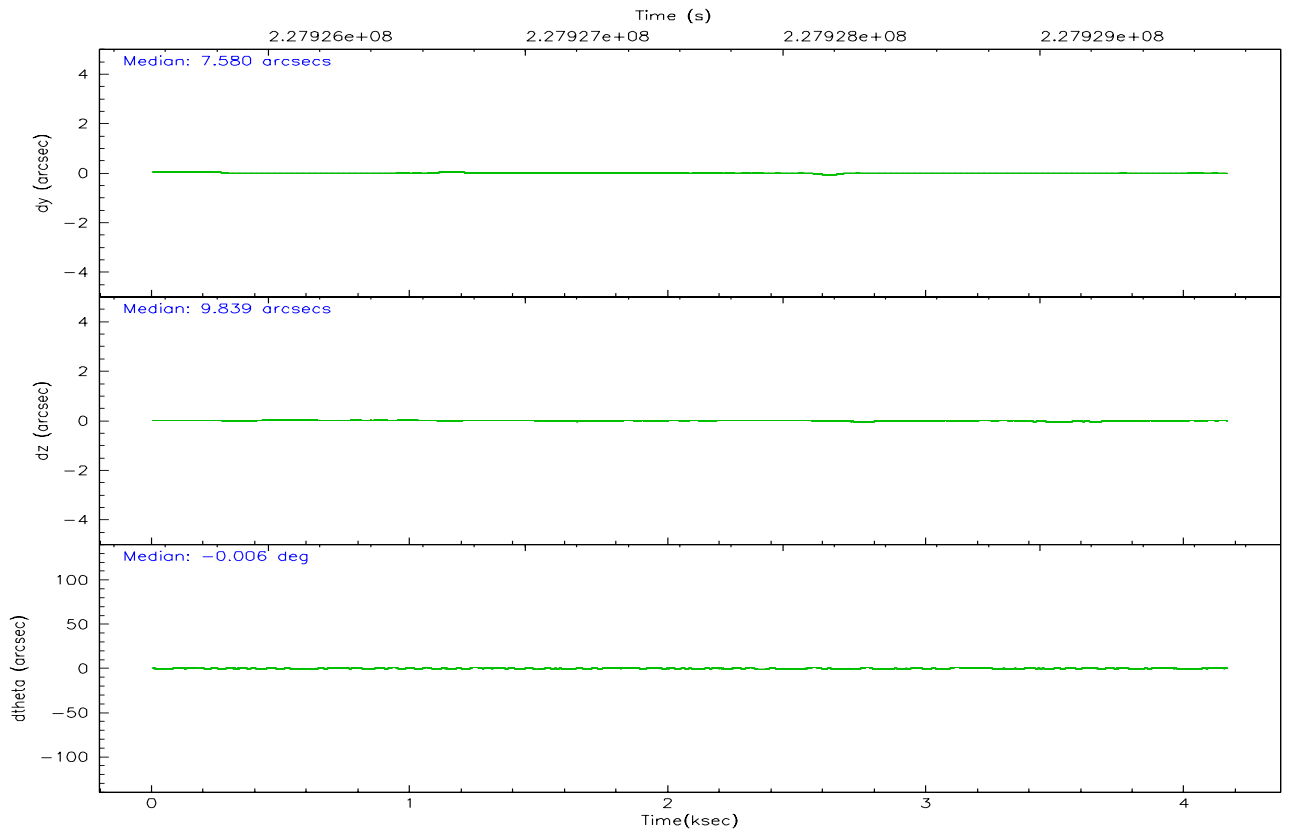
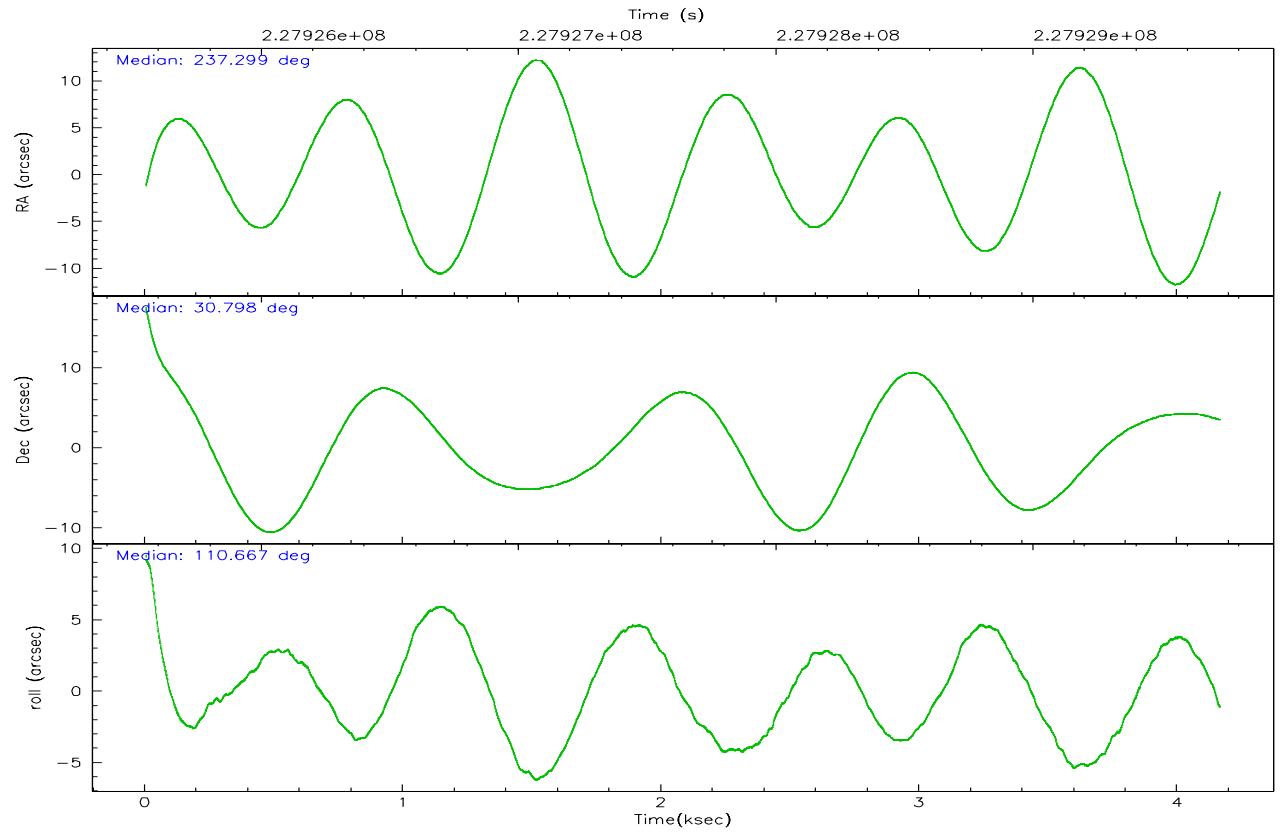
	ccd 2	ccd 3	ccd 5	ccd 6	ccd 7	ccd 8
grade 0 events	794	689	1893	773	641	1729
	3%	3%	9%	3%	5%	7%
grade 1 events	19	12	462	10	17	15
	0%	0%	2%	0%	0%	0%
grade 2 events	440	376	4103	409	1951	1350
	1%	1%	20%	1%	15%	5%
grade 3 events	201	208	383	232	481	689
	0%	0%	1%	1%	3%	2%
grade 4 events	185	192	369	219	499	683
	0%	0%	1%	1%	3%	2%
grade 5 events	383	417	1100	445	1054	743
	1%	1%	5%	2%	8%	3%
grade 6 events	291	261	5353	308	3303	1513
	1%	1%	26%	1%	26%	6%
grade 7 events	20006	19242	6712	18271	4682	16830
	89%	89%	32%	88%	37%	71%

2.2 Compared Parameters

Parameter	Planned	Actual	Parameter	Planned	Actual
Instrument	ACIS	ACIS	Obspar format version number	6	6
Detector	ACIS-235678	ACIS-235678	Obspar file type	PREDICTED	ACTUAL
Grating	NONE	NONE	Obspar update status	NONE	UPDATED
Data mode	VFAINT	VFAINT	On-chip summing requested	N	N
Observation mode	POINTING	POINTING	Subarray requested	NONE	NONE
Pointing RA	237.323967	237.2990985273452	Alternating exposures requested	N	N
Pointing Dec	30.780447	30.79747815634846	Primary exposure time	0.000000	3.2
Pointing Roll	110.504902	110.674286811865			
SIM focus pos (mm)	-0.684267	-0.6828225247311905			
SIM defocus (mm)	0	0.001444936568705701			
SIM translation stage pos (mm)	-190.132523	-190.145094680475			
SIM translation stage offset (mm)	0	0.01257209746719923			
Observation start time	227925720.184000	227924703.76605			
Observation start date	2005-03-23T00:40:56	2005-03-23T00:25:03			
Observation end time	227929720.184000	227930147.0288			
Observation end date	2005-03-23T01:47:36	2005-03-23T01:55:47			
Read mode	TIMED	TIMED			

2.3 Aspect



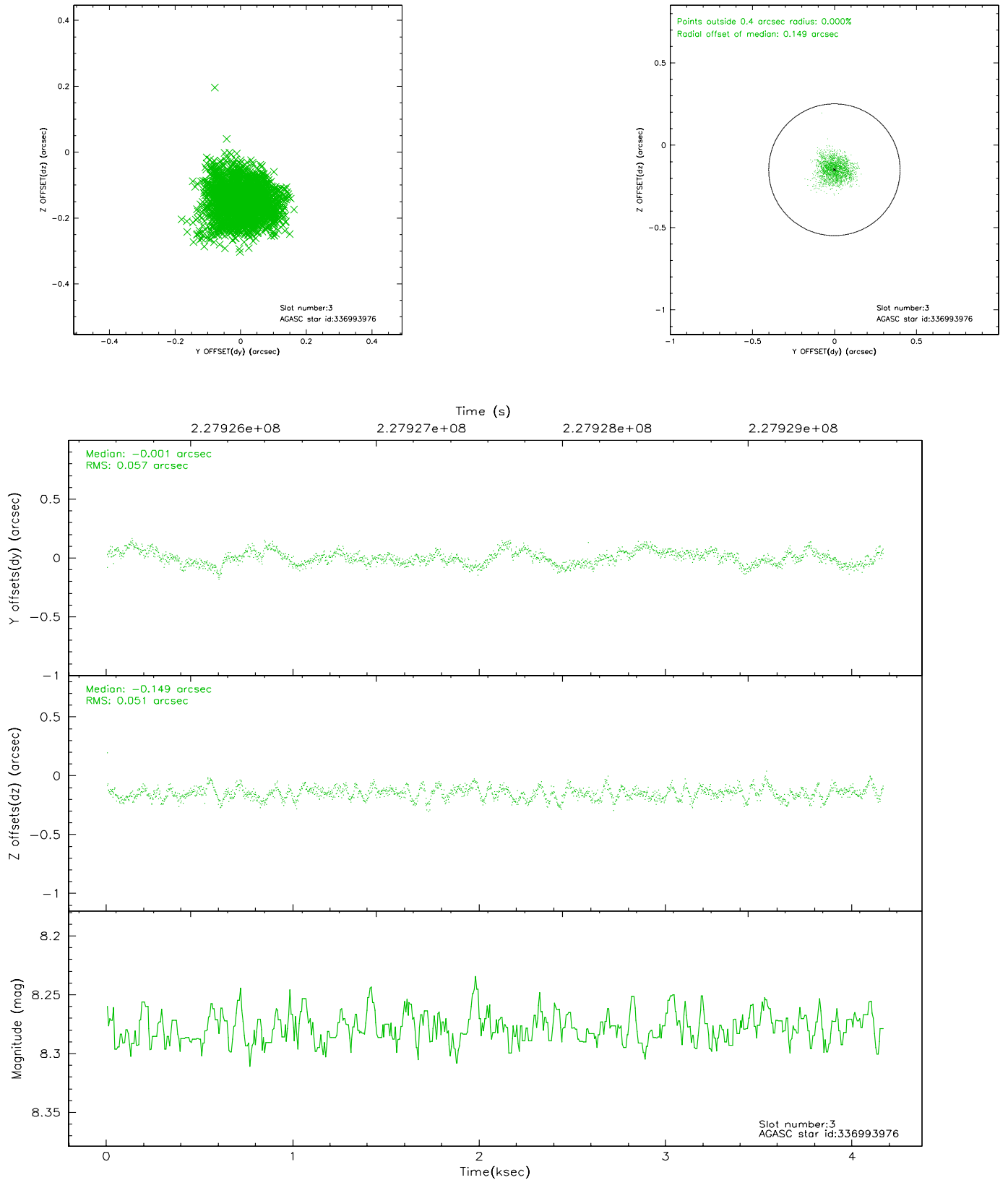


Slot Statistics

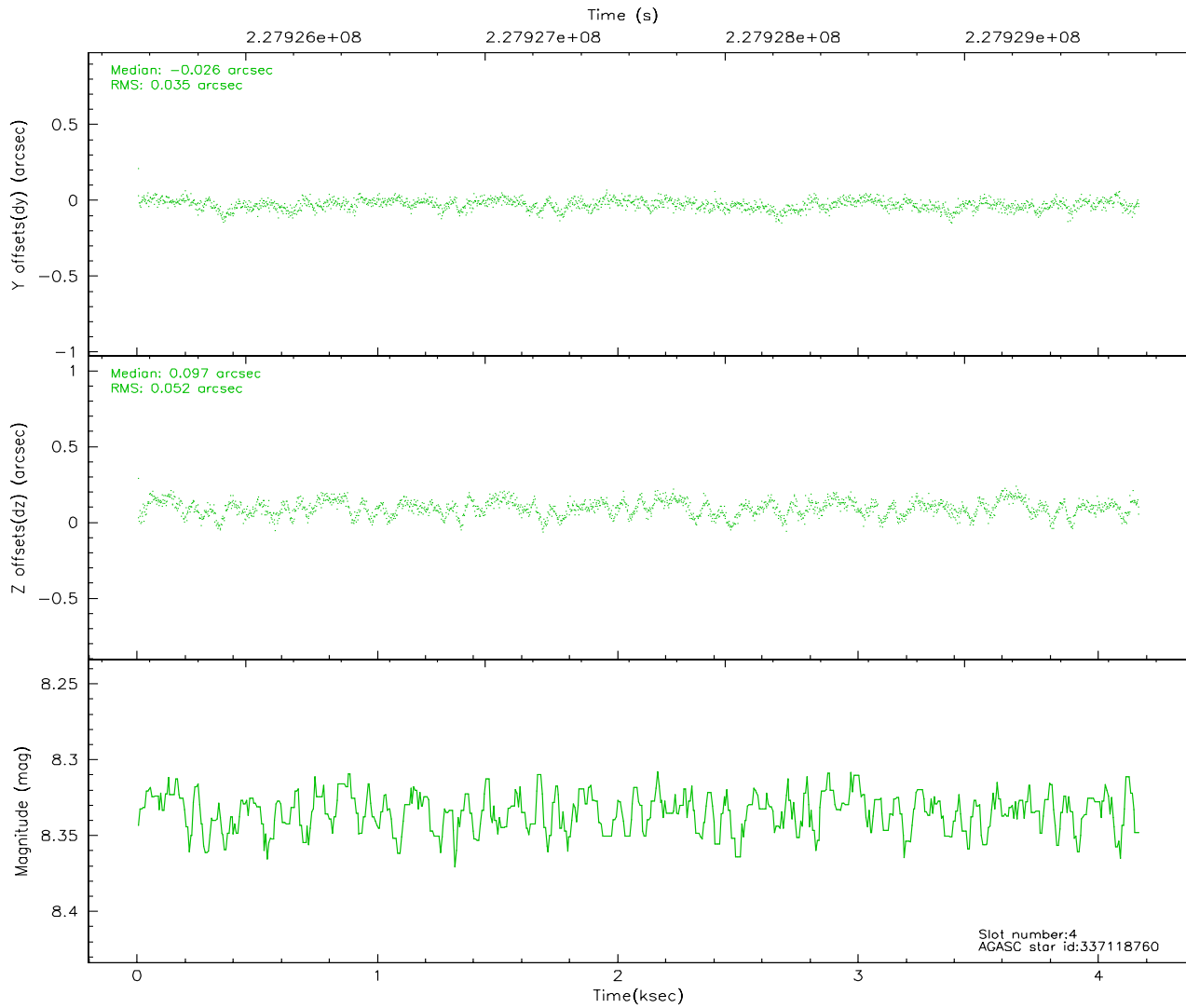
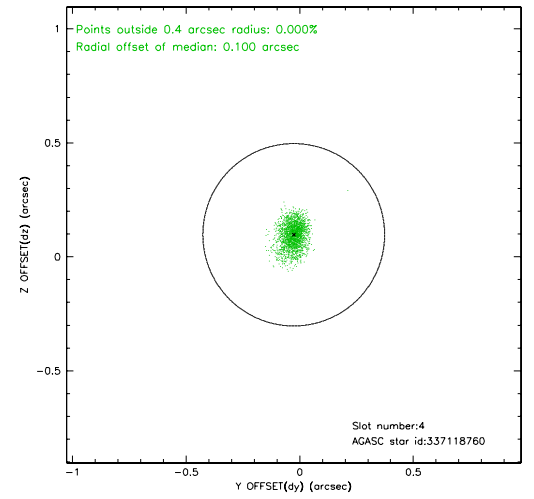
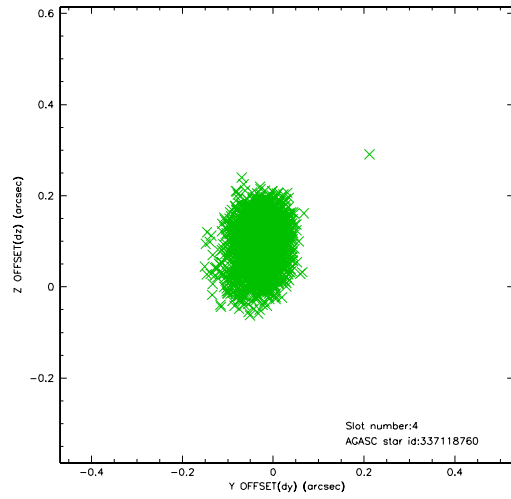
slot	status	id	mag	n_pts	med_dy	med_dz	dr1	dr2	ra	dec	mean_y	mean_z
0	FID	ACIS-S-1	7.19	1016	0.004	0.005	0.007	0.011	0.000000	0.000000	935.70	-1726.60
1	FID	ACIS-S-4	7.21	1016	0.040	-0.001	0.006	0.010	0.000000	0.000000	2153.95	176.03
2	FID	ACIS-S-5	7.24	1016	-0.071	0.009	0.005	0.009	0.000000	0.000000	-1811.35	171.29
3	GUIDE	336993976	8.28	2032	-0.001	-0.149	0.082	0.129	236.790625	30.565640	-142.05	1818.03
4	GUIDE	337118760	8.33	2032	-0.026	0.097	0.066	0.110	237.951385	30.817716	-548.79	-1864.75
5	GUIDE	337124720	9.09	2031	-0.109	0.014	0.077	0.125	237.274125	31.221858	1541.59	-413.40
6	GUIDE	337125592	8.96	2031	0.063	0.184	0.135	0.187	237.999104	30.736400	-873.45	-1903.39
7	GUIDE	337122208	9.74	2030	0.084	-0.150	0.120	0.200	237.026066	30.014258	-2257.47	1834.92

2.4 Star Slots

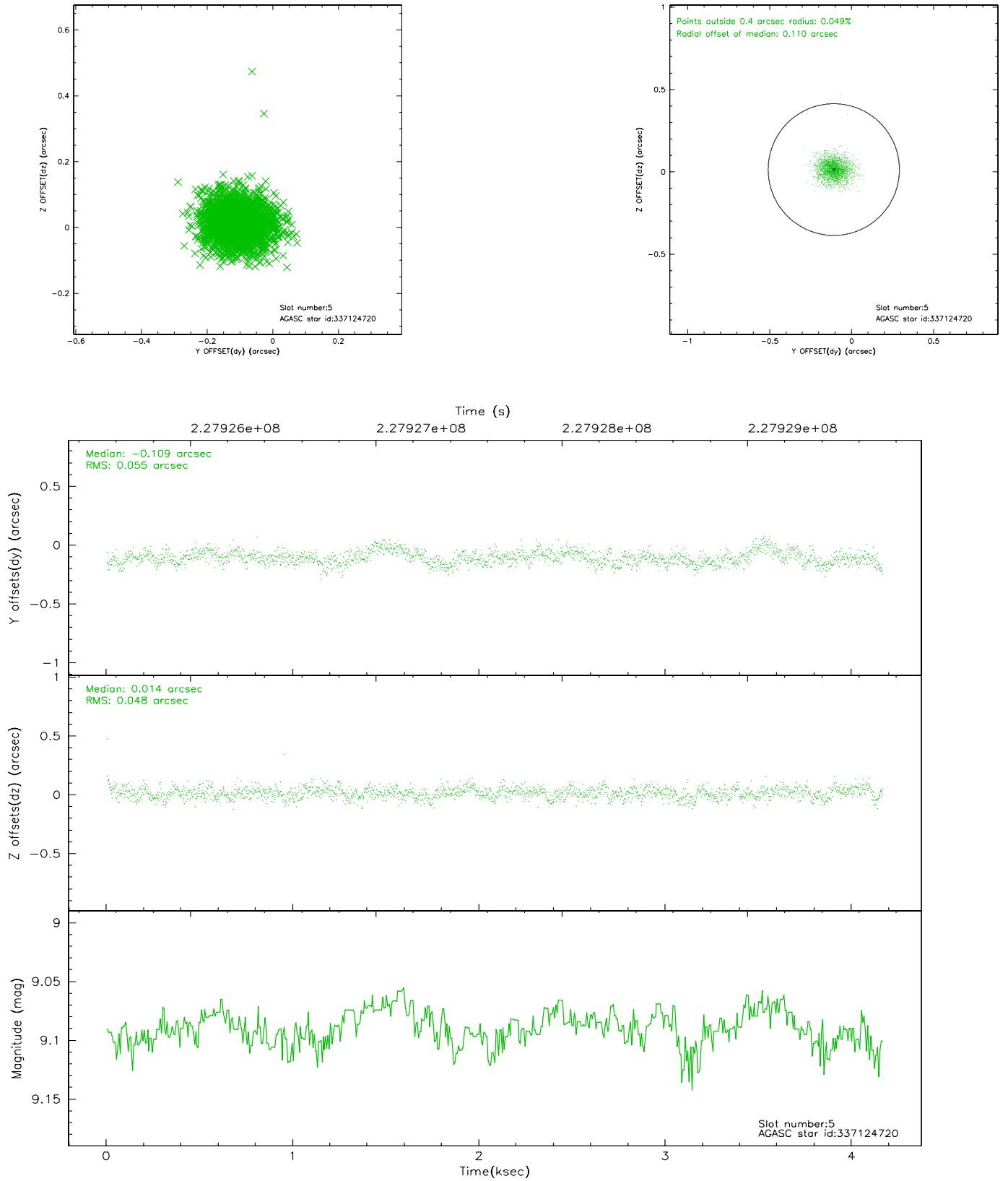
2.4.1 Slot 3



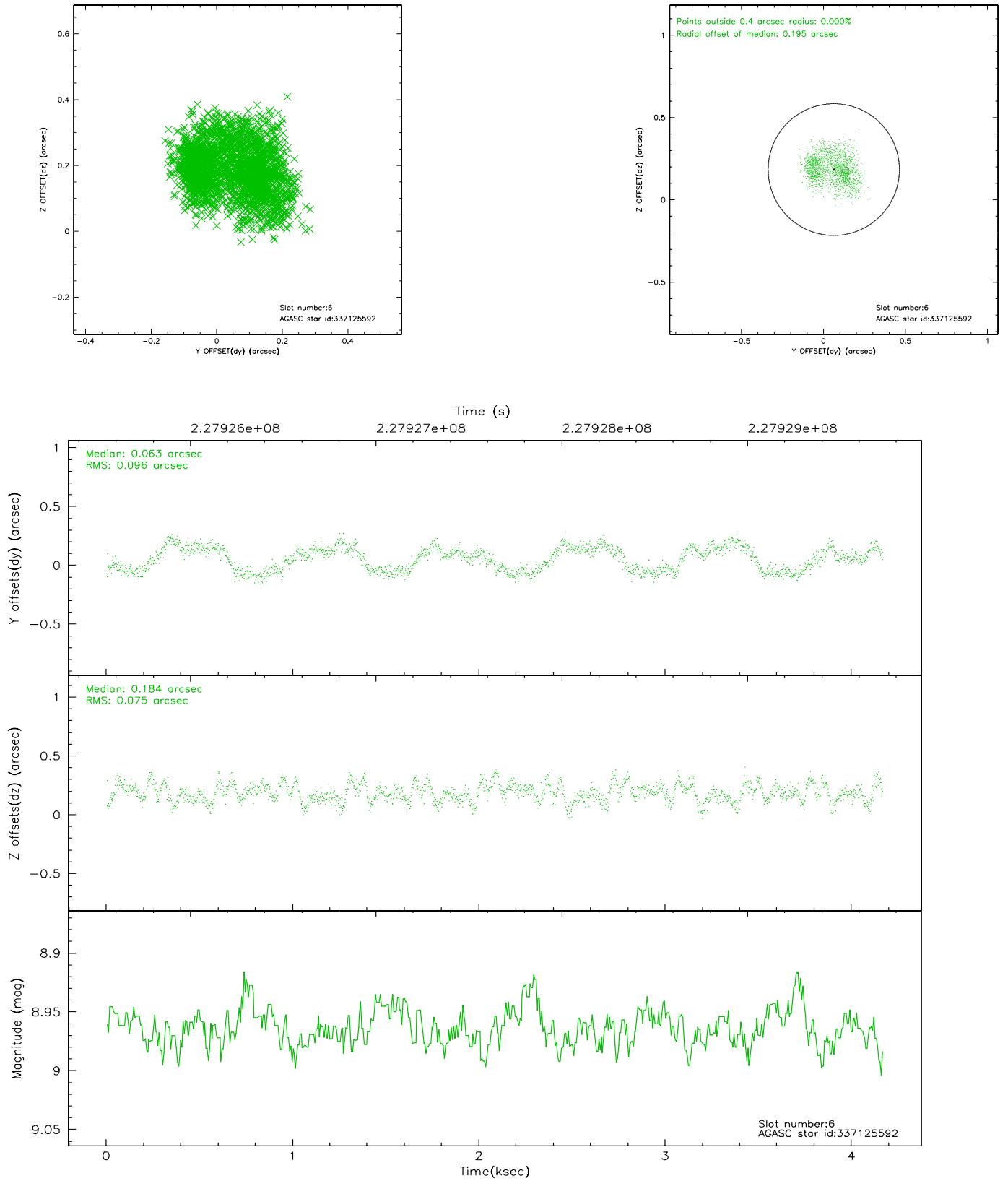
2.4.2 Slot 4



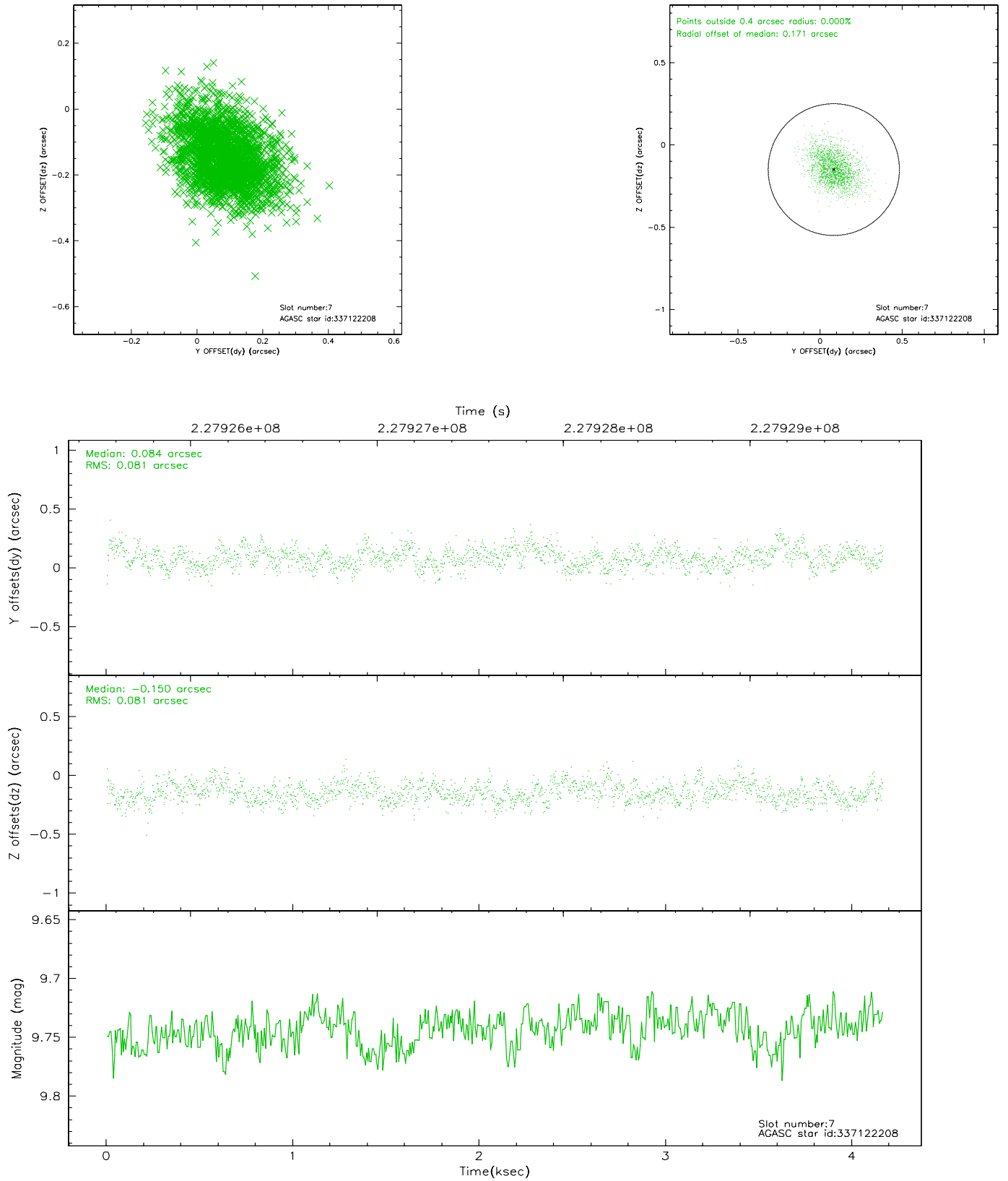
2.4.3 Slot 5



2.4.4 Slot 6

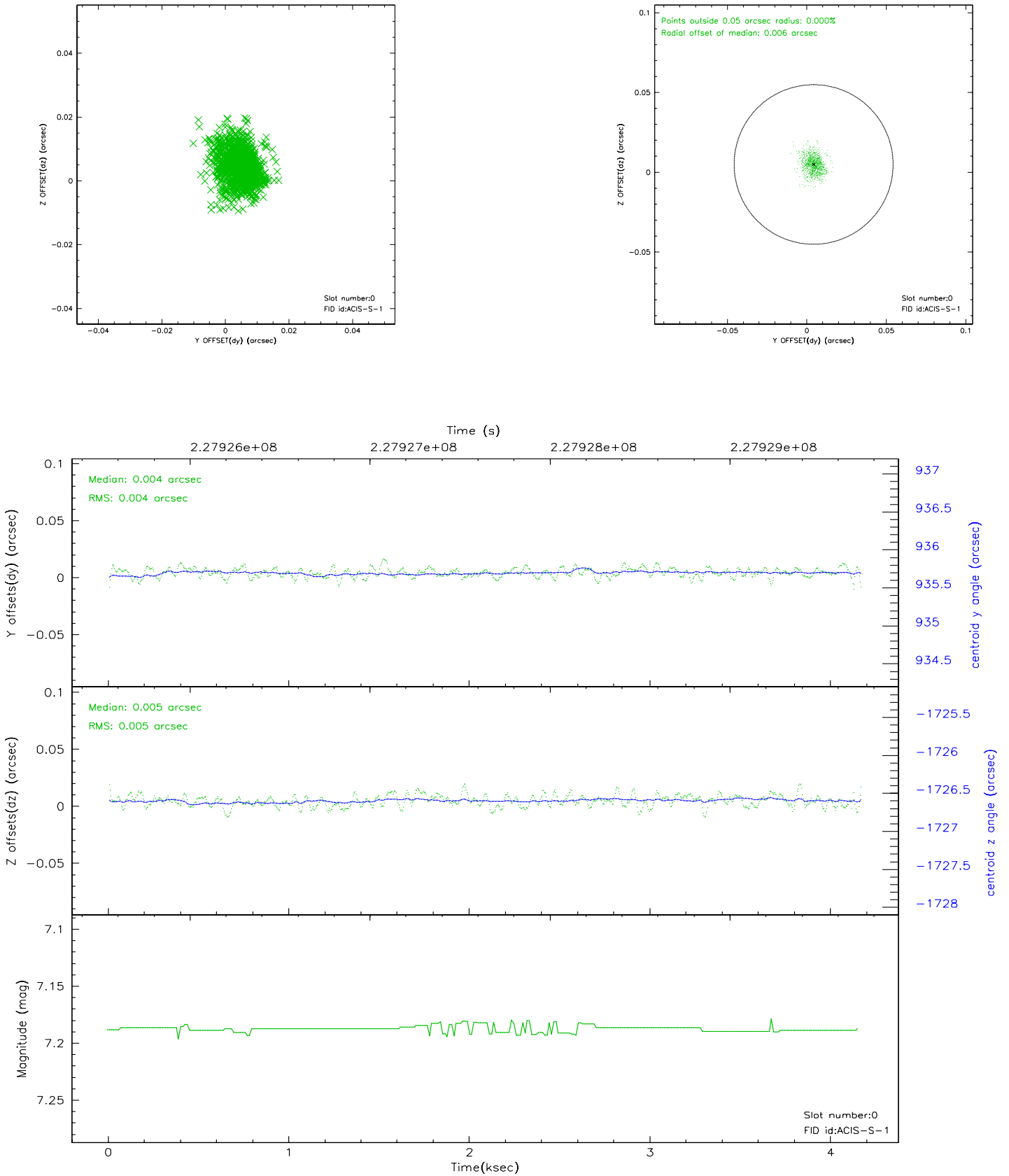


2.4.5 Slot 7

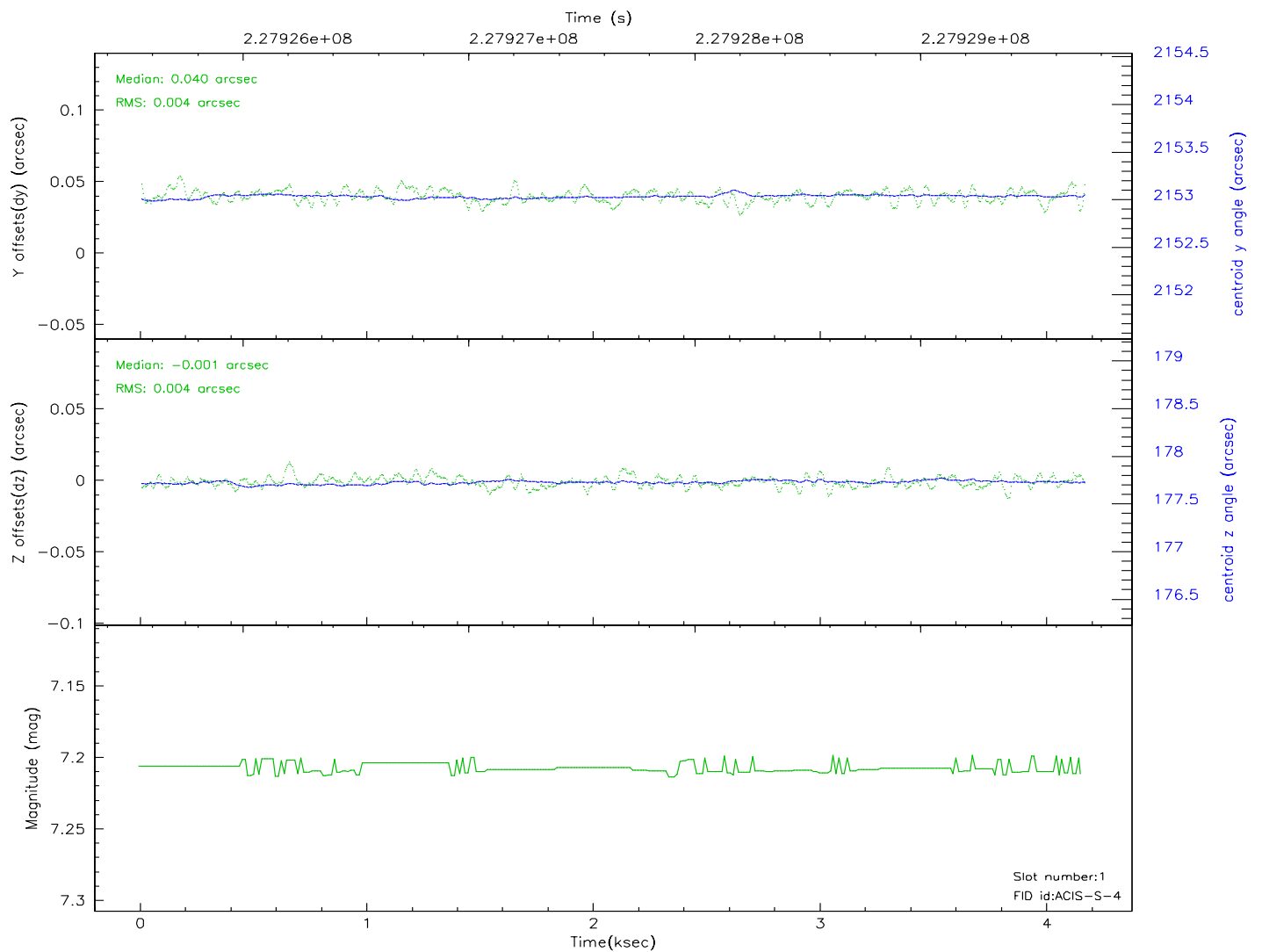
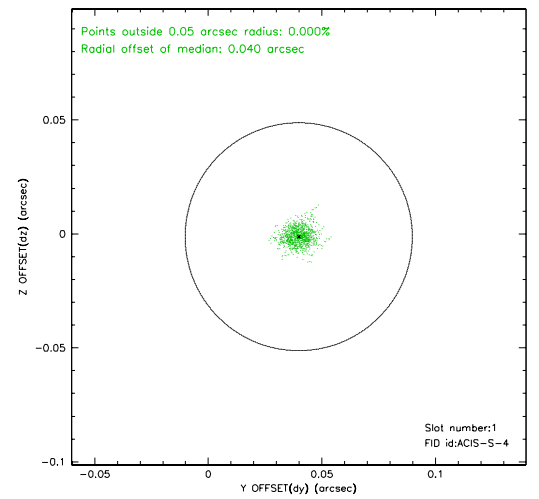
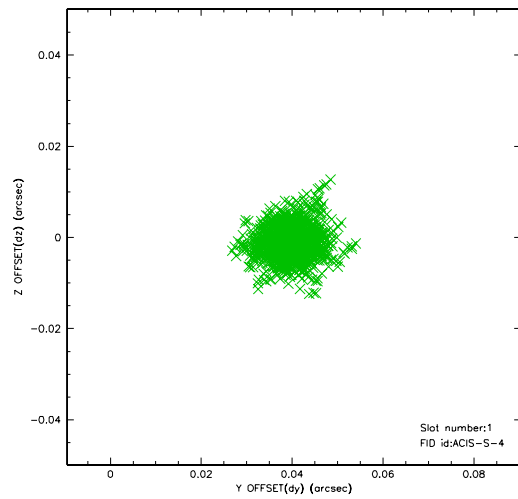


2.5 FID Slots

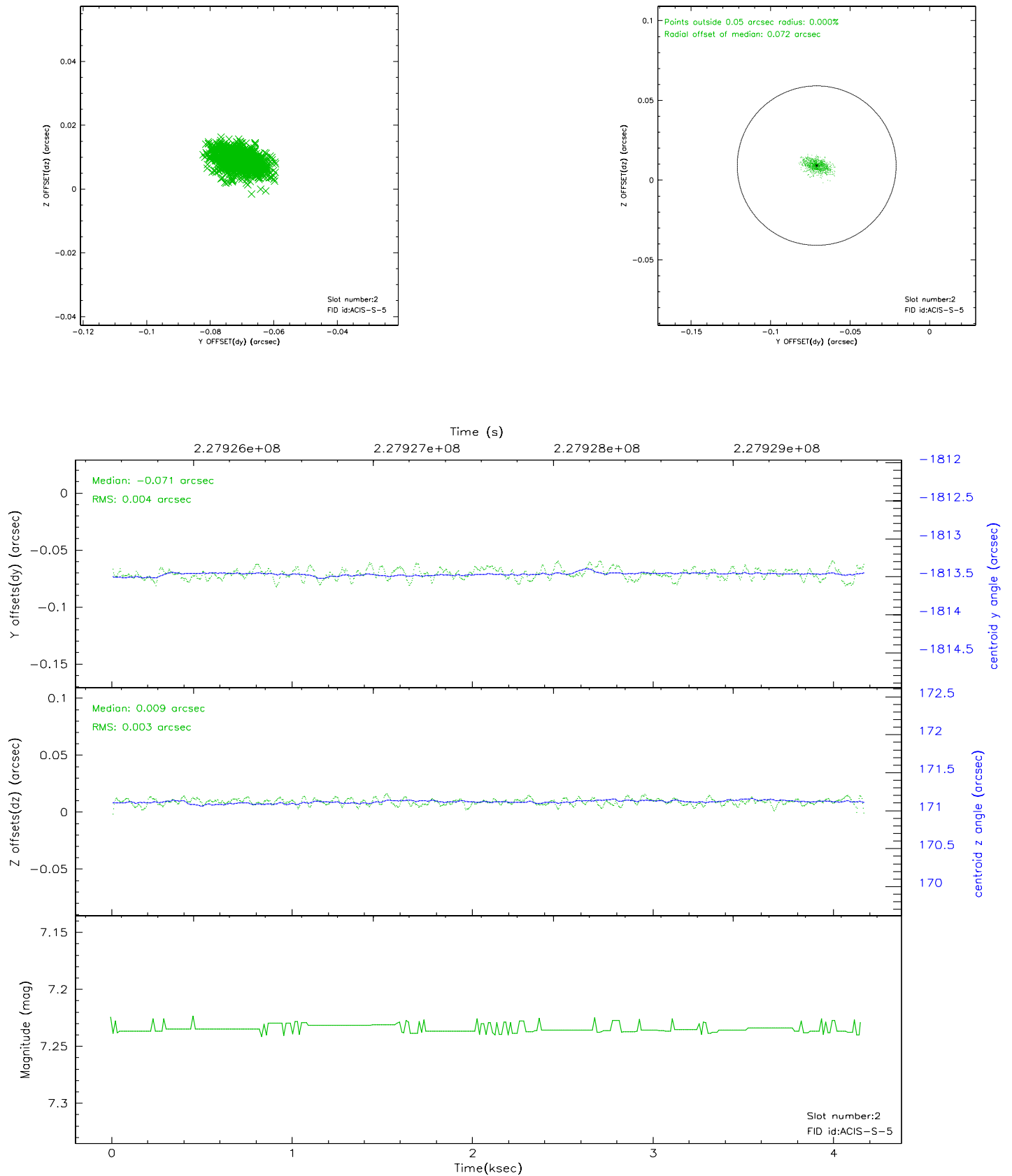
2.5.1 Slot 0



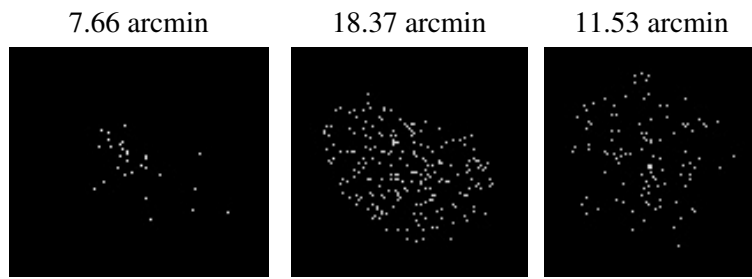
2.5.2 Slot 1



2.5.3 Slot 2



3 Point Sources



A Summary

A.1 Status

V&V Scientist	Jen Lauer
V&V Date (YYYY-MM-DD)	2006.03.17
V&V Edition	1
V&V Disposition and Status	OK
V&V Charge Time	4.067199

A.2 Comments